

V&V Reference Report

L2 ASCDS Version : 7.6.10

Observation 62010 - L2 Version 001
Chandra X-Ray Center

L2 Processing Date : May 27 2007

Contents

1	Front	2
2	OBI	3
2.1	OBI	3
2.1.1	Images	3
2.1.2	Bias	3
2.1.3	Parameters	4
2.1.4	Events	4
2.2	Compared Parameters	5
2.3	Star Slots	6
2.4	FID Slots	6
A	Summary	7
A.1	Status	7
A.2	Comments	7

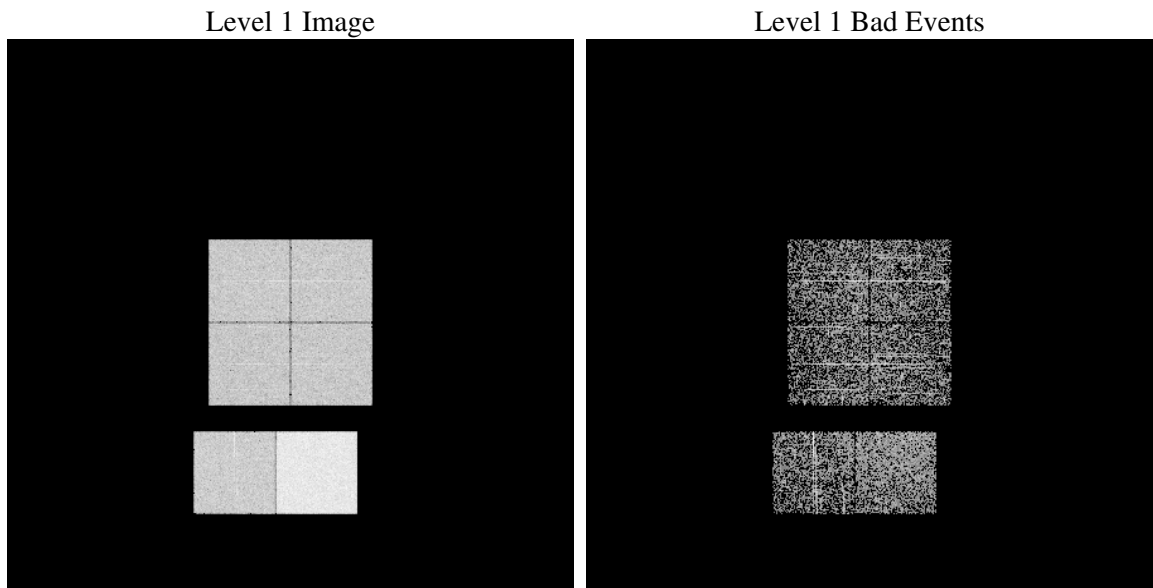
1 Front

seq_num	
obs_id	62010
title	ACIS-012367 diagnostics
observer	CHANDRA engineering request/realtime commanding
object	
dtcycle	0
cycle	P
ra_targ	0.0
dec_targ	0.0
ra_nom	142.37117835585
dec_nom	-62.28743453593
roll_nom	219.93783861053
revision	4
ontime	1400.9970297962
livetime	1383.2567618258
ontime0	629.63946314156
ontime1	631.06846413016
ontime2	584.26504285634
ontime3	601.77613379061
ontime6	668.53200288117
ontime7	1400.9970297962
l2events	355841

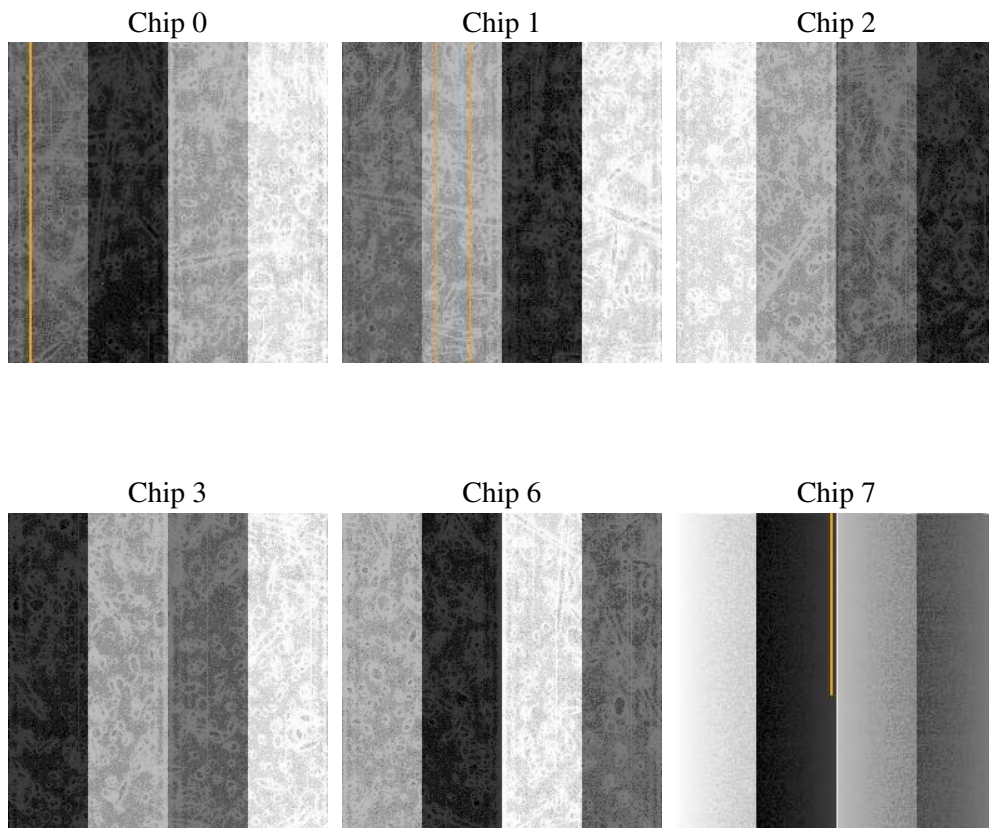
2 OBI

2.1 OBI

2.1.1 Images



2.1.2 Bias



2.1.3 Parameters

obi_num	0
ascdsver	7.6.10
caldbver	3.4.0
date	2007-05-27T23:10:24
revision	4

sched_exp_time	0.0
ontime	1400.9970297962
ontime0	629.63946314156
ontime1	631.06846413016
ontime2	584.26504285634
ontime3	601.77613379061
ontime6	668.53200288117
ontime7	1400.9970297962
llevents	405000

2.1.4 Events

	ccd 0	ccd 1	ccd 2	ccd 3	ccd 6	ccd 7
level 1 events	56202	56175	53229	54432	61775	123187
rejected events	5236	5368	5260	5391	5618	7081
rejected %	9%	9%	9%	9%	9%	5%

	ccd 0	ccd 1	ccd 2	ccd 3	ccd 6	ccd 7
grade 0 events	28039	28068	26404	27534	30692	29649
	49%	49%	49%	50%	49%	24%
grade 1 events	152	161	132	154	179	66
	0%	0%	0%	0%	0%	0%
grade 2 events	9026	8816	8470	8473	9559	25609
	16%	15%	15%	15%	15%	20%
grade 3 events	3203	3260	3048	3119	3378	11833
	5%	5%	5%	5%	5%	9%
grade 4 events	3305	3261	3051	3116	3471	11773
	5%	5%	5%	5%	5%	9%
grade 5 events	389	405	352	379	469	1631
	0%	0%	0%	0%	0%	1%
grade 6 events	7393	7402	6996	6799	9057	37242
	13%	13%	13%	12%	14%	30%
grade 7 events	4695	4802	4776	4858	4970	5384
	8%	8%	8%	8%	8%	4%

2.2 Compared Parameters

Parameter	Planned	Actual	Parameter	Planned	Actual
Instrument	ACIS	ACIS	Obspar format version number	6	6
Detector	ACIS-012367	ACIS-012367	Obspar file type	PREDICTED	ACTUAL
Grating	NONE	NONE	Obspar update status	NONE	UPDATED
Data mode	FAINT	FAINT	On-chip summing requested	N	N
Observation mode	SECONDARY	SECONDARY	Subarray requested	NONE	NONE
Pointing RA	0	142.3711783558464	Alternating exposures requested	N	N
Pointing Dec	0	-62.28743453592958	Primary exposure time	0.000000	3.2
Pointing Roll	0.0	219.9378386105294			
SIM focus pos (mm)	-0.782348	-0.6828225247311905			
SIM defocus (mm)	0	0.8505141146731063			
SIM translation stage pos (mm)	-233.592463	250.466033080201			
SIM translation stage offset (mm)	0	-0.01005468664627074			
Observation start time	78621595.752	78621594.98329			
Observation start date	2000-06-28T23:19:56	2000-06-28T23:19:54			
Observation end time	78632104.052	78632103.283678			
Observation end date	2000-06-29T02:15:04	2000-06-29T02:15:03			
Read mode	TIMED	TIMED			

2.3 Star Slots

2.4 FID Slots

A Summary

A.1 Status

V&V Scientist	Jen Lauer
V&V Date (YYYY-MM-DD)	2007.05.29
V&V Edition	1
V&V Disposition and Status	OK
V&V Charge Time	1.40099702

A.2 Comments