

V&V Reference Report

L2 ASCDS Version : 8.4.5

Observation 61990 - L2 Version 5
Chandra X-Ray Center

L2 Processing Date : Aug 30 2012

Contents

1	Front	2
2	OBI	3
2.1	OBI	3
2.1.1	Images	3
2.1.2	Bias	3
2.1.3	Parameters	4
2.1.4	Events	4
2.2	Compared Parameters	5
2.3	Star Slots	6
2.4	FID Slots	6
A	Summary	7
A.1	Status	7
A.2	Comments	7

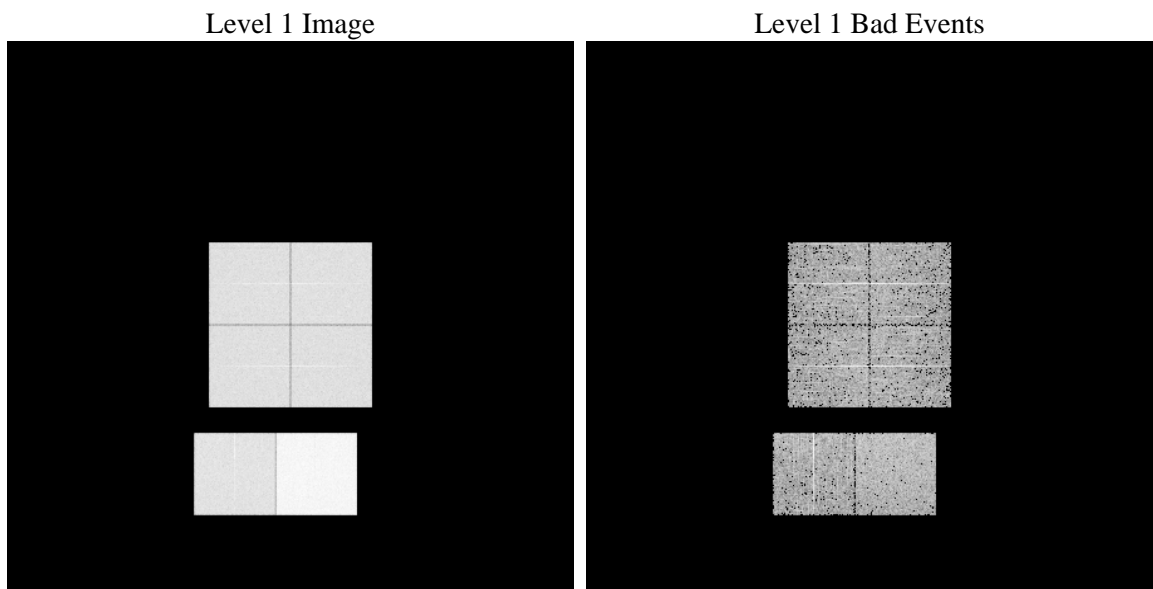
1 Front

seq_num	 	Sequence number
obs_id	61990	Observation id
title	ACIS-012367 diagnostics	Proposal title
observer	CHANDRA engineering request/realtime commanding	Principal investig
object	 	Source name
dtcycle	0	
cycle	P	events from which exps? Prim/Second/Both
ra_targ	0.0	Observer's specified target RA [deg]
dec_targ	0.0	Observer's specified target Dec [deg]
ra_nom	158.9924131355	Nominal RA [deg]
dec_nom	-54.37690641723	Nominal Dec [deg]
roll_nom	216.74017069982	Nominal Roll [deg]
revision	5	Processing version of data
ontime	5432.8017505854	Sum of GTIs [s]
livetime	5364.008343579	Livetime [s]
ontime0	2448.8025022298	Sum of GTIs [s]
ontime1	2502.9350294471	Sum of GTIs [s]
ontime2	2390.5459122062	Sum of GTIs [s]
ontime3	2361.212123096	Sum of GTIs [s]
ontime6	2610.9773824215	Sum of GTIs [s]
ontime7	5432.8017505854	Sum of GTIs [s]
l2events	1379413	Number of level 2 events

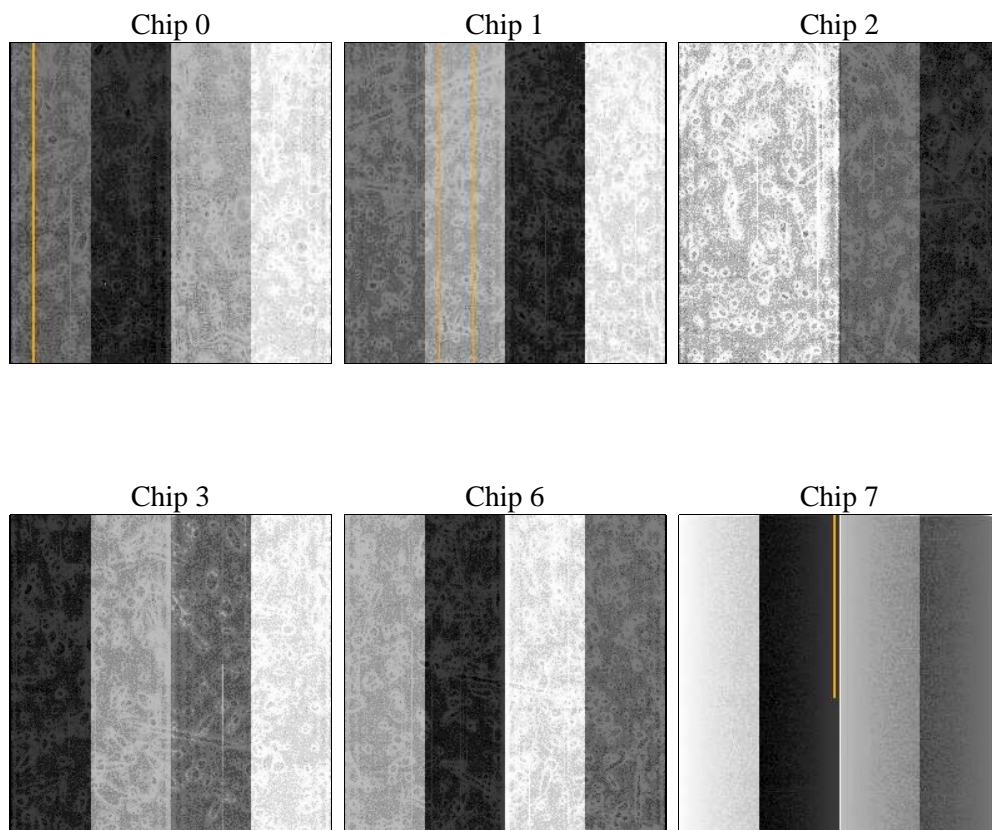
2 OBI

2.1 OBI

2.1.1 Images



2.1.2 Bias



2.1.3 Parameters

obi_num	1	Obi number	sched_exp_time	0.0	[s] Scheduled observation exposure time
ascdsver	8.4.5	Processing system revision	ontime	5432.8017505854	Sum of GTIs [s]
caldbver	4.5.1.1	 	ontime0	2448.8025022298	Sum of GTIs [s]
date	2012-08-30T20:56:41	Date and time of file creation	ontime1	2502.9350294471	Sum of GTIs [s]
revision	5	Processing version of data	ontime2	2390.5459122062	Sum of GTIs [s]
			ontime3	2361.212123096	Sum of GTIs [s]
			ontime6	2610.9773824215	Sum of GTIs [s]
			ontime7	5432.8017505854	Sum of GTIs [s]
			l1events	1554309	Number of level 1 events

2.1.4 Events

	ccd 0	ccd 1	ccd 2	ccd 3	ccd 6	ccd 7		ccd 0	ccd 1	ccd 2	ccd 3	ccd 6	ccd 7
level 1 events	212689	216981	210614	209760	237382	466883	grade 0 events	107204	110497	107611	107559	119087	114595
rejected events	18121	17809	18328	18751	19372	23917		50%	50%	51%	51%	50%	24%
rejected %	8%	8%	8%	8%	8%	5%	grade 1 events	579	514	542	514	559	296
								0%	0%	0%	0%	0%	0%
							grade 2 events	34363	34920	33324	33350	37999	98003
								16%	16%	15%	15%	16%	20%
							grade 3 events	12425	12414	12032	11846	13547	45500
								5%	5%	5%	5%	5%	9%
							grade 4 events	12136	12573	12046	11813	13315	45271
								5%	5%	5%	5%	5%	9%
							grade 5 events	1342	1458	1366	1431	1606	5742
								0%	0%	0%	0%	0%	1%
							grade 6 events	28440	28768	27273	26441	34062	139597
								13%	13%	12%	12%	14%	29%
							grade 7 events	16200	15837	16420	16806	17207	17879
								7%	7%	7%	8%	7%	3%

2.2 Compared Parameters

Parameter	Planned	Actual	Parameter	Planned	Actual
Instrument	ACIS	ACIS	Obspar format version number	7	7
Detector	ACIS-012367	ACIS-012367	Obspar file type	PREDICTED	ACTUAL
Grating	NONE	NONE	Obspar update status	NONE	UPDATED
Data mode	FAINT	FAINT	On-chip summing requested	N	N
Observation mode	SECONDARY	SECONDARY	Subarray requested	NONE	NONE
[deg] Pointing RA	0	158.9924131354952	Alternating exposures requested	N	N
[deg] Pointing Dec	0	-54.3769064172299	[s] Primary exposure time	0.000000	3.2
[deg] Pointing Roll	0.0	216.7401706998198			
[mm] SIM focus pos	-0.782348	-0.6828225247311905			
[mm] SIM defocus	0	0.8505141146731063			
[mm] SIM translation stage pos	-233.592463	250.466033080201			
[mm] SIM translation stage offset	0	-0.01005468664627074			
[s] Observation start time (MET)	80450825.169	80450824.400822			
Observation start date	2000-07-20T03:27:05	2000-07-20T03:27:04			
[s] Observation end time (MET)	80461335.52	80461334.751212			
Observation end date	2000-07-20T06:22:16	2000-07-20T06:22:14			
Read mode	TIMED	TIMED			

2.3 Star Slots

2.4 FID Slots

A Summary

A.1 Status

V&V Scientist	Jen Lauer
V&V Date (YYYY-MM-DD)	2012.09.05
V&V Edition	1
V&V Disposition and Status	OK
V&V Charge Time	5.4328017505854

A.2 Comments