

# V&V Reference Report

## L2 ASCDS Version : 8.4.5

Observation 61980 - L2 Version 4  
Chandra X-Ray Center

L2 Processing Date : Aug 30 2012

## Contents

<b>1</b>	<b>Front</b>	<b>2</b>
<b>2</b>	<b>OBI</b>	<b>3</b>
2.1	OBI . . . . .	3
2.1.1	Images . . . . .	3
2.1.2	Bias . . . . .	3
2.1.3	Parameters . . . . .	4
2.1.4	Events . . . . .	4
2.2	Compared Parameters . . . . .	5
2.3	Star Slots . . . . .	6
2.4	FID Slots . . . . .	6
<b>A</b>	<b>Summary</b>	<b>7</b>
A.1	Status . . . . .	7
A.2	Comments . . . . .	7

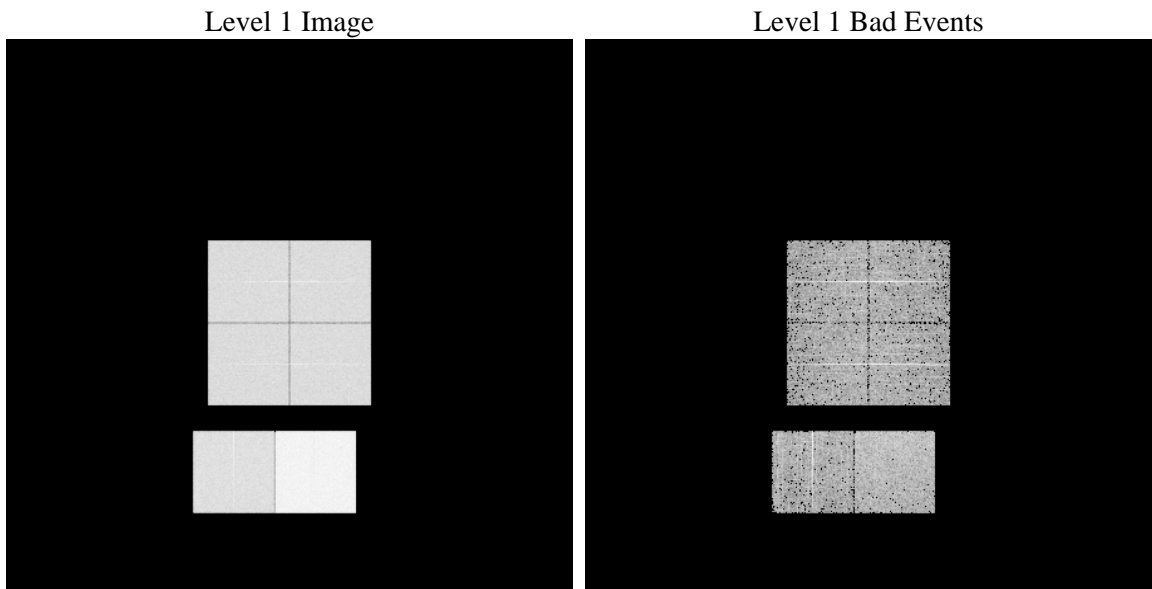
# 1 Front

seq_num	&#160	Sequence number
obs_id	61980	Observation id
title	ACIS-012367 diagnostics	Proposal title
observer	CHANDRA engineering request/realtime commanding	Principal investig
object	&#160	Source name
dtcycle	0	&#160
cycle	P	events from which exps? Prim/Second/Both
ra_targ	0.0	Observer's specified target RA [deg]
dec_targ	0.0	Observer's specified target Dec [deg]
ra_nom	171.13696474002	Nominal RA [deg]
dec_nom	-47.917440327749	Nominal Dec [deg]
roll_nom	219.9871981062	Nominal Roll [deg]
revision	4	Processing version of data
ontime	5530.0711806118	Sum of GTIs [s]
livetime	5460.0460895138	Livetime [s]
ontime0	2451.1201694459	Sum of GTIs [s]
ontime1	2445.5146933794	Sum of GTIs [s]
ontime2	2353.8892587721	Sum of GTIs [s]
ontime3	2403.2580137402	Sum of GTIs [s]
ontime6	2623.853893131	Sum of GTIs [s]
ontime7	5530.0711806118	Sum of GTIs [s]
l2events	1374745	Number of level 2 events

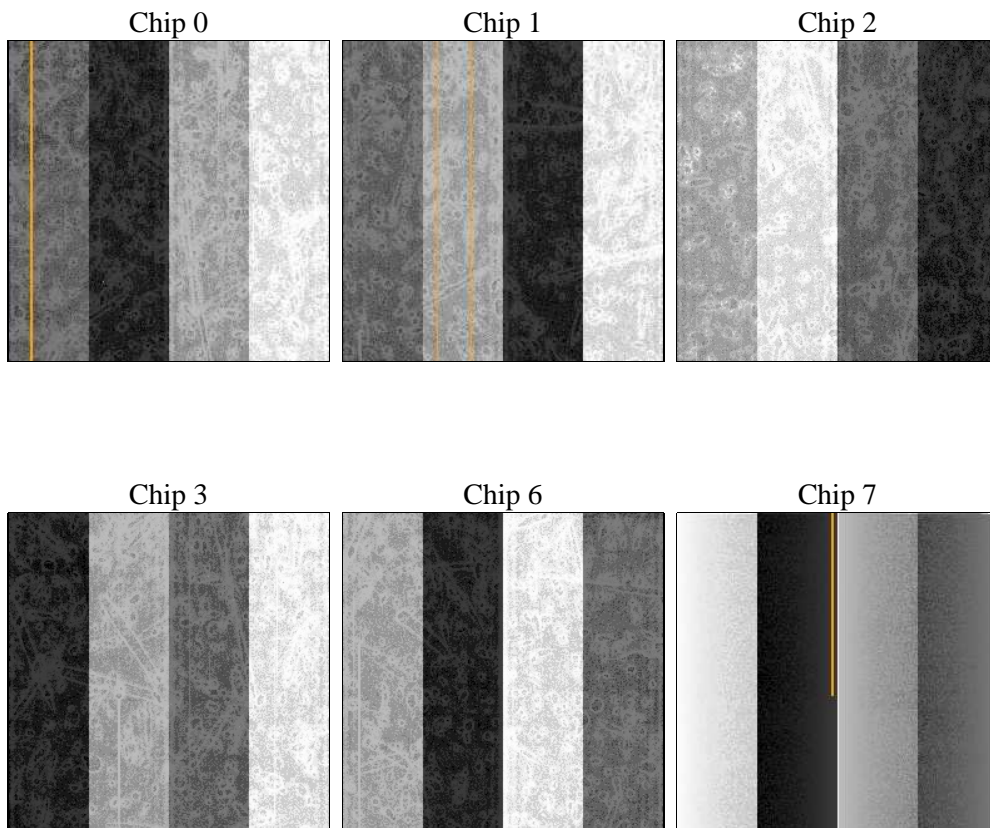
## 2 OBI

### 2.1 OBI

#### 2.1.1 Images



#### 2.1.2 Bias



### 2.1.3 Parameters

obi_num	0	Obi number	sched_exp_time	0.0	[s] Scheduled observation exposure time
ascdsver	8.4.5	Processing system revision	ontime	5530.0711806118	Sum of GTIs [s]
caldsver	4.5.1.1	&#160	ontime0	2451.1201694459	Sum of GTIs [s]
date	2012-08-30T23:53:27	Date and time of file creation	ontime1	2445.5146933794	Sum of GTIs [s]
revision	4	Processing version of data	ontime2	2353.8892587721	Sum of GTIs [s]
			ontime3	2403.2580137402	Sum of GTIs [s]
			ontime6	2623.853893131	Sum of GTIs [s]
			ontime7	5530.0711806118	Sum of GTIs [s]
			l1events	1553696	Number of level 1 events

### 2.1.4 Events

	ccd 0	ccd 1	ccd 2	ccd 3	ccd 6	ccd 7		ccd 0	ccd 1	ccd 2	ccd 3	ccd 6	ccd 7
level 1 events	212252	211408	207507	211056	237550	473923	grade 0 events	106738	106723	105177	107583	119186	115296
rejected events	18703	18066	18469	19252	19952	26537		50%	50%	50%	50%	50%	24%
rejected %	8%	8%	8%	9%	8%	5%	grade 1 events	547	533	589	567	602	293
								0%	0%	0%	0%	0%	0%
							grade 2 events	34169	34258	33112	33445	37133	99567
								16%	16%	15%	15%	15%	21%
							grade 3 events	12119	12469	11912	12029	13396	45351
								5%	5%	5%	5%	5%	9%
							grade 4 events	12368	11999	11888	12281	13410	45195
								5%	5%	5%	5%	5%	9%
							grade 5 events	1535	1436	1430	1428	1726	6159
								0%	0%	0%	0%	0%	1%
							grade 6 events	28155	27893	26949	26466	34473	141977
								13%	13%	12%	12%	14%	29%
							grade 7 events	16621	16097	16450	17257	17624	20085
								7%	7%	7%	8%	7%	4%

## 2.2 Compared Parameters

Parameter	Planned	Actual	Parameter	Planned	Actual
Instrument	ACIS	ACIS	Obspar format version number	7	7
Detector	ACIS-012367	ACIS-012367	Obspar file type	PREDICTED	ACTUAL
Grating	NONE	NONE	Obspar update status	NONE	UPDATED
Data mode	FAINT	FAINT	On-chip summing requested	N	N
Observation mode	SECONDARY	SECONDARY	Subarray requested	NONE	NONE
[deg] Pointing RA	0	171.1369647400248	Alternating exposures requested	N	N
[deg] Pointing Dec	0	-47.91744032774901	[s] Primary exposure time	3.2	3.2
[deg] Pointing Roll	0.0	219.987198106197			
[mm] SIM focus pos	-0.782348	-0.6828225247311905			
[mm] SIM defocus	0	0.8505141146731063			
[mm] SIM translation stage pos	-233.592463	250.4635187648994			
[mm] SIM translation stage offset	0	-0.007540371344731511			
[s] Observation start time (MET)	81365795.55330101	81365794.78483801			
Observation start date	2000-07-30T17:36:36	2000-07-30T17:36:34			
[s] Observation end time (MET)	81376305.90369201	81376305.13522901			
Observation end date	2000-07-30T20:31:46	2000-07-30T20:31:45			
Read mode	TIMED	TIMED			

## **2.3 Star Slots**

## **2.4 FID Slots**

## A Summary

### A.1 Status

V&V Scientist	Beth Sundheim
V&V Date (YYYY-MM-DD)	2012.09.05
V&V Edition	1
V&V Disposition and Status	OK
V&V Charge Time	5.5300711806118

### A.2 Comments