

# V&V Reference Report

## L2 ASCDS Version : 8.4.5

Observation 61976 - L2 Version 4  
Chandra X-Ray Center

L2 Processing Date : Aug 31 2012

## Contents

<b>1</b>	<b>Front</b>	<b>2</b>
<b>2</b>	<b>OBI</b>	<b>3</b>
2.1	OBI . . . . .	3
2.1.1	Images . . . . .	3
2.1.2	Bias . . . . .	3
2.1.3	Parameters . . . . .	4
2.1.4	Events . . . . .	4
2.2	Compared Parameters . . . . .	5
2.3	Star Slots . . . . .	6
2.4	FID Slots . . . . .	6
<b>A</b>	<b>Summary</b>	<b>7</b>
A.1	Status . . . . .	7
A.2	Comments . . . . .	7

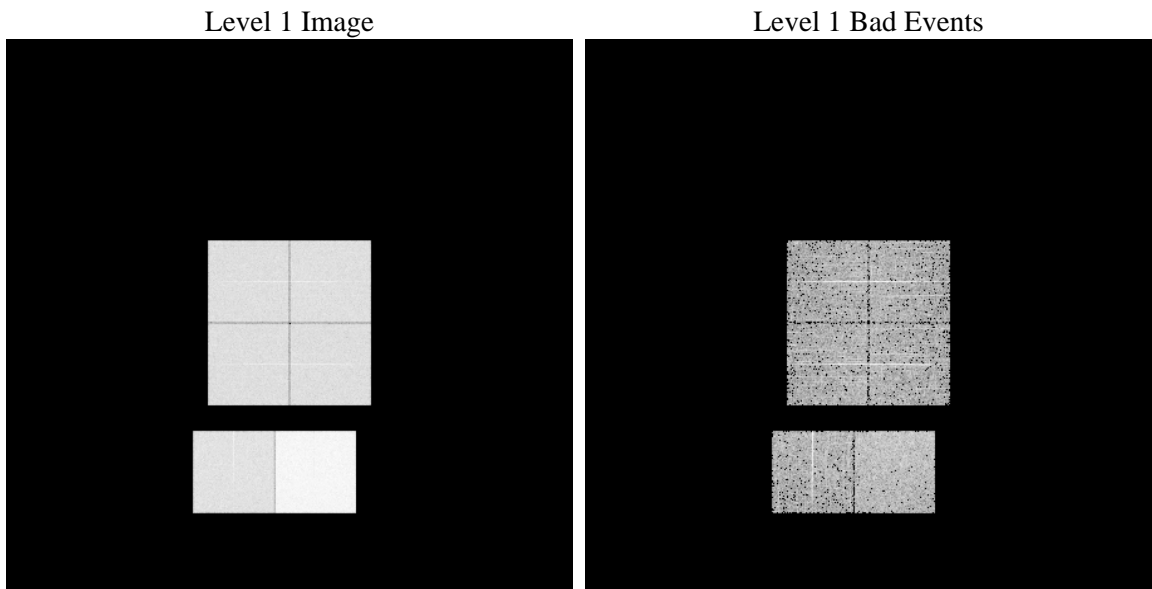
# 1 Front

seq_num	&#160	Sequence number
obs_id	61976	Observation id
title	ACIS-012367 diagnostics	Proposal title
observer	CHANDRA engineering request/realtime commanding	Principal investig
object	&#160	Source name
dtcycle	0	&#160
cycle	P	events from which exps? Prim/Second/Both
ra_targ	0.0	Observer's specified target RA [deg]
dec_targ	0.0	Observer's specified target Dec [deg]
ra_nom	0.81255402904708	Nominal RA [deg]
dec_nom	41.846798313699	Nominal Dec [deg]
roll_nom	133.99635444671	Nominal Roll [deg]
revision	4	Processing version of data
ontime	5115.8455554098	Sum of GTIs [s]
livetime	5051.0656385948	Livetime [s]
ontime0	2241.0357514024	Sum of GTIs [s]
ontime1	2286.3693310469	Sum of GTIs [s]
ontime2	2177.9771393538	Sum of GTIs [s]
ontime3	2169.815111056	Sum of GTIs [s]
ontime6	2398.3677989393	Sum of GTIs [s]
ontime7	5115.8455554098	Sum of GTIs [s]
l2events	1261964	Number of level 2 events

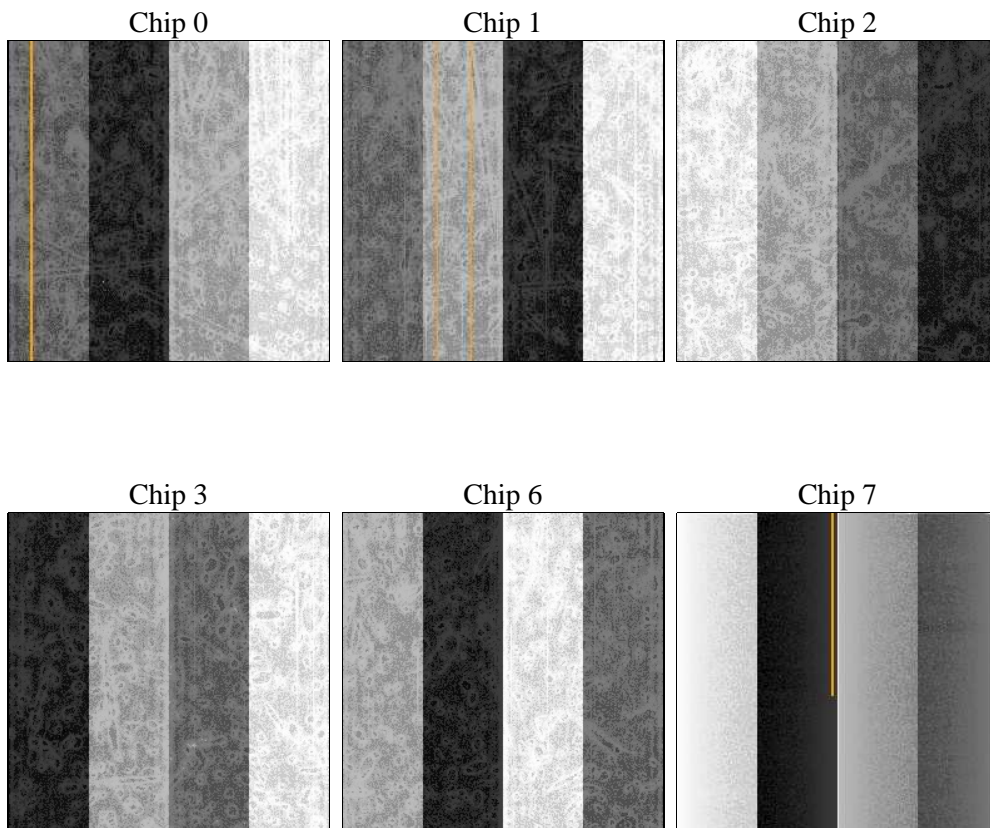
## 2 OBI

### 2.1 OBI

#### 2.1.1 Images



#### 2.1.2 Bias



### 2.1.3 Parameters

obi_num	0	Obi number	sched_exp_time	0.0	[s] Scheduled observation exposure time
ascdsver	8.4.5	Processing system revision	ontime	5115.8455554098	Sum of GTIs [s]
caldsver	4.5.1.1	&#160	ontime0	2241.0357514024	Sum of GTIs [s]
date	2012-08-31T15:46:44	Date and time of file creation	ontime1	2286.3693310469	Sum of GTIs [s]
revision	4	Processing version of data	ontime2	2177.9771393538	Sum of GTIs [s]
			ontime3	2169.815111056	Sum of GTIs [s]
			ontime6	2398.3677989393	Sum of GTIs [s]
			ontime7	5115.8455554098	Sum of GTIs [s]
			l1events	1431861	Number of level 1 events

### 2.1.4 Events

	ccd 0	ccd 1	ccd 2	ccd 3	ccd 6	ccd 7		ccd 0	ccd 1	ccd 2	ccd 3	ccd 6	ccd 7
level 1 events	193126	198591	191938	191119	218529	438558	grade 0 events	97149	100329	96538	96990	109412	106296
rejected events	17121	17898	18423	18651	18963	25454		50%	50%	50%	50%	50%	24%
rejected %	8%	9%	9%	9%	8%	5%	grade 1 events	533	506	492	492	513	285
								0%	0%	0%	0%	0%	0%
							grade 2 events	31189	31616	30350	30240	34713	91630
								16%	15%	15%	15%	15%	20%
							grade 3 events	11063	11508	11072	10766	12127	42673
								5%	5%	5%	5%	5%	9%
							grade 4 events	11268	11512	10928	10874	12144	41744
								5%	5%	5%	5%	5%	9%
							grade 5 events	1326	1405	1294	1276	1604	5801
								0%	0%	0%	0%	0%	1%
							grade 6 events	25564	25987	24627	23870	31170	130992
								13%	13%	12%	12%	14%	29%
							grade 7 events	15034	15728	16637	16611	16846	19137
								7%	7%	8%	8%	7%	4%

## 2.2 Compared Parameters

Parameter	Planned	Actual	Parameter	Planned	Actual
Instrument	ACIS	ACIS	Obspar format version number	7	7
Detector	ACIS-012367	ACIS-012367	Obspar file type	PREDICTED	ACTUAL
Grating	NONE	NONE	Obspar update status	NONE	UPDATED
Data mode	FAINT	FAINT	On-chip summing requested	N	N
Observation mode	SECONDARY	SECONDARY	Subarray requested	NONE	NONE
[deg] Pointing RA	0	0.8125540290470781	Alternating exposures requested	N	N
[deg] Pointing Dec	0	41.84679831369854	[s] Primary exposure time	0.000000	3.2
[deg] Pointing Roll	0.0	133.9963544467102			
[mm] SIM focus pos	-0.782348	-0.7809083437167272			
[mm] SIM defocus	0	0.7524282956875696			
[mm] SIM translation stage pos	-233.592463	250.466033080201			
[mm] SIM translation stage offset	0	-0.01005468664627074			
[s] Observation start time (MET)	81777041.969	81777041.200137			
Observation start date	2000-08-04T11:50:42	2000-08-04T11:50:41			
[s] Observation end time (MET)	81820672.12	81820671.351752			
Observation end date	2000-08-04T23:57:52	2000-08-04T23:57:51			
Read mode	TIMED	TIMED			

## 2.3 Star Slots

## 2.4 FID Slots

## **A Summary**

### **A.1 Status**

V&V Scientist	Jen Lauer
V&V Date (YYYY-MM-DD)	2012.09.06
V&V Edition	1
V&V Disposition and Status	OK
V&V Charge Time	5.1158455554098

### **A.2 Comments**