

# V&V Reference Report

## L2 ASCDS Version : 7.6.10

Observation 61969 - L2 Version 001  
Chandra X-Ray Center

L2 Processing Date : Jun 2 2007

## Contents

<b>1</b>	<b>Front</b>	<b>2</b>
<b>2</b>	<b>OBI</b>	<b>3</b>
2.1	OBI . . . . .	3
2.1.1	Images . . . . .	3
2.1.2	Bias . . . . .	3
2.1.3	Parameters . . . . .	4
2.1.4	Events . . . . .	4
2.2	Compared Parameters . . . . .	5
2.3	Star Slots . . . . .	6
2.4	FID Slots . . . . .	6
<b>A</b>	<b>Summary</b>	<b>7</b>
A.1	Status . . . . .	7
A.2	Comments . . . . .	7

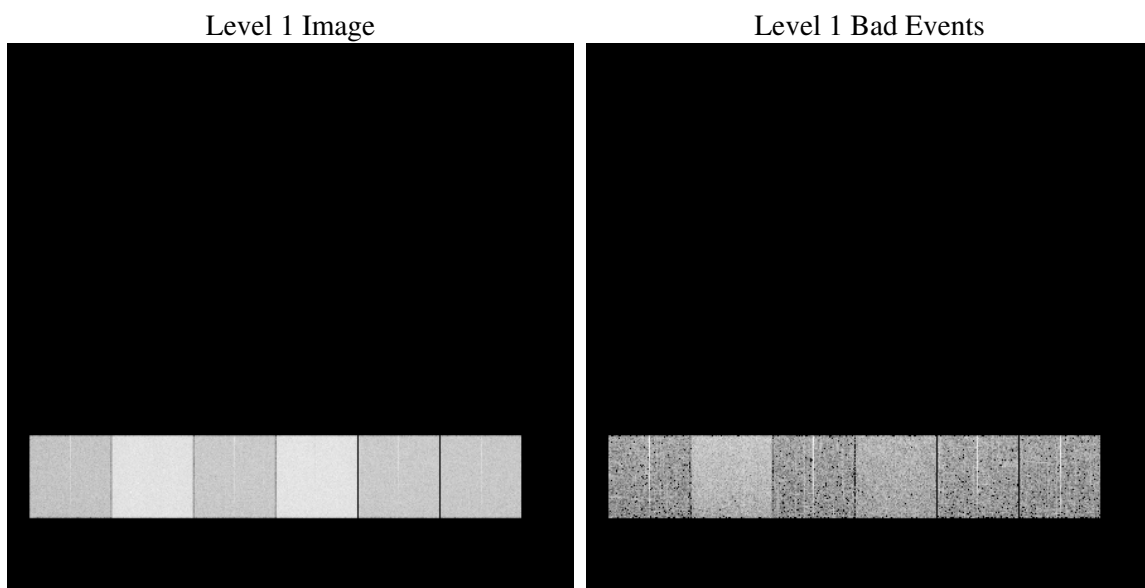
# 1 Front

seq_num	&#160
obs_id	61969
title	ACIS-456789 diagnostics
observer	CHANDRA engineering request/realtime commanding
object	&#160
dtcycle	0
cycle	P
ra_targ	0.0
dec_targ	0.0
ra_nom	176.83651433171
dec_nom	-44.387264916885
roll_nom	218.06395536311
revision	3
ontime	4664.6537097692
livetime	4605.5870557789
ontime4	2016.8654243648
ontime5	5021.2012126893
ontime6	2195.0814442635
ontime7	4664.6537097692
ontime8	2195.163584128
ontime9	2201.4405438751
l2events	1353119

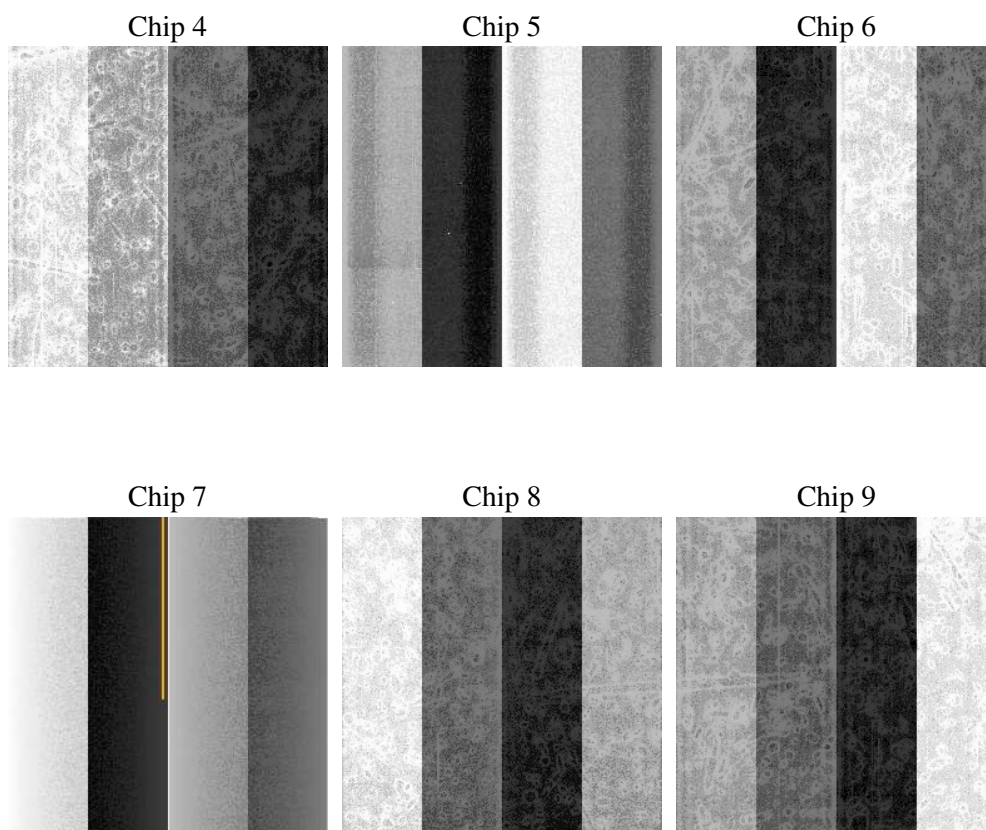
## 2 OBI

### 2.1 OBI

#### 2.1.1 Images



#### 2.1.2 Bias



### 2.1.3 Parameters

obi_num	0
ascdsver	7.6.10
caldsver	3.4.0
date	2007-06-02T13:59:39
revision	3

sched_exp_time	0.0
ontime	4664.6537097692
ontime4	2016.8654243648
ontime5	5021.2012126893
ontime6	2195.0814442635
ontime7	4664.6537097692
ontime8	2195.163584128
ontime9	2201.4405438751
l1events	1557394

### 2.1.4 Events

	ccd 4	ccd 5	ccd 6	ccd 7	ccd 8	ccd 9
level 1 events	172521	387260	200357	401976	201705	193575
rejected events	19690	40265	19595	27439	21137	19394
rejected %	11%	10%	9%	6%	10%	10%

	ccd 4	ccd 5	ccd 6	ccd 7	ccd 8	ccd 9
grade 0 events	87778	86730	100015	97768	101193	97733
	50%	22%	49%	24%	50%	50%
grade 1 events	467	257	471	251	496	450
	0%	0%	0%	0%	0%	0%
grade 2 events	27463	125997	31796	83267	32602	31031
	15%	32%	15%	20%	16%	16%
grade 3 events	9502	22765	11327	39007	11531	10935
	5%	5%	5%	9%	5%	5%
grade 4 events	9535	22823	11283	38493	11238	10827
	5%	5%	5%	9%	5%	5%
grade 5 events	1254	7525	1403	5087	1509	1362
	0%	1%	0%	1%	0%	0%
grade 6 events	20814	93441	28765	121361	26893	26485
	12%	24%	14%	30%	13%	13%
grade 7 events	15708	27722	15297	16742	16243	14752
	9%	7%	7%	4%	8%	7%

## 2.2 Compared Parameters

Parameter	Planned	Actual	Parameter	Planned	Actual
Instrument	ACIS	ACIS	Obspar format version number	6	6
Detector	ACIS-456789	ACIS-456789	Obspar file type	PREDICTED	ACTUAL
Grating	NONE	NONE	Obspar update status	NONE	UPDATED
Data mode	FAINT	FAINT	On-chip summing requested	N	N
Observation mode	SECONDARY	SECONDARY	Subarray requested	NONE	NONE
Pointing RA	0	176.8365143317129	Alternating exposures requested	N	N
Pointing Dec	0	-44.38726491688501	Primary exposure time	0.000000	3.2
Pointing Roll	0.0	218.0639553631052			
SIM focus pos (mm)	-0.684267	-1.428180813131781			
SIM defocus (mm)	0	0.1051558262725154			
SIM translation stage pos (mm)	-190.132523	250.466033080201			
SIM translation stage offset (mm)	0	-0.01005468664627074			
Observation start time	82282180.43700001	82282179.66895001			
Observation start date	2000-08-10T08:09:40	2000-08-10T08:09:39			
Observation end time	82292690.788	82292690.01934201			
Observation end date	2000-08-10T11:04:51	2000-08-10T11:04:50			
Read mode	TIMED	TIMED			

## **2.3 Star Slots**

## **2.4 FID Slots**

# A Summary

## A.1 Status

V&V Scientist	Jen Lauer
V&V Date (YYYY-MM-DD)	2007.06.04
V&V Edition	1
V&V Disposition and Status	OK
V&V Charge Time	4.6646537

## A.2 Comments

Focal plane temperature is warmer than -118.7 C degrees during the first 3 ksec of this observation. The ACIS spectral response calibration for the front-illuminated chips is less accurate at these warmer temperatures than it is at -119.7 C. The back-illuminatd chips are not affected at the focal plane temperatures recorded for this observation. Users whose science objectives depend on the most accurate spectral response (i.e.: fitting line-rich spectra) may notice an effect. Users whose science objectives do not depend on the most accurate spectral response should not notice an effect.