

V&V Reference Report

L2 ASCDS Version : 7.6.10

Observation 61938 - L2 Version 001
Chandra X-Ray Center

L2 Processing Date : Jun 7 2007

Contents

1	Front	2
2	OBI	3
2.1	OBI	3
2.1.1	Images	3
2.1.2	Bias	3
2.1.3	Parameters	4
2.1.4	Events	4
2.2	Compared Parameters	5
2.3	Star Slots	6
2.4	FID Slots	6
A	Summary	7
A.1	Status	7
A.2	Comments	7

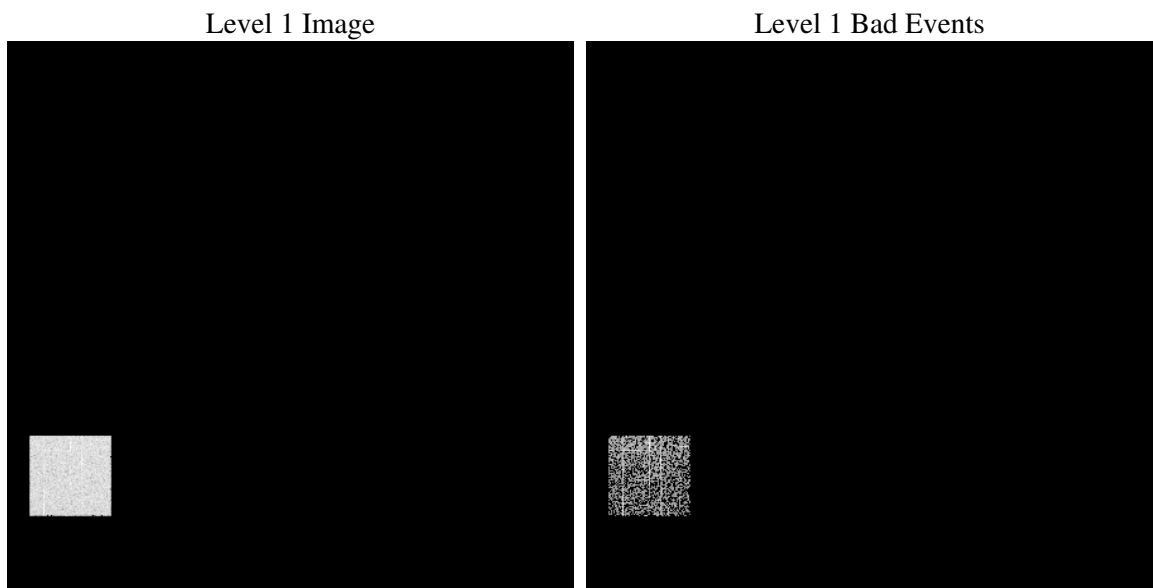
1 Front

seq_num	
obs_id	61938
title	ACIS-4 diagnostics
observer	CHANDRA engineering request/realtime commanding
object	
dtcycle	0
cycle	P
ra_targ	0.0
dec_targ	0.0
ra_nom	76.942123528985
dec_nom	-3.0566134859561
roll_nom	95.773532201354
revision	2
ontime	590.68650791049
livetime	583.43075093522
ontime4	590.68650791049
l2events	37613

2 OBI

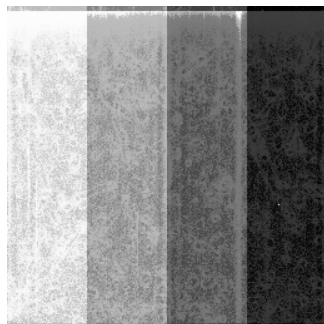
2.1 OBI

2.1.1 Images



2.1.2 Bias

Chip 4



2.1.3 Parameters

obi_num	0
ascdsver	7.6.10
caldbver	3.4.0
date	2007-06-07T03:39:51
revision	2

sched_exp_time	0.0
ontime	590.68650791049
ontime4	590.68650791049
l1events	48515

2.1.4 Events

	ccd 4
level 1 events	48515
rejected events	5625
rejected %	11%

	ccd 4
grade 0 events	24048
	49%
grade 1 events	135
	0%
grade 2 events	7627
	15%
grade 3 events	2557
	5%
grade 4 events	2698
	5%
grade 5 events	366
	0%
grade 6 events	5960
	12%
grade 7 events	5124
	10%

2.2 Compared Parameters

Parameter	Planned	Actual	Parameter	Planned	Actual
Instrument	ACIS	ACIS	Obspar format version number	6	6
Detector	ACIS-4	ACIS-4	Obspar file type	PREDICTED	ACTUAL
Grating	NONE	NONE	Obspar update status	NONE	UPDATED
Data mode	FAINT	FAINT	On-chip summing requested	N	N
Observation mode	SECONDARY	SECONDARY	Subarray requested	NONE	NONE
Pointing RA	0	76.94212352898501	Alternating exposures requested	N	N
Pointing Dec	0	-3.056613485956147	Primary exposure time	0.000000	3.3
Pointing Roll	0.0	95.77353220135407			
SIM focus pos (mm)	-0.684267	-0.7809083437167272			
SIM defocus (mm)	0	0.7524282956875696			
SIM translation stage pos (mm)	-190.132523	250.466033080201			
SIM translation stage offset (mm)	0	-0.01005468664627074			
Observation start time	84747192.78	84747192.01138701			
Observation start date	2000-09-07T20:53:13	2000-09-07T20:53:12			
Observation end time	84748884.03	84748883.26145101			
Observation end date	2000-09-07T21:21:24	2000-09-07T21:21:23			
Read mode	TIMED	TIMED			

2.3 Star Slots

2.4 FID Slots

A Summary

A.1 Status

V&V Scientist	Jen Lauer
V&V Date (YYYY-MM-DD)	2007.06.07
V&V Edition	1
V&V Disposition and Status	OK
V&V Charge Time	0.5906865

A.2 Comments

Squeegy mode diagnostic observation; bias map is non-standard.