

# V&V Reference Report

## L2 ASCDS Version : 8.4.5

Observation 61919 - L2 Version 4  
Chandra X-Ray Center

L2 Processing Date : Sep 1 2012

## Contents

<b>1</b>	<b>Front</b>	<b>2</b>
<b>2</b>	<b>OBI Primary</b>	<b>3</b>
2.1	OBI . . . . .	3
2.1.1	Images . . . . .	3
2.1.2	Bias . . . . .	3
2.1.3	Parameters . . . . .	4
2.1.4	Events . . . . .	4
2.2	Compared Parameters . . . . .	5
2.3	Star Slots . . . . .	6
2.4	FID Slots . . . . .	6
<b>3</b>	<b>OBI Secondary</b>	<b>6</b>
3.1	OBI . . . . .	6
3.1.1	Images . . . . .	6
3.1.2	Bias . . . . .	6
3.1.3	Parameters . . . . .	7
3.1.4	Events . . . . .	7
<b>A</b>	<b>Summary</b>	<b>8</b>
A.1	Status . . . . .	8
A.2	Comments . . . . .	8

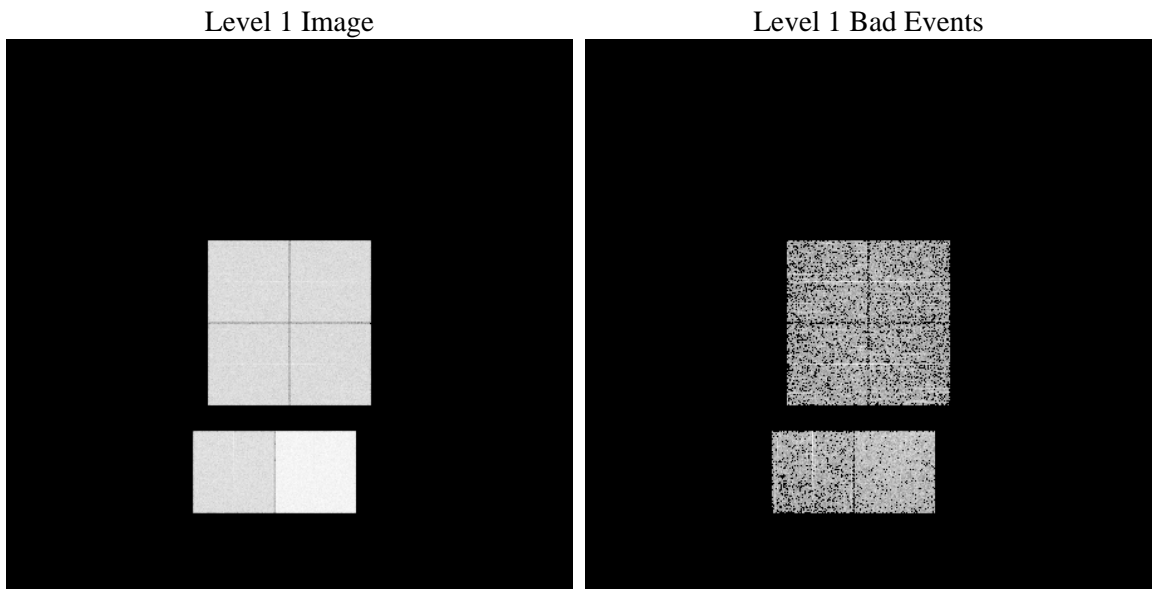
# 1 Front

seq_num	&#160	Sequence number
obs_id	61919	Observation id
title	ACIS-012367 diagnostics	Proposal title
observer	CHANDRA engineering request/realtime commanding	Principal investig
object	&#160	Source name
dtcycle	0	&#160
cycle	P	events are from which exps? P[rimary] S[econdar
ra_targ	0.0	Observer's specified target RA [deg]
dec_targ	0.0	Observer's specified target Dec [deg]
ra_nom	265.48647791991	Nominal RA [deg]
dec_nom	-29.713606640858	Nominal Dec [deg]
roll_nom	268.26408108291	Nominal Roll [deg]
revision	4	Processing version of data
ontime	3420.3016518801	Sum of GTIs [s]
livetime	3385.5657473127	Livetime [s]
ontime0	1430.5281611681	Sum of GTIs [s]
ontime1	1403.6995702386	Sum of GTIs [s]
ontime2	1355.2481302023	Sum of GTIs [s]
ontime3	1367.4122902006	Sum of GTIs [s]
ontime6	1492.7666103095	Sum of GTIs [s]
ontime7	3420.3016518801	Sum of GTIs [s]
l2events	781007	Number of level 2 events

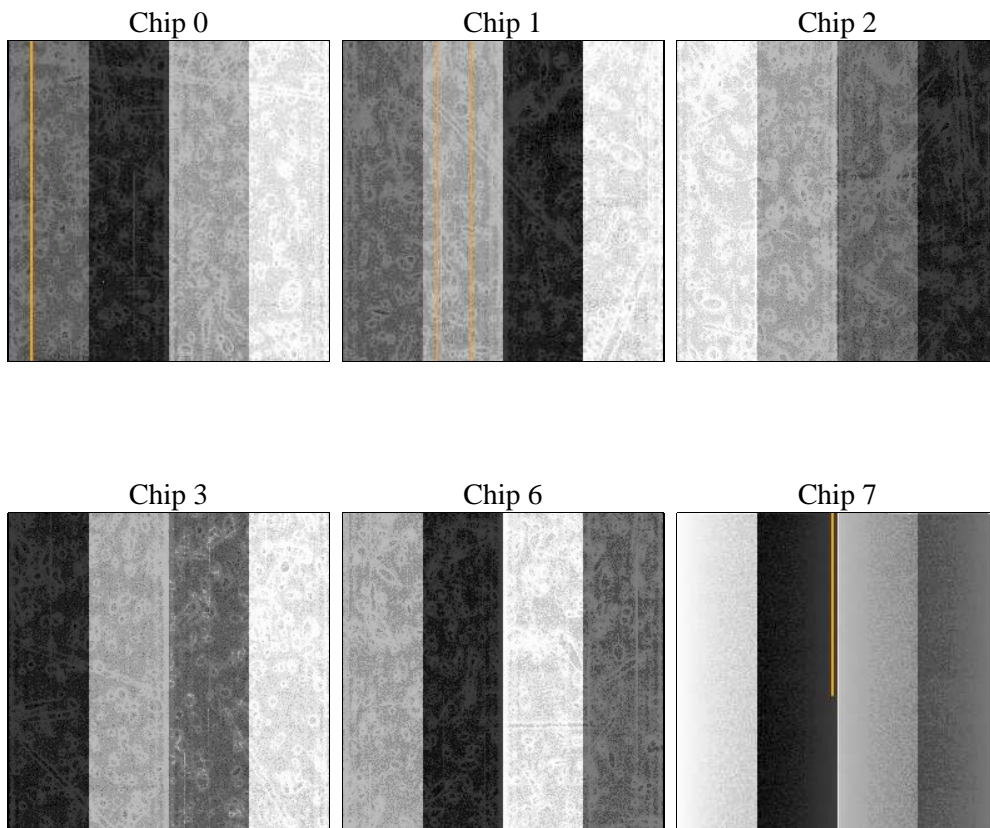
## 2 OBI Primary

### 2.1 OBI

#### 2.1.1 Images



#### 2.1.2 Bias



### 2.1.3 Parameters

obi_num	2	Obi number	sched_exp_time	0.0	[s] Scheduled observation exposure time
ascdsver	8.4.5	Processing system revision	ontime	3420.3016518801	Sum of GTIs [s]
caldsver	4.5.1.1	&#160	ontime0	1430.5281611681	Sum of GTIs [s]
date	2012-09-01T23:04:22	Date and time of file creation	ontime1	1403.6995702386	Sum of GTIs [s]
revision	4	Processing version of data	ontime2	1355.2481302023	Sum of GTIs [s]
			ontime3	1367.4122902006	Sum of GTIs [s]
			ontime6	1492.7666103095	Sum of GTIs [s]
			ontime7	3420.3016518801	Sum of GTIs [s]
			l1events	878033	Number of level 1 events

### 2.1.4 Events

	ccd 0	ccd 1	ccd 2	ccd 3	ccd 6	ccd 7		ccd 0	ccd 1	ccd 2	ccd 3	ccd 6	ccd 7
level 1 events	118314	116671	115229	115785	130503	281531	grade 0 events	59845	59363	59023	59219	65677	69703
rejected events	9889	9577	9873	9981	10739	14753		50%	50%	51%	51%	50%	24%
rejected %	8%	8%	8%	8%	8%	5%	grade 1 events	341	336	348	355	343	224
								0%	0%	0%	0%	0%	0%
							grade 2 events	18893	18964	18352	18556	20824	59205
								15%	16%	15%	16%	15%	21%
							grade 3 events	6983	6679	6709	6716	7279	27426
								5%	5%	5%	5%	5%	9%
							grade 4 events	6908	6865	6582	6730	7313	27108
								5%	5%	5%	5%	5%	9%
							grade 5 events	799	804	774	799	918	3450
								0%	0%	0%	0%	0%	1%
							grade 6 events	15796	15523	15001	14874	19002	83659
								13%	13%	13%	12%	14%	29%
							grade 7 events	8749	8137	8440	8536	9147	10756
								7%	6%	7%	7%	7%	3%

## 2.2 Compared Parameters

Parameter	Planned	Actual
Instrument	ACIS	ACIS
Detector	ACIS-012367	ACIS-012367
Grating	NONE	NONE
Data mode	FAINT	FAINT
Observation mode	SECONDARY	SECONDARY
[deg] Pointing RA	0	265.4864779199058
[deg] Pointing Dec	0	-29.71360664085794
[deg] Pointing Roll	0.0	268.2640810829087
[mm] SIM focus pos	-0.782348	-0.6828225247311905
[mm] SIM defocus	0	0.8505141146731063
[mm] SIM translation stage pos	-233.592463	250.466033080201
[mm] SIM translation stage offset	0	-0.01005468664627074
[s] Observation start time (MET)	85660961.86399999	85660961.095727
Observation start date	2000-09-18T10:42:42	2000-09-18T10:42:41
[s] Observation end time (MET)	85687618.015	85687617.24673
Observation end date	2000-09-18T18:06:58	2000-09-18T18:06:57
Read mode	TIMED	TIMED

Parameter	Planned	Actual
Obspar format version number	7	7
Obspar file type	PREDICTED	ACTUAL
Obspar update status	NONE	UPDATED
On-chip summing requested	N	N
Subarray requested	NONE	NONE
Alternating exposures requested	N	Y
[s] Primary exposure time	0.000000	4
[s] Secondary exposure time	N/A	3.2
Duty cycle	N/A	1

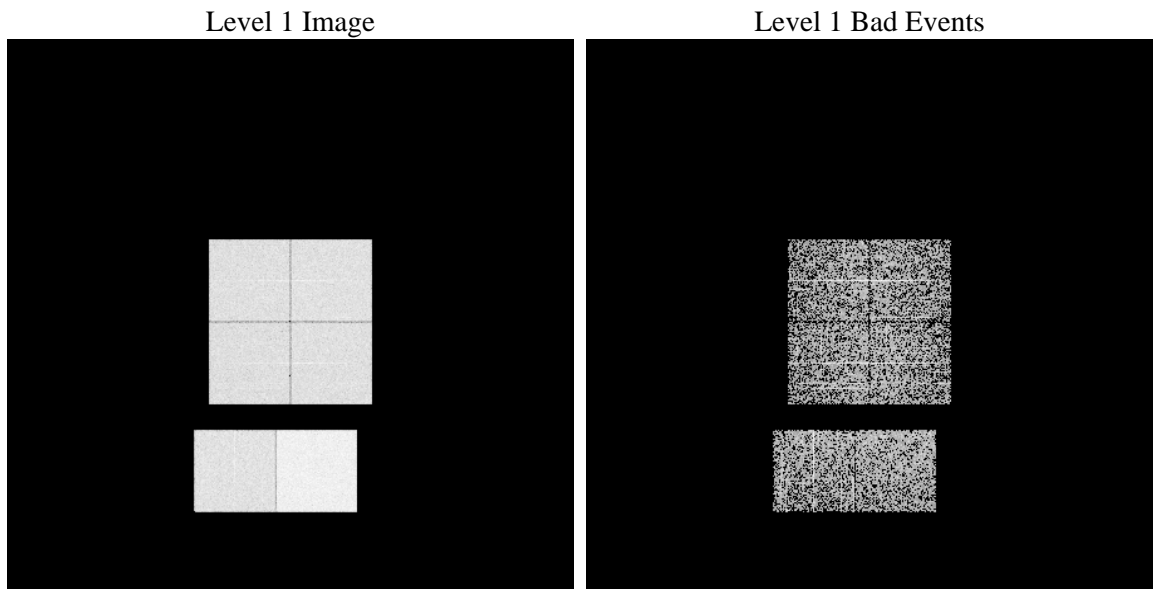
## 2.3 Star Slots

## 2.4 FID Slots

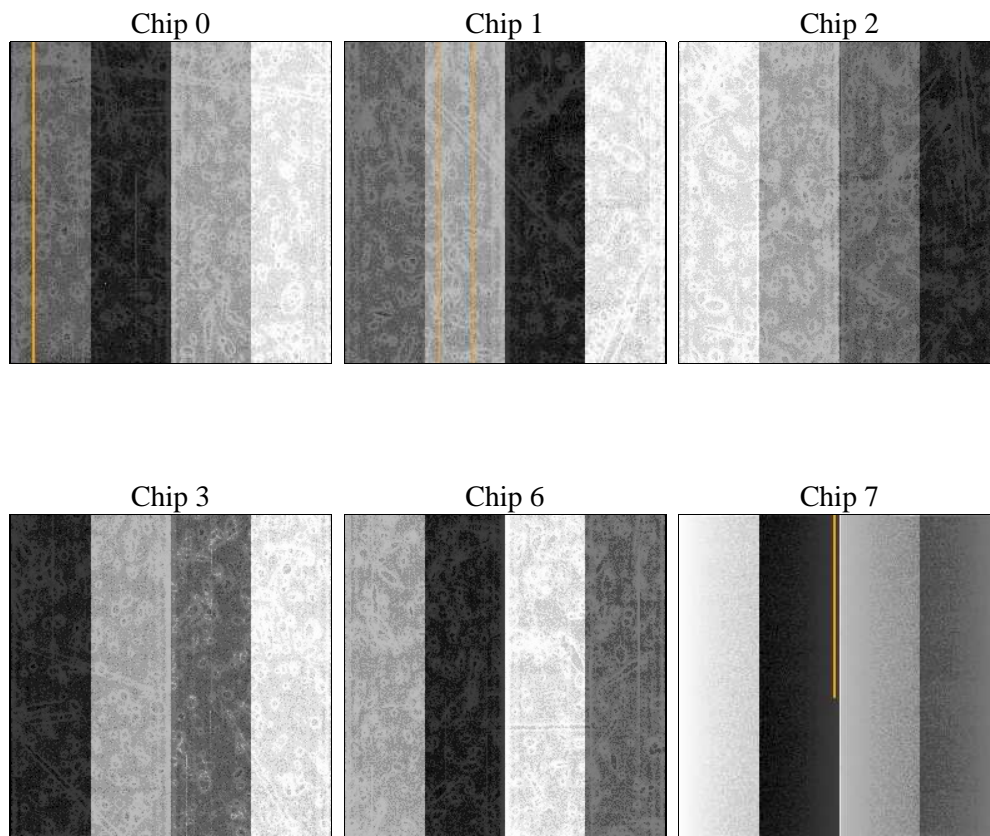
# 3 OBI Secondary

## 3.1 OBI

### 3.1.1 Images



### 3.1.2 Bias



### 3.1.3 Parameters

obi_num	2	Obi number	sched_exp_time	0.0	[s] Scheduled observation exposure time
ascdsver	8.4.5	Processing system revision	ontime	1713.1426410228	Sum of GTIs [s]
caldsver	4.5.1.1	&#160	ontime0	977.59072297812	Sum of GTIs [s]
date	2012-09-01T23:02:25	Date and time of file creation	ontime1	1022.9242428541	Sum of GTIs [s]
revision	4	Processing version of data	ontime2	919.1699231267	Sum of GTIs [s]
			ontime3	961.32615248859	Sum of GTIs [s]
			ontime6	1006.5548828989	Sum of GTIs [s]
			ontime7	1713.1426410228	Sum of GTIs [s]
			l1events	556996	Number of level 1 events

### 3.1.4 Events

	ccd 0	ccd 1	ccd 2	ccd 3	ccd 6	ccd 7
level 1 events	81295	85167	78224	81897	88750	141663
rejected events	6473	6661	6815	7137	7578	7542
rejected %	7%	7%	8%	8%	8%	5%

	ccd 0	ccd 1	ccd 2	ccd 3	ccd 6	ccd 7
grade 0 events	41322	43288	39842	42087	44246	34598
	50%	50%	50%	51%	49%	24%
grade 1 events	209	199	217	217	225	106
	0%	0%	0%	0%	0%	0%
grade 2 events	13273	13874	12528	13107	14168	29586
	16%	16%	16%	16%	15%	20%
grade 3 events	4760	5001	4571	4708	5012	13977
	5%	5%	5%	5%	5%	9%
grade 4 events	4713	4871	4456	4751	4904	13709
	5%	5%	5%	5%	5%	9%
grade 5 events	551	582	527	550	650	1743
	0%	0%	0%	0%	0%	1%
grade 6 events	10754	11472	10012	10353	12842	42251
	13%	13%	12%	12%	14%	29%
grade 7 events	5713	5880	6071	6124	6703	5693
	7%	6%	7%	7%	7%	4%



## **A Summary**

### **A.1 Status**

V&V Scientist	Jen Lauer
V&V Date (YYYY-MM-DD)	2012.09.10
V&V Edition	1
V&V Disposition and Status	OK
V&V Charge Time	5.1334442929029

### **A.2 Comments**