

V&V Reference Report

L2 ASCDS Version : 7.6.10

Observation 61910 - L2 Version 001
Chandra X-Ray Center

L2 Processing Date : Jun 8 2007

Contents

1	Front	2
2	OBI	3
2.1	OBI	3
2.1.1	Images	3
2.1.2	Bias	3
2.1.3	Parameters	4
2.1.4	Events	4
2.2	Compared Parameters	5
2.3	Star Slots	6
2.4	FID Slots	6
A	Summary	7
A.1	Status	7
A.2	Comments	7

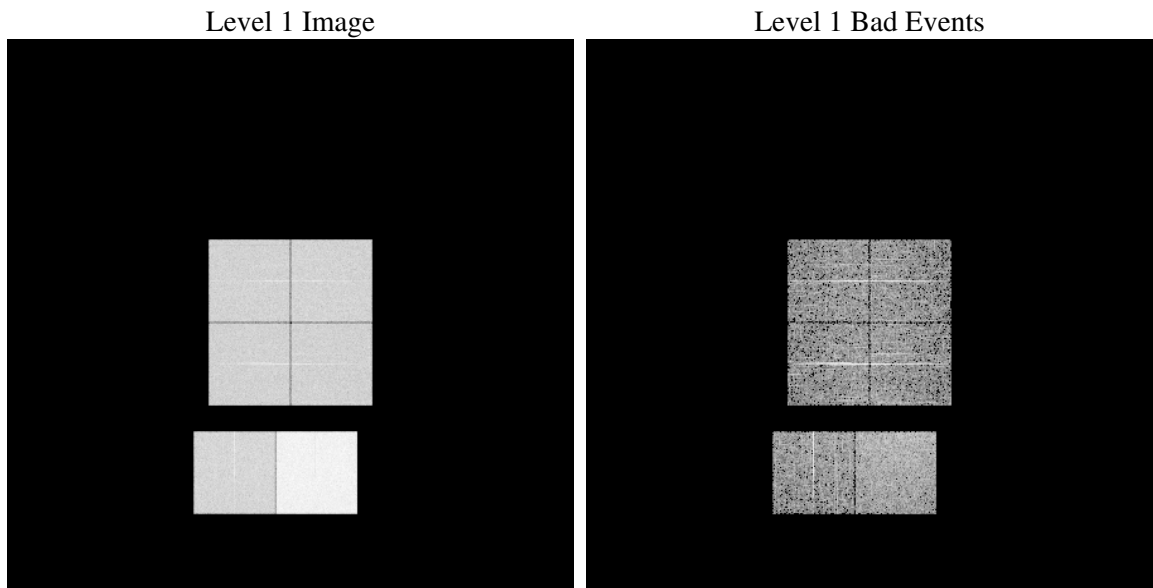
1 Front

seq_num	
obs_id	61910
title	ACIS-012367 diagnostics
observer	CHANDRA engineering request/realtime commanding
object	
dtcycle	0
cycle	P
ra_targ	0.0
dec_targ	0.0
ra_nom	327.92813101738
dec_nom	-42.327559542649
roll_nom	316.40098074518
revision	2
ontime	5316.7186840028
livetime	5249.3951906823
ontime0	2318.8354230076
ontime1	2361.0098434389
ontime2	2260.5786634982
ontime3	2237.7273432314
ontime6	2445.3586939126
ontime7	5316.7186840028
l2events	1260890

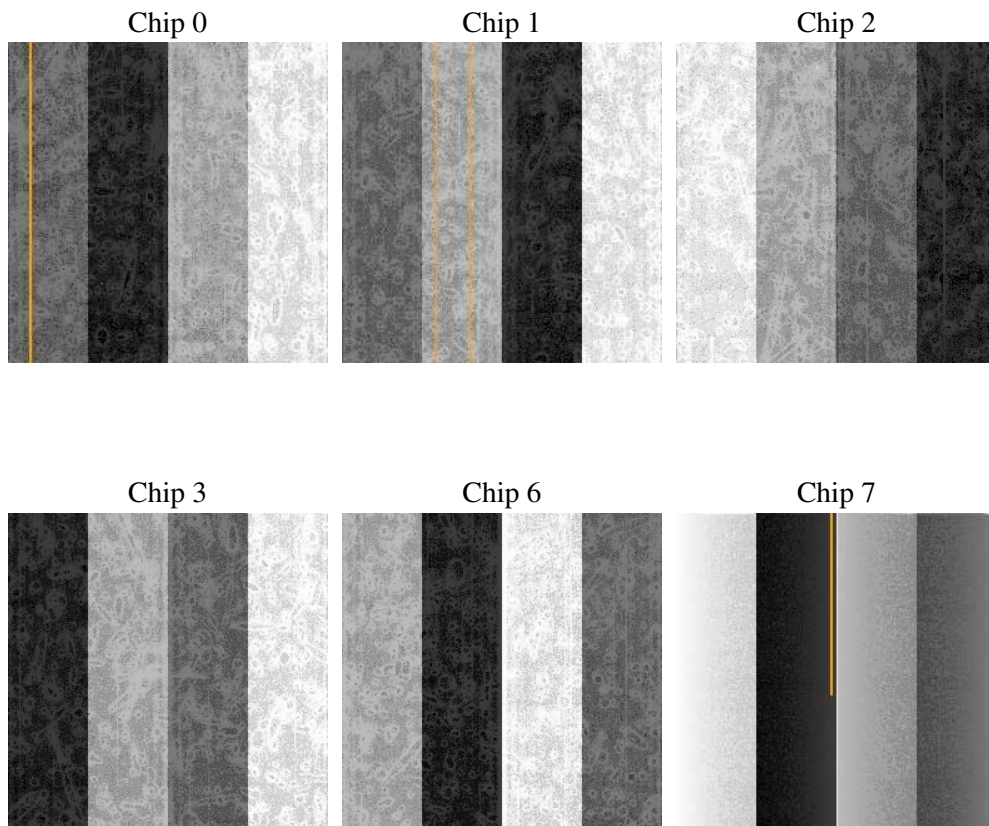
2 OBI

2.1 OBI

2.1.1 Images



2.1.2 Bias



2.1.3 Parameters

obi_num	0
ascdsver	7.6.10
caldbver	3.4.0
date	2007-06-08T15:46:11
revision	2

sched_exp_time	0.0
ontime	5316.7186840028
ontime0	2318.8354230076
ontime1	2361.0098434389
ontime2	2260.5786634982
ontime3	2237.7273432314
ontime6	2445.3586939126
ontime7	5316.7186840028
l1events	1431400

2.1.4 Events

	ccd 0	ccd 1	ccd 2	ccd 3	ccd 6	ccd 7
level 1 events	193693	197835	191943	190773	214952	442204
rejected events	17788	17167	18431	18300	19253	26671
rejected %	9%	8%	9%	9%	8%	6%

	ccd 0	ccd 1	ccd 2	ccd 3	ccd 6	ccd 7
grade 0 events	97578	100094	97078	97109	106843	107924
	50%	50%	50%	50%	49%	24%
grade 1 events	504	477	522	559	544	258
	0%	0%	0%	0%	0%	0%
grade 2 events	31107	31797	30072	30006	33852	92115
	16%	16%	15%	15%	15%	20%
grade 3 events	11193	11370	10966	10903	12115	42858
	5%	5%	5%	5%	5%	9%
grade 4 events	10983	11423	10929	11028	12075	42419
	5%	5%	5%	5%	5%	9%
grade 5 events	1362	1340	1247	1378	1528	5860
	0%	0%	0%	0%	0%	1%
grade 6 events	25280	26242	24671	23648	31073	130469
	13%	13%	12%	12%	14%	29%
grade 7 events	15686	15092	16458	16142	16922	20301
	8%	7%	8%	8%	7%	4%

2.2 Compared Parameters

Parameter	Planned	Actual	Parameter	Planned	Actual
Instrument	ACIS	ACIS	Obspar format version number	6	6
Detector	ACIS-012367	ACIS-012367	Obspar file type	PREDICTED	ACTUAL
Grating	NONE	NONE	Obspar update status	NONE	UPDATED
Data mode	FAINT	FAINT	On-chip summing requested	N	N
Observation mode	SECONDARY	SECONDARY	Subarray requested	NONE	NONE
Pointing RA	0	327.9281310173785	Alternating exposures requested	N	N
Pointing Dec	0	-42.32755954264928	Primary exposure time	3.2	3.2
Pointing Roll	0.0	316.4009807451775			
SIM focus pos (mm)	-0.782348	-0.6828225247311905			
SIM defocus (mm)	0	0.8505141146731063			
SIM translation stage pos (mm)	-233.592463	250.466033080201			
SIM translation stage offset (mm)	0	-0.01005468664627074			
Observation start time	86117384.131373	86117383.362902			
Observation start date	2000-09-23T17:29:44	2000-09-23T17:29:43			
Observation end time	86166774.783233	86166774.014761			
Observation end date	2000-09-24T07:12:55	2000-09-24T07:12:54			
Read mode	TIMED	TIMED			

2.3 Star Slots

2.4 FID Slots

A Summary

A.1 Status

V&V Scientist	Jen Lauer
V&V Date (YYYY-MM-DD)	2007.06.08
V&V Edition	1
V&V Disposition and Status	OK
V&V Charge Time	5.31671868

A.2 Comments