

# V&V Reference Report

## L2 ASCDS Version : 7.6.10

Observation 61907 - L2 Version <sub>e</sub>1  
Chandra X-Ray Center

L2 Processing Date : Jun 8 2007

## Contents

<b>1</b>	<b>Front</b>	<b>2</b>
<b>2</b>	<b>OBI Primary</b>	<b>3</b>
2.1	OBI . . . . .	3
2.1.1	Images . . . . .	3
2.1.2	Bias . . . . .	3
2.1.3	Parameters . . . . .	4
2.1.4	Events . . . . .	4
2.2	Compared Parameters . . . . .	5
2.3	Star Slots . . . . .	6
2.4	FID Slots . . . . .	6
<b>3</b>	<b>OBI Secondary</b>	<b>6</b>
3.1	OBI . . . . .	6
3.1.1	Images . . . . .	6
3.1.2	Bias . . . . .	6
3.1.3	Parameters . . . . .	7
3.1.4	Events . . . . .	7
<b>A</b>	<b>Summary</b>	<b>8</b>
A.1	Status . . . . .	8
A.2	Comments . . . . .	8

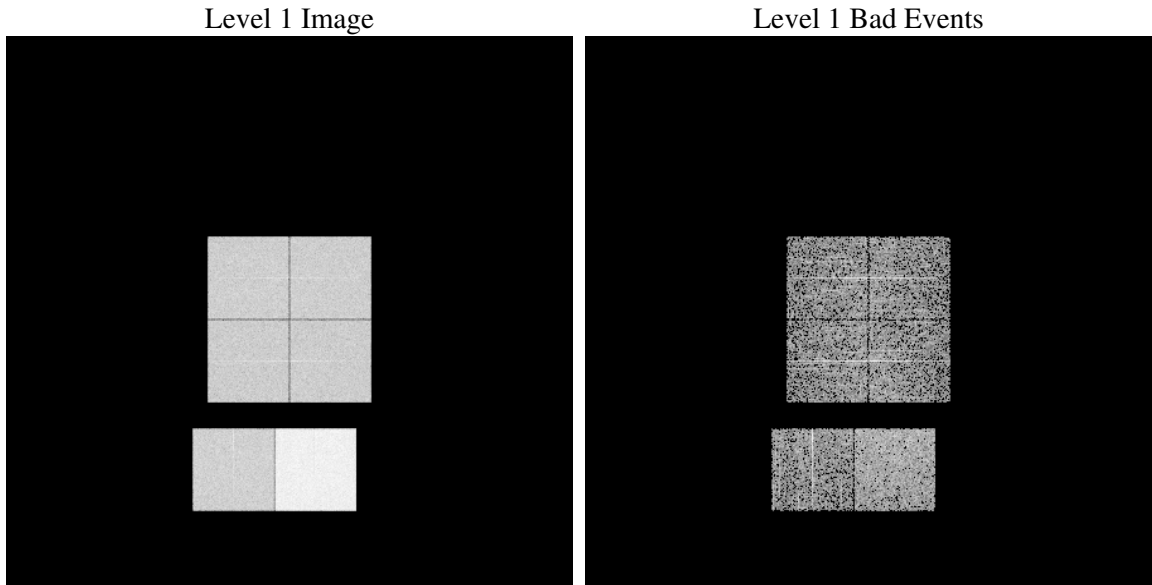
# 1 Front

seq_num	&#160
obs_id	61907
title	ACIS-012367 diagnostics
observer	CHANDRA engineering request/realtime commanding
object	&#160
dtcycle	0
cycle	P
ra_targ	0.0
dec_targ	0.0
ra_nom	330.44977593035
dec_nom	-44.374715525299
roll_nom	318.22863653866
revision	3
ontime	3531.3204573542
livetime	3495.4570678382
ontime0	1479.6493872851
ontime1	1451.3210672587
ontime2	1382.5823471993
ontime3	1390.6233872175
ontime6	1487.5262672901
ontime7	3531.3204573542
l2events	801817

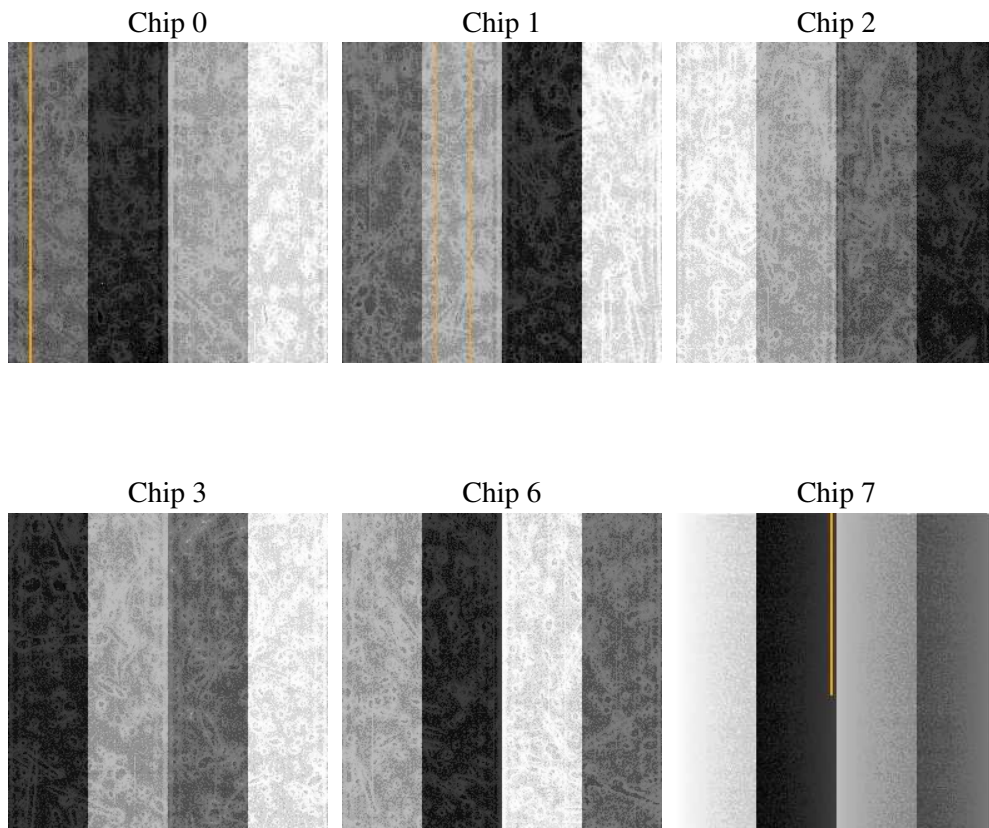
## 2 OBI Primary

### 2.1 OBI

#### 2.1.1 Images



#### 2.1.2 Bias



### 2.1.3 Parameters

obi_num	1
ascdsver	7.6.10
caldbver	3.4.0
date	2007-06-08T15:59:32
revision	3

sched_exp_time	0.0
ontime	3531.3204573542
ontime0	1479.6493872851
ontime1	1451.3210672587
ontime2	1382.5823471993
ontime3	1390.6233872175
ontime6	1487.5262672901
ontime7	3531.3204573542
l1events	907345

### 2.1.4 Events

	ccd 0	ccd 1	ccd 2	ccd 3	ccd 6	ccd 7
level 1 events	123037	121340	117921	118061	131136	295850
rejected events	10861	10796	11407	11365	11506	16674
rejected %	8%	8%	9%	9%	8%	5%

	ccd 0	ccd 1	ccd 2	ccd 3	ccd 6	ccd 7
grade 0 events	62103	61129	59108	59685	65350	72957
	50%	50%	50%	50%	49%	24%
grade 1 events	363	357	378	364	338	237
	0%	0%	0%	0%	0%	0%
grade 2 events	19553	19414	18918	18656	20650	62479
	15%	15%	16%	15%	15%	21%
grade 3 events	7036	7029	6816	6780	7369	28533
	5%	5%	5%	5%	5%	9%
grade 4 events	7403	6993	6785	6780	7380	28787
	6%	5%	5%	5%	5%	9%
grade 5 events	901	886	860	952	1012	3851
	0%	0%	0%	0%	0%	1%
grade 6 events	16407	16281	15193	15100	19226	86759
	13%	13%	12%	12%	14%	29%
grade 7 events	9271	9251	9863	9744	9811	12247
	7%	7%	8%	8%	7%	4%

## 2.2 Compared Parameters

Parameter	Planned	Actual	Parameter	Planned	Actual
Instrument	ACIS	ACIS	Obspar format version number	6	6
Detector	ACIS-012367	ACIS-012367	Obspar file type	PREDICTED	ACTUAL
Grating	NONE	NONE	Obspar update status	NONE	UPDATED
Data mode	FAINT	FAINT	On-chip summing requested	N	N
Observation mode	SECONDARY	SECONDARY	Subarray requested	NONE	NONE
Pointing RA	0	330.4497759303549	Alternating exposures requested	Y	Y
Pointing Dec	0	-44.37471552529856	Primary exposure time	4	4
Pointing Roll	0.0	318.2286365386627	Secondary exposure time	3.2	3.2
SIM focus pos (mm)	-0.782348	-1.428180813131781	Duty cycle	1	1
SIM defocus (mm)	0	0.1051558262725154			
SIM translation stage pos (mm)	-233.592463	250.466033080201			
SIM translation stage offset (mm)	0	-0.01005468664627074			
Observation start time	86346498.289995	86346497.521529			
Observation start date	2000-09-26T09:08:18	2000-09-26T09:08:17			
Observation end time	86365339.84070501	86365339.072239			
Observation end date	2000-09-26T14:22:20	2000-09-26T14:22:19			
Read mode	TIMED	TIMED			

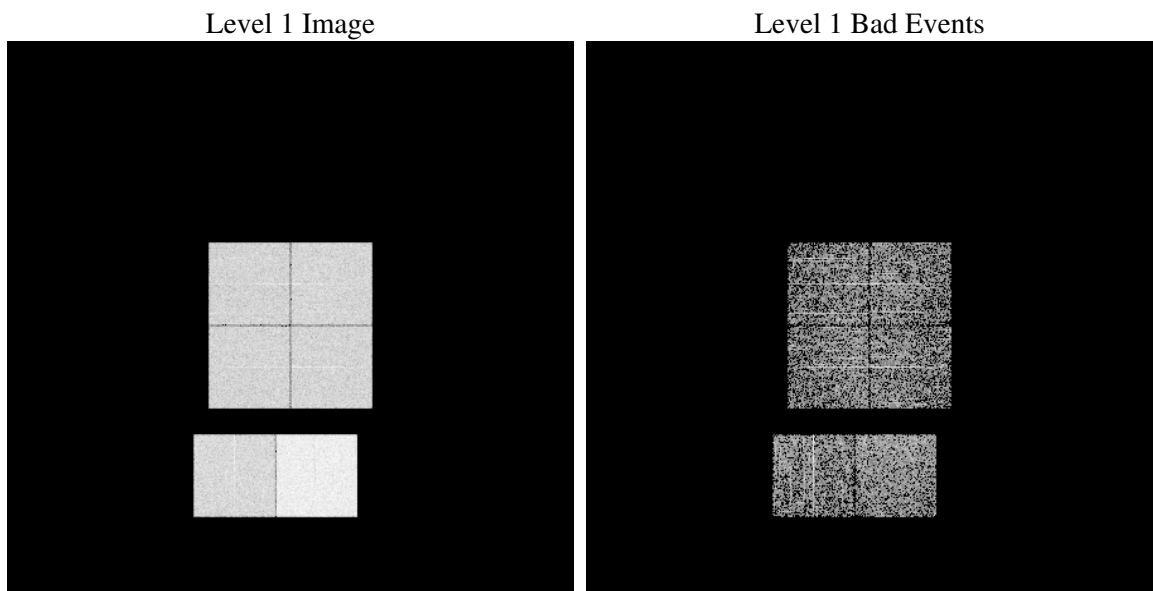
## 2.3 Star Slots

## 2.4 FID Slots

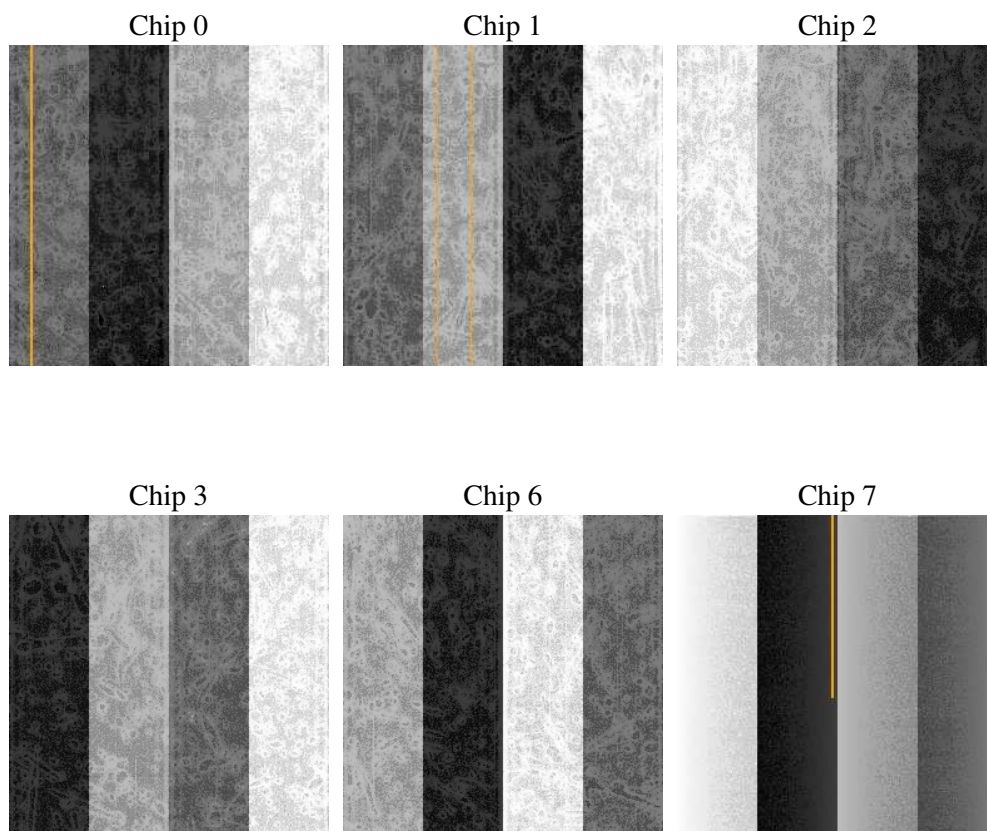
# 3 OBI Secondary

## 3.1 OBI

### 3.1.1 Images



### 3.1.2 Bias



### 3.1.3 Parameters

obi_num	1
ascdsver	7.6.10
caldsver	3.4.0
date	2007-06-08T15:57:35
revision	3

sched_exp_time	0.0
ontime	1704.2385299206
ontime0	861.56813216209
ontime1	903.70165205002
ontime2	872.34541365504
ontime3	868.05021214485
ontime6	936.11205196381
ontime7	1704.2385299206
llevents	525950

### 3.1.4 Events

	<b>ccd 0</b>	<b>ccd 1</b>	<b>ccd 2</b>	<b>ccd 3</b>	<b>ccd 6</b>	<b>ccd 7</b>
level 1 events	73073	76568	74084	75332	83786	143107
rejected events	7105	7239	7263	7469	7979	8622
rejected %	9%	9%	9%	9%	9%	6%

	<b>ccd 0</b>	<b>ccd 1</b>	<b>ccd 2</b>	<b>ccd 3</b>	<b>ccd 6</b>	<b>ccd 7</b>
grade 0 events	36523	38582	37492	38399	41521	35095
	49%	50%	50%	50%	49%	24%
grade 1 events	188	212	199	223	211	83
	0%	0%	0%	0%	0%	0%
grade 2 events	11704	12280	11662	11900	12936	30042
	16%	16%	15%	15%	15%	20%
grade 3 events	4287	4314	4166	4254	4773	13787
	5%	5%	5%	5%	5%	9%
grade 4 events	4250	4376	4212	4325	4711	13555
	5%	5%	5%	5%	5%	9%
grade 5 events	501	553	544	508	601	1889
	0%	0%	0%	0%	0%	1%
grade 6 events	9442	10030	9552	9230	12130	42274
	12%	13%	12%	12%	14%	29%
grade 7 events	6178	6221	6257	6493	6903	6382
	8%	8%	8%	8%	8%	4%



## A Summary

### A.1 Status

V&V Scientist	Jen Lauer
V&V Date (YYYY-MM-DD)	2007.06.08
V&V Edition	1
V&V Disposition and Status	OK
V&V Charge Time	5.23555898

### A.2 Comments