

V&V Reference Report

L2 ASCDS Version : 7.6.10

Observation 61889 - L2 Version 001
Chandra X-Ray Center

L2 Processing Date : Jun 9 2007

Contents

1	Front	2
2	OBI	3
2.1	OBI	3
2.1.1	Images	3
2.1.2	Bias	3
2.1.3	Parameters	4
2.1.4	Events	4
2.2	Compared Parameters	5
2.3	Star Slots	6
2.4	FID Slots	6
A	Summary	7
A.1	Status	7
A.2	Comments	7

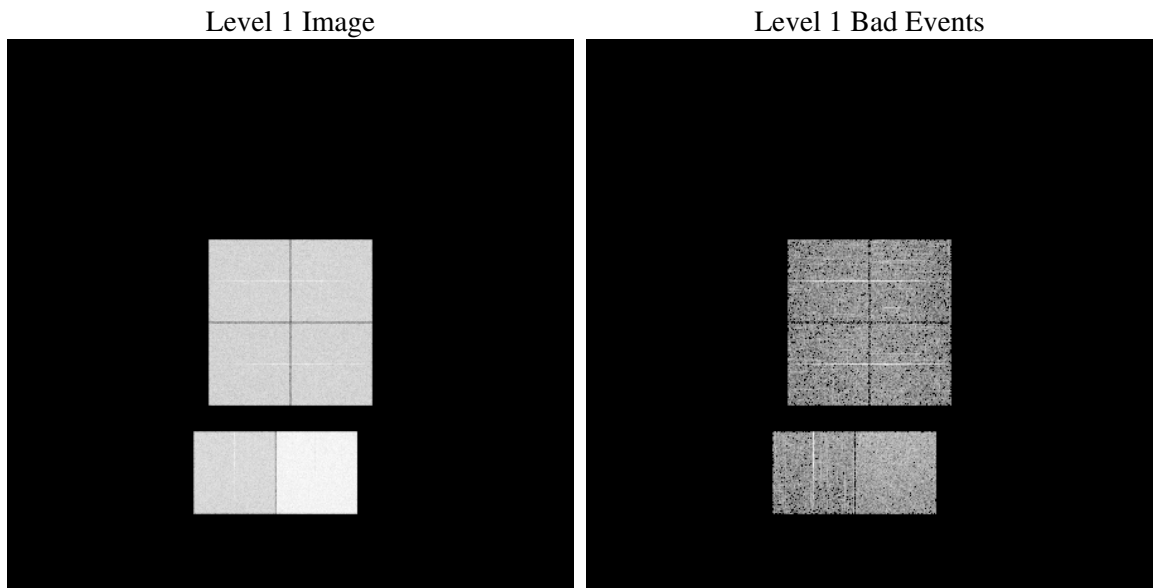
1 Front

seq_num	
obs_id	61889
title	ACIS-012367 diagnostics
observer	CHANDRA engineering request/realtime commanding
object	
dtcycle	0
cycle	P
ra_targ	0.0
dec_targ	0.0
ra_nom	158.51294502179
dec_nom	50.777519144037
roll_nom	40.876797820173
revision	2
ontime	5414.045362249
livetime	5345.4894599255
ontime0	2315.6947425753
ontime1	2364.3511032909
ontime2	2208.8224729002
ontime3	2270.2380927503
ontime6	2503.7979129553
ontime7	5414.045362249
l2events	1258868

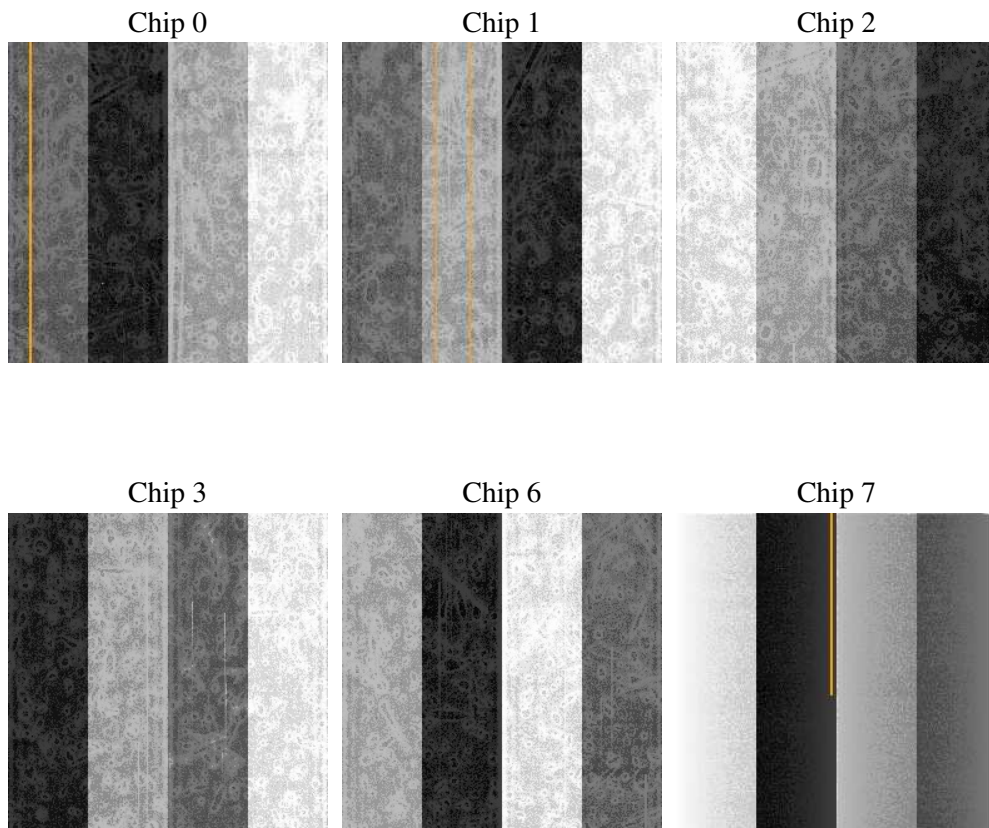
2 OBI

2.1 OBI

2.1.1 Images



2.1.2 Bias



2.1.3 Parameters

obi_num	0
ascdsver	7.6.10
caldsver	3.4.0
date	2007-06-10T00:41:30
revision	2

sched_exp_time	0.0
ontime	5414.045362249
ontime0	2315.6947425753
ontime1	2364.3511032909
ontime2	2208.8224729002
ontime3	2270.2380927503
ontime6	2503.7979129553
ontime7	5414.045362249
l1events	1429842

2.1.4 Events

	ccd 0	ccd 1	ccd 2	ccd 3	ccd 6	ccd 7
level 1 events	191031	195957	186527	191034	217864	447429
rejected events	17713	18015	17814	18485	19595	27025
rejected %	9%	9%	9%	9%	8%	6%

	ccd 0	ccd 1	ccd 2	ccd 3	ccd 6	ccd 7
grade 0 events	95283	98189	94127	96654	108419	108992
	49%	50%	50%	50%	49%	24%
grade 1 events	490	480	492	537	480	296
	0%	0%	0%	0%	0%	0%
grade 2 events	30832	31223	29306	30217	34326	93681
	16%	15%	15%	15%	15%	20%
grade 3 events	11113	11509	10593	11021	12146	43150
	5%	5%	5%	5%	5%	9%
grade 4 events	10976	11294	10622	10931	12236	42960
	5%	5%	5%	5%	5%	9%
grade 5 events	1329	1446	1326	1315	1503	5949
	0%	0%	0%	0%	0%	1%
grade 6 events	25347	25727	24065	23945	31142	131870
	13%	13%	12%	12%	14%	29%
grade 7 events	15661	16089	15996	16414	17612	20531
	8%	8%	8%	8%	8%	4%

2.2 Compared Parameters

Parameter	Planned	Actual	Parameter	Planned	Actual
Instrument	ACIS	ACIS	Obspar format version number	6	6
Detector	ACIS-012367	ACIS-012367	Obspar file type	PREDICTED	ACTUAL
Grating	NONE	NONE	Obspar update status	NONE	UPDATED
Data mode	FAINT	FAINT	On-chip summing requested	N	N
Observation mode	SECONDARY	SECONDARY	Subarray requested	NONE	NONE
Pointing RA	0	158.5129450217926	Alternating exposures requested	N	N
Pointing Dec	0	50.77751914403653	Primary exposure time	3.2	3.2
Pointing Roll	0.0	40.87679782017261			
SIM focus pos (mm)	-0.782348	-0.6828225247311905			
SIM defocus (mm)	0	0.8505141146731063			
SIM translation stage pos (mm)	-233.592463	250.466033080201			
SIM translation stage offset (mm)	0	-0.01005468664627074			
Observation start time	87488079.783068	87488079.01459999			
Observation start date	2000-10-09T14:14:40	2000-10-09T14:14:39			
Observation end time	87537109.634922	87537108.866448			
Observation end date	2000-10-10T03:51:50	2000-10-10T03:51:48			
Read mode	TIMED	TIMED			

2.3 Star Slots

2.4 FID Slots

A Summary

A.1 Status

V&V Scientist	Beth Sundheim
V&V Date (YYYY-MM-DD)	2007.06.10
V&V Edition	1
V&V Disposition and Status	OK
V&V Charge Time	5.41404536

A.2 Comments