

V&V Reference Report

L2 ASCDS Version : 7.6.10

Observation 61874 - L2 Version 001
Chandra X-Ray Center

L2 Processing Date : Jun 12 2007

Contents

1	Front	2
2	OBI	3
2.1	OBI	3
2.1.1	Images	3
2.1.2	Bias	3
2.1.3	Parameters	4
2.1.4	Events	4
2.2	Compared Parameters	5
2.3	Star Slots	6
2.4	FID Slots	6
A	Summary	7
A.1	Status	7
A.2	Comments	7

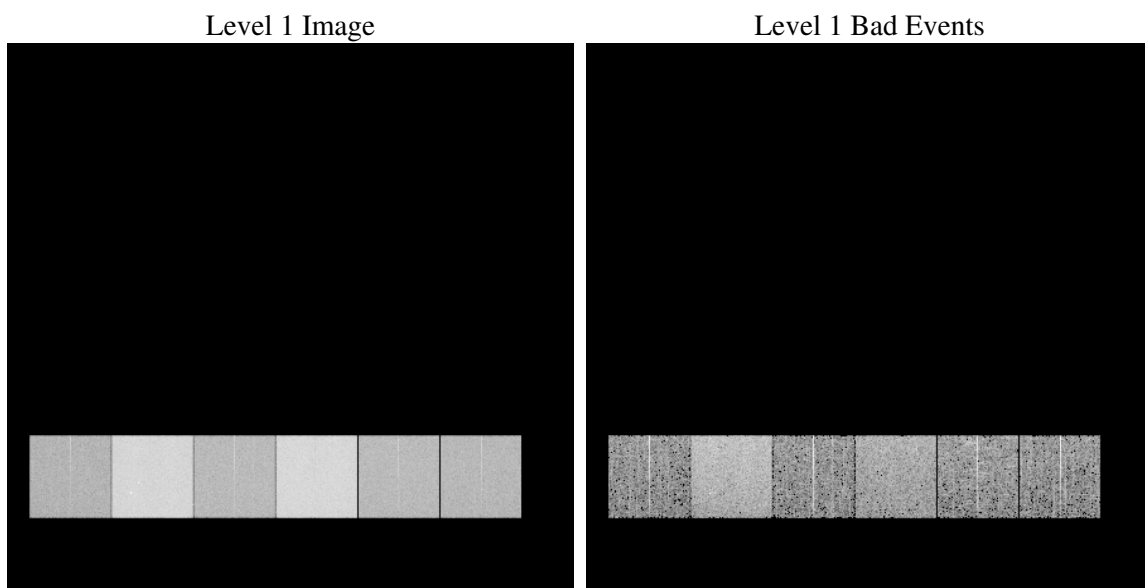
1 Front

seq_num	
obs_id	61874
title	ACIS-456789 diagnostics
observer	CHANDRA engineering request/realtime commanding
object	
dtcycle	0
cycle	P
ra_targ	0.0
dec_targ	0.0
ra_nom	162.70895437644
dec_nom	52.208187749912
roll_nom	46.417827621061
revision	3
ontime	5022.0995982289
livetime	4958.5067491708
ontime4	1986.9637854695
ontime5	5398.0523210168
ontime6	2197.5902651548
ontime7	5022.0995982289
ontime8	2204.1544749886
ontime9	2129.4053551704
l2events	1340807

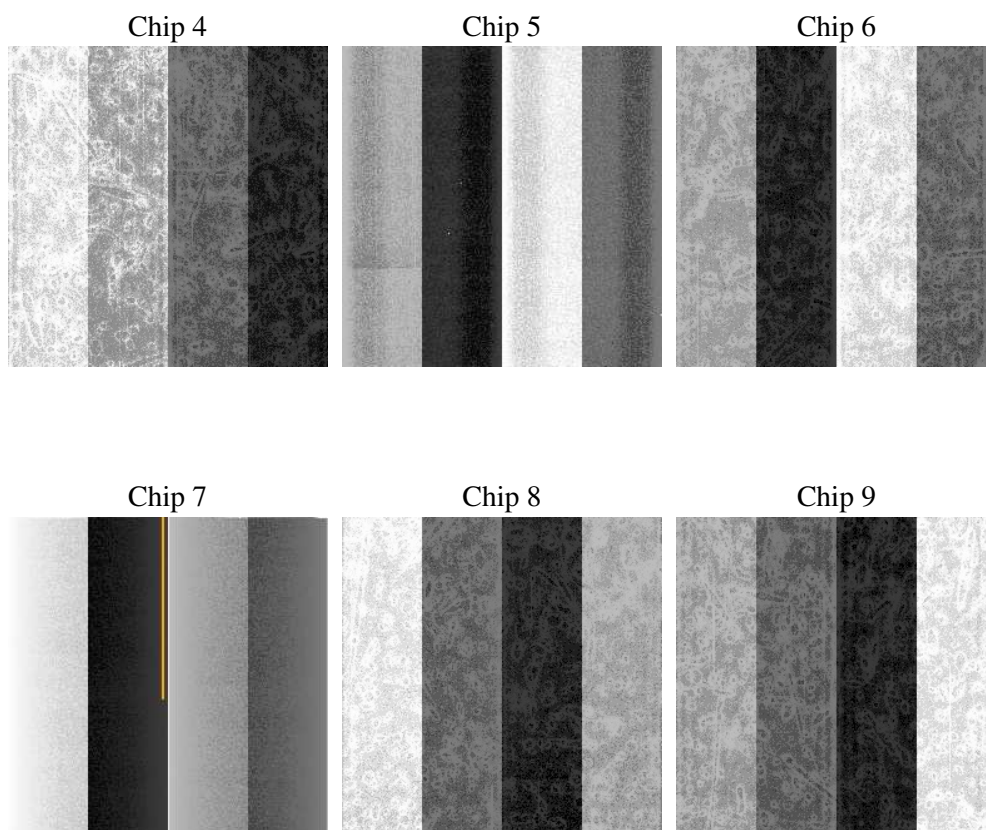
2 OBI

2.1 OBI

2.1.1 Images



2.1.2 Bias



2.1.3 Parameters

obi_num	0
ascdsver	7.6.10
caldbver	3.4.0
date	2007-06-12T20:30:03
revision	3

sched_exp_time	0.0
ontime	5022.0995982289
ontime4	1986.9637854695
ontime5	5398.0523210168
ontime6	2197.5902651548
ontime7	5022.0995982289
ontime8	2204.1544749886
ontime9	2129.4053551704
l1events	1552599

2.1.4 Events

	ccd 4	ccd 5	ccd 6	ccd 7	ccd 8	ccd 9
level 1 events	163607	403821	192766	417595	194307	180503
rejected events	19832	44915	20553	29687	22075	20126
rejected %	12%	11%	10%	7%	11%	11%

	ccd 4	ccd 5	ccd 6	ccd 7	ccd 8	ccd 9
grade 0 events	81768	87831	95019	100262	96523	89158
	49%	21%	49%	24%	49%	49%
grade 1 events	449	244	473	258	465	455
	0%	0%	0%	0%	0%	0%
grade 2 events	25945	130268	29859	85741	30821	28620
	15%	32%	15%	20%	15%	15%
grade 3 events	8901	22823	10564	40231	10745	9815
	5%	5%	5%	9%	5%	5%
grade 4 events	8958	23208	10691	39490	10780	9920
	5%	5%	5%	9%	5%	5%
grade 5 events	1282	8547	1500	5946	1563	1373
	0%	2%	0%	1%	0%	0%
grade 6 events	19471	97655	27699	125389	25278	24264
	11%	24%	14%	30%	13%	13%
grade 7 events	16833	33245	16961	20278	18132	16898
	10%	8%	8%	4%	9%	9%

2.2 Compared Parameters

Parameter	Planned	Actual	Parameter	Planned	Actual
Instrument	ACIS	ACIS	Obspar format version number	6	6
Detector	ACIS-456789	ACIS-456789	Obspar file type	PREDICTED	ACTUAL
Grating	NONE	NONE	Obspar update status	NONE	UPDATED
Data mode	FAINT	FAINT	On-chip summing requested	N	N
Observation mode	SECONDARY	SECONDARY	Subarray requested	NONE	NONE
Pointing RA	0	162.7089543764374	Alternating exposures requested	N	N
Pointing Dec	0	52.208187749912	Primary exposure time	0.000000	3.2
Pointing Roll	0.0	46.41782762106118			
SIM focus pos (mm)	-0.684267	-0.6828225247311905			
SIM defocus (mm)	0	0.8505141146731063			
SIM translation stage pos (mm)	-190.132523	250.466033080201			
SIM translation stage offset (mm)	0	-0.01005468664627074			
Observation start time	88678738.278	88678737.509588			
Observation start date	2000-10-23T08:58:58	2000-10-23T08:58:57			
Observation end time	88689248.62800001	88689247.85998499			
Observation end date	2000-10-23T11:54:09	2000-10-23T11:54:07			
Read mode	TIMED	TIMED			

2.3 Star Slots

2.4 FID Slots

A Summary

A.1 Status

V&V Scientist	Jen Lauer
V&V Date (YYYY-MM-DD)	2007.06.13
V&V Edition	1
V&V Disposition and Status	OK
V&V Charge Time	5.02209959

A.2 Comments

Focal plane temperature is warmer than -118.7 C degrees during the first 5 ksec of this observation. The ACIS spectral response calibration for the front-illuminated chips is less accurate at these warmer temperatures than it is at -119.7 C. The back-illuminated chips are not affected at the focal plane temperatures recorded for this observation. Users whose science objectives depend on the most accurate spectral response (i.e.: fitting line-rich spectra) may notice an effect. Users whose science objectives do not depend on the most accurate spectral response should not notice an effect.