

# V&V Reference Report

## L2 ASCDS Version : 7.6.10

Observation 61862 - L2 Version 001  
Chandra X-Ray Center

L2 Processing Date : Jun 14 2007

## Contents

<b>1</b>	<b>Front</b>	<b>2</b>
<b>2</b>	<b>OBI</b>	<b>3</b>
2.1	OBI . . . . .	3
2.1.1	Images . . . . .	3
2.1.2	Bias . . . . .	3
2.1.3	Parameters . . . . .	4
2.1.4	Events . . . . .	4
2.2	Compared Parameters . . . . .	5
2.3	Star Slots . . . . .	6
2.4	FID Slots . . . . .	6
<b>A</b>	<b>Summary</b>	<b>7</b>
A.1	Status . . . . .	7
A.2	Comments . . . . .	7

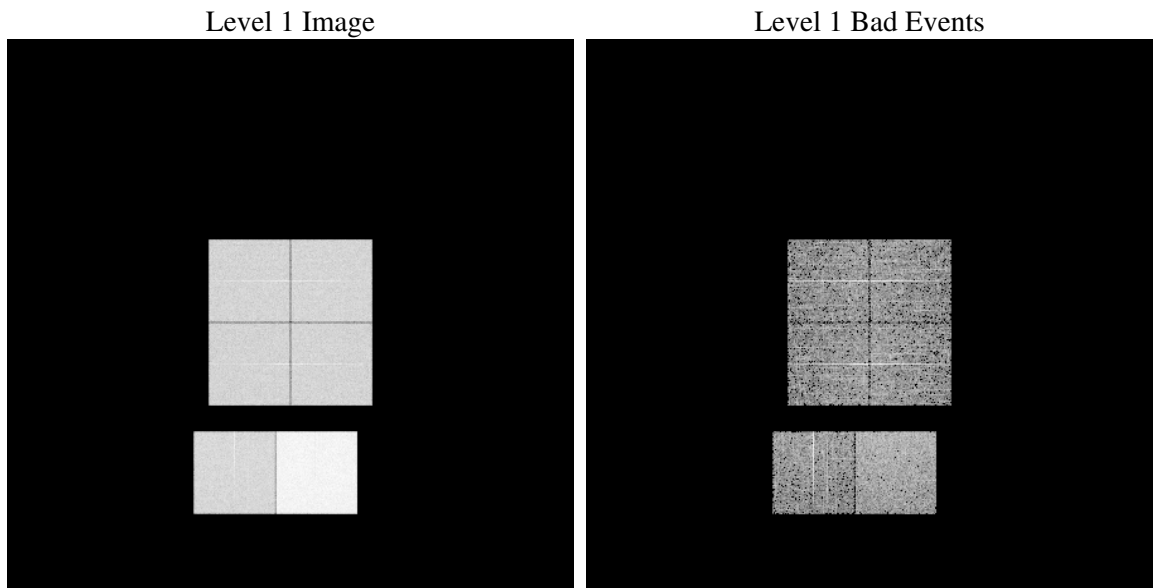
# 1 Front

seq_num	&#160
obs_id	61862
title	ACIS-012367 diagnostics
observer	CHANDRA engineering request/realtime commanding
object	&#160
dtcycle	0
cycle	P
ra_targ	0.0
dec_targ	0.0
ra_nom	176.35322414747
dec_nom	56.517787134099
roll_nom	42.751671858002
revision	2
ontime	5493.2564637065
livetime	5423.6975427211
ontime0	2352.731830582
ontime1	2417.552839756
ontime2	2285.8096841127
ontime3	2317.0807396322
ontime6	2492.0964405388
ontime7	5493.2564637065
l2events	1256667

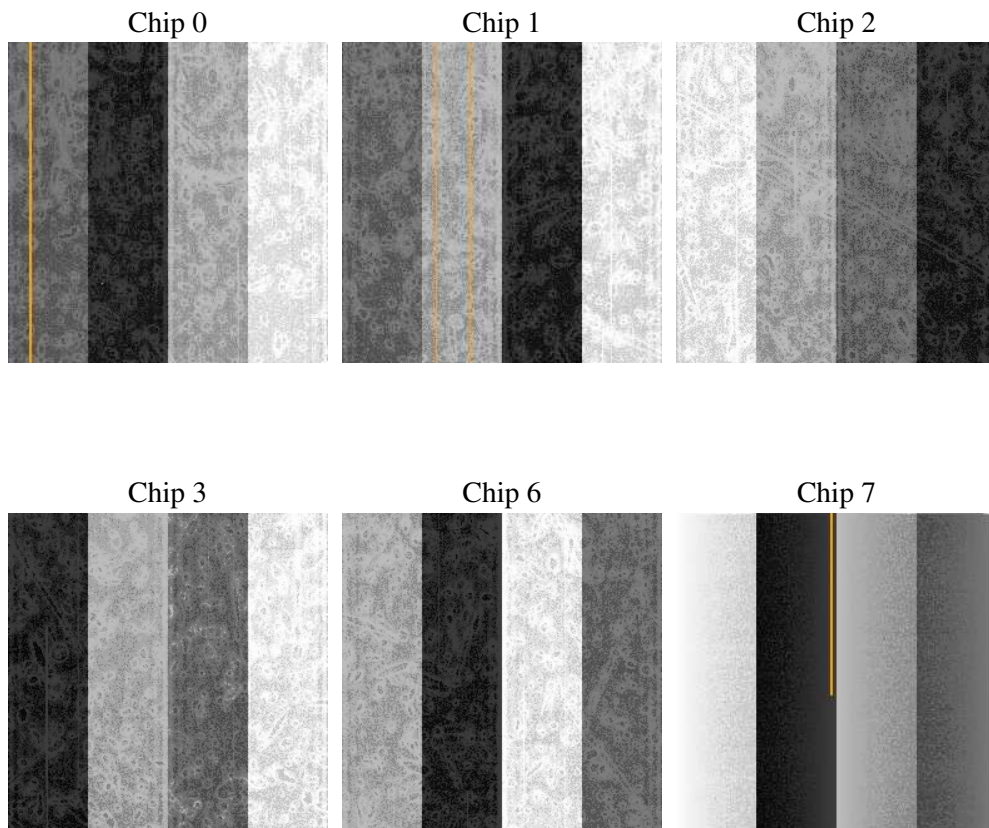
## 2 OBI

### 2.1 OBI

#### 2.1.1 Images



#### 2.1.2 Bias



### 2.1.3 Parameters

obi_num	0
ascdsver	7.6.10
caldsver	3.4.0
date	2007-06-14T17:43:33
revision	2

sched_exp_time	0.0
ontime	5493.2564637065
ontime0	2352.731830582
ontime1	2417.552839756
ontime2	2285.8096841127
ontime3	2317.0807396322
ontime6	2492.0964405388
ontime7	5493.2564637065
l1events	1429944

### 2.1.4 Events

	ccd 0	ccd 1	ccd 2	ccd 3	ccd 6	ccd 7
level 1 events	192299	197106	189413	192849	212280	445997
rejected events	18301	18225	18443	19395	19112	27091
rejected %	9%	9%	9%	10%	9%	6%

	ccd 0	ccd 1	ccd 2	ccd 3	ccd 6	ccd 7
grade 0 events	95945	99161	95457	97305	105266	108489
	49%	50%	50%	50%	49%	24%
grade 1 events	510	487	484	487	535	313
	0%	0%	0%	0%	0%	0%
grade 2 events	31012	31689	30164	30429	33806	93213
	16%	16%	15%	15%	15%	20%
grade 3 events	11072	11341	10741	11162	11851	42822
	5%	5%	5%	5%	5%	9%
grade 4 events	11007	11212	10767	10995	11997	42774
	5%	5%	5%	5%	5%	9%
grade 5 events	1374	1329	1342	1431	1482	6066
	0%	0%	0%	0%	0%	1%
grade 6 events	25194	25740	24086	23793	30495	131854
	13%	13%	12%	12%	14%	29%
grade 7 events	16185	16147	16372	17247	16848	20466
	8%	8%	8%	8%	7%	4%

## 2.2 Compared Parameters

Parameter	Planned	Actual	Parameter	Planned	Actual
Instrument	ACIS	ACIS	Obspar format version number	6	6
Detector	ACIS-012367	ACIS-012367	Obspar file type	PREDICTED	ACTUAL
Grating	NONE	NONE	Obspar update status	NONE	UPDATED
Data mode	FAINT	FAINT	On-chip summing requested	N	N
Observation mode	SECONDARY	SECONDARY	Subarray requested	NONE	NONE
Pointing RA	0	176.3532241474701	Alternating exposures requested	N	N
Pointing Dec	0	56.51778713409865	Primary exposure time	0.000000	3.2
Pointing Roll	0.0	42.75167185800173			
SIM focus pos (mm)	-0.782348	-0.7809083437167272			
SIM defocus (mm)	0	0.7524282956875696			
SIM translation stage pos (mm)	-233.592463	250.466033080201			
SIM translation stage offset (mm)	0	-0.01005468664627074			
Observation start time	89773467.01899999	89773466.250936			
Observation start date	2000-11-05T01:04:27	2000-11-05T01:04:26			
Observation end time	89817125.87100001	89817125.102577			
Observation end date	2000-11-05T13:12:06	2000-11-05T13:12:05			
Read mode	TIMED	TIMED			

## **2.3 Star Slots**

## **2.4 FID Slots**

## A Summary

### A.1 Status

V&V Scientist	Jen Lauer
V&V Date (YYYY-MM-DD)	2007.06.14
V&V Edition	1
V&V Disposition and Status	OK
V&V Charge Time	5.49325646

### A.2 Comments