

# V&V Reference Report

## L2 ASCDS Version : 7.6.10

Observation 61861 - L2 Version 001  
Chandra X-Ray Center

L2 Processing Date : Jun 14 2007

## Contents

<b>1</b>	<b>Front</b>	<b>2</b>
<b>2</b>	<b>OBI</b>	<b>3</b>
2.1	OBI . . . . .	3
2.1.1	Images . . . . .	3
2.1.2	Bias . . . . .	3
2.1.3	Parameters . . . . .	4
2.1.4	Events . . . . .	4
2.2	Compared Parameters . . . . .	5
2.3	Star Slots . . . . .	6
2.4	FID Slots . . . . .	6
<b>A</b>	<b>Summary</b>	<b>7</b>
A.1	Status . . . . .	7
A.2	Comments . . . . .	7

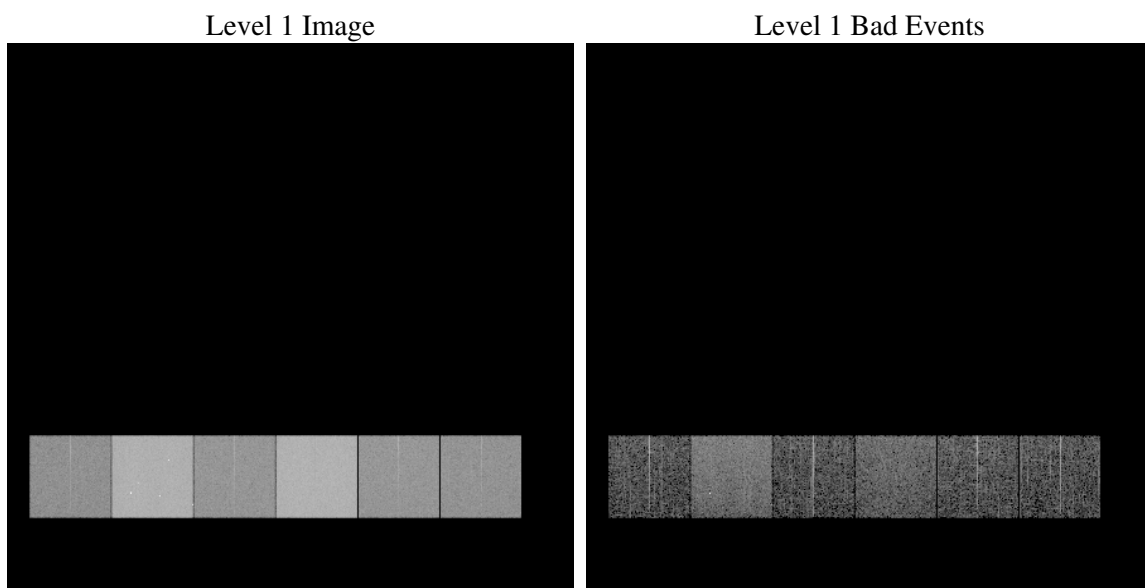
# 1 Front

seq_num	&#160
obs_id	61861
title	ACIS-456789 diagnostics
observer	CHANDRA engineering request/realtime commanding
object	&#160
dtcycle	0
cycle	P
ra_targ	0.0
dec_targ	0.0
ra_nom	176.35086233675
dec_nom	59.518234696411
roll_nom	46.367399879634
revision	2
ontime	5087.6968832761
livetime	5023.2734018968
ontime4	2096.3659225702
ontime5	5457.2078887671
ontime6	2281.0641919971
ontime7	5087.6968832761
ontime8	2313.5565323532
ontime9	2190.1918426007
l2events	1355832

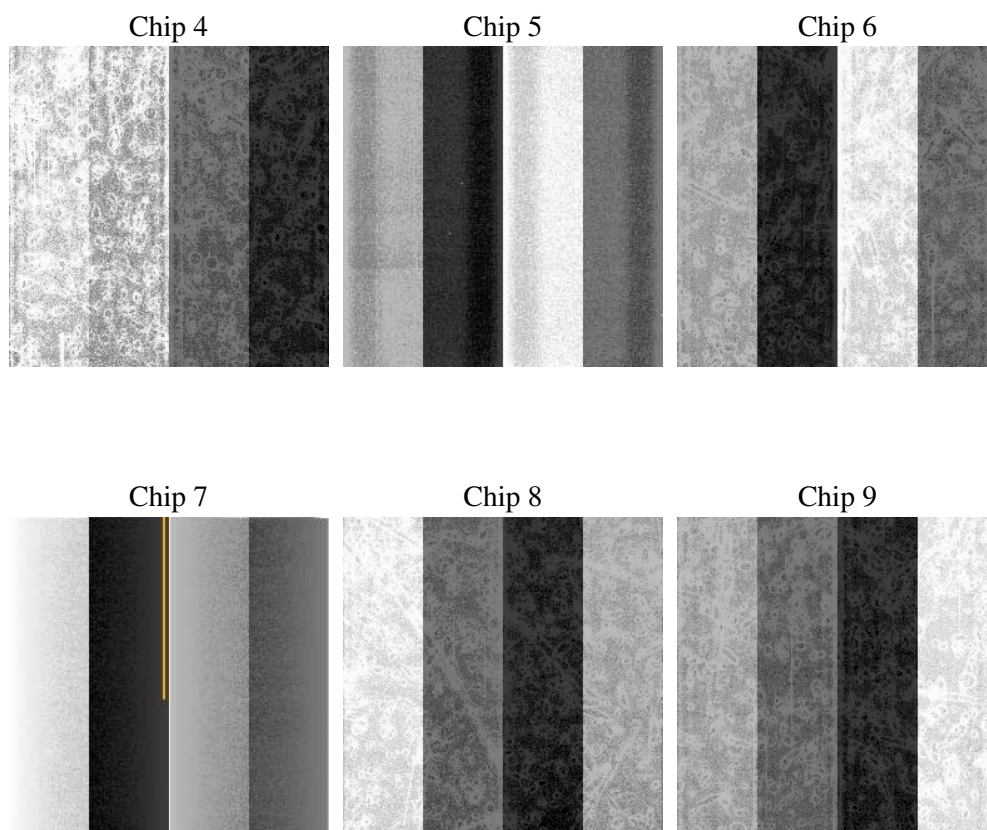
## 2 OBI

### 2.1 OBI

#### 2.1.1 Images



#### 2.1.2 Bias



### 2.1.3 Parameters

obi_num	0
ascdsver	7.6.10
caldsver	3.4.0
date	2007-06-14T17:46:46
revision	2

sched_exp_time	0.0
ontime	5087.6968832761
ontime4	2096.3659225702
ontime5	5457.2078887671
ontime6	2281.0641919971
ontime7	5087.6968832761
ontime8	2313.5565323532
ontime9	2190.1918426007
l1events	1554718

### 2.1.4 Events

	ccd 4	ccd 5	ccd 6	ccd 7	ccd 8	ccd 9
level 1 events	168135	398576	195608	411932	199472	180995
rejected events	18326	40185	18495	25807	19933	18100
rejected %	10%	10%	9%	6%	9%	10%

	ccd 4	ccd 5	ccd 6	ccd 7	ccd 8	ccd 9
grade 0 events	84653	87238	96992	99038	99248	89257
	50%	21%	49%	24%	49%	49%
grade 1 events	461	288	448	253	528	519
	0%	0%	0%	0%	0%	0%
grade 2 events	26423	129604	30615	85007	31710	28766
	15%	32%	15%	20%	15%	15%
grade 3 events	9172	22937	10910	39972	11311	10007
	5%	5%	5%	9%	5%	5%
grade 4 events	9243	22739	10801	38969	11157	10002
	5%	5%	5%	9%	5%	5%
grade 5 events	1318	8232	1446	5805	1498	1443
	0%	2%	0%	1%	0%	0%
grade 6 events	20318	95873	27795	123139	26113	24863
	12%	24%	14%	29%	13%	13%
grade 7 events	16547	31665	16601	19749	17907	16138
	9%	7%	8%	4%	8%	8%

## 2.2 Compared Parameters

Parameter	Planned	Actual	Parameter	Planned	Actual
Instrument	ACIS	ACIS	Obspar format version number	6	6
Detector	ACIS-456789	ACIS-456789	Obspar file type	PREDICTED	ACTUAL
Grating	NONE	NONE	Obspar update status	NONE	UPDATED
Data mode	FAINT	FAINT	On-chip summing requested	N	N
Observation mode	SECONDARY	SECONDARY	Subarray requested	NONE	NONE
Pointing RA	0	176.3508623367491	Alternating exposures requested	N	N
Pointing Dec	0	59.51823469641133	Primary exposure time	0.000000	3.2
Pointing Roll	0.0	46.36739987963355			
SIM focus pos (mm)	-0.684267	-0.7809083437167272			
SIM defocus (mm)	0	0.7524282956875696			
SIM translation stage pos (mm)	-190.132523	250.466033080201			
SIM translation stage offset (mm)	0	-0.01005468664627074			
Observation start time	89817125.87100001	89817125.102577			
Observation start date	2000-11-05T13:12:06	2000-11-05T13:12:05			
Observation end time	89827847.37100001	89827846.602982			
Observation end date	2000-11-05T16:10:47	2000-11-05T16:10:46			
Read mode	TIMED	TIMED			

## **2.3 Star Slots**

## **2.4 FID Slots**

# A Summary

## A.1 Status

V&V Scientist	Jen Lauer
V&V Date (YYYY-MM-DD)	2007.06.14
V&V Edition	1
V&V Disposition and Status	OK
V&V Charge Time	5.08769688

## A.2 Comments

Focal plane temperature is warmer than -118.7 C degrees during the first 6.5 ksec of this observation. The ACIS spectral response calibration for the front-illuminated chips is less accurate at these warmer temperatures than it is at -119.7 C. The back-illuminated chips are not affected at the focal plane temperatures recorded for this observation. Users whose science objectives depend on the most accurate spectral response (i.e.: fitting line-rich spectra) may notice an effect. Users whose science objectives do not depend on the most accurate spectral response should not notice an effect.