

V&V Reference Report

L2 ASCDS Version : 8.4.5

Observation 61859 - L2 Version 3
Chandra X-Ray Center

L2 Processing Date : Sep 3 2012

Contents

1	Front	2
2	OBI	3
2.1	OBI	3
2.1.1	Images	3
2.1.2	Bias	3
2.1.3	Parameters	4
2.1.4	Events	4
2.2	Compared Parameters	5
2.3	Star Slots	6
2.4	FID Slots	6
A	Summary	7
A.1	Status	7
A.2	Comments	7

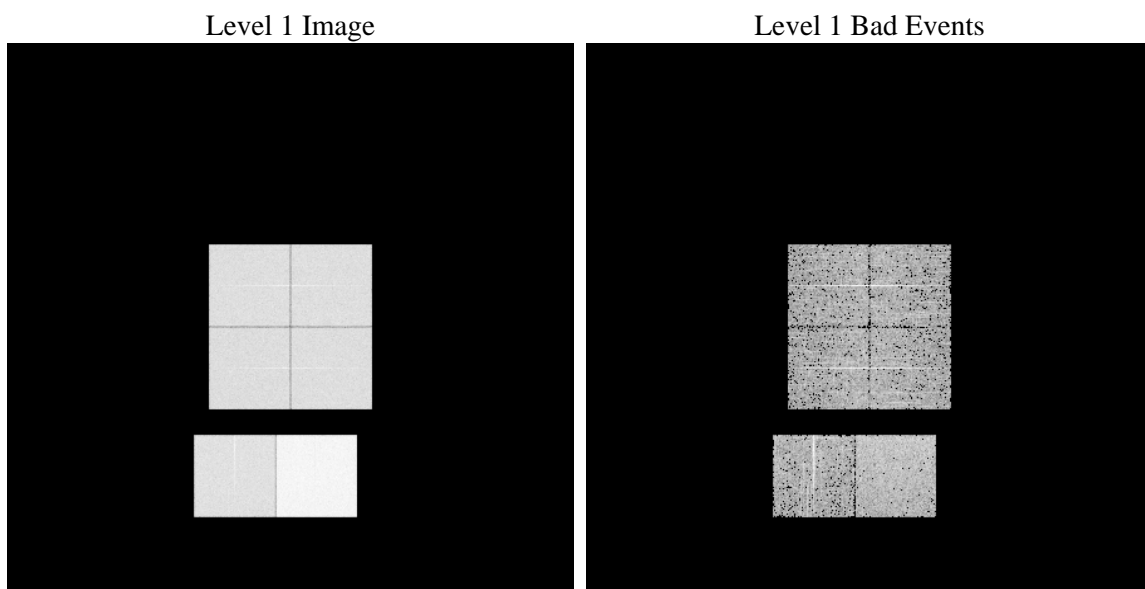
1 Front

seq_num	 	Sequence number
obs_id	61859	Observation id
title	ACIS-012367 diagnostics	Proposal title
observer	CHANDRA engineering request/realtime commanding	Principal investig
object	 	Source name
dtcycle	0	
cycle	P	events from which exps? Prim/Second/Both
ra_targ	0.0	Observer's specified target RA [deg]
dec_targ	0.0	Observer's specified target Dec [deg]
ra_nom	356.3953456272	Nominal RA [deg]
dec_nom	-59.495970456316	Nominal Dec [deg]
roll_nom	315.62127857228	Nominal Roll [deg]
revision	3	Processing version of data
ontime	5430.8430136442	Sum of GTIs [s]
livetime	5362.0744093444	Livetime [s]
ontime0	2440.5011599064	Sum of GTIs [s]
ontime1	2423.1155760884	Sum of GTIs [s]
ontime2	2291.4131608009	Sum of GTIs [s]
ontime3	2352.9930402339	Sum of GTIs [s]
ontime6	2518.2857508361	Sum of GTIs [s]
ontime7	5430.8430136442	Sum of GTIs [s]
l2events	1263125	Number of level 2 events

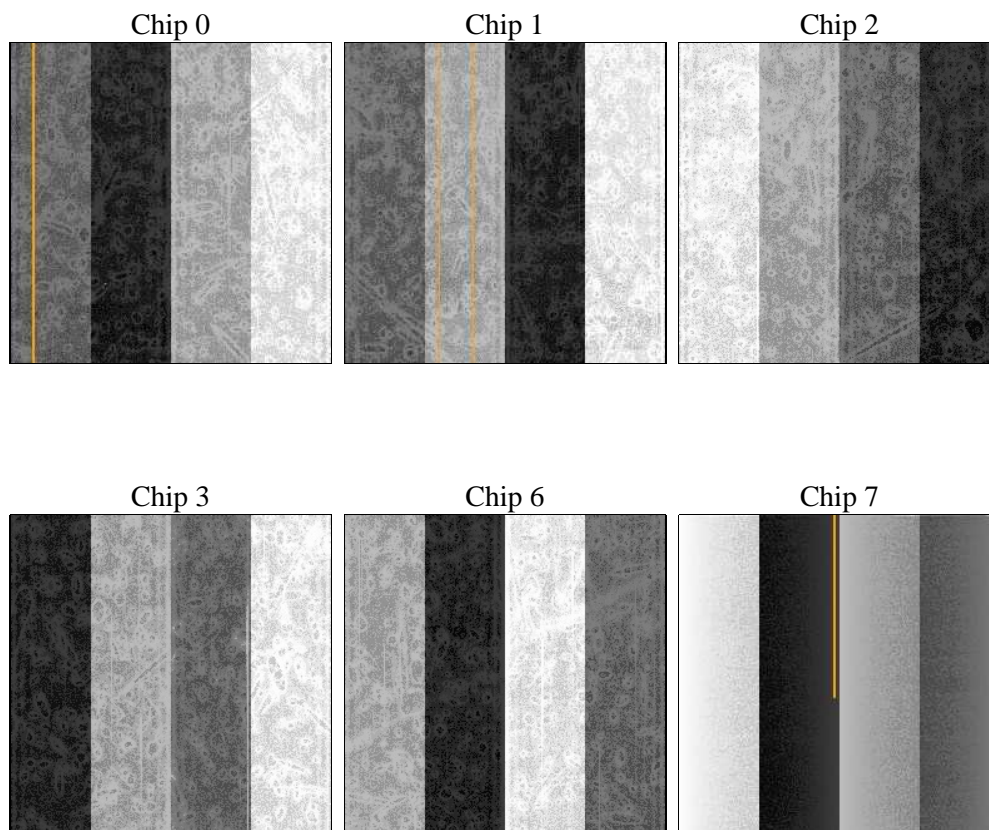
2 OBI

2.1 OBI

2.1.1 Images



2.1.2 Bias



2.1.3 Parameters

obi_num	0	Obi number	sched_exp_time	0.0	[s] Scheduled observation exposure time
ascdsver	8.4.5	Processing system revision	ontime	5430.8430136442	Sum of GTIs [s]
caldsver	4.5.1.1	 	ontime0	2440.5011599064	Sum of GTIs [s]
date	2012-09-03T08:15:01	Date and time of file creation	ontime1	2423.1155760884	Sum of GTIs [s]
revision	3	Processing version of data	ontime2	2291.4131608009	Sum of GTIs [s]
			ontime3	2352.9930402339	Sum of GTIs [s]
			ontime6	2518.2857508361	Sum of GTIs [s]
			ontime7	5430.8430136442	Sum of GTIs [s]
			l1events	1430793	Number of level 1 events

2.1.4 Events

	ccd 0	ccd 1	ccd 2	ccd 3	ccd 6	ccd 7		ccd 0	ccd 1	ccd 2	ccd 3	ccd 6	ccd 7
level 1 events	196822	196944	189663	194149	215155	438060	grade 0 events	98926	98877	96055	98904	107264	107073
rejected events	17169	17534	17570	17772	18988	25469		50%	50%	50%	50%	49%	24%
rejected %	8%	8%	9%	9%	8%	5%	grade 1 events	502	519	467	494	521	274
								0%	0%	0%	0%	0%	0%
							grade 2 events	32012	31479	29920	30950	33787	91939
								16%	15%	15%	15%	15%	20%
							grade 3 events	11294	11243	10866	11074	12052	42042
								5%	5%	5%	5%	5%	9%
							grade 4 events	11474	11514	10933	11056	12318	42187
								5%	5%	5%	5%	5%	9%
							grade 5 events	1385	1294	1291	1343	1529	5794
								0%	0%	0%	0%	0%	1%
							grade 6 events	25947	26297	24319	24393	30746	129350
								13%	13%	12%	12%	14%	29%
							grade 7 events	15282	15721	15812	15935	16938	19401
								7%	7%	8%	8%	7%	4%

2.2 Compared Parameters

Parameter	Planned	Actual
Instrument	ACIS	ACIS
Detector	ACIS-012367	ACIS-012367
Grating	NONE	NONE
Data mode	FAINT	FAINT
Observation mode	SECONDARY	SECONDARY
[deg] Pointing RA	0	356.3953456271977
[deg] Pointing Dec	0	-59.49597045631604
[deg] Pointing Roll	0.0	315.6212785722793
[mm] SIM focus pos	-0.782348	-0.6828225247311905
[mm] SIM defocus	0	0.8505141146731063
[mm] SIM translation stage pos	-233.592463	250.466033080201
[mm] SIM translation stage offset	0	-0.01005468664627074
[s] Observation start time (MET)	90001306.078005	90001305.309541
Observation start date	2000-11-07T16:21:46	2000-11-07T16:21:45
[s] Observation end time (MET)	90050096.07984699	90050095.311387
Observation end date	2000-11-08T05:54:56	2000-11-08T05:54:55
Read mode	TIMED	TIMED

Parameter	Planned	Actual
Obspar format version number	7	7
Obspar file type	PREDICTED	ACTUAL
Obspar update status	NONE	UPDATED
On-chip summing requested	N	N
Subarray requested	NONE	NONE
Alternating exposures requested	N	N
[s] Primary exposure time	3.2	3.2

2.3 Star Slots

2.4 FID Slots

A Summary

A.1 Status

V&V Scientist	Jen Lauer
V&V Date (YYYY-MM-DD)	2012.09.11
V&V Edition	1
V&V Disposition and Status	OK
V&V Charge Time	5.4308430136442

A.2 Comments