

V&V Reference Report

L2 ASCDS Version : 8.4.5

Observation 61833 - L2 Version 3
Chandra X-Ray Center

L2 Processing Date : Sep 4 2012

Contents

1	Front	2
2	OBI	3
2.1	OBI	3
2.1.1	Images	3
2.1.2	Bias	3
2.1.3	Parameters	4
2.1.4	Events	4
2.2	Compared Parameters	5
2.3	Star Slots	6
2.4	FID Slots	6
A	Summary	7
A.1	Status	7
A.2	Comments	7

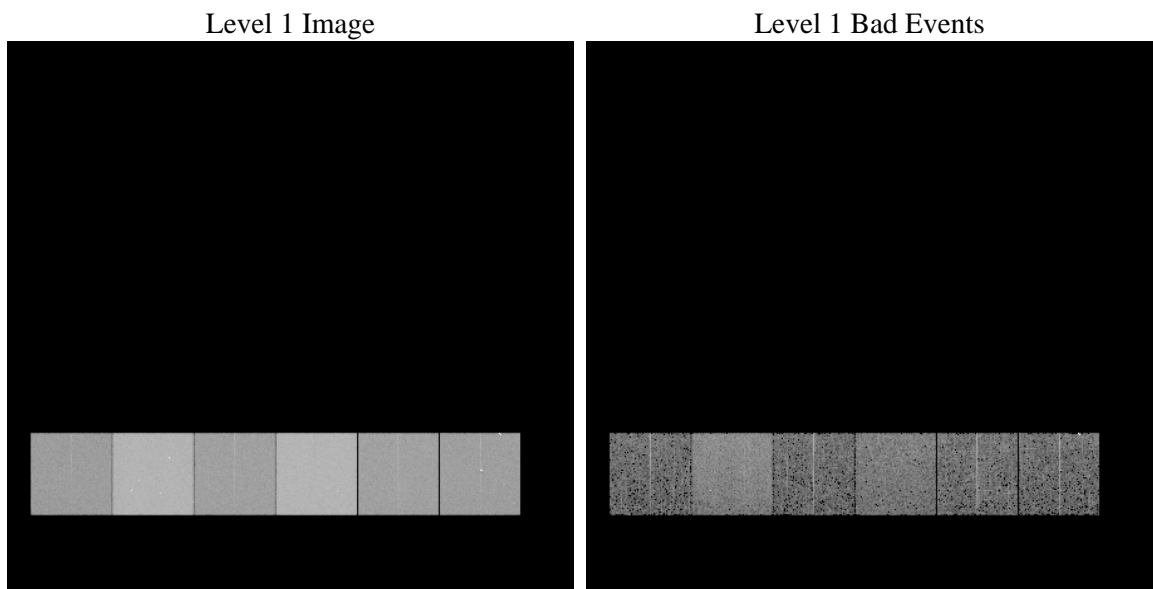
1 Front

seq_num	 	Sequence number
obs_id	61833	Observation id
title	ACIS-456789 diagnostics	Proposal title
observer	CHANDRA engineering request/realtime commanding	Principal investig
object	 	Source name
dtcycle	0	
cycle	P	events from which exps? Prim/Second/Both
ra_targ	0.0	Observer's specified target RA [deg]
dec_targ	0.0	Observer's specified target Dec [deg]
ra_nom	245.02656339907	Nominal RA [deg]
dec_nom	30.017166008312	Nominal Dec [deg]
roll_nom	4.2165053169506	Nominal Roll [deg]
revision	3	Processing version of data
ontime	5036.4028470218	Sum of GTIs [s]
livetime	4972.6288816151	Livetime [s]
ontime4	2167.9845989347	Sum of GTIs [s]
ontime5	5418.9820163101	Sum of GTIs [s]
ontime6	2333.3184292614	Sum of GTIs [s]
ontime7	5036.4028470218	Sum of GTIs [s]
ontime8	2381.8520388603	Sum of GTIs [s]
ontime9	2271.96714966	Sum of GTIs [s]
l2events	1352823	Number of level 2 events

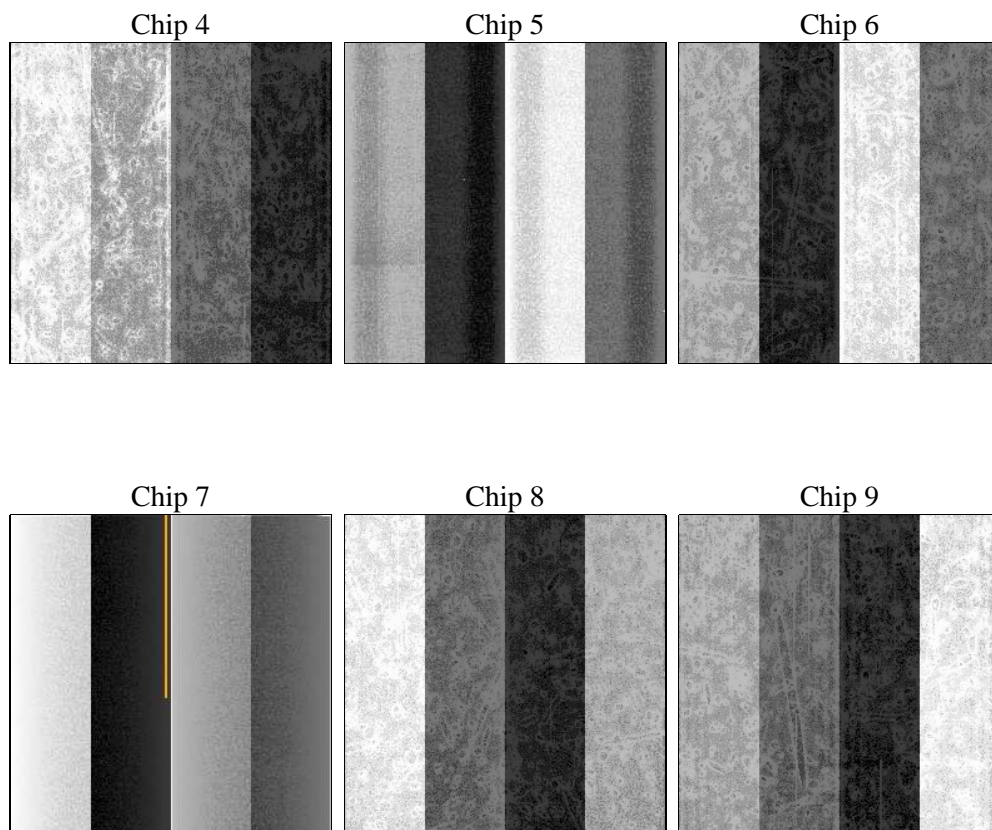
2 OBI

2.1 OBI

2.1.1 Images



2.1.2 Bias



2.1.3 Parameters

obi_num	1	Obi number	sched_exp_time	0.0	[s] Scheduled observation exposure time
ascdsver	8.4.5	Processing system revision	ontime	5036.4028470218	Sum of GTIs [s]
caldsver	4.5.1.1	 	ontime4	2167.9845989347	Sum of GTIs [s]
date	2012-09-04T08:31:45	Date and time of file creation	ontime5	5418.9820163101	Sum of GTIs [s]
revision	3	Processing version of data	ontime6	2333.3184292614	Sum of GTIs [s]
			ontime7	5036.4028470218	Sum of GTIs [s]
			ontime8	2381.8520388603	Sum of GTIs [s]
			ontime9	2271.96714966	Sum of GTIs [s]
			l1events	1556124	Number of level 1 events

2.1.4 Events

	ccd 4	ccd 5	ccd 6	ccd 7	ccd 8	ccd 9		ccd 4	ccd 5	ccd 6	ccd 7	ccd 8	ccd 9
level 1 events	172818	390484	197518	402966	203316	189022	grade 0 events	88114	90634	98989	98988	101304	93742
rejected events	17922	38159	17997	25328	20629	19147		50%	23%	50%	24%	49%	49%
rejected %	10%	9%	9%	6%	10%	10%	grade 1 events	468	257	481	277	494	1810
								0%	0%	0%	0%	0%	0%
							grade 2 events	27479	123789	31006	84055	32260	30771
								15%	31%	15%	20%	15%	16%
							grade 3 events	9433	23571	11076	38500	11496	10280
								5%	6%	5%	9%	5%	5%
							grade 4 events	9497	23310	11103	38290	11736	10339
								5%	5%	5%	9%	5%	5%
							grade 5 events	1203	7591	1518	5392	1572	1530
								0%	1%	0%	1%	0%	0%
							grade 6 events	21058	92760	28316	119548	26873	25481
								12%	23%	14%	29%	13%	13%
							grade 7 events	15566	28572	15029	17916	17581	15069
								9%	7%	7%	4%	8%	7%

2.2 Compared Parameters

Parameter	Planned	Actual
Instrument	ACIS	ACIS
Detector	ACIS-456789	ACIS-456789
Grating	NONE	NONE
Data mode	FAINT	FAINT
Observation mode	SECONDARY	SECONDARY
[deg] Pointing RA	0	245.026563399072
[deg] Pointing Dec	0	30.01716600831178
[deg] Pointing Roll	0.0	4.216505316950556
[mm] SIM focus pos	-0.684267	-0.6828225247311905
[mm] SIM defocus	0	0.8505141146731063
[mm] SIM translation stage pos	-190.132523	250.466033080201
[mm] SIM translation stage offset	0	-0.01005468664627074
[s] Observation start time (MET)	92105215.008231	92105214.239756
Observation start date	2000-12-02T00:46:55	2000-12-02T00:46:54
[s] Observation end time (MET)	92116721.65867101	92116720.890196
Observation end date	2000-12-02T03:58:42	2000-12-02T03:58:40
Read mode	TIMED	TIMED

Parameter	Planned	Actual
Obspar format version number	7	7
Obspar file type	PREDICTED	ACTUAL
Obspar update status	NONE	UPDATED
On-chip summing requested	N	N
Subarray requested	NONE	NONE
Alternating exposures requested	N	N
[s] Primary exposure time	3.2	3.2

2.3 Star Slots

2.4 FID Slots

A Summary

A.1 Status

V&V Scientist	Beth Sundheim
V&V Date (YYYY-MM-DD)	2012.09.12
V&V Edition	1
V&V Disposition and Status	OK
V&V Charge Time	5.0364028470218

A.2 Comments