

V&V Reference Report

L2 ASCDS Version : 7.6.10

Observation 61805 - L2 Version 001
Chandra X-Ray Center

L2 Processing Date : Jun 22 2007

Contents

1	Front	2
2	OBI	3
2.1	OBI	3
2.1.1	Images	3
2.1.2	Bias	3
2.1.3	Parameters	4
2.1.4	Events	4
2.2	Compared Parameters	5
2.3	Star Slots	6
2.4	FID Slots	6
A	Summary	7
A.1	Status	7
A.2	Comments	7

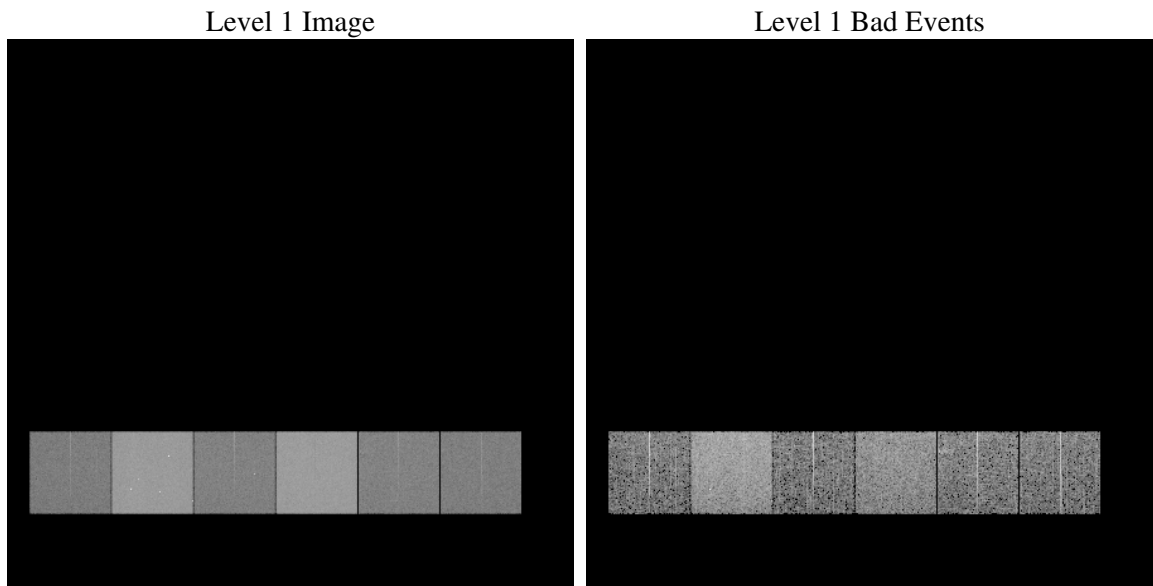
1 Front

seq_num	
obs_id	61805
title	ACIS-456789 diagnostics
observer	CHANDRA engineering request/realtime commanding
object	
dtcycle	0
cycle	P
ra_targ	0.0
dec_targ	0.0
ra_nom	92.628768779494
dec_nom	-30.585503747521
roll_nom	357.8129432412
revision	3
ontime	5121.7780064642
livetime	5056.9229693819
ontime4	2188.7861987054
ontime5	5504.2532128692
ontime6	2367.0022286624
ontime7	5121.7780064642
ontime8	2386.5306183547
ontime9	2256.6837887913
l2events	1337735

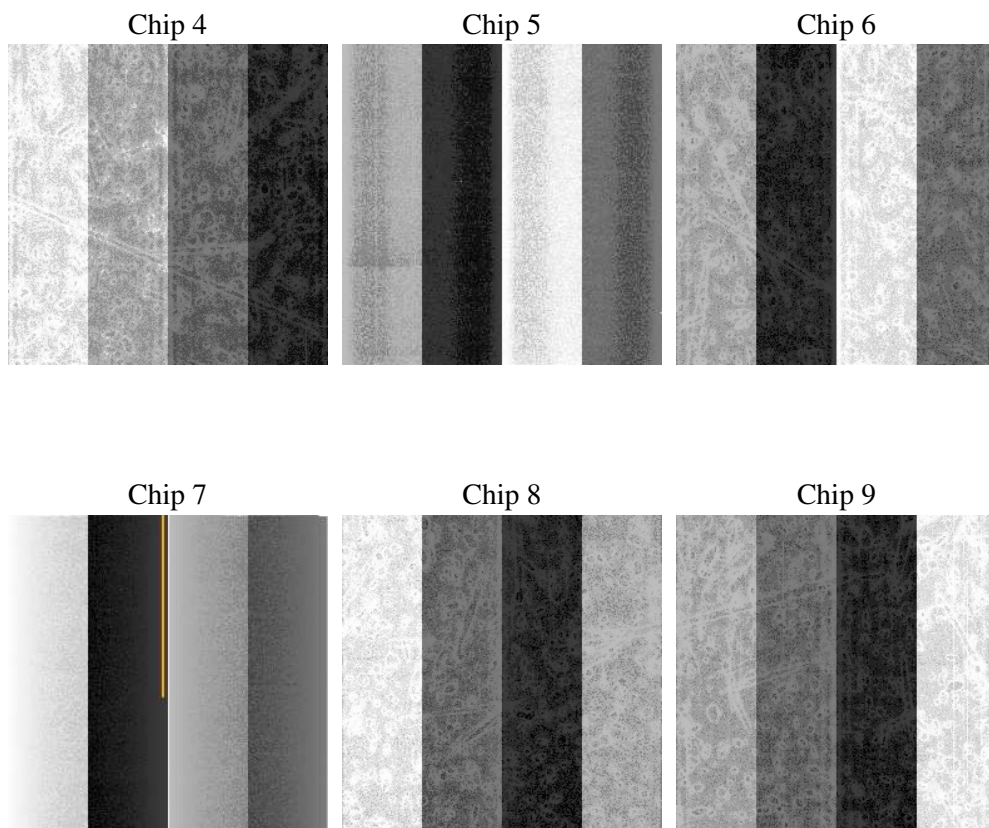
2 OBI

2.1 OBI

2.1.1 Images



2.1.2 Bias



2.1.3 Parameters

obi_num	0
ascdsver	7.6.10
caldsver	3.4.0
date	2007-06-22T12:17:13
revision	3

sched_exp_time	0.0
ontime	5121.7780064642
ontime4	2188.7861987054
ontime5	5504.2532128692
ontime6	2367.0022286624
ontime7	5121.7780064642
ontime8	2386.5306183547
ontime9	2256.6837887913
l1events	1554926

2.1.4 Events

	ccd 4	ccd 5	ccd 6	ccd 7	ccd 8	ccd 9
level 1 events	172814	394324	197491	407473	200350	182474
rejected events	20008	43692	19775	30423	22192	20298
rejected %	11%	11%	10%	7%	11%	11%

	ccd 4	ccd 5	ccd 6	ccd 7	ccd 8	ccd 9
grade 0 events	87585	89859	98386	98520	99680	90093
	50%	22%	49%	24%	49%	49%
grade 1 events	472	274	456	273	486	467
	0%	0%	0%	0%	0%	0%
grade 2 events	27239	125854	30887	84847	31871	29430
	15%	31%	15%	20%	15%	16%
grade 3 events	9520	23278	11067	39236	11359	10111
	5%	5%	5%	9%	5%	5%
grade 4 events	9518	22965	11066	38652	11516	10219
	5%	5%	5%	9%	5%	5%
grade 5 events	1284	8015	1455	5617	1603	1445
	0%	2%	0%	1%	0%	0%
grade 6 events	20947	93459	28459	121007	26597	24691
	12%	23%	14%	29%	13%	13%
grade 7 events	16249	30620	15715	19321	17238	16018
	9%	7%	7%	4%	8%	8%

2.2 Compared Parameters

Parameter	Planned	Actual	Parameter	Planned	Actual
Instrument	ACIS	ACIS	Obspar format version number	6	6
Detector	ACIS-456789	ACIS-456789	Obspar file type	PREDICTED	ACTUAL
Grating	NONE	NONE	Obspar update status	NONE	UPDATED
Data mode	FAINT	FAINT	On-chip summing requested	N	N
Observation mode	SECONDARY	SECONDARY	Subarray requested	NONE	NONE
Pointing RA	0	92.62876877949412	Alternating exposures requested	N	N
Pointing Dec	0	-30.58550374752054	Primary exposure time	0.000000	3.2
Pointing Roll	0.0	357.8129432412015			
SIM focus pos (mm)	-0.684267	-0.7809083437167272			
SIM defocus (mm)	0	0.7524282956875696			
SIM translation stage pos (mm)	-190.132523	250.466033080201			
SIM translation stage offset (mm)	0	-0.01005468664627074			
Observation start time	94149940.436	94149939.667919			
Observation start date	2000-12-25T16:45:40	2000-12-25T16:45:39			
Observation end time	94171494.13699999	94171493.368744			
Observation end date	2000-12-25T22:44:54	2000-12-25T22:44:53			
Read mode	TIMED	TIMED			

2.3 Star Slots

2.4 FID Slots

A Summary

A.1 Status

V&V Scientist	Beth Sundheim
V&V Date (YYYY-MM-DD)	2007.06.22
V&V Edition	1
V&V Disposition and Status	OK
V&V Charge Time	5.121778

A.2 Comments