

V&V Reference Report

L2 ASCDS Version : 7.6.10

Observation 61798 - L2 Version 001
Chandra X-Ray Center

L2 Processing Date : Jun 22 2007

Contents

1	Front	2
2	OBI	3
2.1	OBI	3
2.1.1	Images	3
2.1.2	Bias	3
2.1.3	Parameters	4
2.1.4	Events	4
2.2	Compared Parameters	5
2.3	Star Slots	6
2.4	FID Slots	6
A	Summary	7
A.1	Status	7
A.2	Comments	7

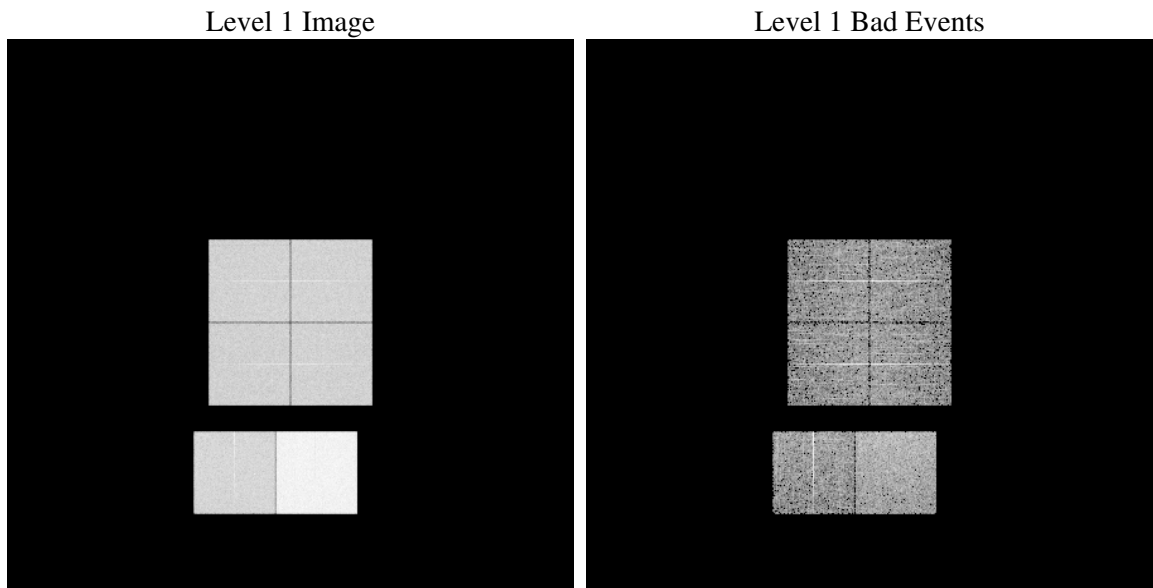
1 Front

seq_num	
obs_id	61798
title	ACIS-012367 diagnostics
observer	CHANDRA engineering request/realtime commanding
object	
dtcycle	0
cycle	P
ra_targ	0.0
dec_targ	0.0
ra_nom	92.630536271589
dec_nom	-30.588439385974
roll_nom	351.1446652834
revision	3
ontime	6243.0367774069
livetime	6163.983686626
ontime0	2658.4975105375
ontime1	2715.0617698282
ontime2	2527.1227494627
ontime3	2580.7125606835
ontime6	2836.7542315722
ontime7	6243.0367774069
l2events	1361891

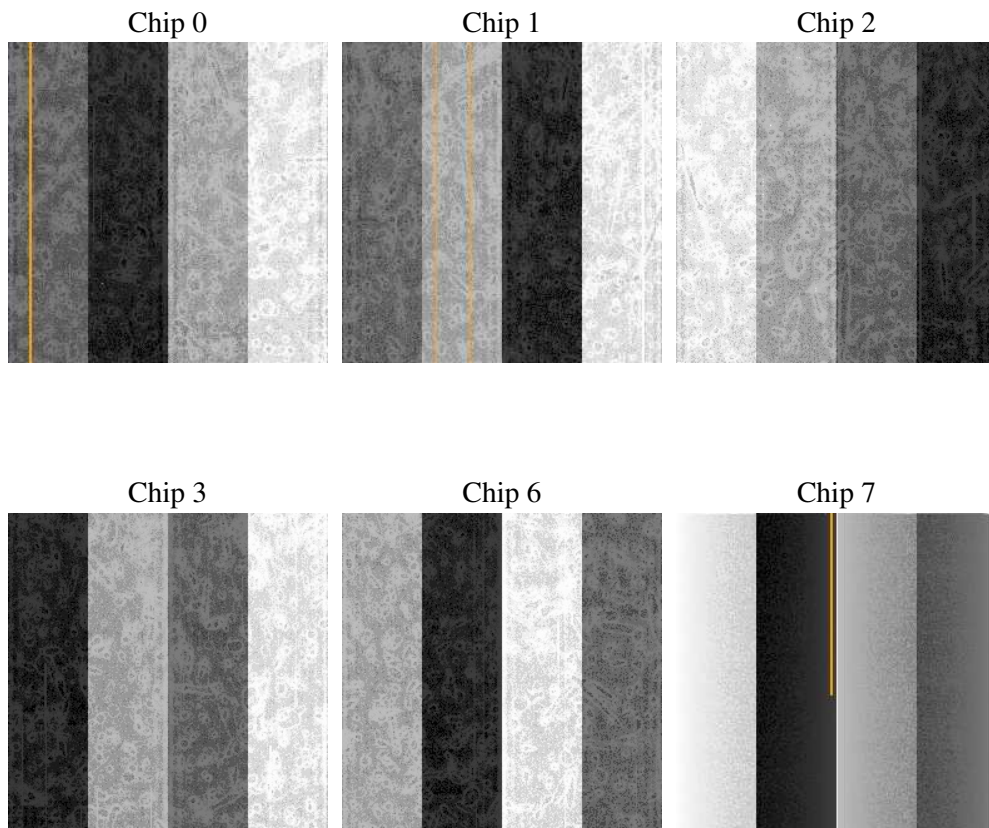
2 OBI

2.1 OBI

2.1.1 Images



2.1.2 Bias



2.1.3 Parameters

obi_num	0
ascdsver	7.6.10
caldbver	3.4.0
date	2007-06-22T13:24:30
revision	3

sched_exp_time	0.0
ontime	6243.0367774069
ontime0	2658.4975105375
ontime1	2715.0617698282
ontime2	2527.1227494627
ontime3	2580.7125606835
ontime6	2836.7542315722
ontime7	6243.0367774069
l1events	1551021

2.1.4 Events

	ccd 0	ccd 1	ccd 2	ccd 3	ccd 6	ccd 7
level 1 events	208566	212654	201795	206197	233281	488528
rejected events	19295	19567	19838	20203	21487	30766
rejected %	9%	9%	9%	9%	9%	6%

	ccd 0	ccd 1	ccd 2	ccd 3	ccd 6	ccd 7
grade 0 events	104733	106597	101309	104360	115250	117801
	50%	50%	50%	50%	49%	24%
grade 1 events	597	507	507	519	573	291
	0%	0%	0%	0%	0%	0%
grade 2 events	33316	33995	31702	32642	36579	101913
	15%	15%	15%	15%	15%	20%
grade 3 events	11834	12238	11588	11635	13278	46604
	5%	5%	5%	5%	5%	9%
grade 4 events	11746	12191	11417	11710	13183	46351
	5%	5%	5%	5%	5%	9%
grade 5 events	1468	1590	1407	1504	1724	6853
	0%	0%	0%	0%	0%	1%
grade 6 events	27642	28066	26078	25647	33617	145212
	13%	13%	12%	12%	14%	29%
grade 7 events	17230	17470	17787	18180	19077	23503
	8%	8%	8%	8%	8%	4%

2.2 Compared Parameters

Parameter	Planned	Actual	Parameter	Planned	Actual
Instrument	ACIS	ACIS	Obspar format version number	6	6
Detector	ACIS-012367	ACIS-012367	Obspar file type	PREDICTED	ACTUAL
Grating	NONE	NONE	Obspar update status	NONE	UPDATED
Data mode	FAINT	FAINT	On-chip summing requested	N	N
Observation mode	SECONDARY	SECONDARY	Subarray requested	NONE	NONE
Pointing RA	0	92.63053627158882	Alternating exposures requested	N	N
Pointing Dec	0	-30.58843938597421	Primary exposure time	3.2	3.2
Pointing Roll	0.0	351.1446652834025			
SIM focus pos (mm)	-0.782348	-0.6828225247311905			
SIM defocus (mm)	0	0.8505141146731063			
SIM translation stage pos (mm)	-233.592463	250.466033080201			
SIM translation stage offset (mm)	0	-0.01005468664627074			
Observation start time	94608351.20393901	94608350.43547399			
Observation start date	2000-12-31T00:05:51	2000-12-31T00:05:50			
Observation end time	94629660.95475499	94629660.18629			
Observation end date	2000-12-31T06:01:01	2000-12-31T06:01:00			
Read mode	TIMED	TIMED			

2.3 Star Slots

2.4 FID Slots

A Summary

A.1 Status

V&V Scientist	Beth Sundheim
V&V Date (YYYY-MM-DD)	2007.06.22
V&V Edition	1
V&V Disposition and Status	OK
V&V Charge Time	6.24303677

A.2 Comments