

V&V Reference Report

L2 ASCDS Version : 8.1.1

Observation 62289 - L2 Version 4
Chandra X-Ray Center

L2 Processing Date : Nov 25 2009

Contents

1	Front	2
2	OBI	3
2.1	OBI	3
2.1.1	Images	3
2.1.2	Bias	3
2.1.3	Parameters	4
2.1.4	Events	4
2.2	Compared Parameters	5
2.3	Star Slots	6
2.4	FID Slots	6
A	Summary	7
A.1	Status	7
A.2	Comments	7

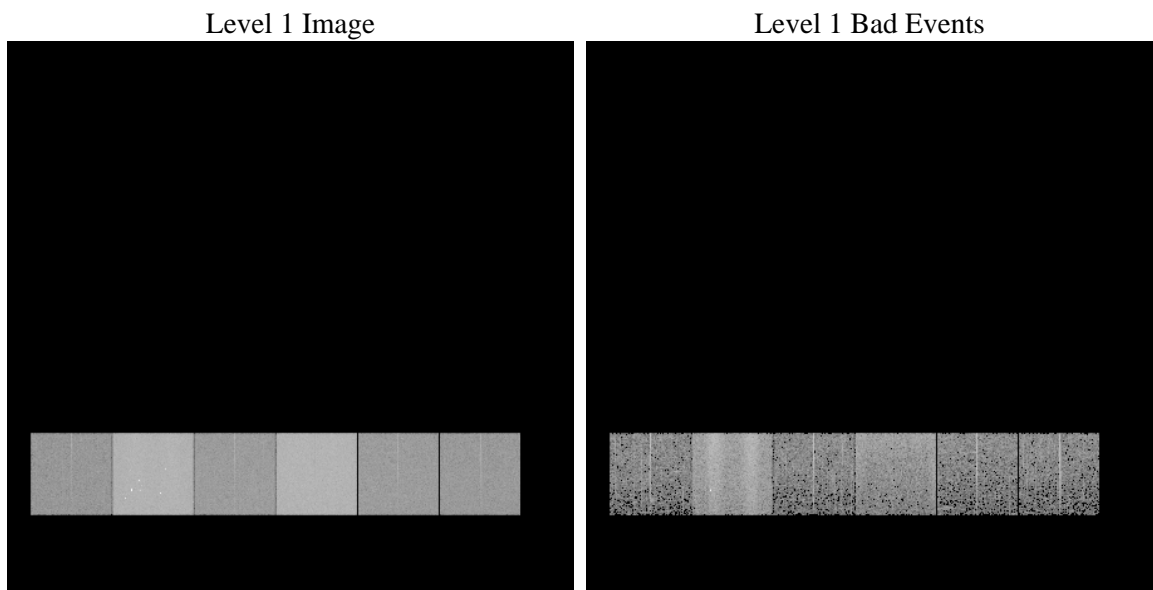
1 Front

seq_num	 	Sequence number
obs_id	62289	Observation id
title	ACIS-456789 diagnostics	Proposal title
observer	CHANDRA engineering request/realtime commanding	Principal investig
object	 	Source name
dtcycle	0	
cycle	P	events from which exps? Prim/Second/Both
ra_targ	0.0	Observer's specified target RA
dec_targ	0.0	Observer's specified target Dec
ra_nom	240.08899590173	Nominal RA
dec_nom	70.023410968142	Nominal Dec
roll_nom	7.5899712108154	Nominal Roll
revision	4	Processing version of data
ontime	2828.7108341679	Sum of GTIs [s]
livetime	2792.8919943405	Livetime [s]
ontime4	1105.1933554336	Sum of GTIs [s]
ontime5	3027.120144479	Sum of GTIs [s]
ontime6	1251.04001607	Sum of GTIs [s]
ontime7	2828.7108341679	Sum of GTIs [s]
ontime8	1233.9612948895	Sum of GTIs [s]
ontime9	1166.773115553	Sum of GTIs [s]
l2events	909469	Number of level 2 events

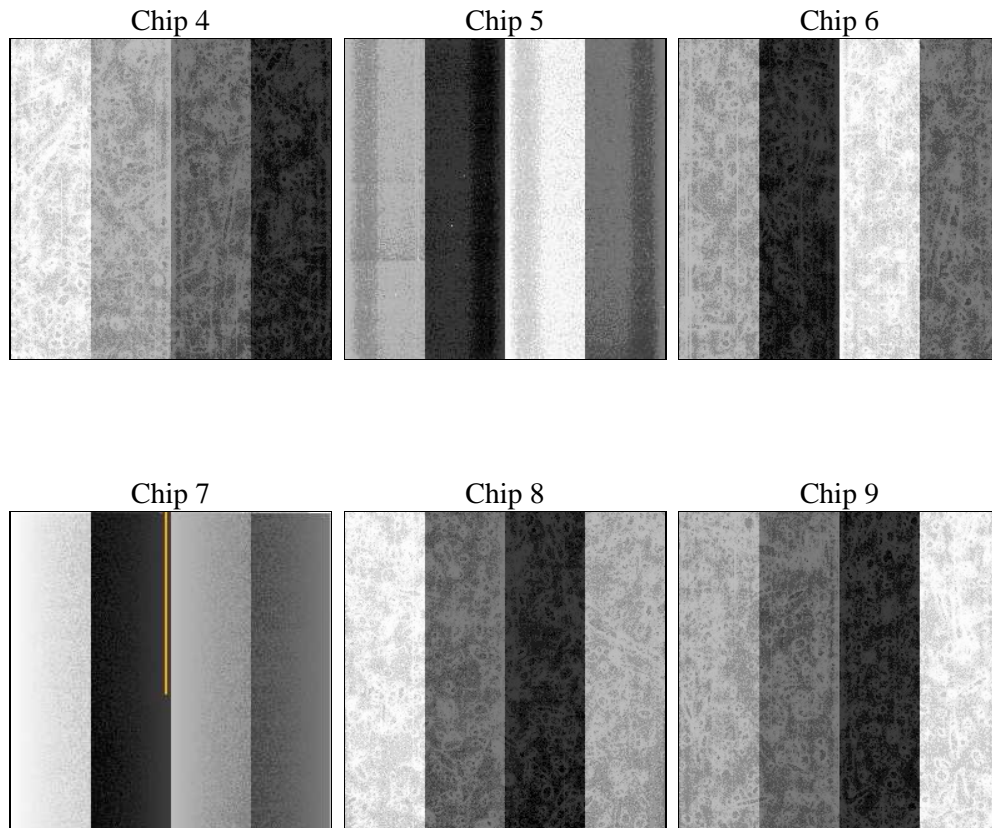
2 OBI

2.1 OBI

2.1.1 Images



2.1.2 Bias



2.1.4 Events

	ccd 4	ccd 5	ccd 6	ccd 7	ccd 8	ccd 9
level 1 events	108200	288074	129550	292222	128667	117021
rejected events	17482	44900	17758	27056	17156	16748
rejected %	16%	15%	13%	9%	13%	14%

2.2 Compared Parameters

Parameter	Planned	Actual	Parameter	Planned	Actual
Instrument	ACIS	ACIS	Obspar format version number	6	6
Detector	ACIS-456789	ACIS-456789	Obspar file type	PREDICTED	ACTUAL
Grating	NONE	NONE	Obspar update status	NONE	UPDATED
Data mode	FAINT	FAINT	On-chip summing requested	N	N
Observation mode	SECONDARY	SECONDARY	Subarray requested	NONE	NONE
Pointing RA	0	240.0889959017293	Alternating exposures requested	N	N
Pointing Dec	0	70.02341096814233	Primary exposure time	0.000000	3.2
Pointing Roll	0.0	7.589971210815365			
SIM focus pos (mm)	-0.684267	-0.7809083437167272			
SIM defocus (mm)	0	0.7524282956875696			
SIM translation stage pos (mm)	-190.132523	250.466033080201			
SIM translation stage offset (mm)	0	-0.01005468664627074			
Observation start time	60531736.987	60531736.218401			
Observation start date	1999-12-02T14:22:17	1999-12-02T14:22:16			
Observation end time	60577716.439	60577715.670064			
Observation end date	1999-12-03T03:08:36	1999-12-03T03:08:35			
Read mode	TIMED	TIMED			

2.3 Star Slots

2.4 FID Slots

A Summary

A.1 Status

V&V Scientist	Jen Lauer
V&V Date (YYYY-MM-DD)	2010.01.25
V&V Edition	1
V&V Disposition and Status	OK
V&V Charge Time	2.8287108341679

A.2 Comments

The focal plane temperature is approximately -110C during this observation. This reprocessing of the data applies no CTI correction because none is available for this temperature at present.

The ACIS CTI correction has not been calibrated at this temperature, because it was early in the mission, and ACIS had not yet been lowered to the standard -119.7 C. Both front and back illuminated chips are affected. However a T_GAIN correction has been applied to the BI chips (ACIS-5 and ACIS-7) data included here.

The ACIS spectral response calibration is less accurate at these warmer temperatures than it is at -119.7 C. Users whose science objectives depend on the most accurate spectral response (ie: fitting line-rich spectra) may notice an effect. Users whose science objectives do not depend on the most accurate spectral response should not notice an effect.