

V&V Reference Report

L2 ASCDS Version : 10.5.2

Observation 19872 - L2 Version 2
Chandra X-Ray Center

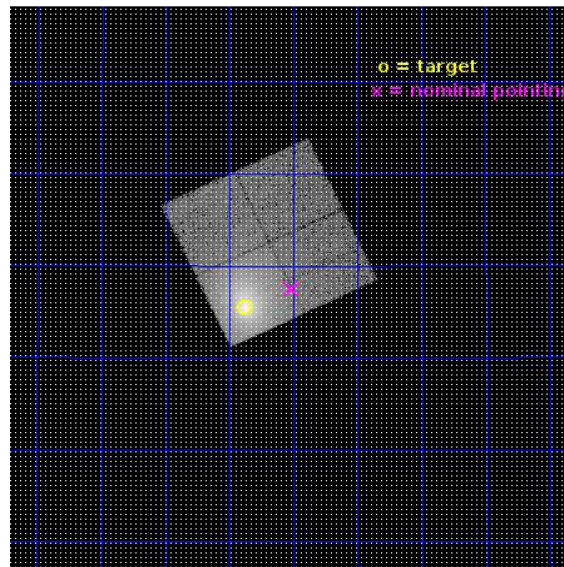
L2 Processing Date : Apr 12 2017

Contents

1	Front	2
2	OBI	3
2.1	OBI	3
2.1.1	Images	3
2.1.2	Bias	3
2.1.3	Parameters	4
2.1.4	Events	4
2.2	Compared Parameters	5
2.3	Aspect	6
2.4	Star Slots	9
2.4.1	Slot 3	9
2.4.2	Slot 5	10
2.4.3	Slot 6	11
2.4.4	Slot 7	12
2.5	FID Slots	13
2.5.1	Slot 0	13
2.5.2	Slot 1	14
2.5.3	Slot 2	15
A	Summary	16
A.1	Status	16
A.2	Comments	16

1 Front

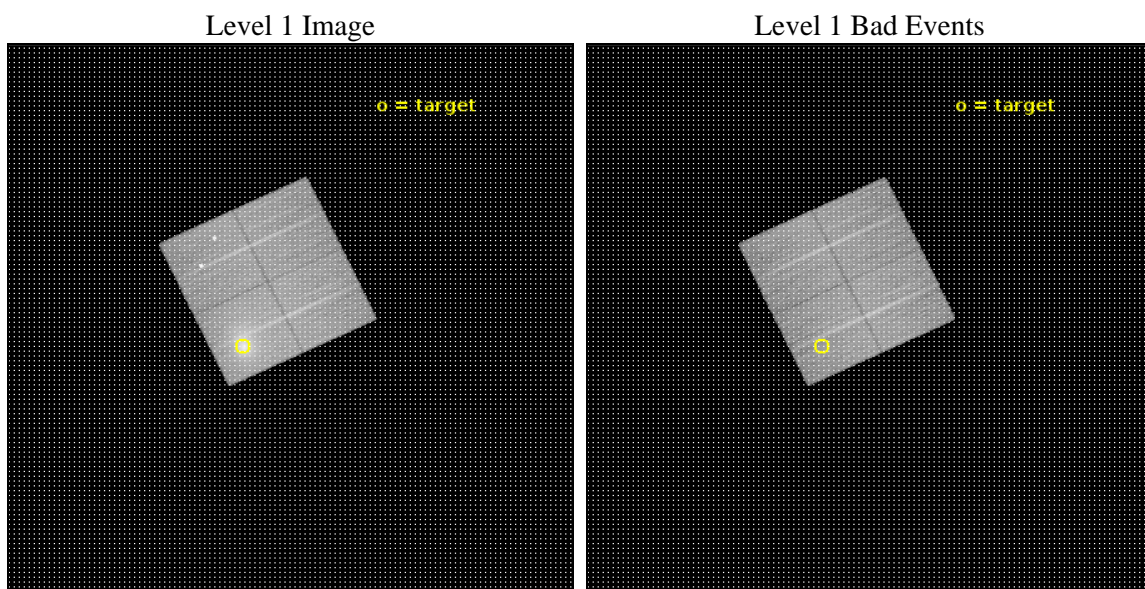
seq_num	890137	Sequence number
obs_id	19872	Observation id
title	AO-18 Calibration Observations of A1795	Proposal title
observer	CXC Calibration	Principal investigator
object	A1795	Source name
dtcycle	0	
cycle	P	events from which exps? Prim/Second/Both
ra_targ	207.219583	Observer's specified target RA [deg]
dec_targ	26.590833	Observer's specified target Dec [deg]
ra_nom	207.12911512826	Nominal RA [deg]
dec_nom	26.625280089395	Nominal Dec [deg]
roll_nom	154.66728017784	Nominal Roll [deg]
revision	2	Processing version of data
ontime	24079.785776138	Sum of GTIs [s]
livetime	23765.165647693	Livetime [s]
ontime0	24076.521596074	Sum of GTIs [s]
ontime1	24076.562605977	Sum of GTIs [s]
ontime2	24079.744736195	Sum of GTIs [s]
ontime3	24079.785776138	Sum of GTIs [s]
l2events	184895	Number of level 2 events



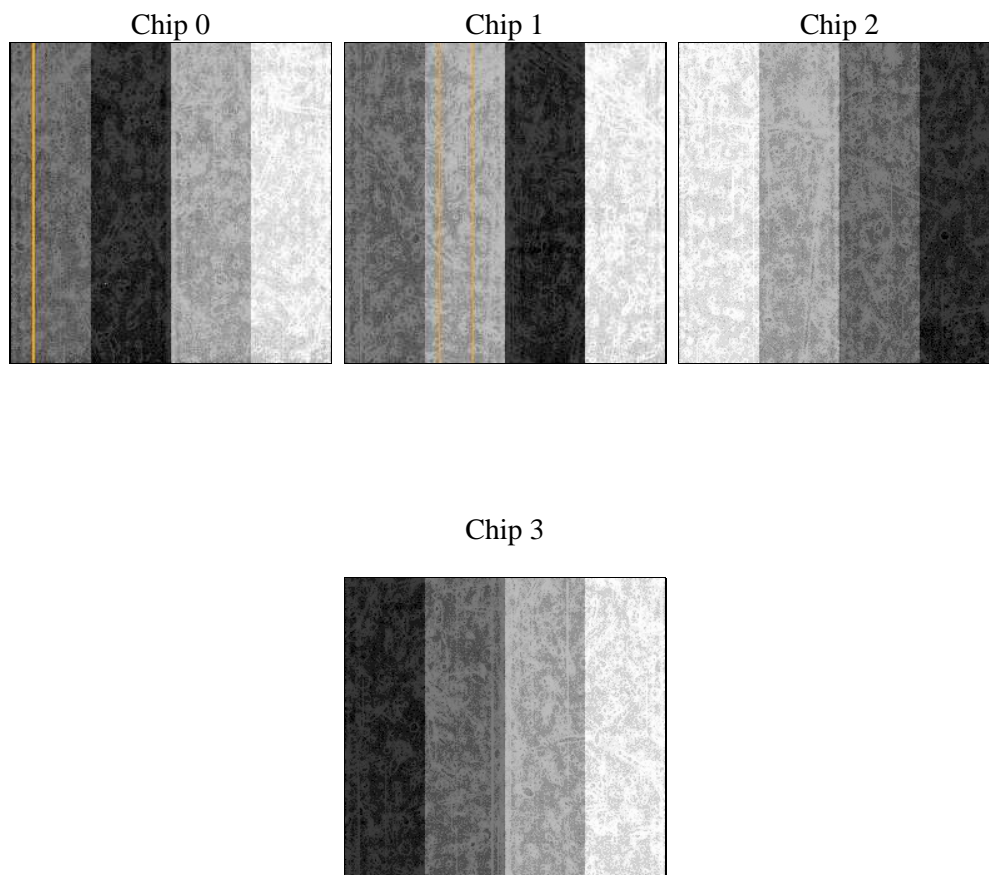
2 OBI

2.1 OBI

2.1.1 Images



2.1.2 Bias



2.1.3 Parameters

obi_num	1	Obi number	sched_exp_time	24000.000000	[s] Scheduled observation exposure time
ascdsver	10.5.4	Processing system revision	ontime	24079.785776138	Sum of GTIs [s]
caldsver	4.7.3	 	ontime0	24076.521596074	Sum of GTIs [s]
date	2017-04-12T23:18:56	Date and time of file creation	ontime1	24076.562605977	Sum of GTIs [s]
revision	2	Processing version of data	ontime2	24079.744736195	Sum of GTIs [s]
			ontime3	24079.785776138	Sum of GTIs [s]
			l1events	805694	Number of level 1 events

2.1.4 Events

	ccd 0	ccd 1	ccd 2	ccd 3
level 1 events	159069	175471	182301	288853
rejected events	140113	140162	161630	151591
rejected %	88%	79%	88%	52%

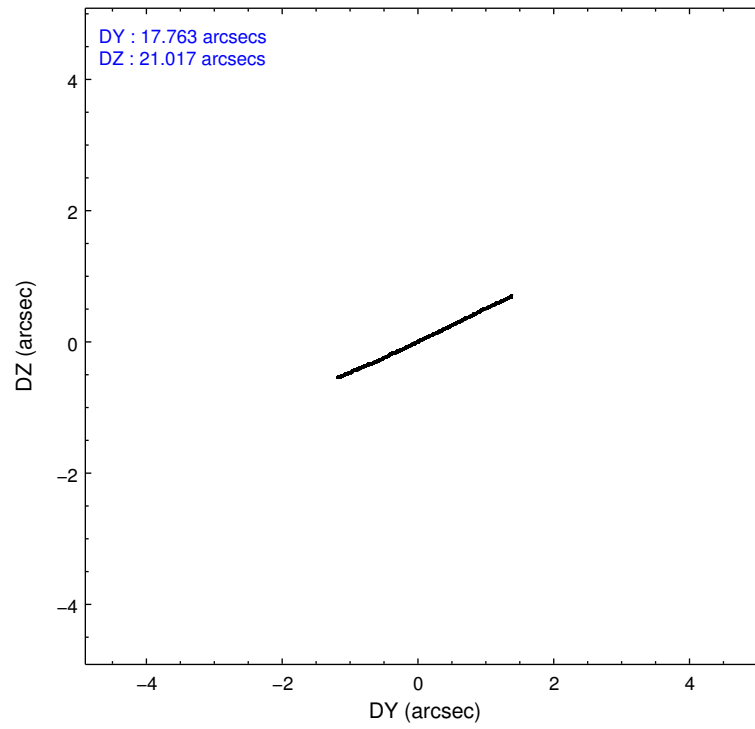
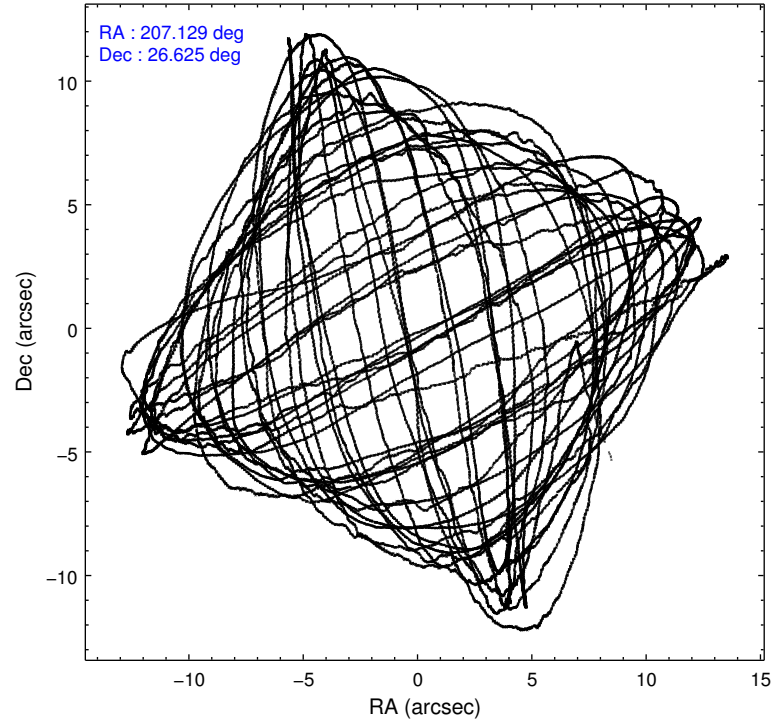
	ccd 0	ccd 1	ccd 2	ccd 3
grade 0 events	6699	21177	8808	101008
	4%	12%	4%	34%
grade 1 events	103	150	84	544
	0%	0%	0%	0%
grade 2 events	4641	5205	4443	16723
	2%	2%	2%	5%
grade 3 events	1884	2016	1903	5948
	1%	1%	1%	2%
grade 4 events	1800	1978	1852	6047
	1%	1%	1%	2%
grade 5 events	6716	7135	6356	8198
	4%	4%	3%	2%
grade 6 events	3941	4945	3671	7579
	2%	2%	2%	2%
grade 7 events	133285	132865	155184	142806
	83%	75%	85%	49%

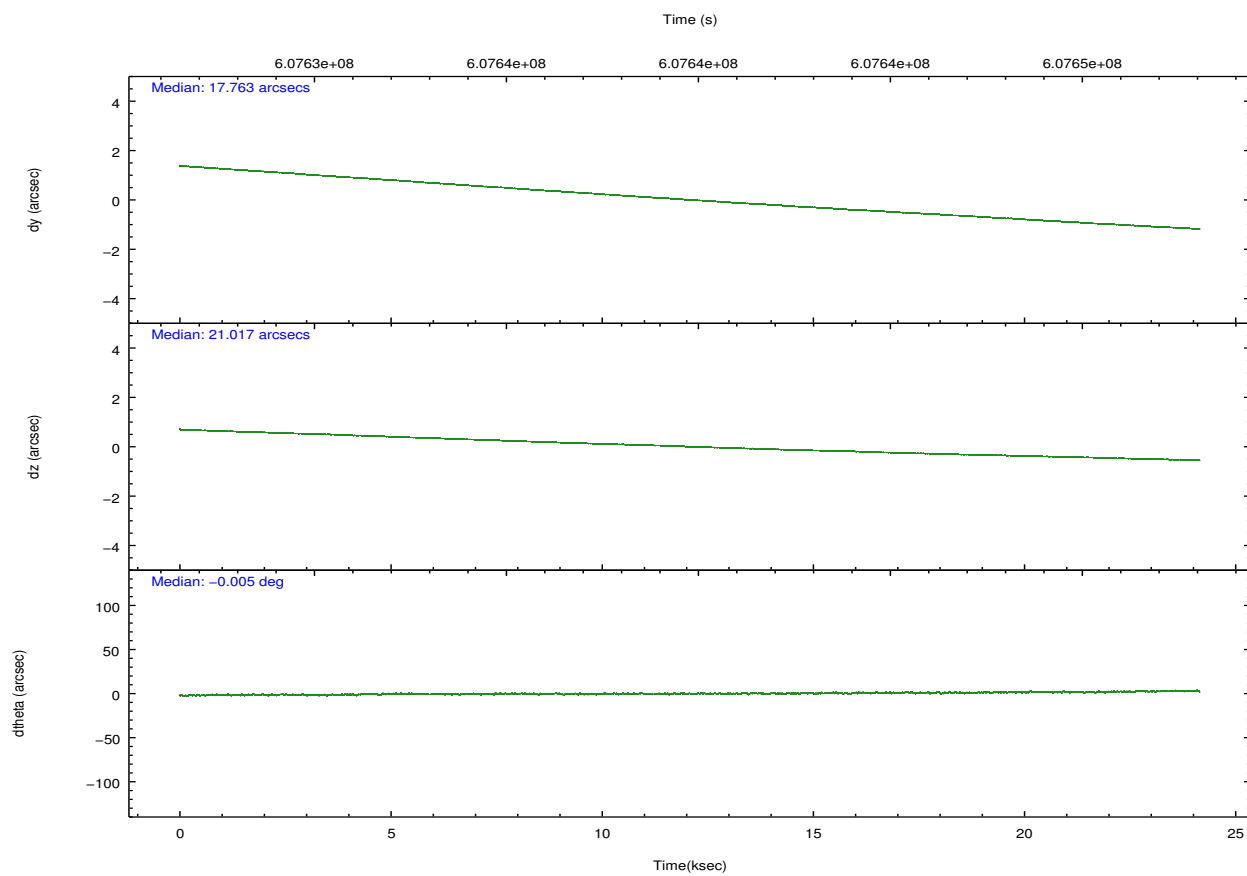
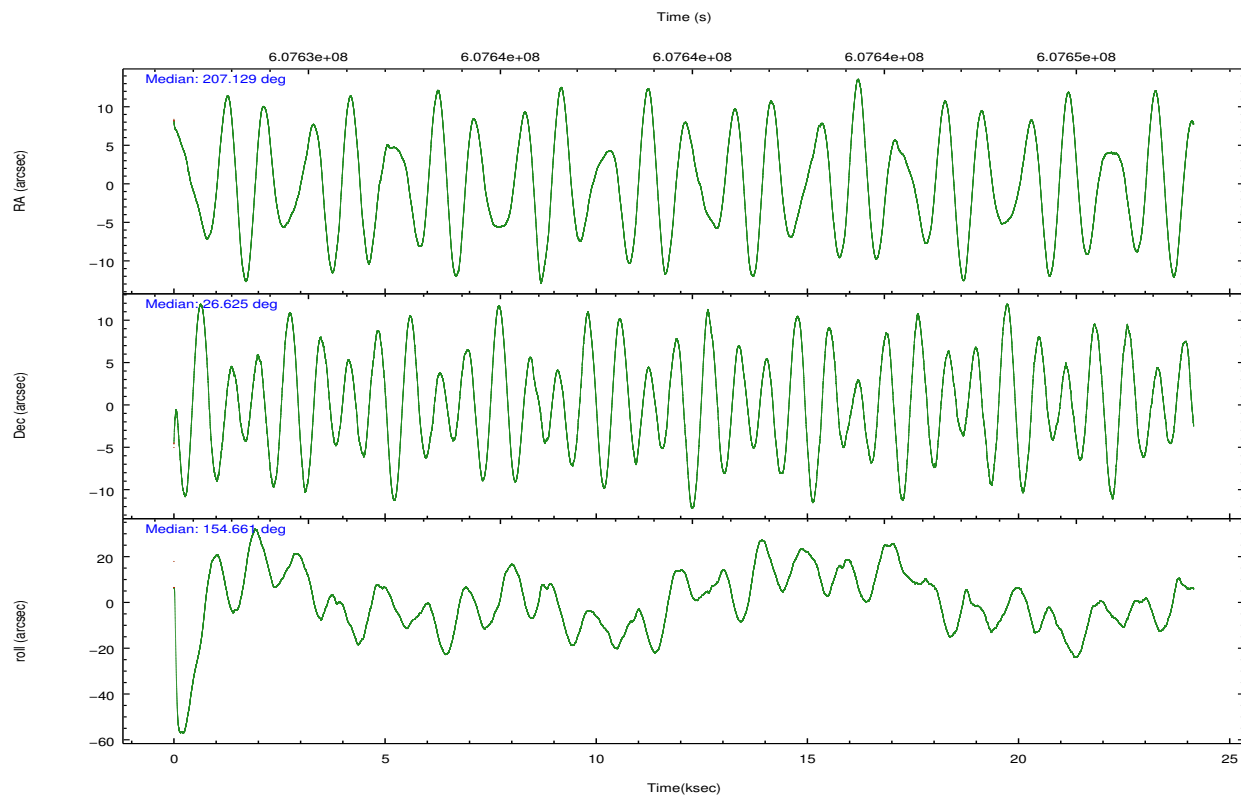
2.2 Compared Parameters

Parameter	Planned	Actual
Instrument	ACIS	ACIS
Detector	ACIS-0123	ACIS-0123
Grating	NONE	NONE
Data mode	VFAINT	VFAINT
Observation mode	POINTING	POINTING
[deg] Pointing RA	207.159866	207.1291151282633
[deg] Pointing Dec	26.627632	26.6252800893949
[deg] Pointing Roll	154.444782	154.6672801778402
[s] Window start time (MET)	607392069.184000	607392069.184000
[s] Window stop time (MET)	609897669.184000	609897669.184000
[mm] SIM focus pos	-0.782348	-0.7809083437167272
[mm] SIM defocus	0	0.001439871863259334
[mm] SIM translation stage pos	-219.472463	-219.4670397272677
[mm] SIM translation stage offset	-14.12	-14.12541327566197
[s] Observation start time (MET)	607627829.184000	607626098.00261
Observation start date	2017-04-03T17:29:20	2017-04-03T17:01:38
[s] Observation end time (MET)	607651829.184000	607652204.2416199
Observation end date	2017-04-04T00:09:20	2017-04-04T00:16:44
Read mode	TIMED	TIMED

Parameter	Planned	Actual
Obspar format version number	7	7
Obspar file type	PREDICTED	ACTUAL
Obspar update status	NONE	UPDATED
CCD I0 on	Y	Y
CCD I1 on	Y	Y
CCD I2 on	Y	Y
CCD I3 on	Y	Y
CCD S0 on	N	N
CCD S1 on	N	N
CCD S2 on	O1	N
CCD S3 on	N	N
CCD S4 on	N	N
CCD S5 on	N	N
Number of optional ACIS chips dropped	1	1
On-chip summing requested	N	N
Subarray requested	NONE	NONE
Alternating exposures requested	N	N
[s] Primary exposure time	0.000000	3.1

2.3 Aspect



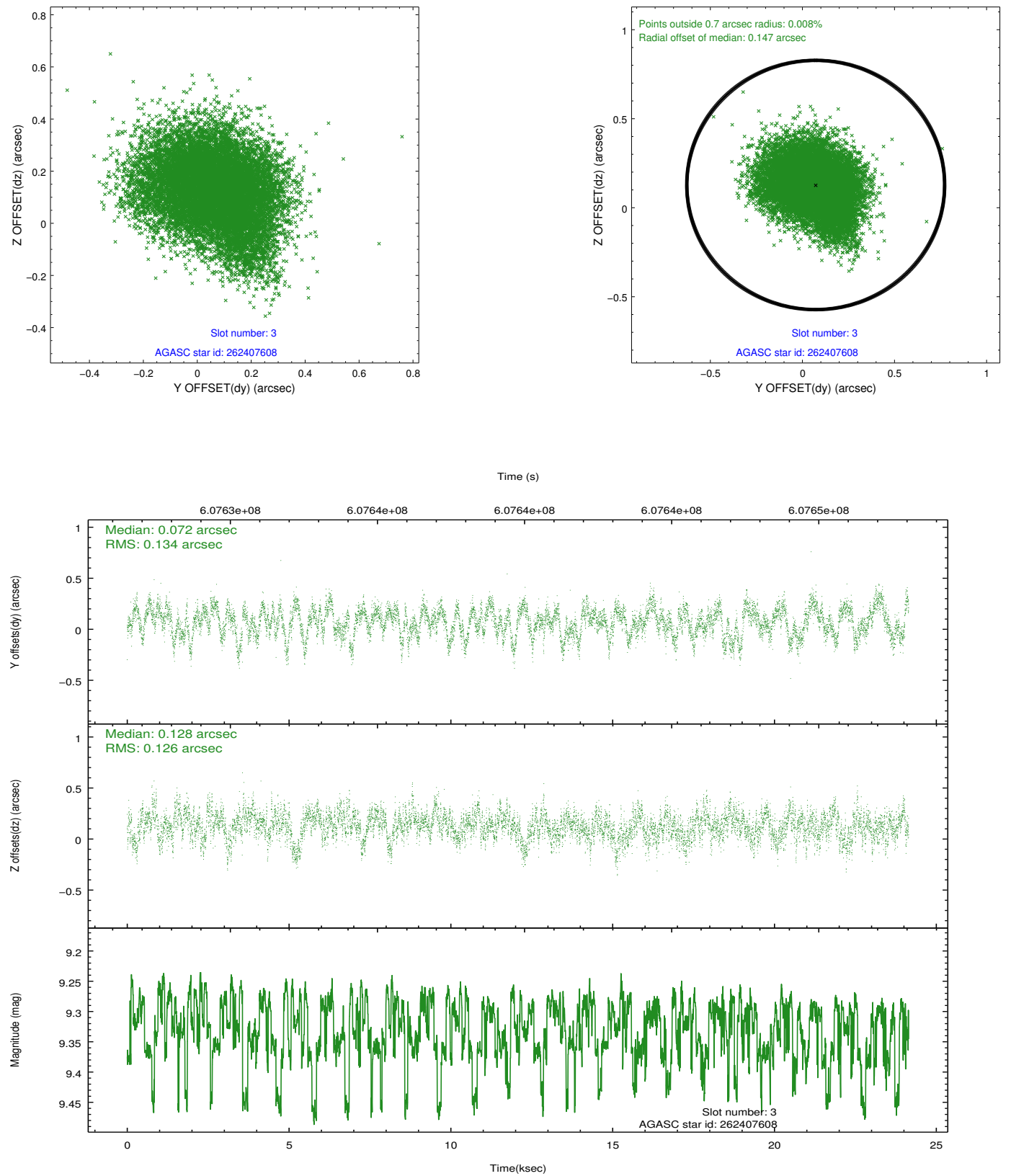


Slot Statistics

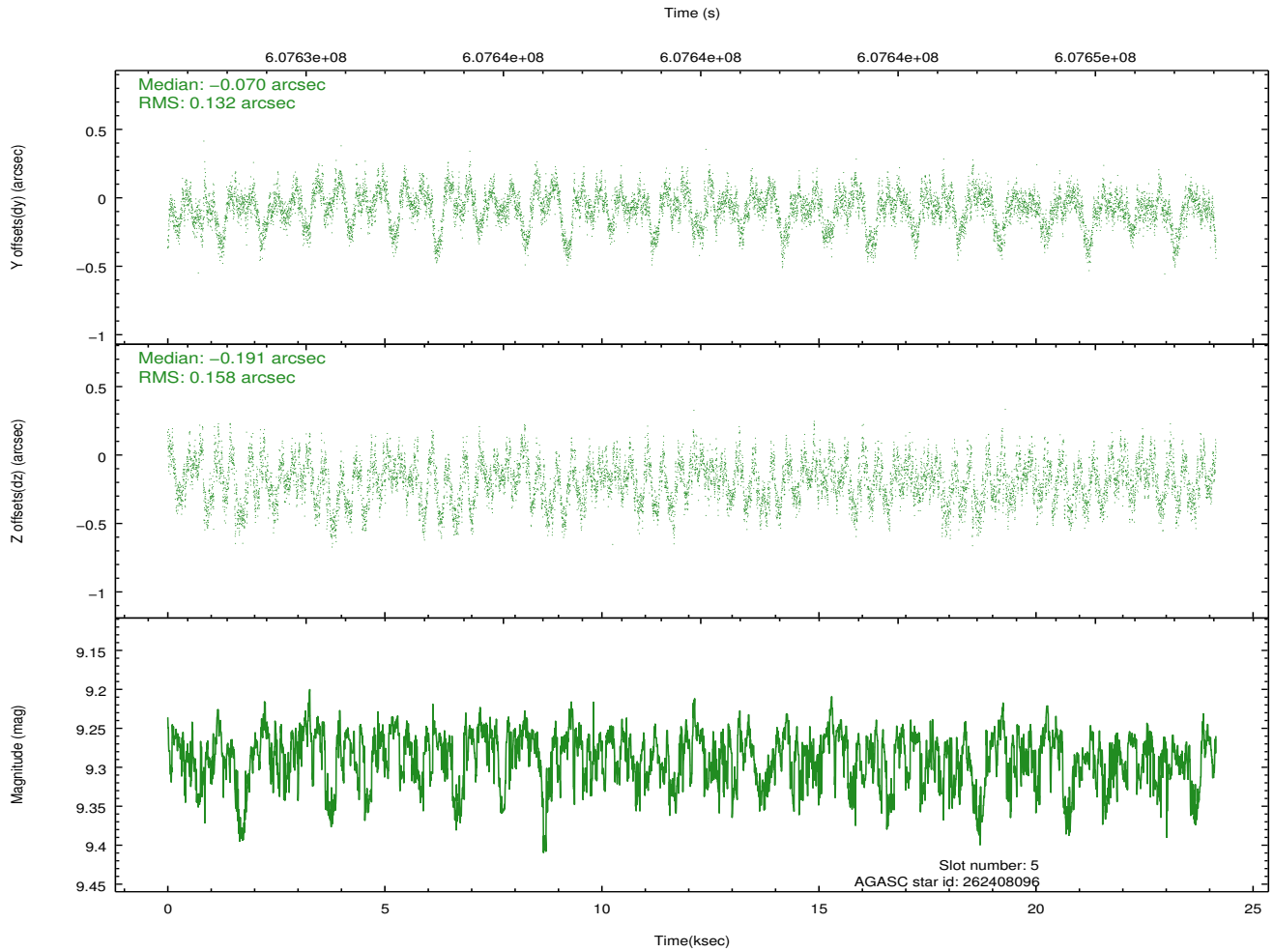
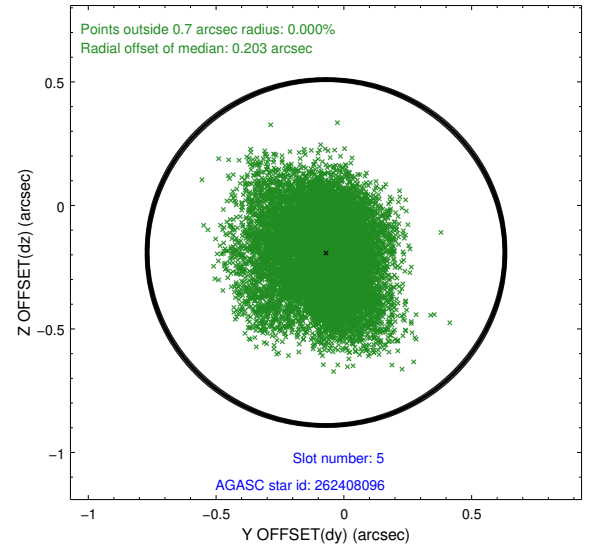
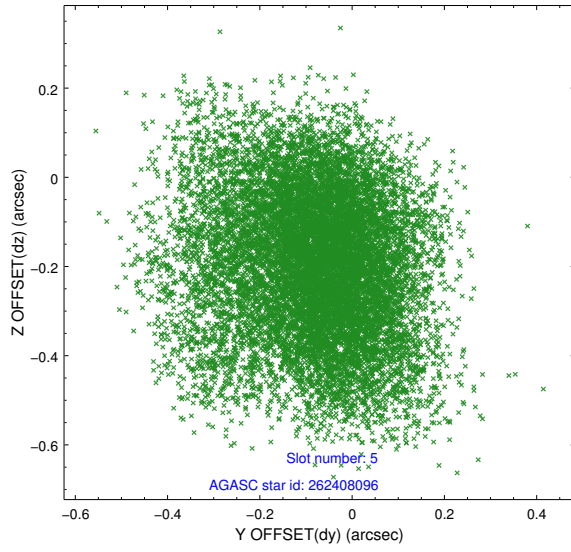
slot	status	used	id	mag	n_pts	med_dy	med_dz	dr1	dr2	ra	dec	mean_y	mean_z
0	FID		ACIS-I-1	7.21	5890	0.248	-0.173	0.020	0.029	0.000000	0.000000	921.61	-1135.00
1	FID		ACIS-I-5	7.23	5890	-0.541	0.150	0.023	0.041	0.000000	0.000000	-1827.30	762.56
2	FID		ACIS-I-6	7.27	5887	0.197	0.098	0.029	0.055	0.000000	0.000000	386.85	1407.28
3	GUIDE	used	262407608	9.33	11769	0.072	0.128	0.197	0.314	207.378401	26.435507	-933.69	319.85
4	OMITTED			0.00	0	0.000	0.000	0.000	0.000	0.000000	0.000000	0.00	0.00
5	GUIDE	used	262408096	9.28	11766	-0.070	-0.191	0.222	0.355	207.011678	26.515421	257.13	570.29
6	GUIDE	used	262408936	9.63	11756	0.000	0.164	0.213	0.332	207.154731	26.726554	168.38	-313.58
7	GUIDE	used	262411960	9.63	11742	0.019	-0.094	0.212	0.333	207.327895	25.881727	-1649.27	2187.48

2.4 Star Slots

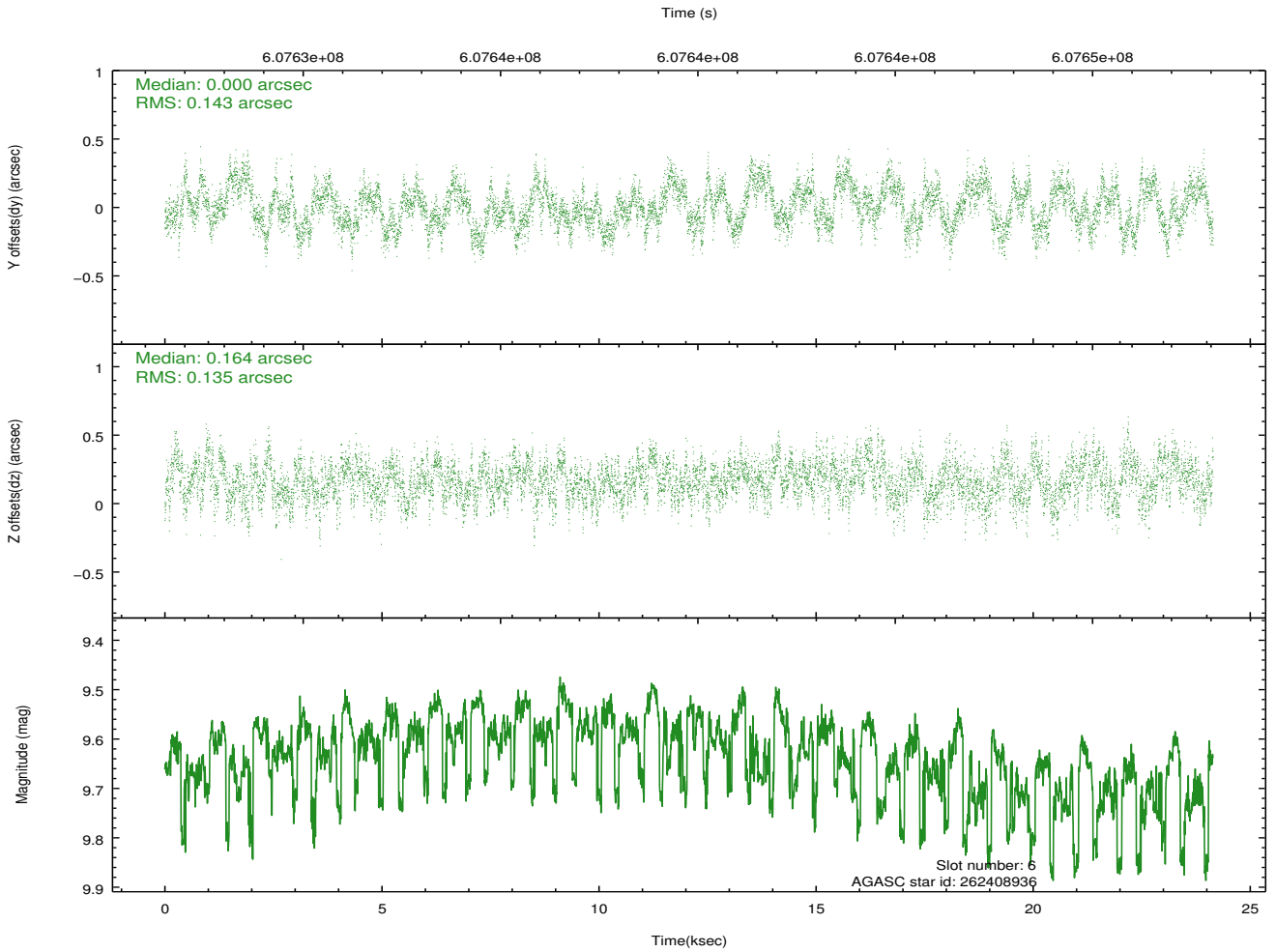
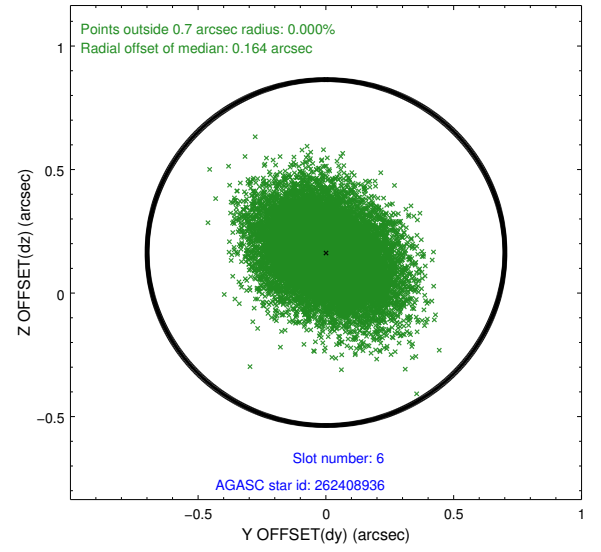
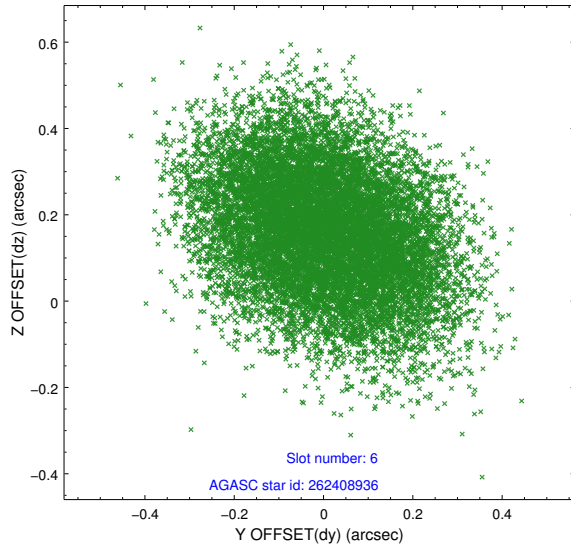
2.4.1 Slot 3



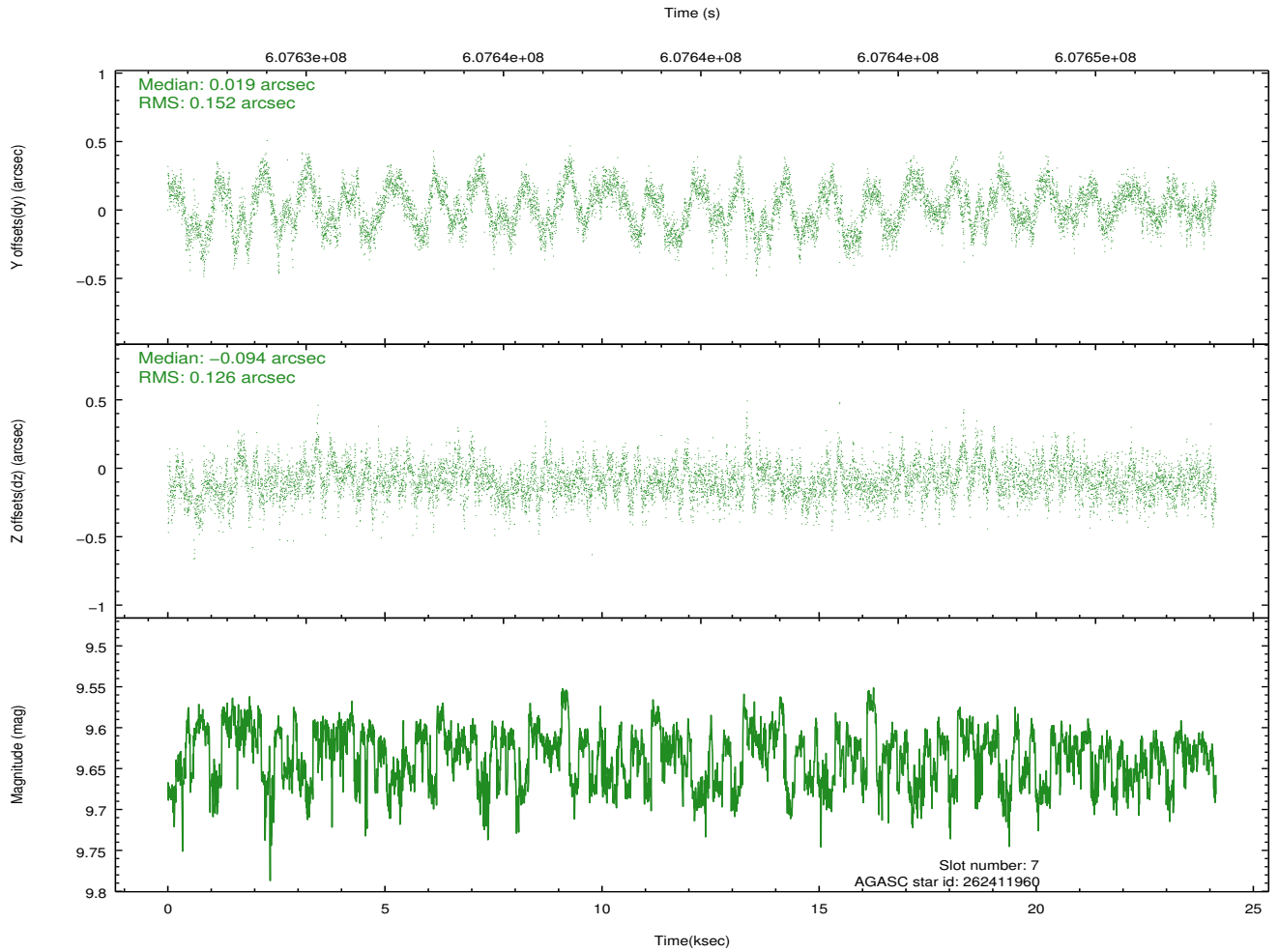
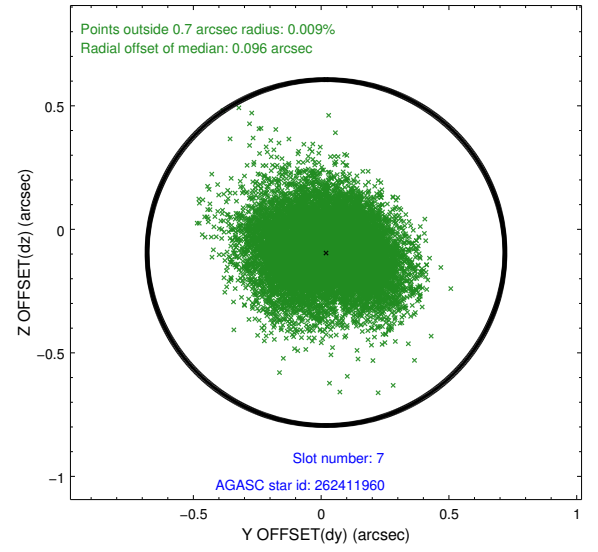
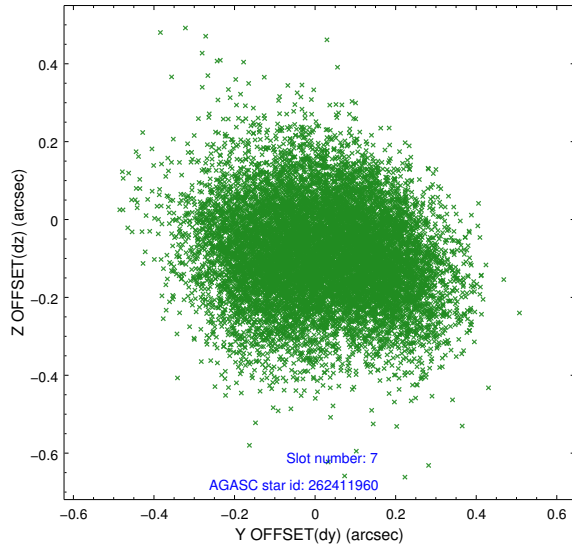
2.4.2 Slot 5



2.4.3 Slot 6

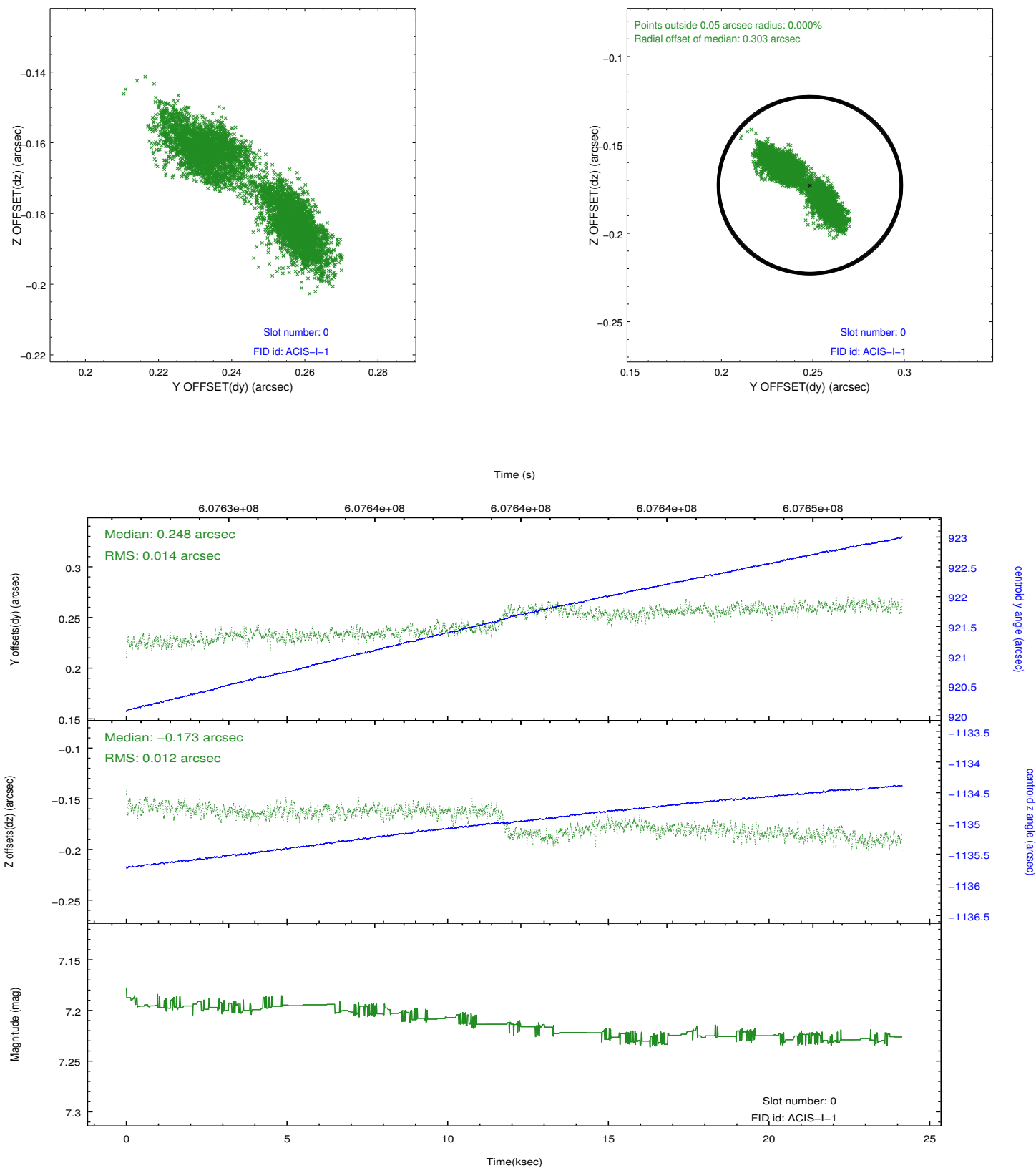


2.4.4 Slot 7

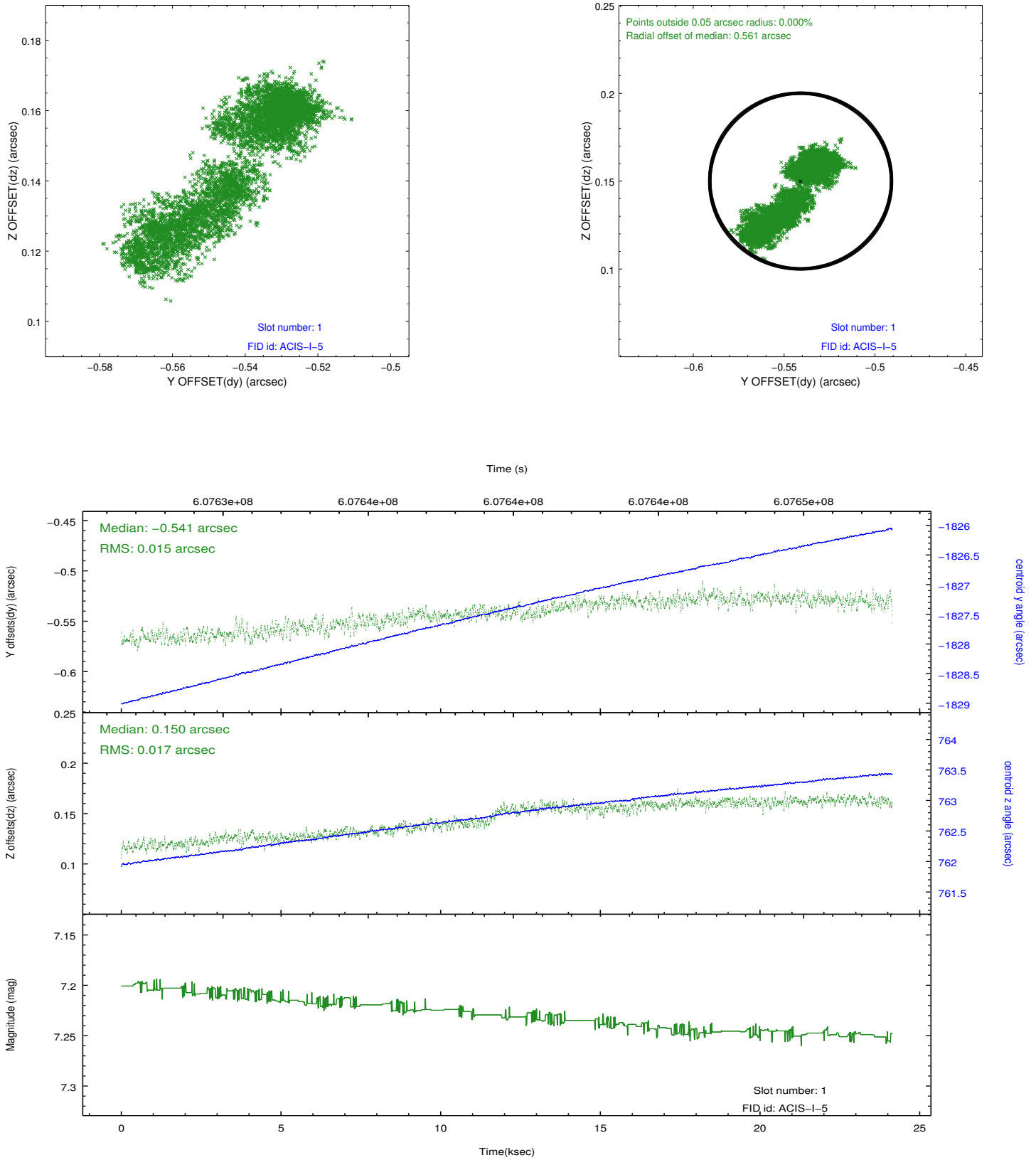


2.5 FID Slots

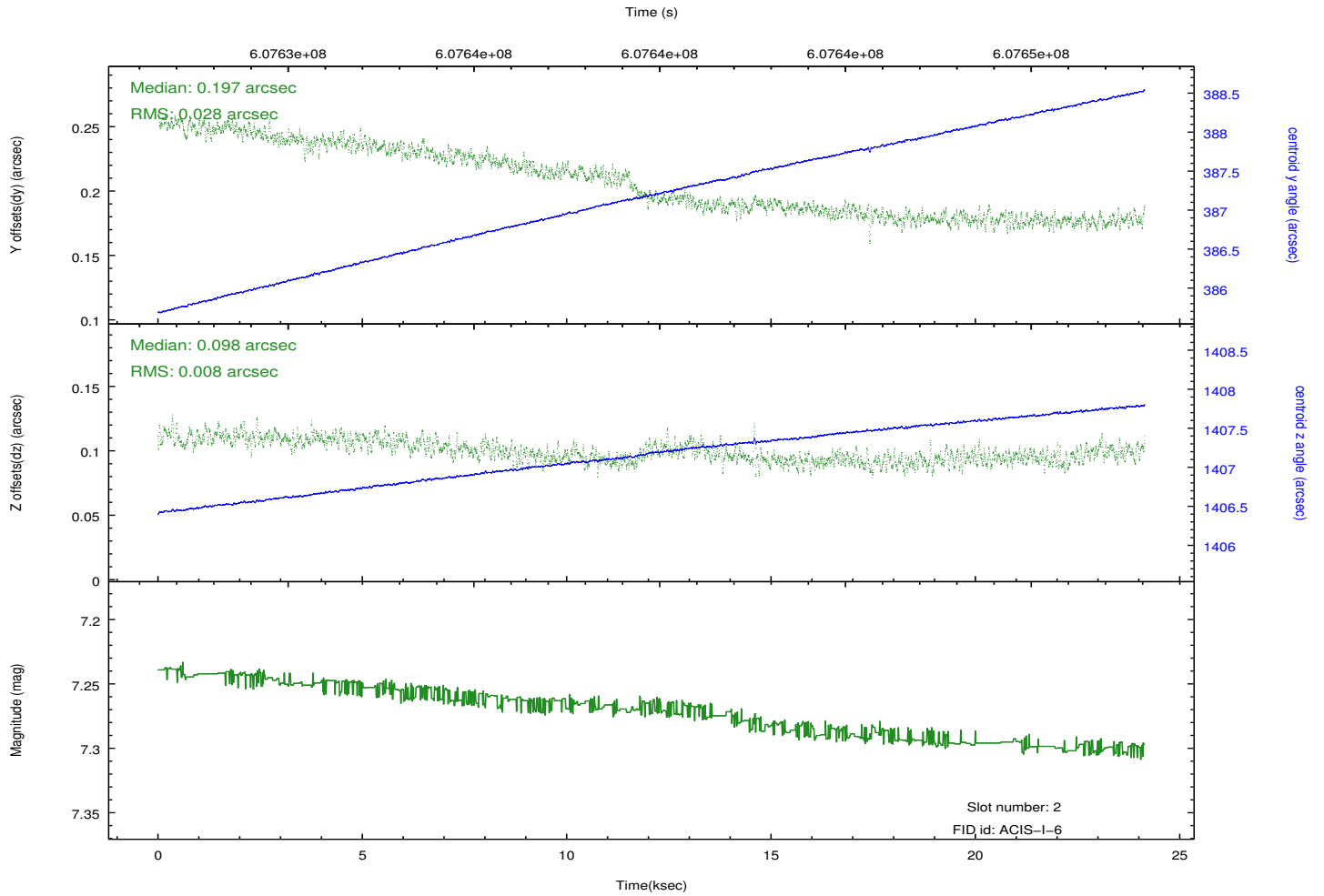
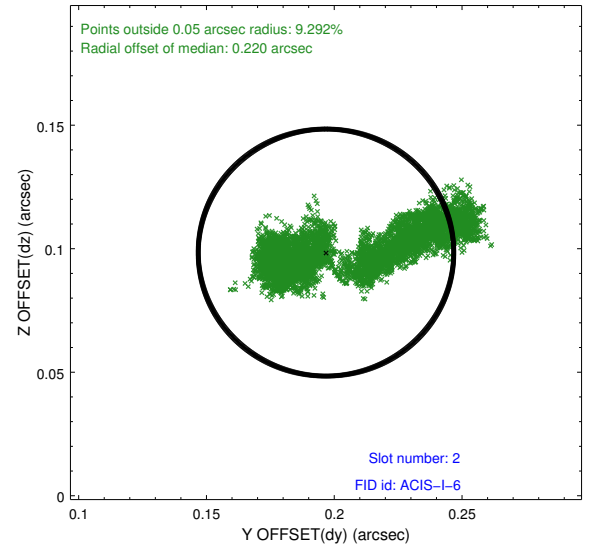
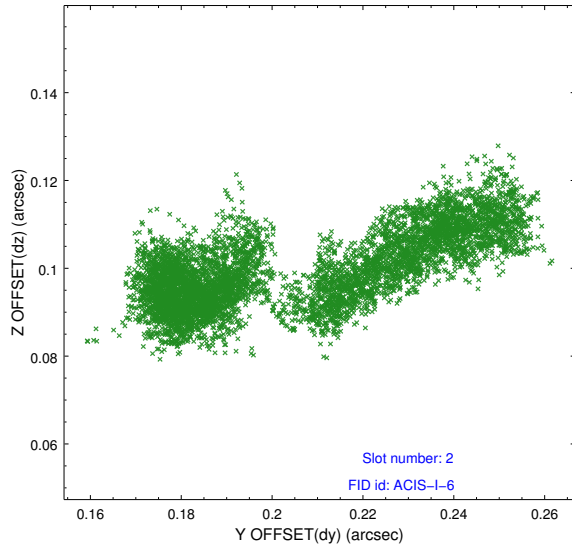
2.5.1 Slot 0



2.5.2 Slot 1



2.5.3 Slot 2



A Summary

A.1 Status

V&V Scientist	Joy Nichols
V&V Date (YYYY-MM-DD)	2017.04.13
V&V Edition	1
V&V Disposition and Status	OK
V&V Charge Time	24.079785776138

A.2 Comments

The guide star in slot 4 was removed from the aspect solution due to poor data quality. The aspect solution is improved by the removal of this guide star from the solution.