

V&V Reference Report

L2 ASCDS Version : 10.6

Observation 19857 - L2 Version 1
Chandra X-Ray Center

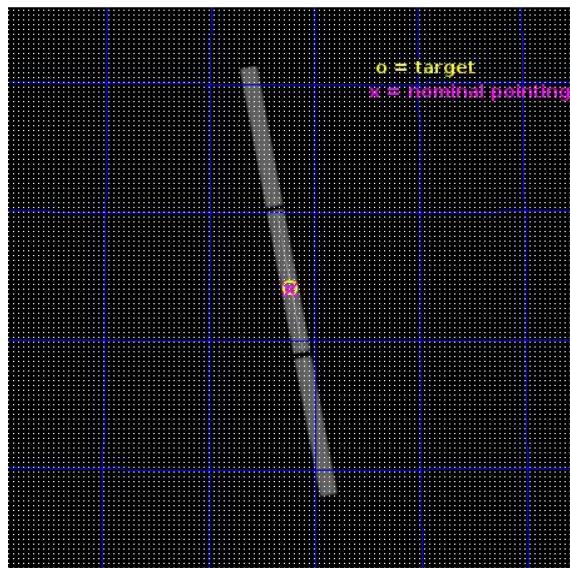
L2 Processing Date : Jun 23 2017

Contents

1	Front	2
2	OBI	3
2.1	OBI	3
2.1.1	Images	3
2.1.2	Parameters	4
2.1.3	Events	4
2.2	Compared Parameters	5
2.3	Aspect	6
2.4	Star Slots	9
2.4.1	Slot 3	9
2.4.2	Slot 4	10
2.4.3	Slot 5	11
2.4.4	Slot 6	12
2.4.5	Slot 7	13
2.5	FID Slots	14
2.5.1	Slot 0	14
2.5.2	Slot 1	15
2.5.3	Slot 2	16
3	Gratings	17
3.1	LETG Arm	17
A	Summary	19
A.1	Status	19
A.2	Comments	19

1 Front

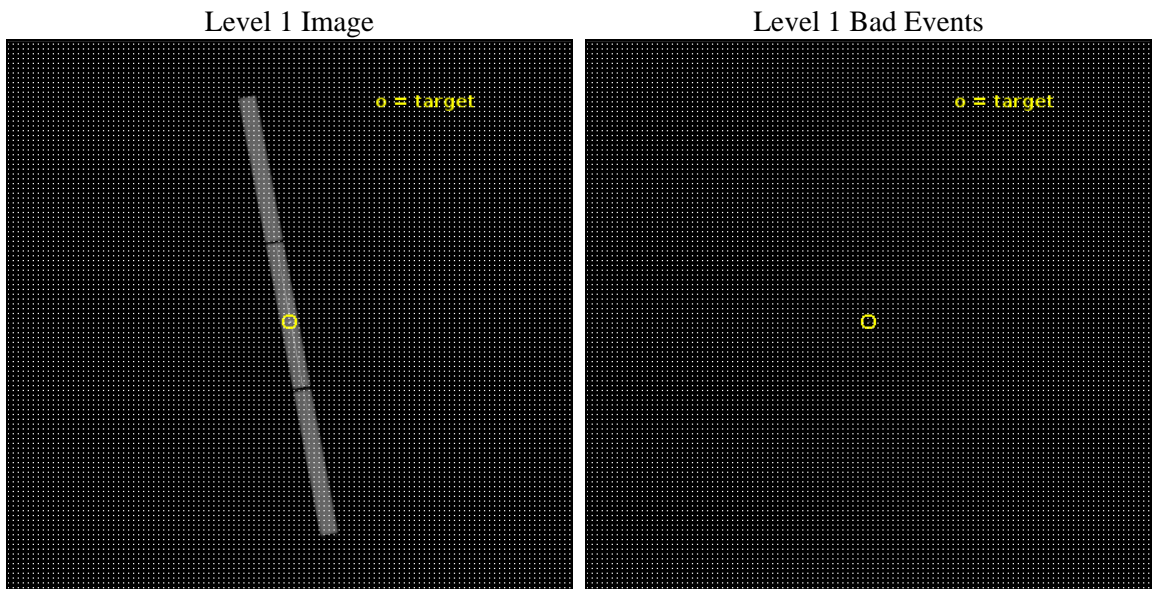
seq_num	790297	Sequence number
obs_id	19857	Observation id
title	AO-18 Calibration Observations of Mkn421	Proposal title
observer	CXC Calibration	Principal investigator
object	MKN421	Source name
ra_targ	166.113333	Observer's specified target RA [deg]
dec_targ	38.208806	Observer's specified target Dec [deg]
ra_nom	166.1189531963	Nominal RA [deg]
dec_nom	38.200006232499	Nominal Dec [deg]
roll_nom	259.69091741117	Nominal Roll [deg]
revision	1	Processing version of data
ontime	10162.875591993	[s]
livetime	10054.271641992	Ontime multiplied by DTCOR
l2events	1027889	Number of level 2 events



2 OBI

2.1 OBI

2.1.1 Images



2.1.2 Parameters

obi_num	0	Obi number	sched_exp_time	10000.000000	[s] Scheduled observation exposure time
ascdsver	10.6	Processing system revision	ontime	10162.875591993	[s]
caldsver	4.7.5	 	l1events	1277965	Number of level 1 events
date	2017-06-23T15:00:55	Date and time of file creation	tgmethod	TGDETECT	Method used to create src1a file
revision	1	Processing version of data	zo_pos	(32877.67, 33011.32)	src1a sky pixel position

2.1.3 Events

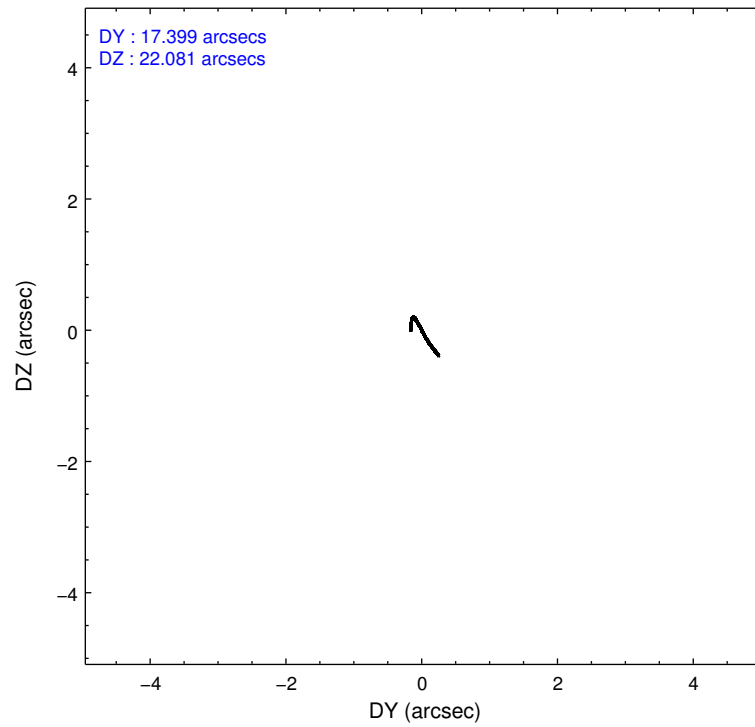
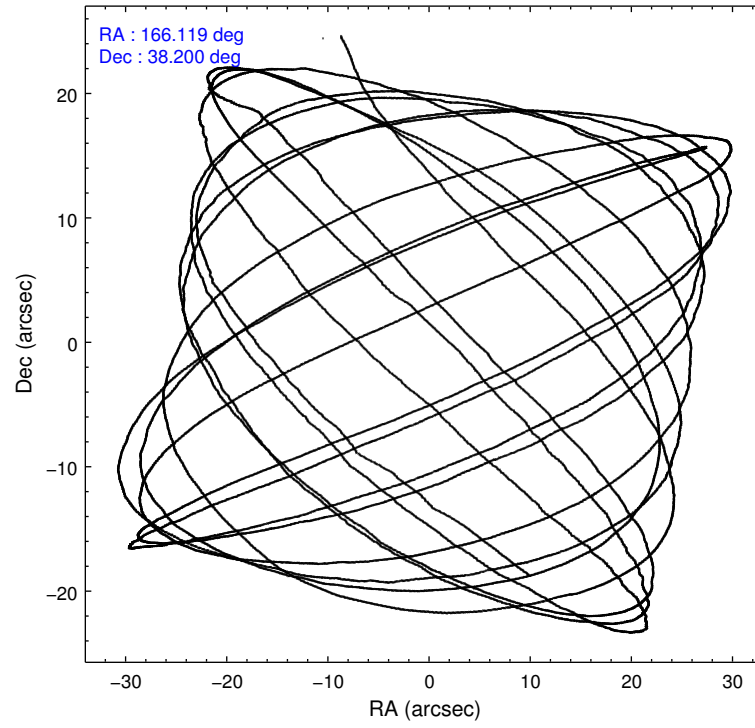
Level 1 Events

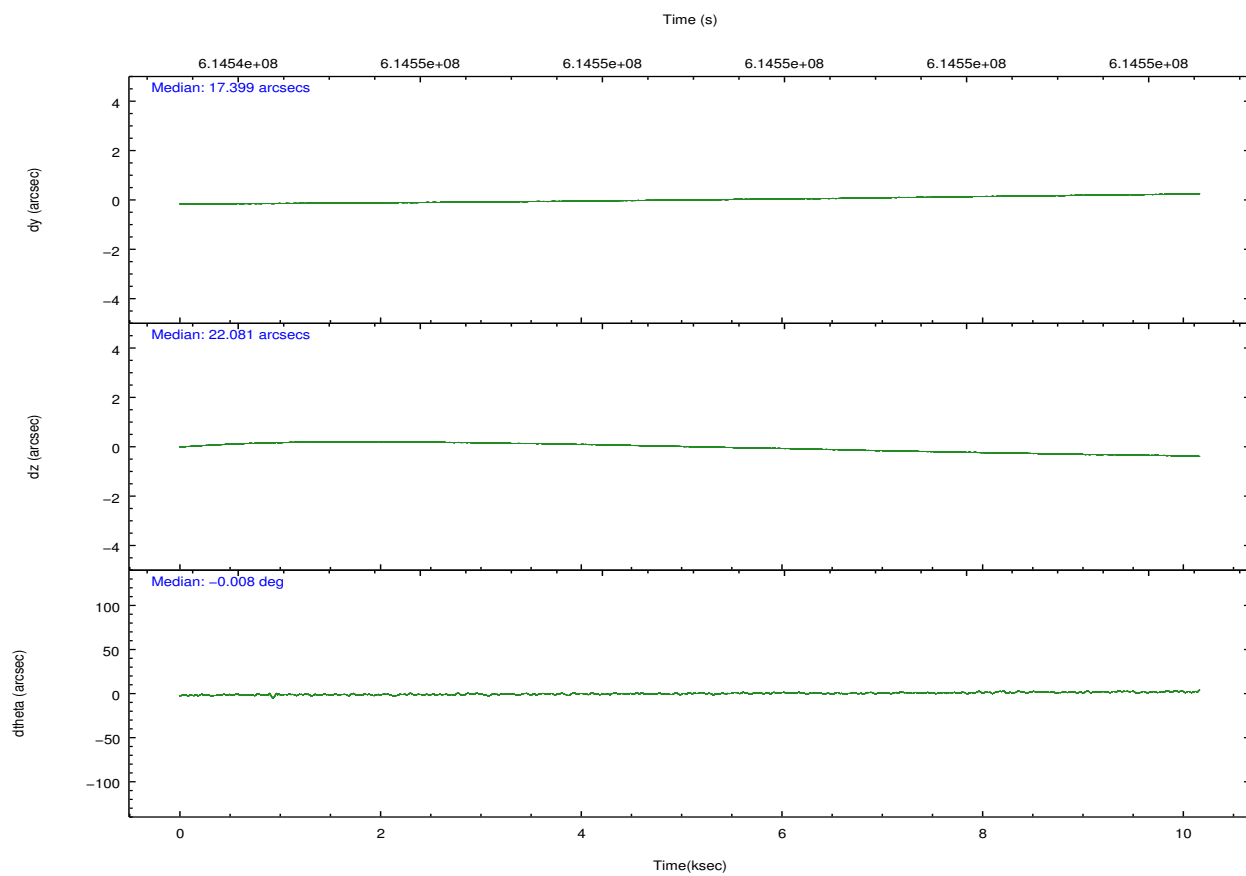
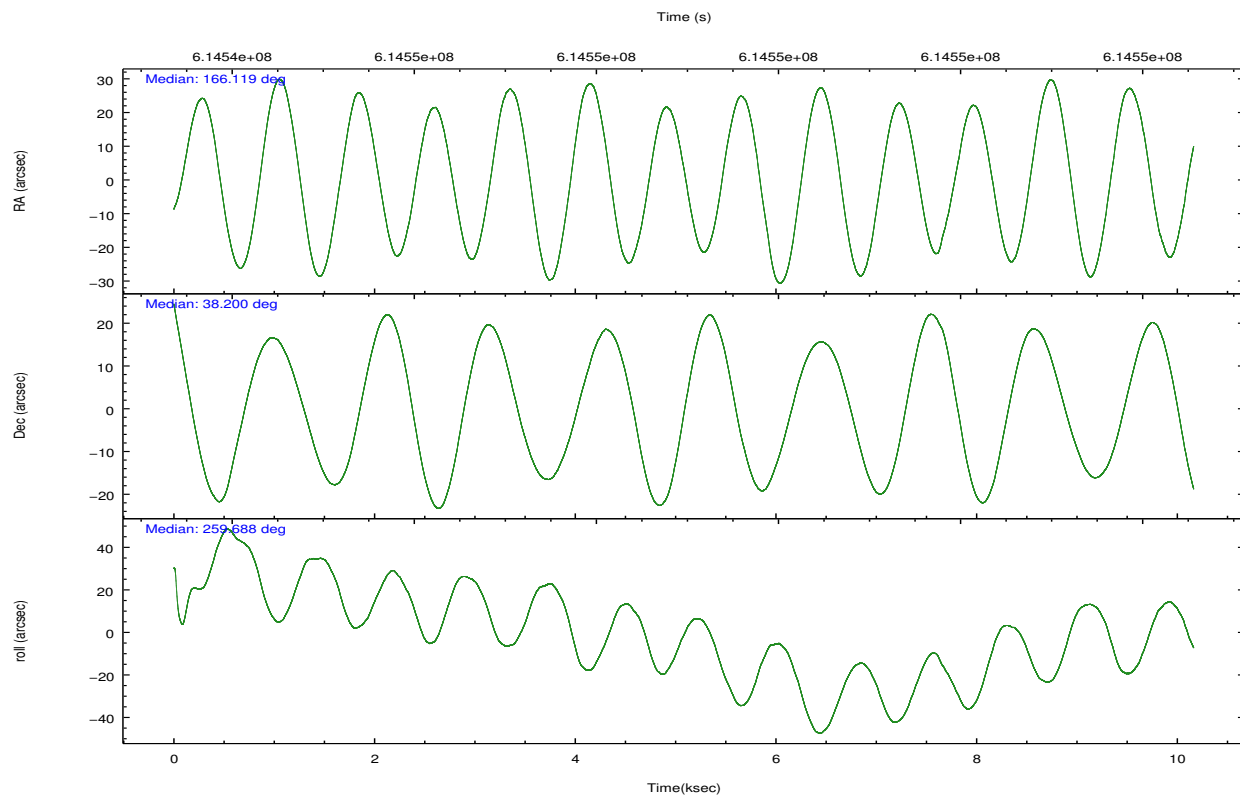
	segment 1	segment 2	segment 3
level 1 events	375799	525299	376867
rejected events	11601	14145	11611
rejected %	3%	2%	3%

2.2 Compared Parameters

Parameter	Planned	Actual	Parameter	Planned	Actual
Instrument	HRC	HRC	Obspar format version number	7	7
Detector	HRC-S	HRC-S	Obspar file type	PREDICTED	ACTUAL
Grating	LETG	LETG	Obspar update status	NONE	UPDATED
Data mode	OBSERVING	OBSERVING			
Observation mode	POINTING	POINTING			
[deg] Pointing RA	166.104938	166.1189531963022			
[deg] Pointing Dec	38.226670	38.2000062324989			
[deg] Pointing Roll	259.632239	259.6909174111708			
[mm] SIM focus pos	-1.429586	-1.428180813131781			
[mm] SIM defocus	0.1037507710433287	0.1051558262725154			
[mm] SIM translation stage pos	250.455976	250.466033080201			
[mm] SIM translation stage offset	0	-0.01005468664627074			
[s] Observation start time (MET)	614544030.184000	614543567.15485			
Observation start date	2017-06-22T18:39:21	2017-06-22T18:32:47			
[s] Observation end time (MET)	614554030.184000	614554294.80548			
Observation end date	2017-06-22T21:26:01	2017-06-22T21:31:34			

2.3 Aspect



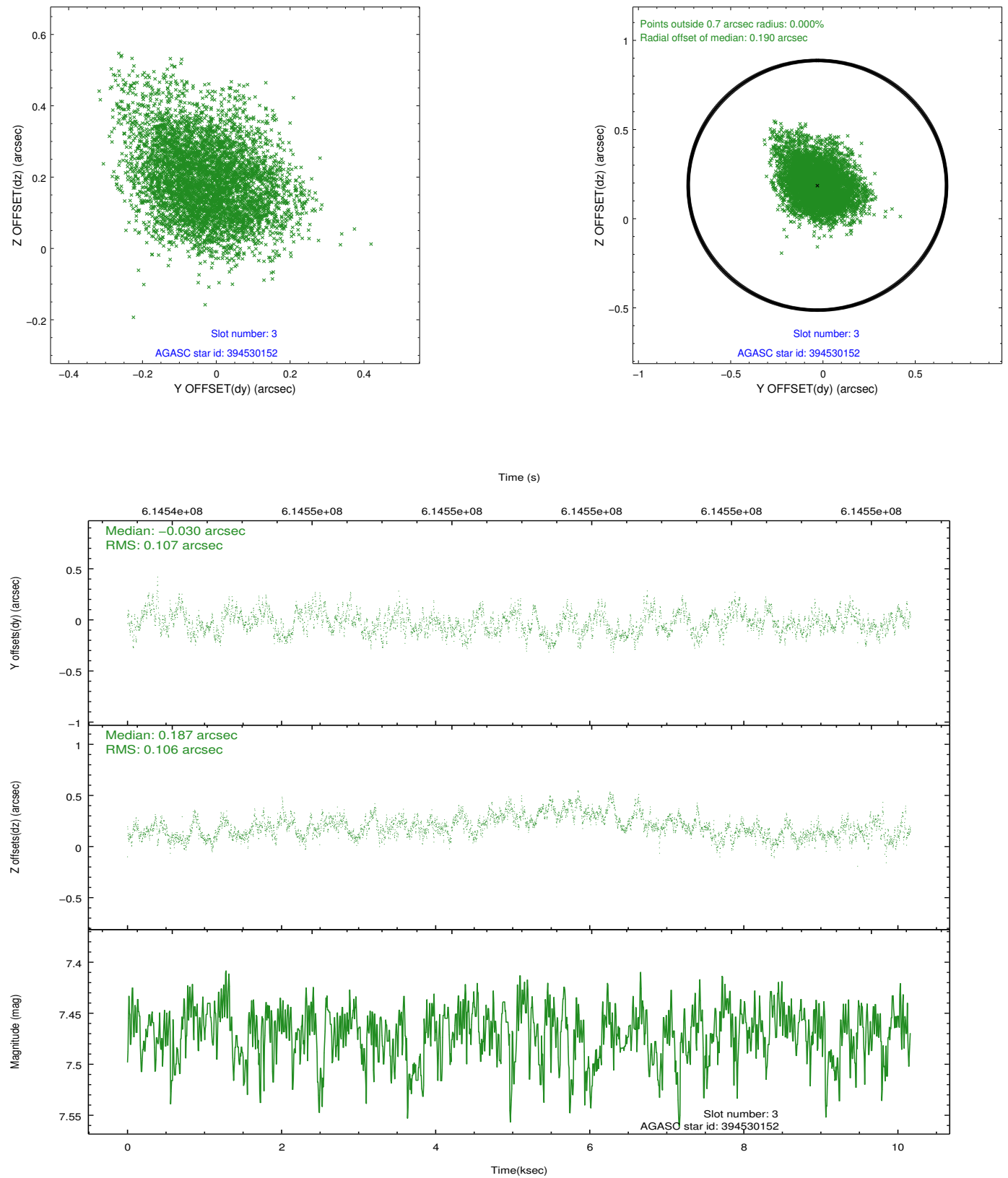


Slot Statistics

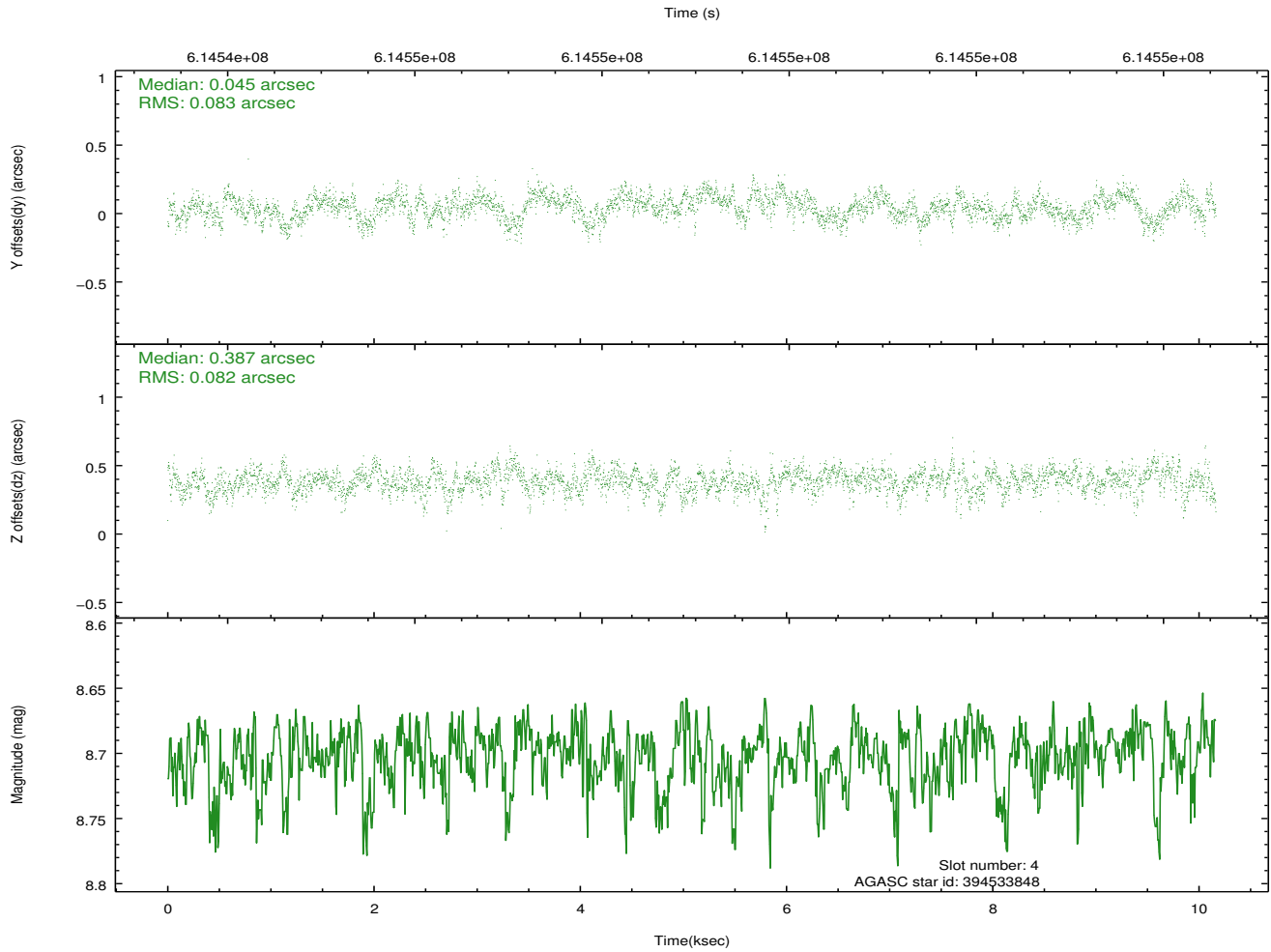
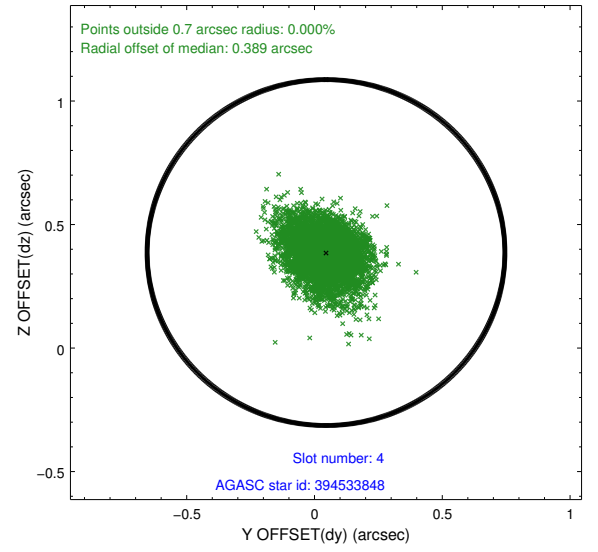
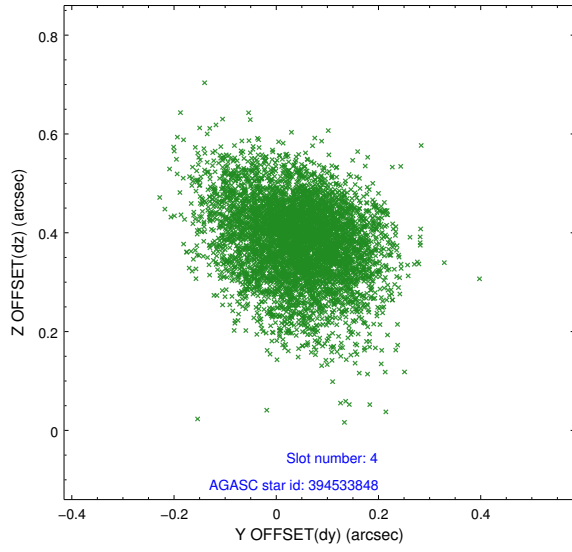
slot	status	used	id	mag	n_pts	med_dy	med_dz	dr1	dr2	ra	dec	mean_y	mean_z
0	FID		HRC-S-1	7.04	2478	-0.064	-0.156	0.009	0.017	0.000000	0.000000	-1171.96	-471.20
1	FID		HRC-S-2	7.01	2478	0.368	-0.119	0.005	0.010	0.000000	0.000000	1227.68	-463.80
2	FID		HRC-S-3	7.03	2479	0.086	-0.027	0.009	0.016	0.000000	0.000000	-1174.12	558.27
3	GUIDE	used	394530152	7.47	4959	-0.030	0.187	0.160	0.262	166.075805	38.868252	-2257.02	-495.65
4	GUIDE	used	394533848	8.70	4959	0.045	0.387	0.124	0.202	166.382906	38.276007	-317.40	735.16
5	GUIDE	used	394543960	9.73	4947	0.190	0.247	0.279	0.467	165.802757	37.787371	1709.45	-560.55
6	GUIDE	used	394546712	6.58	4958	-0.331	0.338	0.116	0.191	166.451462	38.394357	-770.78	852.02
7	GUIDE	used	394546720	6.41	4958	0.134	-1.160	0.134	0.223	166.130115	38.241361	-64.57	59.81

2.4 Star Slots

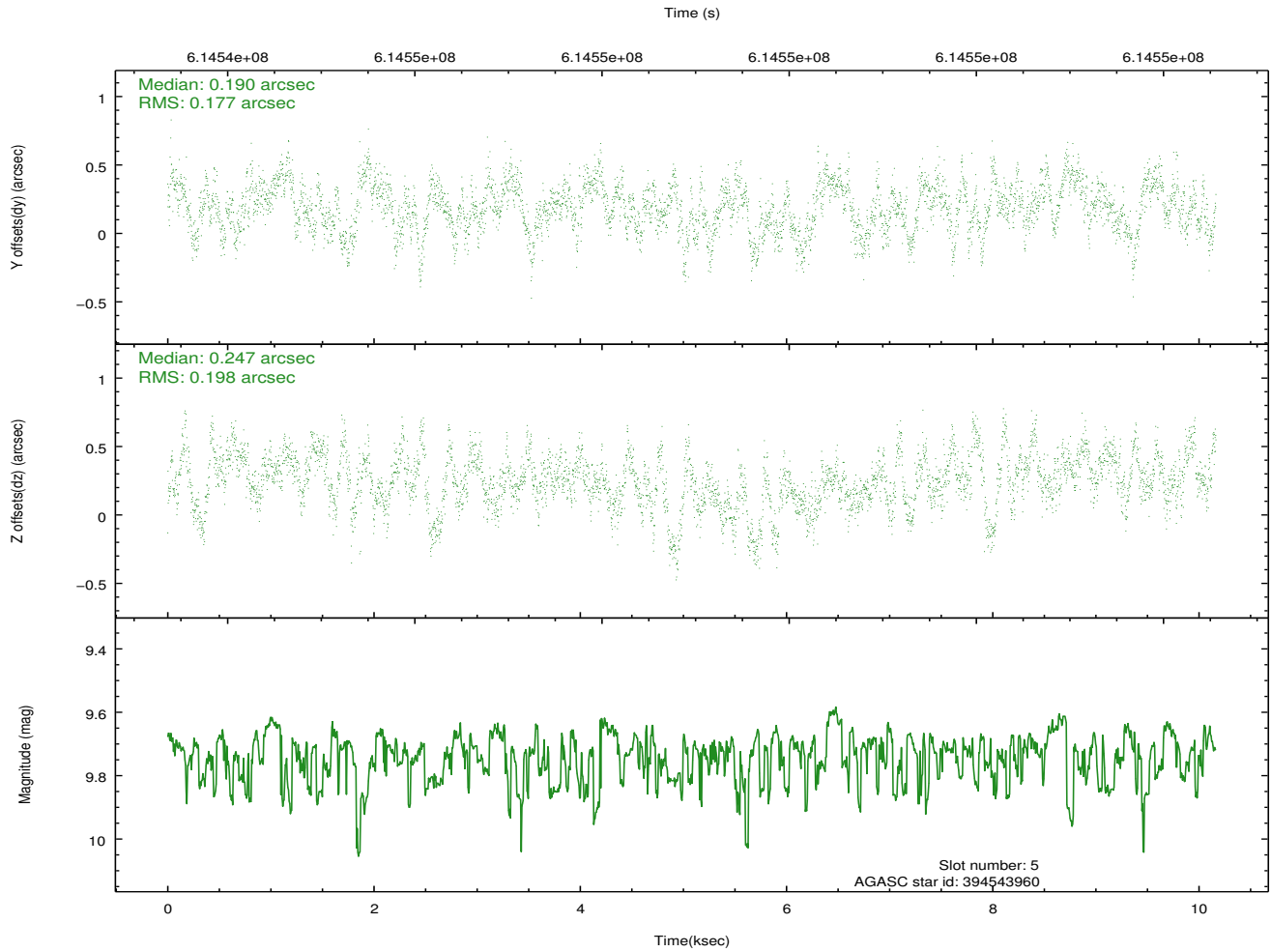
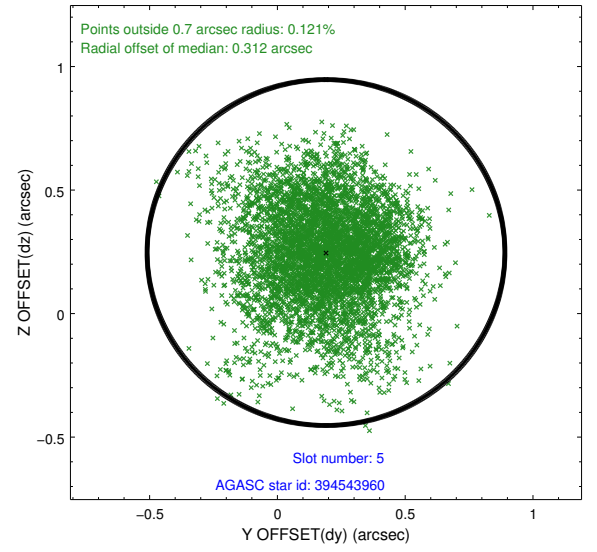
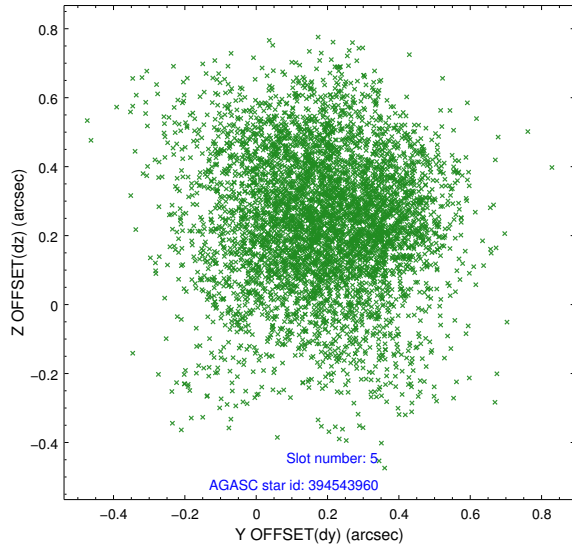
2.4.1 Slot 3



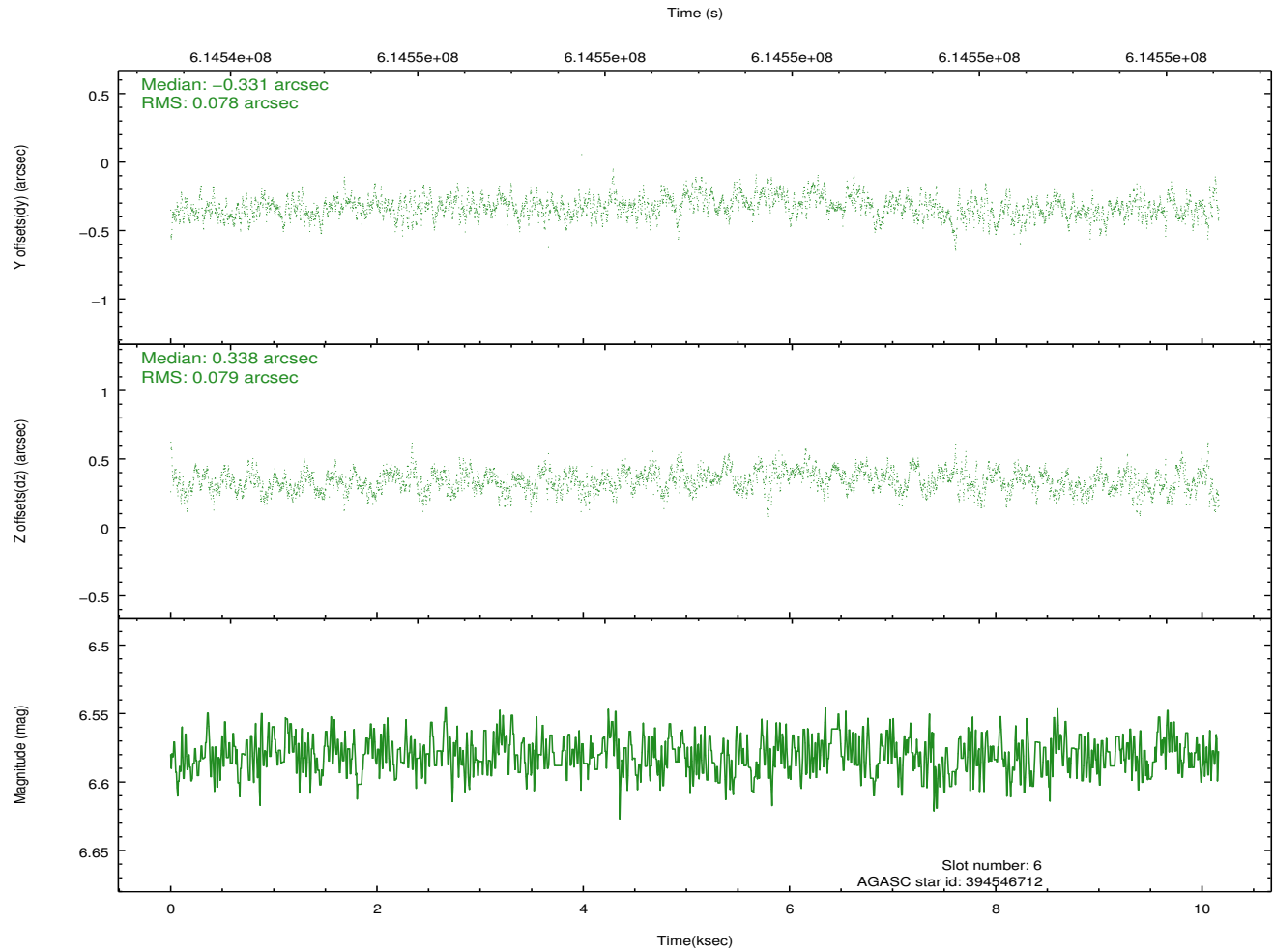
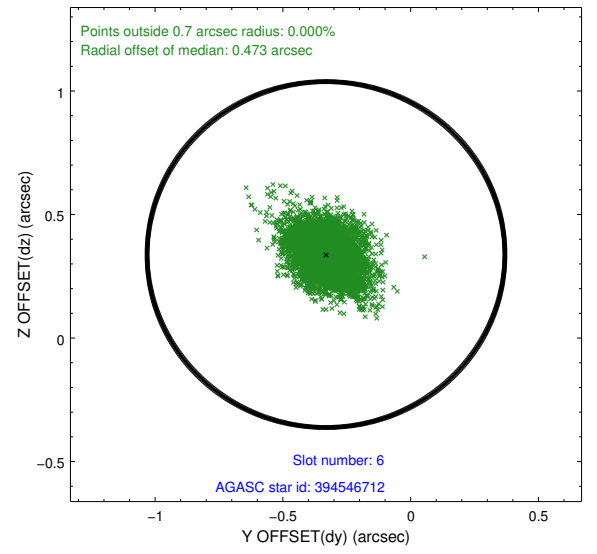
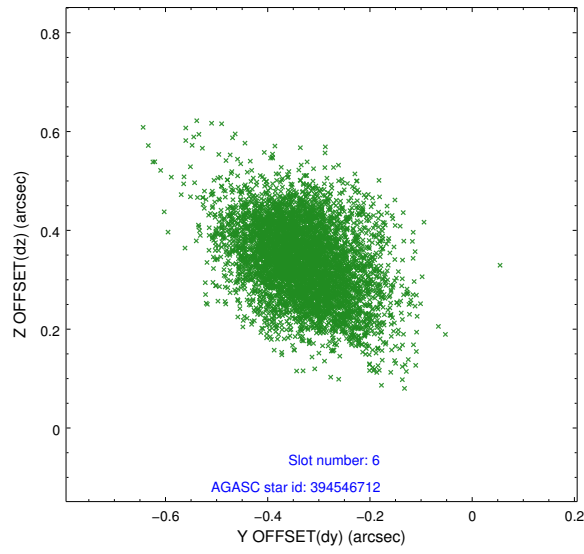
2.4.2 Slot 4



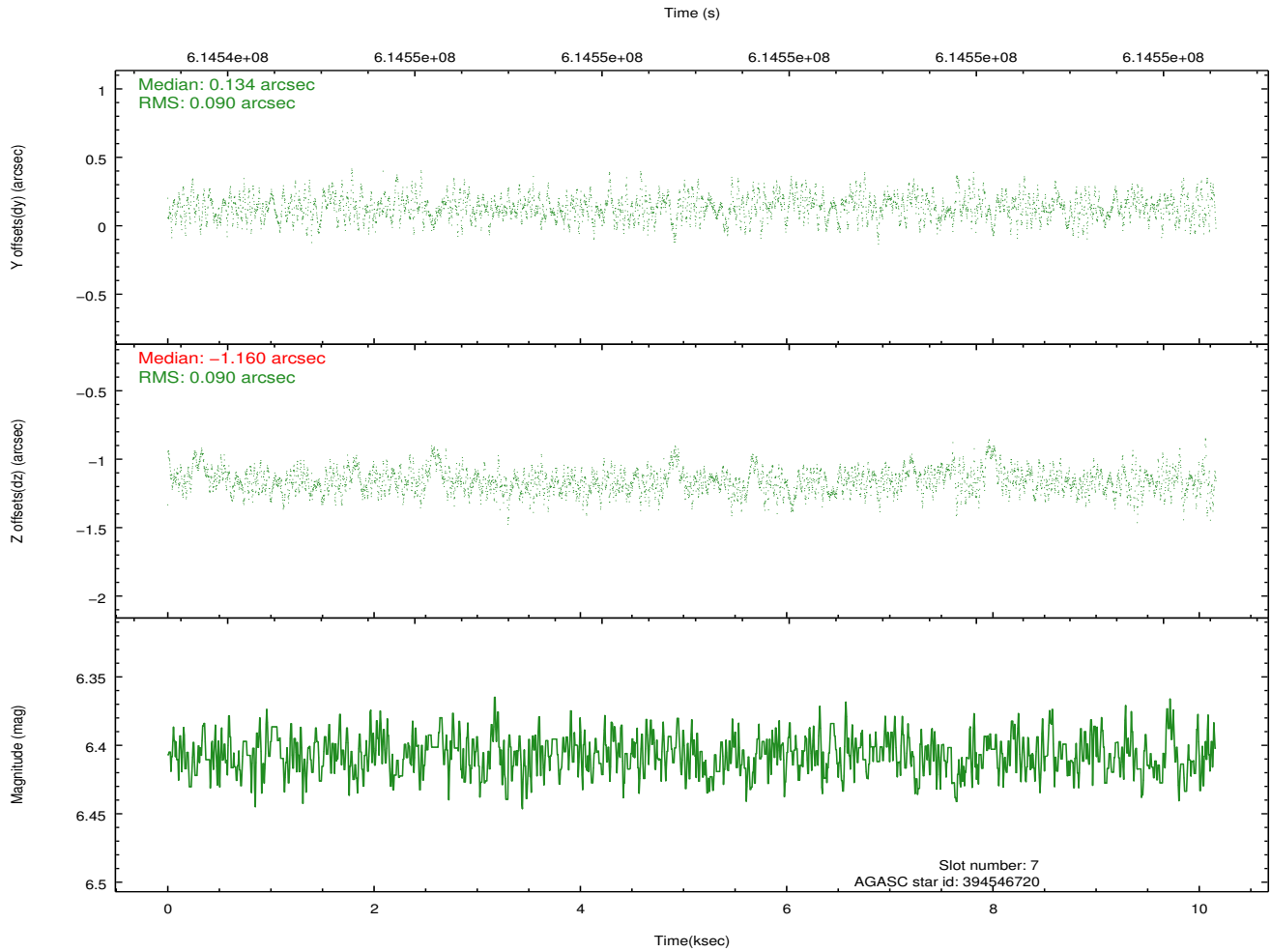
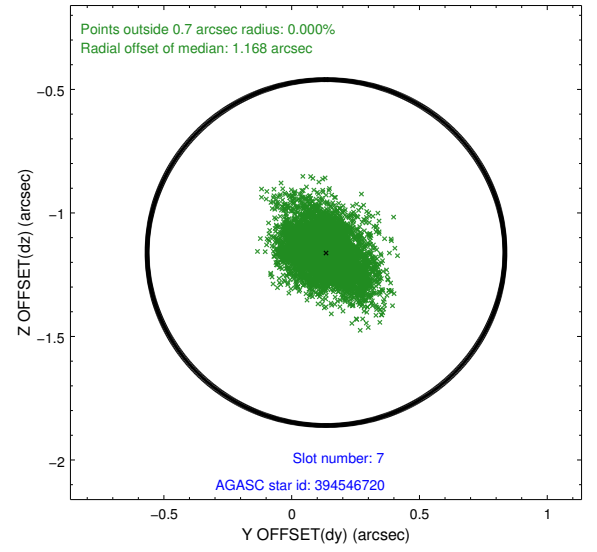
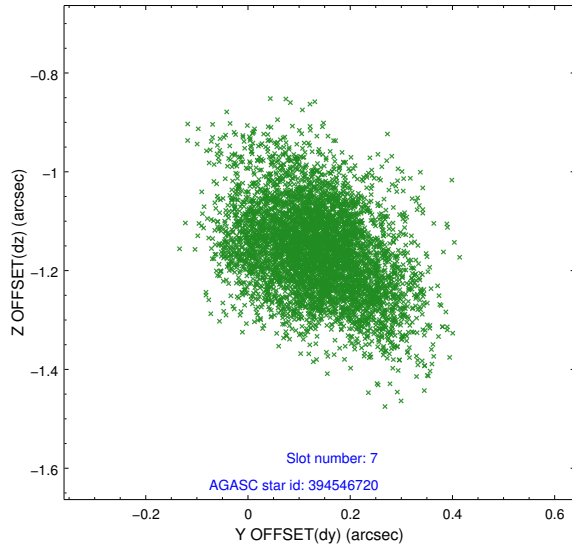
2.4.3 Slot 5



2.4.4 Slot 6

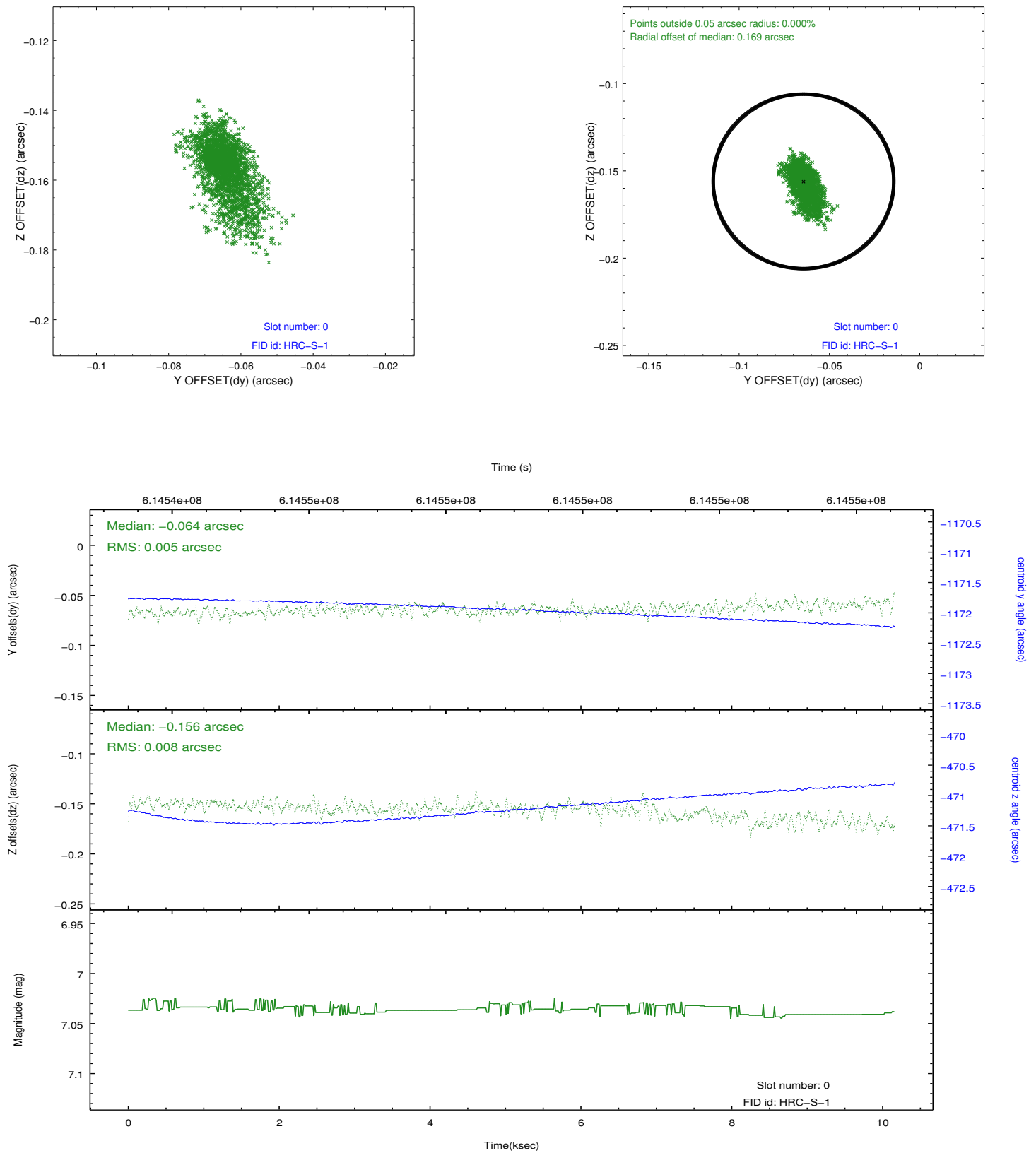


2.4.5 Slot 7

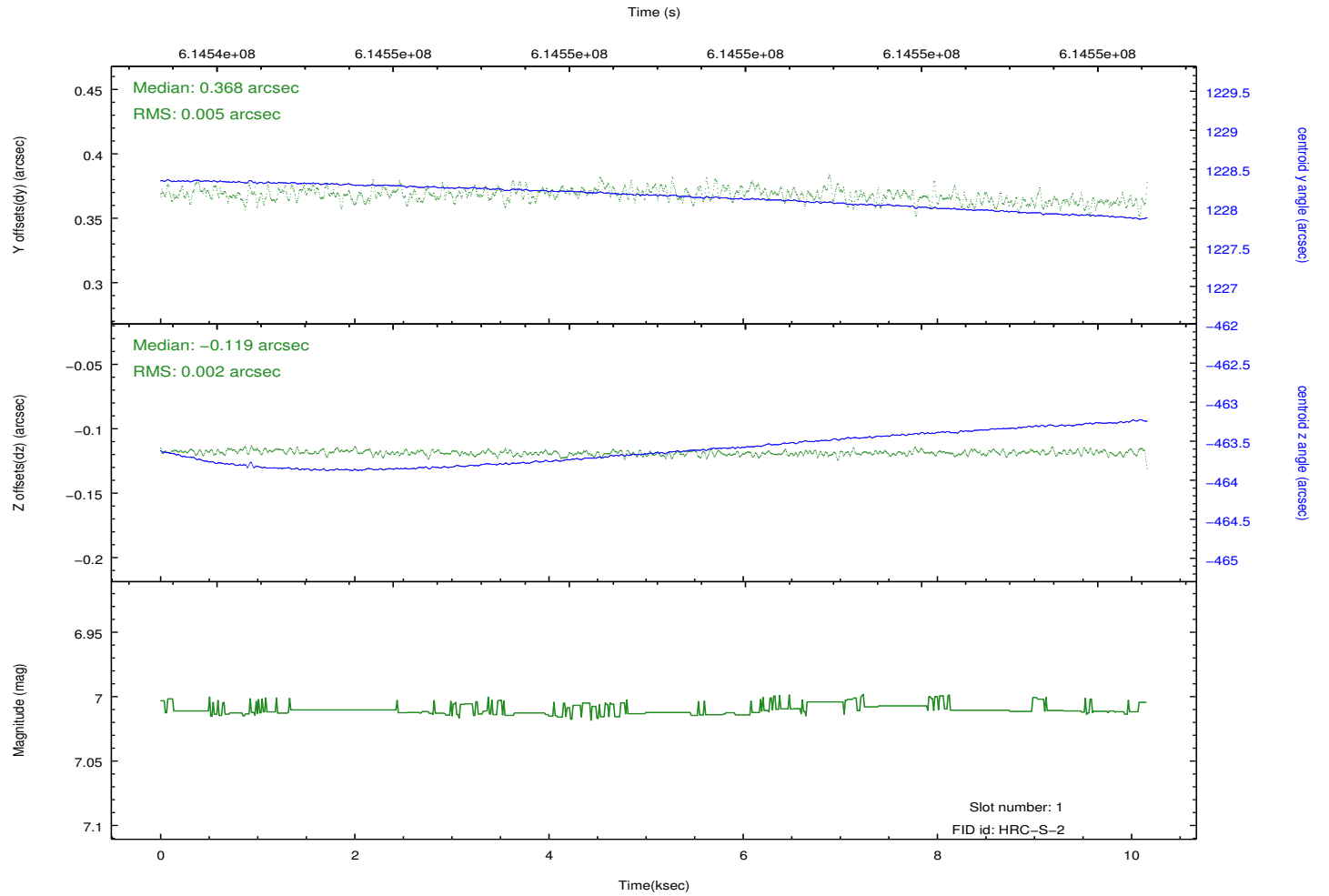
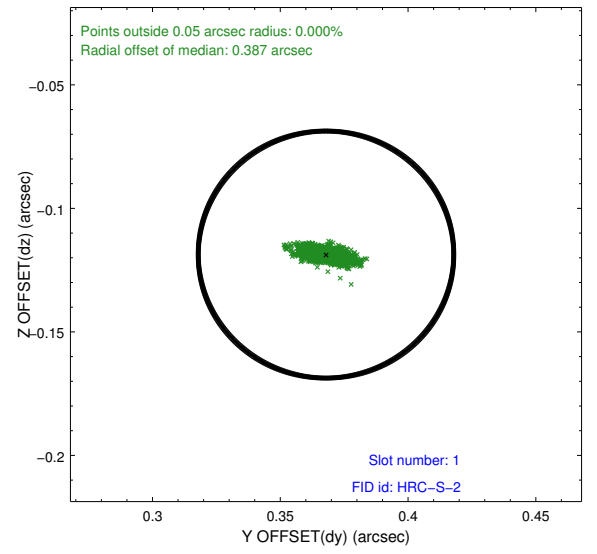
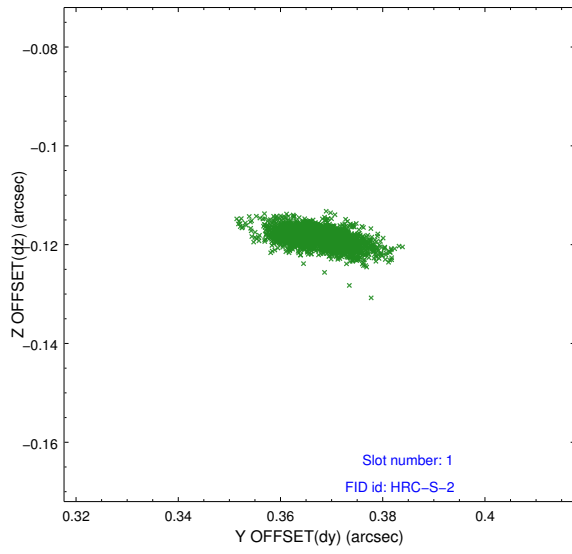


2.5 FID Slots

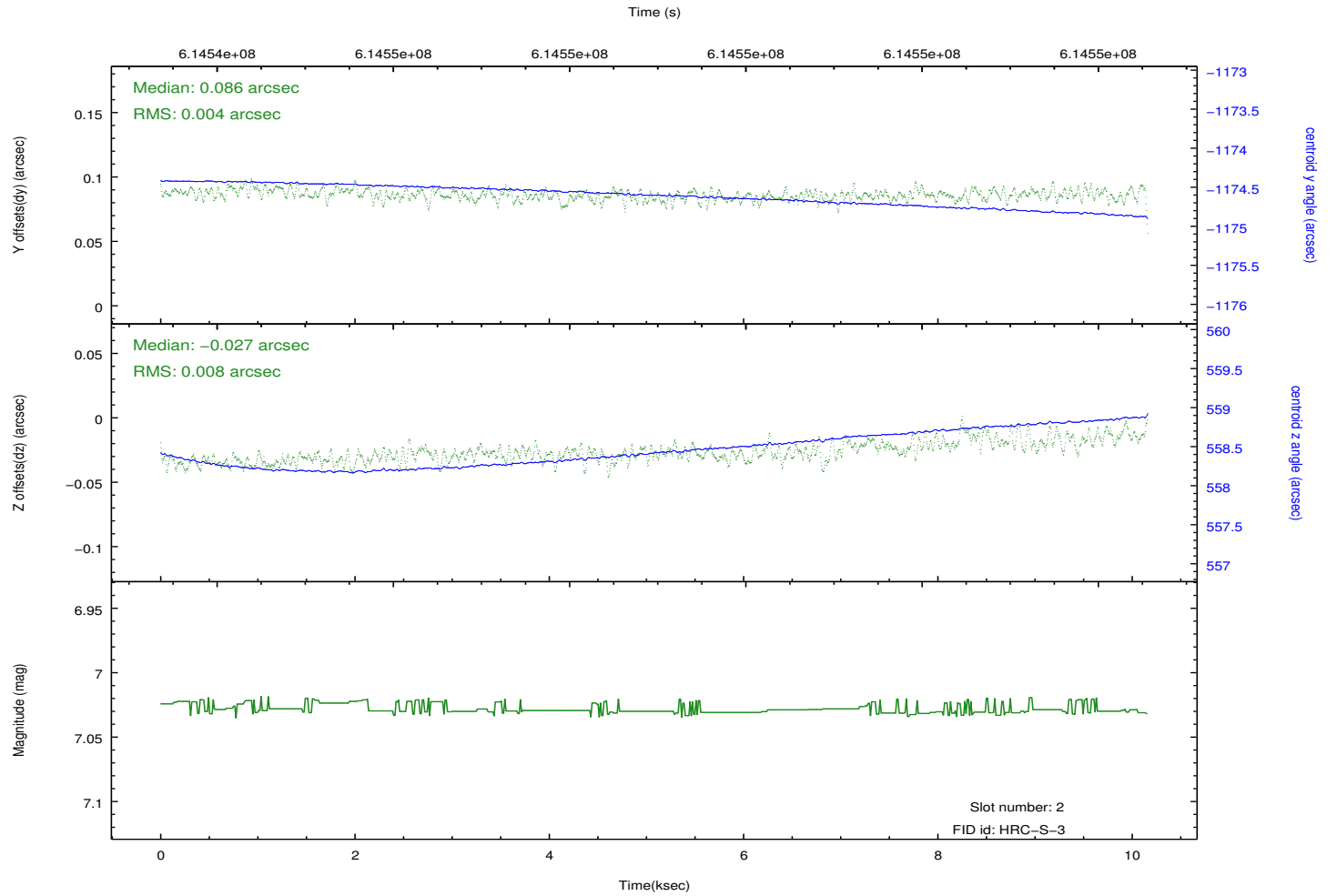
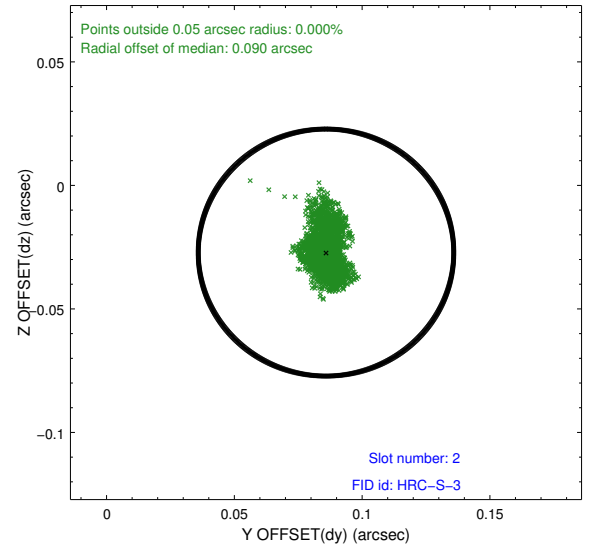
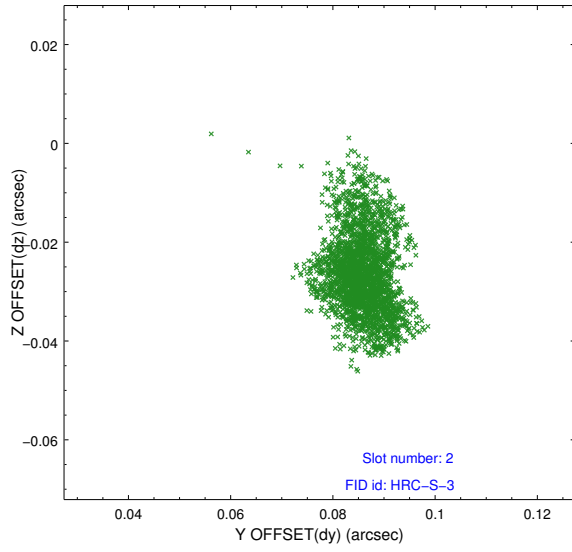
2.5.1 Slot 0



2.5.2 Slot 1

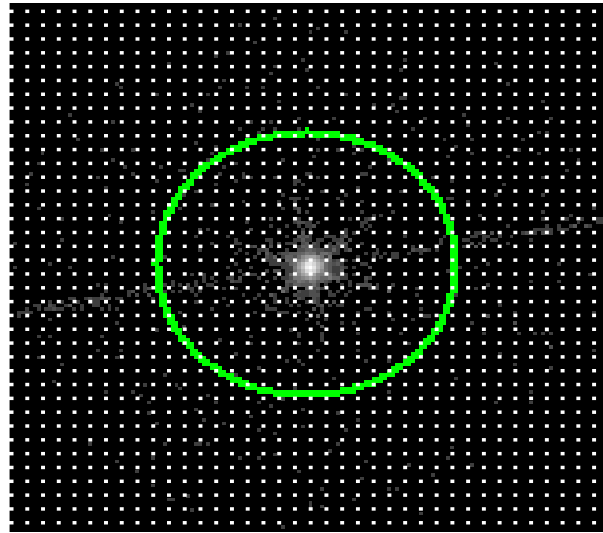


2.5.3 Slot 2

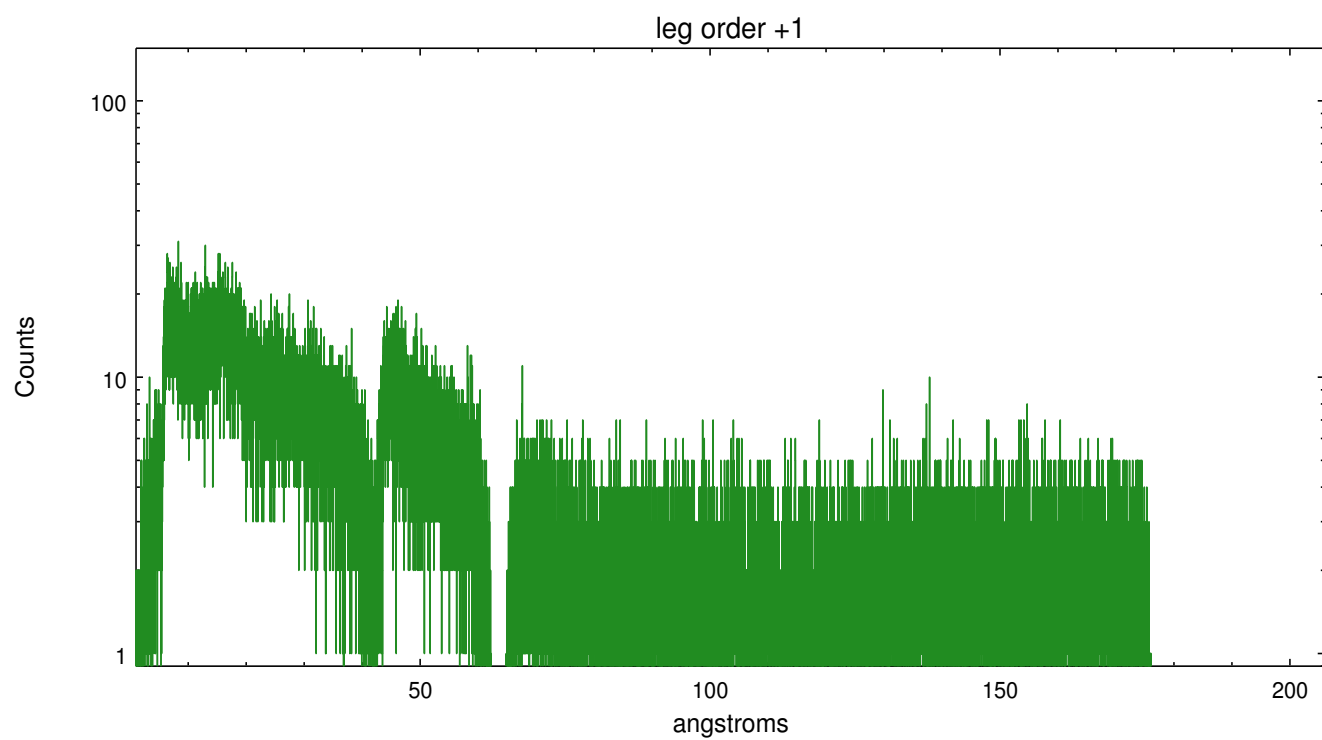
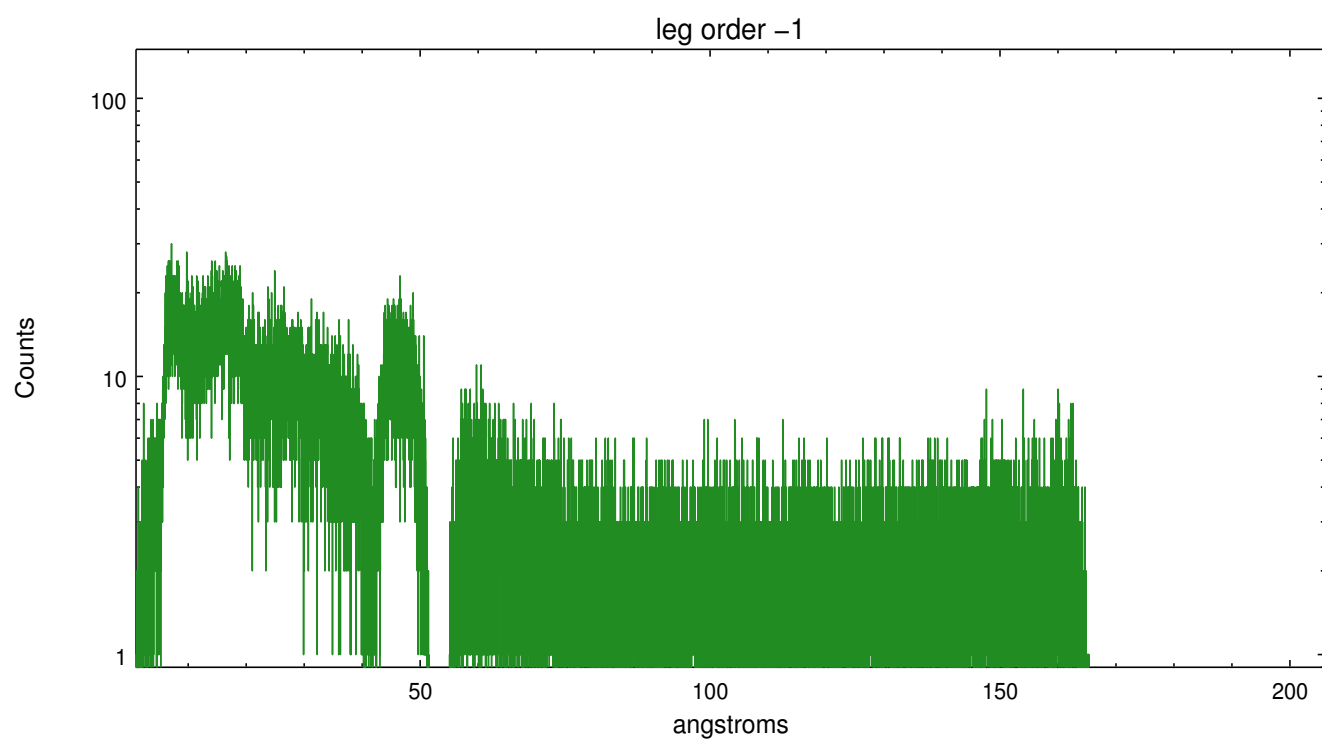


3 Gratings

3.1 LETG Arm



LETG Zero Order



A Summary

A.1 Status

V&V Scientist	David Huenemoerder
V&V Date (YYYY-MM-DD)	2017.06.23
V&V Edition	1
V&V Disposition and Status	OK
V&V Charge Time	10.162875591993

A.2 Comments