

V&V Reference Report

L2 ASCDS Version : 10.4.3.1

Observation 18430 - L2 Version 1
Chandra X-Ray Center

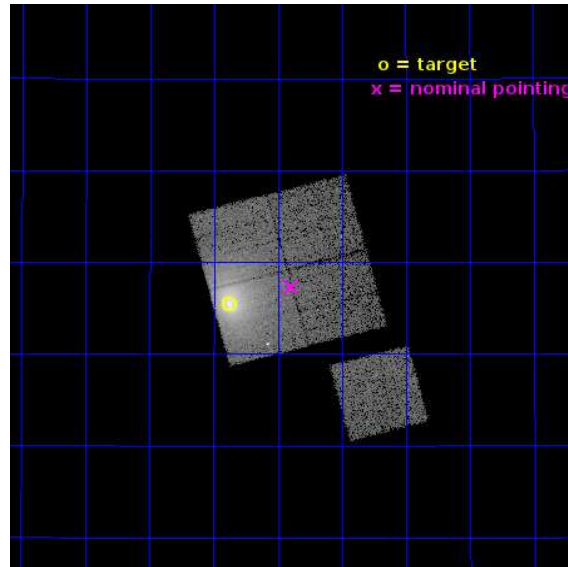
L2 Processing Date : Apr 10 2016

Contents

1	Front	2
2	OBI	3
2.1	OBI	3
2.1.1	Images	3
2.1.2	Bias	3
2.1.3	Parameters	4
2.1.4	Events	4
2.2	Compared Parameters	5
2.3	Aspect	6
2.4	Star Slots	9
2.4.1	Slot 3	9
2.4.2	Slot 4	10
2.4.3	Slot 5	11
2.4.4	Slot 6	12
2.4.5	Slot 7	13
2.5	FID Slots	14
2.5.1	Slot 0	14
2.5.2	Slot 1	15
2.5.3	Slot 2	16
A	Summary	17
A.1	Status	17
A.2	Comments	17

1 Front

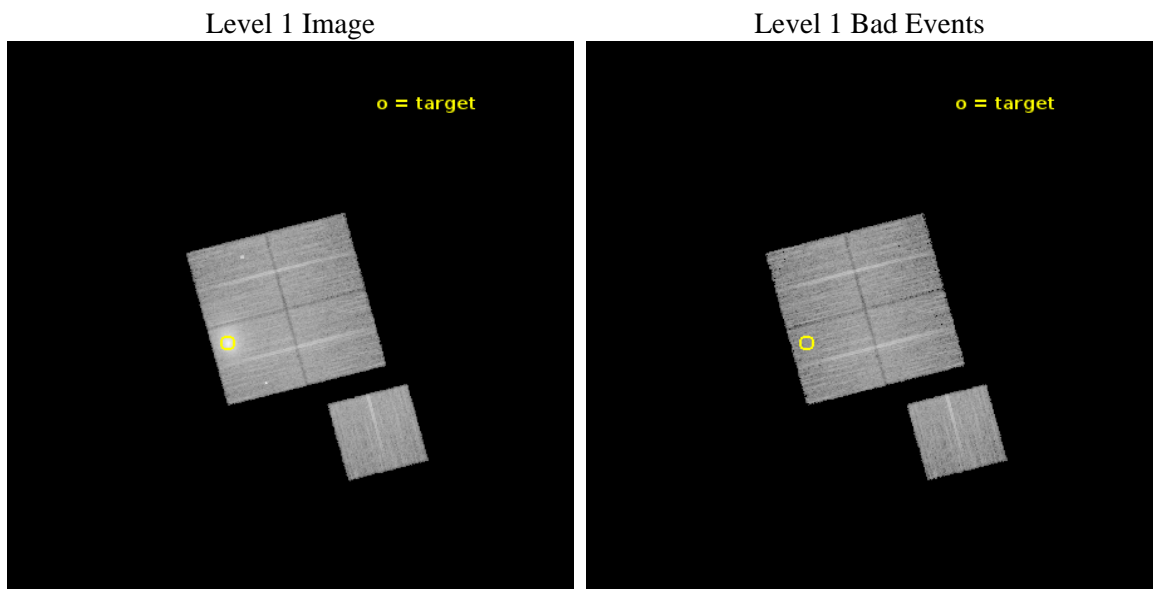
seq_num	890123	Sequence number
obs_id	18430	Observation id
title	AO-17 Calibration Observations of A1795	Proposal title
observer	Dr. CXC Calibration	Principal investigator
object	A1795	Source name
dtcycle	0	
cycle	P	events from which exps? Prim/Second/Both
ra_targ	207.219583	Observer's specified target RA [deg]
dec_targ	26.590833	Observer's specified target Dec [deg]
ra_nom	207.09844320474	Nominal RA [deg]
dec_nom	26.622308716022	Nominal Dec [deg]
roll_nom	165.20501651113	Nominal Roll [deg]
revision	1	Processing version of data
ontime	15052.295721054	Sum of GTIs [s]
livetime	14855.62639612	Livetime [s]
ontime0	15052.172601104	Sum of GTIs [s]
ontime1	15052.213641047	Sum of GTIs [s]
ontime2	15049.113640904	Sum of GTIs [s]
ontime3	15052.295721054	Sum of GTIs [s]
ontime6	15052.131561041	Sum of GTIs [s]
l2events	122656	Number of level 2 events



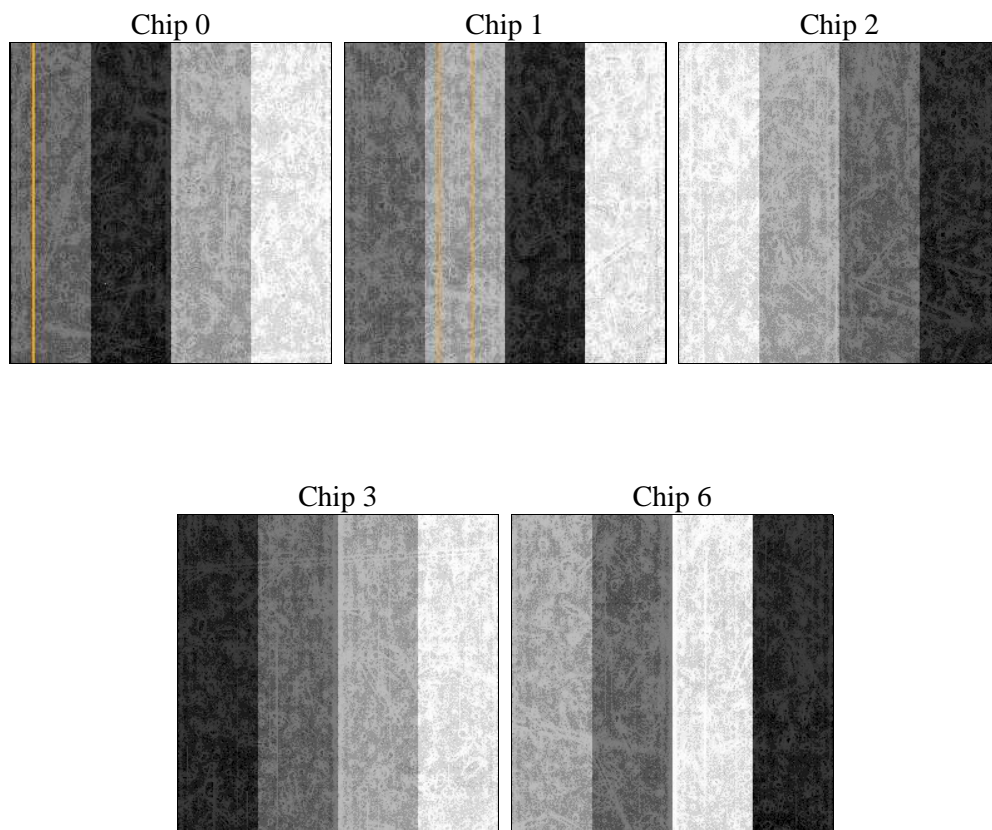
2 OBI

2.1 OBI

2.1.1 Images



2.1.2 Bias



2.1.3 Parameters

obi_num	0	Obi number	sched_exp_time	15000.000000	[s] Scheduled observation exposure time
ascdsver	10.4.3.1	Processing system revision	ontime	15052.295721054	Sum of GTIs [s]
caldbver	4.7.1	 	ontime0	15052.172601104	Sum of GTIs [s]
date	2016-04-10T13:15:21	Date and time of file creation	ontime1	15052.213641047	Sum of GTIs [s]
revision	1	Processing version of data	ontime2	15049.113640904	Sum of GTIs [s]
			ontime3	15052.295721054	Sum of GTIs [s]
			ontime6	15052.131561041	Sum of GTIs [s]
			l1events	539678	Number of level 1 events

2.1.4 Events

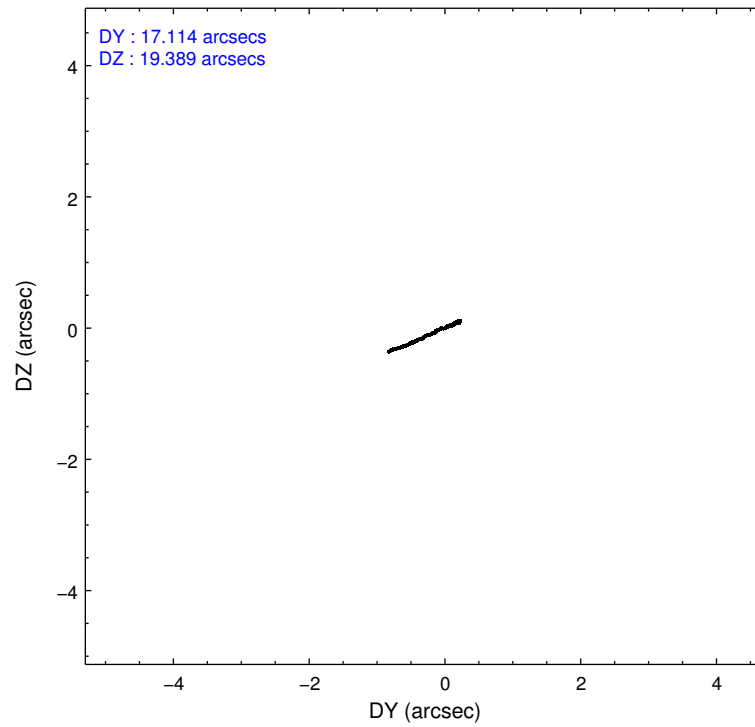
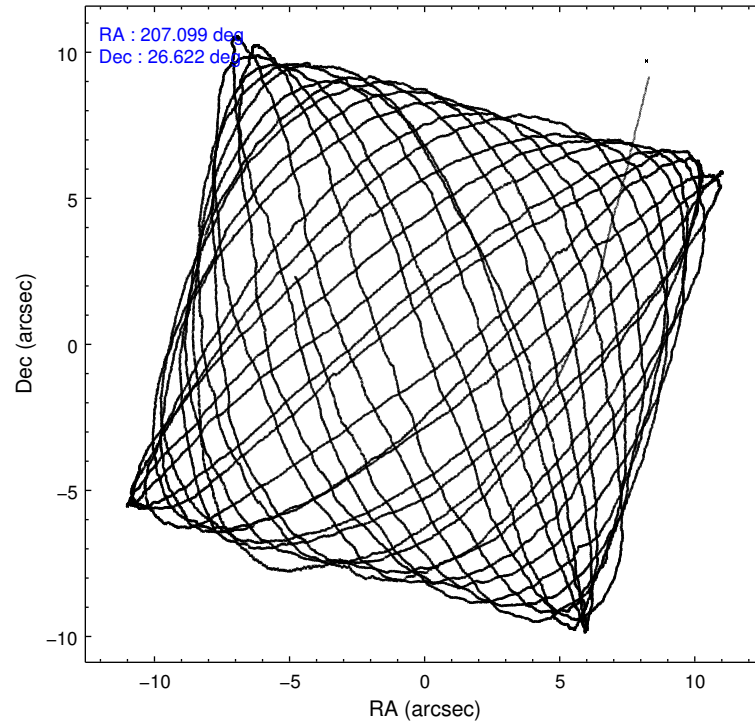
	ccd 0	ccd 1	ccd 2	ccd 3	ccd 6
level 1 events	85938	101590	96329	159754	96067
rejected events	74429	76985	85048	84153	85360
rejected %	86%	75%	88%	52%	88%

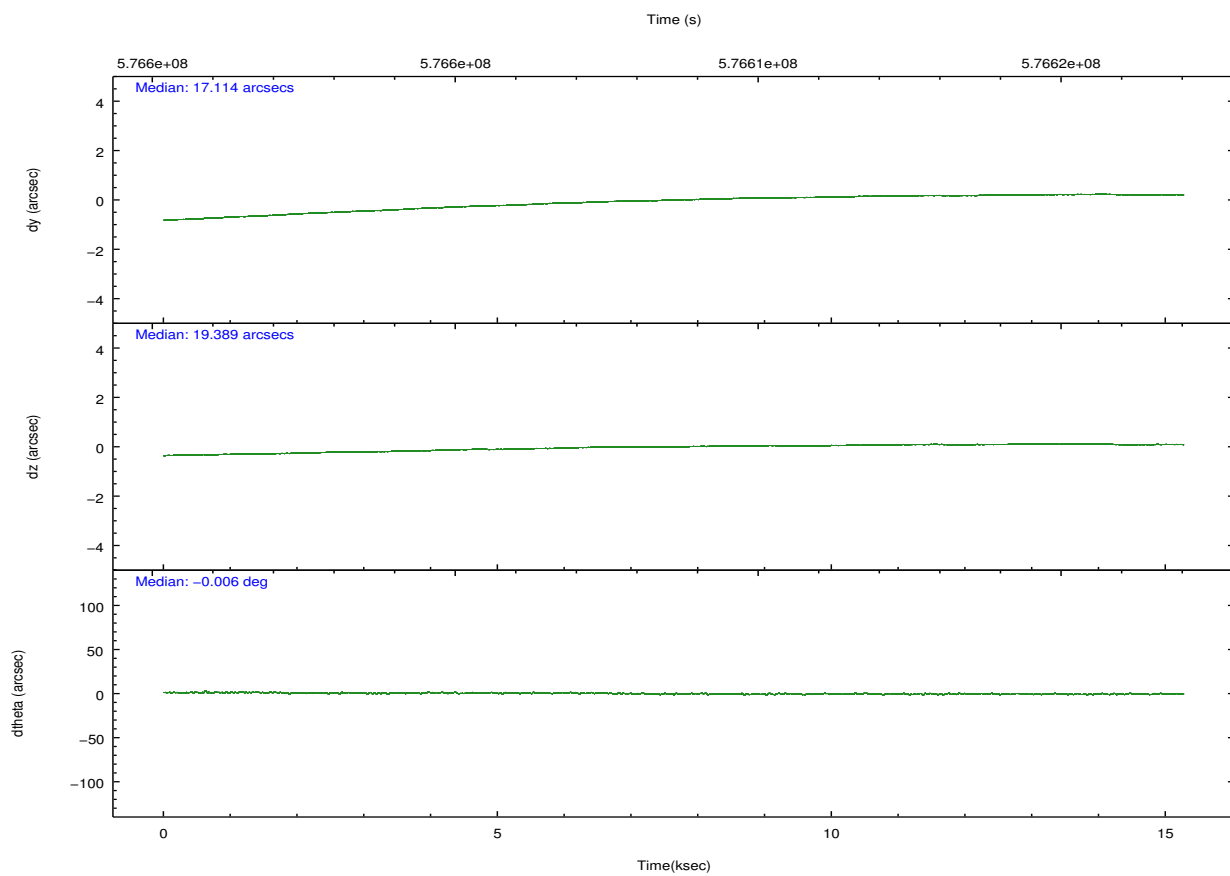
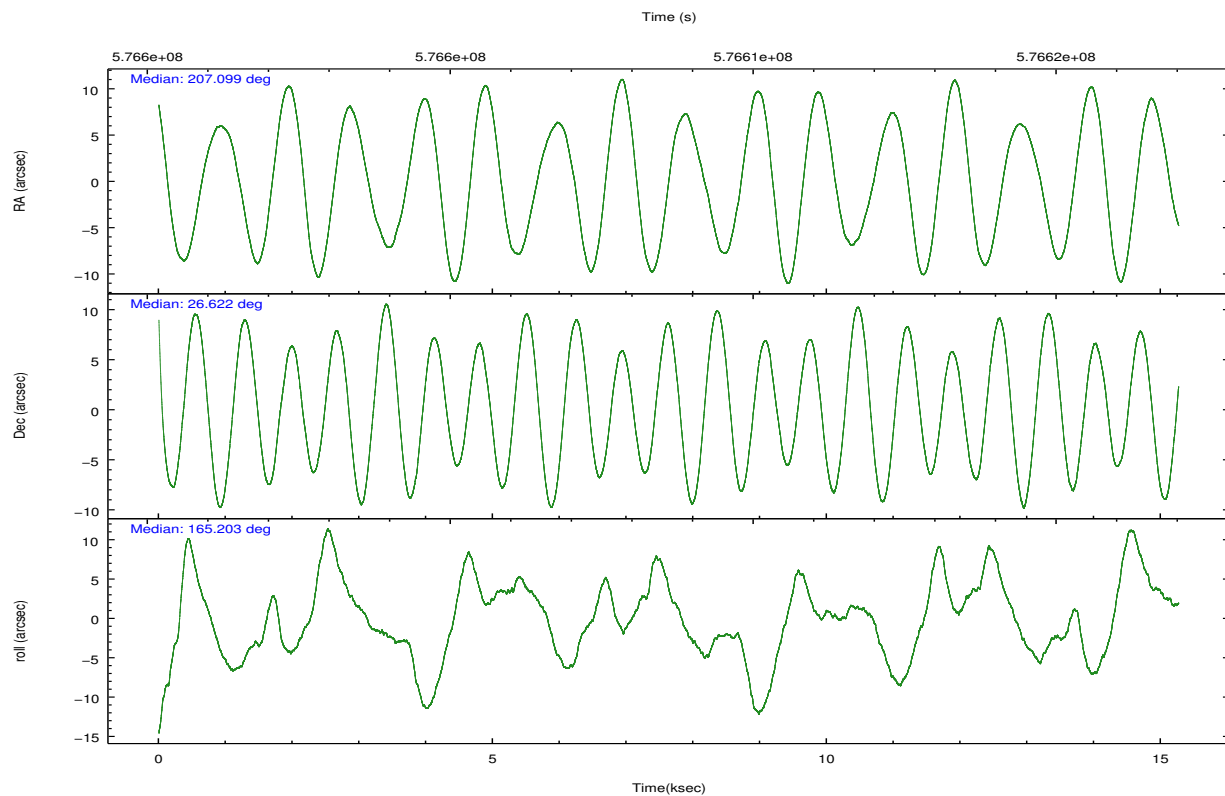
	ccd 0	ccd 1	ccd 2	ccd 3	ccd 6
grade 0 events	4381	14063	4548	55171	3524
	5%	13%	4%	34%	3%
grade 1 events	41	90	66	304	35
	0%	0%	0%	0%	0%
grade 2 events	2745	4499	2658	9508	2514
	3%	4%	2%	5%	2%
grade 3 events	1123	1520	1070	3315	1036
	1%	1%	1%	2%	1%
grade 4 events	1053	1522	1034	3416	1052
	1%	1%	1%	2%	1%
grade 5 events	4088	4258	3752	4772	4358
	4%	4%	3%	2%	4%
grade 6 events	2209	3009	1976	4215	2583
	2%	2%	2%	2%	2%
grade 7 events	70298	72629	81225	79053	80965
	81%	71%	84%	49%	84%

2.2 Compared Parameters

Parameter	Planned	Actual	Parameter	Planned	Actual
Instrument	ACIS	ACIS	Obspar format version number	7	7
Detector	ACIS-01236	ACIS-01236	Obspar file type	PREDICTED	ACTUAL
Grating	NONE	NONE	Obspar update status	NONE	UPDATED
Data mode	VFAINT	VFAINT	Number of optional ACIS chips dropped	0	0
Observation mode	POINTING	POINTING	On-chip summing requested	N	N
[deg] Pointing RA	207.128219	207.0984432047421	Subarray requested	NONE	NONE
[deg] Pointing Dec	26.629676	26.62230871602173	Alternating exposures requested	N	N
[deg] Pointing Roll	164.982982	165.2050165111286	[s] Primary exposure time	0.000000	3.1
[s] Window start time (MET)	575856068.184000	575856068.184000			
[s] Window stop time (MET)	578361668.184000	578361668.184000			
[mm] SIM focus pos	-0.782348	-0.7809083437167272			
[mm] SIM defocus	0	0.001439871863259334			
[mm] SIM translation stage pos	-230.252463	-230.248423740357			
[mm] SIM translation stage offset	-3.34	-3.34402926257269			
[s] Observation start time (MET)	576601235.184000	576600253.34042			
Observation start date	2016-04-09T14:59:27	2016-04-09T14:44:13			
[s] Observation end time (MET)	576616235.184000	576616601.06635			
Observation end date	2016-04-09T19:09:27	2016-04-09T19:16:41			
Read mode	TIMED	TIMED			

2.3 Aspect



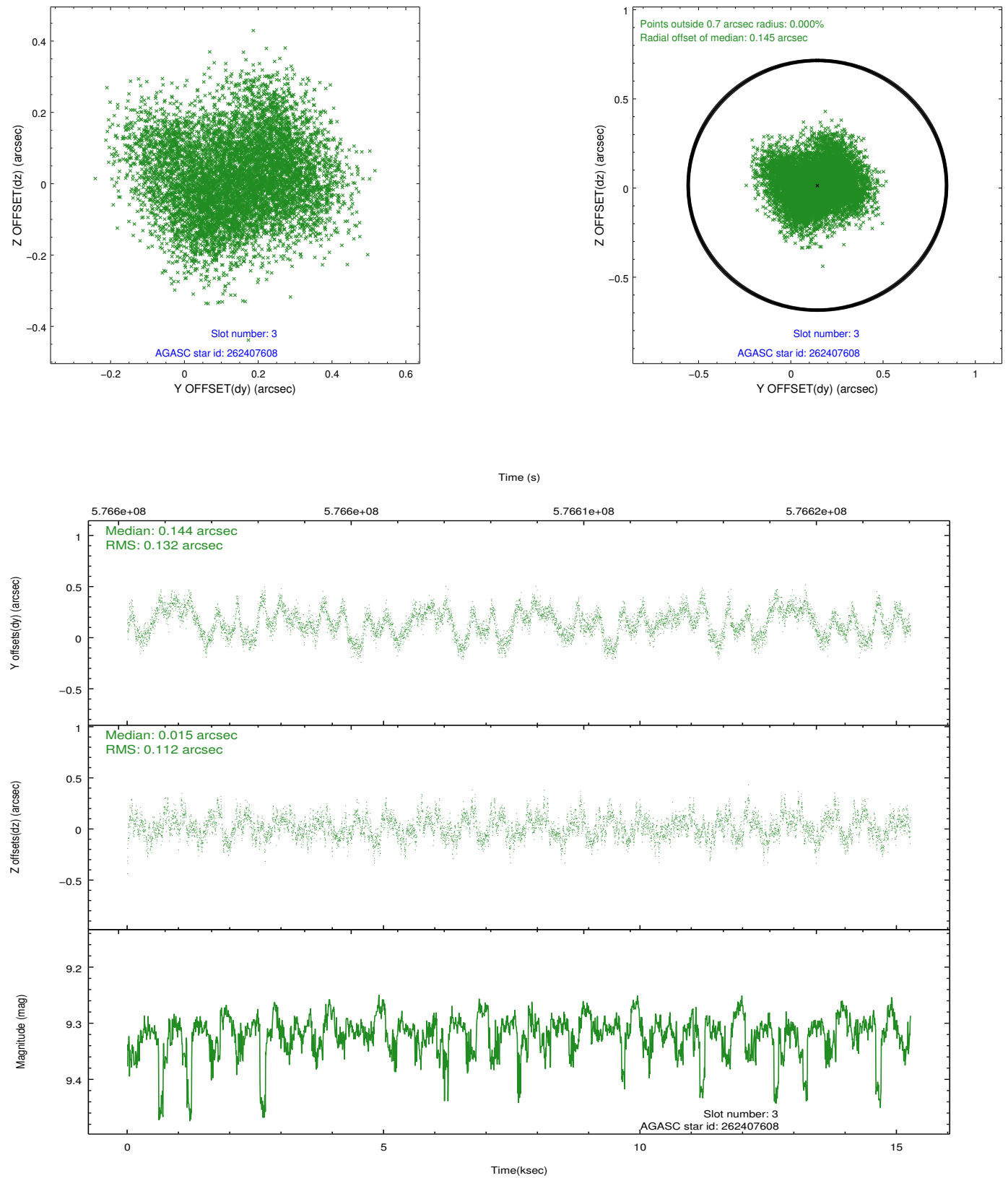


Slot Statistics

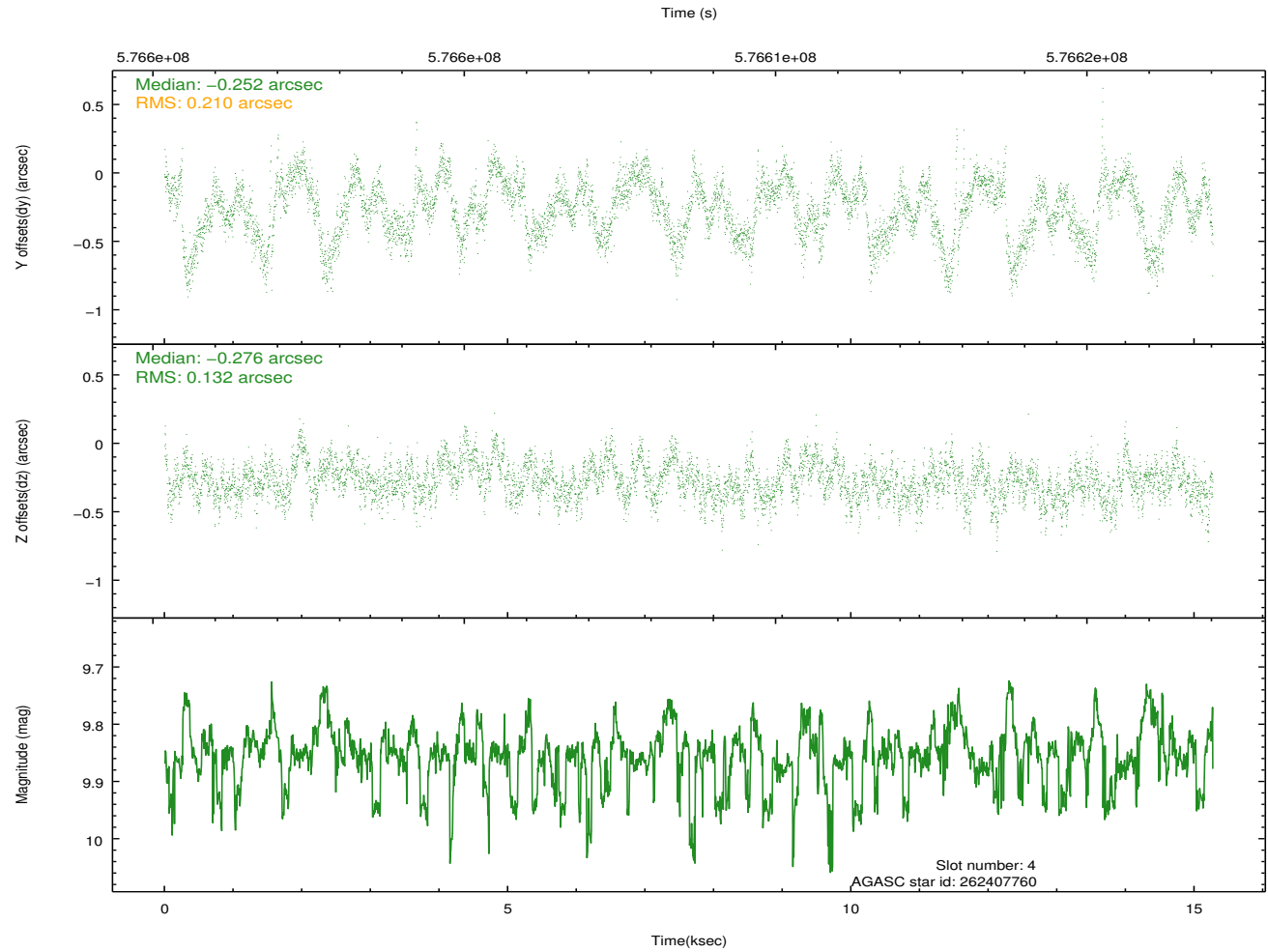
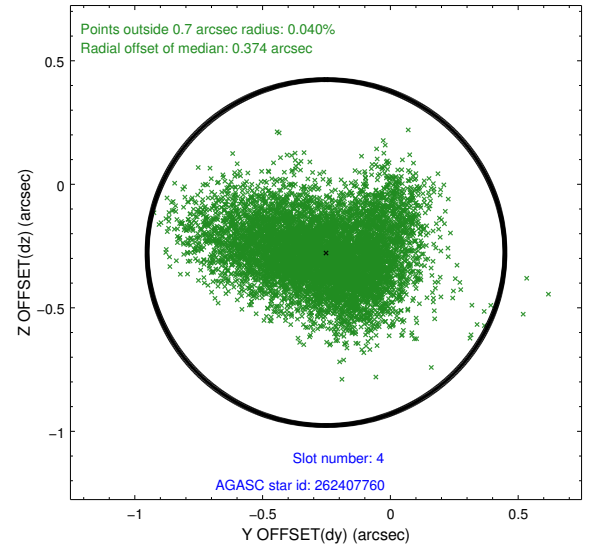
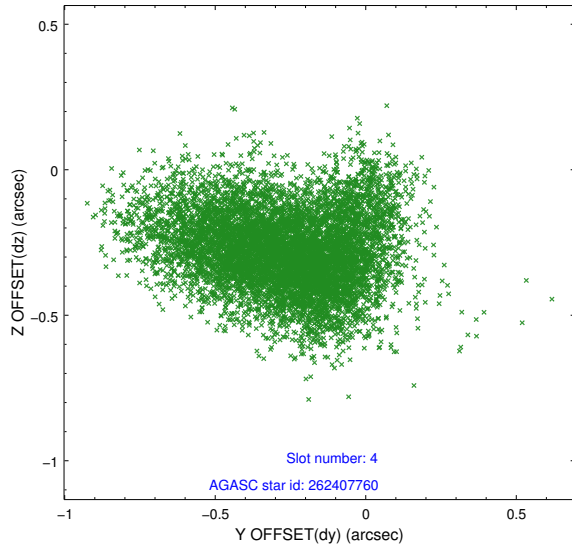
slot	status	used	id	mag	n_pts	med_dy	med_dz	dr1	dr2	ra	dec	mean_y	mean_z
0	FID		ACIS-I-1	7.25	3723	0.113	-0.083	0.010	0.016	0.000000	0.000000	922.52	-911.66
1	FID		ACIS-I-5	7.25	3724	-0.391	0.059	0.009	0.013	0.000000	0.000000	-1826.07	985.60
2	FID		ACIS-I-6	7.25	3723	0.186	0.094	0.009	0.015	0.000000	0.000000	387.63	1630.64
3	GUIDE	used	262407608	9.32	7446	0.144	0.015	0.189	0.285	207.378401	26.435507	-959.48	465.48
4	GUIDE	used	262407760	9.85	7433	-0.252	-0.276	0.261	0.439	206.566773	26.577263	1698.61	646.69
5	GUIDE	used	262408096	9.29	7446	-0.165	-0.070	0.223	0.332	207.011678	26.515421	257.20	494.36
6	GUIDE	used	262408512	7.99	7447	0.165	0.266	0.131	0.213	207.800210	27.128796	-1611.77	-2298.55
7	GUIDE	used	262409552	8.17	7446	0.118	0.064	0.121	0.208	206.584269	27.192805	2209.11	-1510.22

2.4 Star Slots

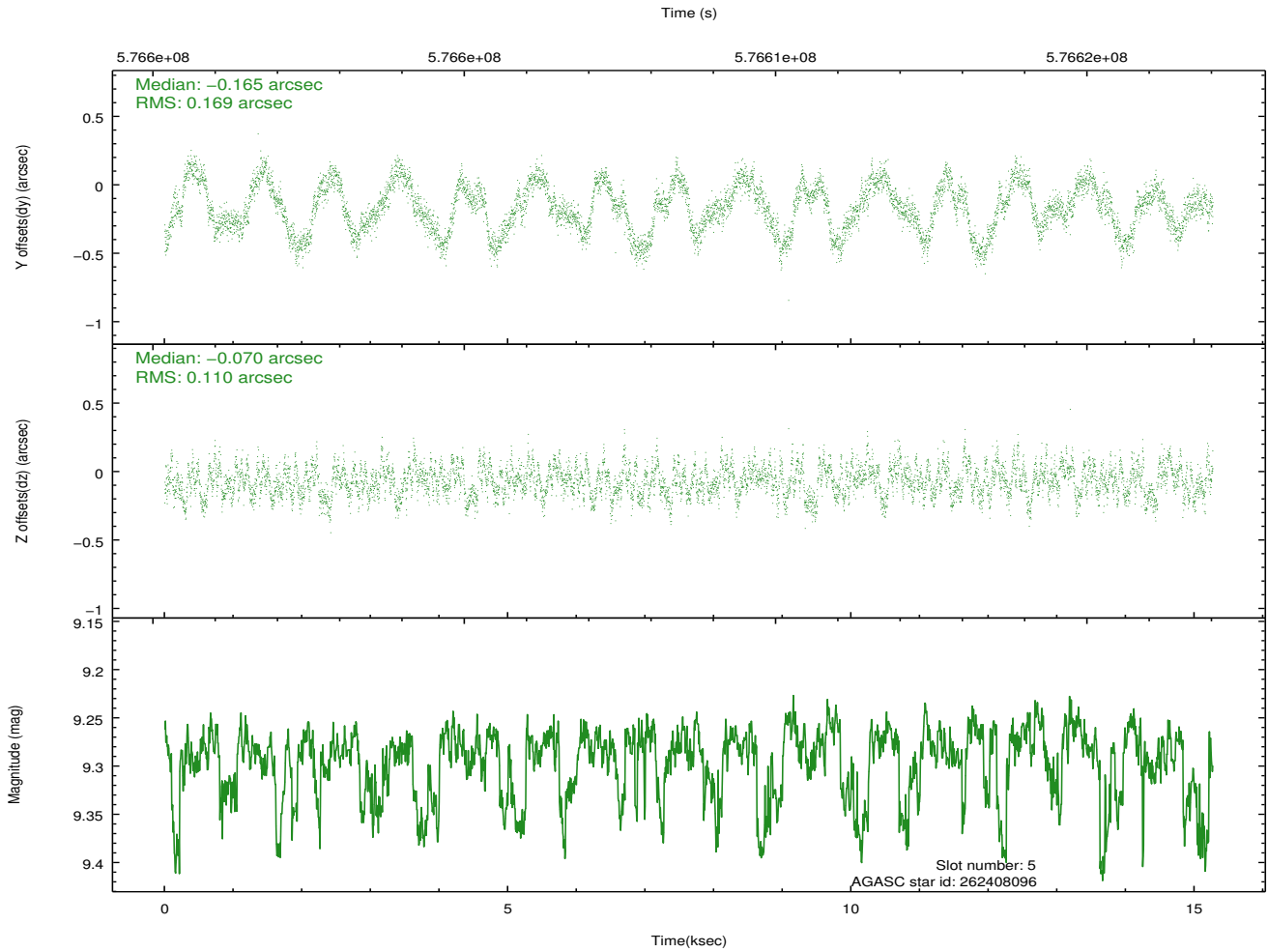
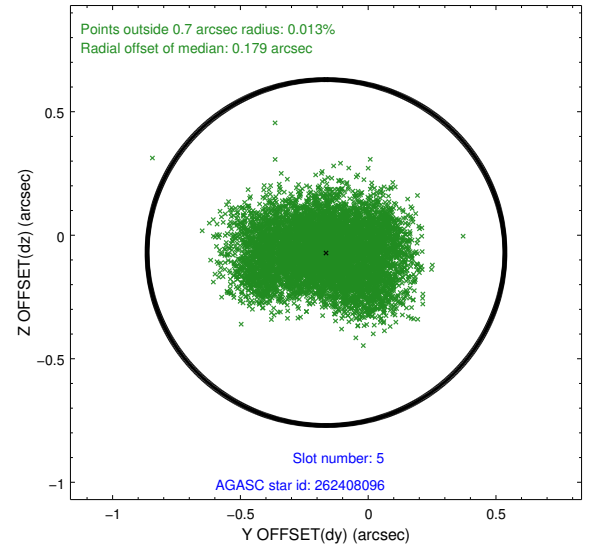
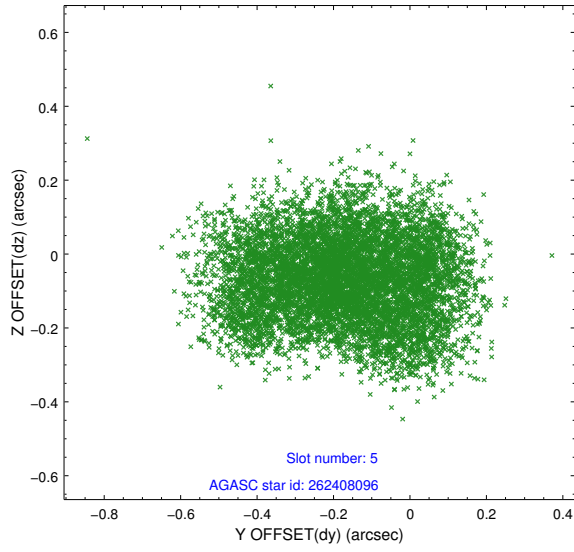
2.4.1 Slot 3



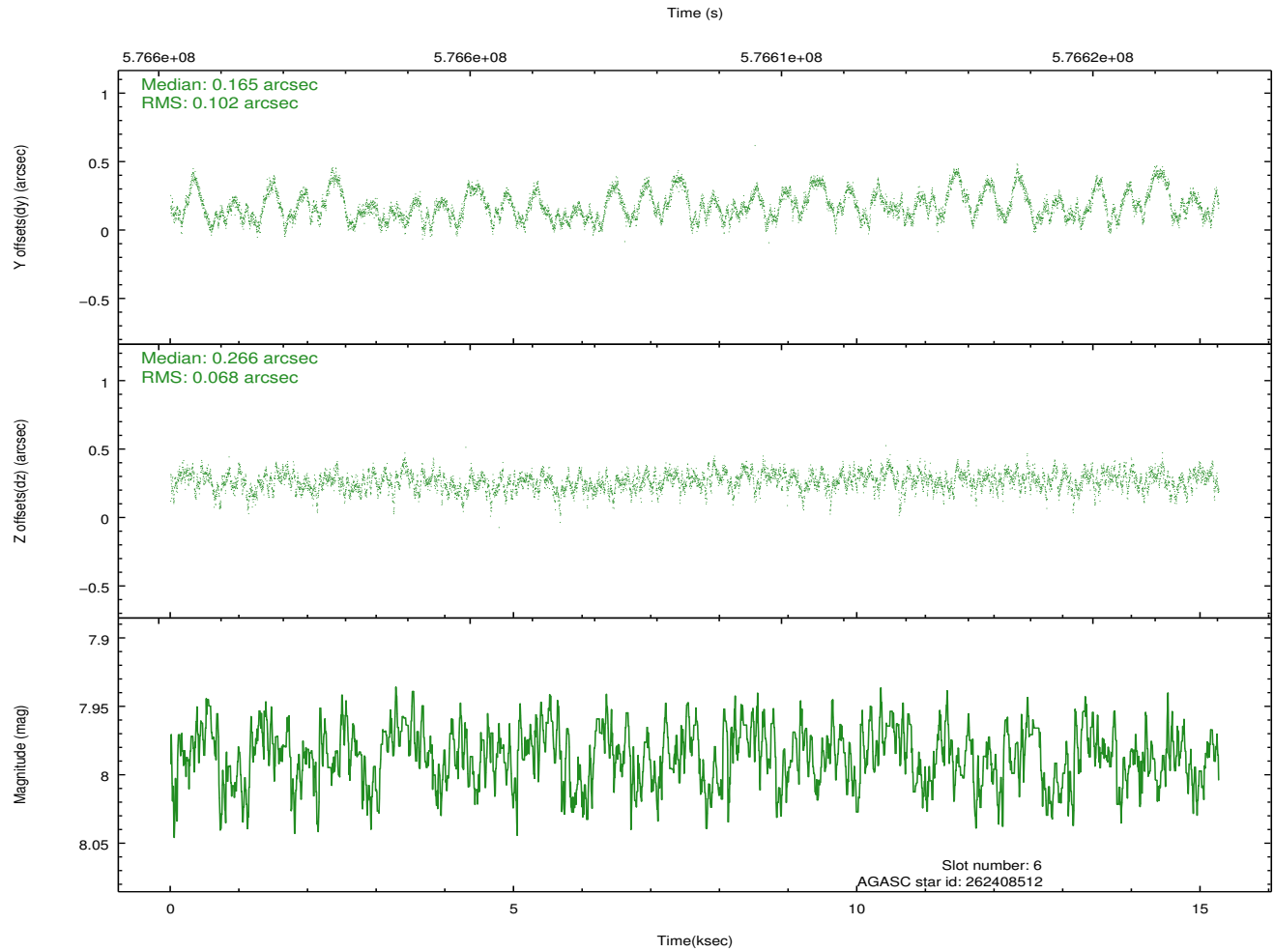
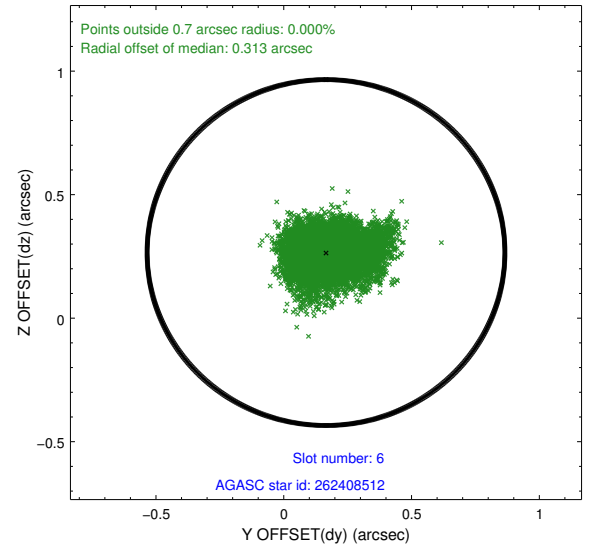
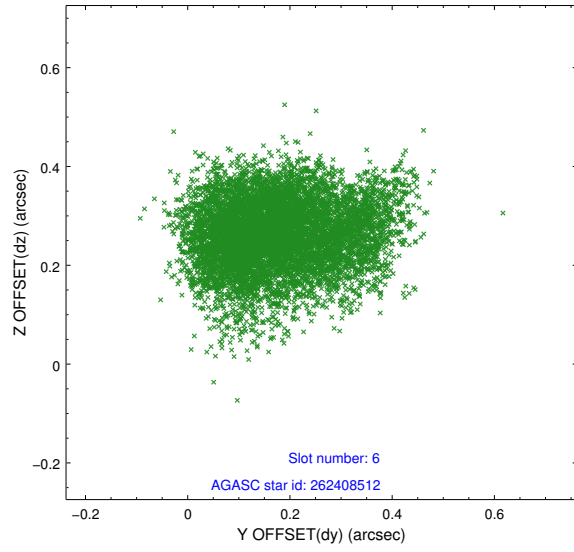
2.4.2 Slot 4



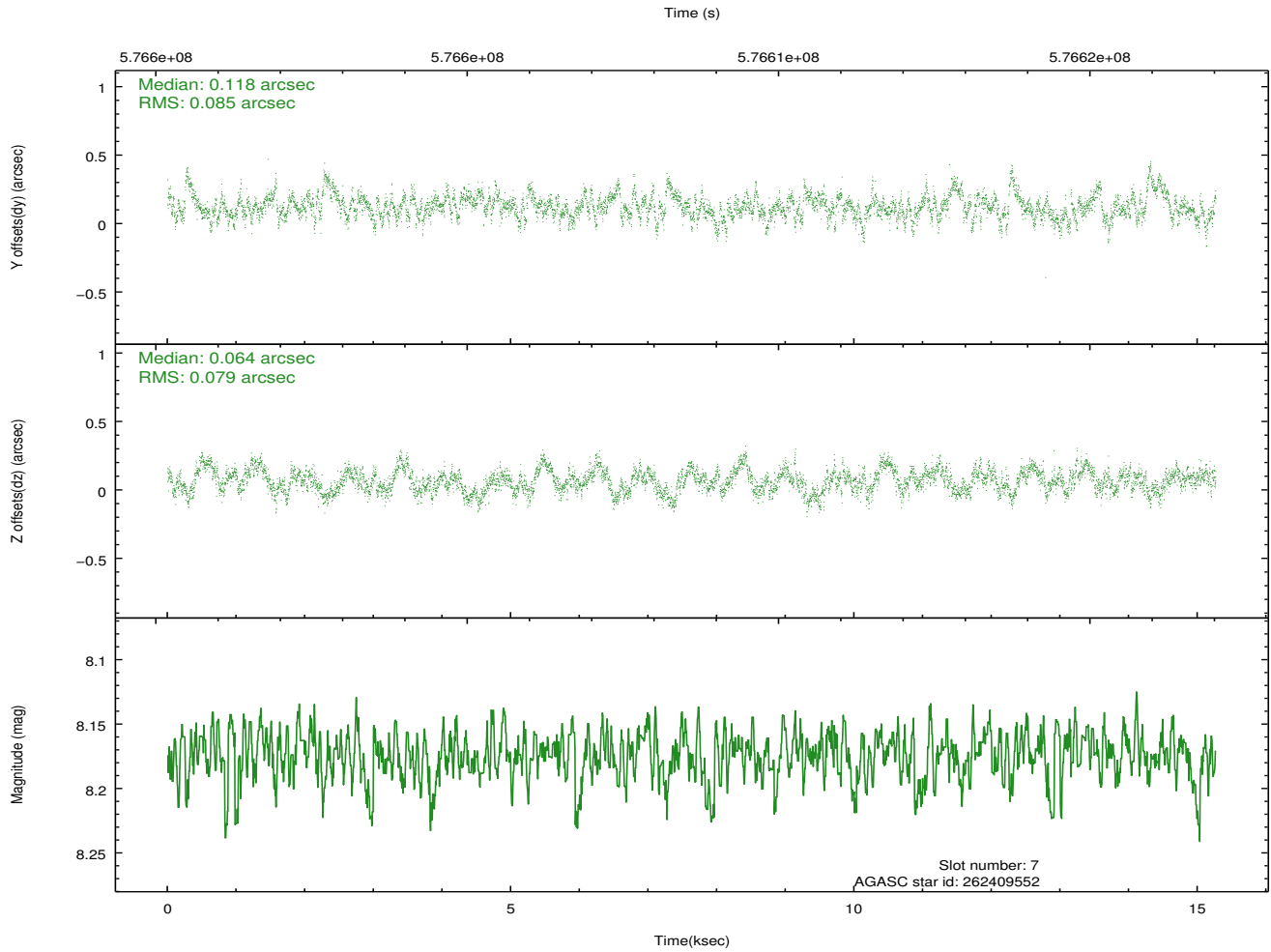
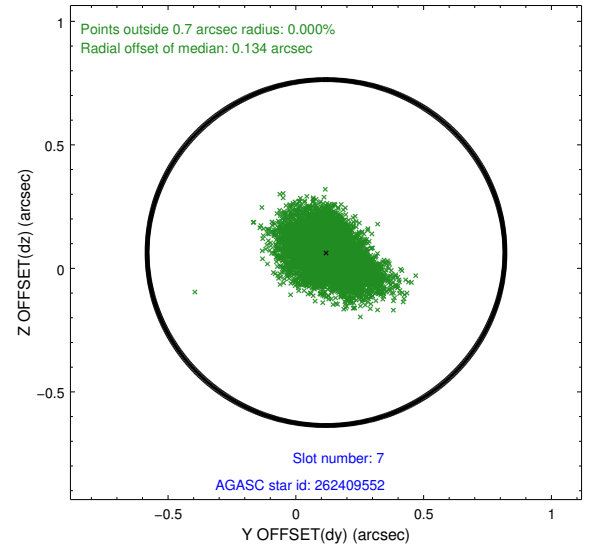
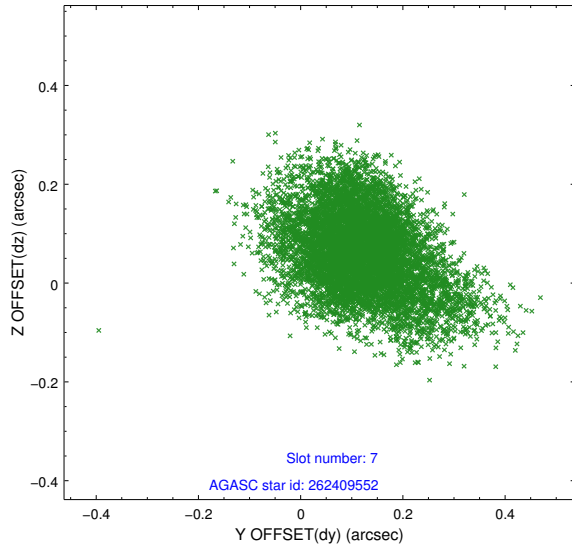
2.4.3 Slot 5



2.4.4 Slot 6

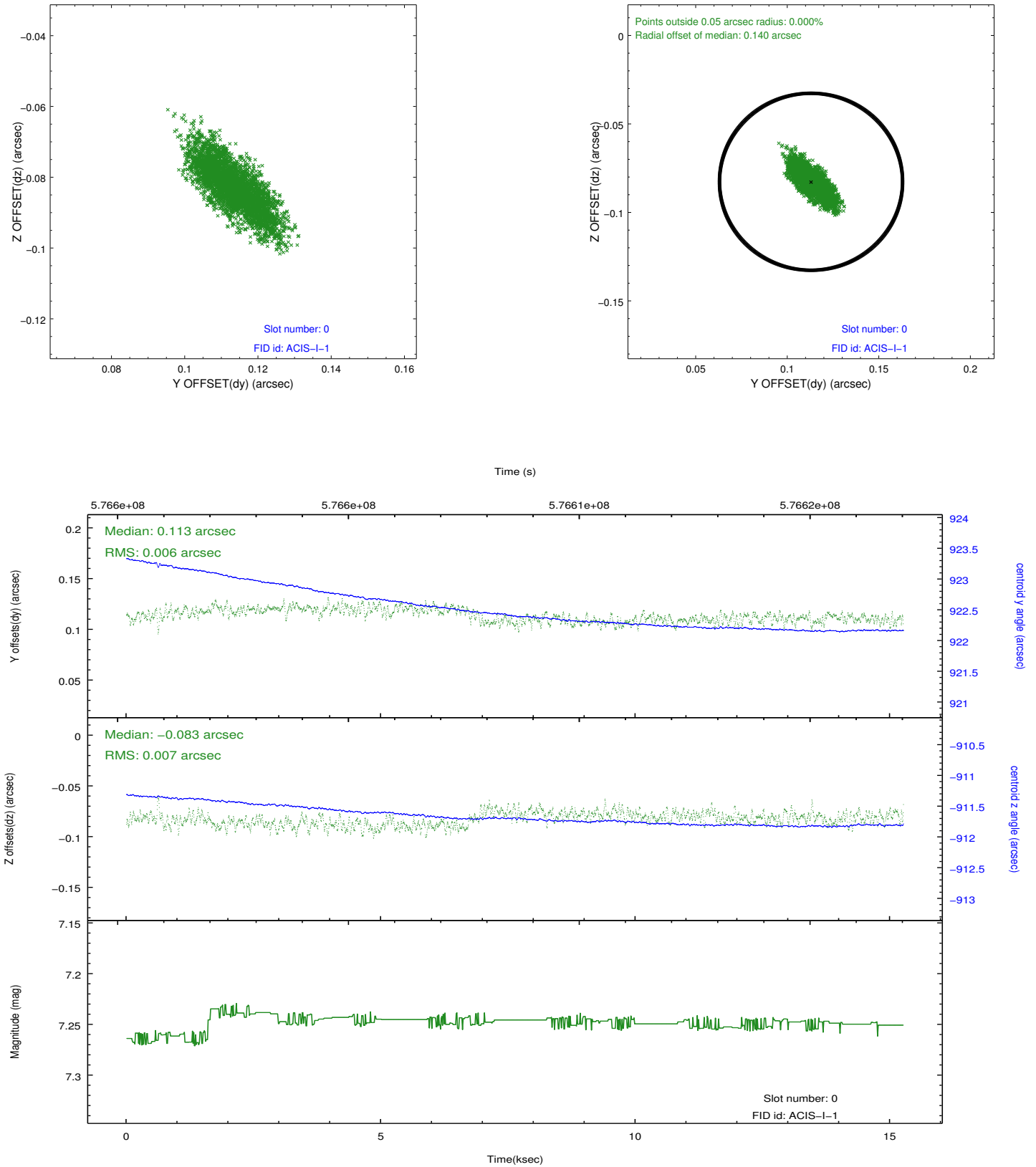


2.4.5 Slot 7

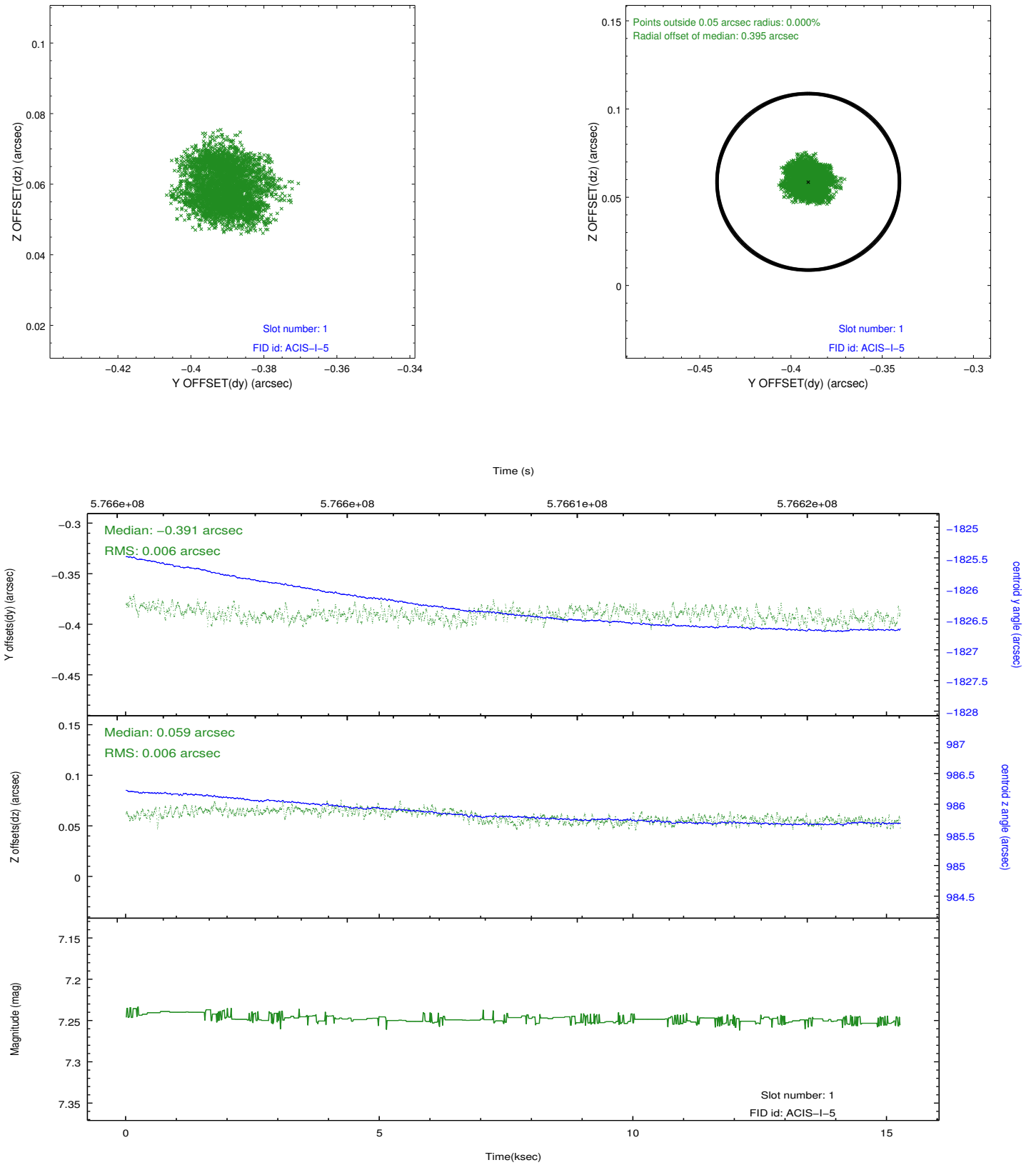


2.5 FID Slots

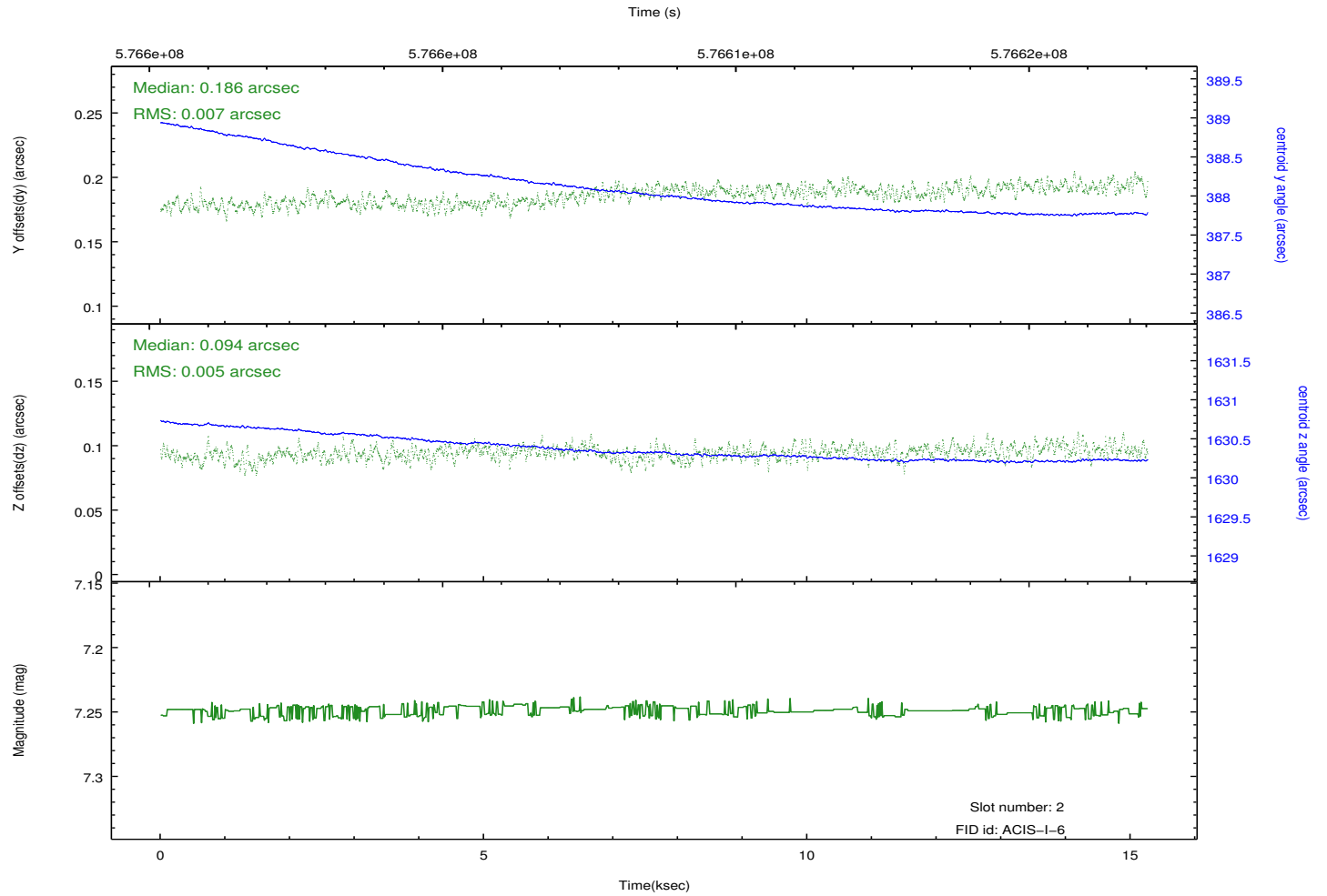
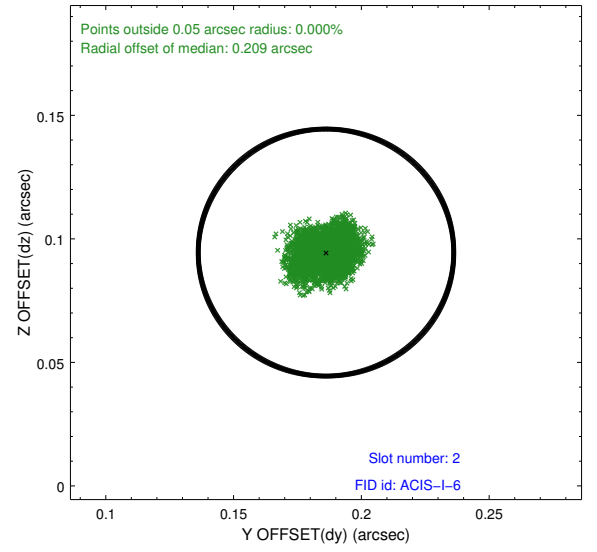
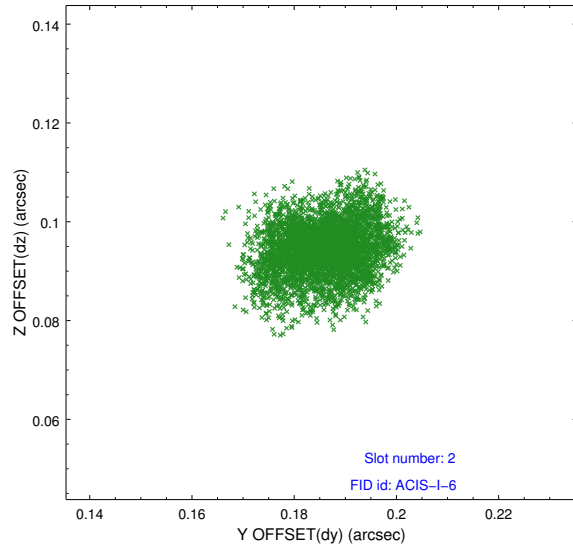
2.5.1 Slot 0



2.5.2 Slot 1



2.5.3 Slot 2



A Summary

A.1 Status

V&V Scientist	Beth Sundheim
V&V Date (YYYY-MM-DD)	2016.04.10
V&V Edition	1
V&V Disposition and Status	OK
V&V Charge Time	15.052295721054

A.2 Comments

Window preference met.