

V&V Reference Report

L2 ASCDS Version : 10.4.1

Observation 17683 - L2 Version 1
Chandra X-Ray Center

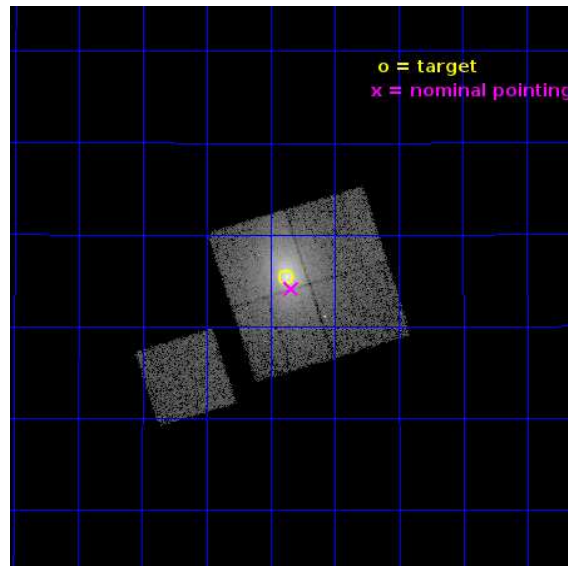
L2 Processing Date : Jul 21 2015

Contents

1	Front	2
2	OBI	3
2.1	OBI	3
2.1.1	Images	3
2.1.2	Bias	3
2.1.3	Parameters	4
2.1.4	Events	4
2.2	Compared Parameters	5
2.3	Aspect	6
2.4	Star Slots	9
2.4.1	Slot 3	9
2.4.2	Slot 4	10
2.4.3	Slot 5	11
2.4.4	Slot 6	12
2.4.5	Slot 7	13
2.5	FID Slots	14
2.5.1	Slot 0	14
2.5.2	Slot 1	15
2.5.3	Slot 2	16
A	Summary	17
A.1	Status	17
A.2	Comments	17

1 Front

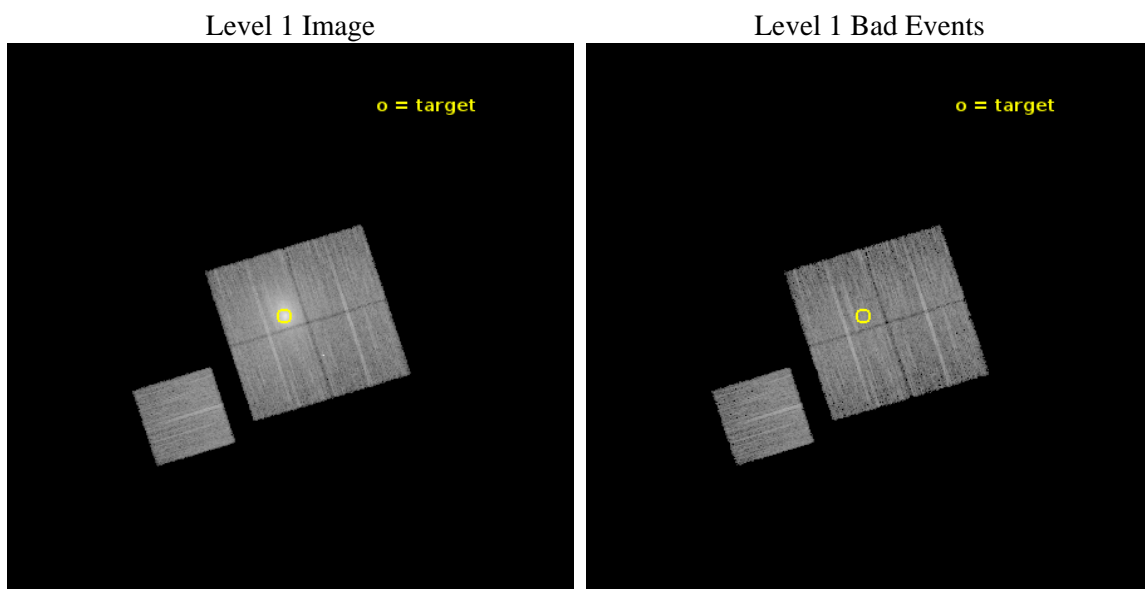
seq_num	890112	Sequence number
obs_id	17683	Observation id
title	Measuring the Spatial Distribution of the ACIS contaminant with Abell 1795	Proposal title
observer	Dr. CXC Calibration	Principal investigator
object	abell 1795	Source name
dtcycle	0	
cycle	P	events from which exps? Prim/Second/Both
ra_targ	207.219583	Observer's specified target RA [deg]
dec_targ	26.590833	Observer's specified target Dec [deg]
ra_nom	207.20976496746	Nominal RA [deg]
dec_nom	26.568943074402	Nominal Dec [deg]
roll_nom	252.53396988797	Nominal Roll [deg]
revision	1	Processing version of data
ontime	14019.960039139	Sum of GTIs [s]
livetime	13836.778939883	Livetime [s]
ontime0	14019.836919188	Sum of GTIs [s]
ontime1	14019.877959132	Sum of GTIs [s]
ontime2	14019.918999195	Sum of GTIs [s]
ontime3	14019.960039139	Sum of GTIs [s]
ontime6	14019.795879126	Sum of GTIs [s]
l2events	133470	Number of level 2 events



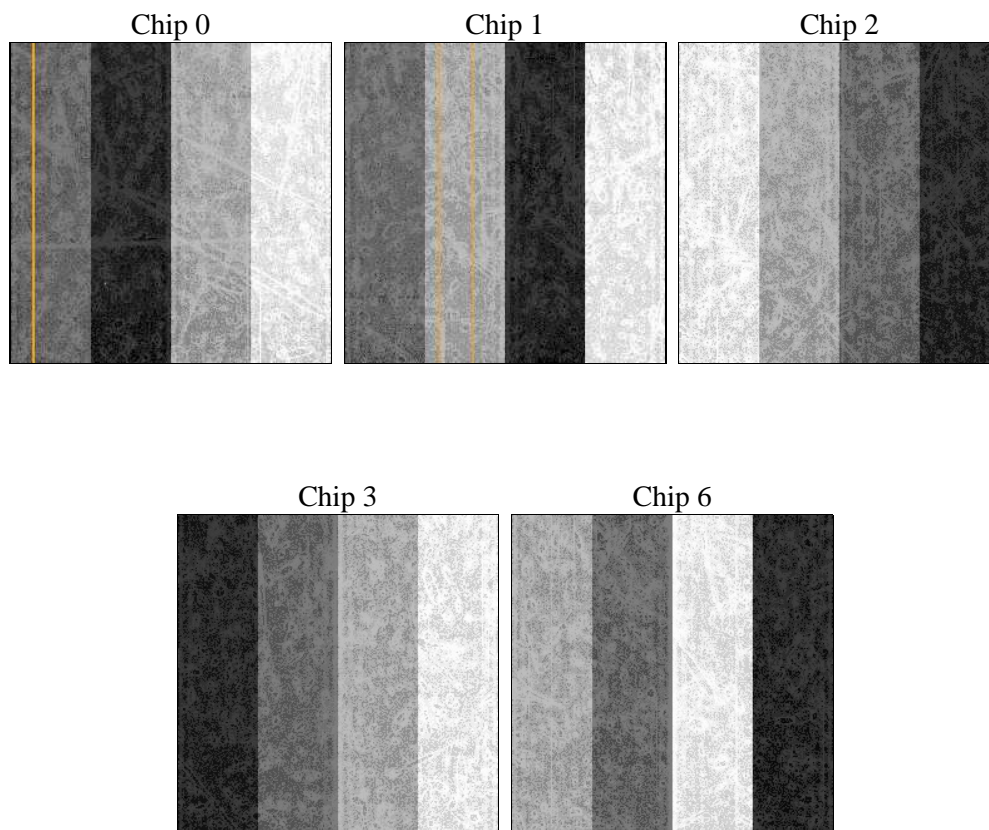
2 OBI

2.1 OBI

2.1.1 Images



2.1.2 Bias



2.1.3 Parameters

obi_num	0	Obi number	sched_exp_time	13961.050000	[s] Scheduled observation exposure time
ascdsver	10.4.1	Processing system revision	ontime	14019.960039139	Sum of GTIs [s]
caldbver	4.6.8	 	ontime0	14019.836919188	Sum of GTIs [s]
date	2015-07-21T17:11:29	Date and time of file creation	ontime1	14019.877959132	Sum of GTIs [s]
revision	1	Processing version of data	ontime2	14019.918999195	Sum of GTIs [s]
			ontime3	14019.960039139	Sum of GTIs [s]
			ontime6	14019.795879126	Sum of GTIs [s]
			l1events	447869	Number of level 1 events

2.1.4 Events

	ccd 0	ccd 1	ccd 2	ccd 3	ccd 6
level 1 events	69824	75442	84786	145137	72680
rejected events	56546	57679	63494	62764	63790
rejected %	80%	76%	74%	43%	87%

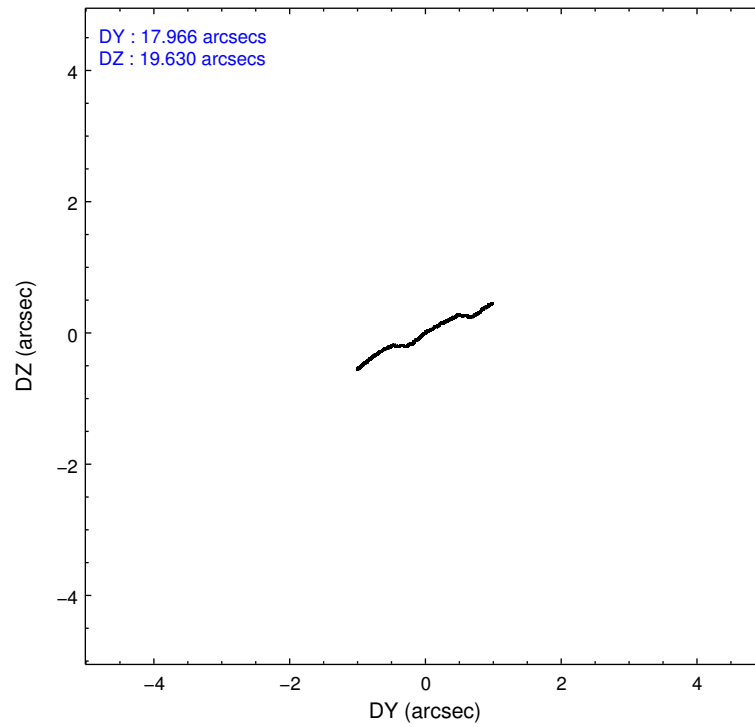
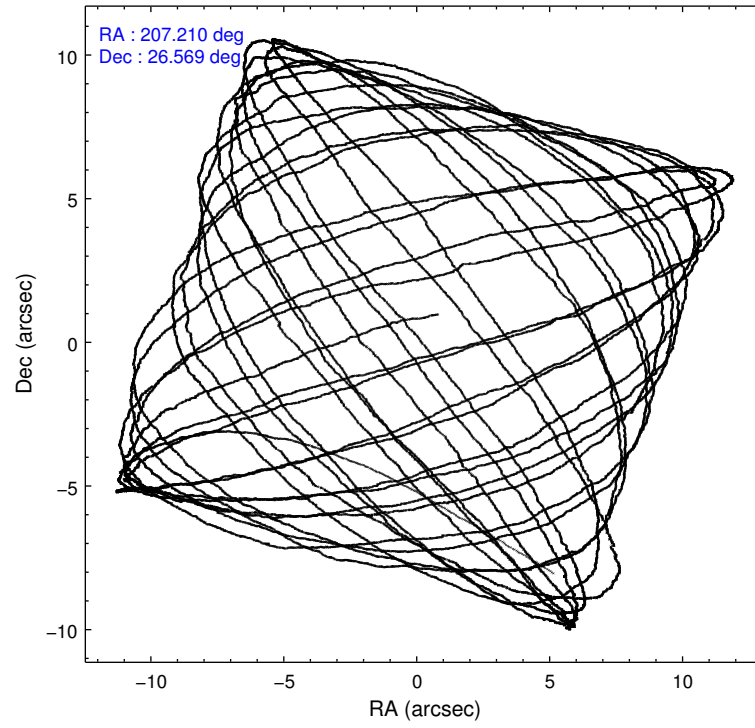
	ccd 0	ccd 1	ccd 2	ccd 3	ccd 6
grade 0 events	6765	9851	13707	63713	3098
	9%	13%	16%	43%	4%
grade 1 events	72	68	87	308	28
	0%	0%	0%	0%	0%
grade 2 events	2715	3228	3250	9047	2051
	3%	4%	3%	6%	2%
grade 3 events	1033	1144	1172	3051	907
	1%	1%	1%	2%	1%
grade 4 events	919	1178	1216	3080	889
	1%	1%	1%	2%	1%
grade 5 events	3353	3579	3018	4061	3690
	4%	4%	3%	2%	5%
grade 6 events	1851	2365	1950	3500	1945
	2%	3%	2%	2%	2%
grade 7 events	53116	54029	60386	58377	60072
	76%	71%	71%	40%	82%

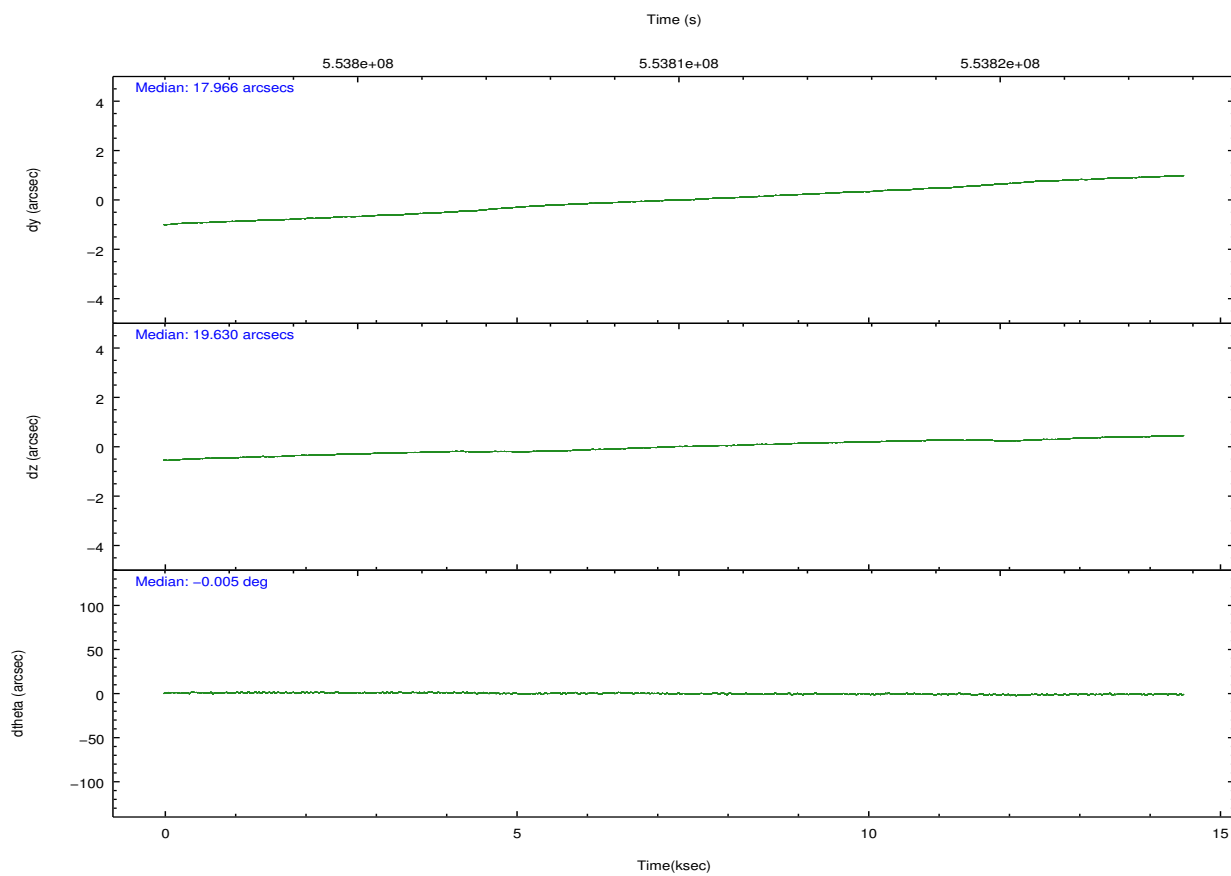
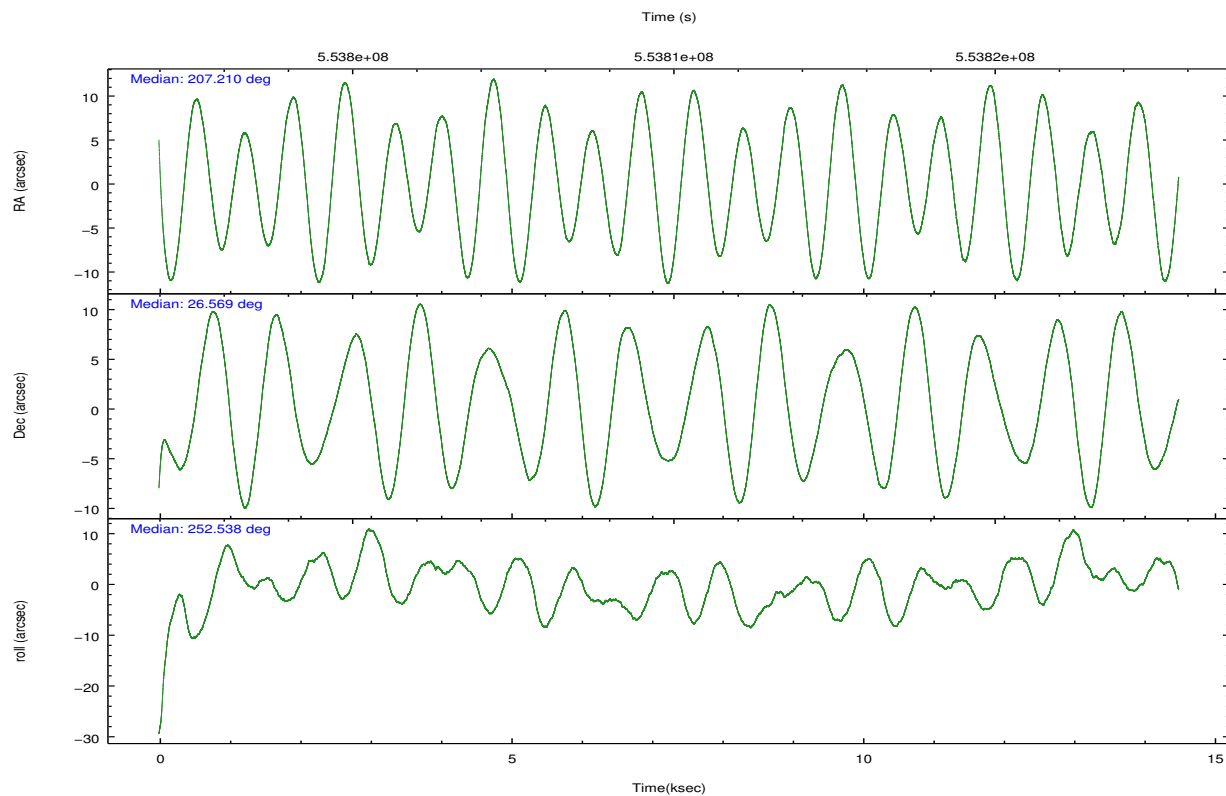
2.2 Compared Parameters

Parameter	Planned	Actual
Instrument	ACIS	ACIS
Detector	ACIS-01236	ACIS-01236
Grating	NONE	NONE
Data mode	VFAINT	VFAINT
Observation mode	POINTING	POINTING
[deg] Pointing RA	207.203004	207.20976496746
[deg] Pointing Dec	26.595906	26.56894307440239
[deg] Pointing Roll	252.328313	252.5339698879716
[mm] SIM focus pos	-0.782348	-0.7809083437167272
[mm] SIM defocus	0	0.001439871863259334
[mm] SIM translation stage pos	-230.252463	-230.248423740357
[mm] SIM translation stage offset	-3.34	-3.34402926257269
[s] Observation start time (MET)	553803204.184000	553802079.8611701
Observation start date	2015-07-20T18:12:16	2015-07-20T17:54:39
[s] Observation end time (MET)	553817165.184000	553817398.48703
Observation end date	2015-07-20T22:04:57	2015-07-20T22:09:58
Read mode	TIMED	TIMED

Parameter	Planned	Actual
Obspar format version number	7	7
Obspar file type	PREDICTED	ACTUAL
Obspar update status	NONE	UPDATED
Number of optional ACIS chips dropped	0	0
On-chip summing requested	N	N
Subarray requested	NONE	NONE
Alternating exposures requested	N	N
[s] Primary exposure time	0.000000	3.1

2.3 Aspect



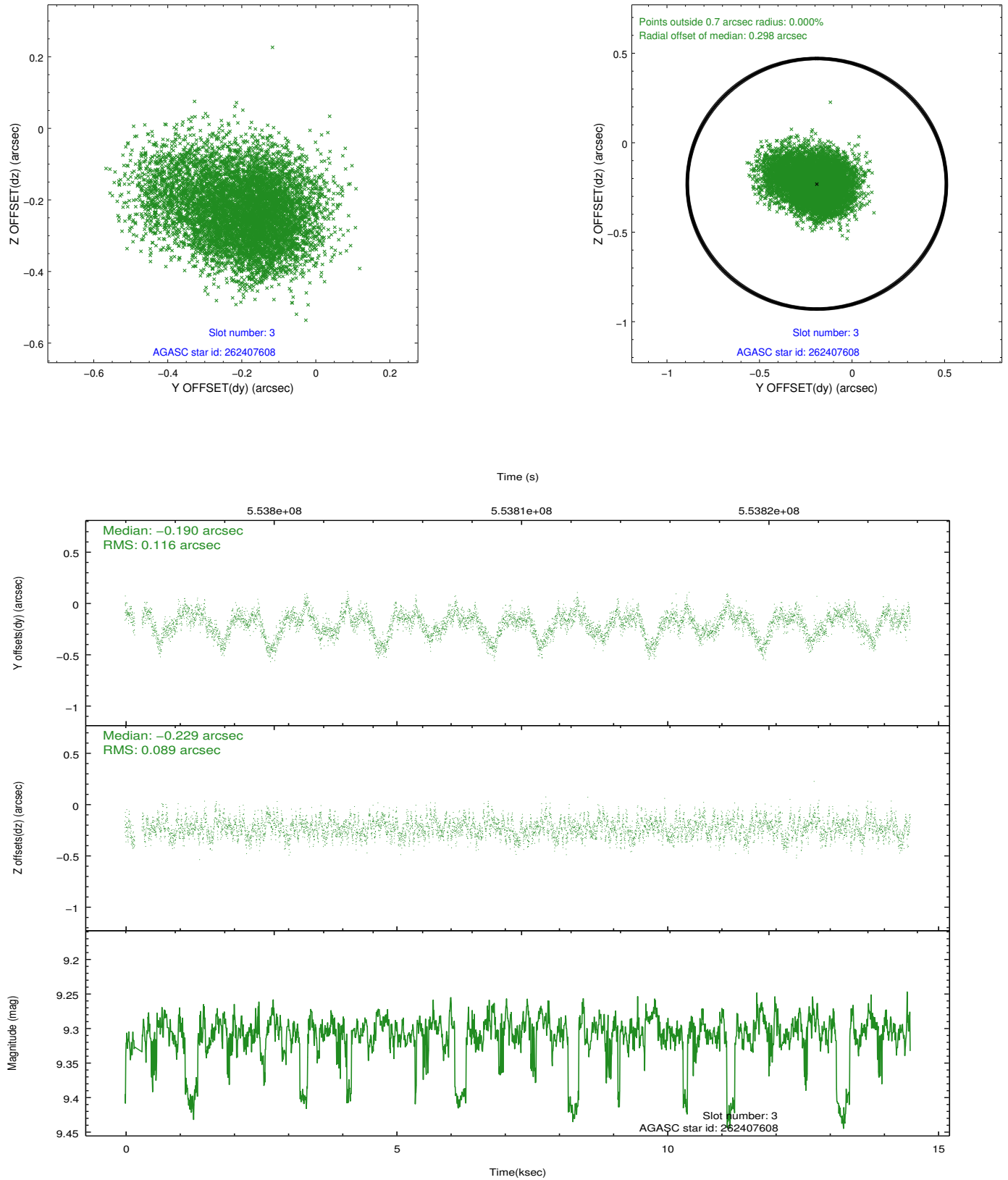


Slot Statistics

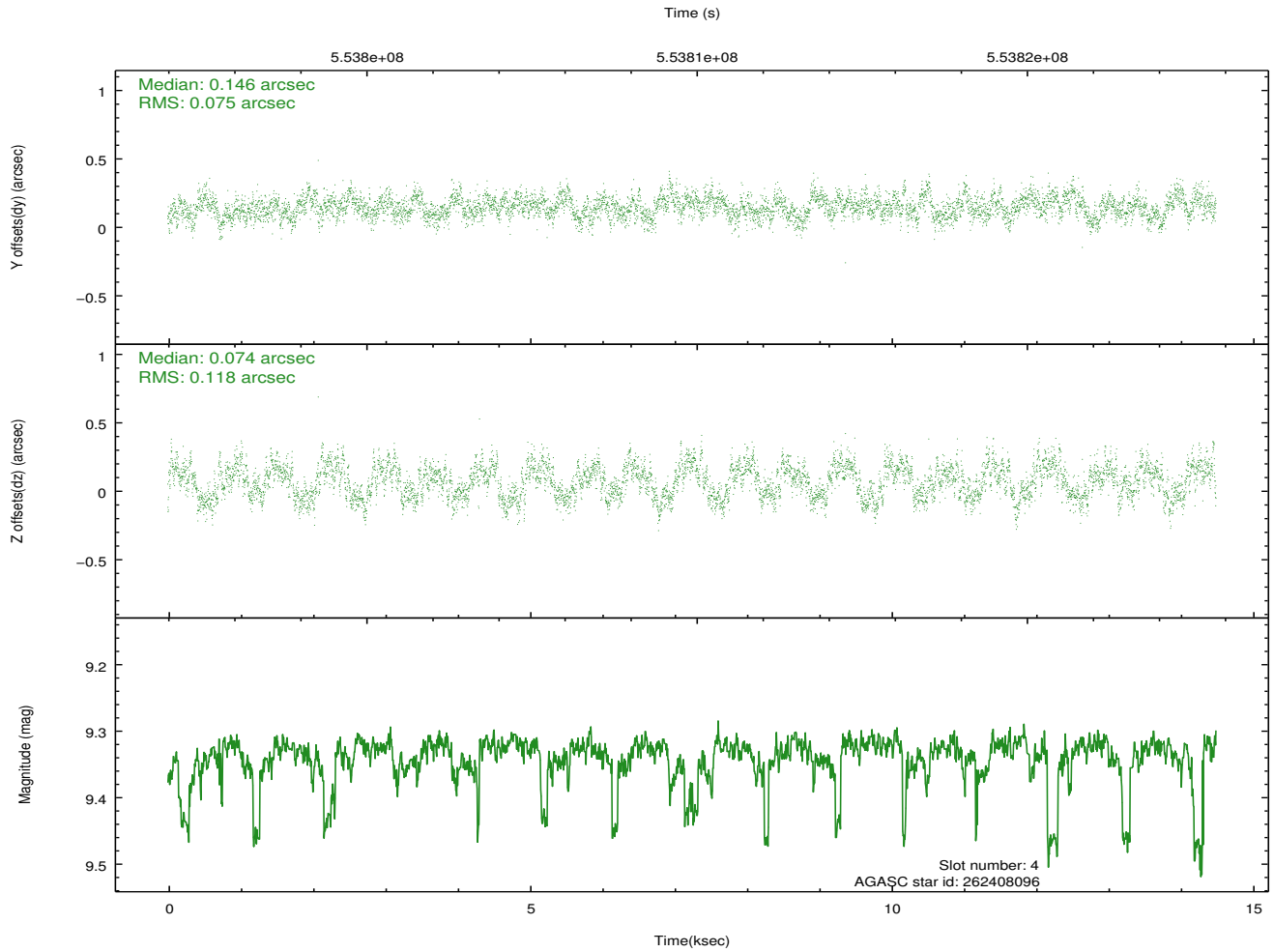
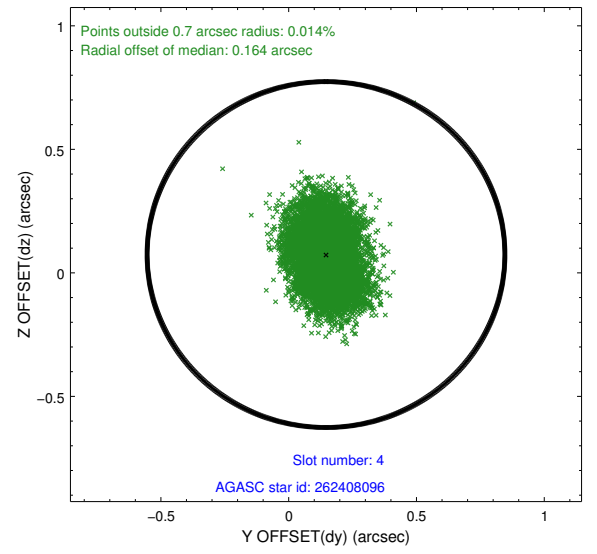
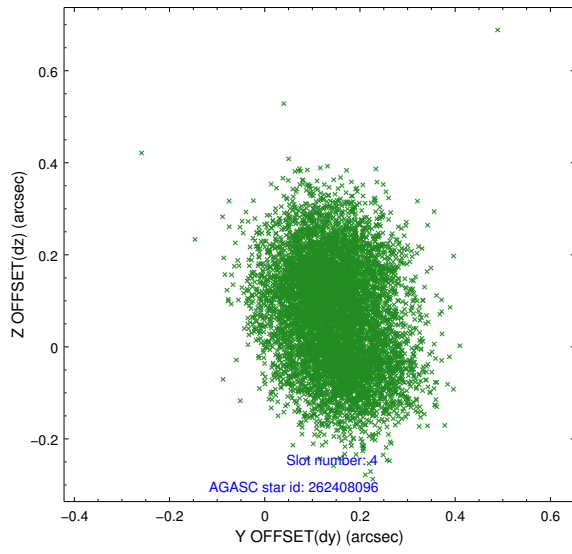
slot	status	used	id	mag	n_pts	med_dy	med_dz	dr1	dr2	ra	dec	mean_y	mean_z
0	FID		ACIS-I-1	7.10	3536	0.072	-0.029	0.009	0.016	0.000000	0.000000	921.48	-911.91
1	FID		ACIS-I-5	7.10	3535	-0.294	0.052	0.018	0.025	0.000000	0.000000	-1826.91	985.35
2	FID		ACIS-I-6	7.09	3536	0.132	0.046	0.021	0.029	0.000000	0.000000	386.62	1630.31
3	GUIDE	used	262407608	9.31	7005	-0.190	-0.229	0.153	0.257	207.378401	26.435507	378.34	714.26
4	GUIDE	used	262408096	9.34	7067	0.146	0.074	0.150	0.235	207.011678	26.515421	463.07	-499.42
5	GUIDE	used	262408936	9.67	7065	0.149	0.064	0.178	0.305	207.154731	26.726554	-400.53	-289.89
6	GUIDE	used	262411960	9.64	7064	-0.093	-0.016	0.183	0.283	207.327895	25.881727	2326.91	1166.13
7	GUIDE	used	262407800	10.04	6863	-0.028	0.123	0.267	0.405	207.321181	27.251762	-2362.94	-358.00

2.4 Star Slots

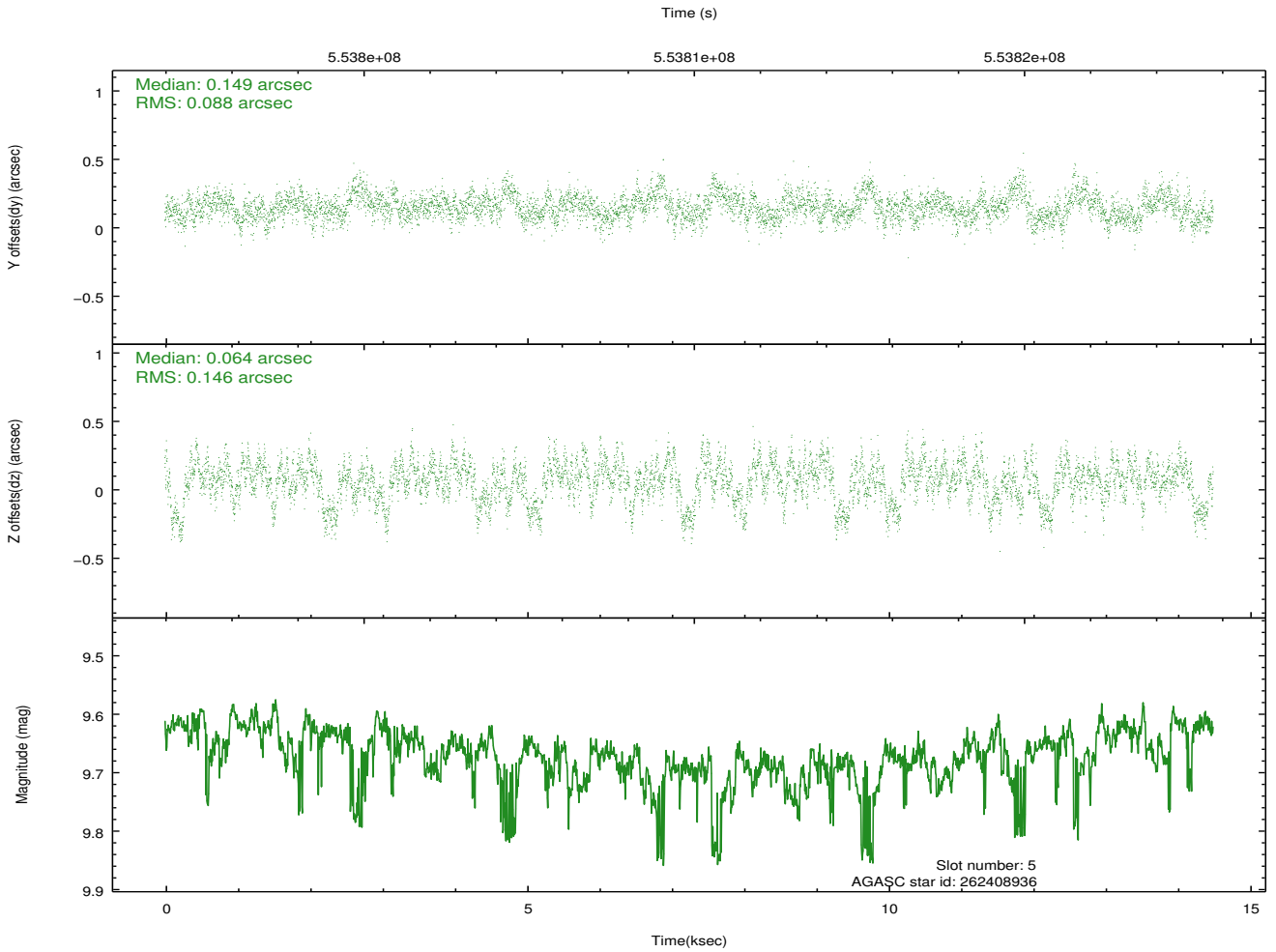
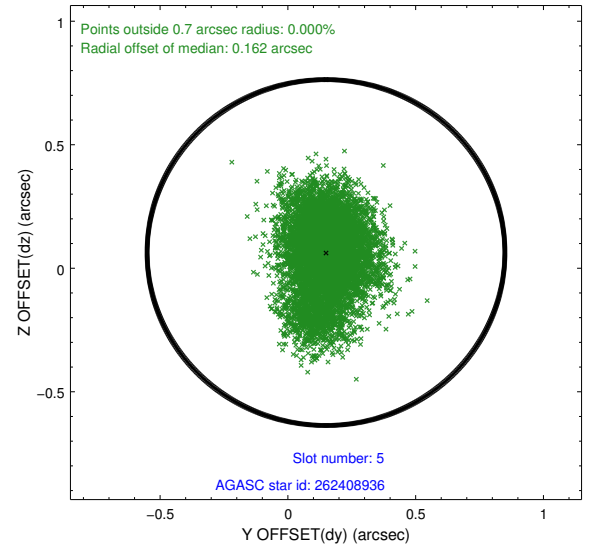
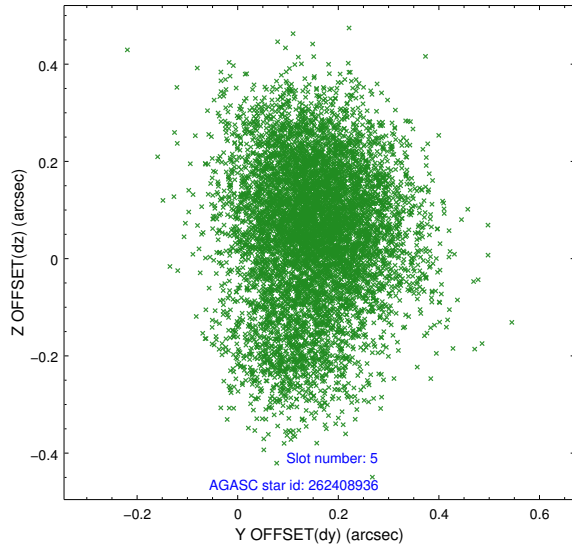
2.4.1 Slot 3



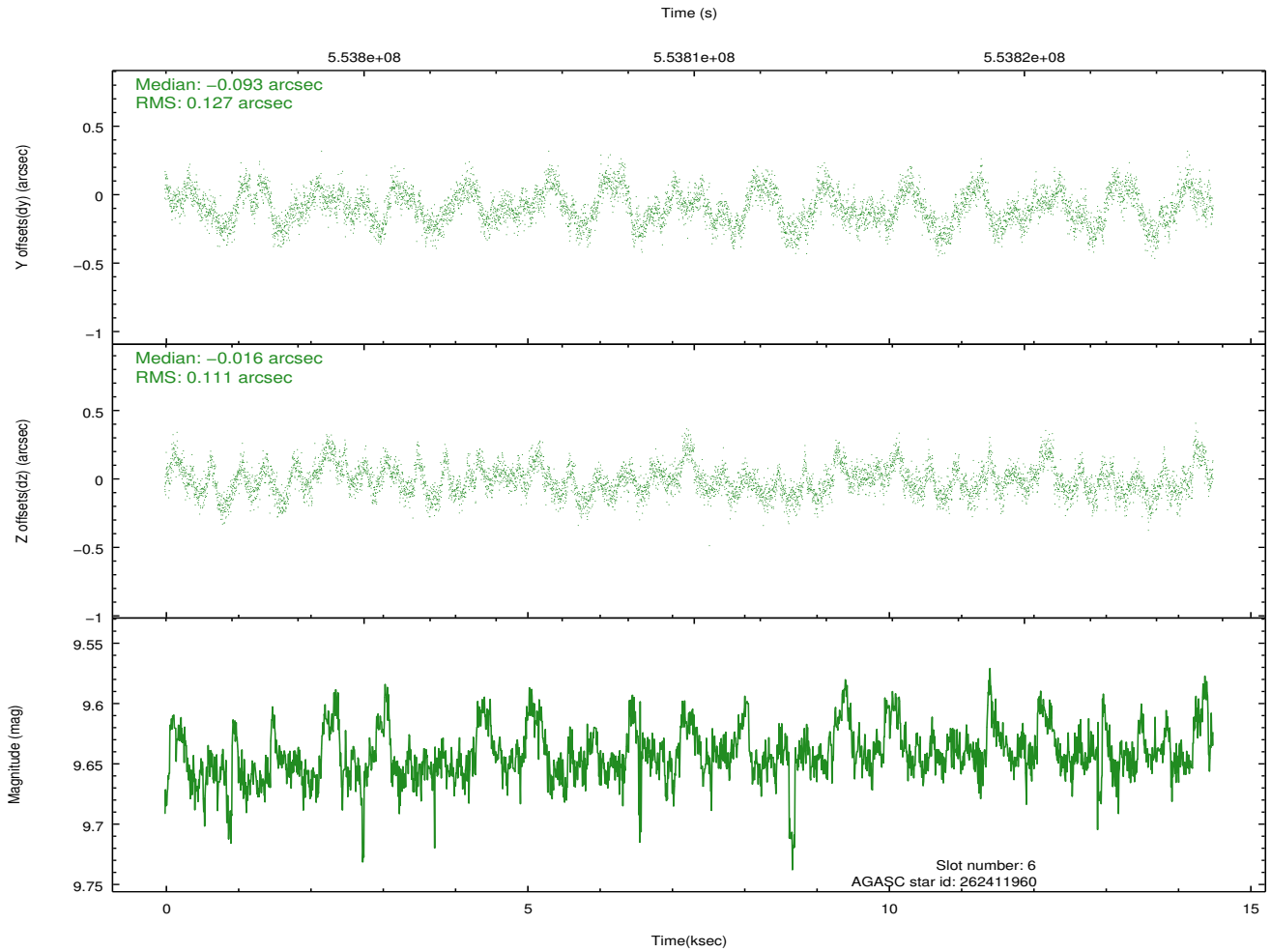
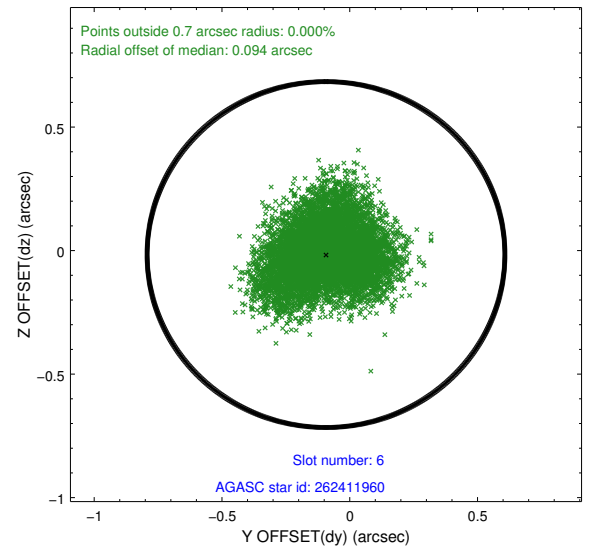
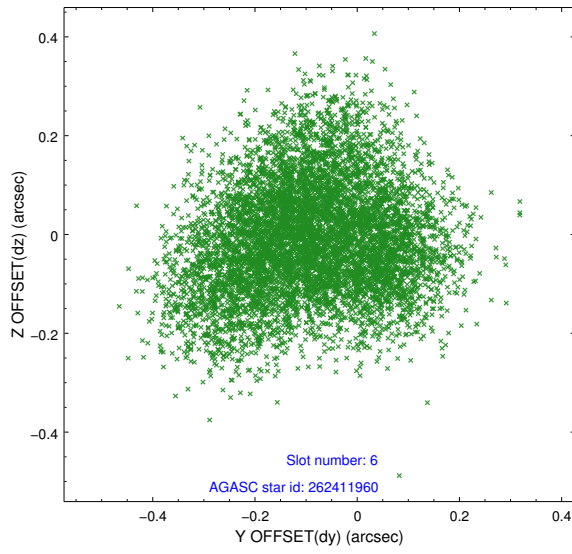
2.4.2 Slot 4



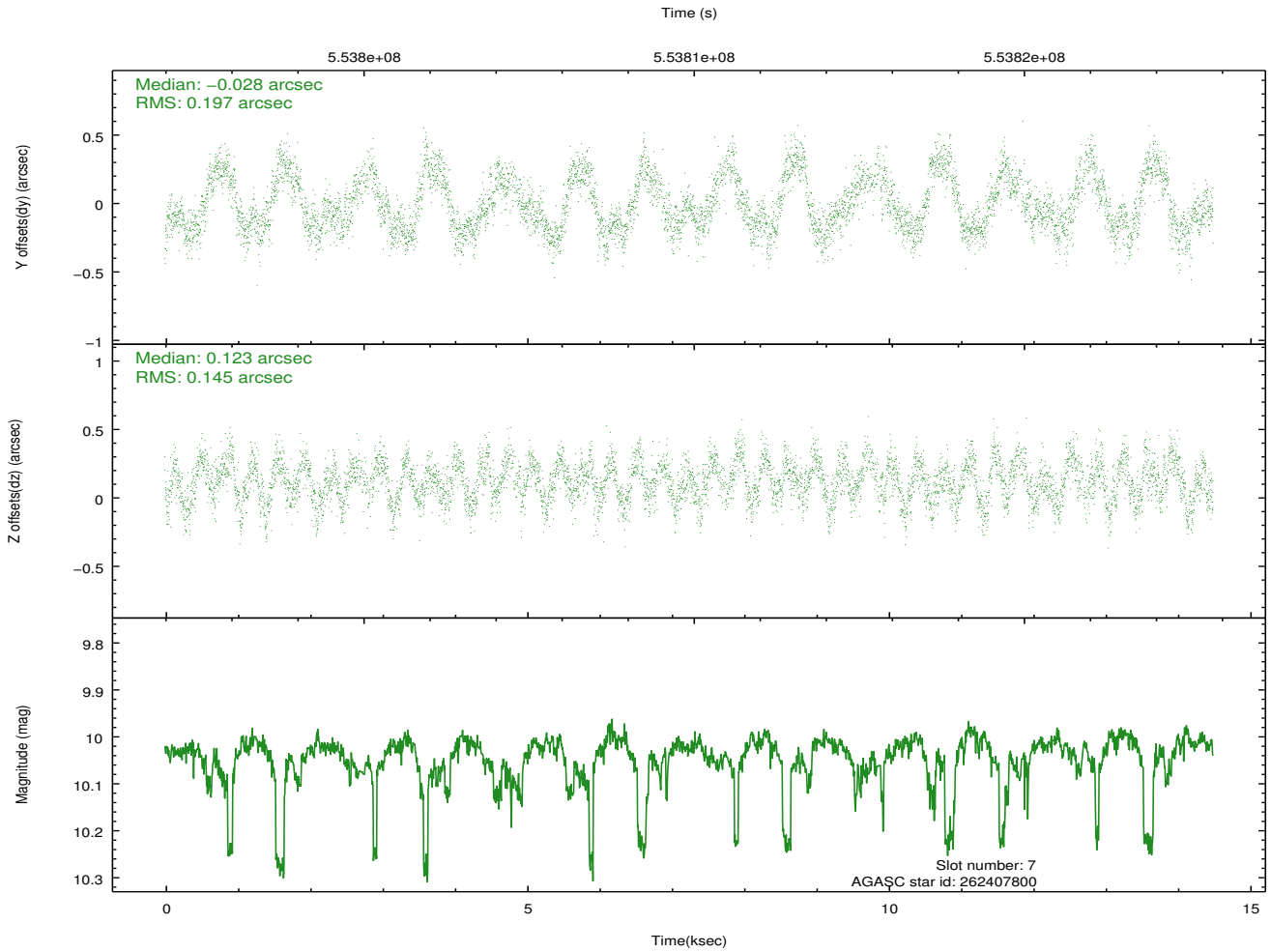
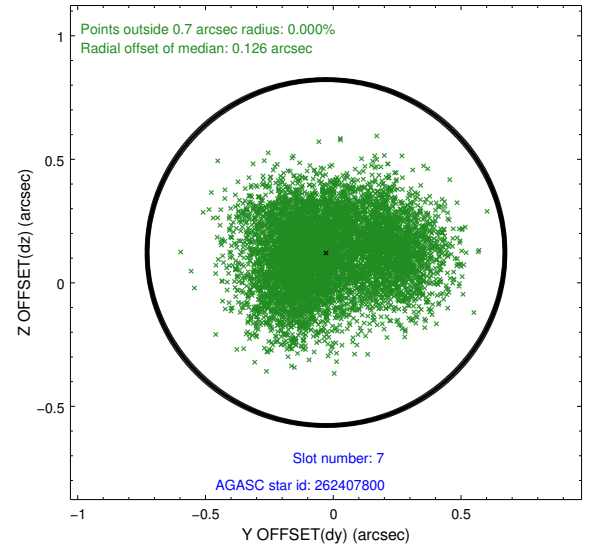
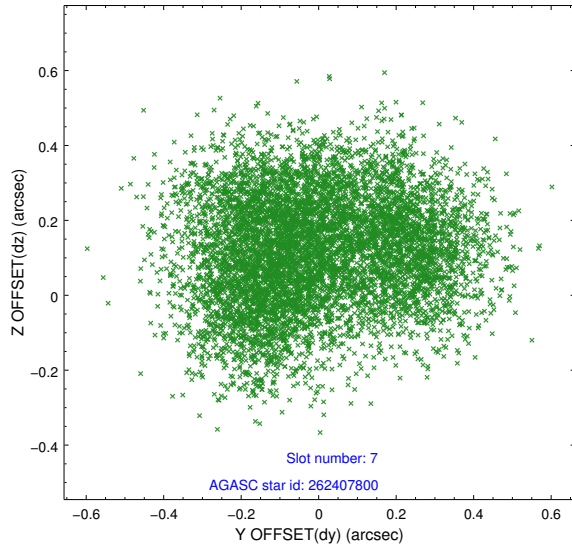
2.4.3 Slot 5



2.4.4 Slot 6

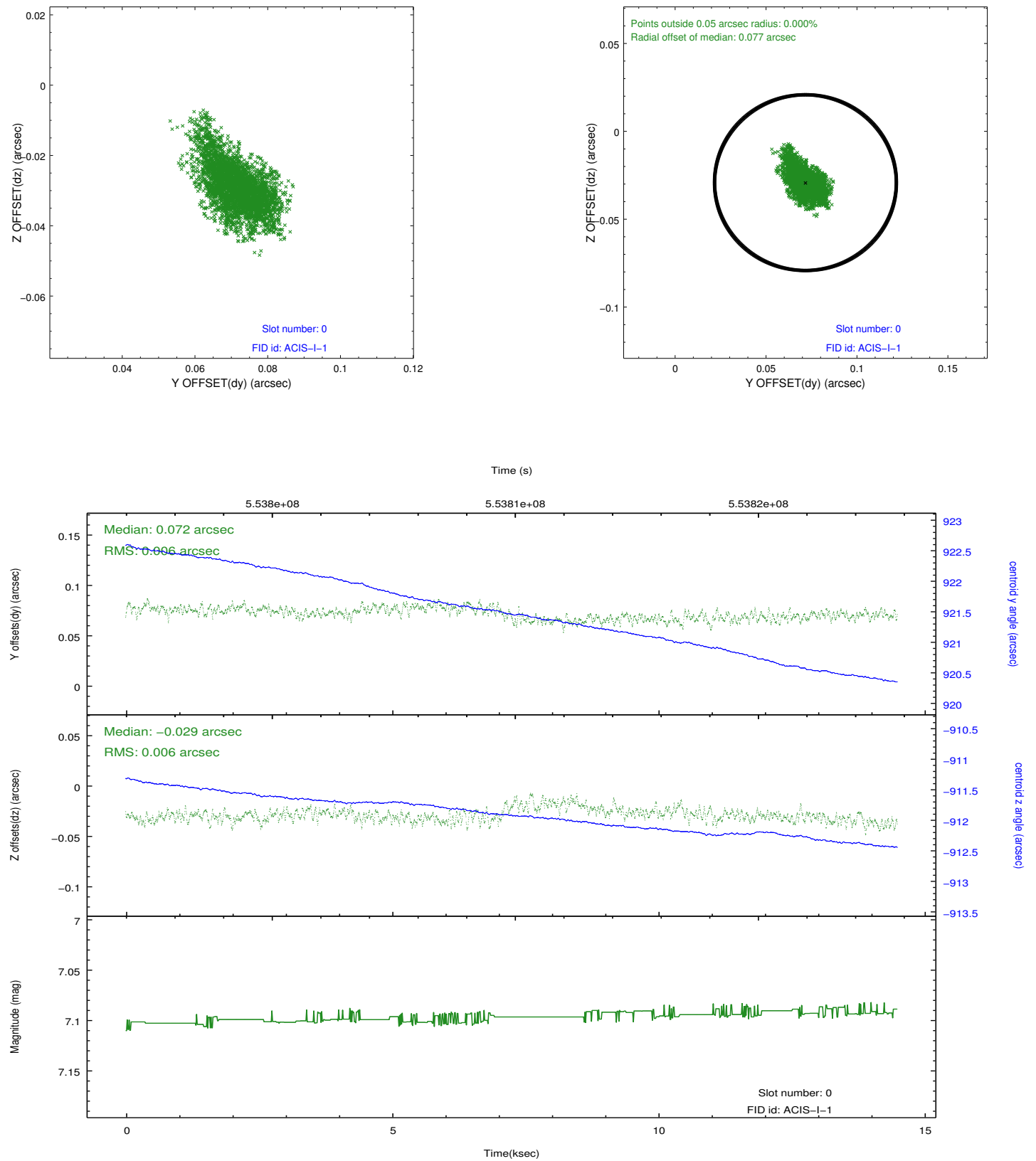


2.4.5 Slot 7

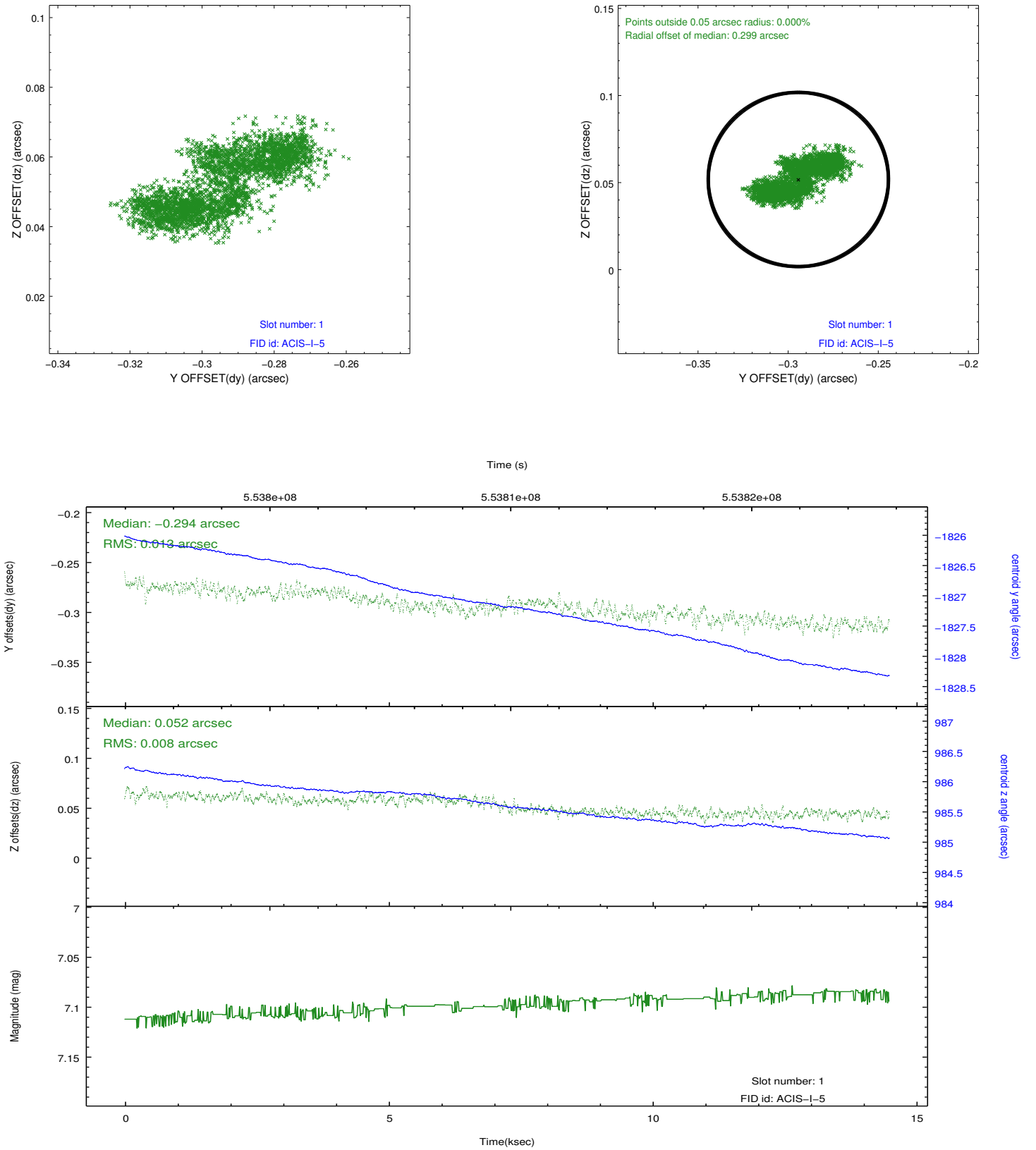


2.5 FID Slots

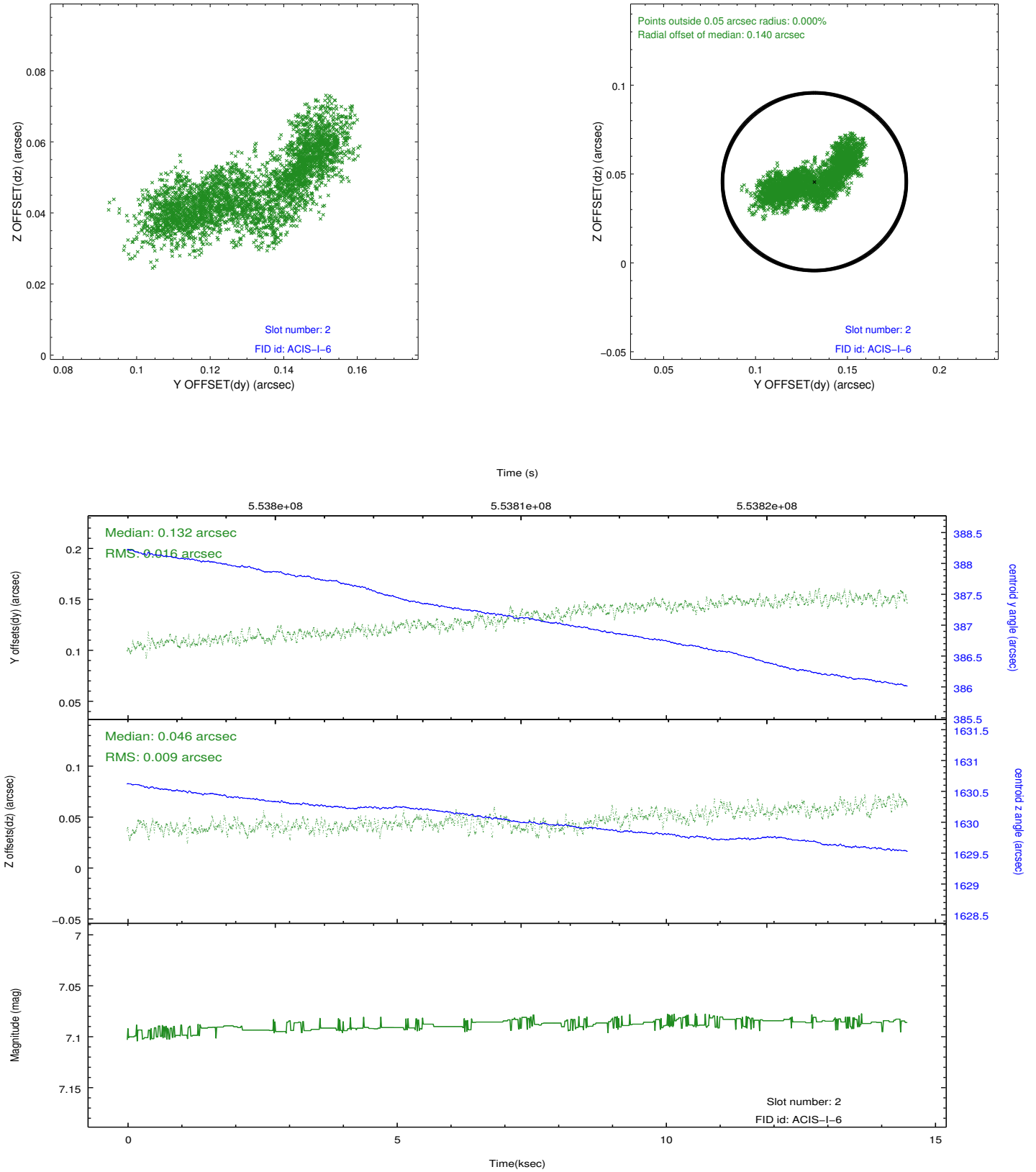
2.5.1 Slot 0



2.5.2 Slot 1



2.5.3 Slot 2



A Summary

A.1 Status

V&V Scientist	Beth Sundheim
V&V Date (YYYY-MM-DD)	2015.07.21
V&V Edition	1
V&V Disposition and Status	OK
V&V Charge Time	14.019960039139

A.2 Comments