

V&V Reference Report

L2 ASCDS Version : 10.5

Observation 18361 - L2 Version 1
Chandra X-Ray Center

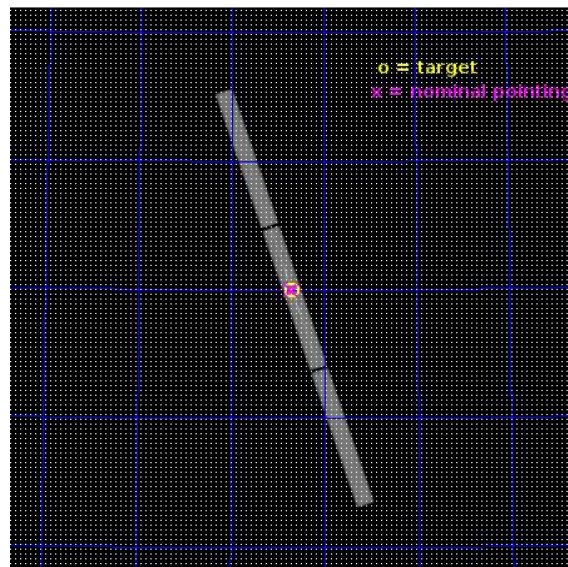
L2 Processing Date : Jul 27 2016

Contents

1	Front	2
2	OBI	3
2.1	OBI	3
2.1.1	Images	3
2.1.2	Parameters	4
2.1.3	Events	4
2.2	Compared Parameters	5
2.3	Aspect	6
2.4	Star Slots	9
2.4.1	Slot 3	9
2.4.2	Slot 4	10
2.4.3	Slot 5	11
2.4.4	Slot 6	12
2.4.5	Slot 7	13
2.5	FID Slots	14
2.5.1	Slot 0	14
2.5.2	Slot 1	15
2.5.3	Slot 2	16
3	Gratings	17
3.1	LETG Arm	17
A	Summary	19
A.1	Status	19
A.2	Comments	19

1 Front

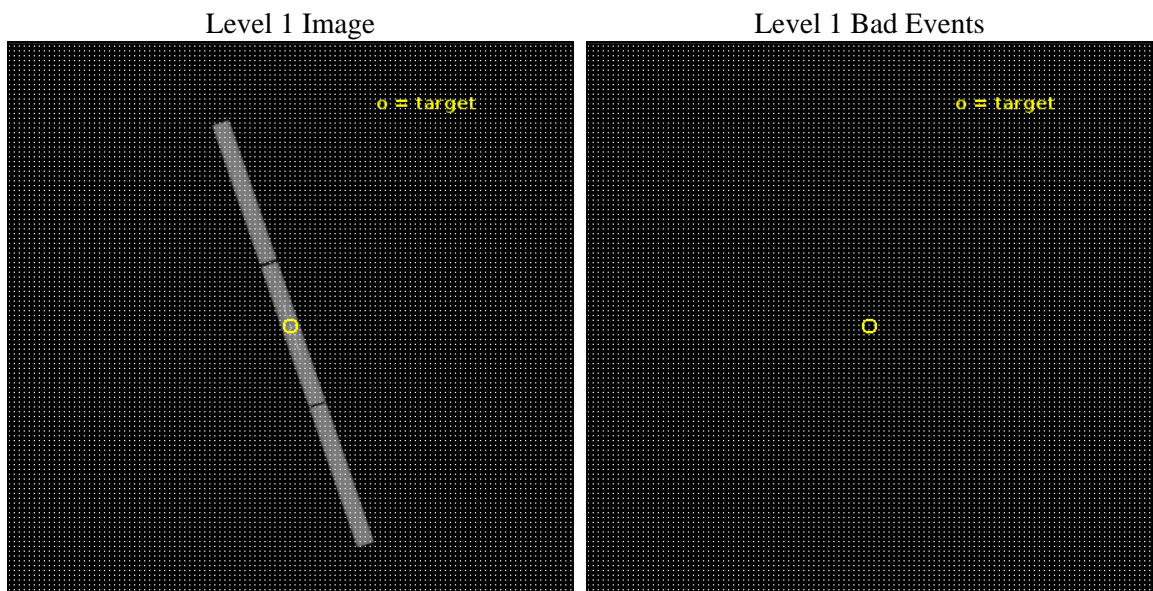
seq_num	291256	Sequence number
obs_id	18361	Observation id
title	AO-17 Internal Cross-Calibration Study	Proposal title
observer	Dr. CXC Calibration	Principal investigator
object	Capella	Source name
ra_targ	79.172917	Observer's specified target RA [deg]
dec_targ	45.996389	Observer's specified target Dec [deg]
ra_nom	79.175011723763	Nominal RA [deg]
dec_nom	46.001039578112	Nominal Dec [deg]
roll_nom	71.663102289089	Nominal Roll [deg]
revision	1	Processing version of data
ontime	10181.581834912	[s]
liveltime	10092.561071476	Ontime multiplied by DTCOR
l2events	819380	Number of level 2 events



2 OBI

2.1 OBI

2.1.1 Images



2.1.2 Parameters

obi_num	0	Obi number	sched_exp_time	10000.000000	[s] Scheduled observation exposure time
ascdsver	10.5	Processing system revision	ontime	10181.581834912	[s]
caldsver	4.7.2	 	l1events	1030994	Number of level 1 events
date	2016-07-27T14:31:52	Date and time of file creation	tgmethod	TGDETECT	Method used to create src1a file
revision	1	Processing version of data	zo_pos	(32812.22, 32630.40)	src1a sky pixel position

2.1.3 Events

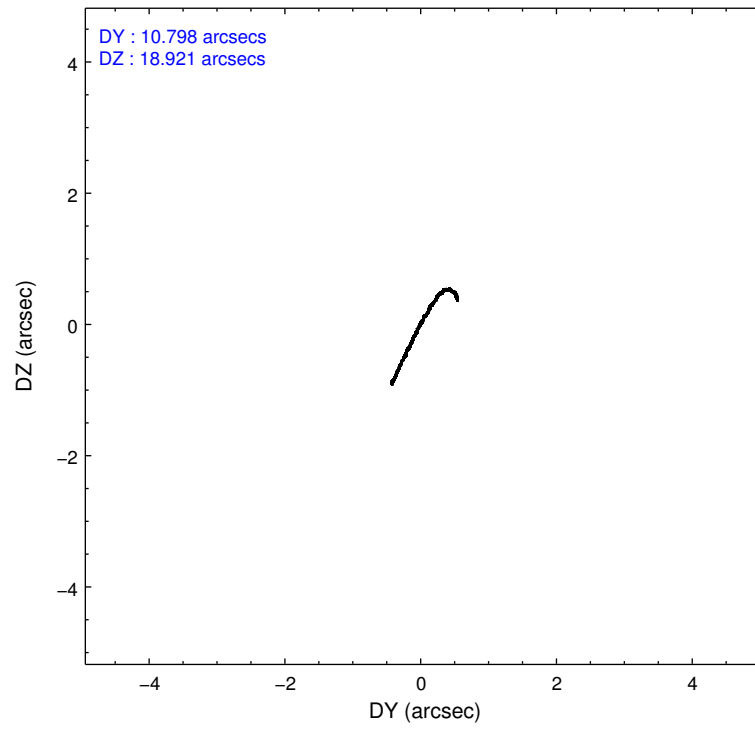
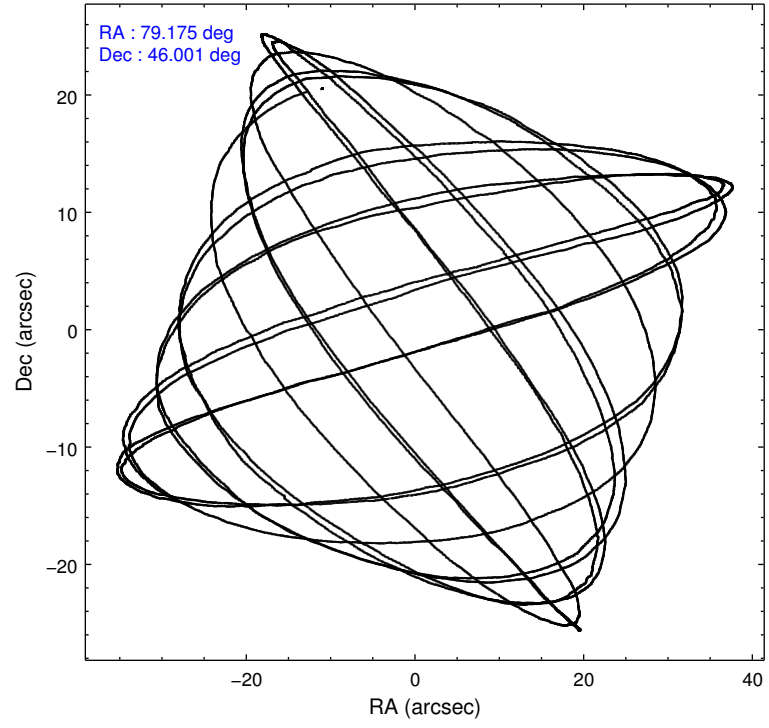
Level 1 Events

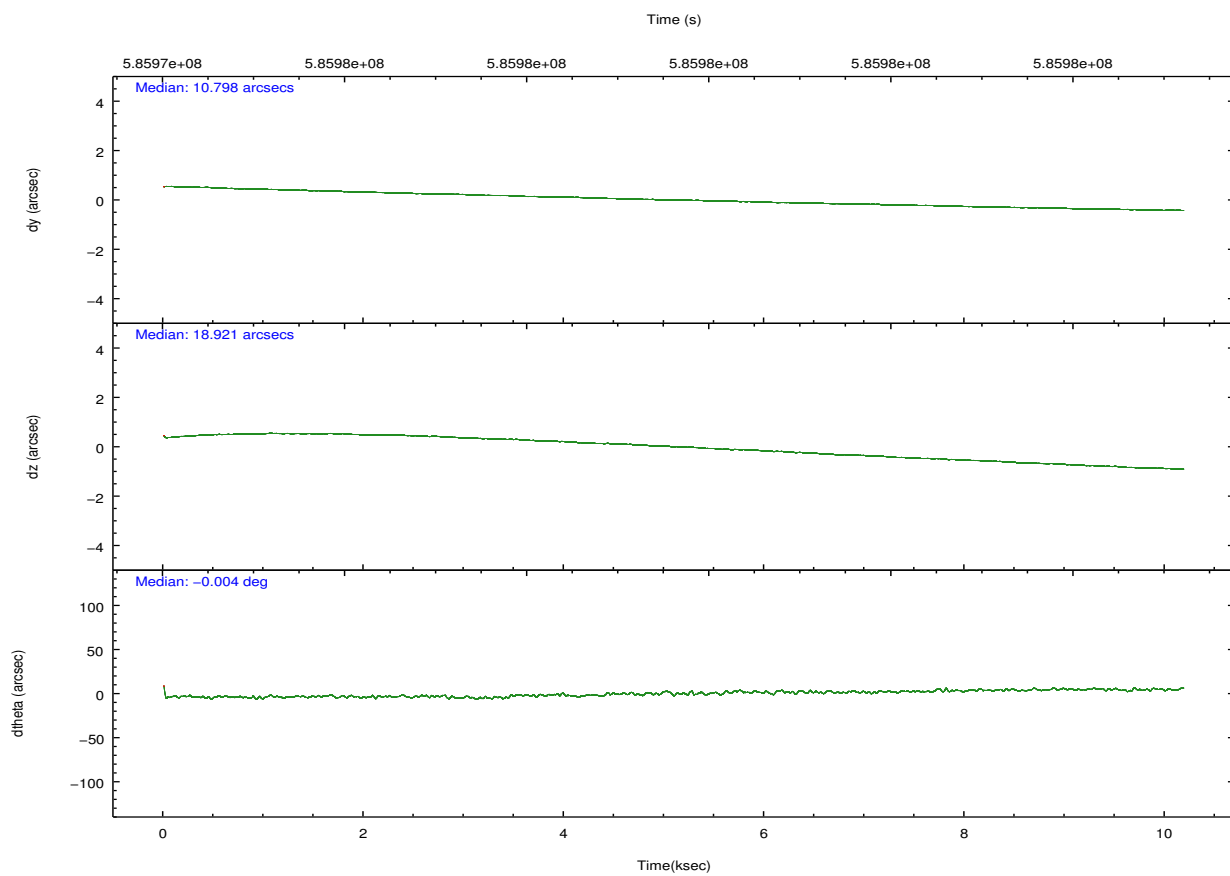
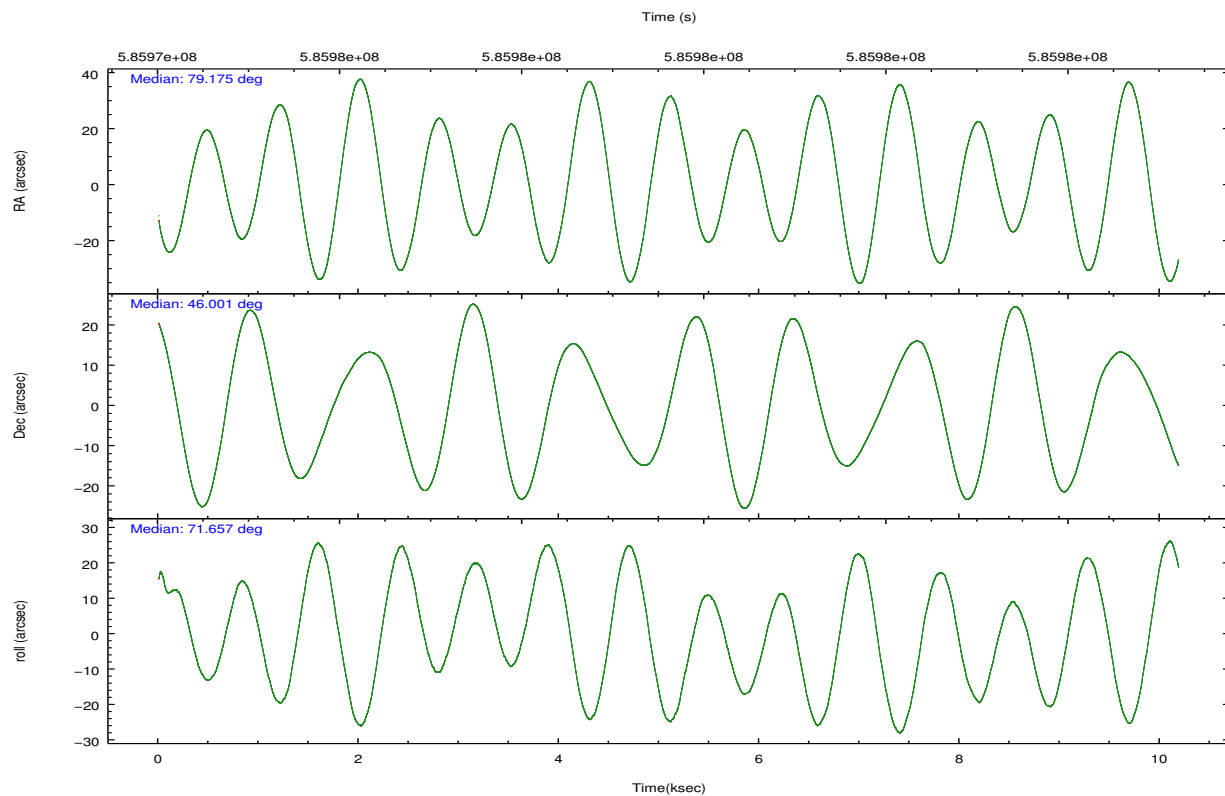
	segment 1	segment 2	segment 3
level 1 events	328758	376960	325276
rejected events	8968	9454	8712
rejected %	2%	2%	2%

2.2 Compared Parameters

Parameter	Planned	Actual	Parameter	Planned	Actual
Instrument	HRC	HRC	Obspar format version number	7	7
Detector	HRC-S	HRC-S	Obspar file type	PREDICTED	ACTUAL
Grating	LETG	LETG	Obspar update status	NONE	UPDATED
Data mode	OBSERVING	OBSERVING			
Observation mode	POINTING	POINTING			
[deg] Pointing RA	79.185532	79.17501172376296			
[deg] Pointing Dec	45.973099	46.00103957811158			
[deg] Pointing Roll	71.588191	71.66310228908893			
[mm] SIM focus pos	-1.429586	-1.428180813131781			
[mm] SIM defocus	0.1037507710433287	0.1051558262725154			
[mm] SIM translation stage pos	250.455976	250.466033080201			
[mm] SIM translation stage offset	0	-0.01005468664627074			
[s] Observation start time (MET)	585974723.184000	585974258.12716			
Observation start date	2016-07-27T02:44:15	2016-07-27T02:37:38			
[s] Observation end time (MET)	585984723.184000	585984986.80277			
Observation end date	2016-07-27T05:30:55	2016-07-27T05:36:26			

2.3 Aspect



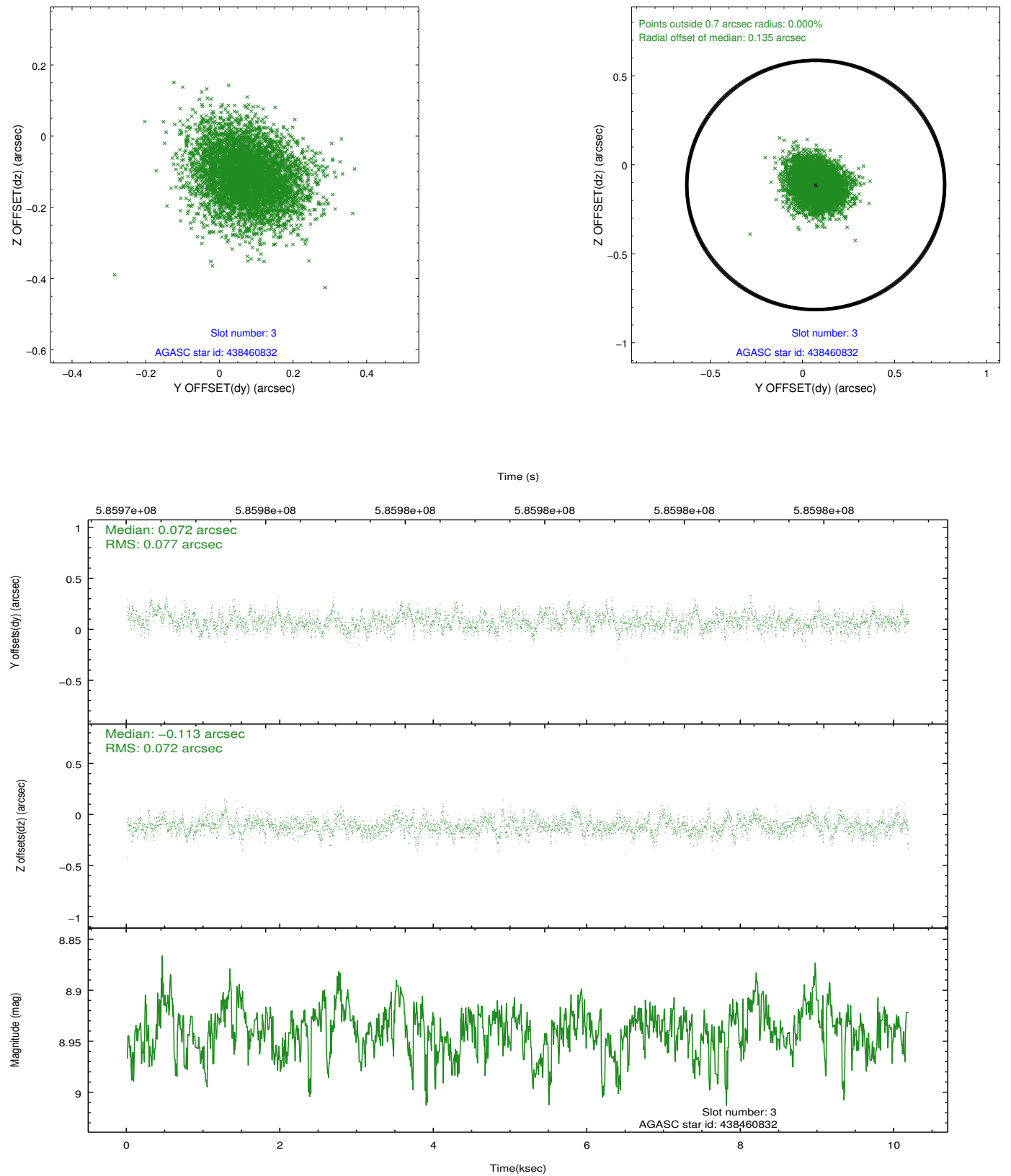


Slot Statistics

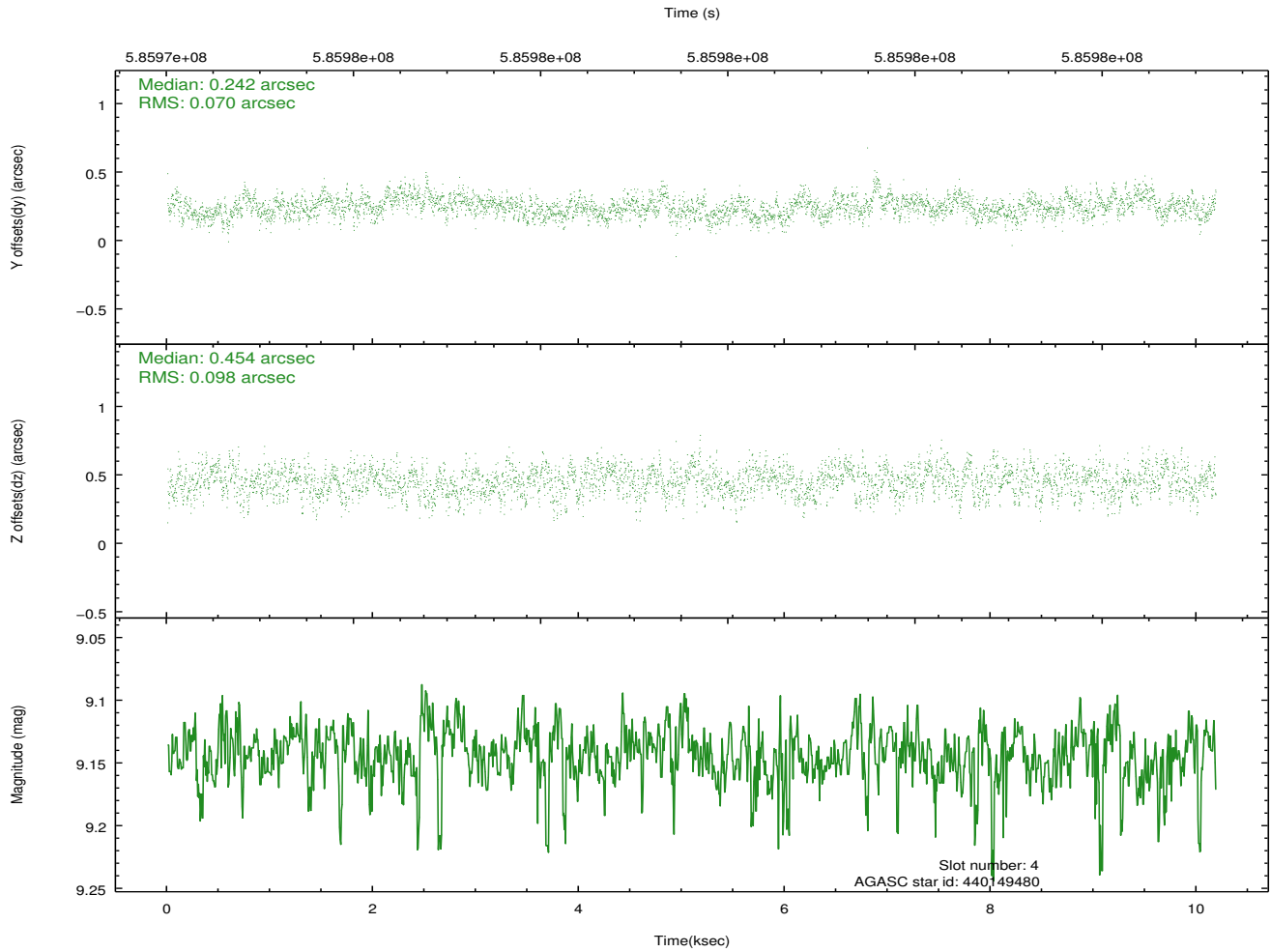
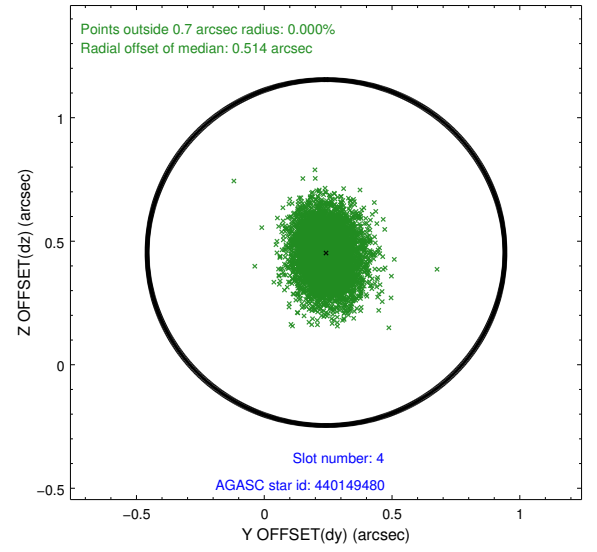
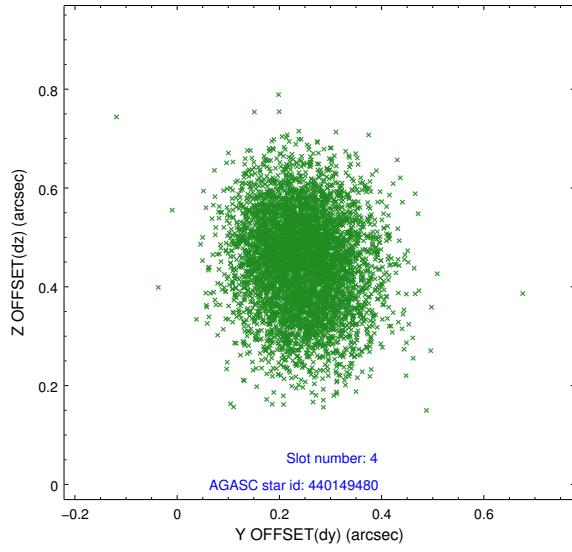
slot	status	used	id	mag	n_pts	med_dy	med_dz	dr1	dr2	ra	dec	mean_y	mean_z
0	FID		HRC-S-1	7.02	2482	-0.006	-0.236	0.027	0.053	0.000000	0.000000	-1165.17	-467.90
1	FID		HRC-S-3	7.02	2483	0.053	-0.019	0.027	0.056	0.000000	0.000000	-1168.32	561.64
2	FID		HRC-S-4	6.98	2482	0.342	-0.042	0.010	0.019	0.000000	0.000000	1232.96	564.64
3	GUIDE	used	438460832	8.94	4964	0.072	-0.113	0.112	0.182	78.414614	45.554782	-2033.83	1370.51
4	GUIDE	used	440149480	9.14	4965	0.242	0.454	0.128	0.208	79.794341	45.220426	-2077.34	-2318.44
5	GUIDE	used	440150048	7.10	4968	-0.327	-0.320	0.101	0.163	79.112838	46.416060	1455.74	674.14
6	GUIDE	used	438461584	9.21	4958	-0.076	-0.153	0.153	0.265	78.061532	45.583834	-2205.02	2250.33
7	GUIDE	used	440163960	8.86	4967	0.082	0.131	0.124	0.201	79.298370	45.827072	-408.79	-434.29

2.4 Star Slots

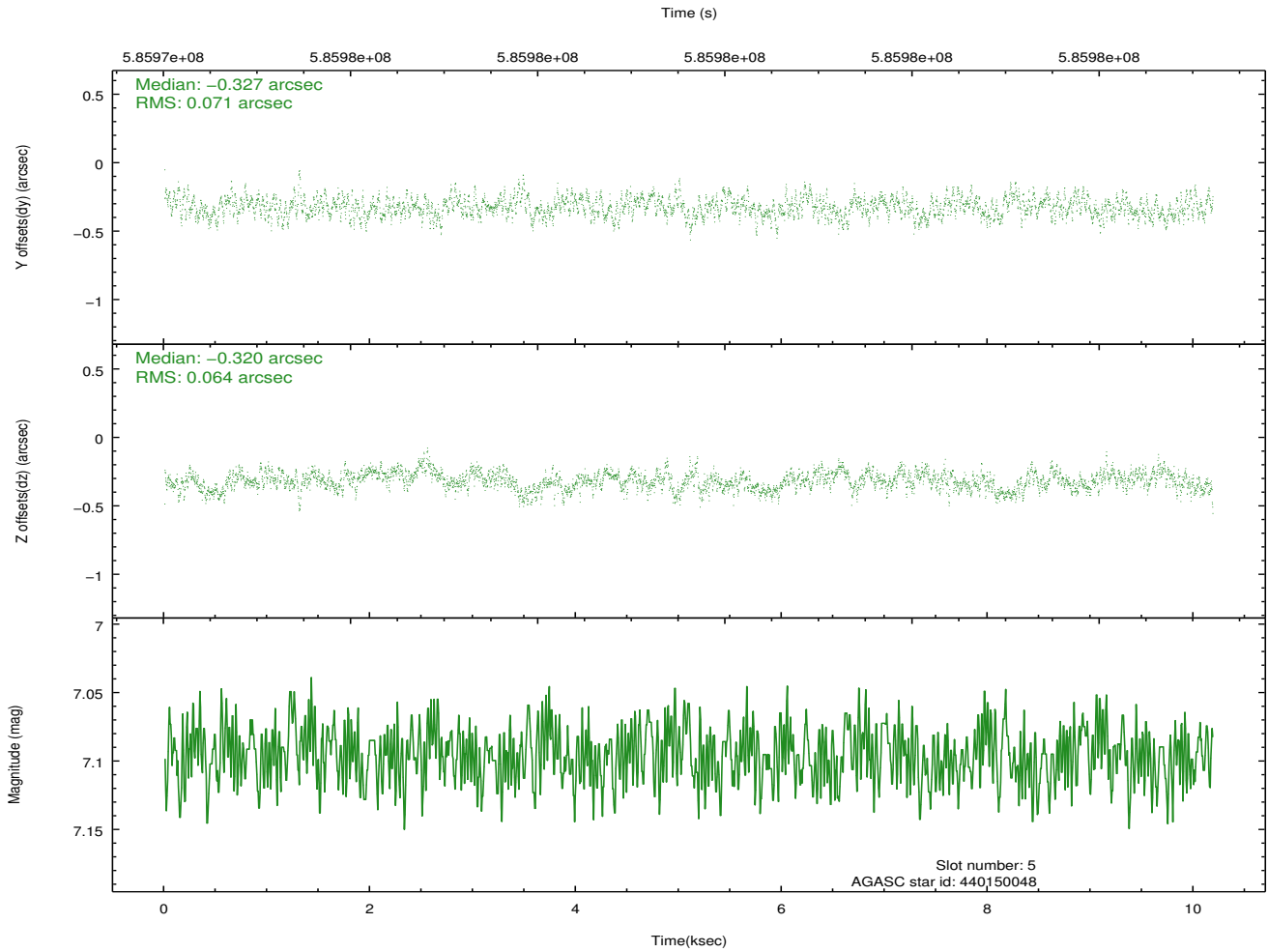
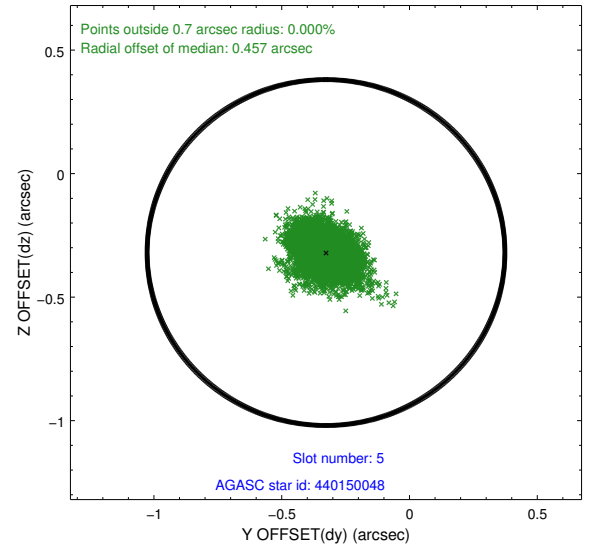
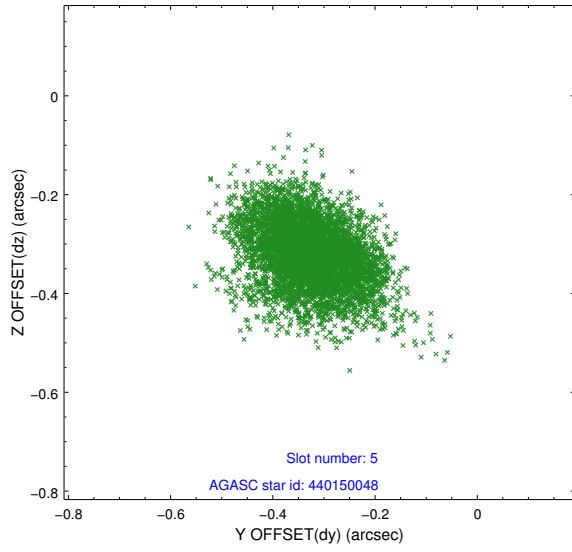
2.4.1 Slot 3



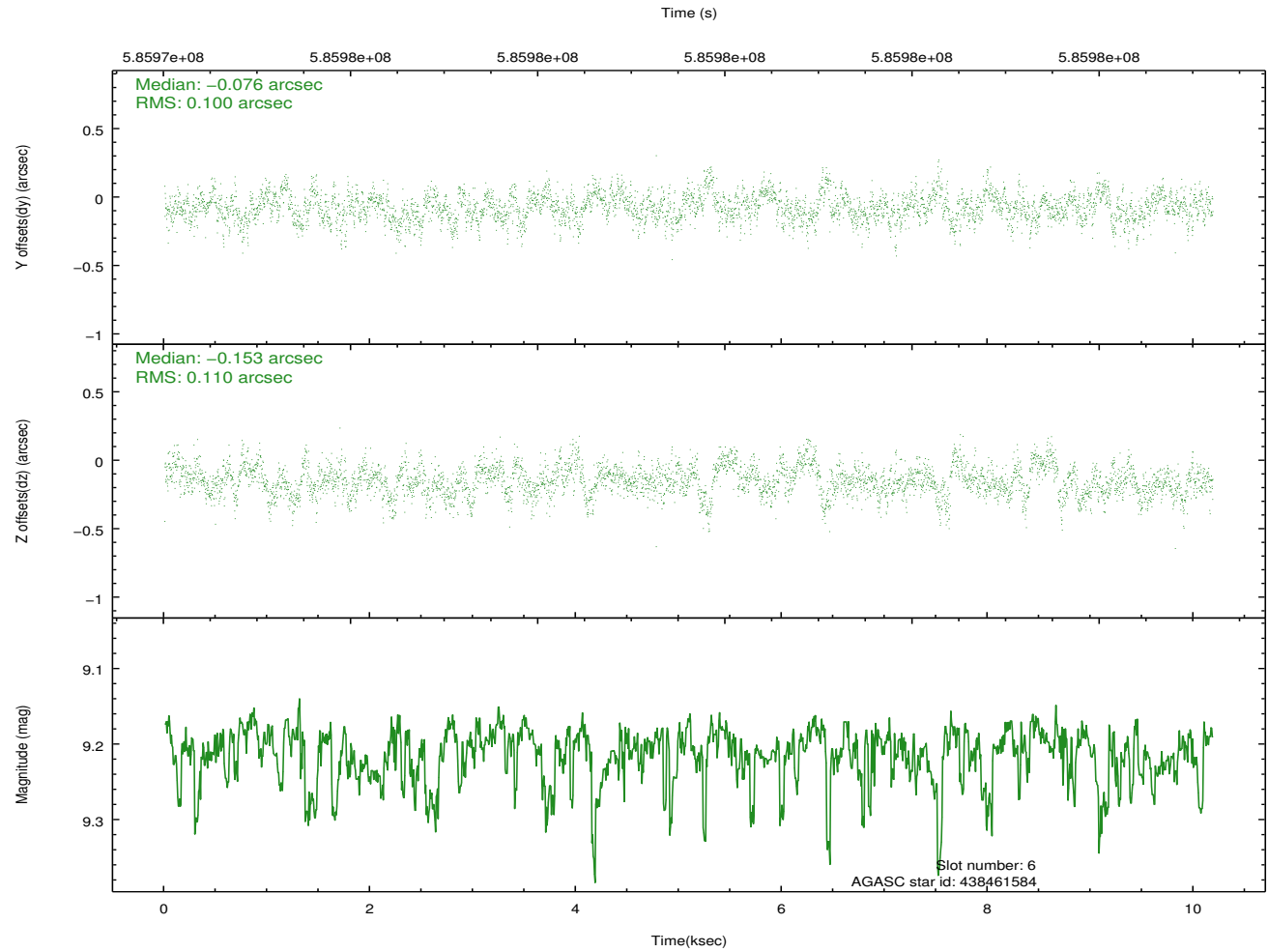
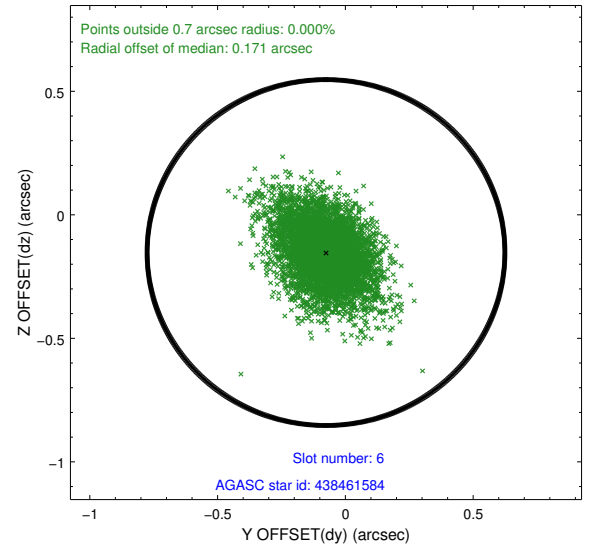
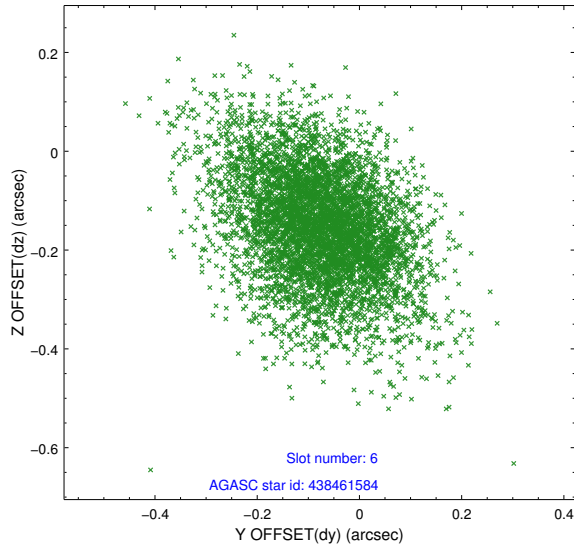
2.4.2 Slot 4



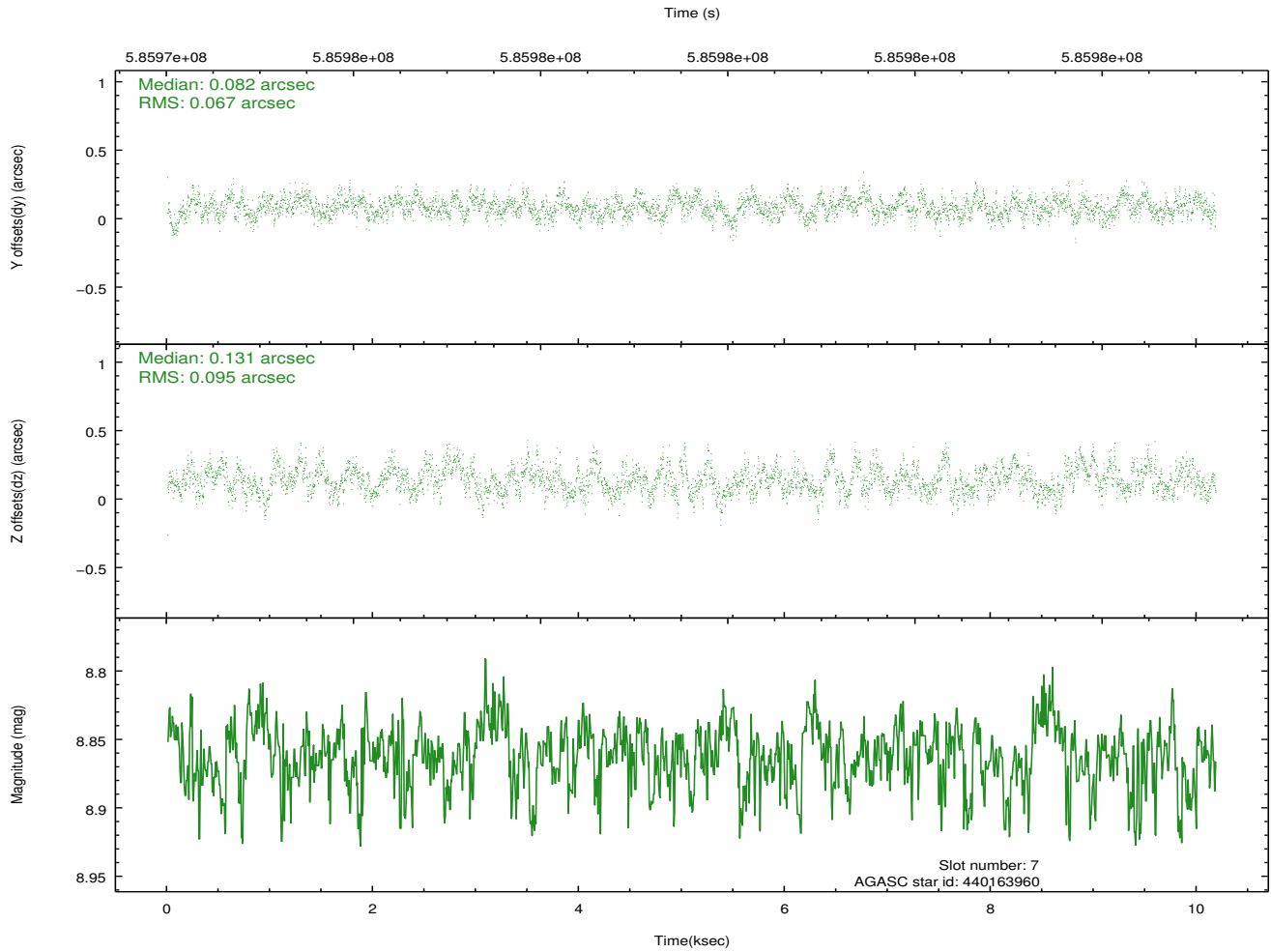
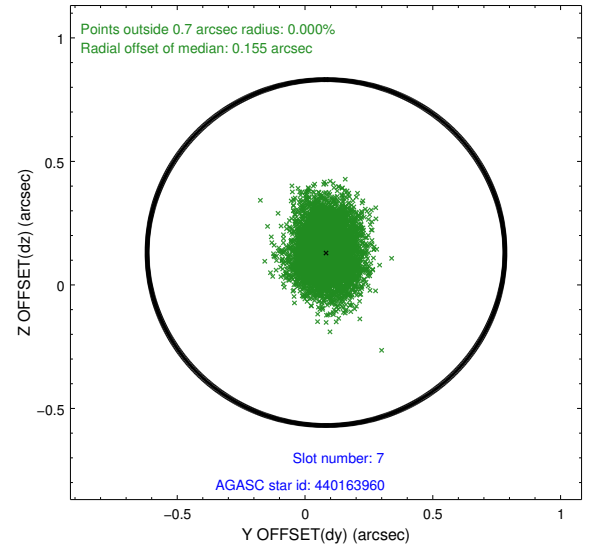
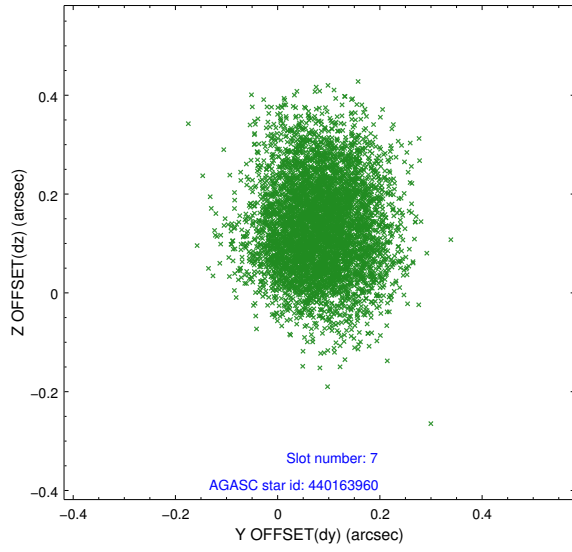
2.4.3 Slot 5



2.4.4 Slot 6

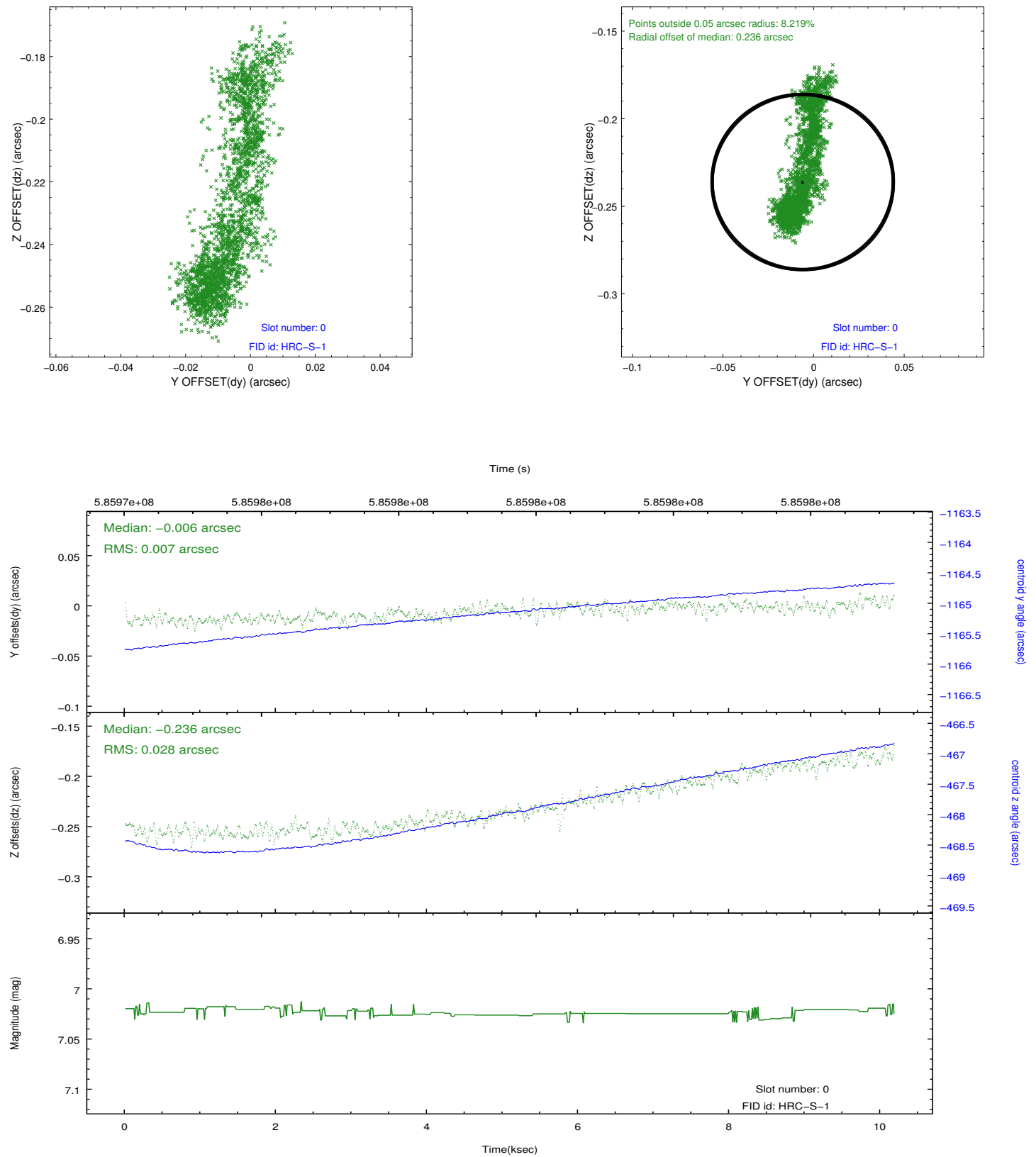


2.4.5 Slot 7

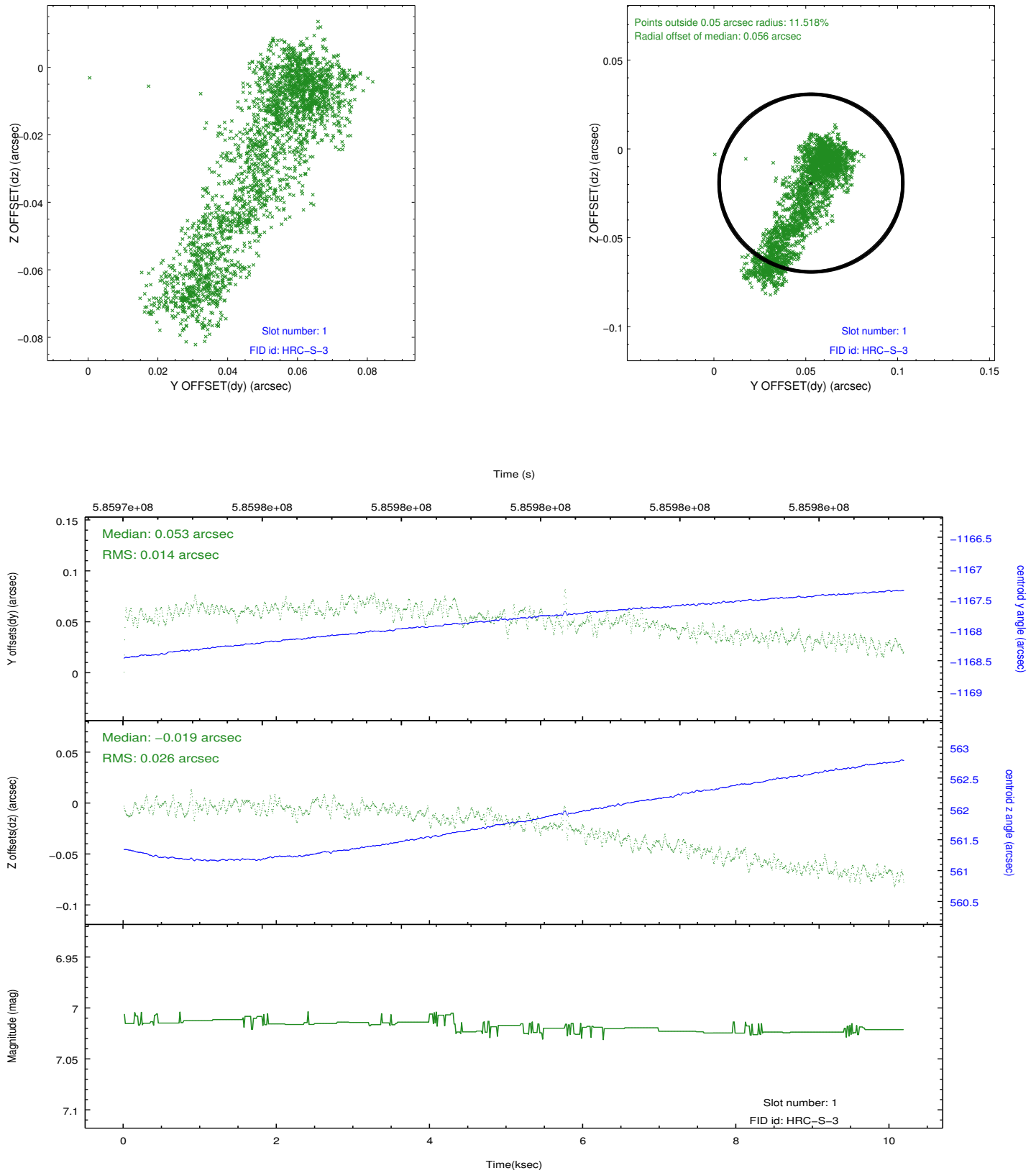


2.5 FID Slots

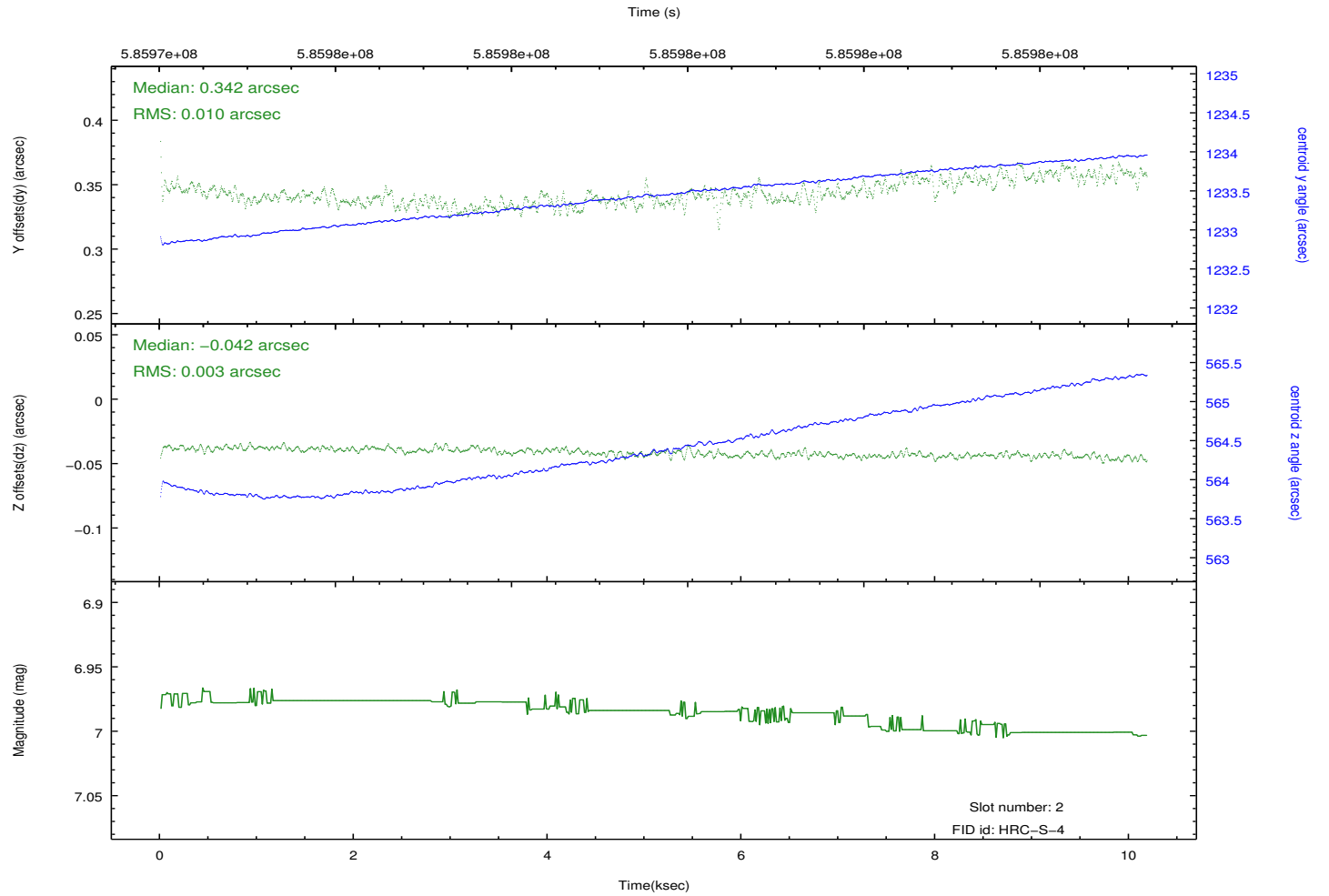
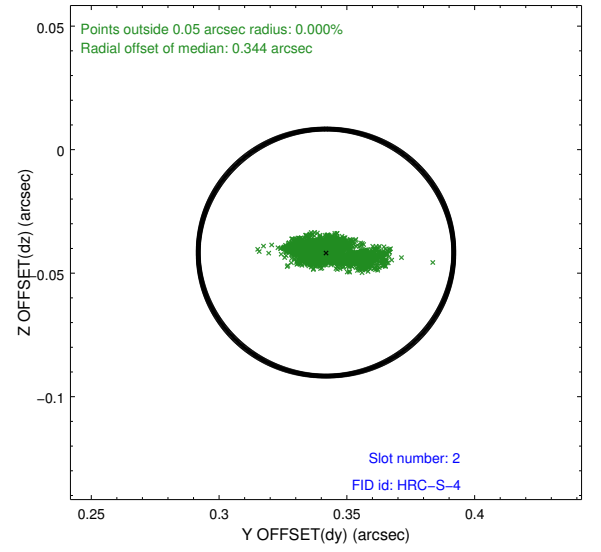
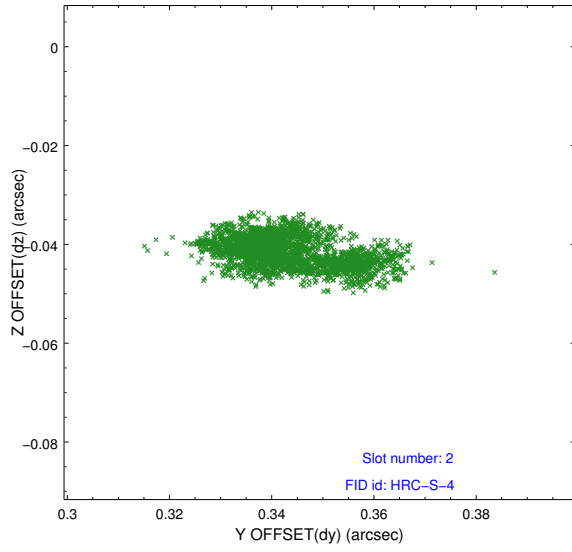
2.5.1 Slot 0



2.5.2 Slot 1

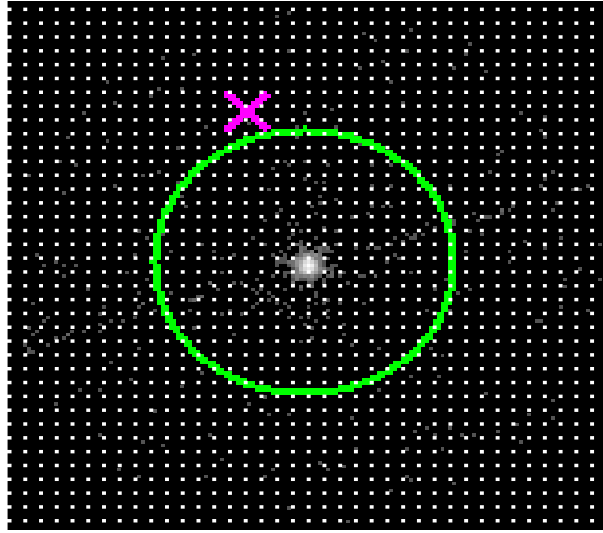


2.5.3 Slot 2

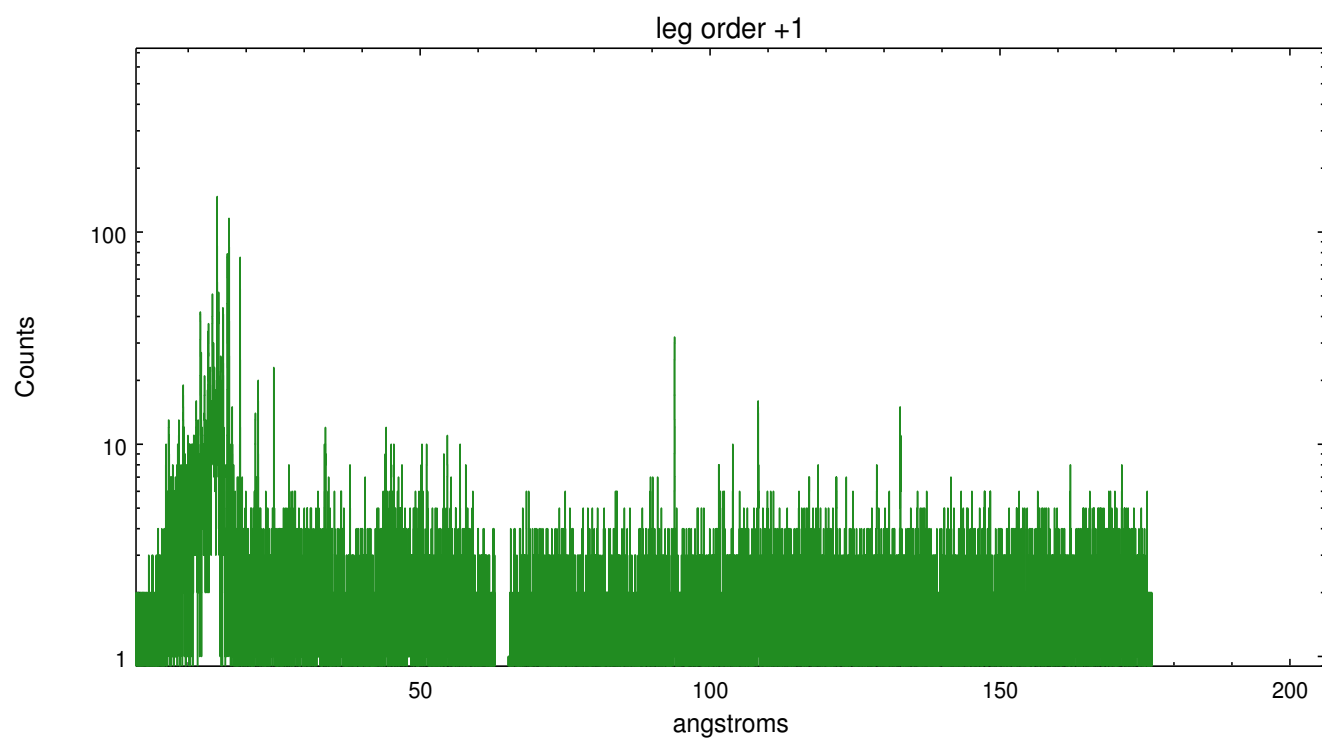
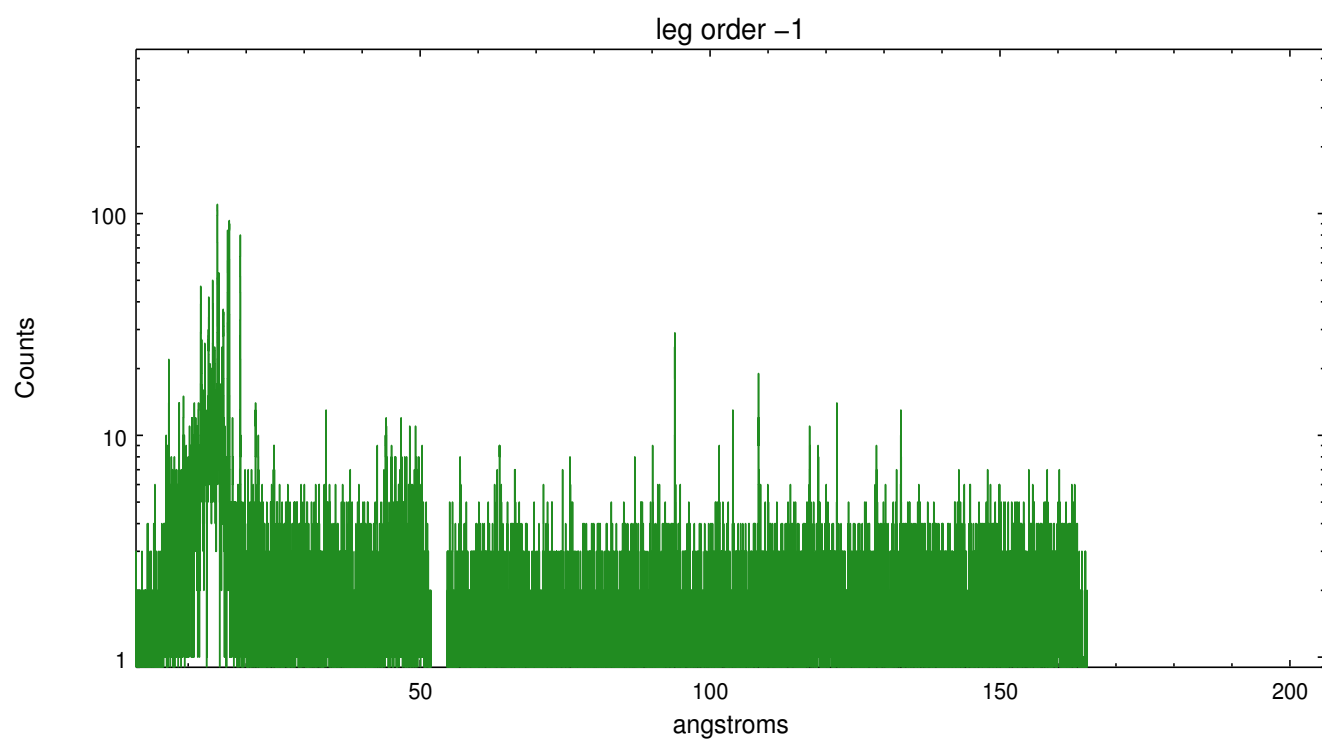


3 Gratings

3.1 LETG Arm



LETG Zero Order



A Summary

A.1 Status

V&V Scientist	Joy Nichols
V&V Date (YYYY-MM-DD)	2016.07.28
V&V Edition	1
V&V Disposition and Status	OK
V&V Charge Time	10.181581834912

A.2 Comments