

V&V Reference Report

L2 ASCDS Version : 10.3.3

Observation 17411 - L2 Version 1
Chandra X-Ray Center

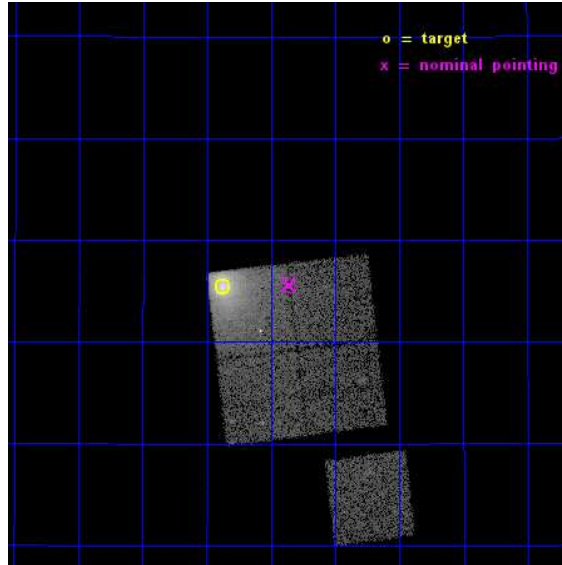
L2 Processing Date : Apr 15 2015

Contents

1	Front	2
2	OBI	3
2.1	OBI	3
2.1.1	Images	3
2.1.2	Bias	3
2.1.3	Parameters	4
2.1.4	Events	4
2.2	Compared Parameters	5
2.3	Aspect	6
2.4	Star Slots	9
2.4.1	Slot 3	9
2.4.2	Slot 4	10
2.4.3	Slot 5	11
2.4.4	Slot 6	12
2.4.5	Slot 7	13
2.5	FID Slots	14
2.5.1	Slot 0	14
2.5.2	Slot 1	15
2.5.3	Slot 2	16
A	Summary	17
A.1	Status	17
A.2	Comments	17

1 Front

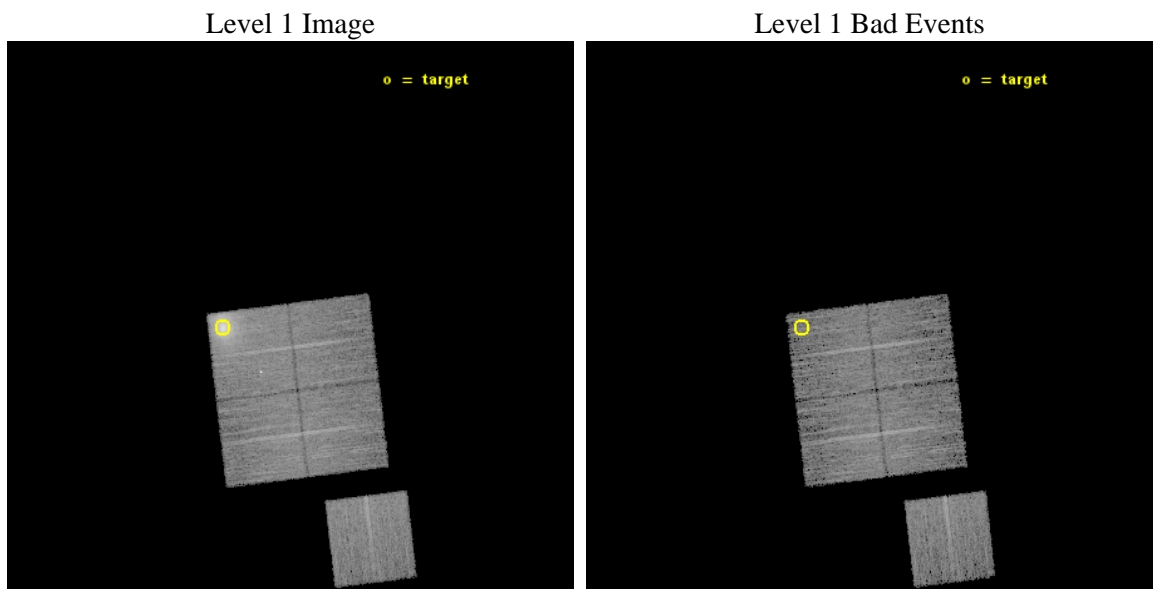
seq_num	890111	Sequence number
obs_id	17411	Observation id
title	AO-16 Calibration Observations of A1795	Proposal title
observer	Dr. CXC Calibration	Principal investigator
object	A1795	Source name
dtcycle	0	
cycle	P	events from which exps? Prim/Second/Both
ra_targ	207.219583	Observer's specified target RA [deg]
dec_targ	26.590833	Observer's specified target Dec [deg]
ra_nom	207.08911368607	Nominal RA [deg]
dec_nom	26.593831464486	Nominal Dec [deg]
roll_nom	173.03307747775	Nominal Roll [deg]
revision	1	Processing version of data
ontime	14080.200108409	Sum of GTIs [s]
livetime	13896.2319283	Livetime [s]
ontime0	14080.200108409	Sum of GTIs [s]
ontime1	14080.200108409	Sum of GTIs [s]
ontime2	14077.059058189	Sum of GTIs [s]
ontime3	14080.200108409	Sum of GTIs [s]
ontime6	14080.200108409	Sum of GTIs [s]
l2events	87767	Number of level 2 events



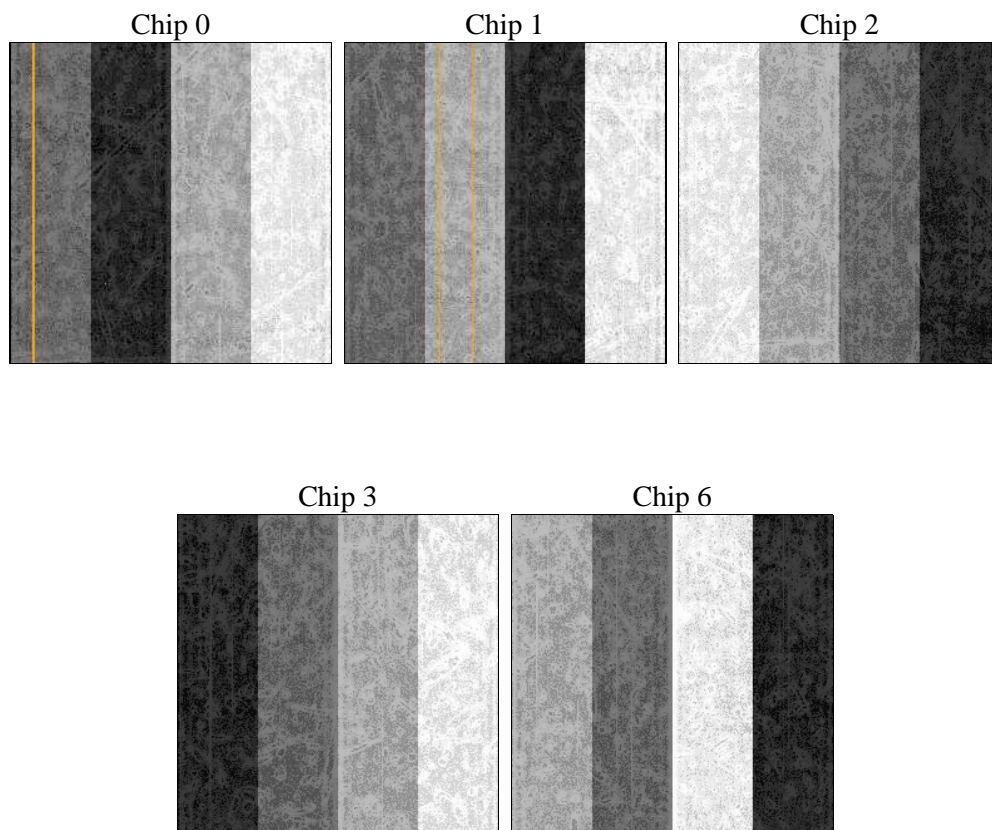
2 OBI

2.1 OBI

2.1.1 Images



2.1.2 Bias



2.1.3 Parameters

obi_num	1	Obi number	sched_exp_time	14000.000000	[s] Scheduled observation exposure time
ascdsver	10.3.3	Processing system revision	ontime	14080.200108409	Sum of GTIs [s]
caldbver	4.6.7	 	ontime0	14080.200108409	Sum of GTIs [s]
date	2015-04-15T16:31:51	Date and time of file creation	ontime1	14080.200108409	Sum of GTIs [s]
revision	1	Processing version of data	ontime2	14077.059058189	Sum of GTIs [s]
			ontime3	14080.200108409	Sum of GTIs [s]
			ontime6	14080.200108409	Sum of GTIs [s]
			l1events	377287	Number of level 1 events

2.1.4 Events

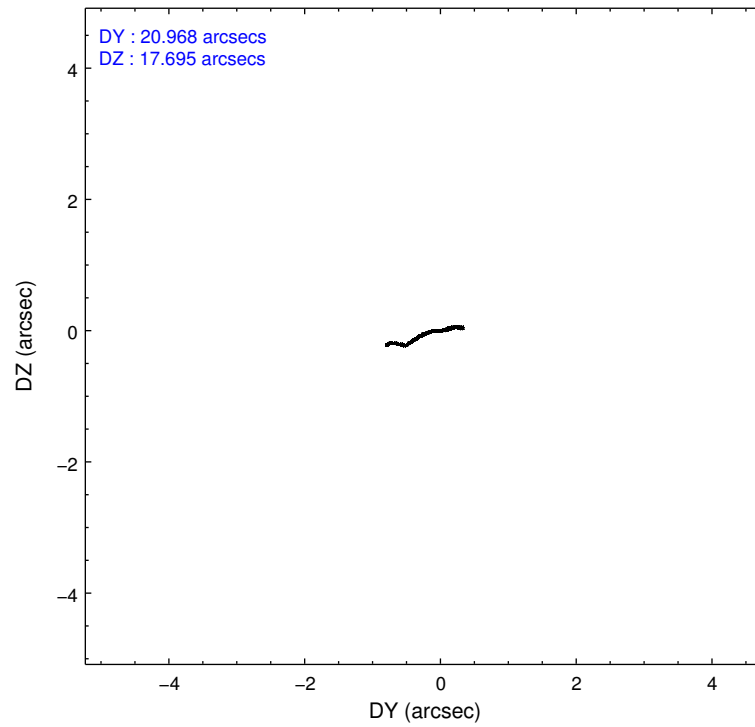
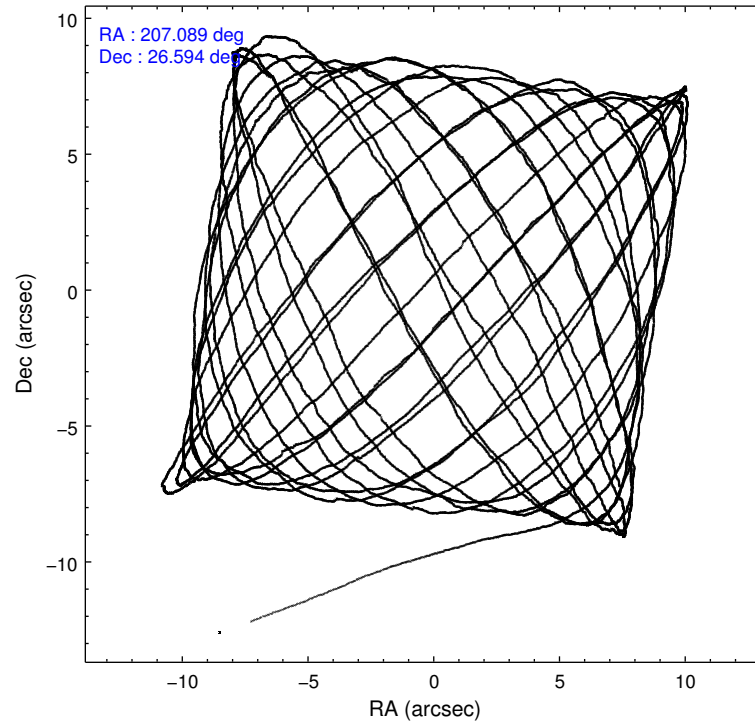
	ccd 0	ccd 1	ccd 2	ccd 3	ccd 6
level 1 events	59772	118872	64214	68327	66102
rejected events	50954	55671	56733	59659	58531
rejected %	85%	46%	88%	87%	88%

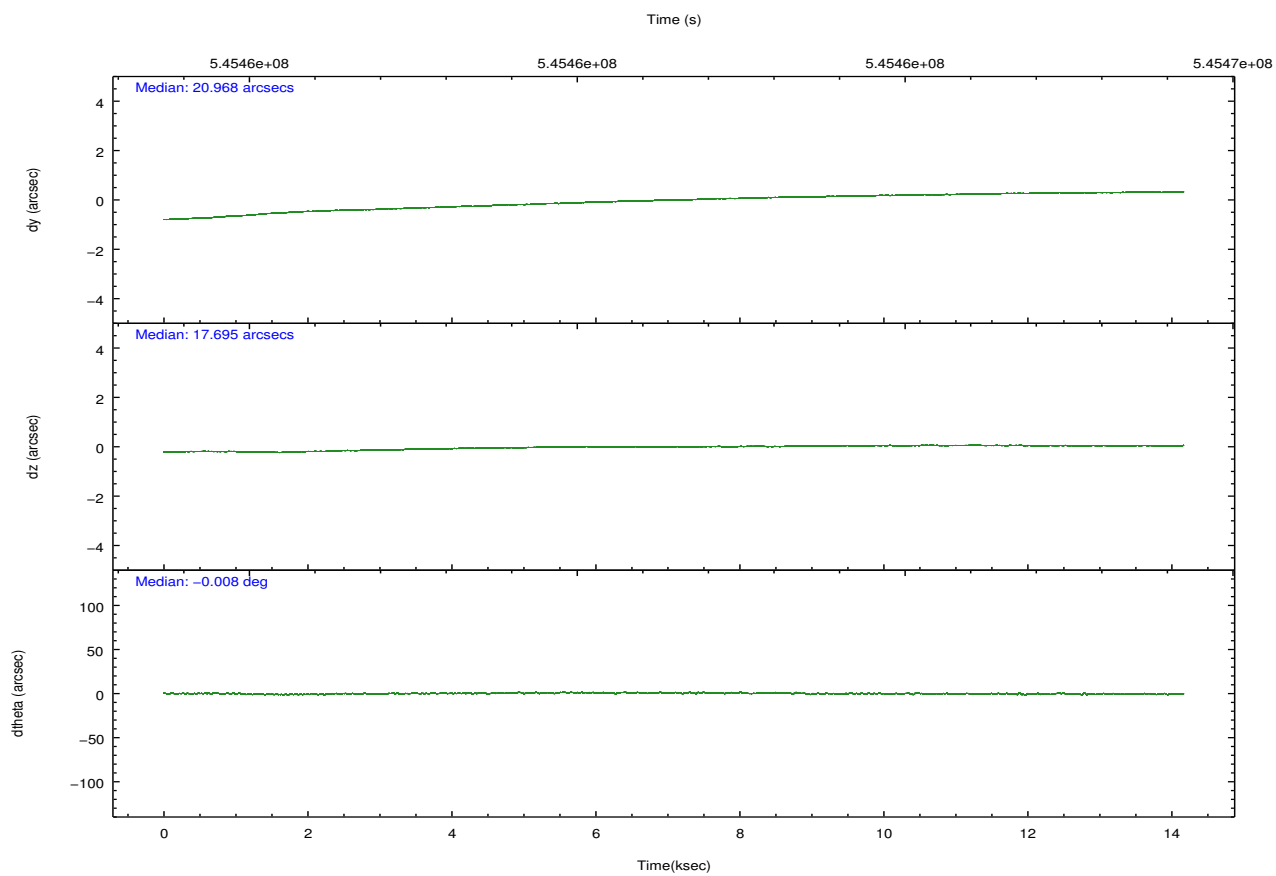
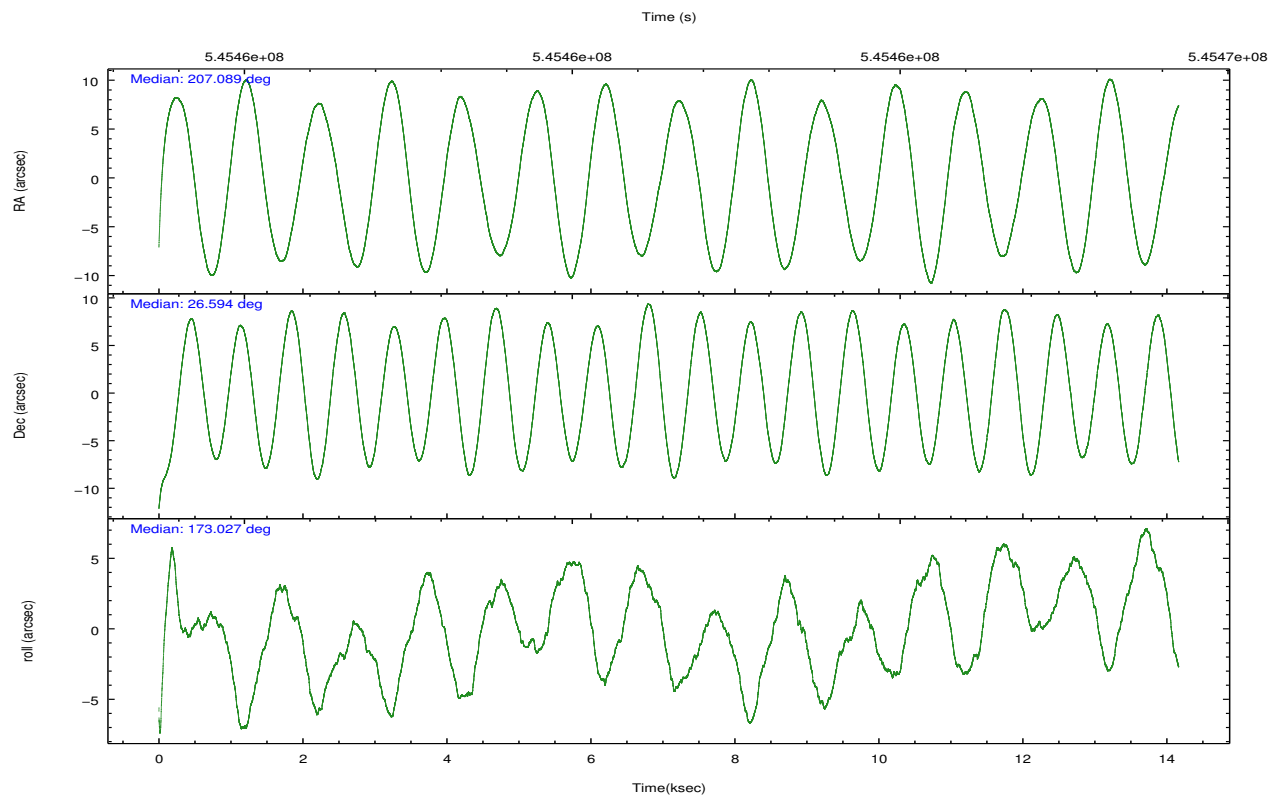
	ccd 0	ccd 1	ccd 2	ccd 3	ccd 6
grade 0 events	3482	45804	2752	3459	2542
	5%	38%	4%	5%	3%
grade 1 events	39	189	36	45	28
	0%	0%	0%	0%	0%
grade 2 events	2049	8256	1820	1838	1654
	3%	6%	2%	2%	2%
grade 3 events	857	2787	691	870	788
	1%	2%	1%	1%	1%
grade 4 events	777	2686	743	843	767
	1%	2%	1%	1%	1%
grade 5 events	3102	3397	2880	3461	3433
	5%	2%	4%	5%	5%
grade 6 events	1655	3683	1478	1660	1822
	2%	3%	2%	2%	2%
grade 7 events	47811	52070	53814	56151	55068
	79%	43%	83%	82%	83%

2.2 Compared Parameters

Parameter	Planned	Actual	Parameter	Planned	Actual
Instrument	ACIS	ACIS	Obspar format version number	7	7
Detector	ACIS-01236	ACIS-01236	Obspar file type	PREDICTED	ACTUAL
Grating	NONE	NONE	Obspar update status	NONE	UPDATED
Data mode	VFAINT	VFAINT	Number of optional ACIS chips dropped	0	0
Observation mode	POINTING	POINTING	On-chip summing requested	N	N
[deg] Pointing RA	207.117465	207.0891136860733	Subarray requested	NONE	NONE
[deg] Pointing Dec	26.604743	26.59383146448623	Alternating exposures requested	N	N
[deg] Pointing Roll	172.811704	173.0330774777495	[s] Primary exposure time	0.000000	3.1
[s] Window start time (MET)	544233667.184000	544233667.184000			
[s] Window stop time (MET)	546739267.184000	546739267.184000			
[mm] SIM focus pos	-0.782348	-0.7809083437167272			
[mm] SIM defocus	0	0.001439871863259334			
[mm] SIM translation stage pos	-254.359963	-254.3657361129205			
[mm] SIM translation stage offset	20.7675	20.77328310999084			
[s] Observation start time (MET)	545454564.184000	545453423.12986			
Observation start date	2015-04-15T03:08:17	2015-04-15T02:50:23			
[s] Observation end time (MET)	545468564.184000	545469194.29324			
Observation end date	2015-04-15T07:01:37	2015-04-15T07:13:14			
Read mode	TIMED	TIMED			

2.3 Aspect



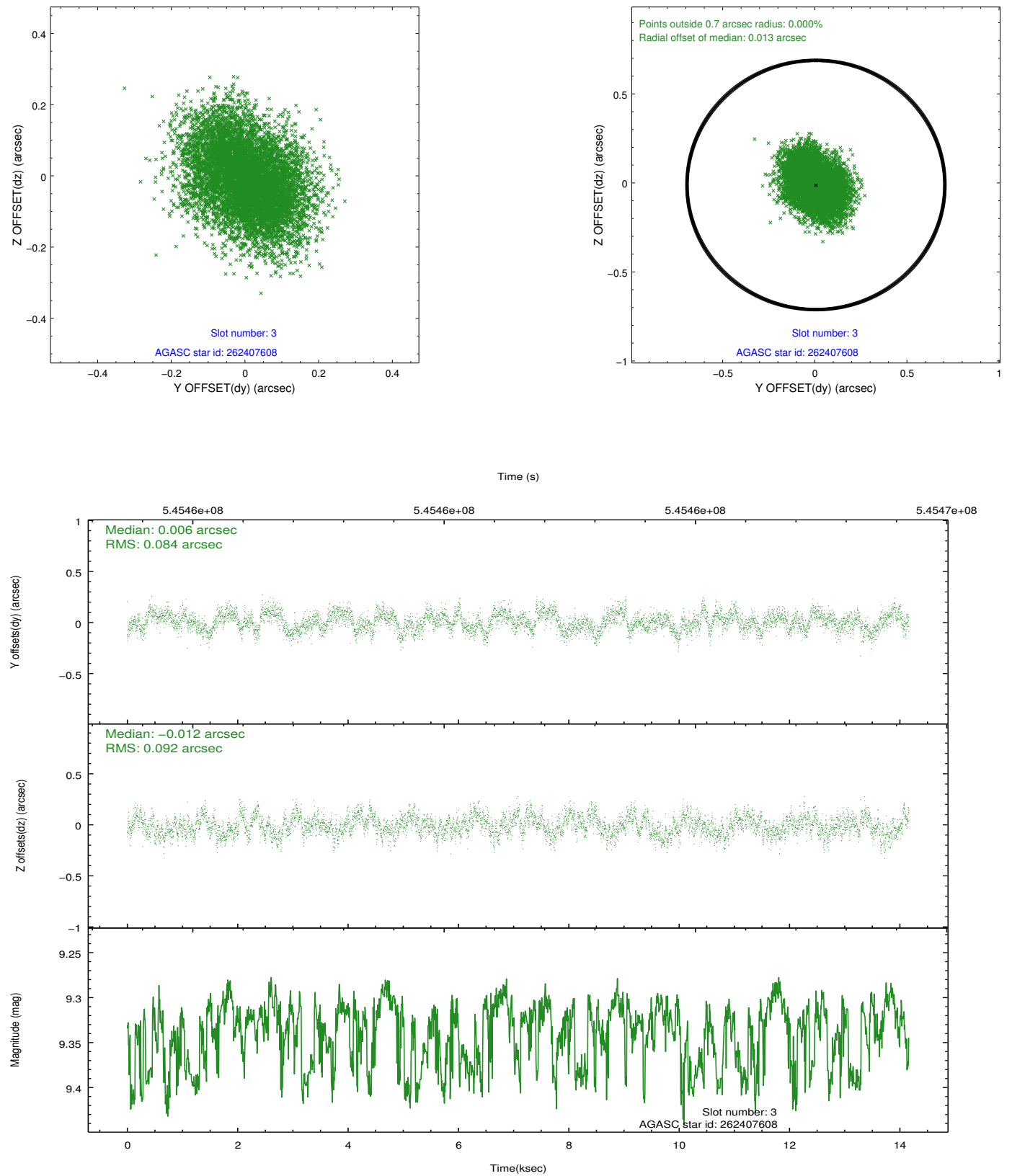


Slot Statistics

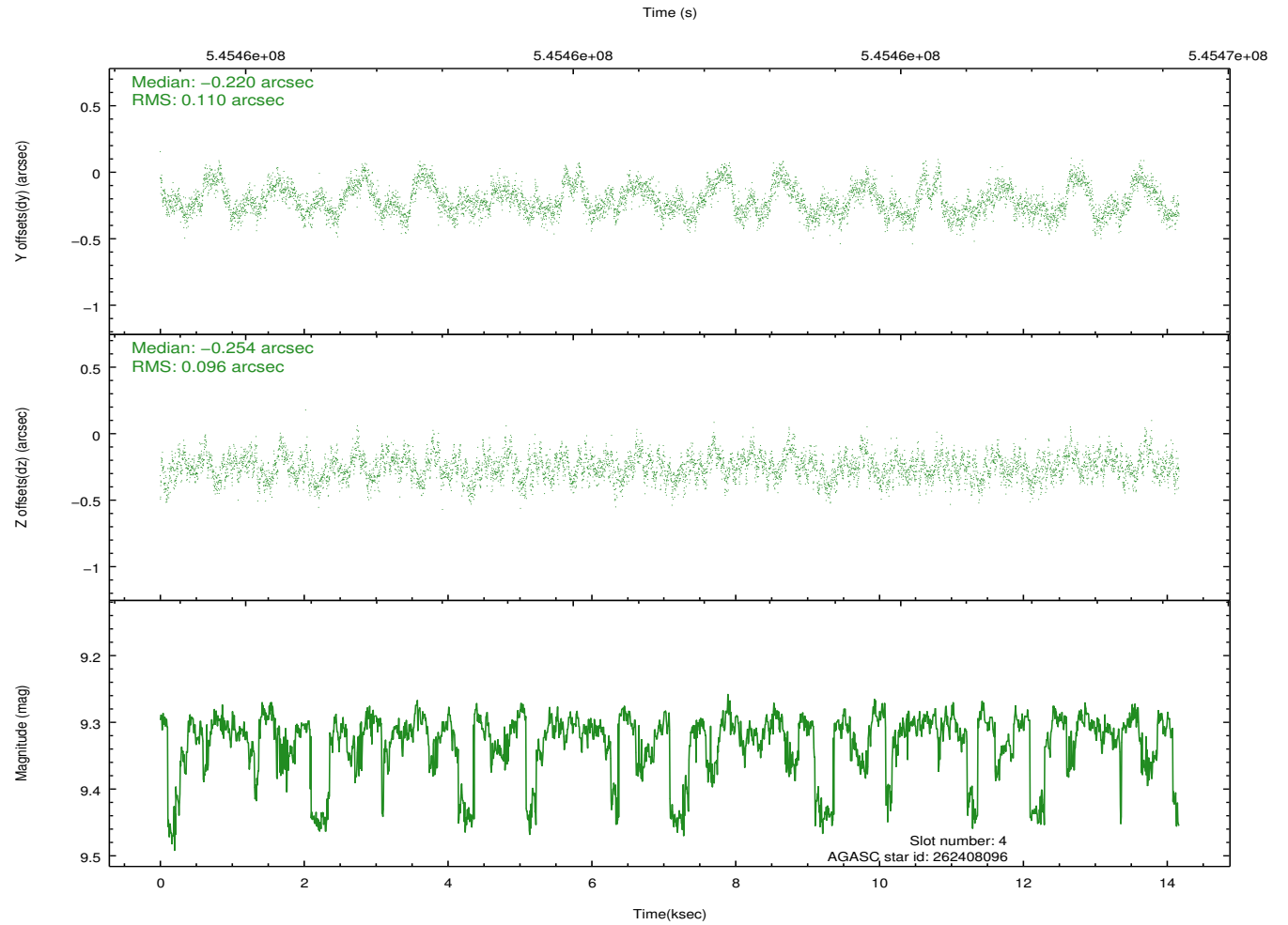
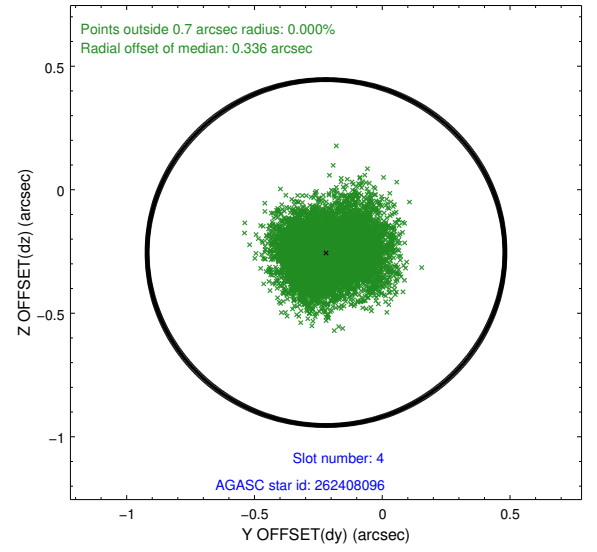
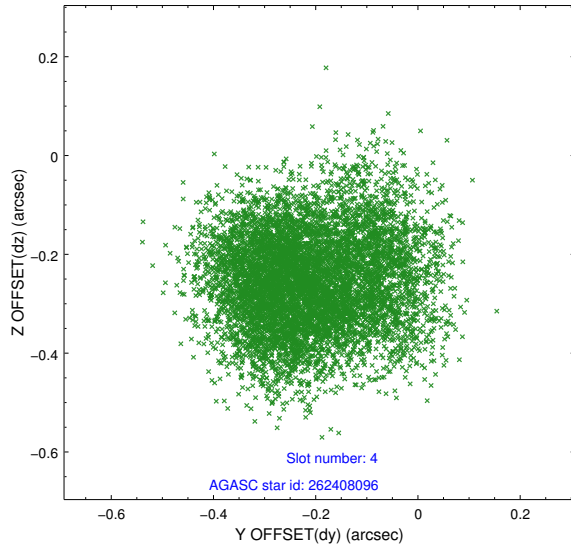
slot	status	used	id	mag	n_pts	med_dy	med_dz	dr1	dr2	ra	dec	mean_y	mean_z
0	FID		ACIS-I-1	7.26	3454	-0.060	0.178	0.010	0.017	0.000000	0.000000	918.78	-414.22
1	FID		ACIS-I-5	7.16	3454	-0.195	-0.021	0.011	0.016	0.000000	0.000000	-1829.48	1482.73
2	FID		ACIS-I-6	7.15	3455	0.164	-0.087	0.009	0.015	0.000000	0.000000	383.92	2127.75
3	GUIDE	used	262407608	9.34	6910	0.006	-0.012	0.134	0.213	207.378401	26.435507	-910.47	498.44
4	GUIDE	used	262408096	9.32	6910	-0.220	-0.254	0.158	0.247	207.011678	26.515421	298.51	361.35
5	GUIDE	used	262408512	7.99	6910	0.049	0.234	0.101	0.152	207.800210	27.128796	-1932.78	-2151.17
6	GUIDE	used	262409552	8.18	6910	0.059	0.088	0.124	0.199	206.584269	27.192805	1959.91	-1889.99
7	GUIDE	used	262275256	7.74	6910	0.089	-0.052	0.089	0.155	206.467522	27.226414	2346.06	-1965.41

2.4 Star Slots

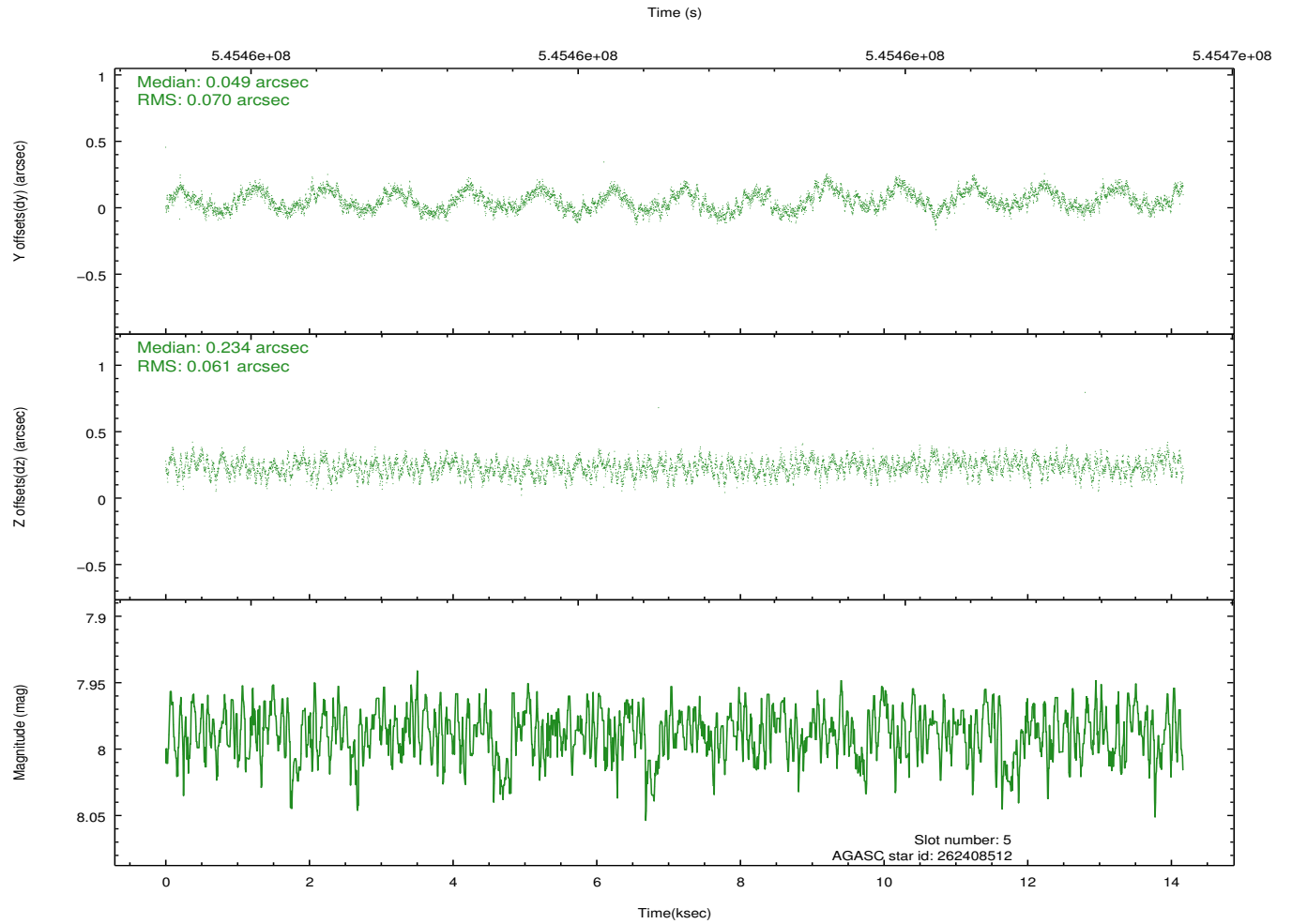
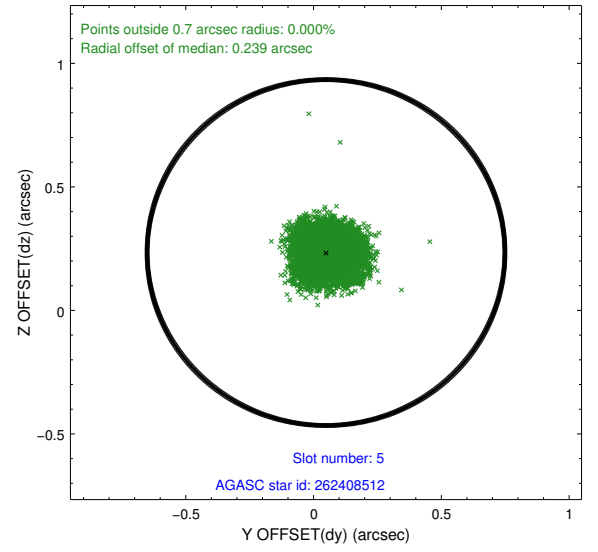
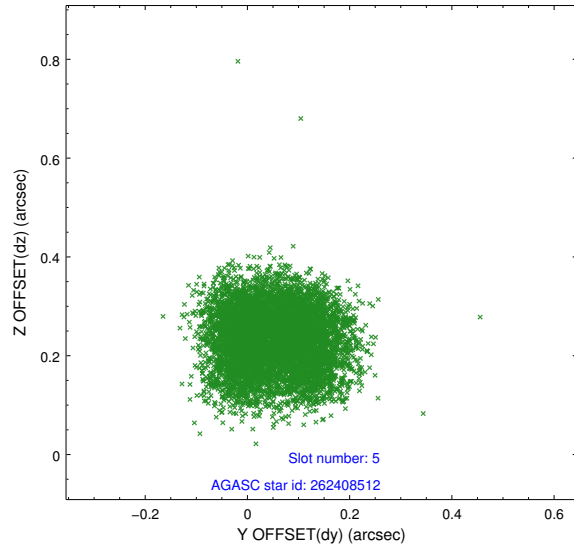
2.4.1 Slot 3



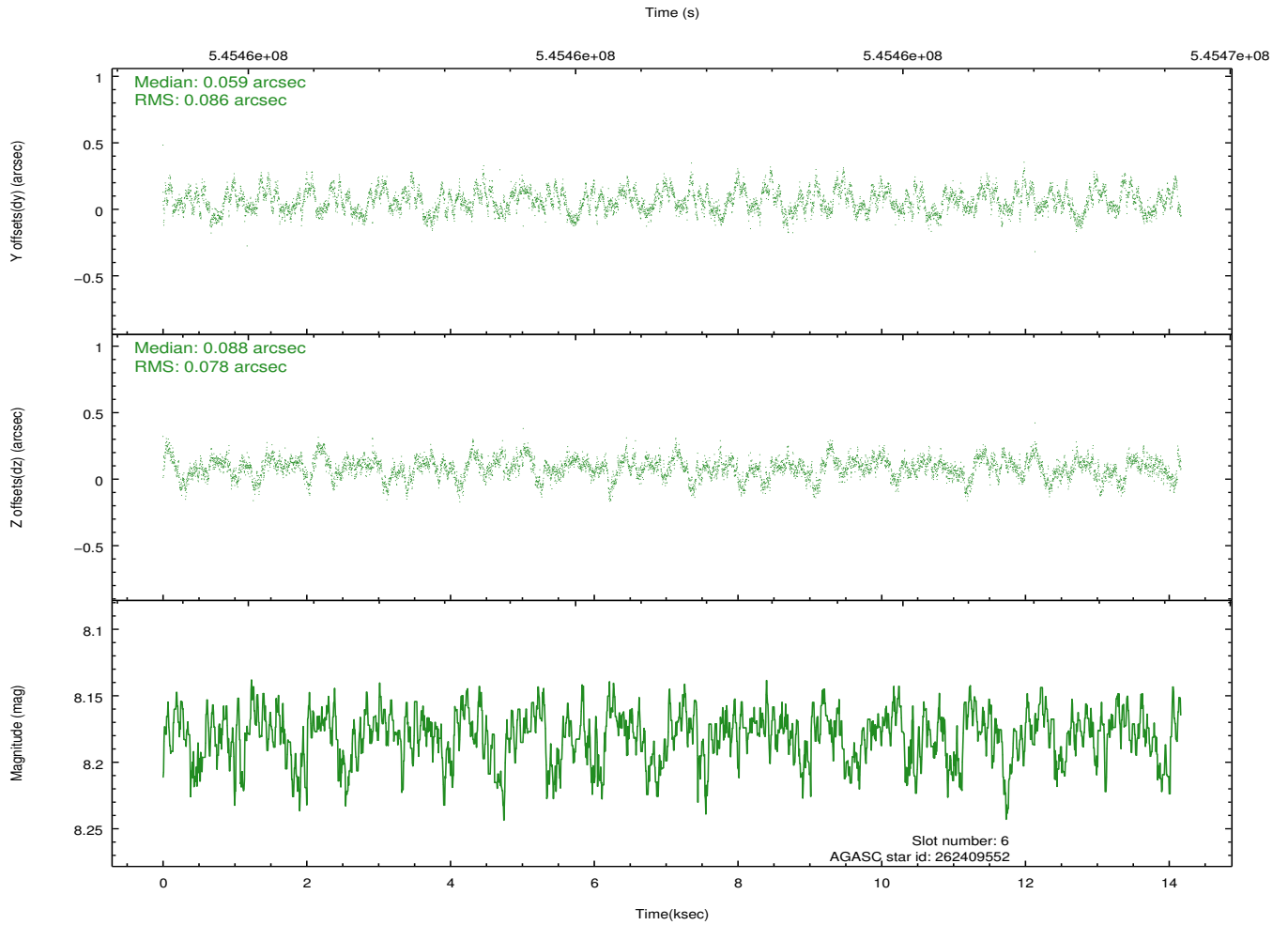
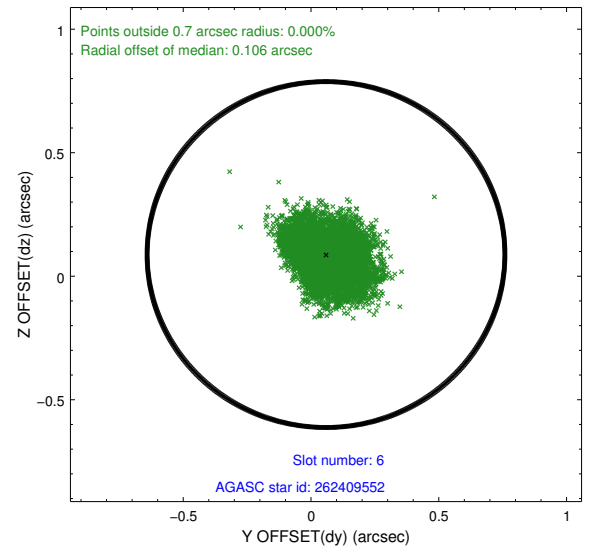
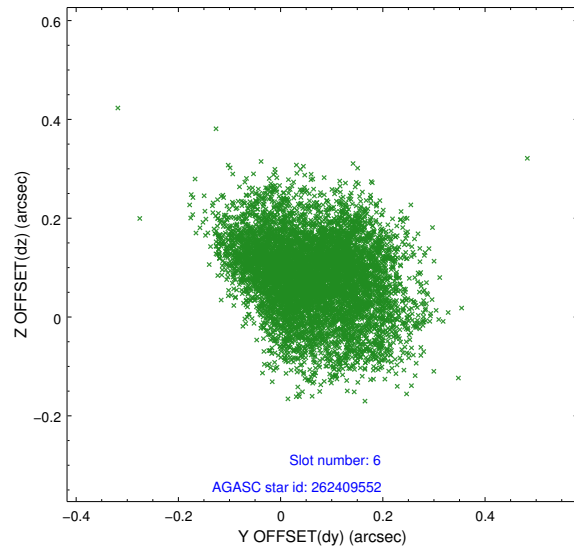
2.4.2 Slot 4



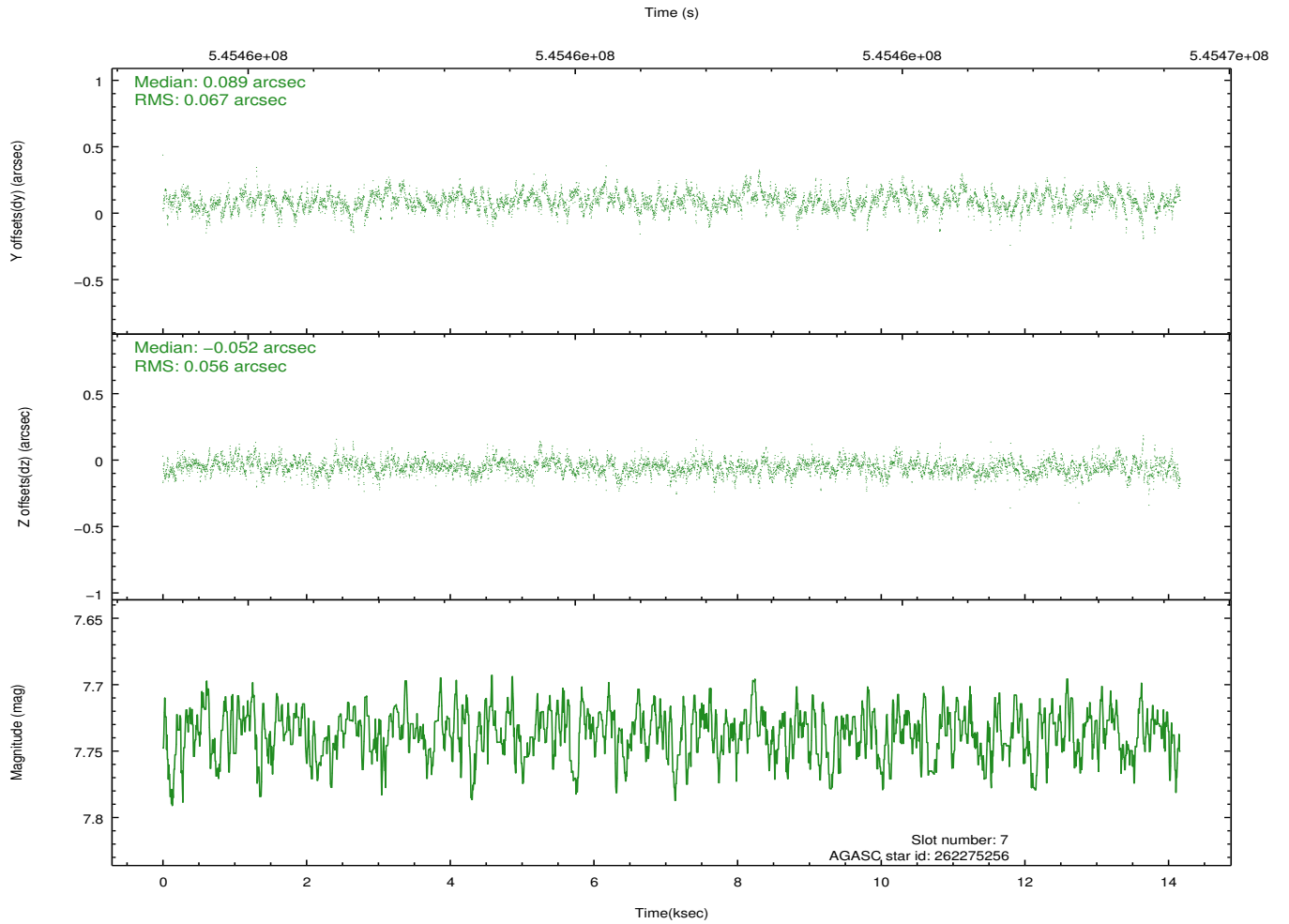
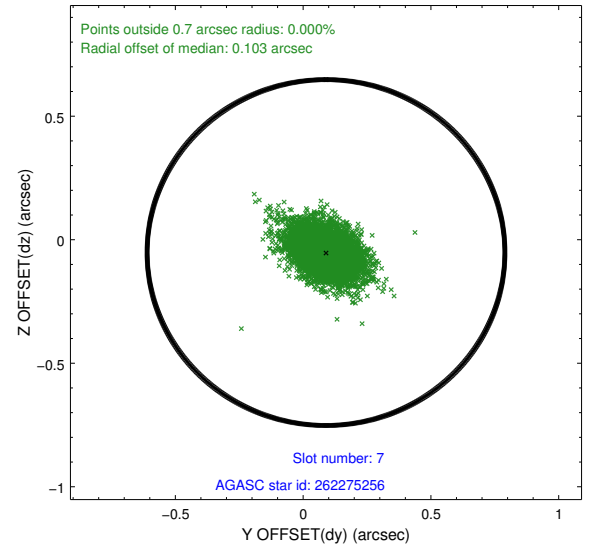
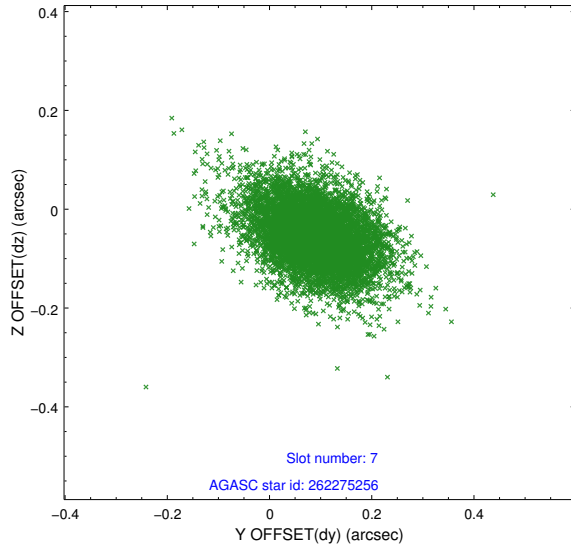
2.4.3 Slot 5



2.4.4 Slot 6

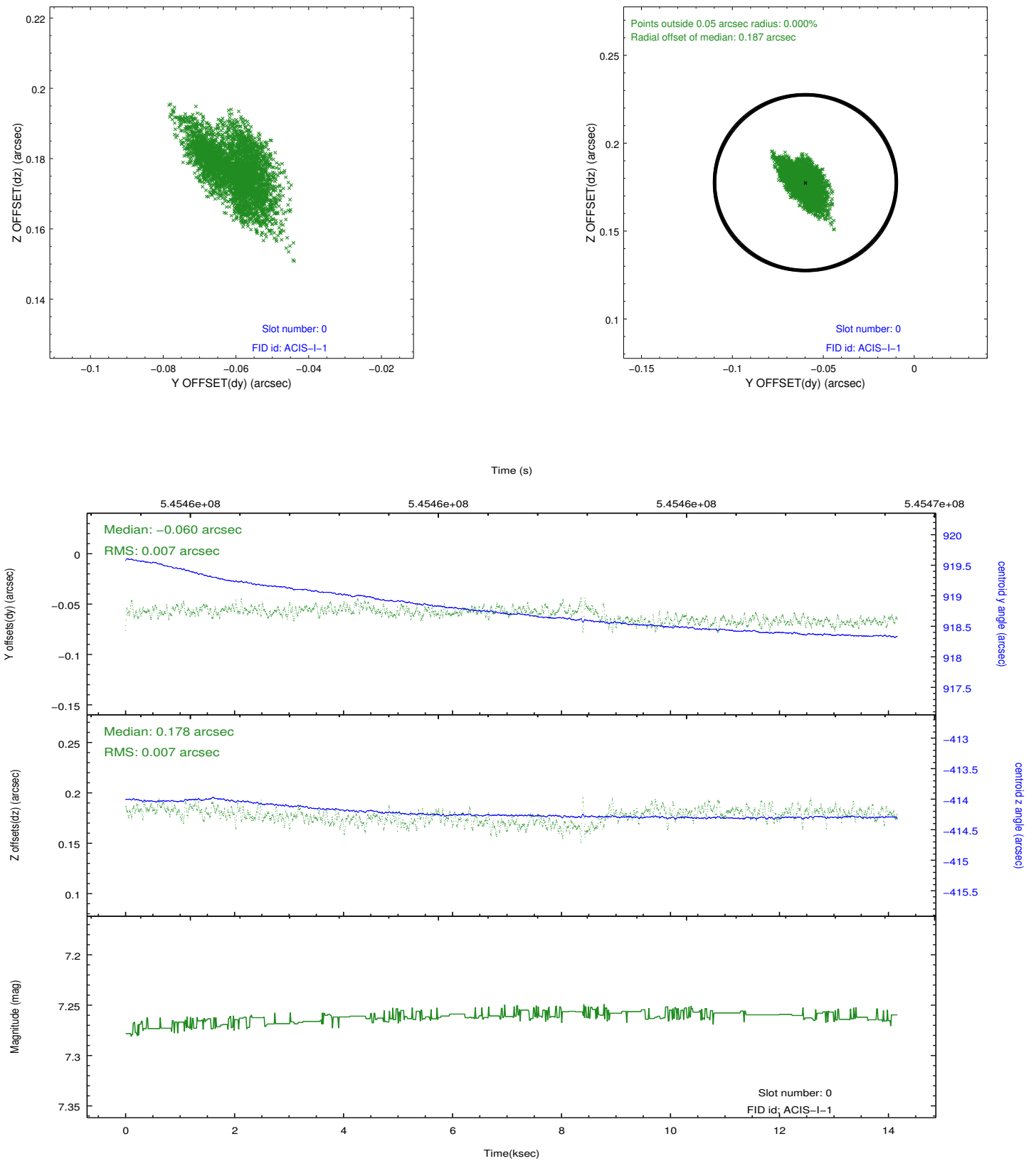


2.4.5 Slot 7

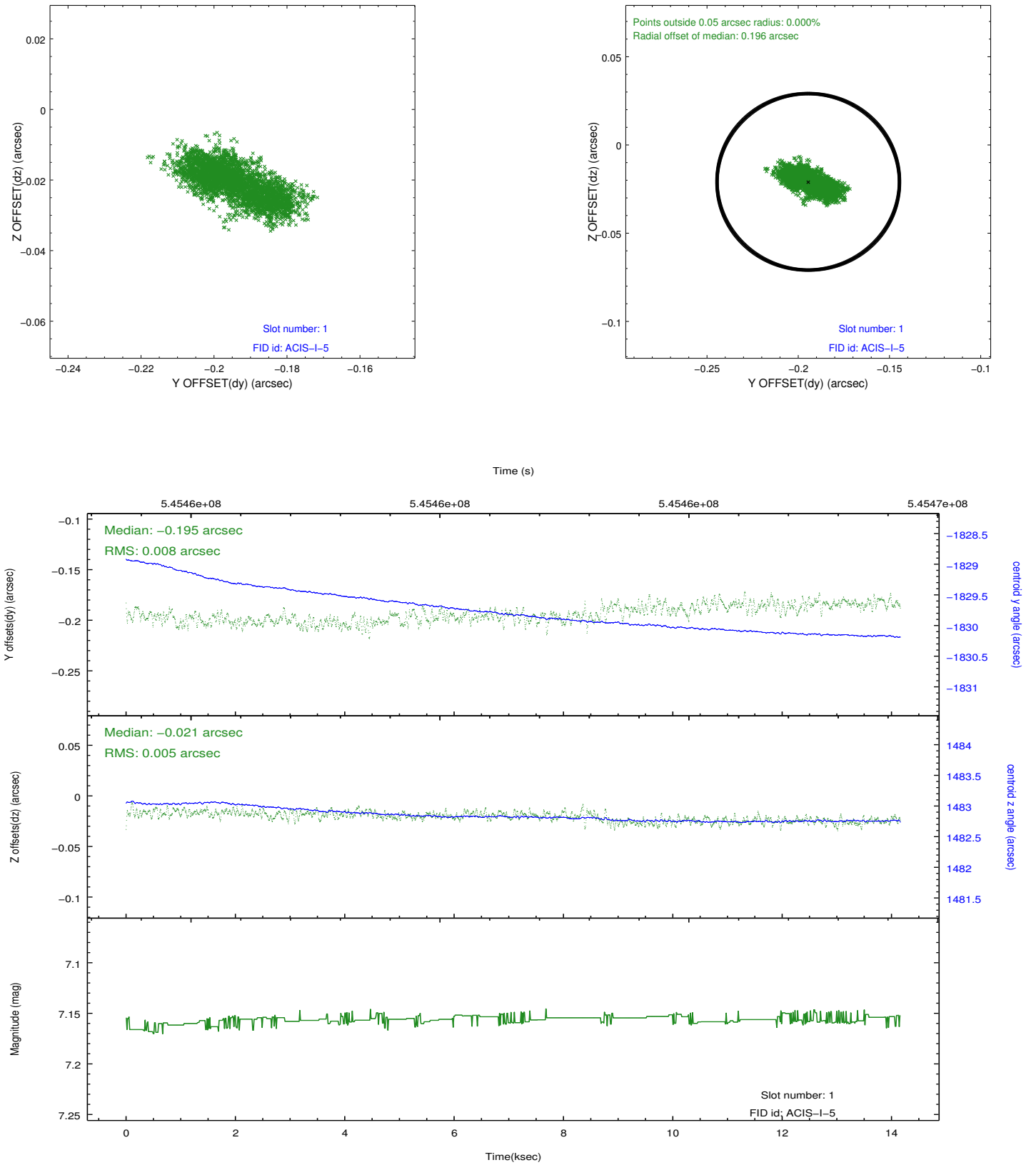


2.5 FID Slots

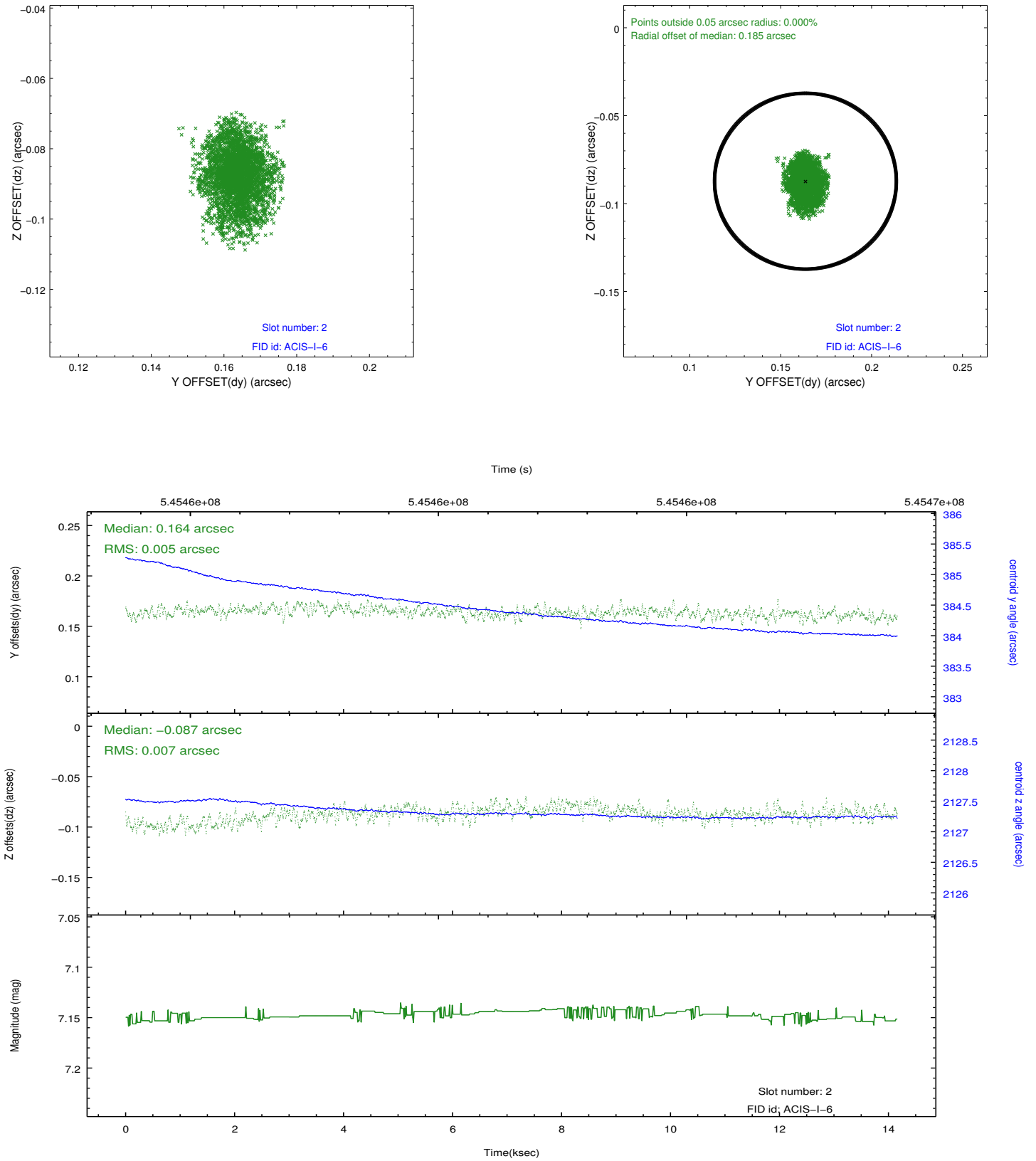
2.5.1 Slot 0



2.5.2 Slot 1



2.5.3 Slot 2



A Summary

A.1 Status

V&V Scientist	Beth Sundheim
V&V Date (YYYY-MM-DD)	2015.04.15
V&V Edition	1
V&V Disposition and Status	OK
V&V Charge Time	14.080200108409

A.2 Comments

Window preference met.