

V&V Reference Report

L2 ASCDS Version : 10.3.3

Observation 17400 - L2 Version 1
Chandra X-Ray Center

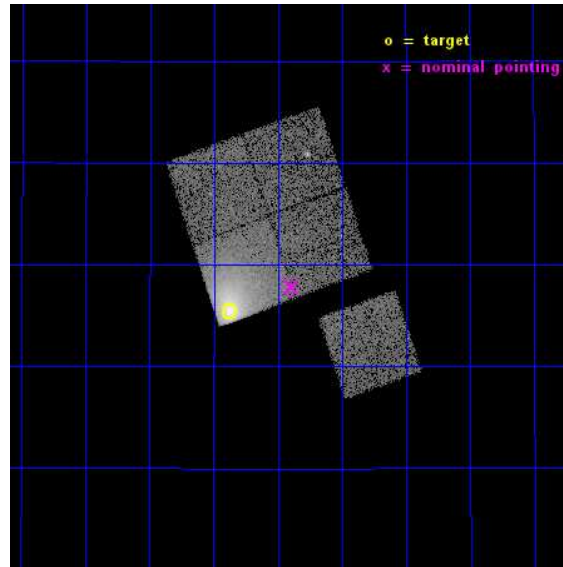
L2 Processing Date : Apr 8 2015

Contents

1	Front	2
2	OBI	3
2.1	OBI	3
2.1.1	Images	3
2.1.2	Bias	3
2.1.3	Parameters	4
2.1.4	Events	4
2.2	Compared Parameters	5
2.3	Aspect	6
2.4	Star Slots	9
2.4.1	Slot 3	9
2.4.2	Slot 4	10
2.4.3	Slot 5	11
2.4.4	Slot 6	12
2.4.5	Slot 7	13
2.5	FID Slots	14
2.5.1	Slot 0	14
2.5.2	Slot 1	15
2.5.3	Slot 2	16
A	Summary	17
A.1	Status	17
A.2	Comments	17

1 Front

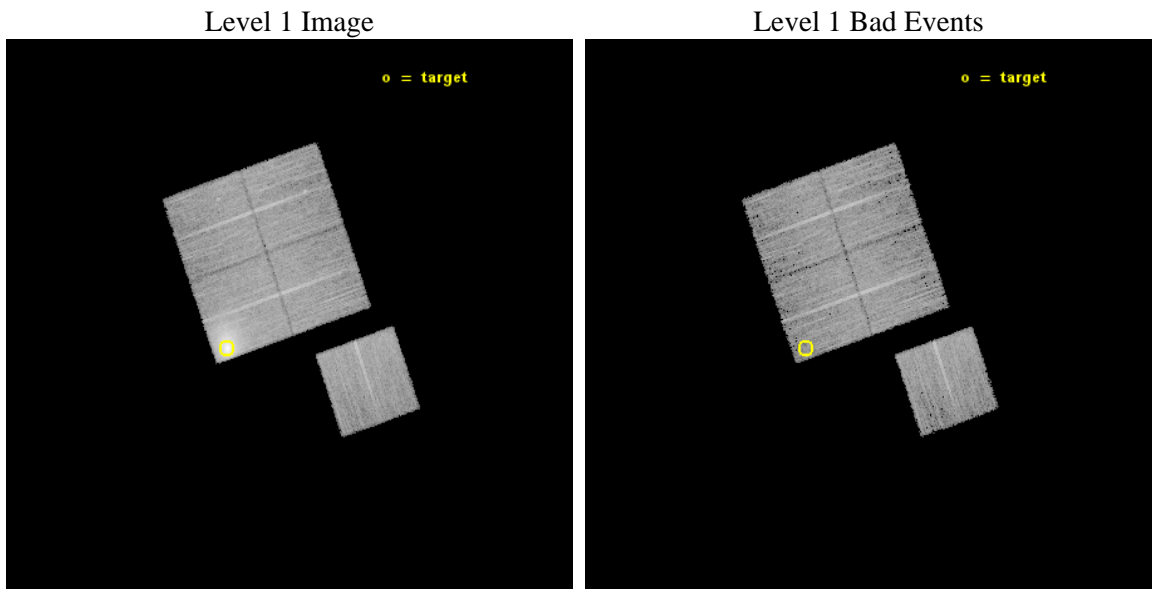
seq_num	890100	Sequence number
obs_id	17400	Observation id
title	AO-16 Calibration Observations of A1795	Proposal title
observer	Dr. CXC Calibration	Principal investigator
object	A1795	Source name
dtcycle	0	
cycle	P	events from which exps? Prim/Second/Both
ra_targ	207.219583	Observer's specified target RA [deg]
dec_targ	26.590833	Observer's specified target Dec [deg]
ra_nom	207.09846548462	Nominal RA [deg]
dec_nom	26.63088450815	Nominal Dec [deg]
roll_nom	160.76577127562	Nominal Roll [deg]
revision	1	Processing version of data
ontime	14768.359053493	Sum of GTIs [s]
liveltime	14575.399570151	Livetime [s]
ontime0	14771.500113726	Sum of GTIs [s]
ontime1	14771.500113726	Sum of GTIs [s]
ontime2	14771.500113726	Sum of GTIs [s]
ontime3	14768.359053493	Sum of GTIs [s]
ontime6	14771.500113726	Sum of GTIs [s]
l2events	96730	Number of level 2 events



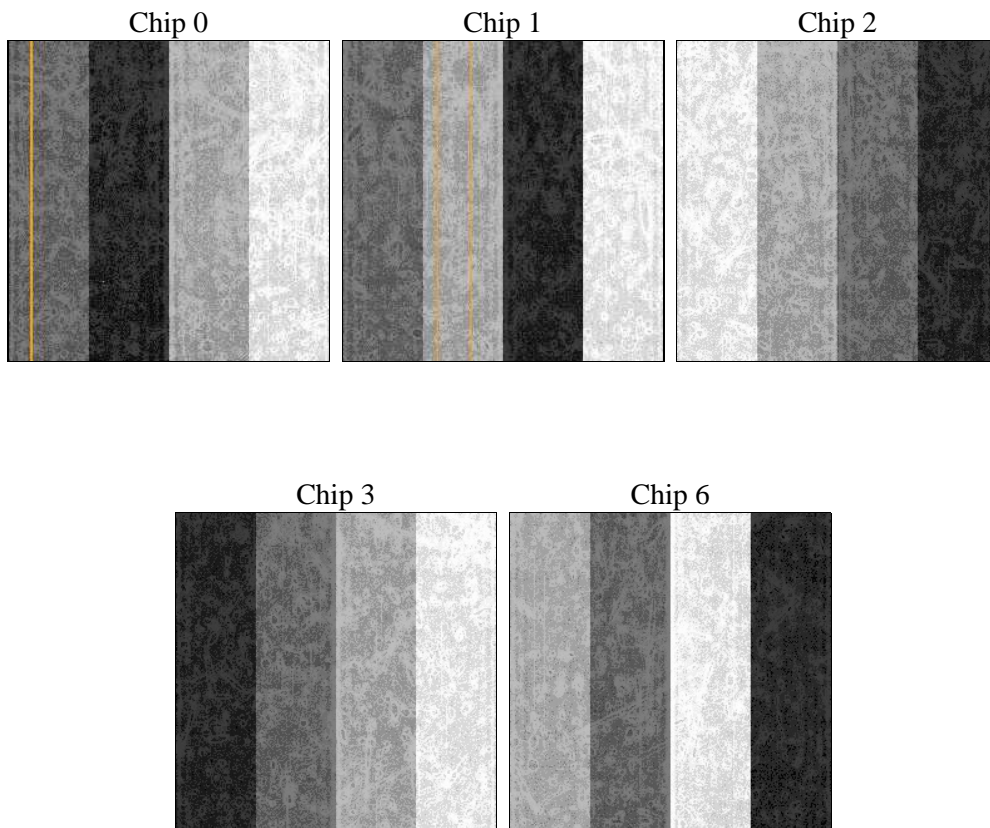
2 OBI

2.1 OBI

2.1.1 Images



2.1.2 Bias



2.1.3 Parameters

obi_num	0	Obi number	sched_exp_time	15000.000000	[s] Scheduled observation exposure time
ascdsver	10.3.3	Processing system revision	ontime	14768.359053493	Sum of GTIs [s]
caldbver	4.6.7	 	ontime0	14771.500113726	Sum of GTIs [s]
date	2015-04-08T11:21:54	Date and time of file creation	ontime1	14771.500113726	Sum of GTIs [s]
revision	1	Processing version of data	ontime2	14771.500113726	Sum of GTIs [s]
			ontime3	14768.359053493	Sum of GTIs [s]
			ontime6	14771.500113726	Sum of GTIs [s]
			l1events	407833	Number of level 1 events

2.1.4 Events

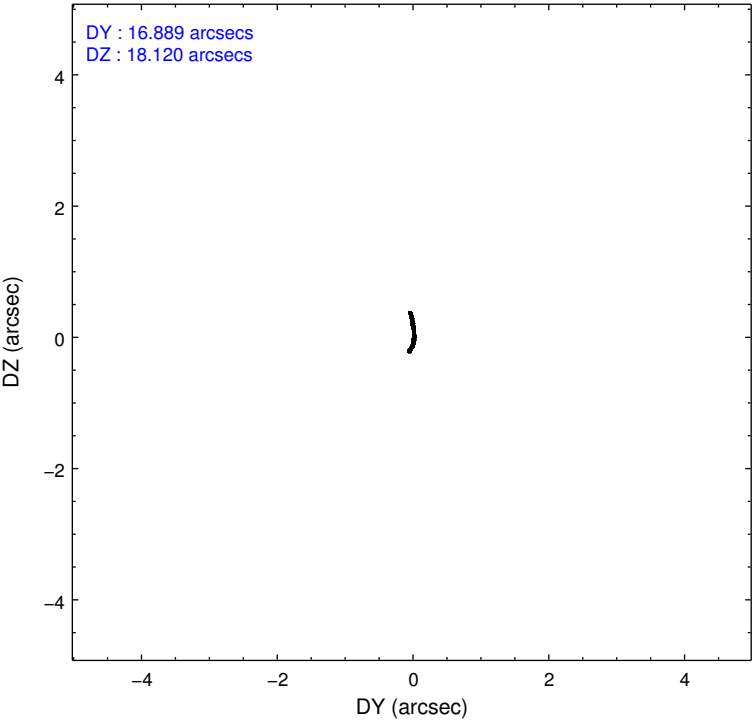
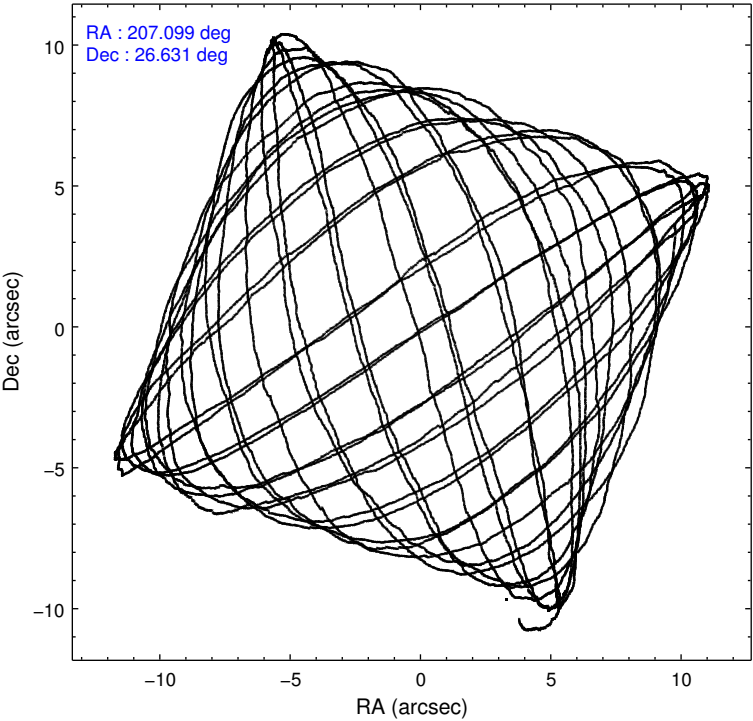
	ccd 0	ccd 1	ccd 2	ccd 3	ccd 6
level 1 events	67854	68434	72785	127289	71471
rejected events	59056	58065	63420	60214	62593
rejected %	87%	84%	87%	47%	87%

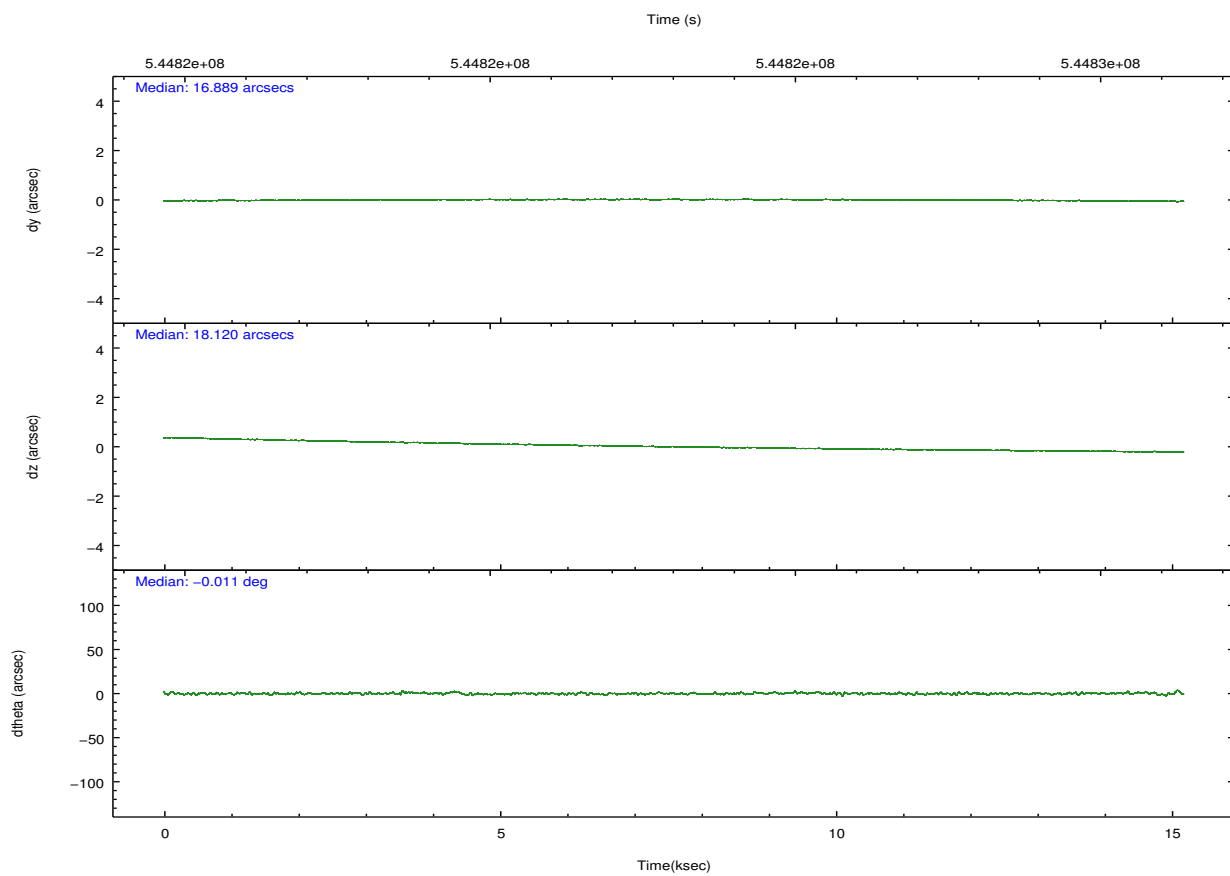
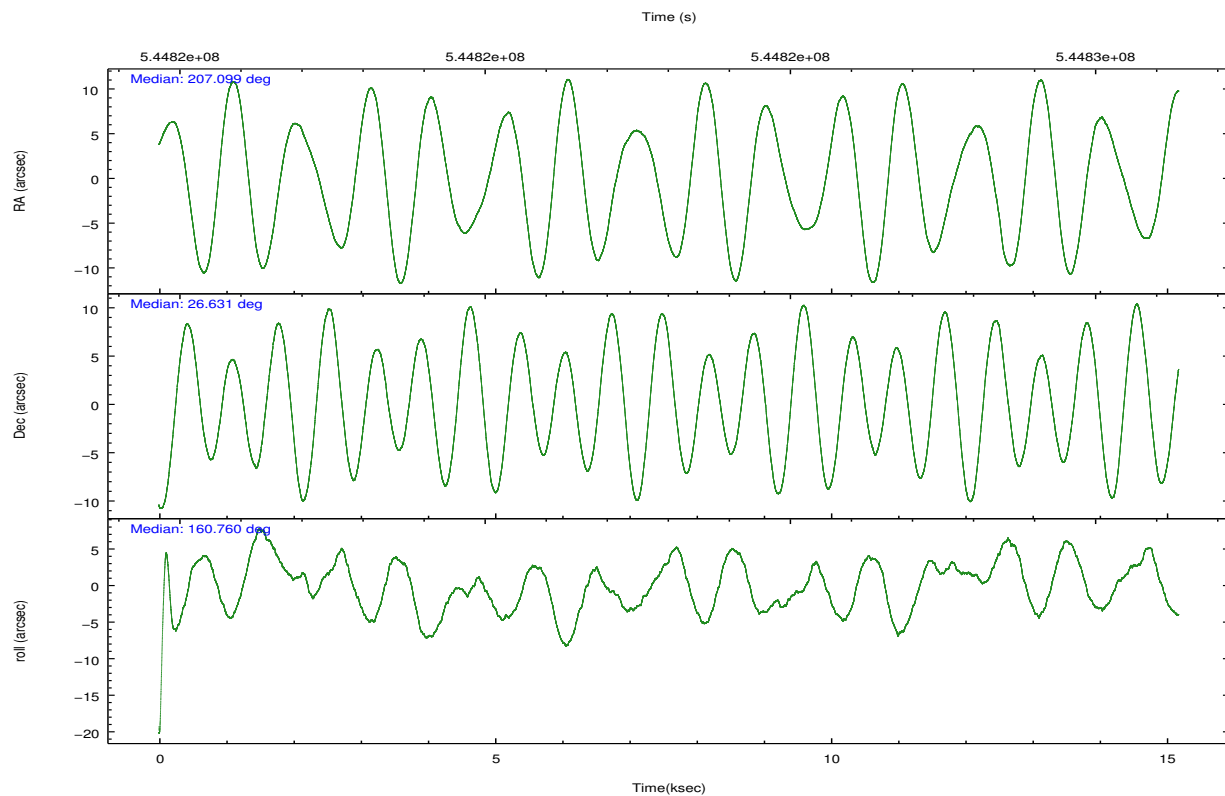
	ccd 0	ccd 1	ccd 2	ccd 3	ccd 6
grade 0 events	3295	4287	3937	49138	3233
	4%	6%	5%	38%	4%
grade 1 events	32	54	40	209	28
	0%	0%	0%	0%	0%
grade 2 events	2135	2258	2110	8346	1992
	3%	3%	2%	6%	2%
grade 3 events	864	847	865	2962	857
	1%	1%	1%	2%	1%
grade 4 events	777	923	817	3029	833
	1%	1%	1%	2%	1%
grade 5 events	3319	3475	3064	3947	3673
	4%	5%	4%	3%	5%
grade 6 events	1730	2061	1638	3635	1967
	2%	3%	2%	2%	2%
grade 7 events	55702	54529	60314	56023	58888
	82%	79%	82%	44%	82%

2.2 Compared Parameters

Parameter	Planned	Actual	Parameter	Planned	Actual
Instrument	ACIS	ACIS	Obspar format version number	7	7
Detector	ACIS-01236	ACIS-01236	Obspar file type	PREDICTED	ACTUAL
Grating	NONE	NONE	Obspar update status	NONE	UPDATED
Data mode	VFAINT	VFAINT	Number of optional ACIS chips dropped	0	0
Observation mode	POINTING	POINTING	On-chip summing requested	N	N
[deg] Pointing RA	207.128757	207.0984654846209	Subarray requested	NONE	NONE
[deg] Pointing Dec	26.636163	26.63088450815025	Alternating exposures requested	N	N
[deg] Pointing Roll	160.543503	160.7657712756178	[s] Primary exposure time	0.000000	3.1
[s] Window start time (MET)	544233667.184000	544233667.184000			
[s] Window stop time (MET)	546739267.184000	546739267.184000			
[mm] SIM focus pos	-0.782348	-0.7809083437167272			
[mm] SIM defocus	0	0.001439871863259334			
[mm] SIM translation stage pos	-214.092463	-214.0989765584371			
[mm] SIM translation stage offset	-19.5	-19.49347644449256			
[s] Observation start time (MET)	544815589.184000	544815213.50667			
Observation start date	2015-04-07T17:38:42	2015-04-07T17:33:33			
[s] Observation end time (MET)	544830589.184000	544830723.29502			
Observation end date	2015-04-07T21:48:42	2015-04-07T21:52:03			
Read mode	TIMED	TIMED			

2.3 Aspect



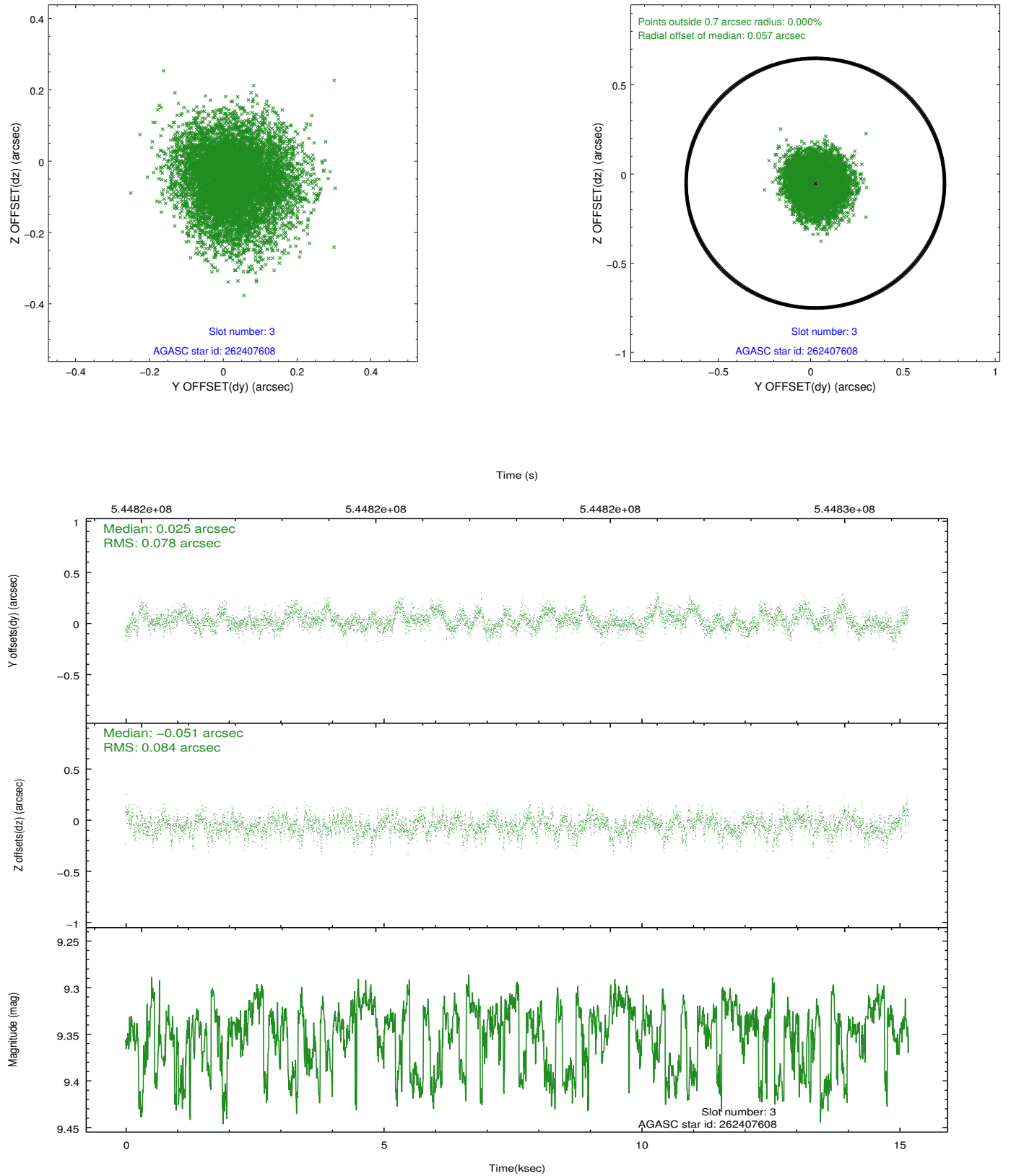


Slot Statistics

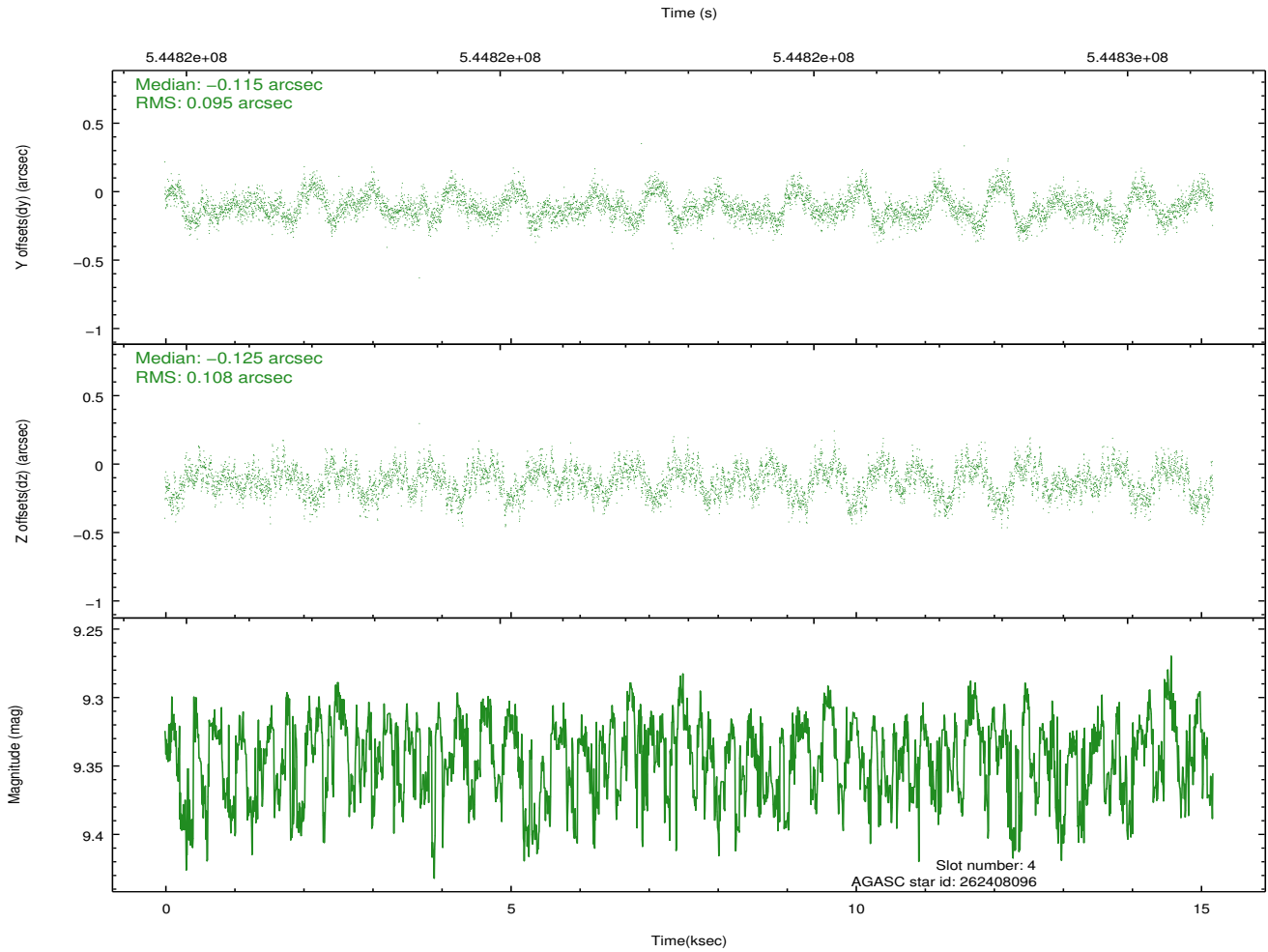
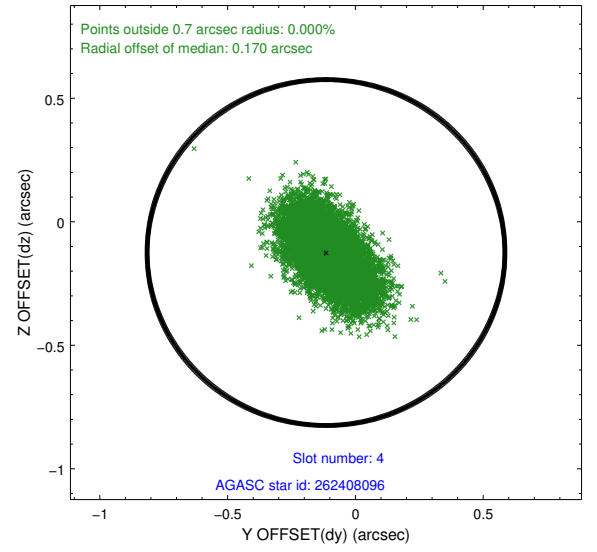
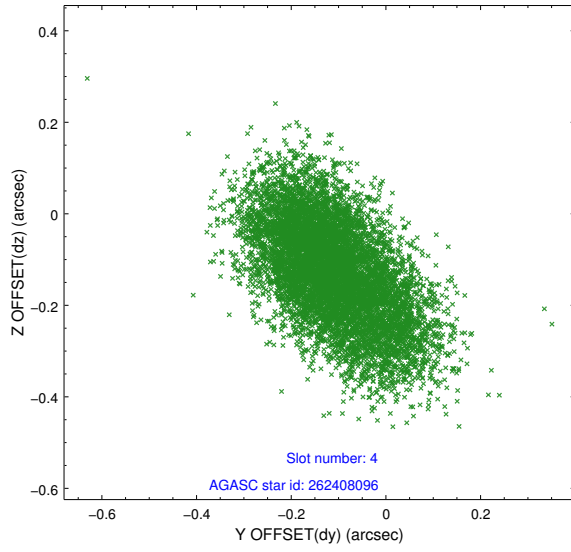
slot	status	used	id	mag	n_pts	med_dy	med_dz	dr1	dr2	ra	dec	mean_y	mean_z
0	FID		ACIS-I-1	7.15	3702	0.220	-0.438	0.008	0.015	0.000000	0.000000	922.58	-1242.45
1	FID		ACIS-I-2	7.10	3703	-0.384	0.146	0.006	0.010	0.000000	0.000000	-772.97	-1246.77
2	FID		ACIS-I-4	7.10	3702	0.067	0.359	0.006	0.011	0.000000	0.000000	2140.85	660.14
3	GUIDE	used	262407608	9.35	7400	0.025	-0.051	0.124	0.198	207.378401	26.435507	-999.00	412.44
4	GUIDE	used	262408096	9.34	7401	-0.115	-0.125	0.152	0.254	207.011678	26.515421	211.53	535.50
5	GUIDE	used	262408512	7.99	7404	0.063	0.302	0.086	0.136	207.800210	27.128796	-1435.17	-2393.70
6	GUIDE	used	262409552	8.18	7406	-0.009	0.028	0.113	0.178	206.584269	27.192805	2313.09	-1311.80
7	GUIDE	used	262411960	9.67	7400	0.025	-0.148	0.170	0.274	207.327895	25.881727	-1512.26	2345.37

2.4 Star Slots

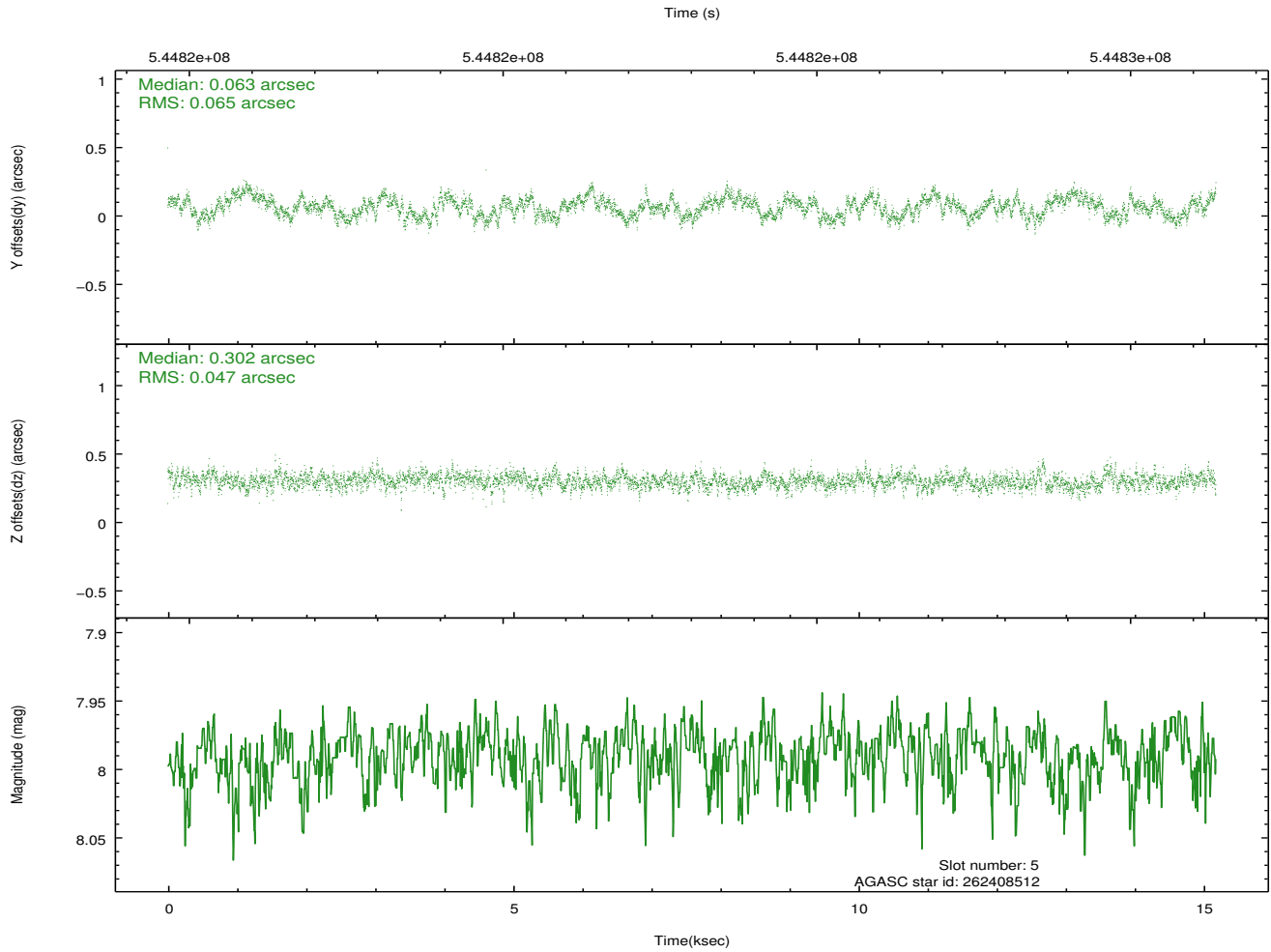
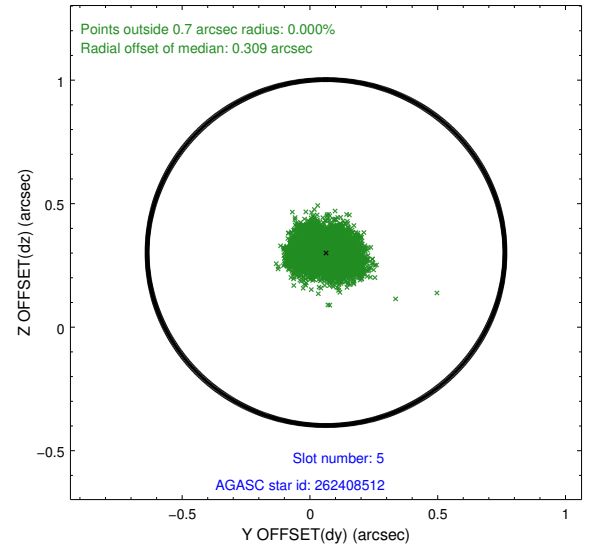
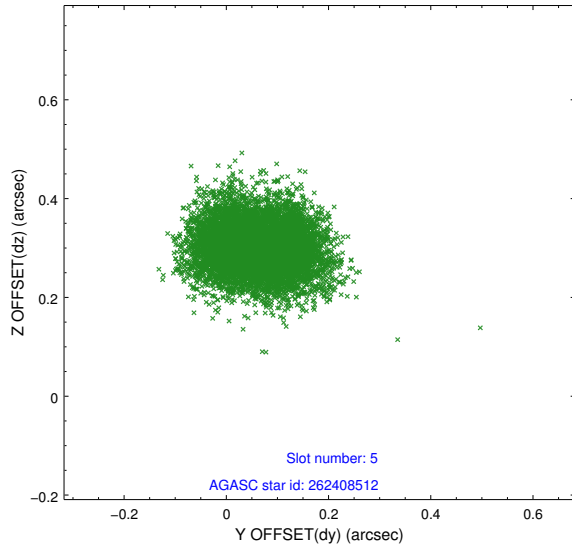
2.4.1 Slot 3



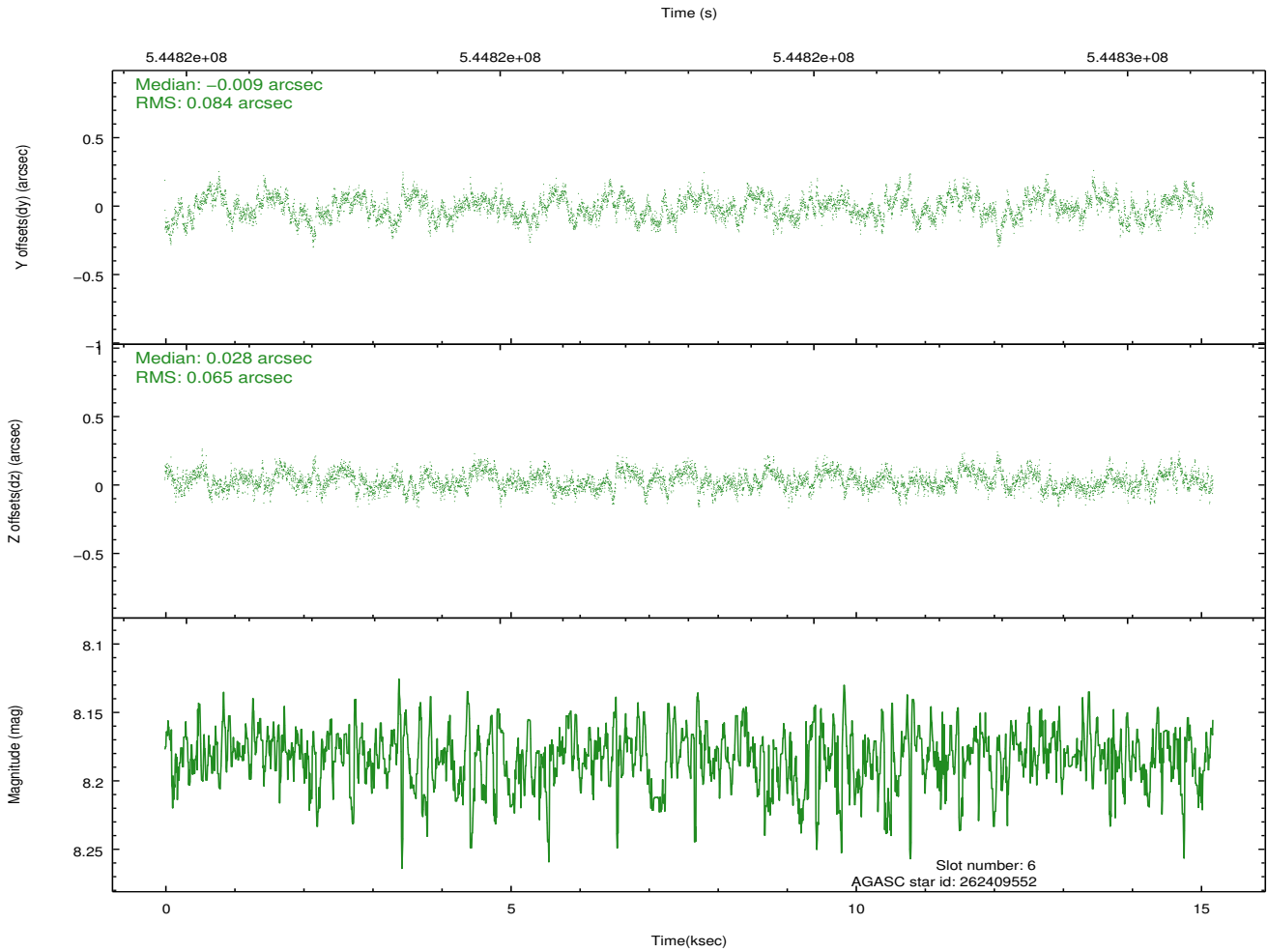
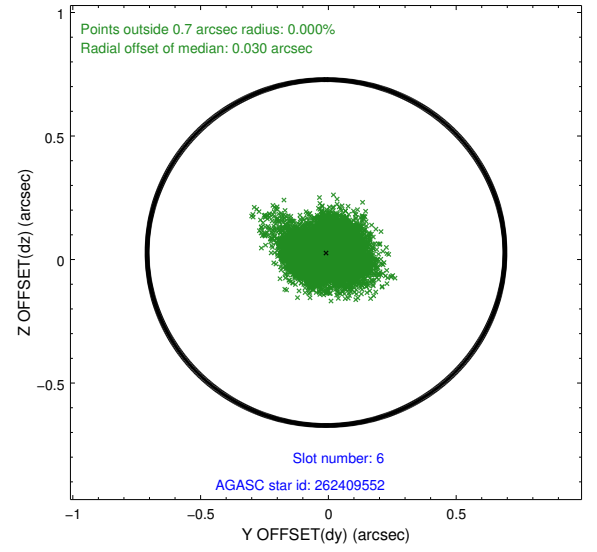
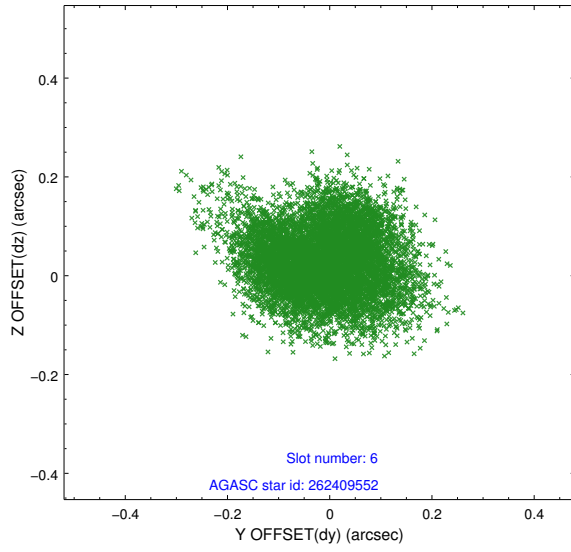
2.4.2 Slot 4



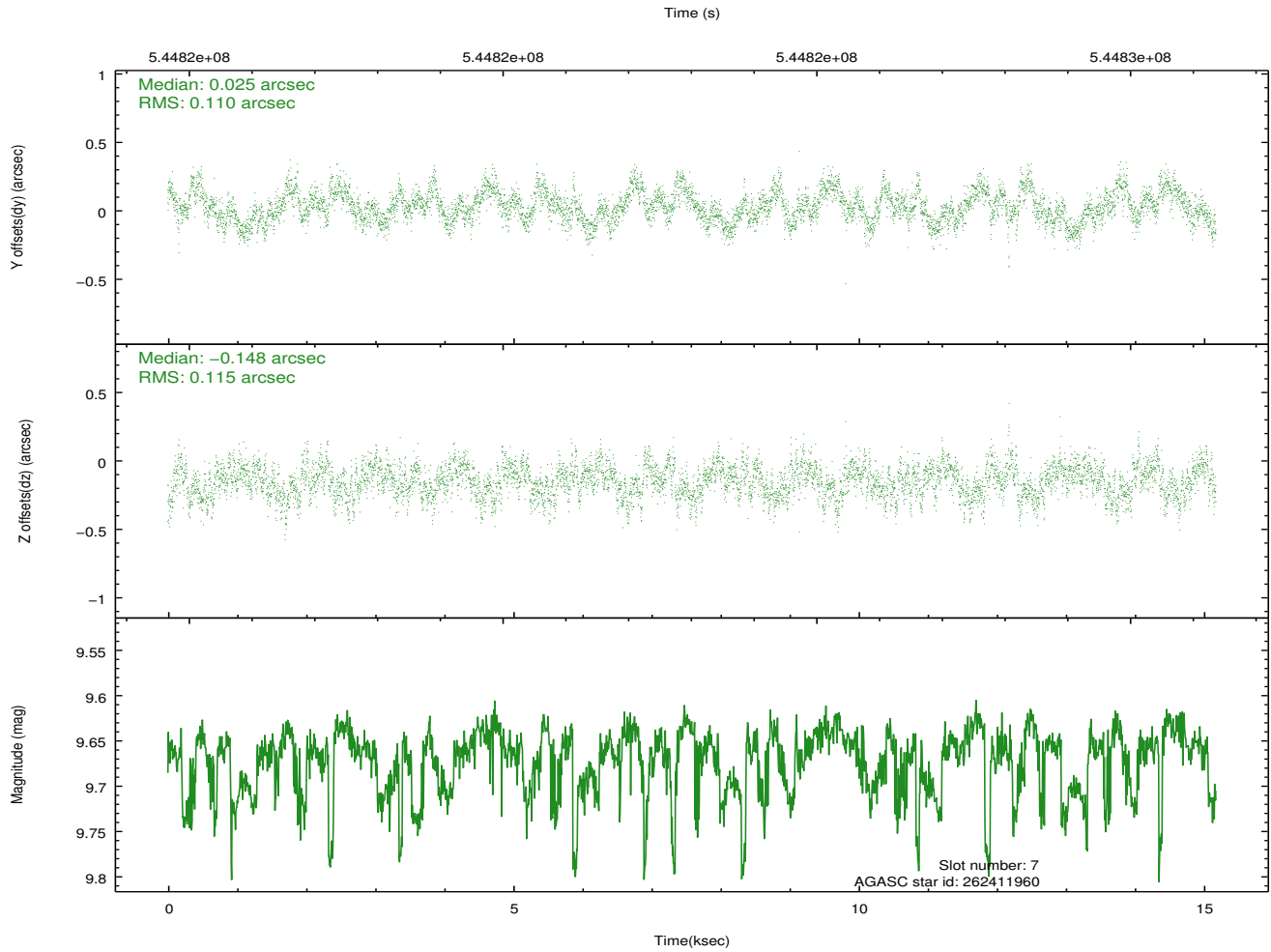
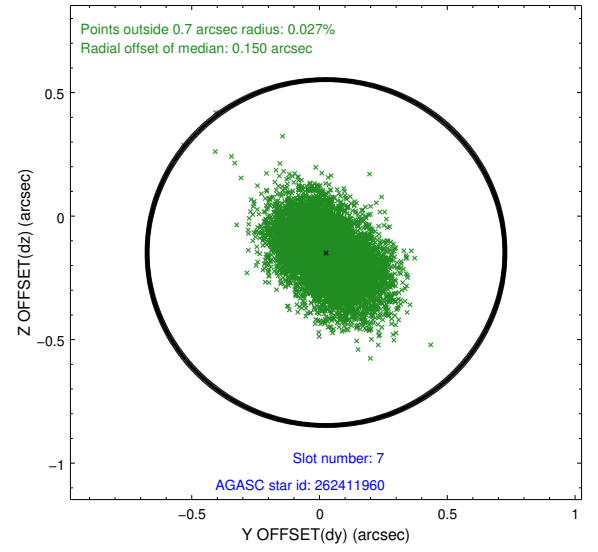
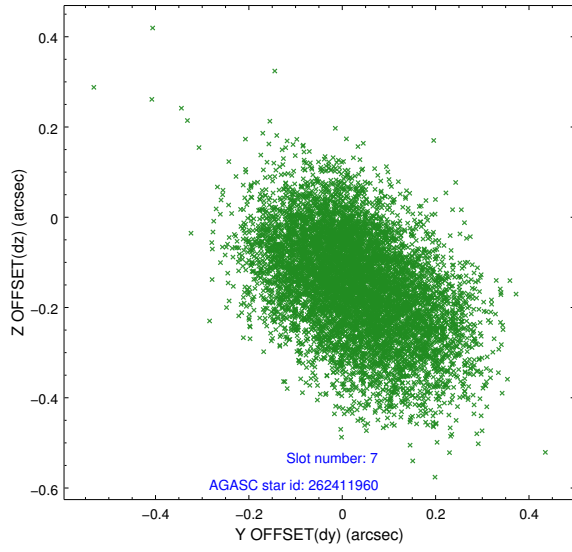
2.4.3 Slot 5



2.4.4 Slot 6

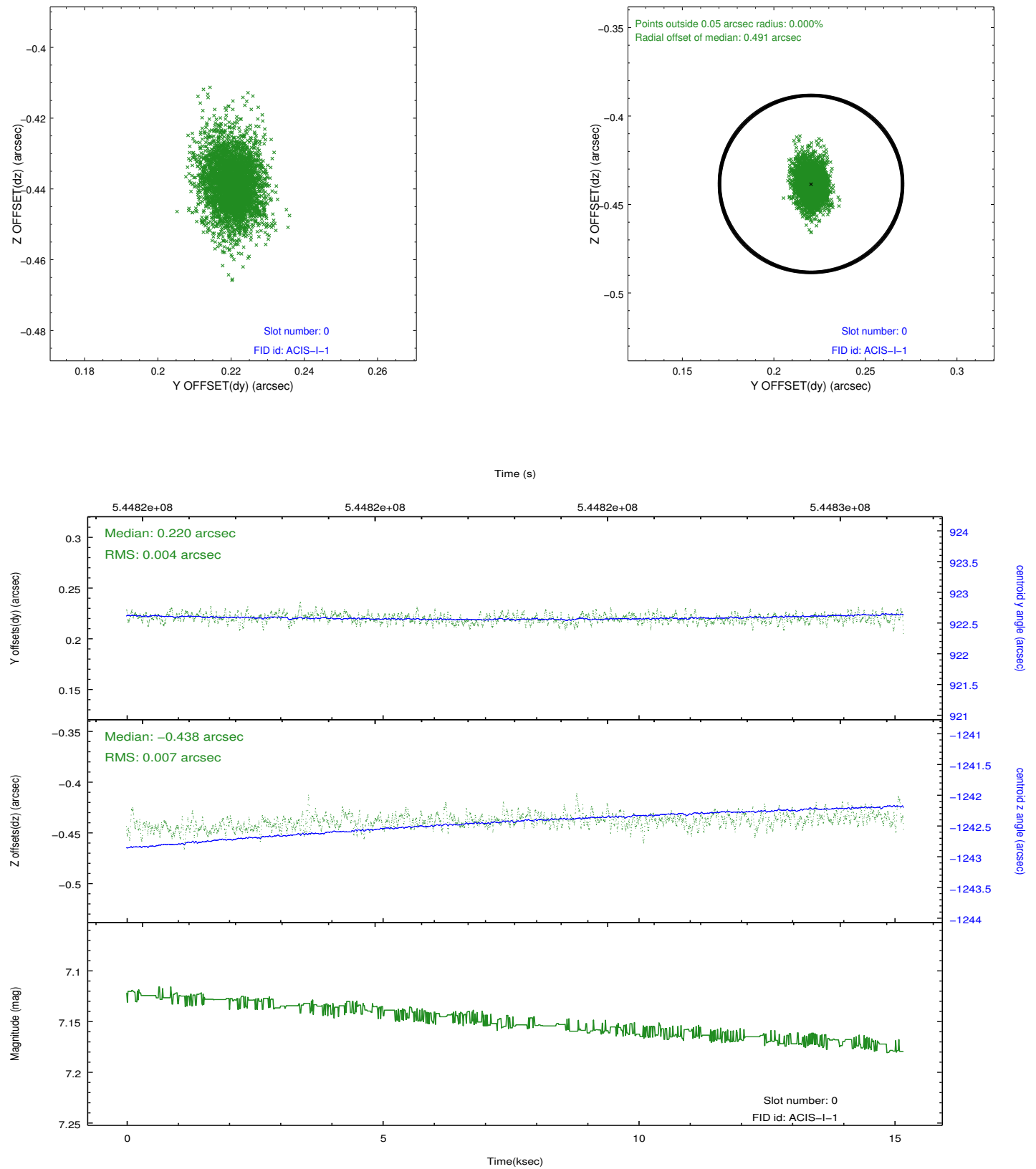


2.4.5 Slot 7

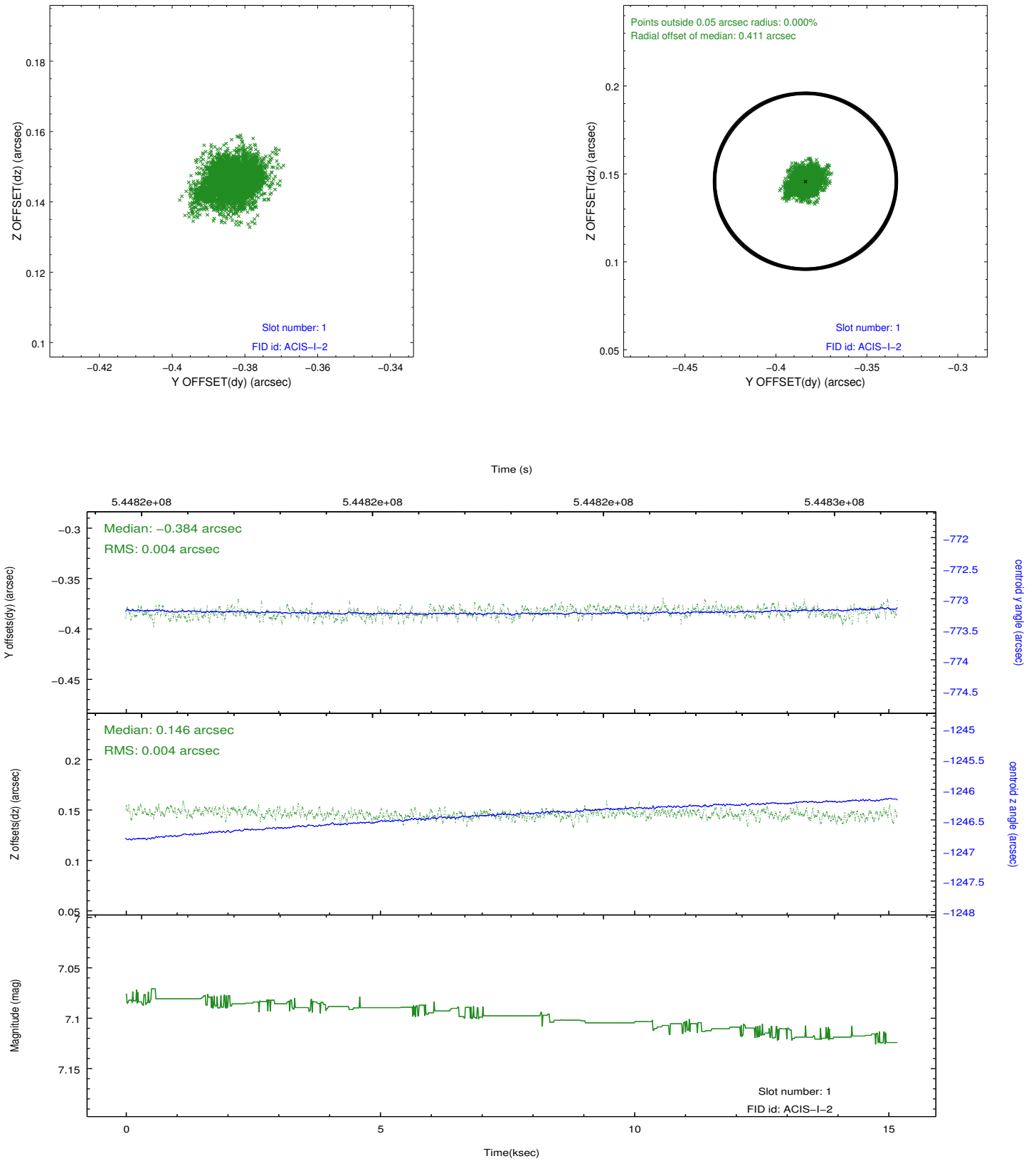


2.5 FID Slots

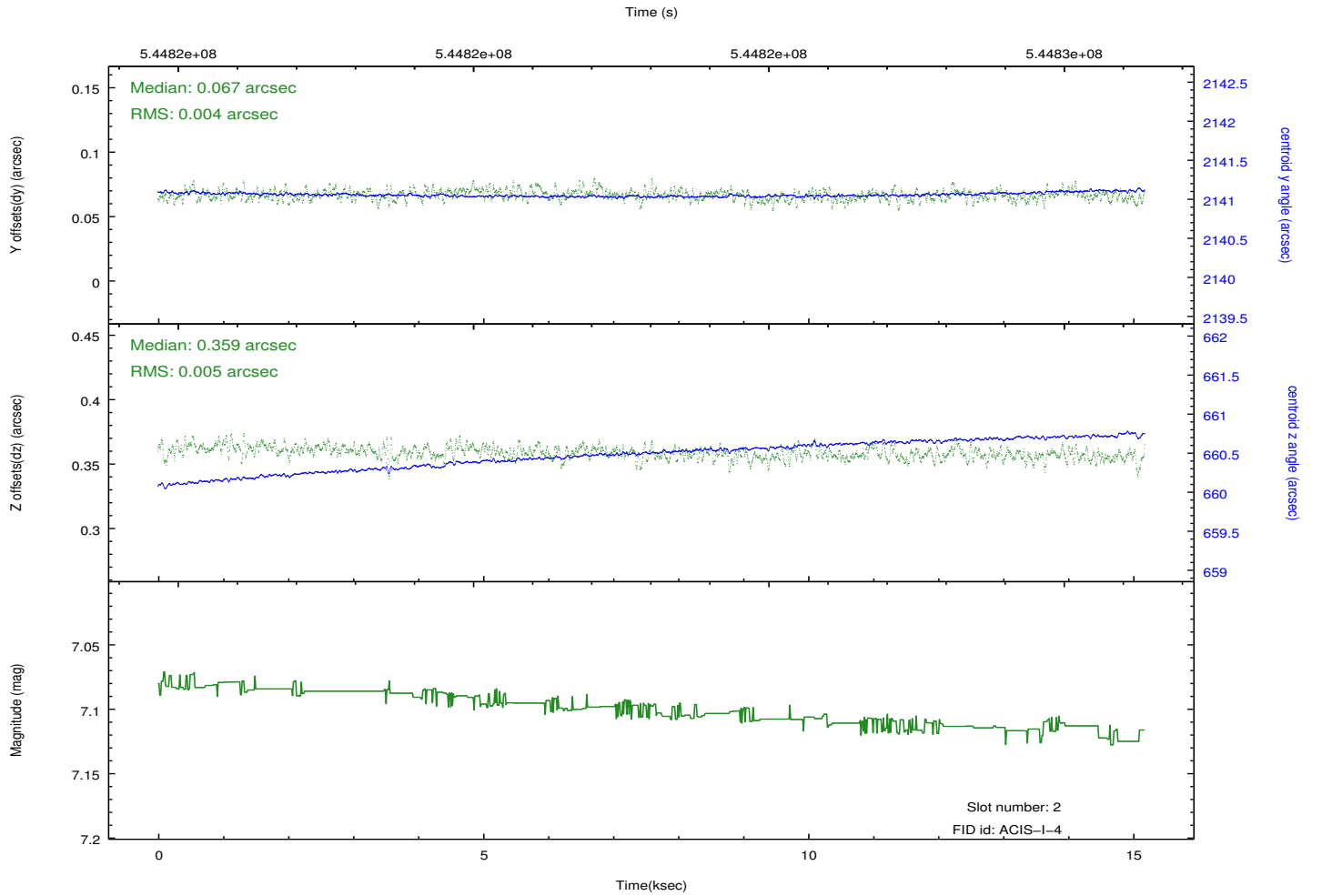
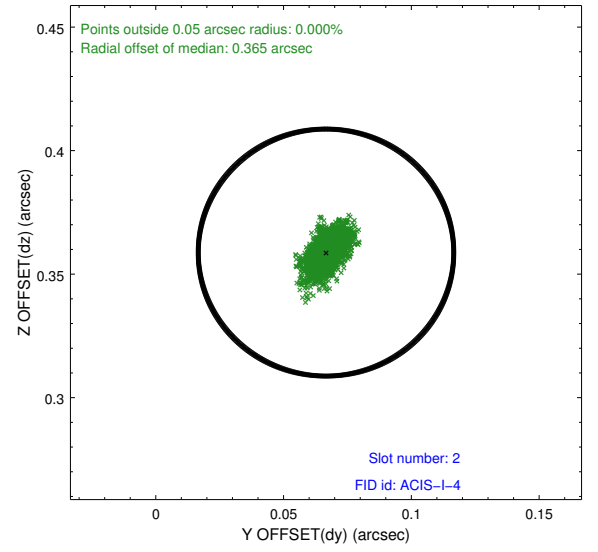
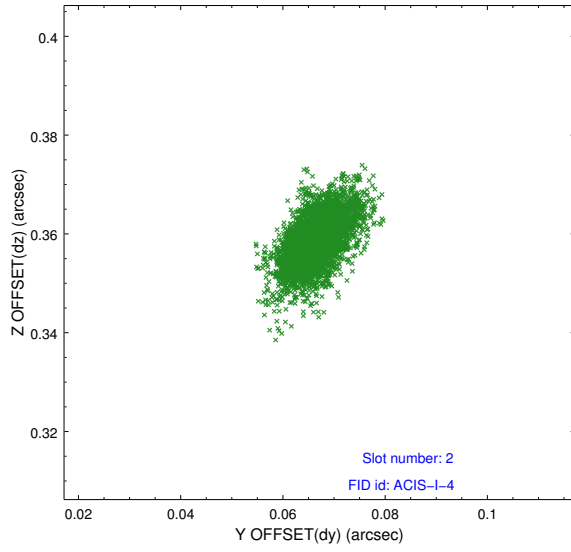
2.5.1 Slot 0



2.5.2 Slot 1



2.5.3 Slot 2



A Summary

A.1 Status

V&V Scientist	Jen Lauer
V&V Date (YYYY-MM-DD)	2015.04.08
V&V Edition	1
V&V Disposition and Status	OK
V&V Charge Time	14.768359053493

A.2 Comments

Window constraint met.