

V&V Reference Report

L2 ASCDS Version : 10.4

Observation 17389 - L2 Version 1
Chandra X-Ray Center

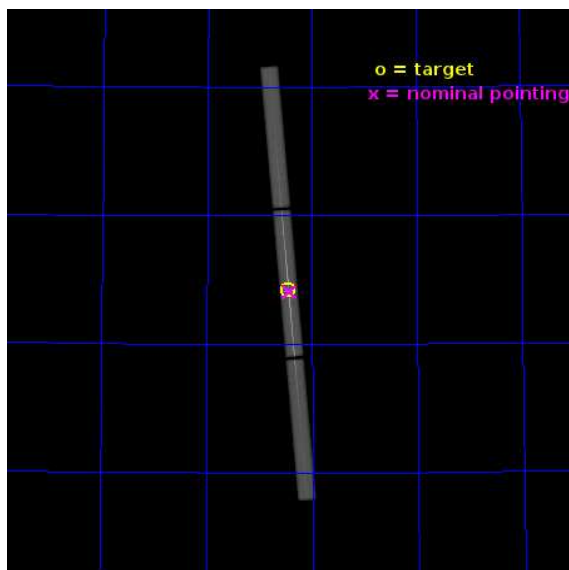
L2 Processing Date : Jul 2 2015

Contents

1	Front	2
2	OBI	3
2.1	OBI	3
2.1.1	Images	3
2.1.2	Parameters	4
2.1.3	Events	4
2.2	Compared Parameters	5
2.3	Aspect	6
2.4	Star Slots	9
2.4.1	Slot 3	9
2.4.2	Slot 4	10
2.4.3	Slot 5	11
2.4.4	Slot 6	12
2.4.5	Slot 7	13
2.5	FID Slots	14
2.5.1	Slot 0	14
2.5.2	Slot 1	15
2.5.3	Slot 2	16
3	Gratings	17
3.1	LETG Arm	17
A	Summary	19
A.1	Status	19
A.2	Comments	19

1 Front

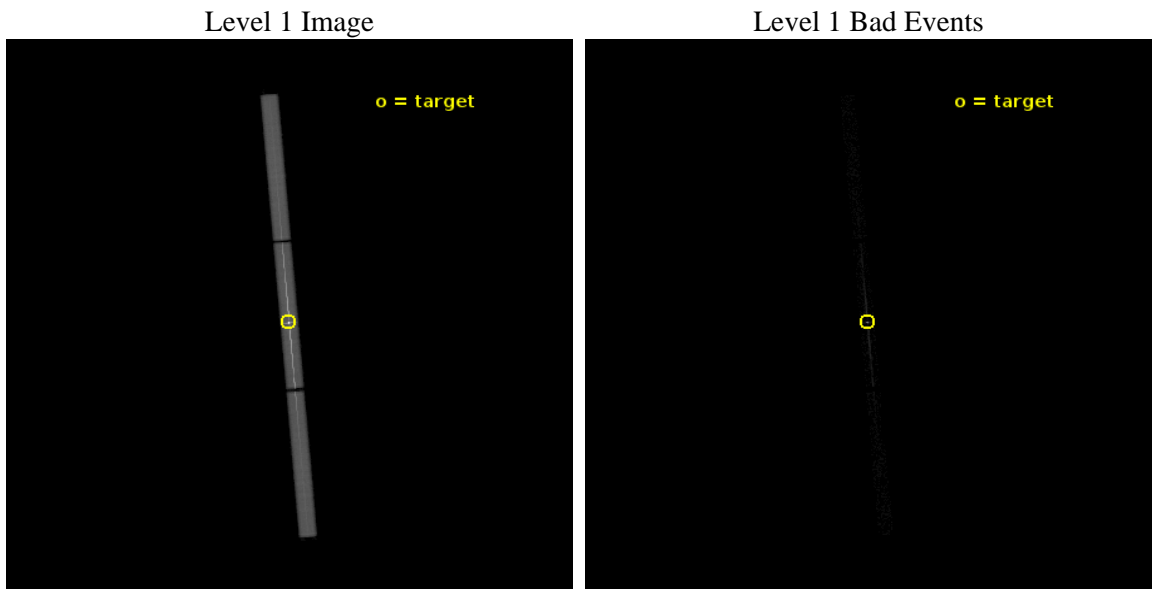
seq_num	790280	Sequence number
obs_id	17389	Observation id
title	AO-16 Calibration Observations of Mkn421	Proposal title
observer	Dr. CXC Calibration	Principal investigator
object	MKN421	Source name
ra_targ	166.113333	Observer's specified target RA [deg]
dec_targ	38.208806	Observer's specified target Dec [deg]
ra_nom	166.11291348055	Nominal RA [deg]
dec_nom	38.204065567713	Nominal Dec [deg]
roll_nom	265.09454281483	Nominal Roll [deg]
revision	1	Processing version of data
ontime	10189.781823397	[s]
livedtime	10088.767172914	Ontime multiplied by DTCOR
l2events	1044742	Number of level 2 events



2 OBI

2.1 OBI

2.1.1 Images



2.1.2 Parameters

obi_num	0	Obi number	sched_exp_time	10000.000000	[s] Scheduled observation exposure time
ascdsver	10.4	Processing system revision	ontime	10189.781823397	[s]
caldsver	4.6.7	 	l1events	1246306	Number of level 1 events
date	2015-07-02T17:10:32	Date and time of file creation	tgmethod	TGDETECT	Method used to create src1a file
revision	1	Processing version of data	zo_pos	(32747.32, 32898.77)	src1a sky pixel position

2.1.3 Events

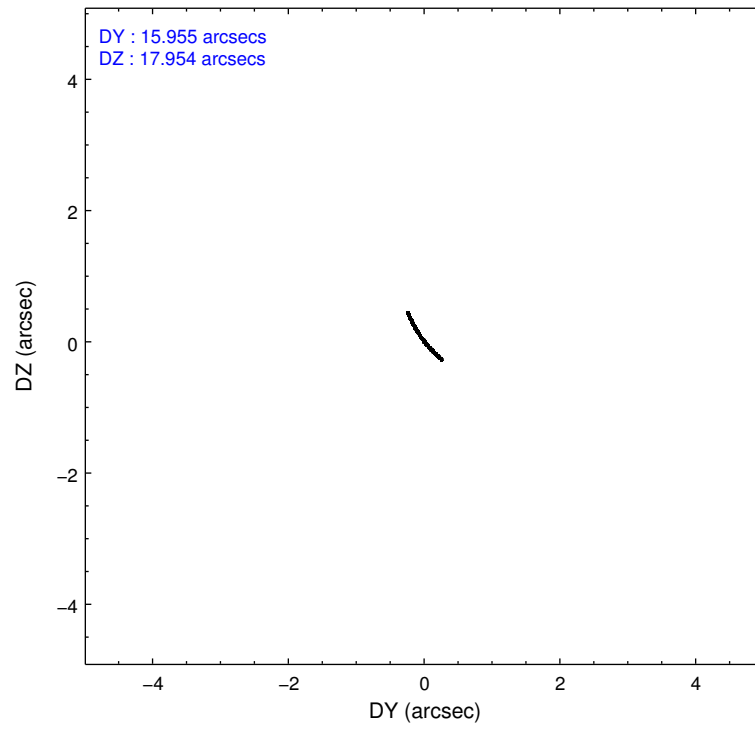
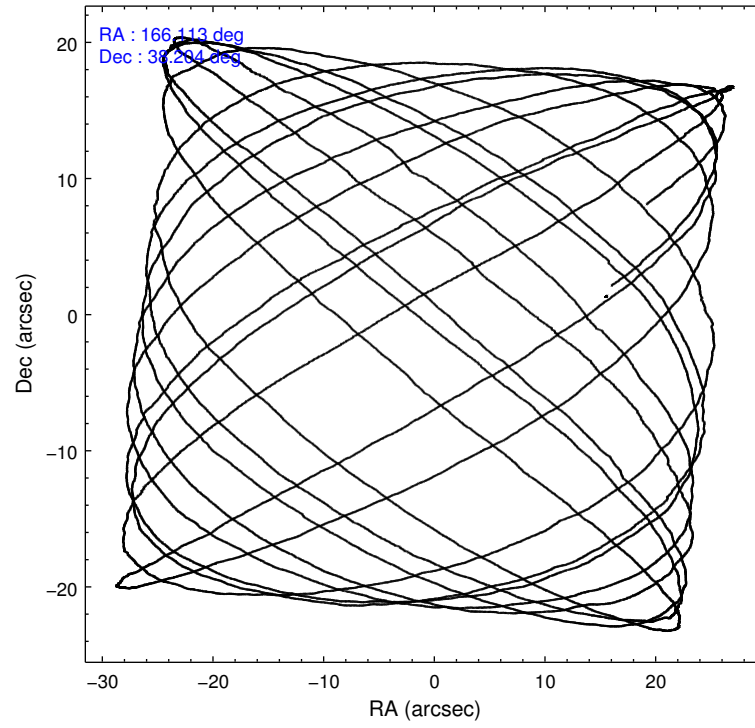
Level 1 Events

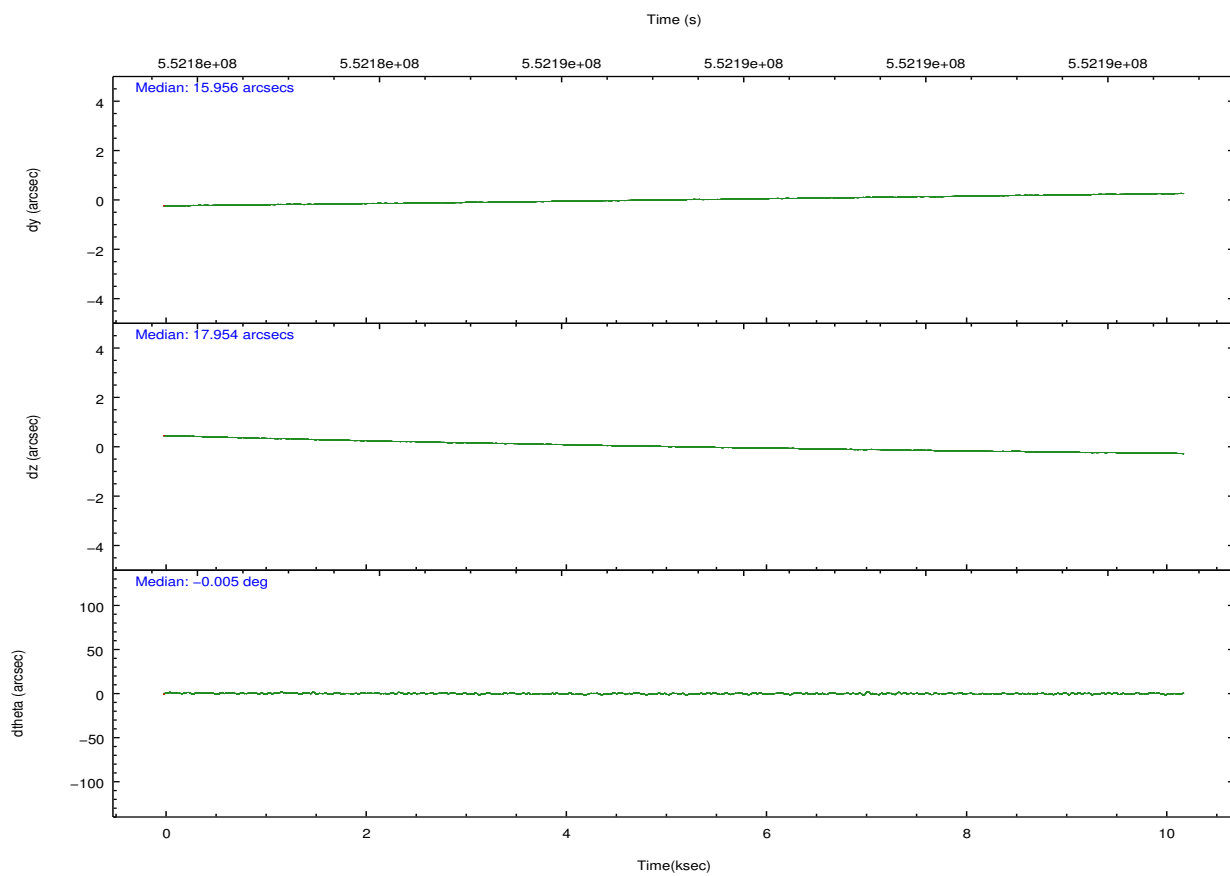
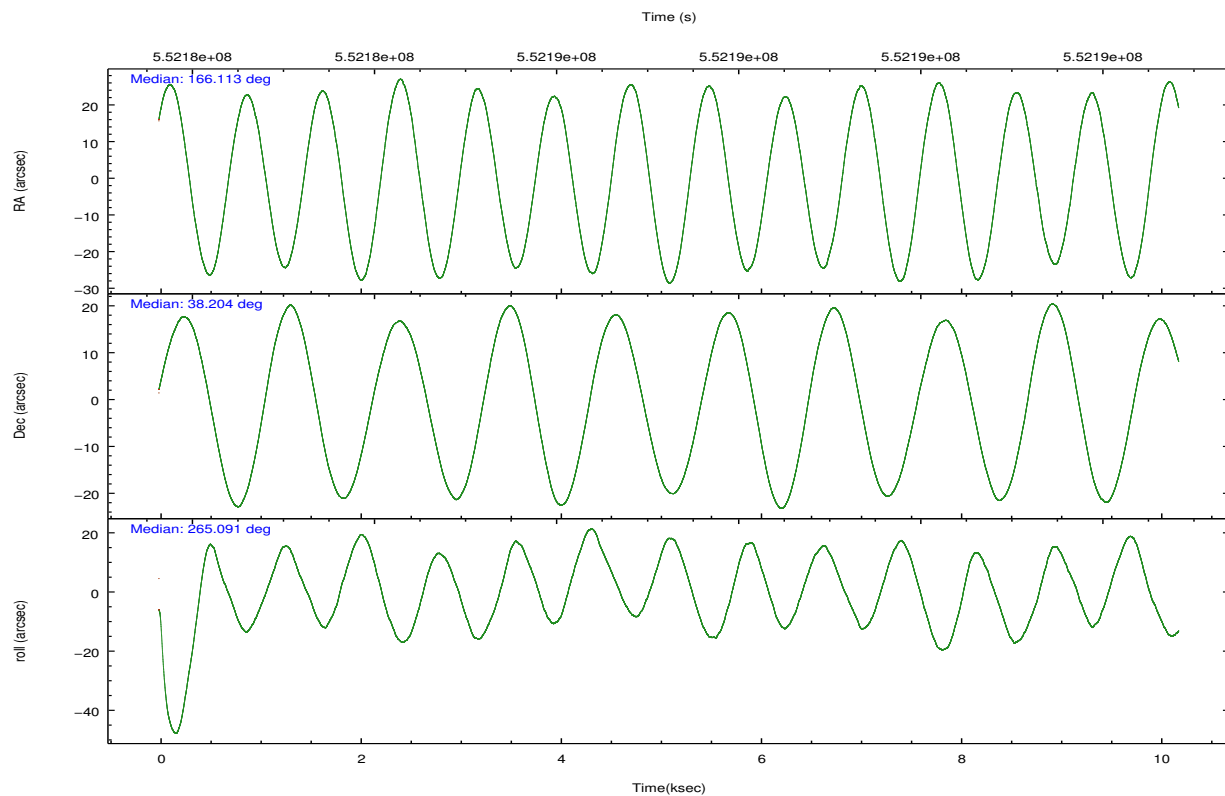
	segment 1	segment 2	segment 3
level 1 events	324176	604896	317234
rejected events	8507	16663	8373
rejected %	2%	2%	2%

2.2 Compared Parameters

Parameter	Planned	Actual	Parameter	Planned	Actual
Instrument	HRC	HRC	Obspar format version number	7	7
Detector	HRC-S	HRC-S	Obspar file type	PREDICTED	ACTUAL
Grating	LETG	LETG	Obspar update status	NONE	UPDATED
Data mode	OBSERVING	OBSERVING			
Observation mode	POINTING	POINTING			
[deg] Pointing RA	166.095601	166.1129134805467			
[deg] Pointing Dec	38.229419	38.20406556771343			
[deg] Pointing Roll	265.037875	265.0945428148324			
[mm] SIM focus pos	-1.429586	-1.428180813131781			
[mm] SIM defocus	0.1037507710433287	0.1051558262725154			
[mm] SIM translation stage pos	250.455976	250.466033080201			
[mm] SIM translation stage offset	0	-0.01005468664627074			
[s] Observation start time (MET)	552182314.184000	552181937.09499			
Observation start date	2015-07-01T23:57:26	2015-07-01T23:52:17			
[s] Observation end time (MET)	552192314.184000	552192446.93308			
Observation end date	2015-07-02T02:44:06	2015-07-02T02:47:26			

2.3 Aspect



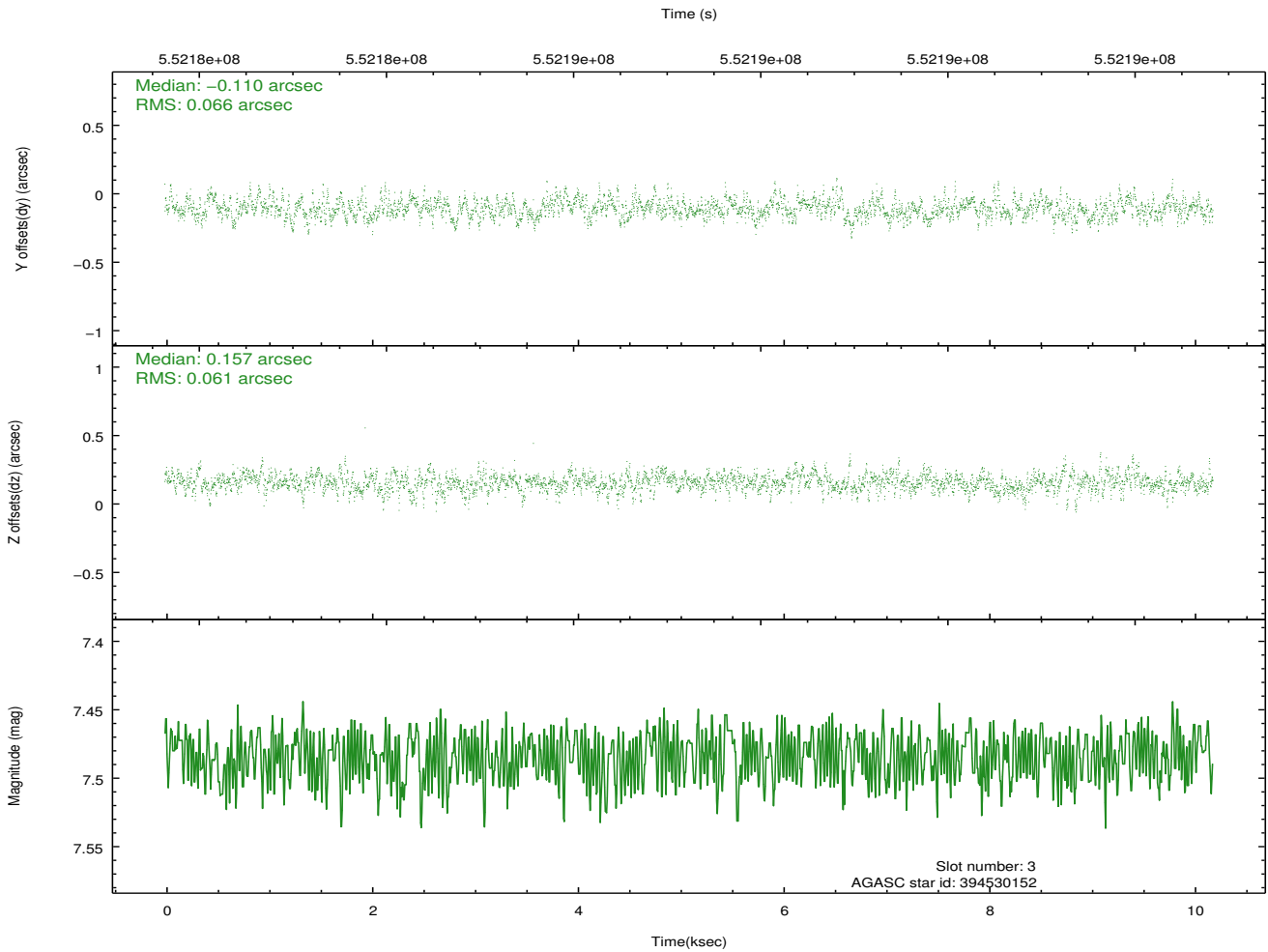
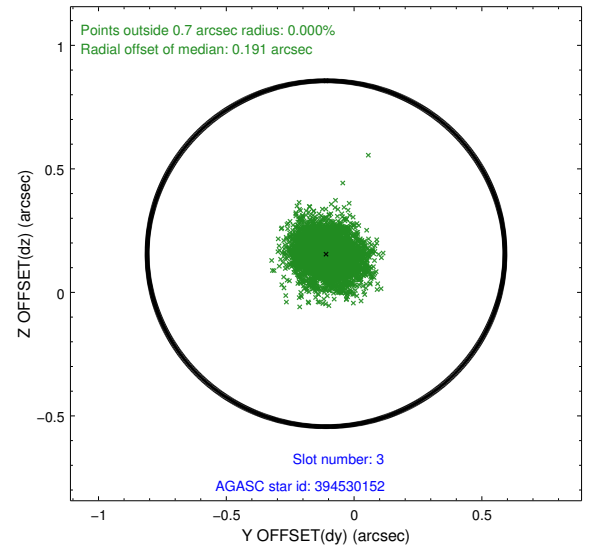
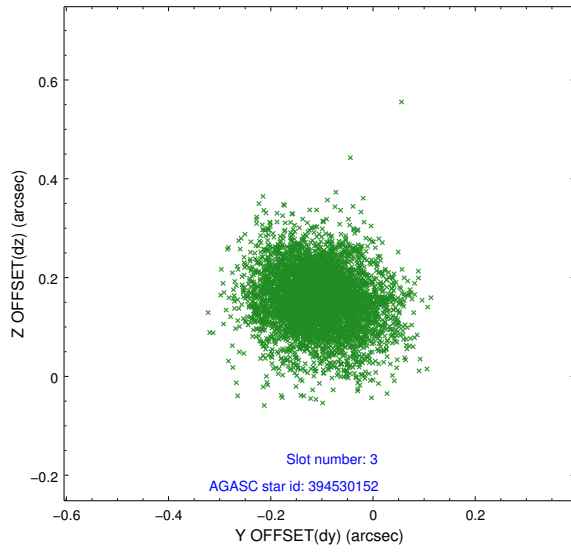


Slot Statistics

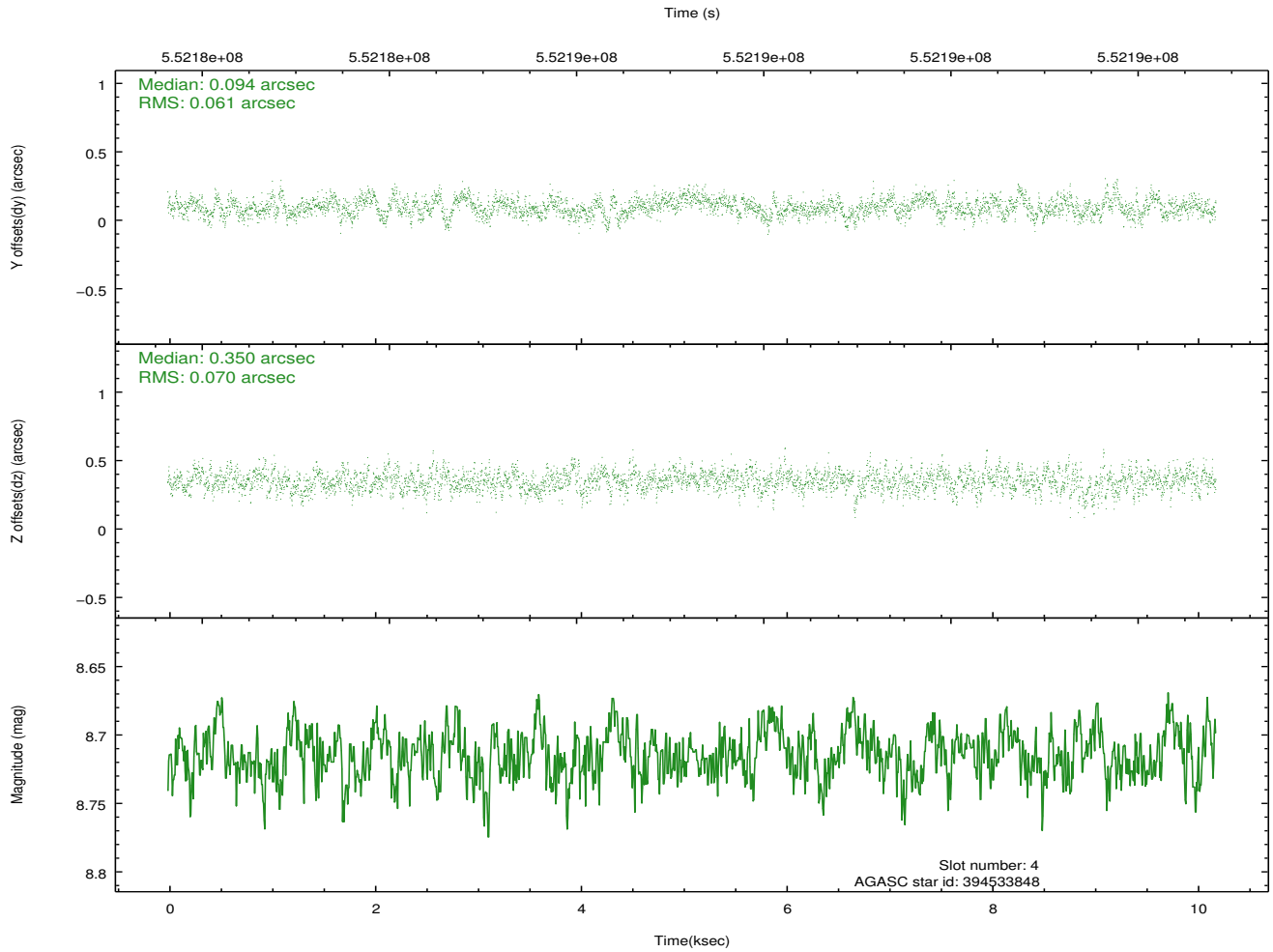
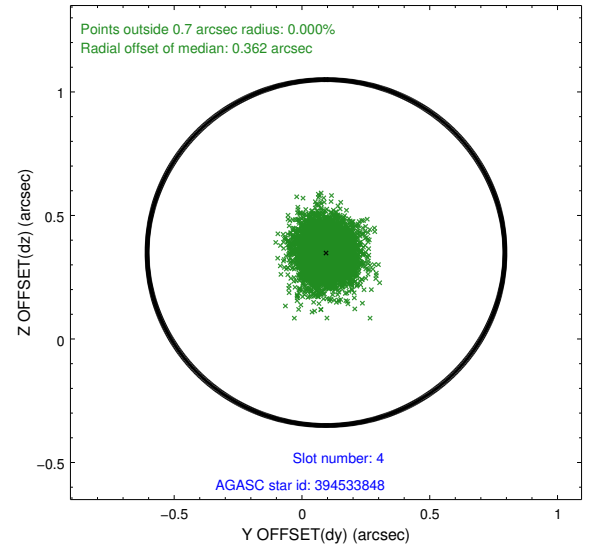
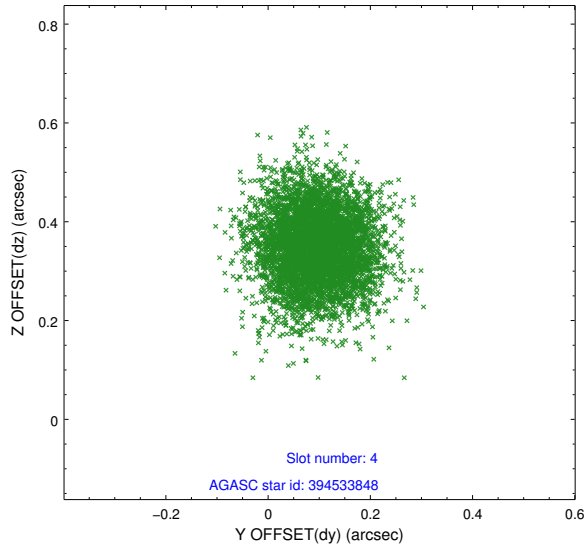
slot	status	used	id	mag	n_pts	med_dy	med_dz	dr1	dr2	ra	dec	mean_y	mean_z
0	FID		HRC-S-1	7.05	2486	0.007	-0.153	0.013	0.021	0.000000	0.000000	-1170.44	-466.95
1	FID		HRC-S-2	7.03	2486	0.296	-0.119	0.011	0.017	0.000000	0.000000	1229.06	-459.69
2	FID		HRC-S-3	7.05	2485	0.087	-0.031	0.012	0.019	0.000000	0.000000	-1172.61	562.52
3	GUIDE	used	394530152	7.48	4972	-0.110	0.157	0.094	0.158	166.075805	38.868252	-2285.60	-254.40
4	GUIDE	used	394533848	8.71	4972	0.094	0.350	0.099	0.160	166.382906	38.276007	-238.61	789.14
5	GUIDE	used	394543960	9.77	4957	0.174	0.231	0.179	0.295	165.802757	37.787371	1657.26	-692.16
6	GUIDE	used	394546712	6.59	4971	-0.214	0.326	0.113	0.183	166.451462	38.394357	-679.03	947.60
7	GUIDE	used	394546720	6.42	4970	0.047	-1.058	0.128	0.207	166.130115	38.241361	-50.50	92.46

2.4 Star Slots

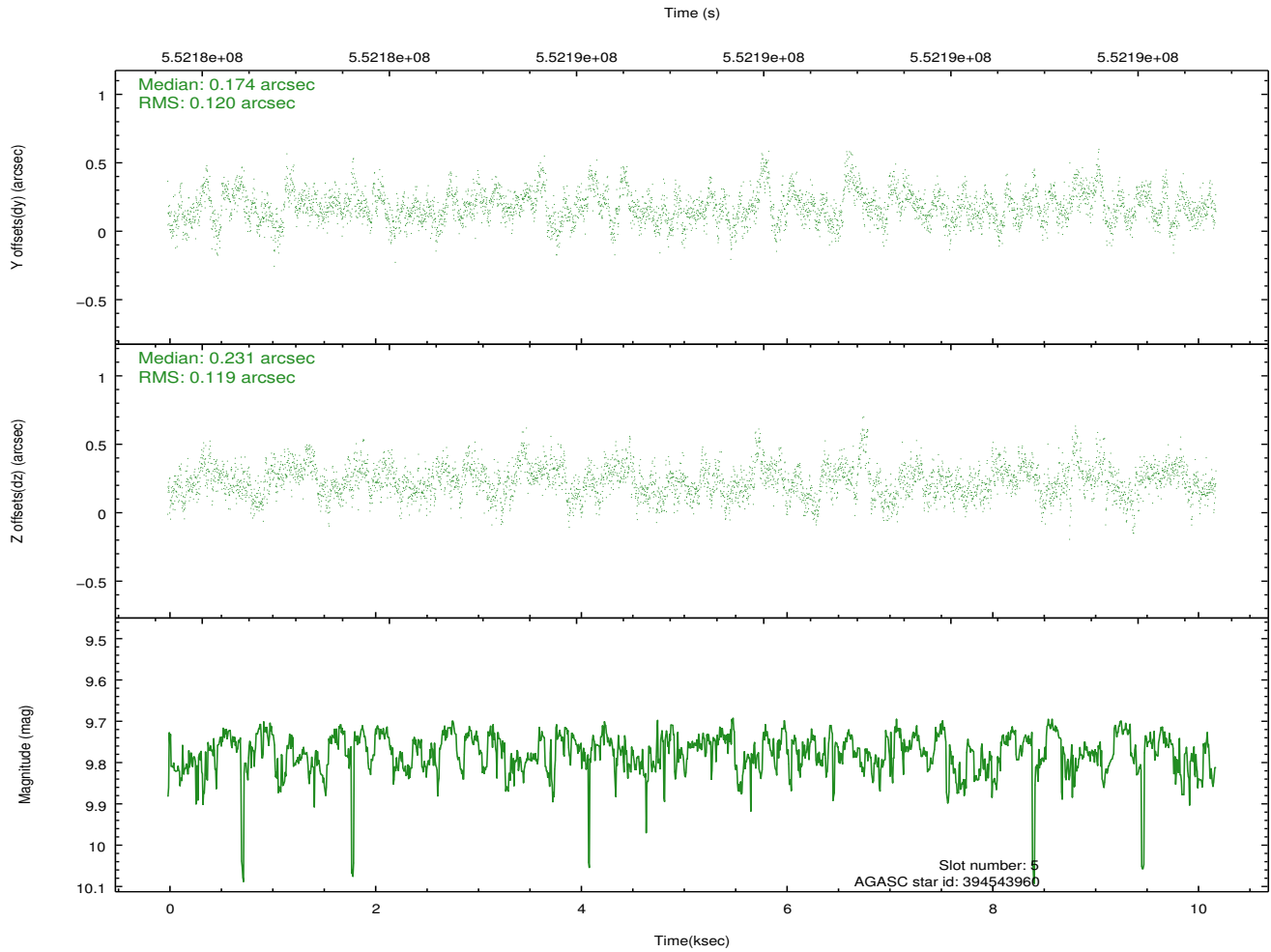
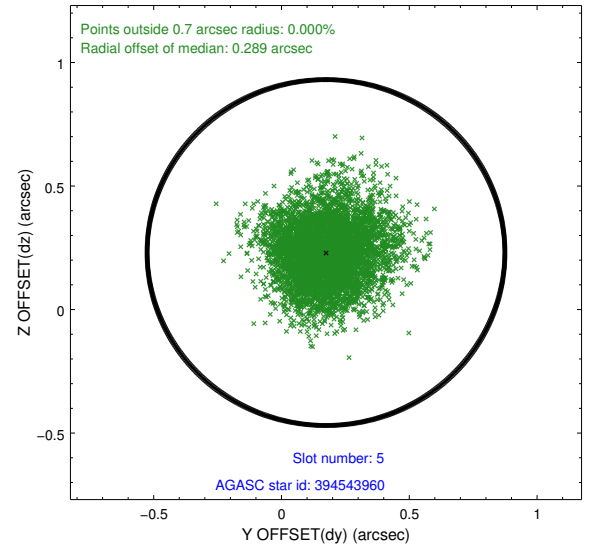
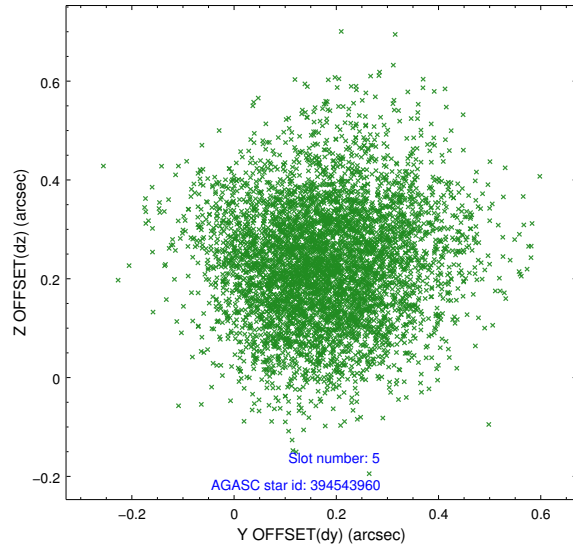
2.4.1 Slot 3



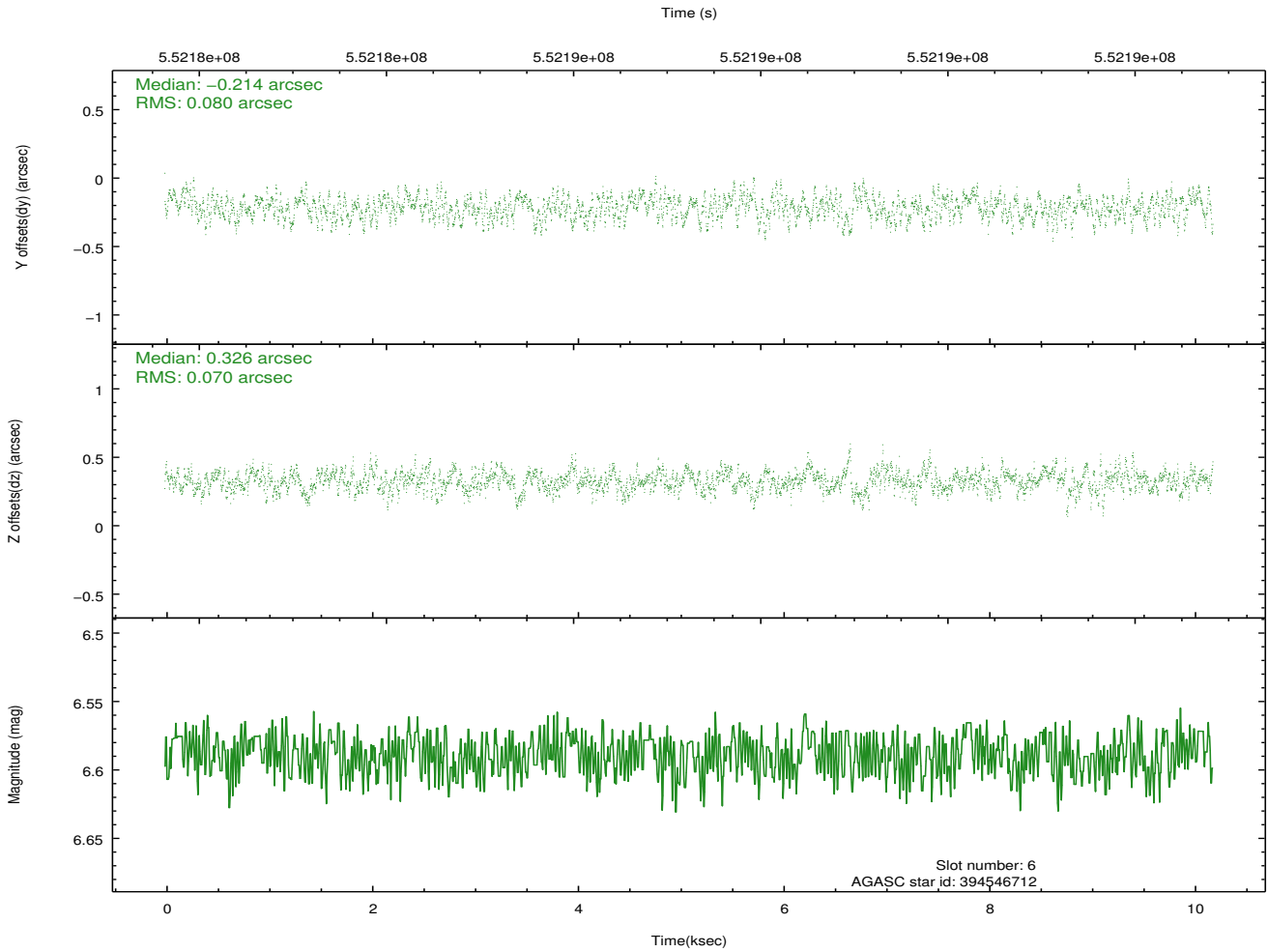
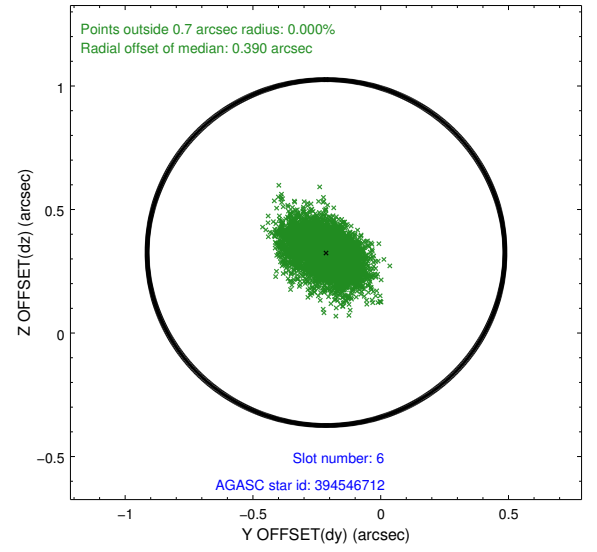
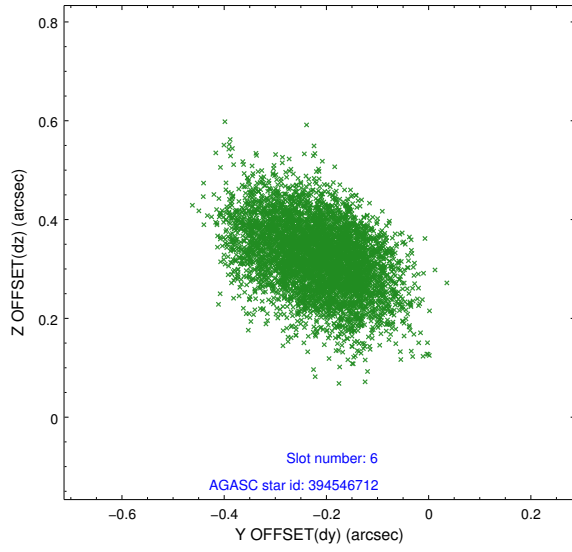
2.4.2 Slot 4



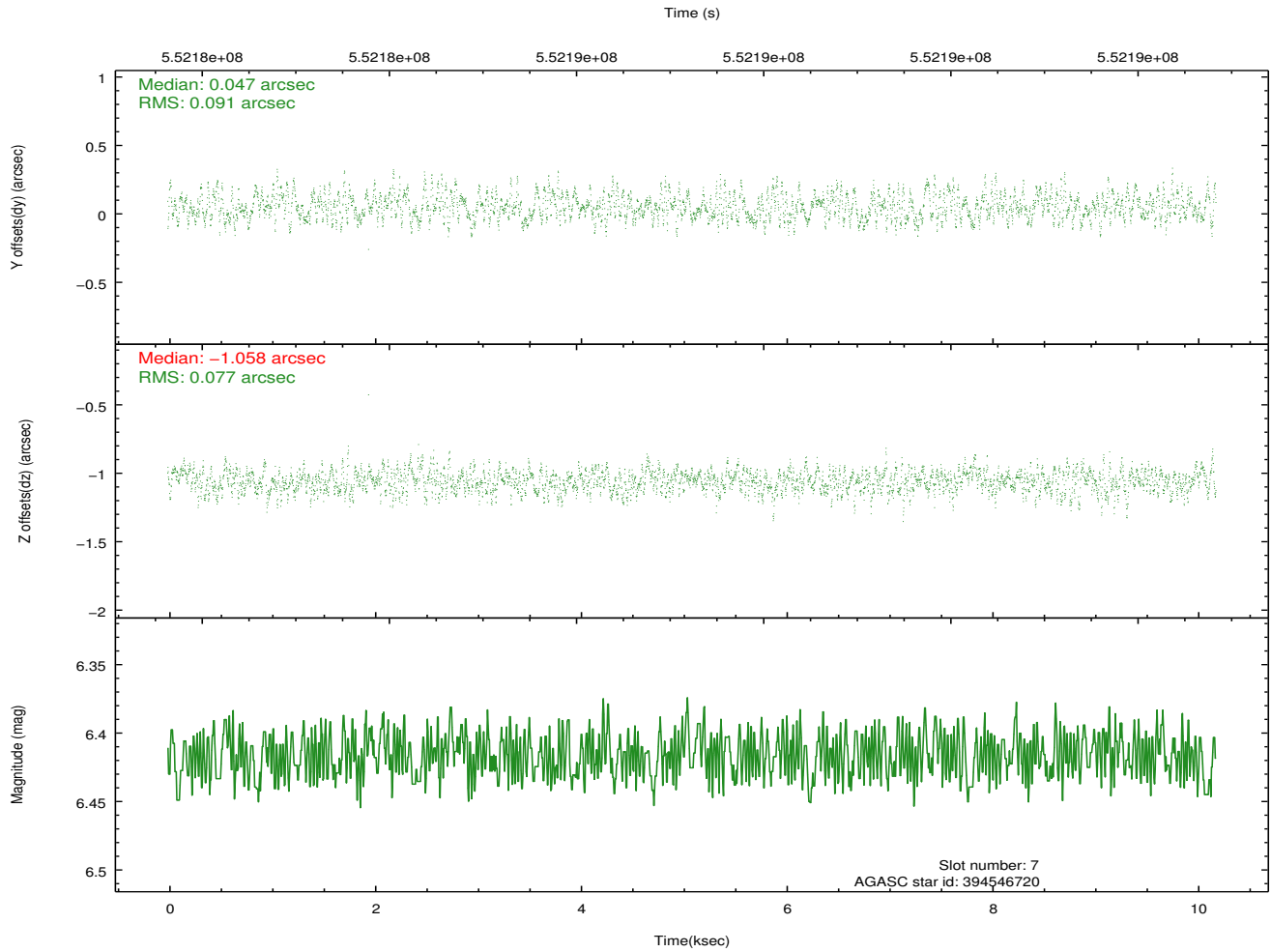
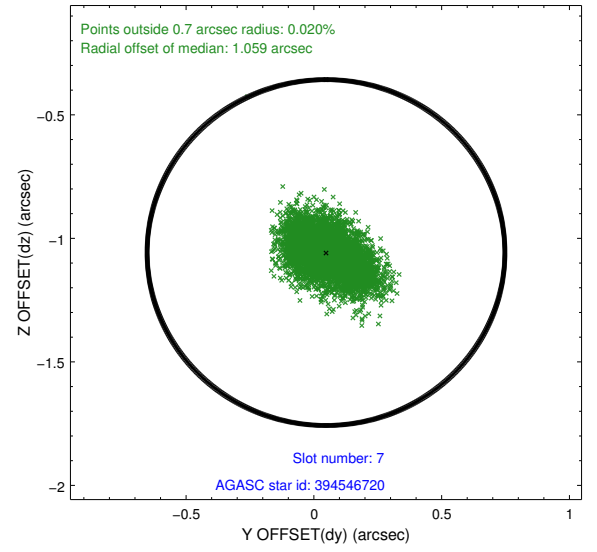
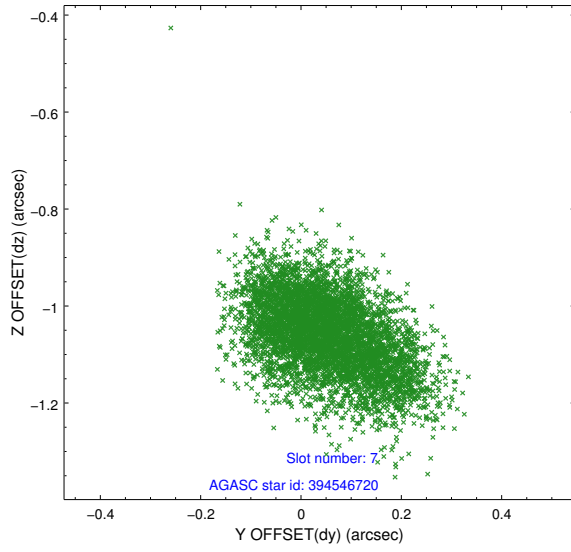
2.4.3 Slot 5



2.4.4 Slot 6

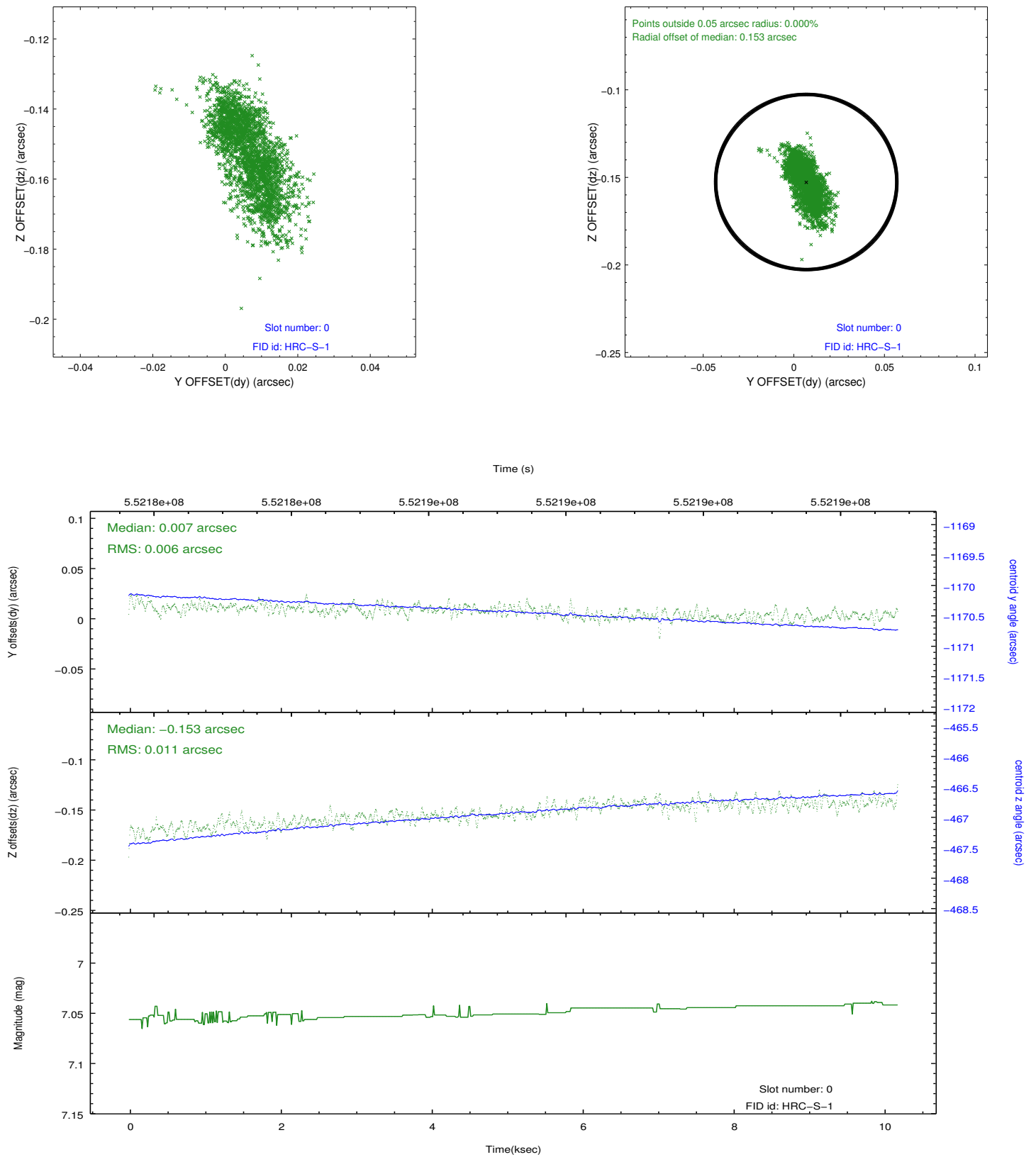


2.4.5 Slot 7

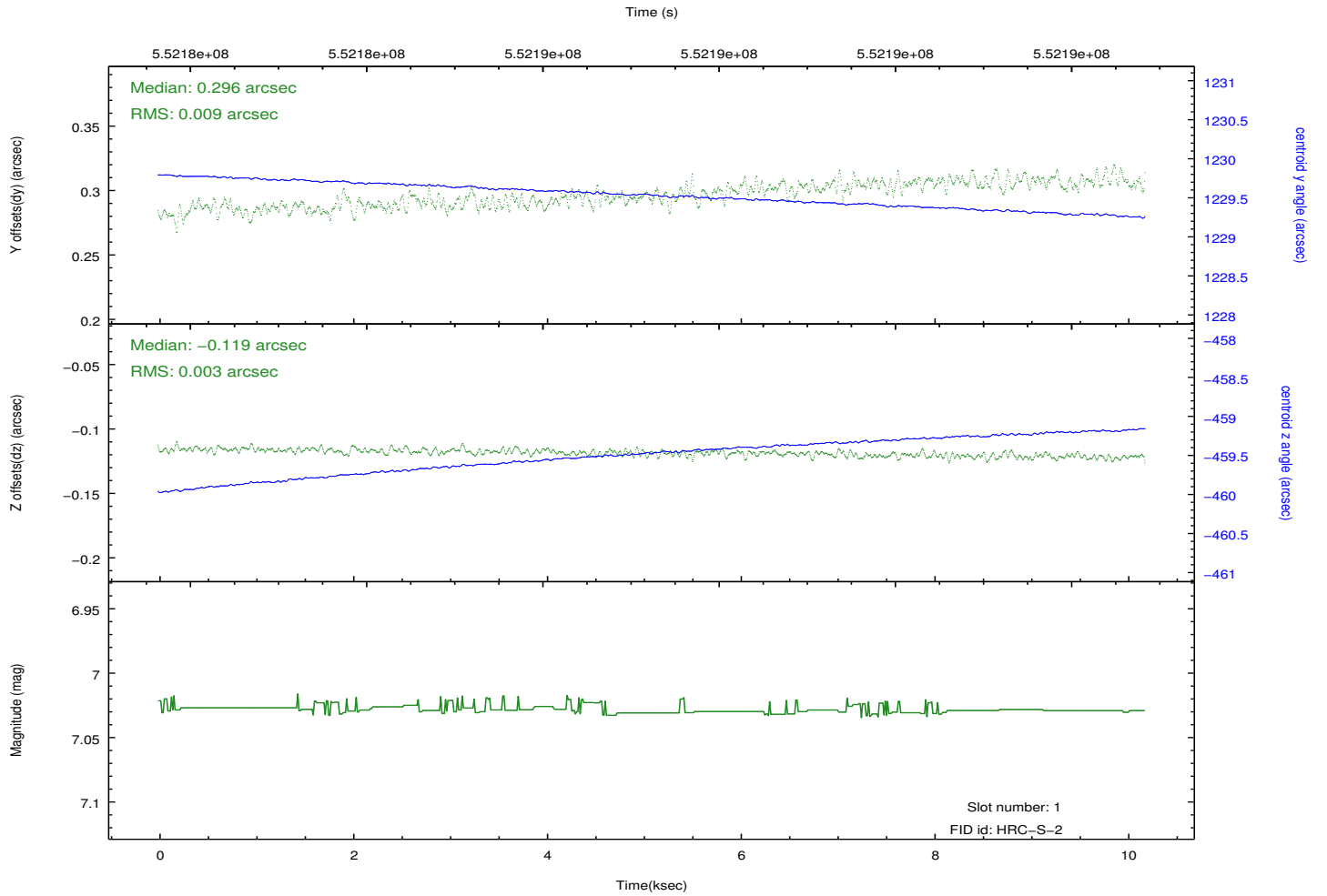
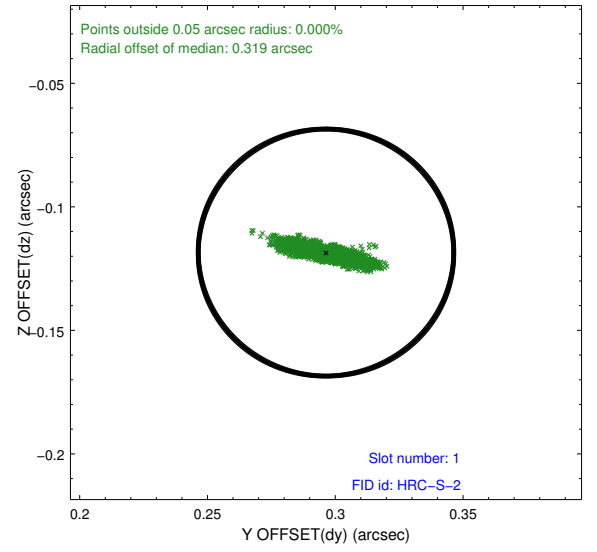
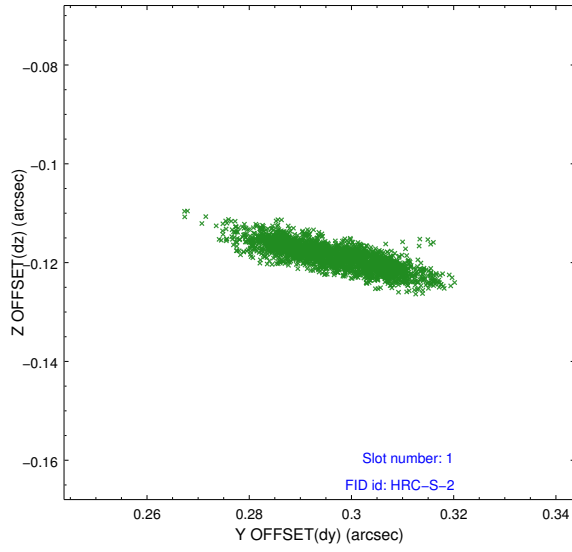


2.5 FID Slots

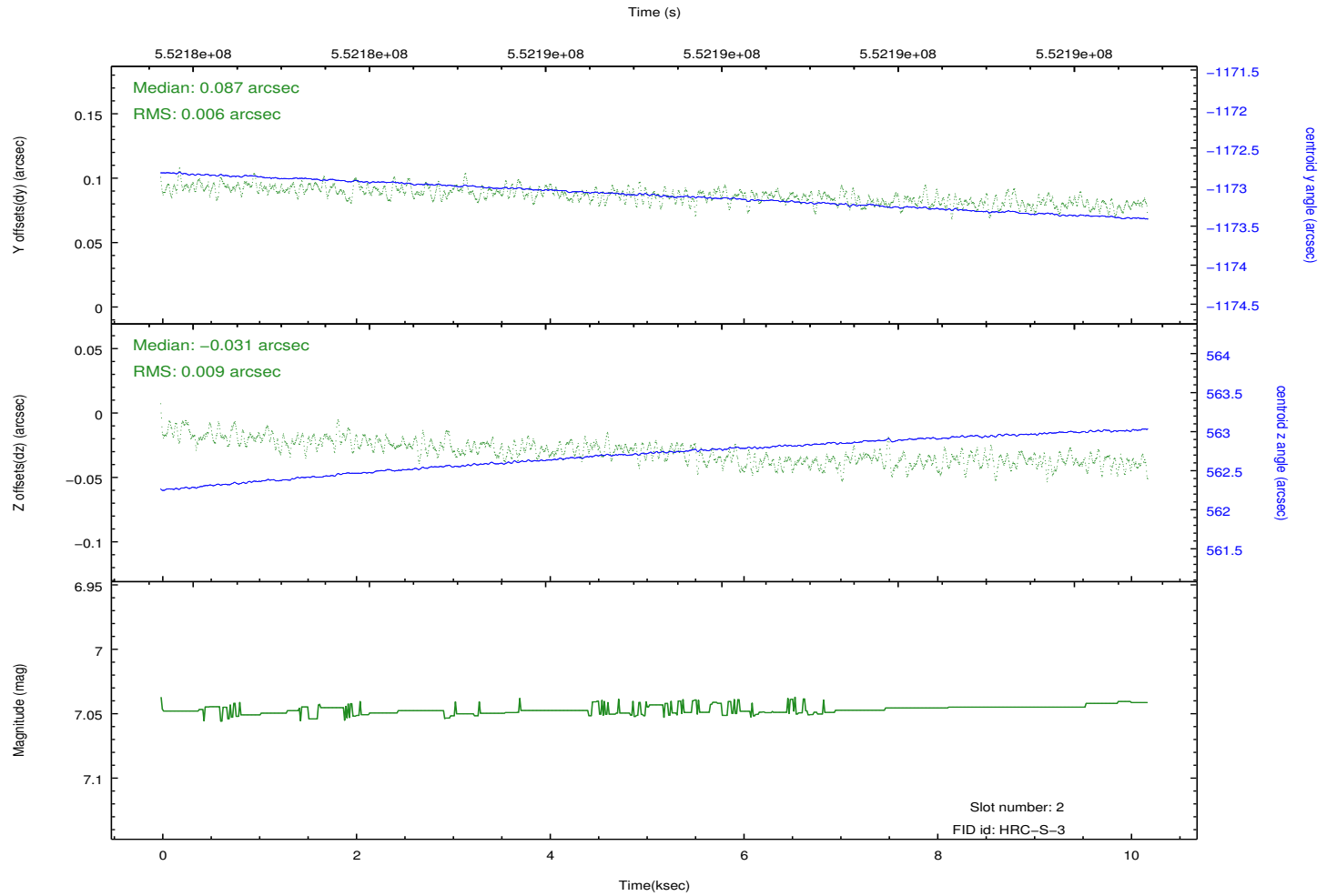
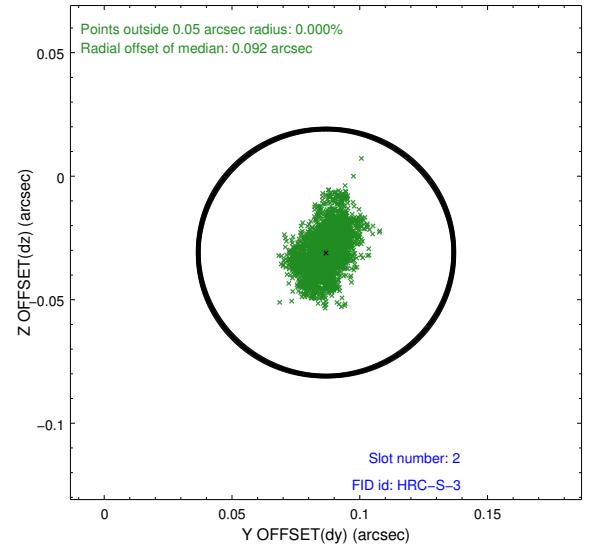
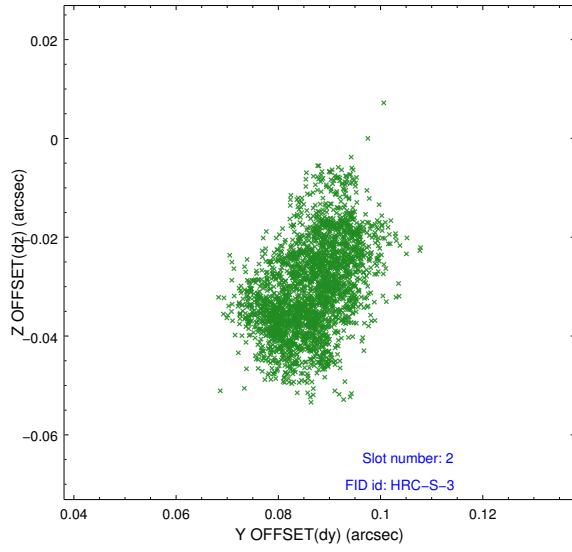
2.5.1 Slot 0



2.5.2 Slot 1

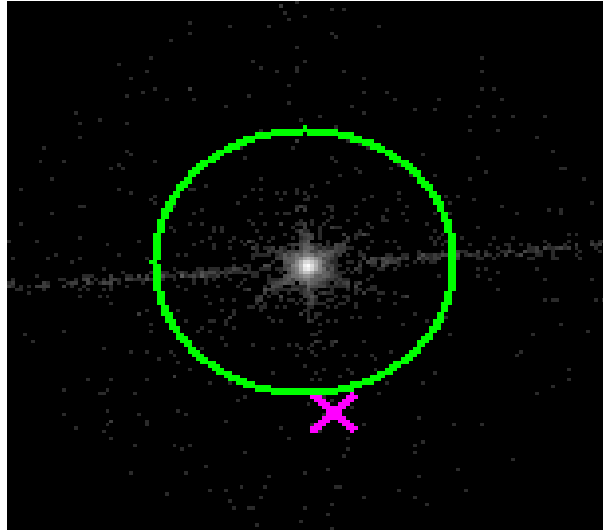


2.5.3 Slot 2

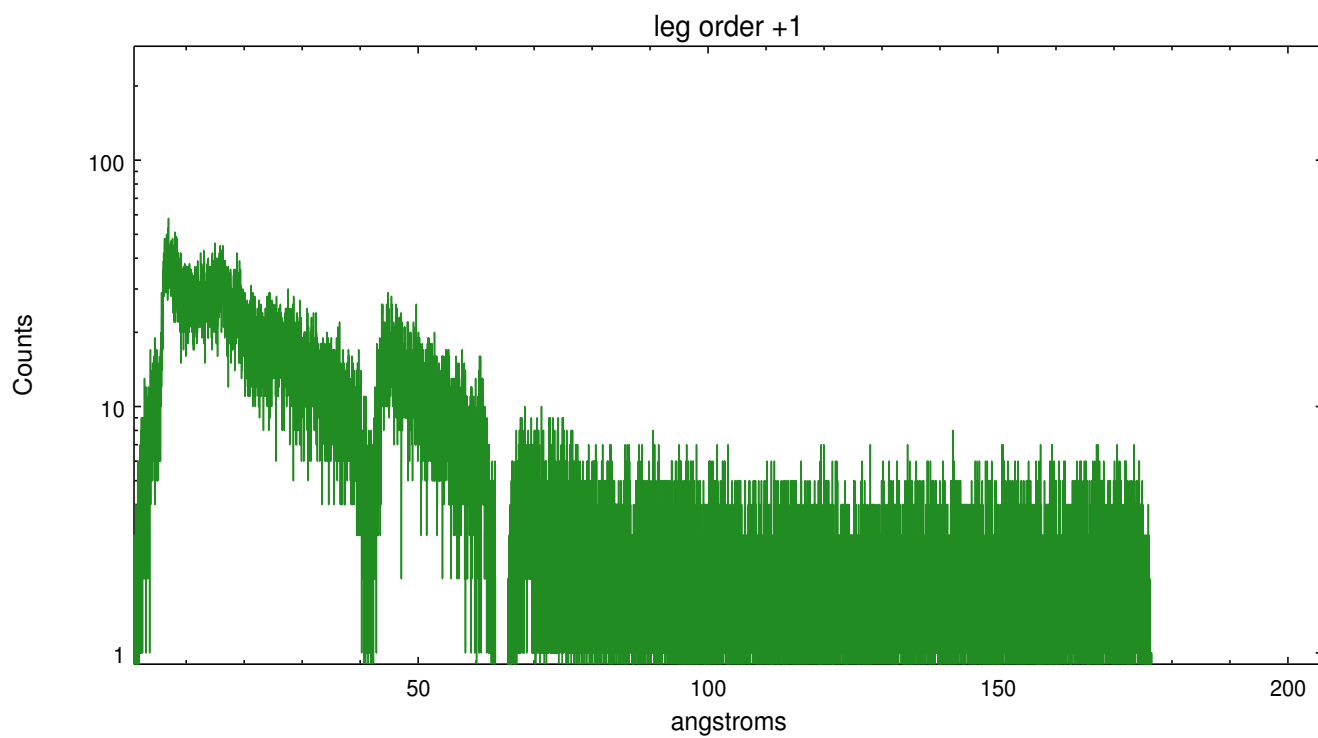
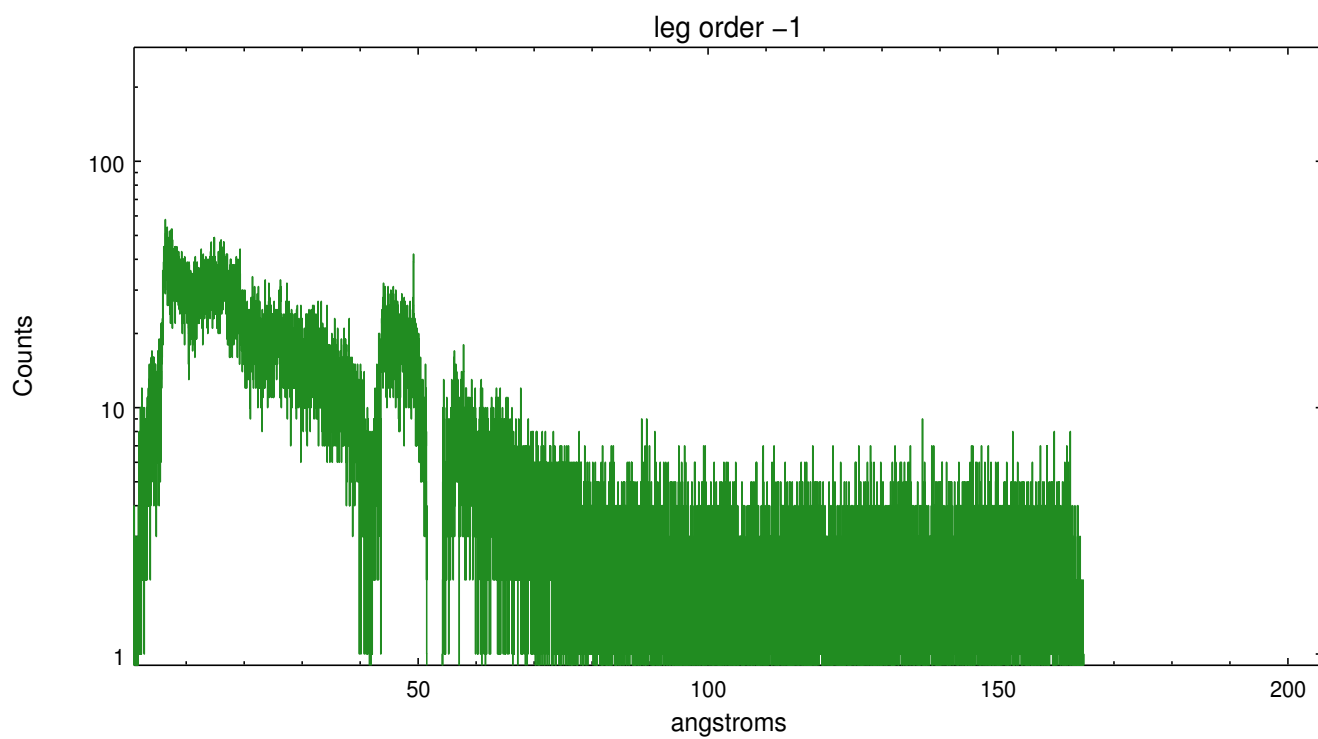


3 Gratings

3.1 LETG Arm



LETG Zero Order



A Summary

A.1 Status

V&V Scientist	Joy Nichols
V&V Date (YYYY-MM-DD)	2015.07.06
V&V Edition	1
V&V Disposition and Status	OK
V&V Charge Time	10.189781823397

A.2 Comments