

V&V Reference Report

L2 ASCDS Version : 10.2.1

Observation 16438 - L2 Version 2
Chandra X-Ray Center

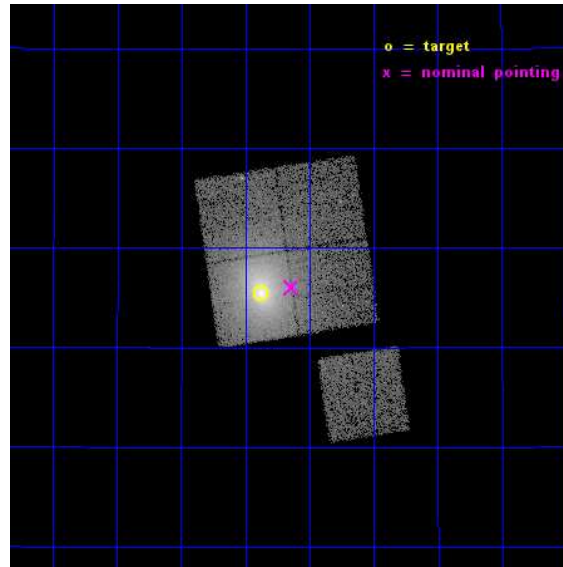
L2 Processing Date : Dec 10 2014

Contents

1	Front	2
2	OBI	3
2.1	OBI	3
2.1.1	Images	3
2.1.2	Bias	3
2.1.3	Parameters	4
2.1.4	Events	4
2.2	Compared Parameters	5
2.3	Aspect	6
2.4	Star Slots	9
2.4.1	Slot 3	9
2.4.2	Slot 4	10
2.4.3	Slot 5	11
2.4.4	Slot 6	12
2.4.5	Slot 7	13
2.5	FID Slots	14
2.5.1	Slot 0	14
2.5.2	Slot 1	15
2.5.3	Slot 2	16
A	Summary	17
A.1	Status	17
A.2	Comments	17

1 Front

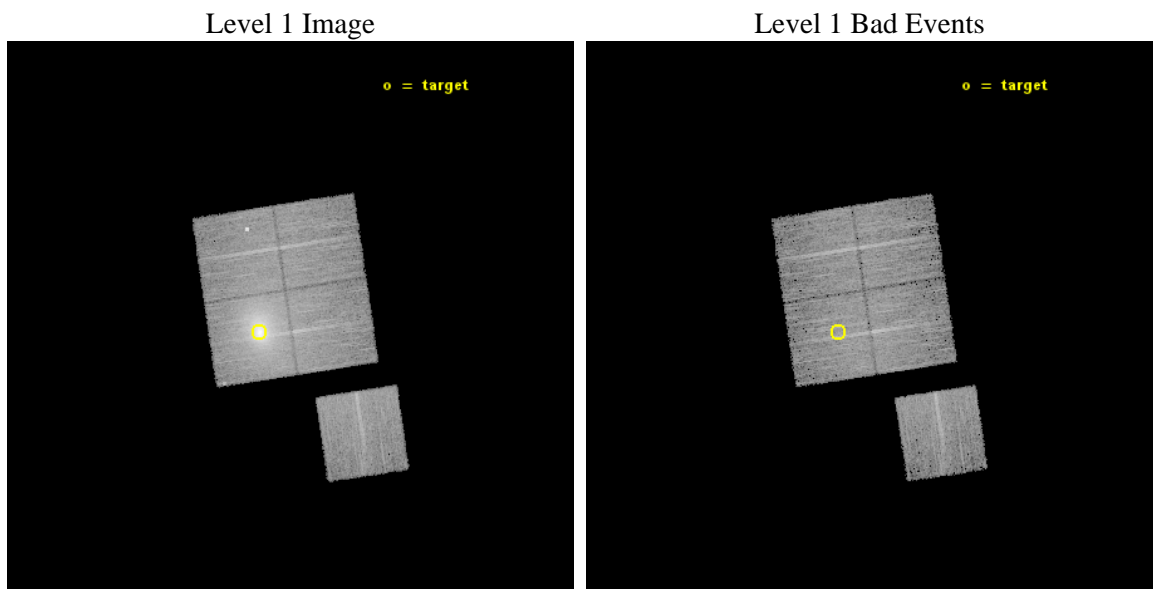
seq_num	890085	Sequence number
obs_id	16438	Observation id
title	AO-15 Calibration Observations of A1795	Proposal title
observer	Dr. CXC Calibration	Principal investigator
object	A1795	Source name
dtcycle	0	
cycle	P	events from which exps? Prim/Second/Both
ra_targ	207.219583	Observer's specified target RA [deg]
dec_targ	26.590833	Observer's specified target Dec [deg]
ra_nom	207.16014105149	Nominal RA [deg]
dec_nom	26.600775379322	Nominal Dec [deg]
roll_nom	171.43358448217	Nominal Roll [deg]
revision	2	Processing version of data
ontime	14890.966093838	Sum of GTIs [s]
livetime	14696.404659252	Livetime [s]
ontime0	14887.701913536	Sum of GTIs [s]
ontime1	14890.884013832	Sum of GTIs [s]
ontime2	14890.925063908	Sum of GTIs [s]
ontime3	14890.966093838	Sum of GTIs [s]
ontime6	14887.6608634	Sum of GTIs [s]
l2events	138090	Number of level 2 events



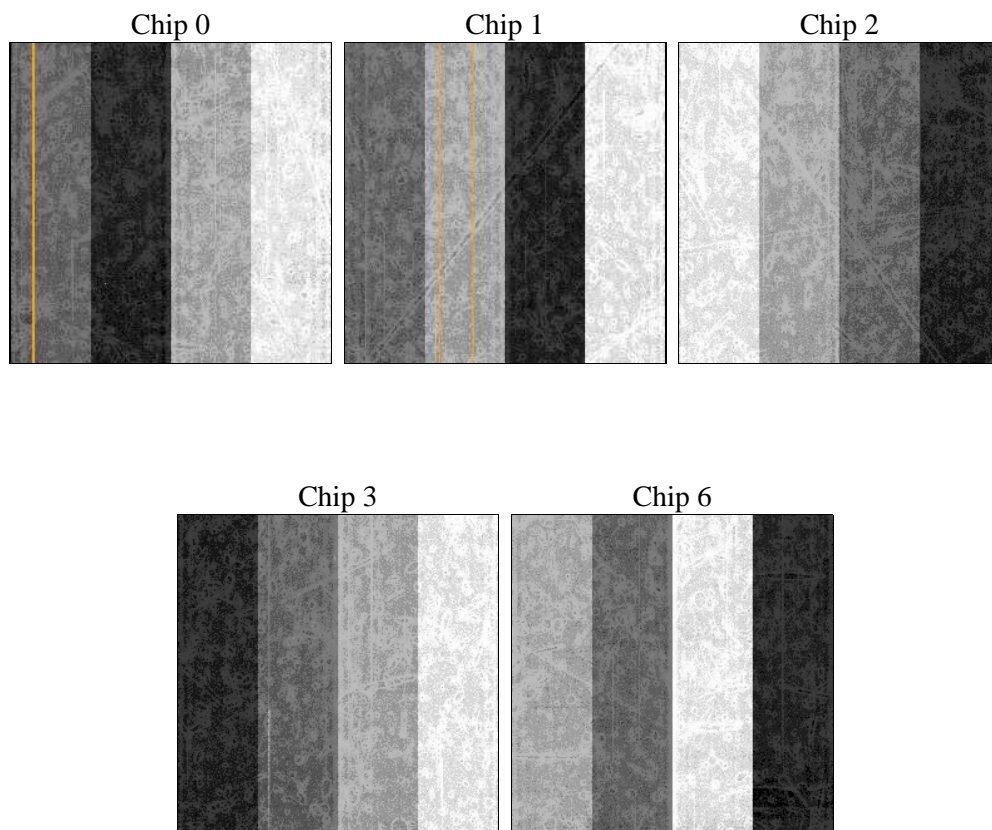
2 OBI

2.1 OBI

2.1.1 Images



2.1.2 Bias



2.1.3 Parameters

obi_num	0	Obi number	sched_exp_time	15119.077000	[s] Scheduled observation exposure time
ascdsver	10.3.1	Processing system revision	ontime	14890.966093838	Sum of GTIs [s]
caldbver	4.6.4	 	ontime0	14887.701913536	Sum of GTIs [s]
date	2014-12-11T02:40:22	Date and time of file creation	ontime1	14890.884013832	Sum of GTIs [s]
revision	2	Processing version of data	ontime2	14890.925063908	Sum of GTIs [s]
			ontime3	14890.966093838	Sum of GTIs [s]
			ontime6	14887.6608634	Sum of GTIs [s]
			l1events	449625	Number of level 1 events

2.1.4 Events

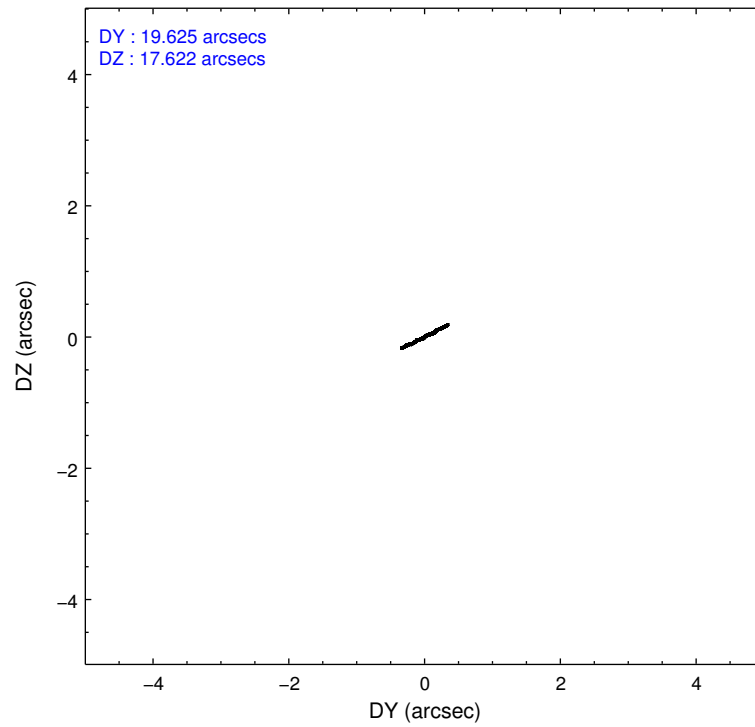
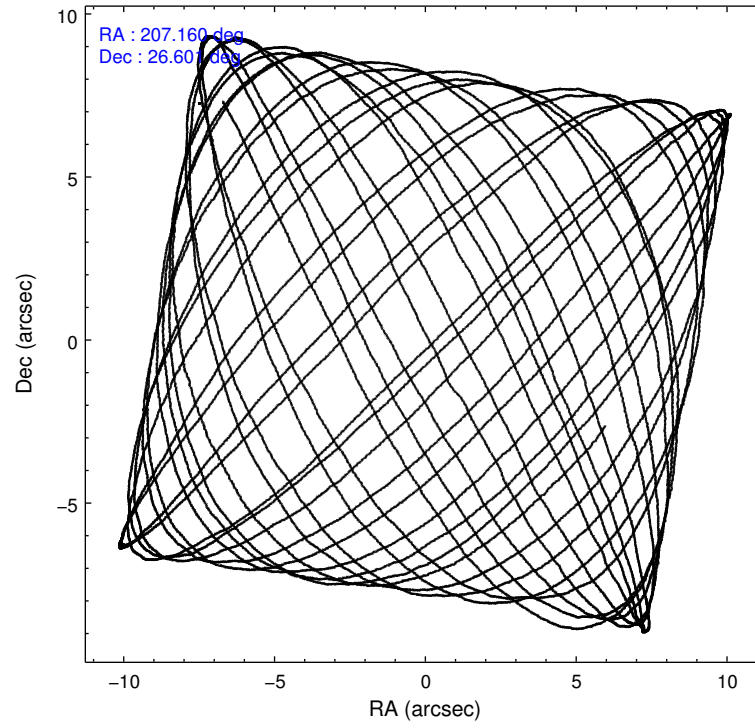
	ccd 0	ccd 1	ccd 2	ccd 3	ccd 6
level 1 events	67207	74106	76182	164205	67925
rejected events	57165	56834	63005	63071	59259
rejected %	85%	76%	82%	38%	87%

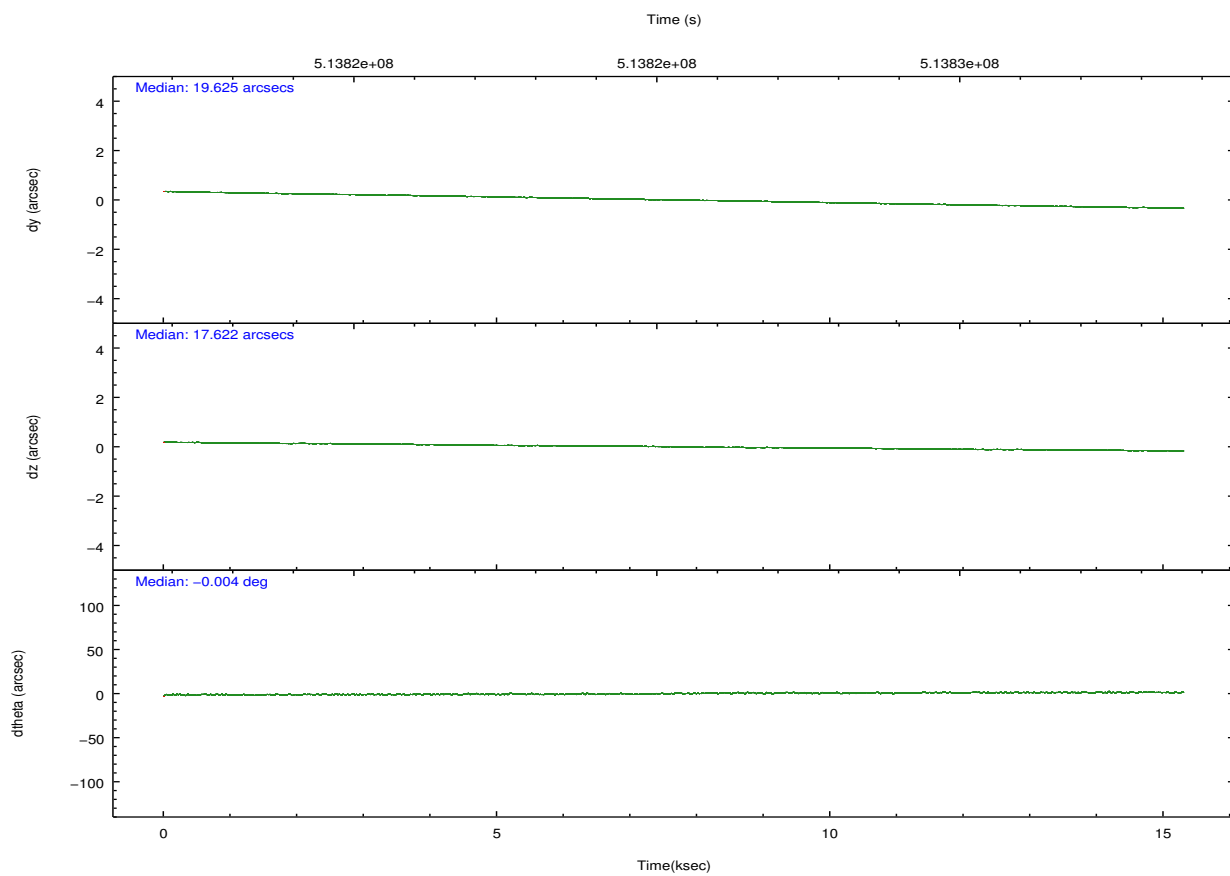
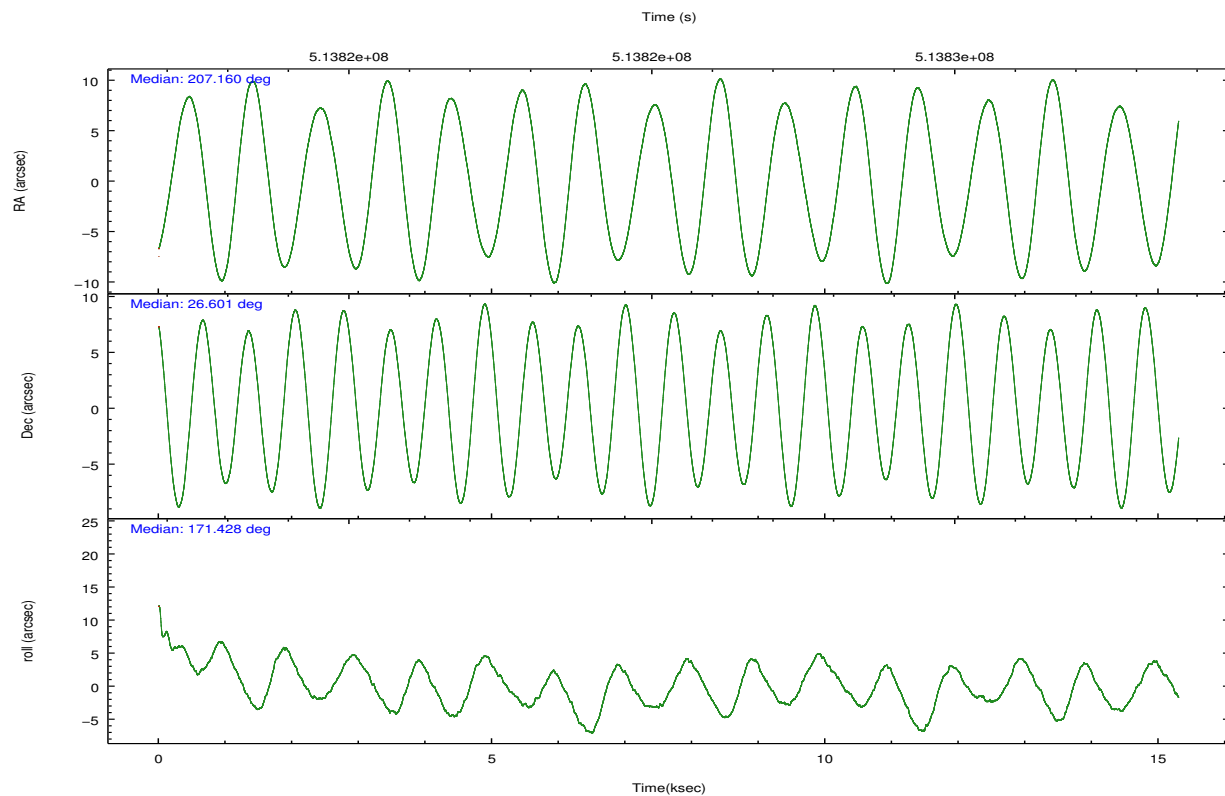
	ccd 0	ccd 1	ccd 2	ccd 3	ccd 6
grade 0 events	4263	10062	7219	79151	3099
	6%	13%	9%	48%	4%
grade 1 events	33	49	62	320	28
	0%	0%	0%	0%	0%
grade 2 events	2161	2737	2379	10954	1924
	3%	3%	3%	6%	2%
grade 3 events	956	1141	954	3569	781
	1%	1%	1%	2%	1%
grade 4 events	845	1052	938	3538	877
	1%	1%	1%	2%	1%
grade 5 events	3263	3583	3063	4110	3455
	4%	4%	4%	2%	5%
grade 6 events	1818	2281	1689	3949	1986
	2%	3%	2%	2%	2%
grade 7 events	53868	53201	59878	58614	55775
	80%	71%	78%	35%	82%

2.2 Compared Parameters

Parameter	Planned	Actual	Parameter	Planned	Actual
Instrument	ACIS	ACIS	Obspar format version number	7	7
Detector	ACIS-01236	ACIS-01236	Obspar file type	PREDICTED	ACTUAL
Grating	NONE	NONE	Obspar update status	NONE	UPDATED
Data mode	VFAINT	VFAINT	Number of optional ACIS chips dropped	0	0
Observation mode	POINTING	POINTING	On-chip summing requested	N	N
[deg] Pointing RA	207.188741	207.1601410514892	Subarray requested	NONE	NONE
[deg] Pointing Dec	26.610960	26.60077537932201	Alternating exposures requested	N	N
[deg] Pointing Roll	171.212090	171.4335844821714	[s] Primary exposure time	0.000000	3.1
[s] Window start time (MET)	512697667.184000	512697667.184000			
[s] Window stop time (MET)	515203267.184000	515203267.184000			
[mm] SIM focus pos	-0.782348	-0.7809083437167272			
[mm] SIM defocus	0	0.001439871863259334			
[mm] SIM translation stage pos	-224.862463	-224.8577317338124			
[mm] SIM translation stage offset	-8.73	-8.73472126911733			
[s] Observation start time (MET)	513817825.184000	513817448.78375			
Observation start date	2014-04-13T23:09:18	2014-04-13T23:04:08			
[s] Observation end time (MET)	513832944.184000	513833178.43462			
Observation end date	2014-04-14T03:21:17	2014-04-14T03:26:18			
Read mode	TIMED	TIMED			

2.3 Aspect



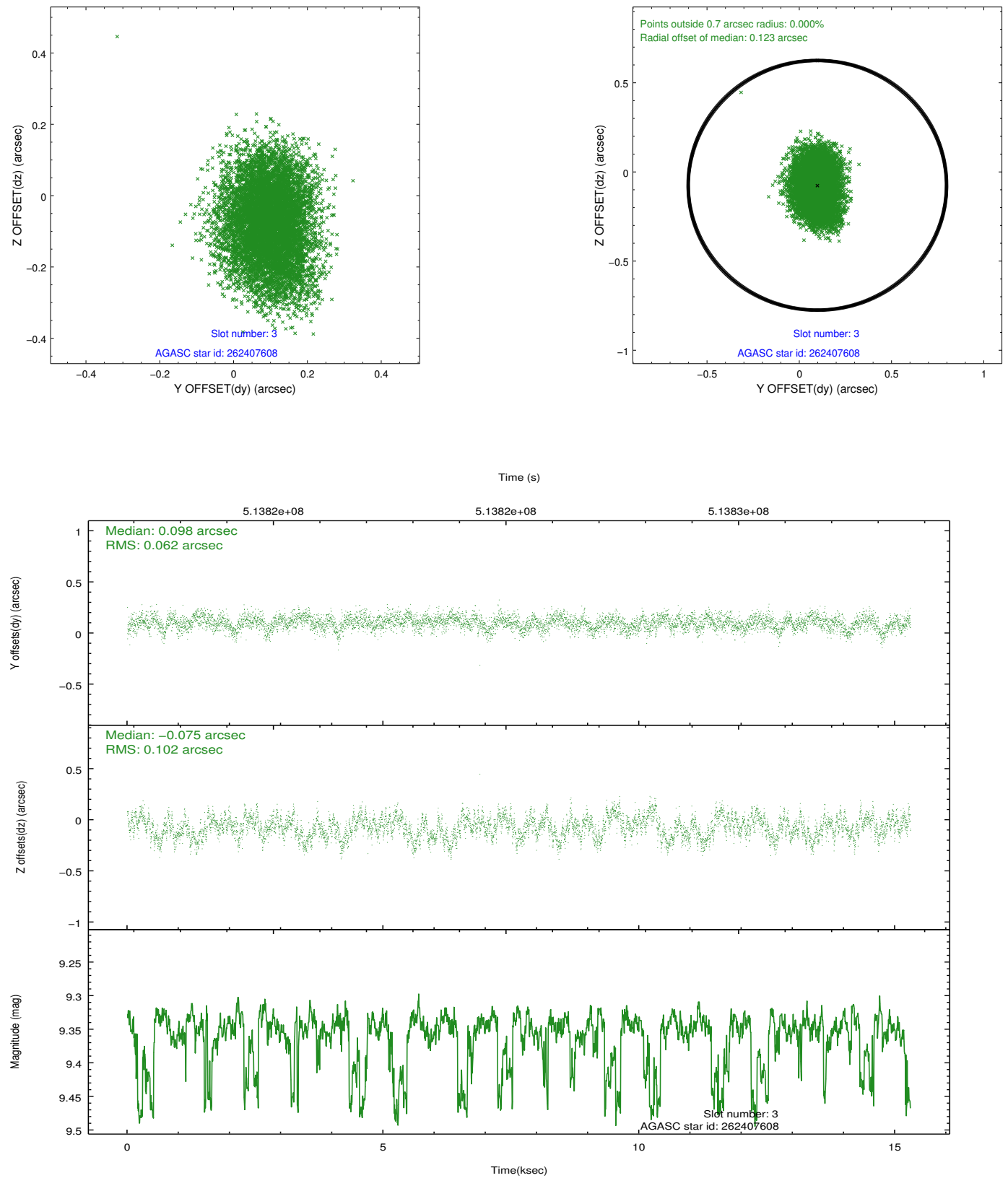


Slot Statistics

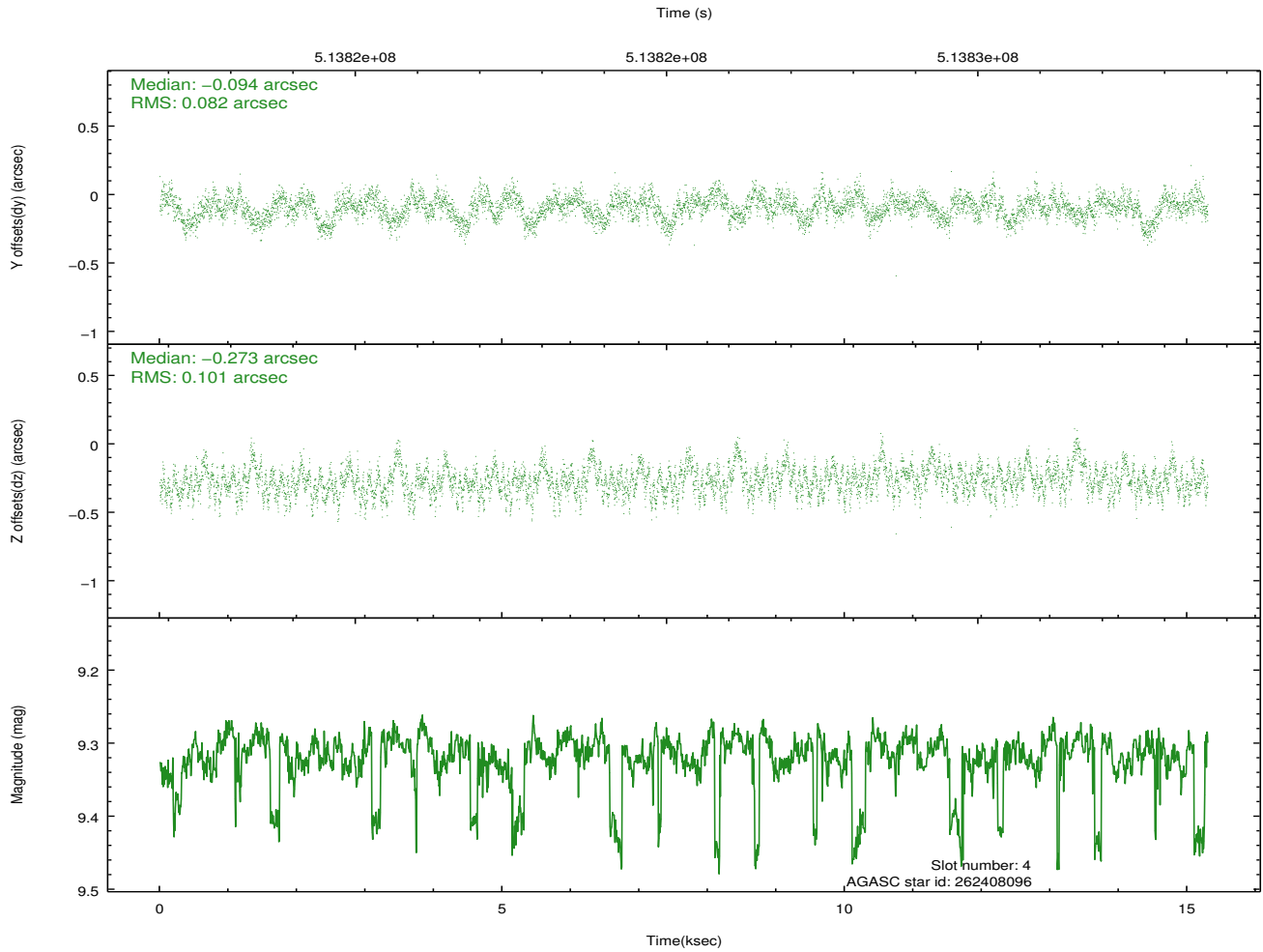
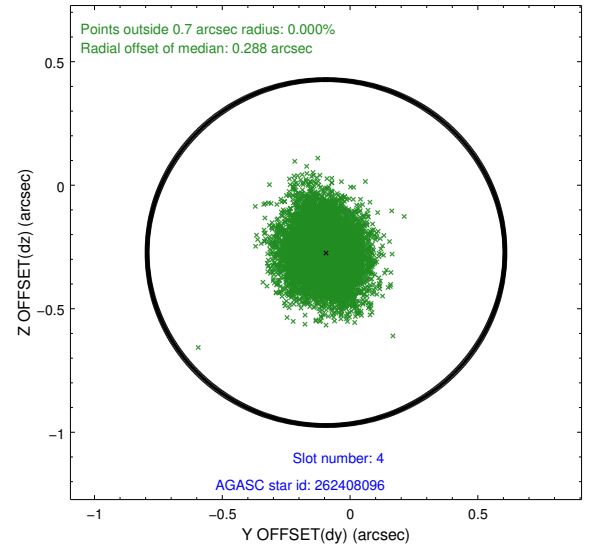
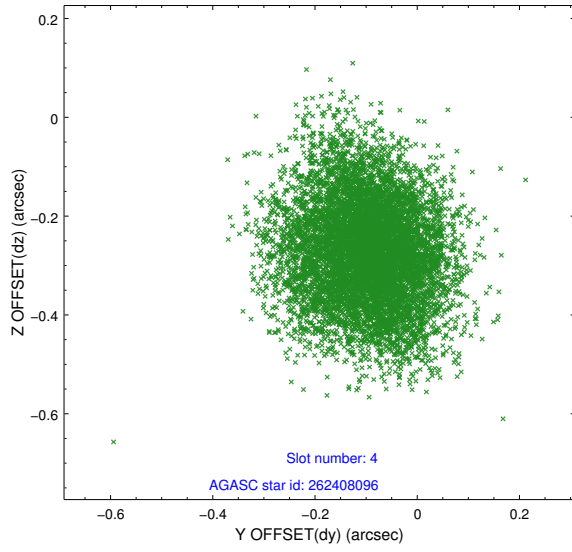
slot	status	used	id	mag	n_pts	med_dy	med_dz	dr1	dr2	ra	dec	mean_y	mean_z
0	FID		ACIS-I-1	7.18	3733	0.129	-0.102	0.014	0.020	0.000000	0.000000	919.71	-1020.69
1	FID		ACIS-I-5	7.17	3733	-0.316	0.094	0.009	0.014	0.000000	0.000000	-1828.74	876.72
2	FID		ACIS-I-6	7.19	3733	0.095	0.078	0.009	0.014	0.000000	0.000000	384.82	1521.61
3	GUIDE	used	262407608	9.35	7459	0.098	-0.075	0.128	0.207	207.378401	26.435507	-700.43	530.41
4	GUIDE	used	262408096	9.32	7459	-0.094	-0.273	0.139	0.224	207.011678	26.515421	511.85	426.52
5	GUIDE	used	262408512	7.99	7464	0.028	0.149	0.073	0.120	207.800210	27.128796	-1649.98	-2146.16
6	GUIDE	used	262408936	9.68	7325	-0.103	0.135	0.149	0.242	207.154731	26.726554	171.30	-394.51
7	GUIDE	used	262409552	8.19	7459	0.077	0.070	0.099	0.152	206.584269	27.192805	2234.39	-1778.32

2.4 Star Slots

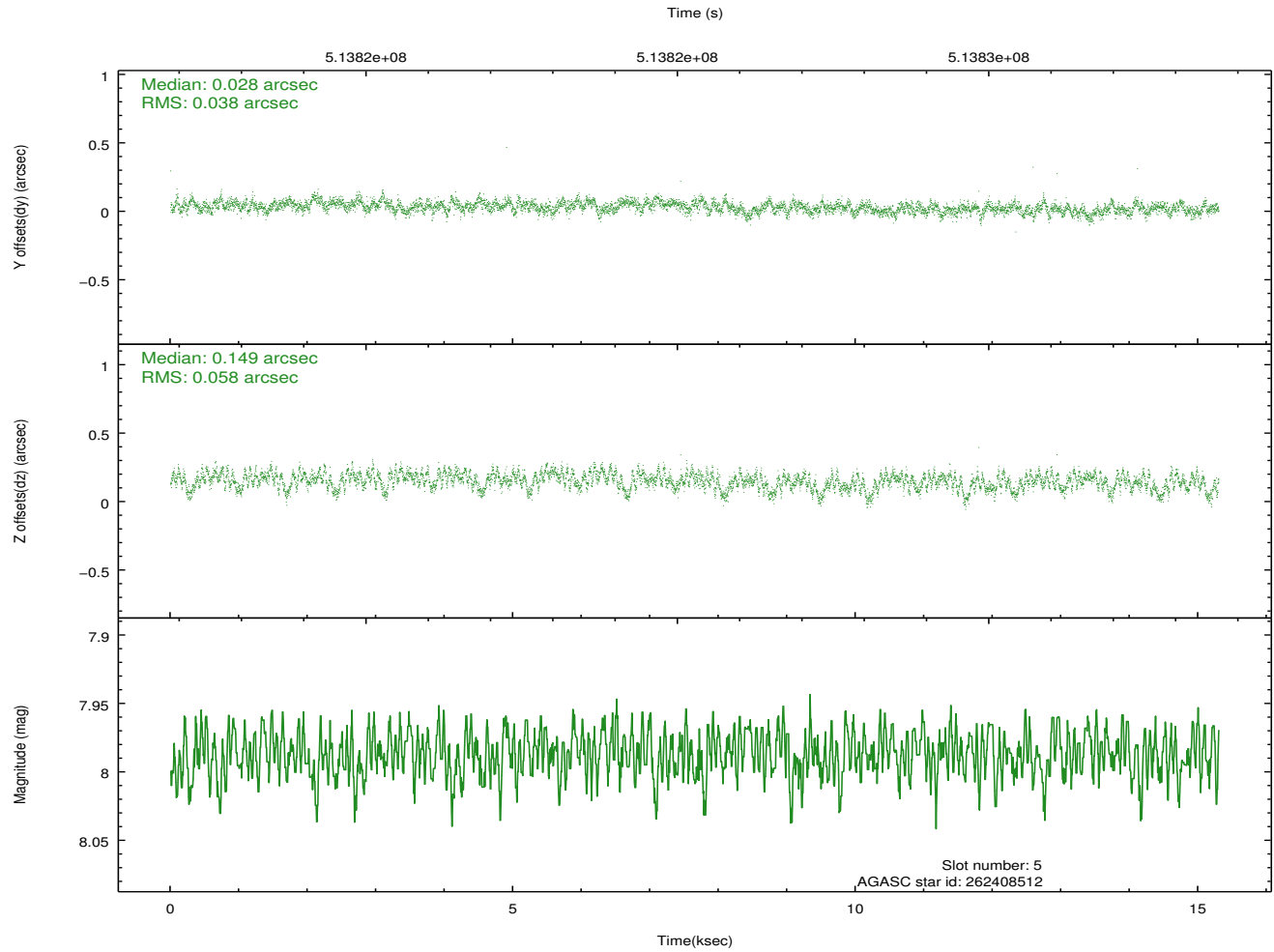
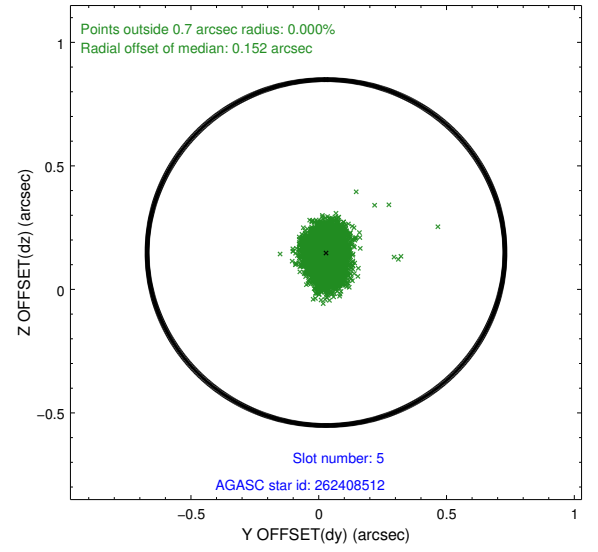
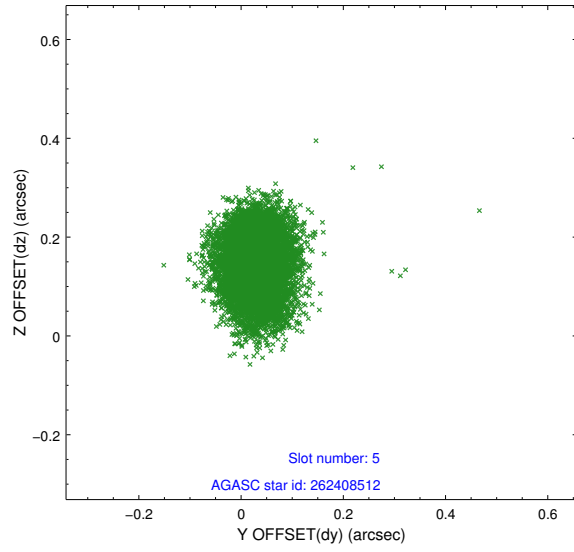
2.4.1 Slot 3



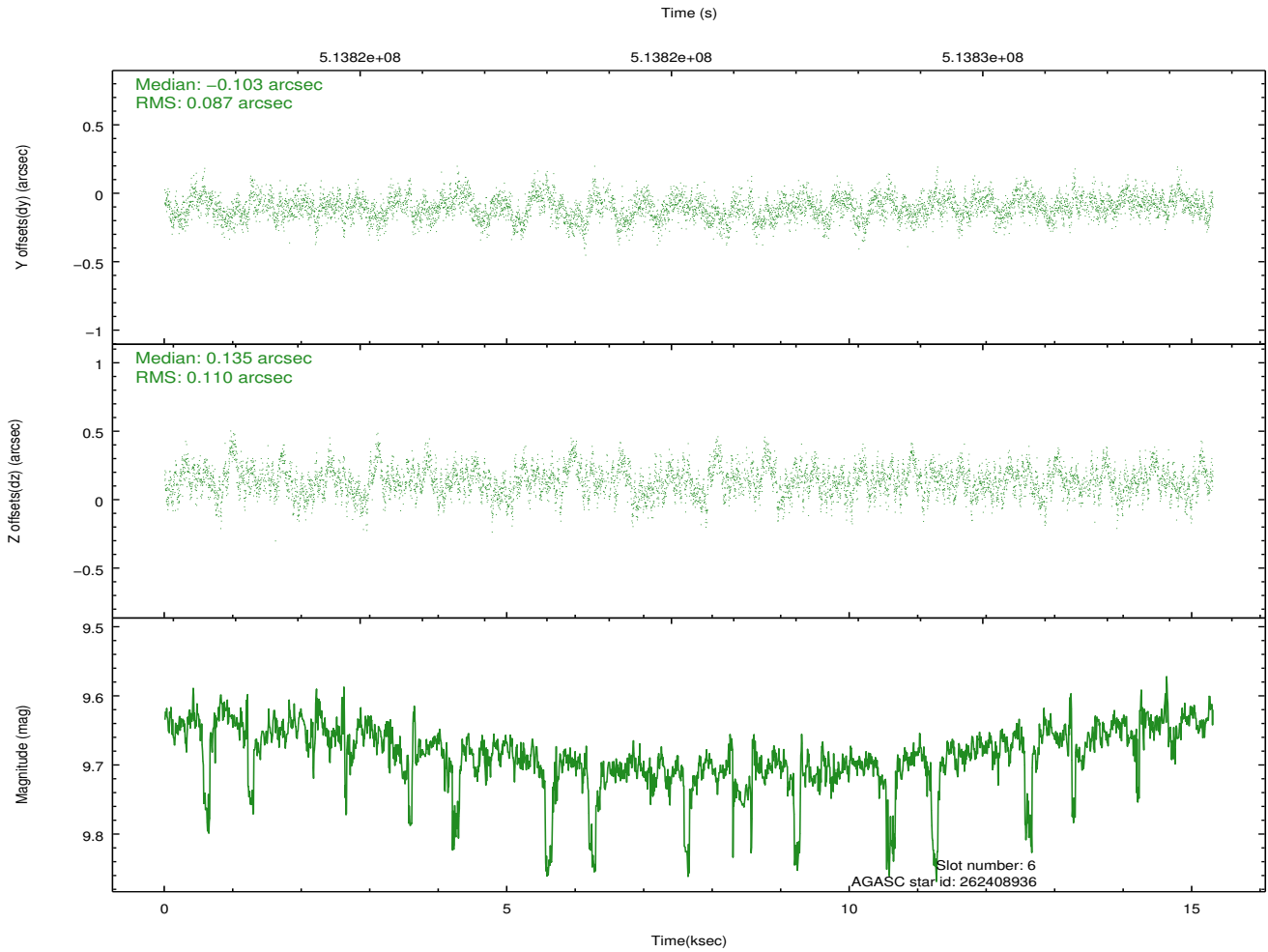
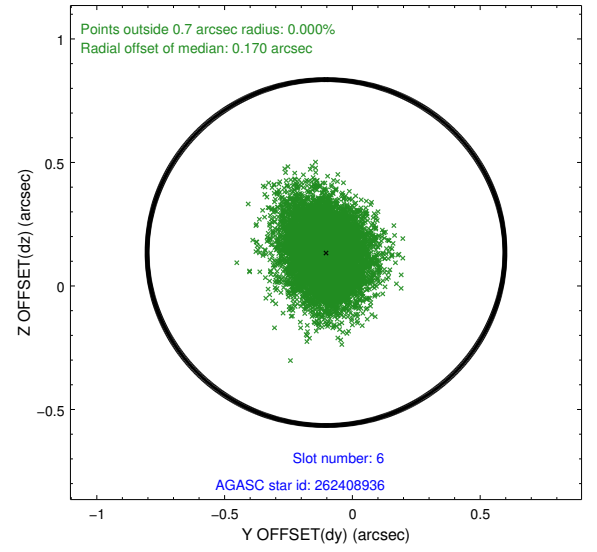
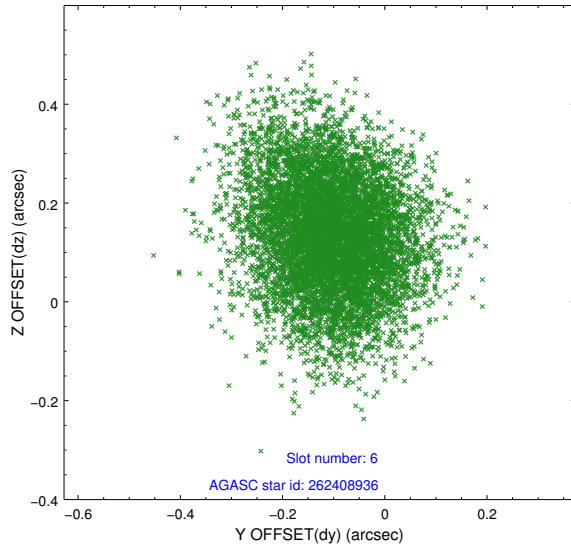
2.4.2 Slot 4



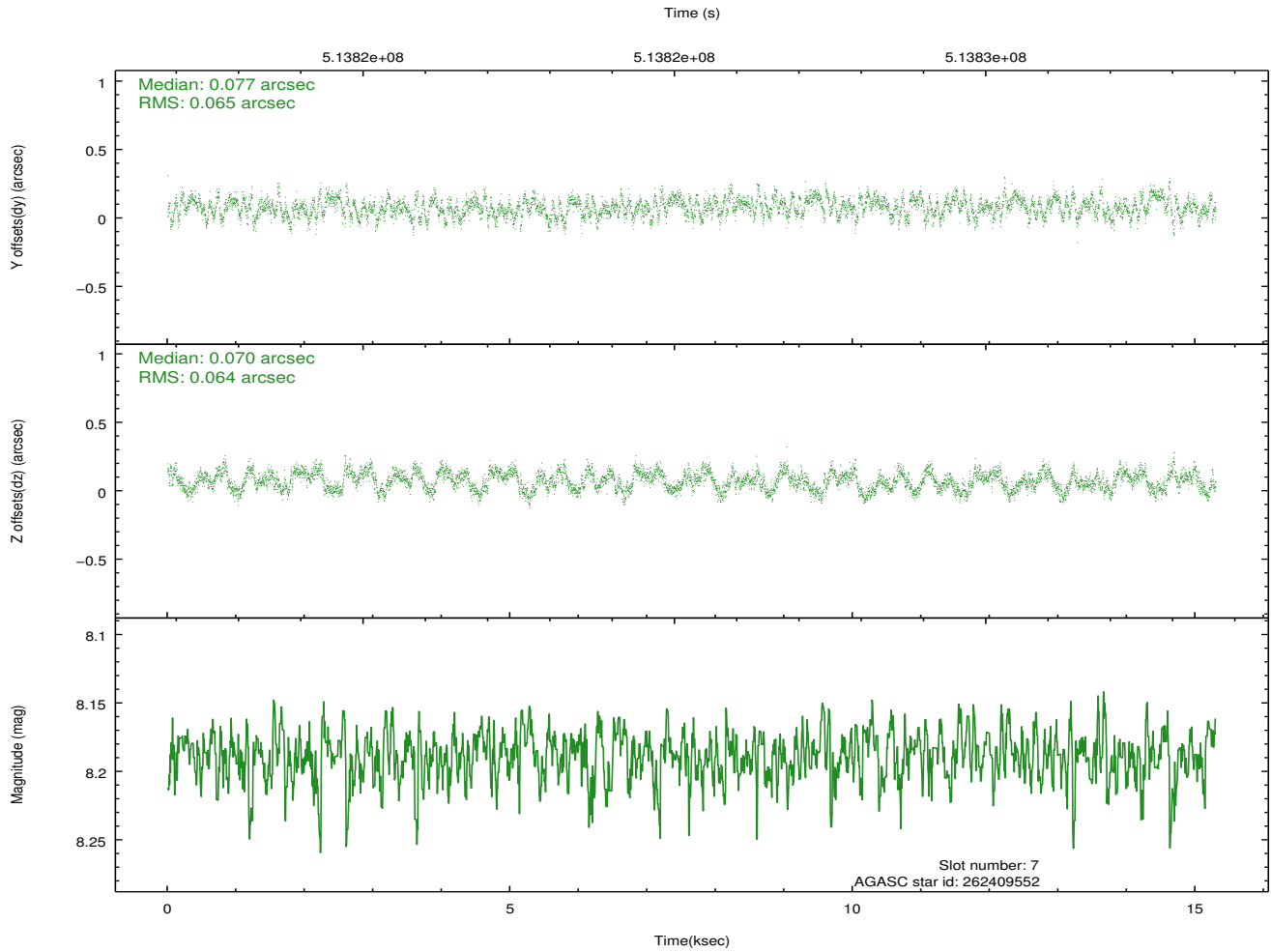
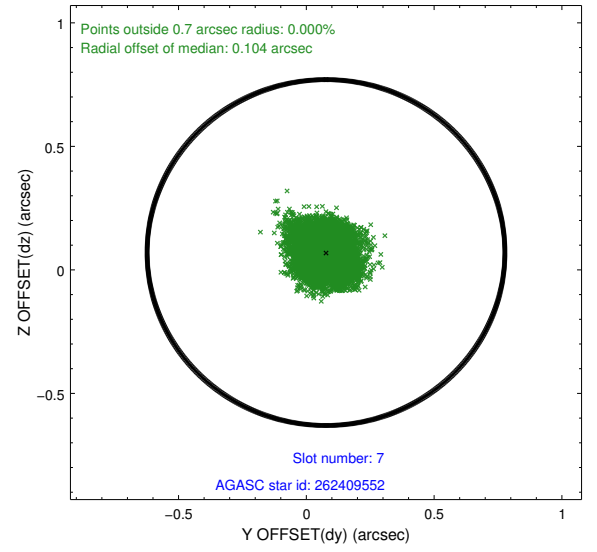
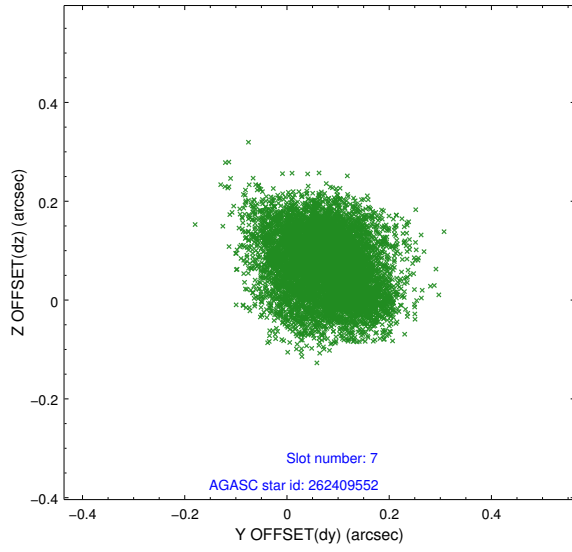
2.4.3 Slot 5



2.4.4 Slot 6

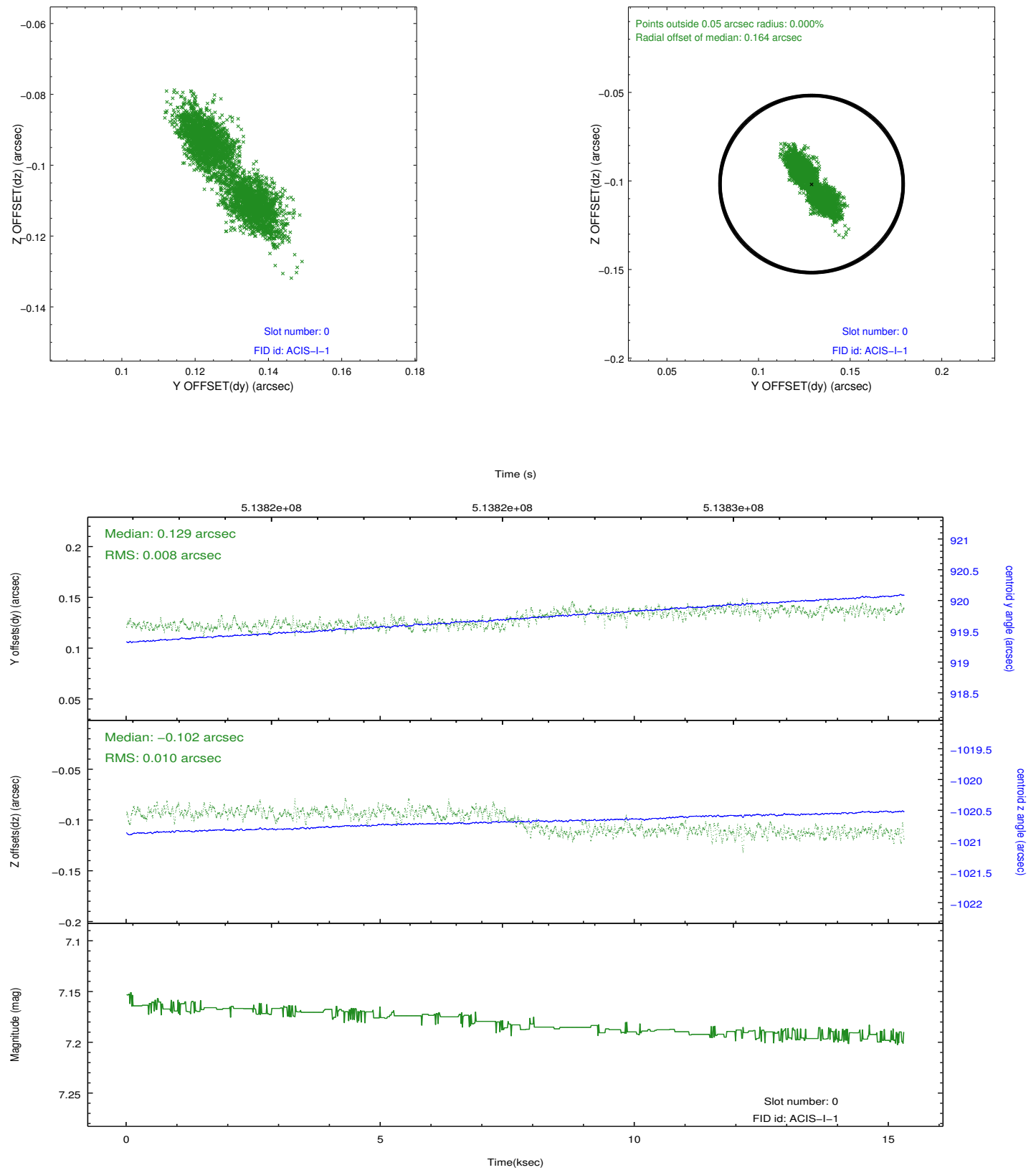


2.4.5 Slot 7

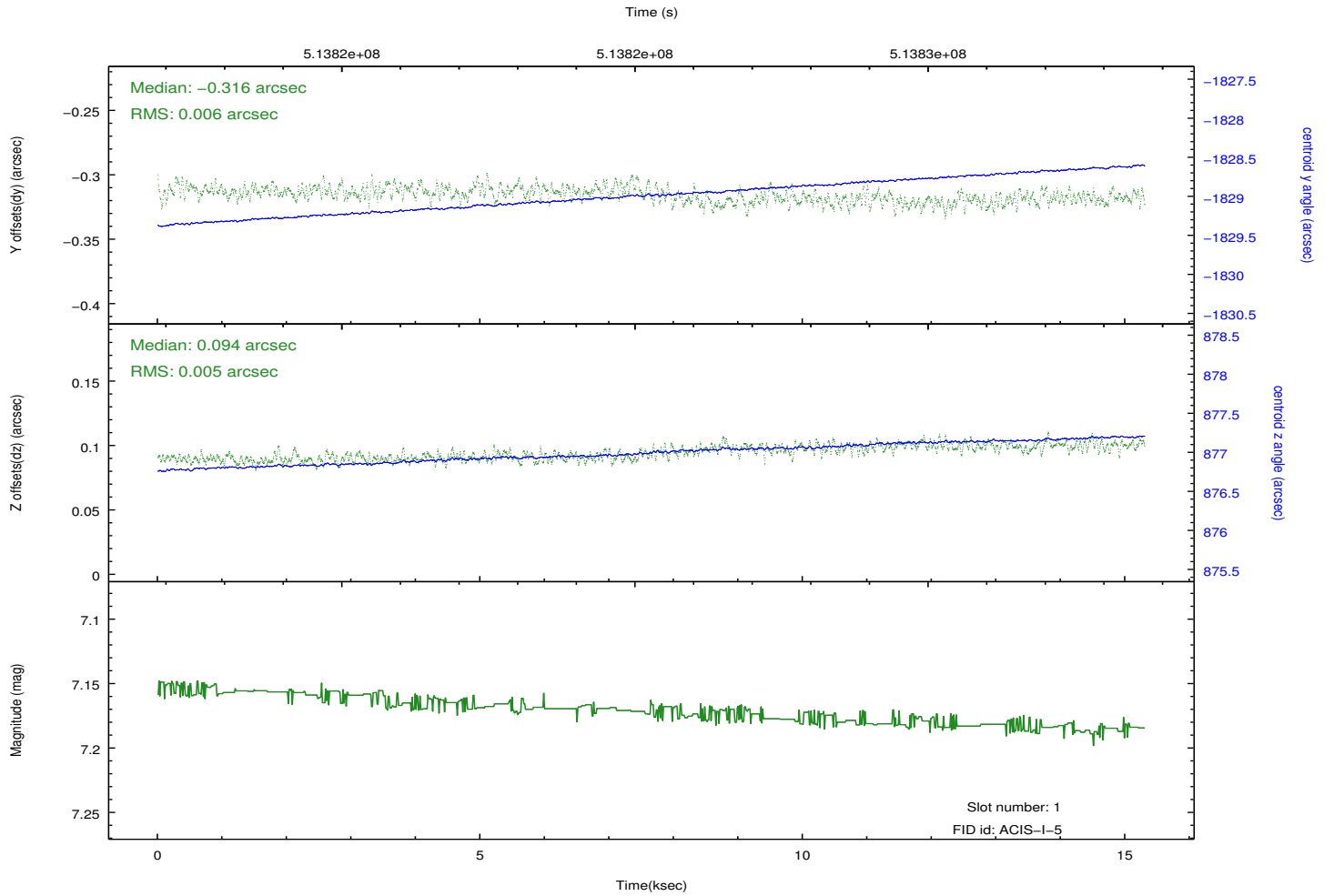
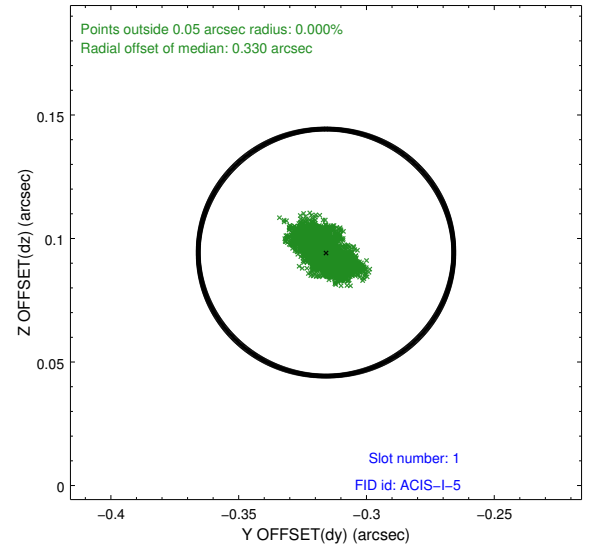
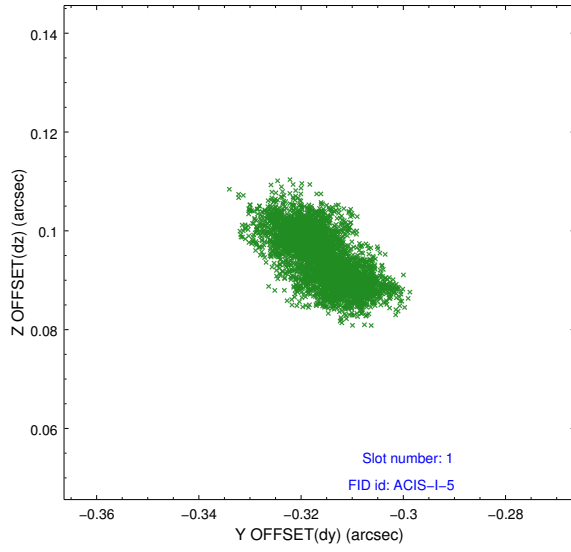


2.5 FID Slots

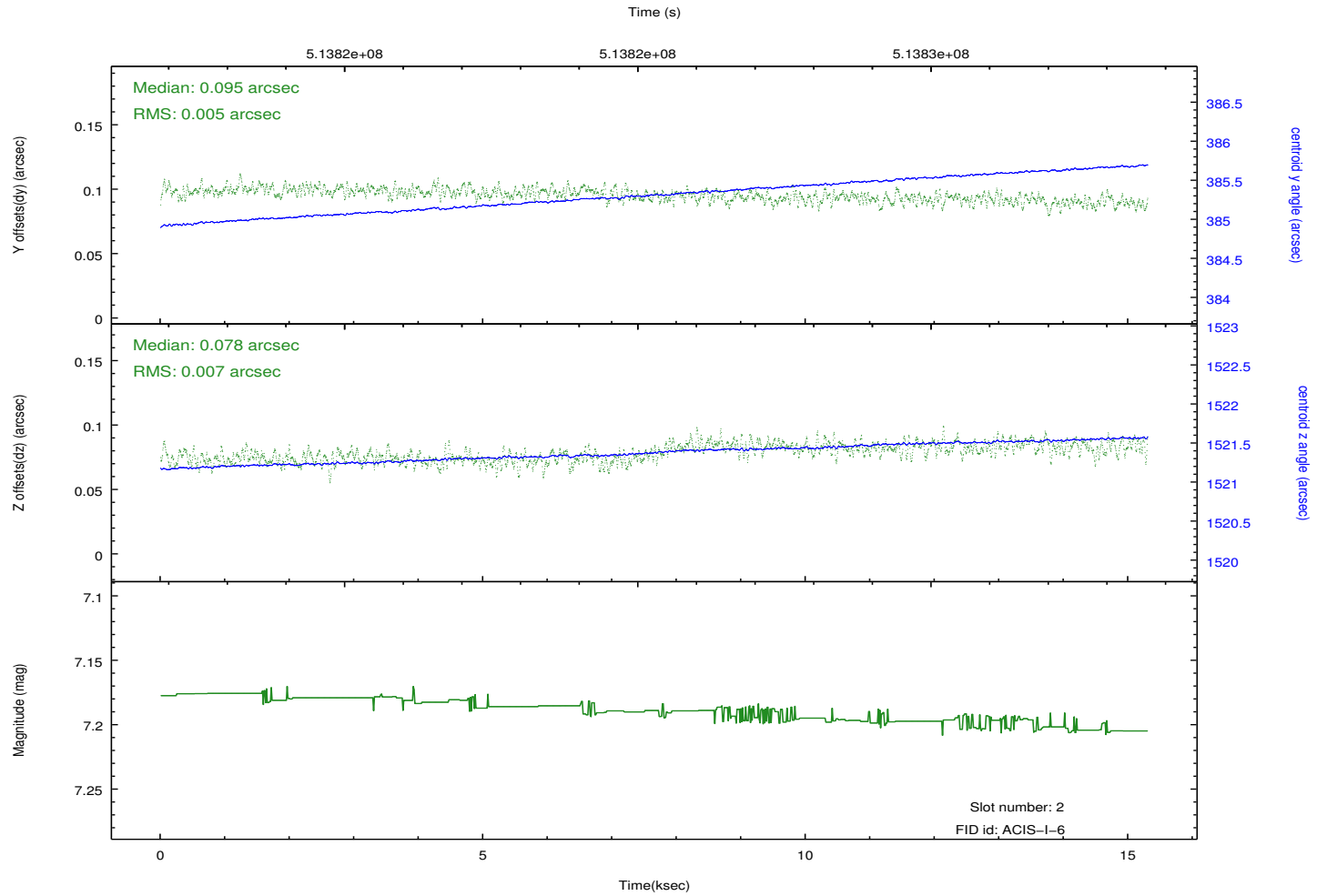
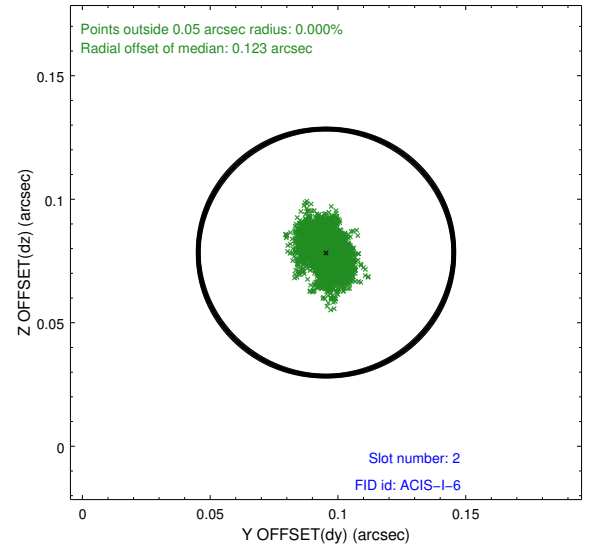
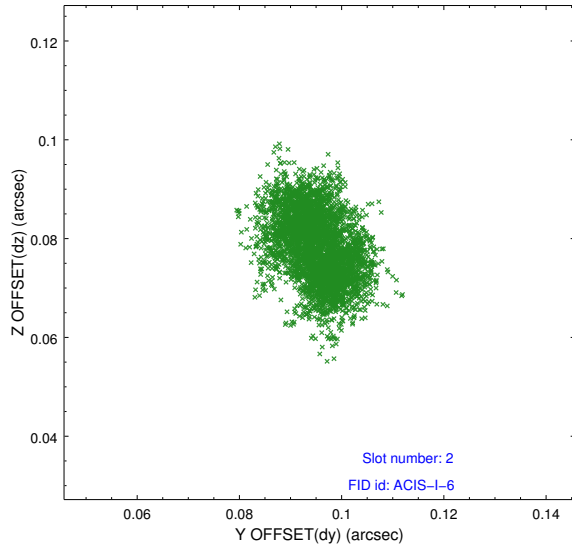
2.5.1 Slot 0



2.5.2 Slot 1



2.5.3 Slot 2



A Summary

A.1 Status

V&V Scientist	Jen Lauer
V&V Date (YYYY-MM-DD)	2014.12.18
V&V Edition	1
V&V Disposition and Status	OK
V&V Charge Time	14.890966093838

A.2 Comments

These data have been reprocessed with new aspect alignment calibration files that correct small mean offsets (up to 0.4 arcsecs) and improve overall astrometric accuracy. The new calibration was determined using data from the time period being reprocessed and was performed using cross-correlation of X-ray sources with radio and optical counterparts.