

# V&V Reference Report

## L2 ASCDS Version : 8.4.5

Observation 14264 - L2 Version 1  
Chandra X-Ray Center

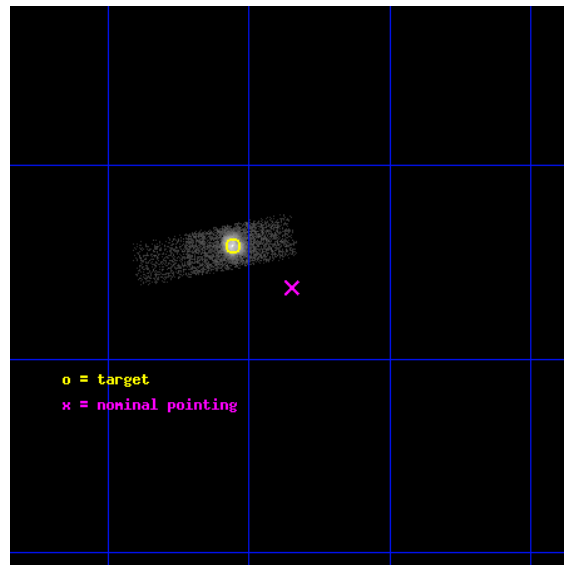
L2 Processing Date : Aug 11 2012

## Contents

<b>1</b>	<b>Front</b>	<b>2</b>
<b>2</b>	<b>OBI</b>	<b>3</b>
2.1	OBI . . . . .	3
2.1.1	Images . . . . .	3
2.1.2	Bias . . . . .	3
2.1.3	Parameters . . . . .	4
2.1.4	Events . . . . .	4
2.2	Compared Parameters . . . . .	5
2.3	Aspect . . . . .	6
2.4	Star Slots . . . . .	9
2.4.1	Slot 3 . . . . .	9
2.4.2	Slot 4 . . . . .	10
2.4.3	Slot 5 . . . . .	11
2.4.4	Slot 6 . . . . .	12
2.4.5	Slot 7 . . . . .	13
2.5	FID Slots . . . . .	14
2.5.1	Slot 0 . . . . .	14
2.5.2	Slot 1 . . . . .	15
2.5.3	Slot 2 . . . . .	16
<b>A</b>	<b>Summary</b>	<b>17</b>
A.1	Status . . . . .	17
A.2	Comments . . . . .	17

# 1 Front

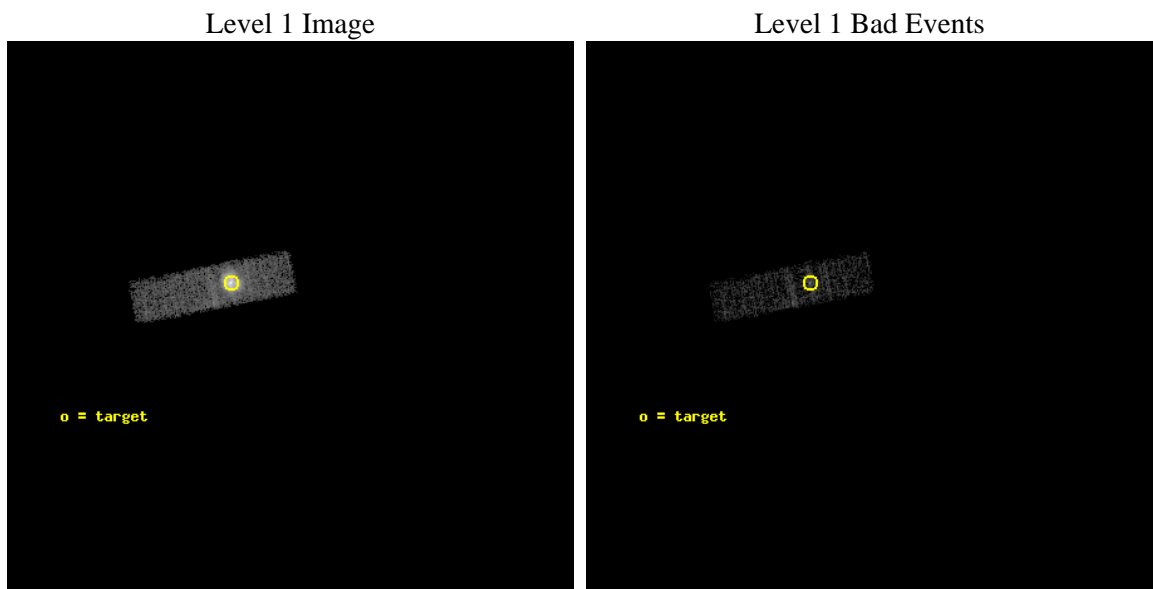
seq_num	590517	Sequence number
obs_id	14264	Observation id
title	AO-13 ACIS Calibration Observations of G21.5-09.	Proposal title
observer	Dr. CXC Calibration	Principal investigator
object	G21.5-09	Source name
dtcycle	0	&#160
cycle	P	events from which exps? Prim/Second/Both
ra_targ	278.389583	Observer's specified target RA [deg]
dec_targ	-10.568528	Observer's specified target Dec [deg]
ra_nom	278.33719860705	Nominal RA [deg]
dec_nom	-10.605248655087	Nominal Dec [deg]
roll_nom	259.01175019579	Nominal Roll [deg]
revision	1	Processing version of data
ontime	10062.075433552	Sum of GTIs [s]
livetime	9571.079076907	Livetime [s]
ontime3	10062.075433552	Sum of GTIs [s]
l2events	26562	Number of level 2 events



## 2 OBI

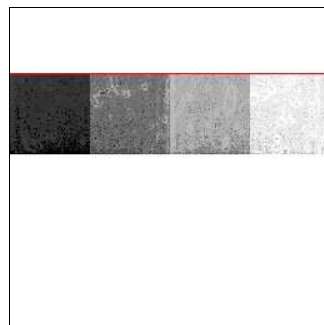
### 2.1 OBI

#### 2.1.1 Images



#### 2.1.2 Bias

Chip 3



### 2.1.3 Parameters

obi_num	1	Obi number	sched_exp_time	10000.000000	[s] Scheduled observation exposure time
ascdsver	8.4.5	Processing system revision	ontime	10062.075433552	Sum of GTIs [s]
caldsver	4.5.1.1	&#160	ontime3	10062.075433552	Sum of GTIs [s]
date	2012-08-11T17:06:00	Date and time of file creation	l1events	41194	Number of level 1 events
revision	1	Processing version of data			

### 2.1.4 Events

	<b>ccd 3</b>
level 1 events	41194
rejected events	12816
rejected %	31%

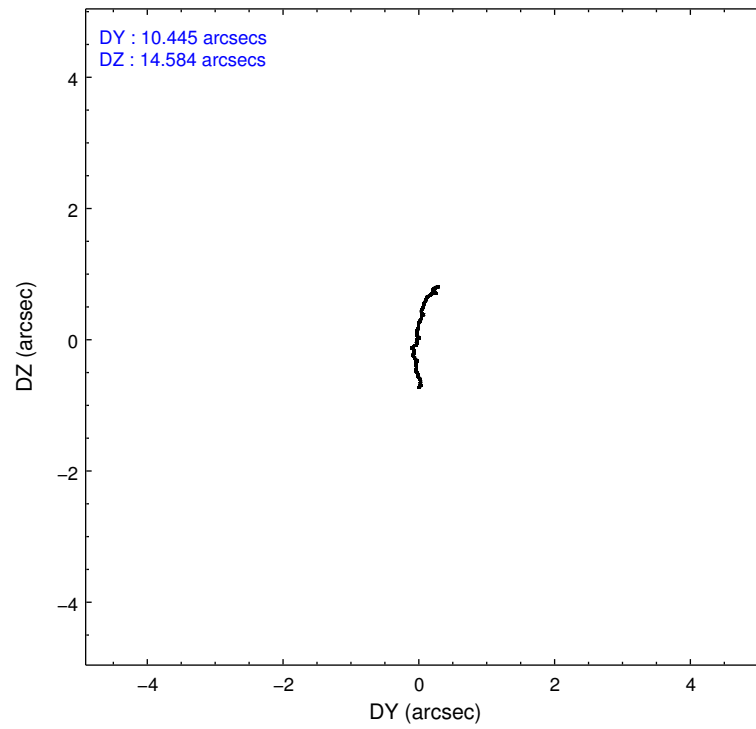
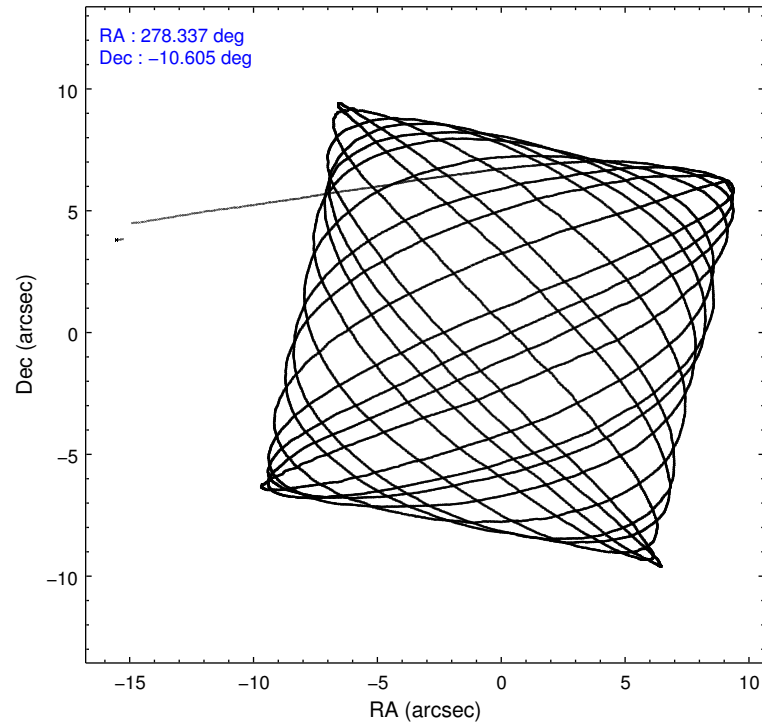
	<b>ccd 3</b>
grade 0 events	20617
	50%
grade 1 events	72
	0%
grade 2 events	3661
	8%
grade 3 events	1315
	3%
grade 4 events	1348
	3%
grade 5 events	643
	1%
grade 6 events	1443
	3%
grade 7 events	12095
	29%

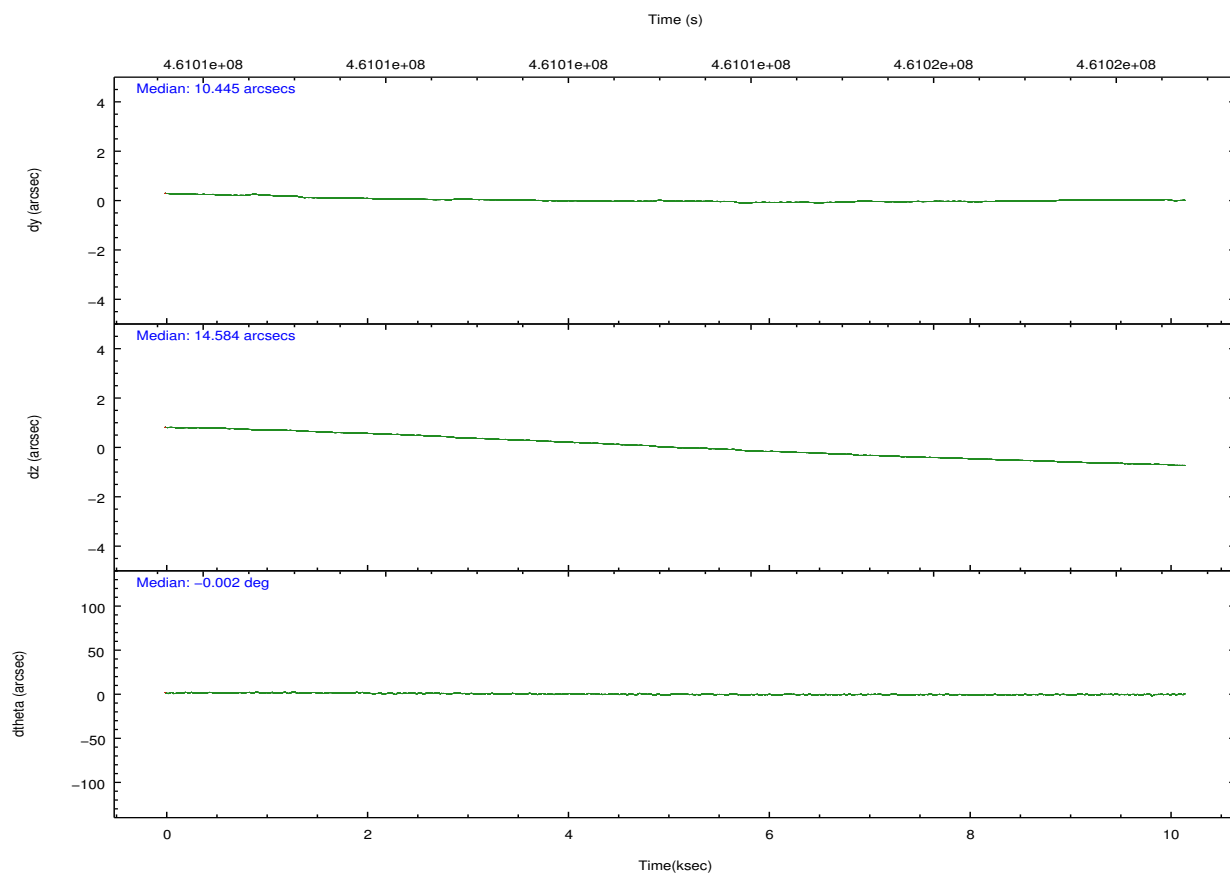
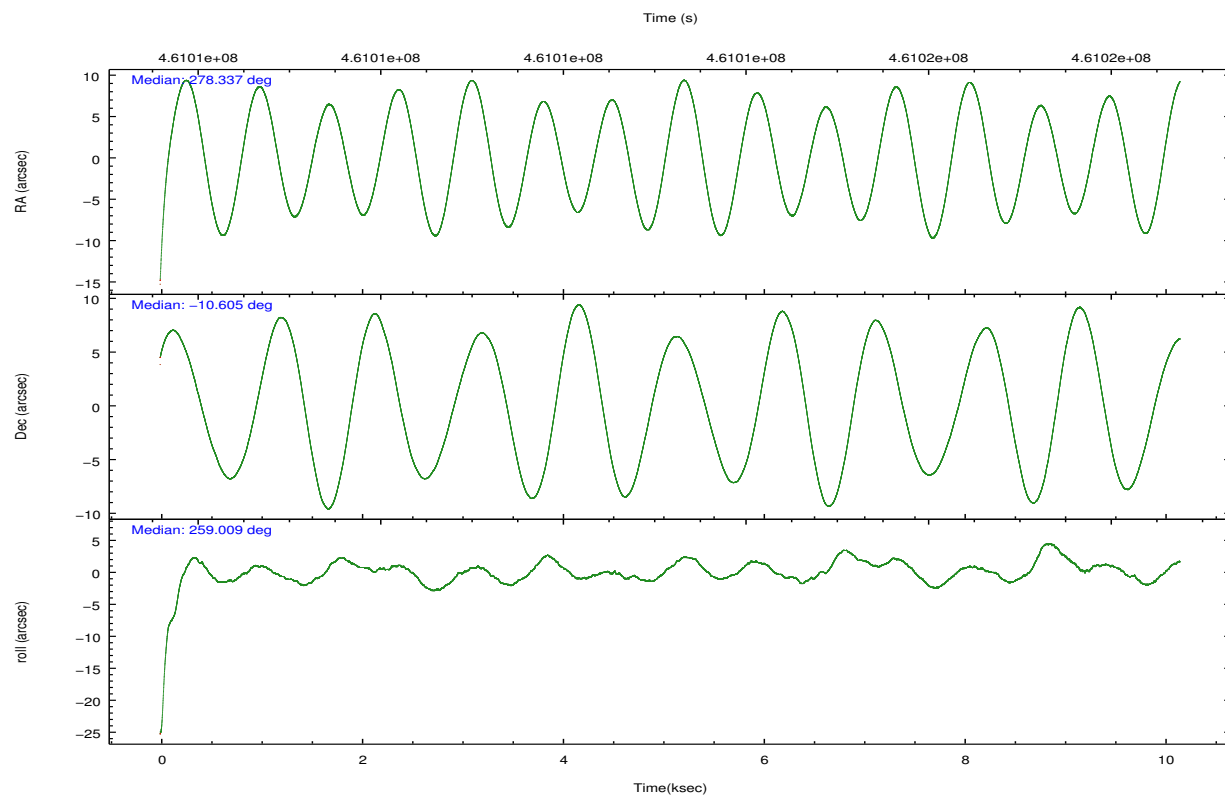


## 2.2 Compared Parameters

Parameter	Planned	Actual	Parameter	Planned	Actual
Instrument	ACIS	ACIS	Obspar format version number	7	7
Detector	ACIS-3	ACIS-3	Obspar file type	PREDICTED	ACTUAL
Grating	NONE	NONE	Obspar update status	NONE	UPDATED
Data mode	VFAINT	VFAINT	Number of optional ACIS chips dropped	0	0
Observation mode	POINTING	POINTING	On-chip summing requested	N	N
[deg] Pointing RA	278.327961	278.3371986070453	Subarray requested	CUSTOM	1/4
[deg] Pointing Dec	-10.579303	-10.60524865508722	Subarray start row	560	560
[deg] Pointing Roll	258.801377	259.0117501957902	Subarray row count	256	256
[mm] SIM focus pos	-0.782348	-0.7809083437167272	Alternating exposures requested	N	N
[mm] SIM defocus	0	0.001439871863259334	[s] Primary exposure time	0.000000	0.8
[mm] SIM translation stage pos	-233.592463	-233.5874344608287			
[mm] SIM translation stage offset	0	-0.005018542100998502			
[s] Observation start time (MET)	461008235.184000	461007038.18916			
Observation start date	2012-08-10T17:49:28	2012-08-10T17:30:38			
[s] Observation end time (MET)	461018235.184000	461018436.70227			
Observation end date	2012-08-10T20:36:08	2012-08-10T20:40:36			
Read mode	TIMED	TIMED			

## 2.3 Aspect



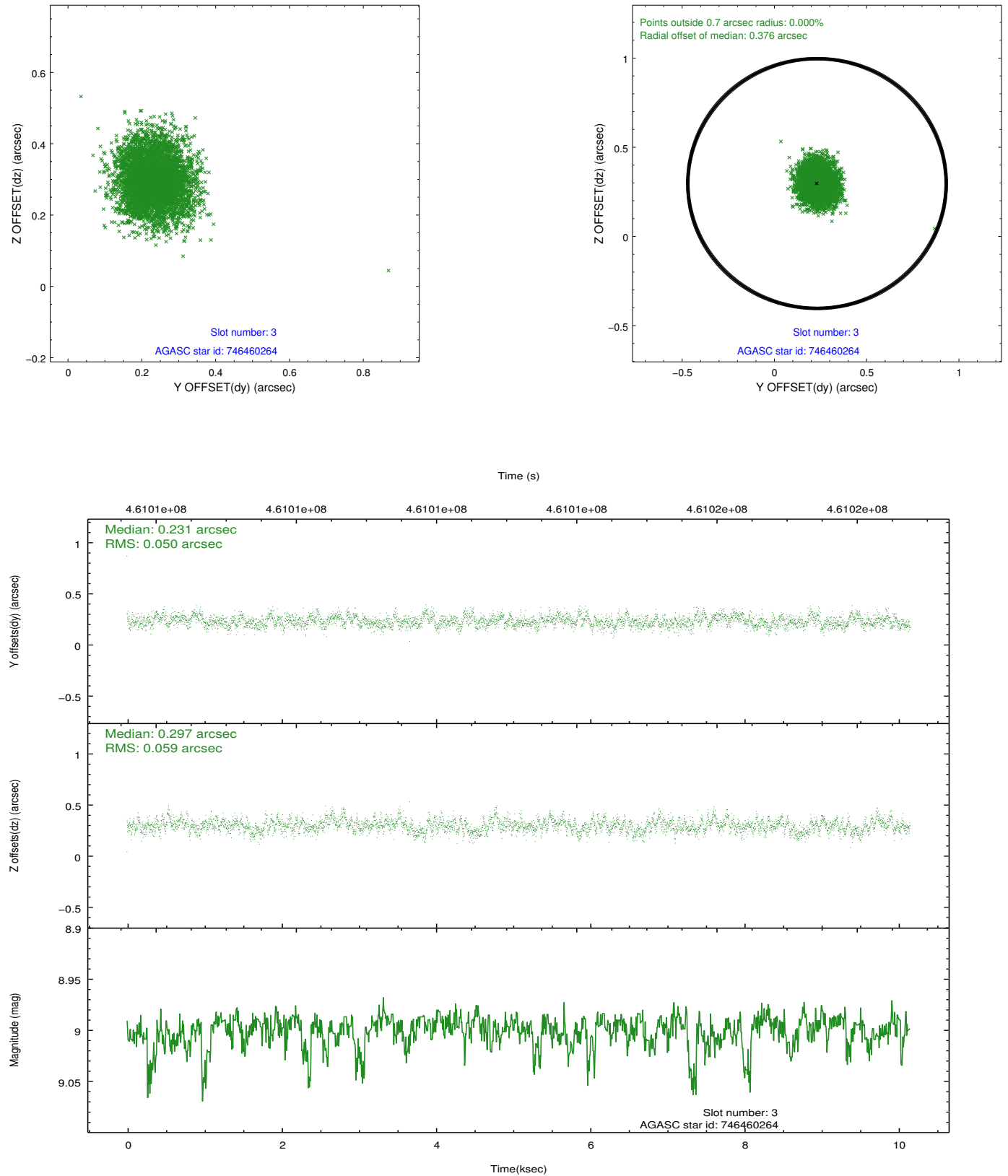


### Slot Statistics

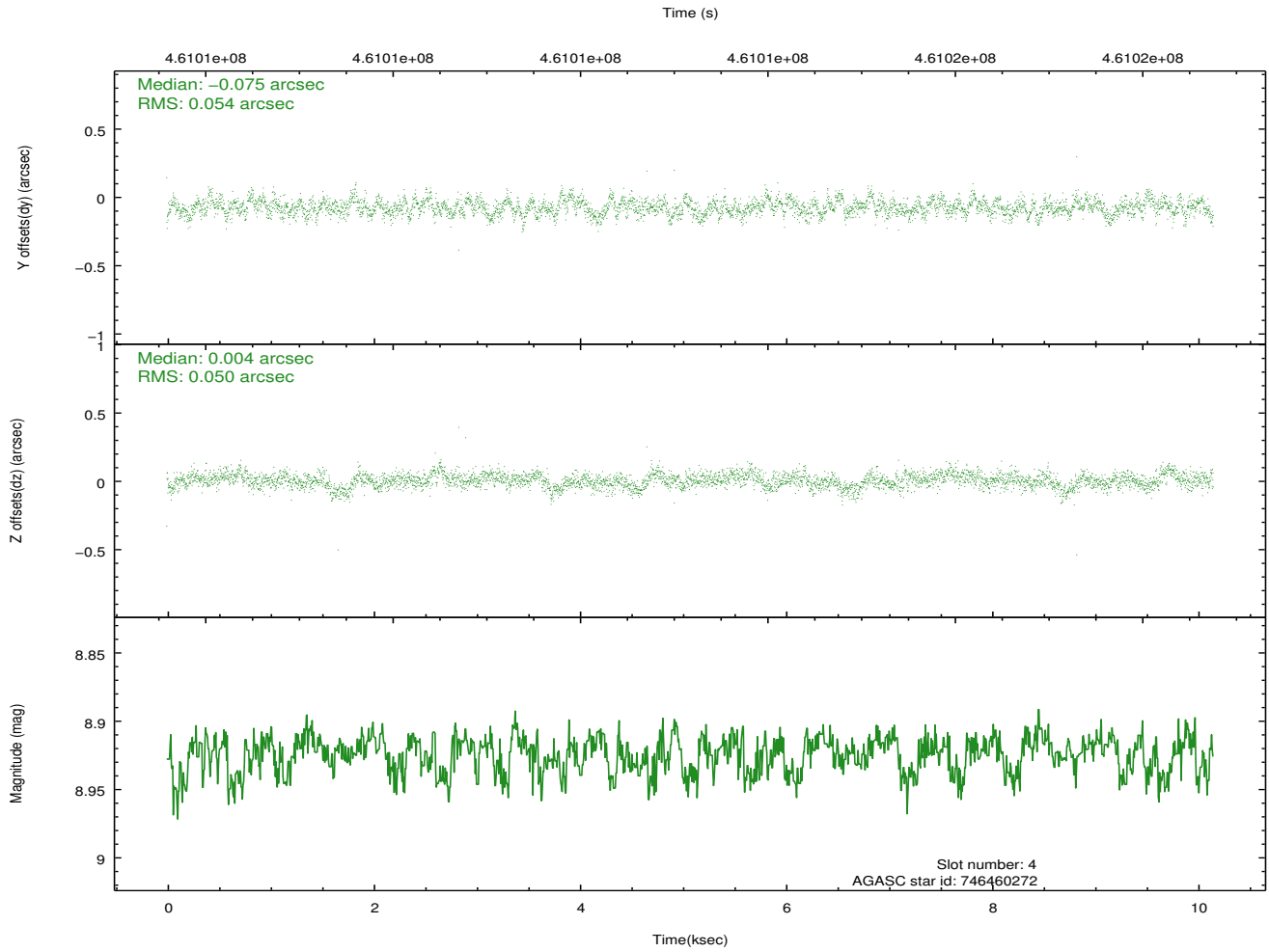
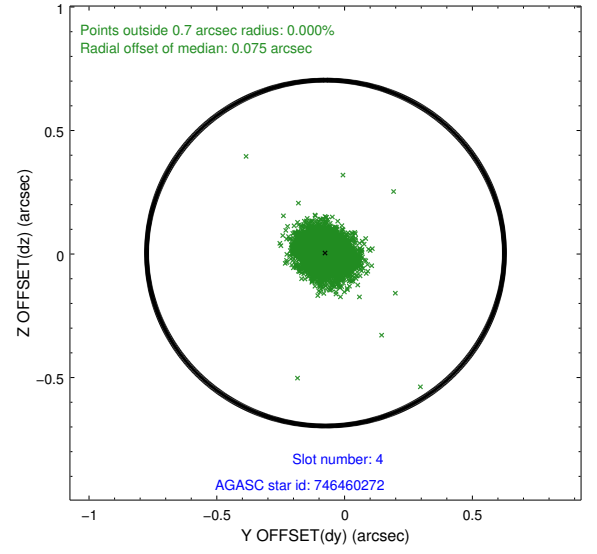
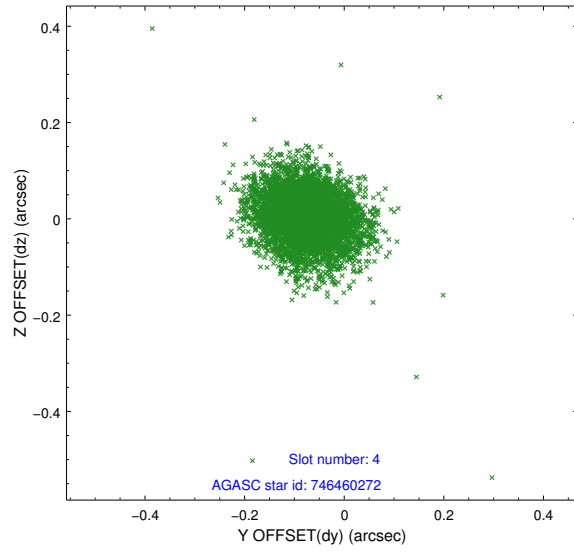
slot	status	id	mag	n_pts	med_dy	med_dz	dr1	dr2	ra	dec	mean_y	mean_z
0	FID	ACIS-I-1	7.05	2477	0.048	-0.002	0.017	0.029	0.000000	0.000000	929.16	-838.21
1	FID	ACIS-I-5	7.03	2477	-0.185	0.063	0.007	0.012	0.000000	0.000000	-1818.90	1059.07
2	FID	ACIS-I-6	7.03	2477	0.047	0.011	0.019	0.028	0.000000	0.000000	394.13	1704.12
3	GUIDE	746460264	9.00	4949	0.231	0.297	0.082	0.135	278.096404	-9.919432	-2170.10	-1266.53
4	GUIDE	746460272	8.92	4951	-0.075	0.004	0.077	0.126	278.847488	-10.152127	-1865.07	1507.45
5	GUIDE	746461728	9.77	4948	-0.023	-0.142	0.142	0.230	278.986921	-10.530755	-622.36	2254.71
6	GUIDE	746462456	8.39	4948	0.056	0.000	0.064	0.106	278.652171	-10.530173	-394.14	1092.70
7	GUIDE	746462680	8.98	4947	-0.194	-0.161	0.095	0.153	278.660755	-10.782756	490.37	1297.11

## 2.4 Star Slots

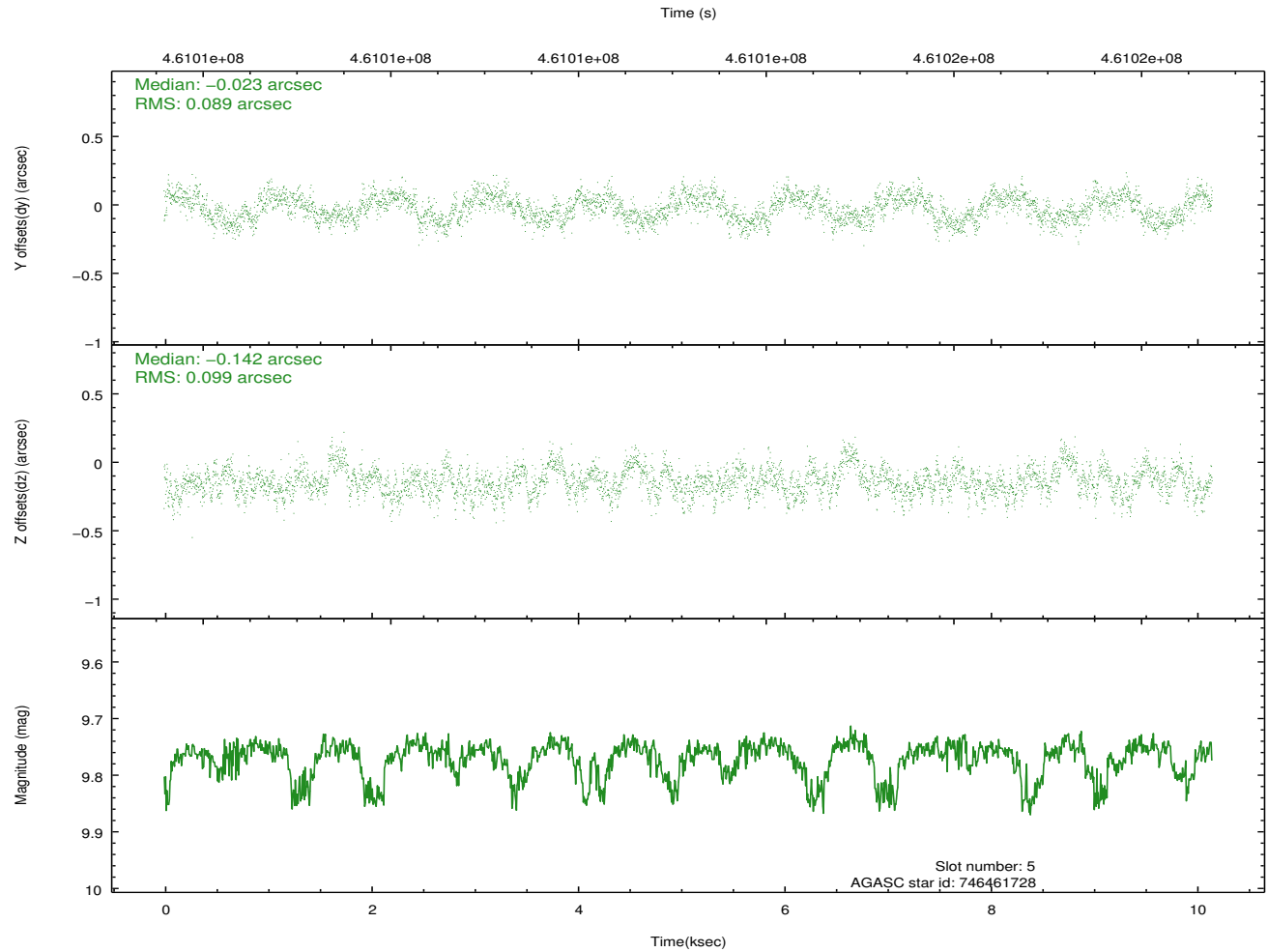
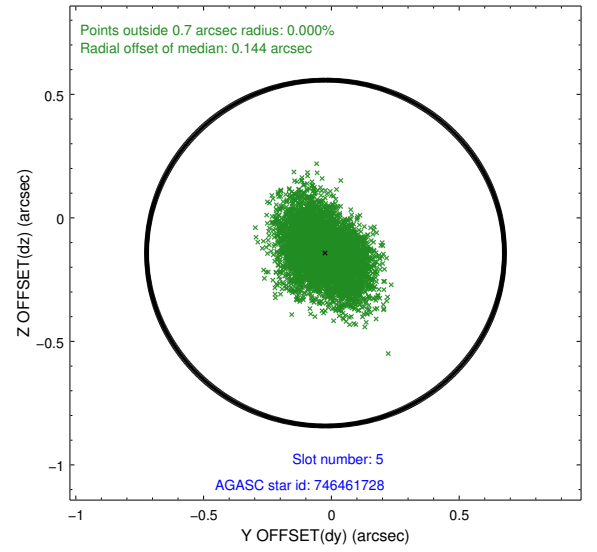
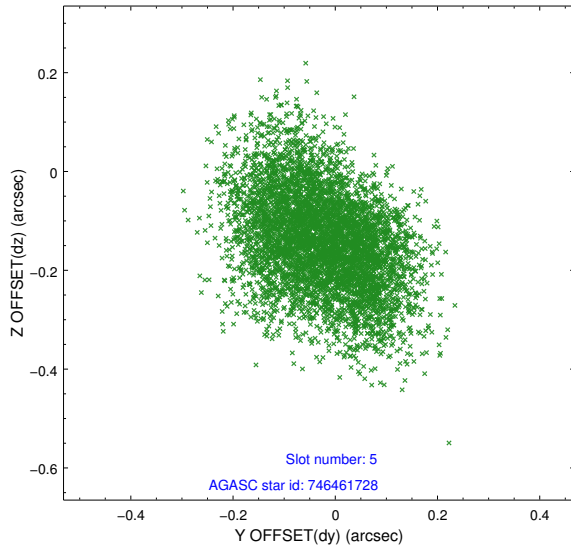
### 2.4.1 Slot 3



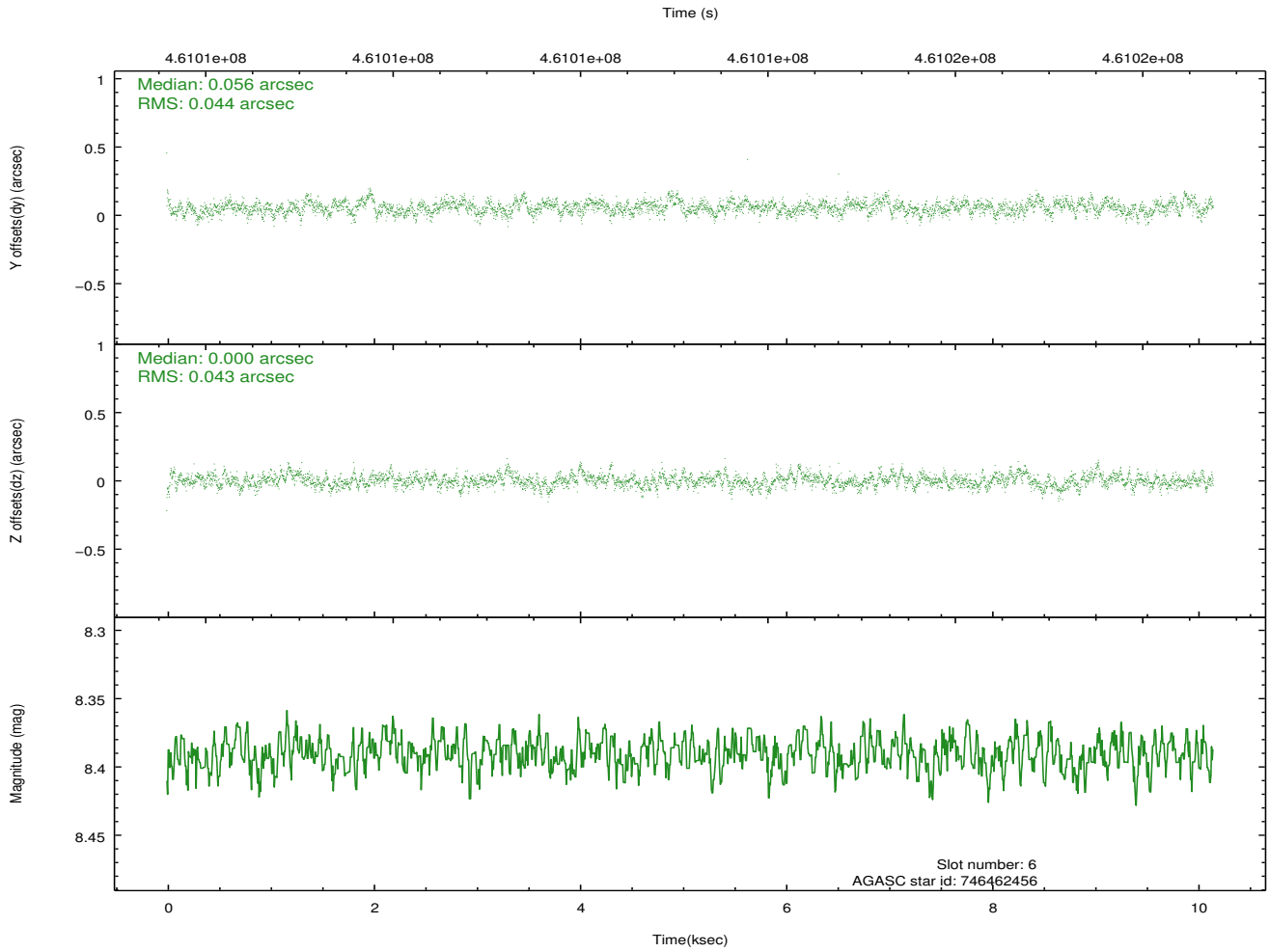
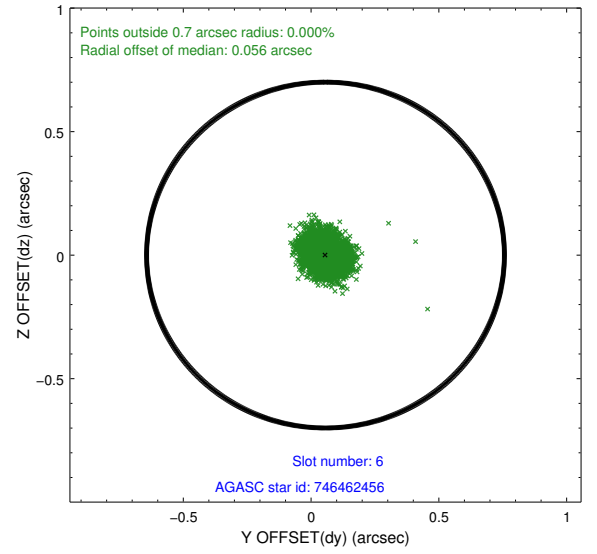
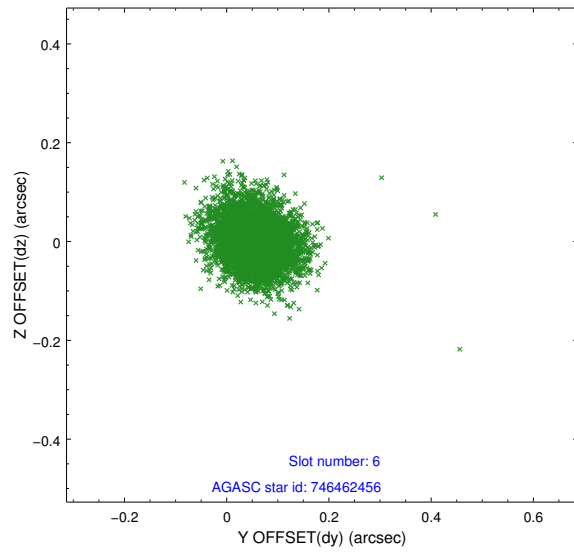
## 2.4.2 Slot 4



### 2.4.3 Slot 5

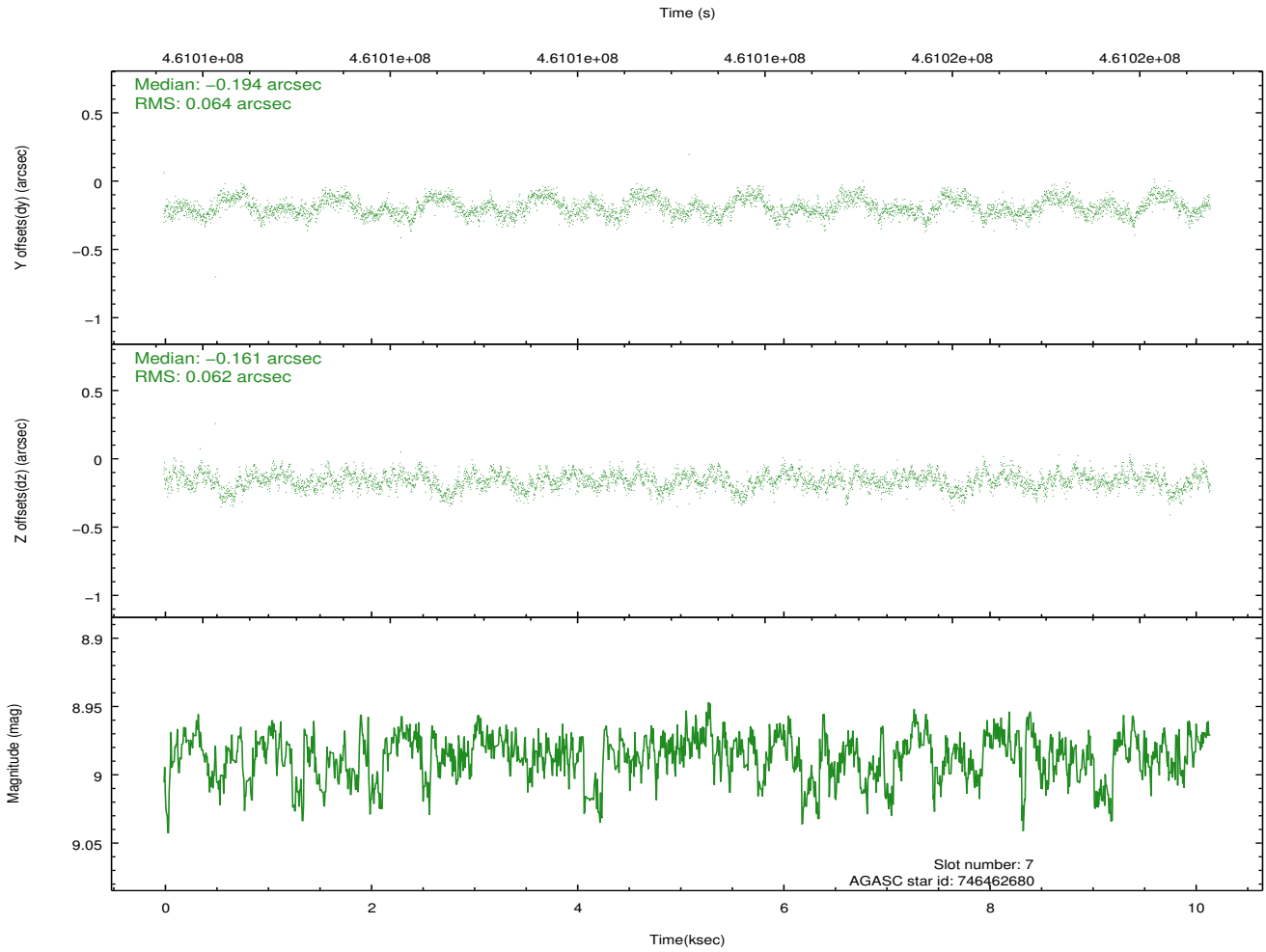
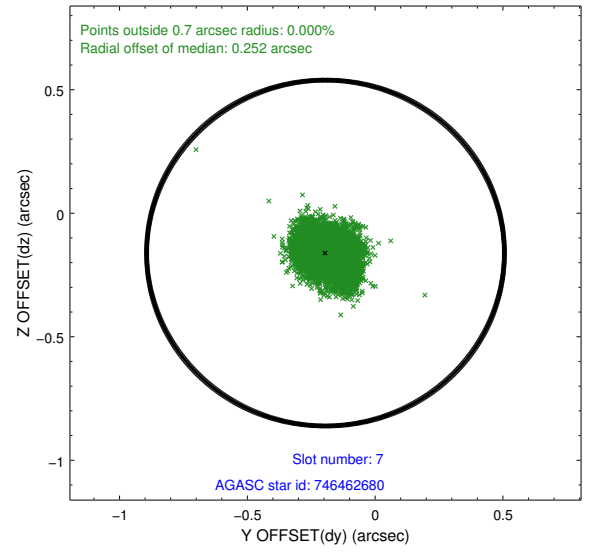
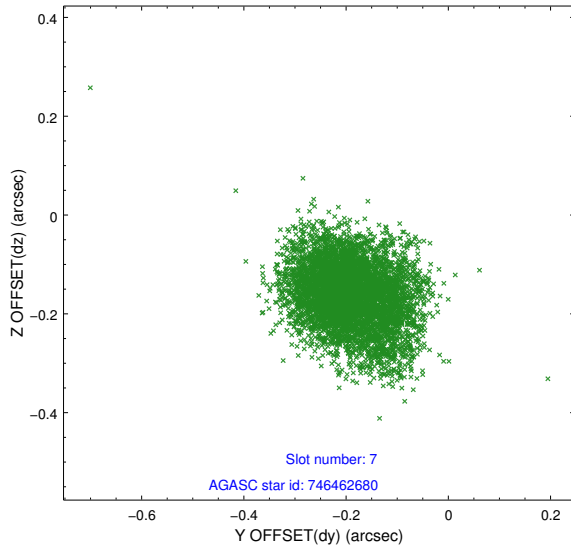


## 2.4.4 Slot 6



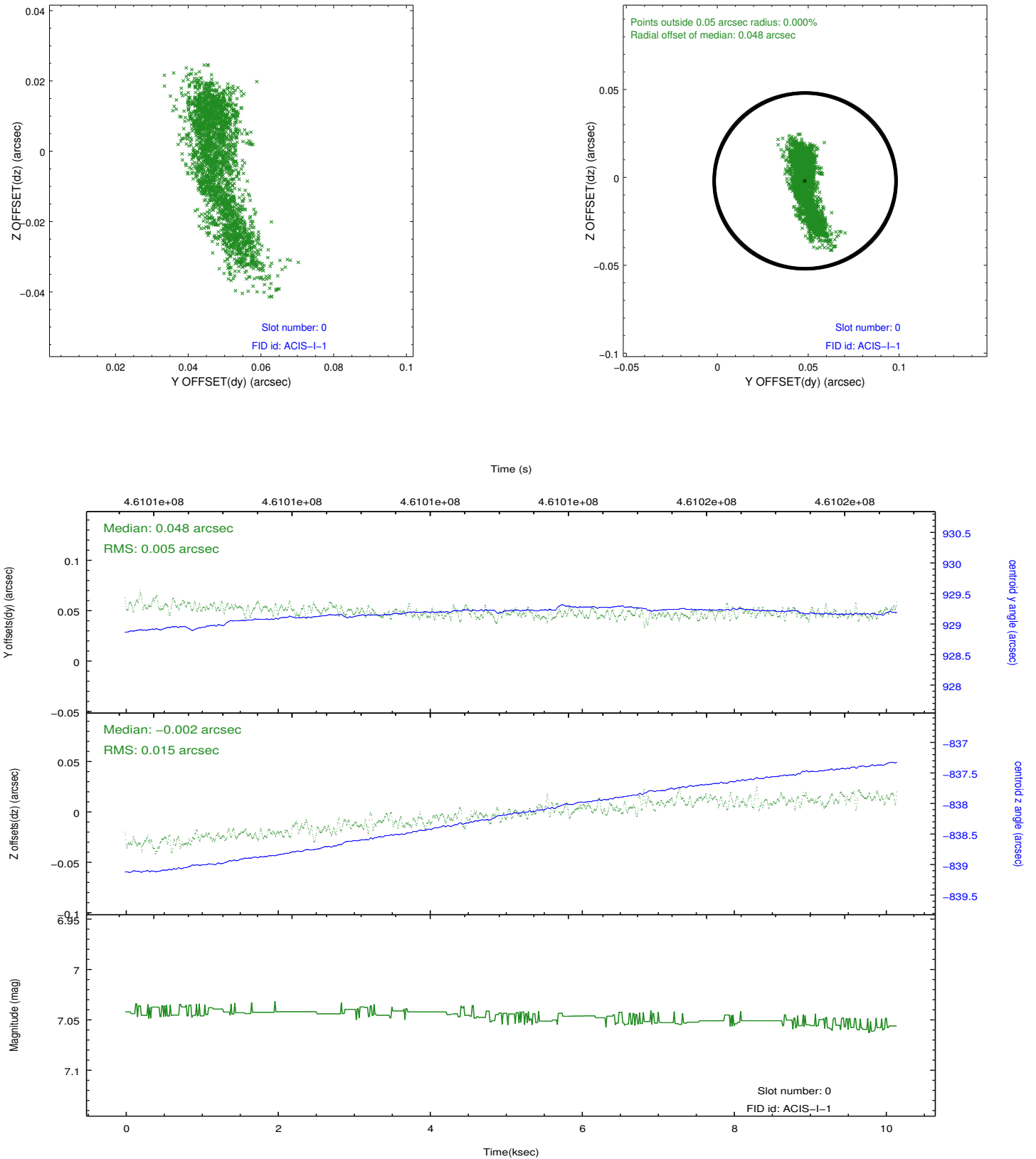


## 2.4.5 Slot 7

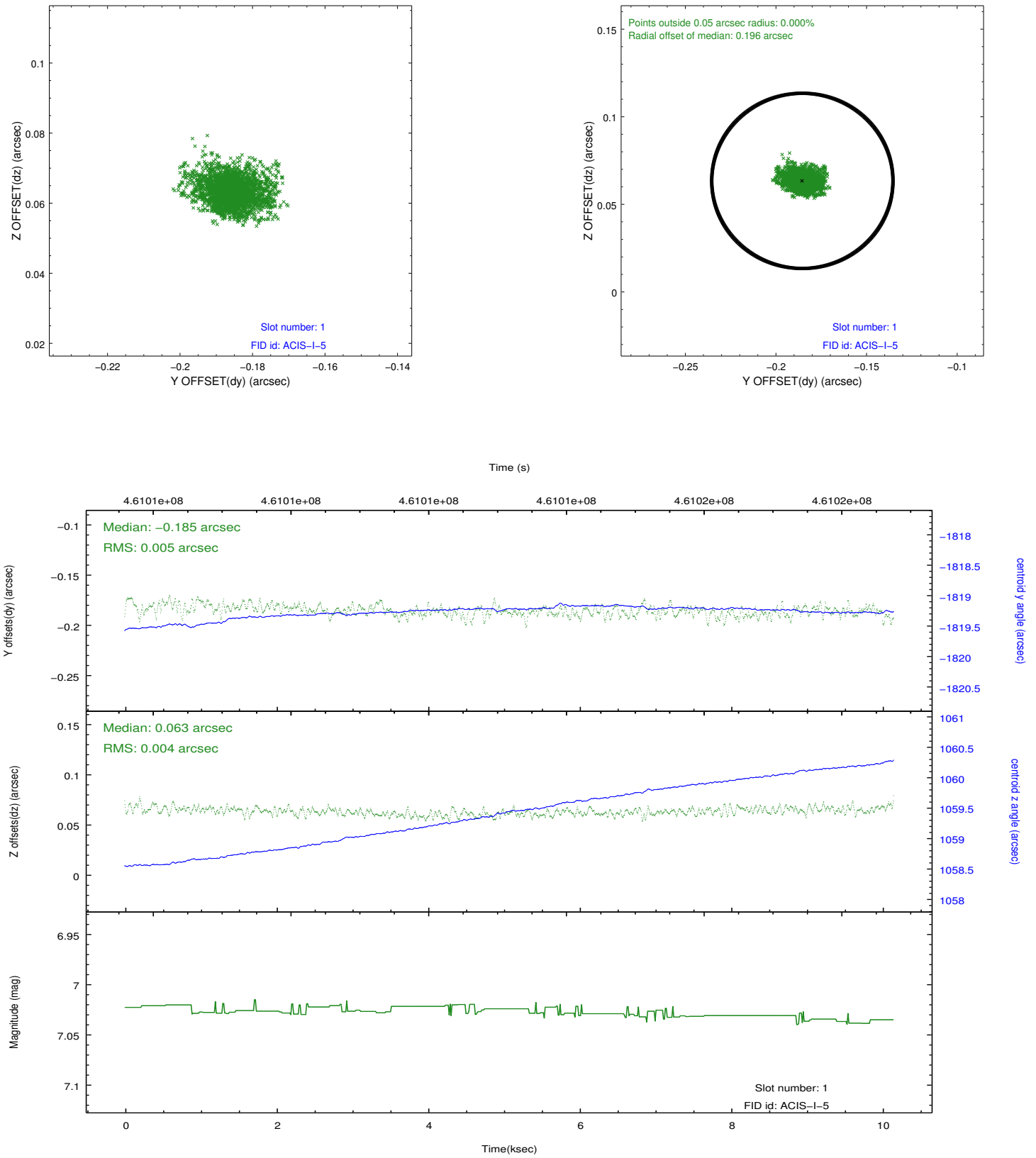


## 2.5 FID Slots

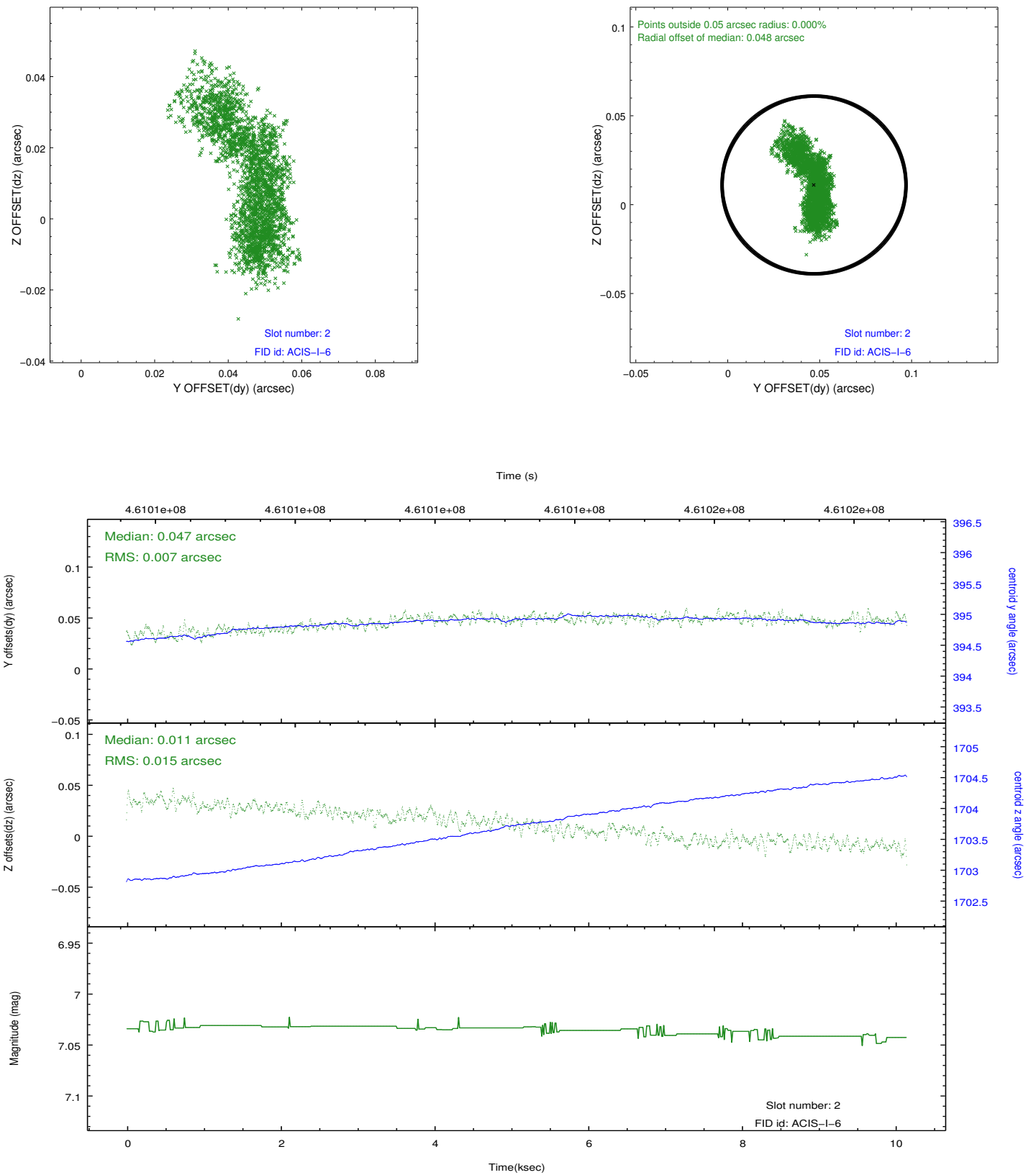
### 2.5.1 Slot 0



## 2.5.2 Slot 1



### 2.5.3 Slot 2



## A Summary

### A.1 Status

V&V Scientist	Jen Lauer
V&V Date (YYYY-MM-DD)	2012.08.12
V&V Edition	1
V&V Disposition and Status	OK
V&V Charge Time	10.062075433552

### A.2 Comments