

V&V Reference Report

L2 ASCDS Version : 8.4.3

Observation 13197 - L2 Version 2
Chandra X-Ray Center

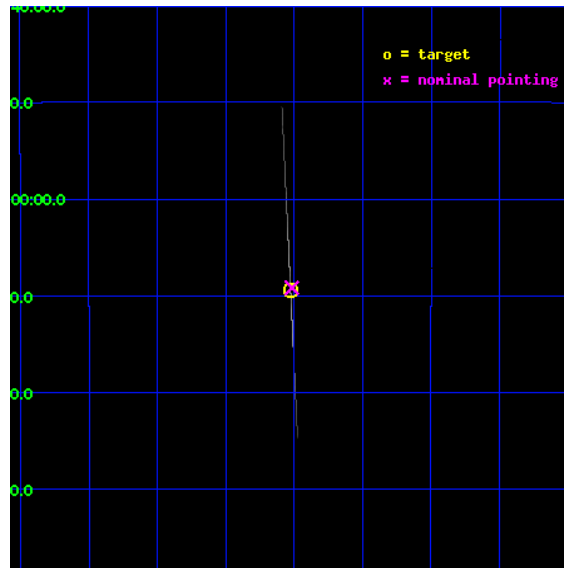
L2 Processing Date : Feb 4 2012

Contents

1	Front	2
2	OBI	3
2.1	OBI	3
2.1.1	Images	3
2.1.2	Parameters	4
2.1.3	Events	4
2.2	Compared Parameters	5
2.3	Aspect	6
2.4	Star Slots	9
2.4.1	Slot 3	9
2.4.2	Slot 4	10
2.4.3	Slot 5	11
2.4.4	Slot 6	12
2.4.5	Slot 7	13
2.5	FID Slots	14
2.5.1	Slot 0	14
2.5.2	Slot 1	15
2.5.3	Slot 2	16
3	Gratings	17
3.1	HEG Arm	17
3.2	MEG Arm	19
A	Summary	21
A.1	Status	21
A.2	Comments	21

1 Front

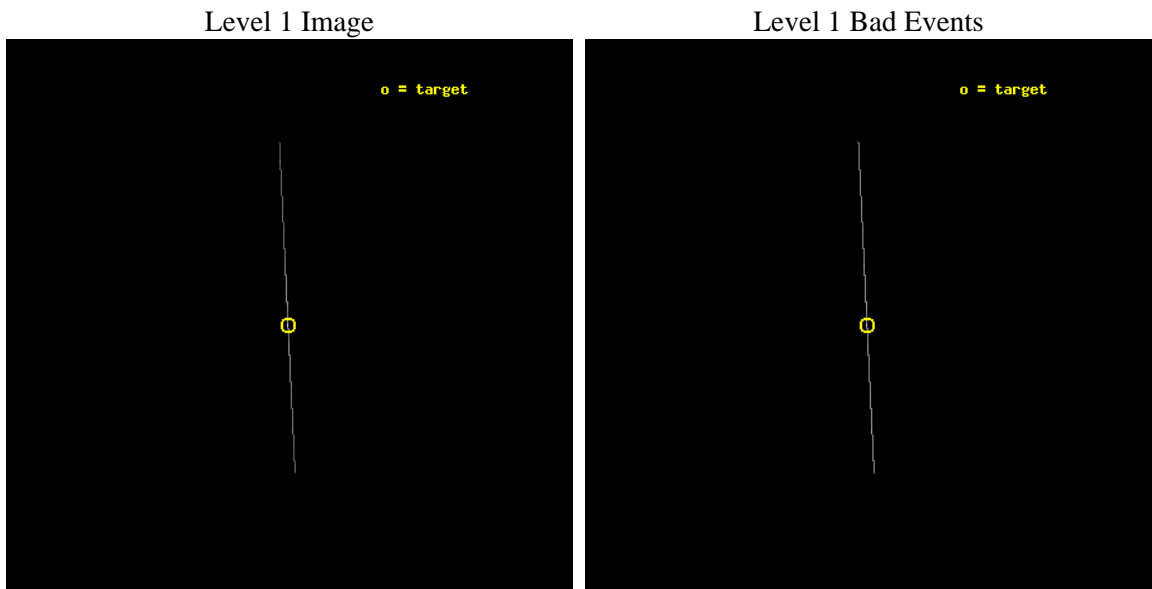
seq_num	490021	Sequence number
obs_id	13197	Observation id
title	AO-12 Calibration Observations of GX 13+1 and RXJ 1856.5-3754	Prop
observer	Dr. CXC Calibration	Principal investigator
object	GX 13+1	Source name
ra_targ	273.631667	Observer's specified target RA [deg]
dec_targ	-17.157417	Observer's specified target Dec [deg]
ra_nom	273.62917356298	Nominal RA [deg]
dec_nom	-17.153138339067	Nominal Dec [deg]
roll_nom	87.226492524874	Nominal Roll [deg]
revision	2	Processing version of data
ontime	10129.75	Sum of GTIs [s]
livetime	10090.180664062	Livetime [s]
ontime5	10129.75	Sum of GTIs [s]
ontime6	10129.75	Sum of GTIs [s]
ontime7	10129.75	Sum of GTIs [s]
ontime8	10129.75	Sum of GTIs [s]
l2events	1616117	Number of level 2 events



2 OBI

2.1 OBI

2.1.1 Images



2.1.2 Parameters

obi_num	0	Obi number	sched_exp_time	10000.000000	[s] Scheduled observation exposure time
ascdsver	8.4.3	Processing system revision	ontime	10129.75	Sum of GTIs [s]
caldsver	4.4.7	 	ontime5	10129.75	Sum of GTIs [s]
date	2012-02-04T06:31:15	Date and time of file creation	ontime6	10129.75	Sum of GTIs [s]
revision	2	Processing version of data	ontime7	10129.75	Sum of GTIs [s]
			ontime8	10129.75	Sum of GTIs [s]
			l1events	2408070	Number of level 1 events

2.1.3 Events

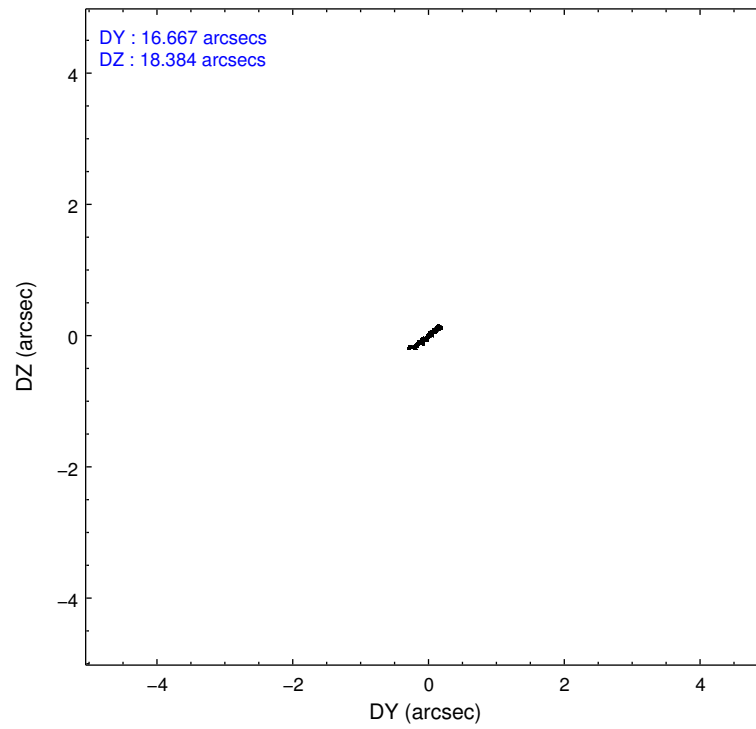
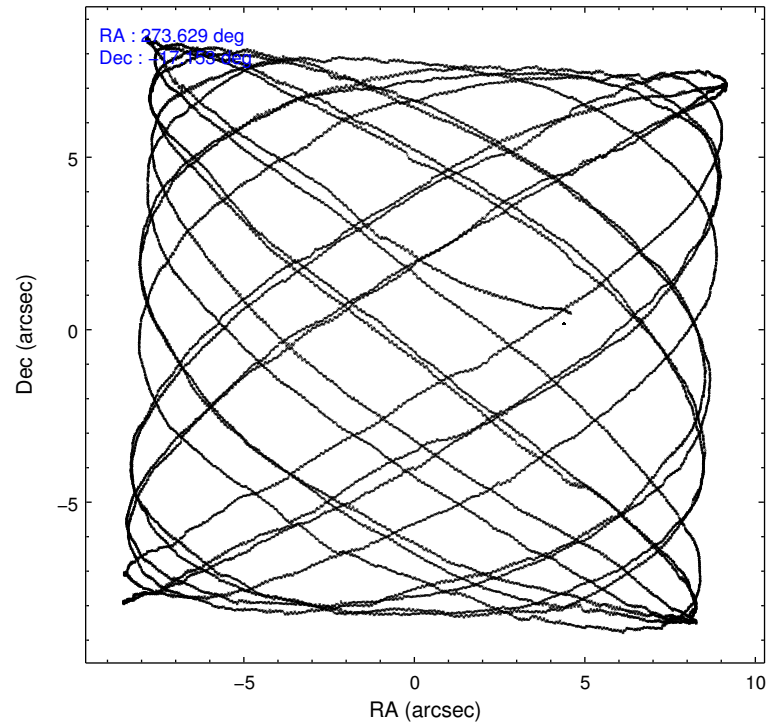
	ccd 5	ccd 6	ccd 7	ccd 8
level 1 events	189312	540051	1391183	287524
rejected events	89535	147049	297090	170794
rejected %	47%	27%	21%	59%

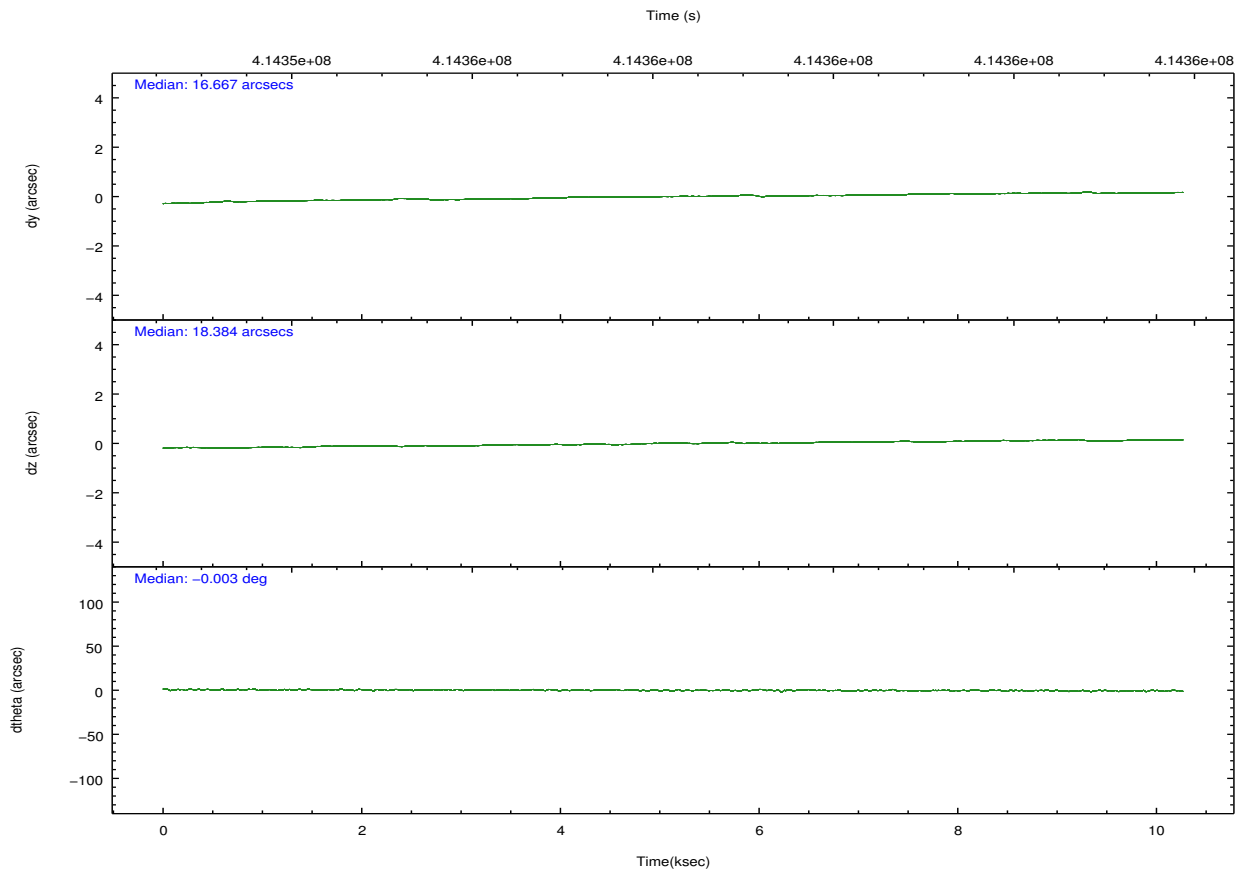
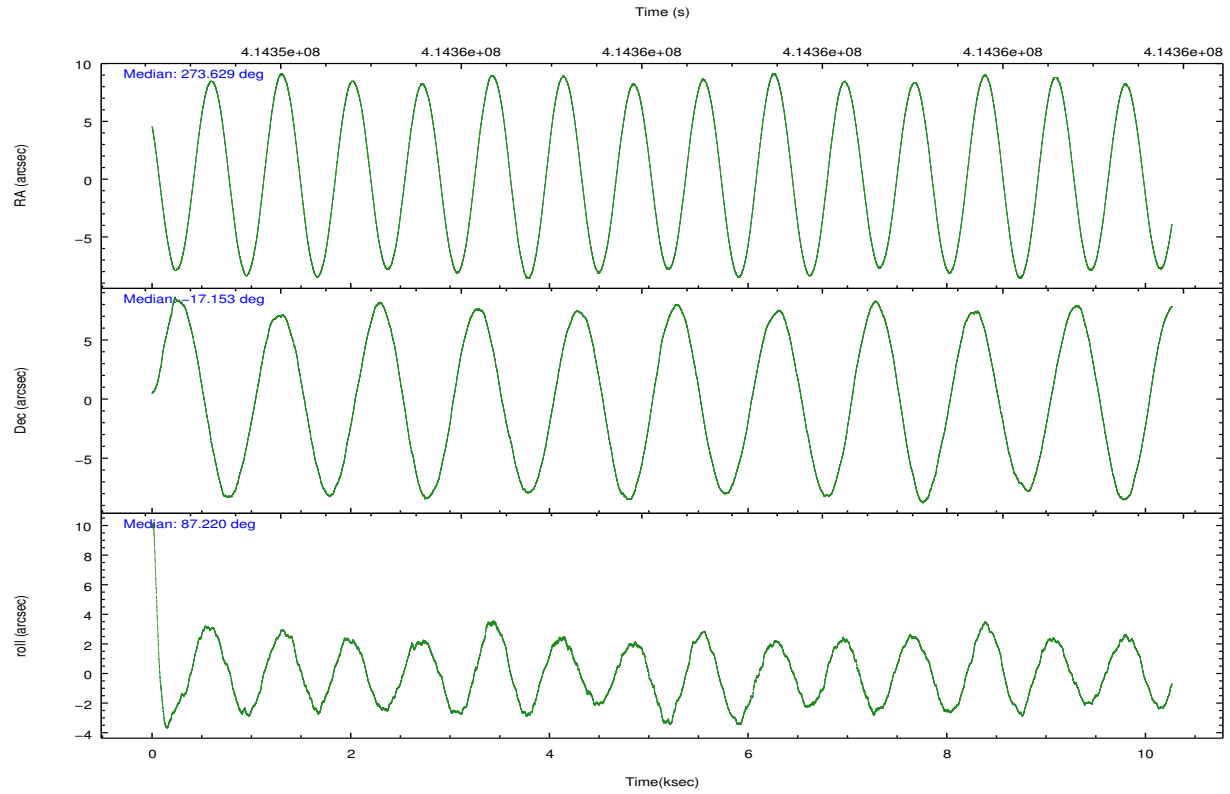
	ccd 5	ccd 6	ccd 7	ccd 8
grade 0 events	17956	91044	142428	52551
	9%	16%	10%	18%
grade 1 events	103	350	8564	294
	0%	0%	0%	0%
grade 2 events	35897	247468	321411	38407
	18%	45%	23%	13%
grade 3 events	2347	6530	84645	6388
	1%	1%	6%	2%
grade 4 events	2192	6463	84299	6102
	1%	1%	6%	2%
grade 5 events	6123	5177	54627	4693
	3%	0%	3%	1%
grade 6 events	41410	41593	461611	13306
	21%	7%	33%	4%
grade 7 events	83284	141426	233598	165783
	43%	26%	16%	57%

2.2 Compared Parameters

Parameter	Planned	Actual	Parameter	Planned	Actual
Instrument	ACIS	ACIS	Obspar format version number	7	7
Detector	ACIS-5678	ACIS-5678	Obspar file type	PREDICTED	ACTUAL
Grating	HETG	HETG	Obspar update status	NONE	UPDATED
Data mode	CC33_GRADED	CC33_GRADED	Number of optional ACIS chips dropped	0	0
Observation mode	POINTING	POINTING	On-chip summing requested	N	N
[deg] Pointing RA	273.642652	273.6291735629773	Subarray requested	NONE	NONE
[deg] Pointing Dec	-17.177310	-17.15313833906734	Alternating exposures requested	N	N
[deg] Pointing Roll	87.073844	87.2264925248743	[s] Primary exposure time	0.000000	0
[mm] SIM focus pos	-0.684267	-0.6828225247311905			
[mm] SIM defocus	0	0.001444936568705701			
[mm] SIM translation stage pos	-182.132523	-182.1370004450064			
[mm] SIM translation stage offset	-8	-7.995522138001405			
[s] Observation start time (MET)	414353355.184000	414352690.44843			
Observation start date	2011-02-17T18:08:09	2011-02-17T17:58:10			
[s] Observation end time (MET)	414363355.184000	414364299.08653			
Observation end date	2011-02-17T20:54:49	2011-02-17T21:11:39			
Read mode	CONTINUOUS	CONTINUOUS			

2.3 Aspect



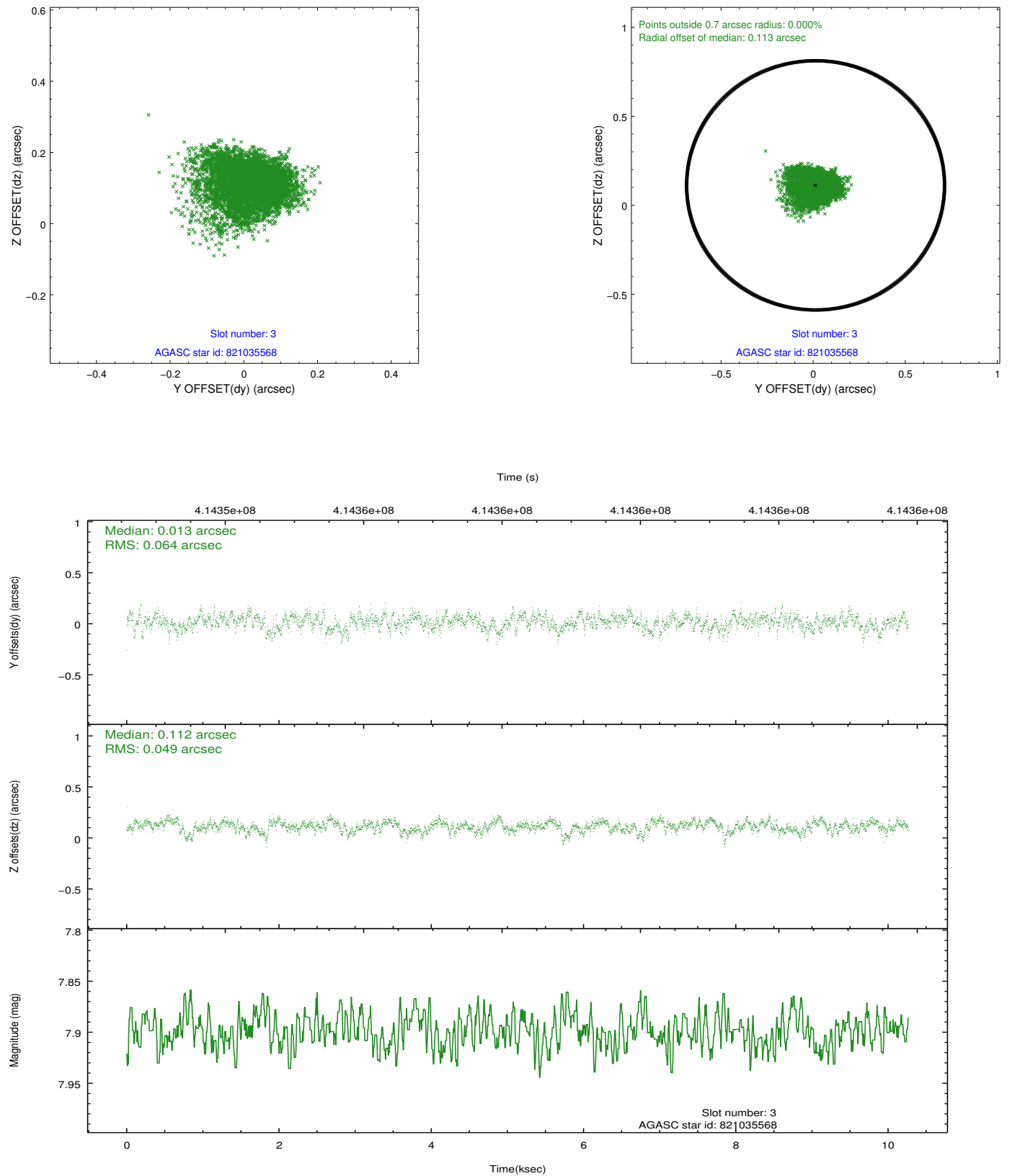


Slot Statistics

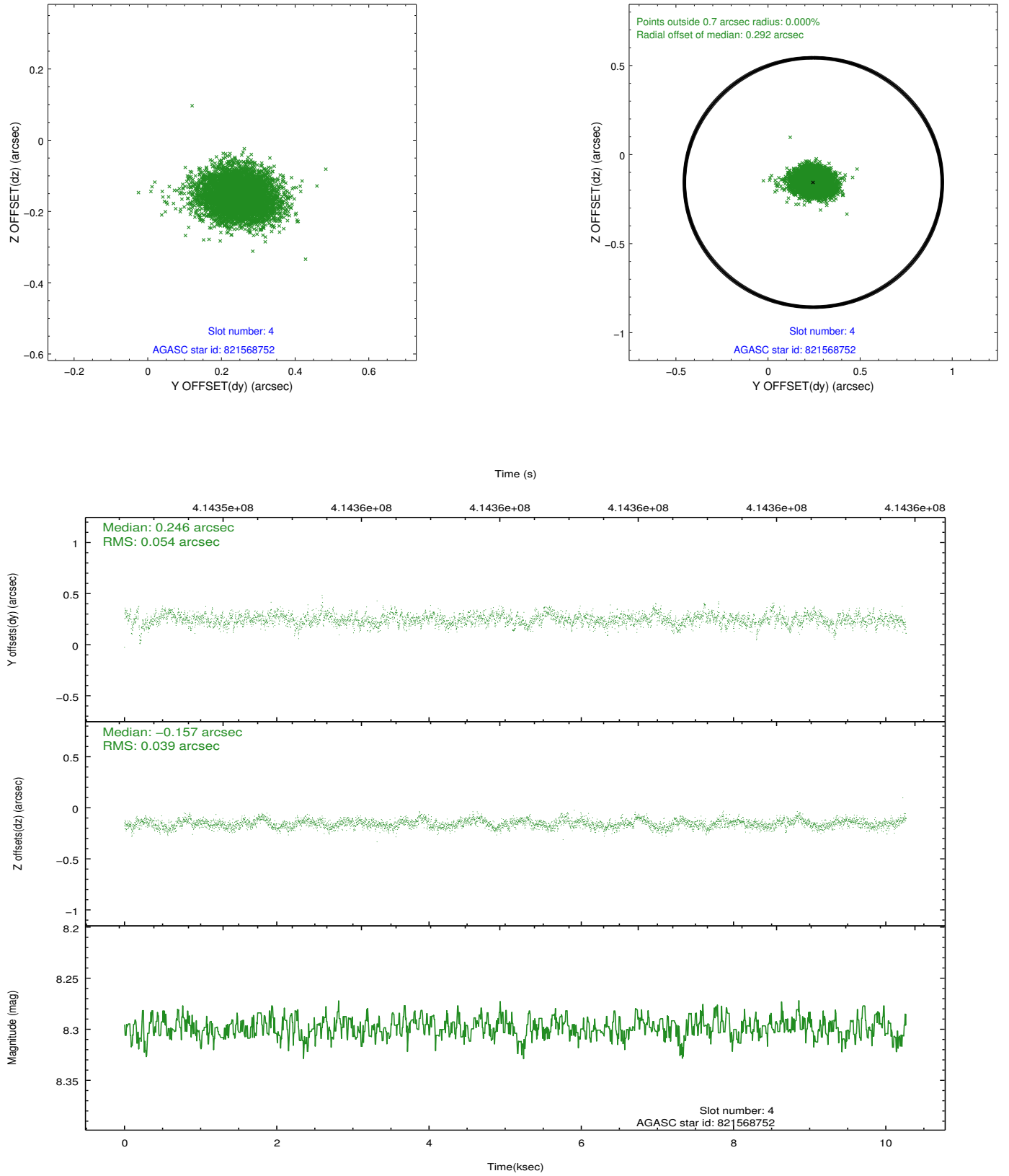
slot	status	id	mag	n_pts	med_dy	med_dz	dr1	dr2	ra	dec	mean_y	mean_z
0	FID	ACIS-S-2	6.86	2504	-0.134	-0.090	0.006	0.011	0.000000	0.000000	-769.26	-1904.63
1	FID	ACIS-S-4	6.93	2504	0.121	0.080	0.006	0.010	0.000000	0.000000	2144.07	3.36
2	FID	ACIS-S-6	7.16	2504	-0.014	0.017	0.008	0.013	0.000000	0.000000	393.55	641.31
3	GUIDE	821035568	7.90	5005	0.013	0.112	0.084	0.143	273.834124	-16.831485	1276.84	-595.15
4	GUIDE	821568752	8.30	5009	0.246	-0.157	0.068	0.115	273.050073	-17.733446	-2106.08	1926.43
5	GUIDE	821570064	6.67	5009	0.048	-0.270	0.063	0.103	273.185111	-17.414521	-935.46	1525.89
6	GUIDE	821707704	8.94	5008	-0.095	0.469	0.086	0.140	274.330077	-16.988328	796.19	-2328.32
7	GUIDE	821053528	8.33	5006	-0.207	-0.149	0.075	0.124	273.625019	-16.498449	2437.41	185.35

2.4 Star Slots

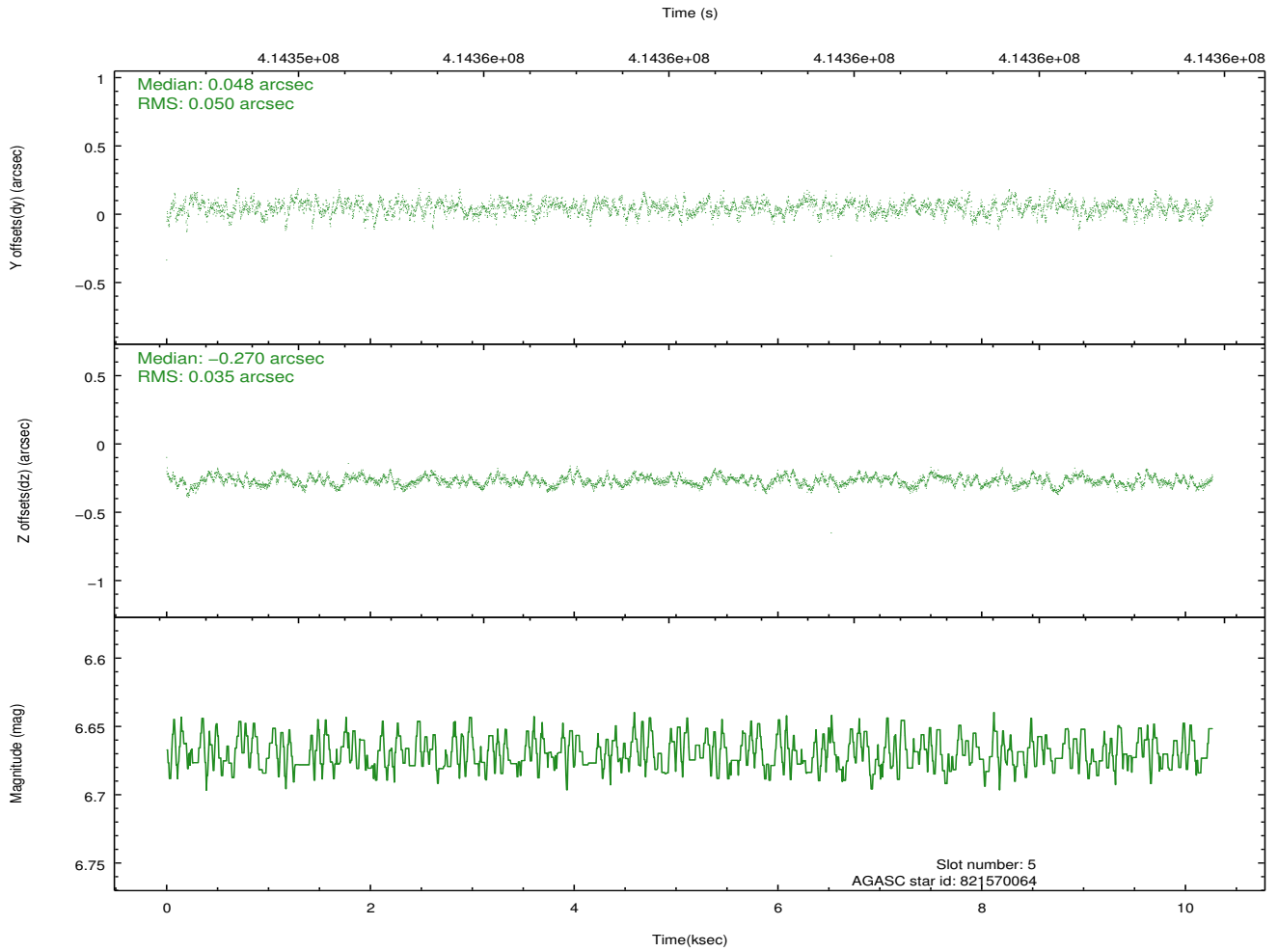
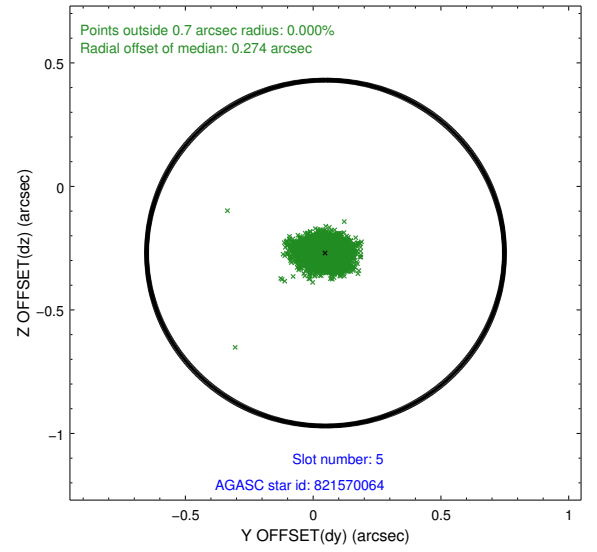
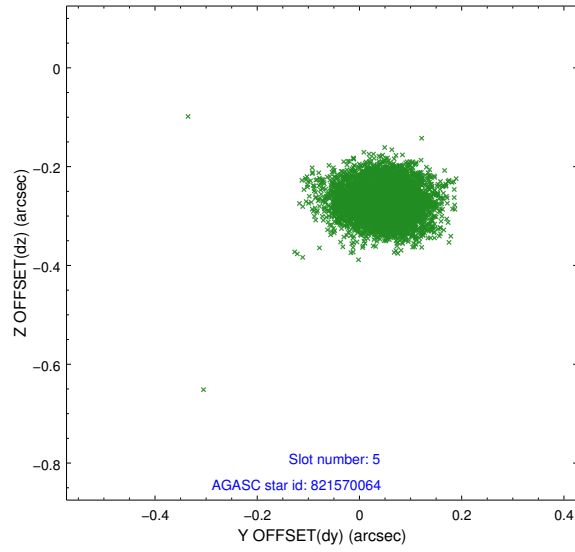
2.4.1 Slot 3



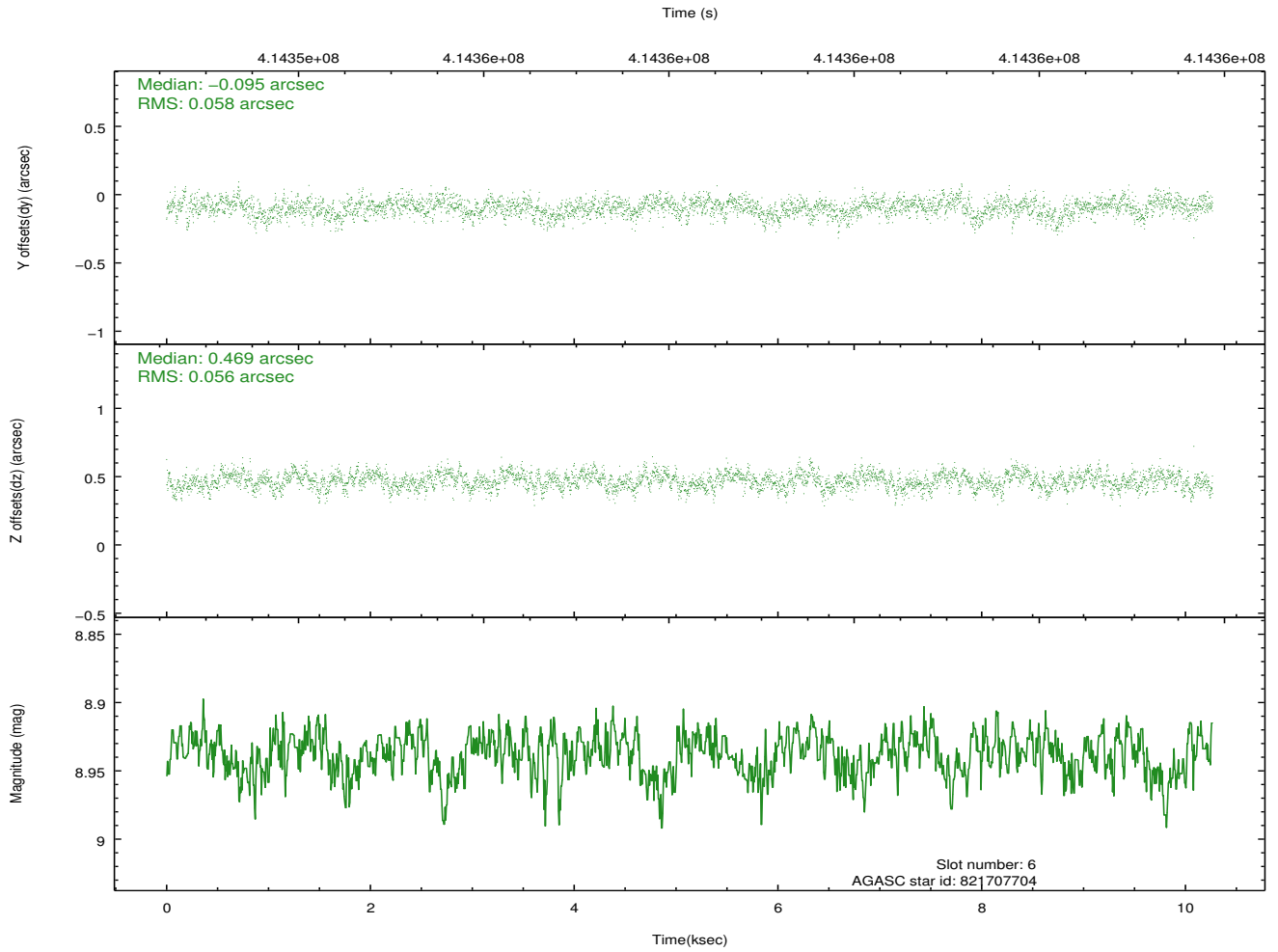
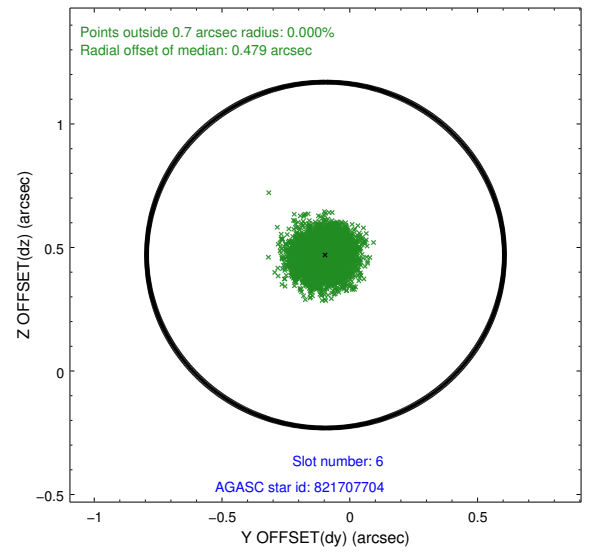
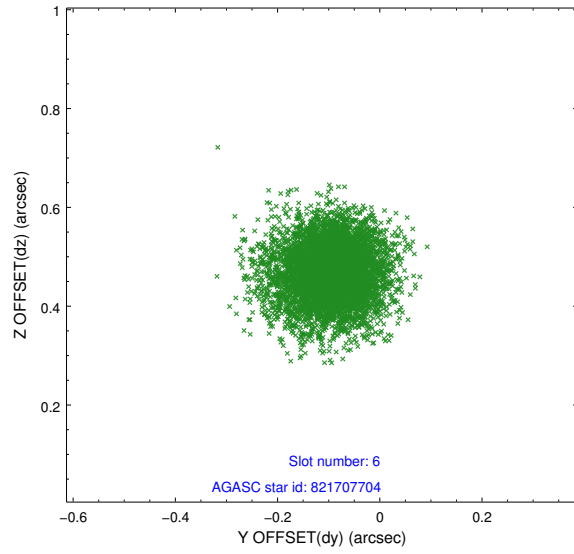
2.4.2 Slot 4



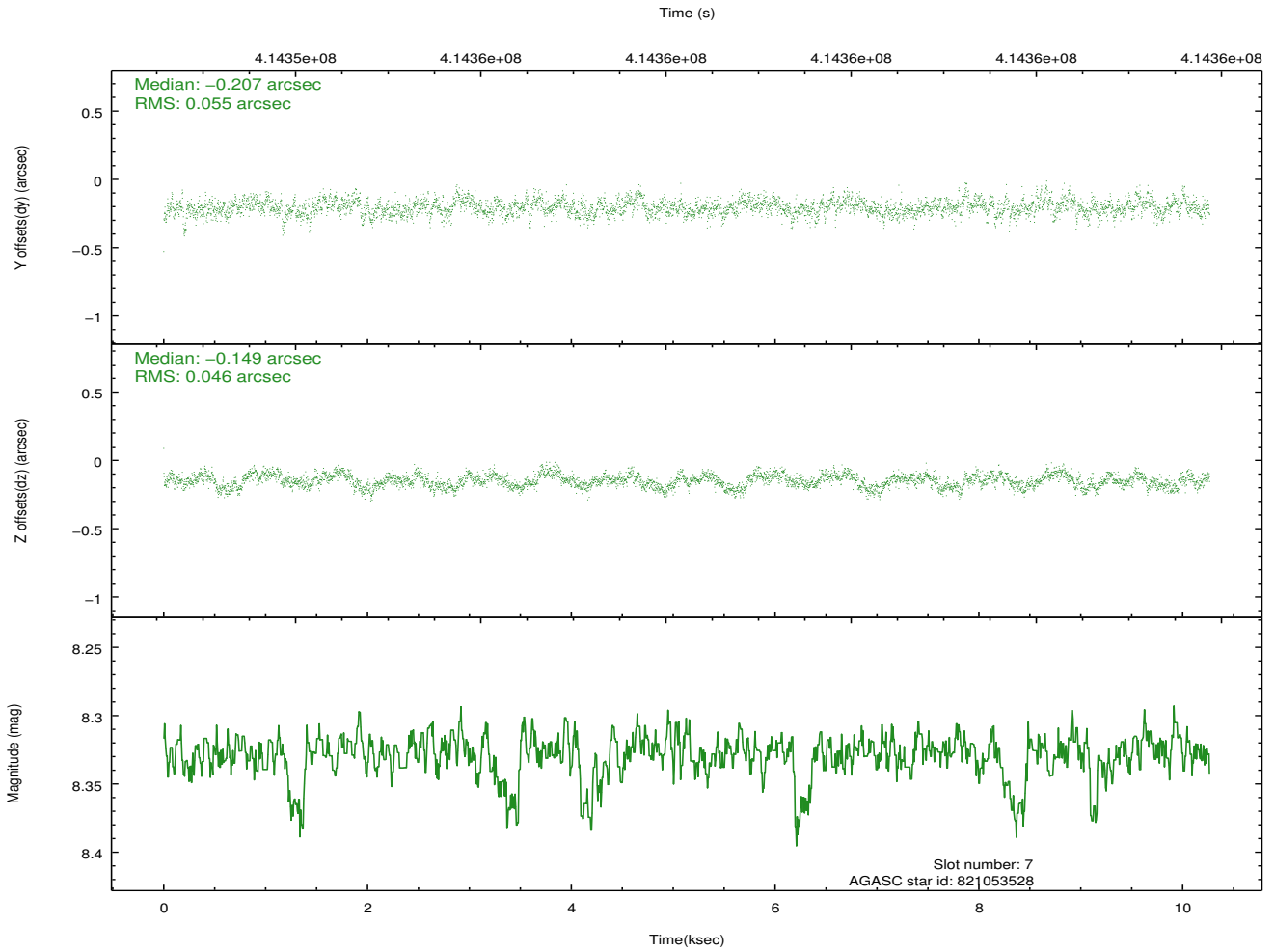
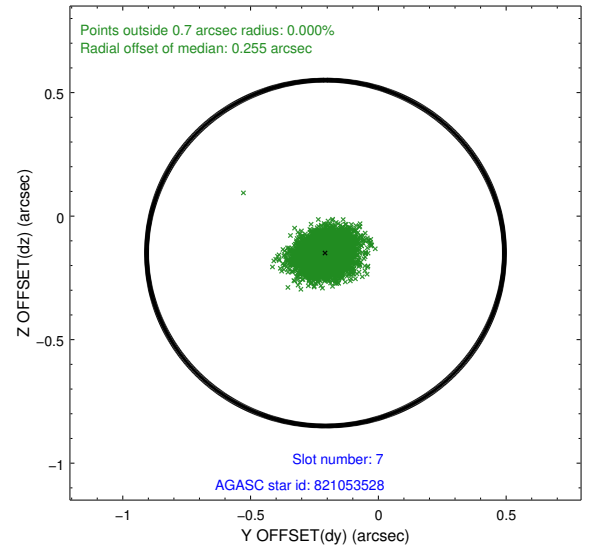
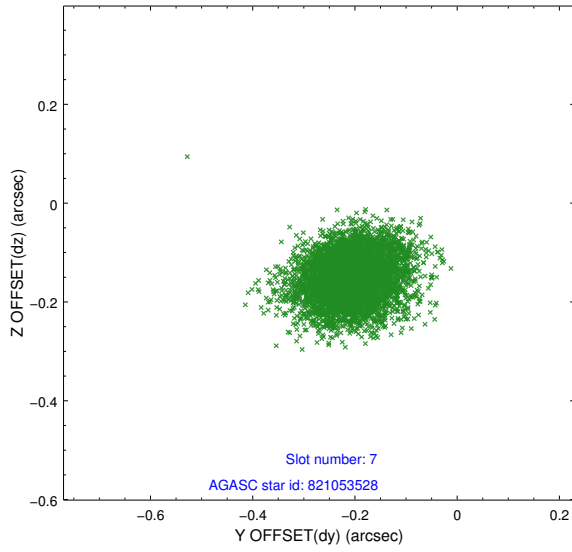
2.4.3 Slot 5



2.4.4 Slot 6

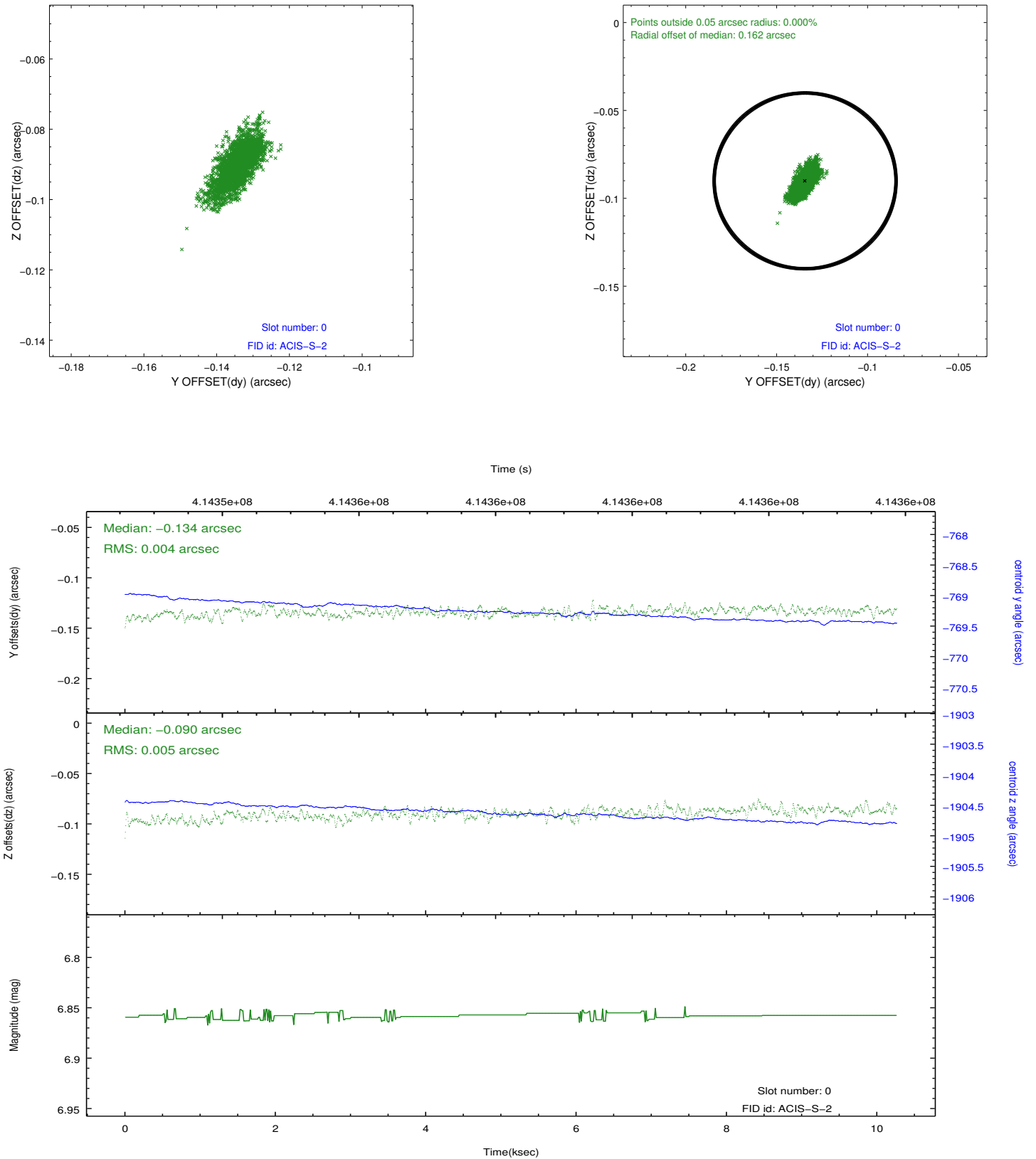


2.4.5 Slot 7

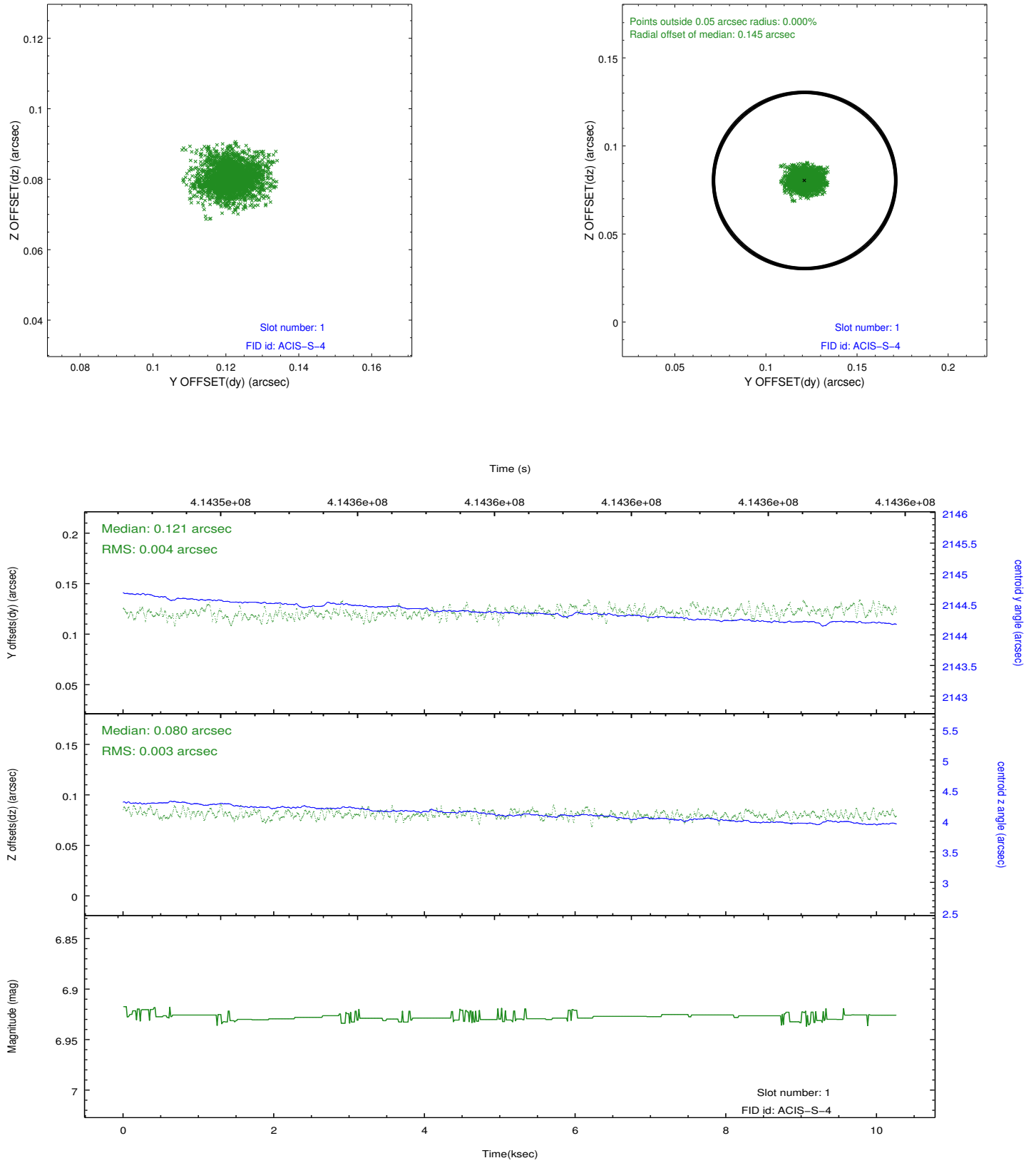


2.5 FID Slots

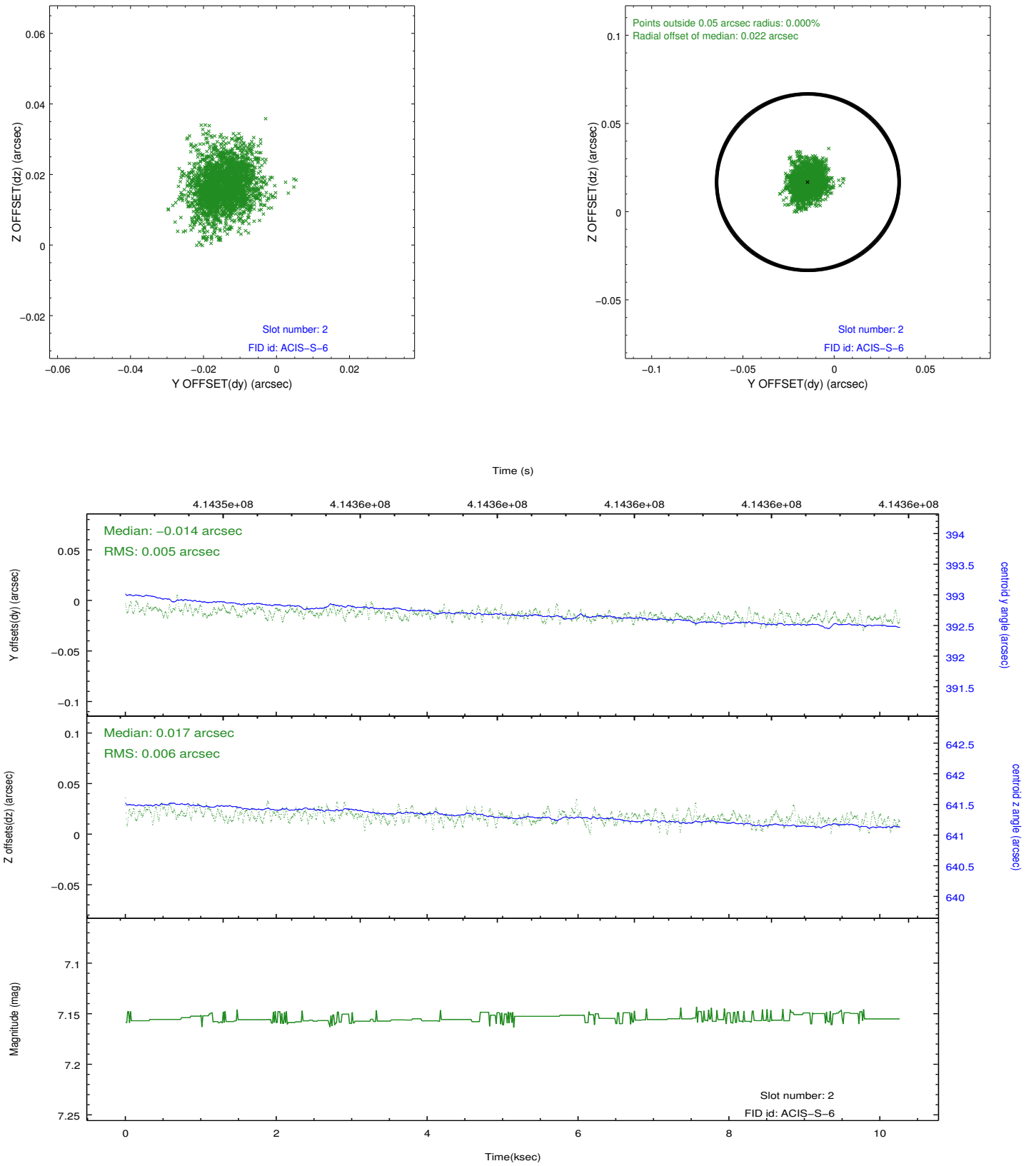
2.5.1 Slot 0



2.5.2 Slot 1

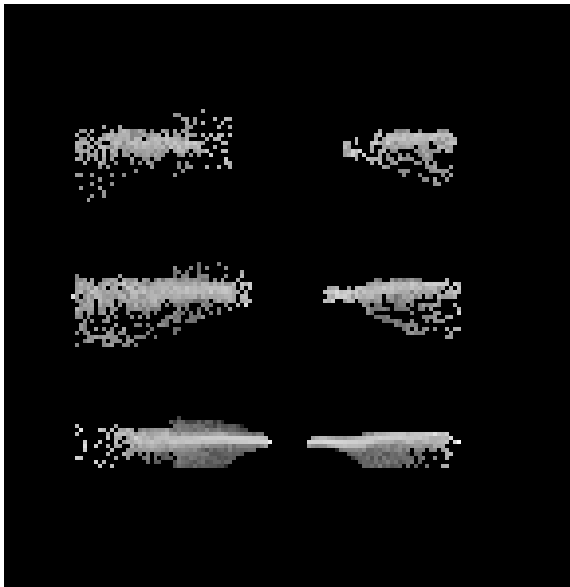


2.5.3 Slot 2

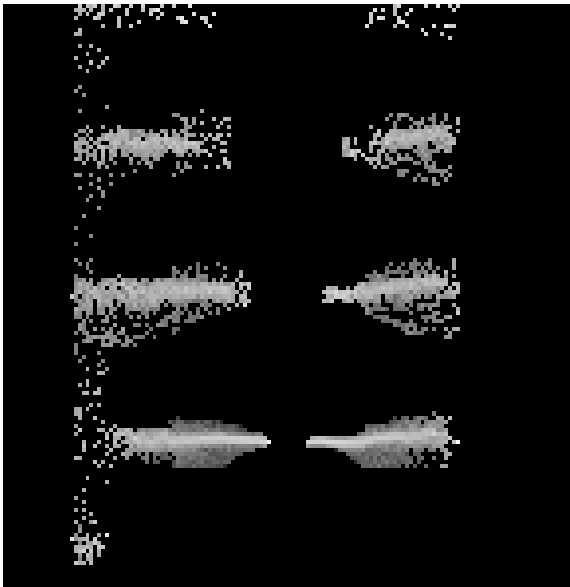


3 Gratings

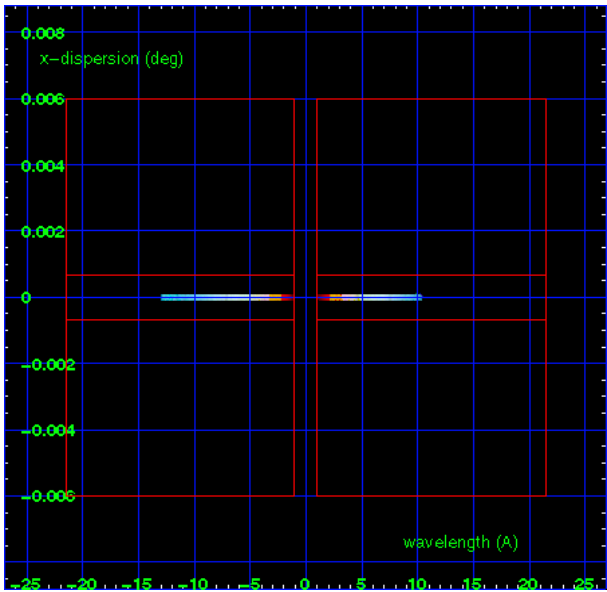
3.1 HEG Arm



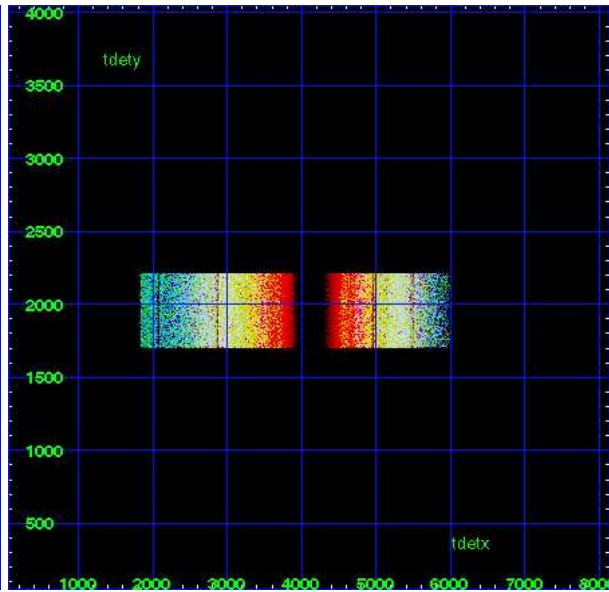
HEG Order Sort 123



HEG Order Sort ALL

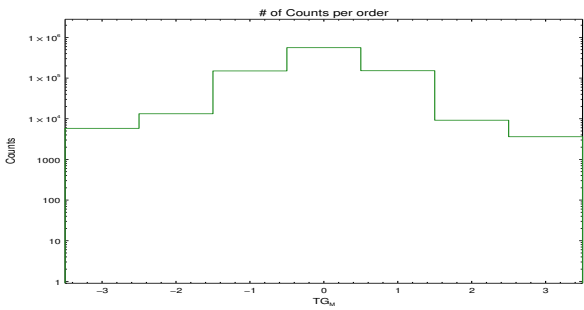


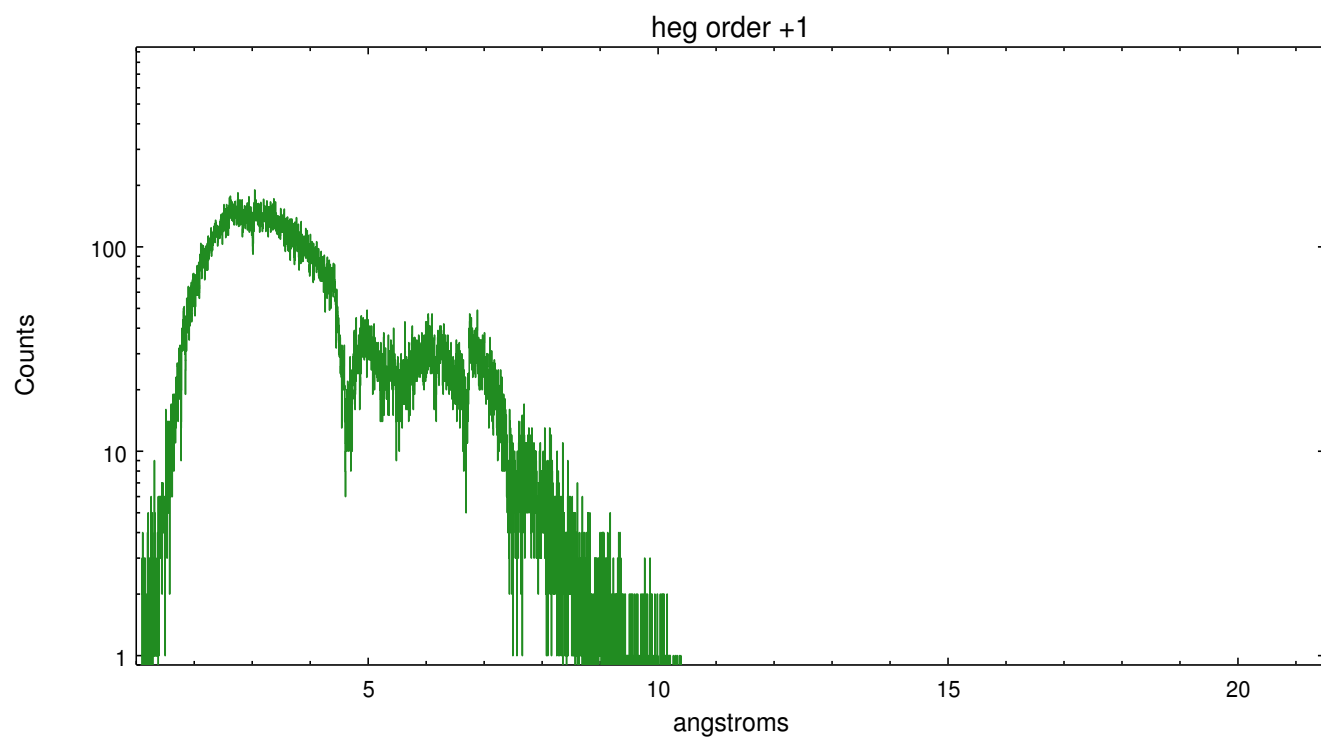
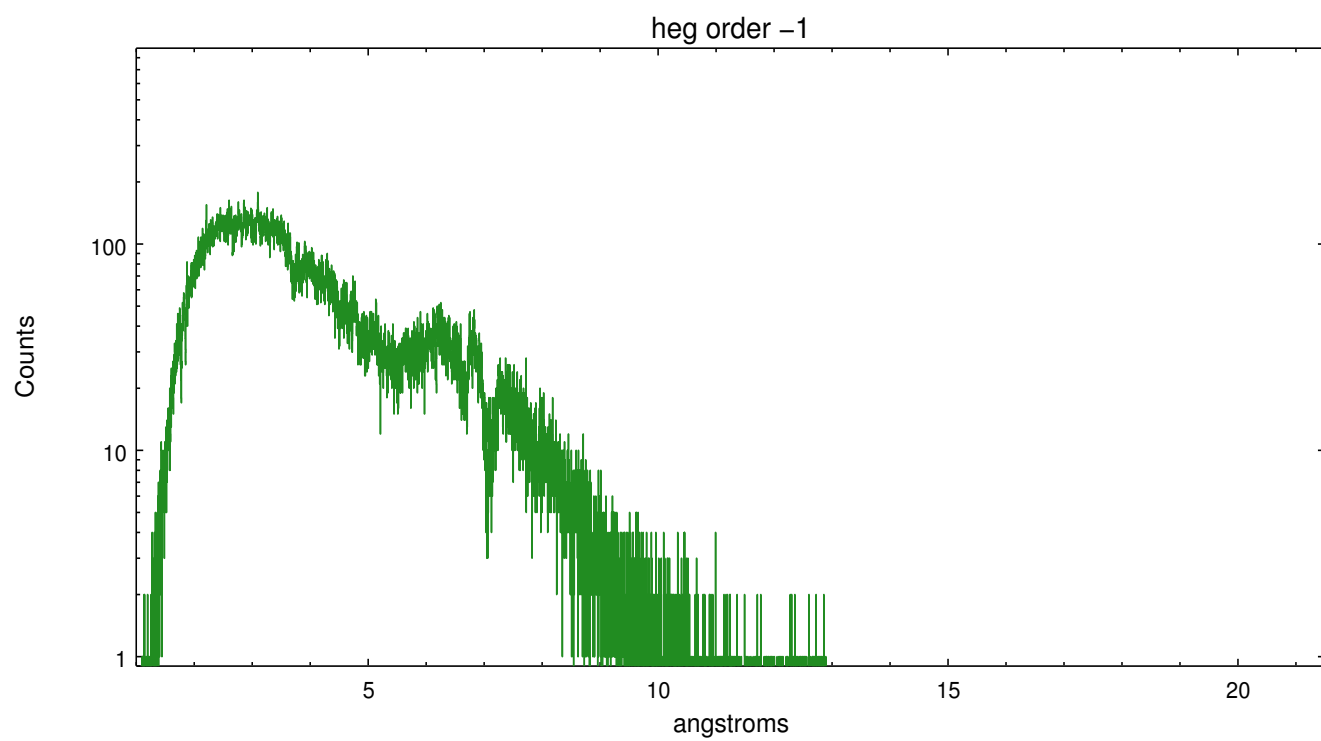
Spot Image HEG



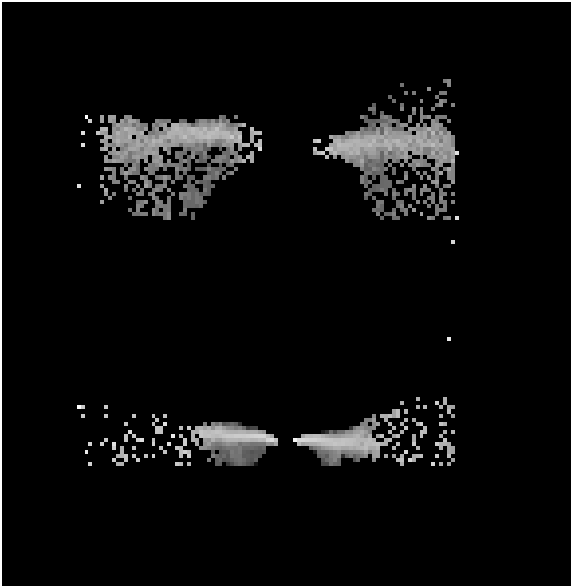
Full Detector HEG

	order -3	order -2	order -1	order 0	order 1	order 2	order 3
Events	5810	13280	150150	560808	152128	9207	3617

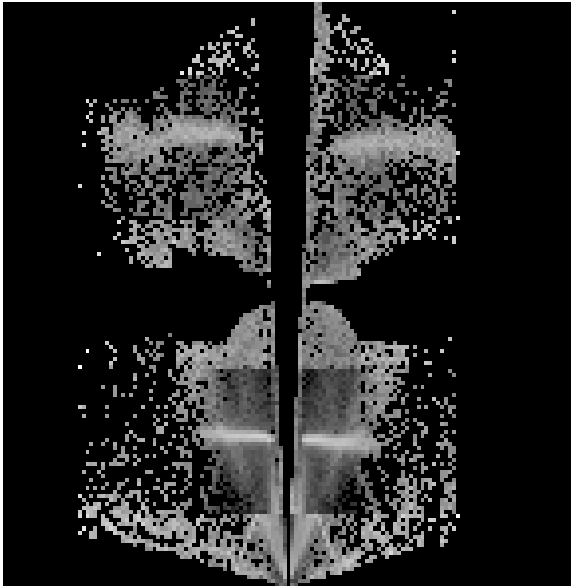




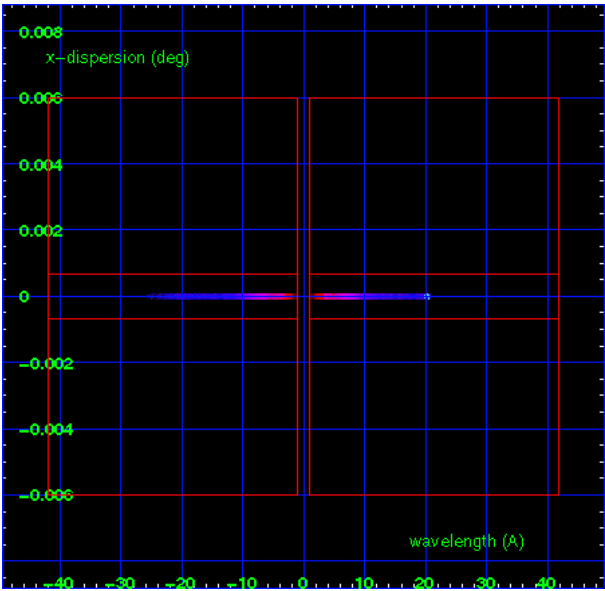
3.2 MEG Arm



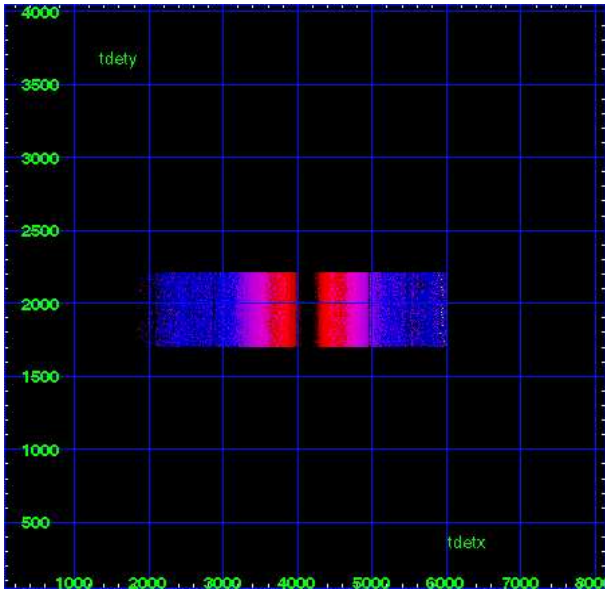
MEG Order Sort 123



MEG Order Sort ALL

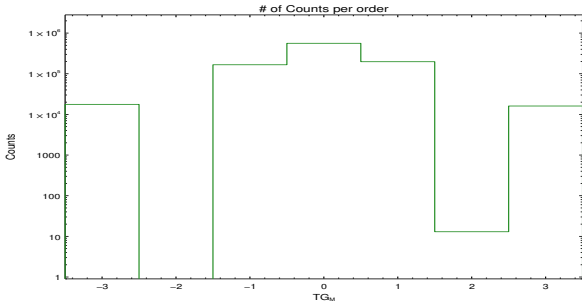


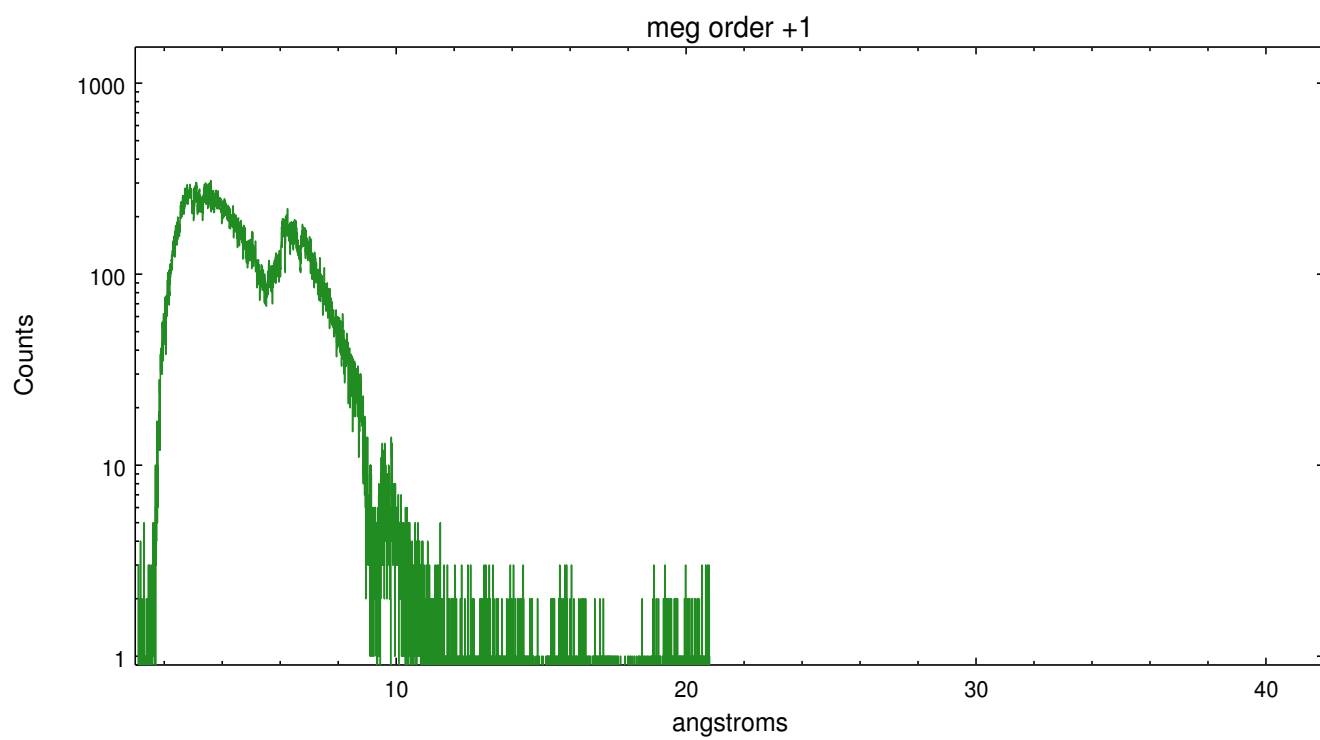
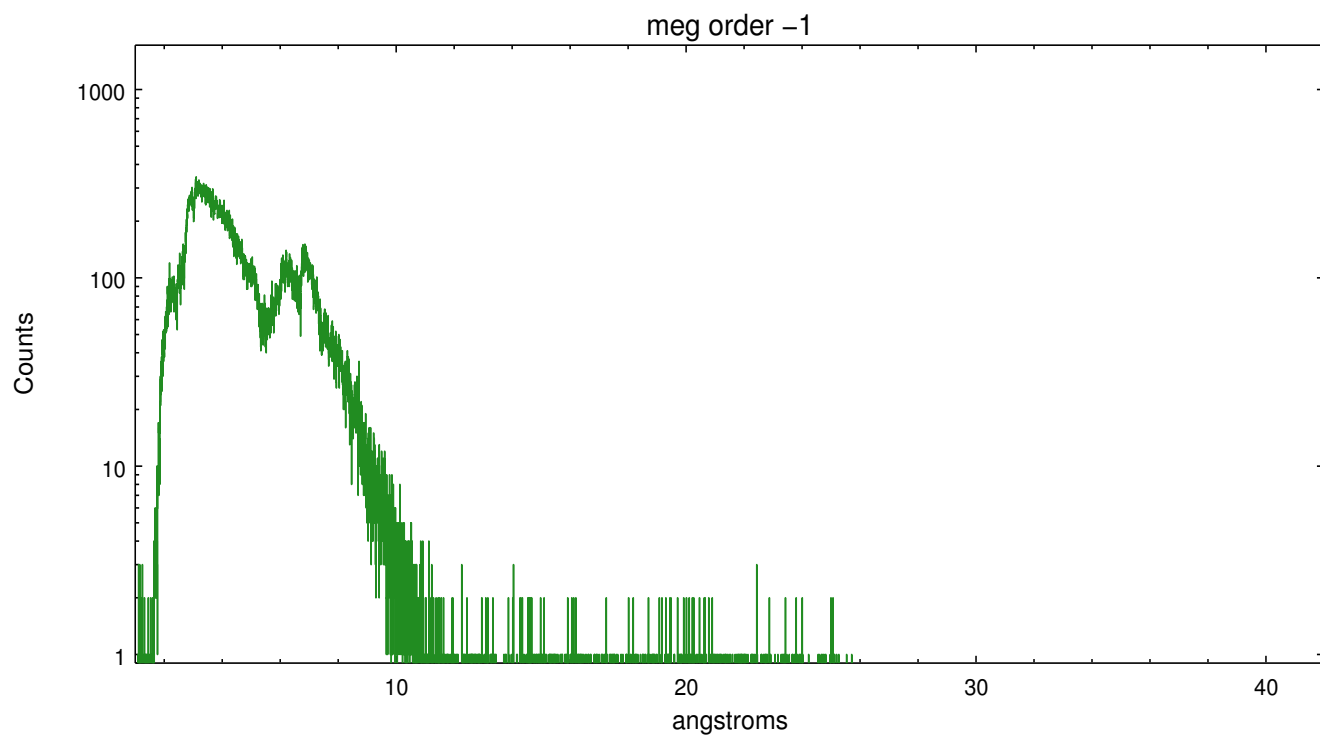
Spot Image MEG



Full Detector MEG

	order -3	order -2	order -1	order 0	order 1	order 2	order 3
Events	17648	0	166401	560808	197796	13	16081





A Summary

A.1 Status

V&V Scientist	David Huenemoerder
V&V Date (YYYY-MM-DD)	2012.02.09
V&V Edition	1
V&V Disposition and Status	OK
V&V Charge Time	10.12975

A.2 Comments