

# V&V Reference Report

## L2 ASCDS Version : 8.4.5

Observation 13182 - L2 Version 2  
Chandra X-Ray Center

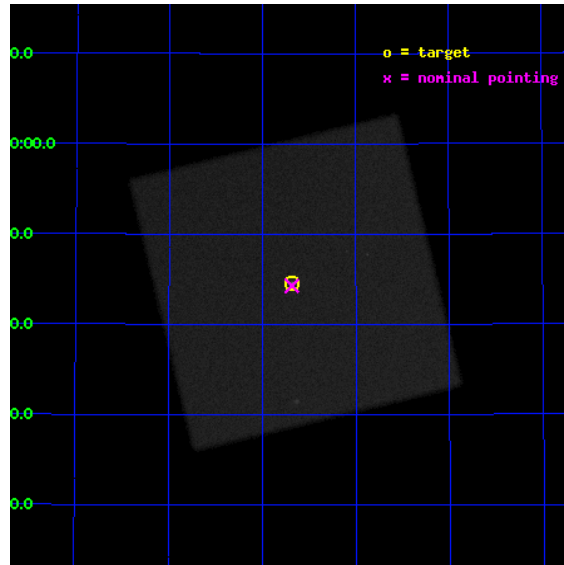
L2 Processing Date : Jul 8 2012

## Contents

<b>1</b>	<b>Front</b>	<b>2</b>
<b>2</b>	<b>OBI</b>	<b>3</b>
2.1	OBI . . . . .	3
2.1.1	Images . . . . .	3
2.1.2	Parameters . . . . .	4
2.1.3	Events . . . . .	4
2.2	Compared Parameters . . . . .	5
2.3	Aspect . . . . .	6
2.4	Star Slots . . . . .	9
2.4.1	Slot 3 . . . . .	9
2.4.2	Slot 4 . . . . .	10
2.4.3	Slot 5 . . . . .	11
2.4.4	Slot 6 . . . . .	12
2.4.5	Slot 7 . . . . .	13
2.5	FID Slots . . . . .	14
2.5.1	Slot 0 . . . . .	14
2.5.2	Slot 1 . . . . .	15
2.5.3	Slot 2 . . . . .	16
<b>A</b>	<b>Summary</b>	<b>17</b>
A.1	Status . . . . .	17
A.2	Comments . . . . .	17

# 1 Front

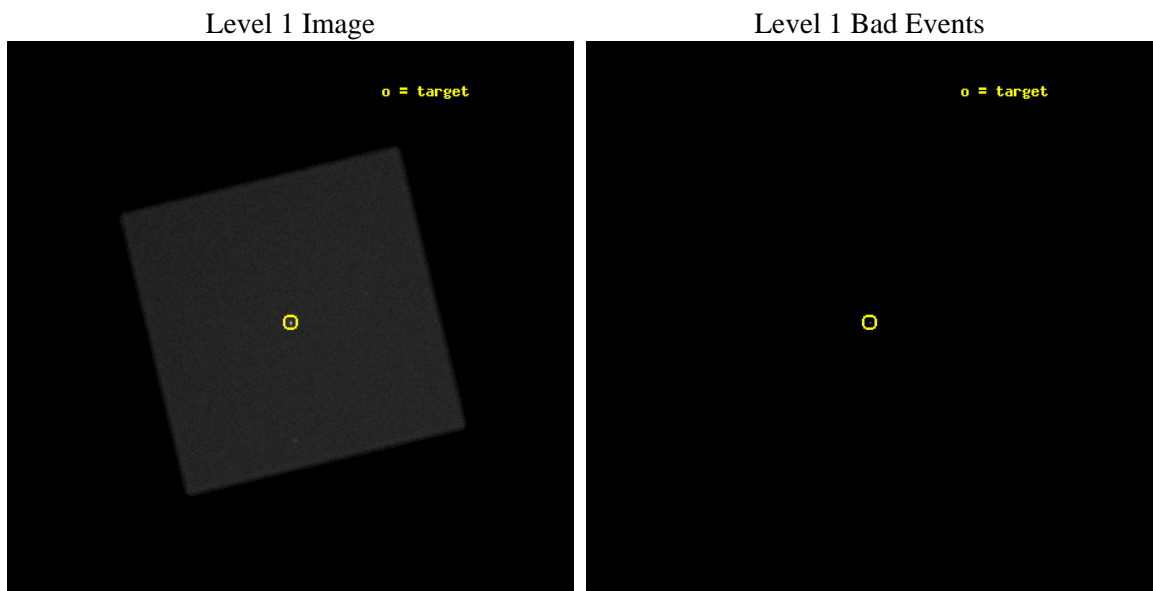
seq_num	290966	Sequence number
obs_id	13182	Observation id
title	AO-12 Calibration Observations to Monitor the Spatial Variations in the HRC-I Gain	Proposal title
observer	Dr. CXC Calibration	Principal investigator
object	ArLac	Source name
ra_targ	332.17	Observer's specified target RA [deg]
dec_targ	45.742306	Observer's specified target Dec [deg]
ra_nom	332.17106315813	Nominal RA [deg]
dec_nom	45.73817165926	Nominal Dec [deg]
roll_nom	301.41391297181	Nominal Roll [deg]
revision	2	Processing version of data
ontime	18160.182187021	[s]
livetime	17964.382597263	Ontime multiplied by DTCOR
l2events	1402381	Number of level 2 events



## 2 OBI

### 2.1 OBI

#### 2.1.1 Images



### 2.1.2 Parameters

obi_num	0	Obi number	sched_exp_time	18000.000000	[s] Scheduled observation exposure time
ascdsver	8.4.5	Processing system revision	ontime	18160.182187021	[s]
caldsver	4.5.0	&#160	l1events	2021853	Number of level 1 events
date	2012-07-08T05:50:23	Date and time of file creation			
revision	2	Processing version of data			

### 2.1.3 Events

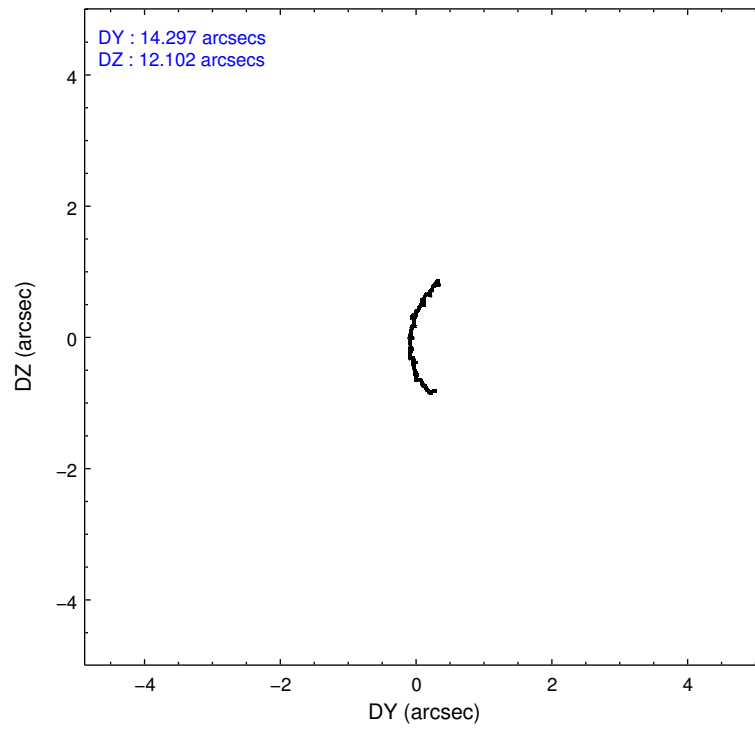
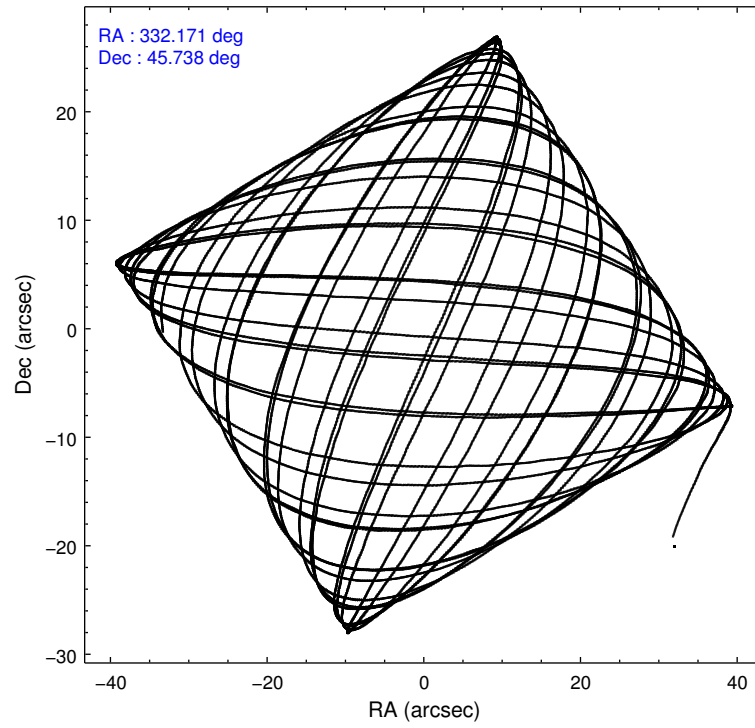
#### Level 1 Events

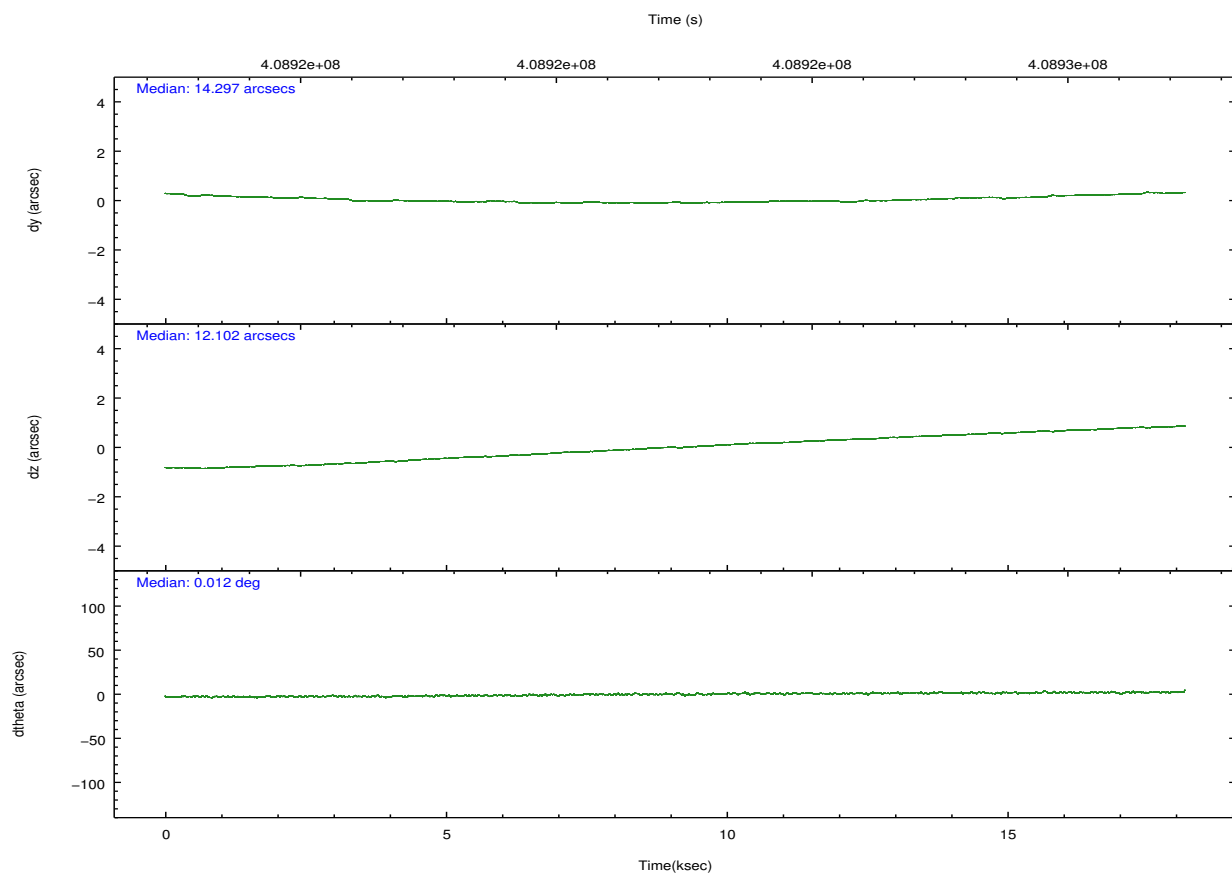
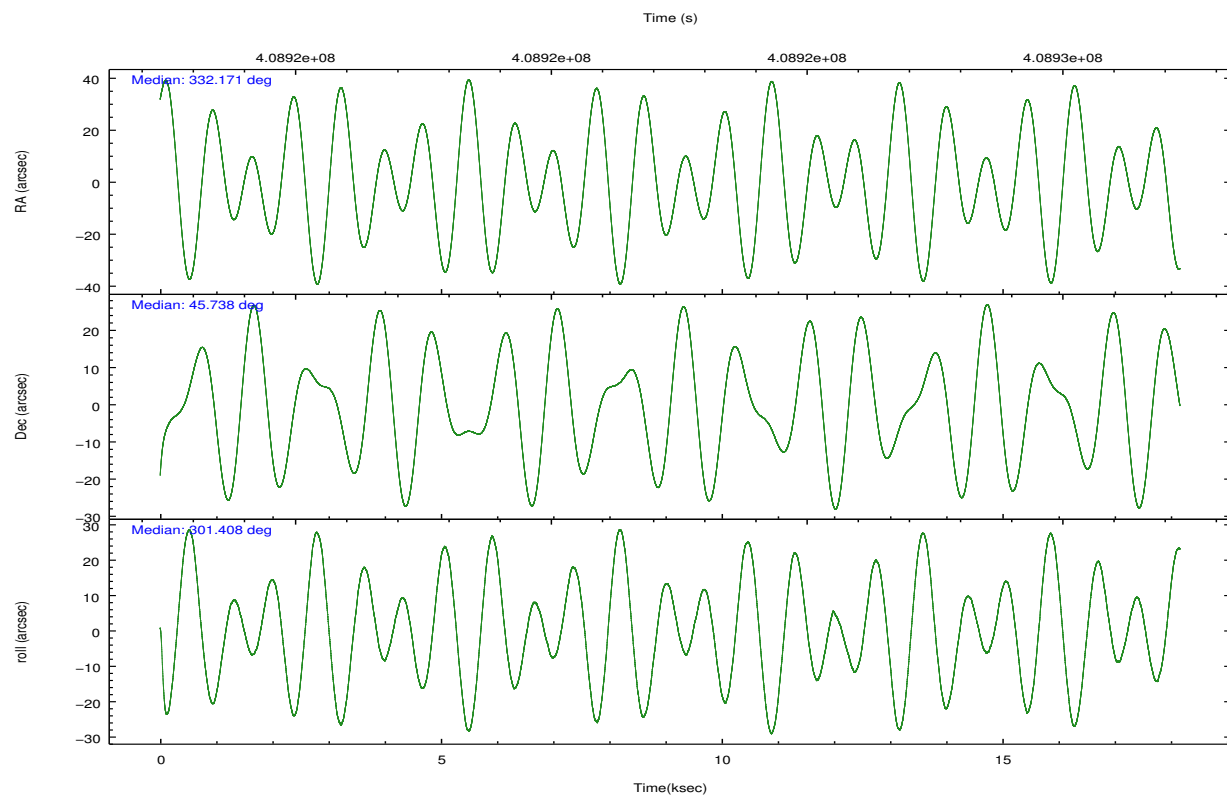
	<b>segment 0</b>
level 1 events	2021853
rejected events	95338
rejected %	4%

## 2.2 Compared Parameters

Parameter	Planned	Actual	Parameter	Planned	Actual
Instrument	HRC	HRC	Obspar format version number	7	7
Detector	HRC-I	HRC-I	Obspar file type	PREDICTED	ACTUAL
Grating	NONE	NONE	Obspar update status	NONE	UPDATED
Data mode	OBSERVING	OBSERVING			
Observation mode	POINTING	POINTING			
[deg] Pointing RA	332.136371	332.1710631581332			
[deg] Pointing Dec	45.750589	45.73817165926005			
[deg] Pointing Roll	301.534239	301.4139129718081			
[s] Window start time (MET)	407548866.184000	407548866.184000			
[s] Window stop time (MET)	410140866.184000	410140866.184000			
[mm] SIM focus pos	-1.040293	-1.038866356238299			
[mm] SIM defocus	0	0.001426264420575141			
[mm] SIM translation stage pos	126.985494	126.9829799899862			
[mm] SIM translation stage offset	0	0.002508901615314585			
[s] Observation start time (MET)	408913398.184000	408912333.54221			
Observation start date	2010-12-16T19:02:12	2010-12-16T18:45:33			
[s] Observation end time (MET)	408931398.184000	408932048.39323			
Observation end date	2010-12-17T00:02:12	2010-12-17T00:14:08			

## 2.3 Aspect



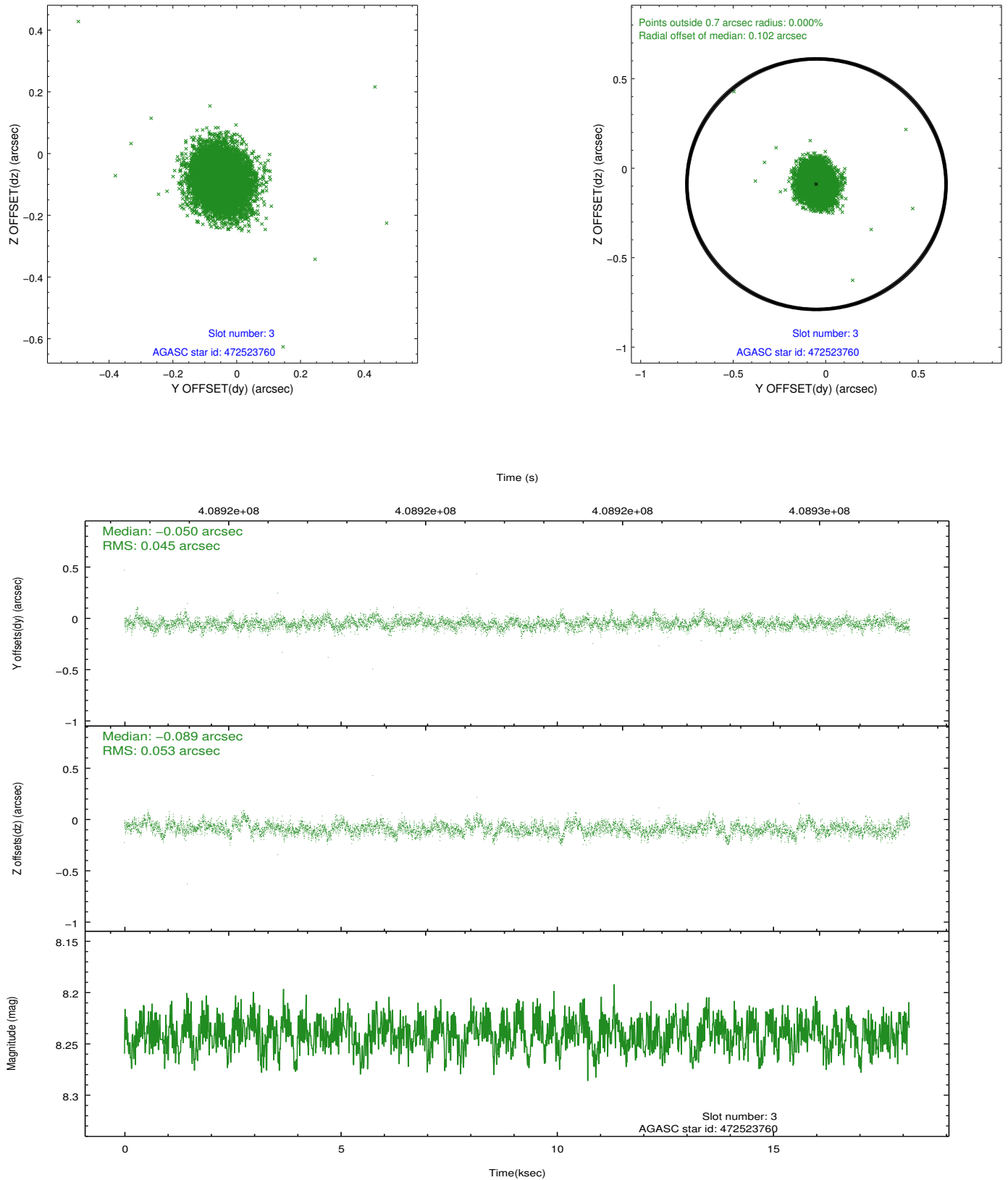


### Slot Statistics

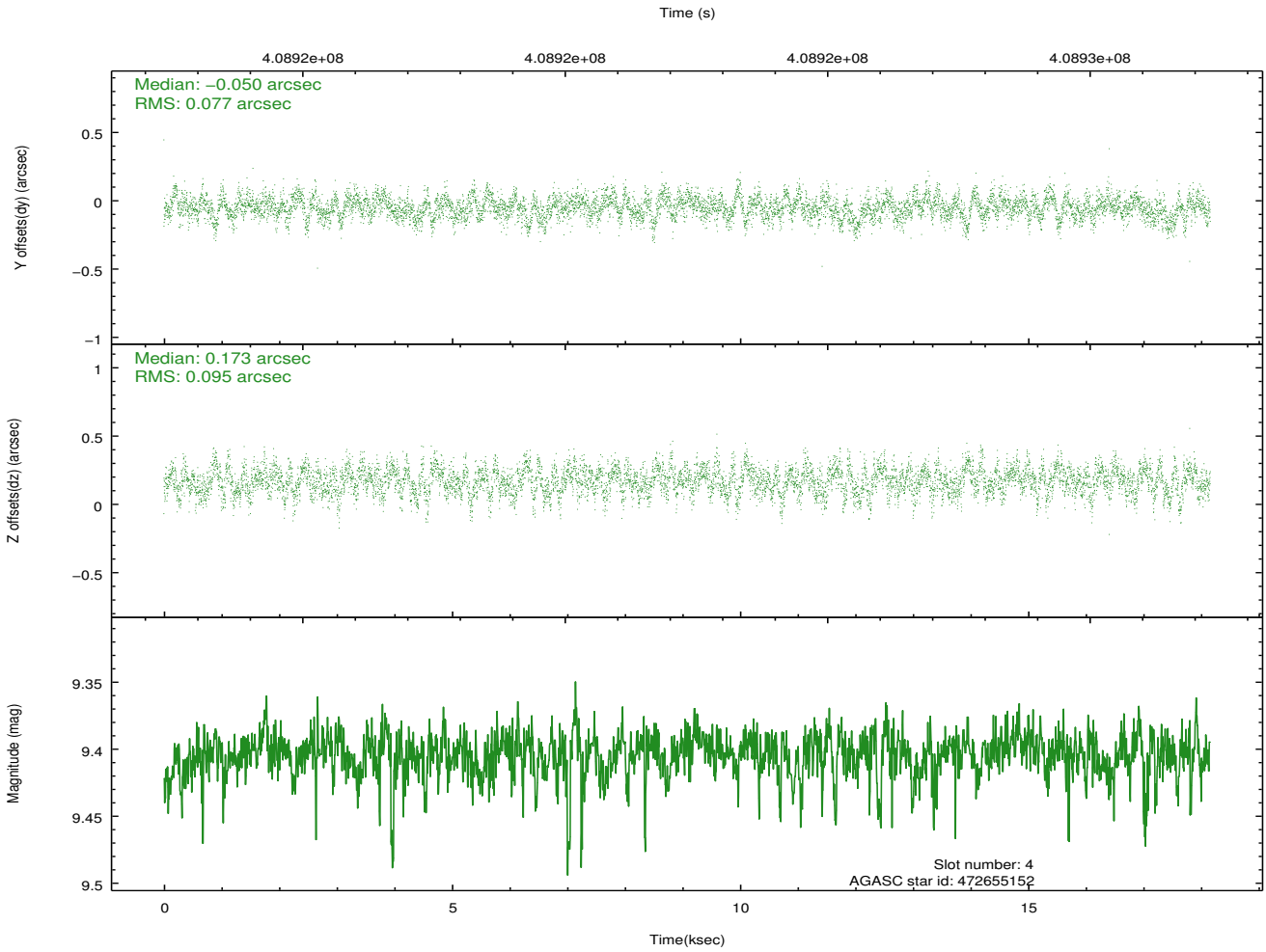
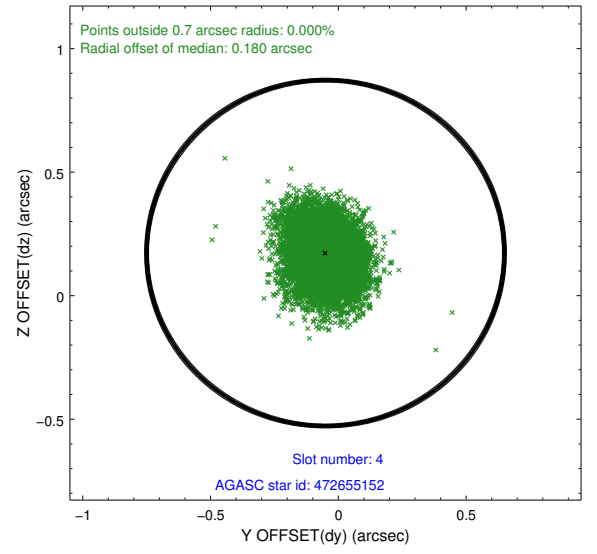
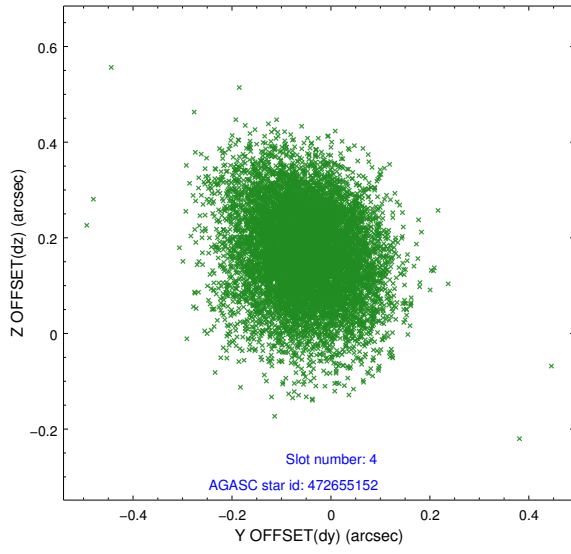
slot	status	id	mag	n_pts	med_dy	med_dz	dr1	dr2	ra	dec	mean_y	mean_z
0	FID	HRC-I-1	6.95	4430	-0.111	-0.002	0.023	0.035	0.000000	0.000000	-770.31	-1300.05
1	FID	HRC-I-2	6.98	4430	0.208	-0.087	0.017	0.042	0.000000	0.000000	842.46	-1302.07
2	FID	HRC-I-4	6.95	4430	0.021	-0.005	0.019	0.028	0.000000	0.000000	1272.92	1001.72
3	GUIDE	472523760	8.24	8859	-0.050	-0.089	0.072	0.119	331.645363	45.403260	413.85	-1709.95
4	GUIDE	472655152	9.40	8842	-0.050	0.173	0.129	0.214	332.504239	45.862991	135.95	998.79
5	GUIDE	472665256	9.02	8850	-0.045	-0.135	0.104	0.168	332.808125	46.195041	-494.23	2267.21
6	GUIDE	420754040	9.08	8838	0.245	-0.118	0.120	0.194	331.917939	44.882543	2372.51	-2107.30
7	GUIDE	472533912	9.13	8852	-0.098	0.172	0.099	0.166	331.791136	46.368695	-2346.27	433.52

## 2.4 Star Slots

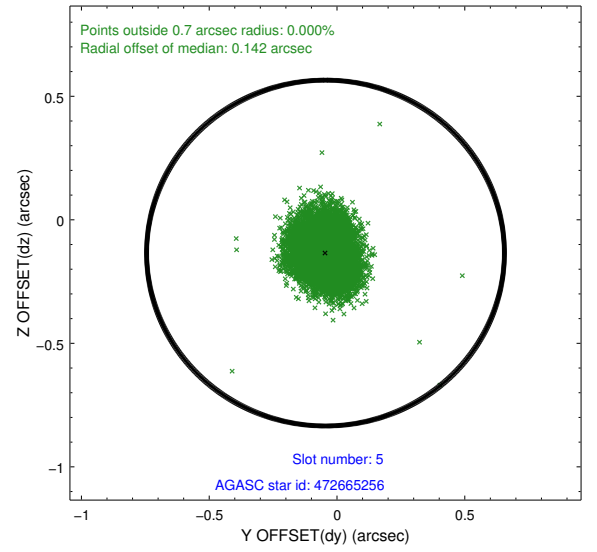
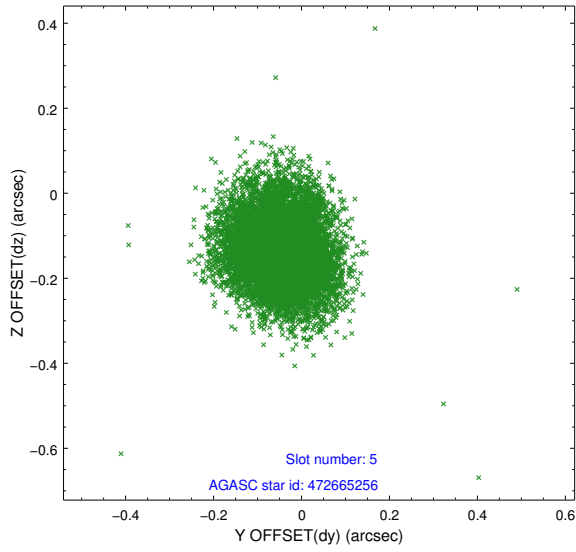
### 2.4.1 Slot 3



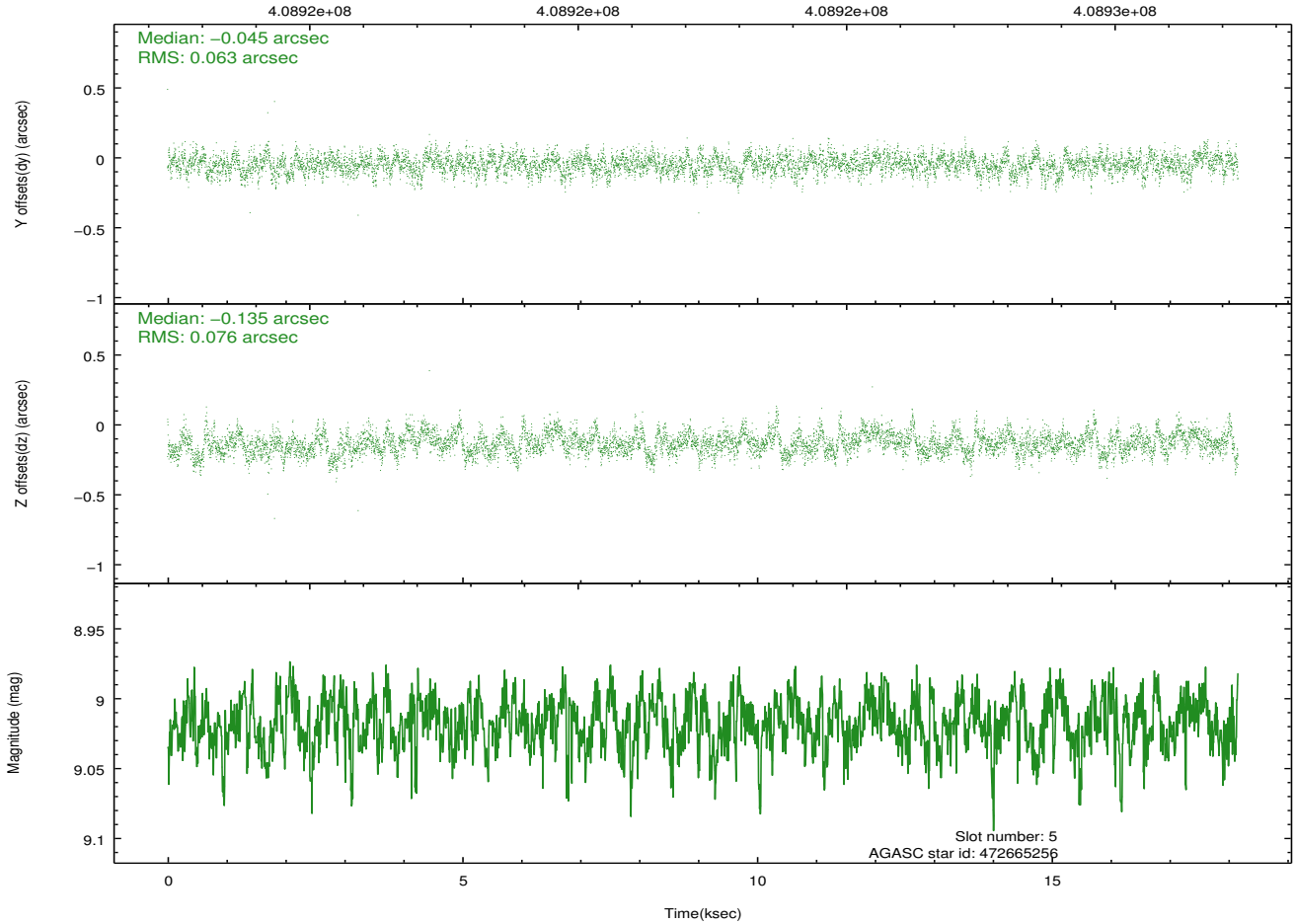
## 2.4.2 Slot 4



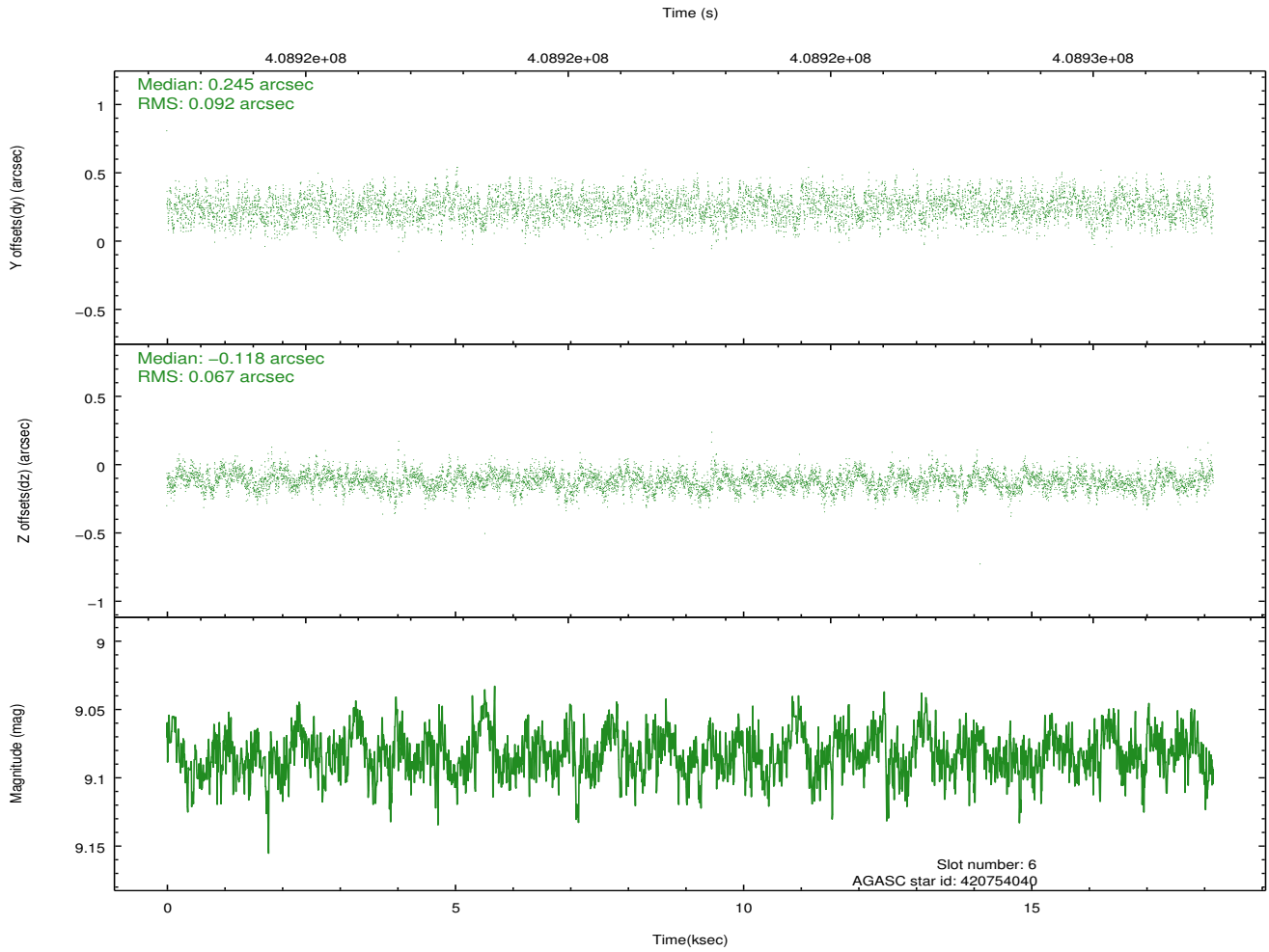
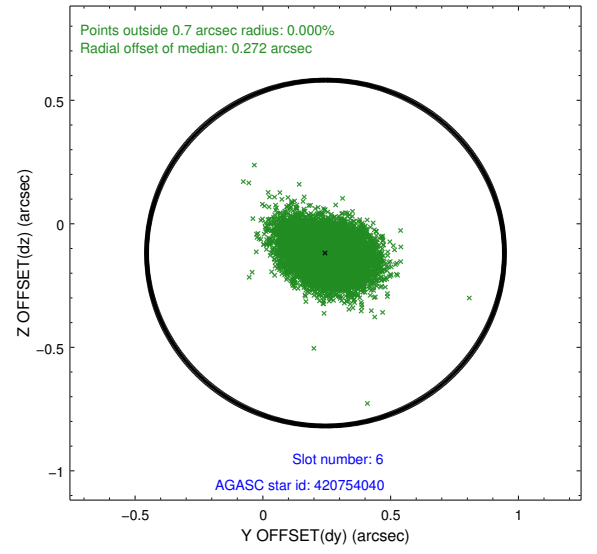
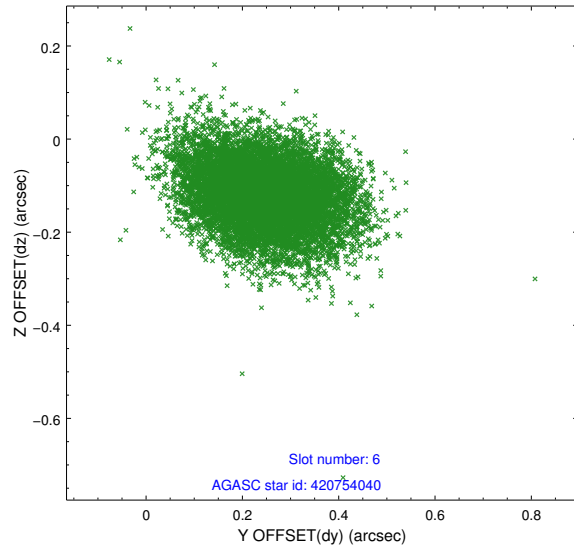
### 2.4.3 Slot 5



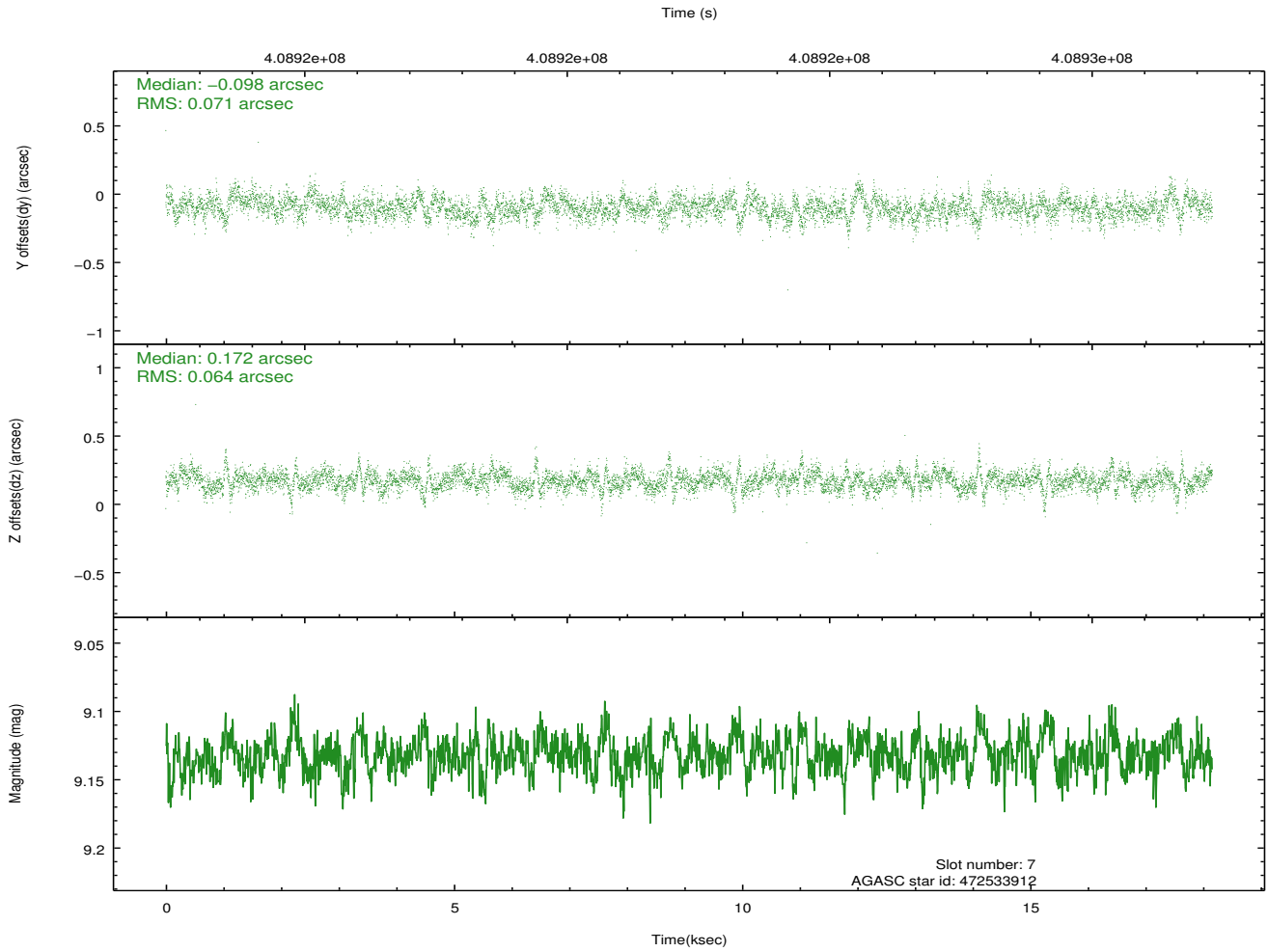
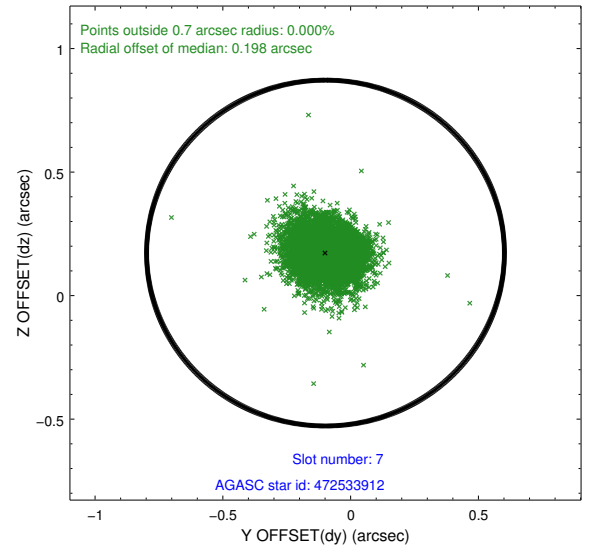
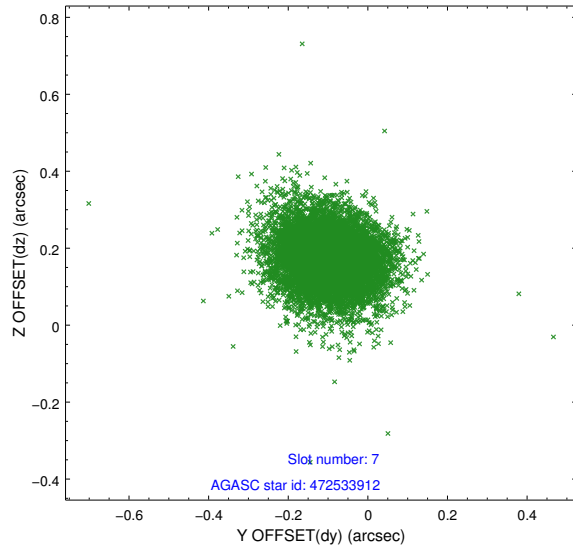
Time (s)



## 2.4.4 Slot 6

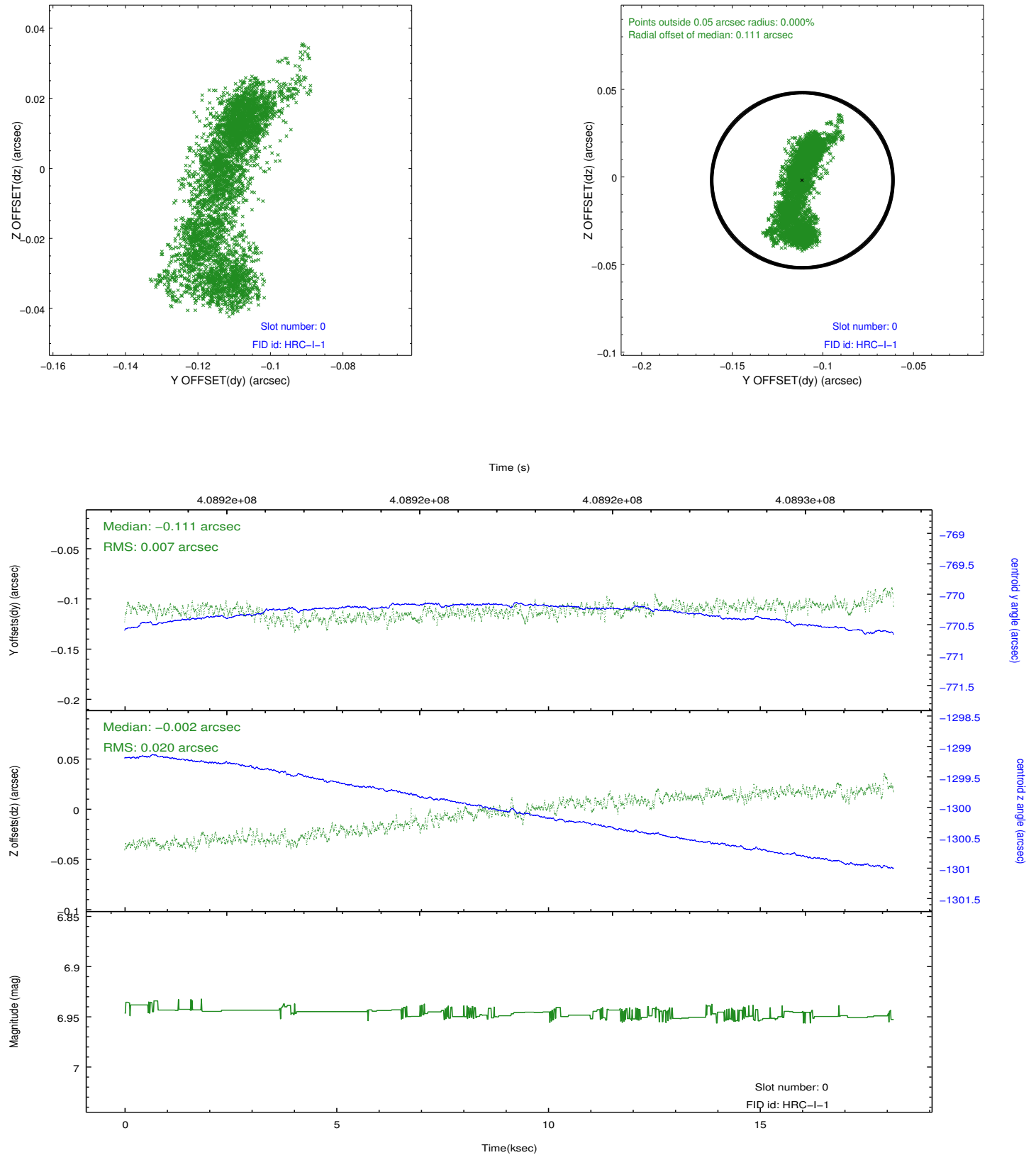


## 2.4.5 Slot 7

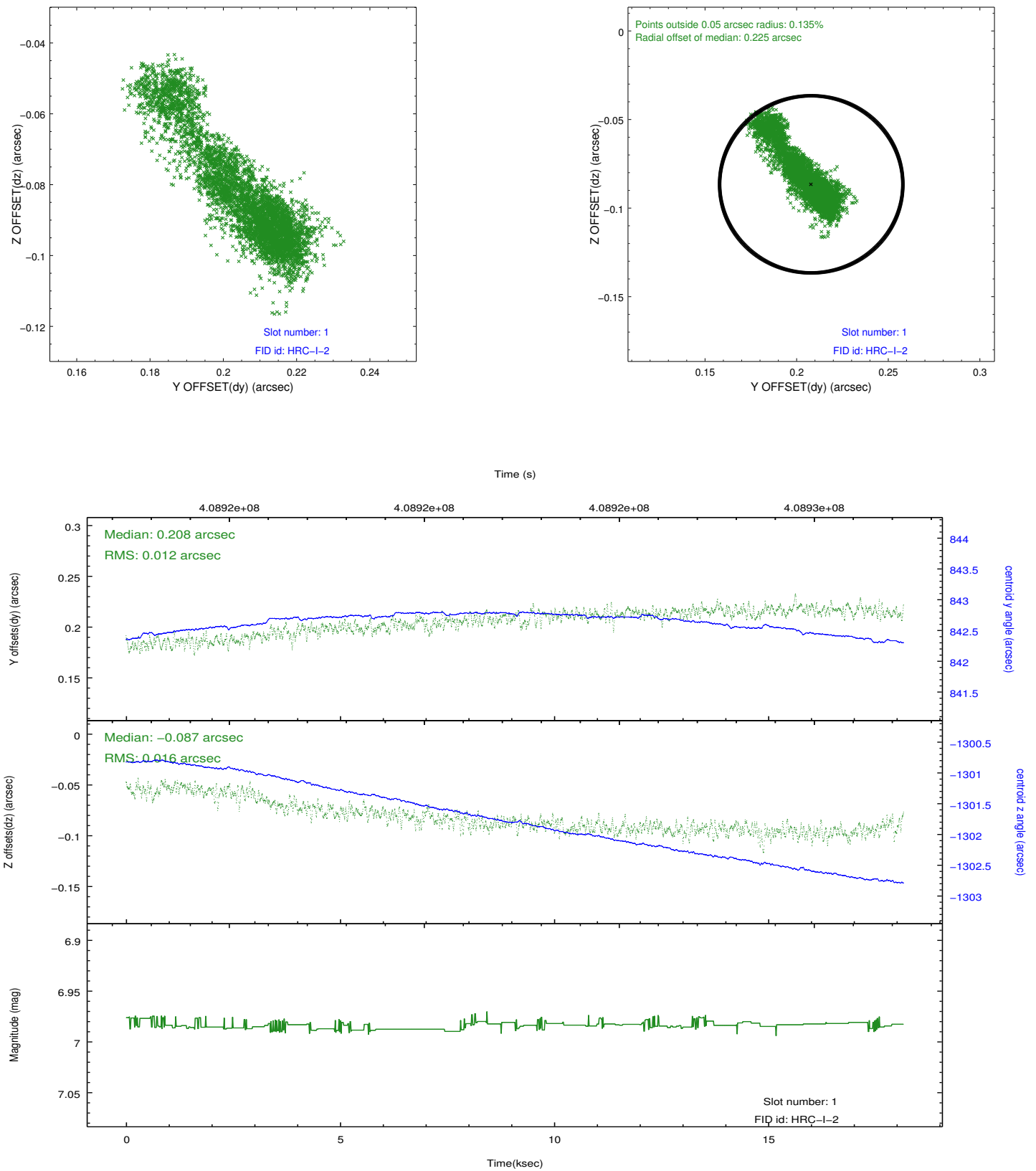


## 2.5 FID Slots

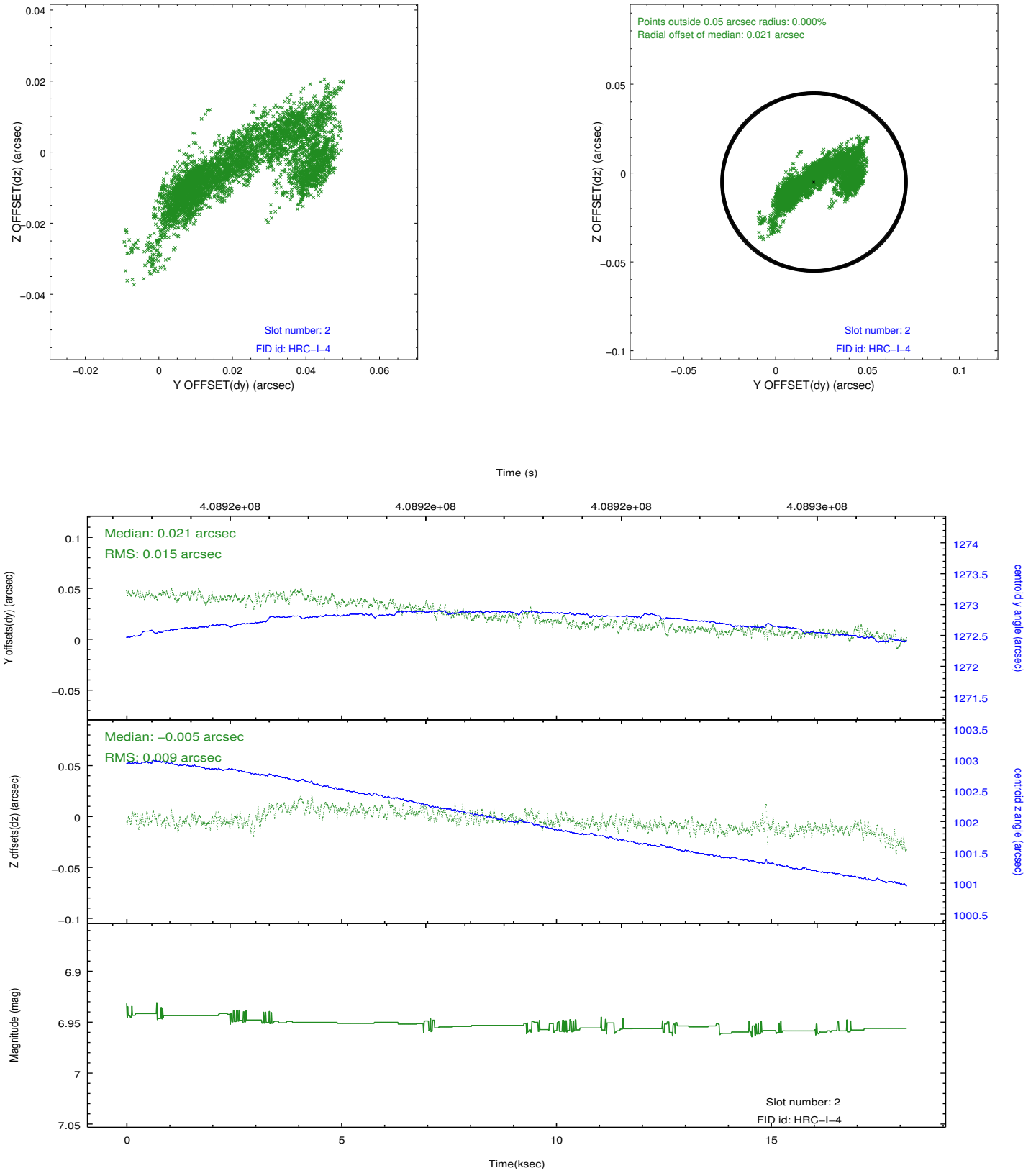
### 2.5.1 Slot 0



## 2.5.2 Slot 1



### 2.5.3 Slot 2



## A Summary

### A.1 Status

V&V Scientist	Beth Sundheim
V&V Date (YYYY-MM-DD)	2012.07.17
V&V Edition	1
V&V Disposition and Status	OK
V&V Charge Time	18.160182186902

### A.2 Comments