

V&V Reference Report

L2 ASCDS Version : 8.4.3

Observation 13025 - L2 Version 4
Chandra X-Ray Center

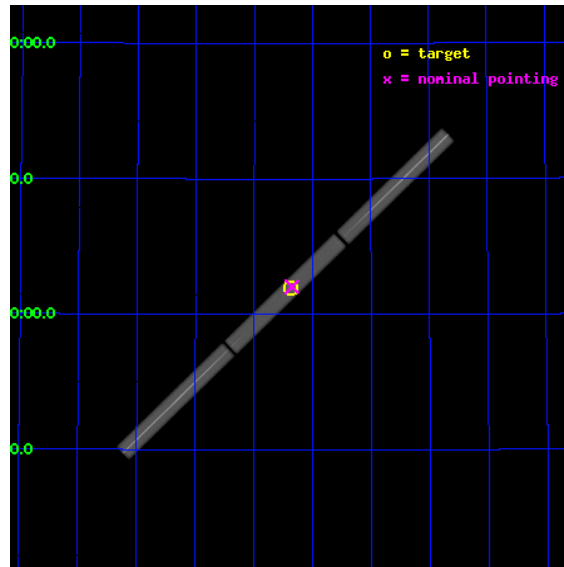
L2 Processing Date : Aug 9 2012

Contents

1	Front	2
2	OBI	3
2.1	OBI	3
2.1.1	Images	3
2.1.2	Parameters	4
2.1.3	Events	4
2.2	Compared Parameters	5
2.3	Aspect	6
2.4	Star Slots	9
2.4.1	Slot 3	9
2.4.2	Slot 4	10
2.4.3	Slot 5	11
2.4.4	Slot 6	12
2.4.5	Slot 7	13
2.5	FID Slots	14
2.5.1	Slot 0	14
2.5.2	Slot 1	15
2.5.3	Slot 2	16
3	Gratings	17
3.1	LETG Arm	17
A	Summary	19
A.1	Status	19
A.2	Comments	19

1 Front

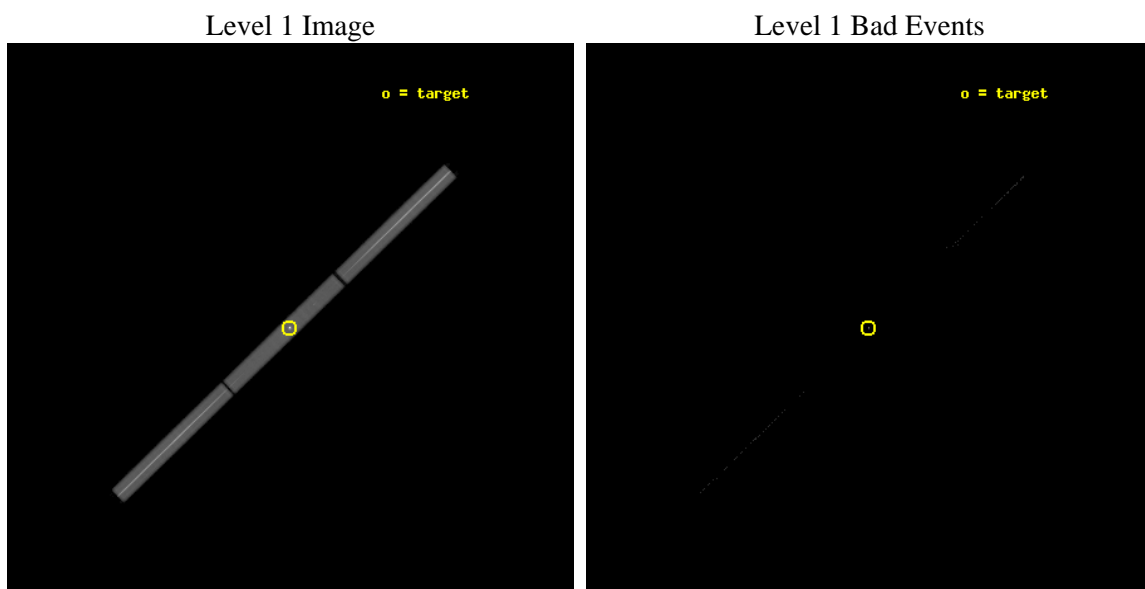
seq_num	290944	Sequence number
obs_id	13025	Observation id
title	AO-12 Calibration Observations of HZ43	Proposal title
observer	Dr. CXC Calibration	Principal investigator
object	HZ43	Source name
ra_targ	199.092083	Observer's specified target RA [deg]
dec_targ	29.099	Observer's specified target Dec [deg]
ra_nom	199.08821349843	Nominal RA [deg]
dec_nom	29.102401091936	Nominal Dec [deg]
roll_nom	135.89807394324	Nominal Roll [deg]
revision	4	Processing version of data
ontime	20145.351043522	[s]
livetime	19918.599372565	Ontime multiplied by DTCOR
l2events	2212968	Number of level 2 events



2 OBI

2.1 OBI

2.1.1 Images



2.1.2 Parameters

obi_num	0	Obi number	sched_exp_time	20000.000000	[s] Scheduled observation exposure time
ascdsver	8.4.5	Processing system revision	ontime	20145.351043522	[s]
caldsver	4.5.1.1	 	l1events	2784117	Number of level 1 events
date	2012-08-09T22:47:56	Date and time of file creation			
revision	4	Processing version of data			

2.1.3 Events

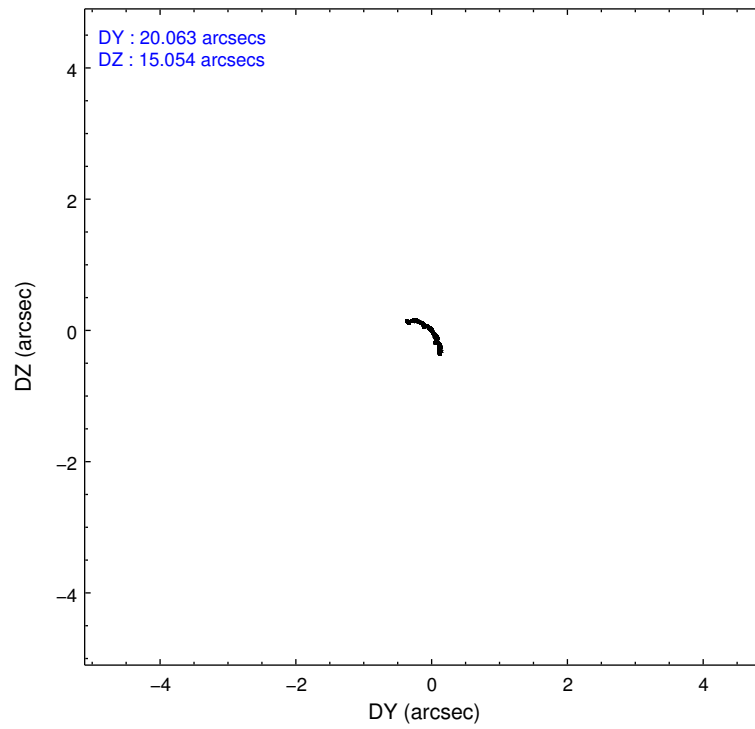
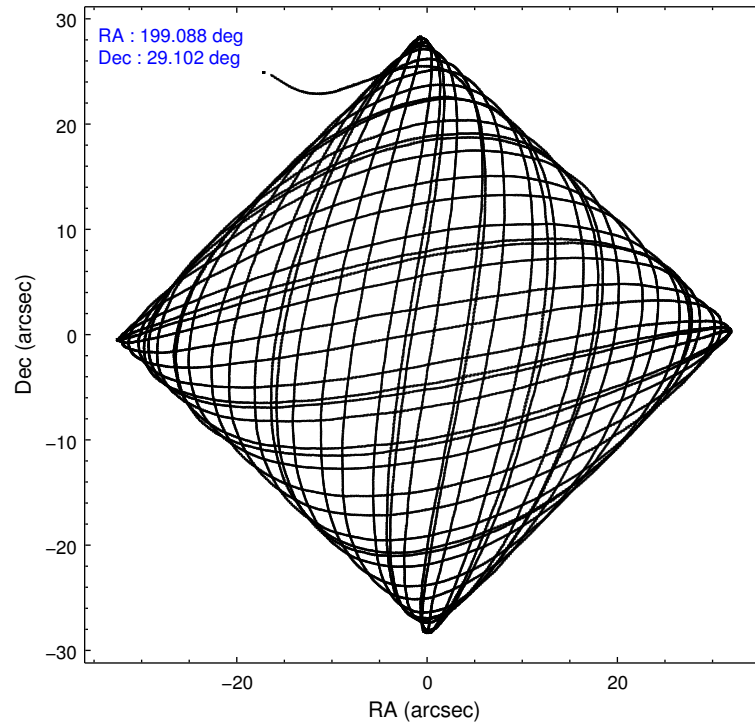
Level 1 Events

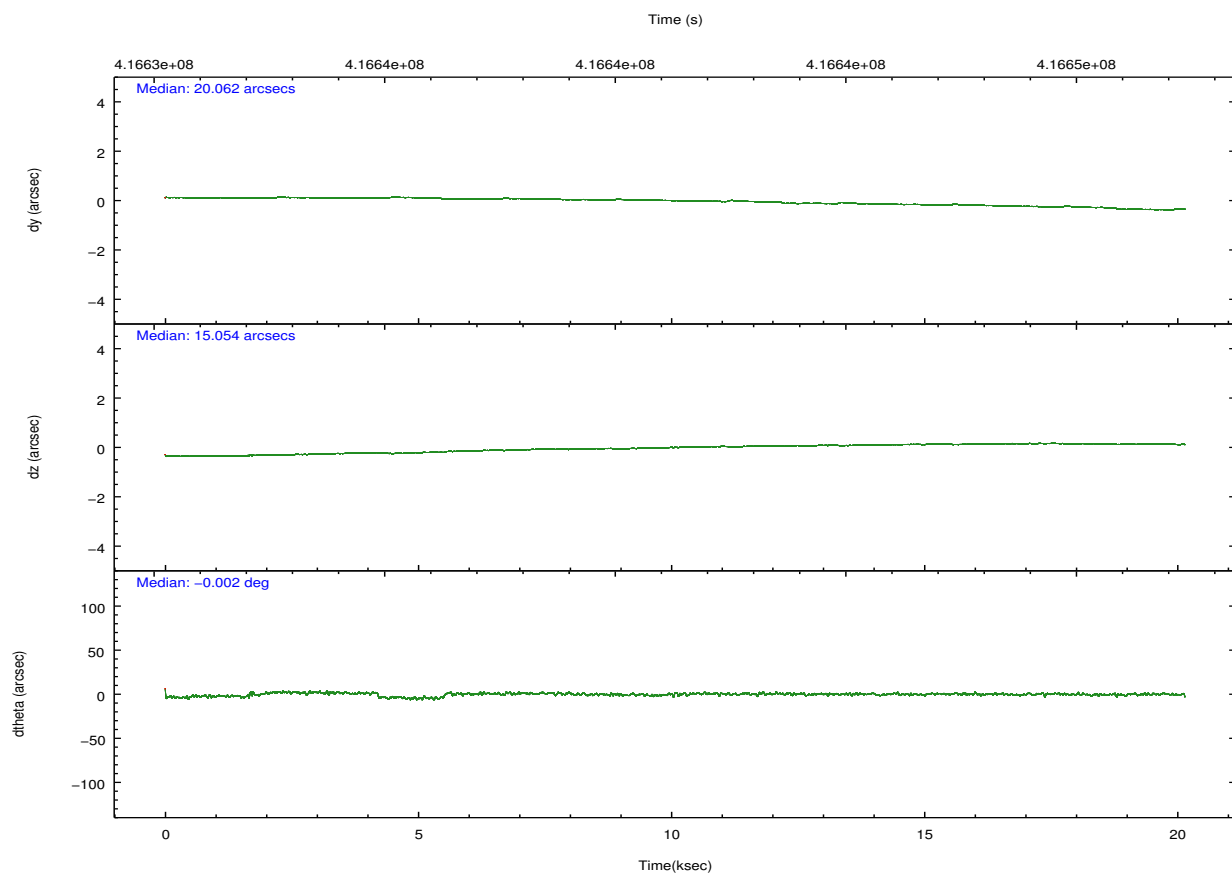
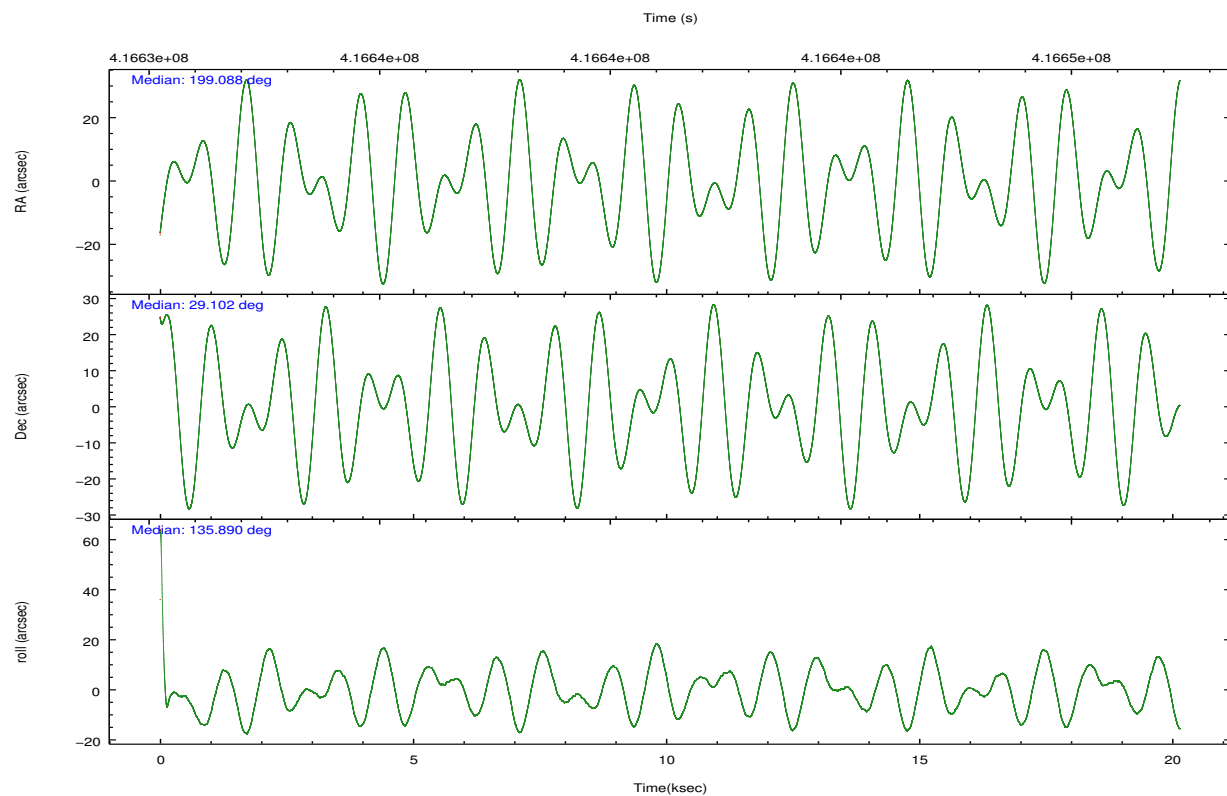
	segment 1	segment 2	segment 3
level 1 events	955379	857553	971185
rejected events	41191	40578	41370
rejected %	4%	4%	4%

2.2 Compared Parameters

Parameter	Planned	Actual	Parameter	Planned	Actual
Instrument	HRC	HRC	Obspar format version number	7	7
Detector	HRC-S	HRC-S	Obspar file type	PREDICTED	ACTUAL
Grating	LETG	LETG	Obspar update status	NONE	UPDATED
Data mode	OBSERVING	OBSERVING			
Observation mode	POINTING	POINTING			
[deg] Pointing RA	199.120442	199.0882134984342			
[deg] Pointing Dec	29.096768	29.10240109193628			
[deg] Pointing Roll	135.815015	135.898073943243			
[mm] SIM focus pos	-1.429586	-1.428180813131781			
[mm] SIM defocus	0.1037507710433287	0.1051558262725154			
[mm] SIM translation stage pos	250.455976	250.466033080201			
[mm] SIM translation stage offset	0	-0.01005468664627074			
[s] Observation start time (MET)	416631372.184000	416630072.46636			
Observation start date	2011-03-16T02:55:06	2011-03-16T02:34:32			
[s] Observation end time (MET)	416651372.184000	416652089.4675			
Observation end date	2011-03-16T08:28:26	2011-03-16T08:41:29			

2.3 Aspect



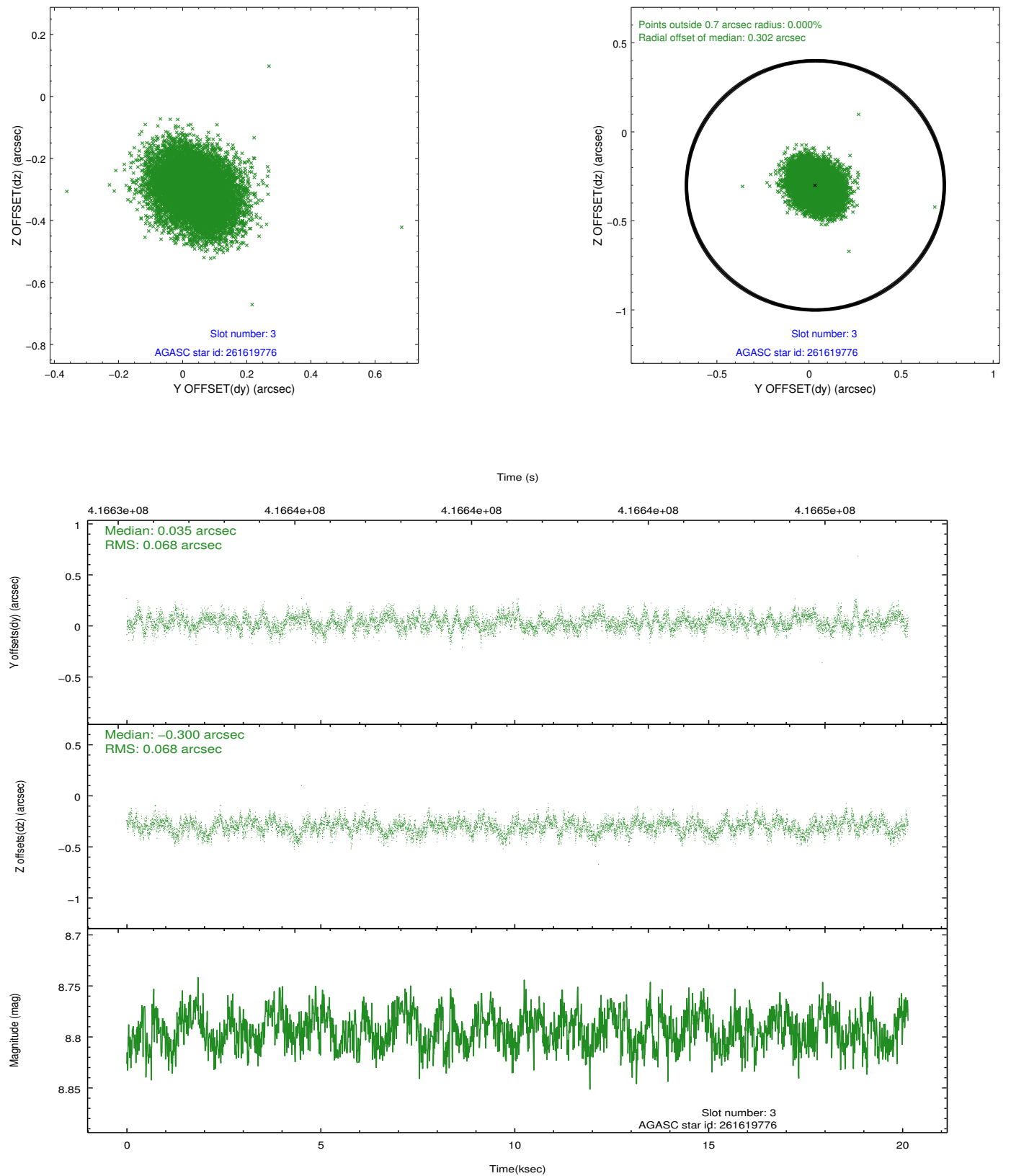


Slot Statistics

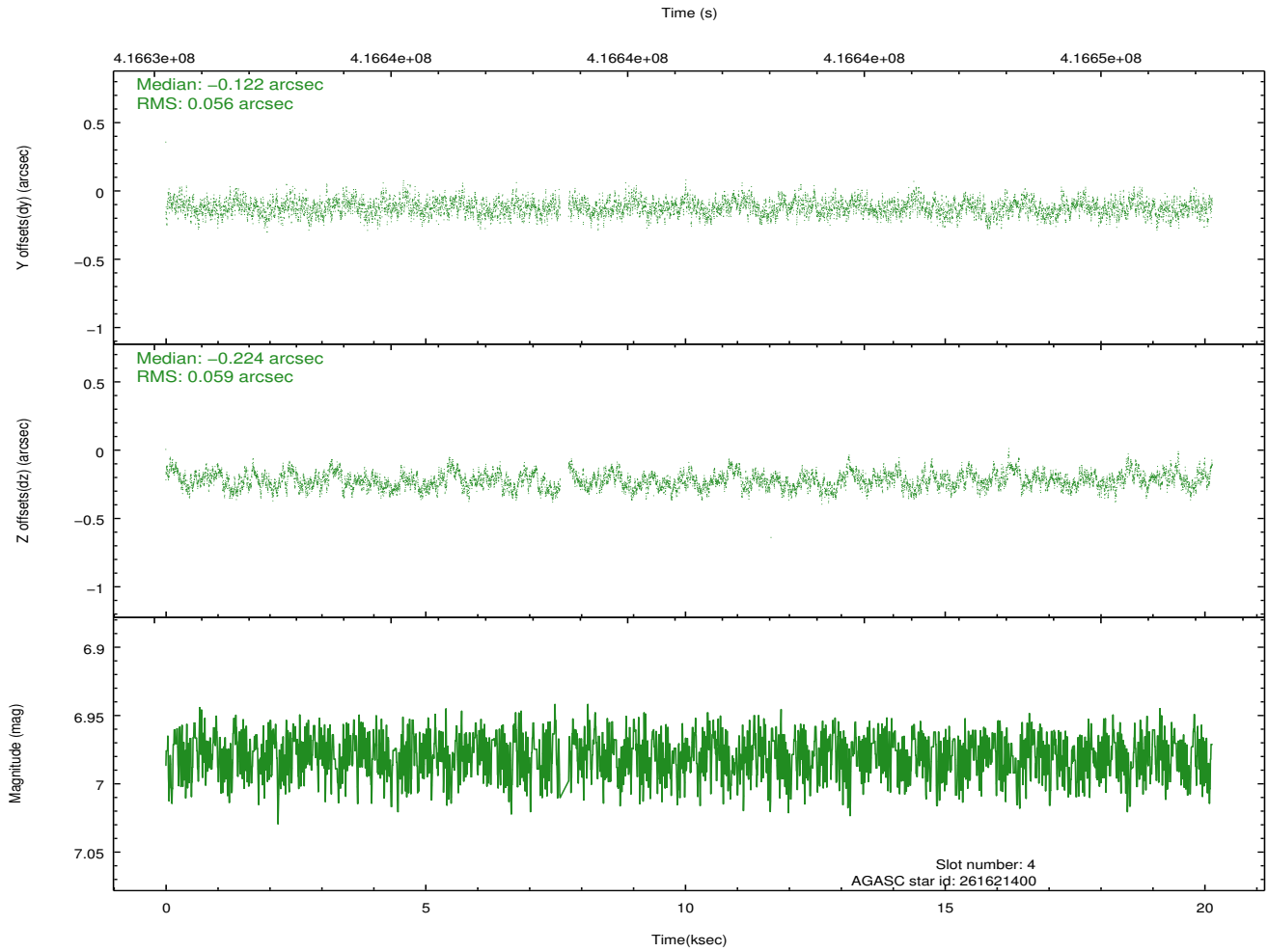
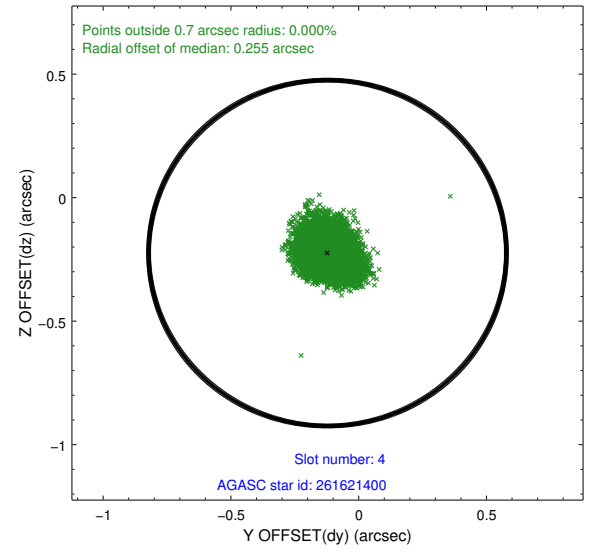
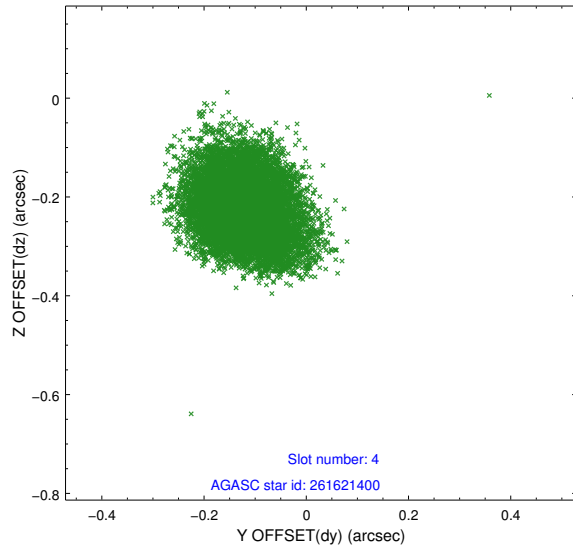
slot	status	id	mag	n_pts	med_dy	med_dz	dr1	dr2	ra	dec	mean_y	mean_z
0	FID	HRC-S-1	6.98	4914	0.012	-0.244	0.007	0.012	0.000000	0.000000	-1174.64	-463.95
1	FID	HRC-S-3	7.00	4914	0.098	-0.004	0.009	0.016	0.000000	0.000000	-1177.50	565.73
2	FID	HRC-S-4	6.91	4914	0.277	-0.050	0.006	0.012	0.000000	0.000000	1223.66	568.41
3	GUIDE	261619776	8.79	9810	0.035	-0.300	0.103	0.166	198.654383	29.401174	1813.54	230.93
4	GUIDE	261621400	6.98	9751	-0.122	-0.224	0.088	0.139	198.901600	28.741982	-393.80	1397.05
5	GUIDE	261626376	9.68	9792	0.108	0.087	0.203	0.320	198.947288	29.347445	1019.62	-267.93
6	GUIDE	261629720	8.12	9828	0.161	0.246	0.079	0.126	199.236176	29.044452	-391.79	-118.58
7	GUIDE	261623040	9.13	9795	-0.183	0.188	0.125	0.210	198.792686	29.757643	2393.98	-992.52

2.4 Star Slots

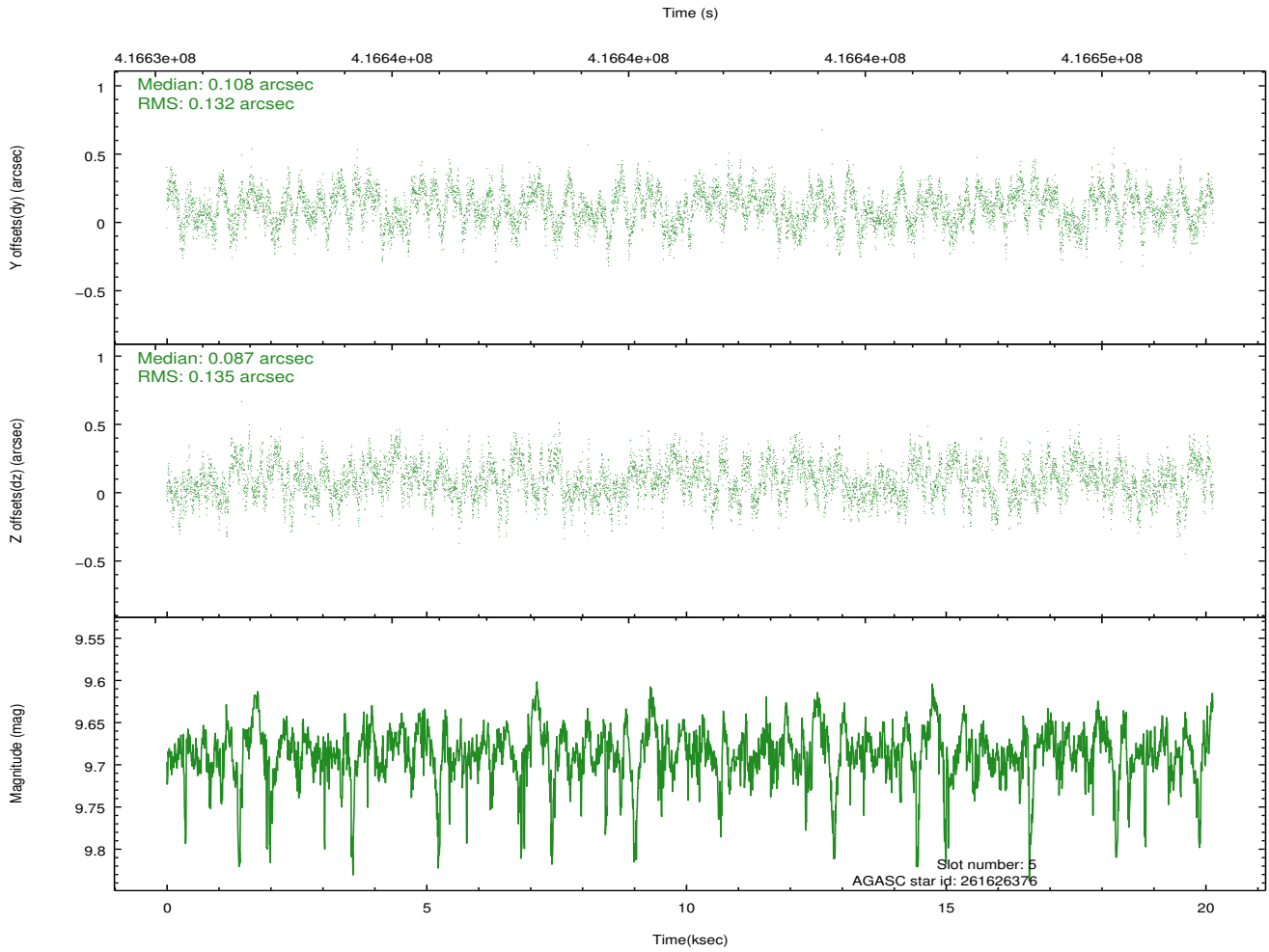
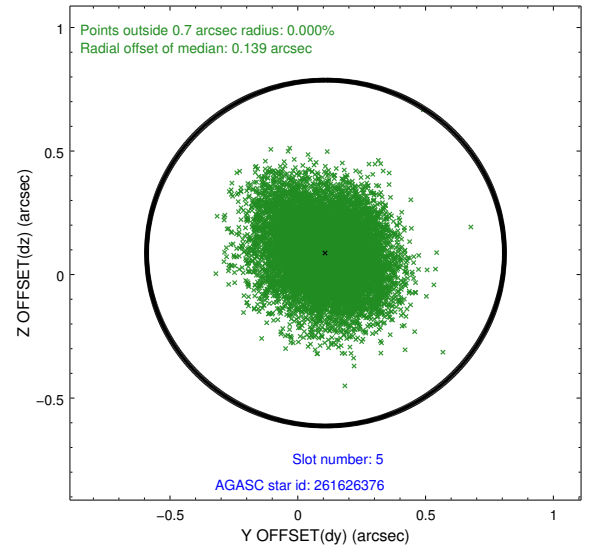
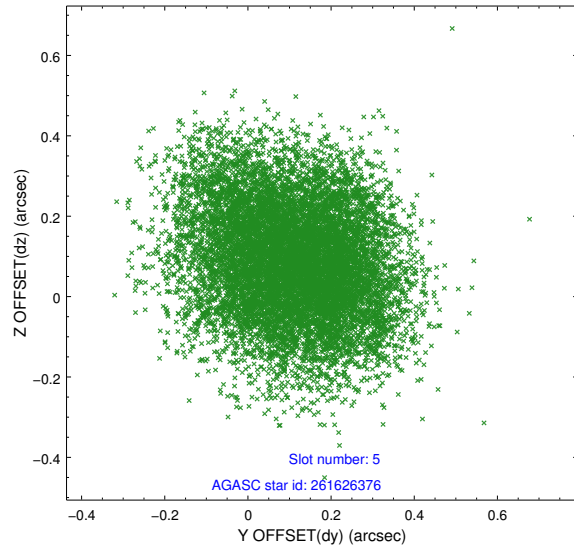
2.4.1 Slot 3



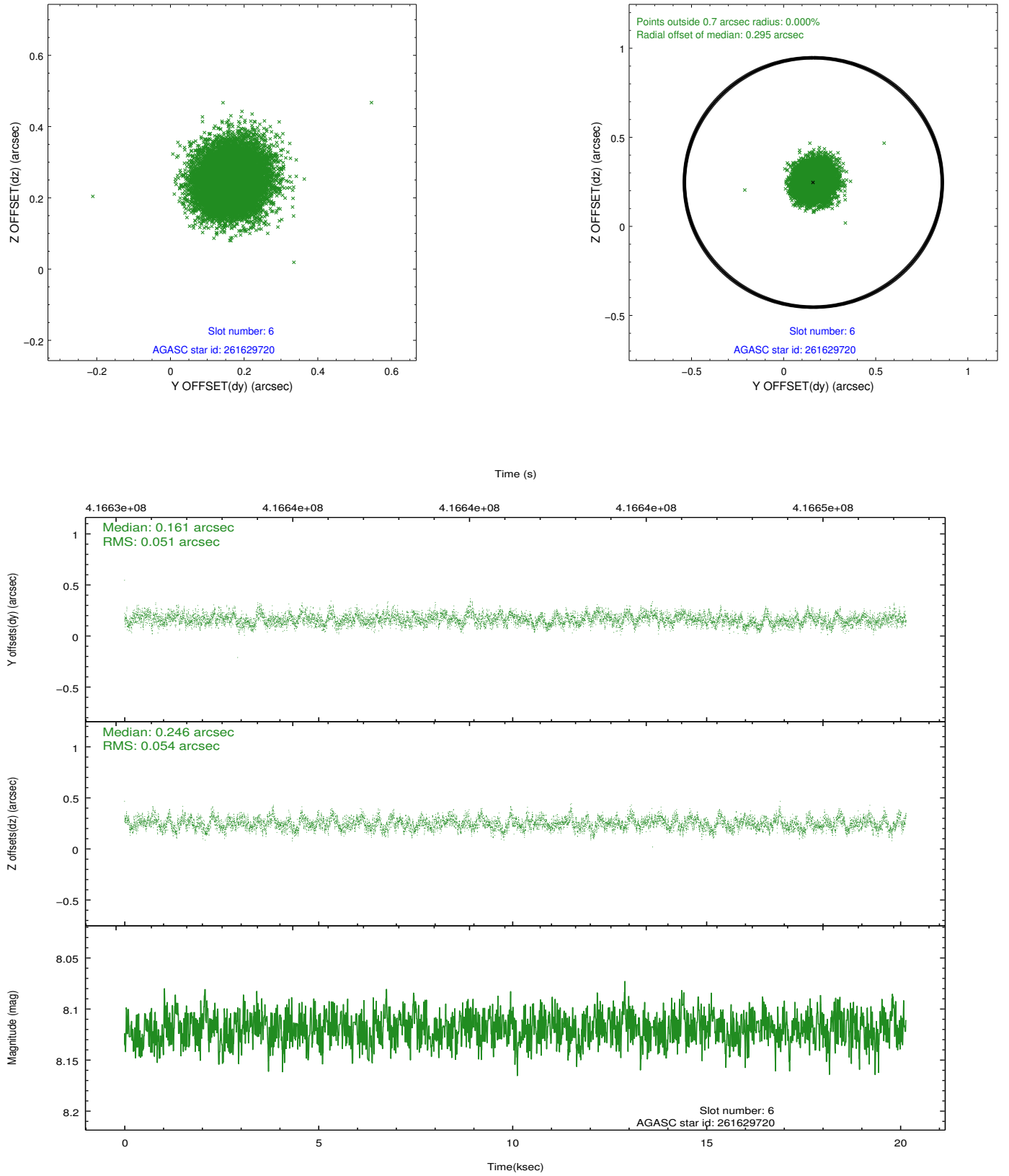
2.4.2 Slot 4



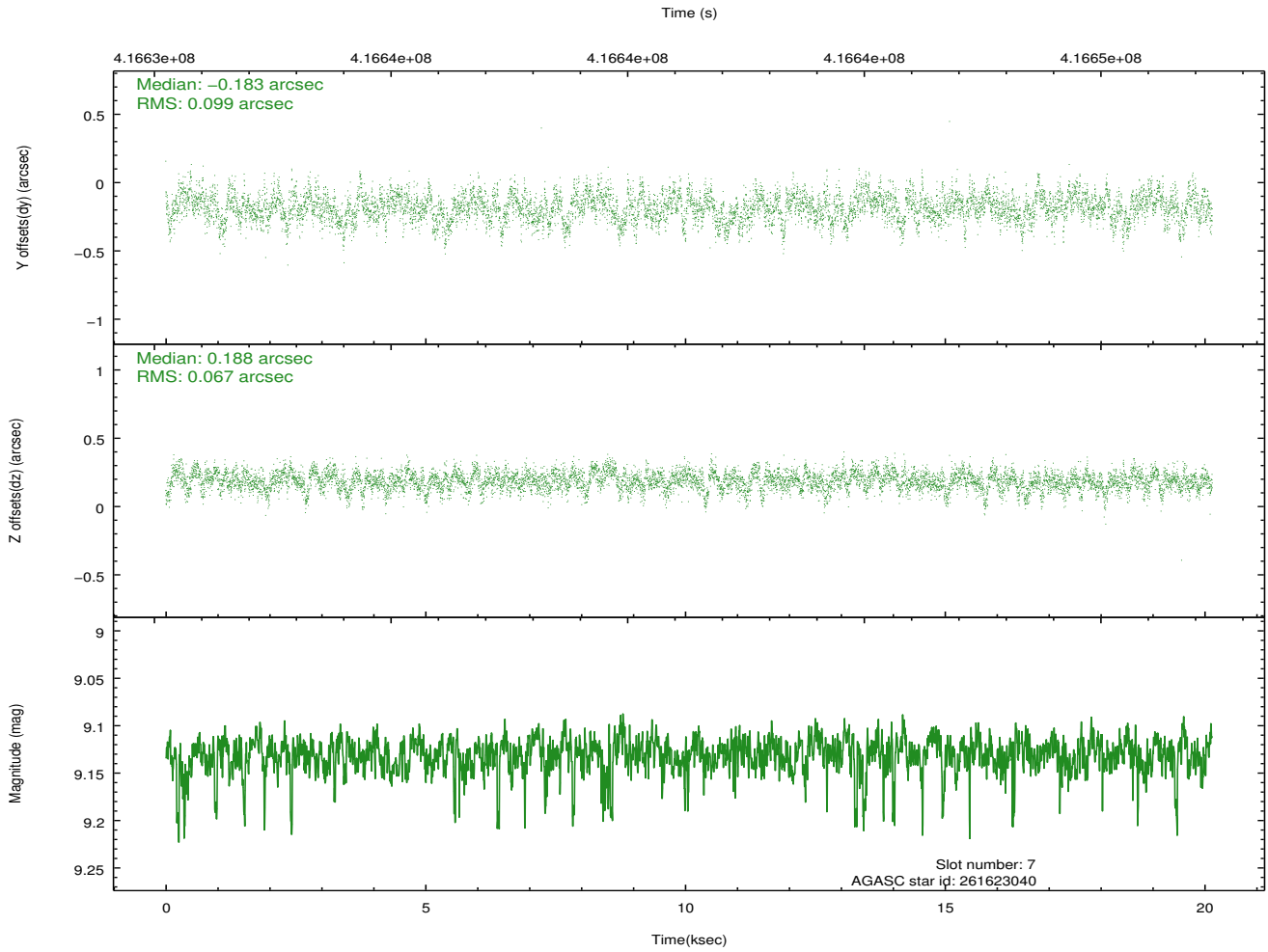
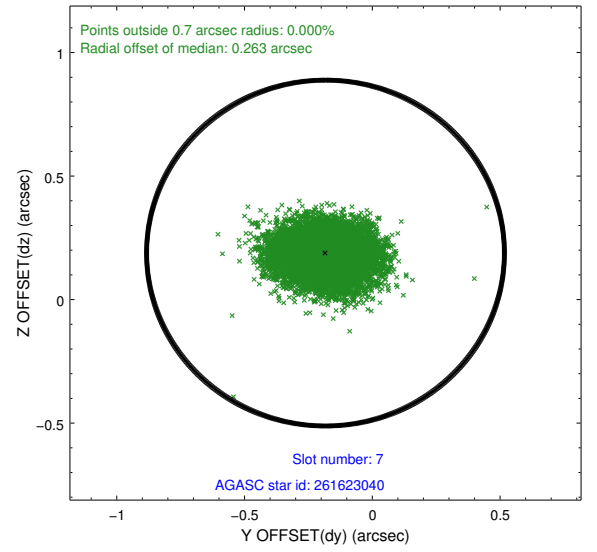
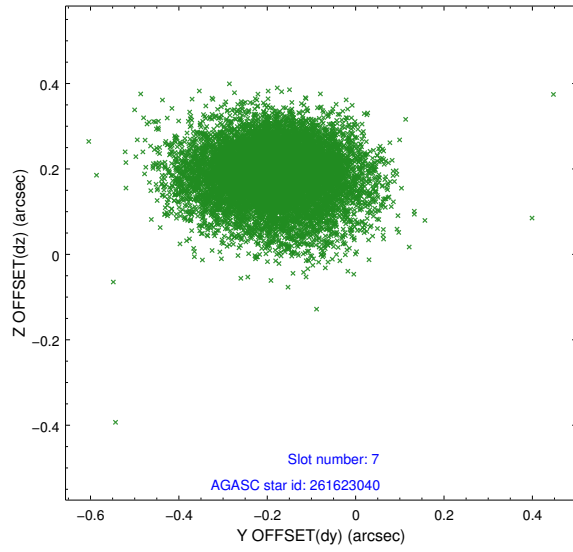
2.4.3 Slot 5



2.4.4 Slot 6

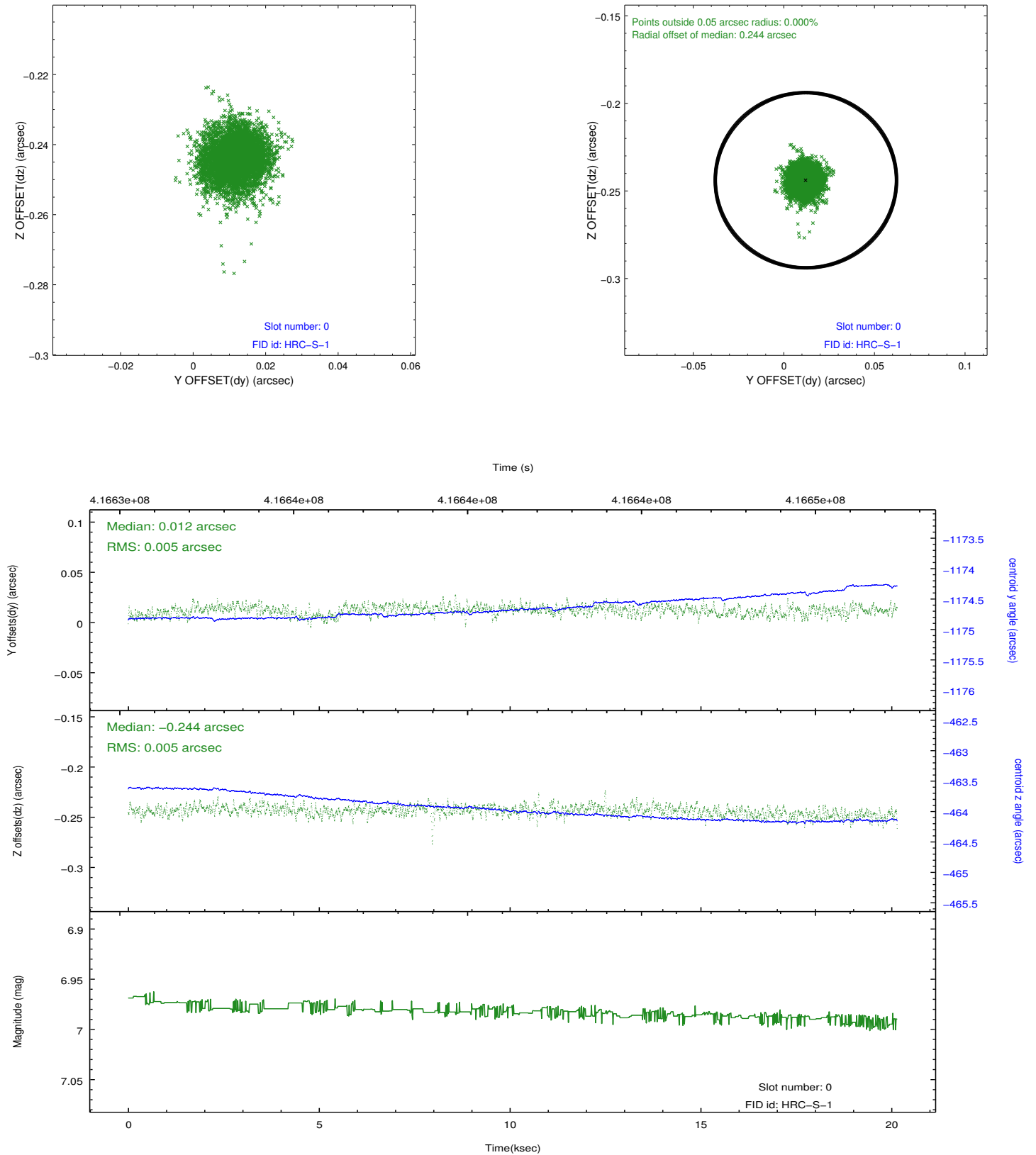


2.4.5 Slot 7

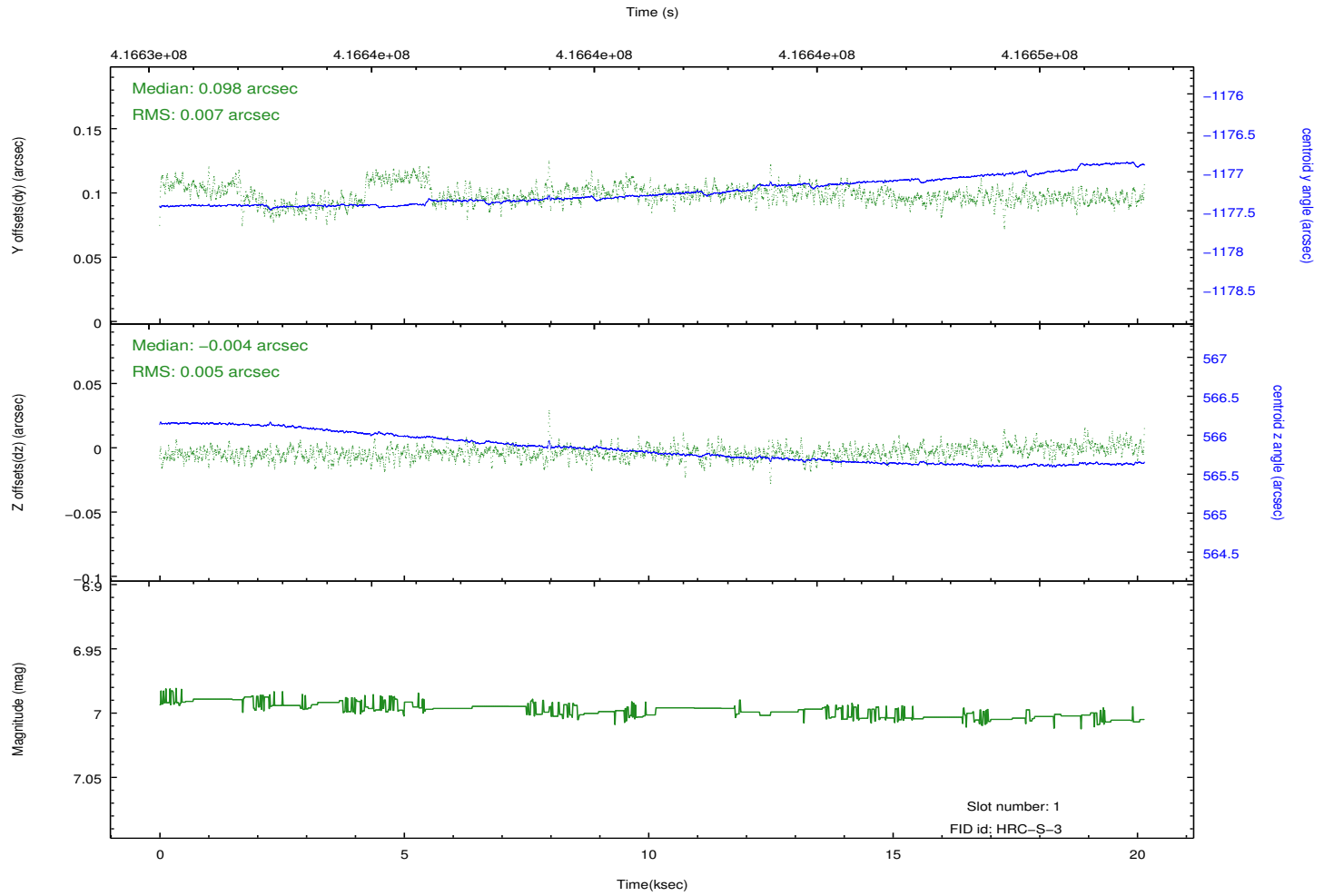
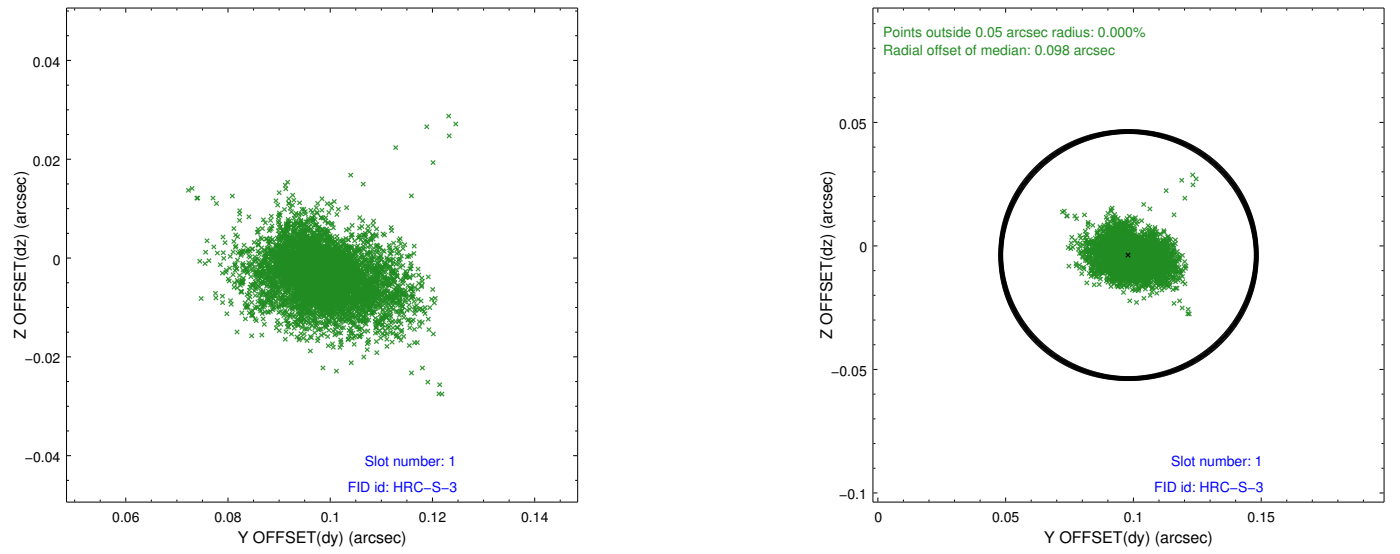


2.5 FID Slots

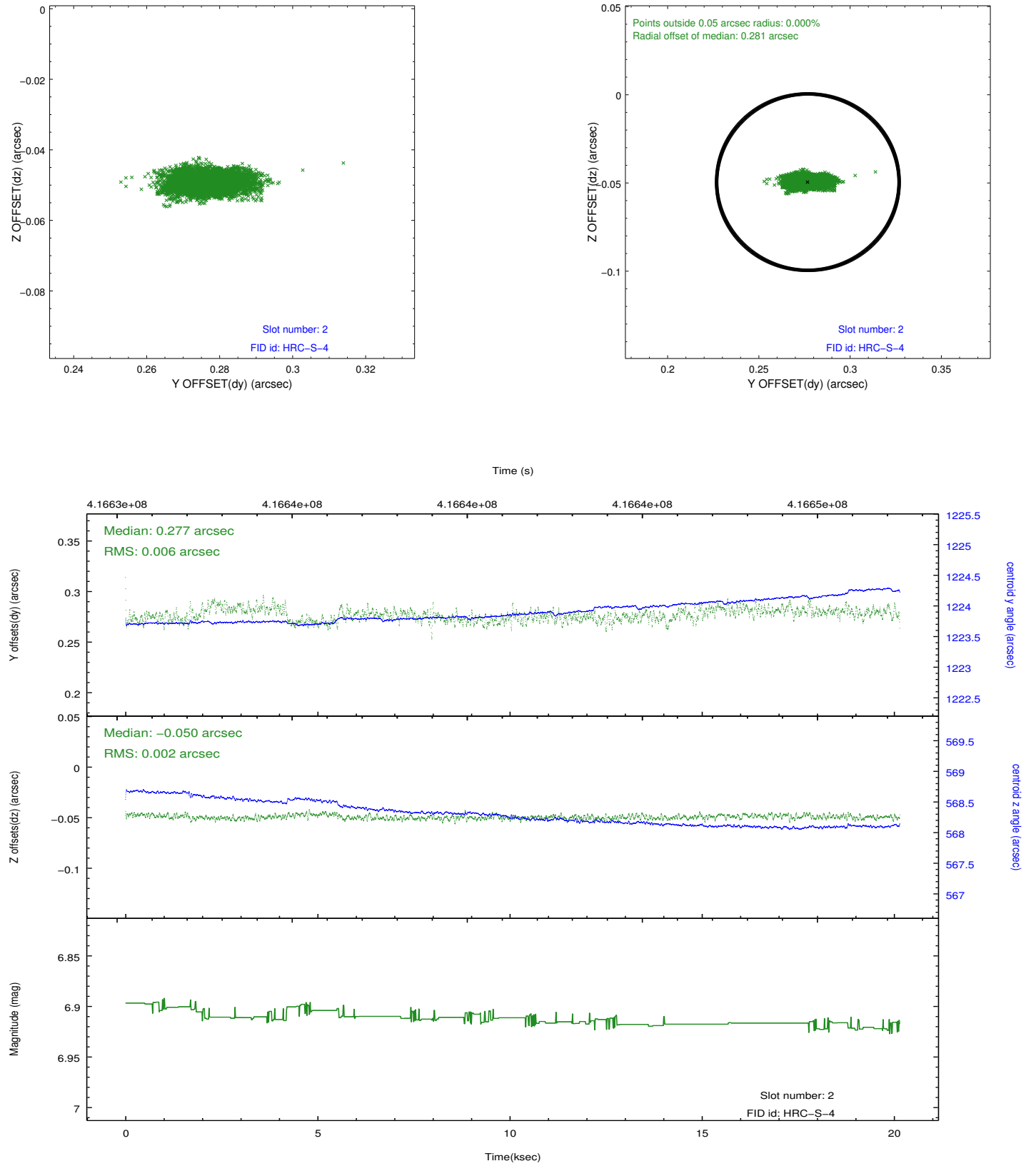
2.5.1 Slot 0



2.5.2 Slot 1

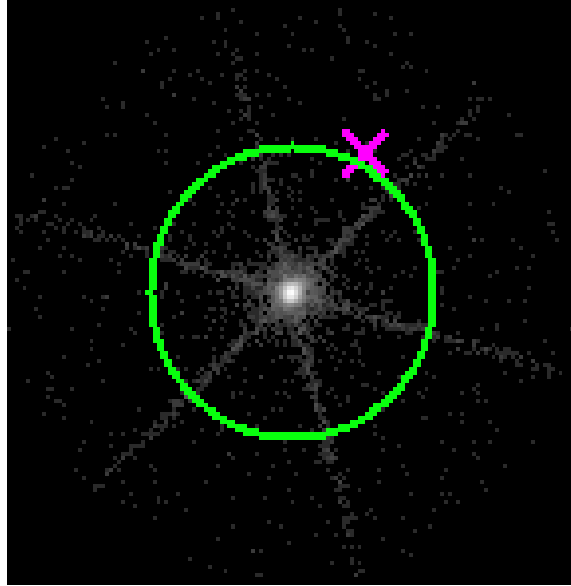


2.5.3 Slot 2

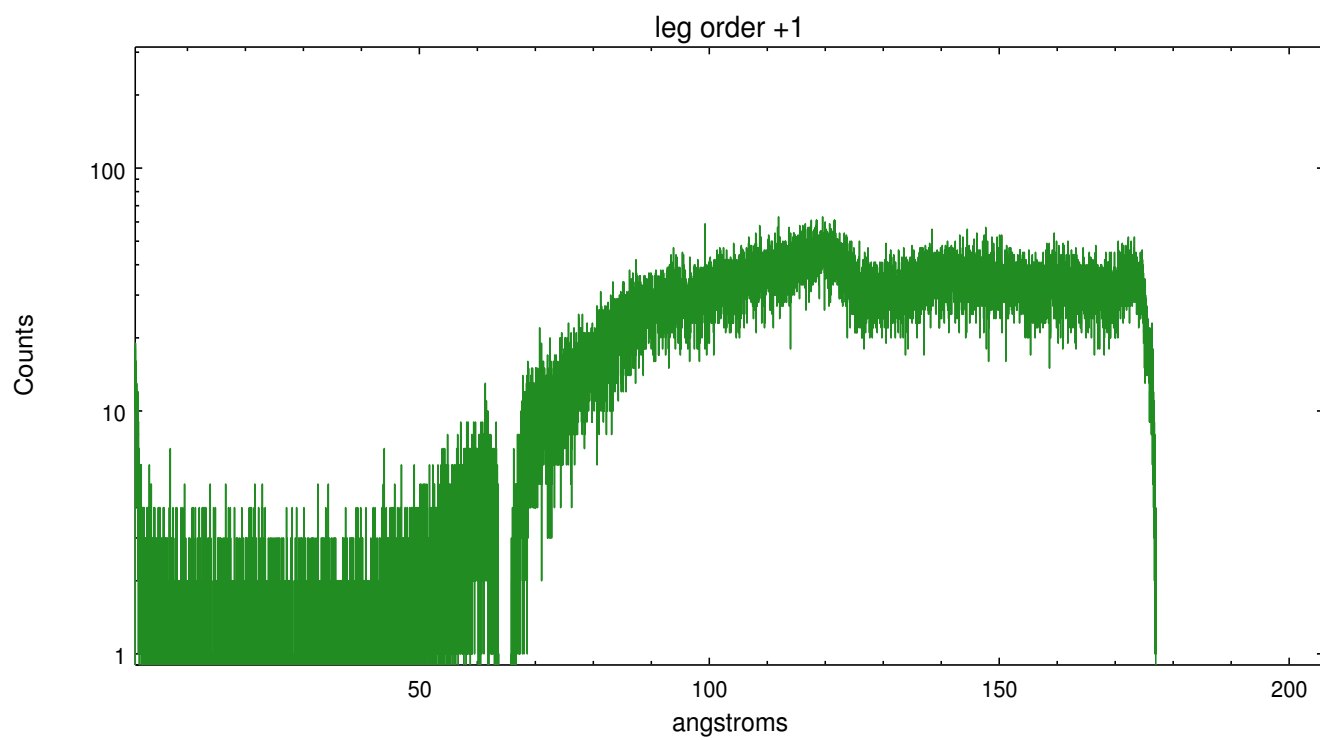
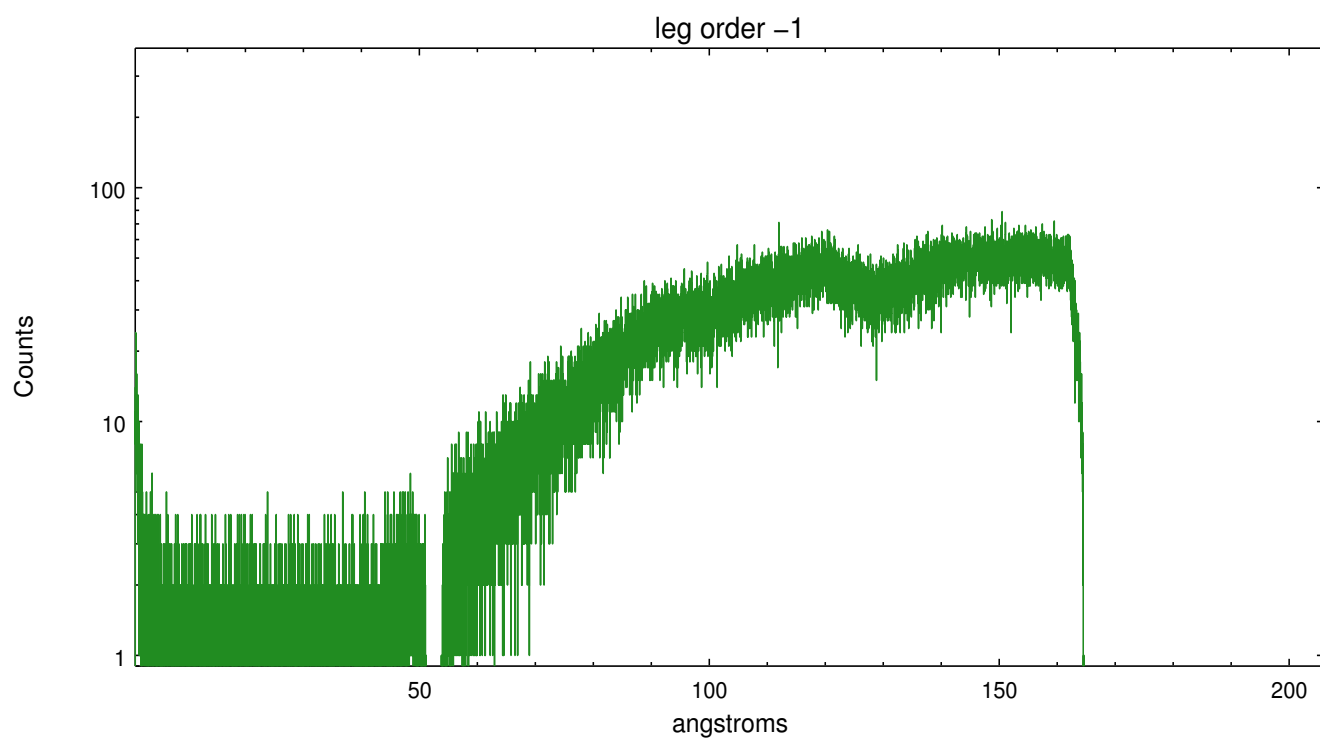


3 Gratings

3.1 LETG Arm



LETG Zero Order



A Summary

A.1 Status

V&V Scientist	Joy Nichols
V&V Date (YYYY-MM-DD)	2012.08.10
V&V Edition	1
V&V Disposition and Status	OK
V&V Charge Time	20.145351043582

A.2 Comments