

# V&V Reference Report

## L2 ASCDS Version : 8.4.4

Observation 10901 - L2 Version 2  
Chandra X-Ray Center

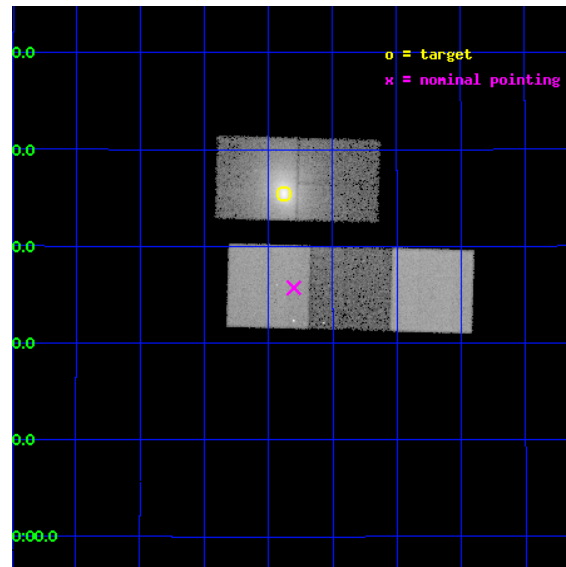
L2 Processing Date : Jun 4 2012

## Contents

<b>1</b>	<b>Front</b>	<b>2</b>
<b>2</b>	<b>OBI</b>	<b>3</b>
2.1	OBI . . . . .	3
2.1.1	Images . . . . .	3
2.1.2	Bias . . . . .	3
2.1.3	Parameters . . . . .	4
2.1.4	Events . . . . .	4
2.2	Compared Parameters . . . . .	5
2.3	Aspect . . . . .	6
2.4	Star Slots . . . . .	9
2.4.1	Slot 3 . . . . .	9
2.4.2	Slot 4 . . . . .	10
2.4.3	Slot 5 . . . . .	11
2.4.4	Slot 6 . . . . .	12
2.4.5	Slot 7 . . . . .	13
2.5	FID Slots . . . . .	14
2.5.1	Slot 0 . . . . .	14
2.5.2	Slot 1 . . . . .	15
2.5.3	Slot 2 . . . . .	16
<b>A</b>	<b>Summary</b>	<b>17</b>
A.1	Status . . . . .	17
A.2	Comments . . . . .	17

# 1 Front

seq_num	890041	Sequence number
obs_id	10901	Observation id
title	Mapping the Contamination on the ACIS Filter with Abell 1795	Propo
observer	Dr. CXC Calibration	Principal investigator
object	Abell 1795	Source name
dtcycle	0	&#160
cycle	P	events from which exps? Prim/Second/Both
ra_targ	207.219583	Observer's specified target RA [deg]
dec_targ	26.590833	Observer's specified target Dec [deg]
ra_nom	207.20074349343	Nominal RA [deg]
dec_nom	26.428643760361	Nominal Dec [deg]
roll_nom	181.54609694583	Nominal Roll [deg]
revision	2	Processing version of data
ontime	15672.47292614	Sum of GTIs [s]
livetime	15467.700529453	Livetime [s]
ontime2	15672.431945562	Sum of GTIs [s]
ontime3	15672.47292614	Sum of GTIs [s]
ontime5	15675.696006536	Sum of GTIs [s]
ontime6	15675.654976428	Sum of GTIs [s]
ontime7	15675.73704654	Sum of GTIs [s]
l2events	290201	Number of level 2 events

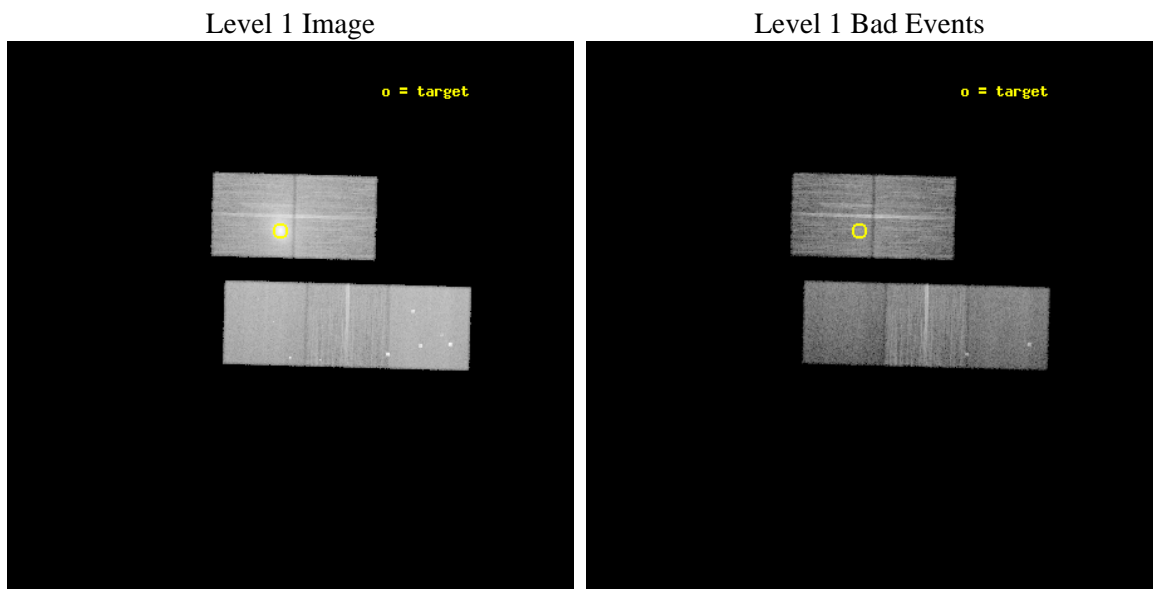




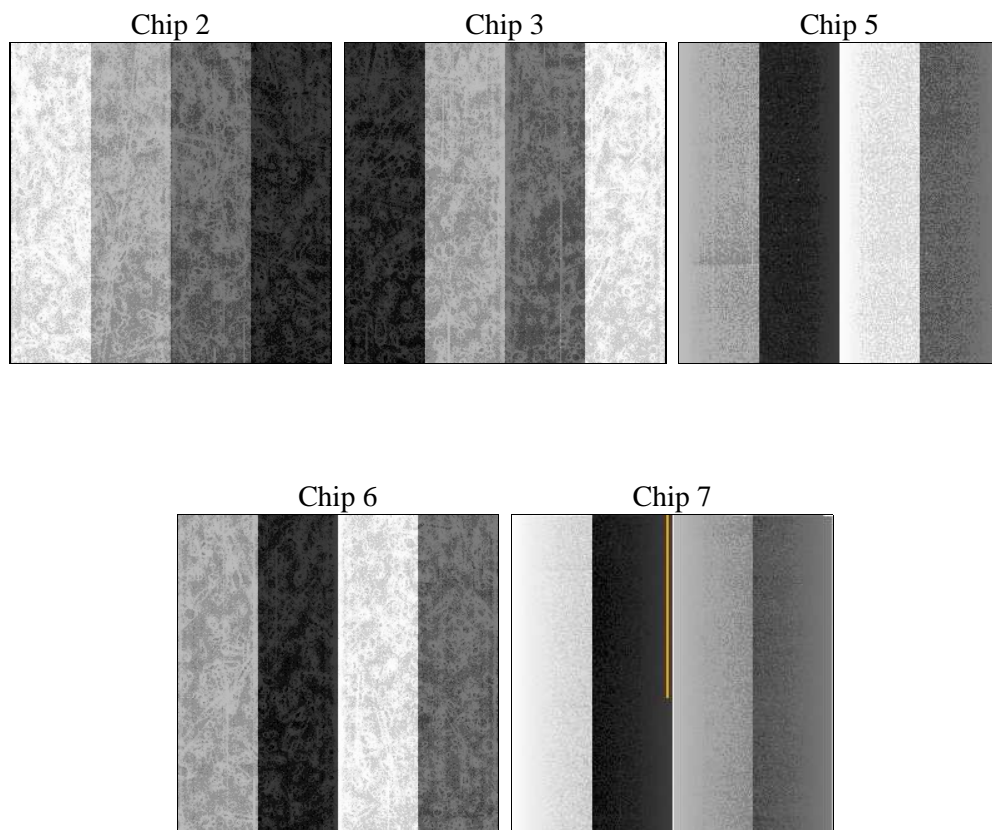
## 2 OBI

### 2.1 OBI

#### 2.1.1 Images



#### 2.1.2 Bias



### 2.1.3 Parameters

obi_num	0	Obi number	sched_exp_time	15902.000000	[s] Scheduled observation exposure time
ascdsver	8.4.4	Processing system revision	ontime	15672.47292614	Sum of GTIs [s]
caldsver	4.4.9	&#160	ontime2	15672.431945562	Sum of GTIs [s]
date	2012-06-04T15:08:17	Date and time of file creation	ontime3	15672.47292614	Sum of GTIs [s]
revision	2	Processing version of data	ontime5	15675.696006536	Sum of GTIs [s]
			ontime6	15675.654976428	Sum of GTIs [s]
			ontime7	15675.73704654	Sum of GTIs [s]
			l1events	862810	Number of level 1 events

### 2.1.4 Events

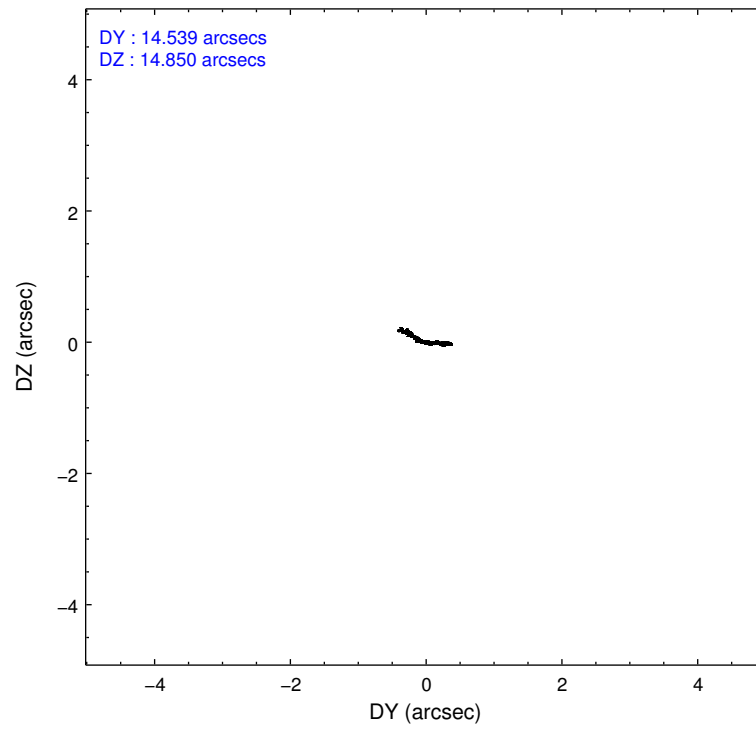
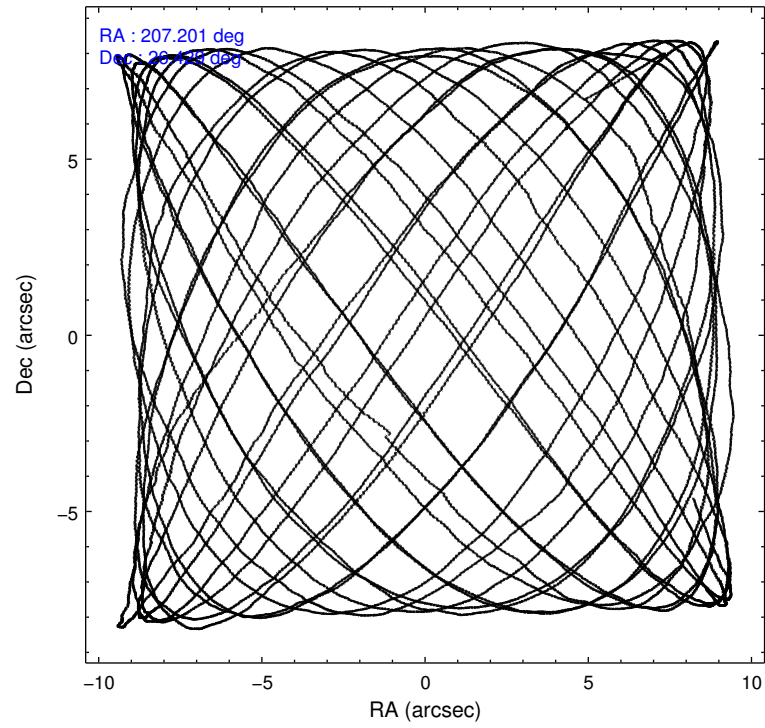
	ccd 2	ccd 3	ccd 5	ccd 6	ccd 7
level 1 events	152559	212405	196632	142007	159207
rejected events	125407	118481	98034	126359	84031
rejected %	82%	55%	49%	88%	52%

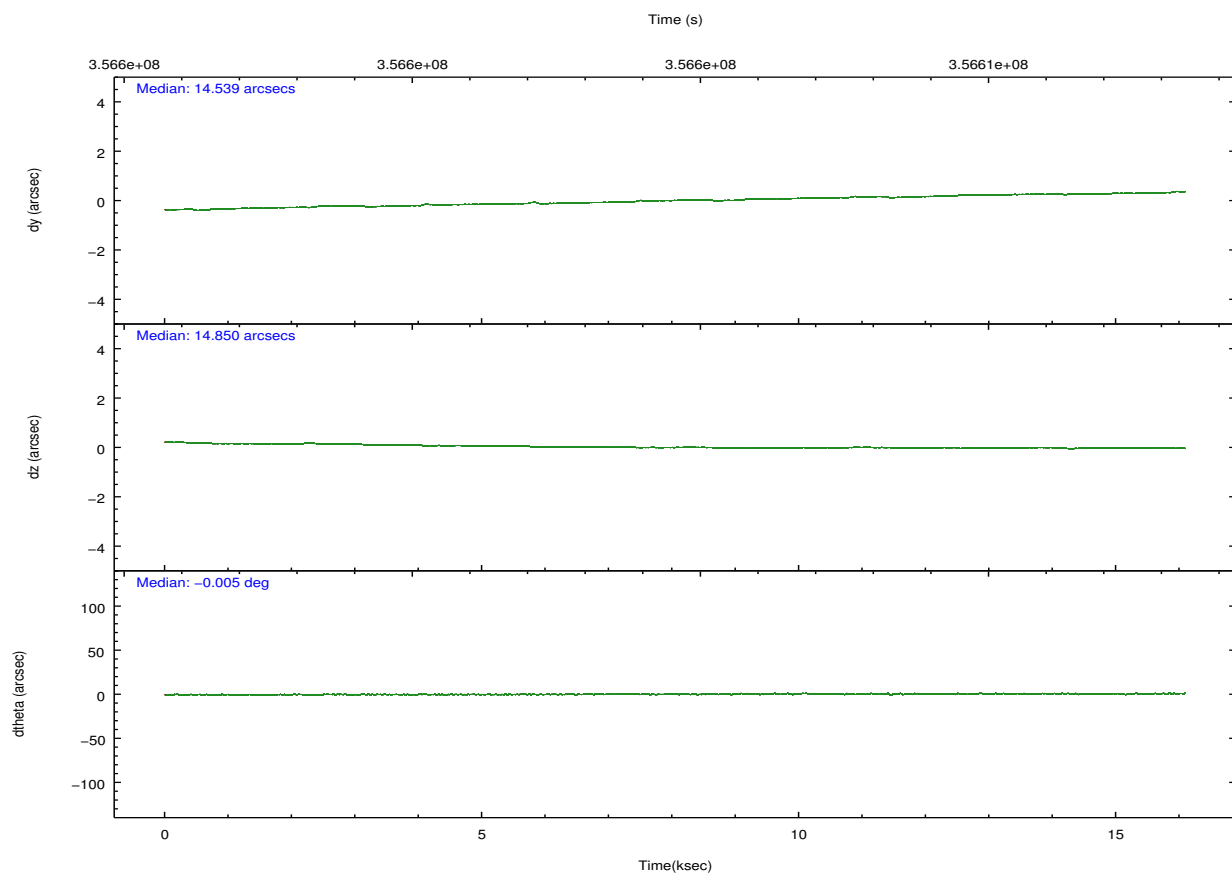
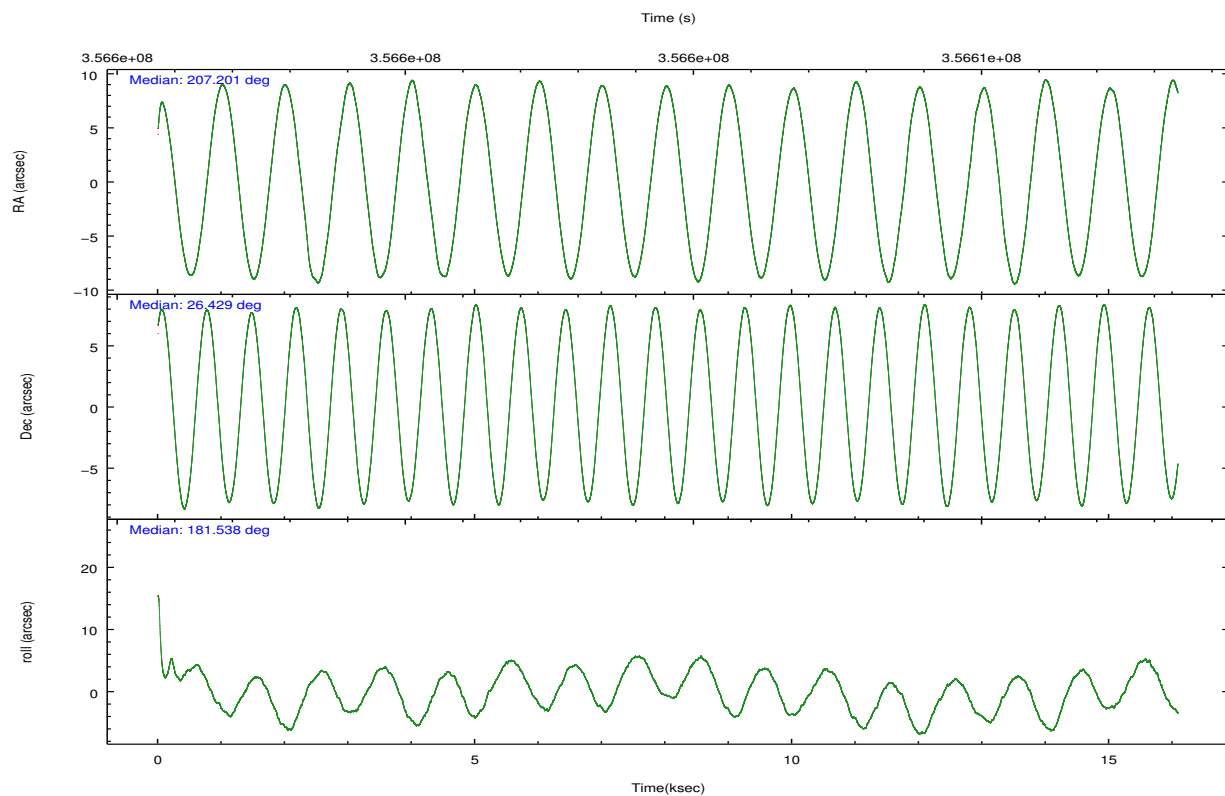
	ccd 2	ccd 3	ccd 5	ccd 6	ccd 7
grade 0 events	16155	71494	11290	6225	8176
	10%	33%	5%	4%	5%
grade 1 events	155	596	528	82	207
	0%	0%	0%	0%	0%
grade 2 events	4609	10635	29263	3210	15571
	3%	5%	14%	2%	9%
grade 3 events	1746	3695	4115	1525	6845
	1%	1%	2%	1%	4%
grade 4 events	1884	3721	3734	1525	6732
	1%	1%	1%	1%	4%
grade 5 events	4520	5758	15289	5711	15873
	2%	2%	7%	4%	9%
grade 6 events	2763	4400	50214	3165	37864
	1%	2%	25%	2%	23%
grade 7 events	120727	112106	82199	120564	67939
	79%	52%	41%	84%	42%

## 2.2 Compared Parameters

Parameter	Planned	Actual	Parameter	Planned	Actual
Instrument	ACIS	ACIS	Obspar format version number	7	7
Detector	ACIS-23567	ACIS-23567	Obspar file type	PREDICTED	ACTUAL
Grating	NONE	NONE	Obspar update status	NONE	UPDATED
Data mode	VFAINT	VFAINT	Number of optional ACIS chips dropped	0	0
Observation mode	POINTING	POINTING	On-chip summing requested	N	N
[deg] Pointing RA	207.226536	207.2007434934347	Subarray requested	NONE	NONE
[deg] Pointing Dec	26.443274	26.42864376036141	Alternating exposures requested	N	N
[deg] Pointing Roll	181.377982	181.5460969458317	[s] Primary exposure time	0.000000	3.1
[mm] SIM focus pos	-0.684267	-0.6828225247311905			
[mm] SIM defocus	0	0.001444936568705701			
[mm] SIM translation stage pos	-190.132523	-190.1425803651734			
[mm] SIM translation stage offset	0	0.01005778216563158			
[s] Observation start time (MET)	356596705.184000	356596329.35365			
Observation start date	2009-04-20T06:37:19	2009-04-20T06:32:09			
[s] Observation end time (MET)	356612607.184000	356612741.14197			
Observation end date	2009-04-20T11:02:21	2009-04-20T11:05:41			
Read mode	TIMED	TIMED			

## 2.3 Aspect



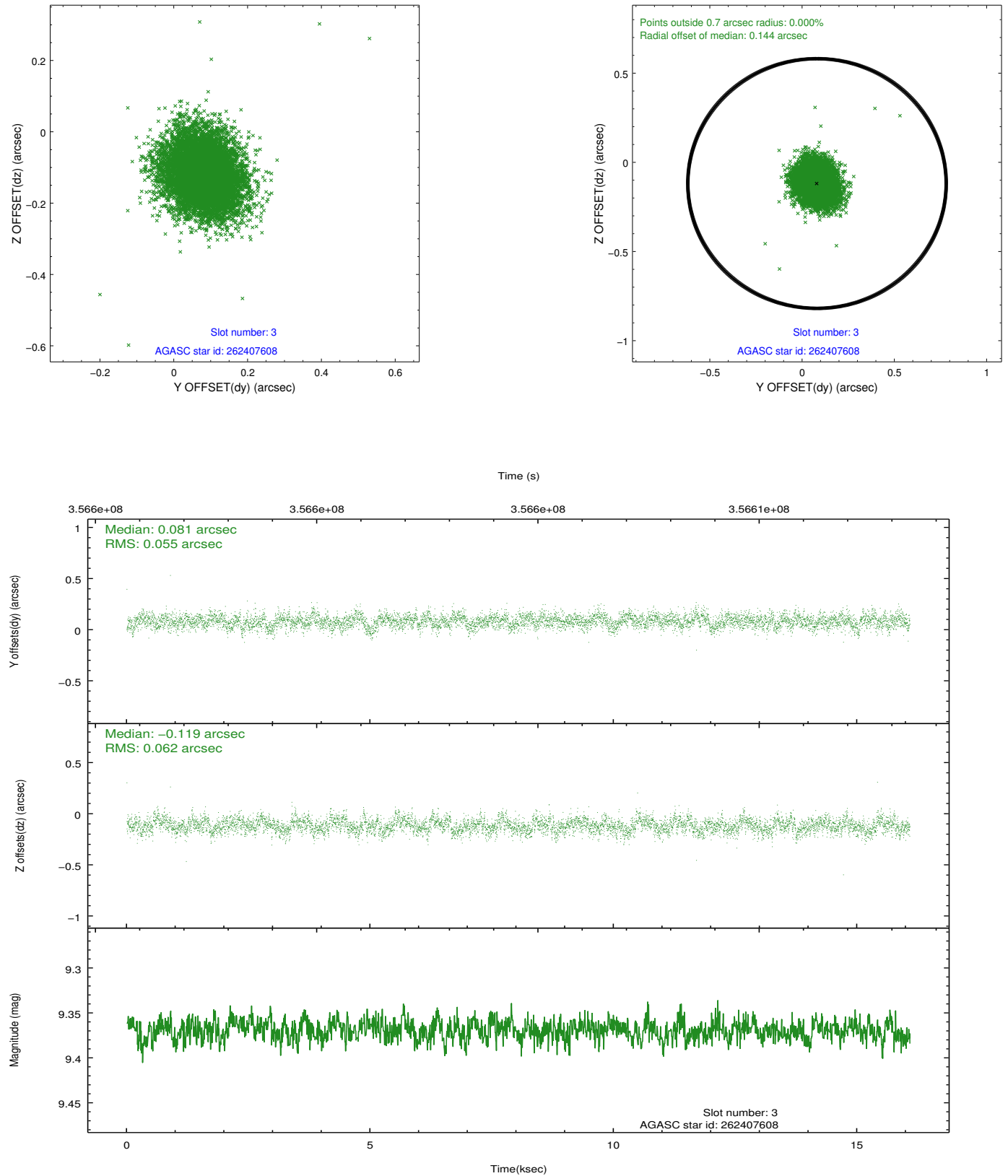


### Slot Statistics

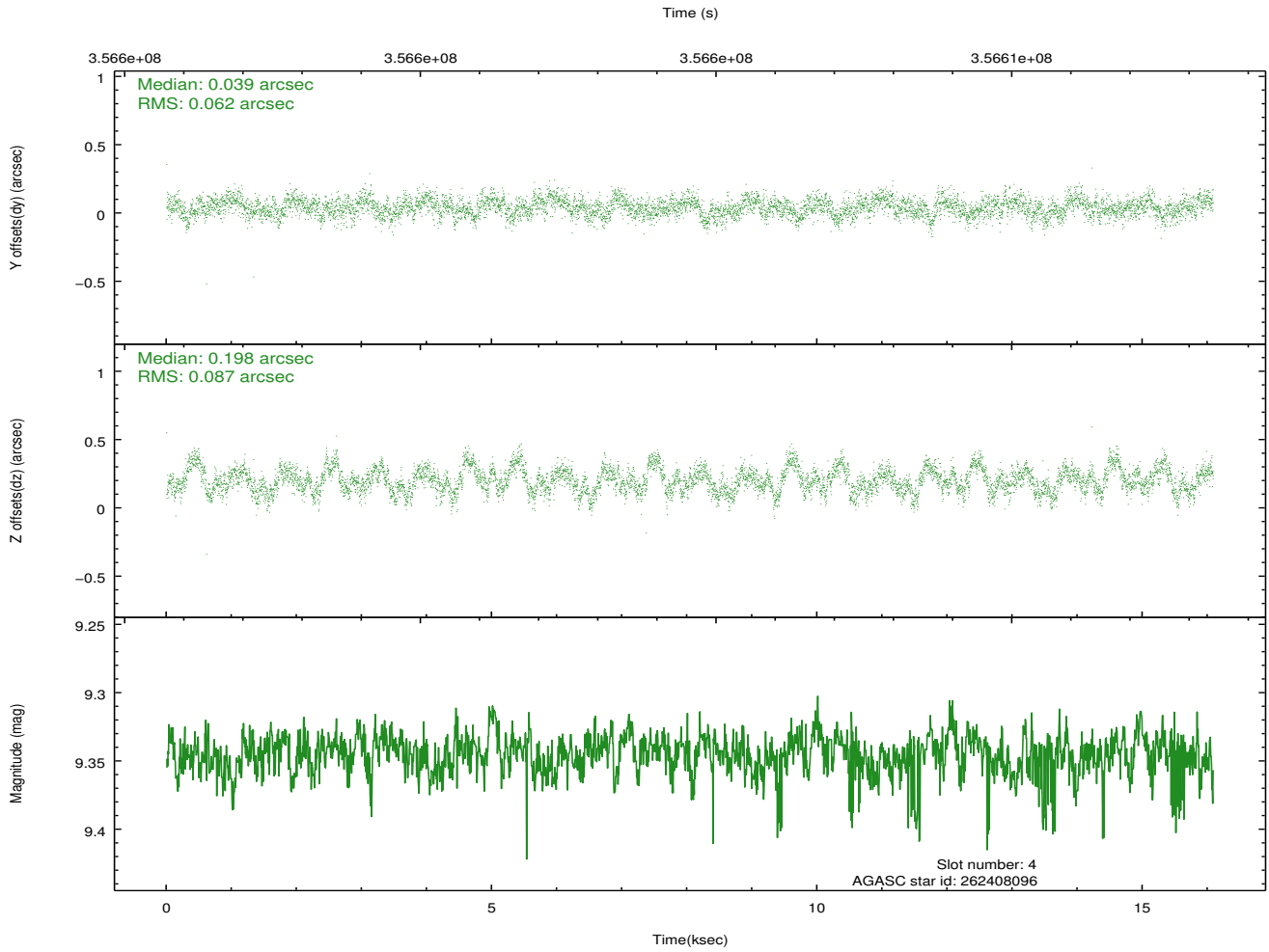
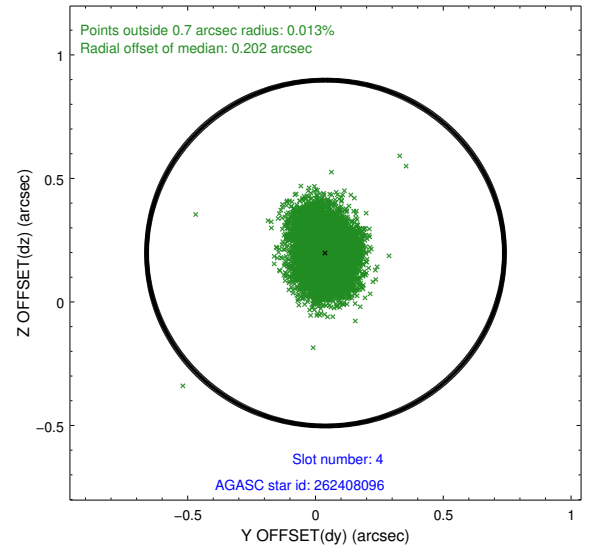
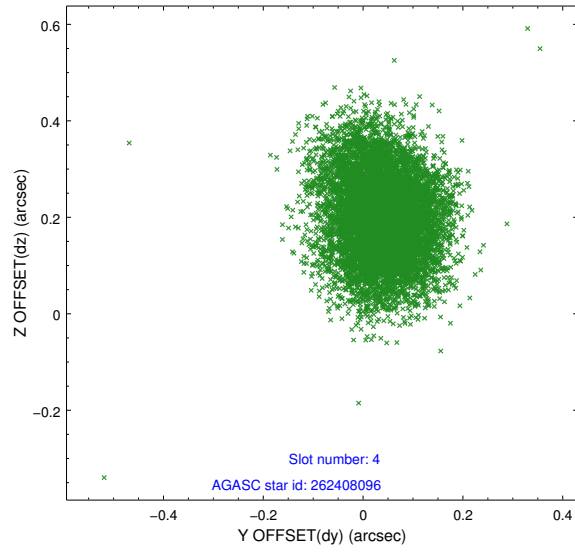
slot	status	id	mag	n_pts	med_dy	med_dz	dr1	dr2	ra	dec	mean_y	mean_z
0	FID	ACIS-S-2	6.93	3924	-0.077	-0.017	0.009	0.015	0.000000	0.000000	-767.55	-1736.23
1	FID	ACIS-S-4	7.02	3923	0.181	0.042	0.008	0.015	0.000000	0.000000	2145.85	172.05
2	FID	ACIS-S-5	7.05	3924	-0.133	-0.016	0.013	0.021	0.000000	0.000000	-1820.12	165.94
3	GUIDE	262407608	9.37	7832	0.081	-0.119	0.087	0.142	207.378401	26.435507	-488.42	39.56
4	GUIDE	262408096	9.34	7833	0.039	0.198	0.114	0.184	207.011678	26.515421	686.36	-276.47
5	GUIDE	262408936	9.63	7836	-0.025	-0.002	0.136	0.229	207.154731	26.726554	206.69	-1024.77
6	GUIDE	262411960	9.70	7839	0.020	-0.009	0.123	0.202	207.327895	25.881727	-279.47	2028.82
7	GUIDE	262408512	7.99	7843	-0.112	-0.071	0.079	0.125	207.800210	27.128796	-1896.51	-2426.99

## 2.4 Star Slots

### 2.4.1 Slot 3

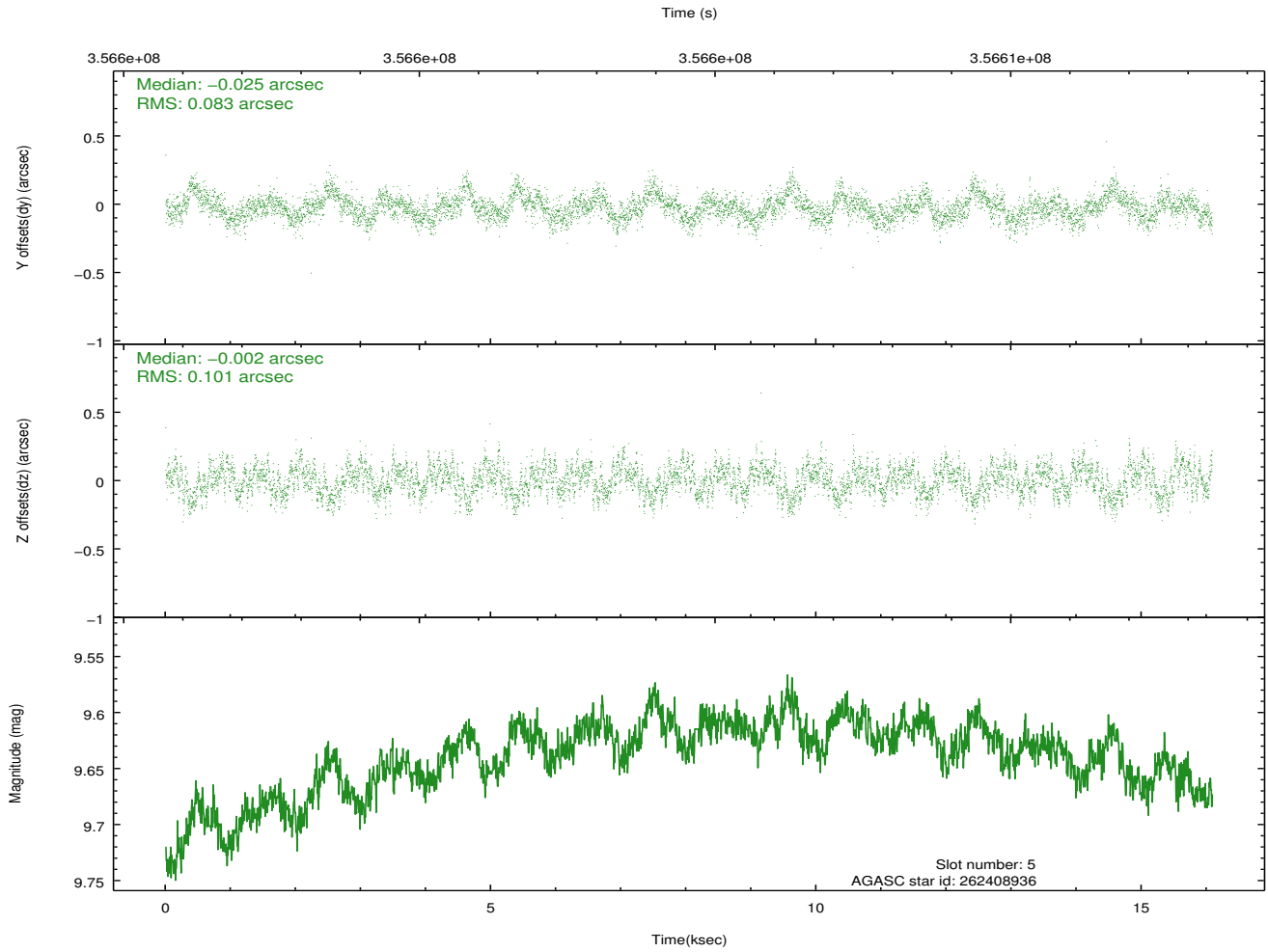
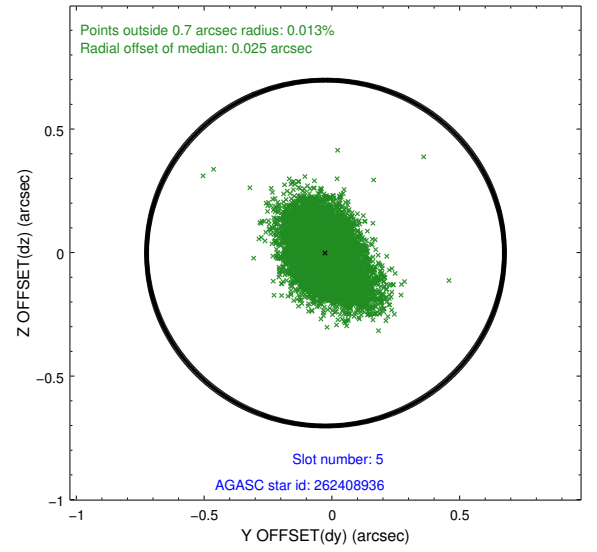
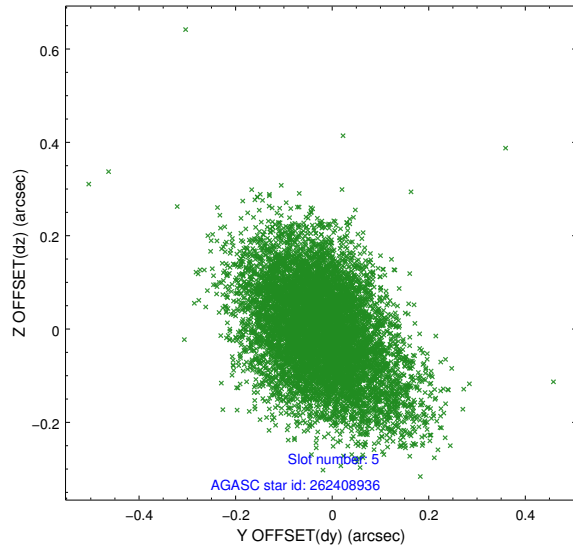


## 2.4.2 Slot 4

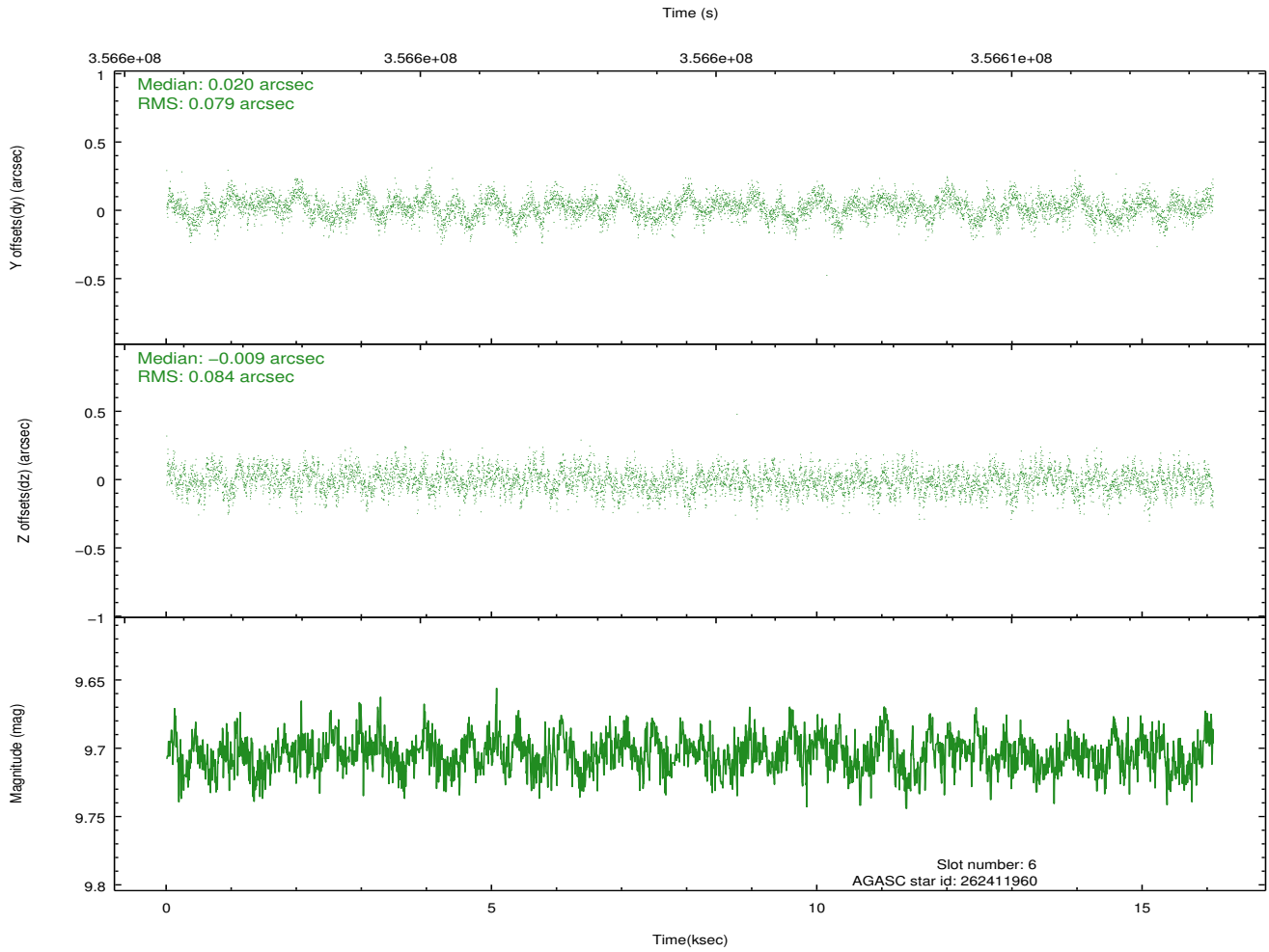
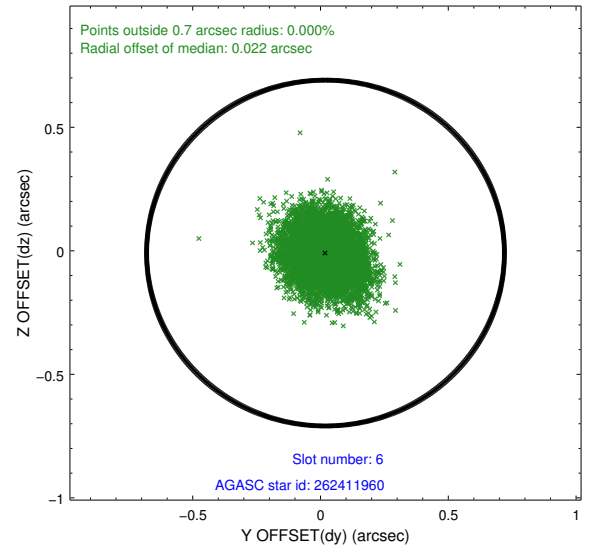
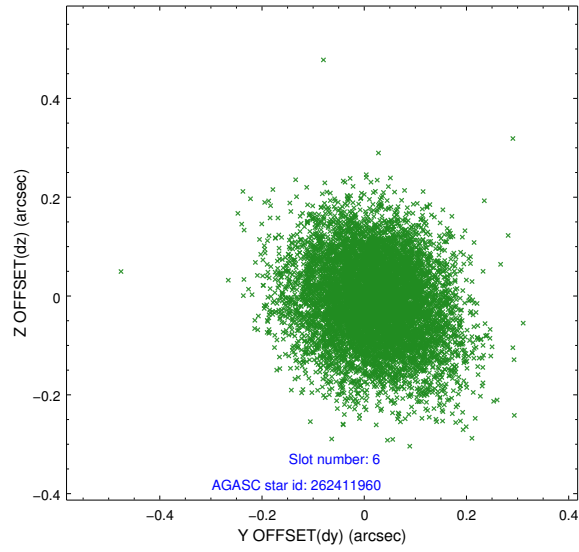




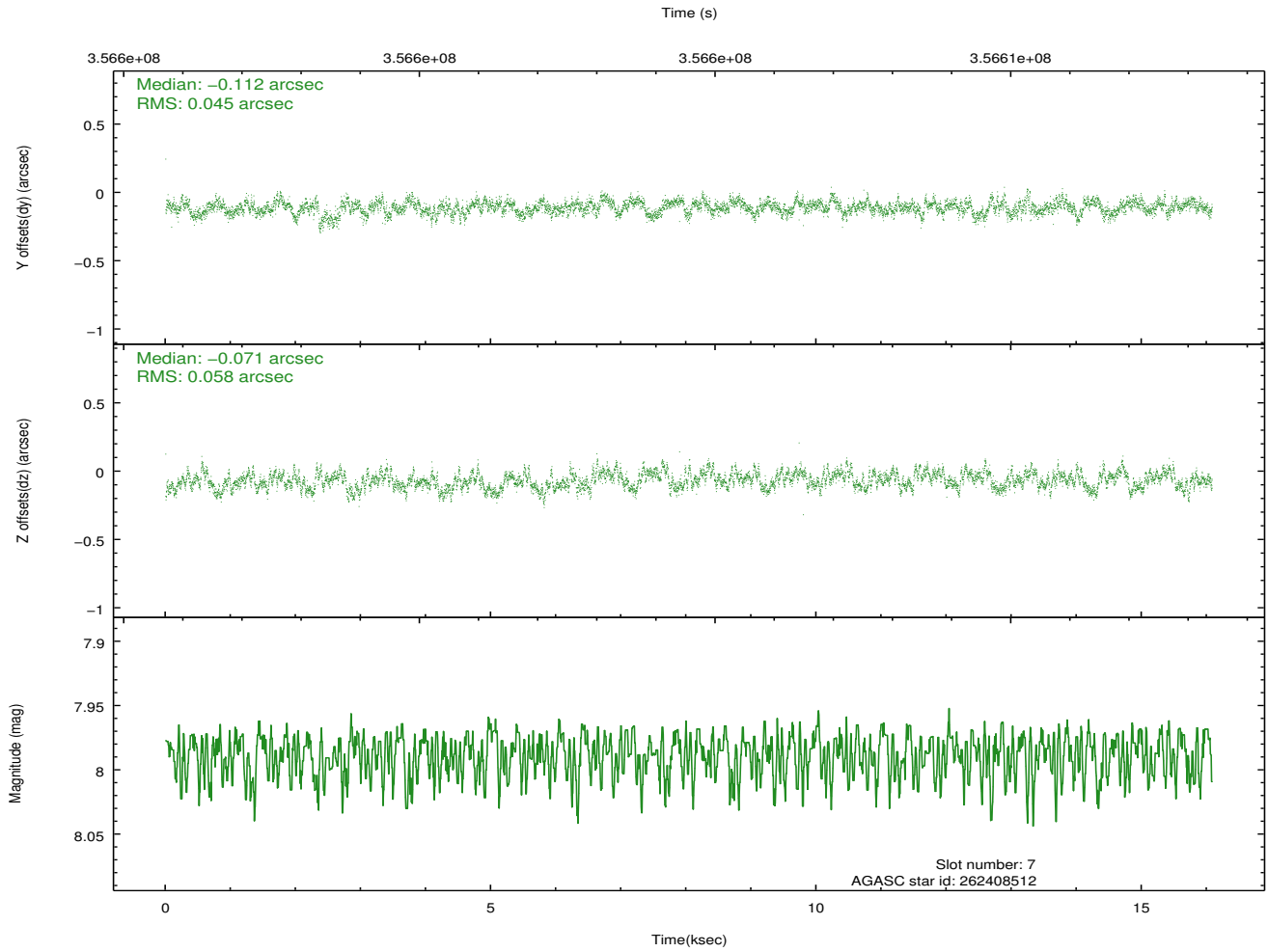
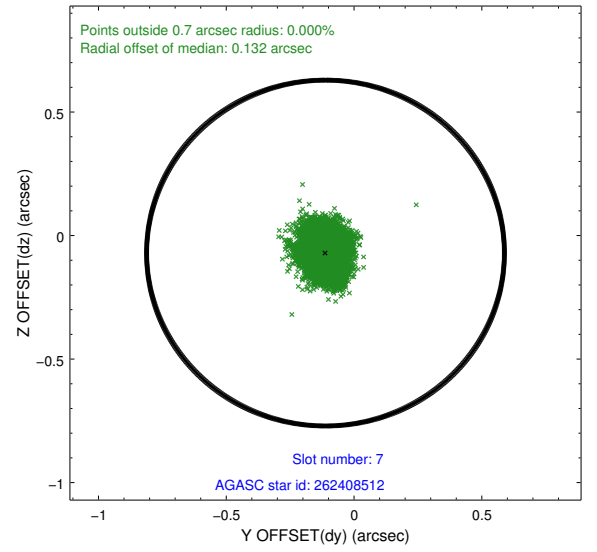
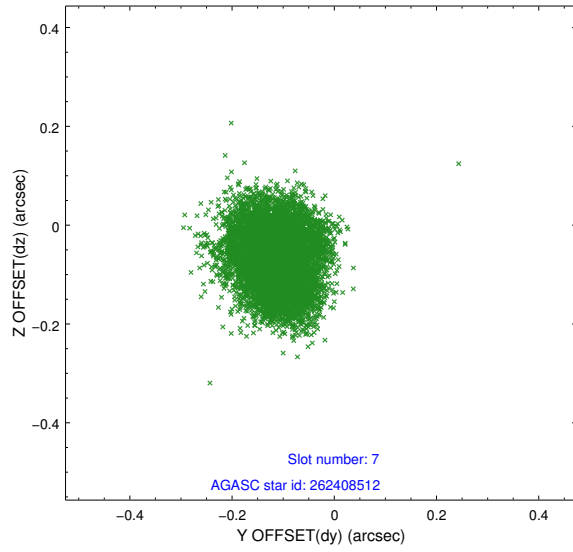
### 2.4.3 Slot 5



## 2.4.4 Slot 6

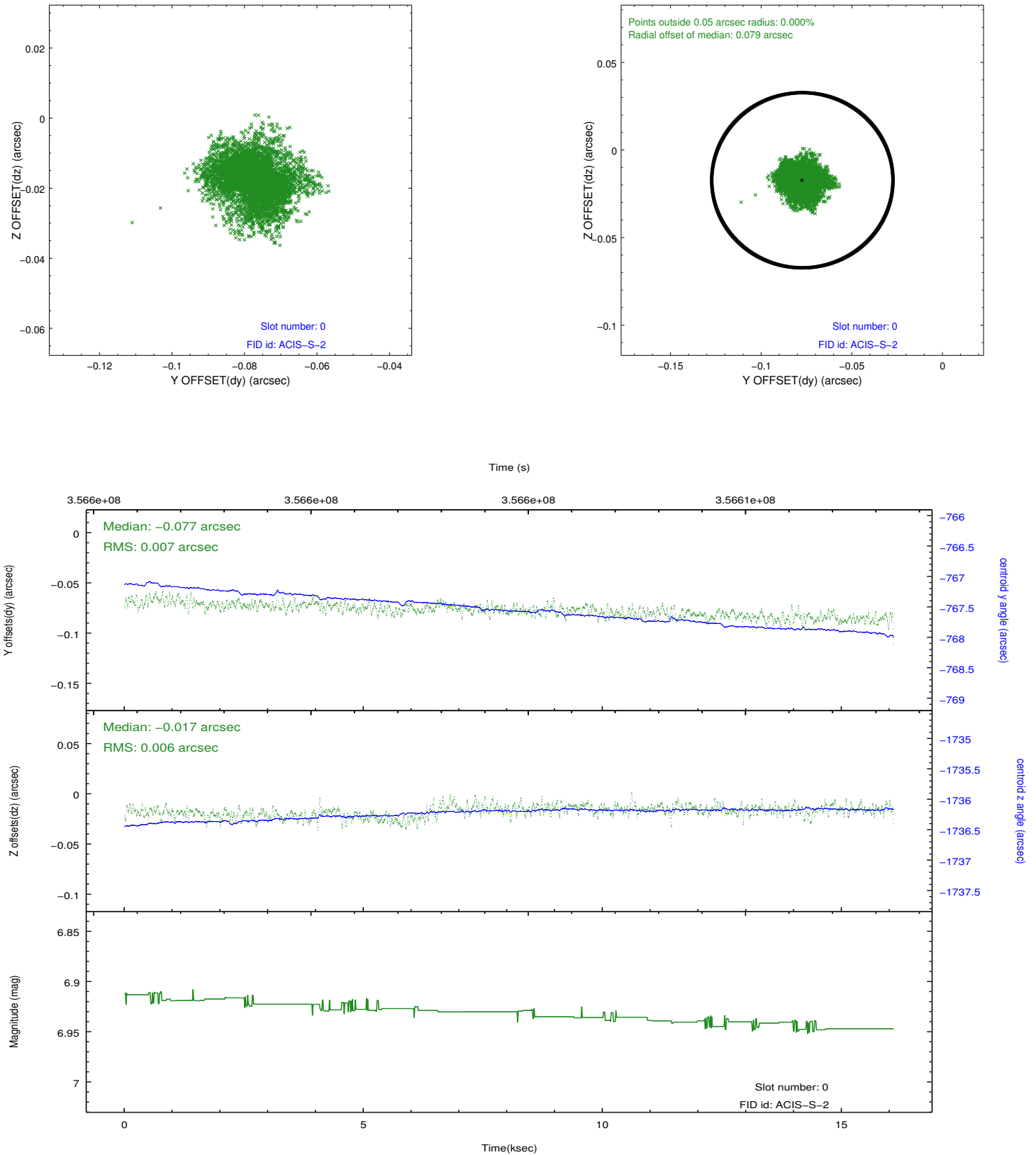


## 2.4.5 Slot 7

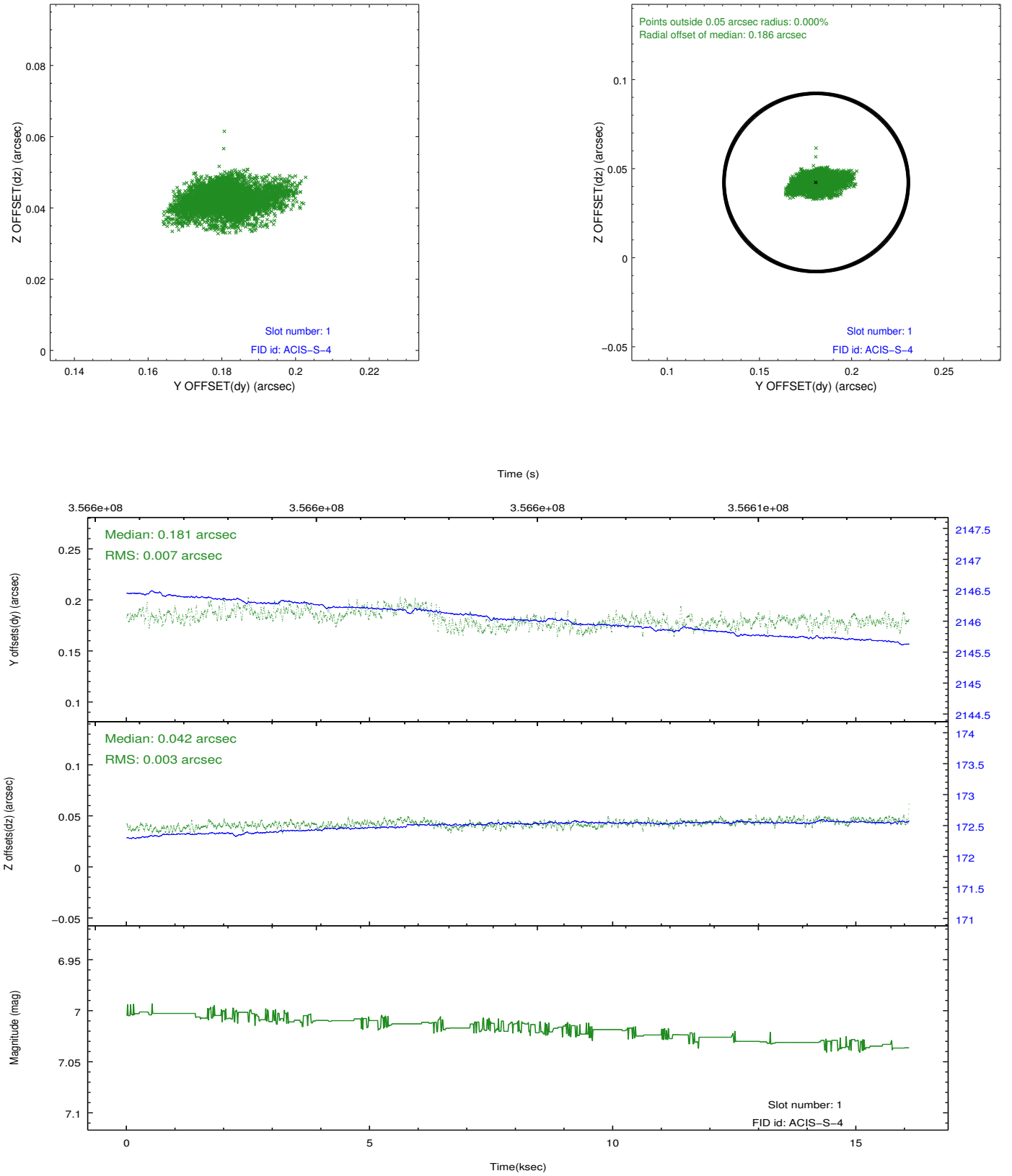


## 2.5 FID Slots

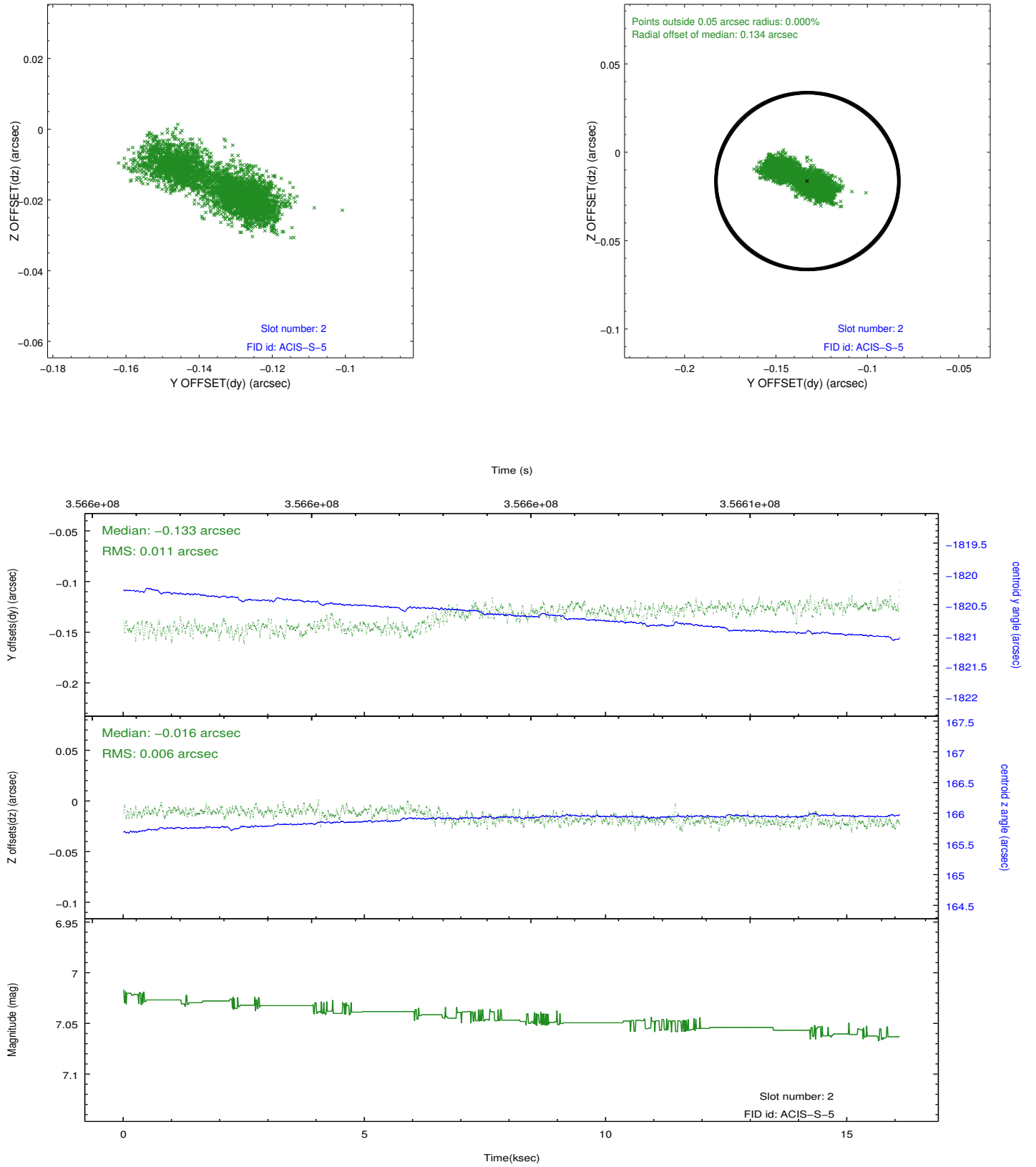
### 2.5.1 Slot 0



## 2.5.2 Slot 1



### 2.5.3 Slot 2



## A Summary

### A.1 Status

V&V Scientist	Beth Sundheim
V&V Date (YYYY-MM-DD)	2012.06.07
V&V Edition	1
V&V Disposition and Status	OK
V&V Charge Time	15.6735591

### A.2 Comments