

V&V Reference Report

L2 ASCDS Version : 8.4.5

Observation 11926 - L2 Version 2
Chandra X-Ray Center

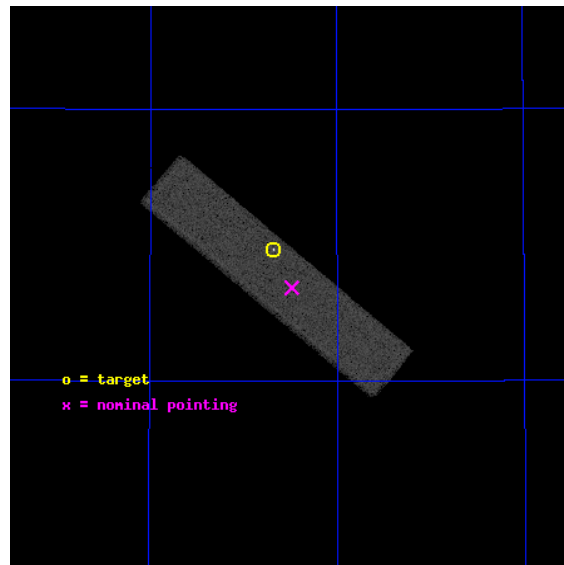
L2 Processing Date : Jul 3 2012

Contents

1	Front	2
2	OBI	3
2.1	OBI	3
2.1.1	Images	3
2.1.2	Parameters	4
2.1.3	Events	4
2.2	Compared Parameters	5
2.3	Aspect	6
2.4	Star Slots	9
2.4.1	Slot 3	9
2.4.2	Slot 4	10
2.4.3	Slot 5	11
2.4.4	Slot 6	12
2.4.5	Slot 7	13
2.5	FID Slots	14
2.5.1	Slot 0	14
2.5.2	Slot 1	15
2.5.3	Slot 2	16
A	Summary	17
A.1	Status	17
A.2	Comments	17

1 Front

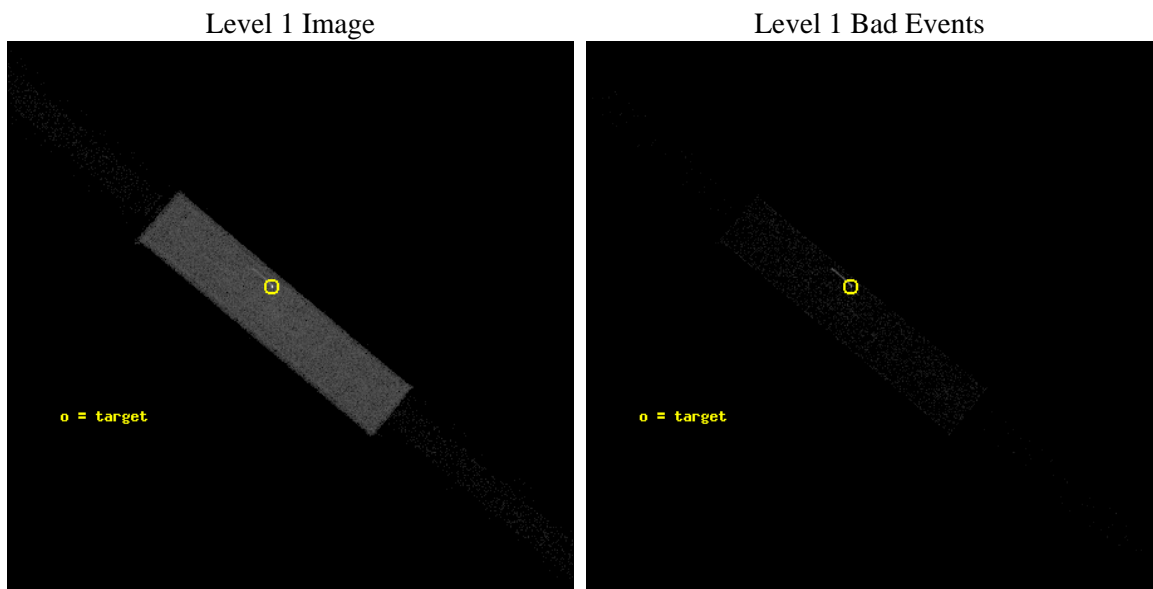
seq_num	290915	Sequence number
obs_id	11926	Observation id
title	AO-11 Calibration Observations to Monitor the Spatial Variations in the HRC-S Gain	Proposal title
observer	Dr. CXC Calibration	Principal investigator
object	ArLac	Source name
ra_targ	332.17	Observer's specified target RA [deg]
dec_targ	45.742306	Observer's specified target Dec [deg]
ra_nom	332.1206107982	Nominal RA [deg]
dec_nom	45.671796121868	Nominal Dec [deg]
roll_nom	219.73639262562	Nominal Roll [deg]
revision	2	Processing version of data
ontime	1149.2813090086	[s]
livetime	1139.8108936336	Ontime multiplied by DTCOR
l2events	70456	Number of level 2 events



2 OBI

2.1 OBI

2.1.1 Images



2.1.2 Parameters

obi_num	0	Obi number	sched_exp_time	1000.000000	[s] Scheduled observation exposure time
ascdsver	8.4.5	Processing system revision	ontime	1149.2813090086	[s]
caldsver	4.5.0	 	l1events	110792	Number of level 1 events
date	2012-07-04T00:00:13	Date and time of file creation			
revision	2	Processing version of data			

2.1.3 Events

Level 1 Events

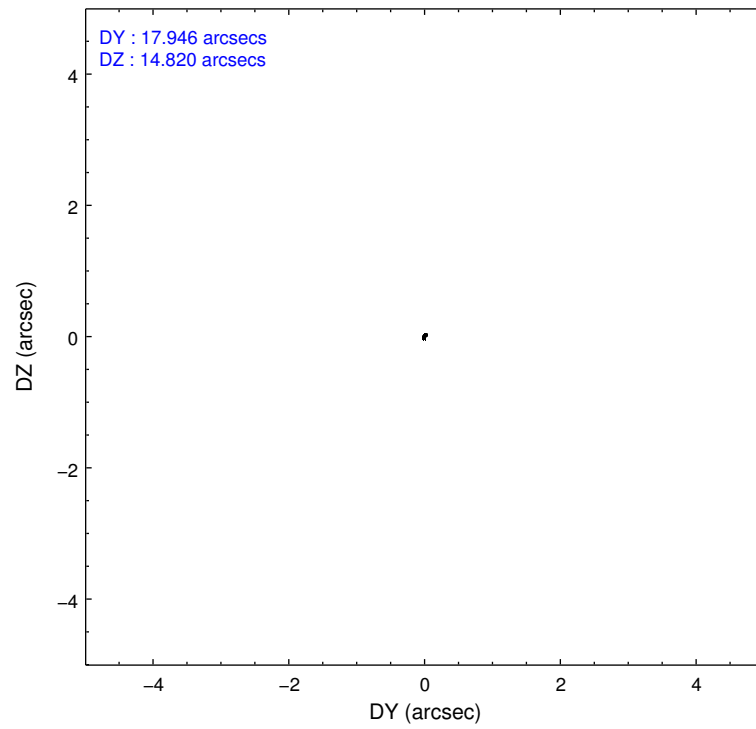
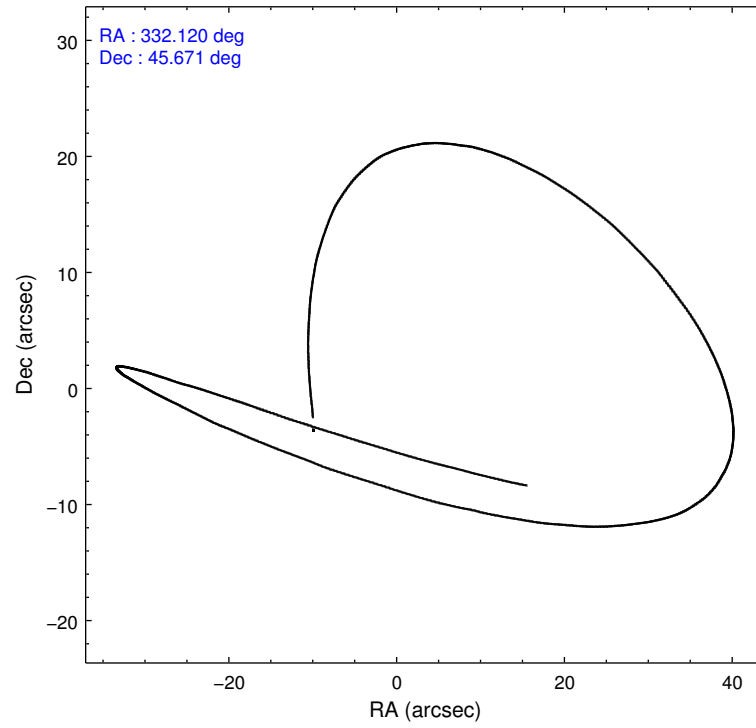
	segment 1	segment 2	segment 3
level 1 events	975	108841	976
rejected events	975	25993	976
rejected %	100%	23%	100%

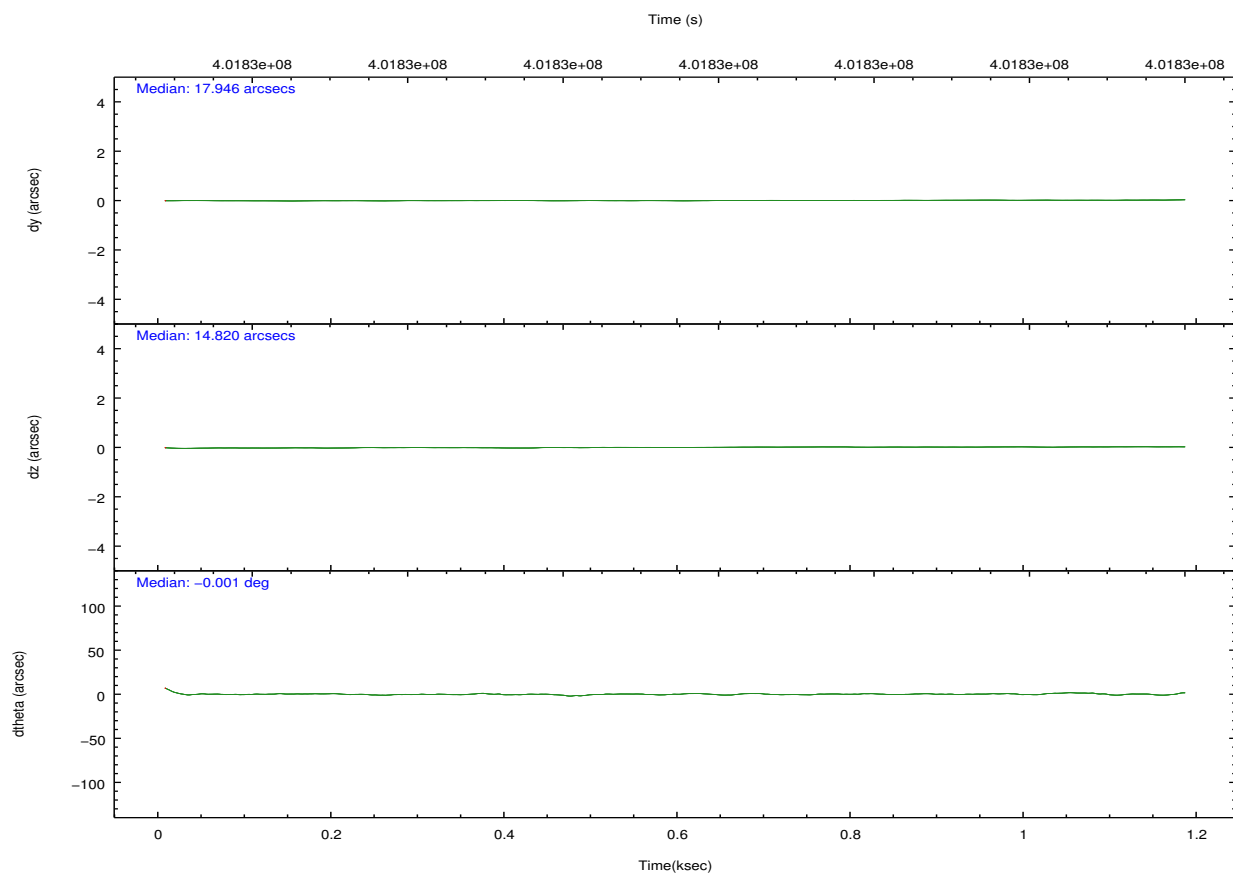
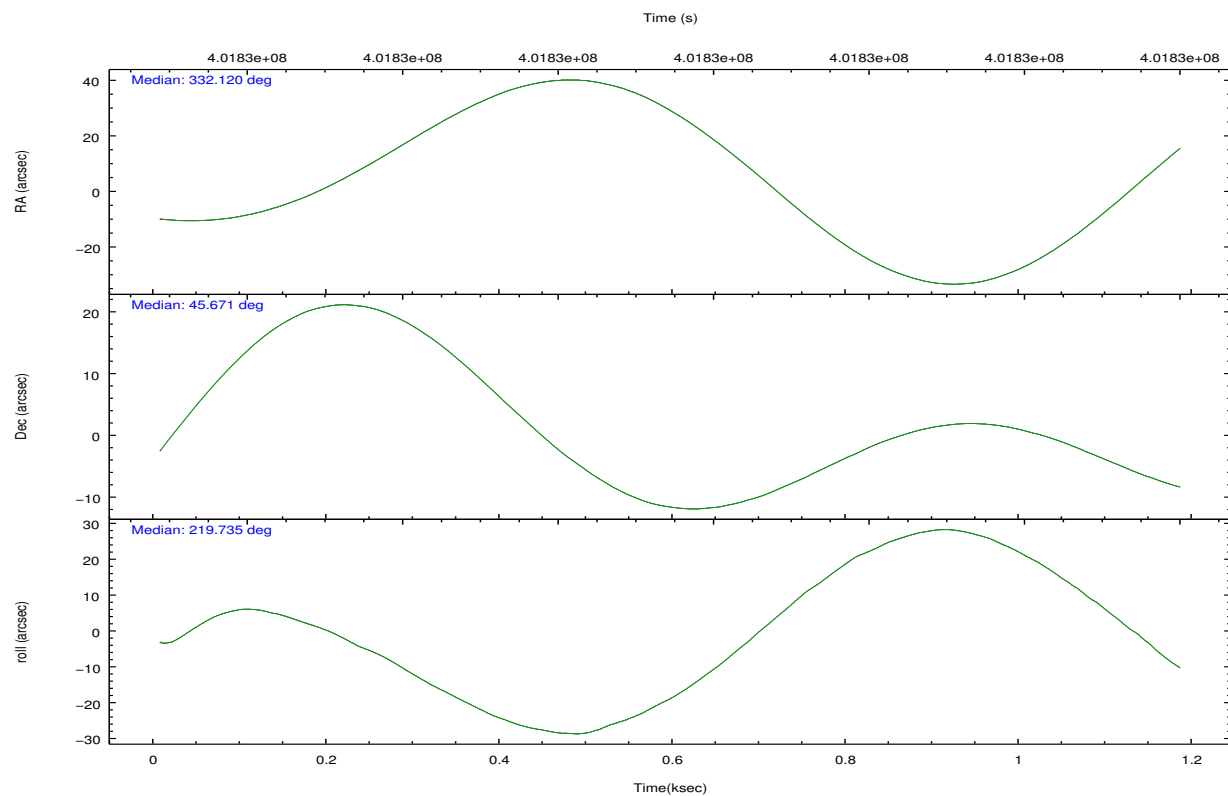
2.2 Compared Parameters

Parameter	Planned	Actual
Instrument	HRC	HRC
Detector	HRC-S	HRC-S
Grating	NONE	NONE
Data mode	OBSERVING	OBSERVING
Observation mode	POINTING	POINTING
[deg] Pointing RA	332.133943	332.1206107982006
[deg] Pointing Dec	45.698497	45.67179612186775
[deg] Pointing Roll	219.659565	219.736392625617
[mm] SIM focus pos	-1.533336	-1.526339935833849
[mm] SIM defocus	7.710433287538843e-07	0.006996703570447904
[mm] SIM translation stage pos	250.455976	250.466033080201
[mm] SIM translation stage offset	0	-0.01005468664627074
[s] Observation start time (MET)	401833339.184000	401832963.11523
Observation start date	2010-09-25T20:21:13	2010-09-25T20:16:03
[s] Observation end time (MET)	401834339.184000	401834473.45281
Observation end date	2010-09-25T20:37:53	2010-09-25T20:41:13

Parameter	Planned	Actual
Obspar format version number	7	7
Obspar file type	PREDICTED	ACTUAL
Obspar update status	NONE	UPDATED

2.3 Aspect



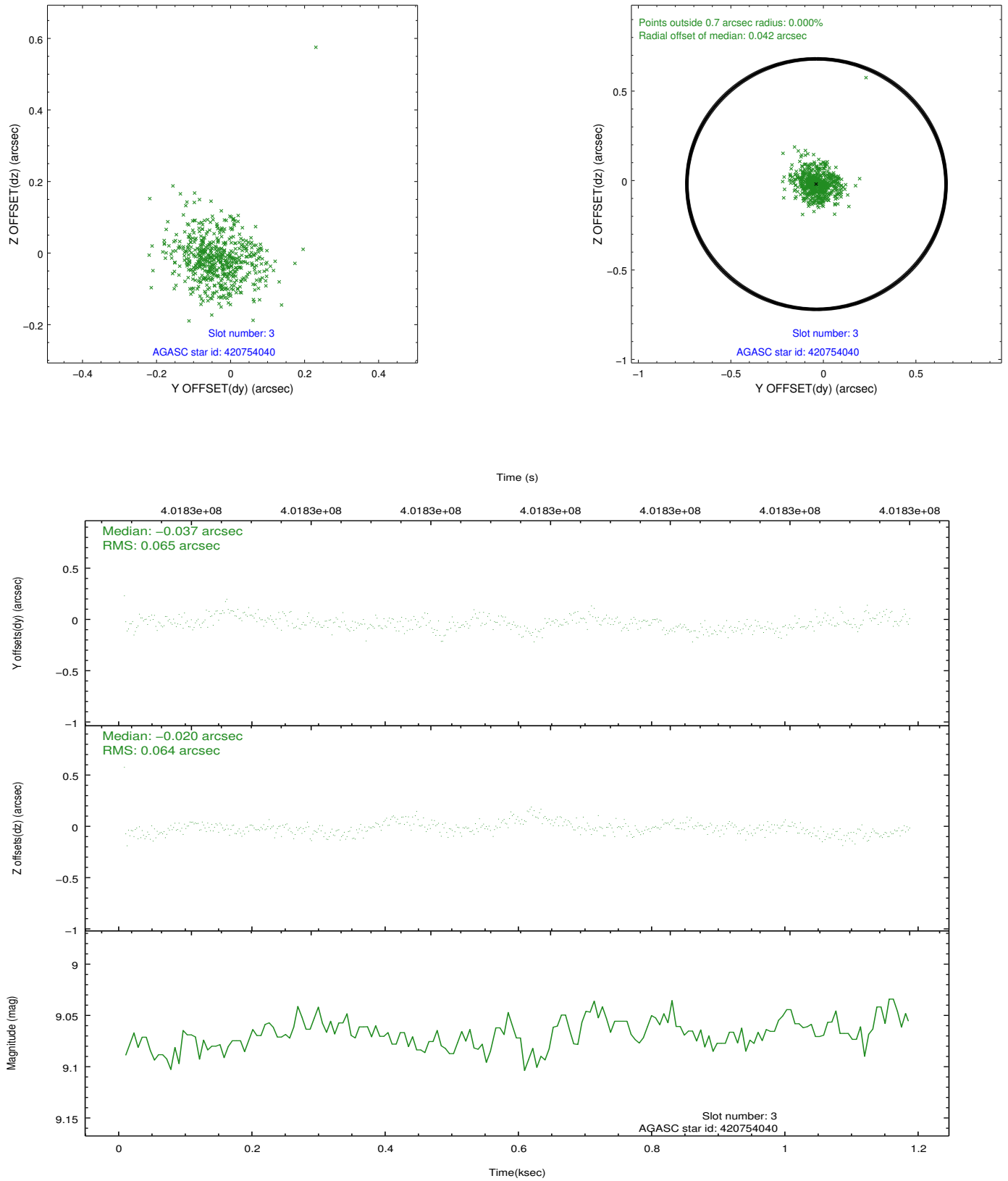


Slot Statistics

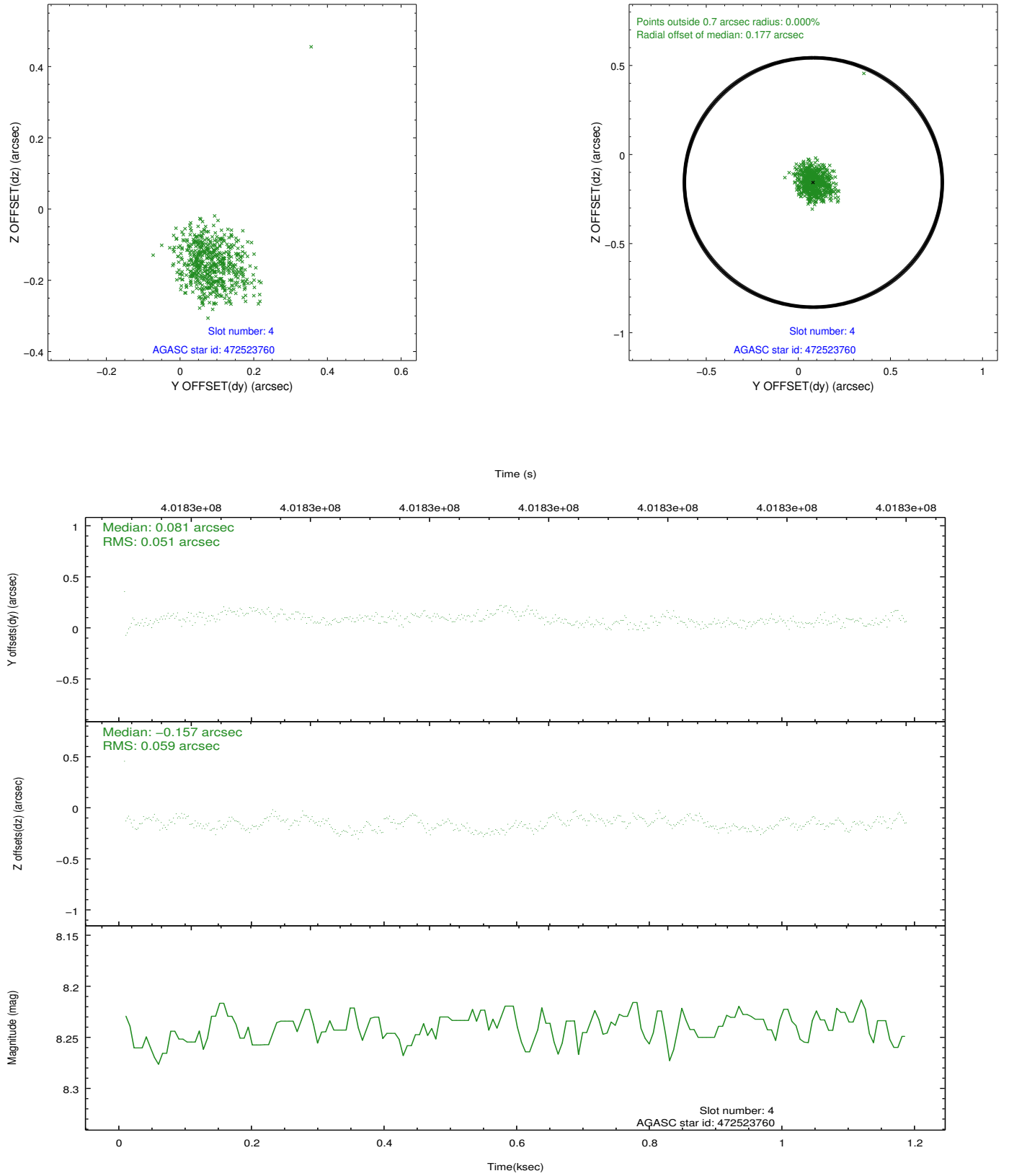
slot	status	id	mag	n_pts	med_dy	med_dz	dr1	dr2	ra	dec	mean_y	mean_z
0	FID	HRC-S-2	6.97	288	0.182	-0.137	0.008	0.014	0.000000	0.000000	1227.31	-456.35
1	FID	HRC-S-3	7.01	288	-0.002	-0.078	0.005	0.008	0.000000	0.000000	-1170.94	564.40
2	FID	HRC-S-4	6.93	288	0.225	-0.080	0.008	0.013	0.000000	0.000000	1221.91	570.39
3	GUIDE	420754040	9.07	575	-0.037	-0.020	0.095	0.152	331.917939	44.882543	2297.17	1913.58
4	GUIDE	472523760	8.24	575	0.081	-0.157	0.081	0.124	331.645363	45.403260	1630.83	34.16
5	GUIDE	472525528	6.64	576	-0.292	0.009	0.085	0.143	331.551102	45.248694	2169.77	303.61
6	GUIDE	472533912	9.15	576	0.112	0.238	0.132	0.205	331.791136	46.368695	-881.58	-2397.83
7	GUIDE	472655152	9.43	575	0.141	-0.066	0.131	0.217	332.504239	45.862991	-1095.41	134.60

2.4 Star Slots

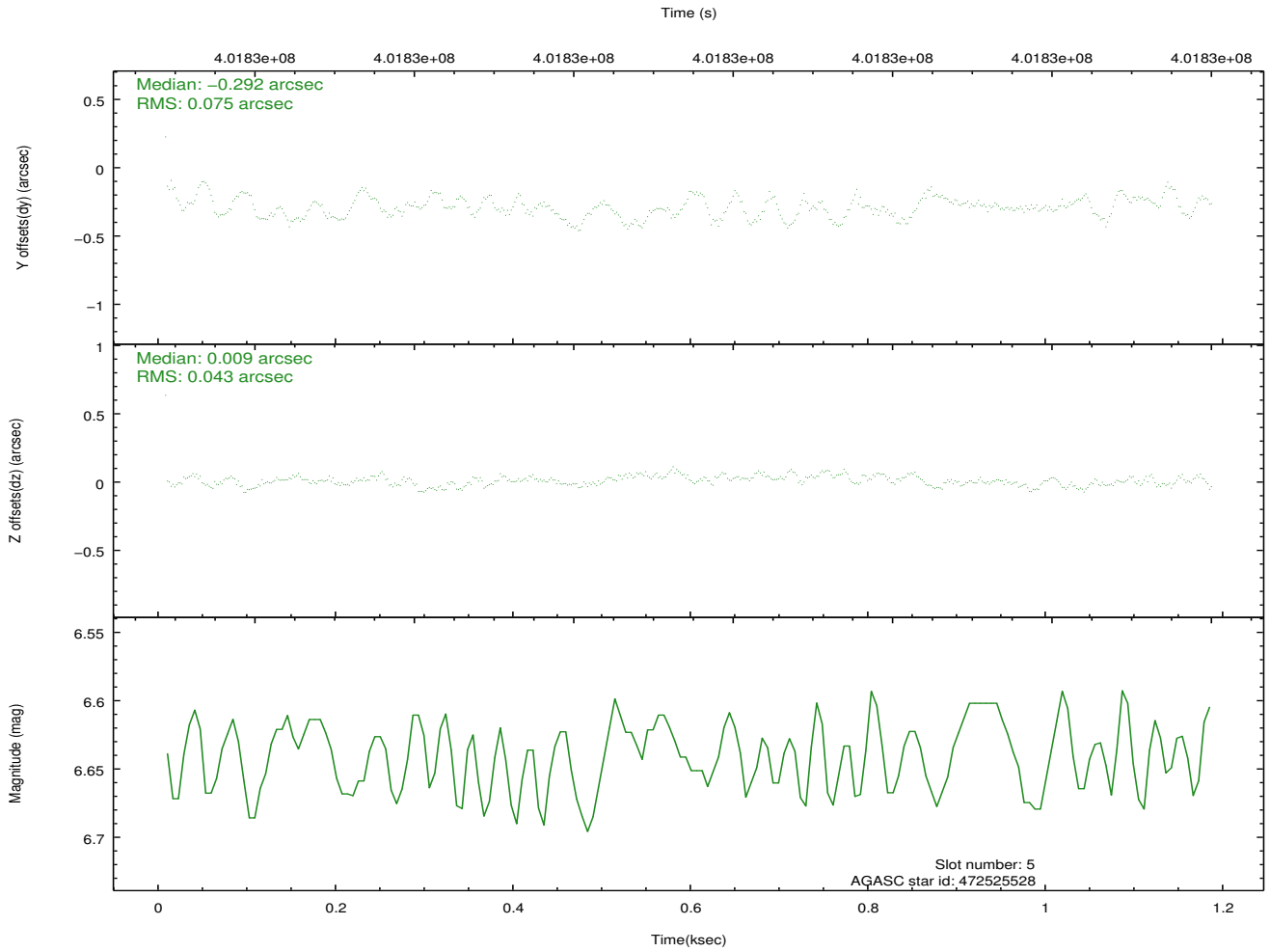
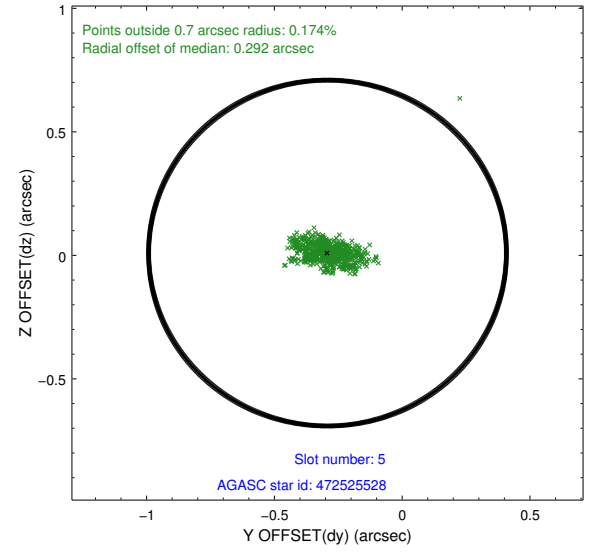
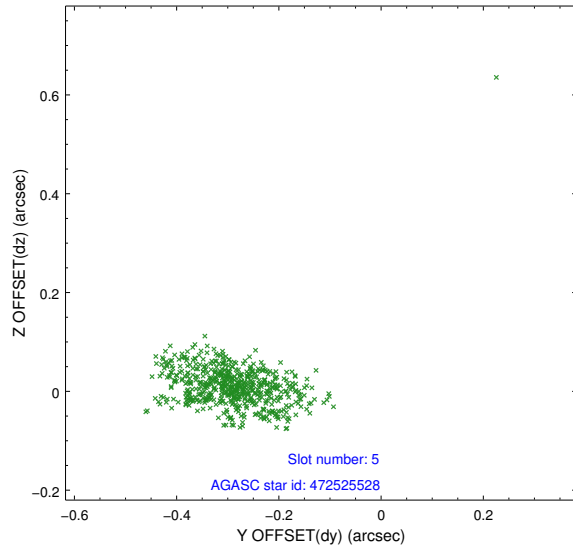
2.4.1 Slot 3



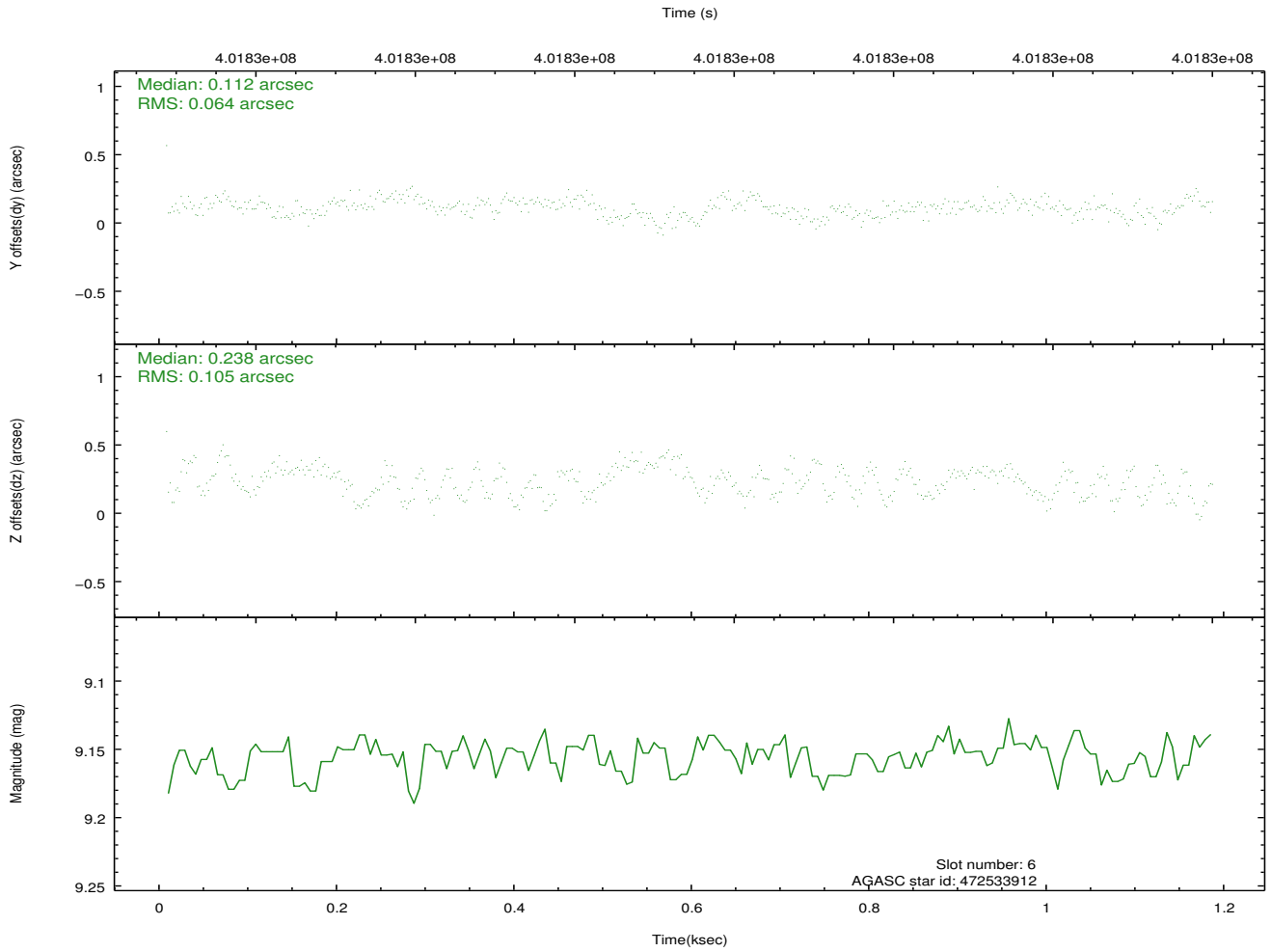
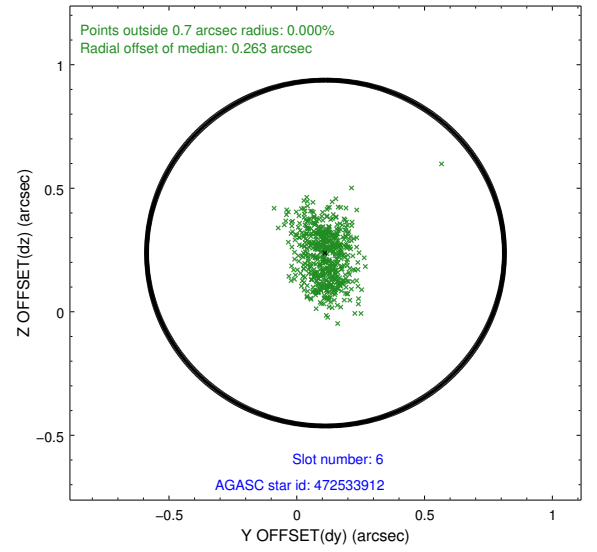
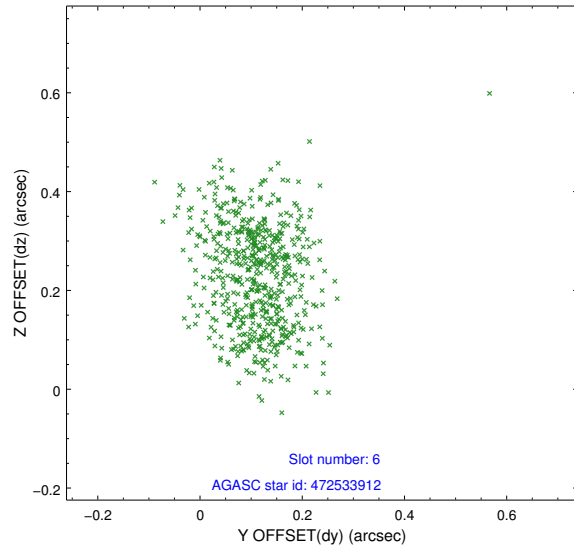
2.4.2 Slot 4



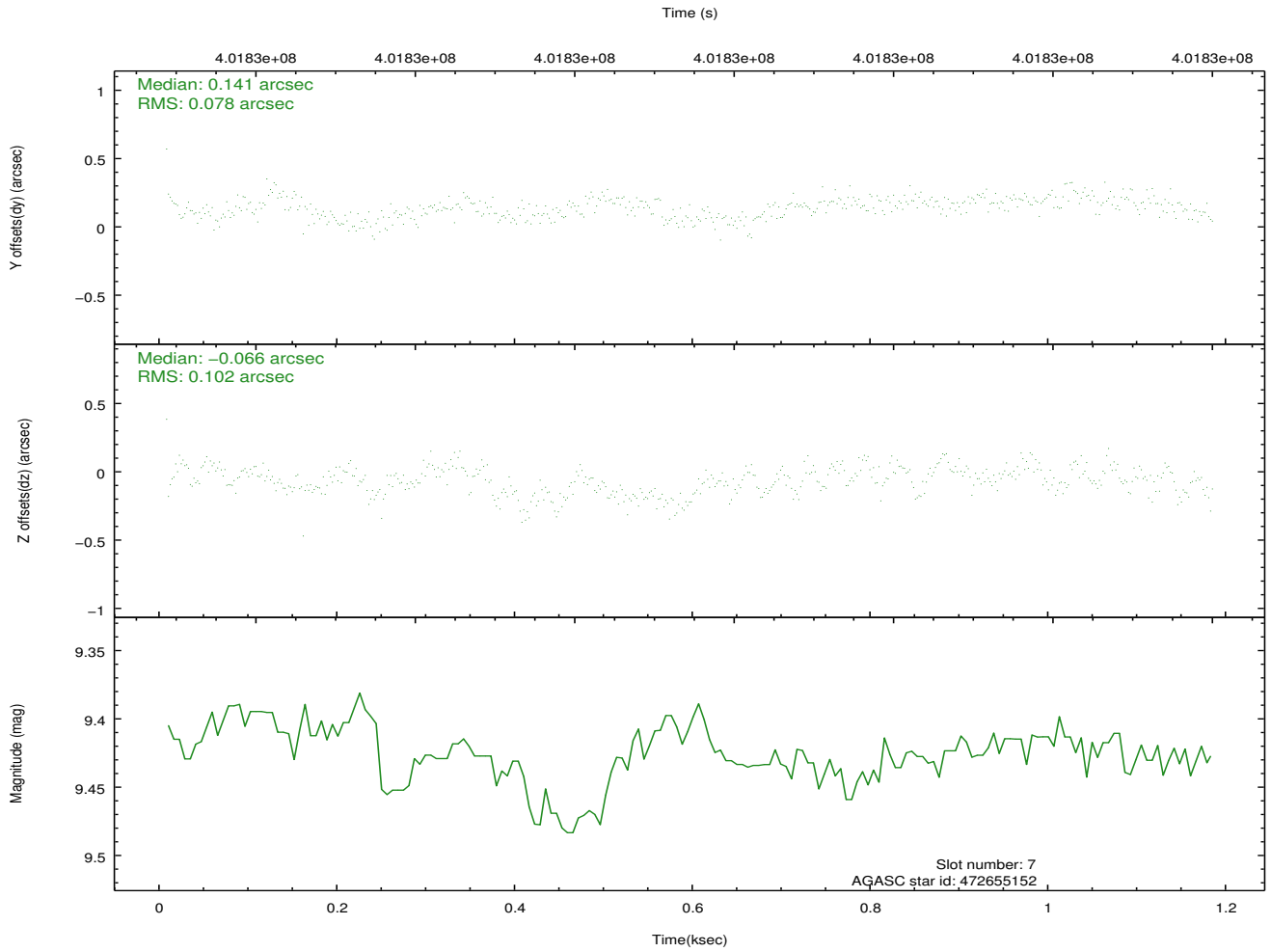
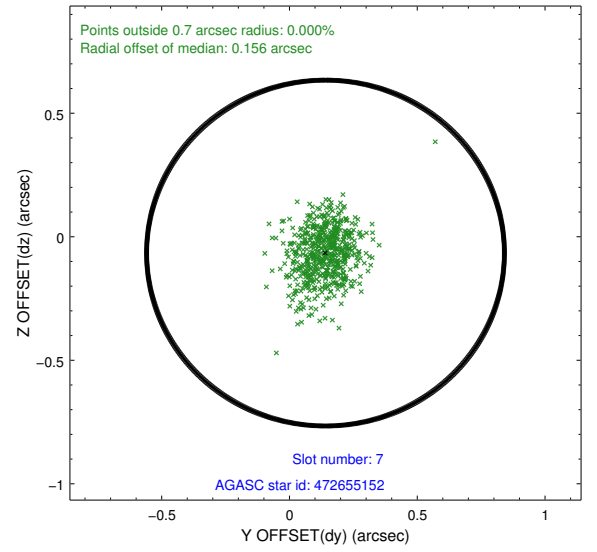
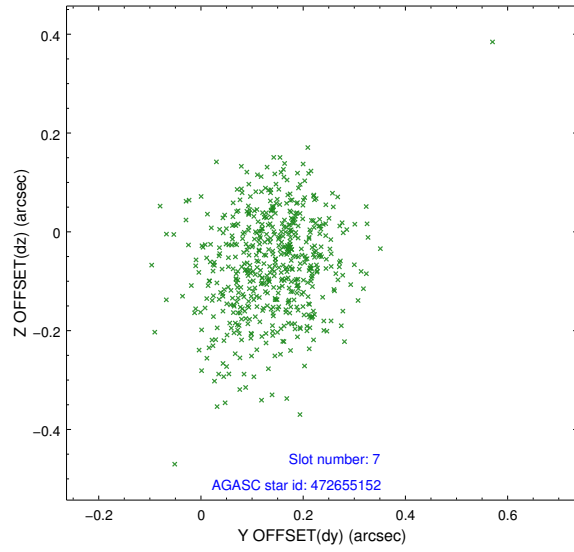
2.4.3 Slot 5



2.4.4 Slot 6

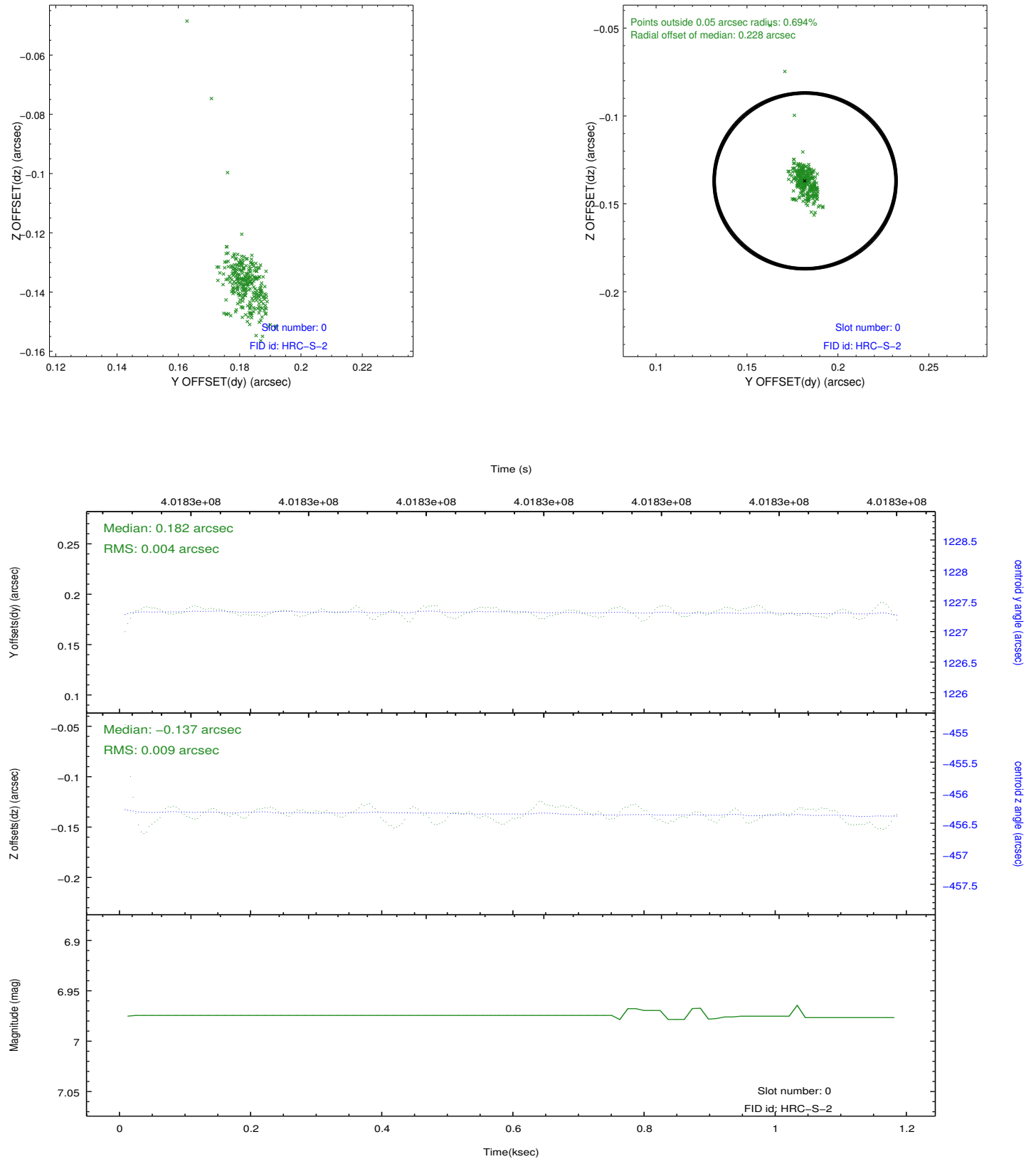


2.4.5 Slot 7

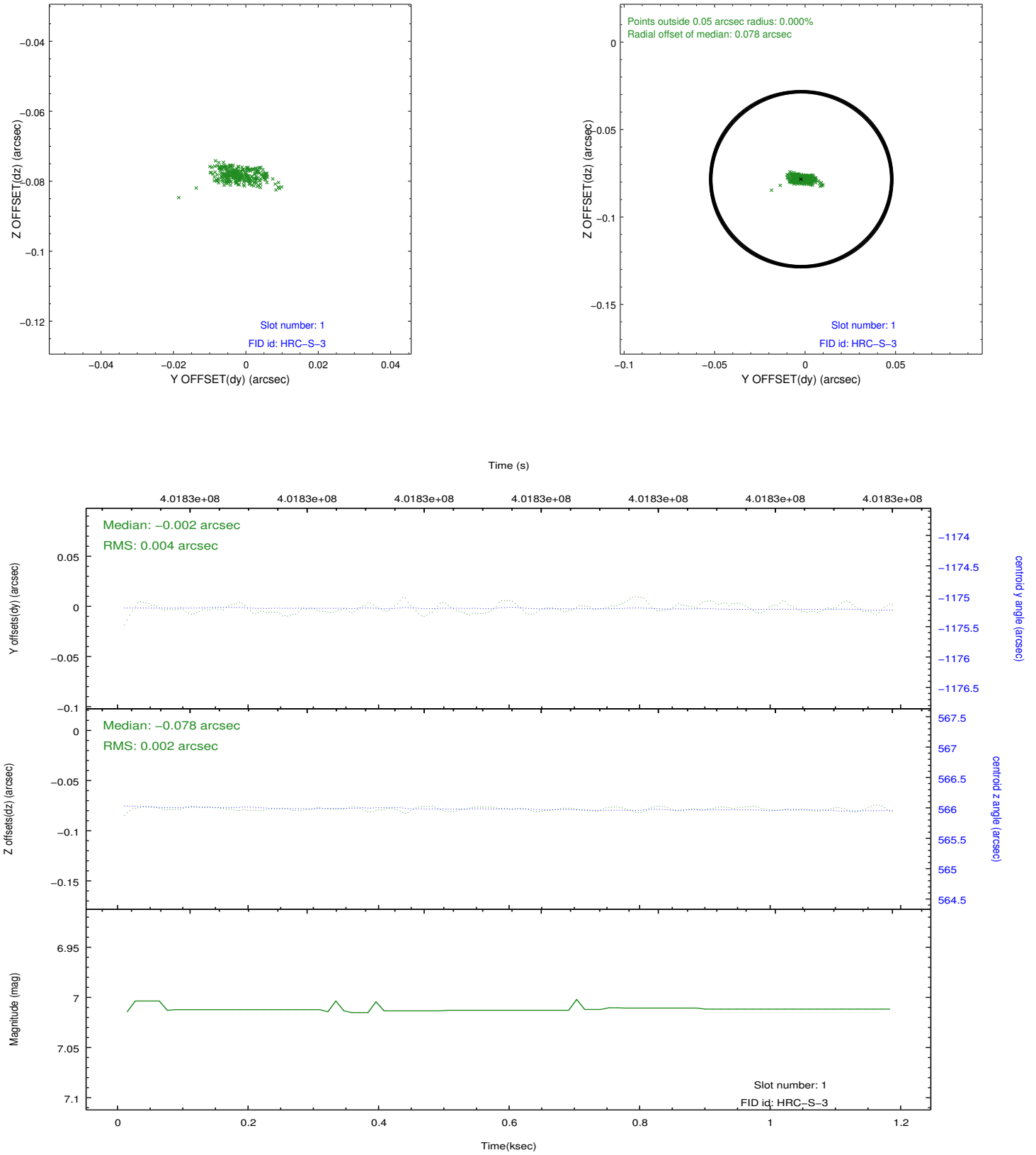


2.5 FID Slots

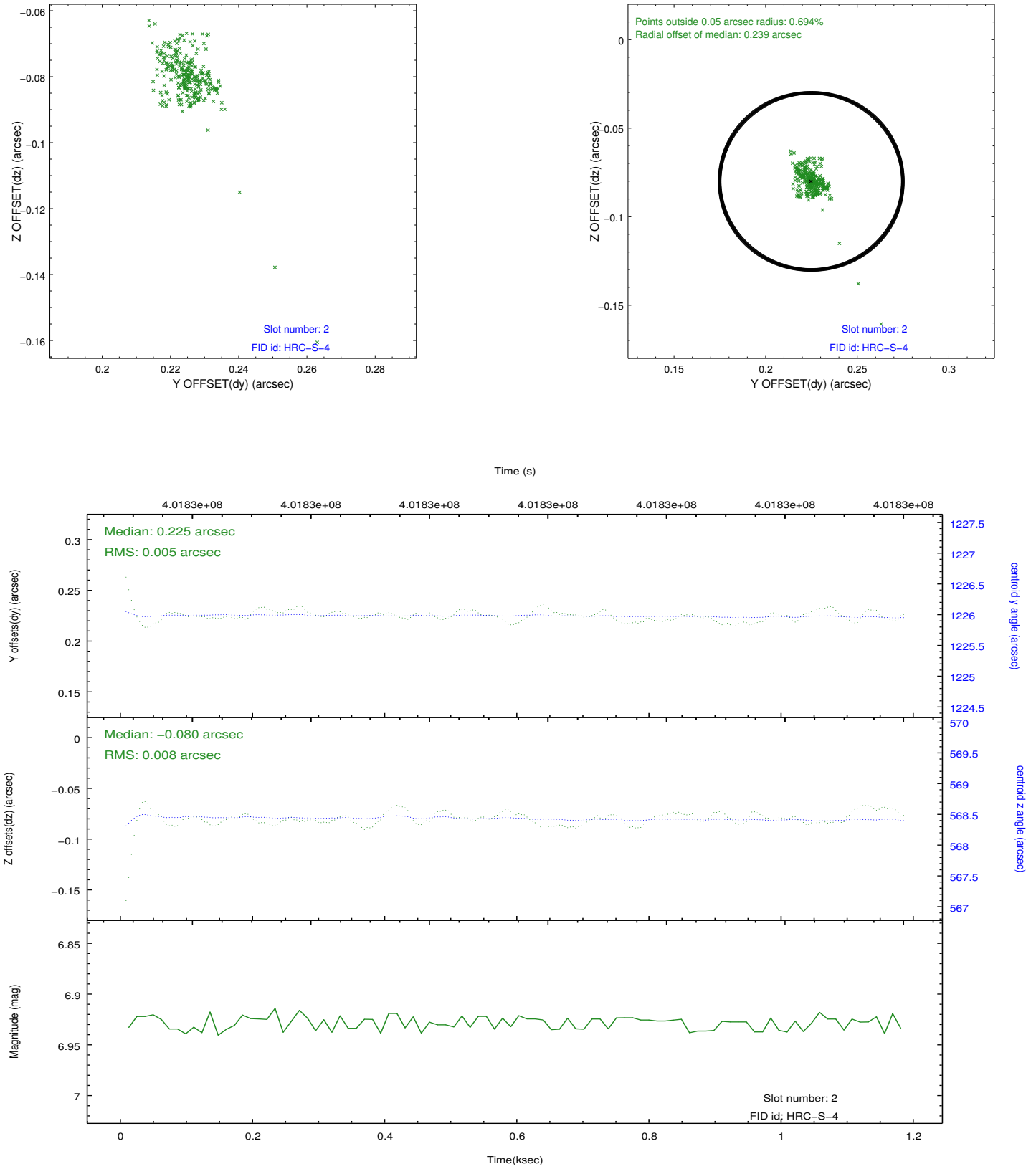
2.5.1 Slot 0



2.5.2 Slot 1



2.5.3 Slot 2



A Summary

A.1 Status

V&V Scientist	Jen Lauer
V&V Date (YYYY-MM-DD)	2012.07.12
V&V Edition	1
V&V Disposition and Status	OK
V&V Charge Time	1.149281308949

A.2 Comments