

V&V Reference Report

L2 ASCDS Version : 8.4.5

Observation 11919 - L2 Version 2
Chandra X-Ray Center

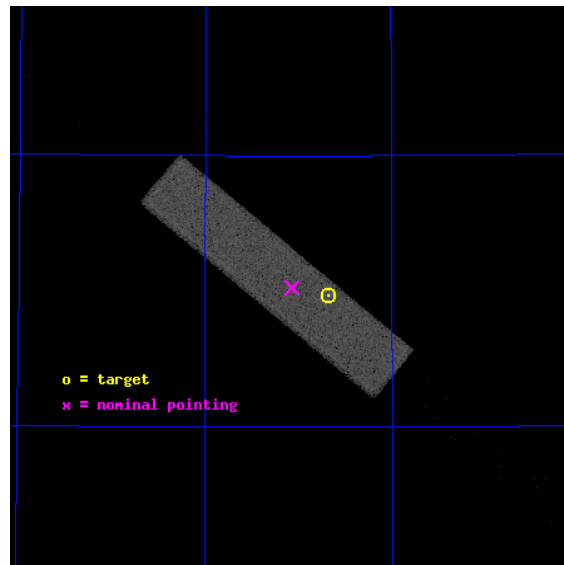
L2 Processing Date : Jul 3 2012

Contents

1	Front	2
2	OBI	3
2.1	OBI	3
2.1.1	Images	3
2.1.2	Parameters	4
2.1.3	Events	4
2.2	Compared Parameters	5
2.3	Aspect	6
2.4	Star Slots	9
2.4.1	Slot 3	9
2.4.2	Slot 4	10
2.4.3	Slot 5	11
2.4.4	Slot 6	12
2.4.5	Slot 7	13
2.5	FID Slots	14
2.5.1	Slot 0	14
2.5.2	Slot 1	15
2.5.3	Slot 2	16
A	Summary	17
A.1	Status	17
A.2	Comments	17

1 Front

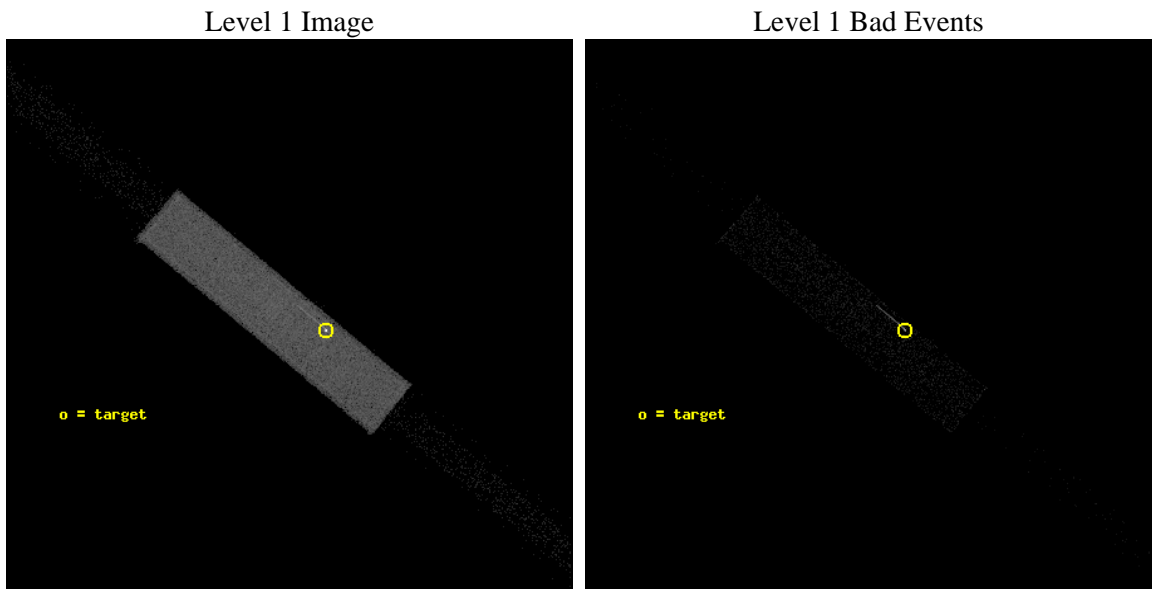
seq_num	290908	Sequence number
obs_id	11919	Observation id
title	AO-11 Calibration Observations to Monitor the Spatial Variations in the HRC-S Gain	Proposal title
observer	Dr. CXC Calibration	Principal investigator
object	ArLac	Source name
ra_targ	332.17	Observer's specified target RA [deg]
dec_targ	45.742306	Observer's specified target Dec [deg]
ra_nom	332.26779305905	Nominal RA [deg]
dec_nom	45.756517978041	Nominal Dec [deg]
roll_nom	219.50562628076	Nominal Roll [deg]
revision	2	Processing version of data
ontime	1153.3813092709	[s]
livetime	1143.7861951304	Ontime multiplied by DTCOR
l2events	71598	Number of level 2 events



2 OBI

2.1 OBI

2.1.1 Images



2.1.2 Parameters

obi_num	0	Obi number	sched_exp_time	1000.000000	[s] Scheduled observation exposure time
ascdsver	8.4.5	Processing system revision	ontime	1153.3813092709	[s]
caldbver	4.5.0	 	l1events	110807	Number of level 1 events
date	2012-07-03T23:59:25	Date and time of file creation			
revision	2	Processing version of data			

2.1.3 Events

Level 1 Events

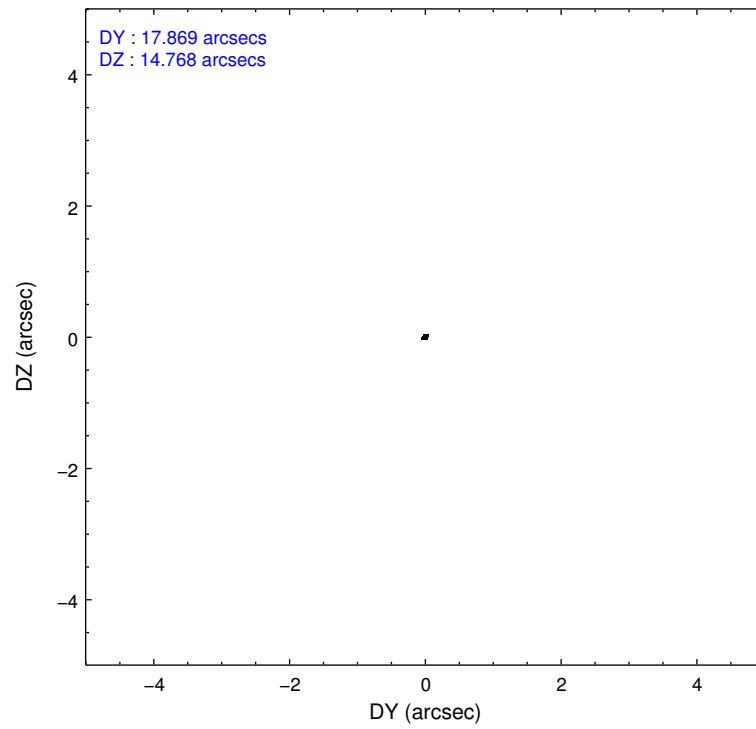
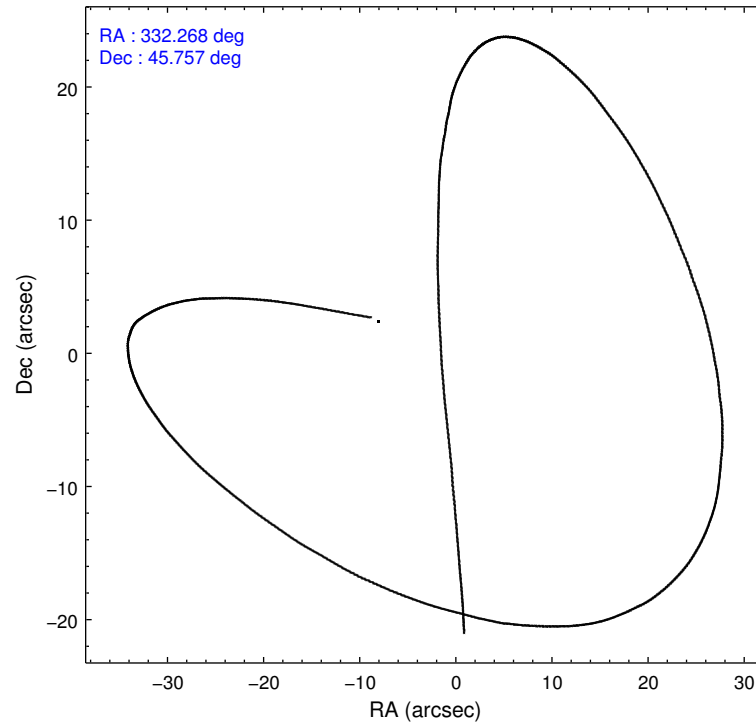
	segment 1	segment 2	segment 3
level 1 events	910	108992	905
rejected events	907	24948	868
rejected %	99%	22%	95%

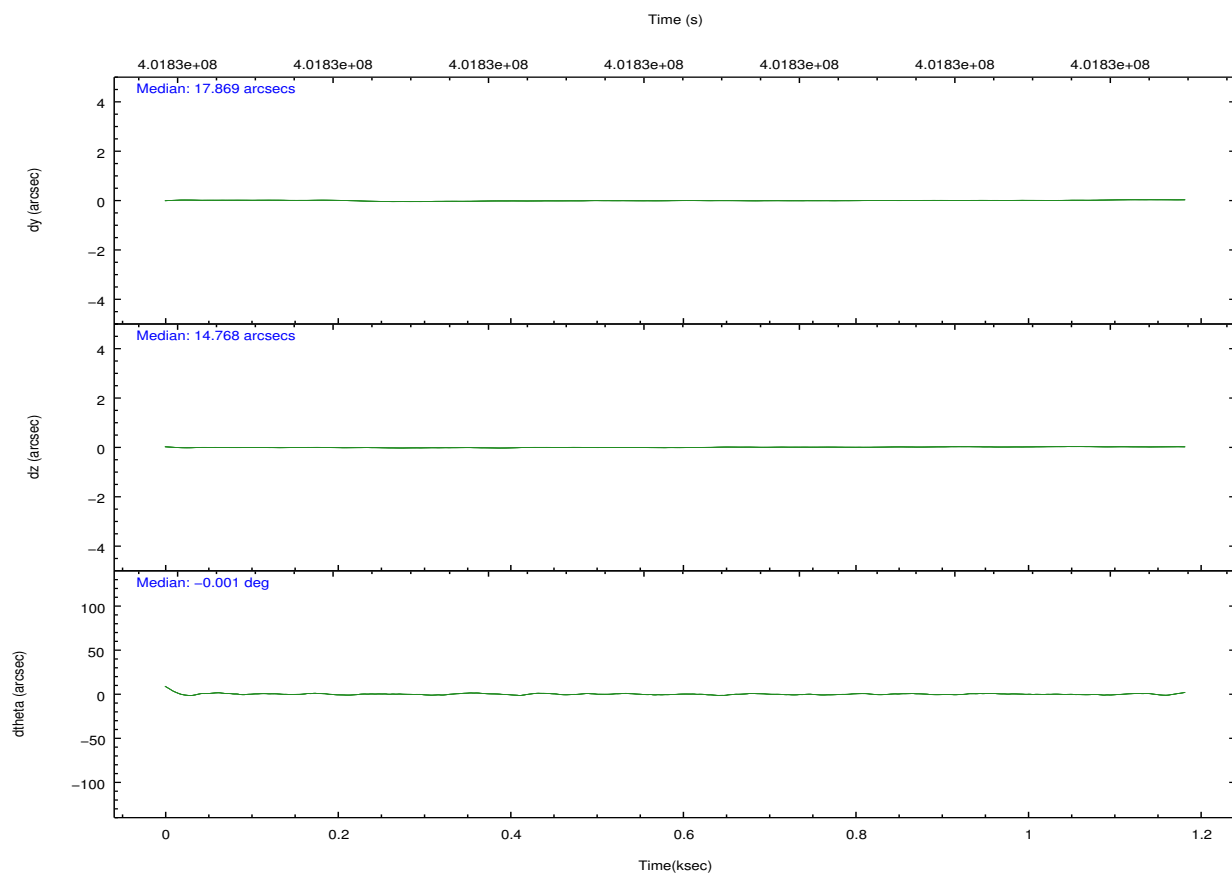
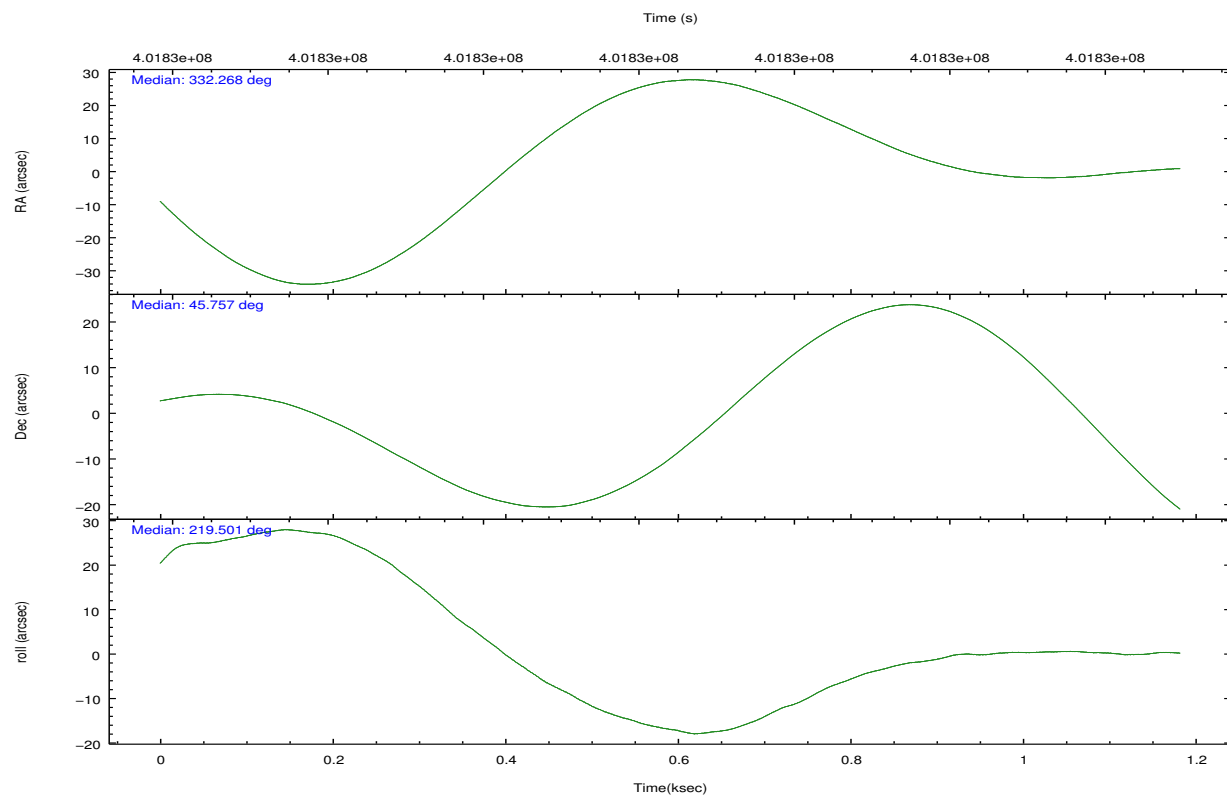
2.2 Compared Parameters

Parameter	Planned	Actual
Instrument	HRC	HRC
Detector	HRC-S	HRC-S
Grating	NONE	NONE
Data mode	OBSERVING	OBSERVING
Observation mode	POINTING	POINTING
[deg] Pointing RA	332.281259	332.2677930590542
[deg] Pointing Dec	45.783328	45.75651797804143
[deg] Pointing Roll	219.428599	219.5056262807612
[mm] SIM focus pos	-1.533336	-1.526339935833849
[mm] SIM defocus	7.710433287538843e-07	0.006996703570447904
[mm] SIM translation stage pos	250.455976	250.466033080201
[mm] SIM translation stage offset	0	-0.01005468664627074
[s] Observation start time (MET)	401831829.184000	401831453.29016
Observation start date	2010-09-25T19:56:03	2010-09-25T19:50:53
[s] Observation end time (MET)	401832829.184000	401832963.11523
Observation end date	2010-09-25T20:12:43	2010-09-25T20:16:03

Parameter	Planned	Actual
Obspar format version number	7	7
Obspar file type	PREDICTED	ACTUAL
Obspar update status	NONE	UPDATED

2.3 Aspect



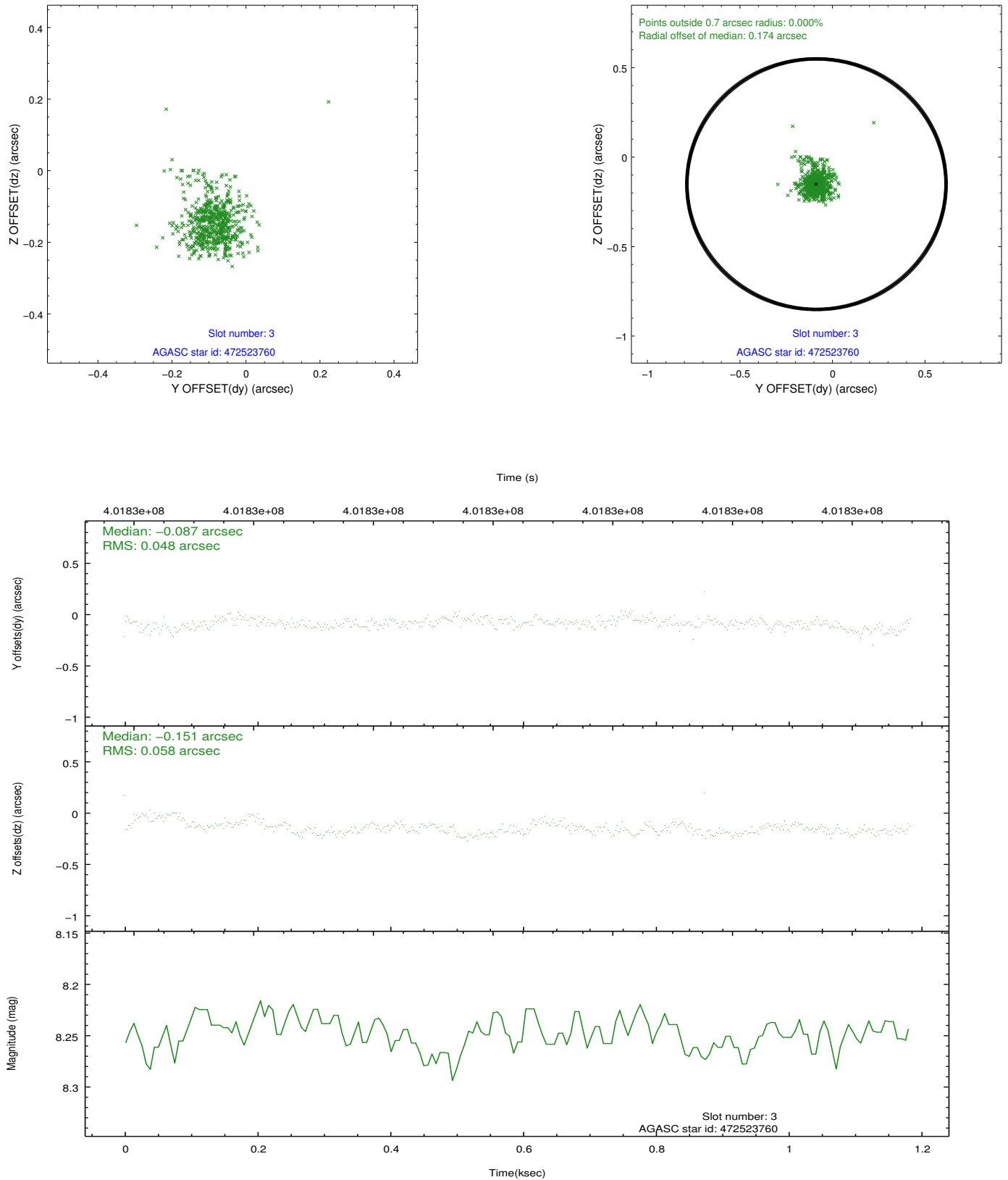


Slot Statistics

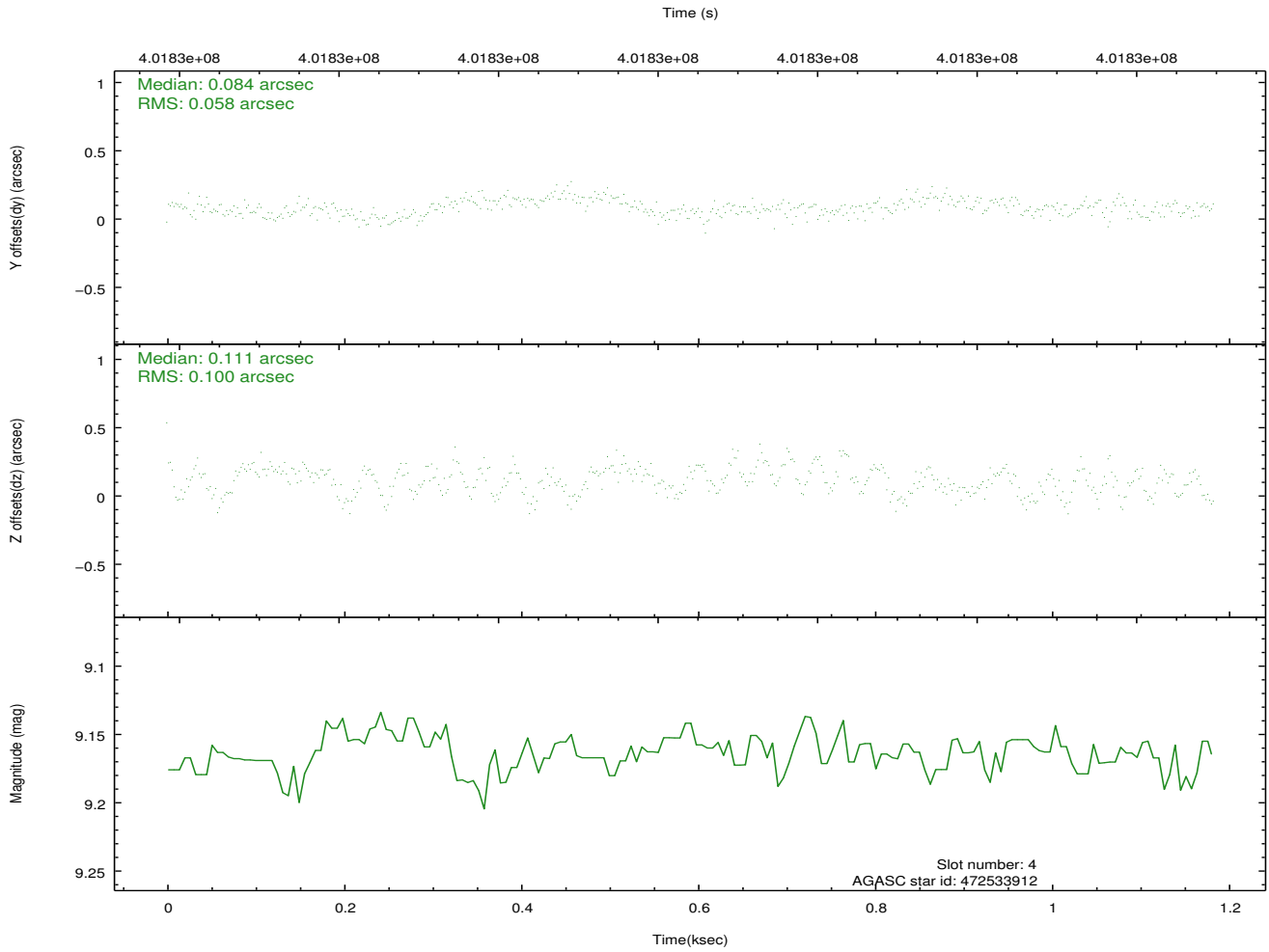
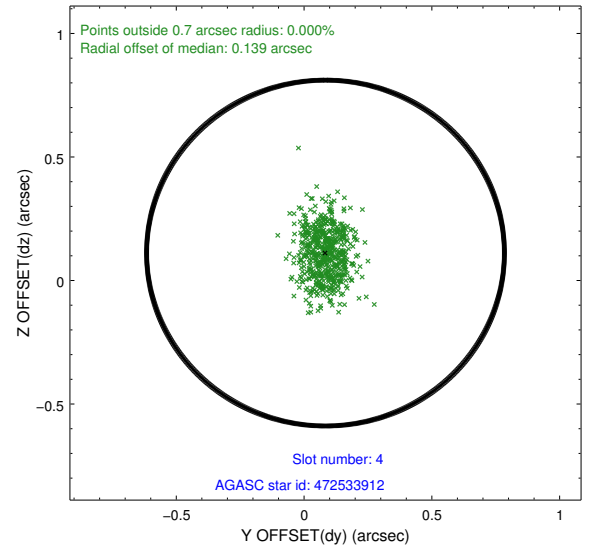
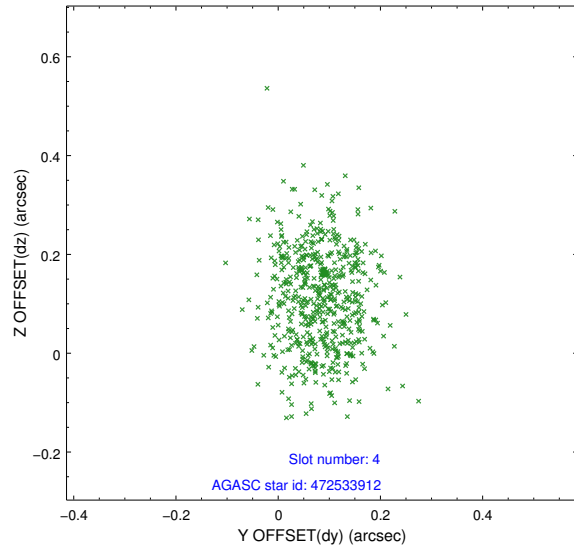
slot	status	id	mag	n_pts	med_dy	med_dz	dr1	dr2	ra	dec	mean_y	mean_z
0	FID	HRC-S-2	6.97	289	0.182	-0.132	0.008	0.014	0.000000	0.000000	1227.40	-456.29
1	FID	HRC-S-3	7.01	289	-0.005	-0.078	0.005	0.009	0.000000	0.000000	-1170.88	564.45
2	FID	HRC-S-4	6.93	289	0.228	-0.085	0.008	0.014	0.000000	0.000000	1222.01	570.43
3	GUIDE	472523760	8.25	578	-0.087	-0.151	0.071	0.135	331.645363	45.403260	2106.18	34.55
4	GUIDE	472533912	9.16	578	0.084	0.111	0.121	0.208	331.791136	46.368695	-396.77	-2400.29
5	GUIDE	472654568	9.41	578	-0.101	0.061	0.108	0.179	332.194449	45.063576	1814.92	1860.66
6	GUIDE	472655152	9.43	576	0.015	-0.169	0.120	0.201	332.504239	45.862991	-611.61	139.49
7	GUIDE	472665256	9.02	577	0.082	0.141	0.091	0.152	332.808125	46.195041	-1959.46	-310.62

2.4 Star Slots

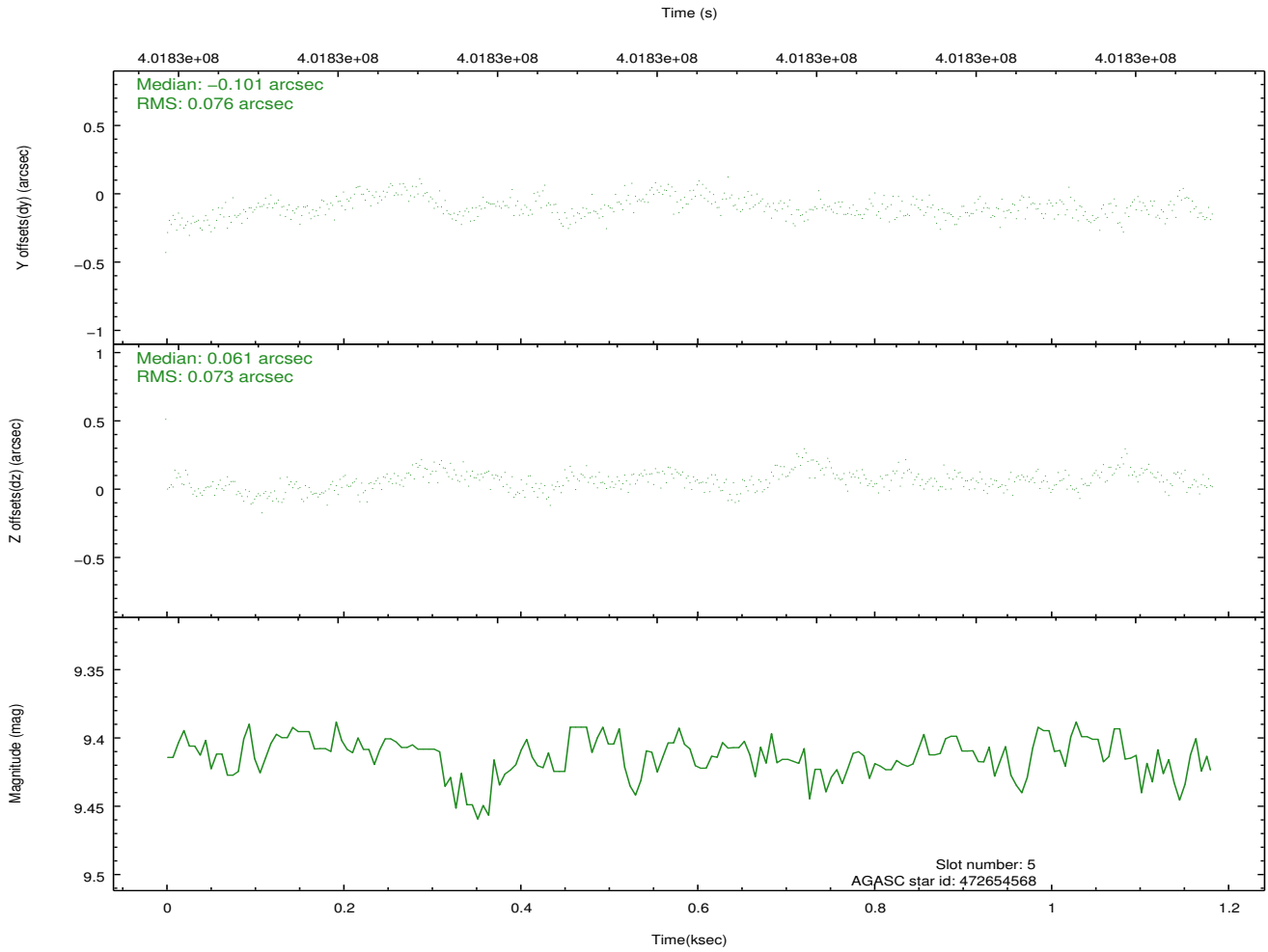
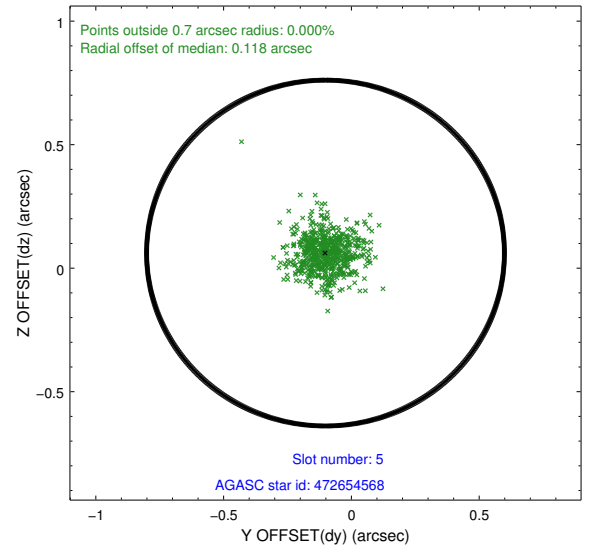
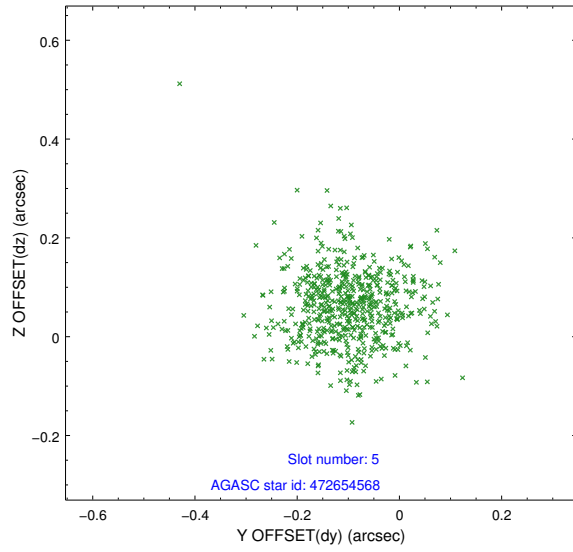
2.4.1 Slot 3



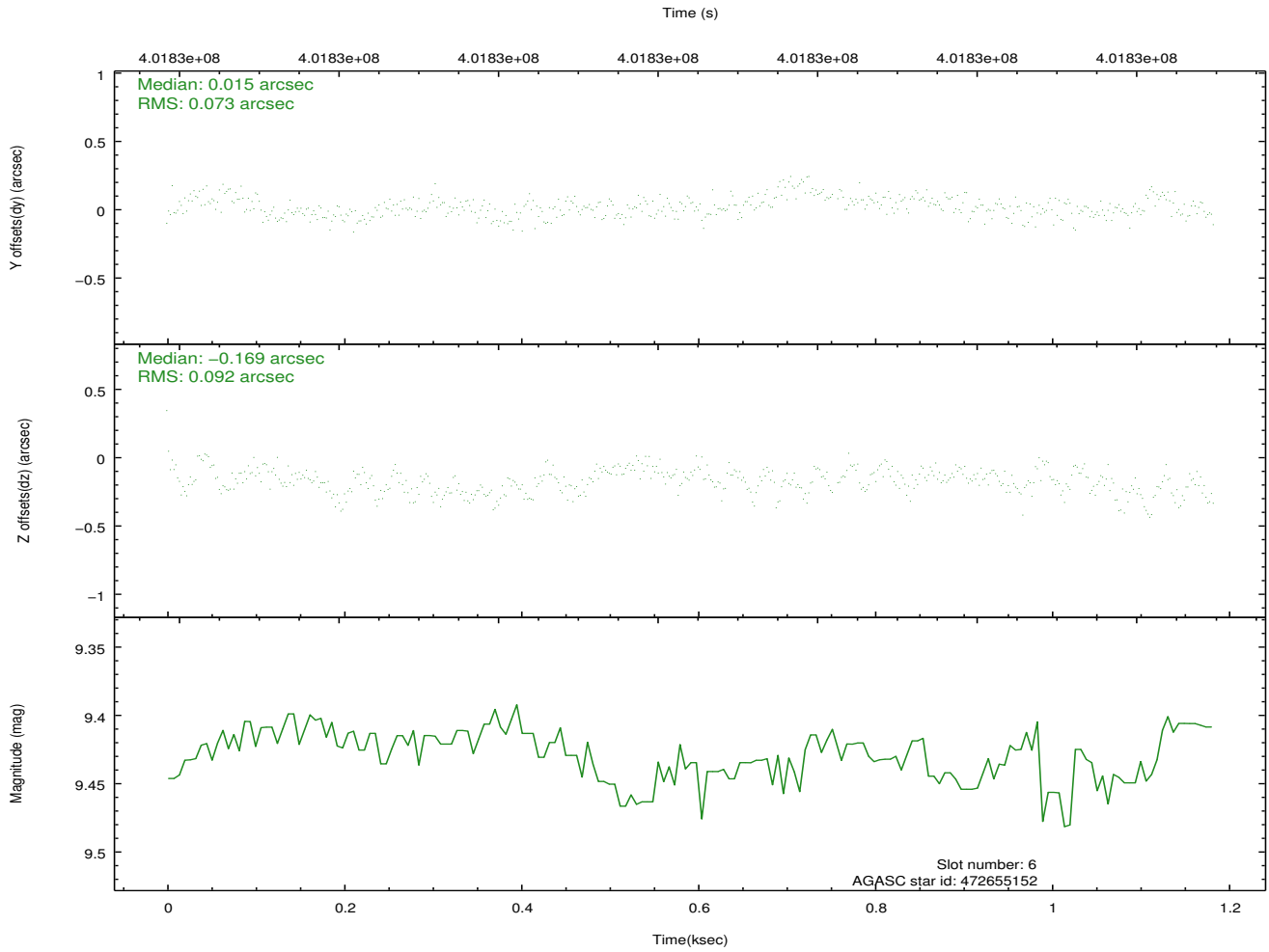
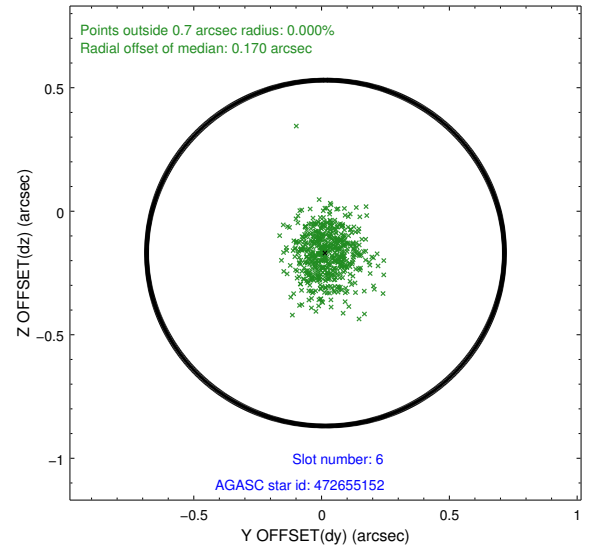
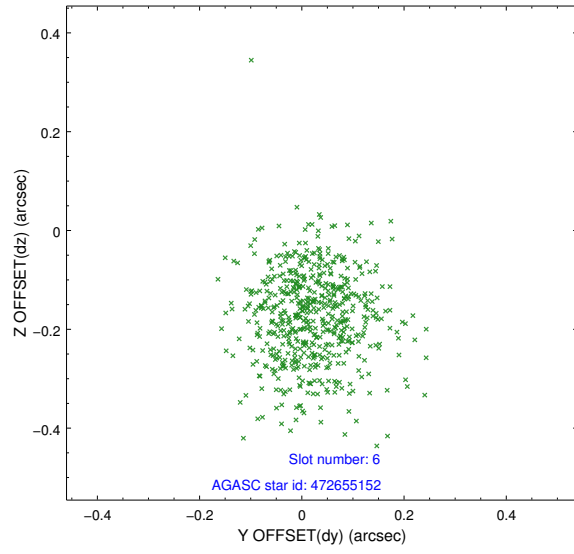
2.4.2 Slot 4



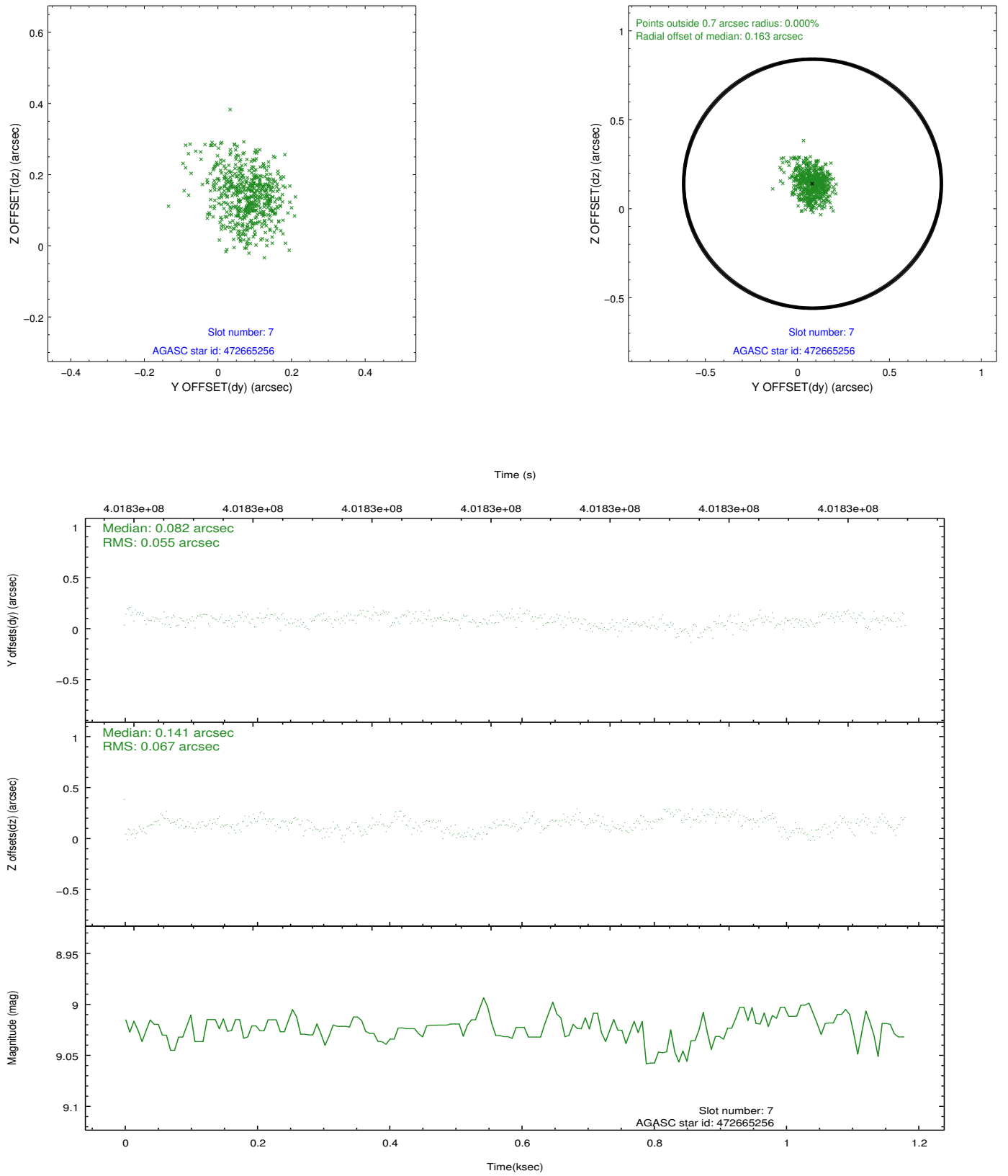
2.4.3 Slot 5



2.4.4 Slot 6

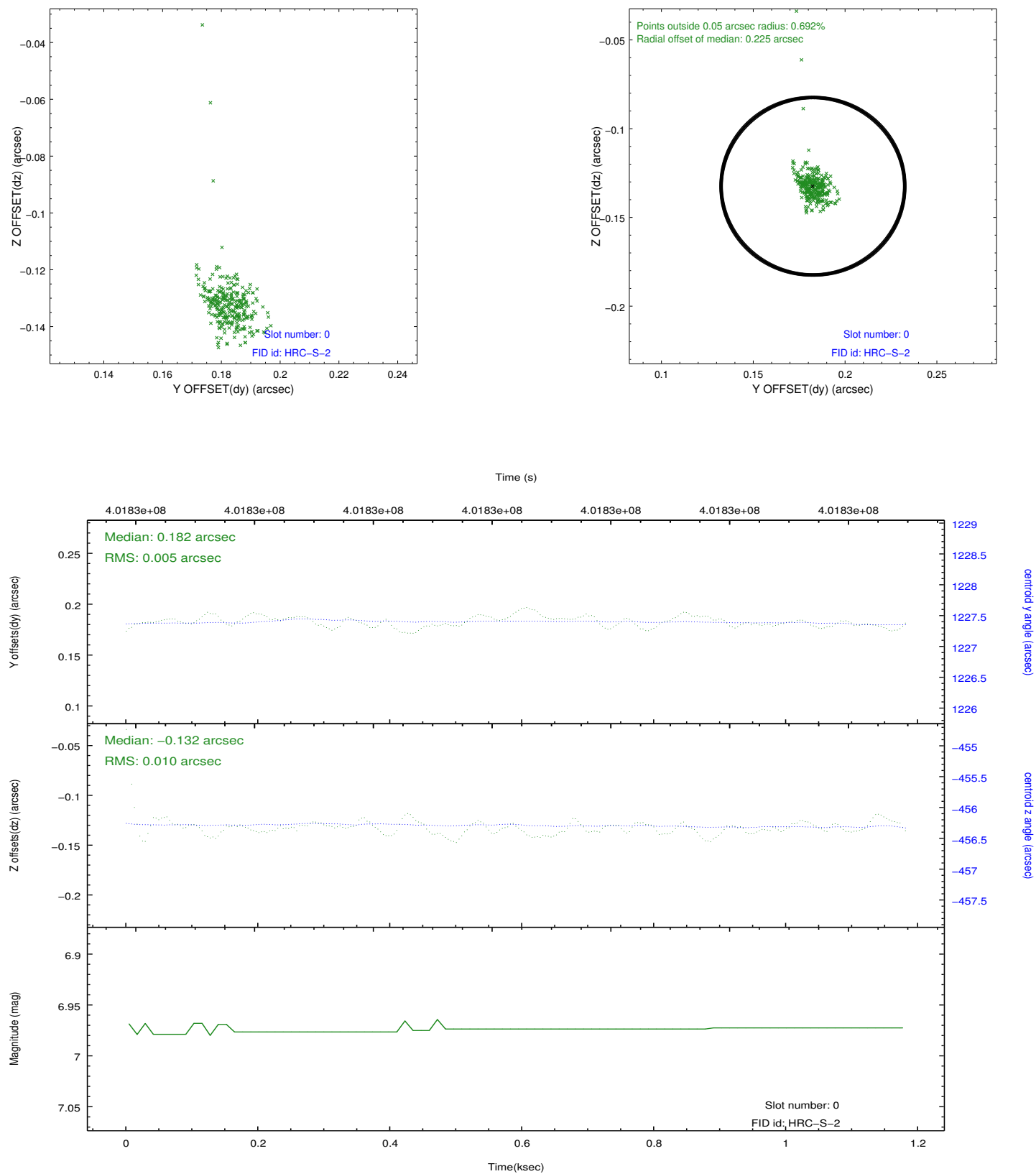


2.4.5 Slot 7

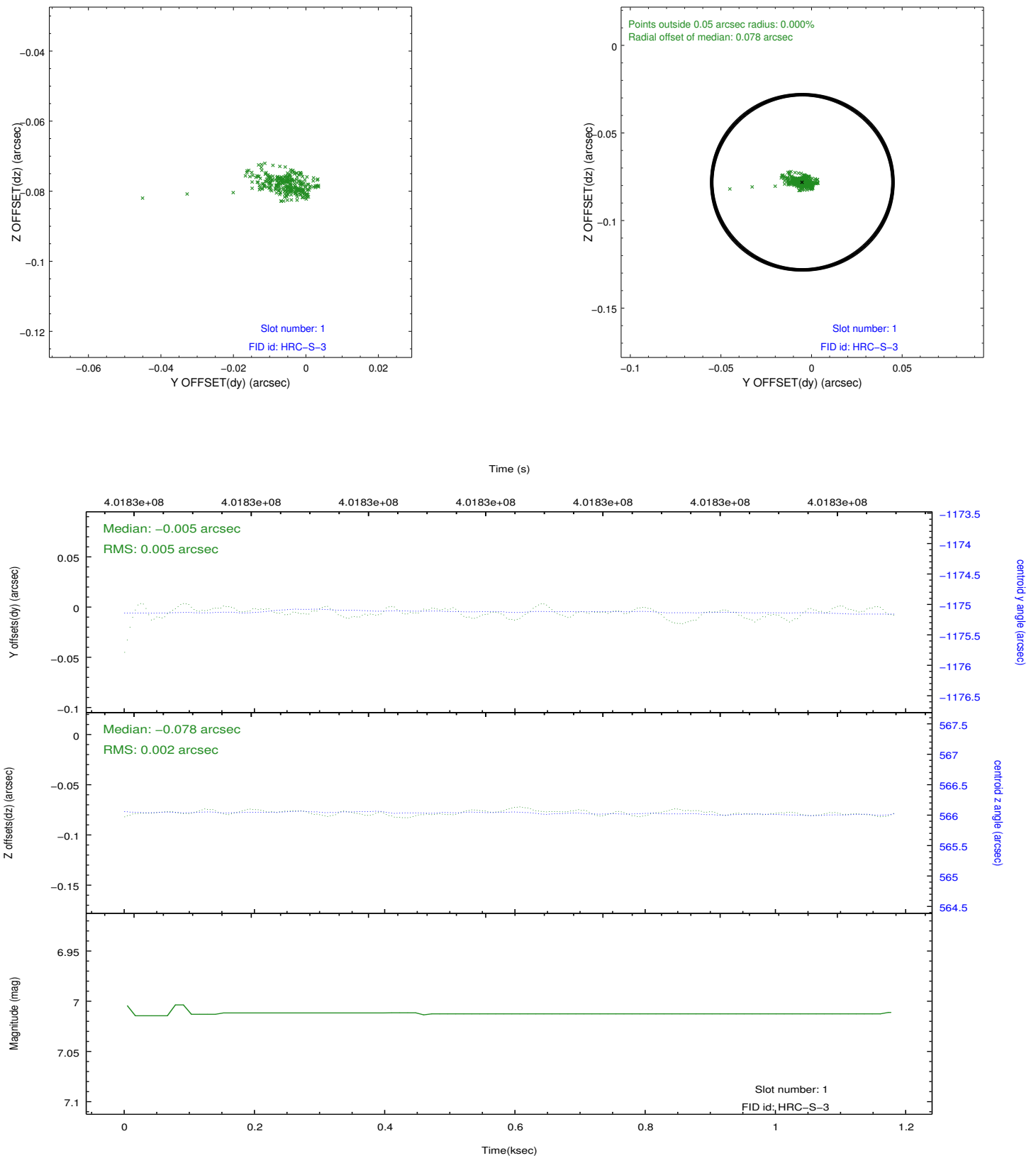


2.5 FID Slots

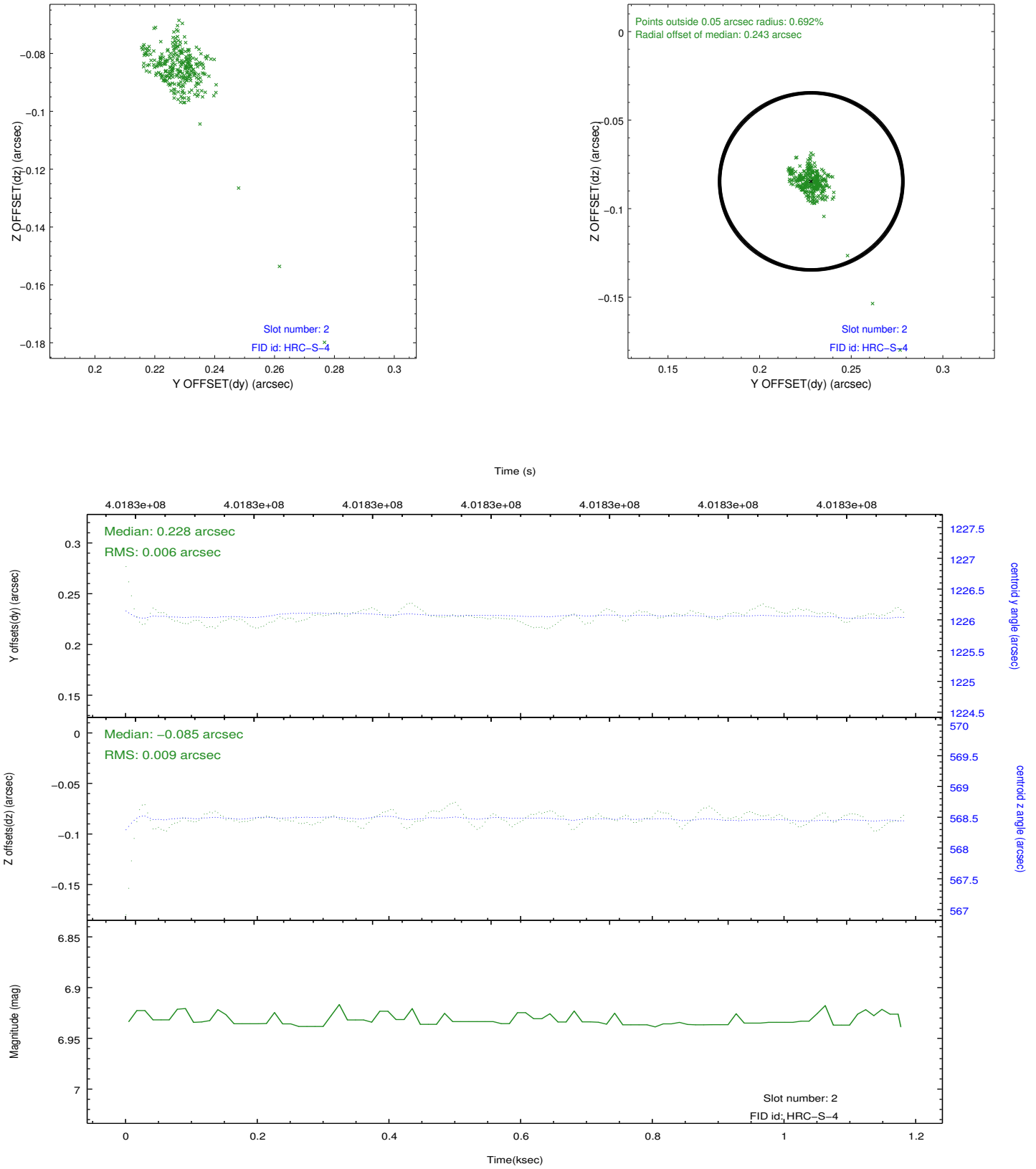
2.5.1 Slot 0



2.5.2 Slot 1



2.5.3 Slot 2



A Summary

A.1 Status

V&V Scientist	Jen Lauer
V&V Date (YYYY-MM-DD)	2012.07.12
V&V Edition	1
V&V Disposition and Status	OK
V&V Charge Time	1.1533813092113

A.2 Comments