

# V&V Reference Report

## L2 ASCDS Version : 8.4.5

Observation 11915 - L2 Version 2  
Chandra X-Ray Center

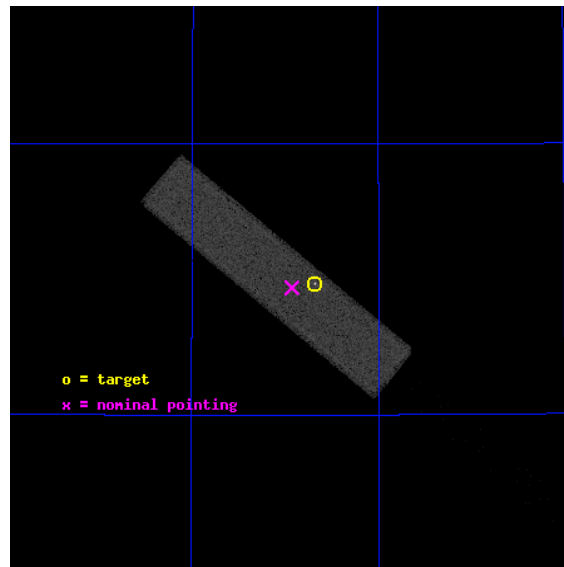
L2 Processing Date : Jul 3 2012

## Contents

<b>1</b>	<b>Front</b>	<b>2</b>
<b>2</b>	<b>OBI</b>	<b>3</b>
2.1	OBI . . . . .	3
2.1.1	Images . . . . .	3
2.1.2	Parameters . . . . .	4
2.1.3	Events . . . . .	4
2.2	Compared Parameters . . . . .	5
2.3	Aspect . . . . .	6
2.4	Star Slots . . . . .	9
2.4.1	Slot 3 . . . . .	9
2.4.2	Slot 4 . . . . .	10
2.4.3	Slot 5 . . . . .	11
2.4.4	Slot 6 . . . . .	12
2.4.5	Slot 7 . . . . .	13
2.5	FID Slots . . . . .	14
2.5.1	Slot 0 . . . . .	14
2.5.2	Slot 1 . . . . .	15
2.5.3	Slot 2 . . . . .	16
<b>A</b>	<b>Summary</b>	<b>17</b>
A.1	Status . . . . .	17
A.2	Comments . . . . .	17

# 1 Front

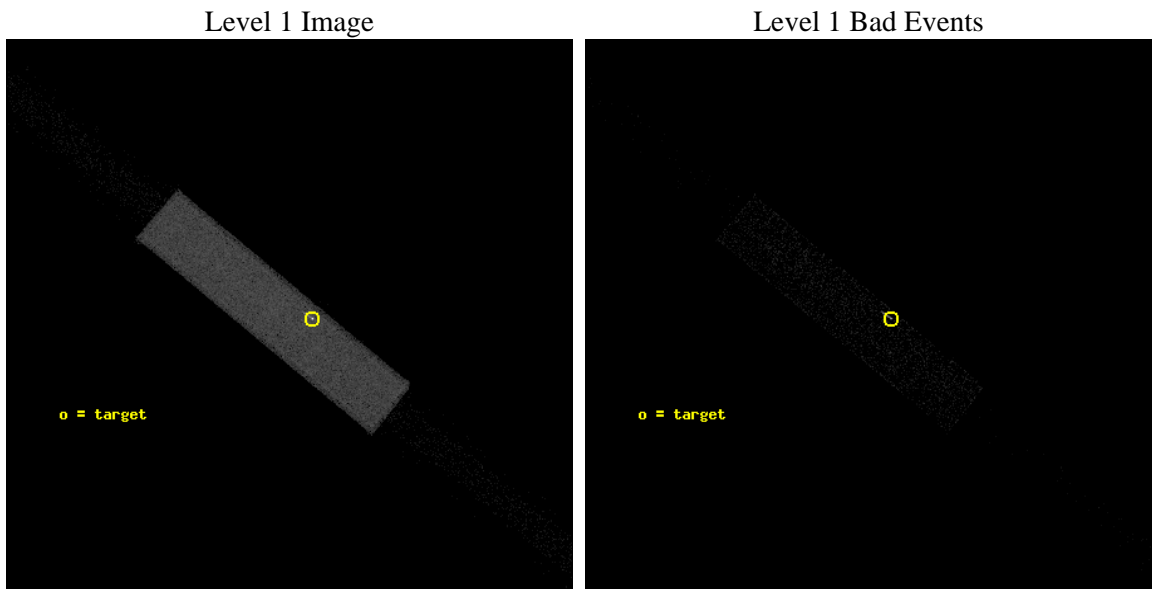
seq_num	290904	Sequence number
obs_id	11915	Observation id
title	AO-11 Calibration Observations to Monitor the Spatial Variations in the HRC-S Gain	Proposal title
observer	Dr. CXC Calibration	Principal investigator
object	ArLac	Source name
ra_targ	332.17	Observer's specified target RA [deg]
dec_targ	45.742306	Observer's specified target Dec [deg]
ra_nom	332.23194792673	Nominal RA [deg]
dec_nom	45.735140657703	Nominal Dec [deg]
roll_nom	219.49429219599	Nominal Roll [deg]
revision	2	Processing version of data
ontime	1157.4813094139	[s]
livetime	1147.5757373823	Ontime multiplied by DTCOR
l2events	73858	Number of level 2 events



## 2 OBI

### 2.1 OBI

#### 2.1.1 Images



### 2.1.2 Parameters

obi_num	0	Obi number	sched_exp_time	1000.000000	[s] Scheduled observation exposure time
ascdsver	8.4.5	Processing system revision	ontime	1157.4813094139	[s]
caldsver	4.5.0	&#160	l1events	113133	Number of level 1 events
date	2012-07-03T23:59:19	Date and time of file creation			
revision	2	Processing version of data			

### 2.1.3 Events

Level 1 Events

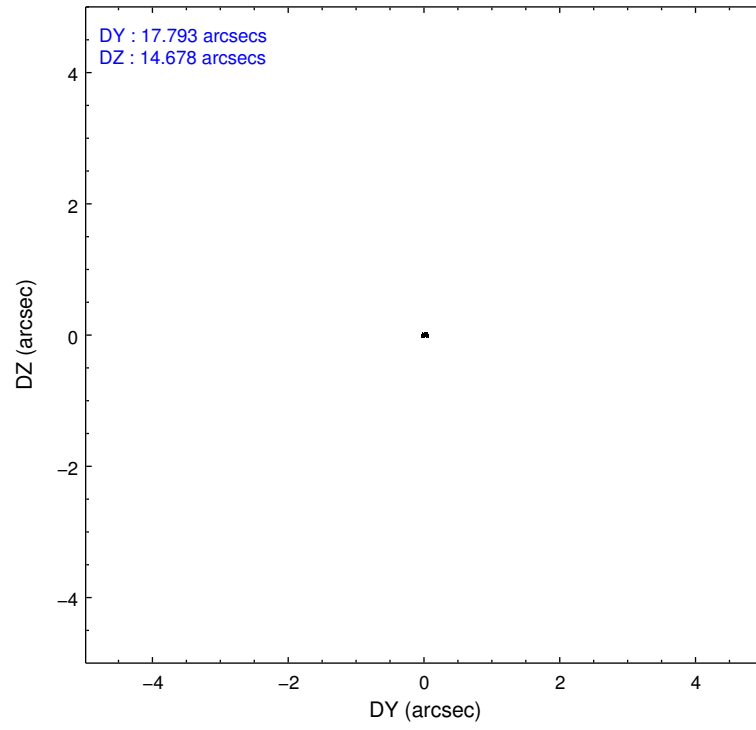
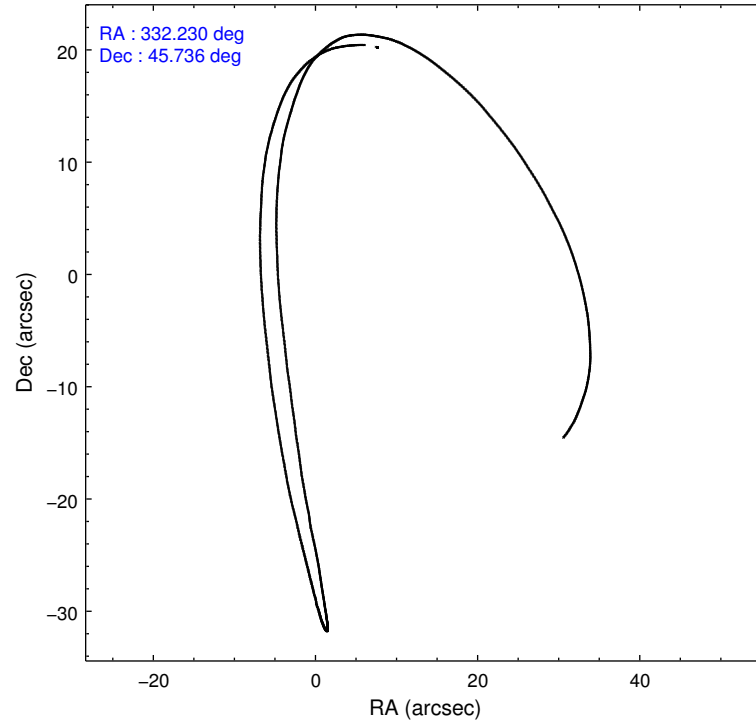
	<b>segment 1</b>	<b>segment 2</b>	<b>segment 3</b>
level 1 events	953	111330	850
rejected events	953	24740	817
rejected %	100%	22%	96%

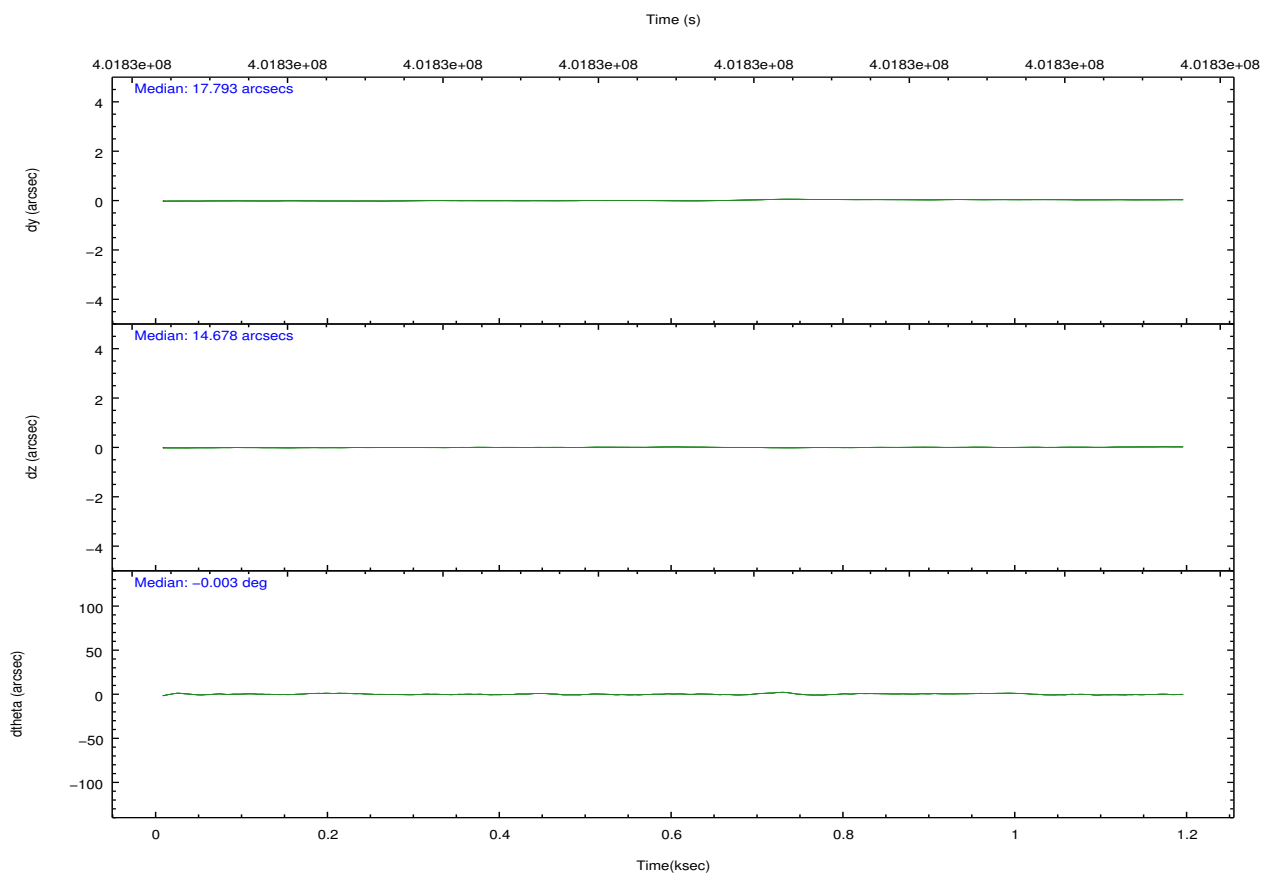
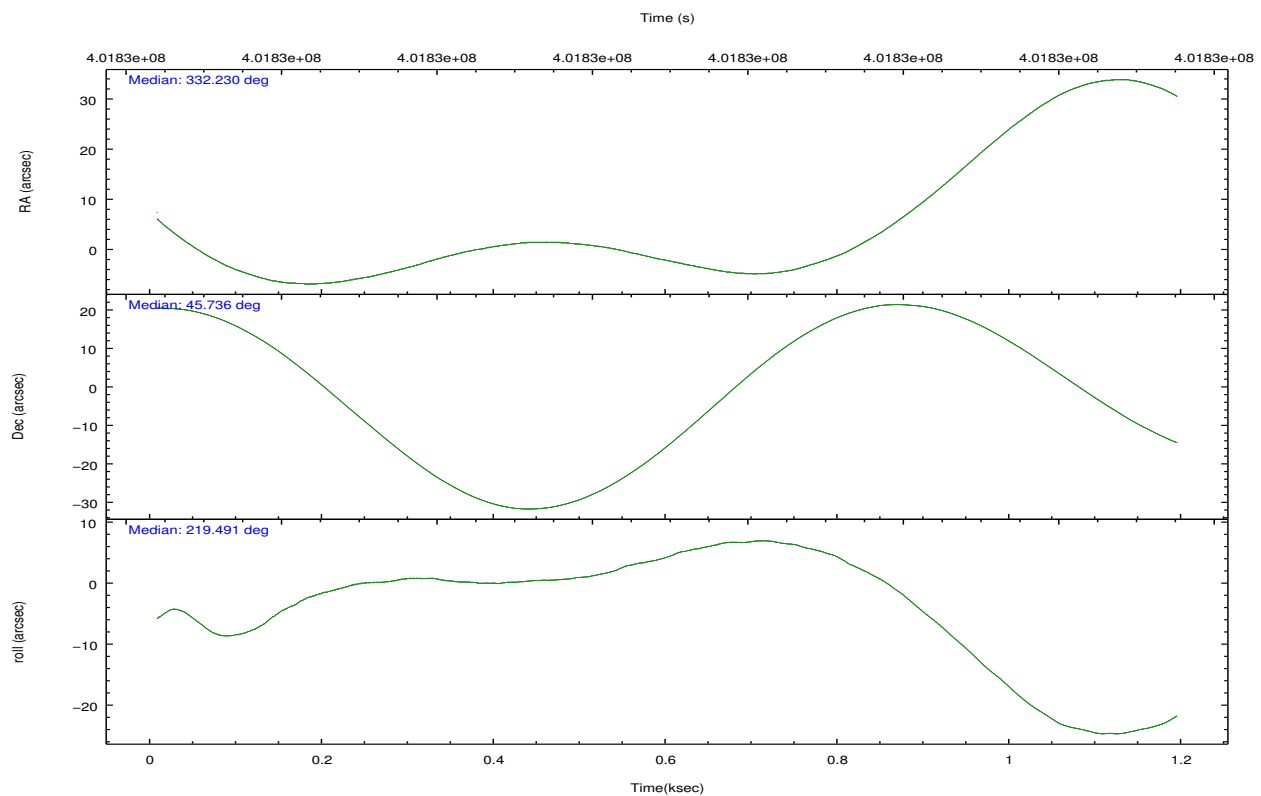
## 2.2 Compared Parameters

Parameter	Planned	Actual
Instrument	HRC	HRC
Detector	HRC-S	HRC-S
Grating	NONE	NONE
Data mode	OBSERVING	OBSERVING
Observation mode	POINTING	POINTING
[deg] Pointing RA	332.244380	332.2319479267254
[deg] Pointing Dec	45.762119	45.73514065770313
[deg] Pointing Roll	219.418040	219.494292195988
[mm] SIM focus pos	-1.533336	-1.526339935833849
[mm] SIM defocus	7.710433287538843e-07	0.006996703570447904
[mm] SIM translation stage pos	250.455976	250.466033080201
[mm] SIM translation stage offset	0	-0.01005468664627074
[s] Observation start time (MET)	401827299.184000	401826923.81492
Observation start date	2010-09-25T18:40:33	2010-09-25T18:35:23
[s] Observation end time (MET)	401828299.184000	401828433.64
Observation end date	2010-09-25T18:57:13	2010-09-25T19:00:33

Parameter	Planned	Actual
Obspar format version number	7	7
Obspar file type	PREDICTED	ACTUAL
Obspar update status	NONE	UPDATED

## 2.3 Aspect



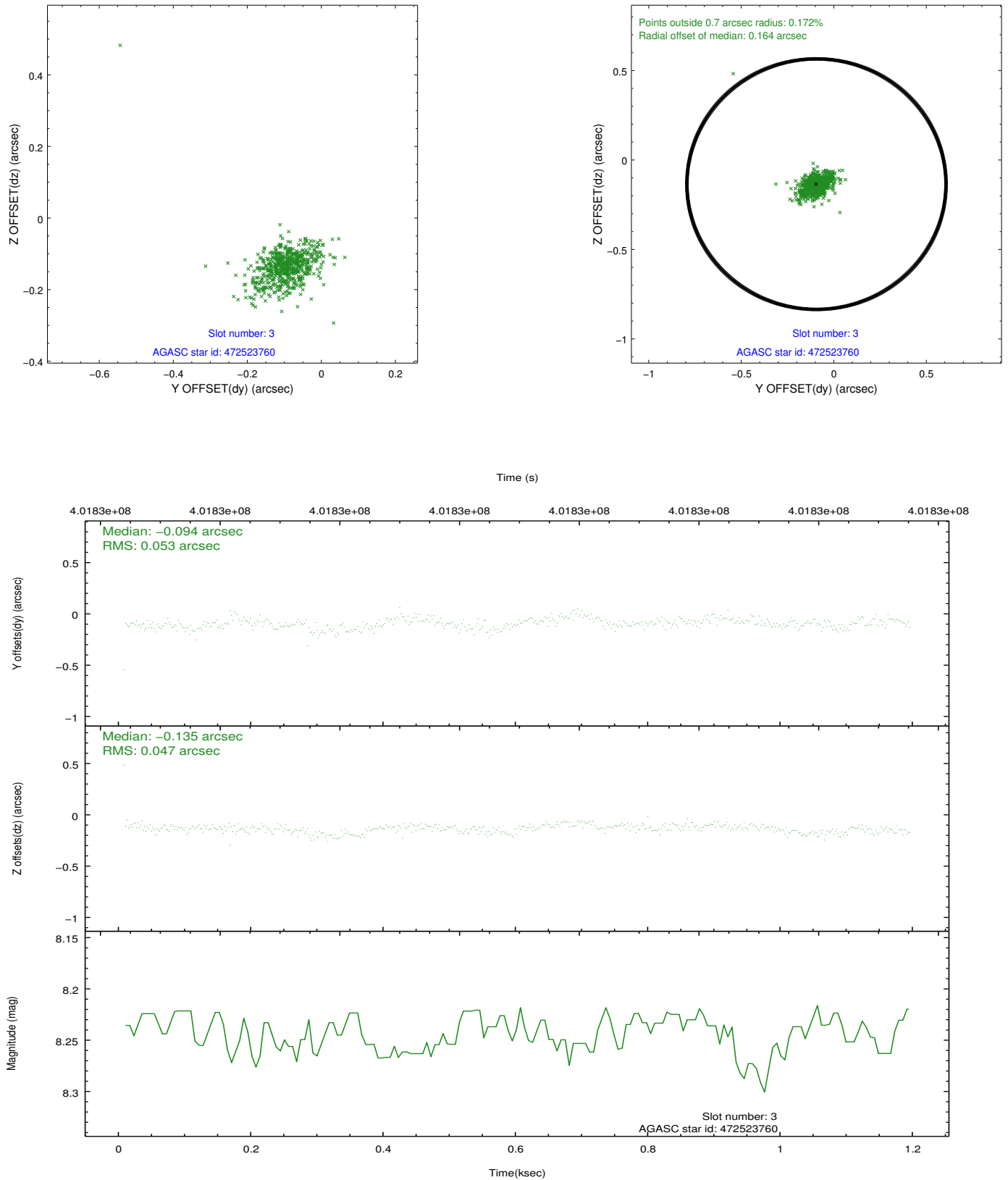


Slot Statistics

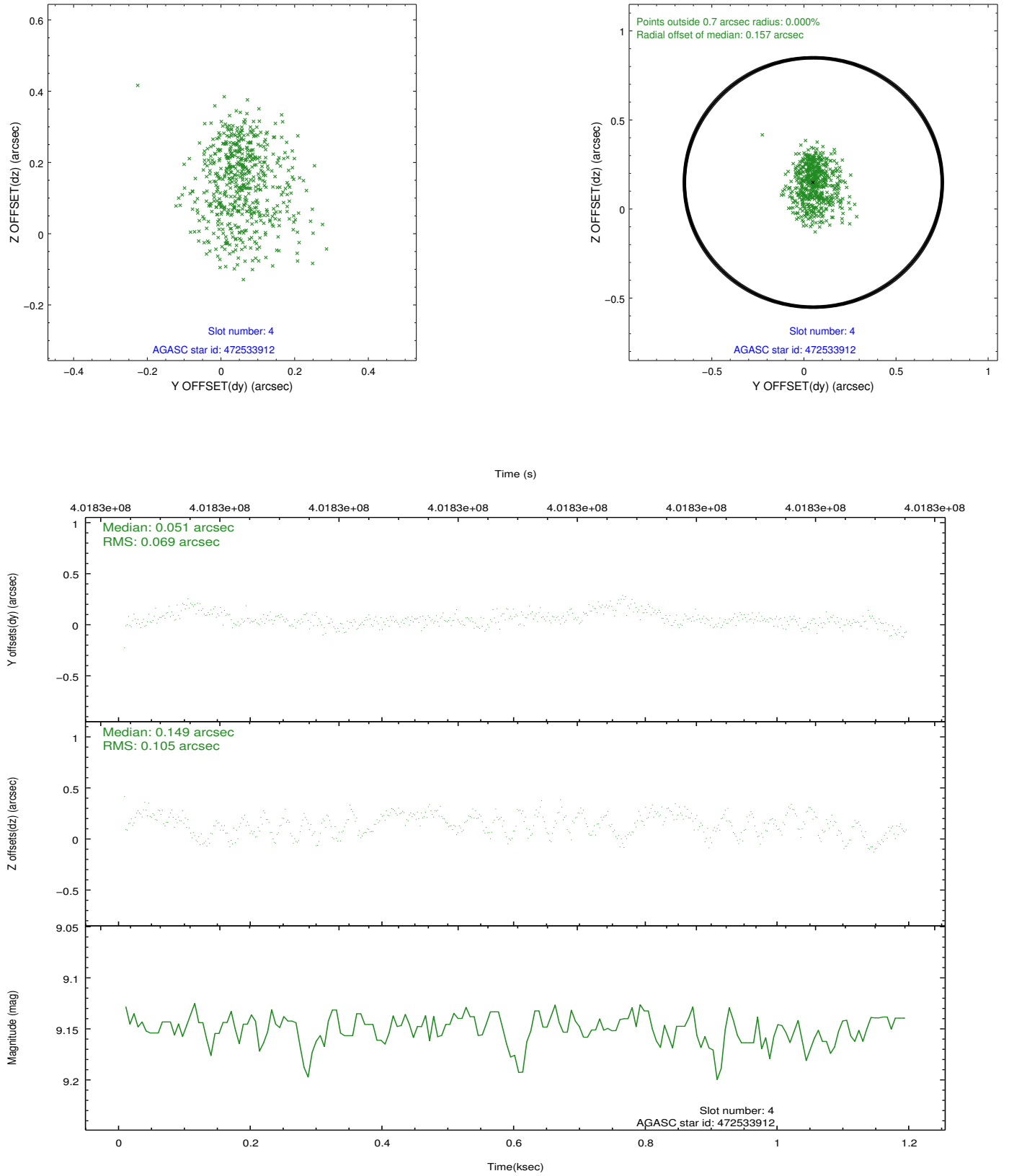
slot	status	id	mag	n_pts	med_dy	med_dz	dr1	dr2	ra	dec	mean_y	mean_z
0	FID	HRC-S-1	7.00	290	0.057	-0.215	0.007	0.011	0.000000	0.000000	-1172.30	-463.58
1	FID	HRC-S-2	6.98	290	0.246	-0.119	0.005	0.012	0.000000	0.000000	1223.50	-457.73
2	FID	HRC-S-3	7.01	290	0.086	0.032	0.007	0.011	0.000000	0.000000	-1170.77	564.61
3	GUIDE	472523760	8.24	580	-0.094	-0.135	0.063	0.116	331.645363	45.403260	1987.70	33.54
4	GUIDE	472533912	9.15	580	0.051	0.149	0.137	0.219	331.791136	46.368695	-513.91	-2402.90
5	GUIDE	472654568	9.41	578	-0.082	0.060	0.110	0.165	332.194449	45.063576	1695.06	1859.39
6	GUIDE	472655152	9.43	578	0.025	-0.184	0.130	0.218	332.504239	45.862991	-730.32	136.65
7	GUIDE	472665256	9.03	578	0.093	0.104	0.091	0.160	332.808125	46.195041	-2077.90	-314.27

## 2.4 Star Slots

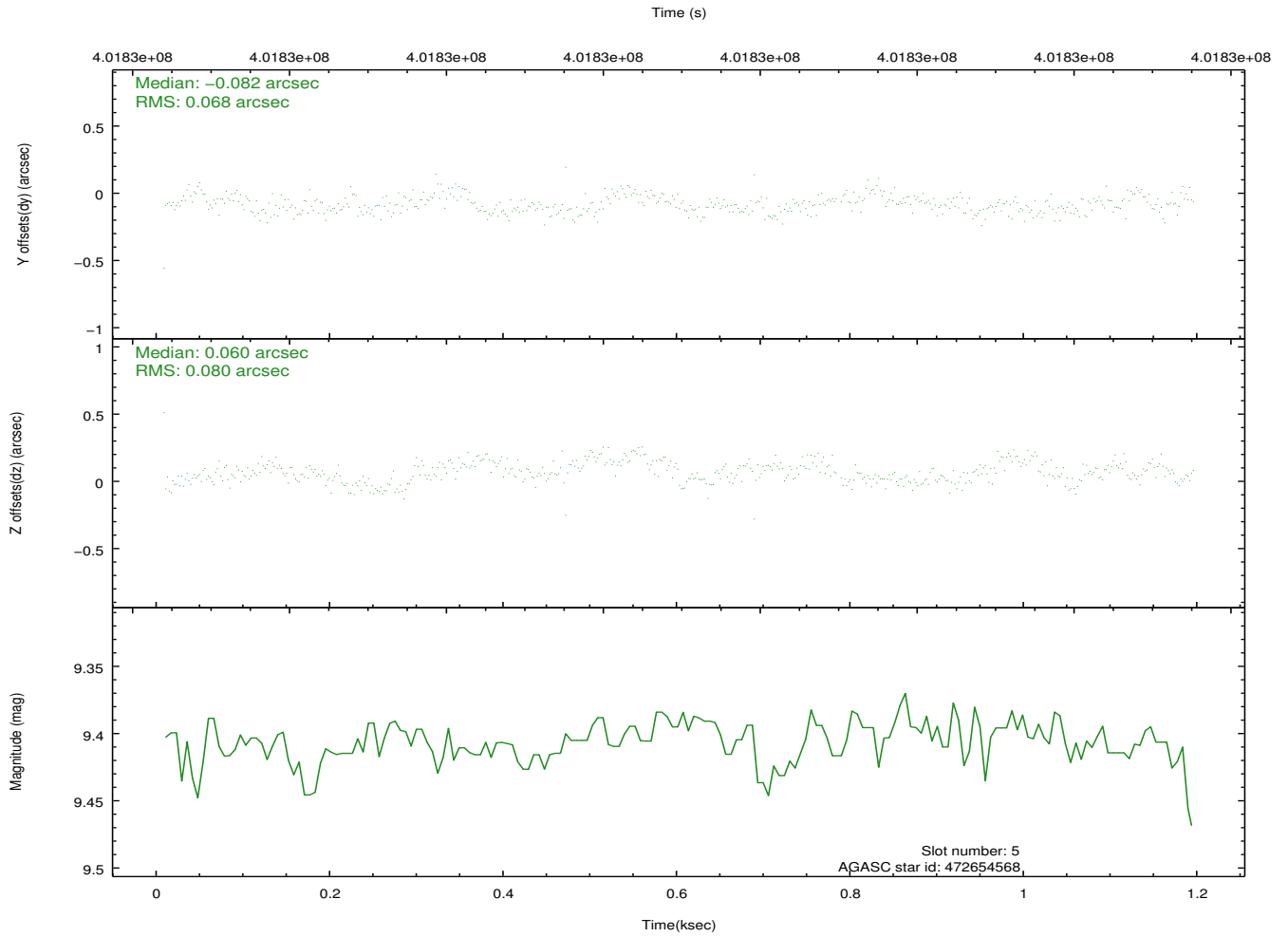
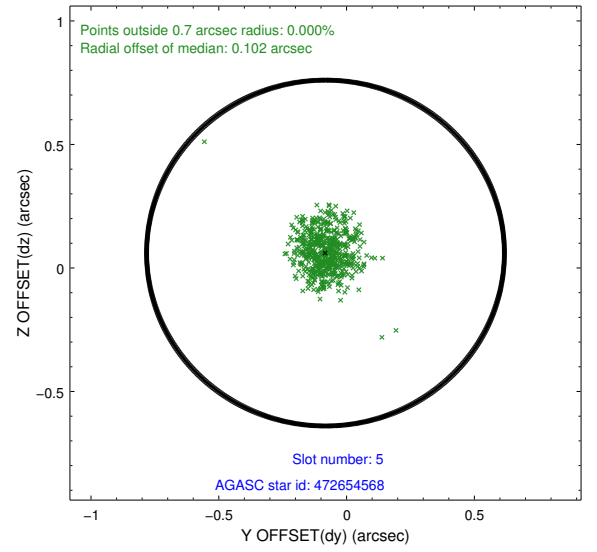
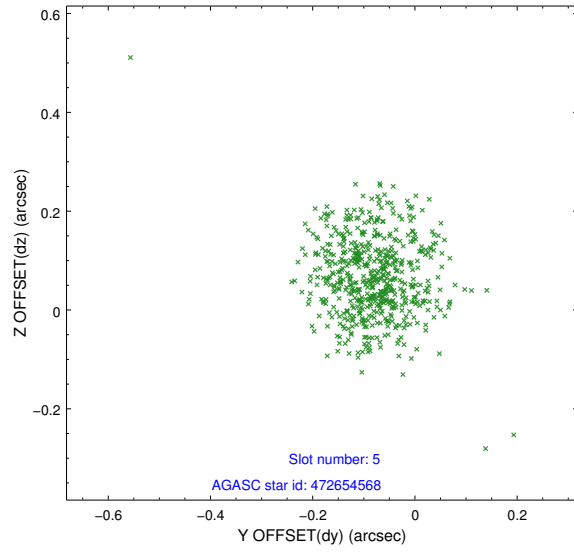
### 2.4.1 Slot 3



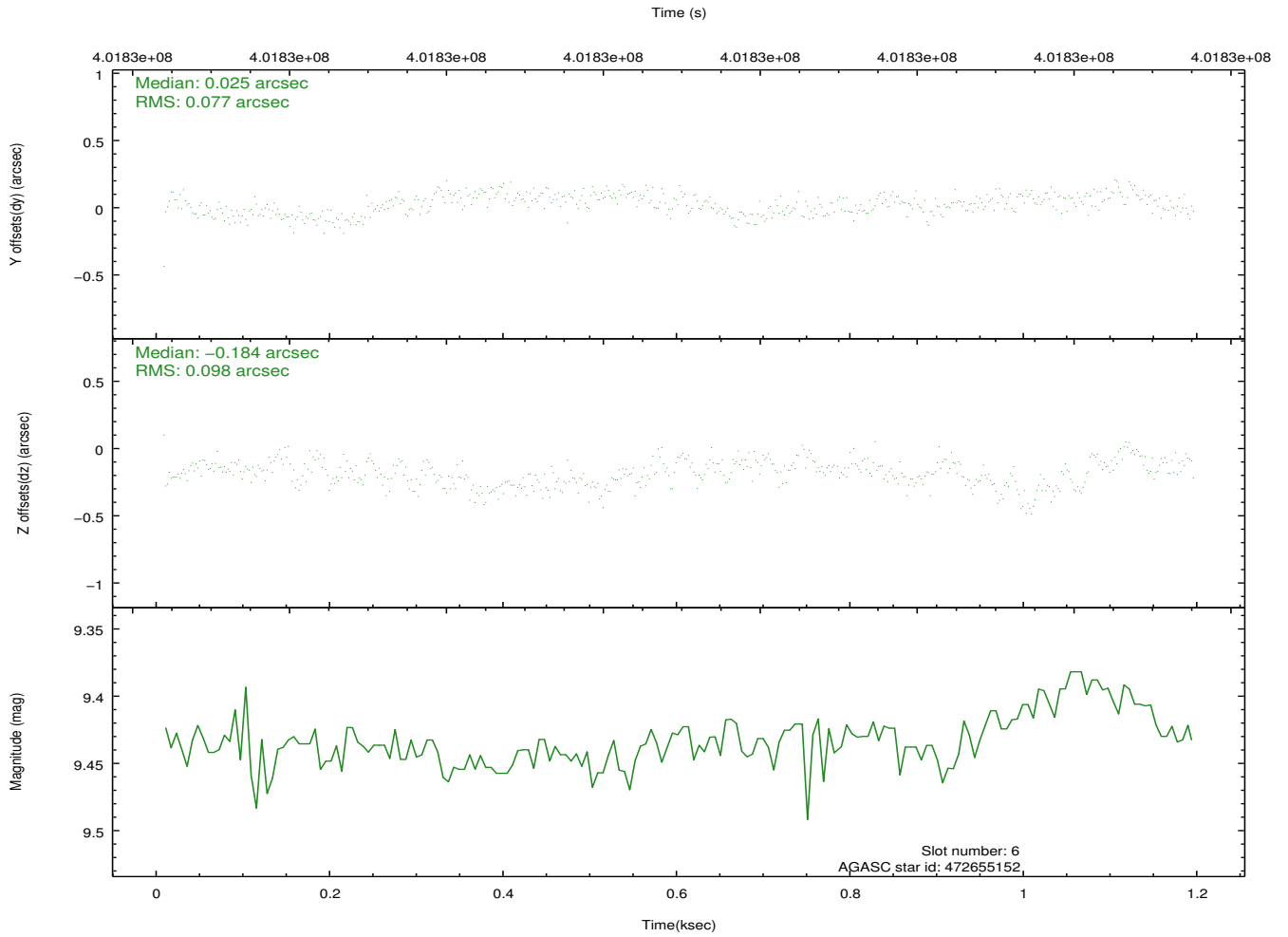
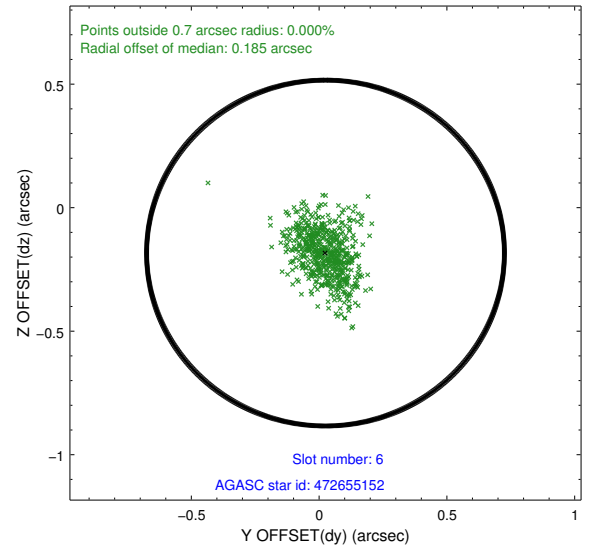
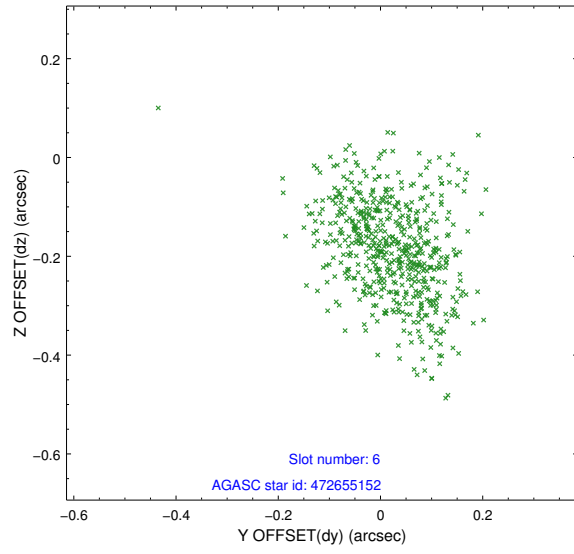
## 2.4.2 Slot 4



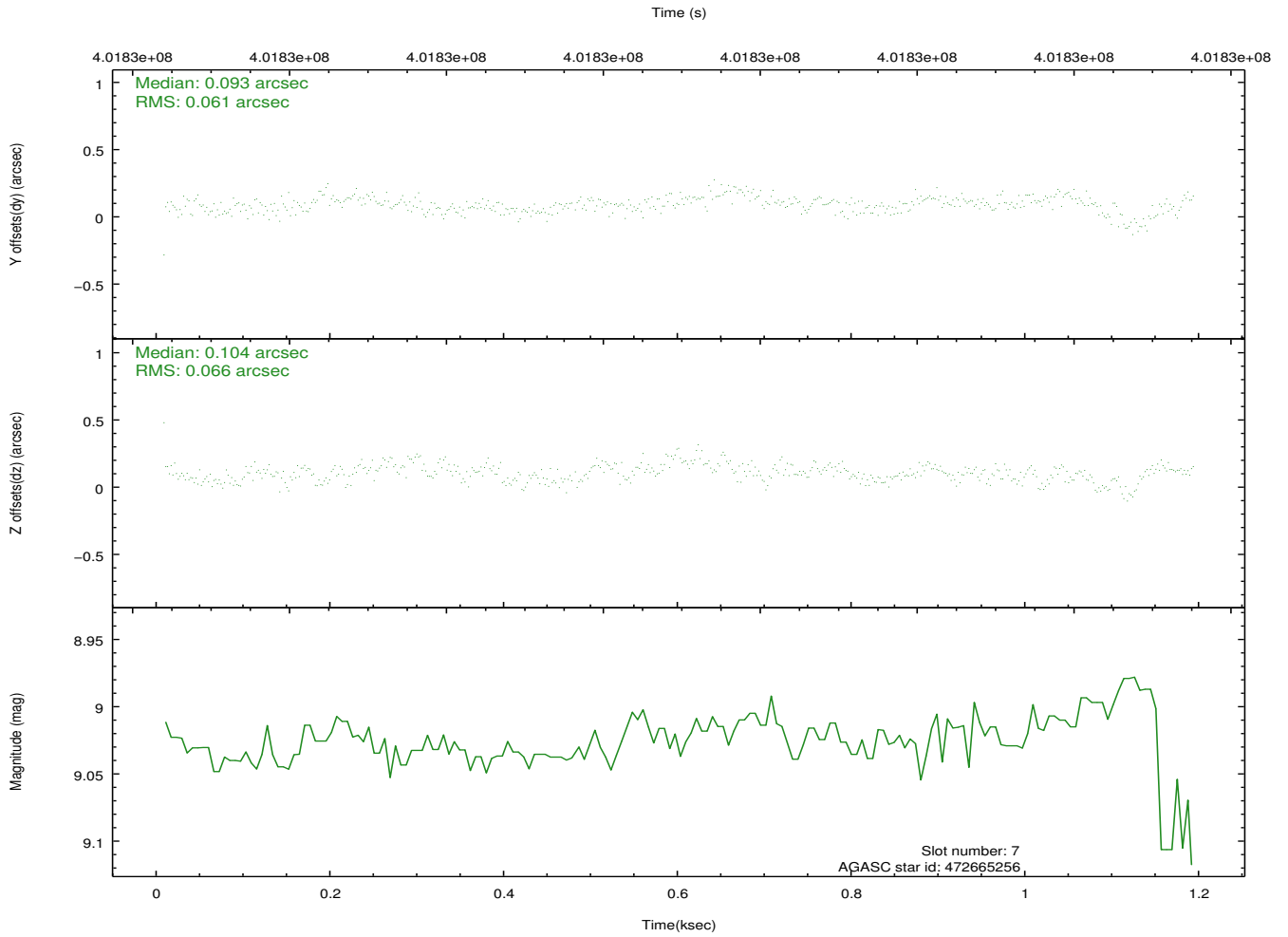
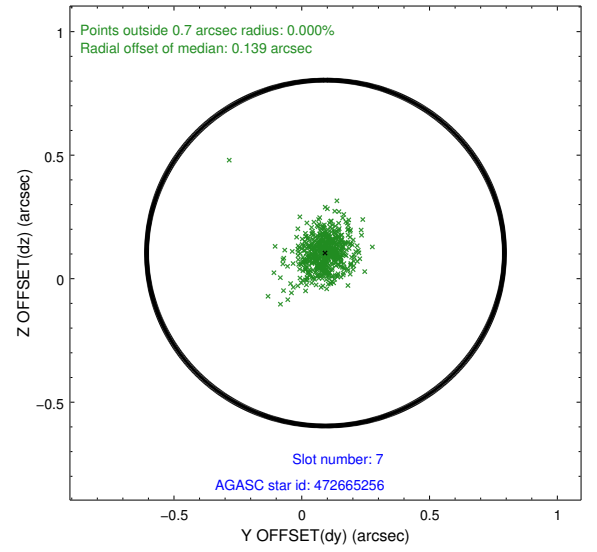
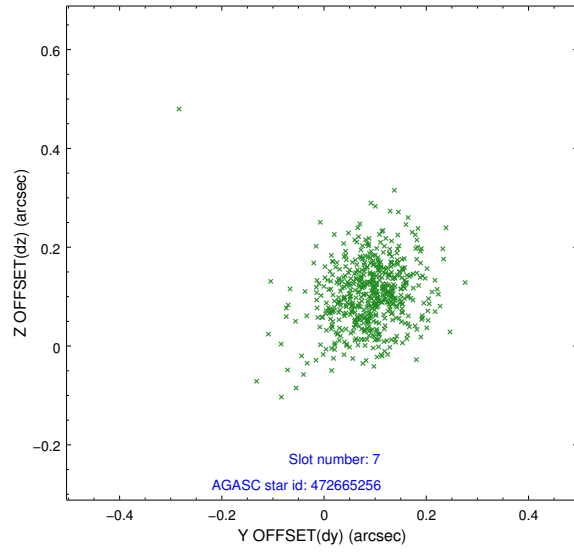
### 2.4.3 Slot 5



## 2.4.4 Slot 6

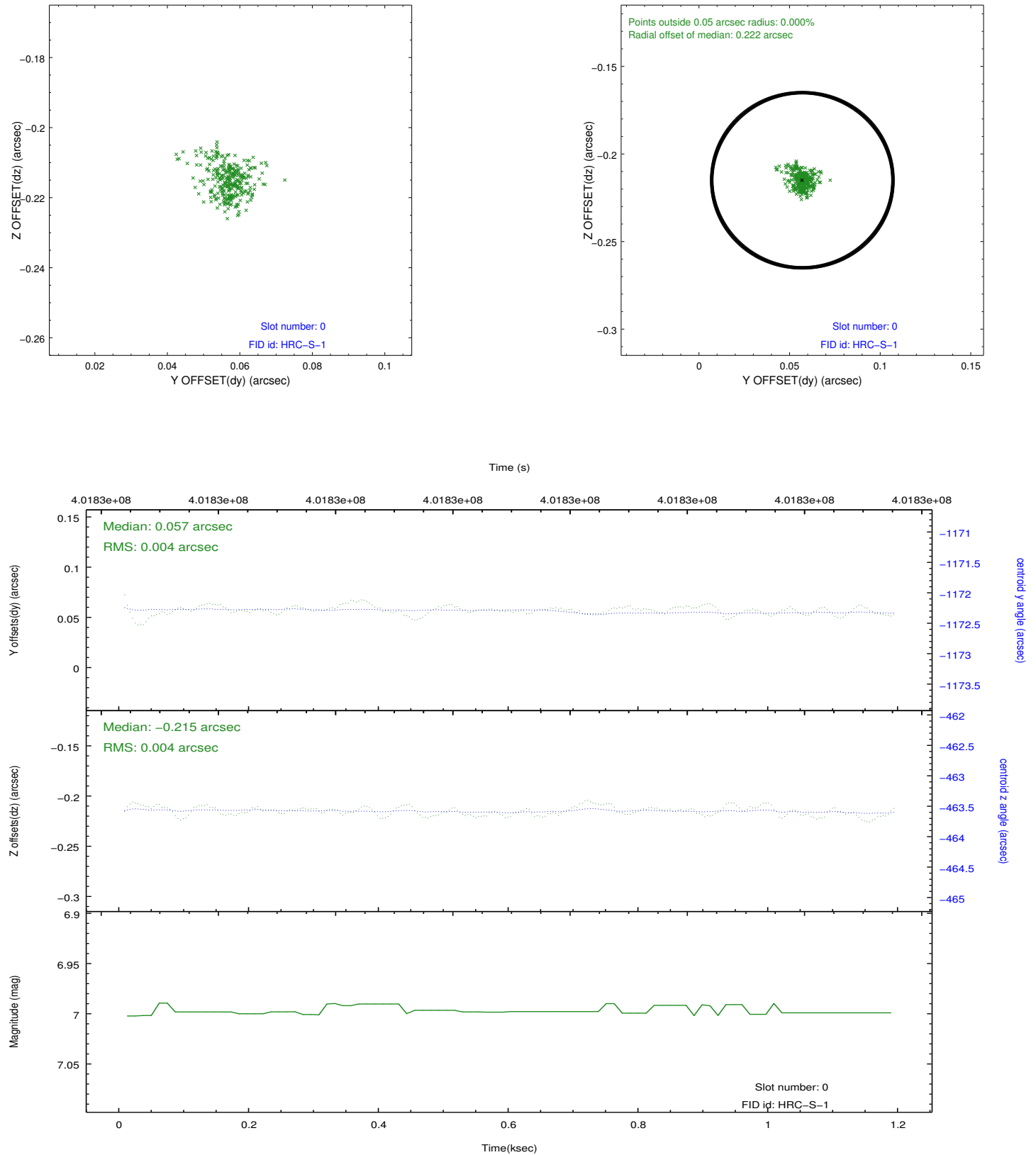


## 2.4.5 Slot 7

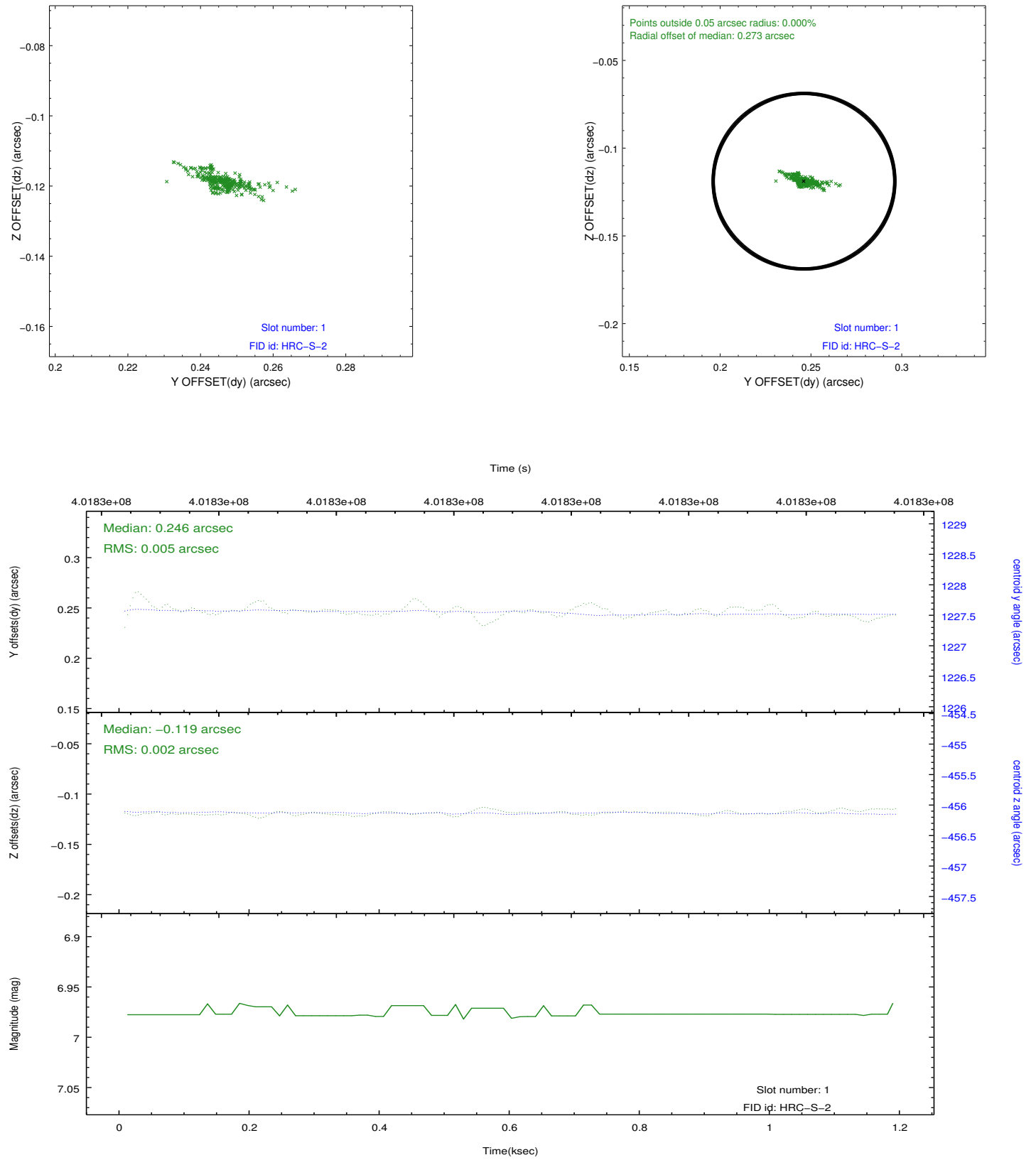


## 2.5 FID Slots

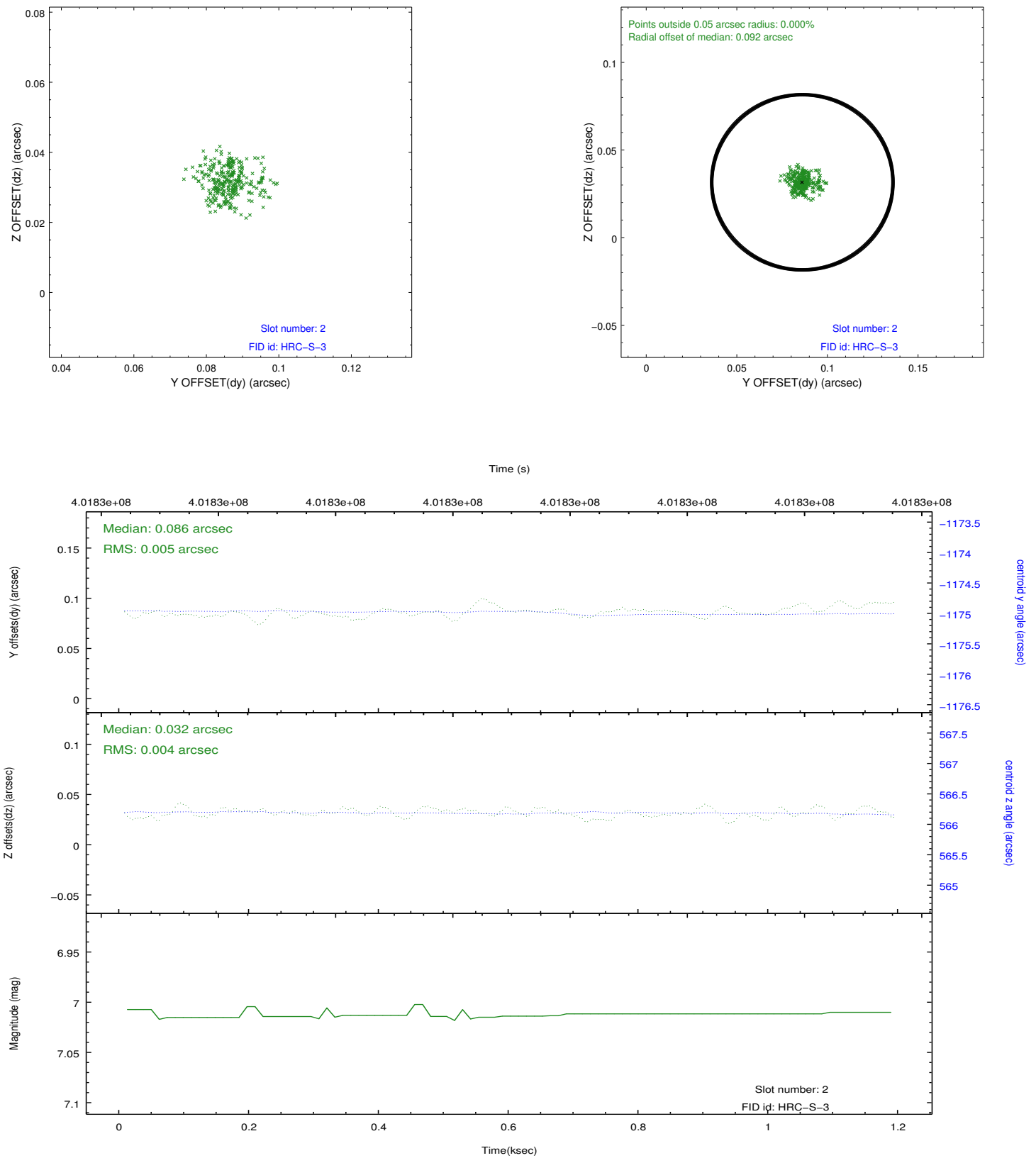
### 2.5.1 Slot 0



## 2.5.2 Slot 1



### 2.5.3 Slot 2



## A Summary

### A.1 Status

V&V Scientist	Jen Lauer
V&V Date (YYYY-MM-DD)	2012.07.12
V&V Edition	1
V&V Disposition and Status	OK
V&V Charge Time	1.1574813094139

### A.2 Comments