

V&V Reference Report

L2 ASCDS Version : 8.4.5

Observation 11912 - L2 Version 2
Chandra X-Ray Center

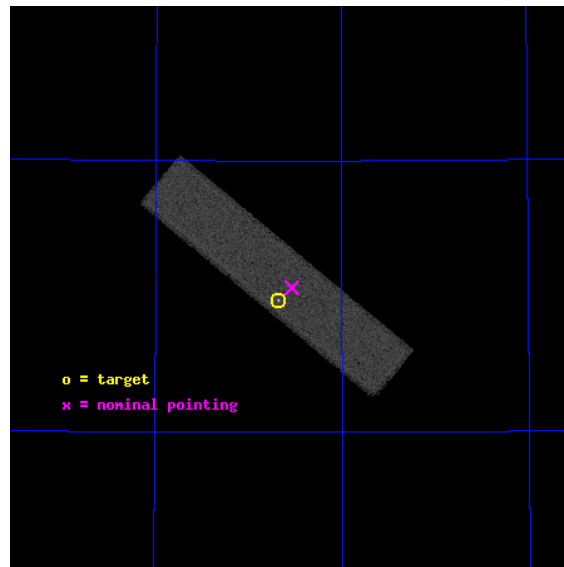
L2 Processing Date : Jul 3 2012

Contents

1	Front	2
2	OBI	3
2.1	OBI	3
2.1.1	Images	3
2.1.2	Parameters	4
2.1.3	Events	4
2.2	Compared Parameters	5
2.3	Aspect	6
2.4	Star Slots	9
2.4.1	Slot 3	9
2.4.2	Slot 4	10
2.4.3	Slot 5	11
2.4.4	Slot 6	12
2.4.5	Slot 7	13
2.5	FID Slots	14
2.5.1	Slot 0	14
2.5.2	Slot 1	15
2.5.3	Slot 2	16
A	Summary	17
A.1	Status	17
A.2	Comments	17

1 Front

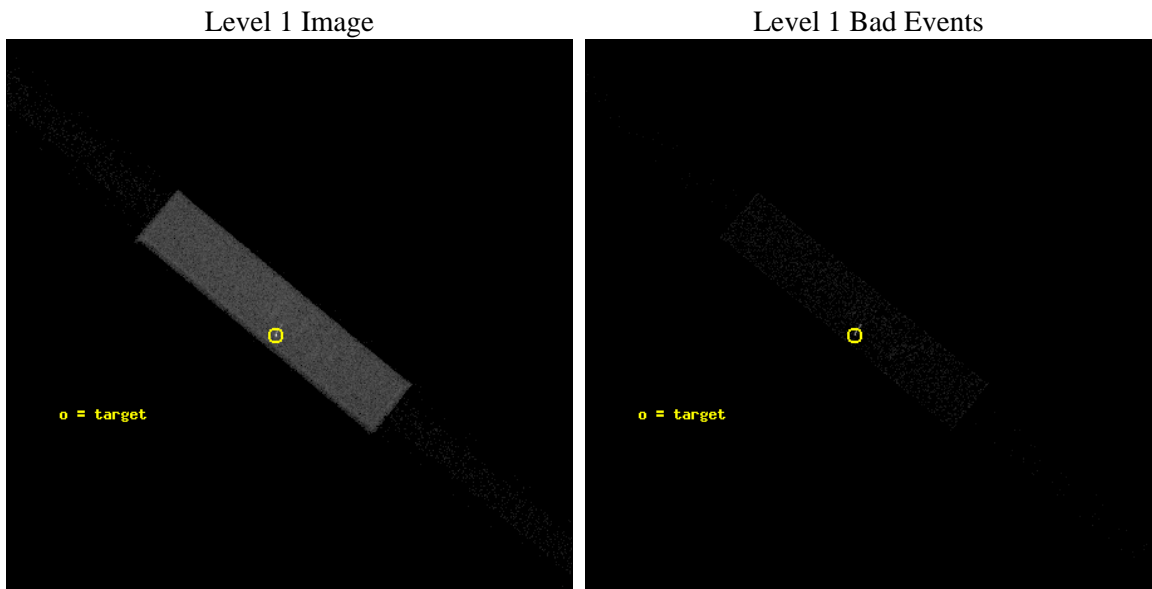
seq_num	290901	Sequence number
obs_id	11912	Observation id
title	AO-11 Calibration Observations to Monitor the Spatial Variations in the HRC-S Gain	Proposal title
observer	Dr. CXC Calibration	Principal investigator
object	ArLac	Source name
ra_targ	332.17	Observer's specified target RA [deg]
dec_targ	45.742306	Observer's specified target Dec [deg]
ra_nom	332.13382165982	Nominal RA [deg]
dec_nom	45.765814778332	Nominal Dec [deg]
roll_nom	219.39398431424	Nominal Roll [deg]
revision	2	Processing version of data
ontime	1159.5313094258	[s]
livetime	1149.6668321296	Ontime multiplied by DTCOR
l2events	73316	Number of level 2 events



2 OBI

2.1 OBI

2.1.1 Images



2.1.2 Parameters

obi_num	0	Obi number	sched_exp_time	1000.000000	[s] Scheduled observation exposure time
ascdsver	8.4.5	Processing system revision	ontime	1159.5313094258	[s]
caldbver	4.5.0	 	l1events	111626	Number of level 1 events
date	2012-07-03T23:52:52	Date and time of file creation			
revision	2	Processing version of data			

2.1.3 Events

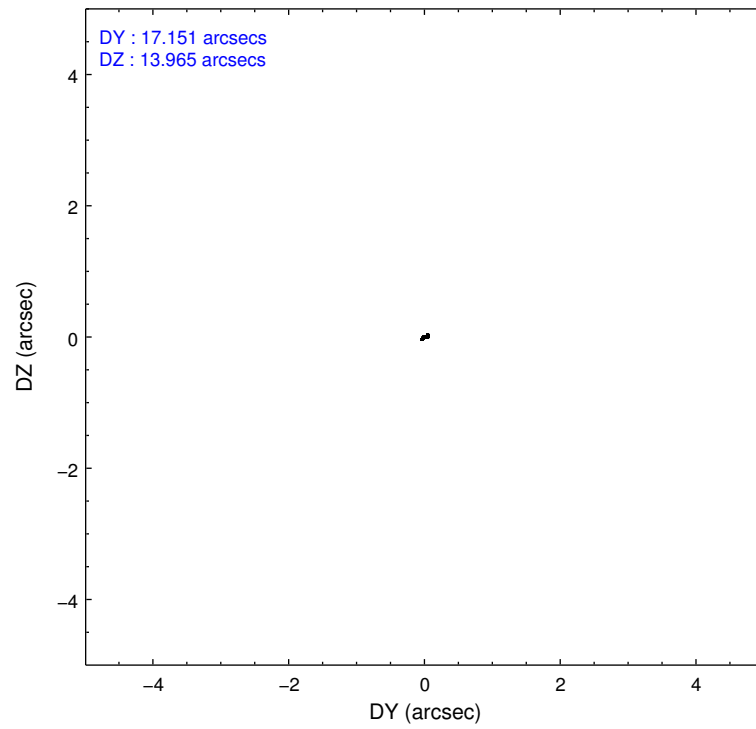
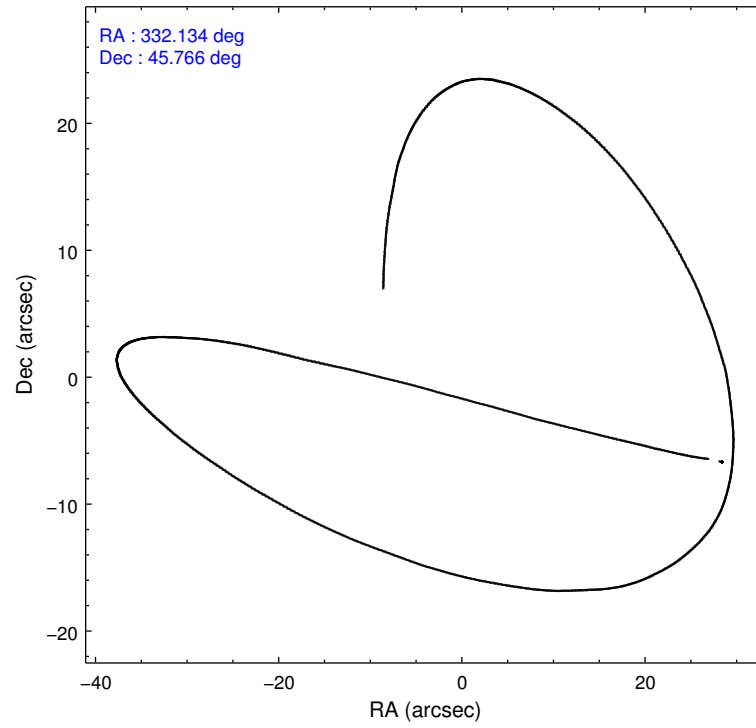
Level 1 Events

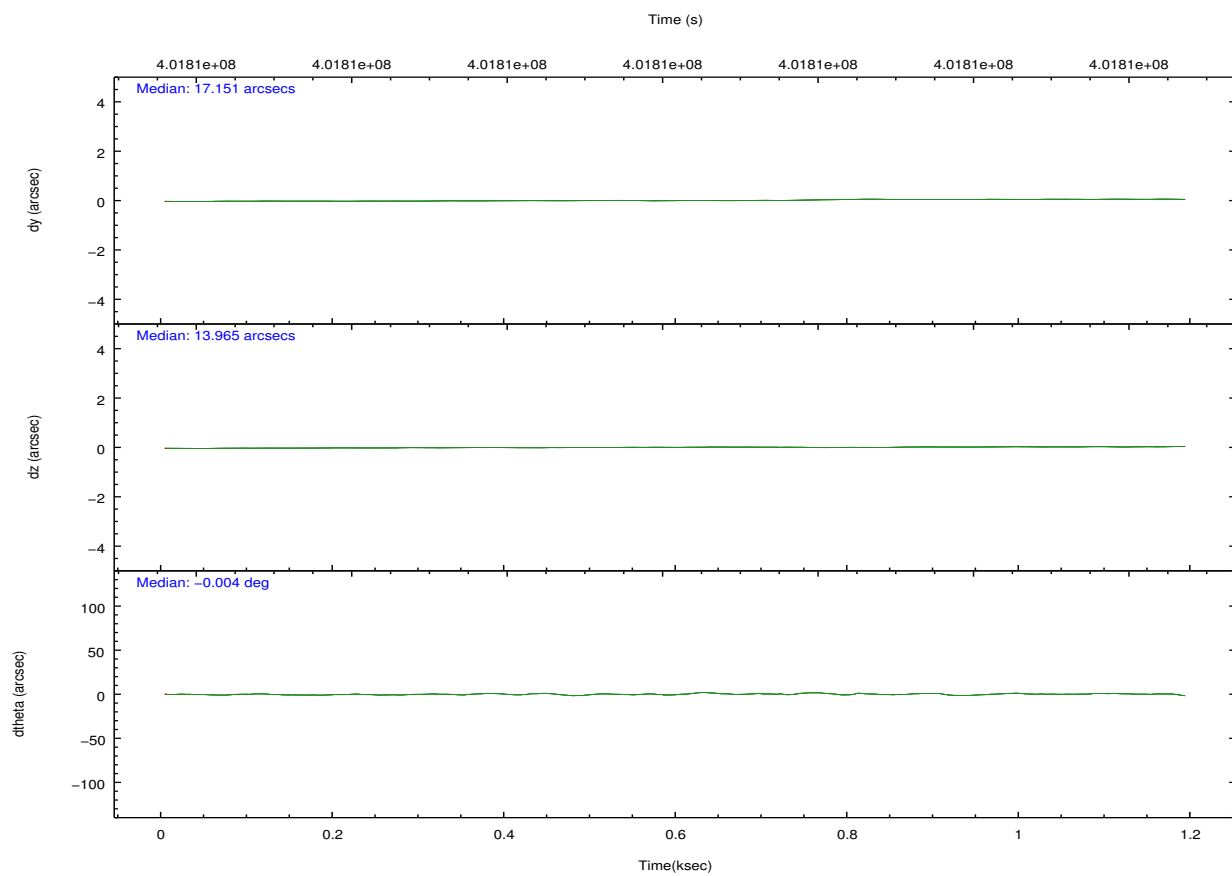
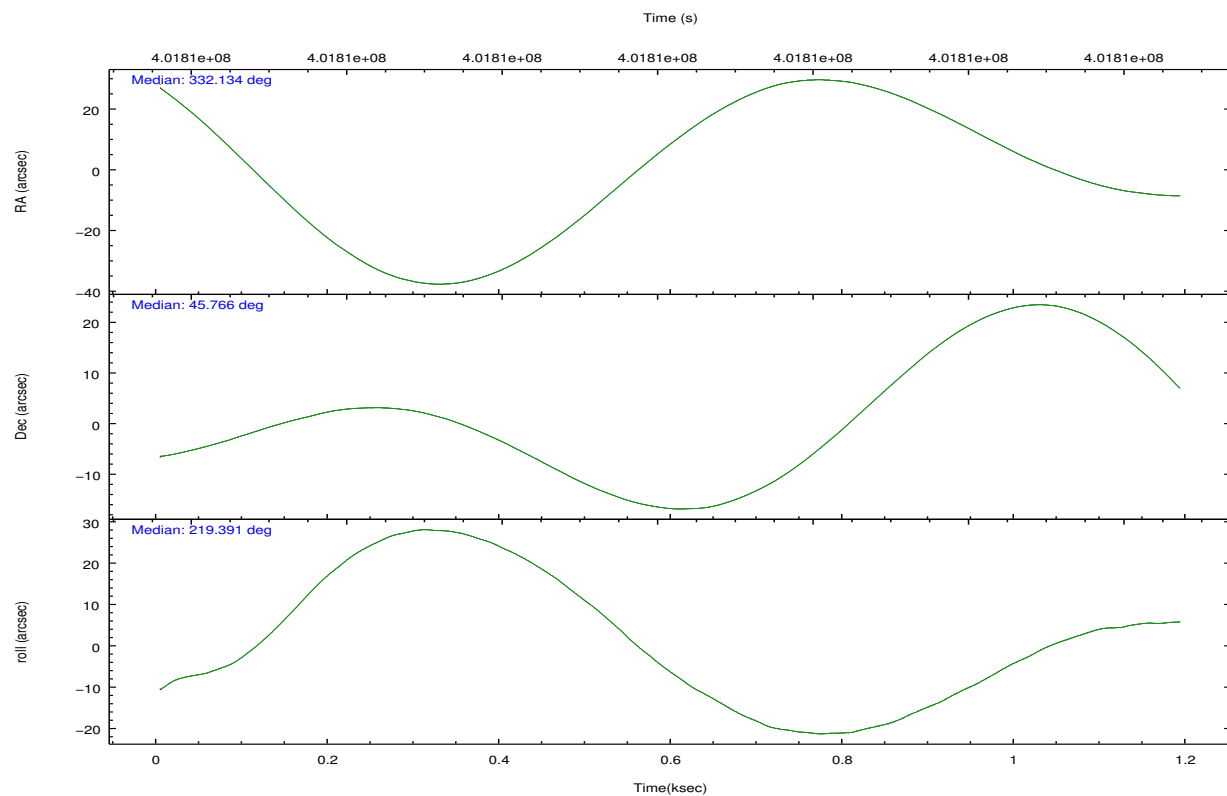
	segment 1	segment 2	segment 3
level 1 events	934	109810	882
rejected events	934	23760	882
rejected %	100%	21%	100%

2.2 Compared Parameters

Parameter	Planned	Actual	Parameter	Planned	Actual
Instrument	HRC	HRC	Obspar format version number	7	7
Detector	HRC-S	HRC-S	Obspar file type	PREDICTED	ACTUAL
Grating	NONE	NONE	Obspar update status	NONE	UPDATED
Data mode	OBSERVING	OBSERVING			
Observation mode	POINTING	POINTING			
[deg] Pointing RA	332.146937	332.1338216598169			
[deg] Pointing Dec	45.792472	45.76581477833192			
[deg] Pointing Roll	219.317214	219.3939843142431			
[mm] SIM focus pos	-1.533336	-1.526339935833849			
[mm] SIM defocus	7.710433287538843e-07	0.006996703570447904			
[mm] SIM translation stage pos	250.455976	250.466033080201			
[mm] SIM translation stage offset	0	-0.01005468664627074			
[s] Observation start time (MET)	401813219.184000	401812843.3892			
Observation start date	2010-09-25T14:45:53	2010-09-25T14:40:43			
[s] Observation end time (MET)	401814219.184000	401814353.21428			
Observation end date	2010-09-25T15:02:33	2010-09-25T15:05:53			

2.3 Aspect



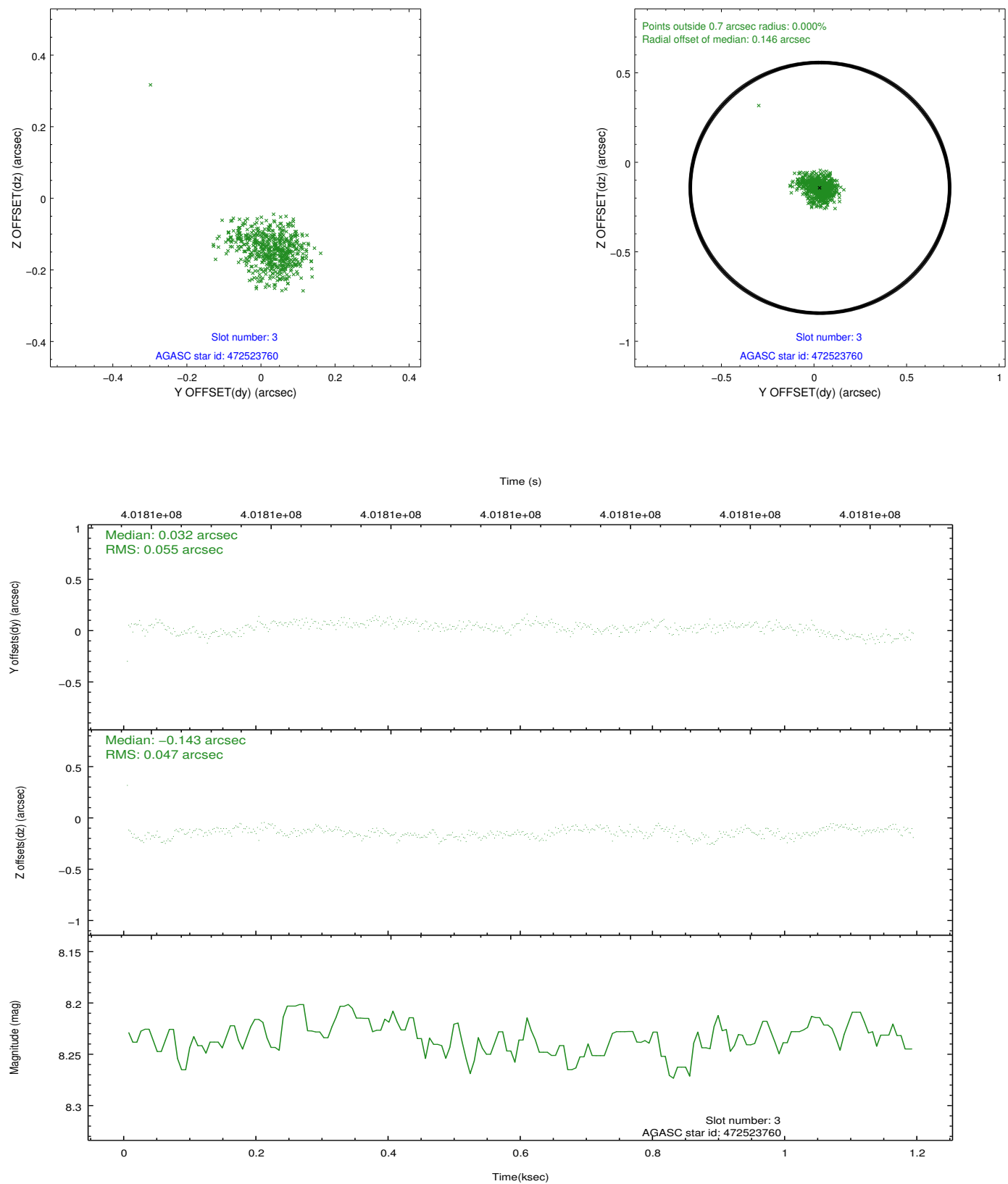


Slot Statistics

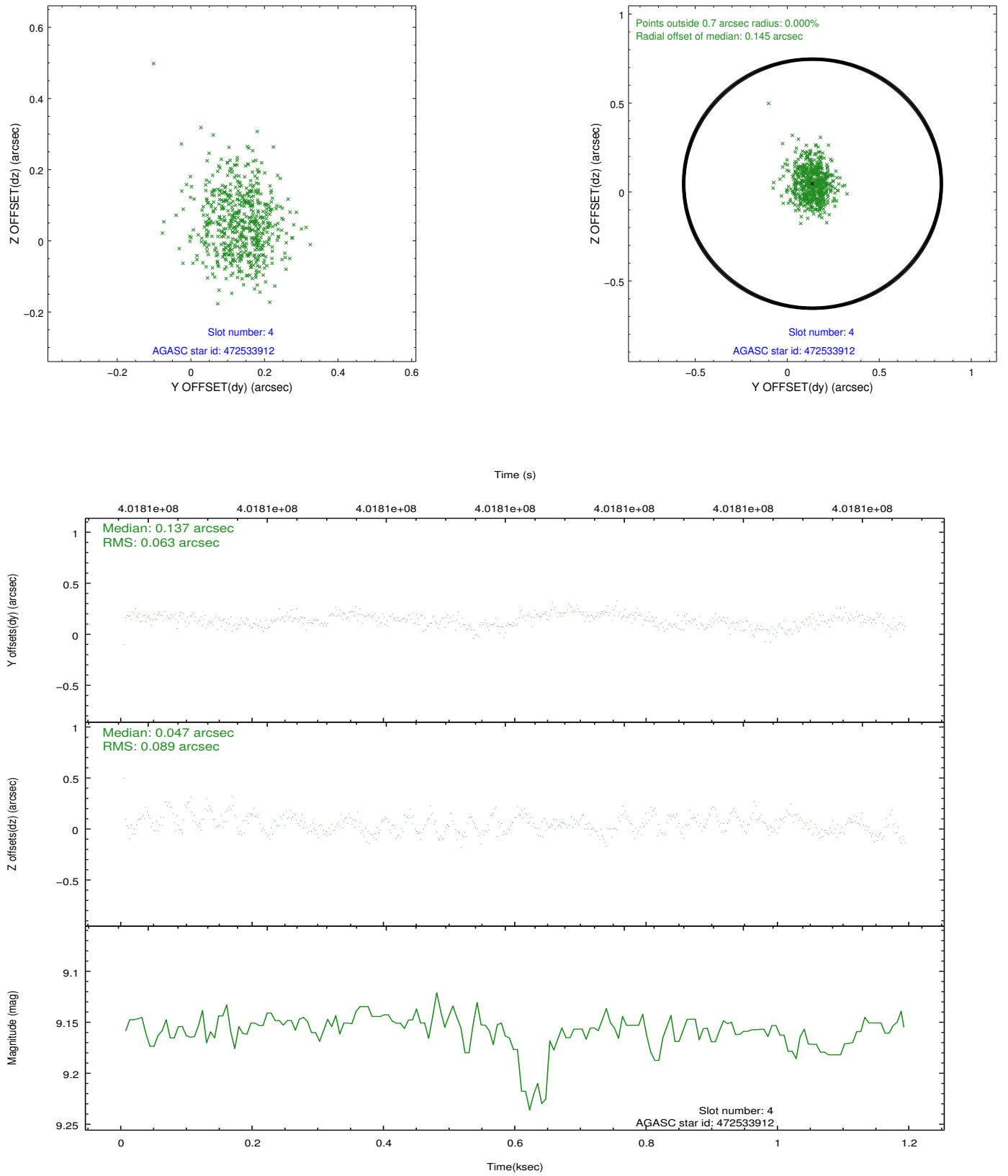
slot	status	id	mag	n_pts	med_dy	med_dz	dr1	dr2	ra	dec	mean_y	mean_z
0	FID	HRC-S-1	6.99	291	0.042	-0.183	0.006	0.011	0.000000	0.000000	-1171.65	-462.82
1	FID	HRC-S-2	6.96	291	0.280	-0.126	0.005	0.009	0.000000	0.000000	1224.22	-456.98
2	FID	HRC-S-3	7.01	291	0.068	0.007	0.006	0.010	0.000000	0.000000	-1170.15	565.32
3	GUIDE	472523760	8.23	581	0.032	-0.143	0.075	0.117	331.645363	45.403260	1867.03	280.66
4	GUIDE	472533912	9.16	581	0.137	0.047	0.111	0.182	331.791136	46.368695	-627.62	-2162.83
5	GUIDE	472655152	9.42	579	0.059	-0.151	0.123	0.193	332.504239	45.862991	-855.30	368.82
6	GUIDE	472665256	9.02	580	0.155	0.204	0.097	0.158	332.808125	46.195041	-2197.83	-78.75
7	GUIDE	472525528	6.64	580	-0.374	0.057	0.072	0.124	331.551102	45.248694	2401.75	556.41

2.4 Star Slots

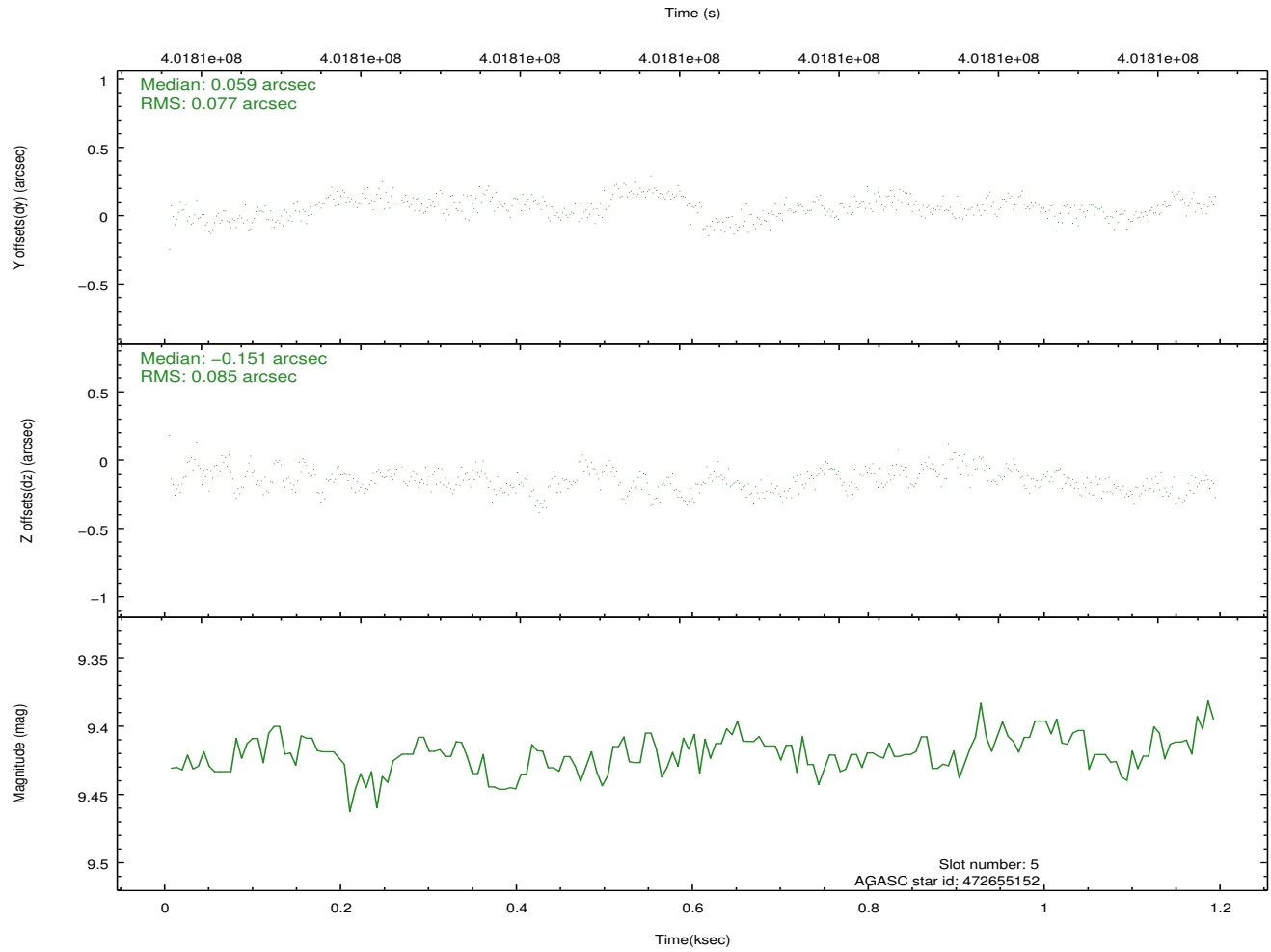
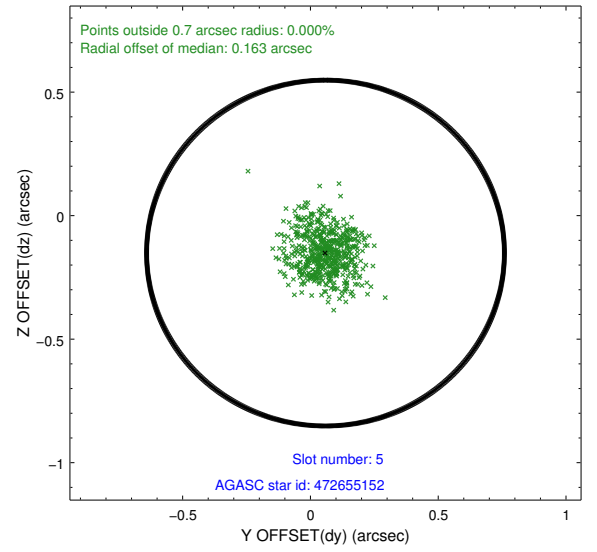
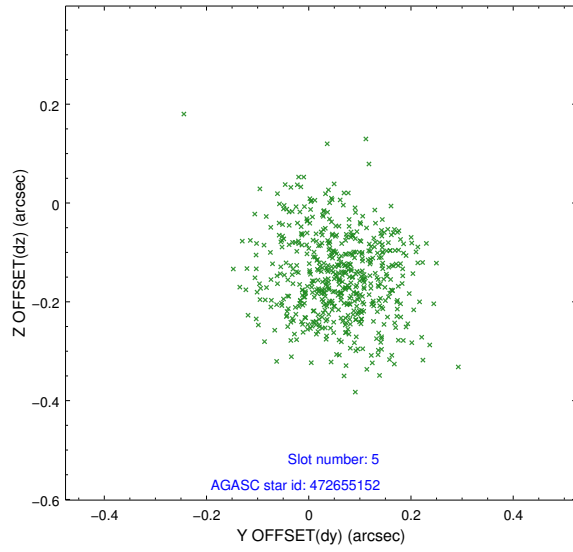
2.4.1 Slot 3



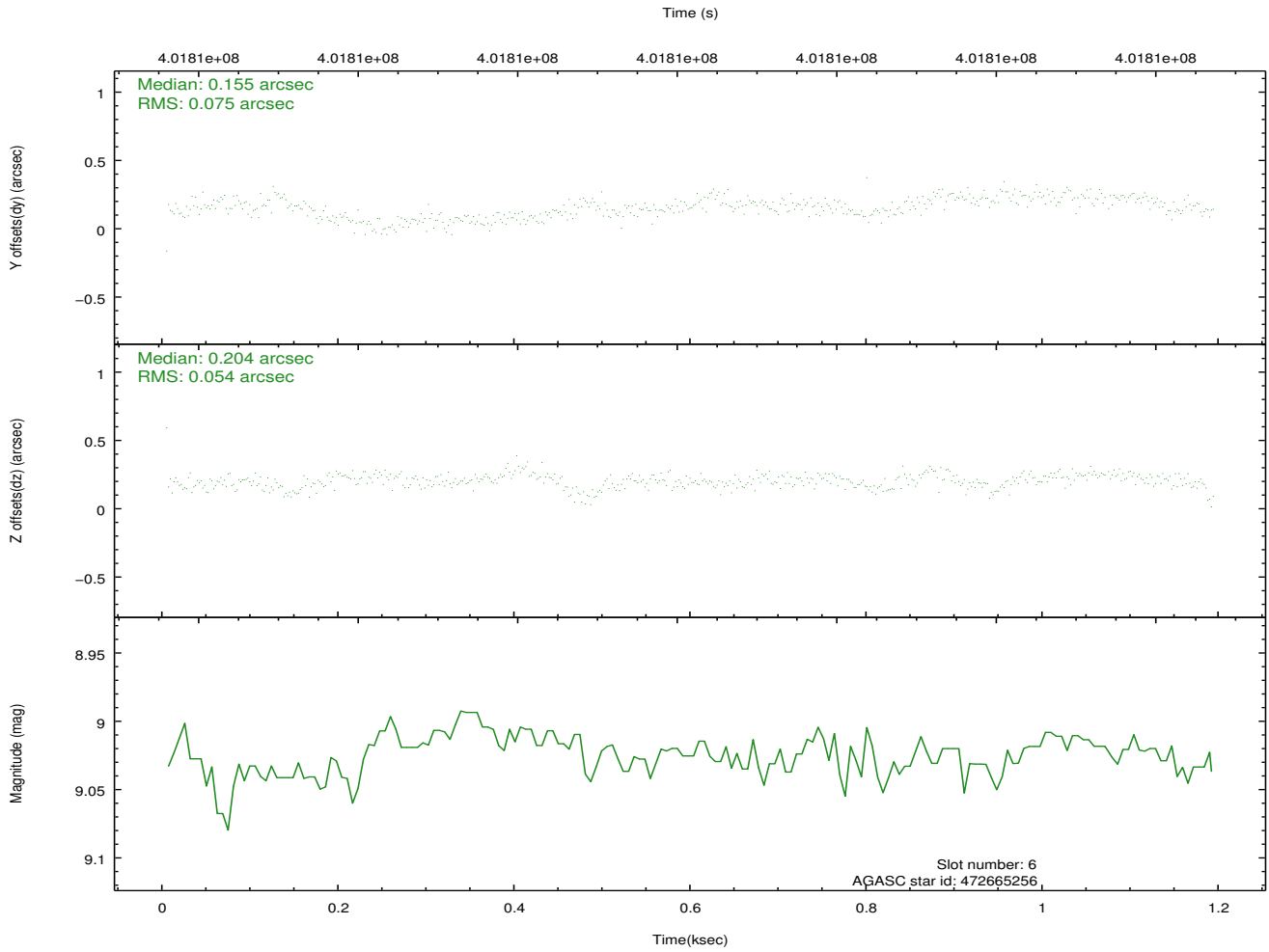
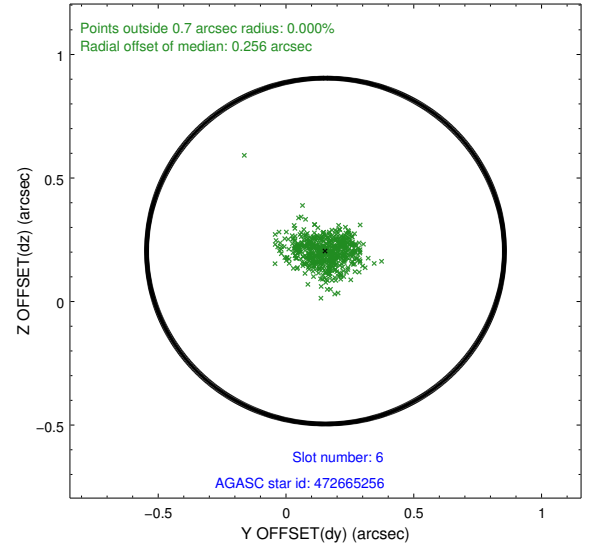
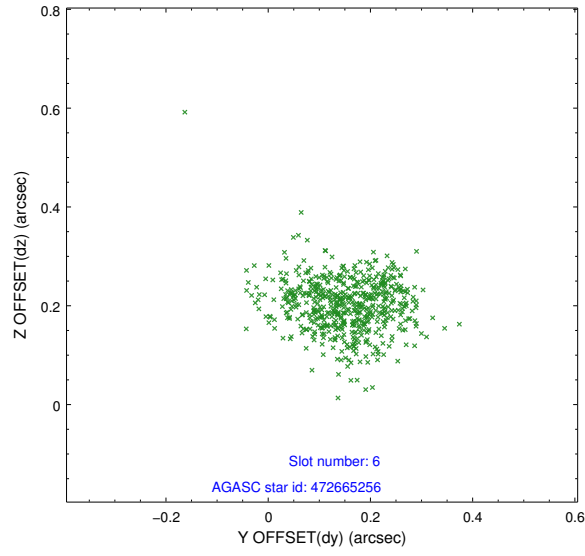
2.4.2 Slot 4



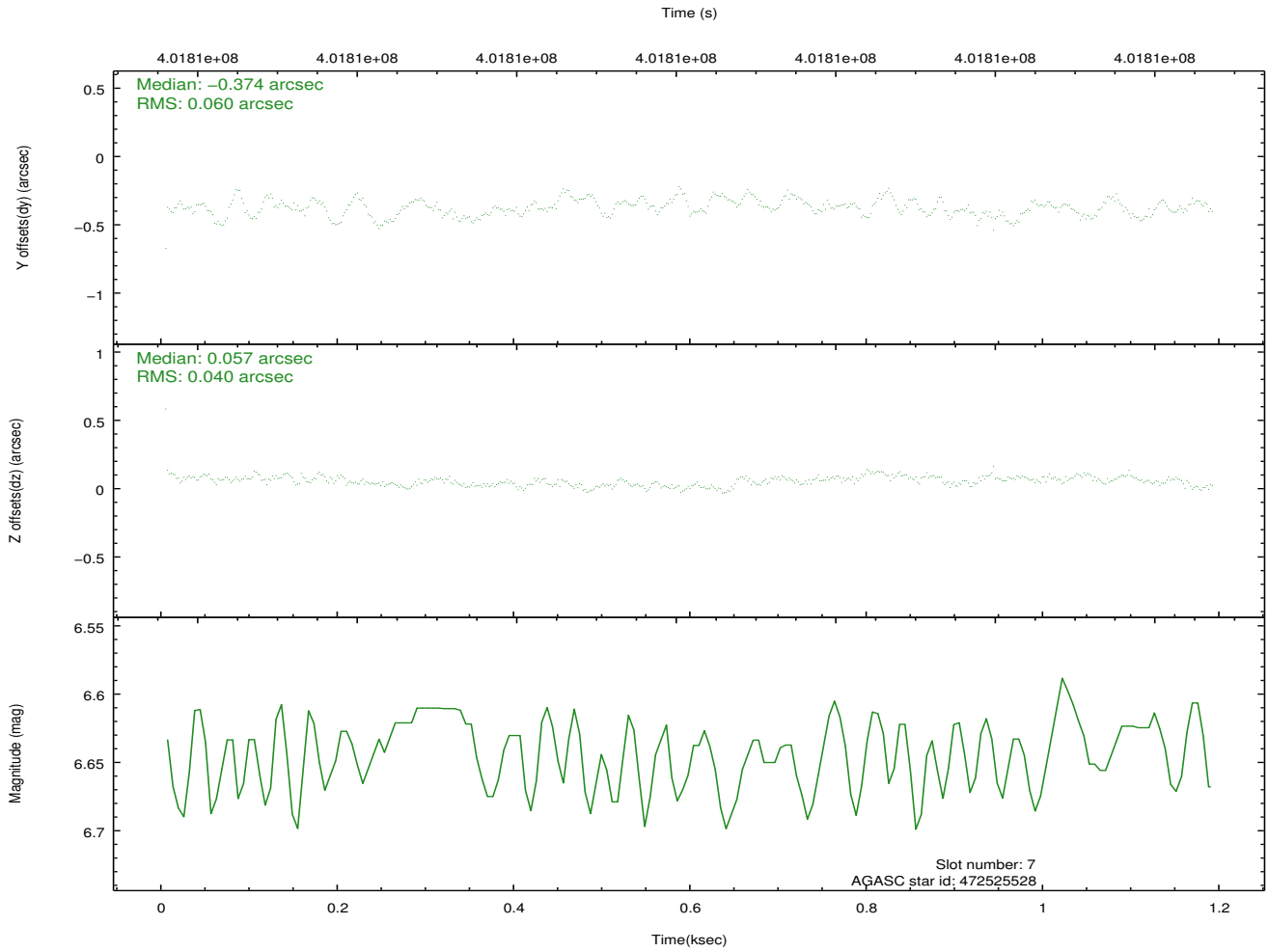
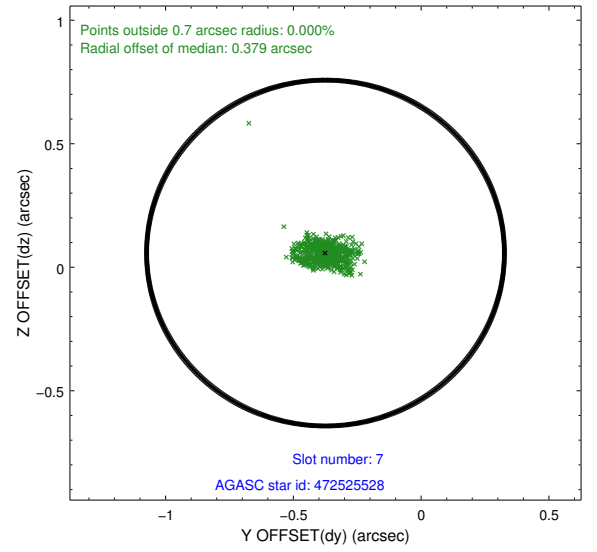
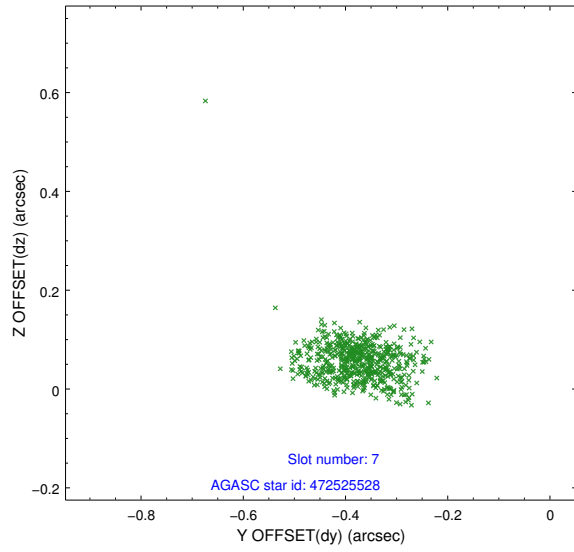
2.4.3 Slot 5



2.4.4 Slot 6

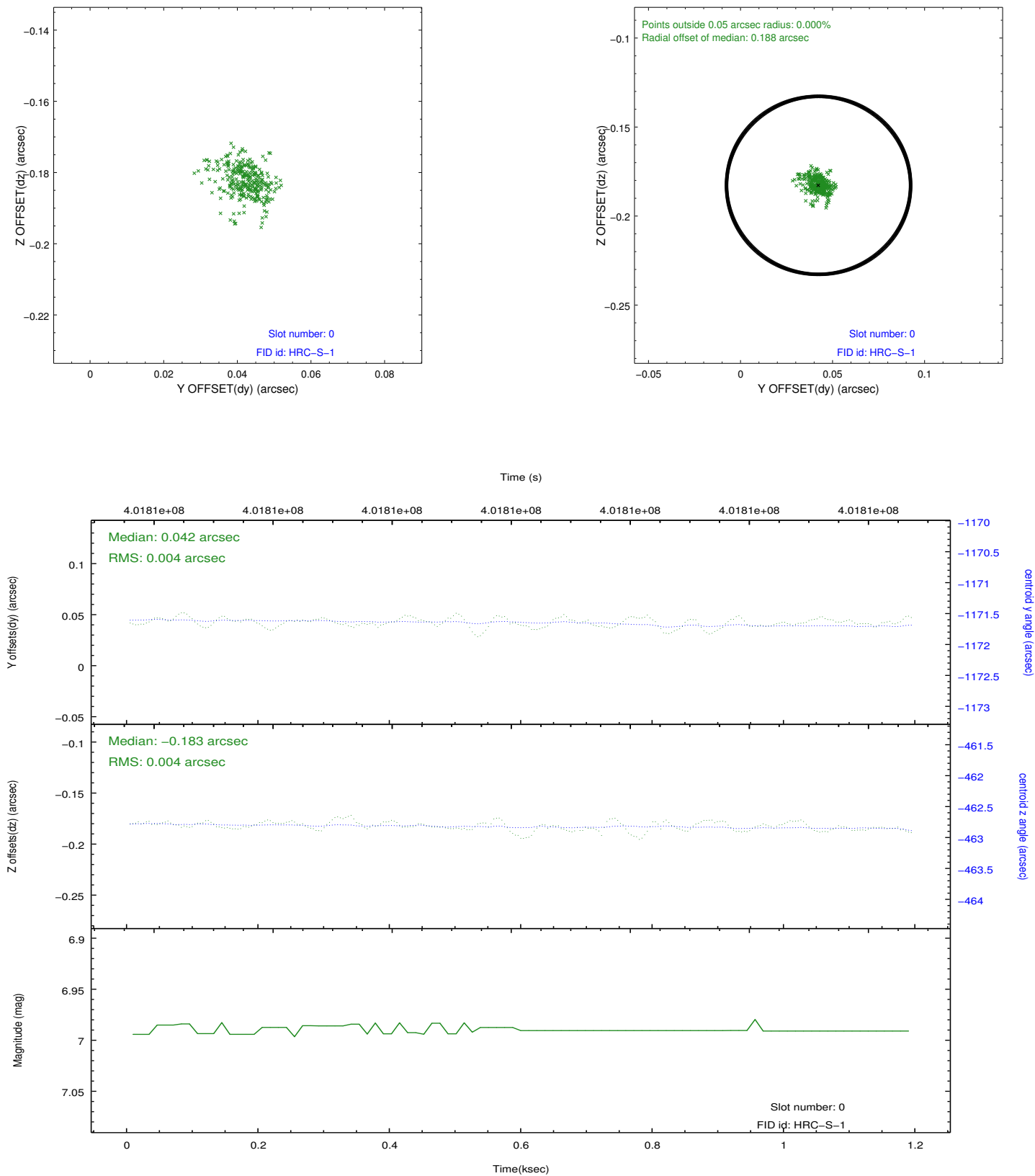


2.4.5 Slot 7

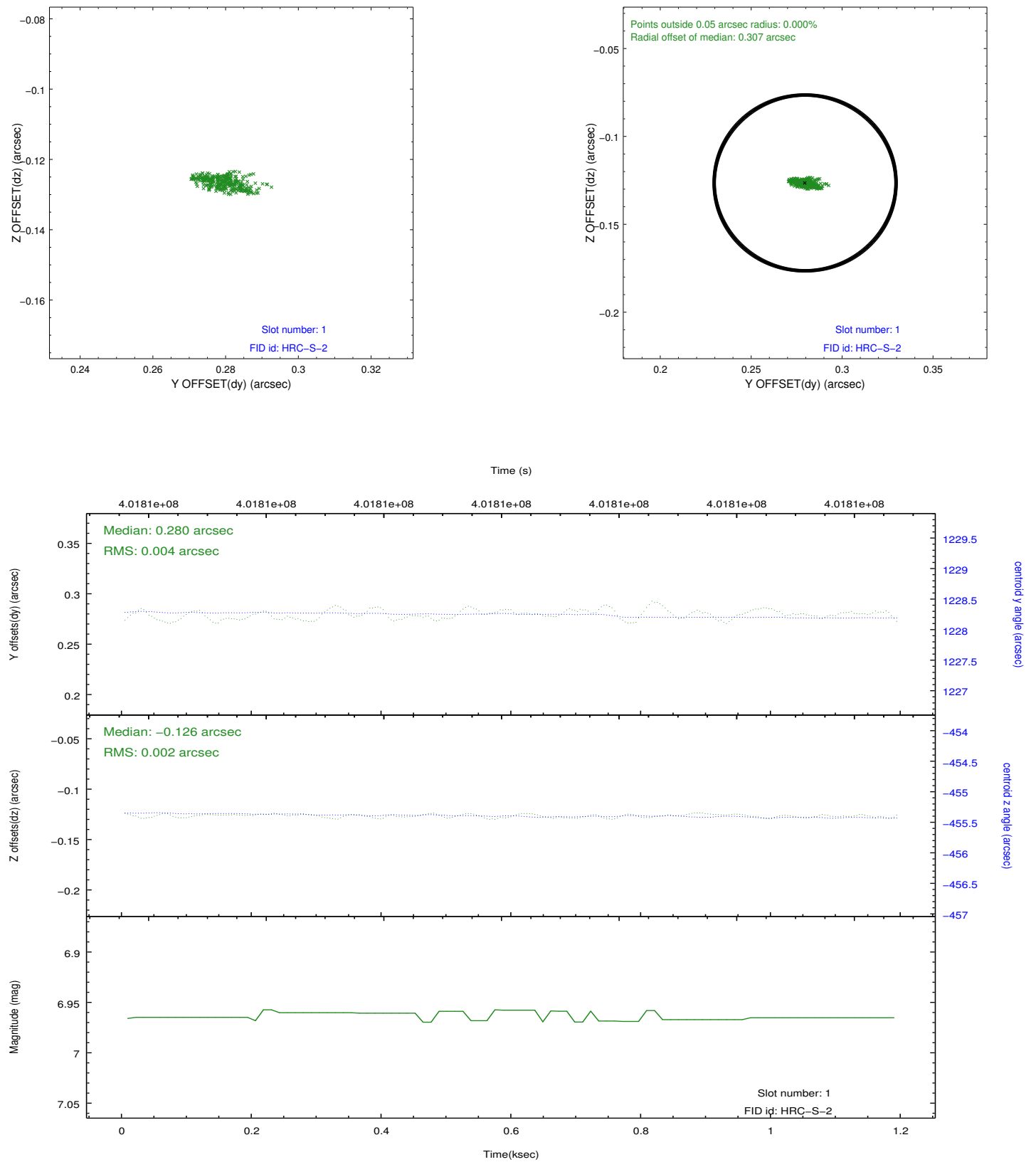


2.5 FID Slots

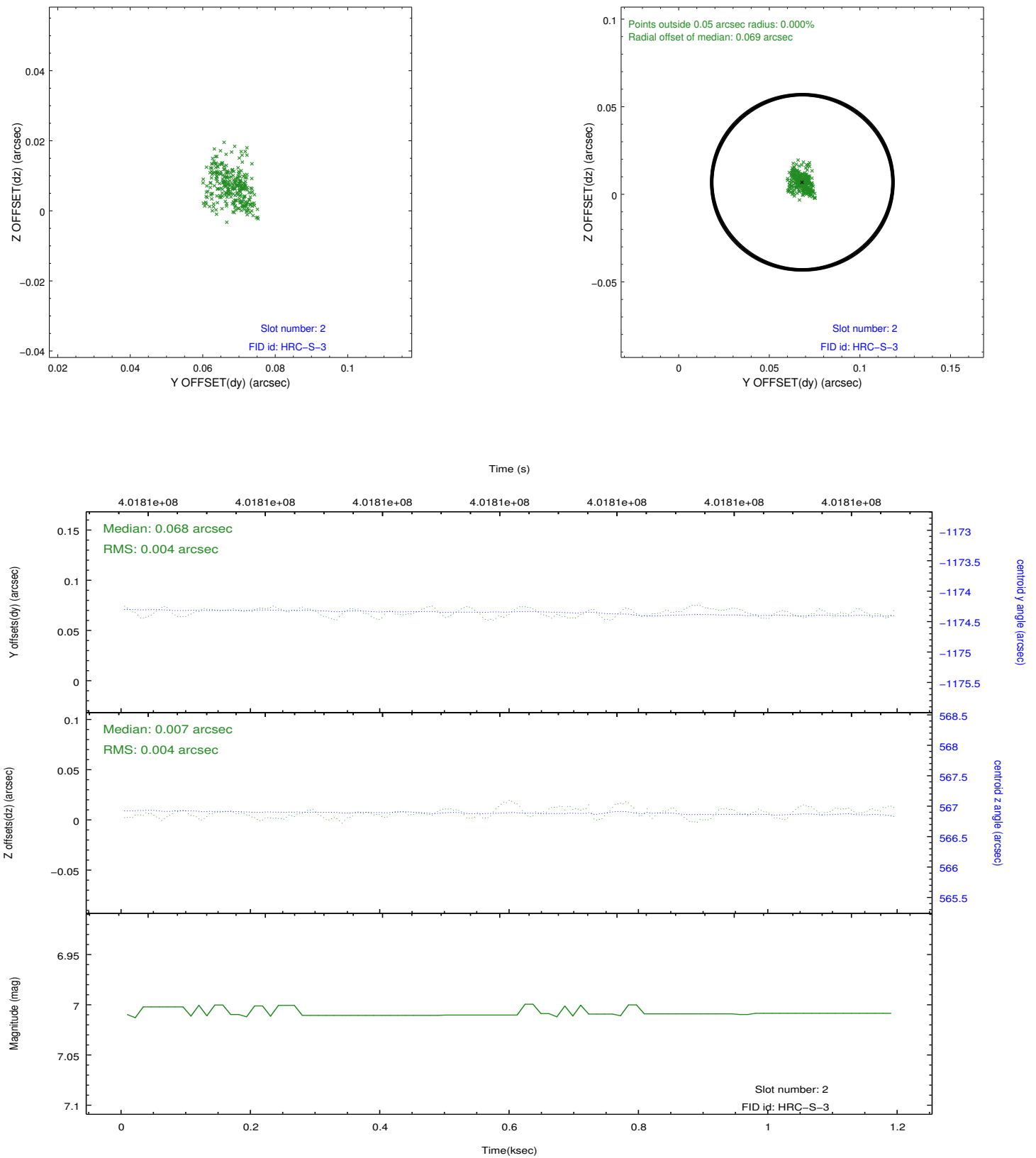
2.5.1 Slot 0



2.5.2 Slot 1



2.5.3 Slot 2



A Summary

A.1 Status

V&V Scientist	Jen Lauer
V&V Date (YYYY-MM-DD)	2012.07.12
V&V Edition	1
V&V Disposition and Status	OK
V&V Charge Time	1.1595313094854

A.2 Comments