

V&V Reference Report

L2 ASCDS Version : 8.4.5

Observation 10667 - L2 Version 2
Chandra X-Ray Center

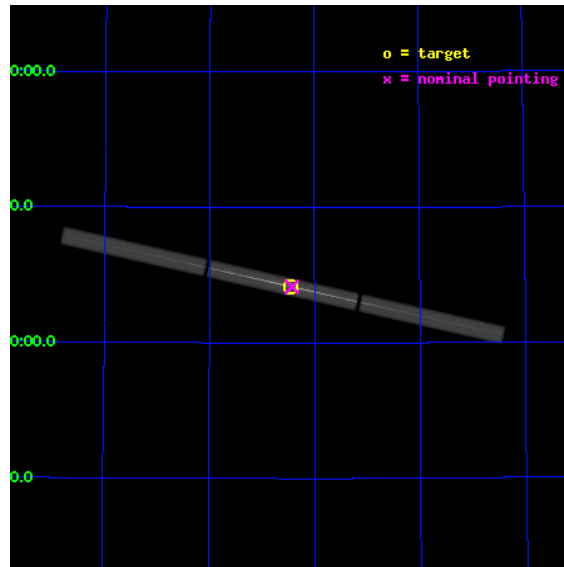
L2 Processing Date : Jun 27 2012

Contents

1	Front	2
2	OBI	3
2.1	OBI	3
2.1.1	Images	3
2.1.2	Parameters	4
2.1.3	Events	4
2.2	Compared Parameters	5
2.3	Aspect	6
2.4	Star Slots	9
2.4.1	Slot 3	9
2.4.2	Slot 4	10
2.4.3	Slot 5	11
2.4.4	Slot 6	12
2.4.5	Slot 7	13
2.5	FID Slots	14
2.5.1	Slot 0	14
2.5.2	Slot 1	15
2.5.3	Slot 2	16
3	Gratings	17
3.1	LETG Arm	17
A	Summary	19
A.1	Status	19
A.2	Comments	19

1 Front

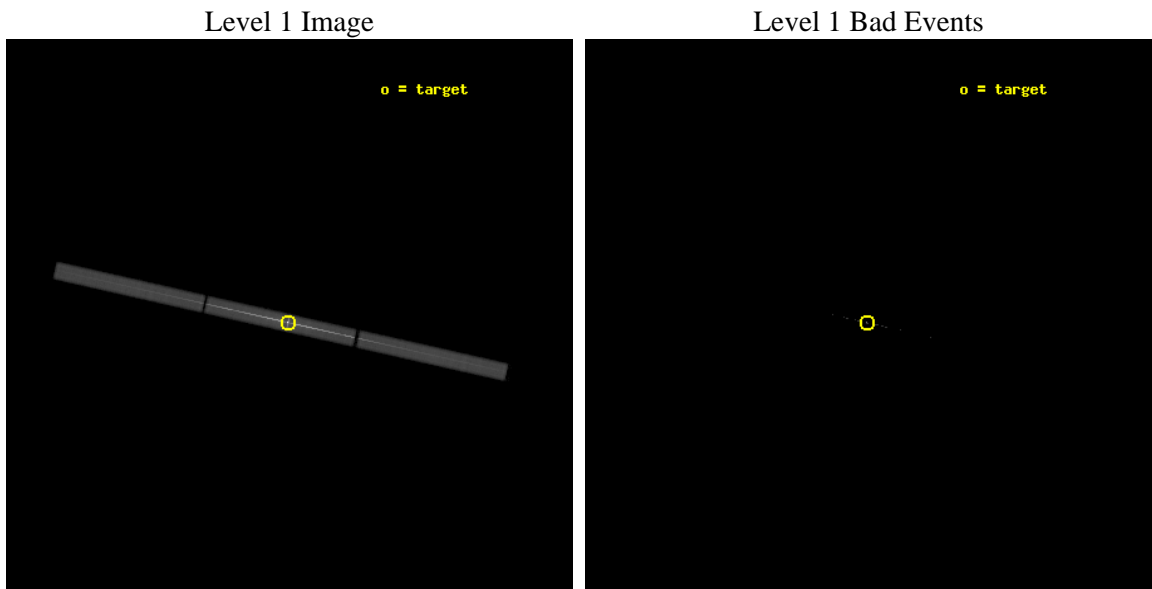
seq_num	790204	Sequence number
obs_id	10667	Observation id
title	AO-10 Calibration Observations of PKS2155-304	Proposal title
observer	Dr. CXC Calibration	Principal investigator
object	Mkn421	Source name
ra_targ	166.113333	Observer's specified target RA [deg]
dec_targ	38.208806	Observer's specified target Dec [deg]
ra_nom	166.10720923724	Nominal RA [deg]
dec_nom	38.207701384002	Nominal Dec [deg]
roll_nom	192.53435748852	Nominal Roll [deg]
revision	2	Processing version of data
ontime	10183.631766617	[s]
liveltime	10033.432761976	Ontime multiplied by DTCOR
l2events	1470084	Number of level 2 events



2 OBI

2.1 OBI

2.1.1 Images



2.1.2 Parameters

obi_num	0	Obi number	sched_exp_time	10000.000000	[s] Scheduled observation exposure time
ascdsver	8.4.5	Processing system revision	ontime	10183.631766617	[s]
caldsver	4.5.0	 	l1events	1766143	Number of level 1 events
date	2012-06-27T18:17:56	Date and time of file creation			
revision	2	Processing version of data			

2.1.3 Events

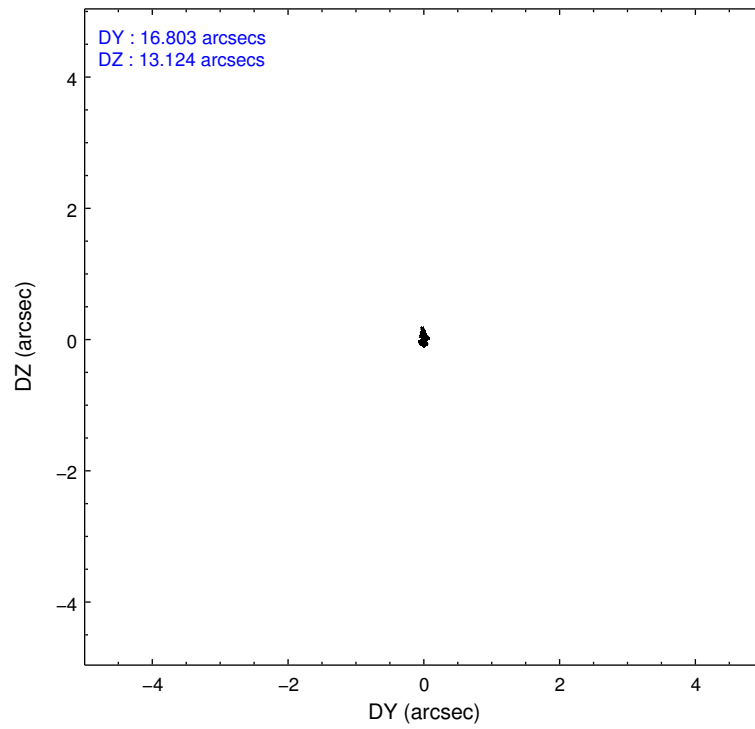
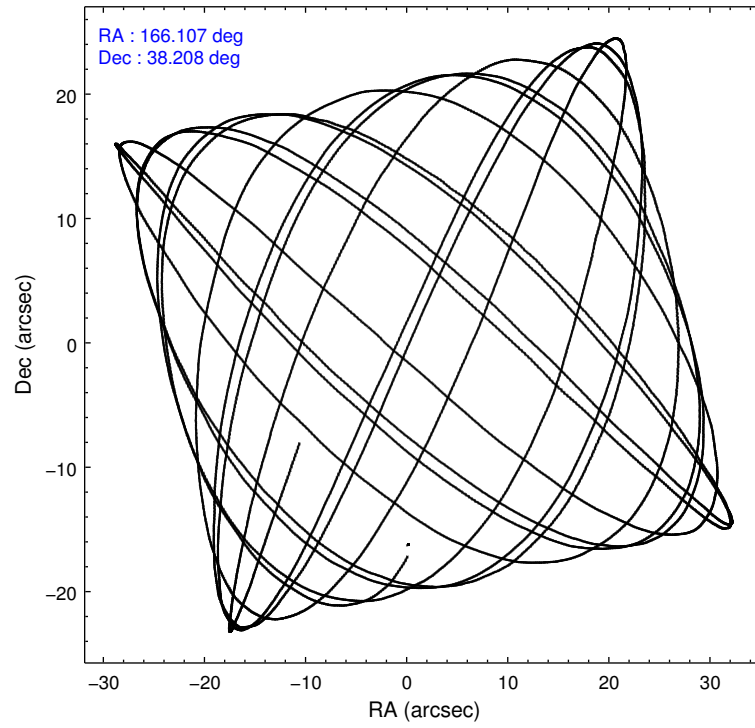
Level 1 Events

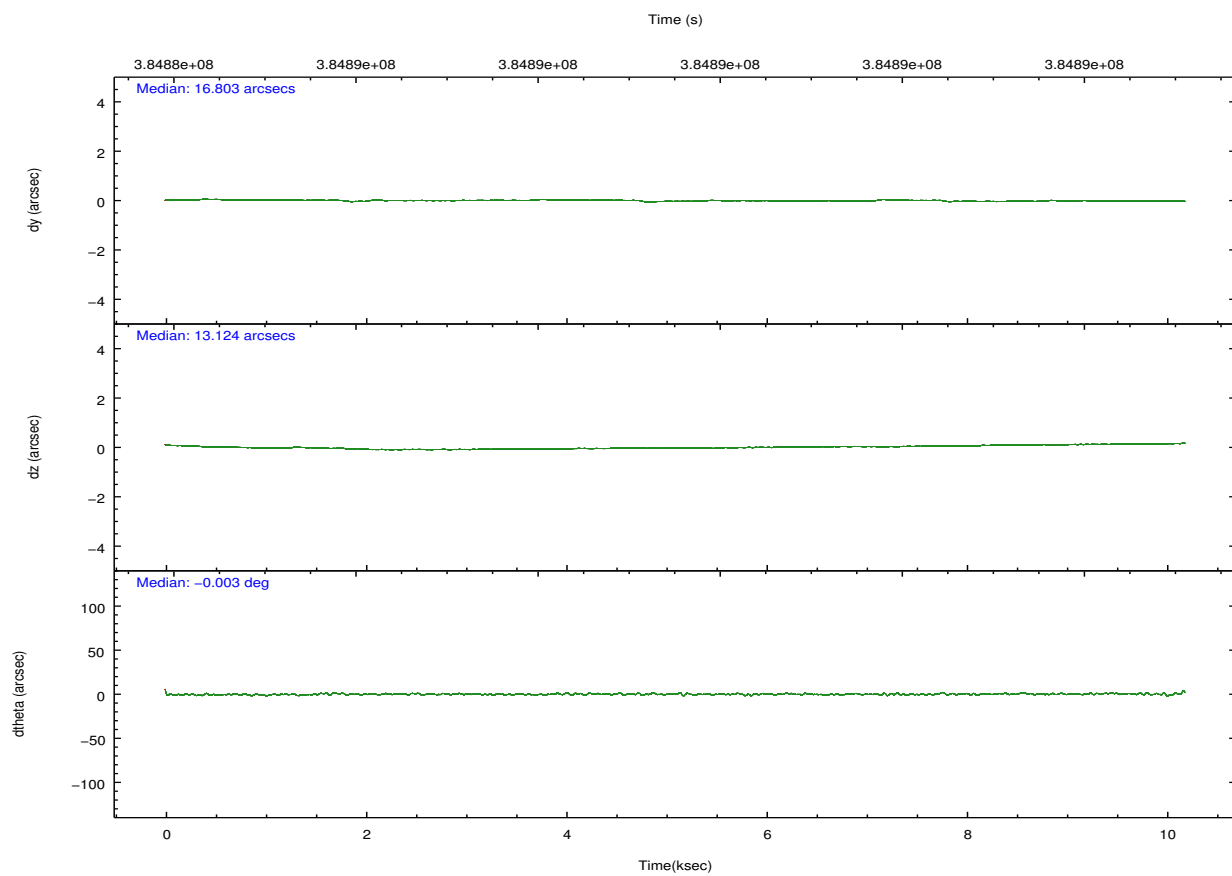
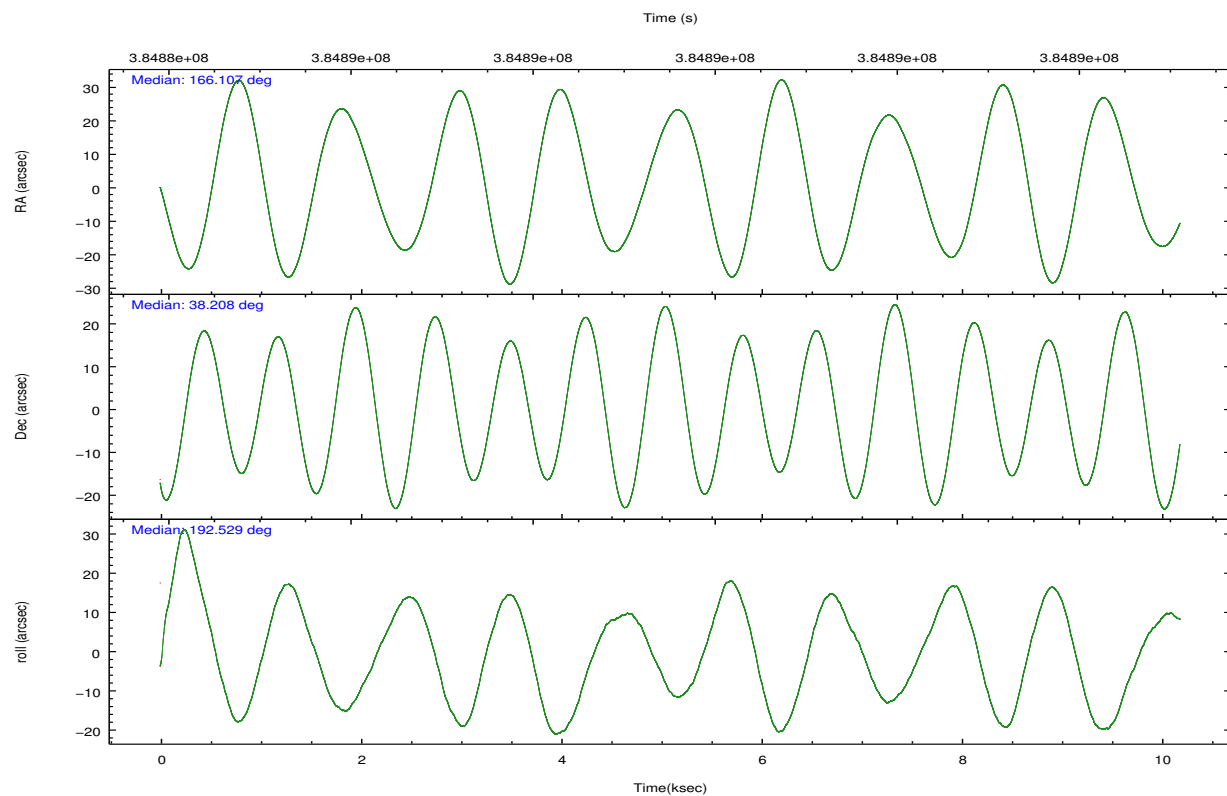
	segment 1	segment 2	segment 3
level 1 events	403172	948092	414879
rejected events	11242	18778	11371
rejected %	2%	1%	2%

2.2 Compared Parameters

Parameter	Planned	Actual	Parameter	Planned	Actual
Instrument	HRC	HRC	Obspar format version number	7	7
Detector	HRC-S	HRC-S	Obspar file type	PREDICTED	ACTUAL
Grating	LETG	LETG	Obspar update status	NONE	UPDATED
Data mode	OBSERVING	OBSERVING			
Observation mode	POINTING	POINTING			
[deg] Pointing RA	166.133066	166.1072092372404			
[deg] Pointing Dec	38.228269	38.20770138400165			
[deg] Pointing Roll	192.451038	192.5343574885194			
[mm] SIM focus pos	-1.429586	-1.428180813131781			
[mm] SIM defocus	0.1037507710433287	0.1051558262725154			
[mm] SIM translation stage pos	250.455976	250.466033080201			
[mm] SIM translation stage offset	0	-0.01005468664627074			
[s] Observation start time (MET)	384884589.184000	384884123.95042			
Observation start date	2010-03-13T16:22:03	2010-03-13T16:15:23			
[s] Observation end time (MET)	384894589.184000	384894851.60097			
Observation end date	2010-03-13T19:08:43	2010-03-13T19:14:11			

2.3 Aspect



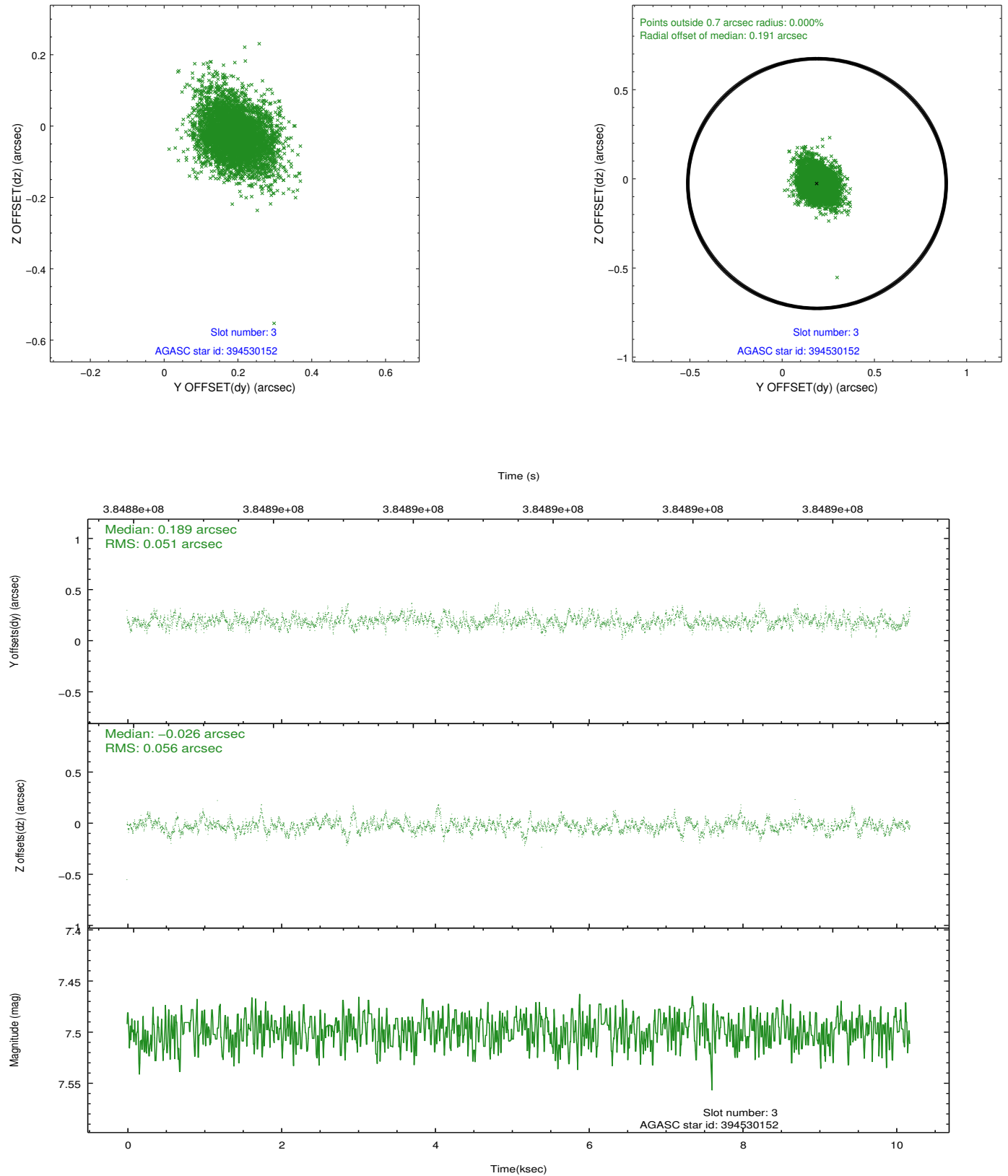


Slot Statistics

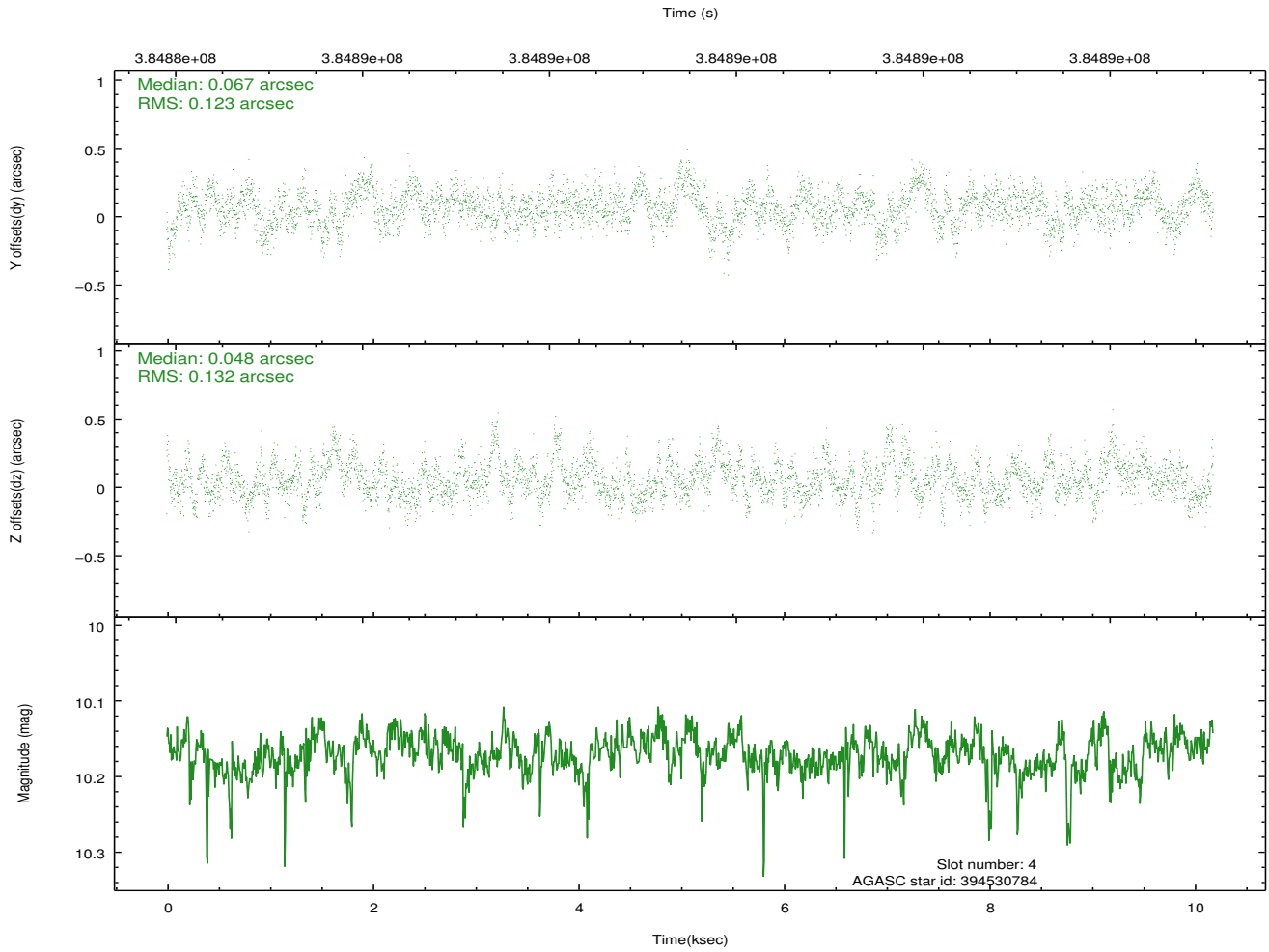
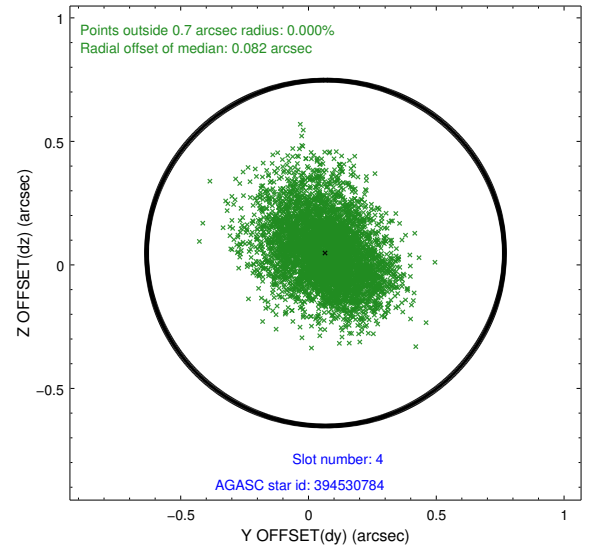
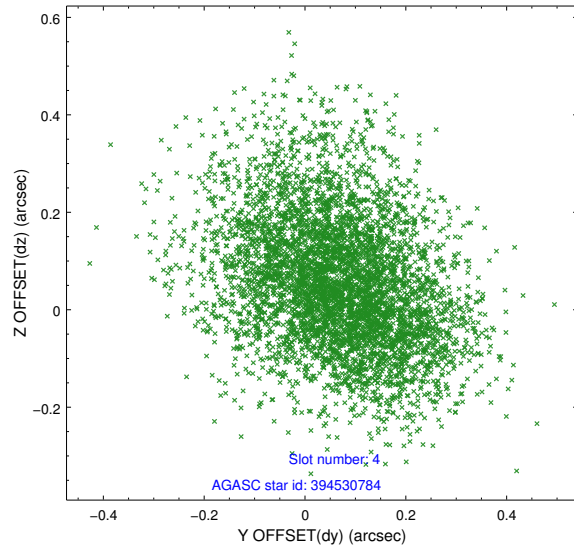
slot	status	id	mag	n_pts	med_dy	med_dz	dr1	dr2	ra	dec	mean_y	mean_z
0	FID	HRC-S-2	6.98	2484	0.205	-0.079	0.009	0.016	0.000000	0.000000	1228.53	-454.52
1	FID	HRC-S-3	7.02	2484	-0.041	-0.069	0.006	0.011	0.000000	0.000000	-1173.60	567.51
2	FID	HRC-S-4	6.95	2485	0.241	-0.148	0.010	0.016	0.000000	0.000000	1226.69	570.37
3	GUIDE	394530152	7.50	4969	0.189	-0.026	0.078	0.136	166.075805	38.868252	-339.85	-2284.57
4	GUIDE	394530784	10.17	4948	0.067	0.048	0.189	0.316	165.569172	38.418674	1404.14	-1017.39
5	GUIDE	394543960	9.80	4954	0.046	-0.005	0.148	0.247	165.802757	37.787371	1259.51	1345.45
6	GUIDE	394546712	6.61	4969	-0.272	0.207	0.091	0.144	166.451462	38.394357	-1005.87	-391.39
7	GUIDE	394528824	10.04	4955	-0.025	-0.233	0.203	0.309	165.824970	38.140431	919.25	118.96

2.4 Star Slots

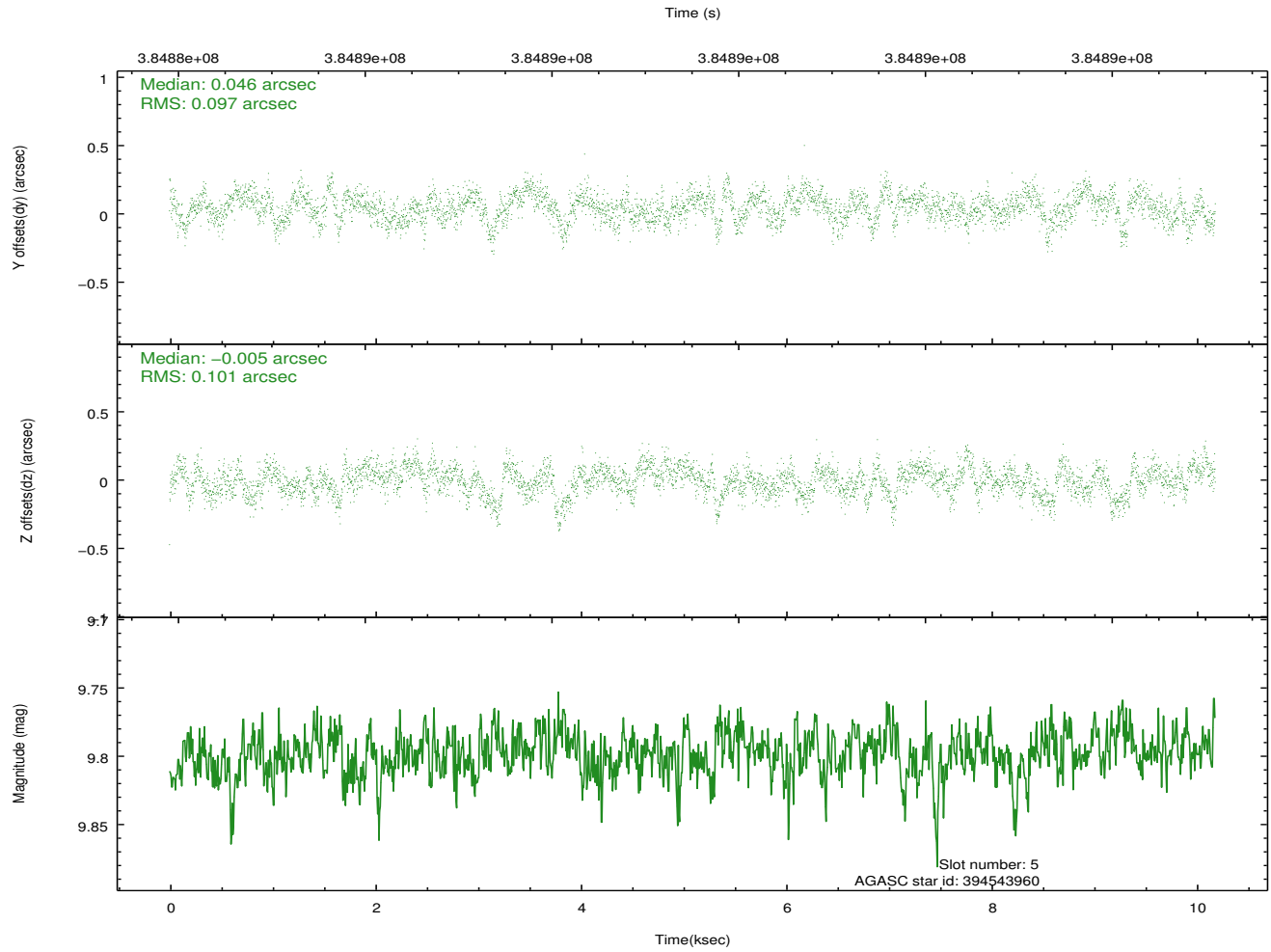
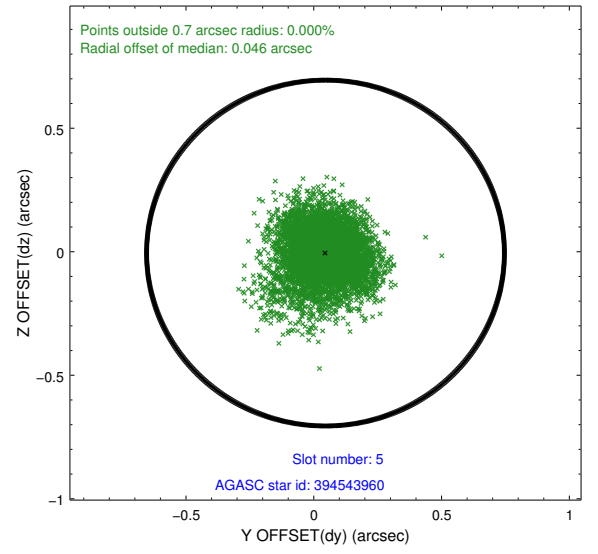
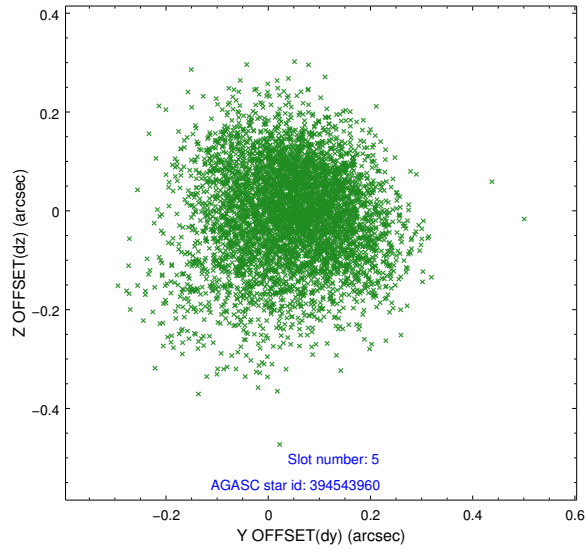
2.4.1 Slot 3



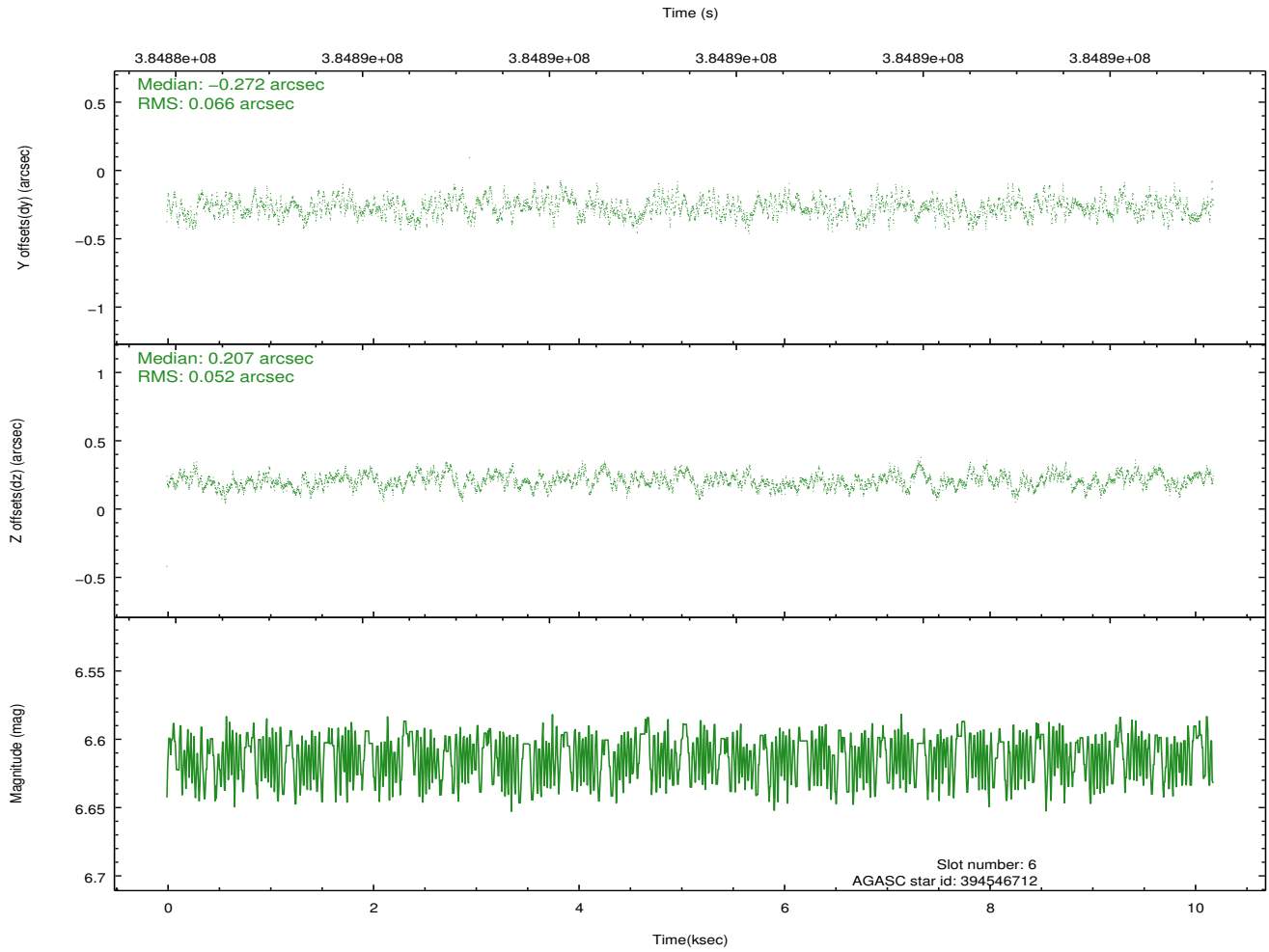
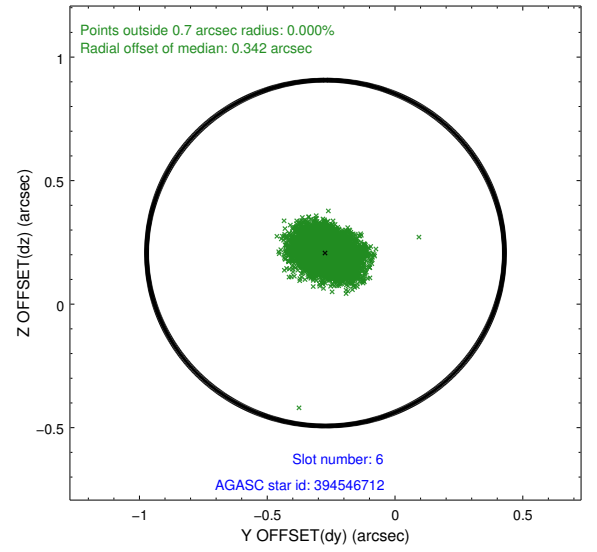
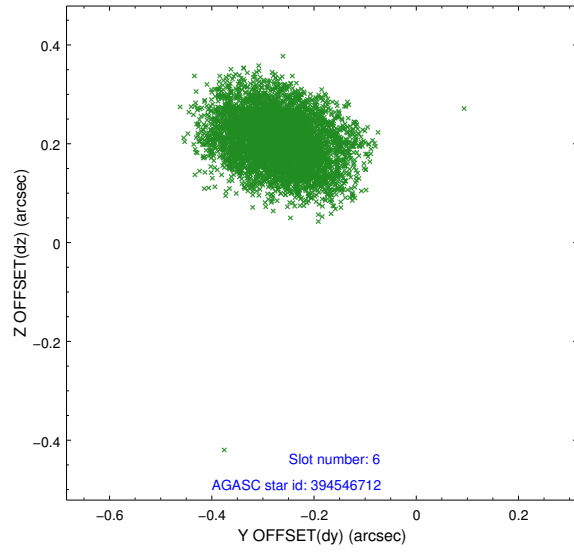
2.4.2 Slot 4



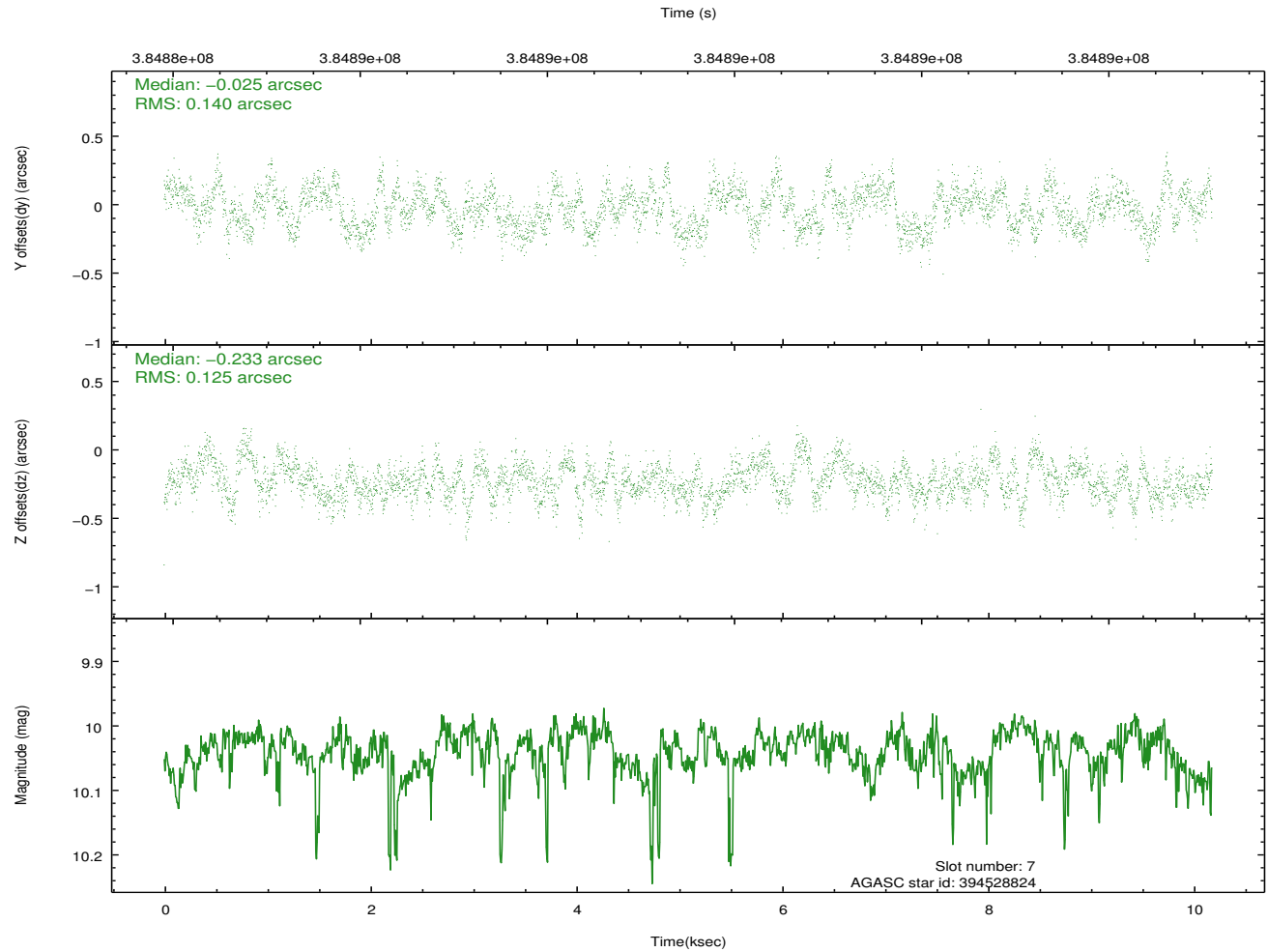
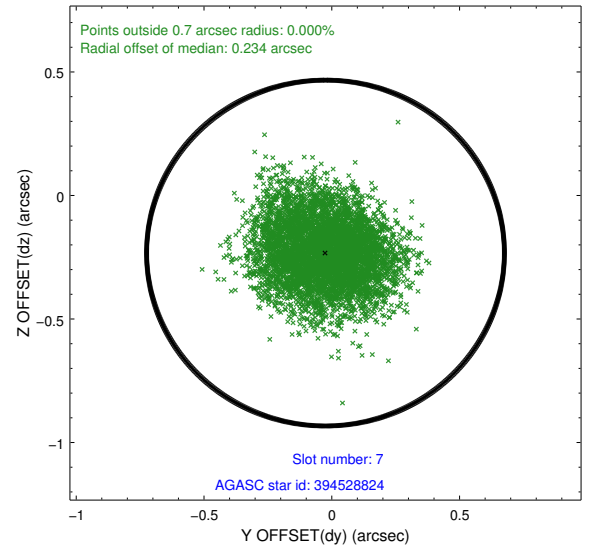
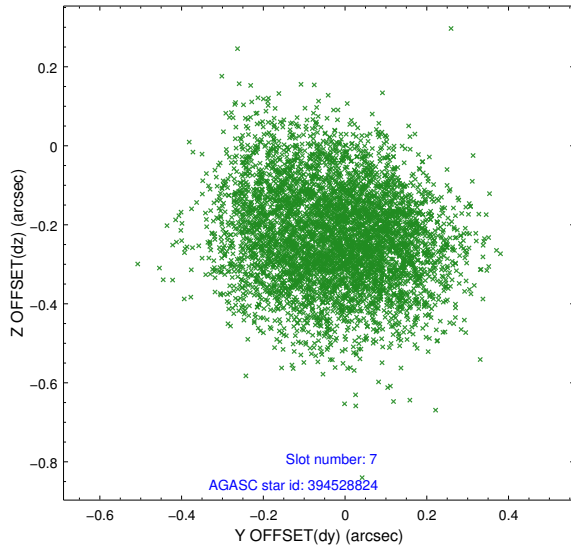
2.4.3 Slot 5



2.4.4 Slot 6

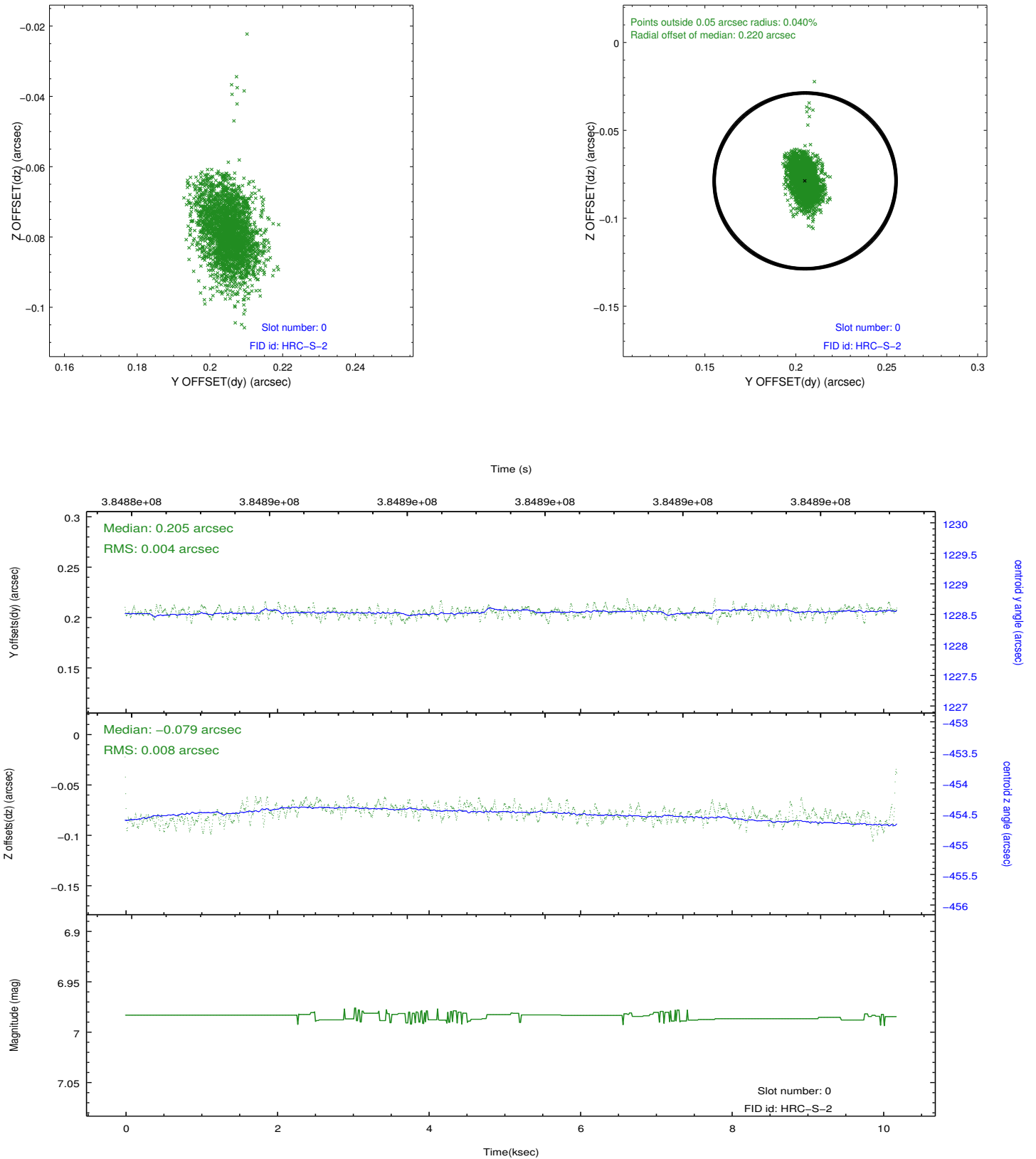


2.4.5 Slot 7

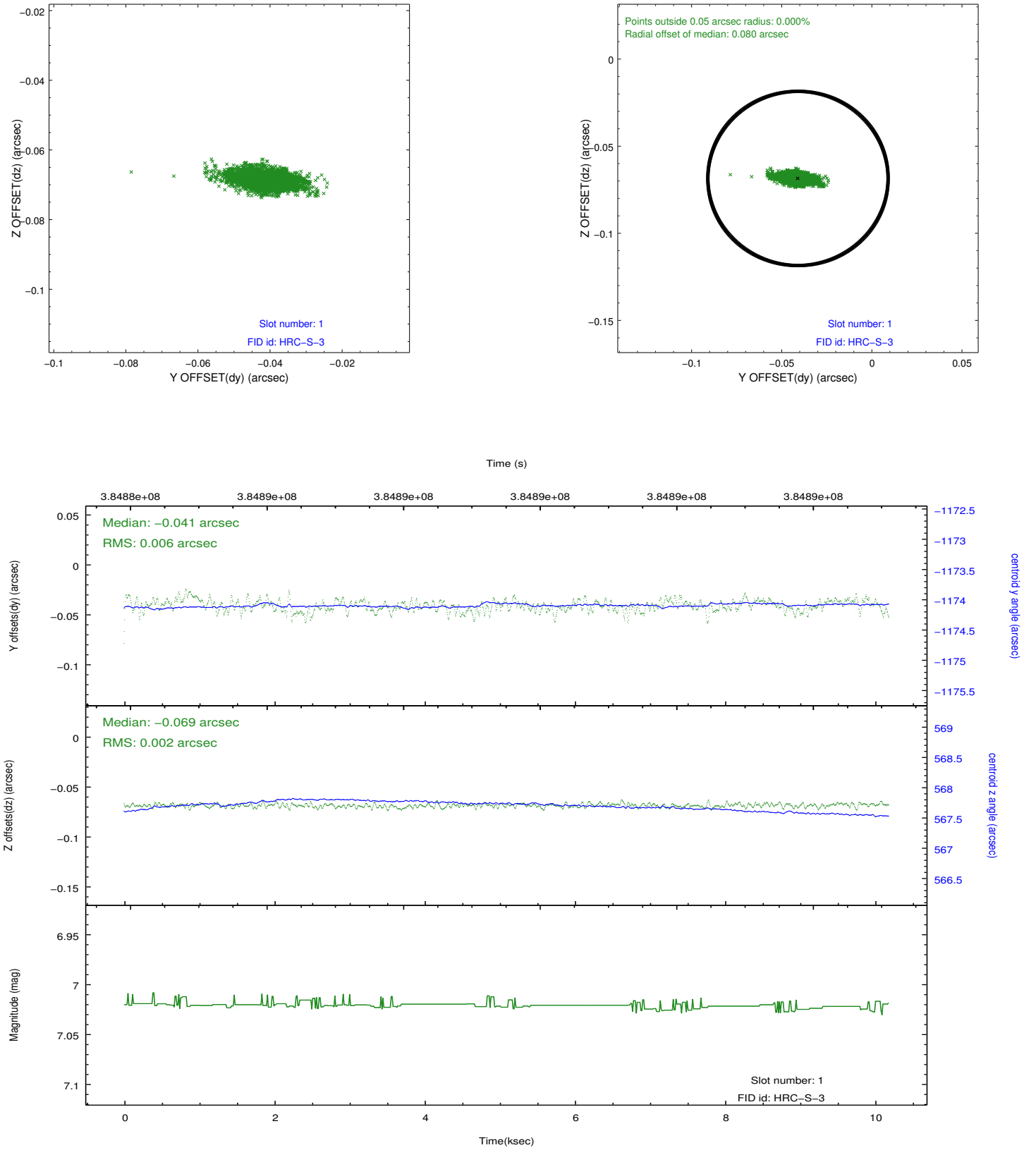


2.5 FID Slots

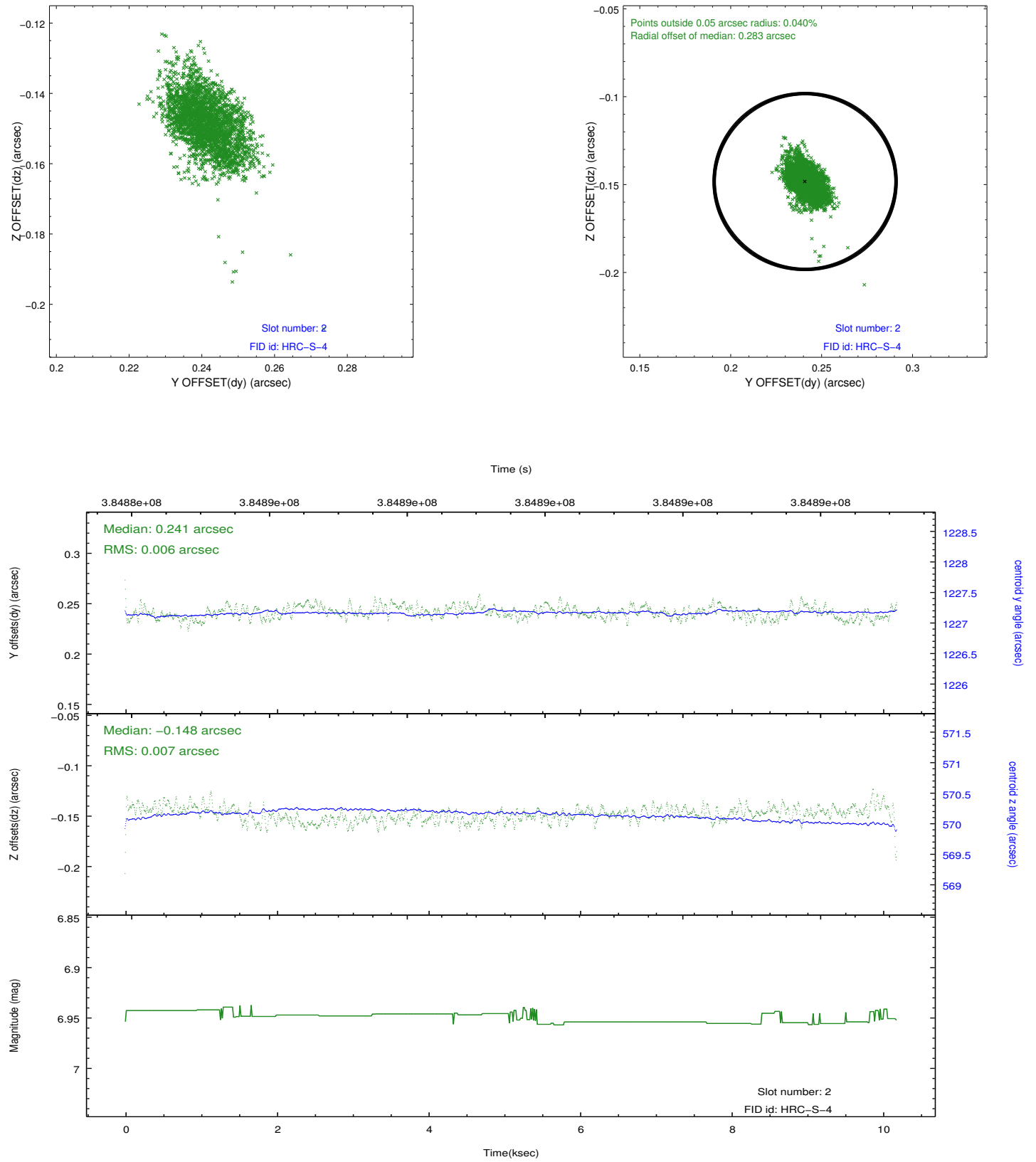
2.5.1 Slot 0



2.5.2 Slot 1

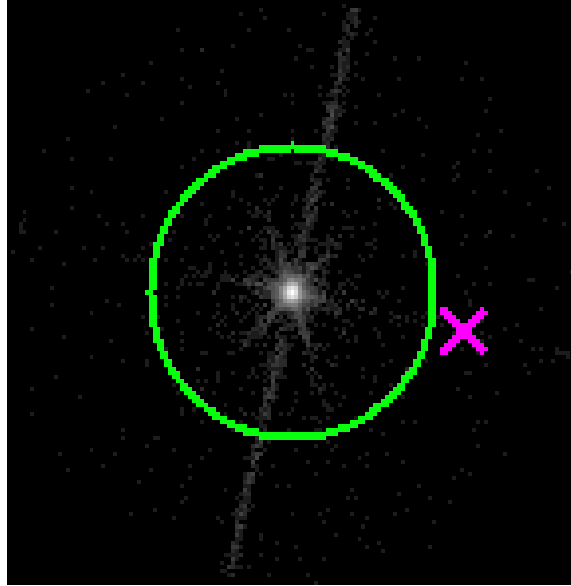


2.5.3 Slot 2

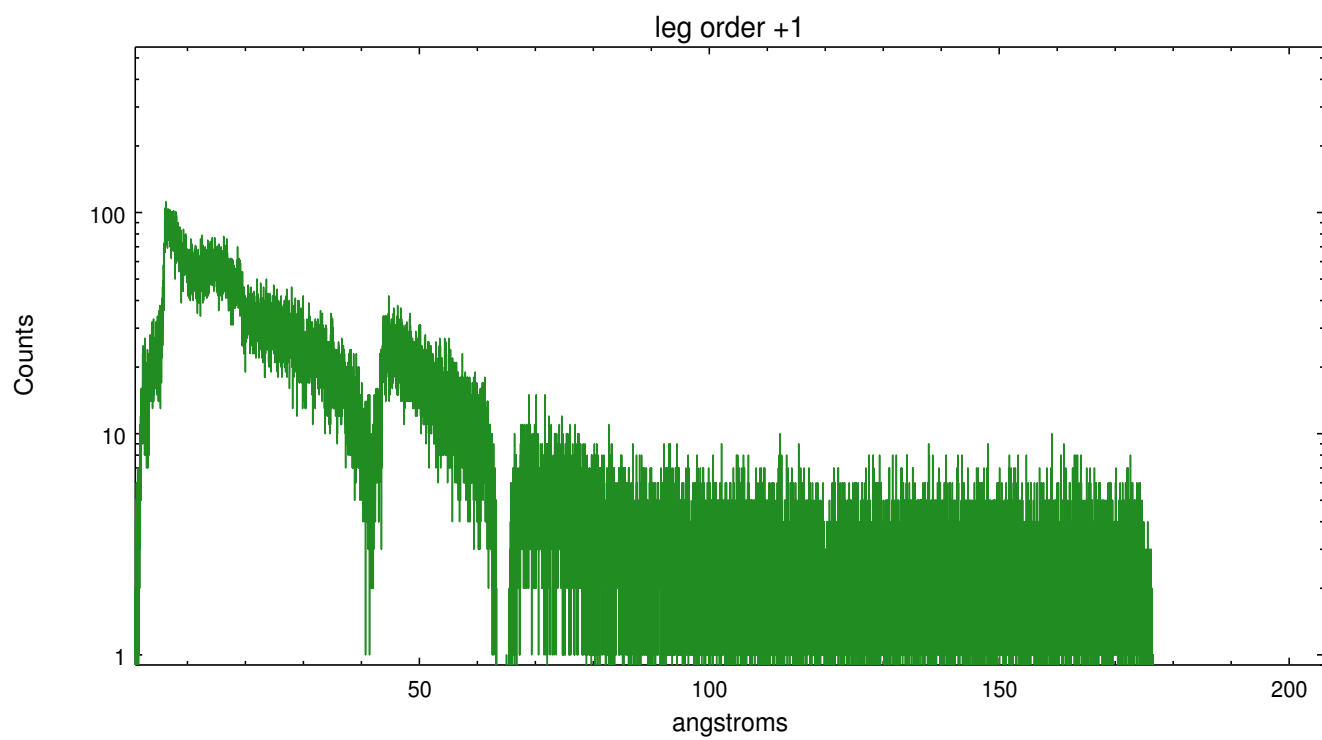
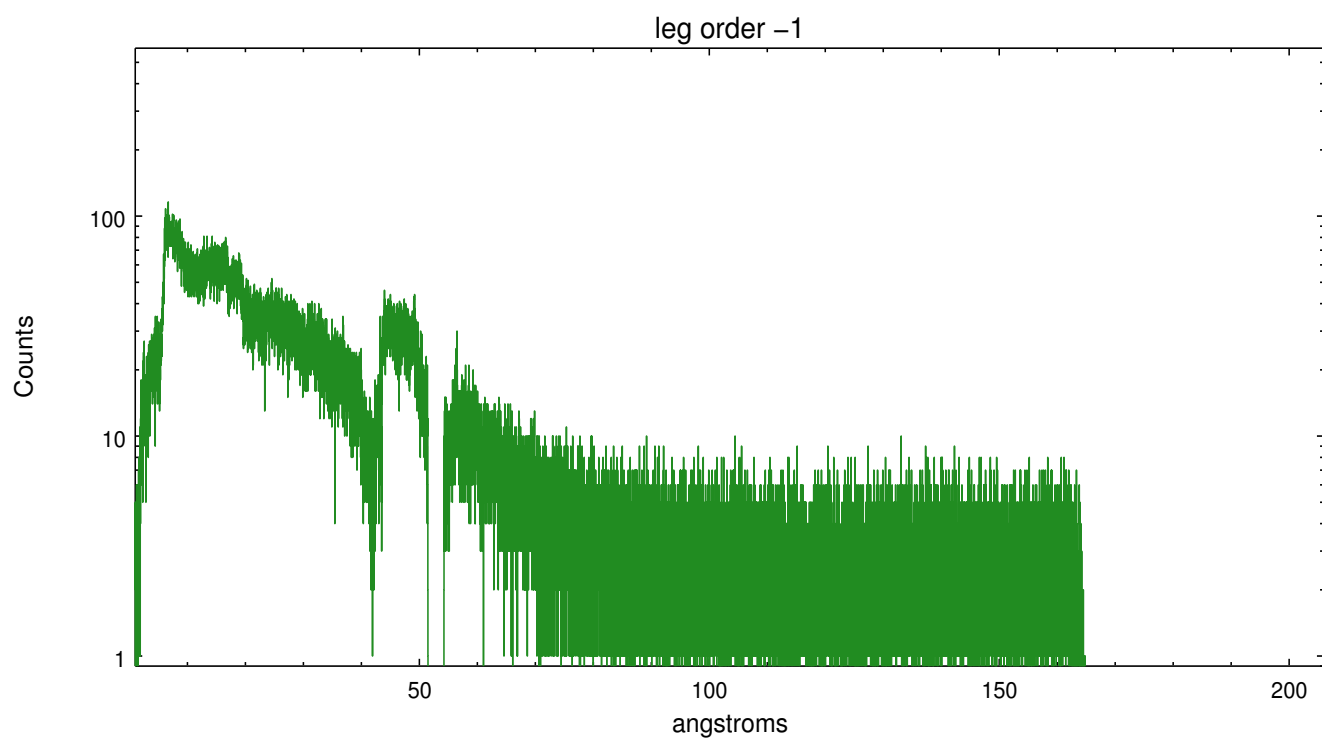


3 Gratings

3.1 LETG Arm



LETG Zero Order



A Summary

A.1 Status

V&V Scientist	Joy Nichols
V&V Date (YYYY-MM-DD)	2012.07.02
V&V Edition	1
V&V Disposition and Status	OK
V&V Charge Time	10.183631767154

A.2 Comments