

V&V Reference Report

L2 ASCDS Version : 8.4.5

Observation 10646 - L2 Version 2
Chandra X-Ray Center

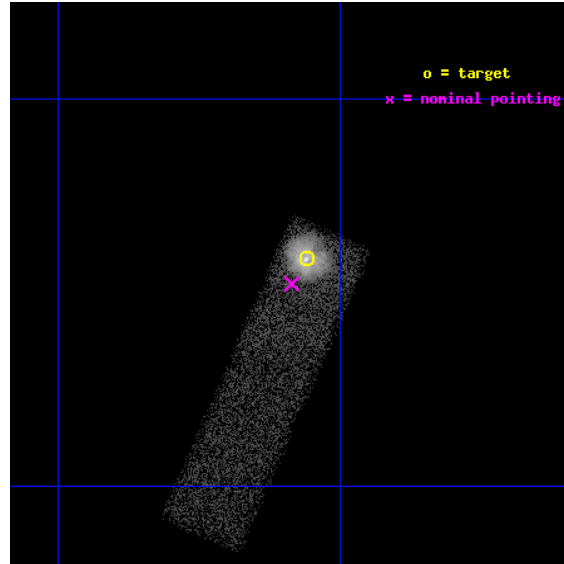
L2 Processing Date : Jun 8 2012

Contents

1	Front	2
2	OBI	3
2.1	OBI	3
2.1.1	Images	3
2.1.2	Bias	3
2.1.3	Parameters	4
2.1.4	Events	4
2.2	Compared Parameters	5
2.3	Aspect	6
2.4	Star Slots	9
2.4.1	Slot 3	9
2.4.2	Slot 4	10
2.4.3	Slot 5	11
2.4.4	Slot 6	12
2.4.5	Slot 7	13
2.5	FID Slots	14
2.5.1	Slot 0	14
2.5.2	Slot 1	15
2.5.3	Slot 2	16
A	Summary	17
A.1	Status	17
A.2	Comments	17

1 Front

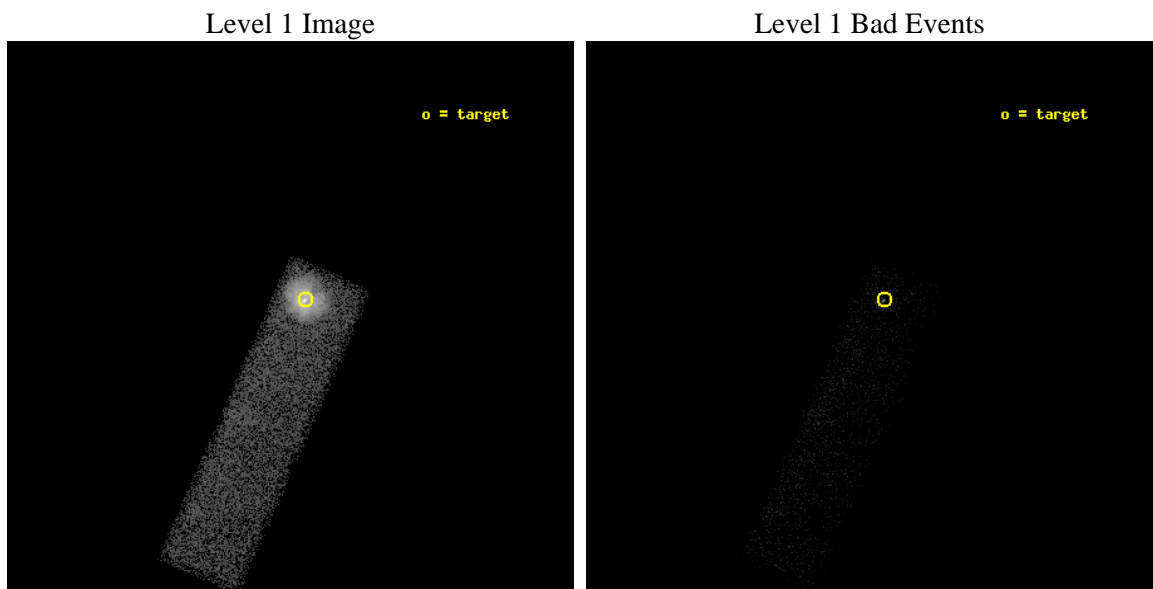
seq_num	590485	Sequence number
obs_id	10646	Observation id
title	AO-10 Observations of the Standard Candles Cas A and G21.5-09.	Pro
observer	Dr. CXC Calibration	Principal investigator
object	G21.5-09[S3,-120,1.0,0,0]	Source name
dtcycle	0	
cycle	P	events from which exps? Prim/Second/Both
ra_targ	278.389583	Observer's specified target RA [deg]
dec_targ	-10.568528	Observer's specified target Dec [deg]
ra_nom	278.39622166363	Nominal RA [deg]
dec_nom	-10.579440633907	Nominal Dec [deg]
roll_nom	113.87660807896	Nominal Roll [deg]
revision	2	Processing version of data
ontime	10026.400149465	Sum of GTIs [s]
livetime	9537.1446299483	Livetime [s]
ontime7	10026.400149465	Sum of GTIs [s]
l2events	41116	Number of level 2 events



2 OBI

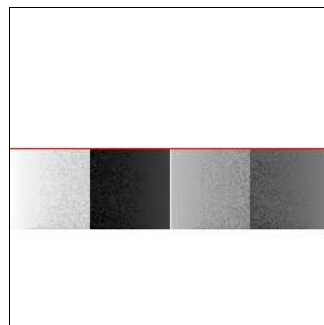
2.1 OBI

2.1.1 Images



2.1.2 Bias

Chip 7



2.1.3 Parameters

obi_num	0	Obi number	sched_exp_time	10000.000000	[s] Scheduled observation exposure time
ascdsver	8.4.5	Processing system revision	ontime	10026.400149465	Sum of GTIs [s]
caldsver	4.4.10	 	ontime7	10026.400149465	Sum of GTIs [s]
date	2012-06-08T06:20:55	Date and time of file creation	l1events	51364	Number of level 1 events
revision	2	Processing version of data			

2.1.4 Events

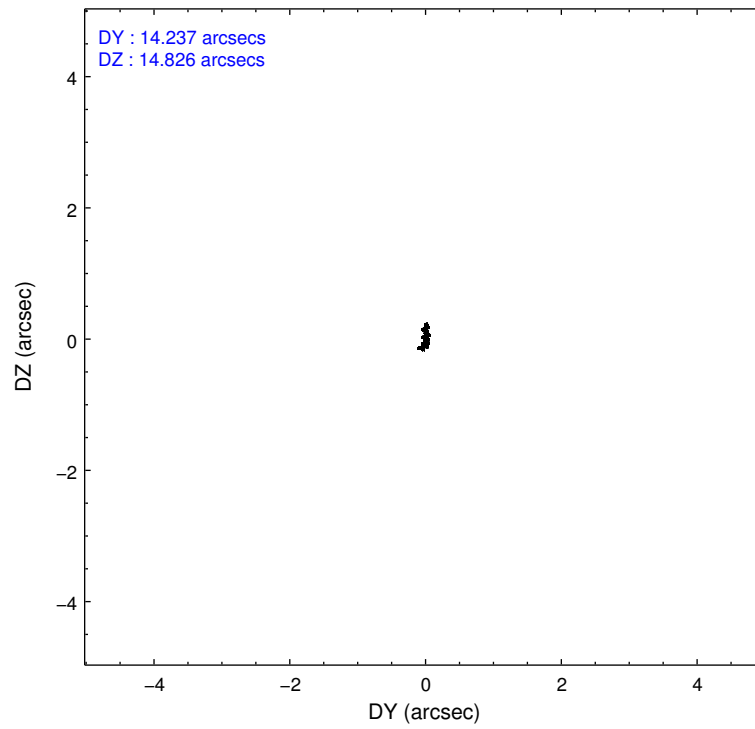
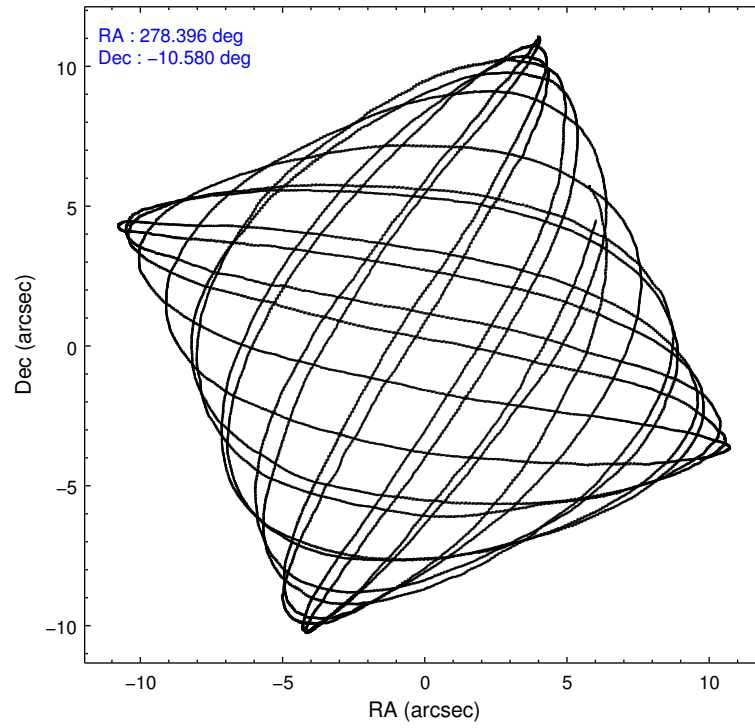
	ccd 7
level 1 events	51364
rejected events	9848
rejected %	19%

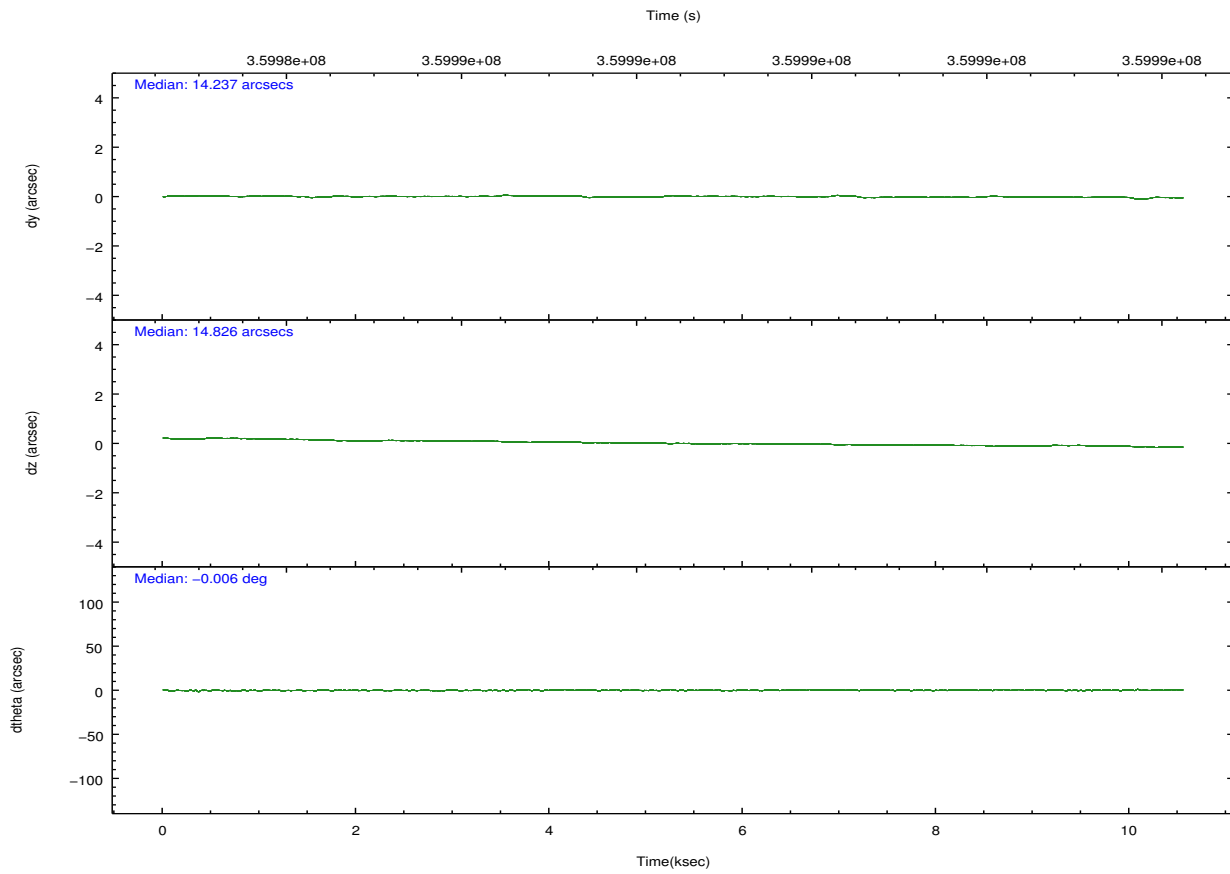
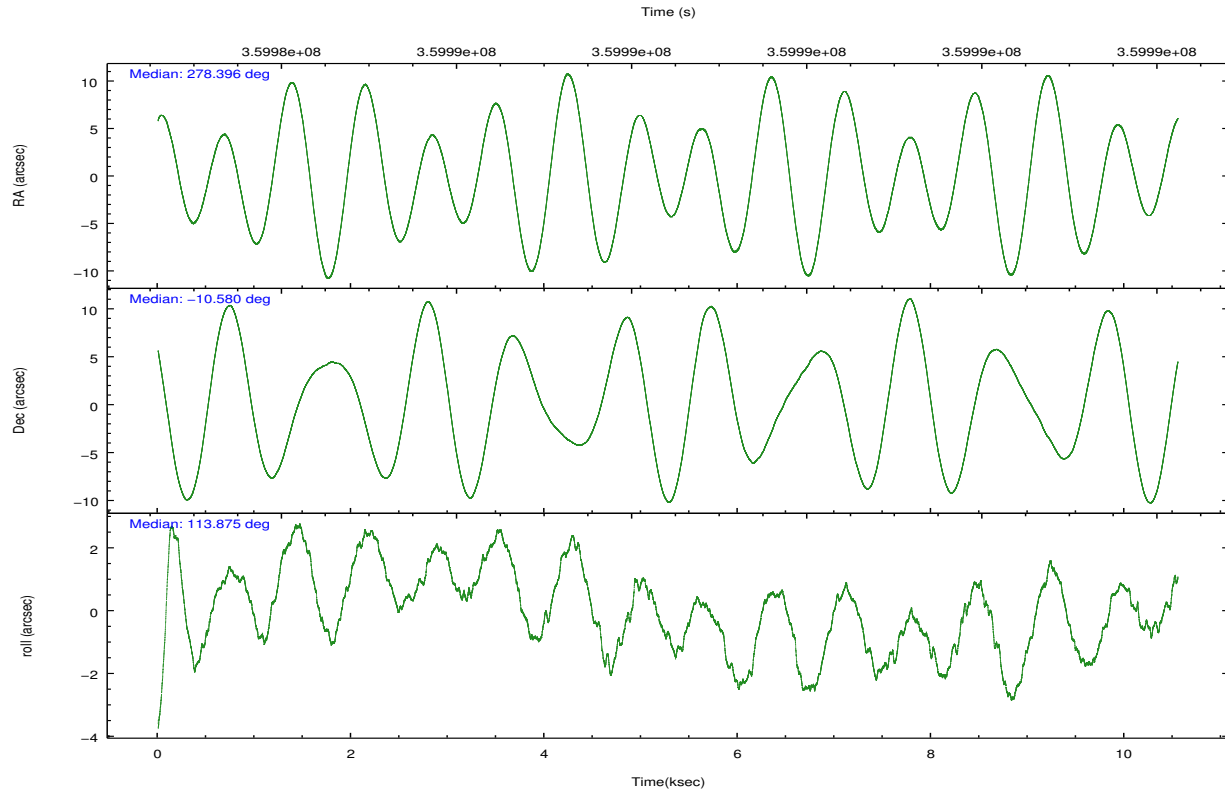
	ccd 7
grade 0 events	6858
	13%
grade 1 events	59
	0%
grade 2 events	9628
	18%
grade 3 events	4723
	9%
grade 4 events	4446
	8%
grade 5 events	2448
	4%
grade 6 events	15866
	30%
grade 7 events	7336
	14%

2.2 Compared Parameters

Parameter	Planned	Actual	Parameter	Planned	Actual
Instrument	ACIS	ACIS	Obspar format version number	7	7
Detector	ACIS-7	ACIS-7	Obspar file type	PREDICTED	ACTUAL
Grating	NONE	NONE	Obspar update status	NONE	UPDATED
Data mode	VFAINT	VFAINT	Number of optional ACIS chips dropped	0	0
Observation mode	POINTING	POINTING	On-chip summing requested	N	N
[deg] Pointing RA	278.418914	278.3962216636274	Subarray requested	CUSTOM	1/4
[deg] Pointing Dec	-10.595183	-10.57944063390683	Subarray start row	320	320
[deg] Pointing Roll	113.724148	113.8766080789648	Subarray row count	256	256
[s] Window start time (MET)	349833666.184000	349833666.184000	Alternating exposures requested	N	N
[s] Window stop time (MET)	360115266.184000	360115266.184000	[s] Primary exposure time	0.000000	0.8
[mm] SIM focus pos	-0.684267	-0.6828225247311905			
[mm] SIM defocus	0	0.001444936568705701			
[mm] SIM translation stage pos	-190.132523	-190.1400660498719			
[mm] SIM translation stage offset	0	0.00754346686406393			
[s] Observation start time (MET)	359983697.184000	359982953.09732			
Observation start date	2009-05-29T11:27:11	2009-05-29T11:15:53			
[s] Observation end time (MET)	359993697.184000	359994863.59791			
Observation end date	2009-05-29T14:13:51	2009-05-29T14:34:23			
Read mode	TIMED	TIMED			

2.3 Aspect



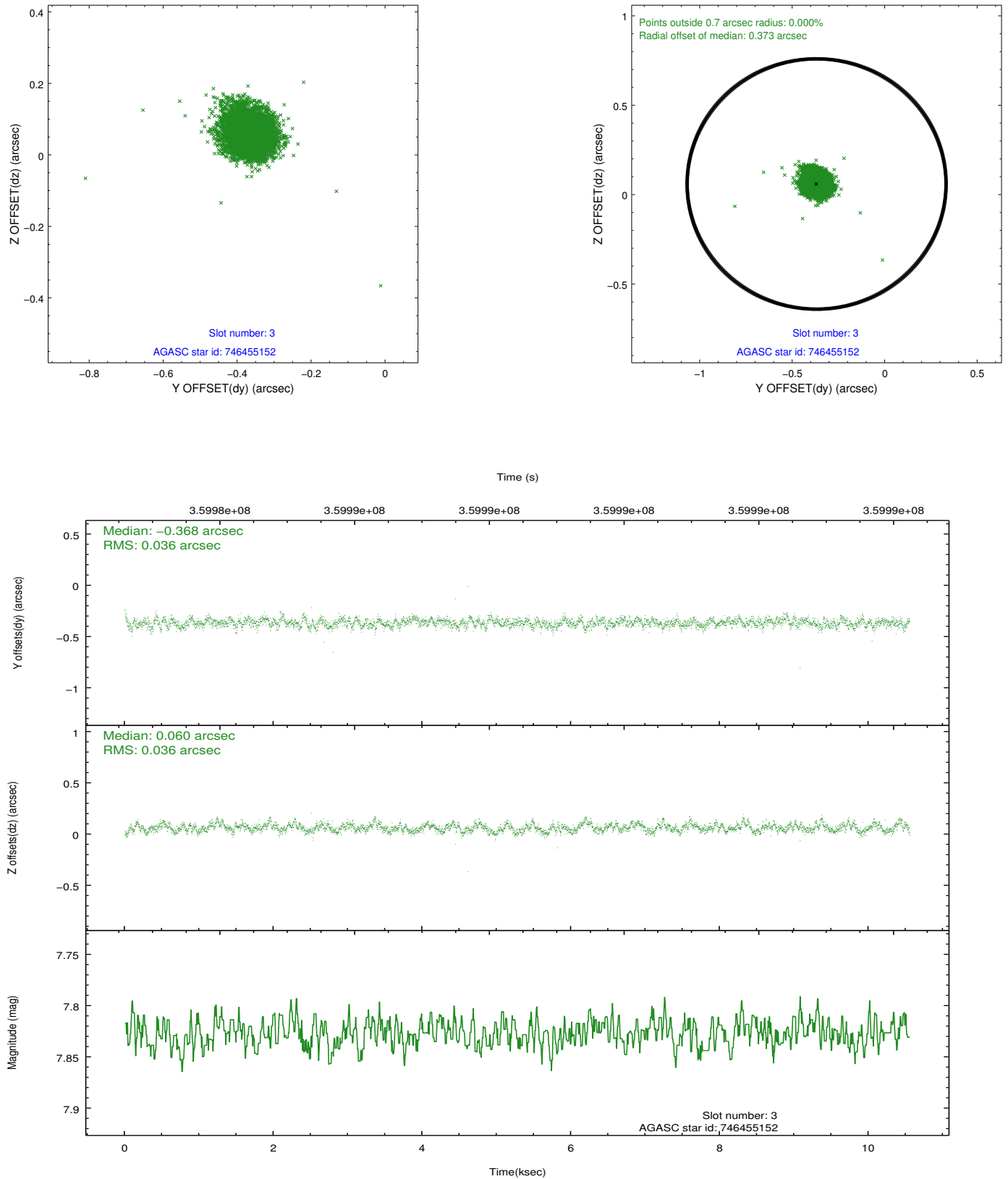


Slot Statistics

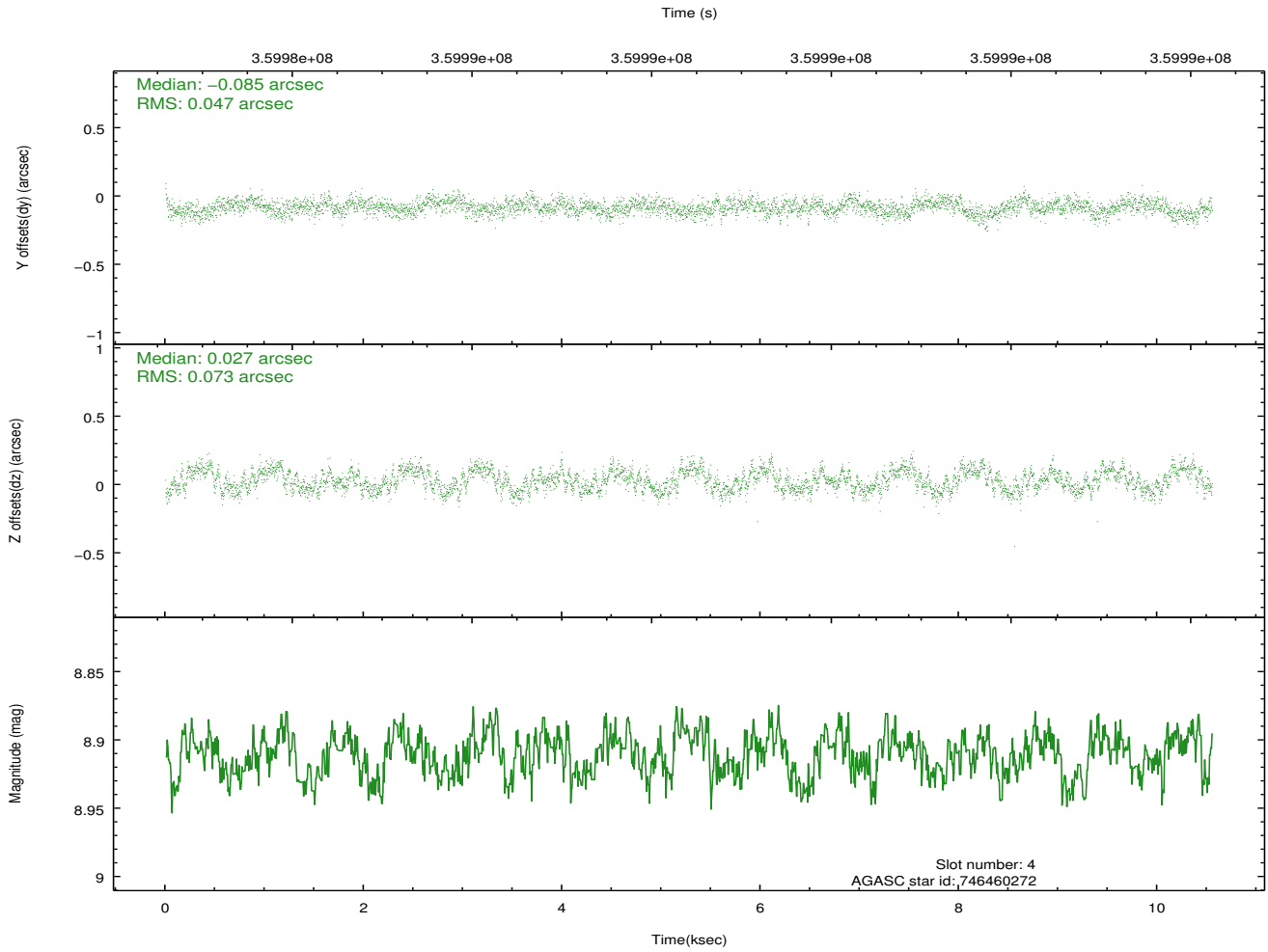
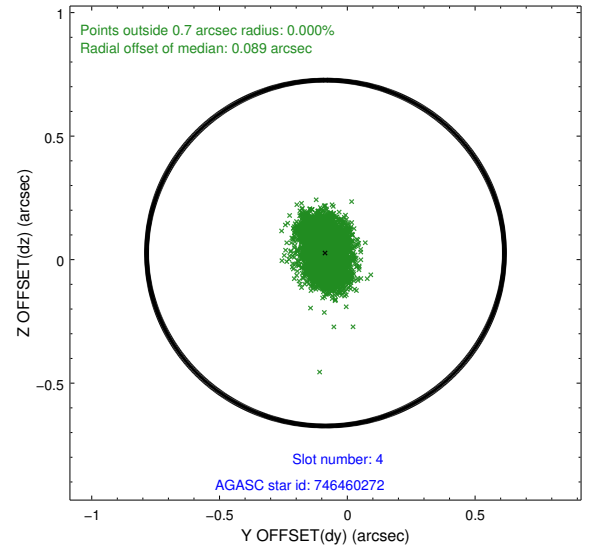
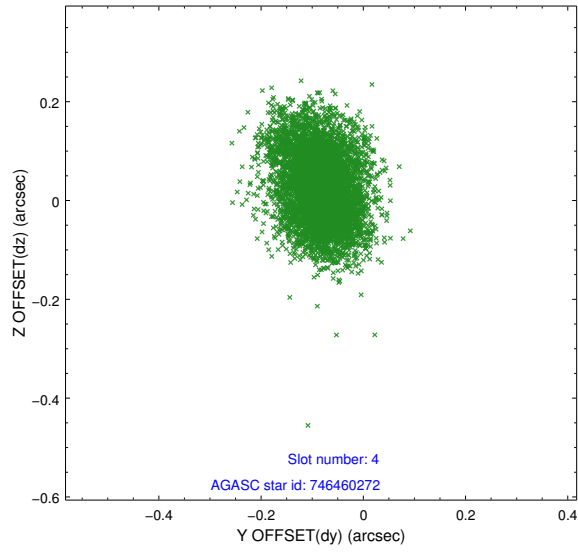
slot	status	id	mag	n_pts	med_dy	med_dz	dr1	dr2	ra	dec	mean_y	mean_z
0	FID	ACIS-S-1	6.99	2574	0.016	-0.005	0.008	0.013	0.000000	0.000000	928.88	-1731.85
1	FID	ACIS-S-4	7.00	2574	0.141	0.001	0.007	0.011	0.000000	0.000000	2146.67	171.81
2	FID	ACIS-S-5	7.03	2573	-0.184	0.017	0.006	0.011	0.000000	0.000000	-1819.57	165.95
3	GUIDE	746455152	7.83	5146	-0.368	0.060	0.053	0.086	278.447893	-9.976732	1997.24	-989.58
4	GUIDE	746460272	8.91	5145	-0.085	0.027	0.092	0.146	278.847488	-10.152127	849.25	-2031.68
5	GUIDE	746462392	8.53	5148	0.140	0.019	0.085	0.135	279.038421	-10.890715	-1858.37	-1576.73
6	GUIDE	746462456	8.39	5145	0.168	-0.129	0.081	0.132	278.652171	-10.530173	-118.99	-849.87
7	GUIDE	746462680	9.03	5145	0.148	0.020	0.088	0.143	278.660755	-10.782756	-961.84	-511.18

2.4 Star Slots

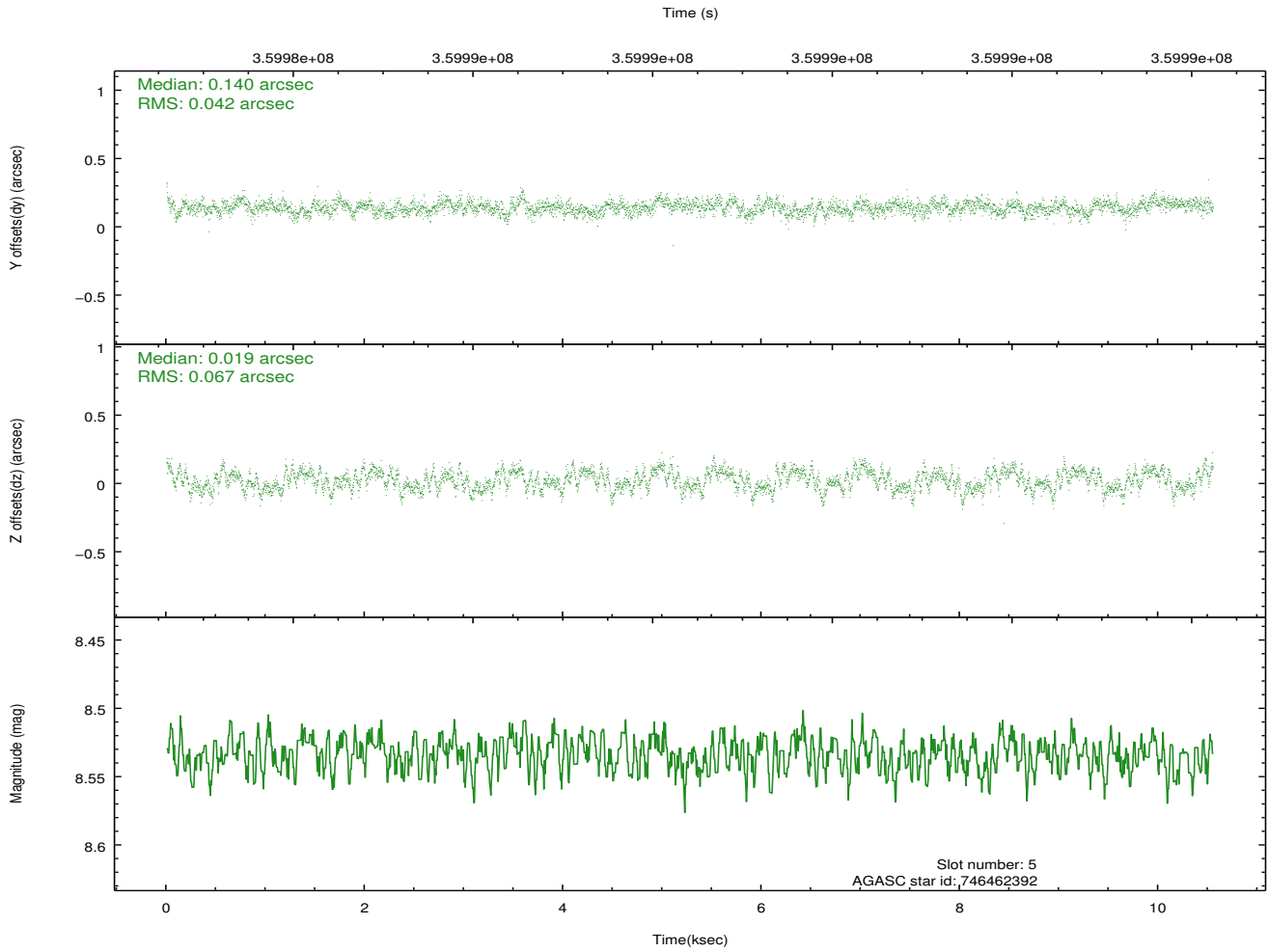
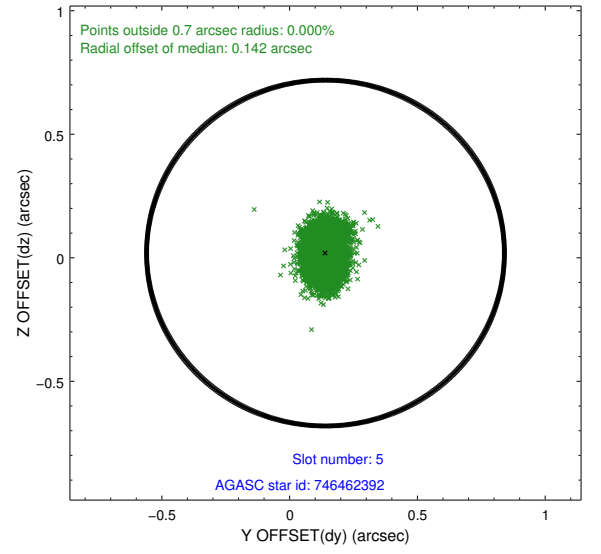
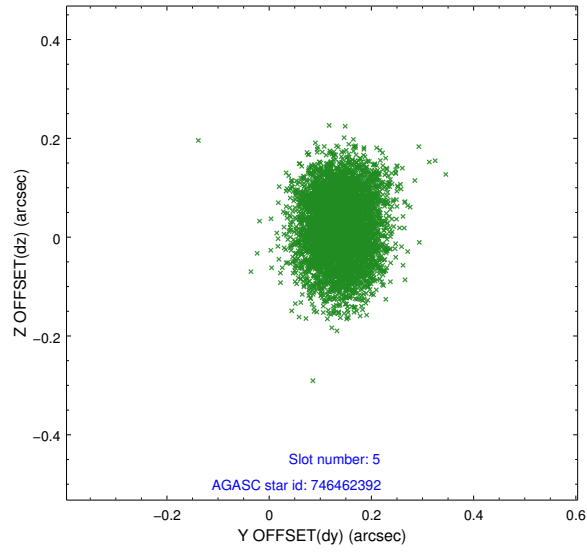
2.4.1 Slot 3



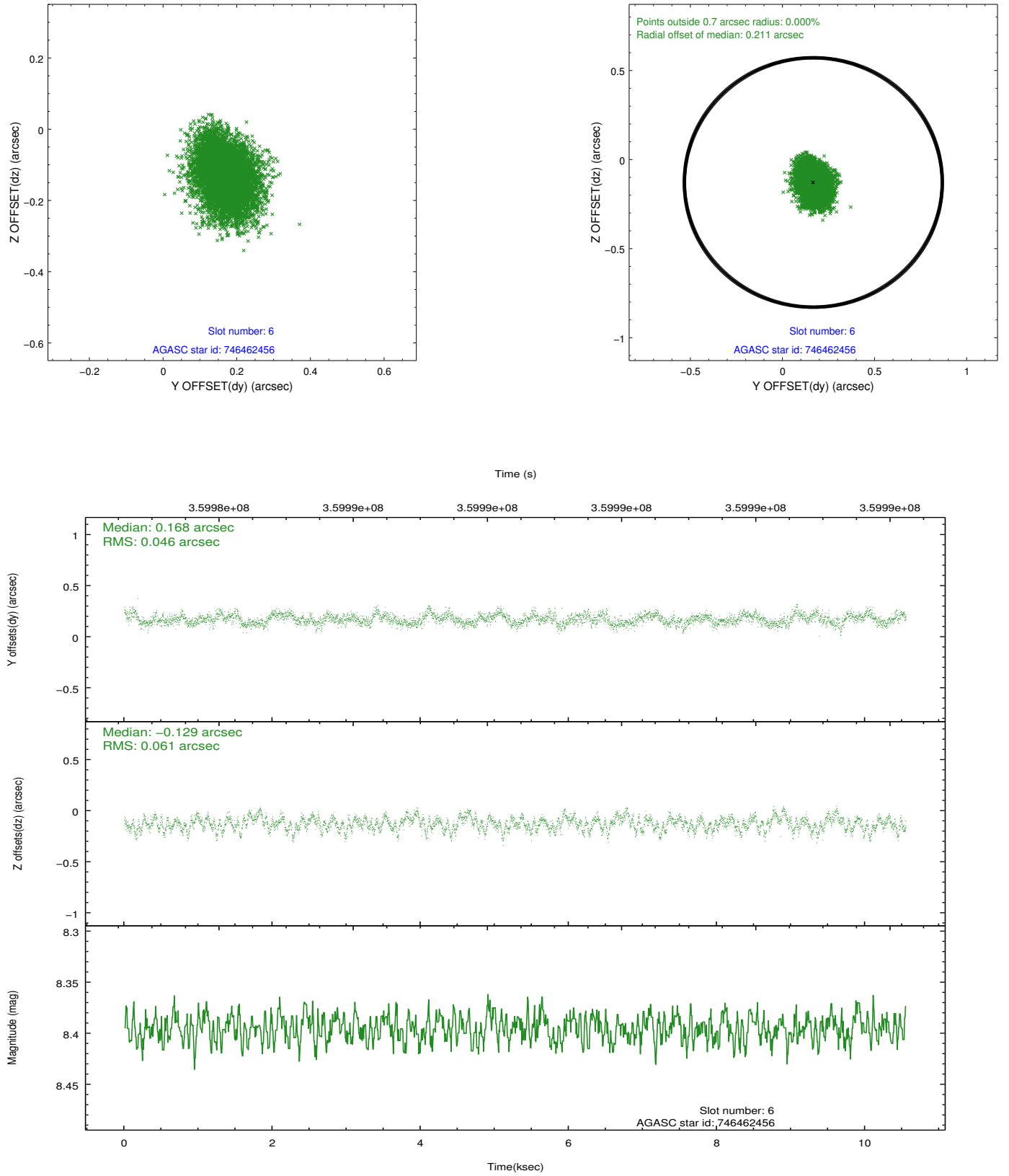
2.4.2 Slot 4



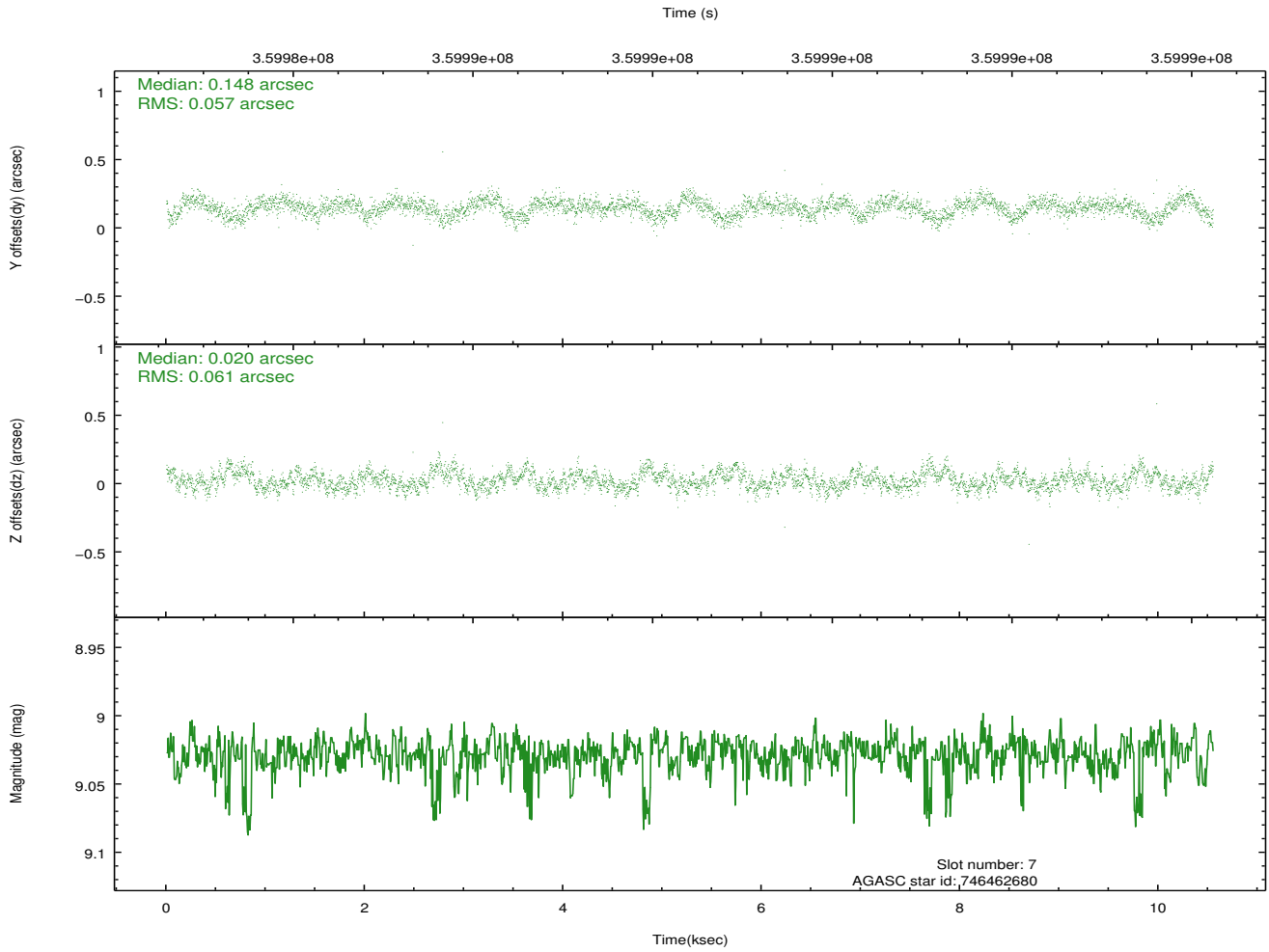
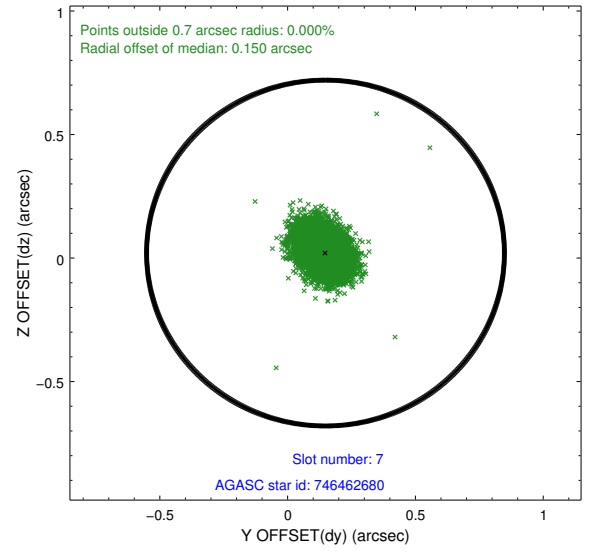
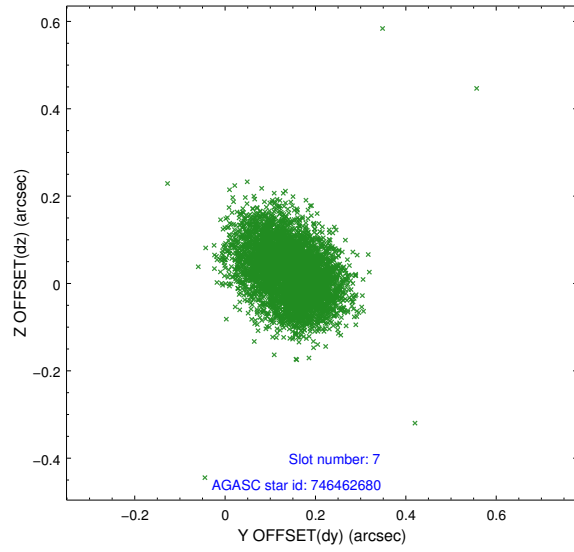
2.4.3 Slot 5



2.4.4 Slot 6

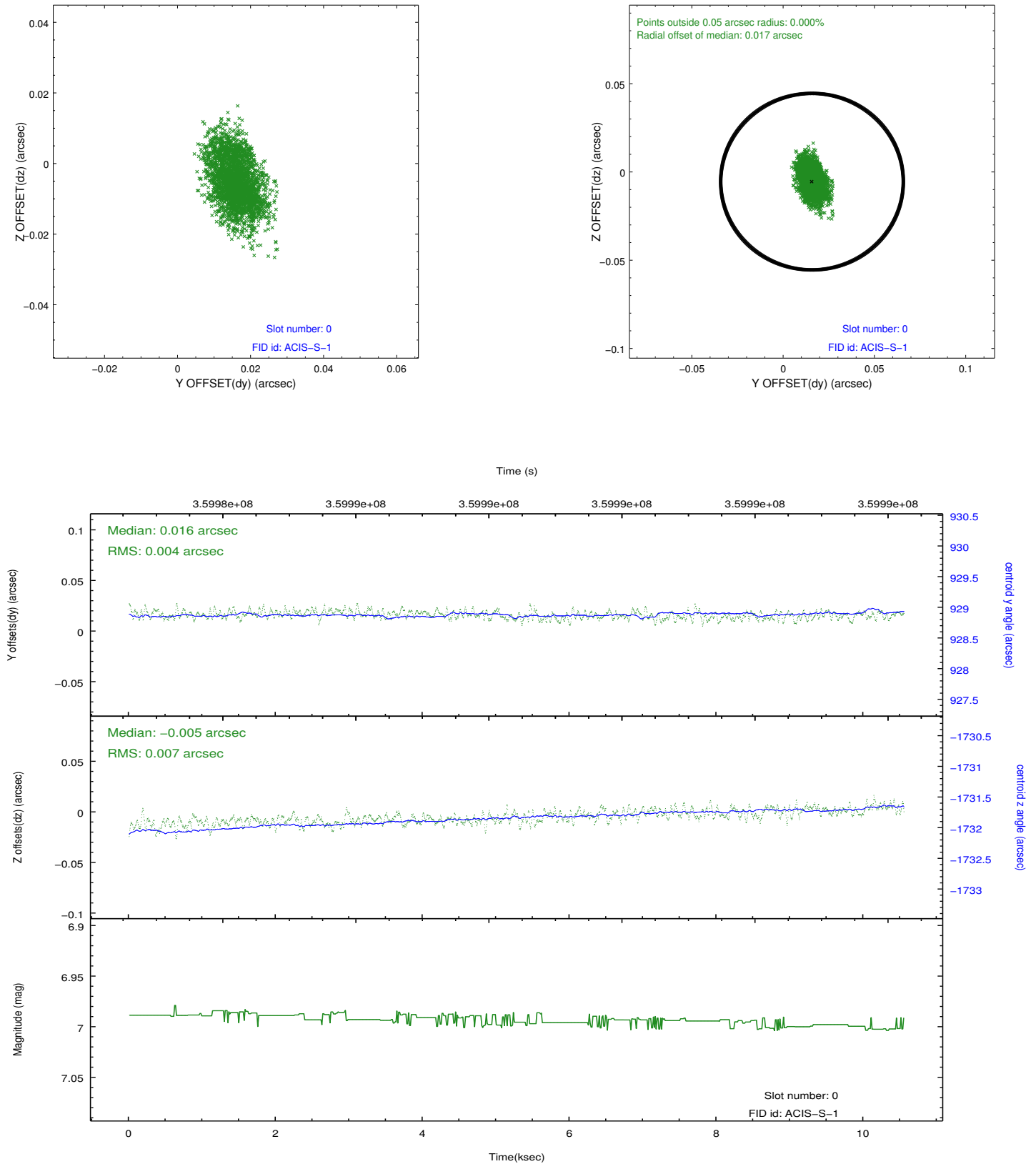


2.4.5 Slot 7

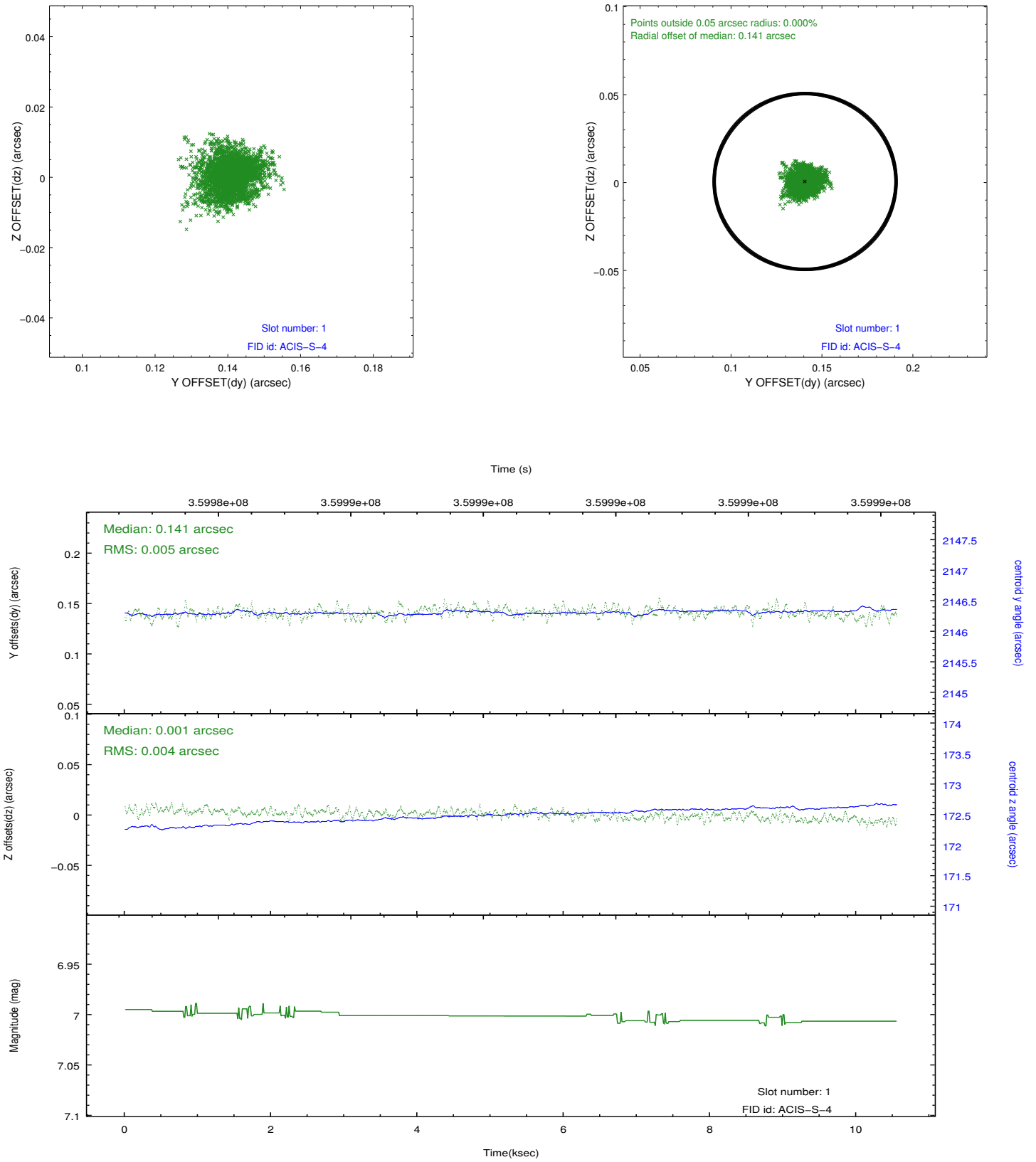


2.5 FID Slots

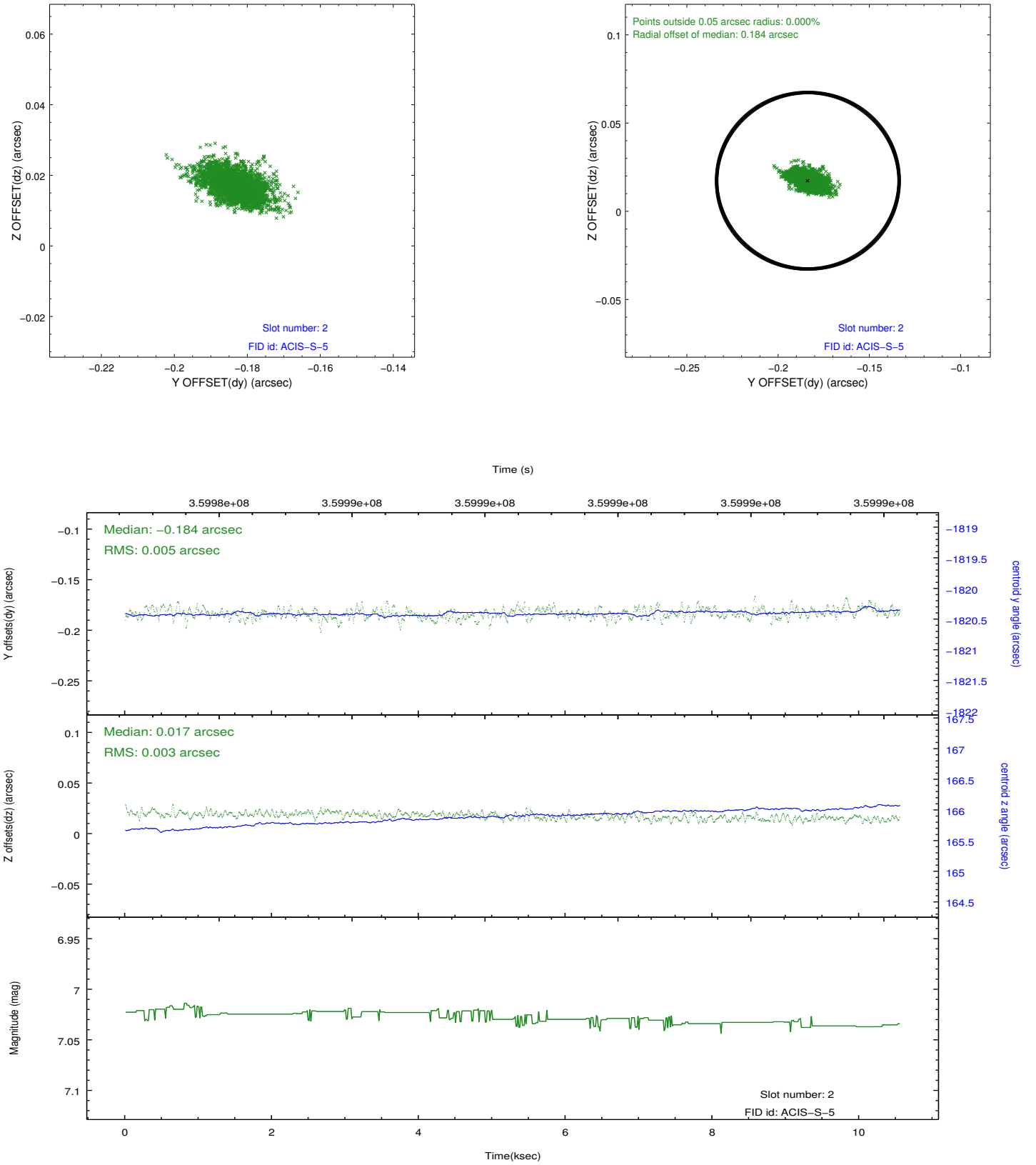
2.5.1 Slot 0



2.5.2 Slot 1



2.5.3 Slot 2



A Summary

A.1 Status

V&V Scientist	Jen Lauer
V&V Date (YYYY-MM-DD)	2012.06.11
V&V Edition	1
V&V Disposition and Status	OK
V&V Charge Time	10.0264001

A.2 Comments

Window constraint met.