

V&V Reference Report

L2 ASCDS Version : 8.4.5

Observation 10636 - L2 Version 3
Chandra X-Ray Center

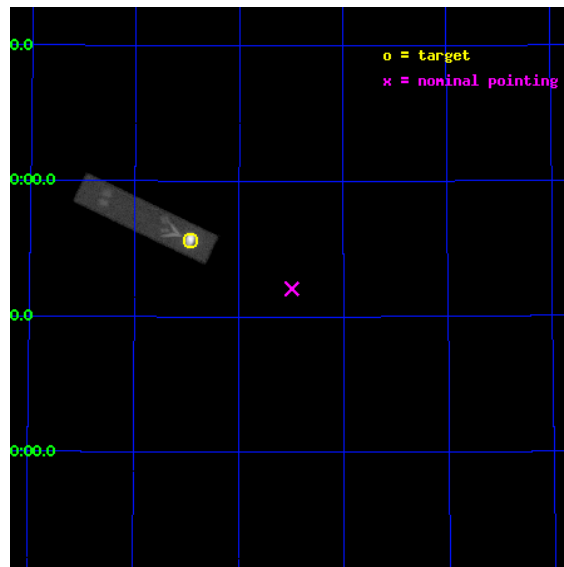
L2 Processing Date : Aug 13 2012

Contents

1	Front	2
2	OBI	3
2.1	OBI	3
2.1.1	Images	3
2.1.2	Parameters	4
2.1.3	Events	4
2.2	Compared Parameters	5
2.3	Aspect	6
2.4	Star Slots	9
2.4.1	Slot 3	9
2.4.2	Slot 4	10
2.4.3	Slot 5	11
2.4.4	Slot 6	12
2.4.5	Slot 7	13
2.5	FID Slots	14
2.5.1	Slot 0	14
2.5.2	Slot 1	15
2.5.3	Slot 2	16
A	Summary	17
A.1	Status	17
A.2	Comments	17

1 Front

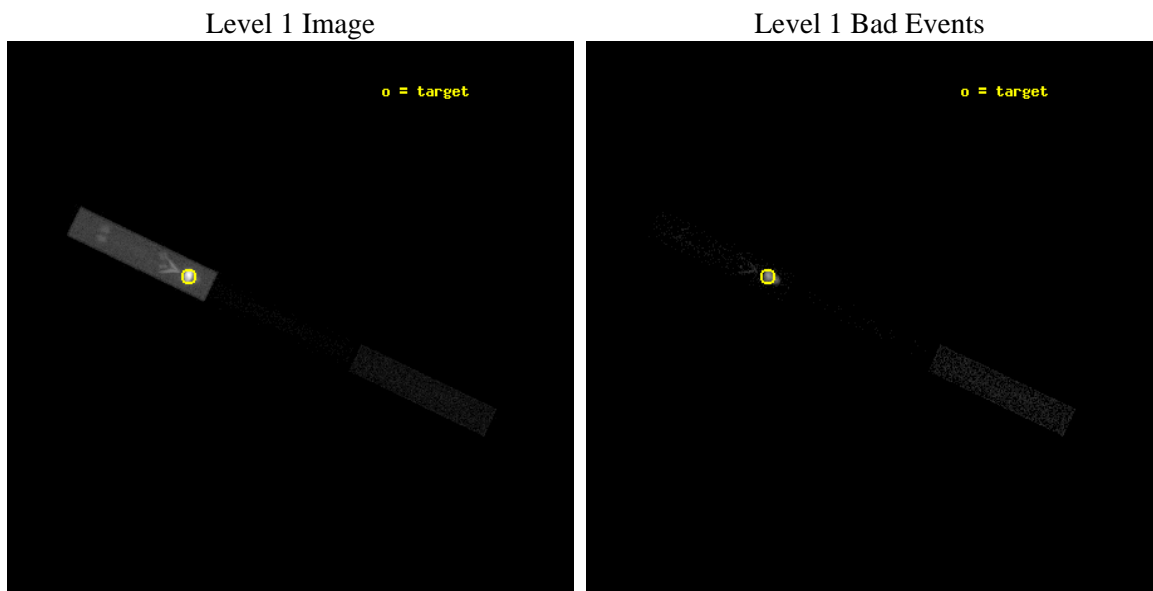
seq_num	290872	Sequence number
obs_id	10636	Observation id
title	AO-10 Measurements of the optical/UV Transmission of the HRC Filters.	Proposal title
observer	Dr. CXC Calibration	Principal investigator
object	Vega	Source name
ra_targ	279.235	Observer's specified target RA [deg]
dec_targ	38.783778	Observer's specified target Dec [deg]
ra_nom	278.74636811764	Nominal RA [deg]
dec_nom	38.6044173743	Nominal Dec [deg]
roll_nom	205.41918671186	Nominal Roll [deg]
revision	3	Processing version of data
ontime	2178.1251090169	[s]
liveltime	808.51633769577	Ontime multiplied by DTCOR
l2events	385628	Number of level 2 events



2 OBI

2.1 OBI

2.1.1 Images



2.1.2 Parameters

obi_num	0	Obi number	sched_exp_time	2000.000000	[s] Scheduled observation exposure time
ascdsver	8.4.5	Processing system revision	ontime	2178.1251090169	[s]
caldsver	4.5.1.1	 	l1events	454430	Number of level 1 events
date	2012-08-13T11:59:34	Date and time of file creation			
revision	3	Processing version of data			

2.1.3 Events

Level 1 Events

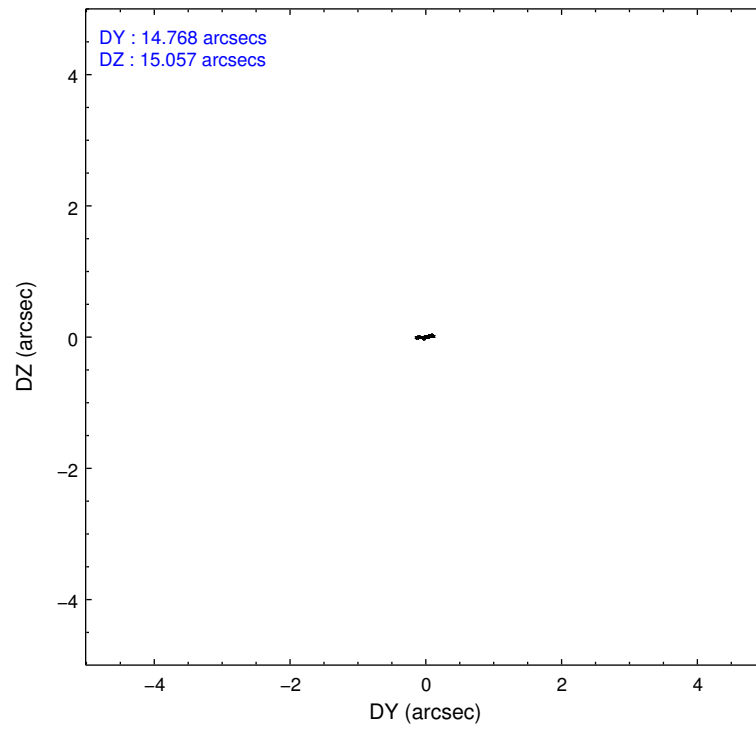
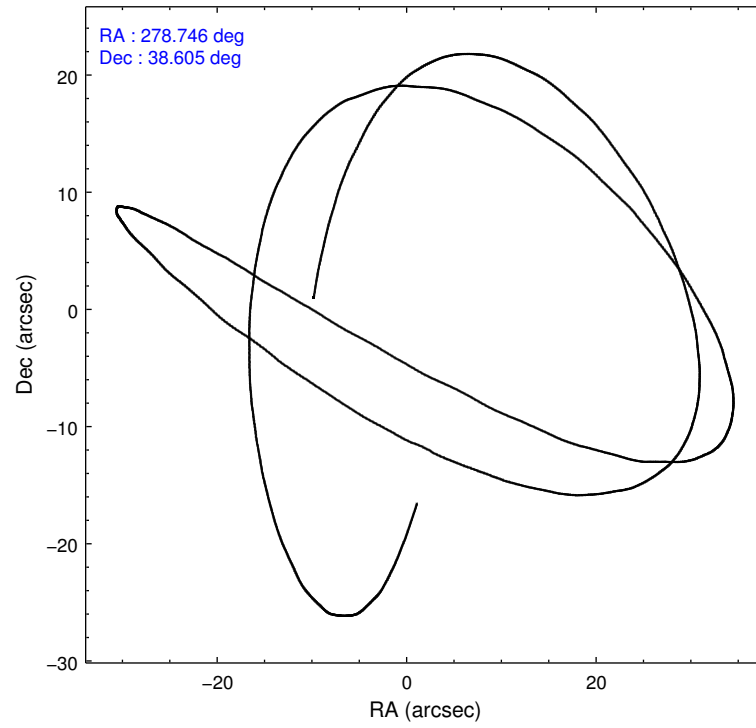
	segment 1	segment 2	segment 3
level 1 events	447387	417	6626
rejected events	45787	395	6536
rejected %	10%	94%	98%

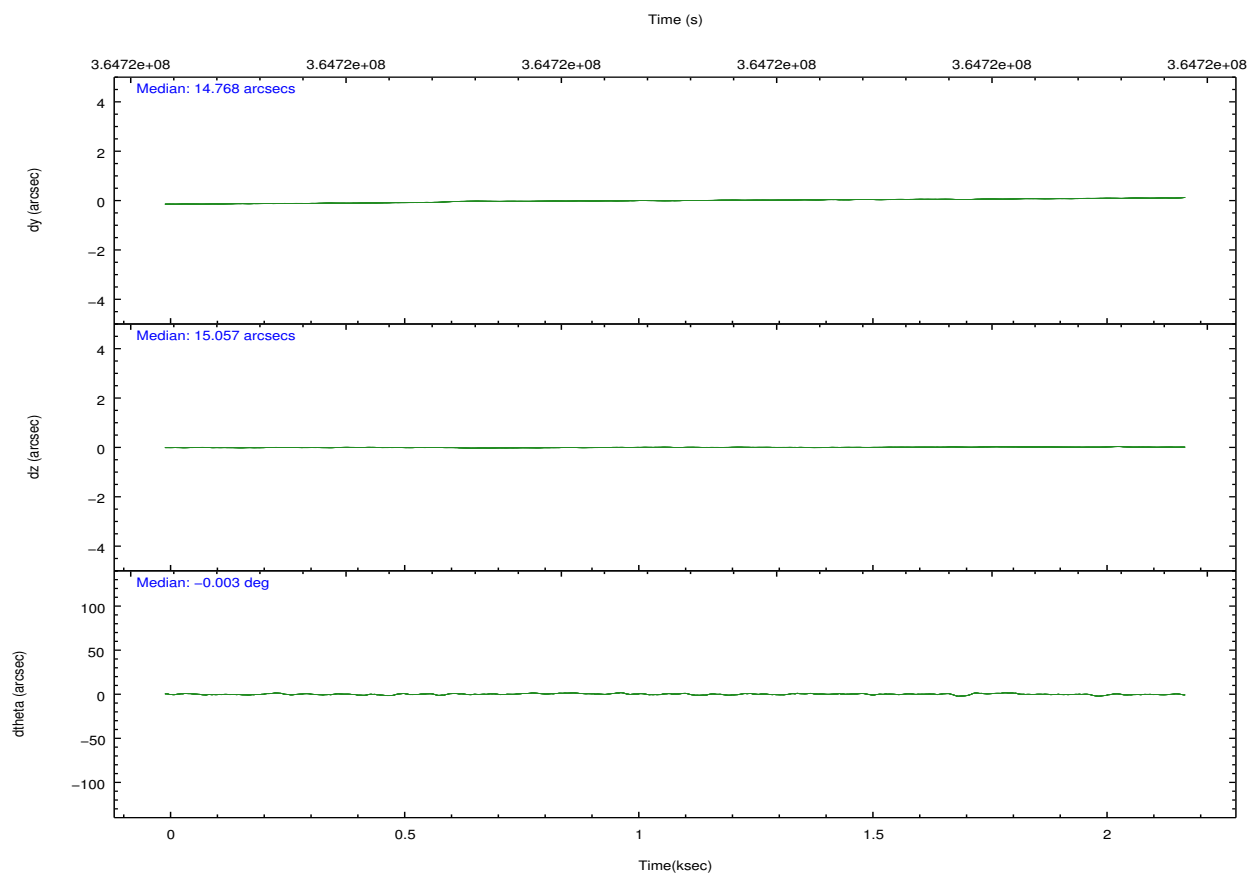
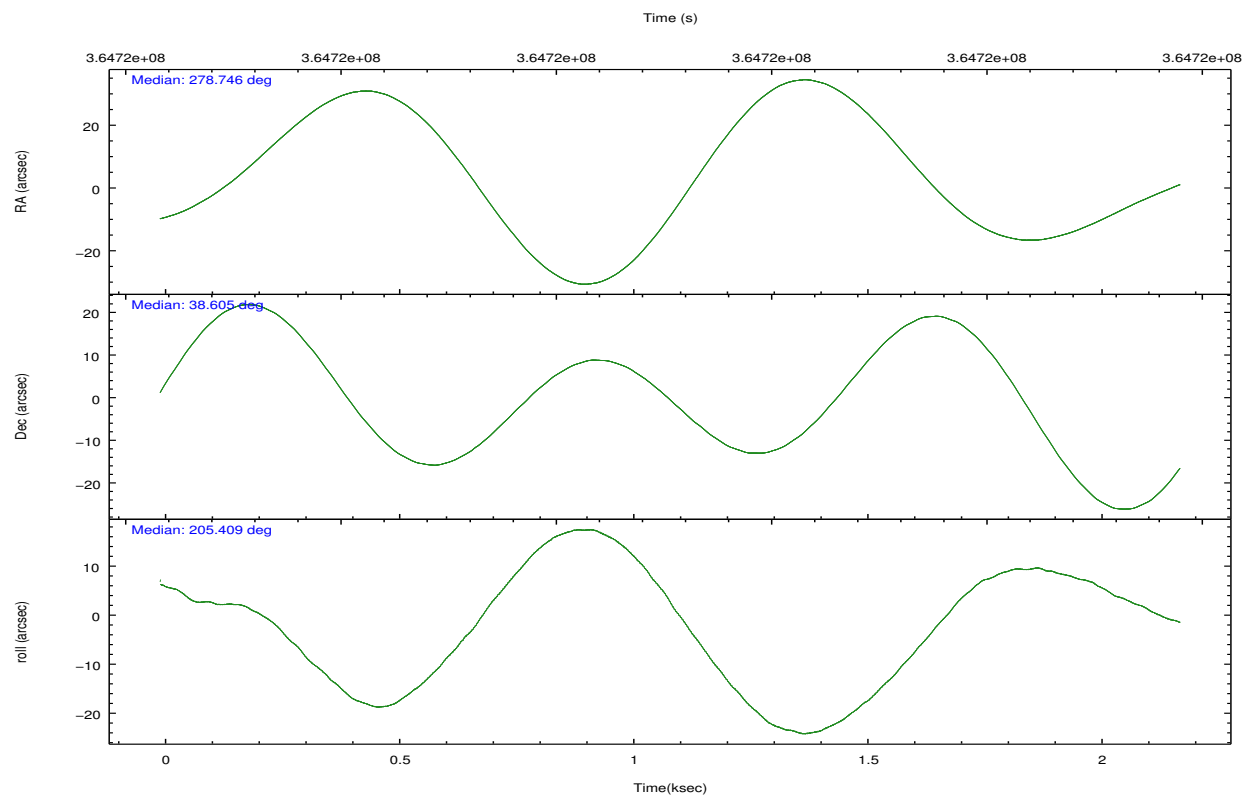
2.2 Compared Parameters

Parameter	Planned	Actual
Instrument	HRC	HRC
Detector	HRC-S	HRC-S
Grating	NONE	NONE
Data mode	OBSERVING	OBSERVING
Observation mode	POINTING	POINTING
[deg] Pointing RA	278.765722	278.7463681176385
[deg] Pointing Dec	38.628815	38.60441737429983
[deg] Pointing Roll	205.339761	205.4191867118586
[s] Window start time (MET)	360201666.184000	360201666.184000
[s] Window stop time (MET)	368064066.184000	368064066.184000
[mm] SIM focus pos	-1.533336	-1.526339935833849
[mm] SIM defocus	7.710433287538843e-07	0.006996703570447904
[mm] SIM translation stage pos	250.455976	250.466033080201
[mm] SIM translation stage offset	0	-0.01005468664627074
[s] Observation start time (MET)	364722344.184000	364721968.05915
Observation start date	2009-07-23T07:44:38	2009-07-23T07:39:28
[s] Observation end time (MET)	364724344.184000	364724478.79678
Observation end date	2009-07-23T08:17:58	2009-07-23T08:21:18

Parameter	Planned	Actual
Obspar format version number	7	7
Obspar file type	PREDICTED	ACTUAL
Obspar update status	NONE	UPDATED

2.3 Aspect



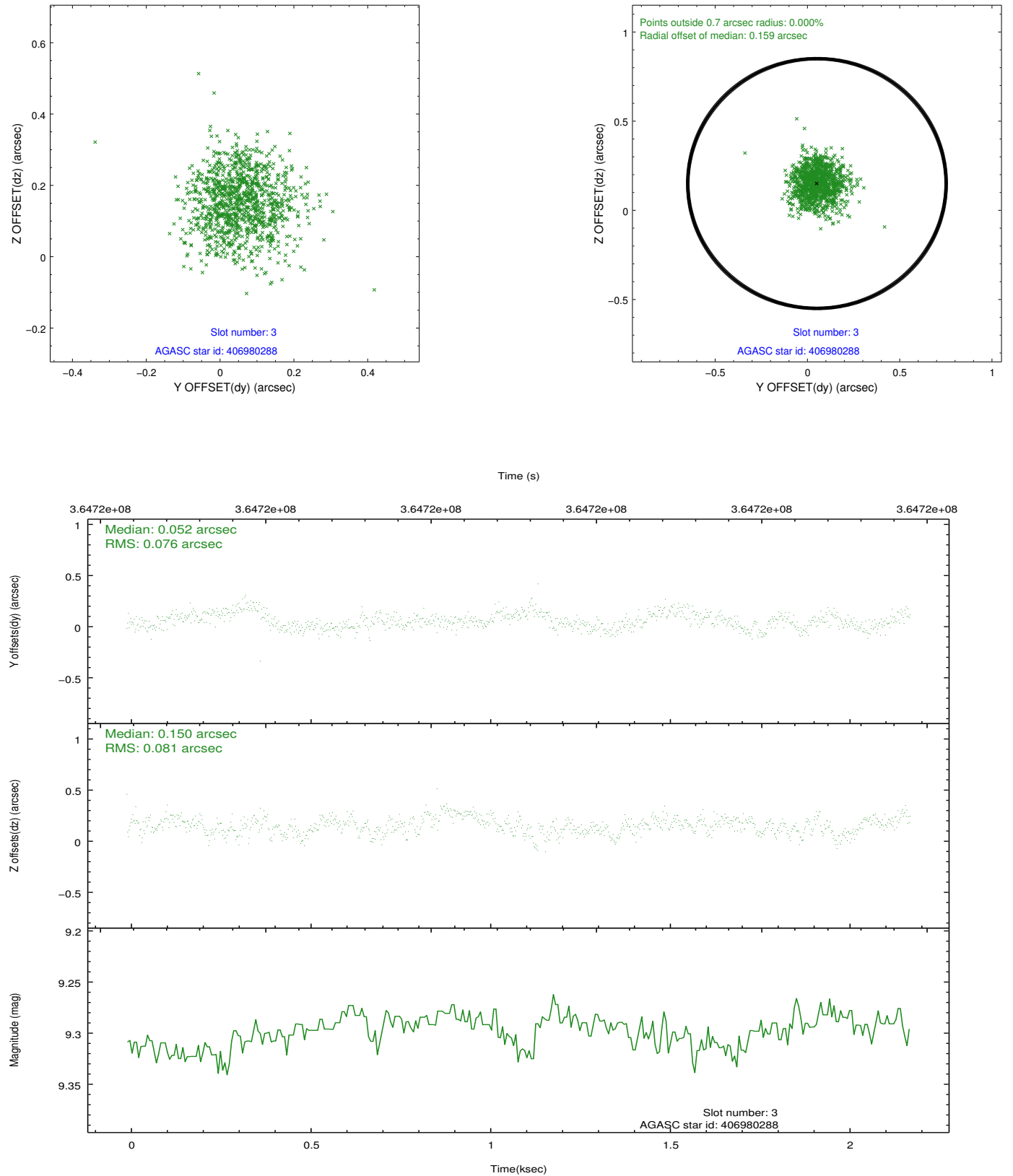


Slot Statistics

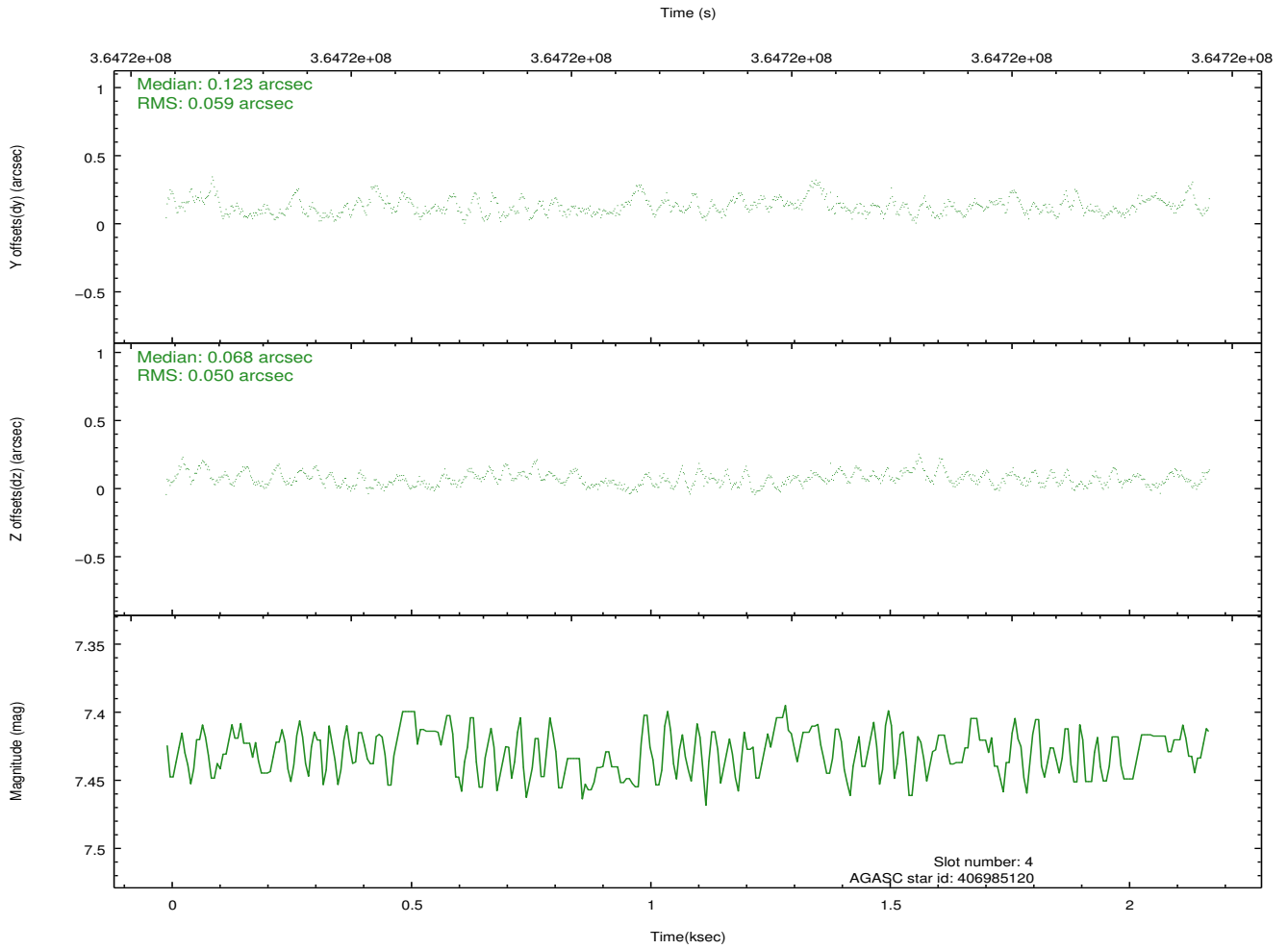
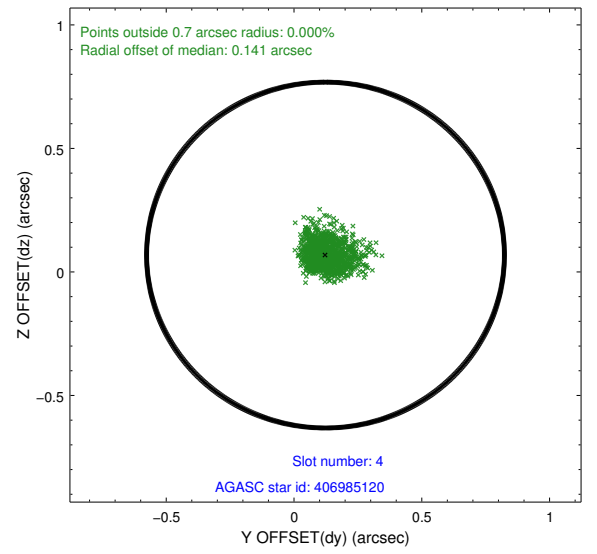
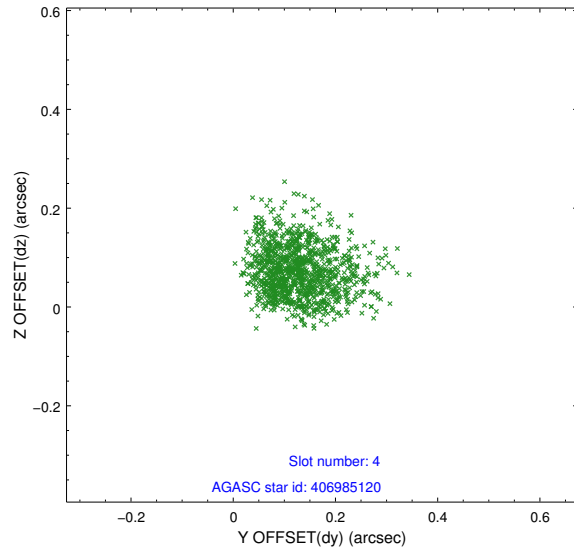
slot	status	id	mag	n_pts	med_dy	med_dz	dr1	dr2	ra	dec	mean_y	mean_z
0	FID	HRC-S-1	7.01	532	0.073	-0.227	0.007	0.012	0.000000	0.000000	-1169.16	-463.96
1	FID	HRC-S-2	6.99	532	0.217	-0.113	0.005	0.010	0.000000	0.000000	1228.45	-457.39
2	FID	HRC-S-3	7.02	532	0.100	0.037	0.007	0.013	0.000000	0.000000	-1169.53	564.96
3	GUIDE	406980288	9.30	1062	0.052	0.150	0.120	0.187	278.903147	39.061646	-1015.92	-1245.35
4	GUIDE	406985120	7.43	1064	0.123	0.068	0.081	0.136	278.839732	38.894839	-597.68	-777.78
5	GUIDE	406987272	6.91	1064	-0.107	-0.183	0.066	0.104	278.536588	38.437504	878.01	344.19
6	GUIDE	406989616	8.23	1064	0.033	0.064	0.079	0.131	279.202881	38.520843	-946.69	876.15
7	GUIDE	406993992	7.63	1063	-0.111	-0.108	0.074	0.118	279.053714	38.034587	175.58	2283.16

2.4 Star Slots

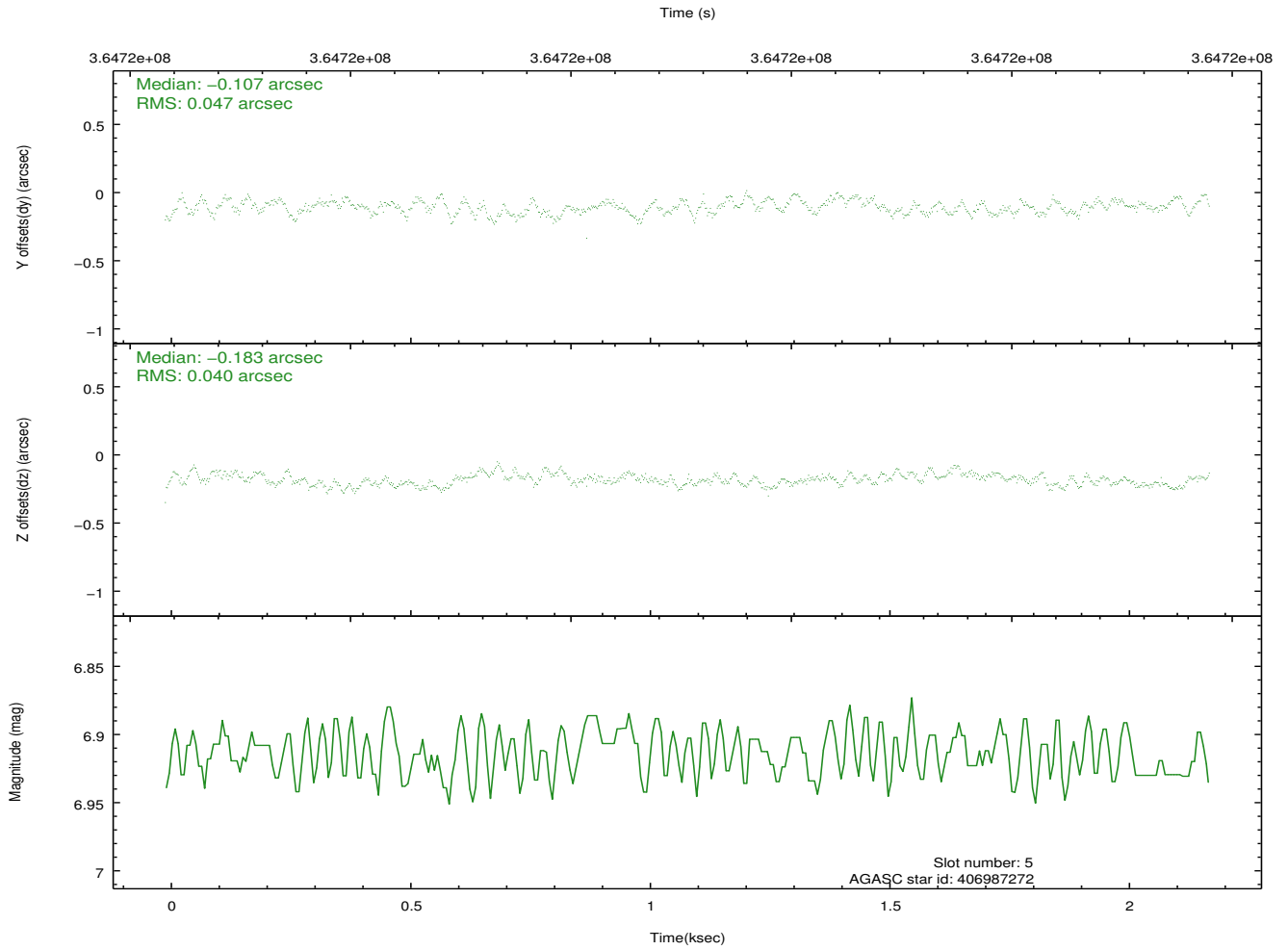
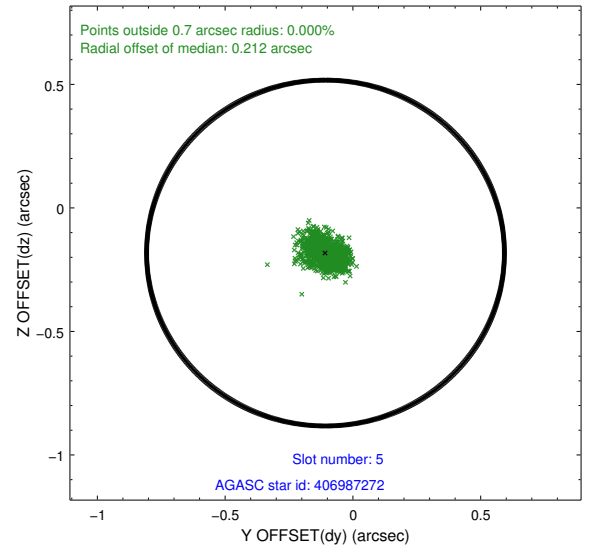
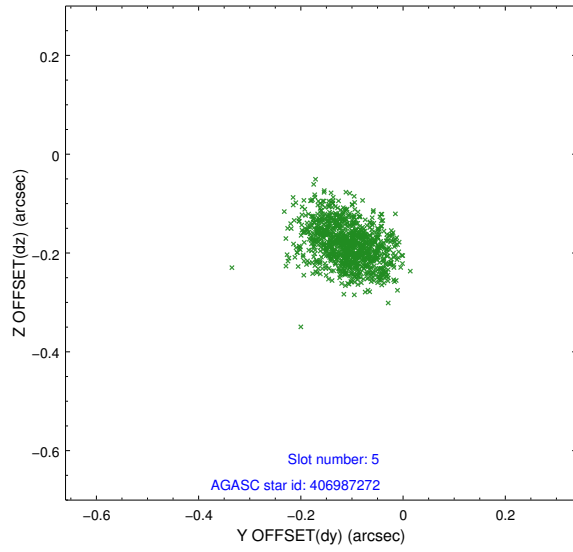
2.4.1 Slot 3



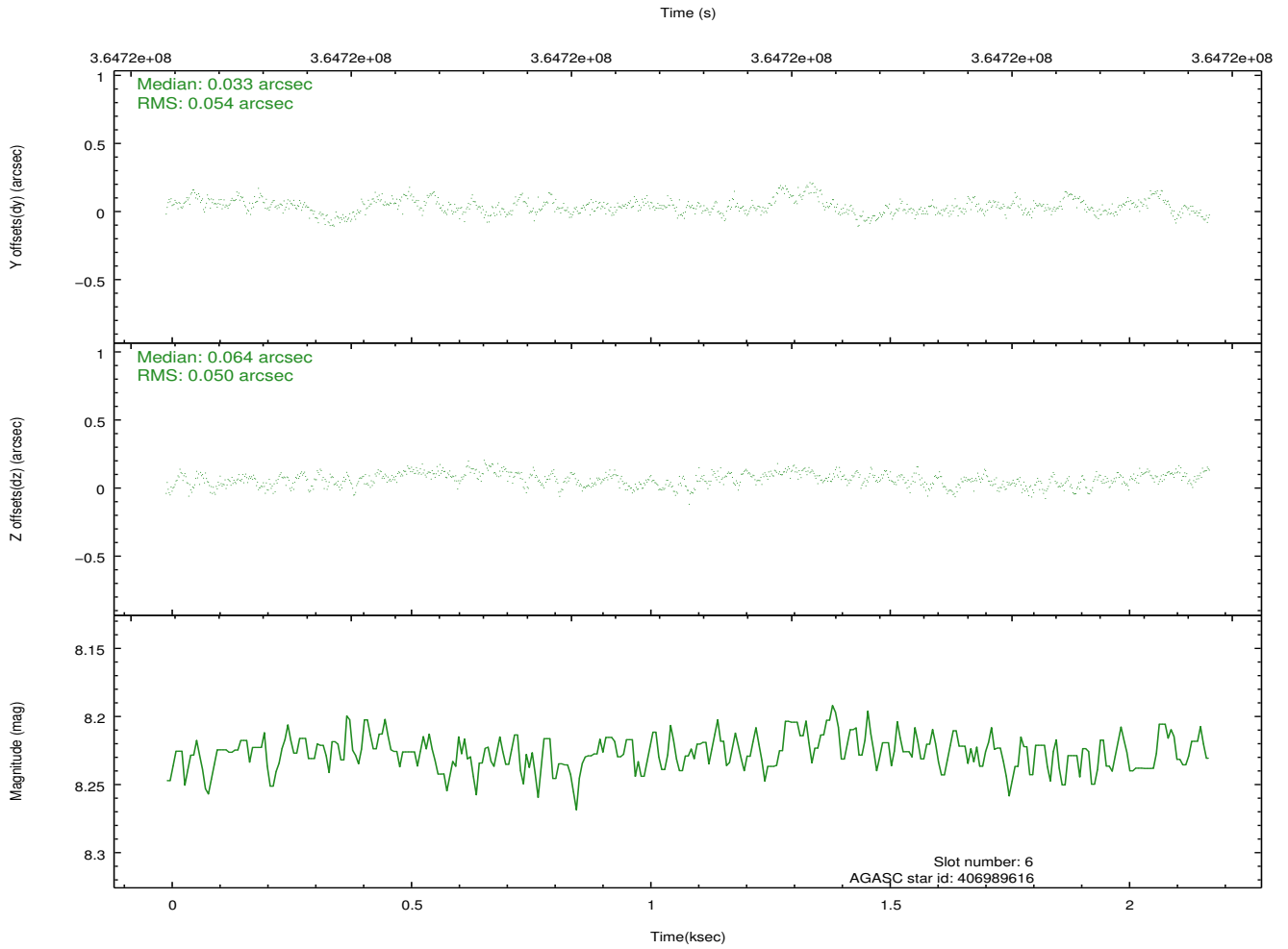
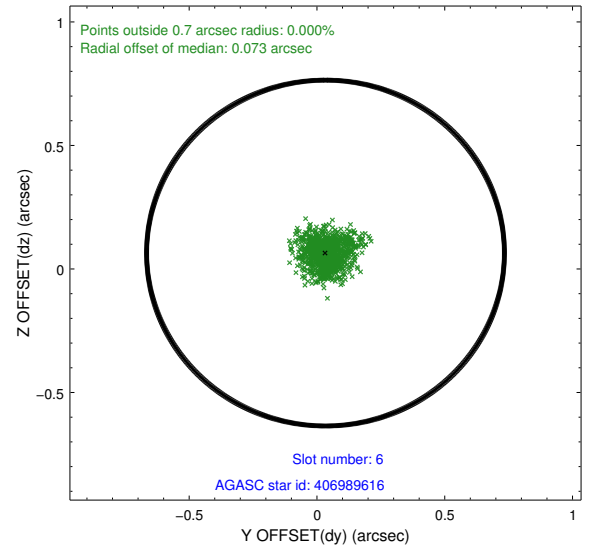
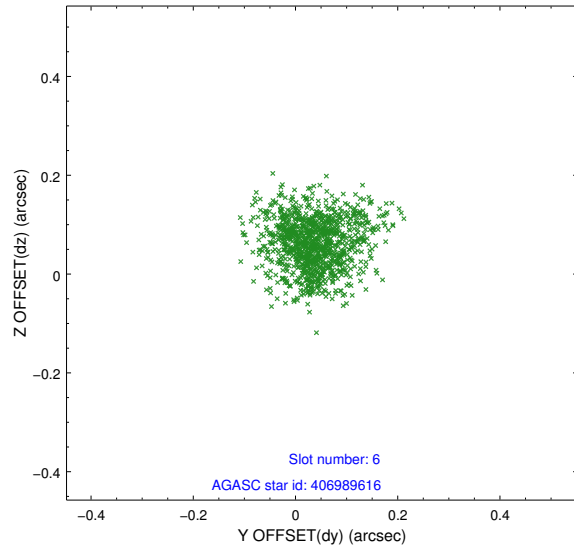
2.4.2 Slot 4



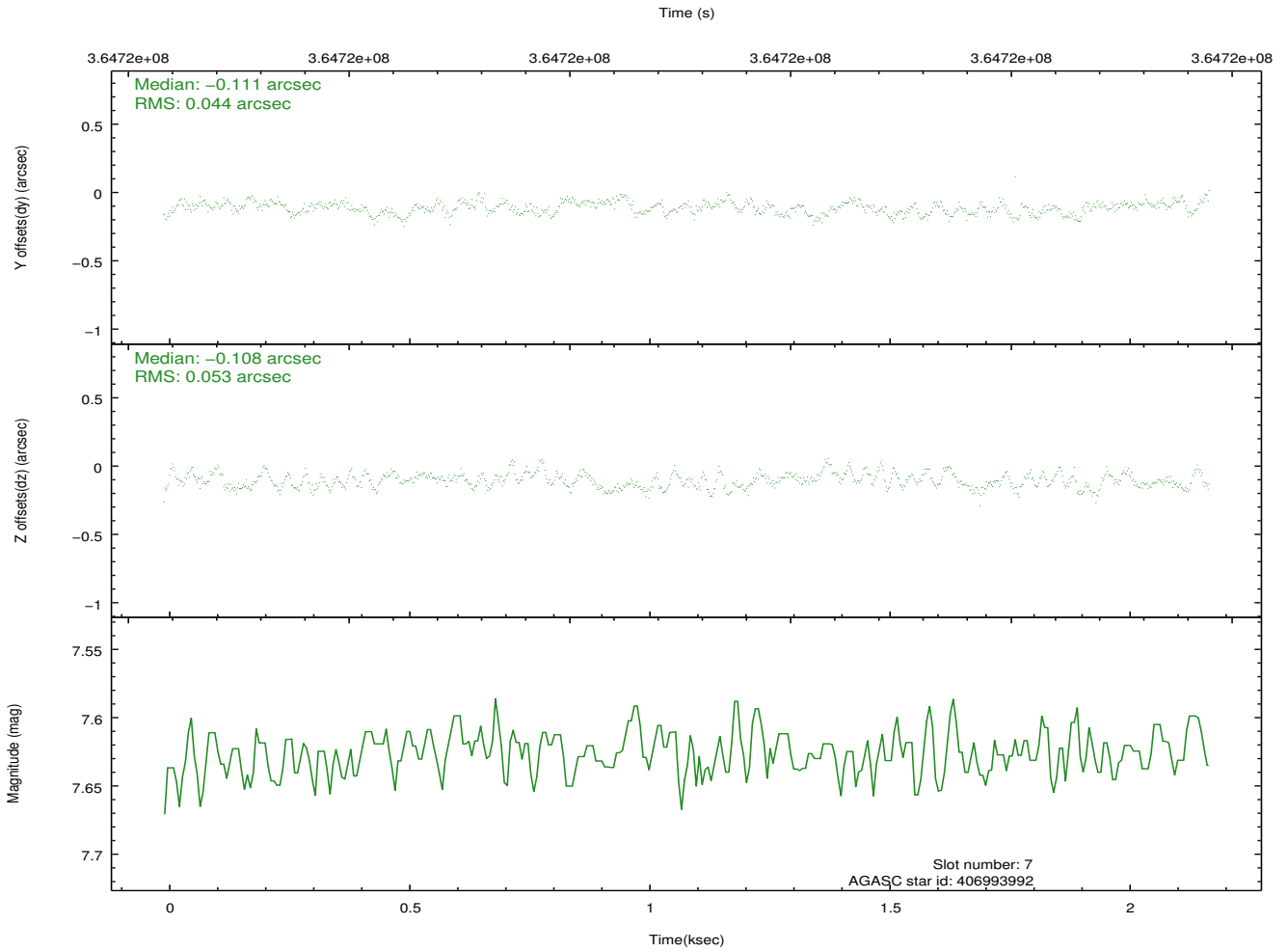
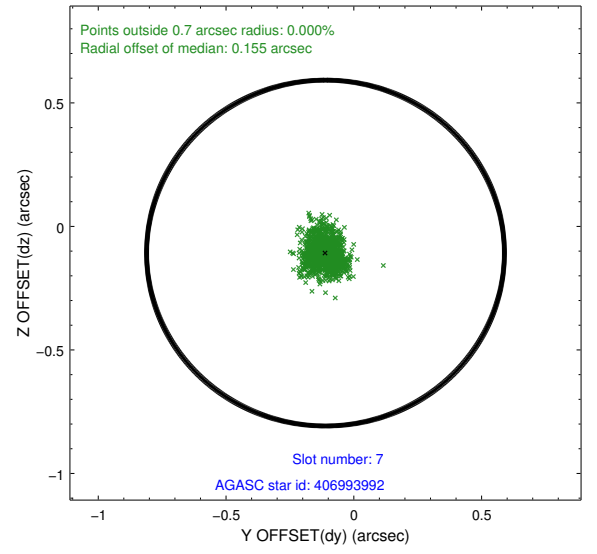
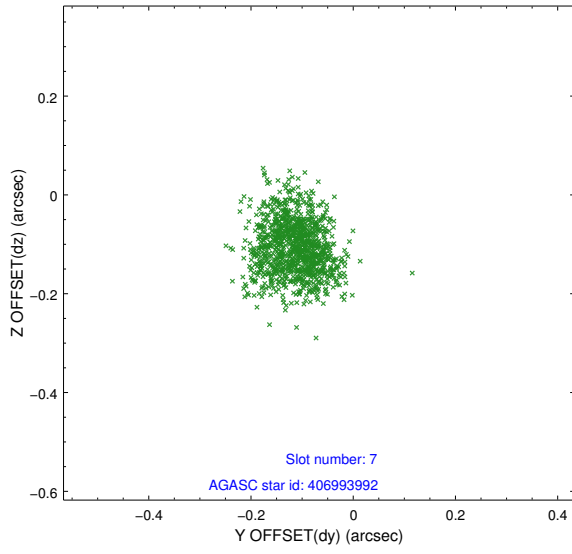
2.4.3 Slot 5



2.4.4 Slot 6

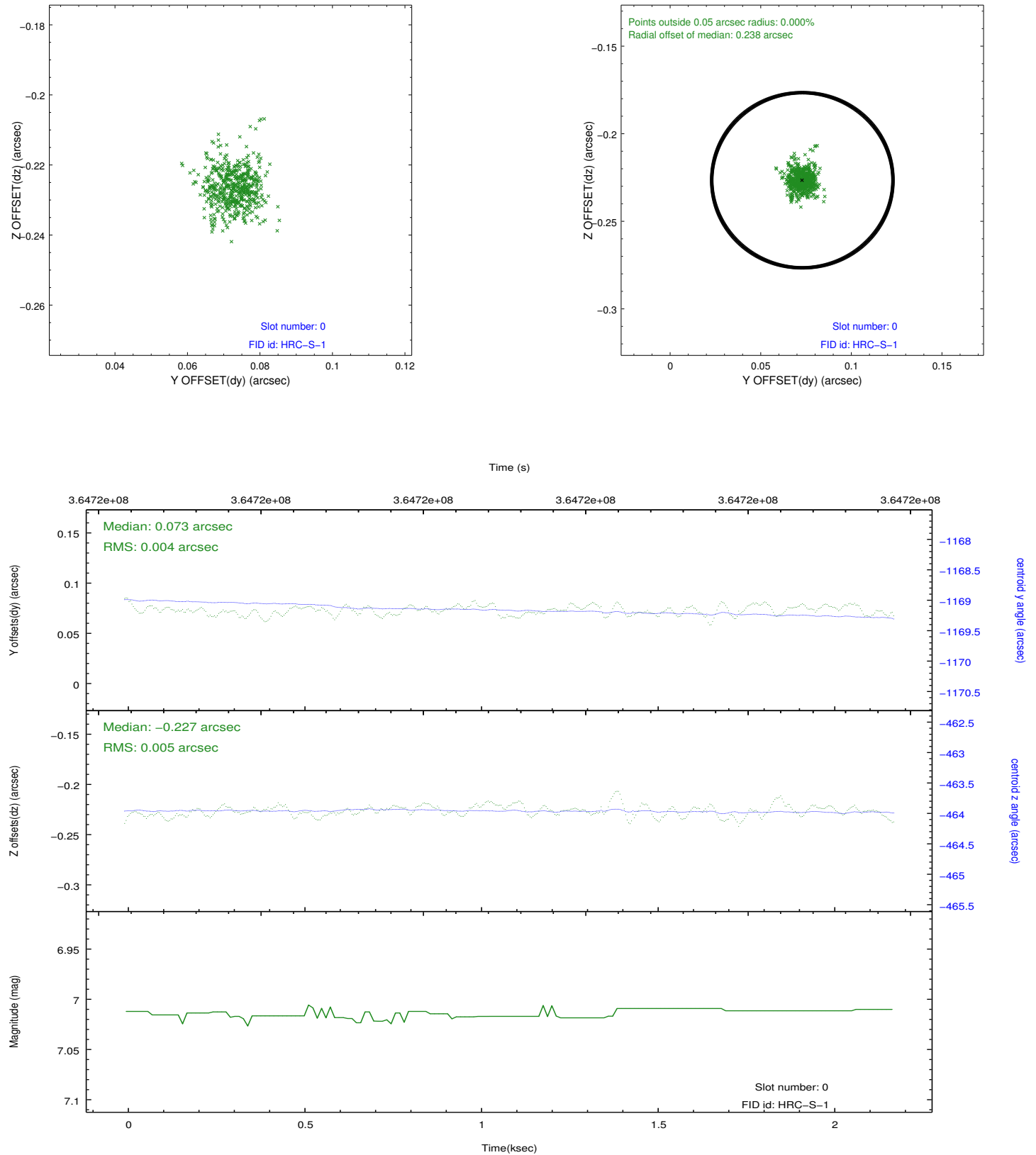


2.4.5 Slot 7

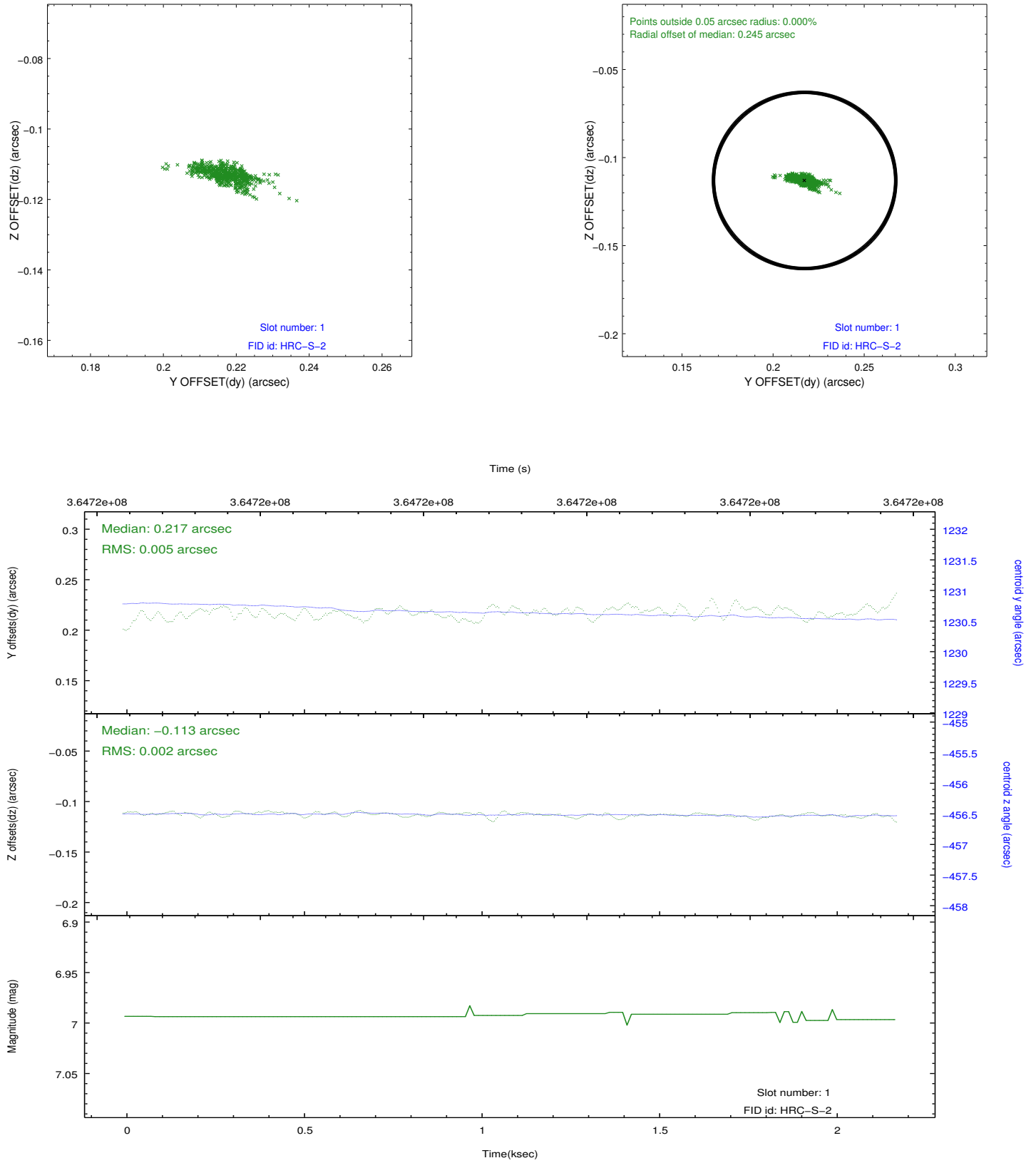


2.5 FID Slots

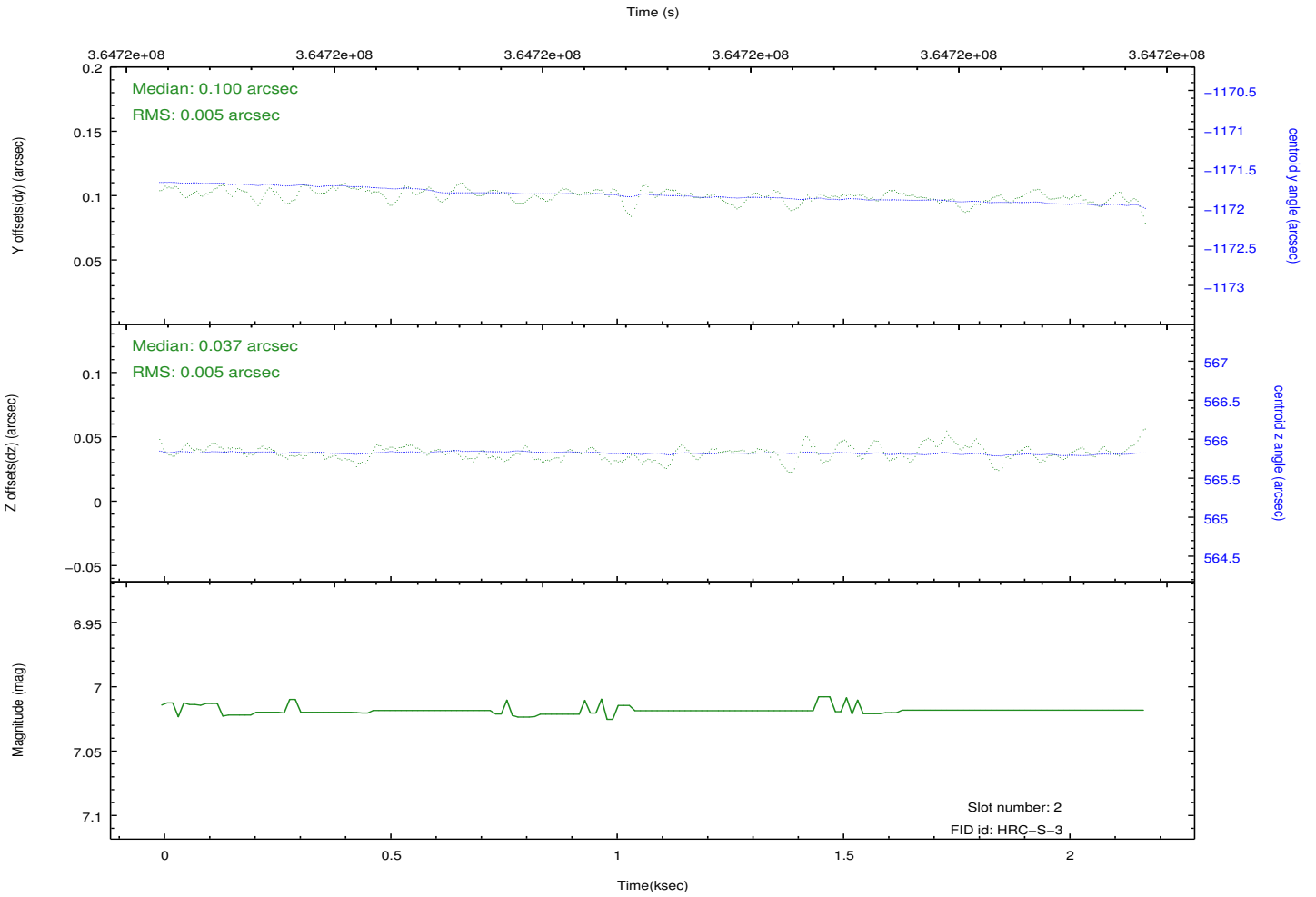
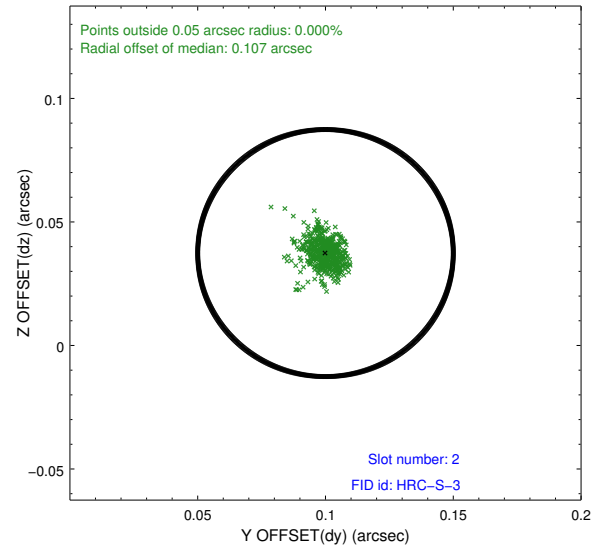
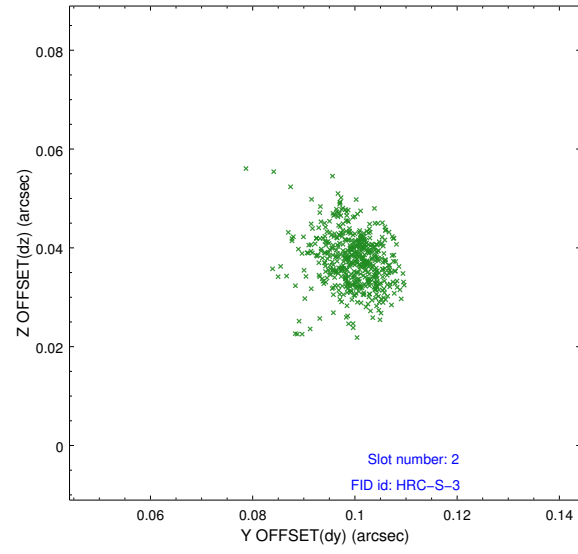
2.5.1 Slot 0



2.5.2 Slot 1



2.5.3 Slot 2



A Summary

A.1 Status

V&V Scientist	Beth Sundheim
V&V Date (YYYY-MM-DD)	2012.08.20
V&V Edition	1
V&V Disposition and Status	OK
V&V Charge Time	2.1783813589215

A.2 Comments

Window preference met.