

V&V Reference Report

L2 ASCDS Version : 8.4.4

Observation 9707 - L2 Version 3
Chandra X-Ray Center

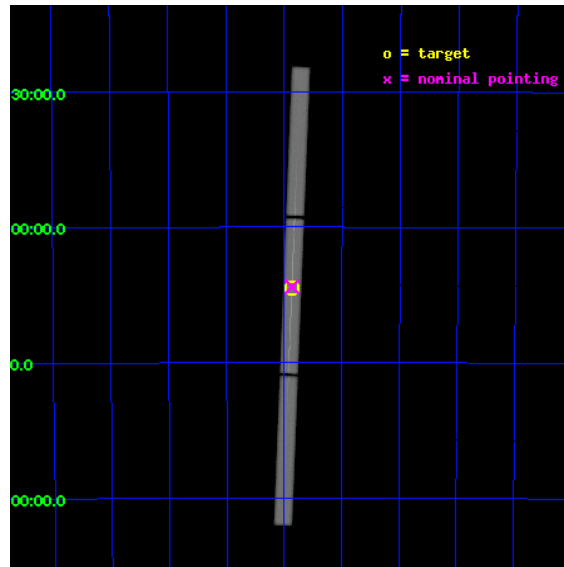
L2 Processing Date : Aug 12 2012

Contents

1	Front	2
2	OBI	3
2.1	OBI	3
2.1.1	Images	3
2.1.2	Parameters	4
2.1.3	Events	4
2.2	Compared Parameters	5
2.3	Aspect	6
2.4	Star Slots	9
2.4.1	Slot 3	9
2.4.2	Slot 4	10
2.4.3	Slot 5	11
2.4.4	Slot 6	12
2.4.5	Slot 7	13
2.5	FID Slots	14
2.5.1	Slot 0	14
2.5.2	Slot 1	15
2.5.3	Slot 2	16
3	Gratings	17
3.1	LETG Arm	17
A	Summary	19
A.1	Status	19
A.2	Comments	19

1 Front

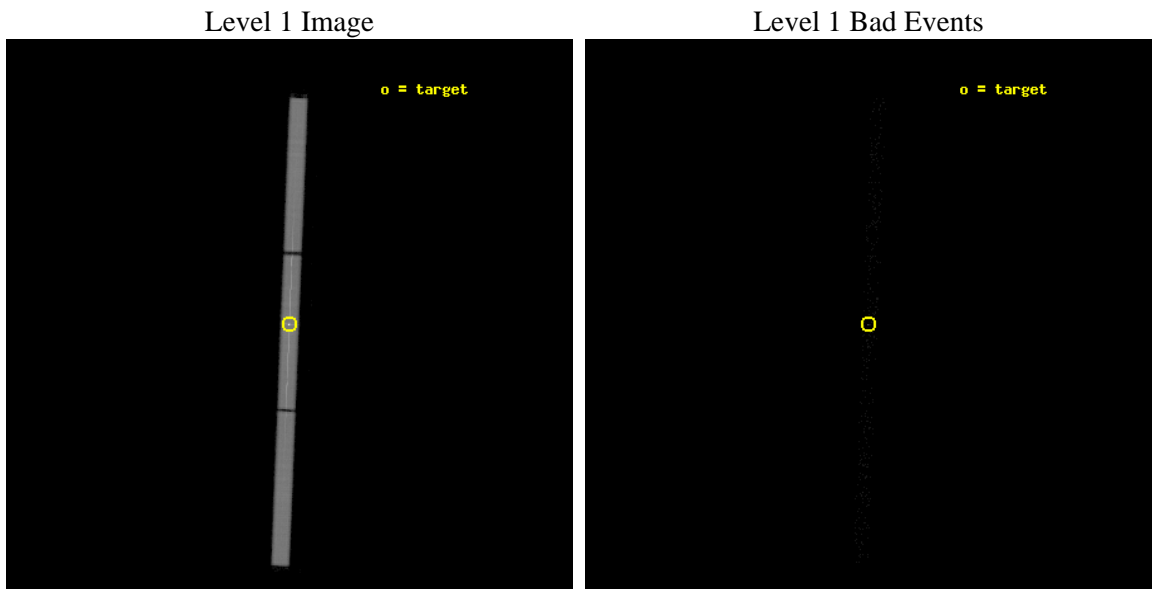
seq_num	790184	Sequence number
obs_id	9707	Observation id
title	AO9 Calibration Observations of PKS2155-304	Proposal title
observer	Dr. CXC Calibration	Principal investigator
object	PKS2155-304	Source name
ra_targ	329.716667	Observer's specified target RA [deg]
dec_targ	-30.225556	Observer's specified target Dec [deg]
ra_nom	329.71641638298	Nominal RA [deg]
dec_nom	-30.220731017862	Nominal Dec [deg]
roll_nom	92.202951640982	Nominal Roll [deg]
revision	3	Processing version of data
ontime	10183.631748438	[s]
livetime	10077.697990547	Ontime multiplied by DTCOR
l2events	923959	Number of level 2 events



2 OBI

2.1 OBI

2.1.1 Images



2.1.2 Parameters

obi_num	0	Obi number	sched_exp_time	10000.000000	[s] Scheduled observation exposure time
ascdsver	8.4.5	Processing system revision	ontime	10183.631748438	[s]
caldsver	4.5.1.1	 	l1events	1198246	Number of level 1 events
date	2012-08-12T14:47:03	Date and time of file creation			
revision	3	Processing version of data			

2.1.3 Events

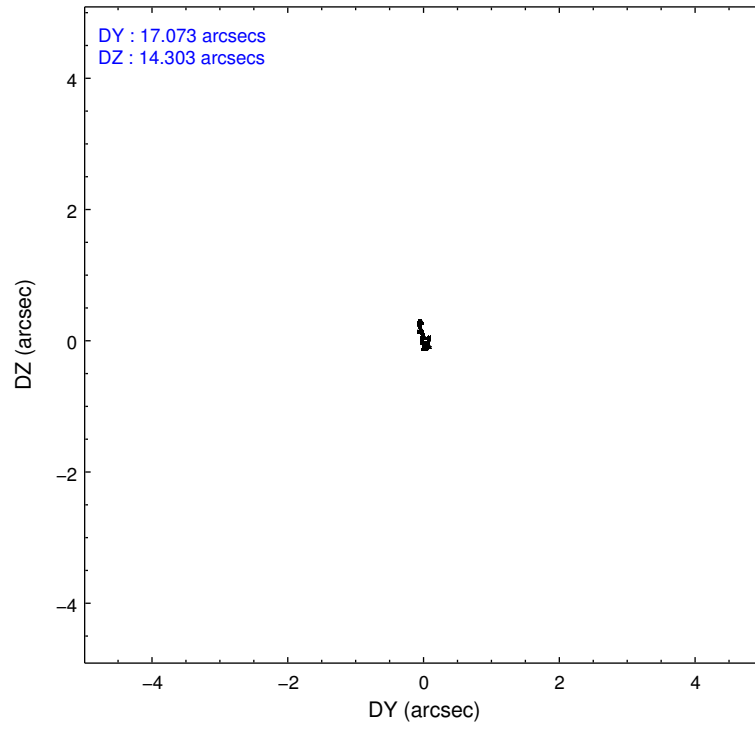
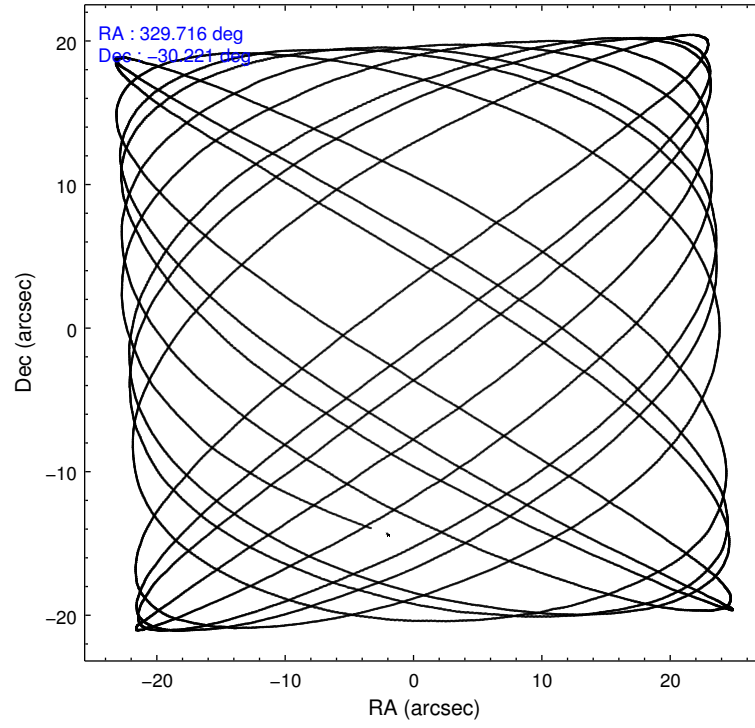
Level 1 Events

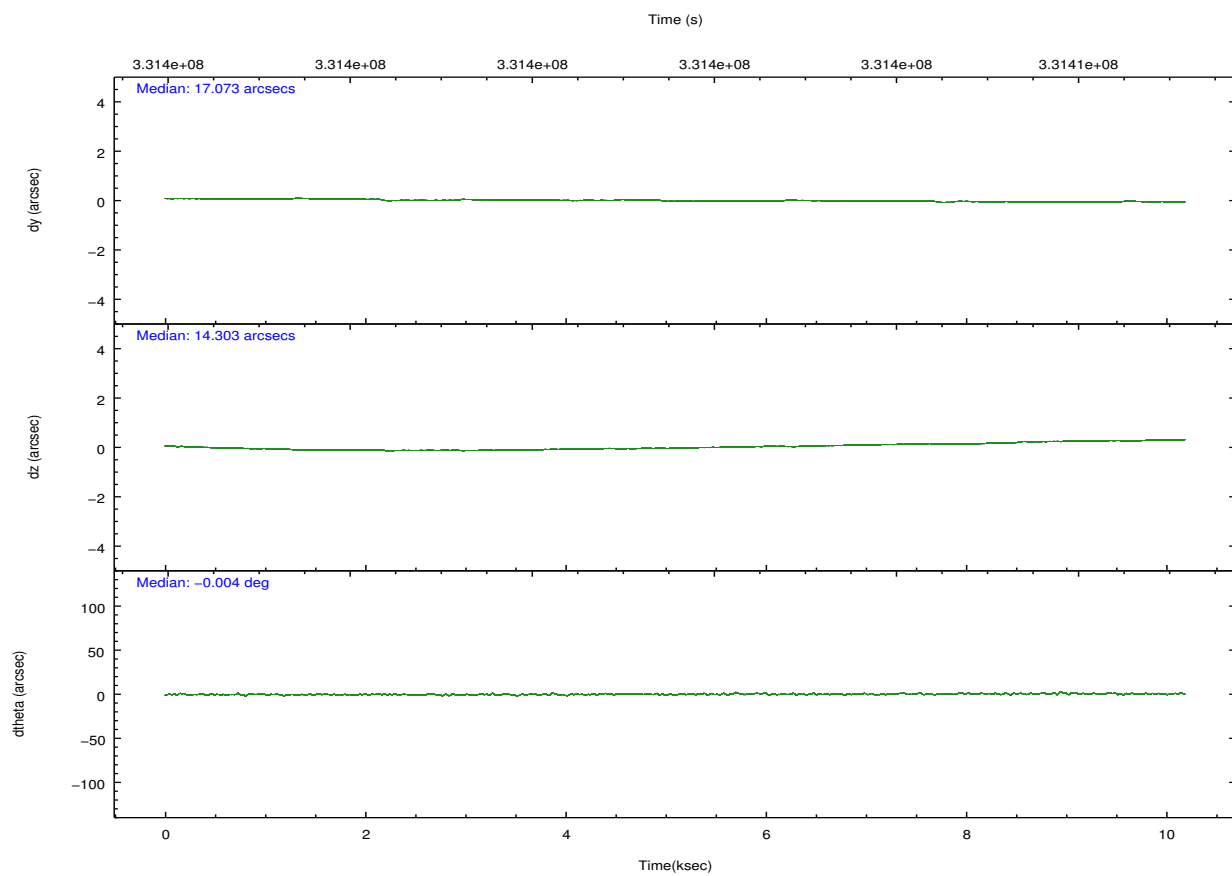
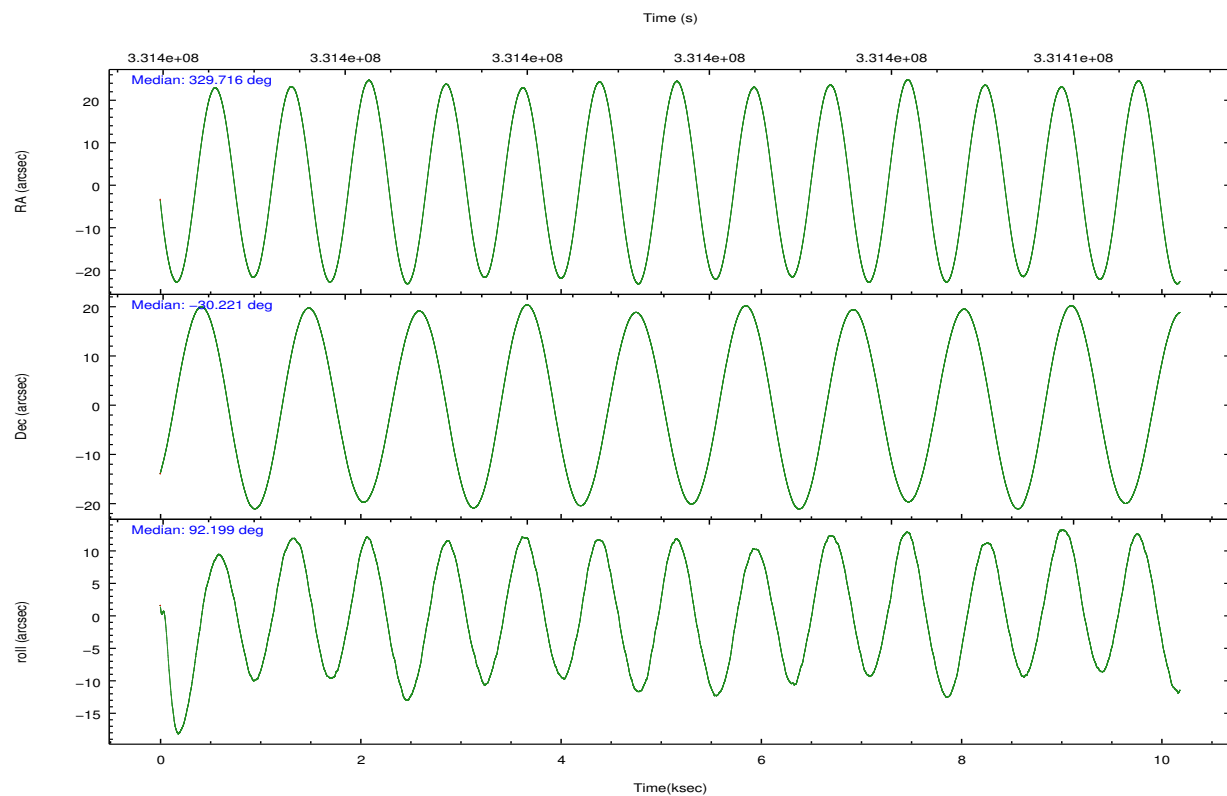
	segment 1	segment 2	segment 3
level 1 events	373913	445462	378871
rejected events	4812	5967	5015
rejected %	1%	1%	1%

2.2 Compared Parameters

Parameter	Planned	Actual	Parameter	Planned	Actual
Instrument	HRC	HRC	Obspar format version number	7	7
Detector	HRC-S	HRC-S	Obspar file type	PREDICTED	ACTUAL
Grating	LETG	LETG	Obspar update status	NONE	UPDATED
Data mode	OBSERVING	OBSERVING			
Observation mode	POINTING	POINTING			
[deg] Pointing RA	329.735625	329.716416382975			
[deg] Pointing Dec	-30.244284	-30.22073101786162			
[deg] Pointing Roll	92.145285	92.20295164098221			
[mm] SIM focus pos	-1.429586	-1.428180813131781			
[mm] SIM defocus	0.1037507710433287	0.1051558262725154			
[mm] SIM translation stage pos	250.455976	250.466033080201			
[mm] SIM translation stage offset	0	-0.01005468664627074			
[s] Observation start time (MET)	331396660.184000	331396194.93736			
Observation start date	2008-07-02T14:36:35	2008-07-02T14:29:54			
[s] Observation end time (MET)	331406660.184000	331406922.58789			
Observation end date	2008-07-02T17:23:15	2008-07-02T17:28:42			

2.3 Aspect



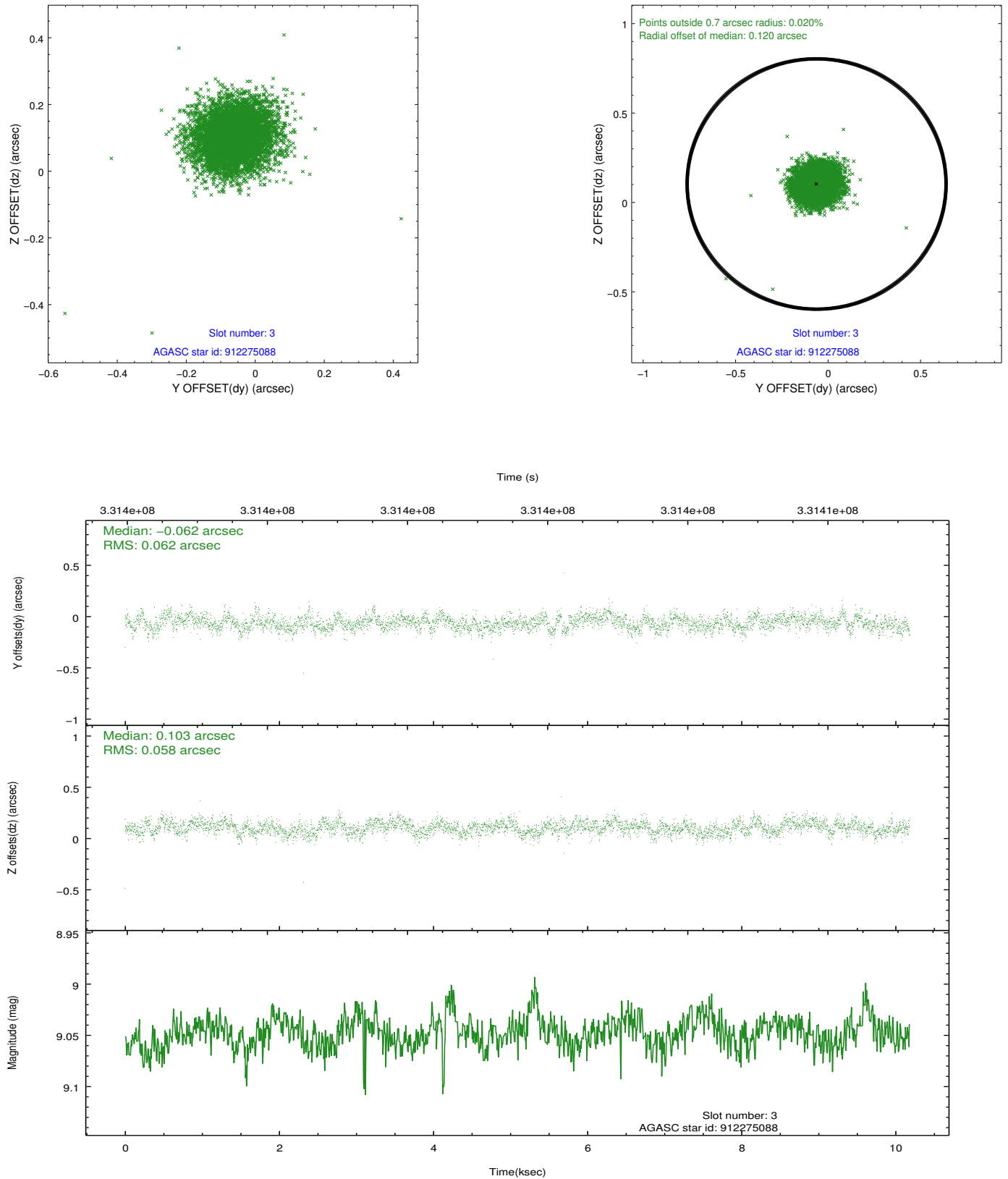


Slot Statistics

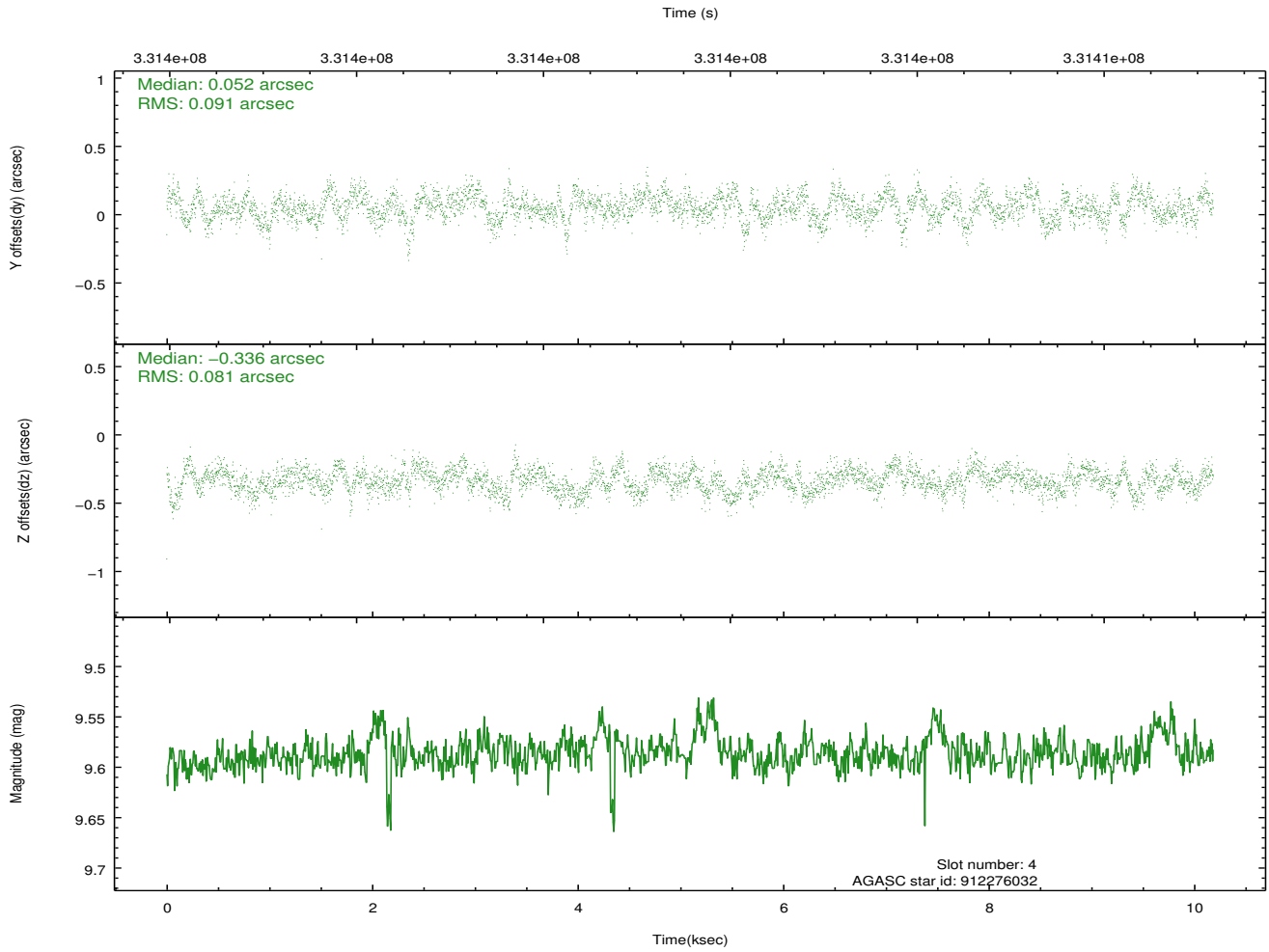
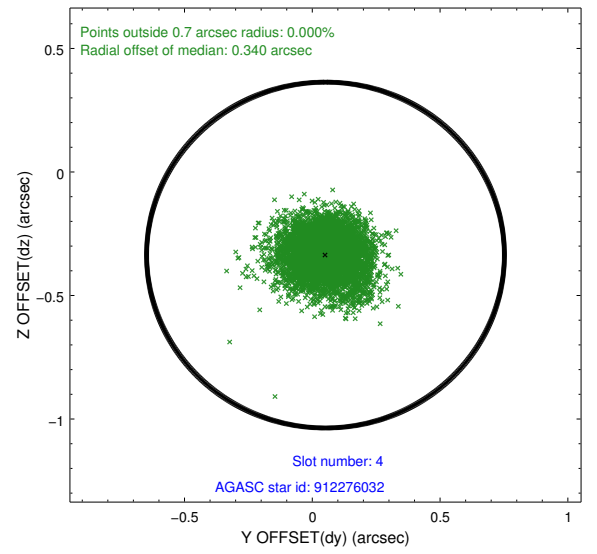
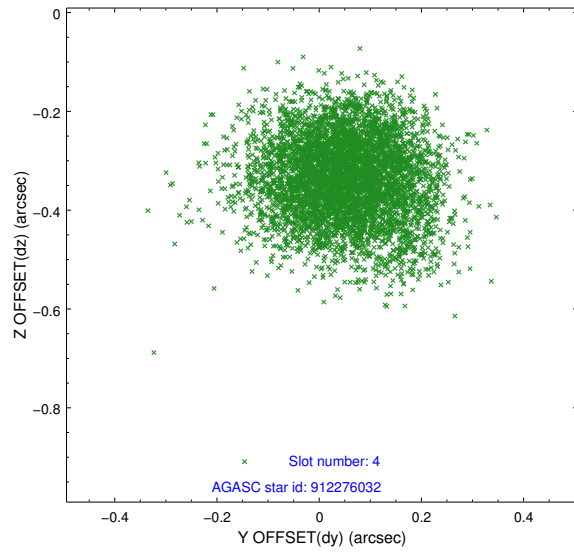
slot	status	id	mag	n_pts	med_dy	med_dz	dr1	dr2	ra	dec	mean_y	mean_z
0	FID	HRC-S-1	7.01	2485	0.077	-0.195	0.008	0.012	0.000000	0.000000	-1171.54	-463.22
1	FID	HRC-S-2	6.98	2484	0.230	-0.120	0.005	0.010	0.000000	0.000000	1227.82	-455.96
2	FID	HRC-S-3	7.02	2485	0.083	0.013	0.008	0.013	0.000000	0.000000	-1173.77	566.33
3	GUIDE	912275088	9.05	4964	-0.062	0.103	0.090	0.144	329.619228	-29.738698	1832.04	295.40
4	GUIDE	912276032	9.59	4958	0.052	-0.336	0.130	0.210	329.395967	-29.803466	1624.17	1000.50
5	GUIDE	981469488	9.58	4964	-0.108	0.165	0.151	0.245	329.261199	-30.045155	768.60	1450.82
6	GUIDE	981478152	9.39	4883	0.075	0.190	0.115	0.181	329.415589	-30.057192	709.20	971.73
7	GUIDE	981471664	6.35	4968	0.049	-0.122	0.091	0.140	328.981826	-30.605916	-1221.65	2382.29

2.4 Star Slots

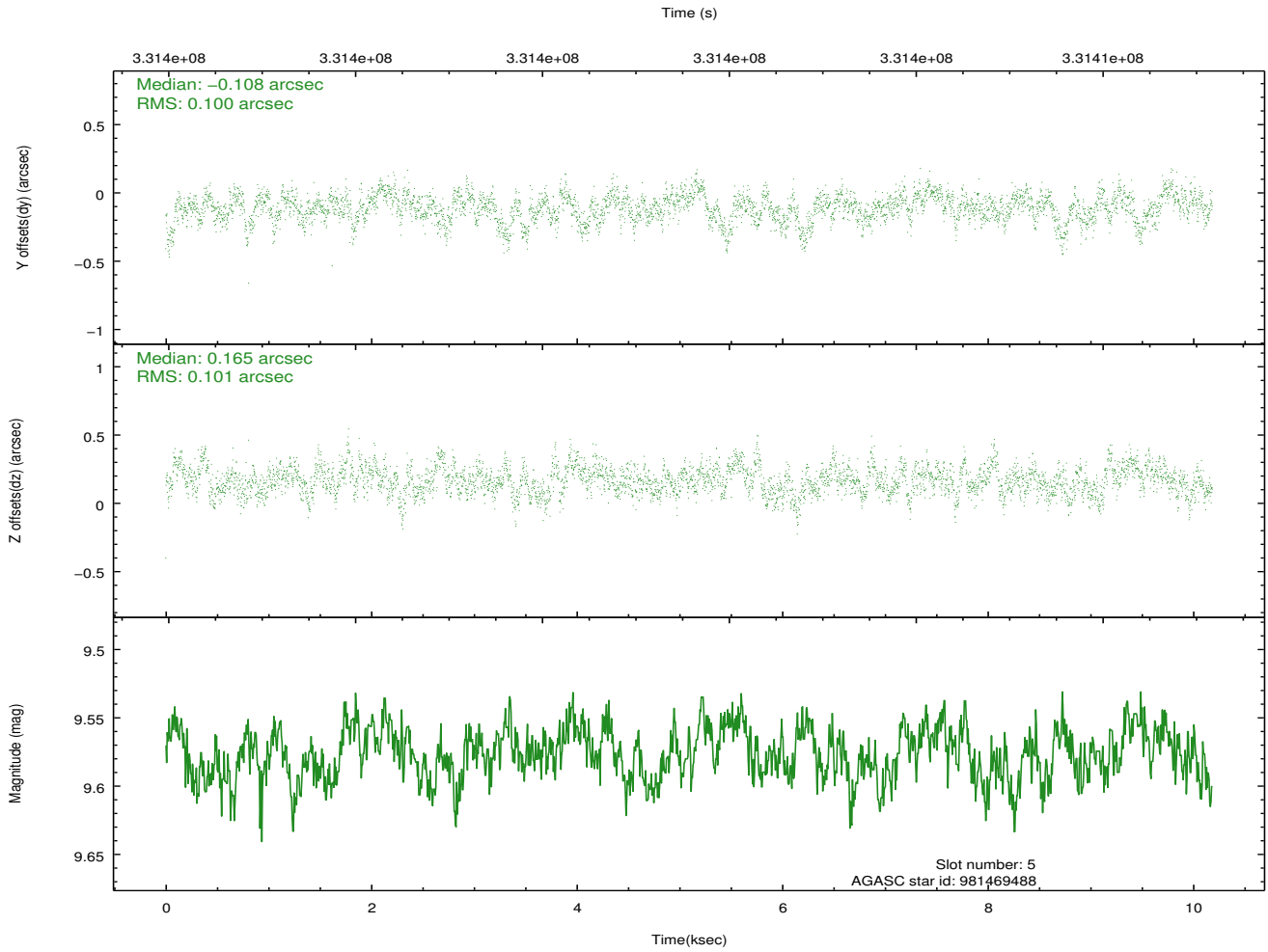
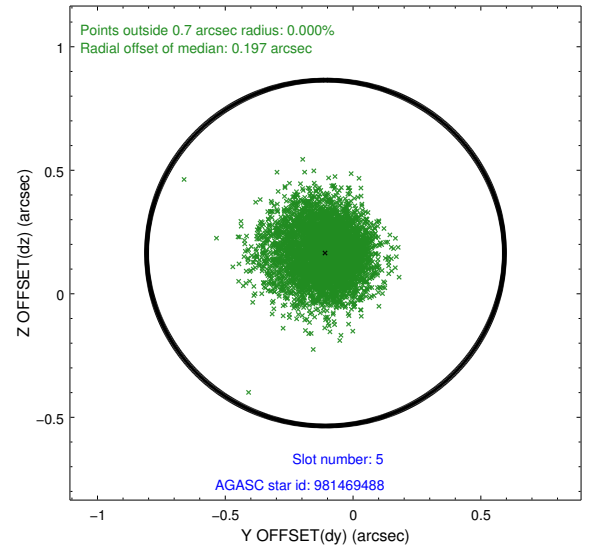
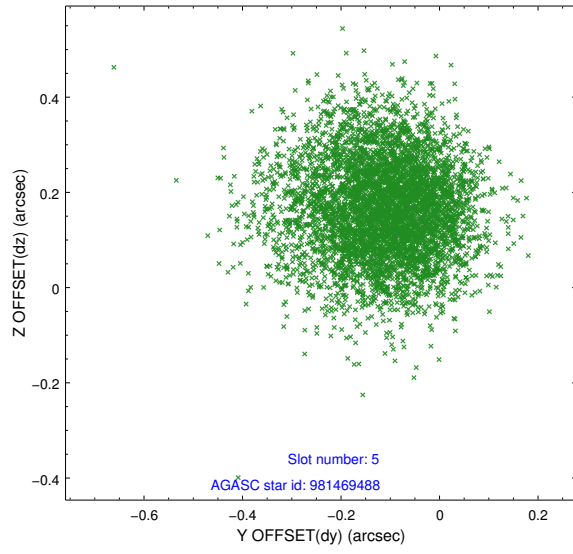
2.4.1 Slot 3



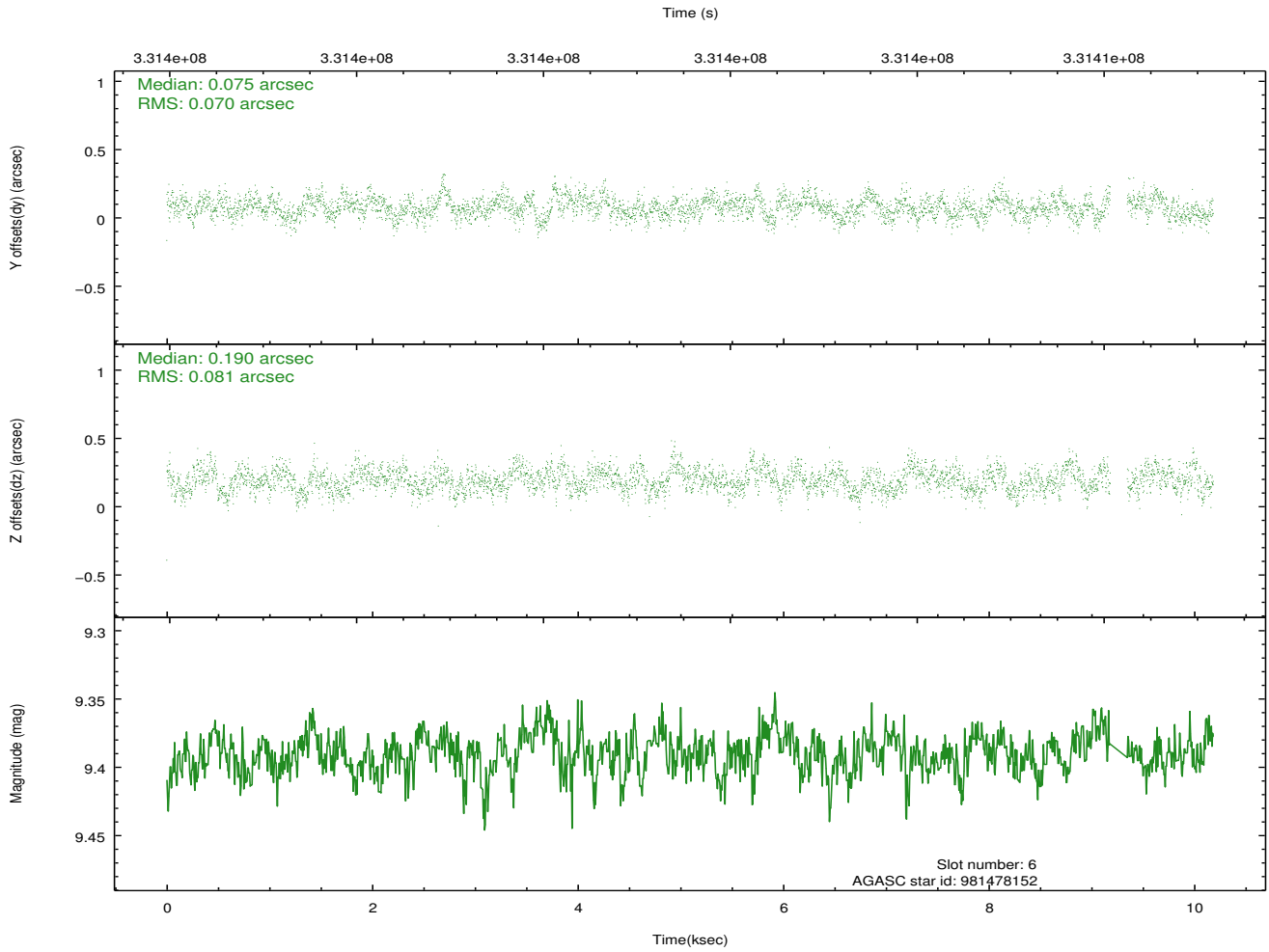
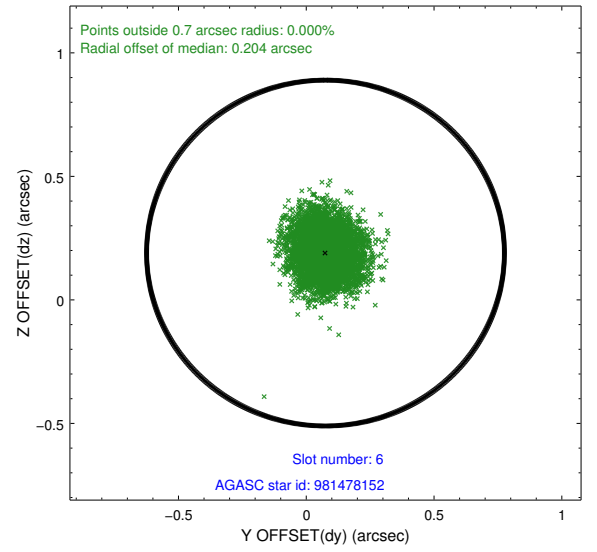
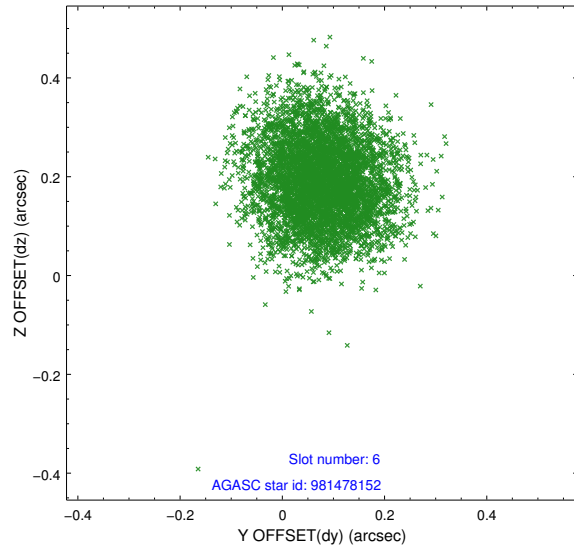
2.4.2 Slot 4



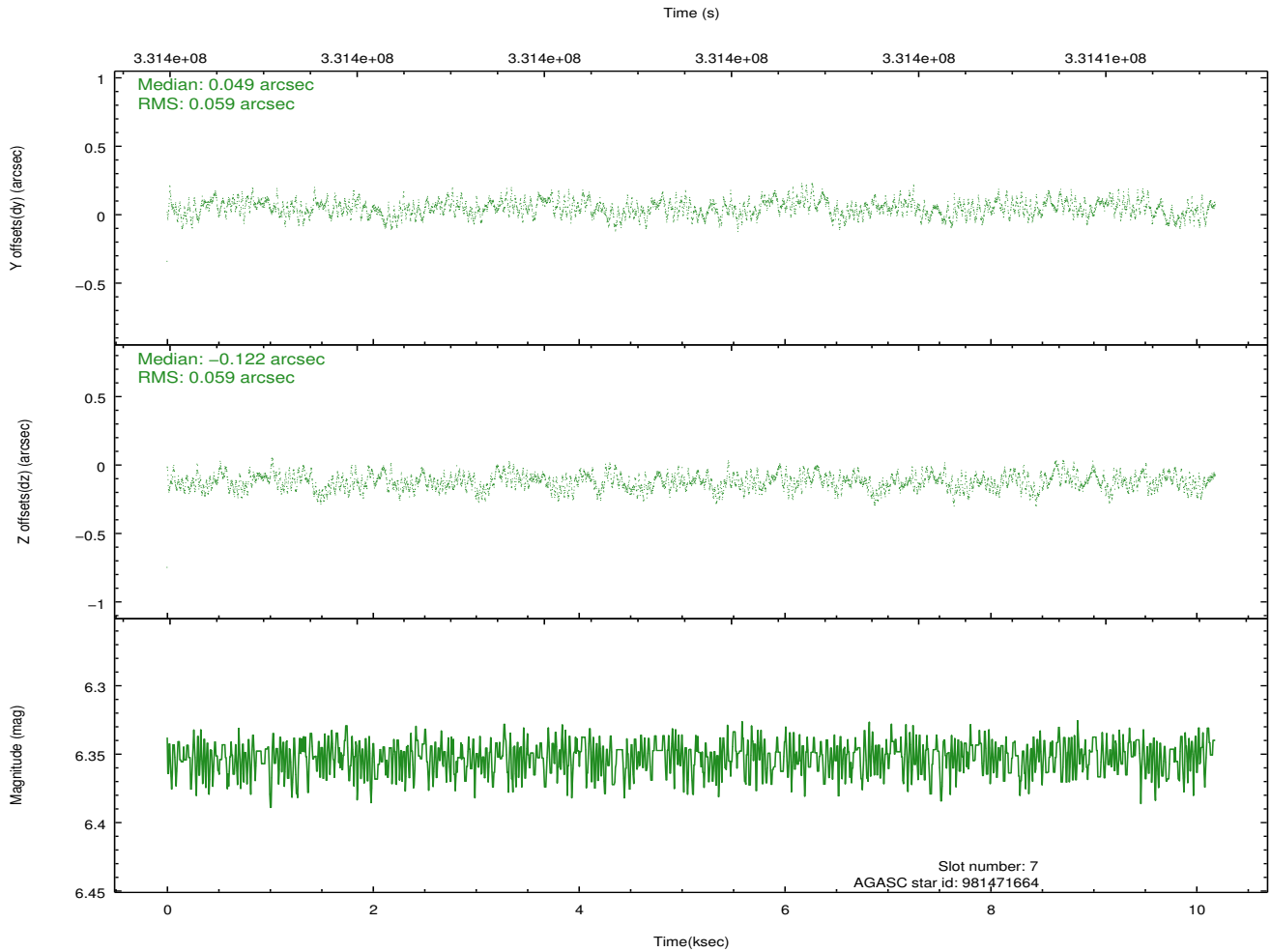
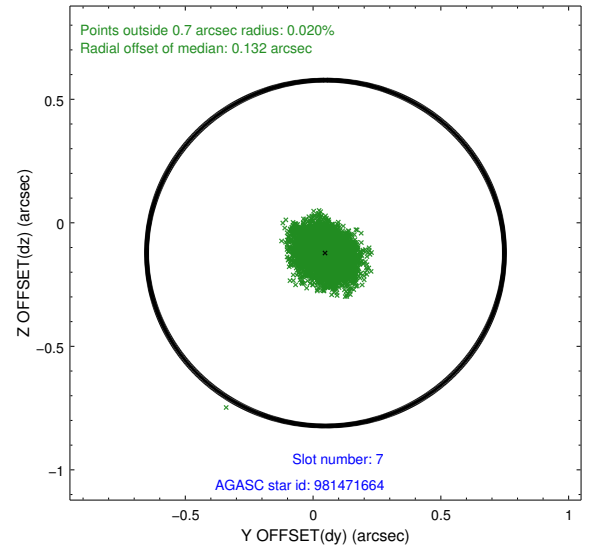
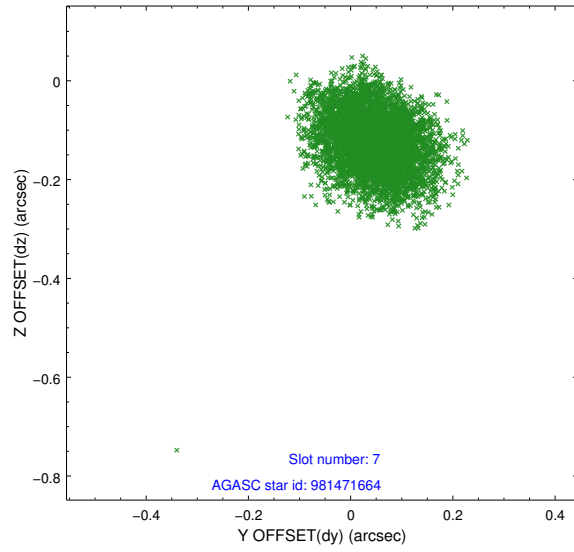
2.4.3 Slot 5



2.4.4 Slot 6

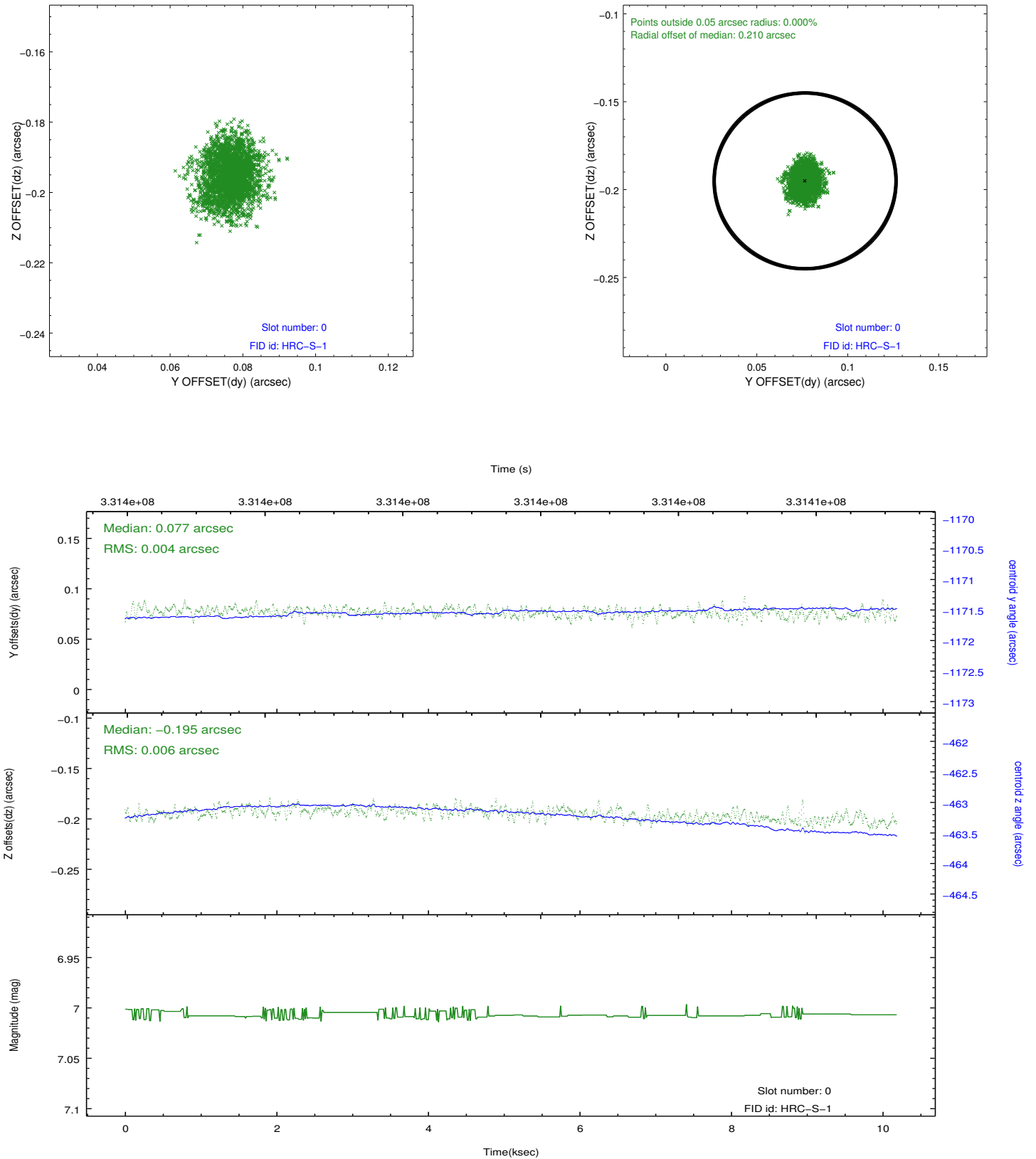


2.4.5 Slot 7

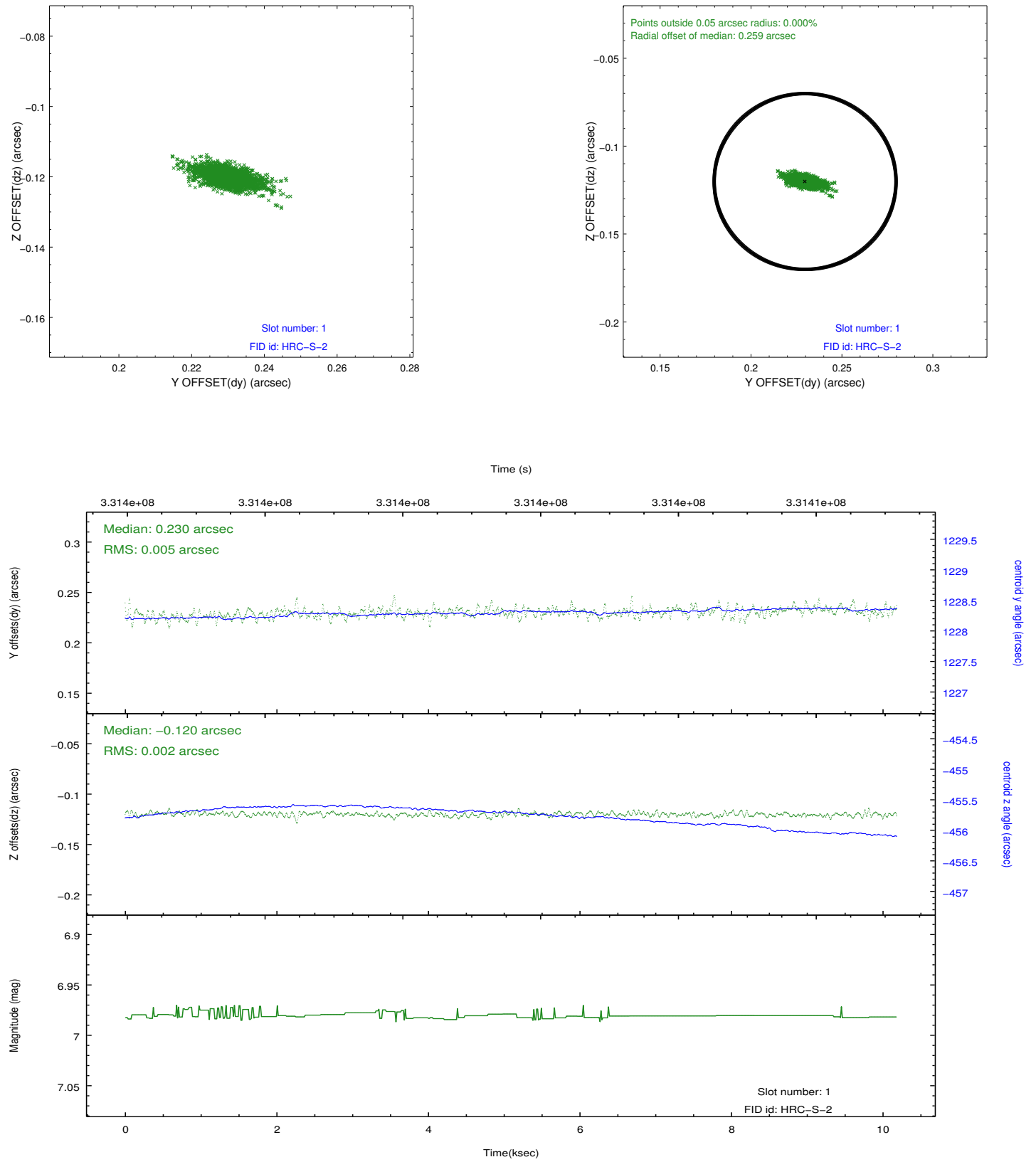


2.5 FID Slots

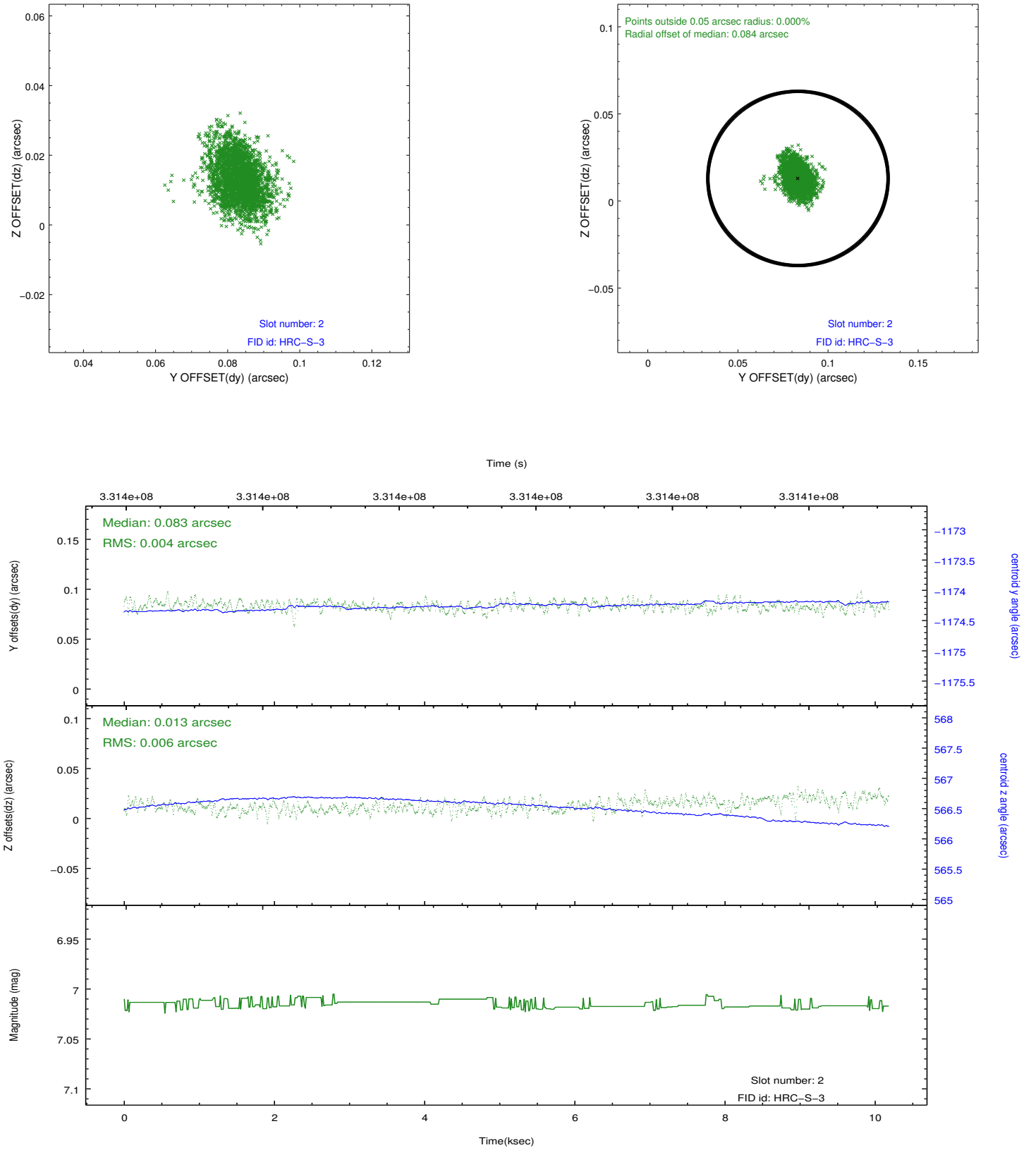
2.5.1 Slot 0



2.5.2 Slot 1

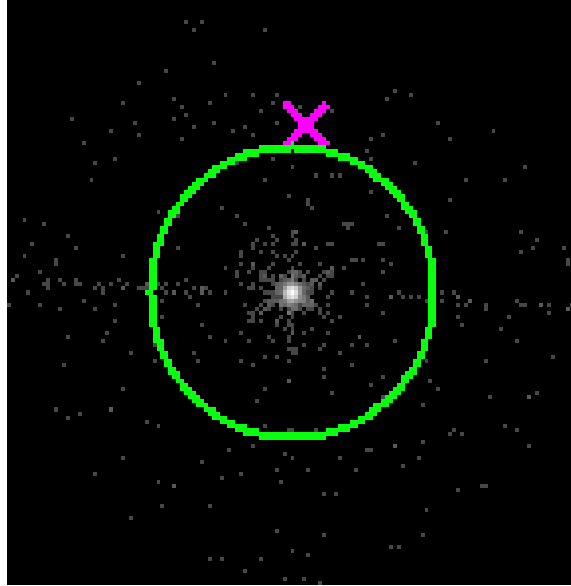


2.5.3 Slot 2

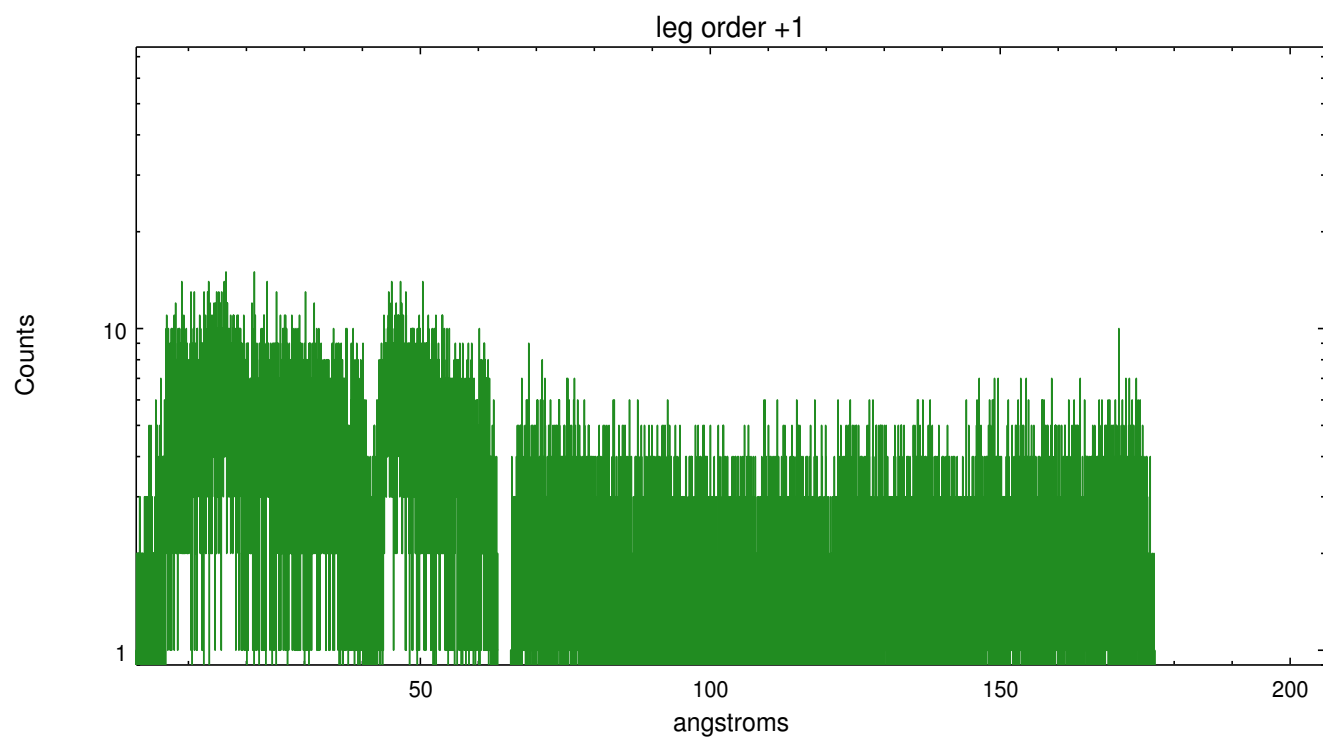
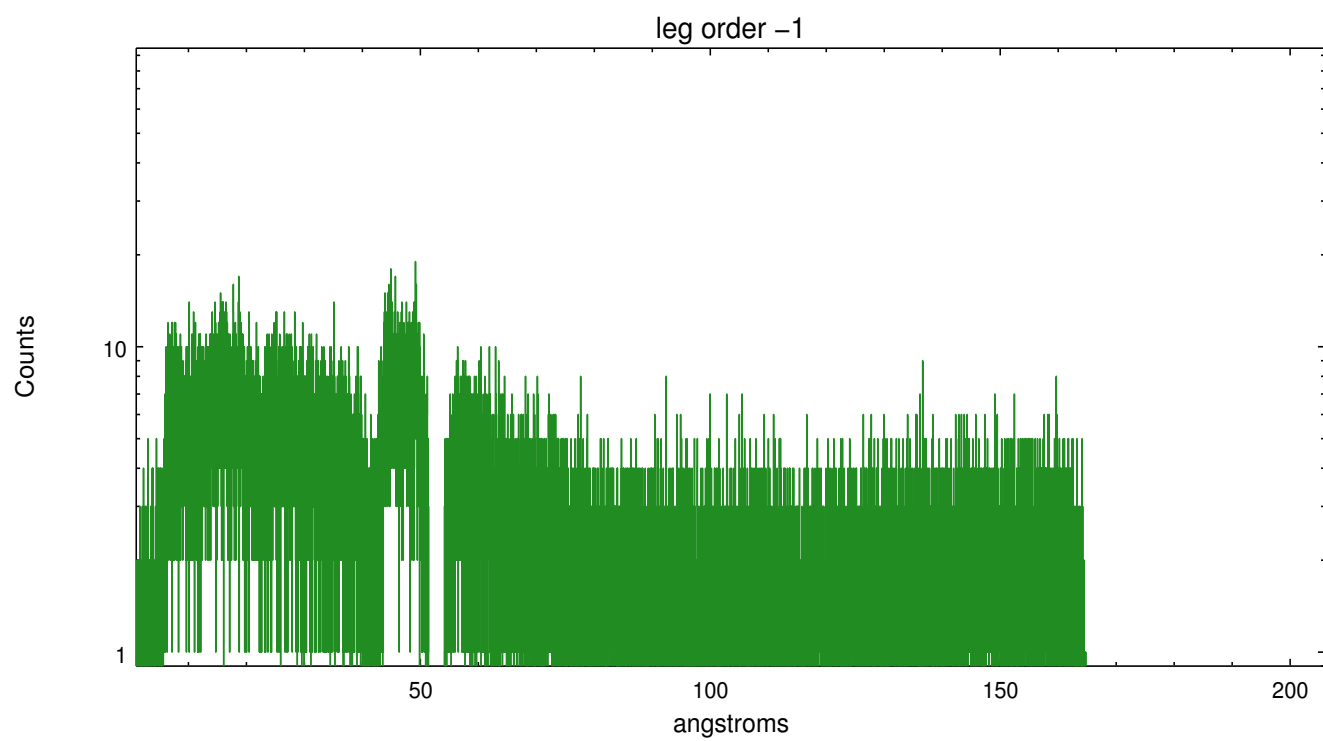


3 Gratings

3.1 LETG Arm



LETG Zero Order



A Summary

A.1 Status

V&V Scientist	Joy Nichols
V&V Date (YYYY-MM-DD)	2012.08.20
V&V Edition	1
V&V Disposition and Status	OK
V&V Charge Time	10.1836317

A.2 Comments