

V&V Reference Report

L2 ASCDS Version : 8.4.4

Observation 8356 - L2 Version 5
Chandra X-Ray Center

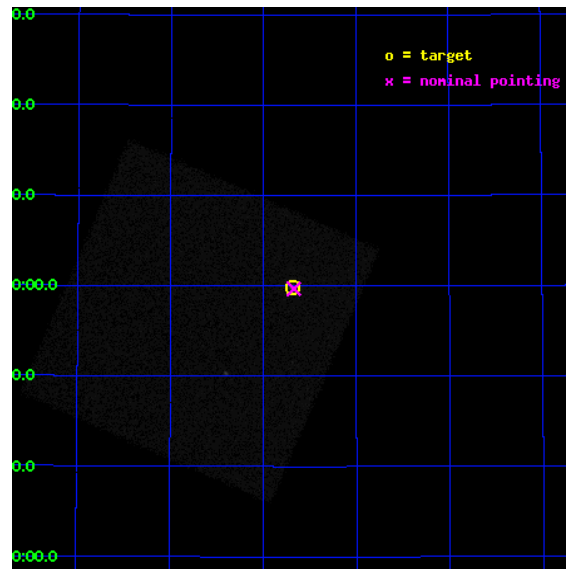
L2 Processing Date : Aug 11 2012

Contents

1	Front	2
2	OBI	3
2.1	OBI	3
2.1.1	Images	3
2.1.2	Parameters	4
2.1.3	Events	4
2.2	Compared Parameters	5
2.3	Aspect	6
2.4	Star Slots	9
2.4.1	Slot 3	9
2.4.2	Slot 4	10
2.4.3	Slot 5	11
2.4.4	Slot 6	12
2.4.5	Slot 7	13
2.5	FID Slots	14
2.5.1	Slot 0	14
2.5.2	Slot 1	15
2.5.3	Slot 2	16
A	Summary	17
A.1	Status	17
A.2	Comments	17

1 Front

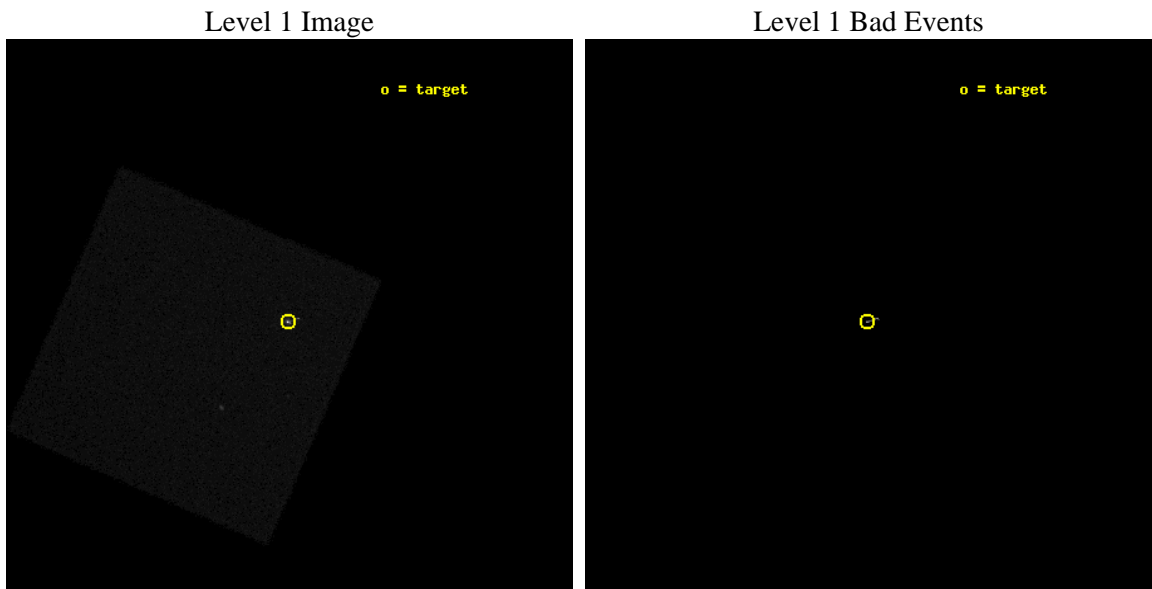
seq_num	290735	Sequence number
obs_id	8356	Observation id
title	Improving the De-Gap Corrections for the HRC-I	Proposal title
observer	Dr. CXC Calibration	Principal investigator
object	Capella	Source name
ra_targ	79.1725	Observer's specified target RA [deg]
dec_targ	45.998	Observer's specified target Dec [deg]
ra_nom	79.16800193098	Nominal RA [deg]
dec_nom	45.99471793911	Nominal Dec [deg]
roll_nom	248.47357041088	Nominal Roll [deg]
revision	5	Processing version of data
ontime	4795.206477344	[s]
livetime	4743.3514451706	Ontime multiplied by DTCOR
l2events	356974	Number of level 2 events



2 OBI

2.1 OBI

2.1.1 Images



2.1.2 Parameters

obi_num	0	Obi number	sched_exp_time	5000.000000	[s] Scheduled observation exposure time
ascdsver	8.4.5	Processing system revision	ontime	4795.206477344	[s]
caldbver	4.5.1.1	 	l1events	499834	Number of level 1 events
date	2012-08-11T17:55:54	Date and time of file creation			
revision	5	Processing version of data			

2.1.3 Events

Level 1 Events

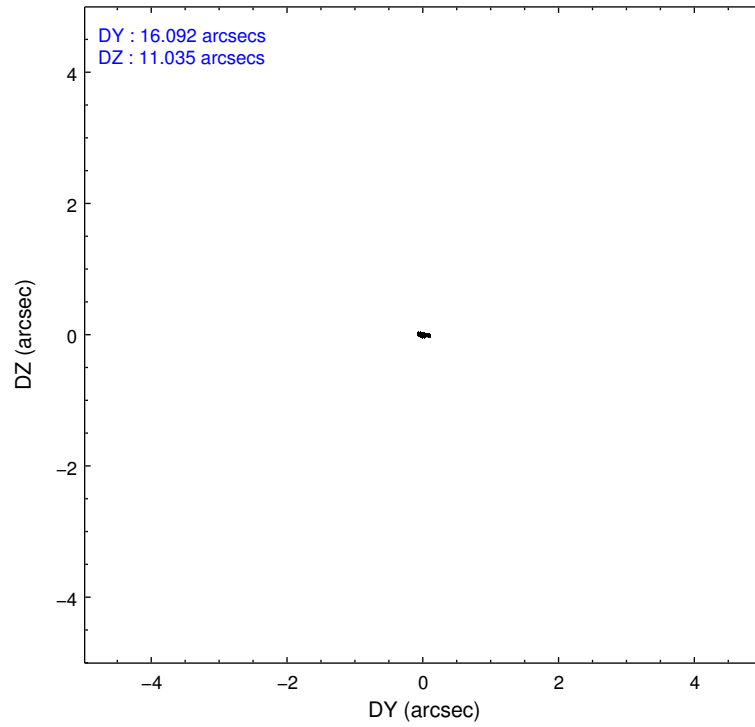
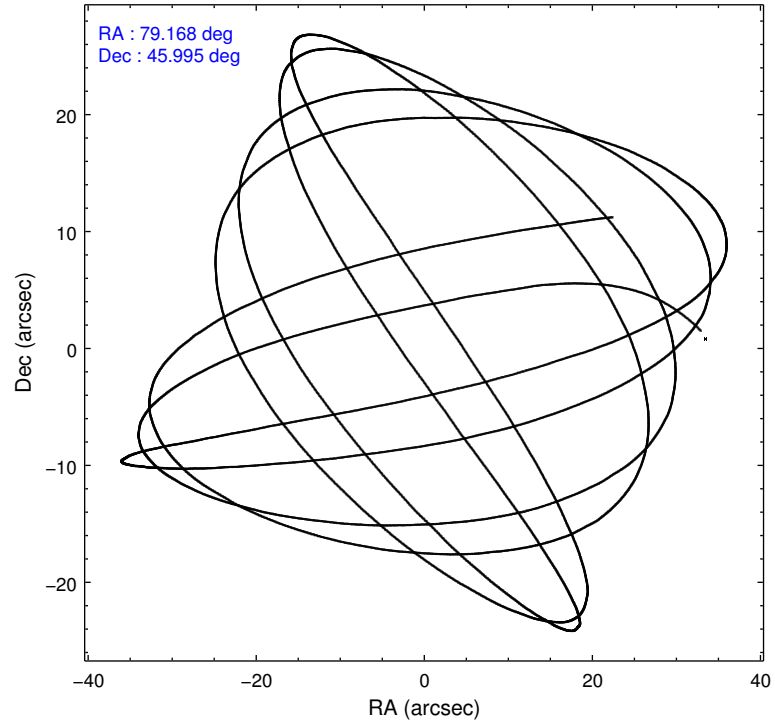
	segment 0
level 1 events	499834
rejected events	17549
rejected %	3%

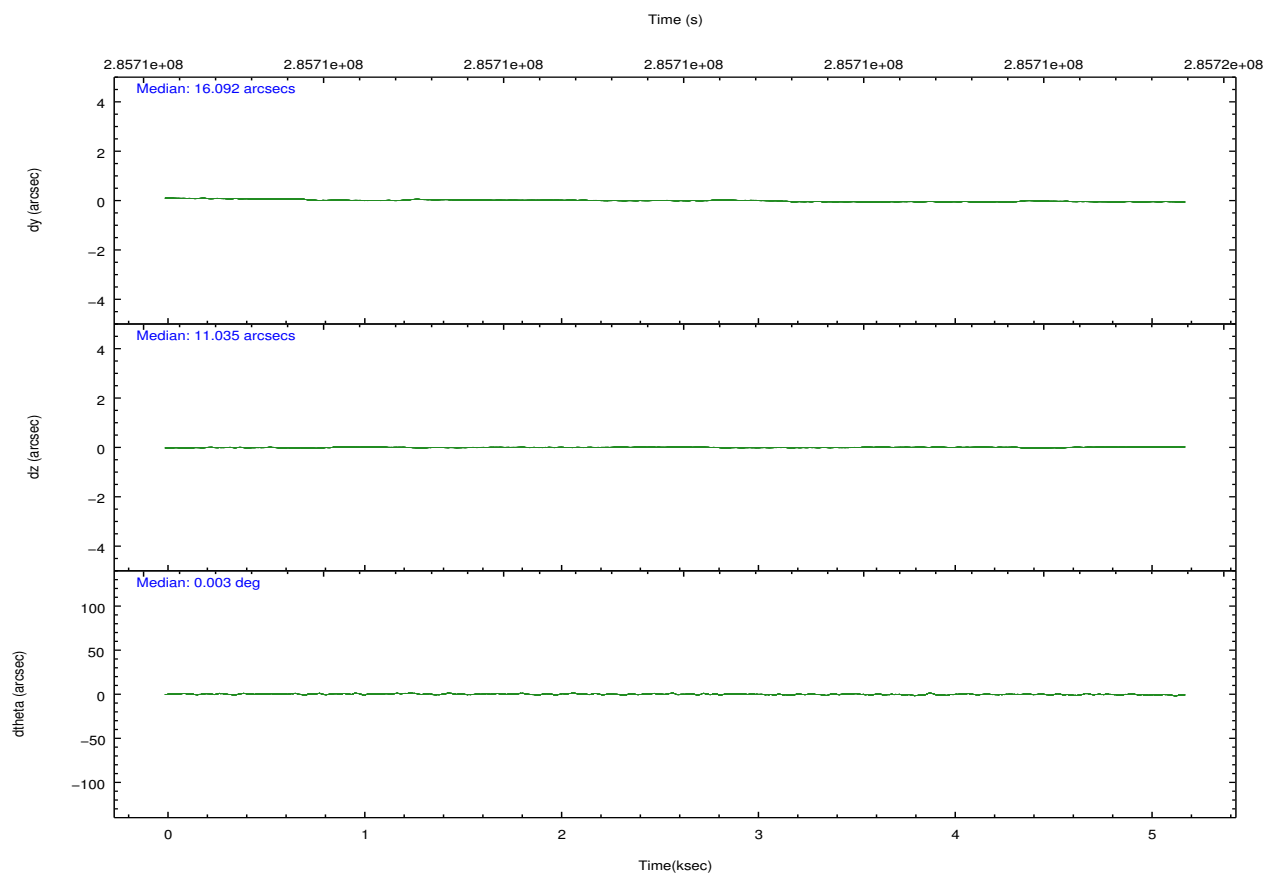
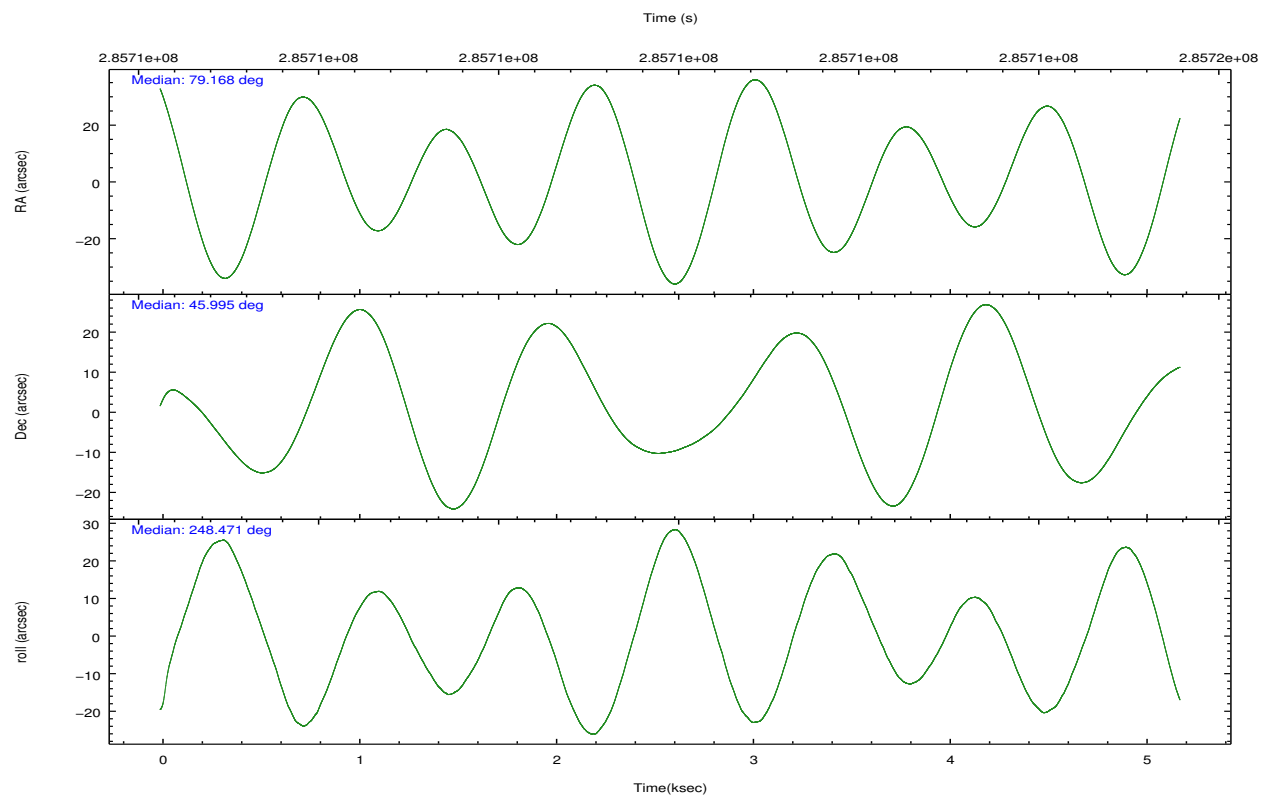
2.2 Compared Parameters

Parameter	Planned	Actual
Instrument	HRC	HRC
Detector	HRC-I	HRC-I
Grating	NONE	NONE
Data mode	OBSERVING	OBSERVING
Observation mode	POINTING	POINTING
[deg] Pointing RA	79.161663	79.16800193098001
[deg] Pointing Dec	46.021721	45.99471793910968
[deg] Pointing Roll	248.573627	248.4735704108849
[mm] SIM focus pos	-1.040293	-1.038866356238299
[mm] SIM defocus	0	0.001426264420575141
[mm] SIM translation stage pos	93.985494	93.99516323351904
[mm] SIM translation stage offset	33	32.99032565808253
[s] Observation start time (MET)	285709543.184000	285707873.48617
Observation start date	2007-01-20T19:44:38	2007-01-20T19:17:53
[s] Observation end time (MET)	285714543.184000	285714677.94899
Observation end date	2007-01-20T21:07:58	2007-01-20T21:11:17

Parameter	Planned	Actual
Obspar format version number	7	7
Obspar file type	PREDICTED	ACTUAL
Obspar update status	NONE	UPDATED

2.3 Aspect



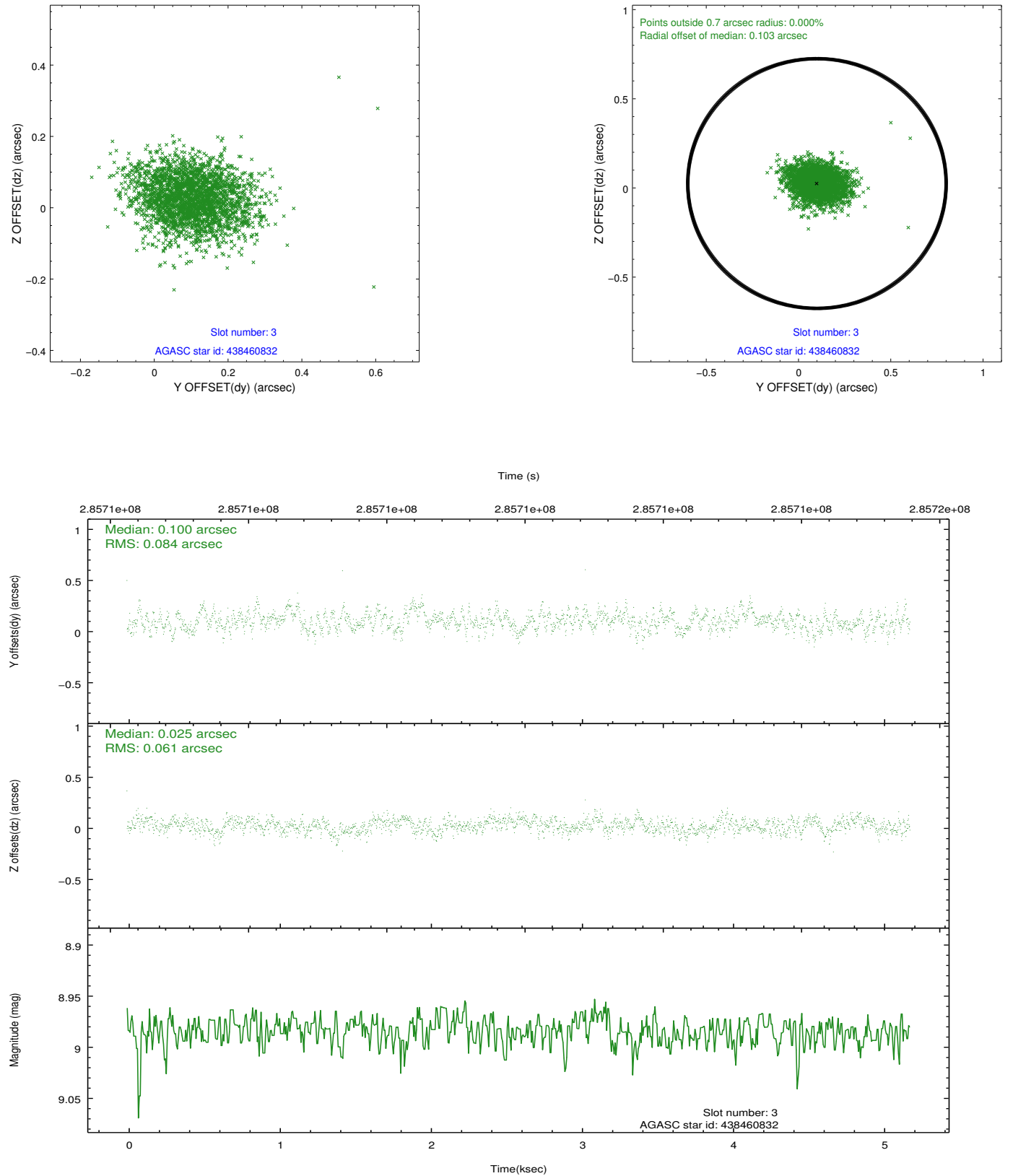


Slot Statistics

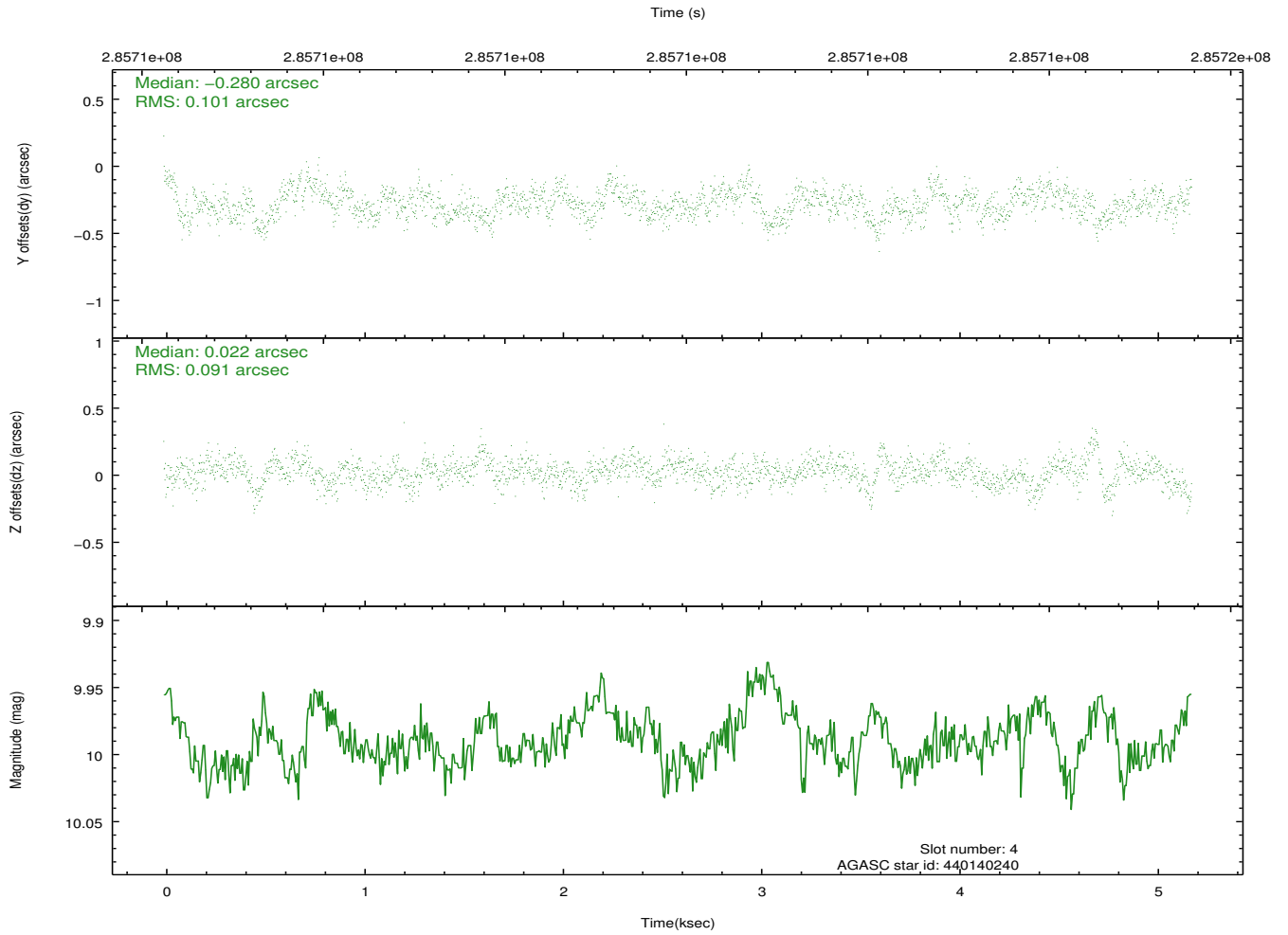
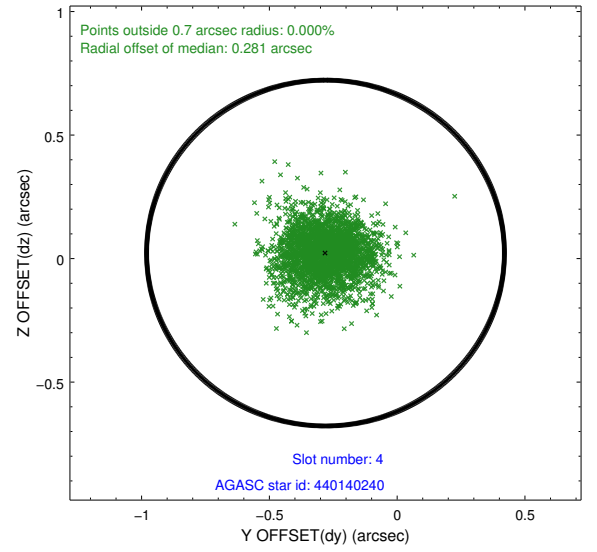
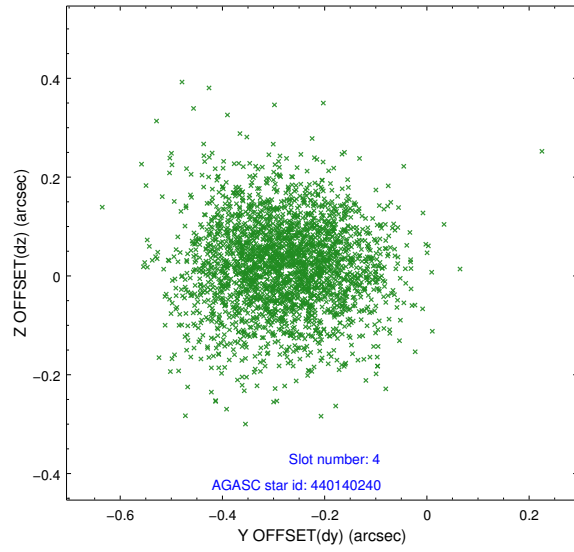
slot	status	id	mag	n_pts	med_dy	med_dz	dr1	dr2	ra	dec	mean_y	mean_z
0	FID	HRC-I-1	6.93	1264	0.004	-0.018	0.009	0.017	0.000000	0.000000	-770.56	-624.47
1	FID	HRC-I-2	7.08	1263	-0.105	0.173	0.006	0.011	0.000000	0.000000	839.44	-622.58
2	FID	HRC-I-3	7.03	1265	0.221	-0.241	0.008	0.013	0.000000	0.000000	-1200.31	1682.92
3	GUIDE	438460832	8.98	2523	0.100	0.025	0.109	0.179	78.414614	45.554782	2244.49	-1141.15
4	GUIDE	440140240	9.99	2523	-0.280	0.022	0.144	0.236	78.889349	46.726437	-2117.00	-1552.56
5	GUIDE	438448496	8.03	2529	0.408	-0.197	0.101	0.174	77.967952	45.656964	2298.05	-2324.50
6	GUIDE	440150048	7.15	2529	-0.296	-0.038	0.083	0.129	79.112838	46.416060	-1277.03	-631.64
7	GUIDE	438441368	9.98	2525	0.061	0.185	0.165	0.283	78.646413	46.420494	-873.89	-1715.58

2.4 Star Slots

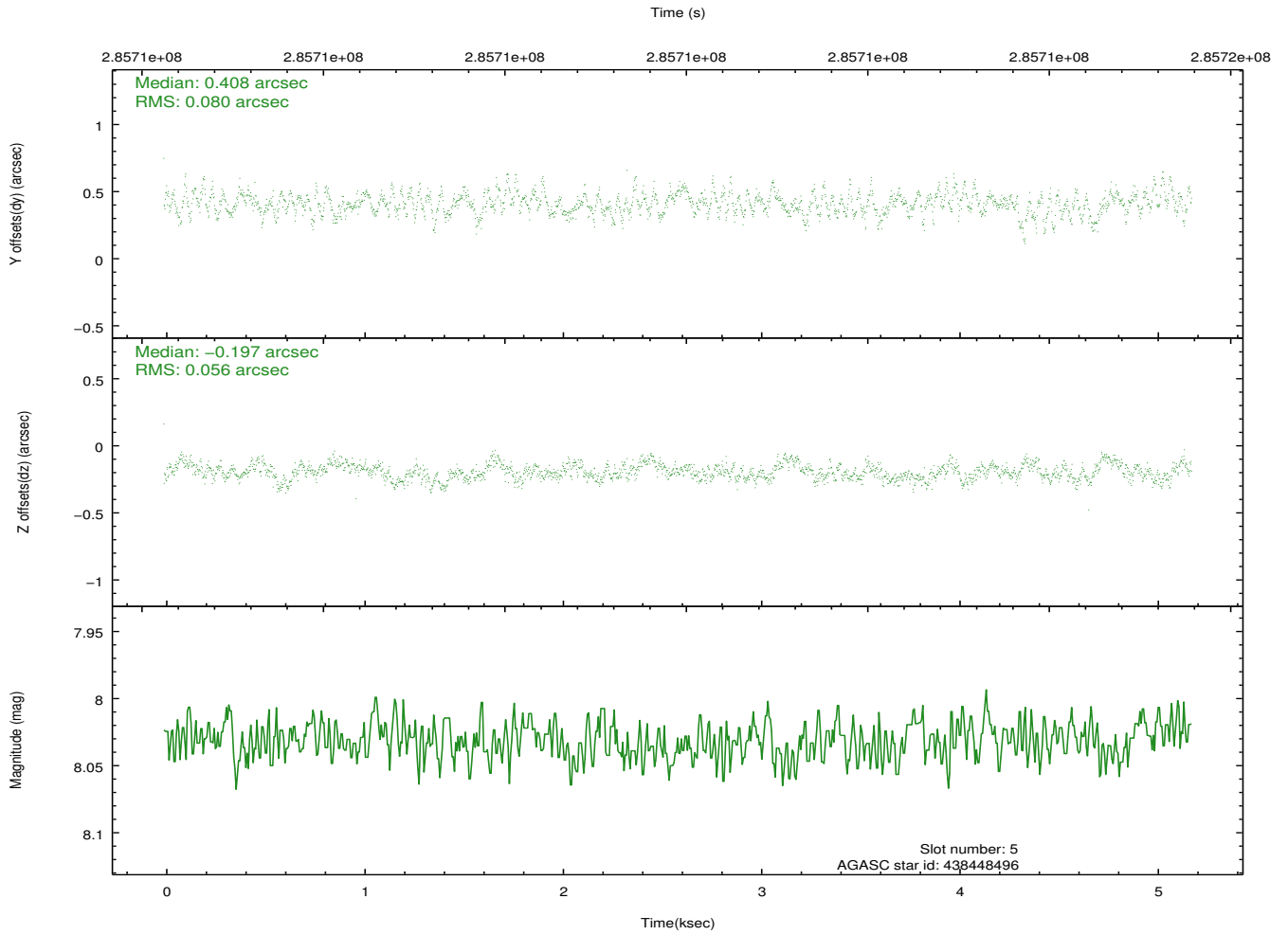
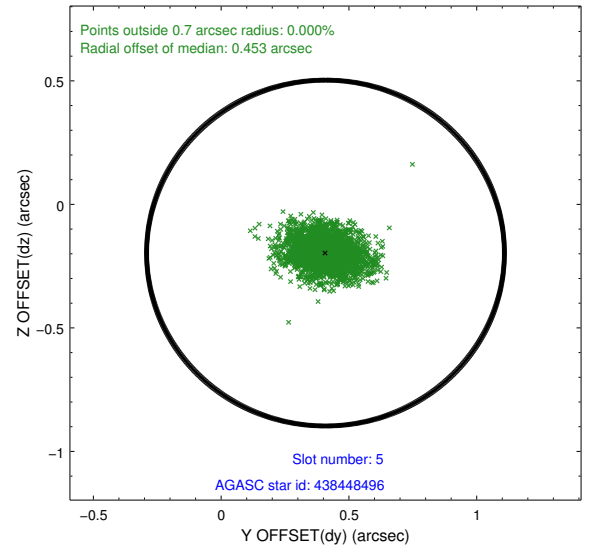
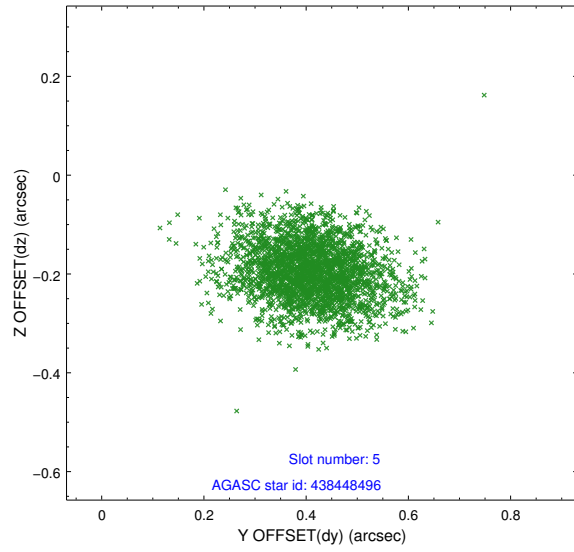
2.4.1 Slot 3



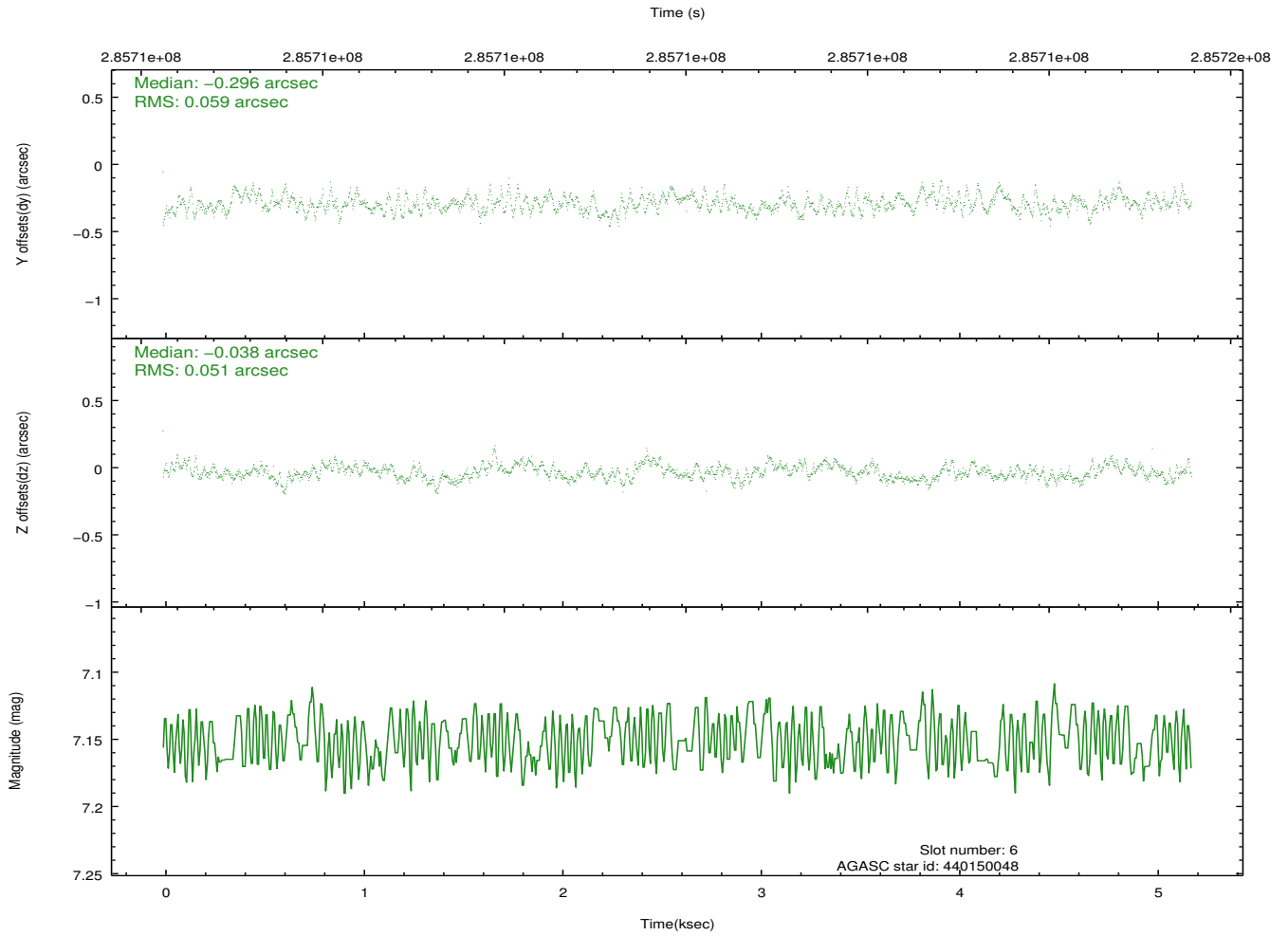
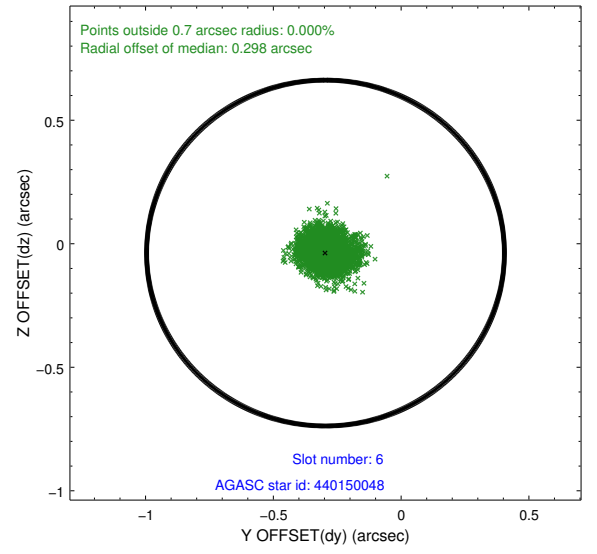
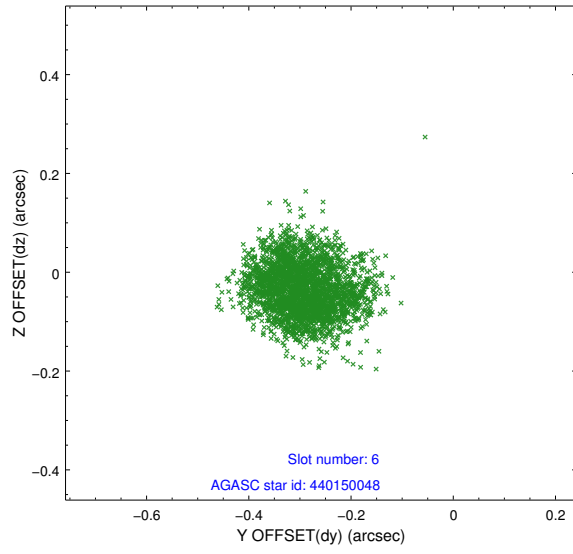
2.4.2 Slot 4



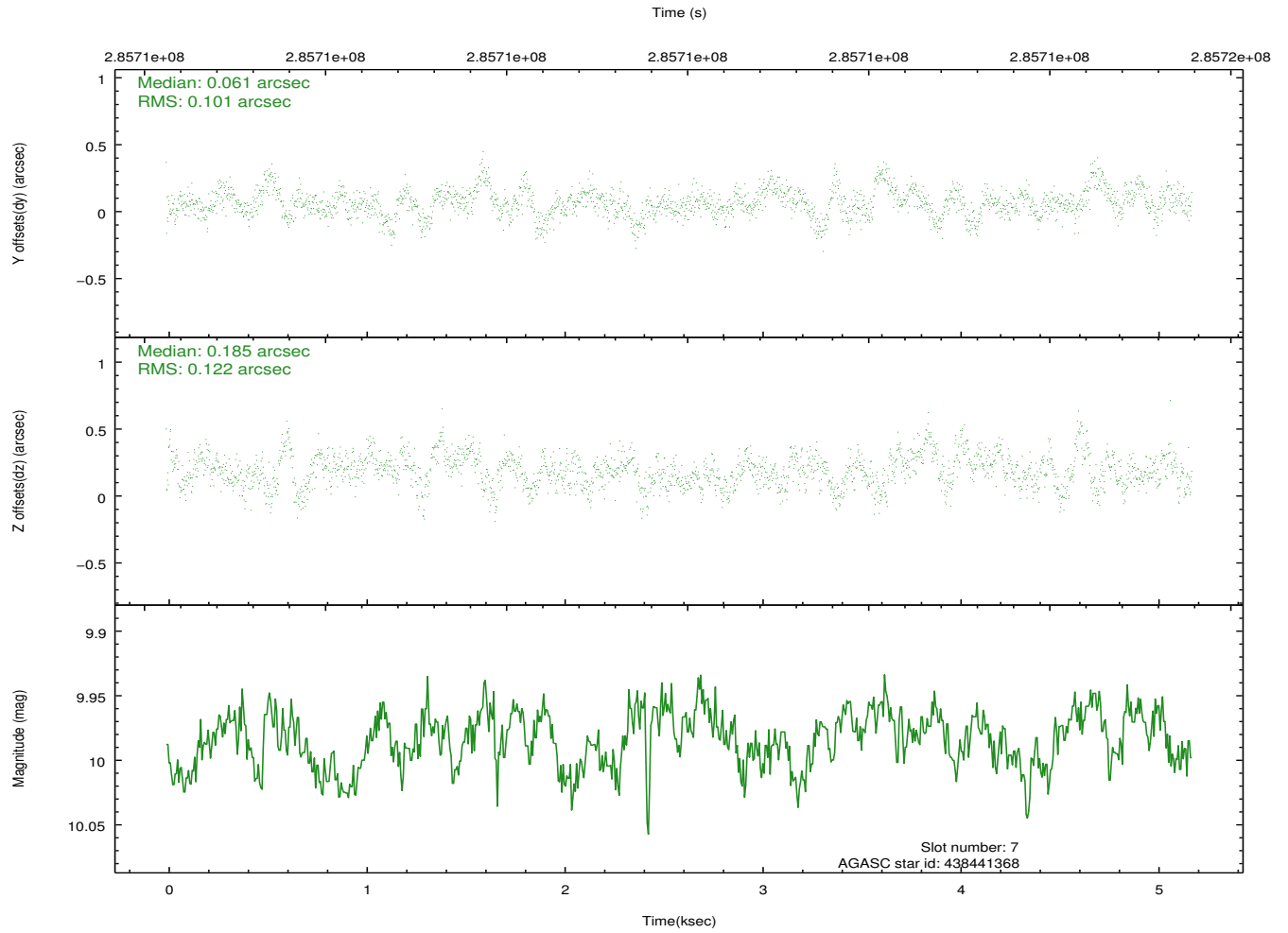
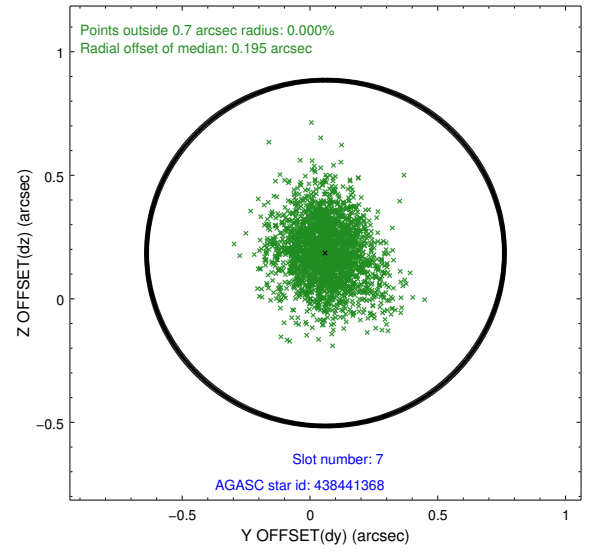
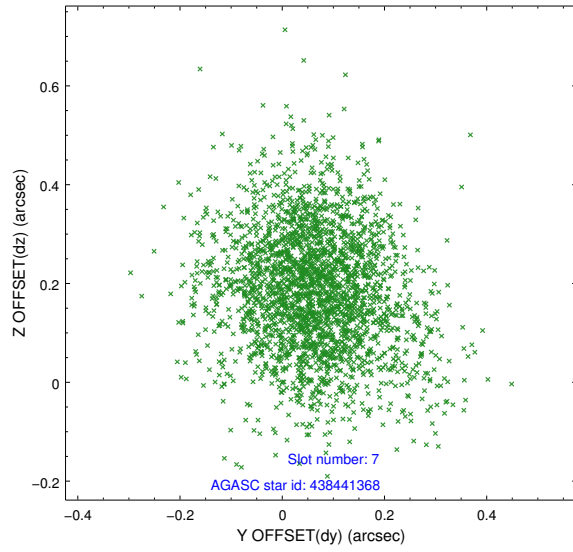
2.4.3 Slot 5



2.4.4 Slot 6

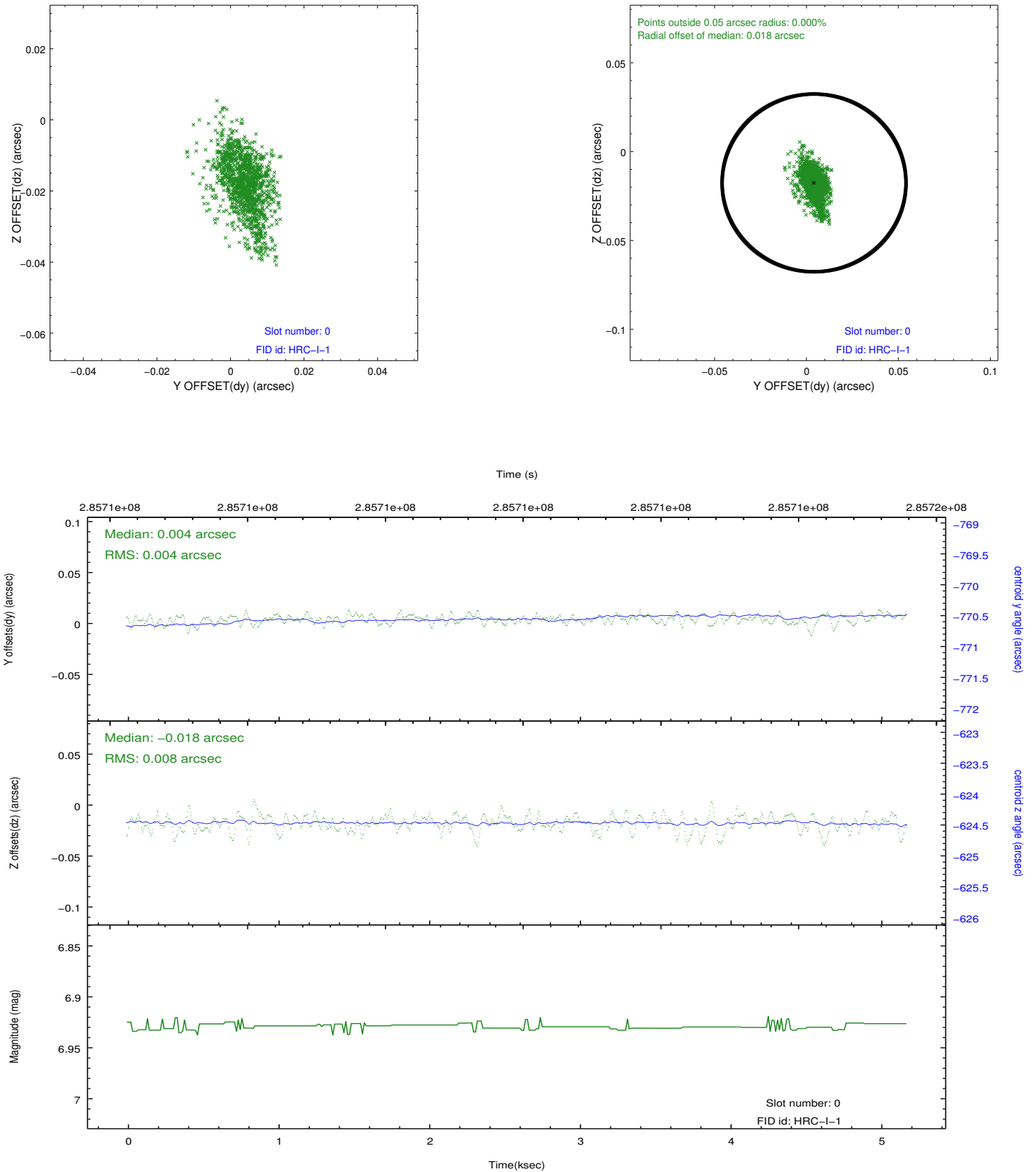


2.4.5 Slot 7

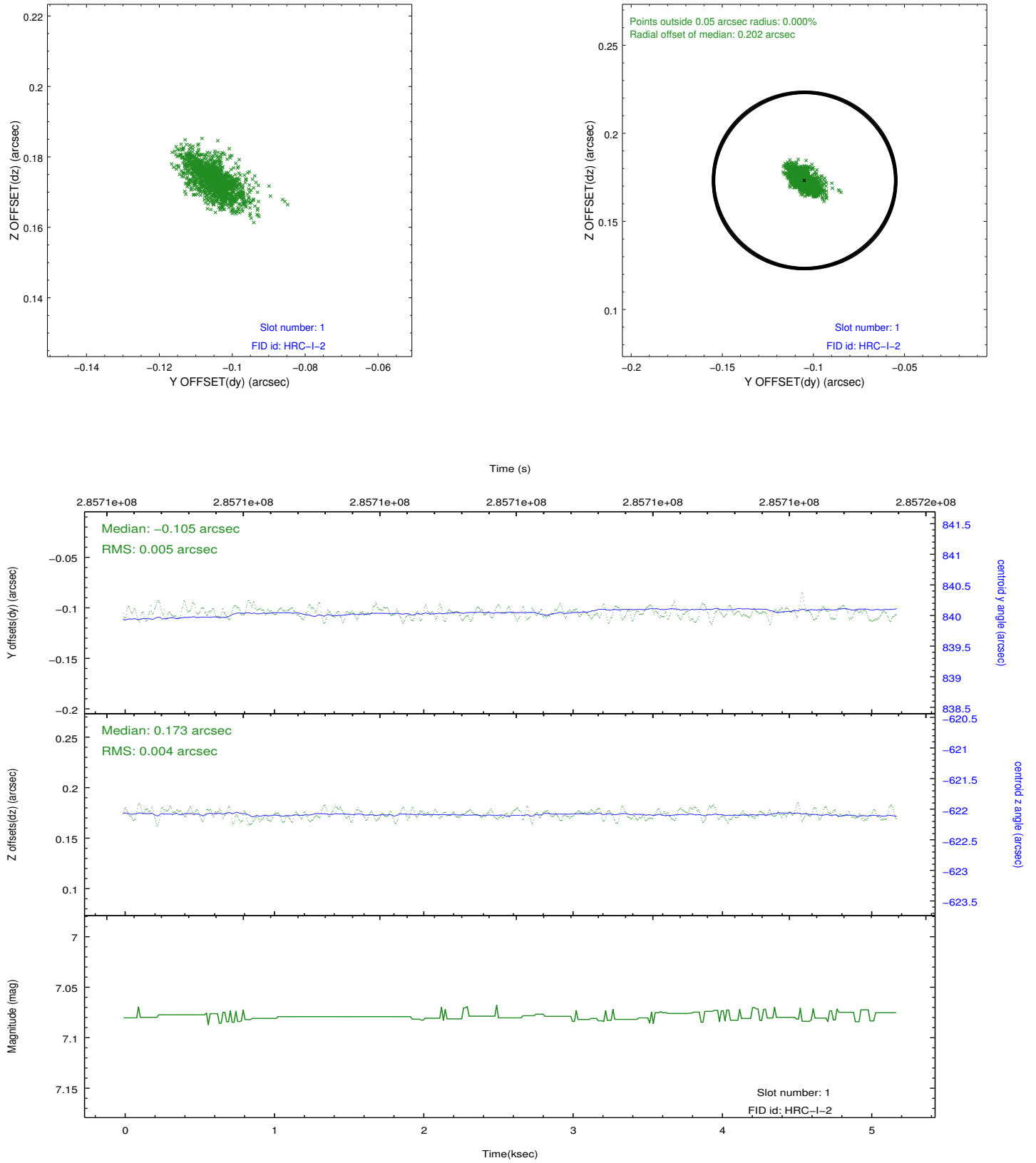


2.5 FID Slots

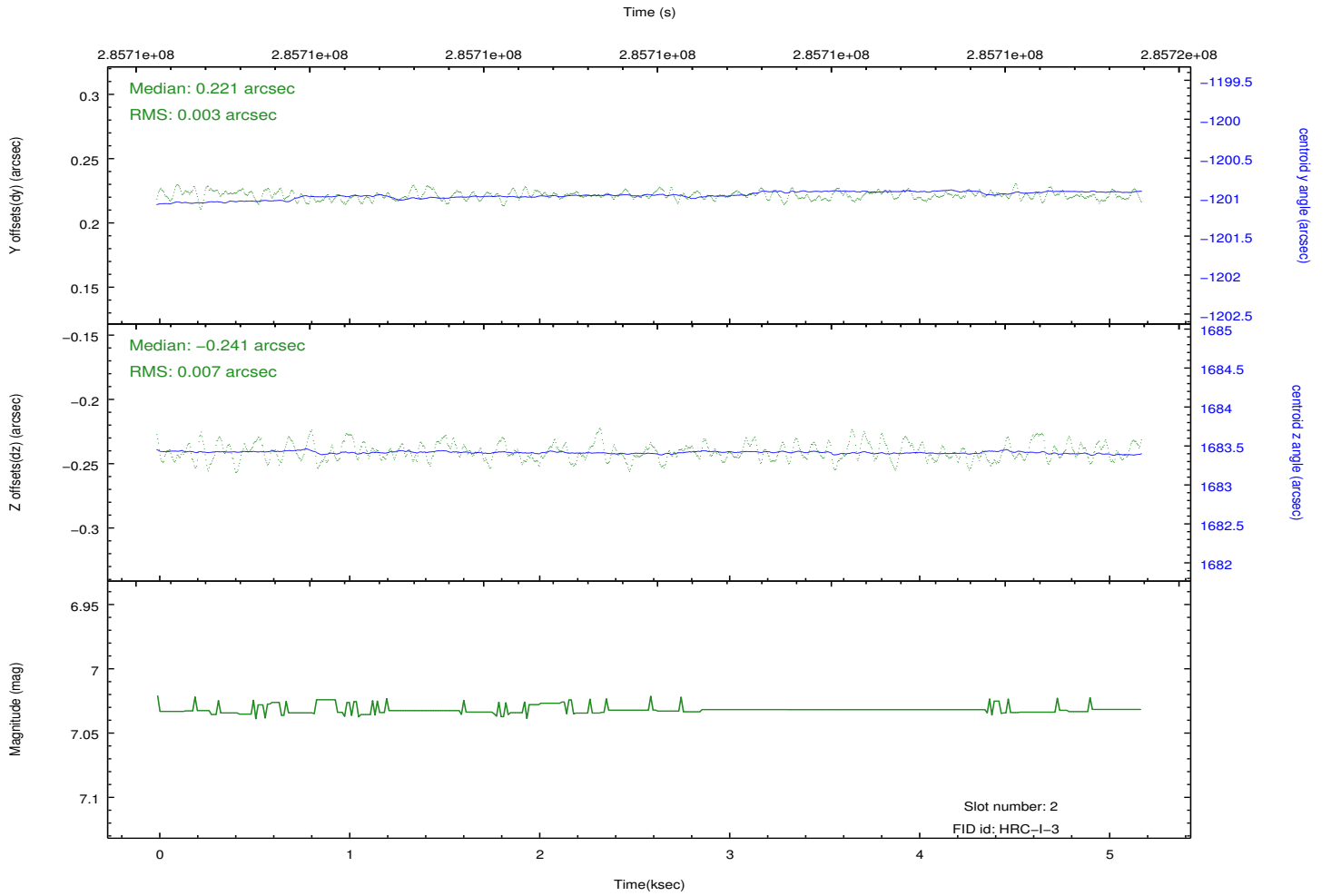
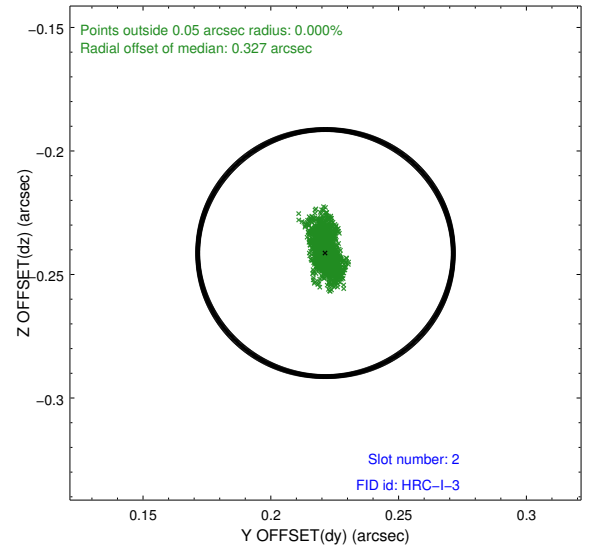
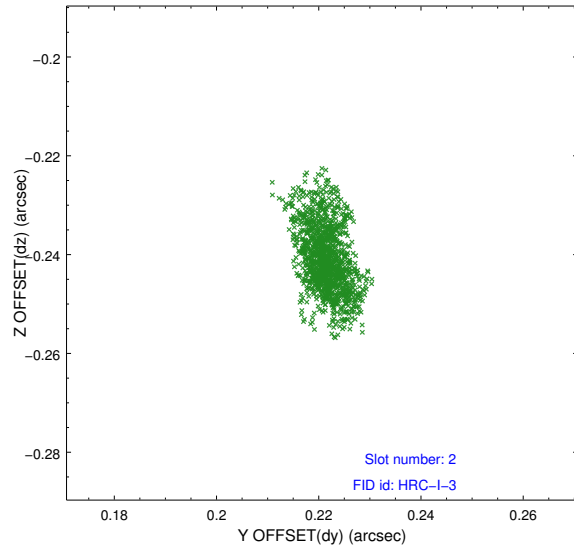
2.5.1 Slot 0



2.5.2 Slot 1



2.5.3 Slot 2



A Summary

A.1 Status

V&V Scientist	Jen Lauer
V&V Date (YYYY-MM-DD)	2012.08.14
V&V Edition	1
V&V Disposition and Status	OK
V&V Charge Time	4.79520647

A.2 Comments