

V&V Reference Report

L2 ASCDS Version : 8.4.4

Observation 8355 - L2 Version 5
Chandra X-Ray Center

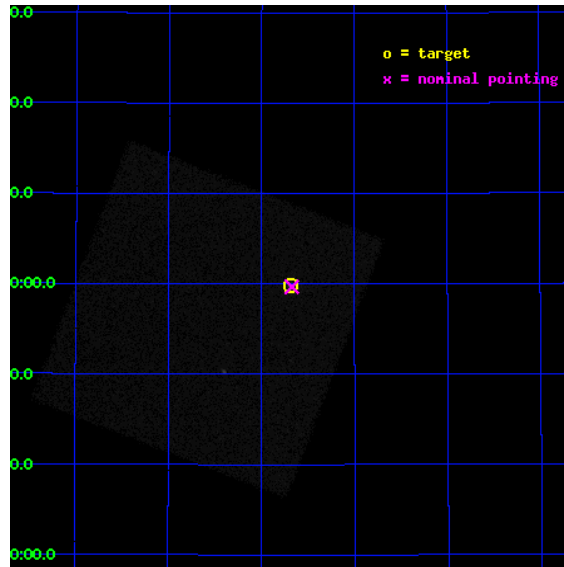
L2 Processing Date : Aug 11 2012

Contents

1	Front	2
2	OBI	3
2.1	OBI	3
2.1.1	Images	3
2.1.2	Parameters	4
2.1.3	Events	4
2.2	Compared Parameters	5
2.3	Aspect	6
2.4	Star Slots	9
2.4.1	Slot 3	9
2.4.2	Slot 4	10
2.4.3	Slot 5	11
2.4.4	Slot 6	12
2.4.5	Slot 7	13
2.5	FID Slots	14
2.5.1	Slot 0	14
2.5.2	Slot 1	15
2.5.3	Slot 2	16
A	Summary	17
A.1	Status	17
A.2	Comments	17

1 Front

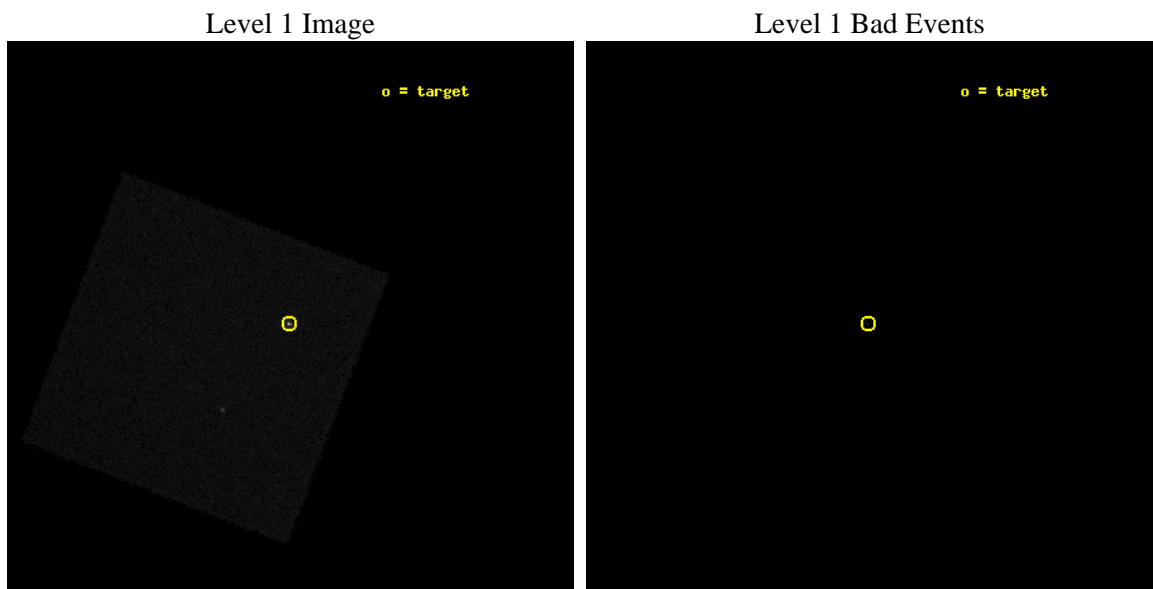
seq_num	290734	Sequence number
obs_id	8355	Observation id
title	Improving the De-Gap Corrections for the HRC-I	Proposal title
observer	Dr. CXC Calibration	Principal investigator
object	Capella	Source name
ra_targ	79.1725	Observer's specified target RA [deg]
dec_targ	45.998	Observer's specified target Dec [deg]
ra_nom	79.16834580963	Nominal RA [deg]
dec_nom	45.994812207078	Nominal Dec [deg]
roll_nom	246.02685776276	Nominal Roll [deg]
revision	5	Processing version of data
ontime	5187.3971190453	[s]
livetime	5133.1393122101	Ontime multiplied by DTCOR
l2events	368090	Number of level 2 events



2 OBI

2.1 OBI

2.1.1 Images



2.1.2 Parameters

obi_num	0	Obi number	sched_exp_time	5000.000000	[s] Scheduled observation exposure time
ascdsver	8.4.5	Processing system revision	ontime	5187.5252459049	[s]
caldbver	4.5.1.1	 	l1events	518584	Number of level 1 events
date	2012-08-11T18:04:08	Date and time of file creation			
revision	5	Processing version of data			

2.1.3 Events

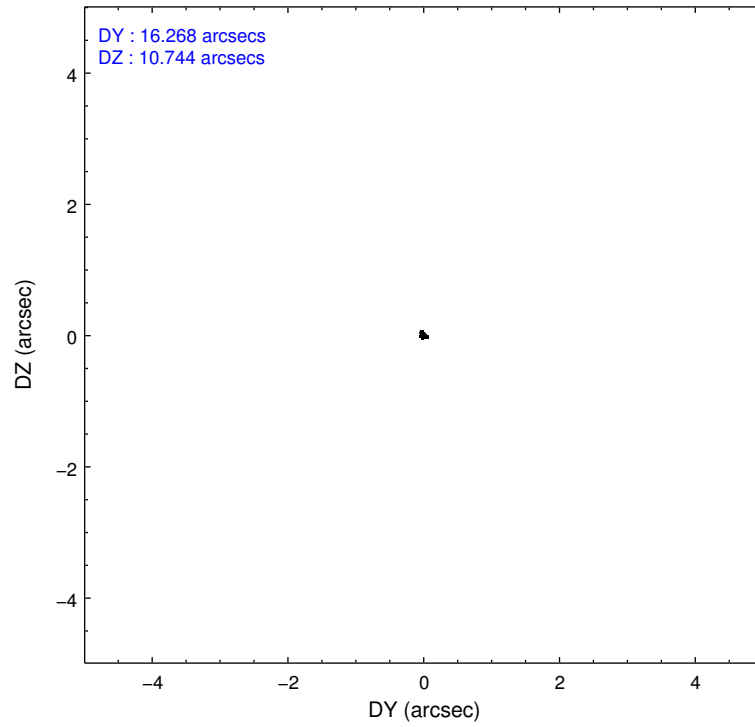
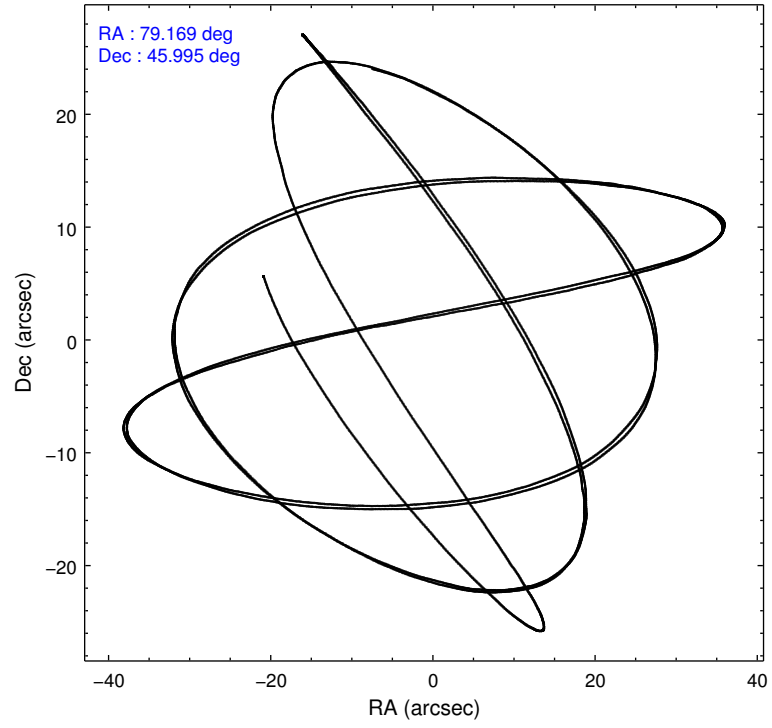
Level 1 Events

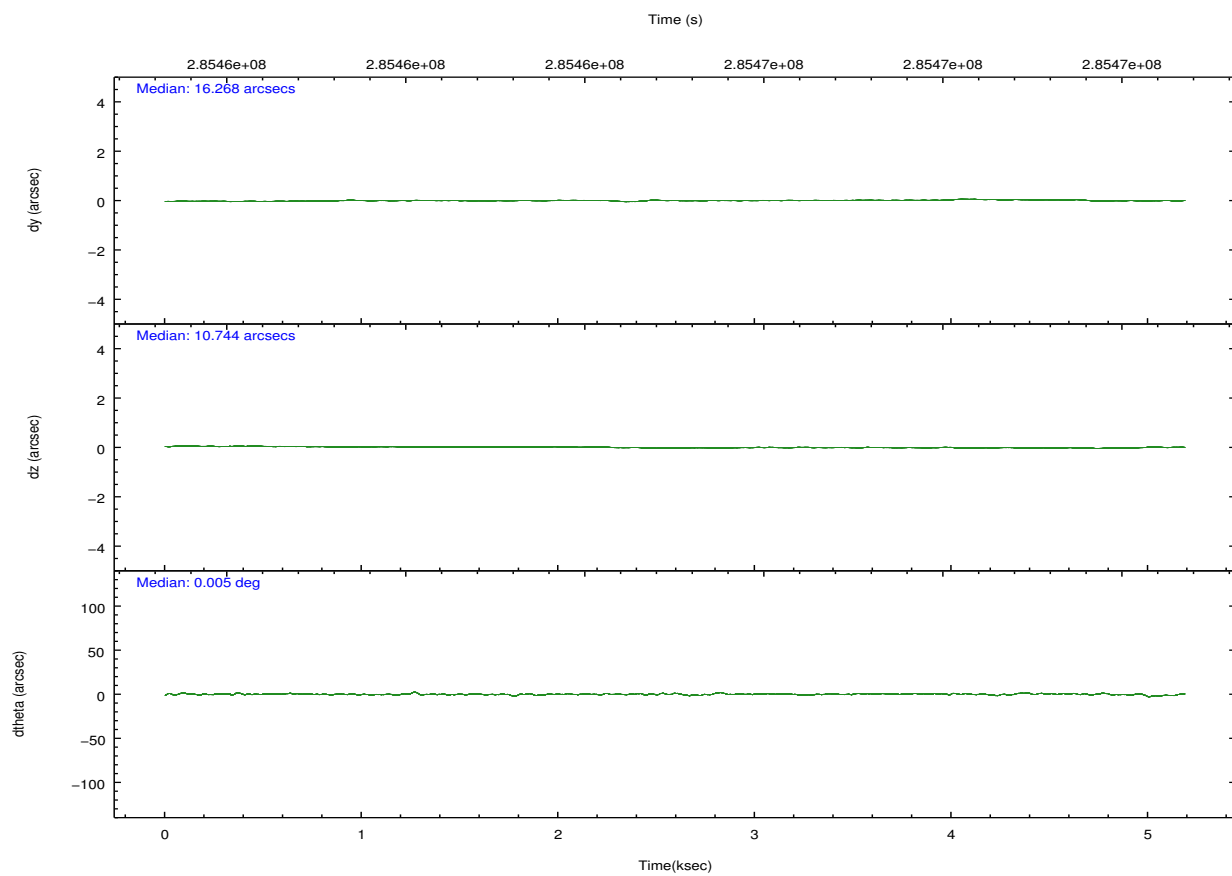
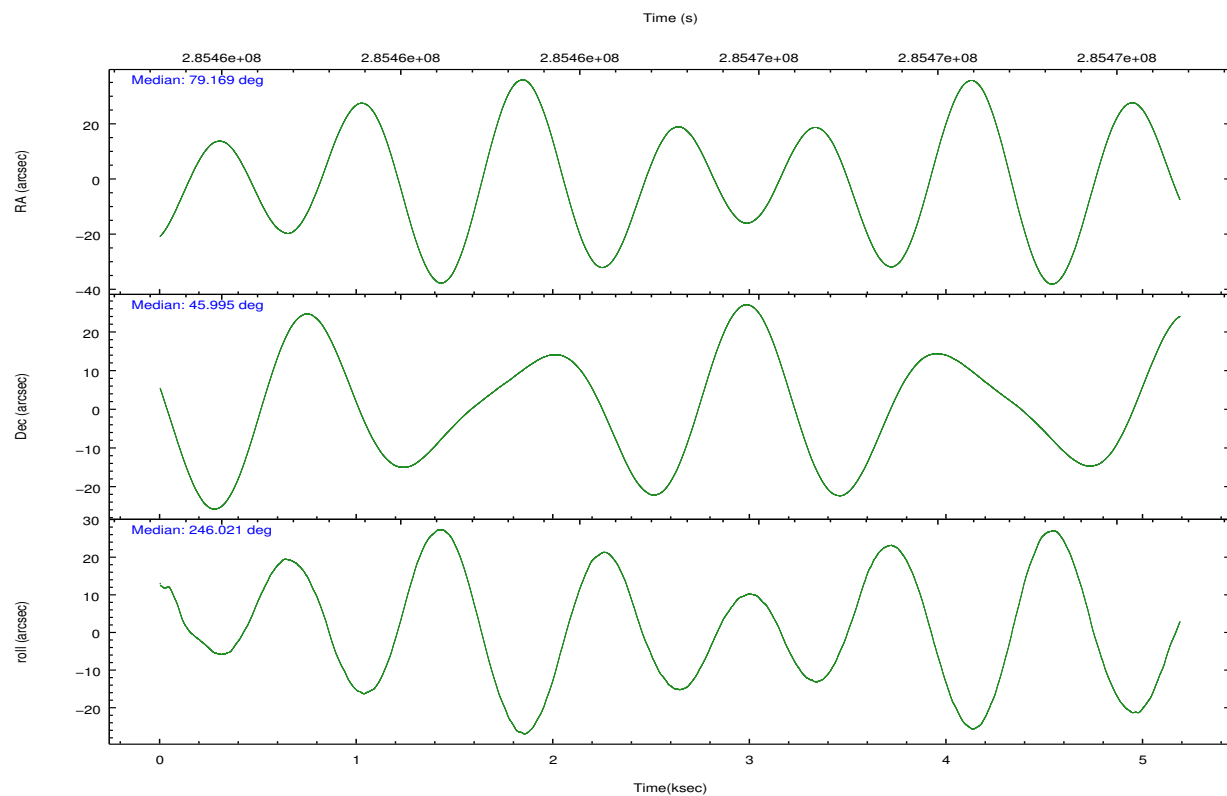
	segment 0
level 1 events	518584
rejected events	20741
rejected %	3%

2.2 Compared Parameters

Parameter	Planned	Actual	Parameter	Planned	Actual
Instrument	HRC	HRC	Obspar format version number	7	7
Detector	HRC-I	HRC-I	Obspar file type	PREDICTED	ACTUAL
Grating	NONE	NONE	Obspar update status	NONE	UPDATED
Data mode	OBSERVING	OBSERVING			
Observation mode	POINTING	POINTING			
[deg] Pointing RA	79.163138	79.16834580963008			
[deg] Pointing Dec	46.022019	45.99481220707833			
[deg] Pointing Roll	246.126081	246.0268577627623			
[mm] SIM focus pos	-1.040293	-1.038866356238299			
[mm] SIM defocus	0	0.001426264420575141			
[mm] SIM translation stage pos	96.985494	96.99474138828012			
[mm] SIM translation stage offset	30	29.99074750332144			
[s] Observation start time (MET)	285463102.184000	285462725.76205			
Observation start date	2007-01-17T23:17:17	2007-01-17T23:12:05			
[s] Observation end time (MET)	285468102.184000	285468921.88734			
Observation end date	2007-01-18T00:40:37	2007-01-18T00:55:21			

2.3 Aspect



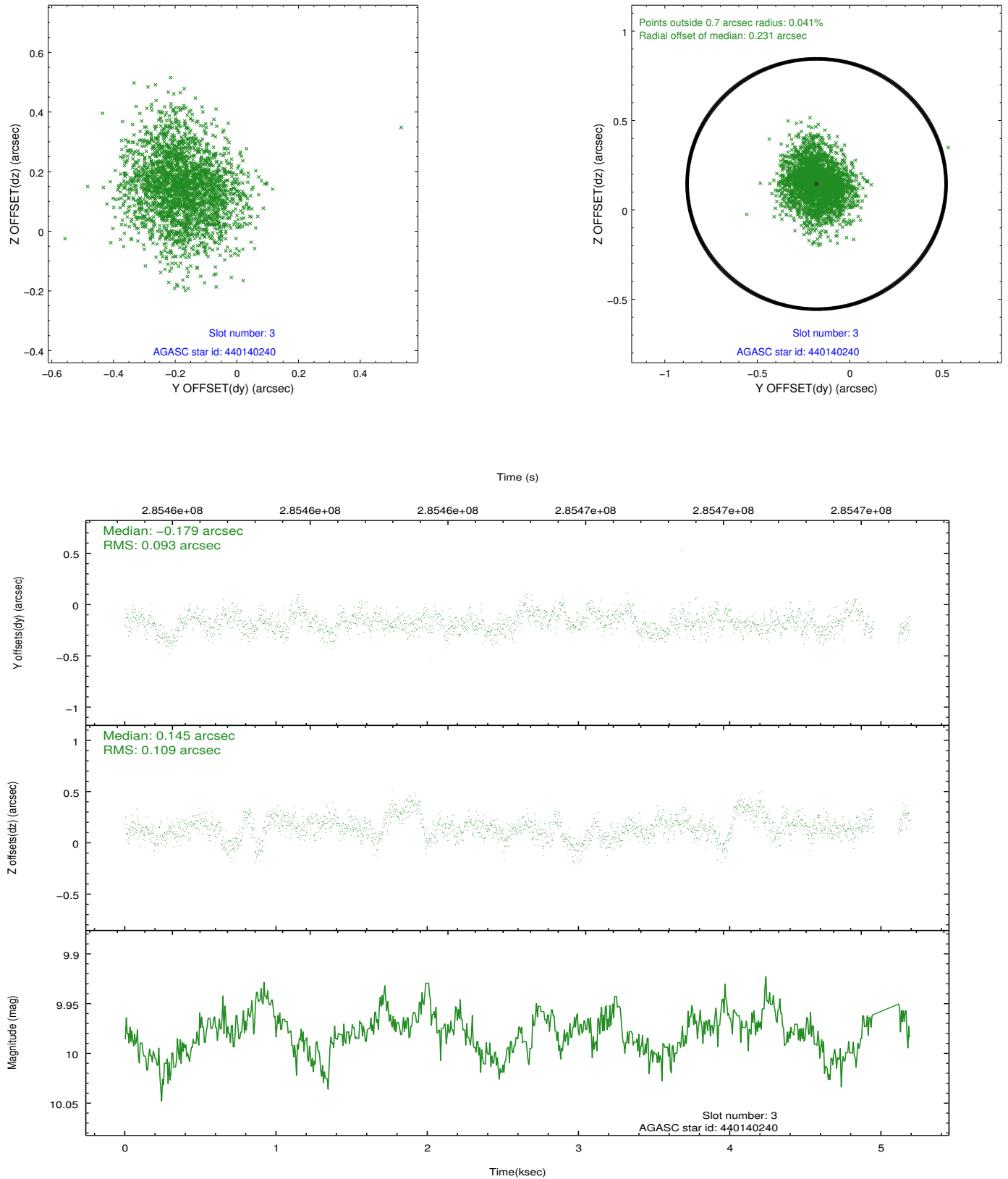


Slot Statistics

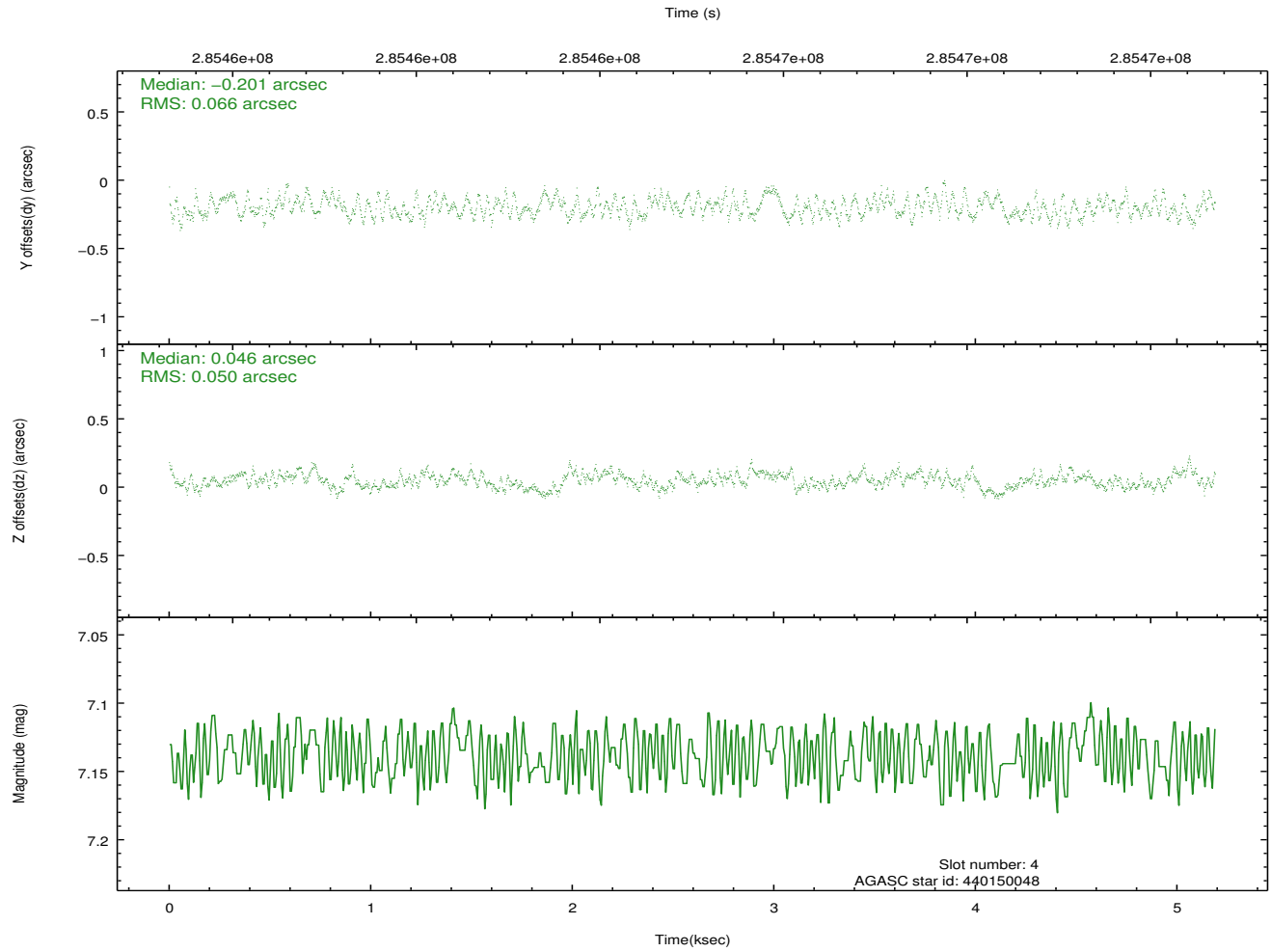
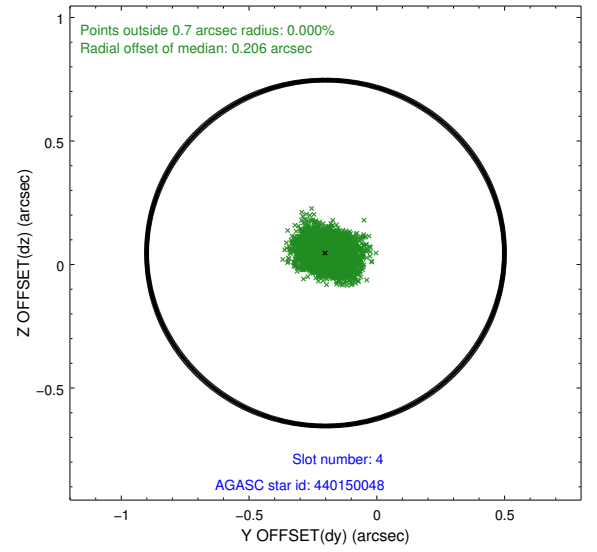
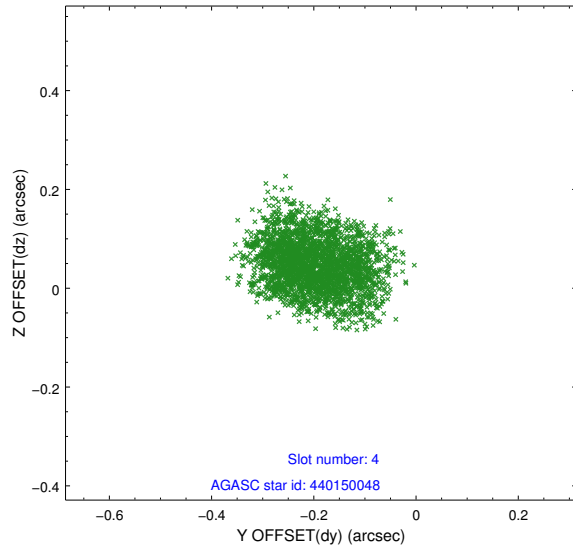
slot	status	id	mag	n_pts	med_dy	med_dz	dr1	dr2	ra	dec	mean_y	mean_z
0	FID	HRC-I-1	6.95	1265	-0.016	0.061	0.011	0.027	0.000000	0.000000	-770.90	-685.42
1	FID	HRC-I-2	7.11	1266	-0.077	0.148	0.007	0.015	0.000000	0.000000	839.32	-684.06
2	FID	HRC-I-3	7.07	1266	0.213	-0.294	0.009	0.018	0.000000	0.000000	-1200.39	1621.49
3	GUIDE	440140240	9.98	2450	-0.179	0.145	0.153	0.245	78.889349	46.726437	-2047.26	-1644.99
4	GUIDE	440150048	7.14	2532	-0.201	0.046	0.090	0.138	79.112838	46.416060	-1247.79	-689.54
5	GUIDE	438448496	8.03	2532	0.431	-0.103	0.093	0.154	77.967952	45.656964	2398.37	-2227.93
6	GUIDE	440163960	8.88	2530	-0.049	-0.018	0.088	0.140	79.298370	45.827072	504.73	592.84
7	GUIDE	440163560	9.55	2525	-0.016	-0.067	0.116	0.187	79.359509	46.135242	-571.57	282.32

2.4 Star Slots

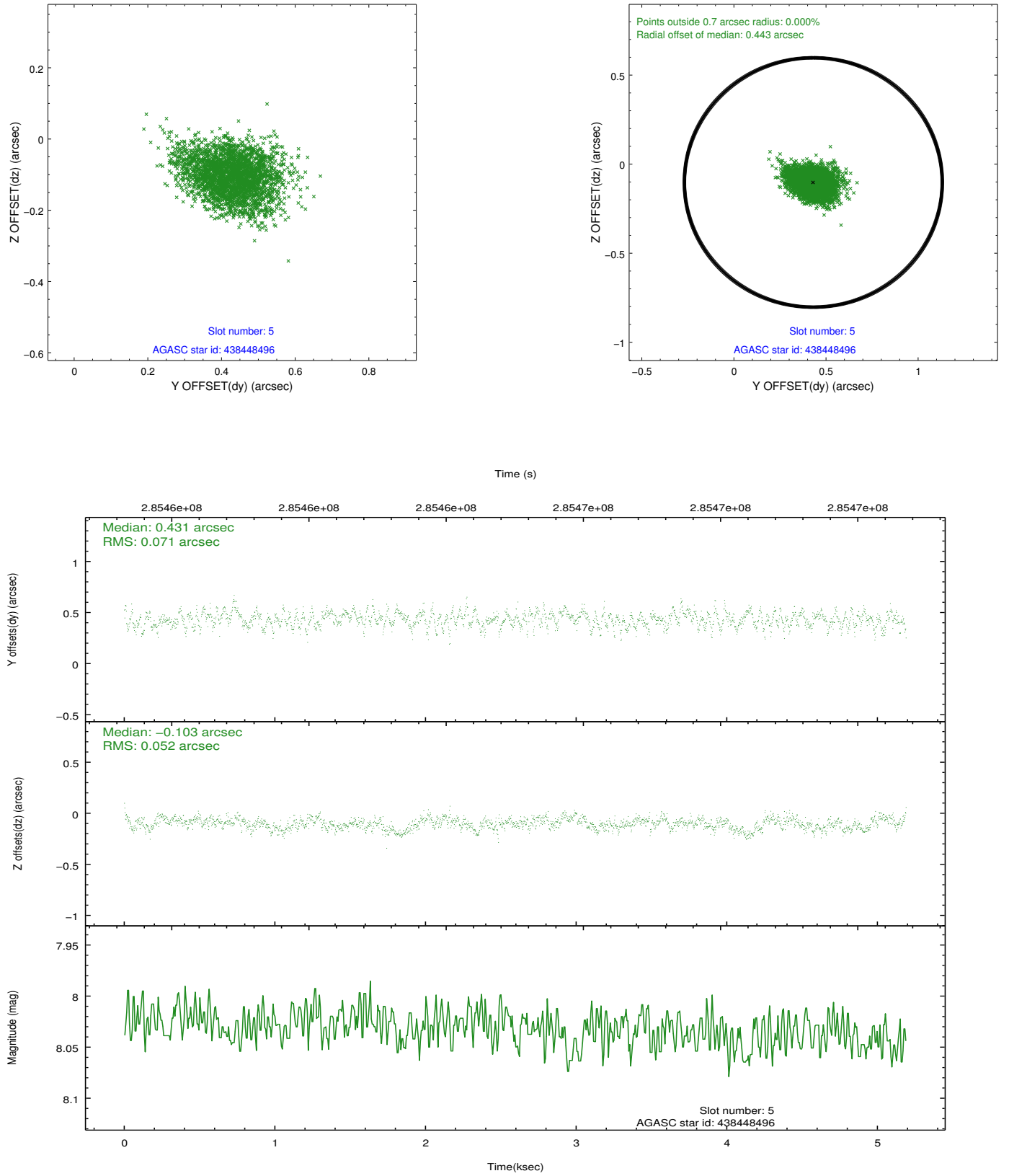
2.4.1 Slot 3



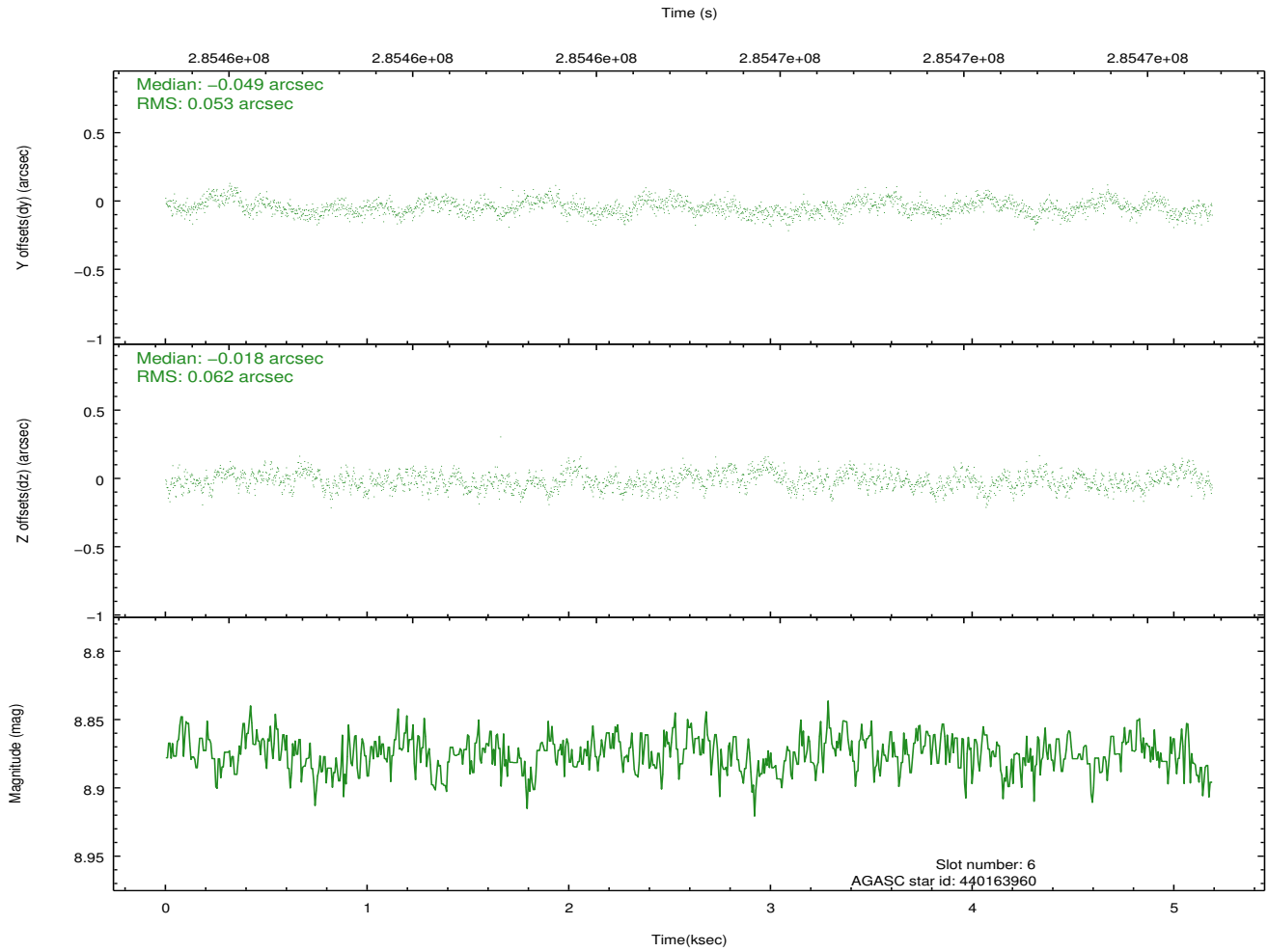
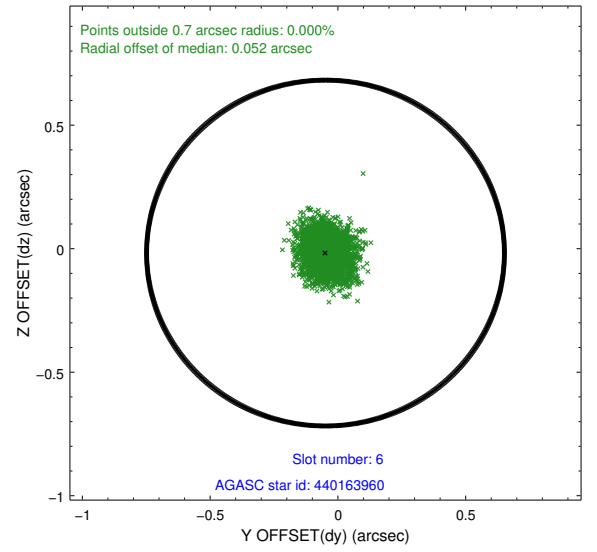
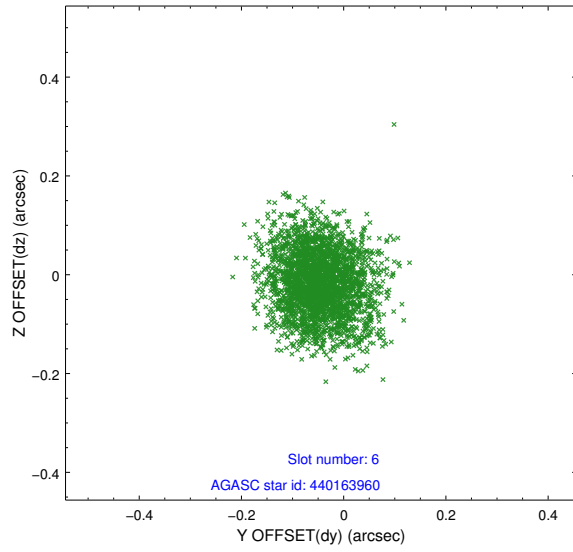
2.4.2 Slot 4



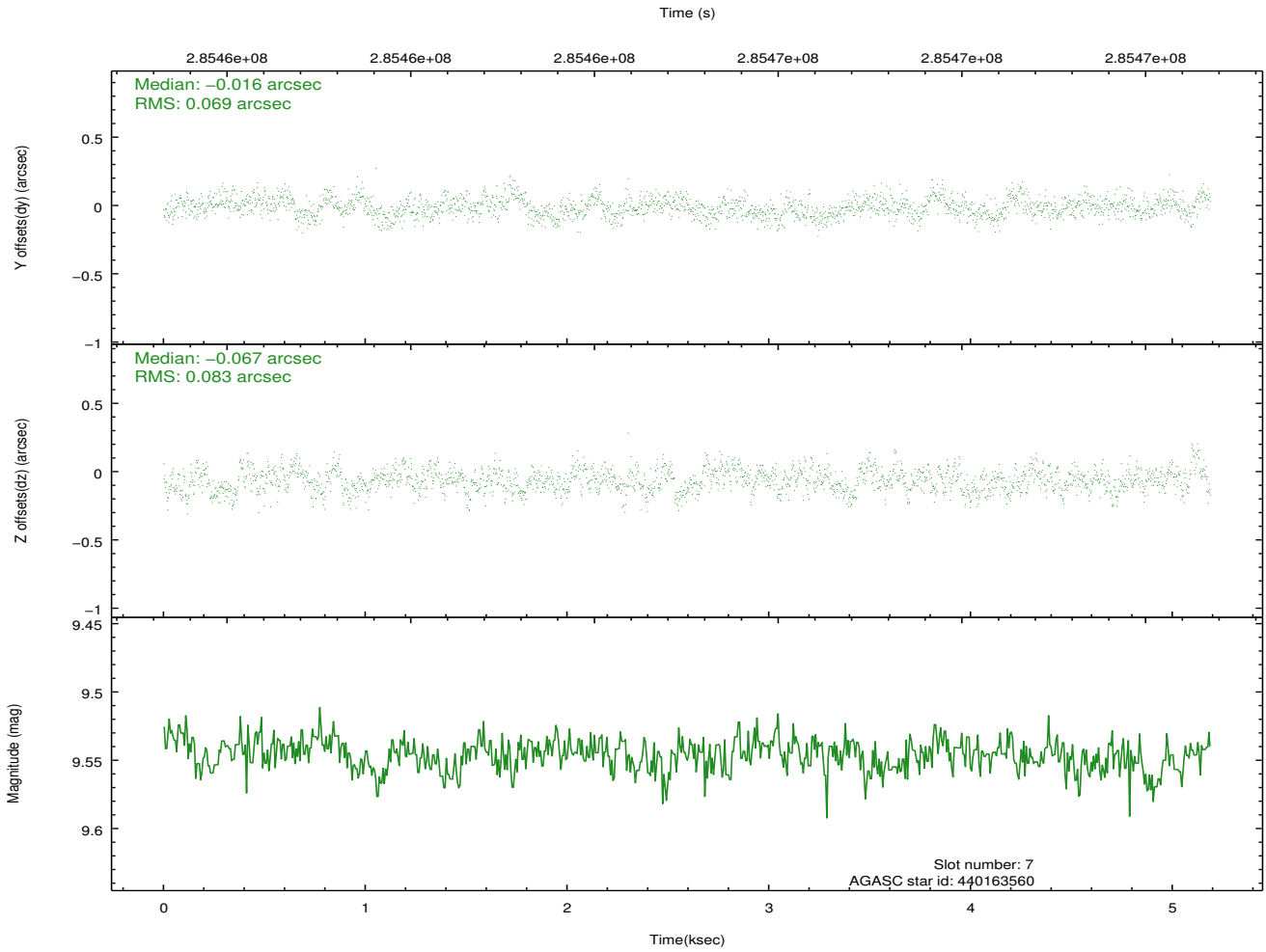
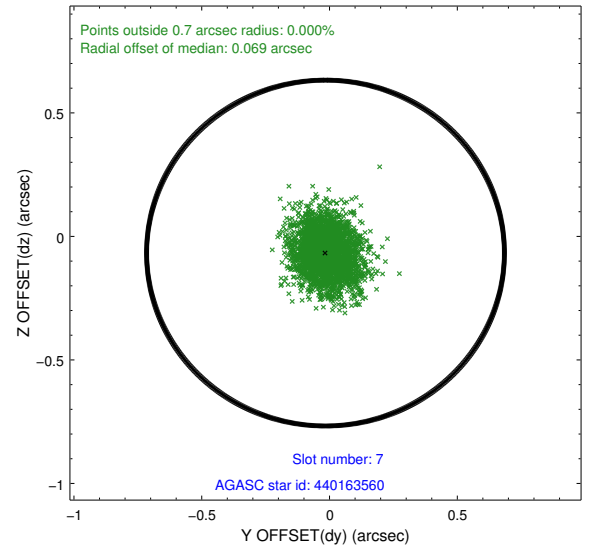
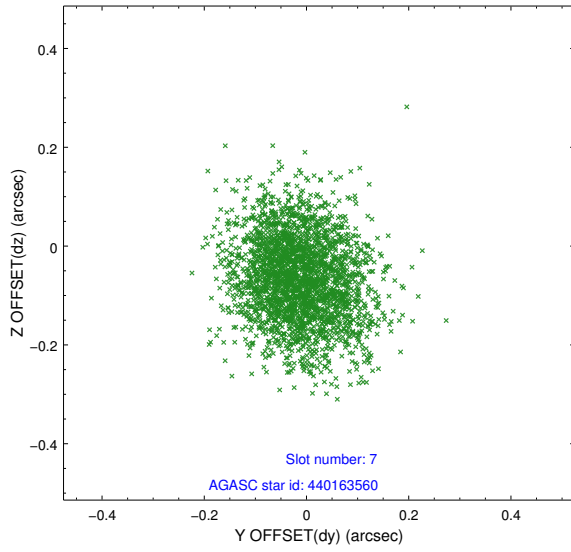
2.4.3 Slot 5



2.4.4 Slot 6

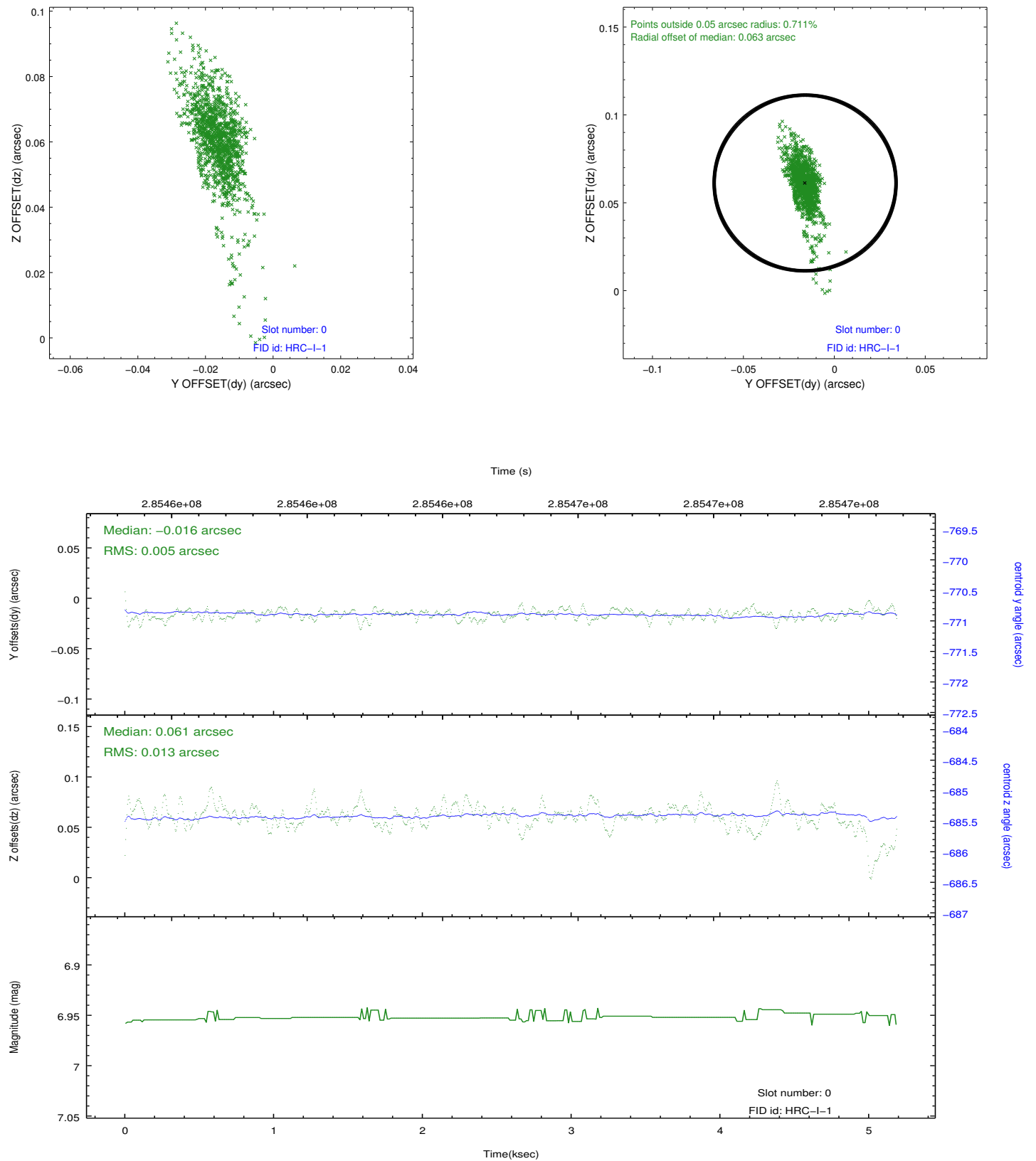


2.4.5 Slot 7

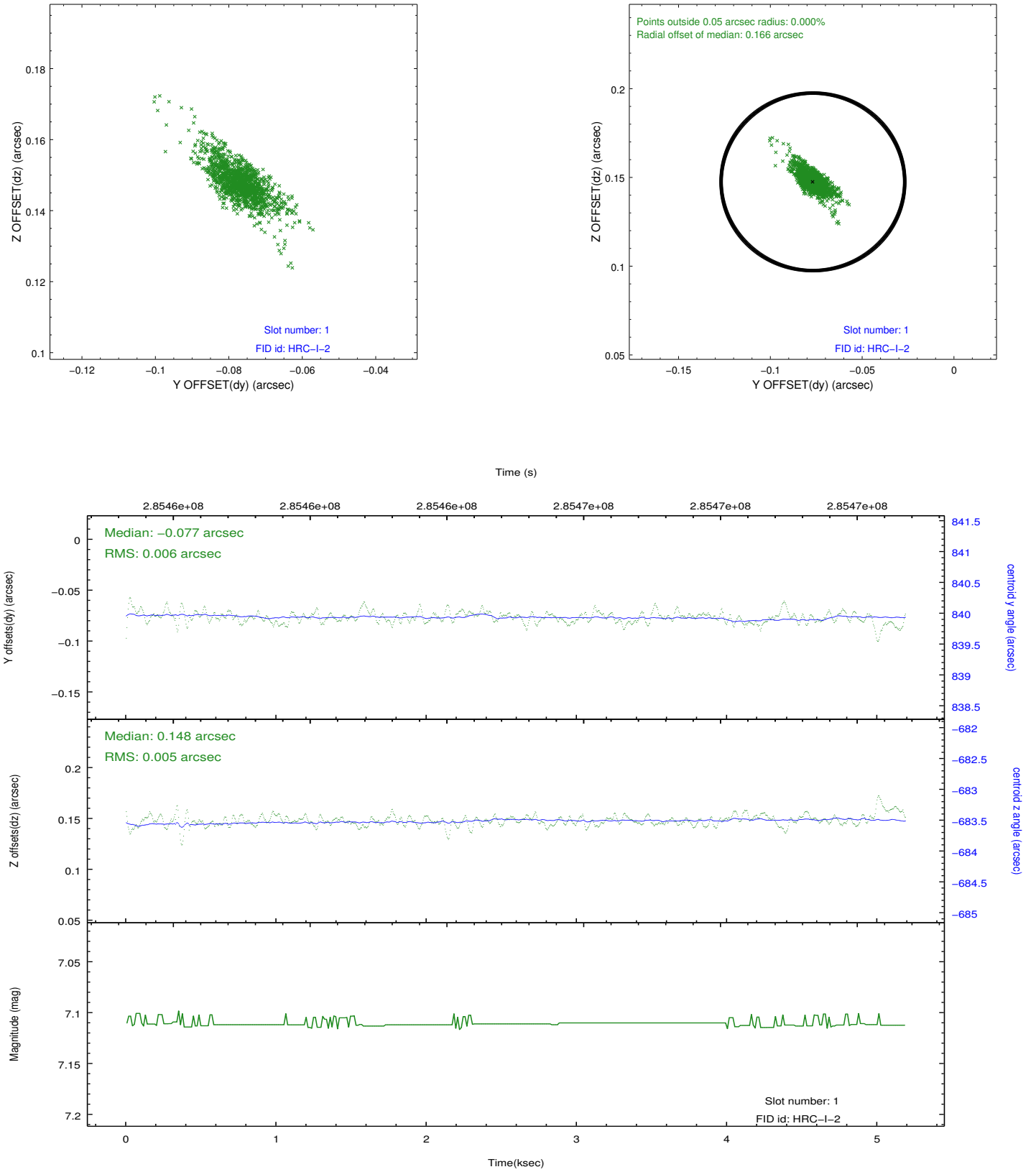


2.5 FID Slots

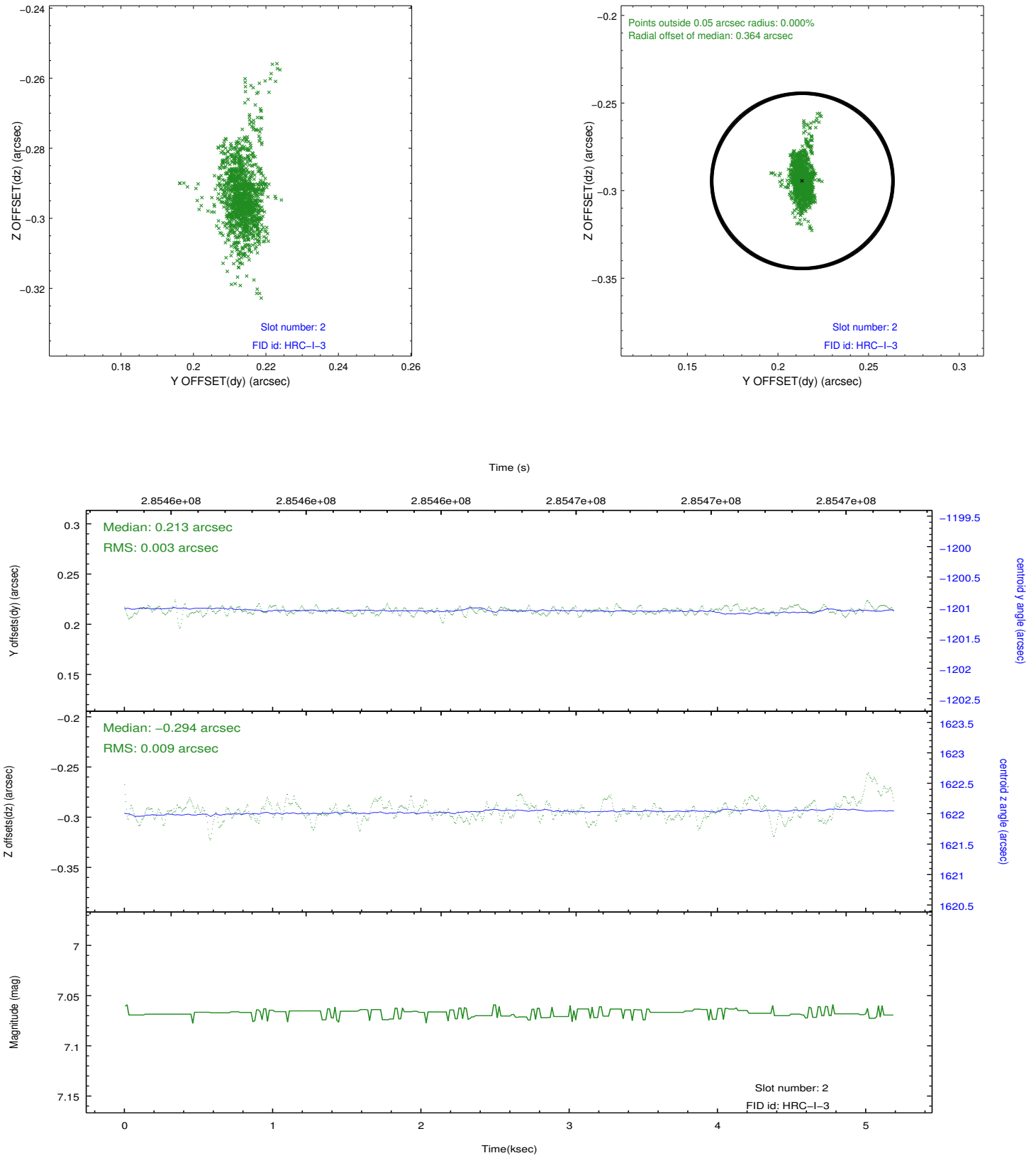
2.5.1 Slot 0



2.5.2 Slot 1



2.5.3 Slot 2



A Summary

A.1 Status

V&V Scientist	Jen Lauer
V&V Date (YYYY-MM-DD)	2012.08.14
V&V Edition	1
V&V Disposition and Status	OK
V&V Charge Time	5.18752524

A.2 Comments