

# V&V Reference Report

## L2 ASCDS Version : 8.4.4

Observation 8343 - L2 Version 5  
Chandra X-Ray Center

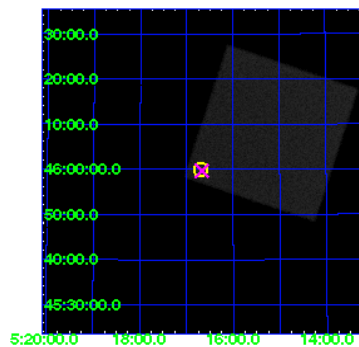
L2 Processing Date : Aug 11 2012

## Contents

<b>1</b>	<b>Front</b>	<b>2</b>
<b>2</b>	<b>OBI</b>	<b>3</b>
2.1	OBI . . . . .	3
2.1.1	Images . . . . .	3
2.1.2	Parameters . . . . .	4
2.1.3	Events . . . . .	4
2.2	Compared Parameters . . . . .	5
2.3	Aspect . . . . .	6
2.4	Star Slots . . . . .	9
2.4.1	Slot 3 . . . . .	9
2.4.2	Slot 4 . . . . .	10
2.4.3	Slot 5 . . . . .	11
2.4.4	Slot 6 . . . . .	12
2.4.5	Slot 7 . . . . .	13
2.5	FID Slots . . . . .	14
2.5.1	Slot 0 . . . . .	14
2.5.2	Slot 1 . . . . .	15
2.5.3	Slot 2 . . . . .	16
<b>A</b>	<b>Summary</b>	<b>17</b>
A.1	Status . . . . .	17
A.2	Comments . . . . .	17

# 1 Front

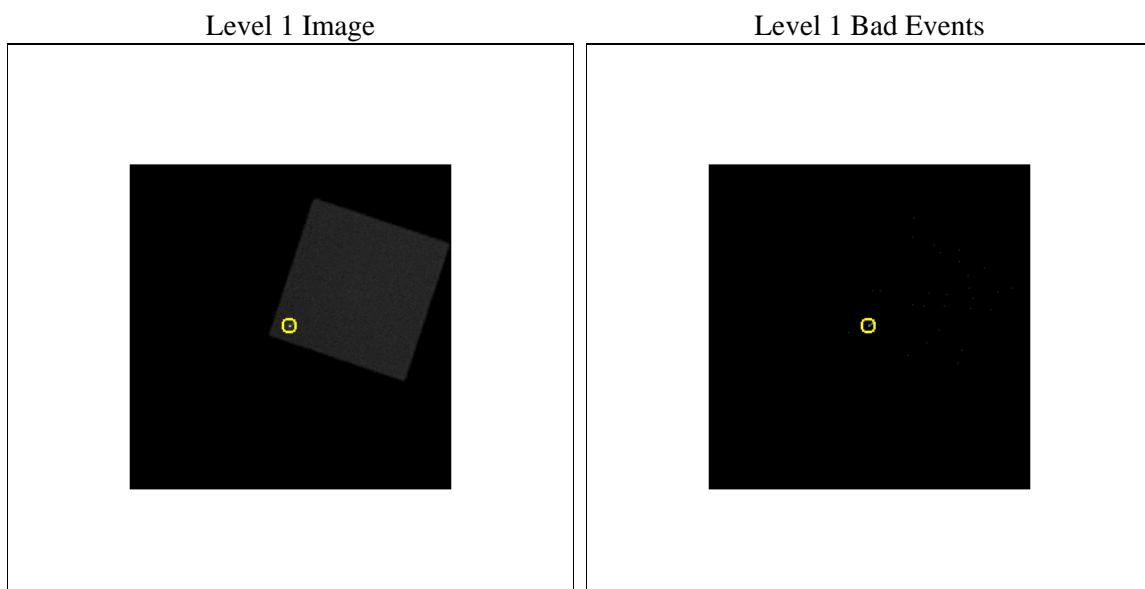
seq_num	290722	Sequence number
obs_id	8343	Observation id
title	Improving the De-Gap Corrections for the HRC-I	Proposal title
observer	Dr. CXC Calibration	Principal investigator
object	Capella	Source name
ra_targ	79.1725	Observer's specified target RA [deg]
dec_targ	45.998	Observer's specified target Dec [deg]
ra_nom	79.167933491949	Nominal RA [deg]
dec_nom	45.995267007303	Nominal Dec [deg]
roll_nom	243.39147353634	Nominal Roll [deg]
revision	5	Processing version of data
ontime	5292.3315008879	[s]
livetime	5236.5468172589	Ontime multiplied by DTCOR
l2events	377847	Number of level 2 events



## 2 OBI

### 2.1 OBI

#### 2.1.1 Images



### 2.1.2 Parameters

obi_num	0	Obi number	sched_exp_time	5105.000000	[s] Scheduled observation exposure time
ascdsver	8.4.5	Processing system revision	ontime	5292.3315008879	[s]
caldsver	4.5.1.1	&#160	l1events	542212	Number of level 1 events
date	2012-08-11T15:56:42	Date and time of file creation			
revision	5	Processing version of data			

### 2.1.3 Events

#### Level 1 Events

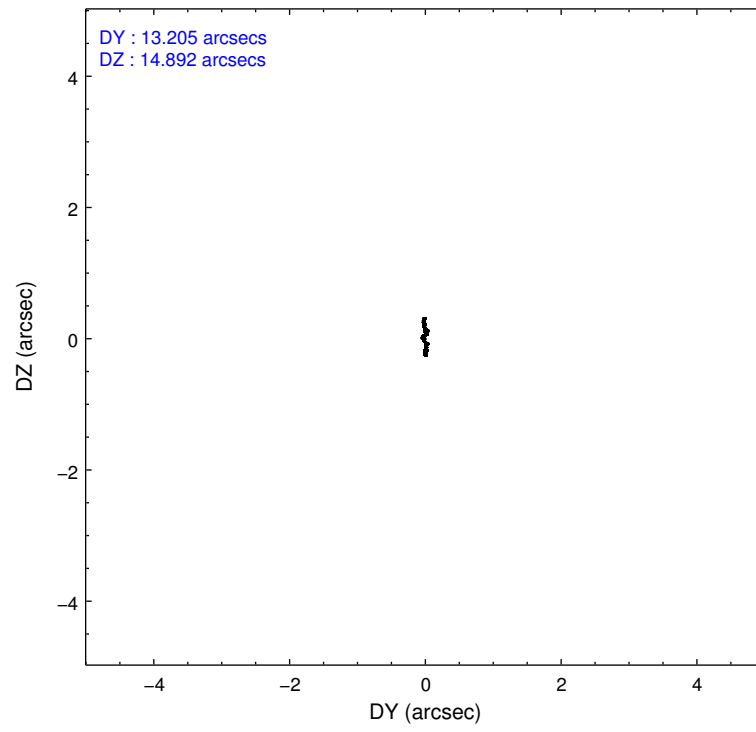
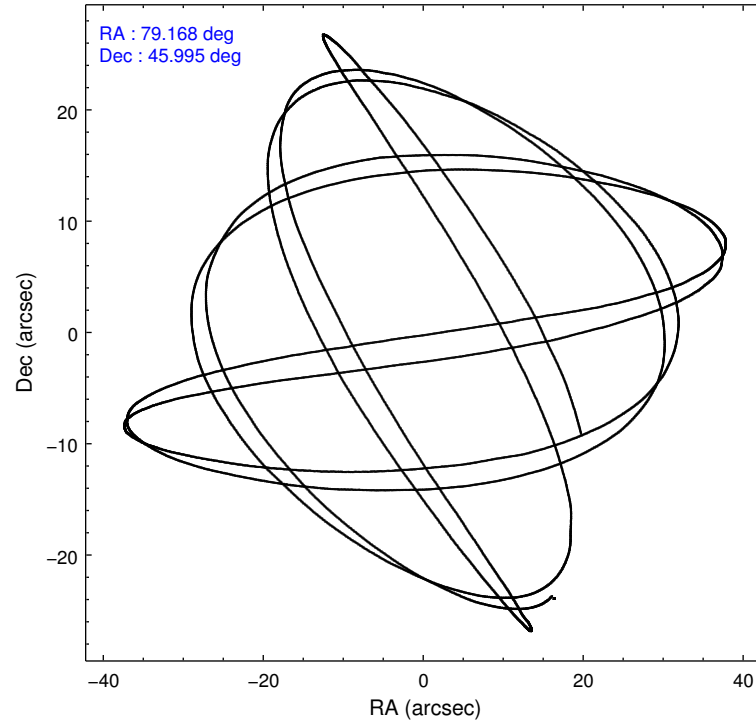
	<b>segment 0</b>
level 1 events	542212
rejected events	30936
rejected %	5%

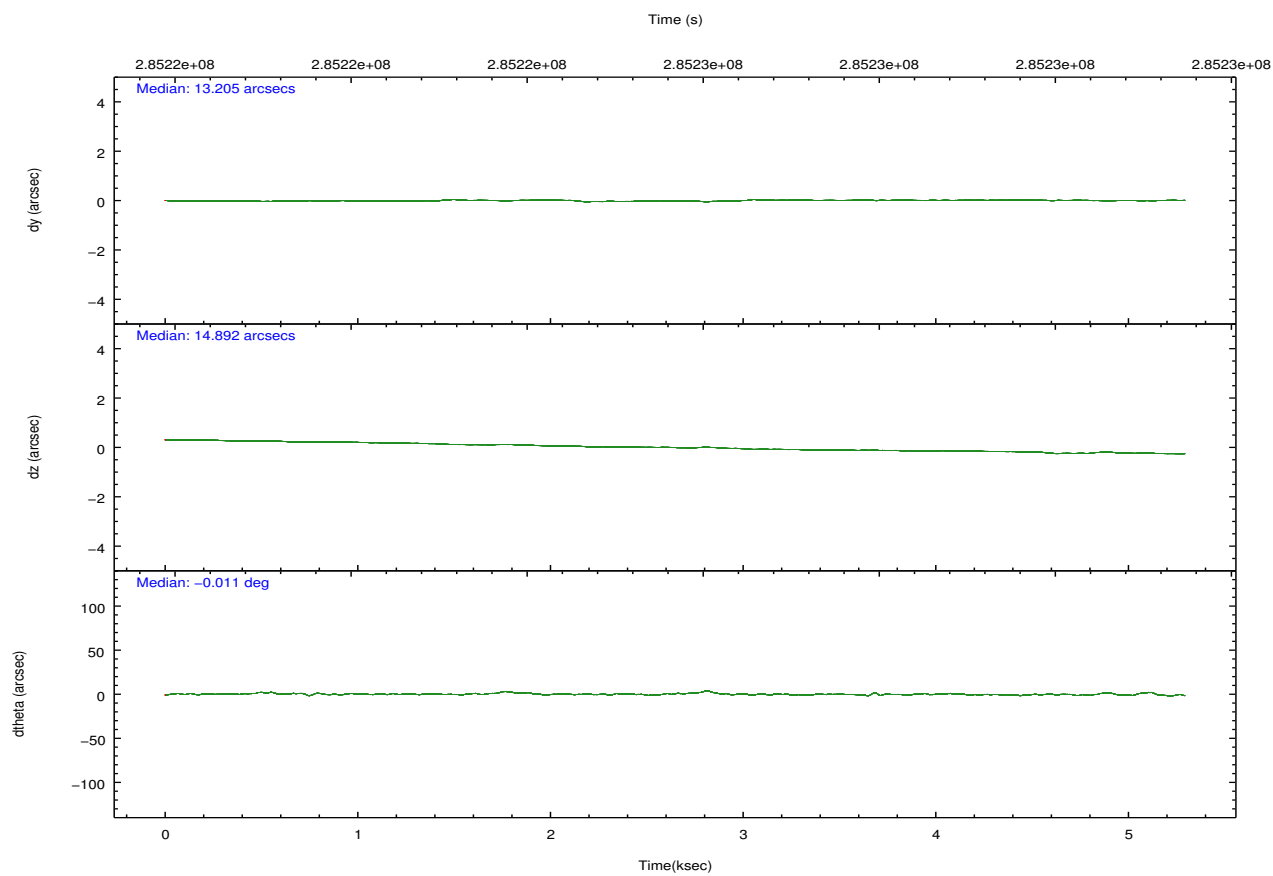
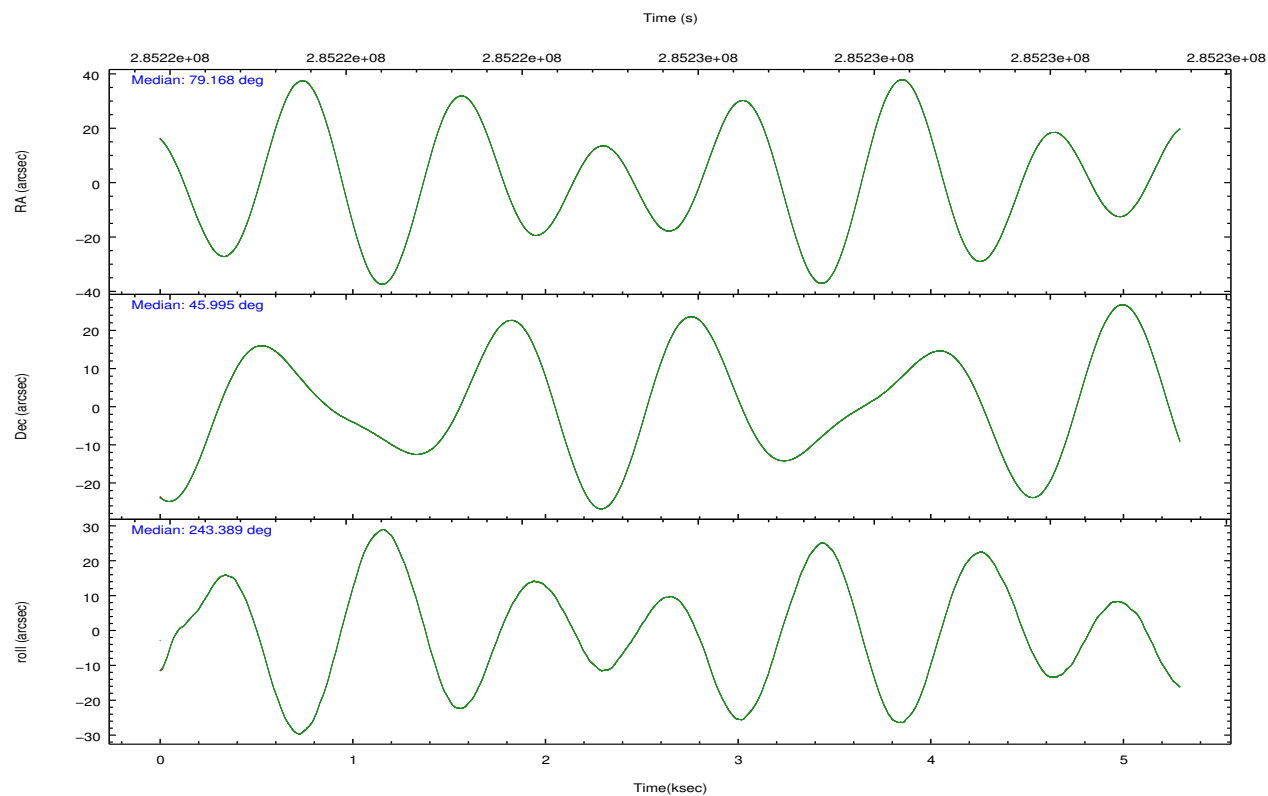


## 2.2 Compared Parameters

Parameter	Planned	Actual	Parameter	Planned	Actual
Instrument	HRC	HRC	Obspar format version number	7	7
Detector	HRC-I	HRC-I	Obspar file type	PREDICTED	ACTUAL
Grating	NONE	NONE	Obspar update status	NONE	UPDATED
Data mode	OBSERVING	OBSERVING			
Observation mode	POINTING	POINTING			
[deg] Pointing RA	79.164740	79.16793349194887			
[deg] Pointing Dec	46.022285	45.99526700730315			
[deg] Pointing Roll	243.489253	243.3914735363448			
[mm] SIM focus pos	-1.040293	-1.038866356238299			
[mm] SIM defocus	0	0.001426264420575141			
[mm] SIM translation stage pos	177.985494	177.9959231433371			
[mm] SIM translation stage offset	-51	-51.01043425173552			
[s] Observation start time (MET)	285223389.184000	285223013.10068			
Observation start date	2007-01-15T04:42:04	2007-01-15T04:36:53			
[s] Observation end time (MET)	285228494.184000	285228628.05095			
Observation end date	2007-01-15T06:07:09	2007-01-15T06:10:28			

## 2.3 Aspect



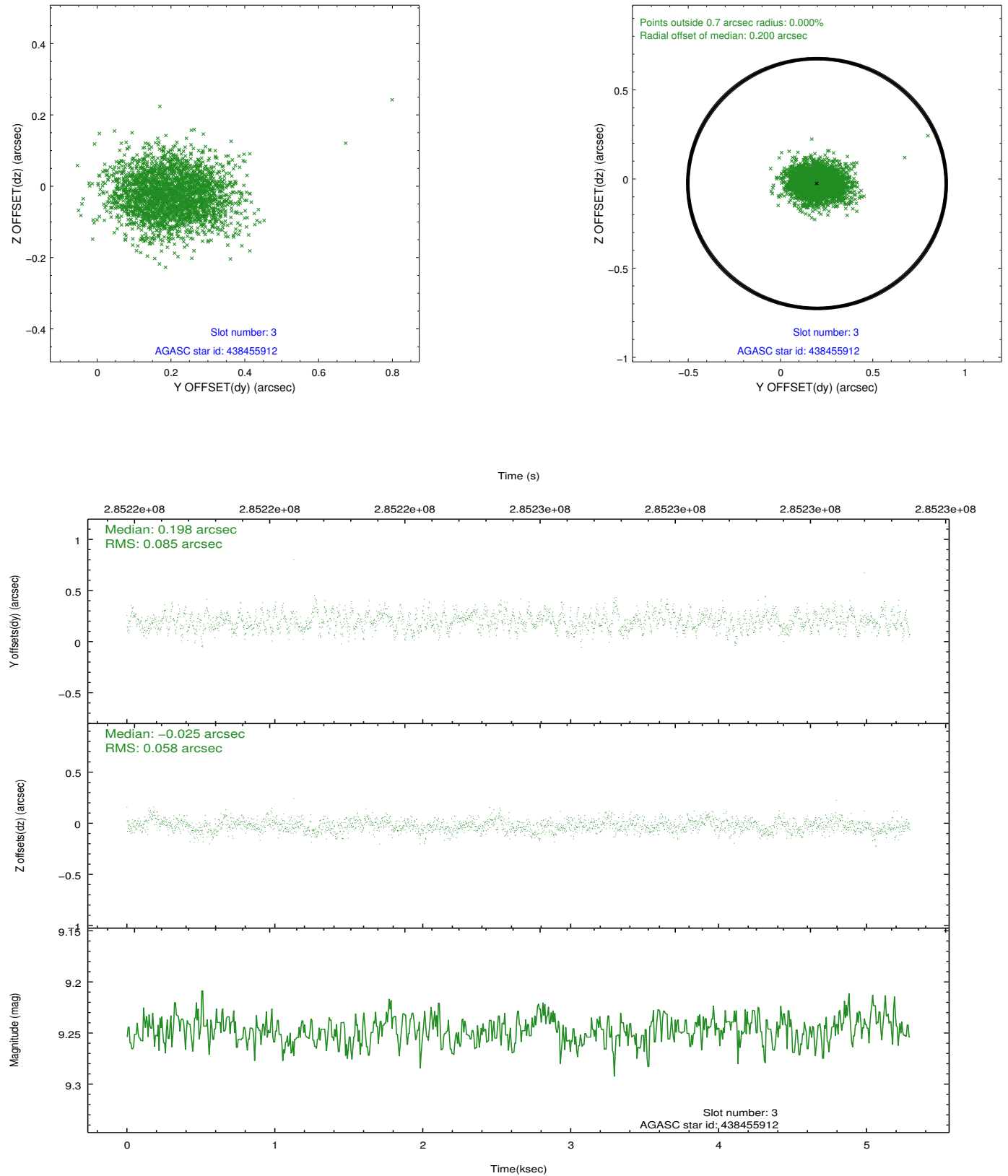


### Slot Statistics

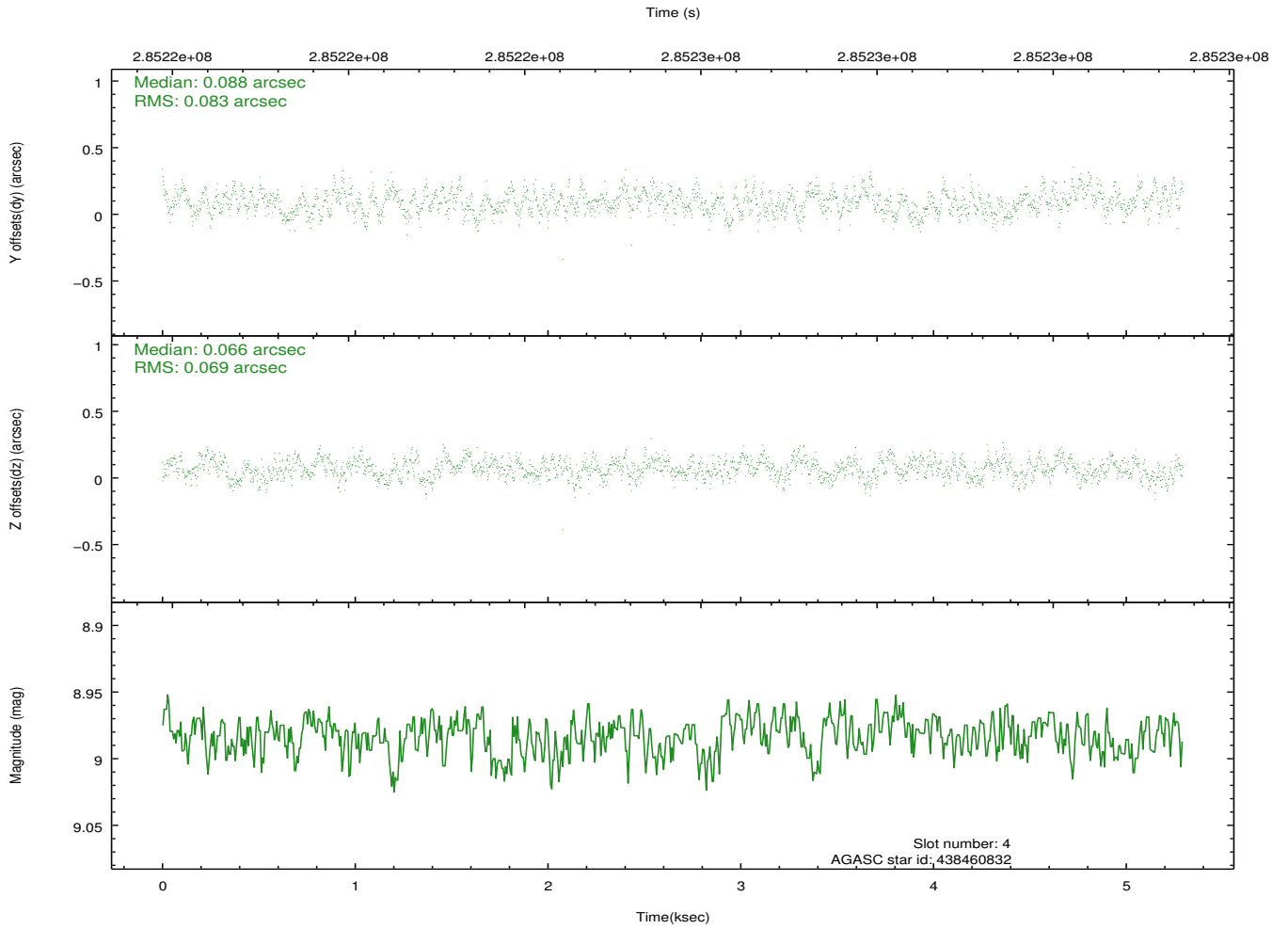
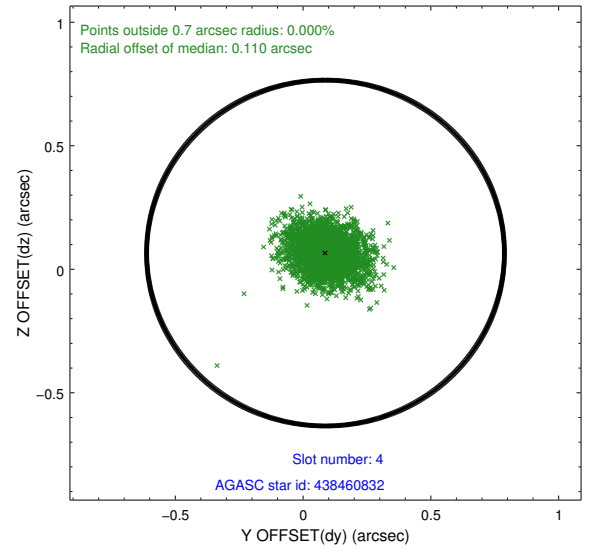
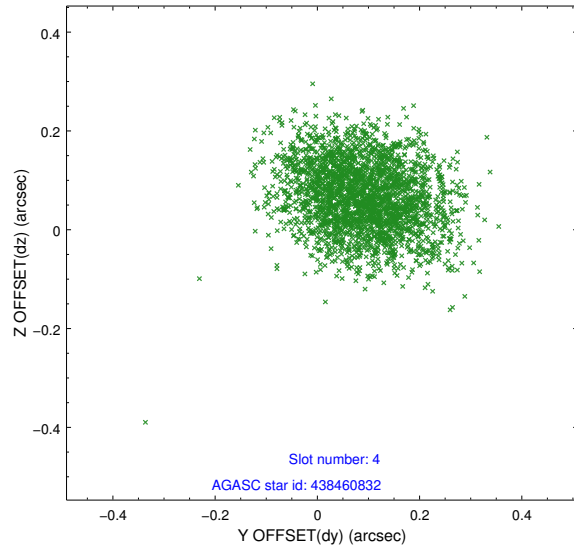
slot	status	id	mag	n_pts	med_dy	med_dz	dr1	dr2	ra	dec	mean_y	mean_z
0	FID	HRC-I-1	6.90	1291	0.107	-1.414	0.013	0.021	0.000000	0.000000	-768.09	-2352.39
1	FID	HRC-I-2	7.00	1292	-0.312	0.572	0.009	0.022	0.000000	0.000000	844.55	-2354.28
2	FID	HRC-I-3	7.14	1291	0.321	0.737	0.008	0.015	0.000000	0.000000	-1195.46	-48.76
3	GUIDE	438455912	9.25	2582	0.198	-0.025	0.108	0.175	78.251946	45.690923	2081.38	-1526.96
4	GUIDE	438460832	8.98	2581	0.088	0.066	0.114	0.183	78.414614	45.554782	2344.03	-944.73
5	GUIDE	440140240	9.99	2583	-0.218	0.104	0.126	0.211	78.889349	46.726437	-1964.60	-1740.17
6	GUIDE	440163960	8.87	2579	-0.057	-0.032	0.088	0.149	79.298370	45.827072	478.80	613.35
7	GUIDE	440163560	9.55	2577	-0.004	-0.105	0.141	0.230	79.359509	46.135242	-580.35	253.54

## 2.4 Star Slots

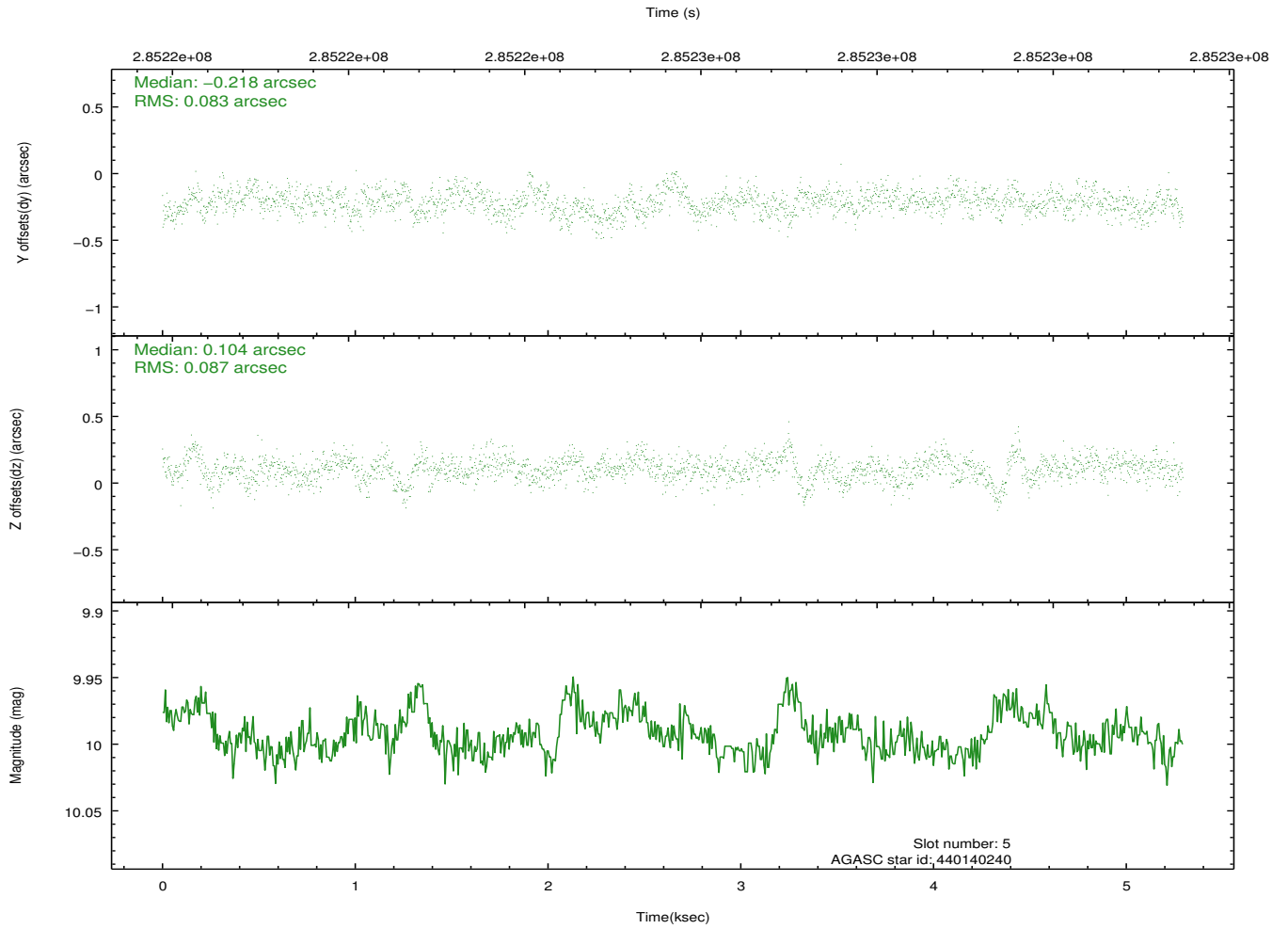
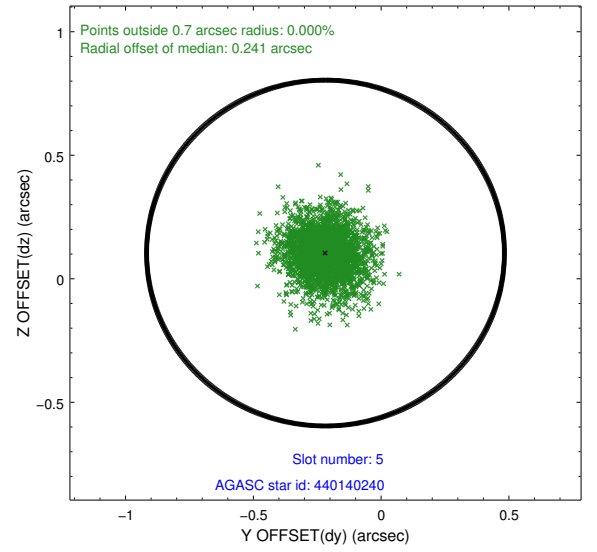
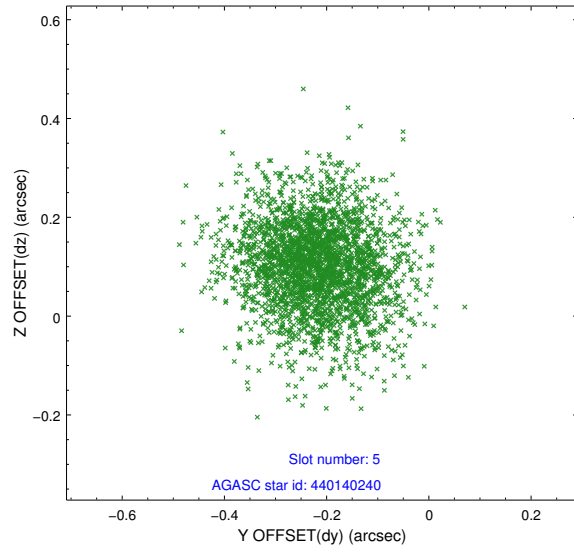
### 2.4.1 Slot 3



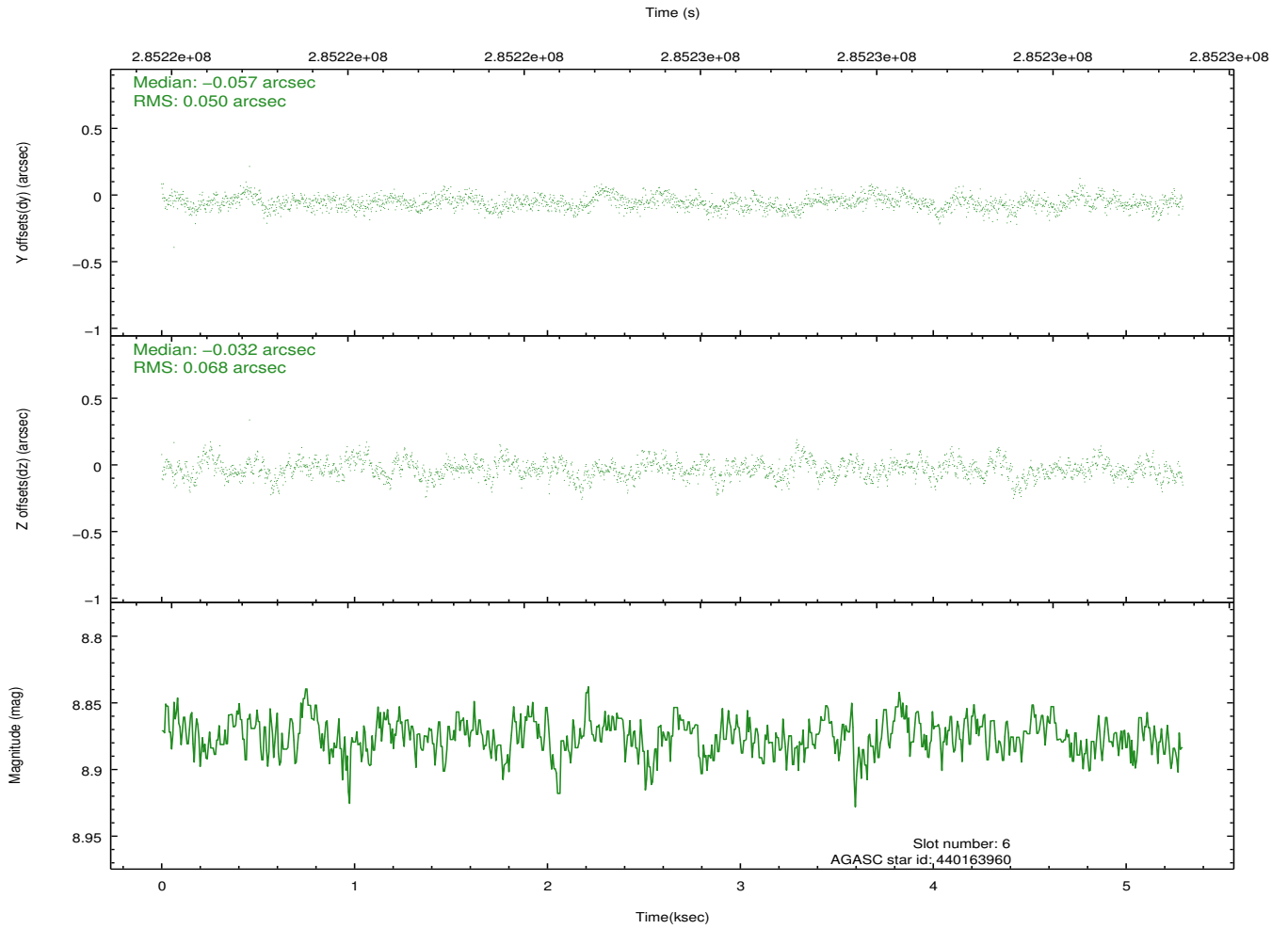
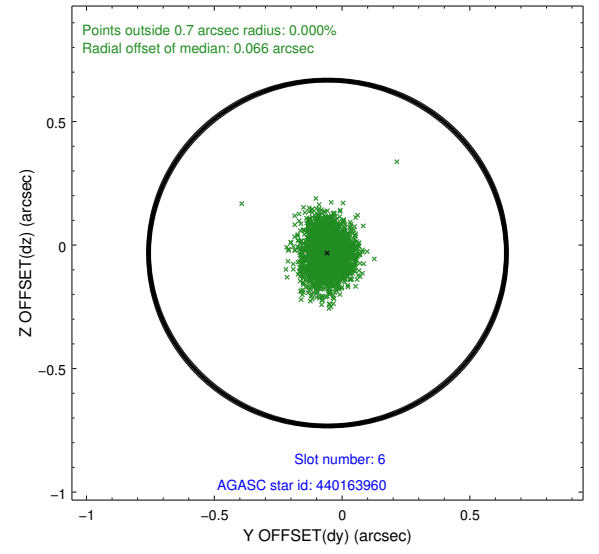
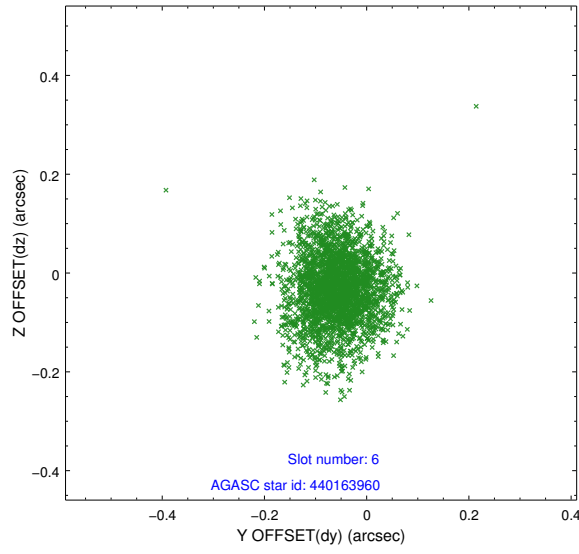
## 2.4.2 Slot 4



### 2.4.3 Slot 5

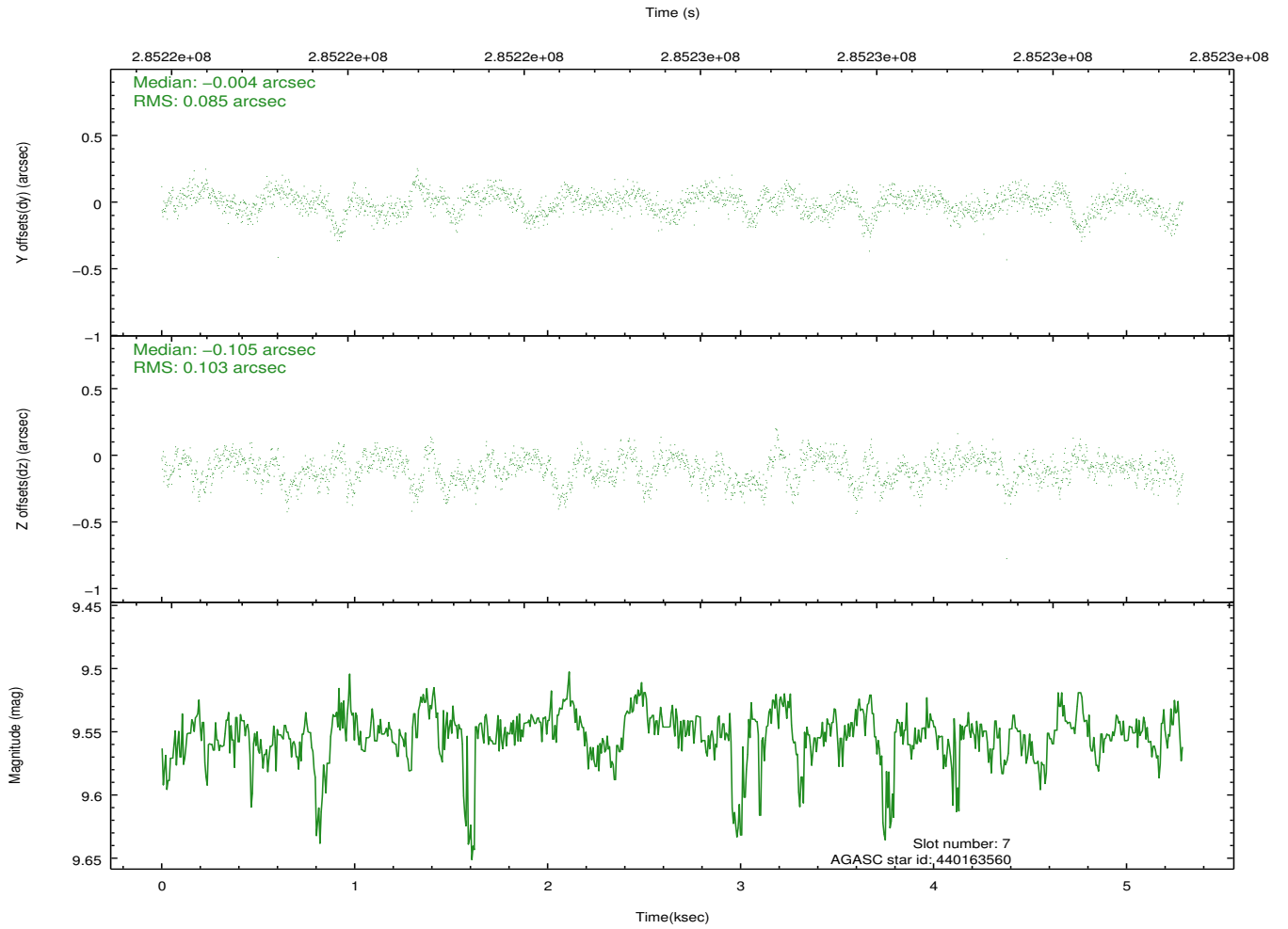
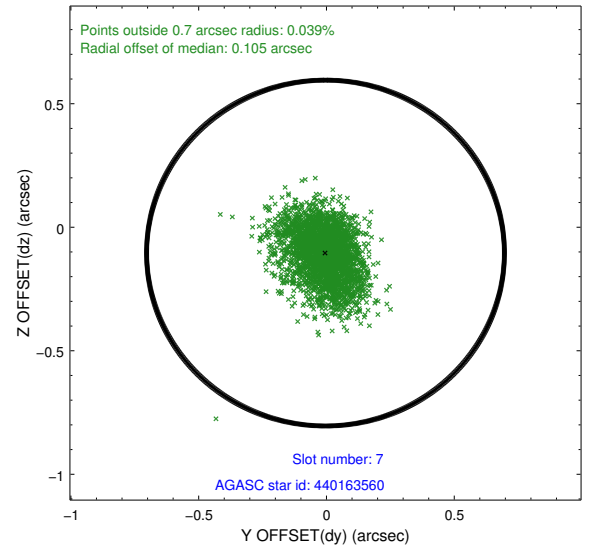
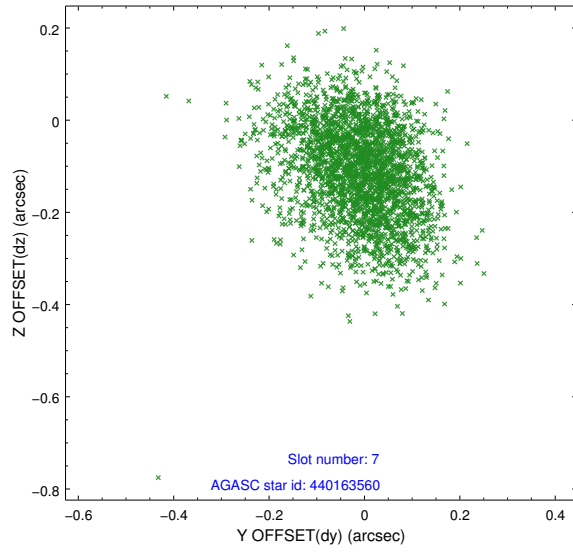


## 2.4.4 Slot 6



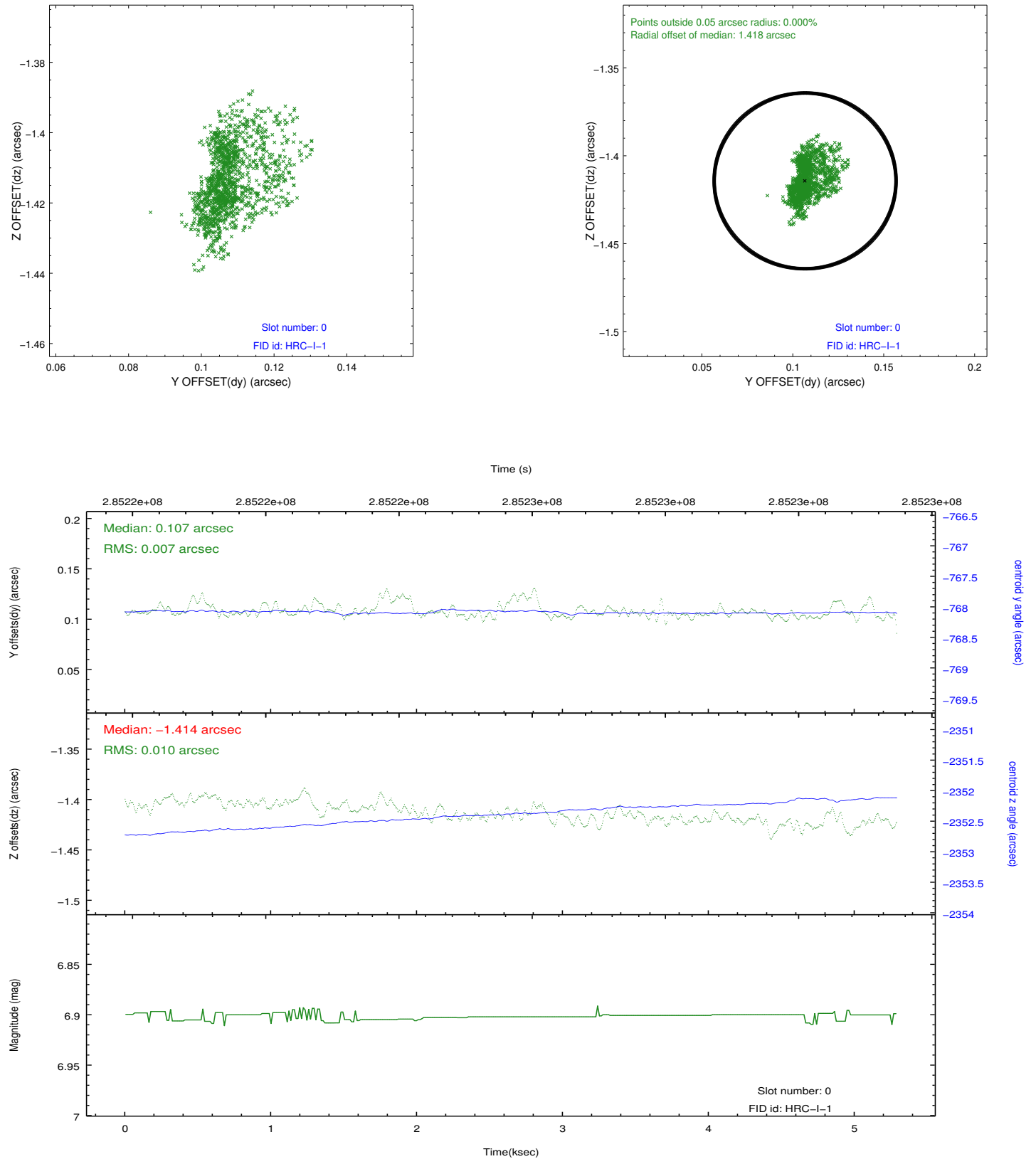


## 2.4.5 Slot 7

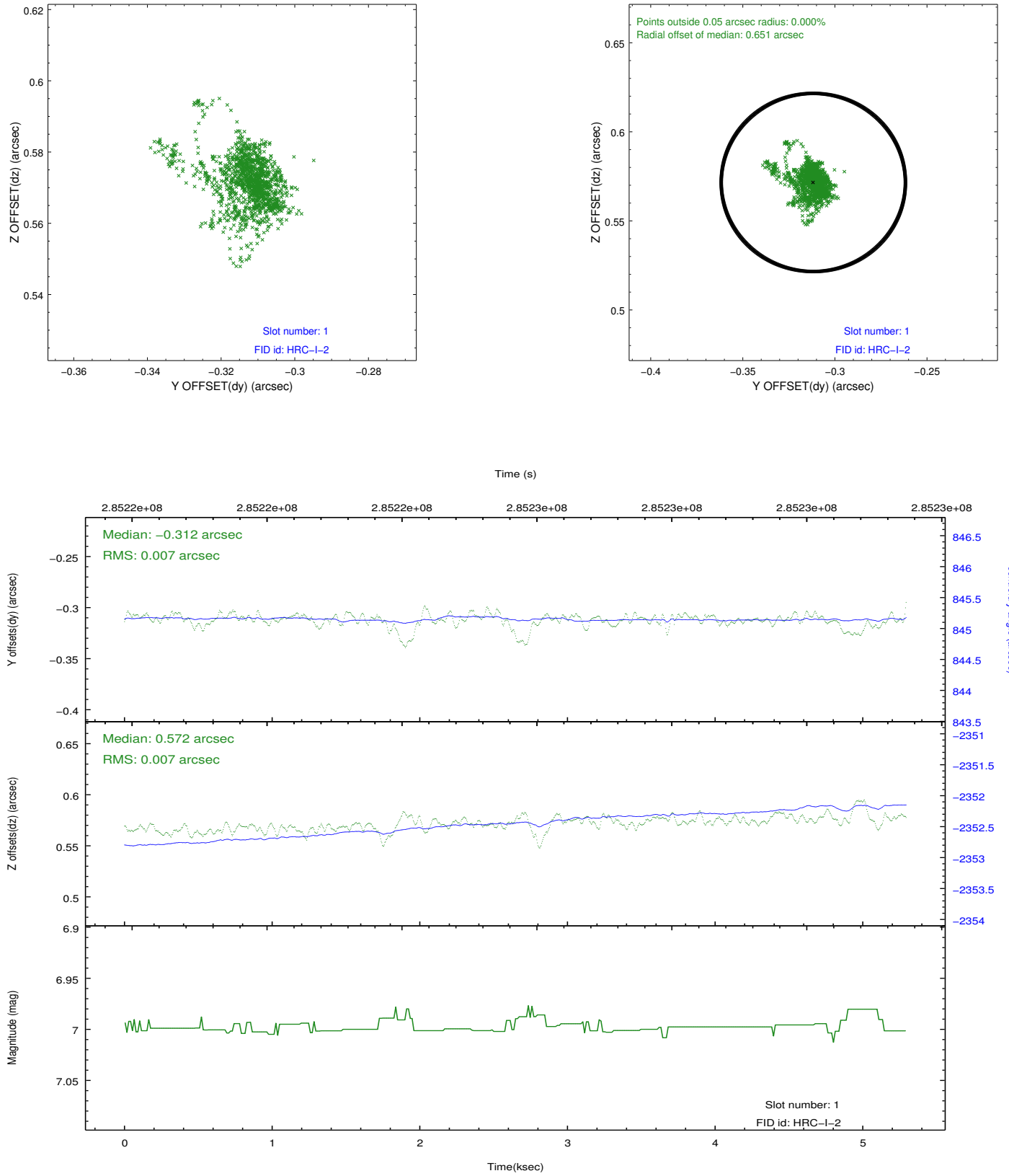


## 2.5 FID Slots

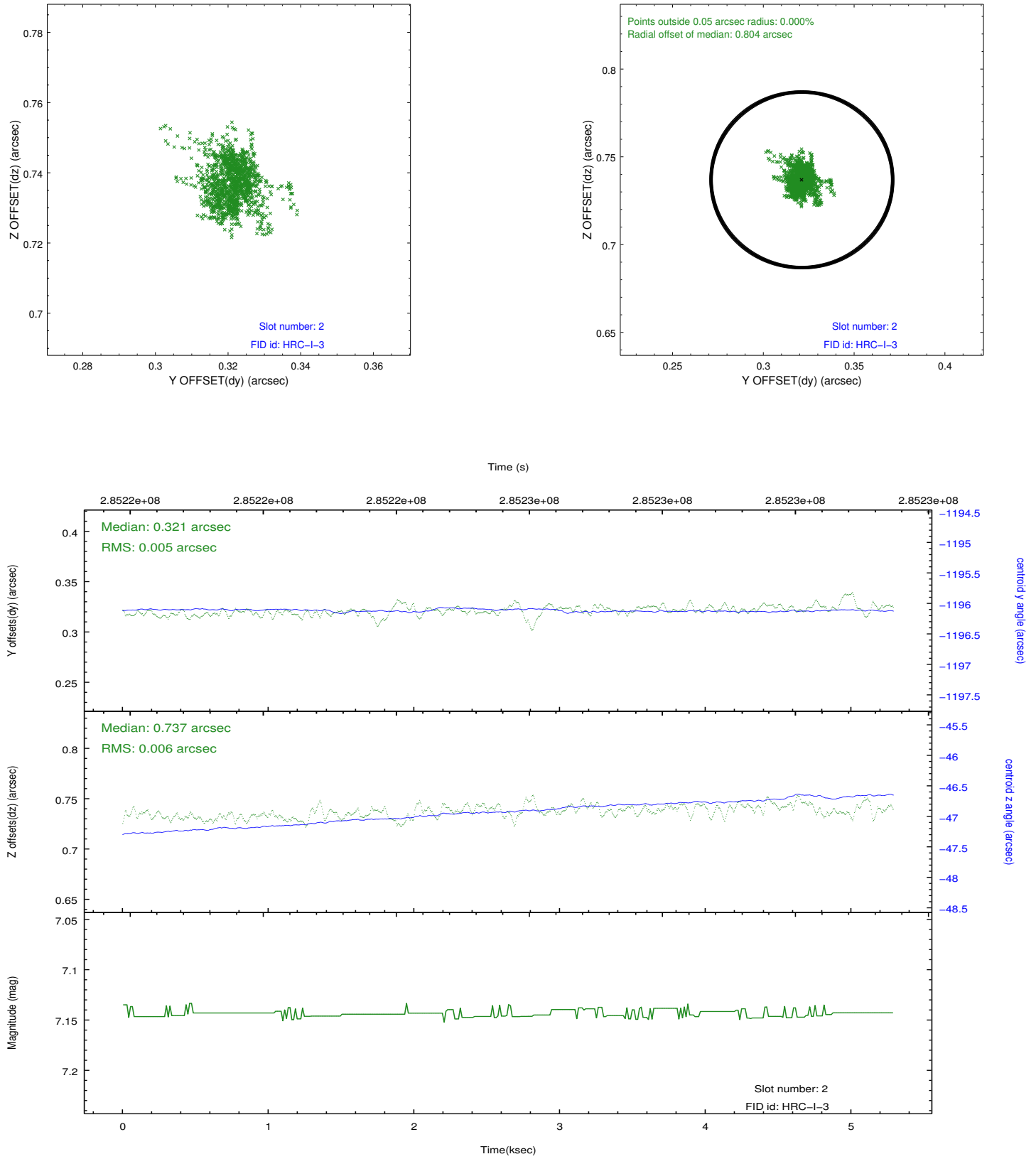
### 2.5.1 Slot 0



## 2.5.2 Slot 1



### 2.5.3 Slot 2



# A Summary

## A.1 Status

V&V Scientist	Jen Lauer
V&V Date (YYYY-MM-DD)	2012.08.14
V&V Edition	1
V&V Disposition and Status	OK
V&V Charge Time	5.2923315

## A.2 Comments

Large offsets in all three fidlights are due to the position of the target and aimpoint near the corner of the chip, and are expected in this instance.