

# V&V Reference Report

## L2 ASCDS Version : 8.4.4

Observation 8314 - L2 Version 4  
Chandra X-Ray Center

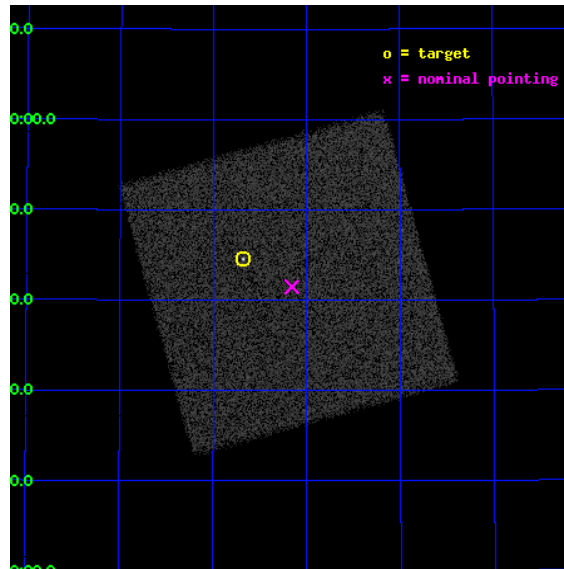
L2 Processing Date : Aug 11 2012

## Contents

<b>1</b>	<b>Front</b>	<b>2</b>
<b>2</b>	<b>OBI</b>	<b>3</b>
2.1	OBI . . . . .	3
2.1.1	Images . . . . .	3
2.1.2	Parameters . . . . .	4
2.1.3	Events . . . . .	4
2.2	Compared Parameters . . . . .	5
2.3	Aspect . . . . .	6
2.4	Star Slots . . . . .	9
2.4.1	Slot 3 . . . . .	9
2.4.2	Slot 4 . . . . .	10
2.4.3	Slot 5 . . . . .	11
2.4.4	Slot 6 . . . . .	12
2.4.5	Slot 7 . . . . .	13
2.5	FID Slots . . . . .	14
2.5.1	Slot 0 . . . . .	14
2.5.2	Slot 1 . . . . .	15
2.5.3	Slot 2 . . . . .	16
<b>A</b>	<b>Summary</b>	<b>17</b>
A.1	Status . . . . .	17
A.2	Comments . . . . .	17

# 1 Front

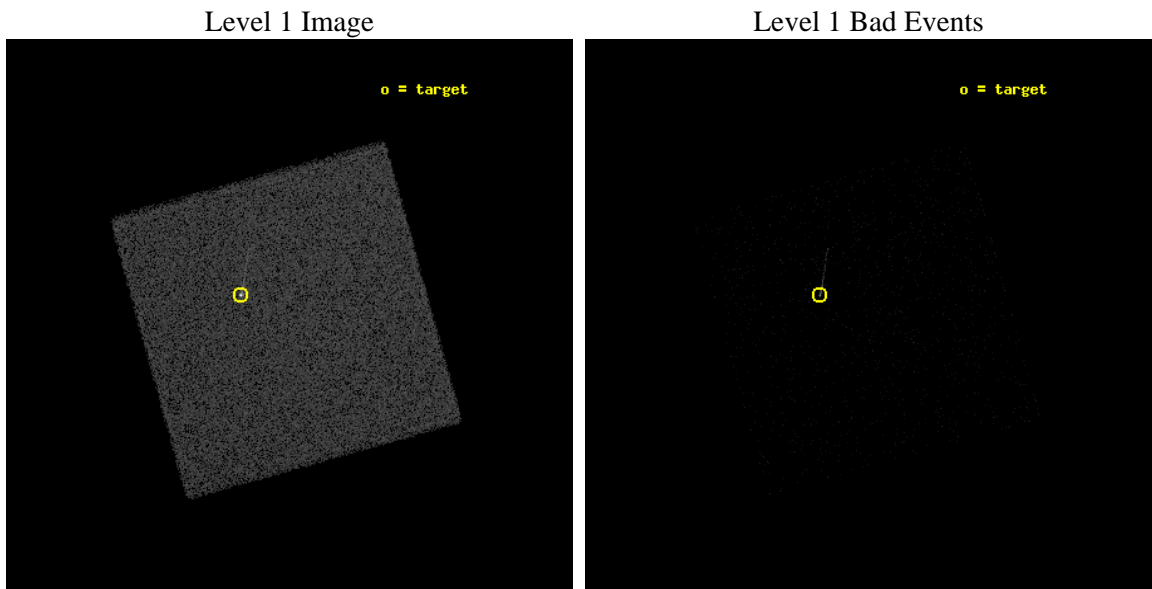
seq_num	290693	Sequence number
obs_id	8314	Observation id
title	AO8 Calibration Observations to Monitor the Spatial Variations in the HRC-I Gain	Proposal title
observer	Dr. CXC Calibration	Principal investigator
object	ArLac	Source name
ra_targ	332.17	Observer's specified target RA [deg]
dec_targ	45.742306	Observer's specified target Dec [deg]
ra_nom	332.03973496276	Nominal RA [deg]
dec_nom	45.69151220273	Nominal Dec [deg]
roll_nom	209.45504214157	Nominal Roll [deg]
revision	4	Processing version of data
ontime	1175.9313066006	[s]
livetime	1163.7271869145	Ontime multiplied by DTCOR
l2events	71741	Number of level 2 events



## 2 OBI

### 2.1 OBI

#### 2.1.1 Images



### 2.1.2 Parameters

obi_num	0	Obi number	sched_exp_time	1000.000000	[s] Scheduled observation exposure time
ascdsver	8.4.5	Processing system revision	ontime	1175.9313066006	[s]
caldbver	4.5.1.1	&#160	l1events	134245	Number of level 1 events
date	2012-08-12T02:35:26	Date and time of file creation			
revision	4	Processing version of data			

### 2.1.3 Events

#### Level 1 Events

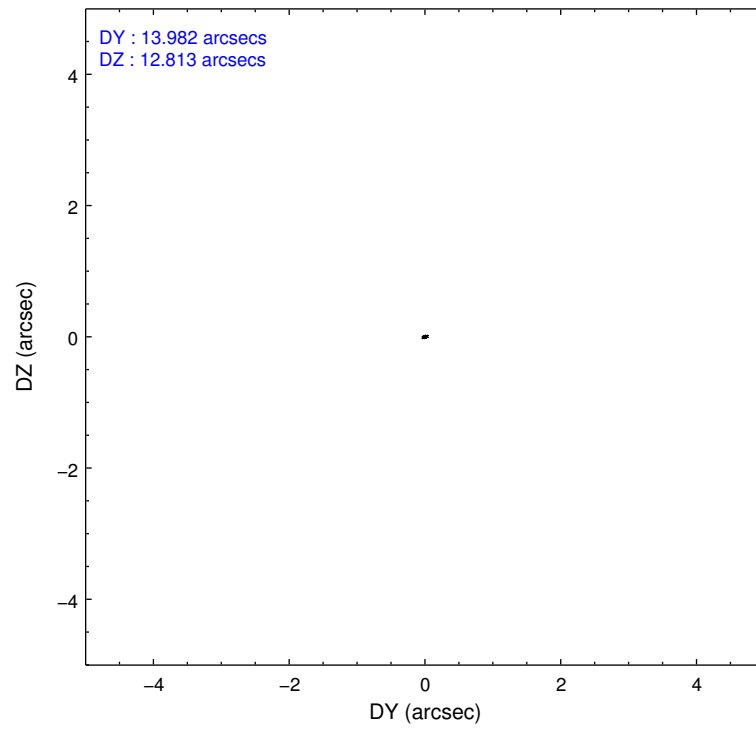
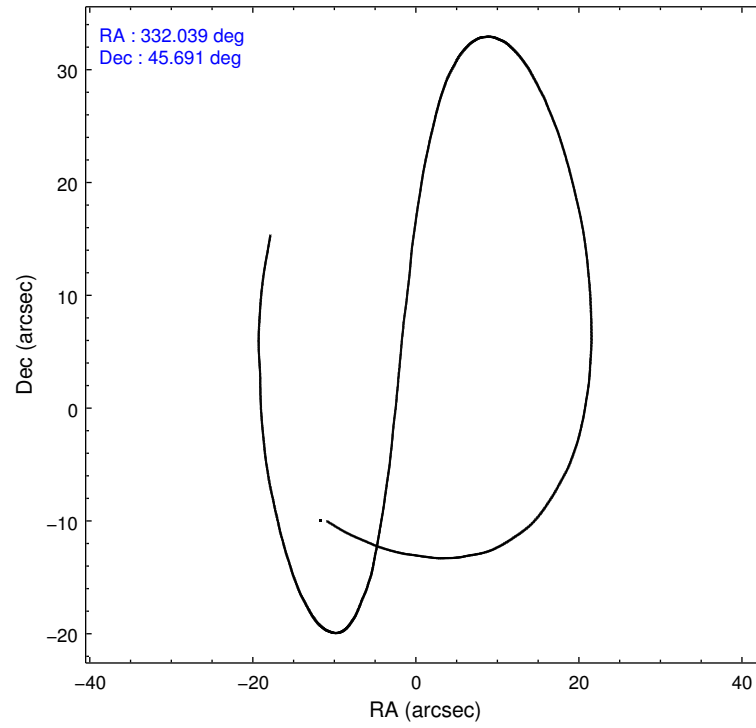
	<b>segment 0</b>
level 1 events	134245
rejected events	29547
rejected %	22%

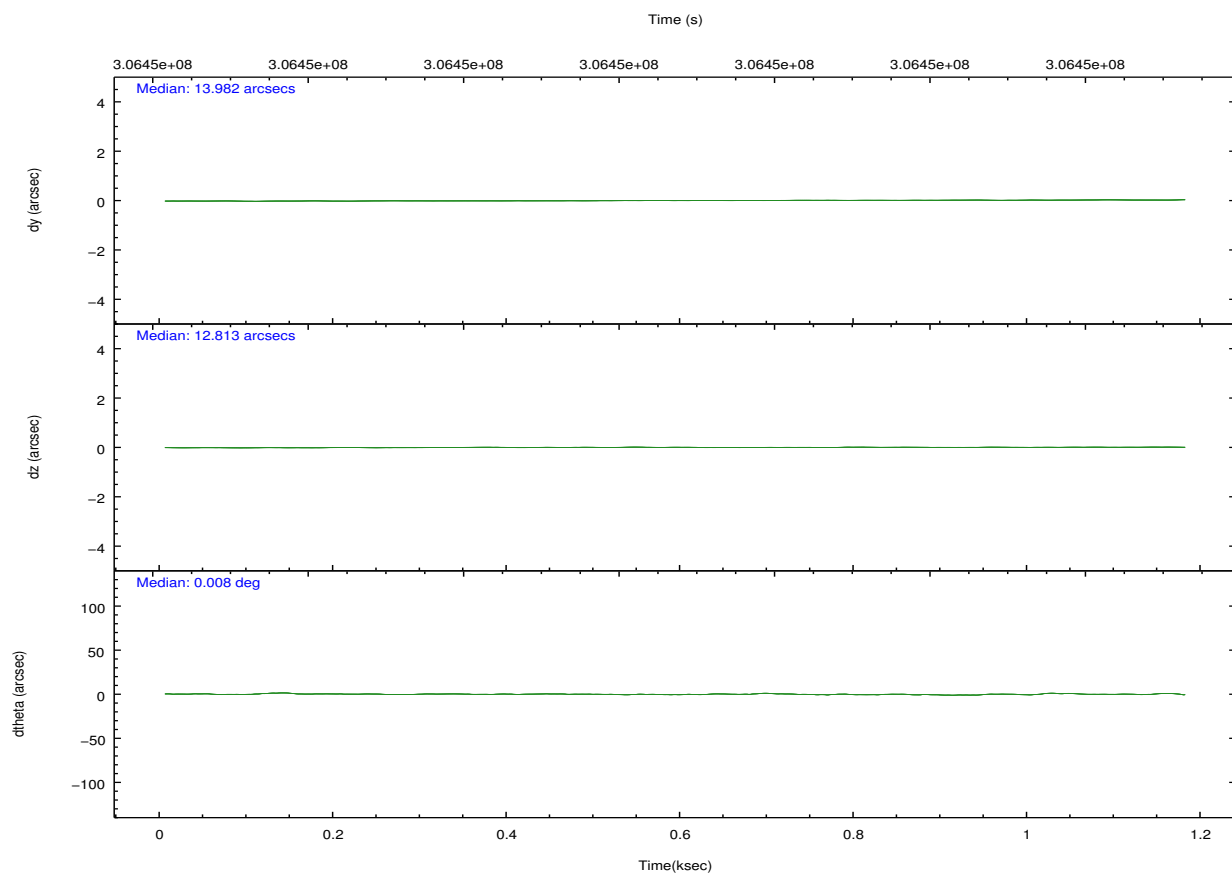
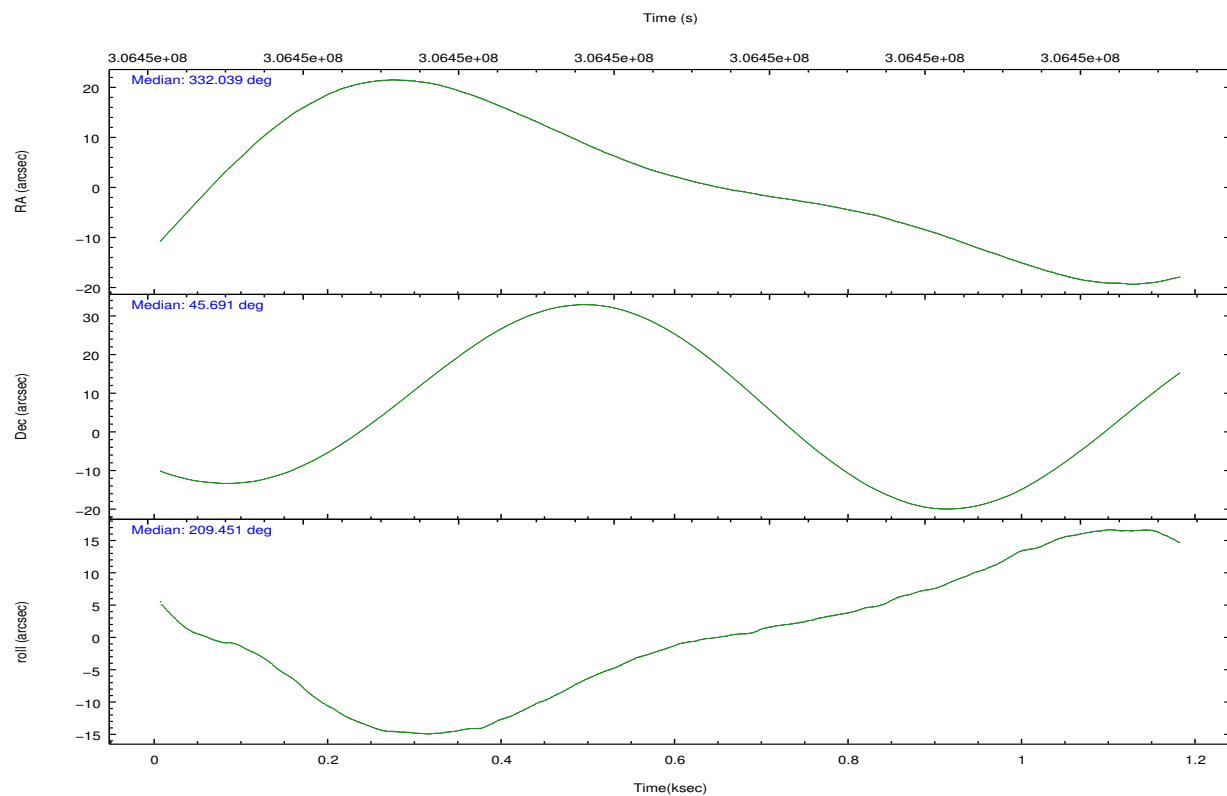
## 2.2 Compared Parameters

Parameter	Planned	Actual
Instrument	HRC	HRC
Detector	HRC-I	HRC-I
Grating	NONE	NONE
Data mode	OBSERVING	OBSERVING
Observation mode	POINTING	POINTING
[deg] Pointing RA	332.058377	332.0397349627576
[deg] Pointing Dec	45.716218	45.69151220273022
[deg] Pointing Roll	209.537219	209.4550421415699
[mm] SIM focus pos	-1.040293	-1.038866356238299
[mm] SIM defocus	0	0.001426264420575141
[mm] SIM translation stage pos	126.985494	126.9854943052878
[mm] SIM translation stage offset	0	-5.413686238853188e-06
[s] Observation start time (MET)	306448662.184000	306448286.17685
Observation start date	2007-09-17T20:36:37	2007-09-17T20:31:26
[s] Observation end time (MET)	306449662.184000	306449796.51442
Observation end date	2007-09-17T20:53:17	2007-09-17T20:56:36

Parameter	Planned	Actual
Obspar format version number	7	7
Obspar file type	PREDICTED	ACTUAL
Obspar update status	NONE	UPDATED

## 2.3 Aspect





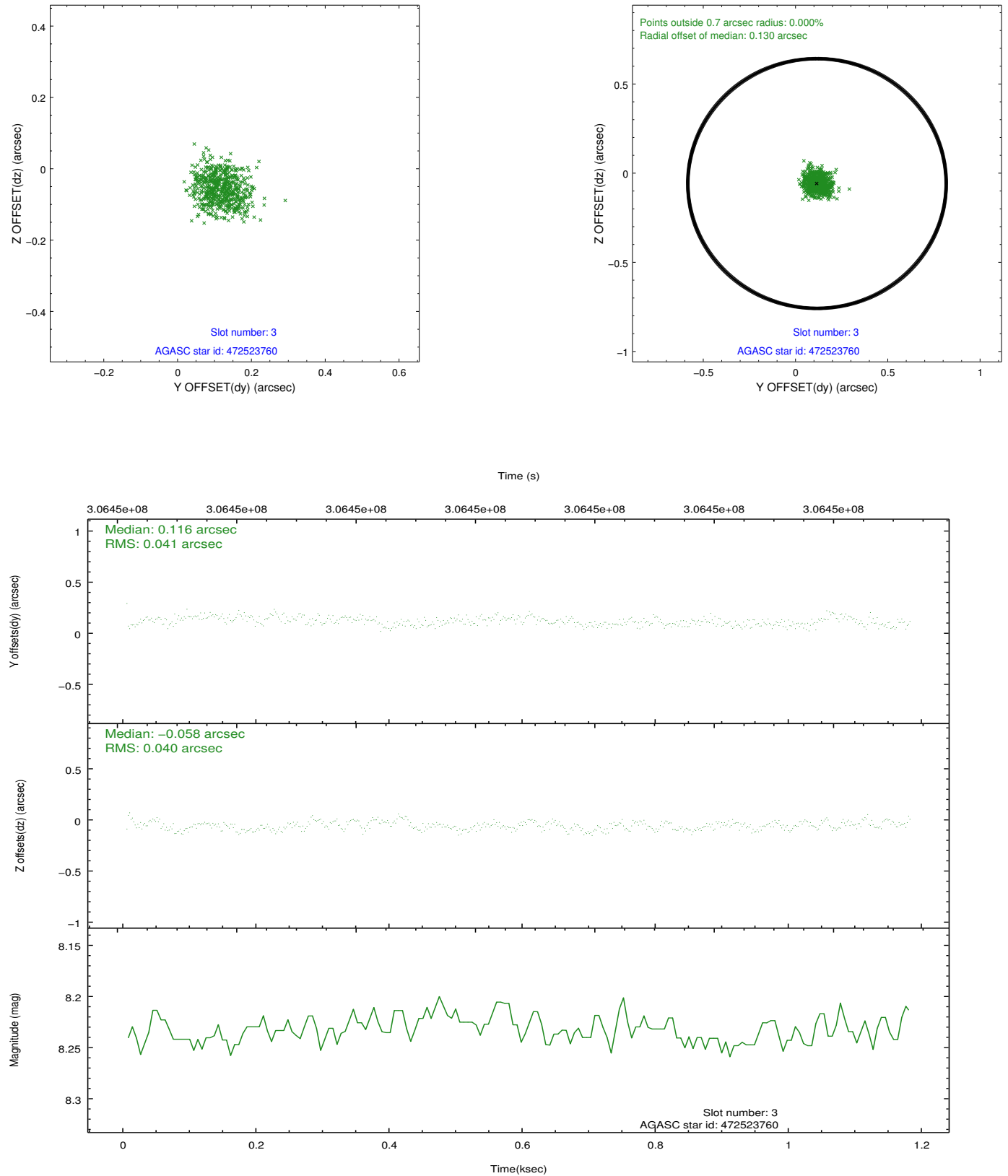
### Slot Statistics

slot	status	id	mag	n_pts	med_dy	med_dz	dr1	dr2	ra	dec	mean_y	mean_z
0	FID	HRC-I-1	6.99	287	-0.063	0.029	0.007	0.012	0.000000	0.000000	-769.82	-1300.85
1	FID	HRC-I-2	7.02	287	0.247	-0.161	0.005	0.010	0.000000	0.000000	840.44	-1307.14
2	FID	HRC-I-3	7.07	287	-0.065	0.042	0.006	0.011	0.000000	0.000000	-1195.38	999.17
3	GUIDE	472523760	8.23	575	0.116	-0.058	0.063	0.094	331.645363	45.403260	1461.95	460.03
4	GUIDE	472533912	9.14	575	-0.023	0.172	0.137	0.236	331.791136	46.368695	-578.90	-2374.20
5	GUIDE	472651904	6.71	575	-0.026	-0.167	0.074	0.118	332.170077	45.742257	-291.94	48.53
6	GUIDE	472655152	9.42	575	0.080	0.004	0.124	0.196	332.504239	45.862991	-1235.54	85.46
7	GUIDE	472527720	6.99	574	-0.148	0.044	0.070	0.127	331.460205	45.112509	2387.93	1133.89

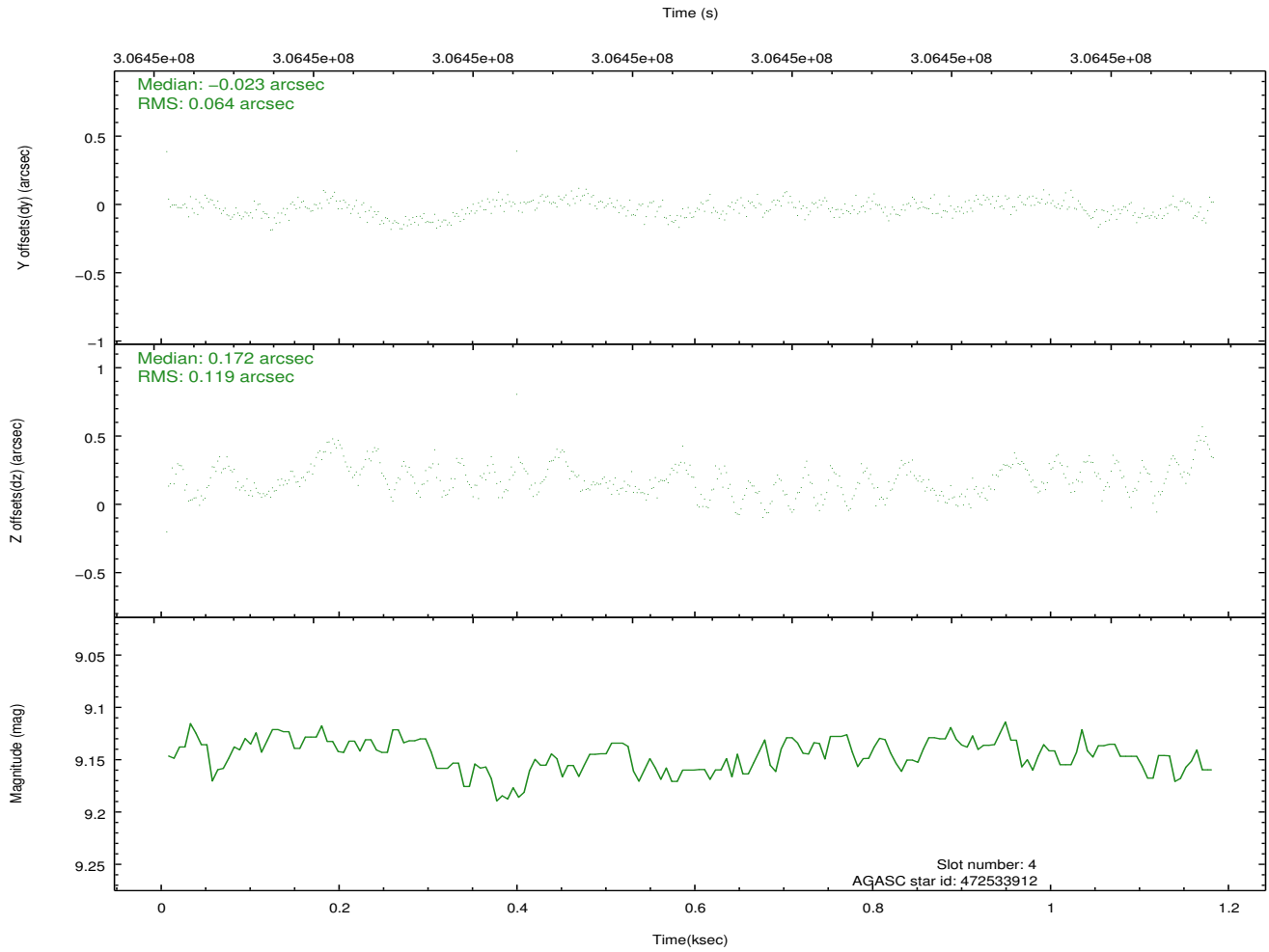
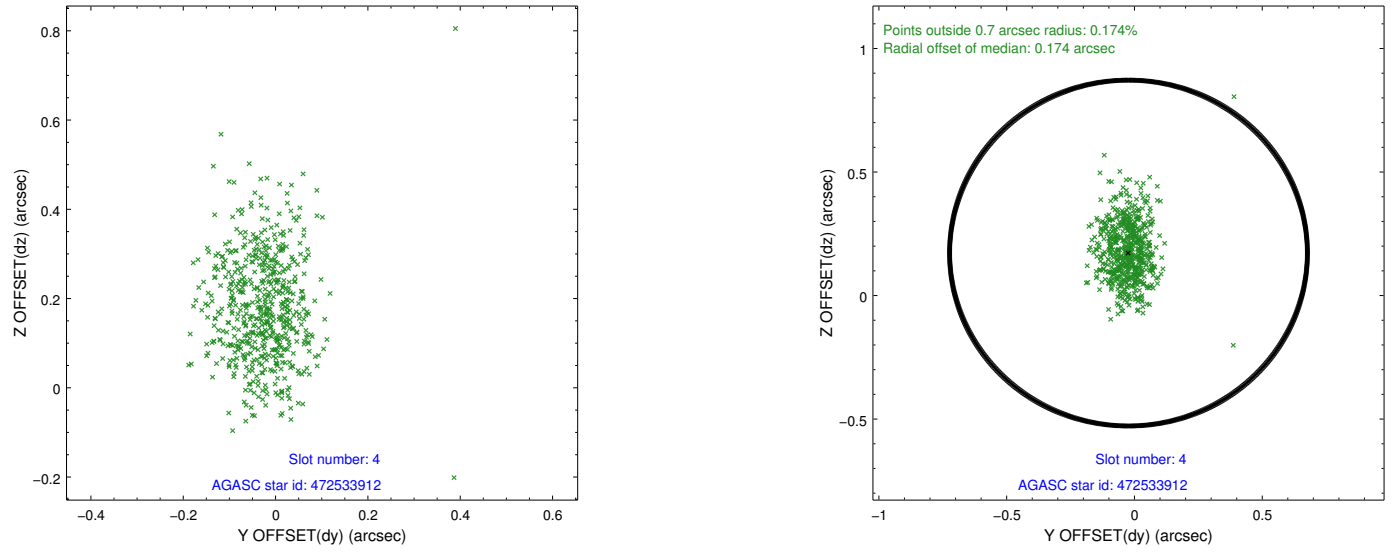


## 2.4 Star Slots

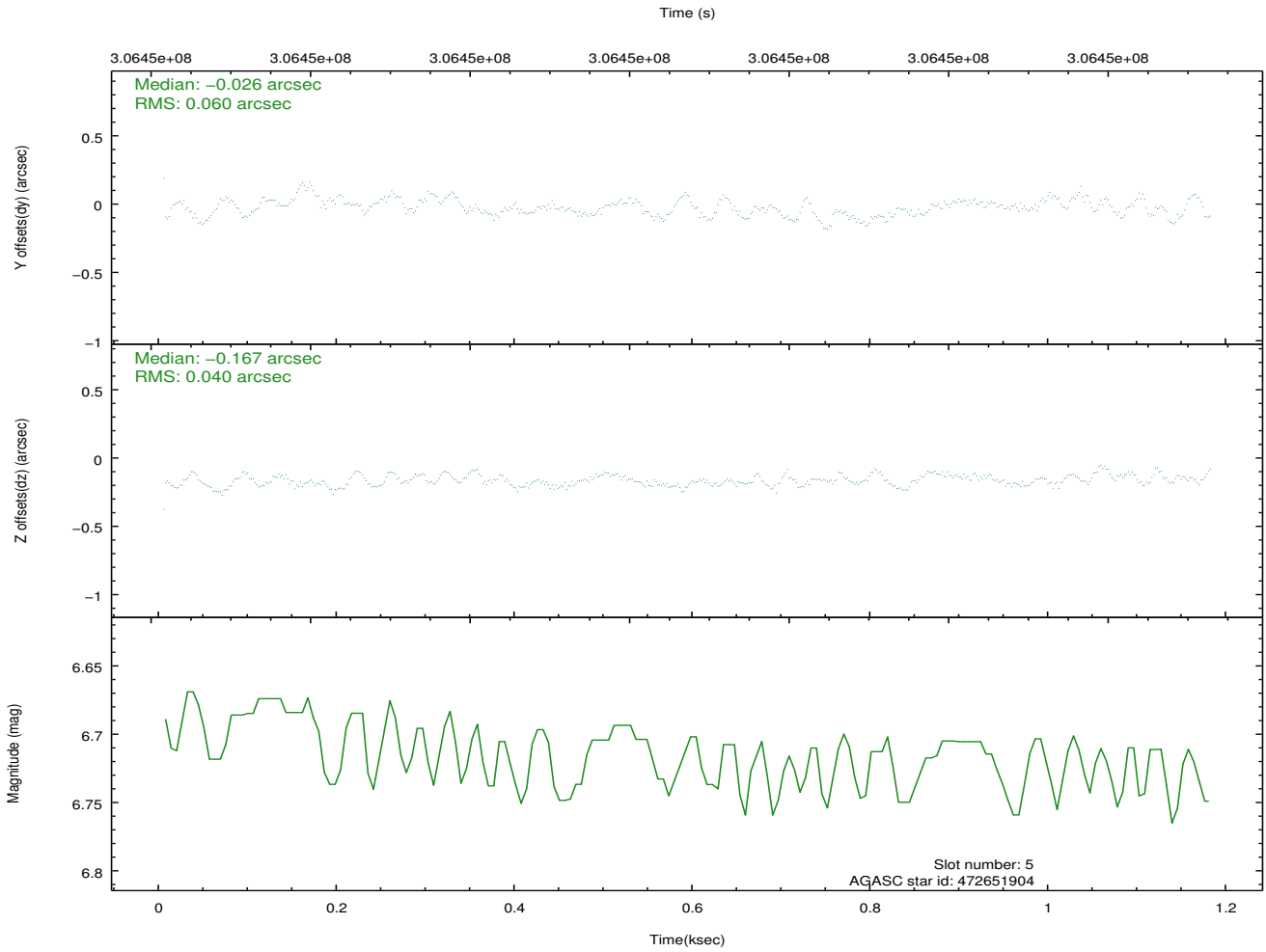
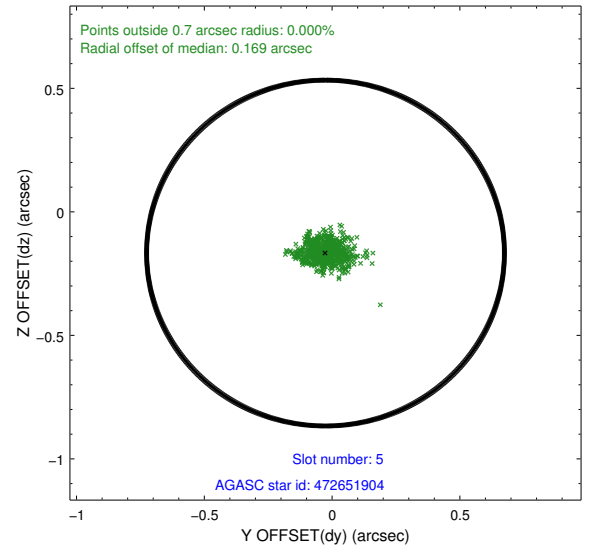
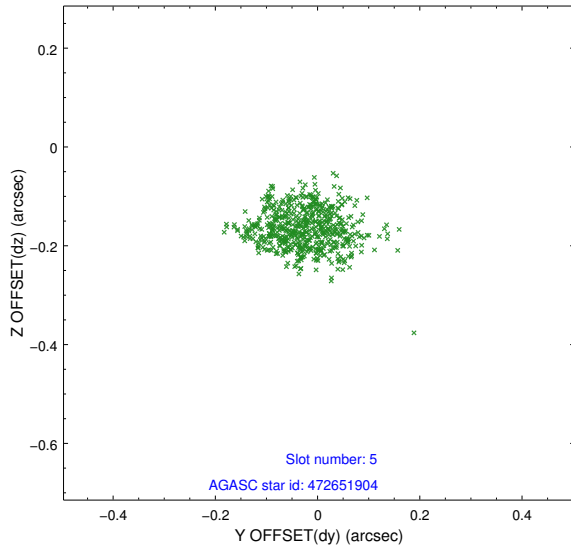
### 2.4.1 Slot 3



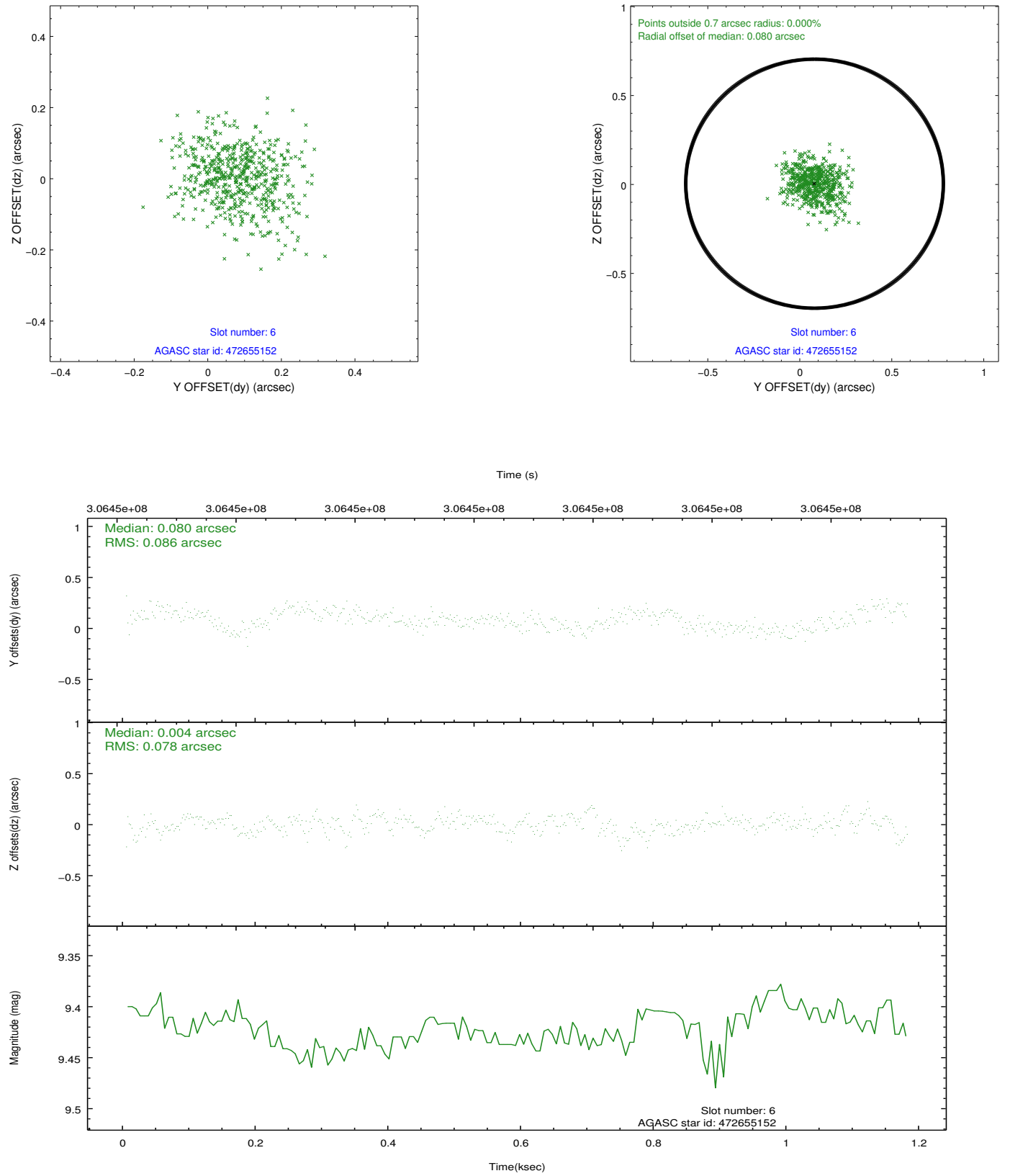
## 2.4.2 Slot 4



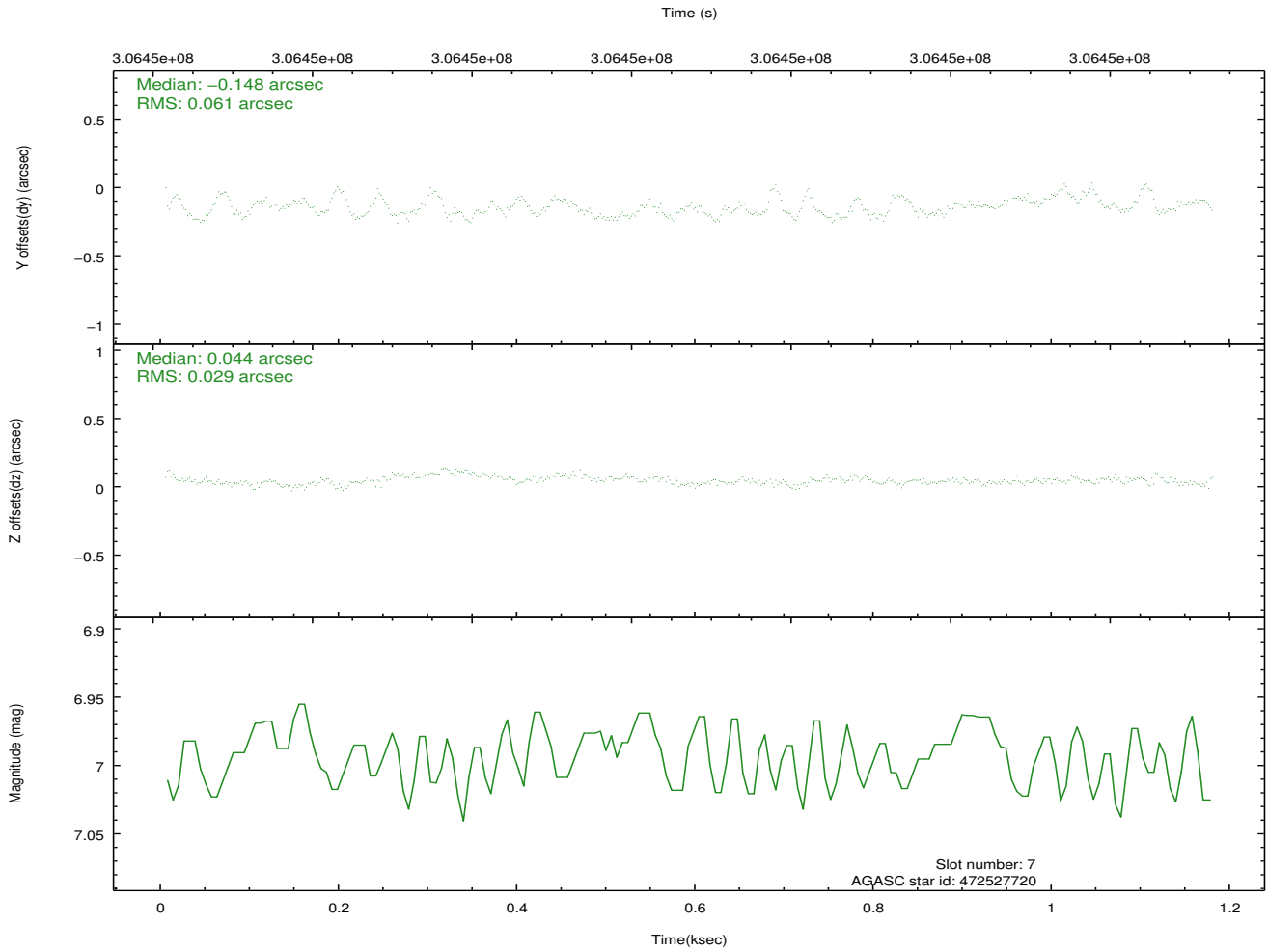
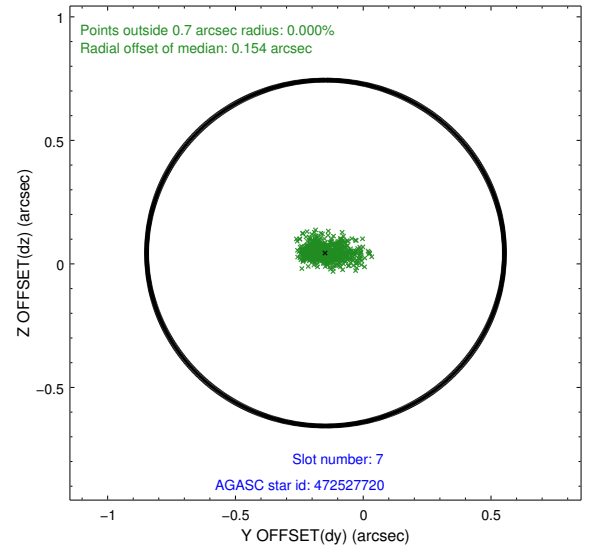
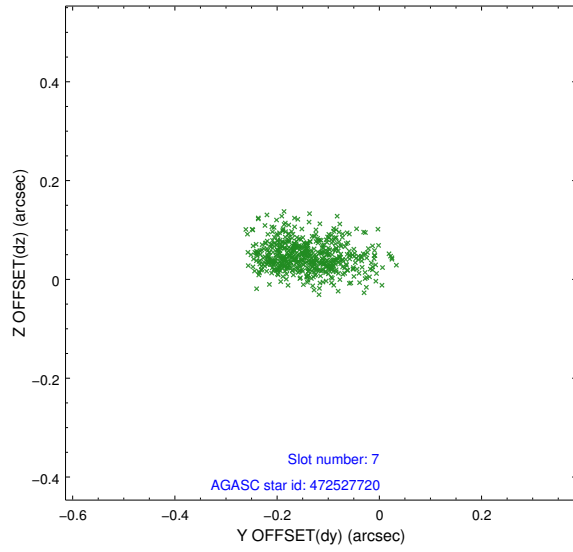
### 2.4.3 Slot 5



## 2.4.4 Slot 6

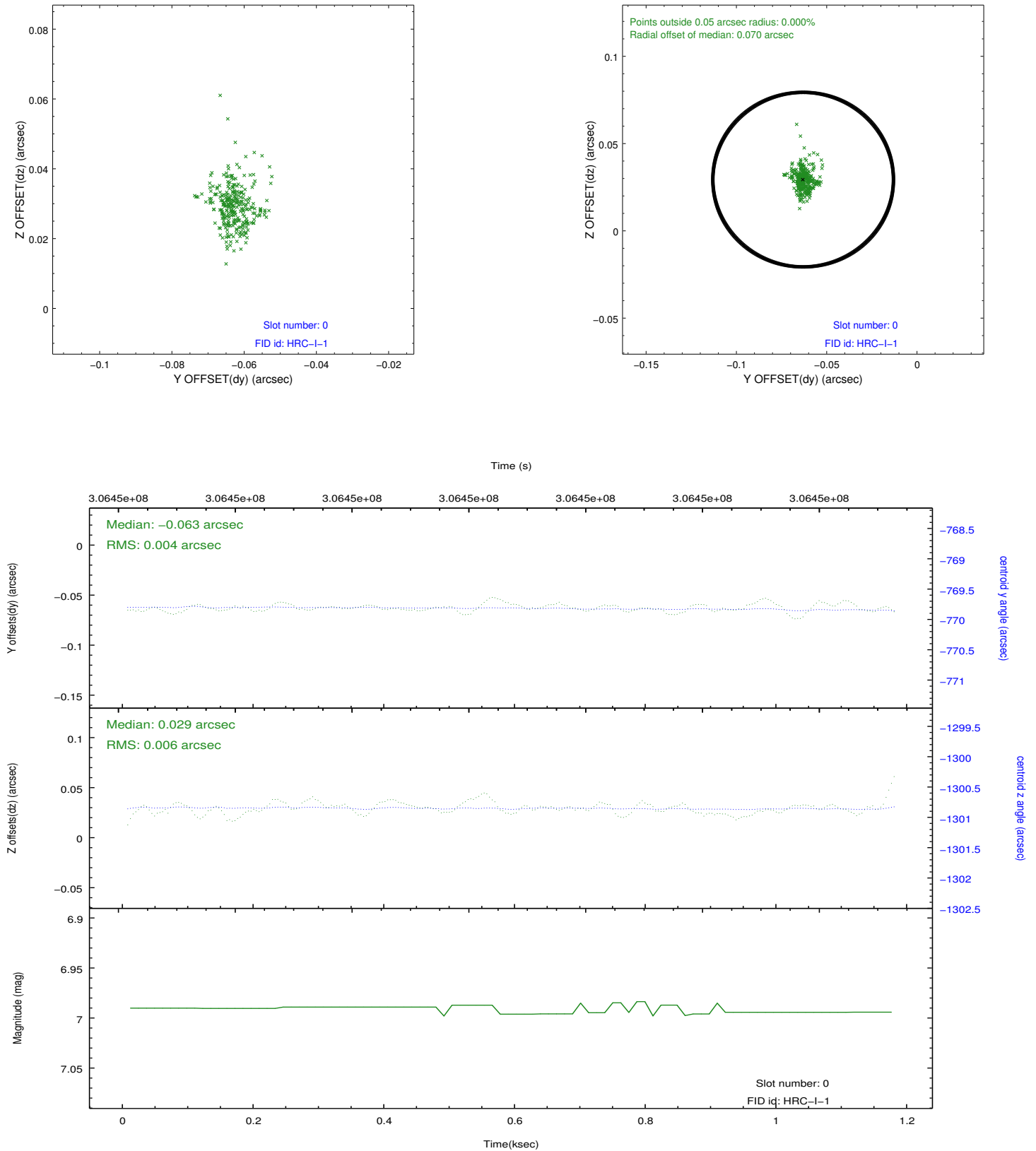


## 2.4.5 Slot 7

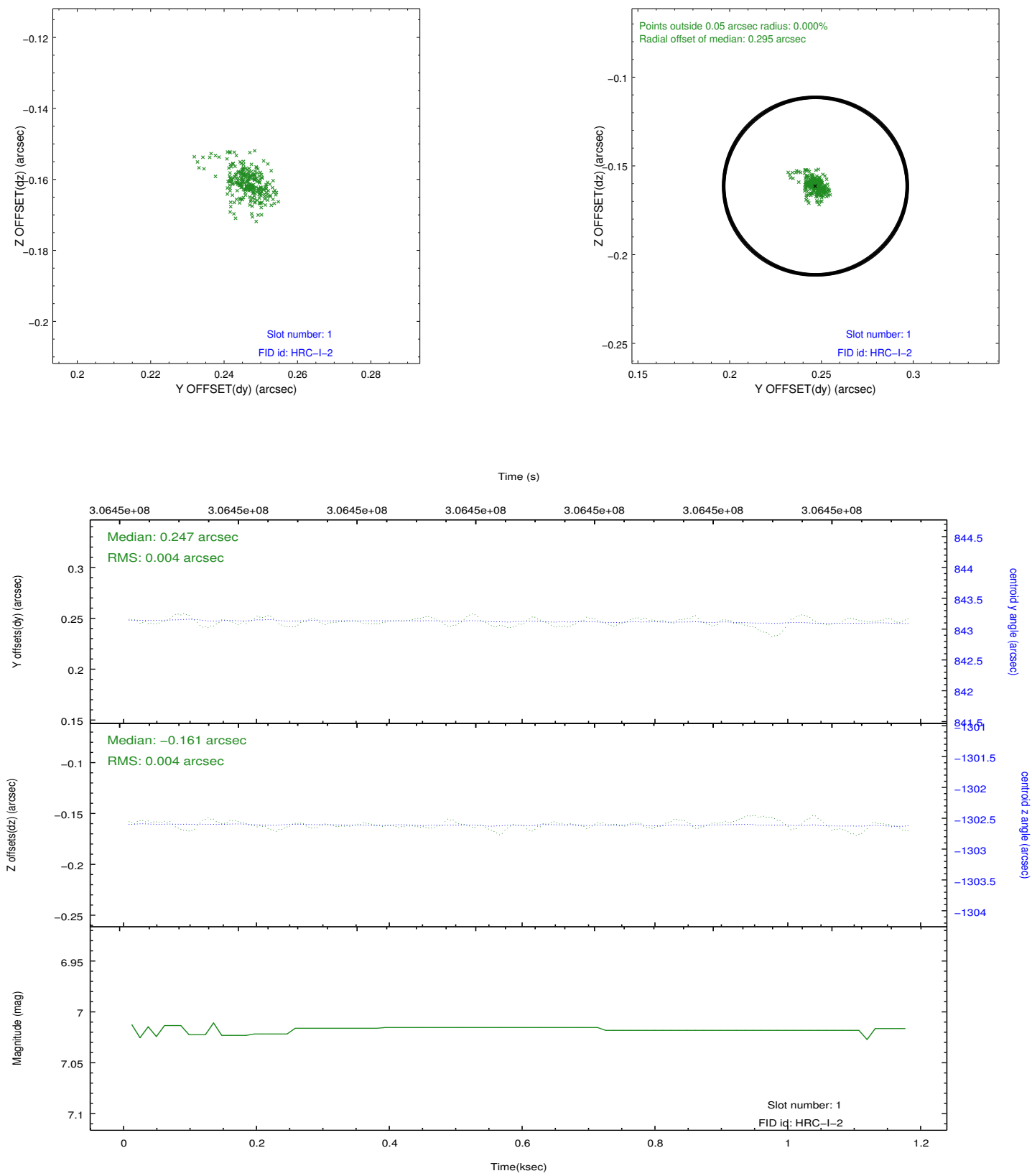


## 2.5 FID Slots

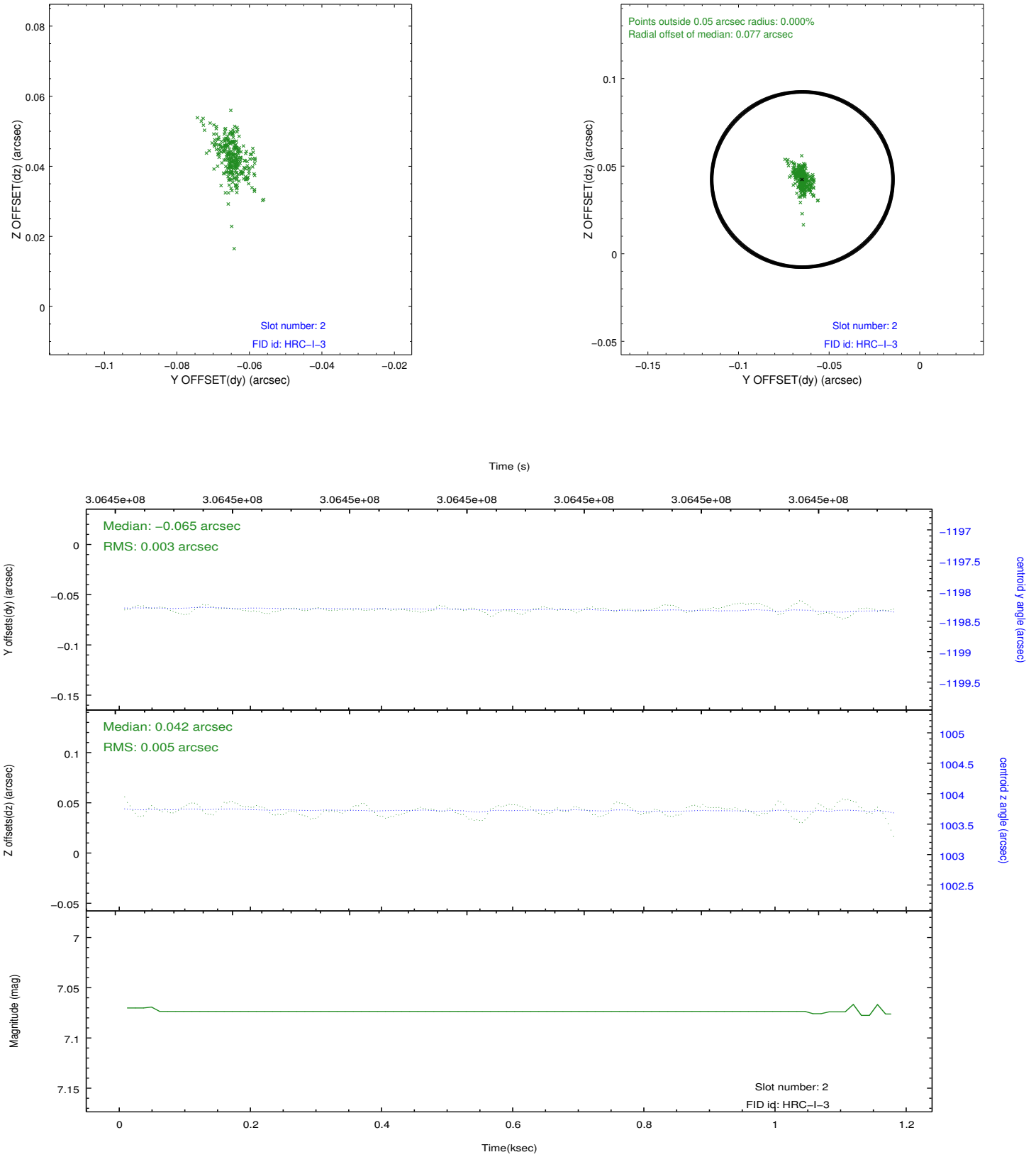
### 2.5.1 Slot 0



2.5.2 Slot 1



### 2.5.3 Slot 2





## A Summary

### A.1 Status

V&V Scientist	Jen Lauer
V&V Date (YYYY-MM-DD)	2012.08.15
V&V Edition	1
V&V Disposition and Status	OK
V&V Charge Time	1.17567505

### A.2 Comments