

V&V Reference Report

L2 ASCDS Version : 8.4.3.1

Observation 7294 - L2 Version 3
Chandra X-Ray Center

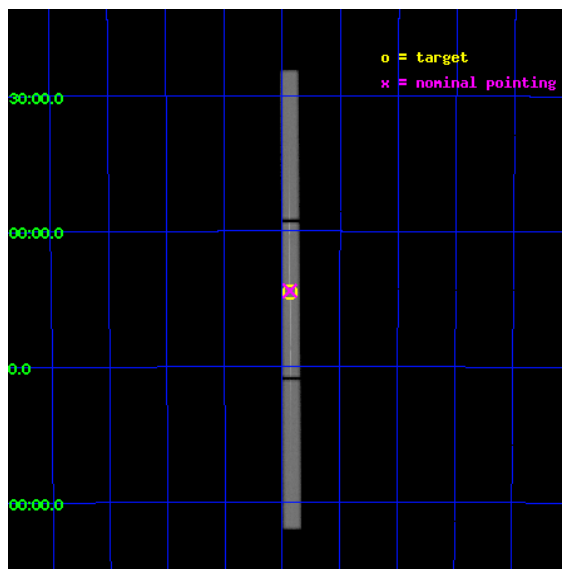
L2 Processing Date : Aug 11 2012

Contents

1	Front	2
2	OBI	3
2.1	OBI	3
2.1.1	Images	3
2.1.2	Parameters	4
2.1.3	Events	4
2.2	Compared Parameters	5
2.3	Aspect	6
2.4	Star Slots	9
2.4.1	Slot 3	9
2.4.2	Slot 4	10
2.4.3	Slot 5	11
2.4.4	Slot 6	12
2.4.5	Slot 7	13
2.5	FID Slots	14
2.5.1	Slot 0	14
2.5.2	Slot 1	15
2.5.3	Slot 2	16
3	Gratings	17
3.1	LETG Arm	17
A	Summary	19
A.1	Status	19
A.2	Comments	19

1 Front

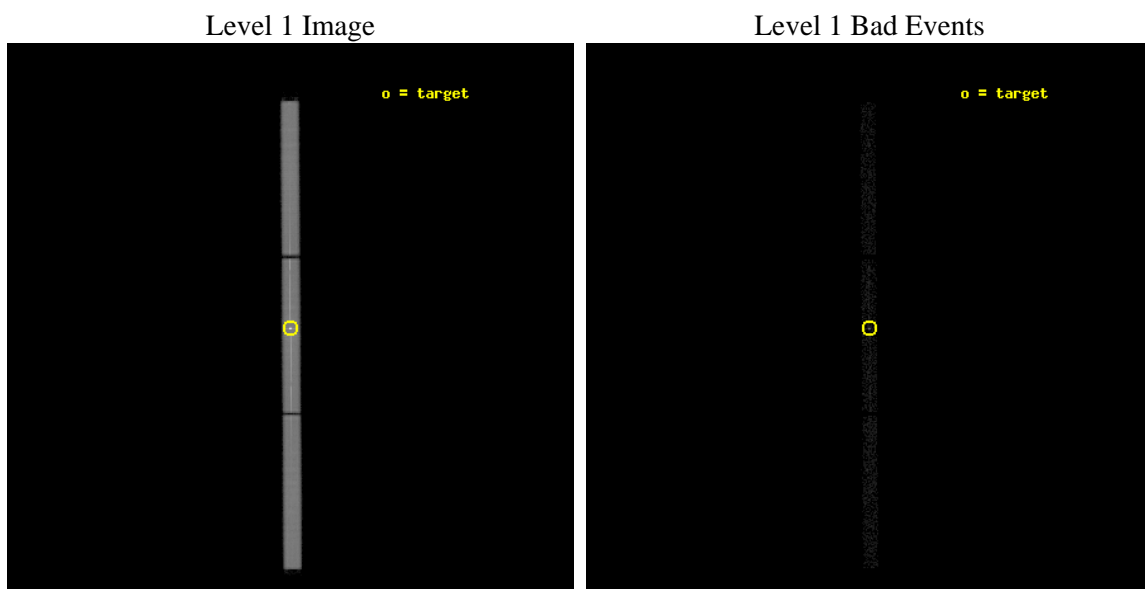
seq_num	790111	Sequence number
obs_id	7294	Observation id
title	AO7 Calibration Observations of 3C273	Proposal title
observer	Dr. CXC Calibration	Principal investigator
object	PKS2155-304	Source name
ra_targ	329.716667	Observer's specified target RA [deg]
dec_targ	-30.225556	Observer's specified target Dec [deg]
ra_nom	329.71691601076	Nominal RA [deg]
dec_nom	-30.220749491545	Nominal Dec [deg]
roll_nom	89.573507876608	Nominal Roll [deg]
revision	3	Processing version of data
ontime	10104.450473309	[s]
livetime	10004.409248143	Ontime multiplied by DTCOR
l2events	844073	Number of level 2 events



2 OBI

2.1 OBI

2.1.1 Images



2.1.2 Parameters

obi_num	0	Obi number	sched_exp_time	10000.000000	[s] Scheduled observation exposure time
ascdsver	8.4.5	Processing system revision	ontime	10104.450473309	[s]
caldsver	4.5.1.1	 	l1events	1122821	Number of level 1 events
date	2012-08-11T10:15:22	Date and time of file creation			
revision	3	Processing version of data			

2.1.3 Events

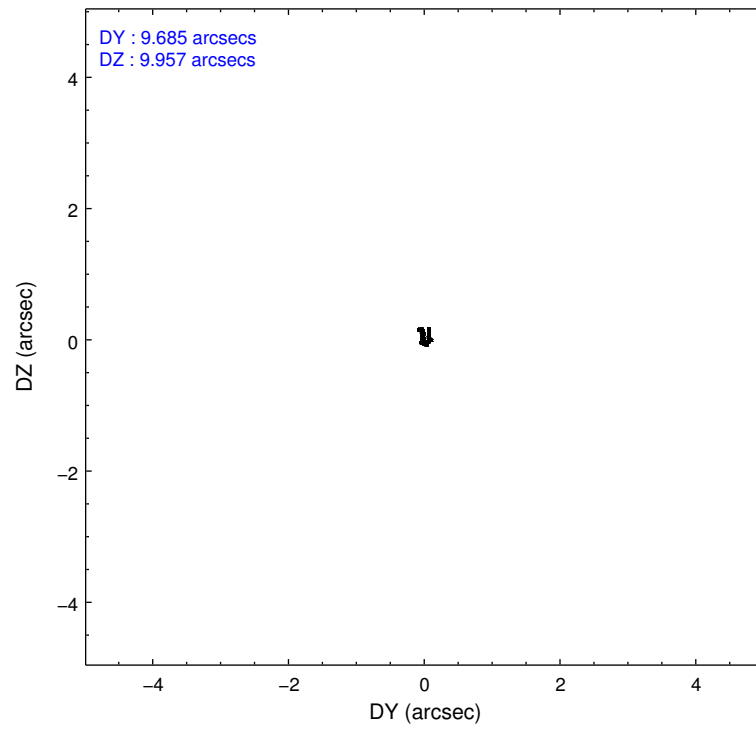
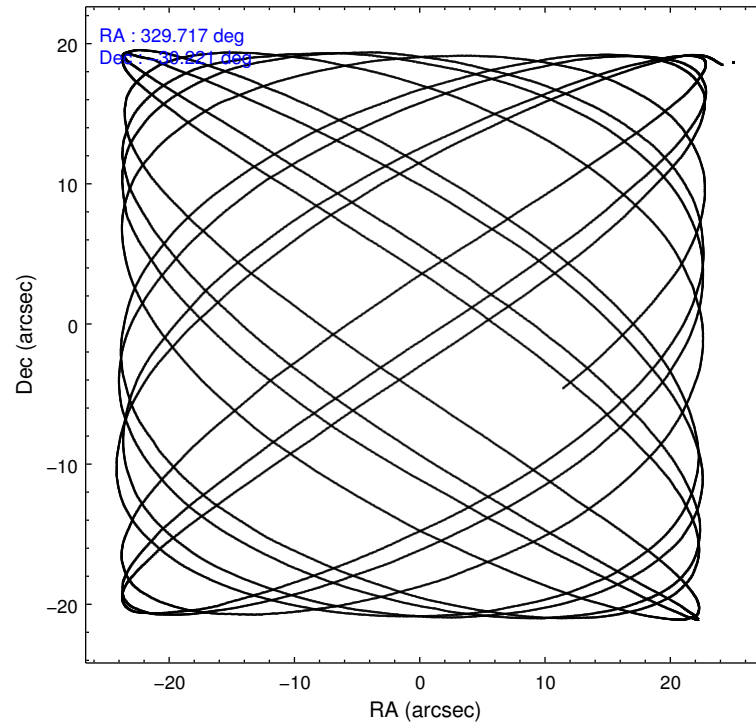
Level 1 Events

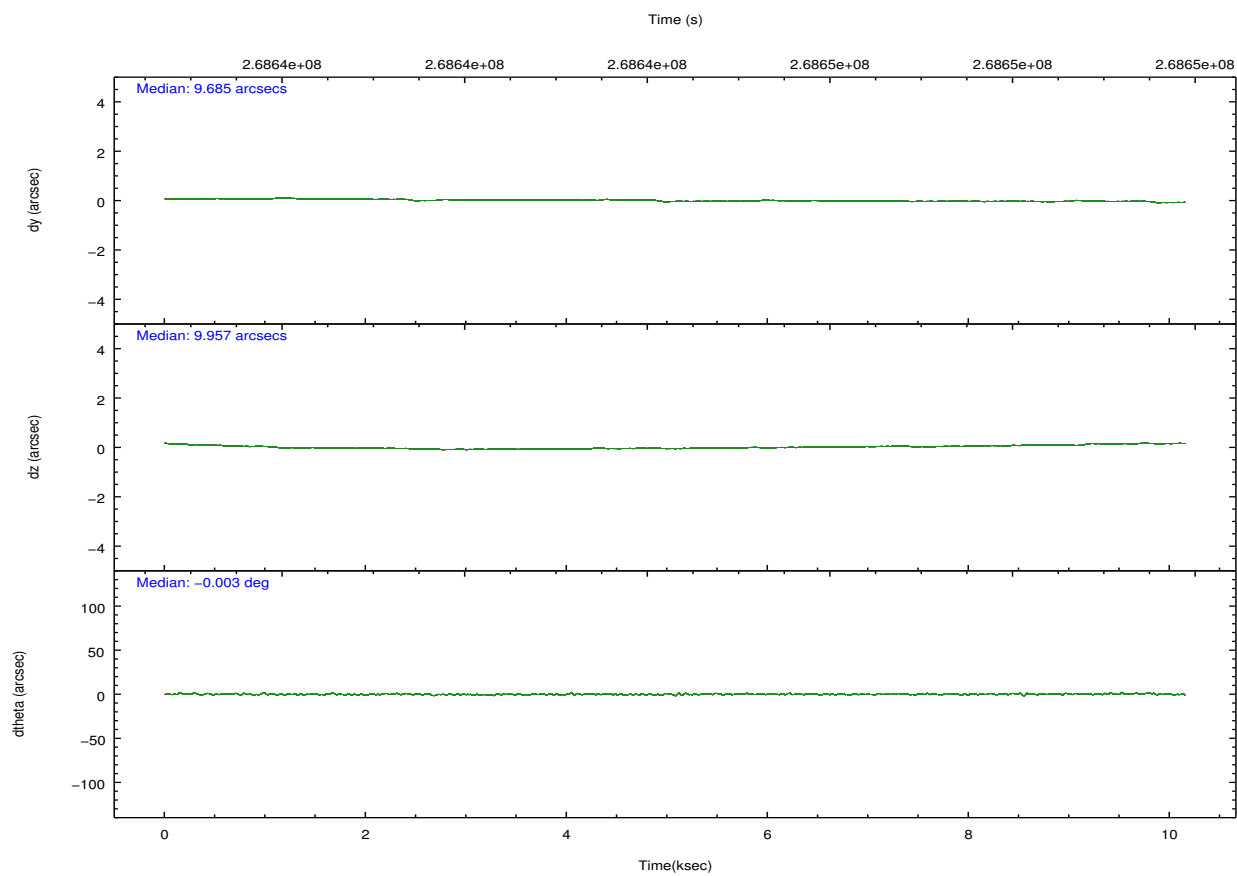
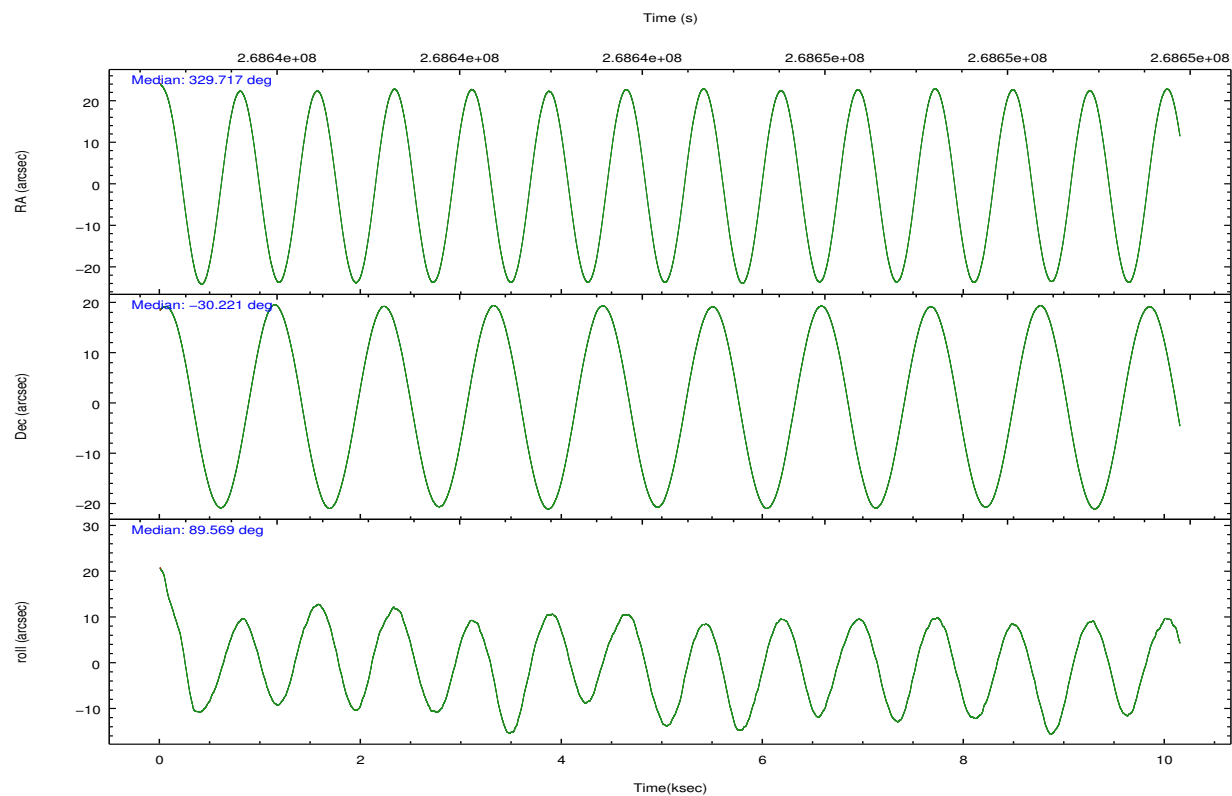
	segment 1	segment 2	segment 3
level 1 events	343565	432358	346898
rejected events	11554	12772	11197
rejected %	3%	2%	3%

2.2 Compared Parameters

Parameter	Planned	Actual	Parameter	Planned	Actual
Instrument	HRC	HRC	Obspar format version number	7	7
Detector	HRC-S	HRC-S	Obspar file type	PREDICTED	ACTUAL
Grating	LETG	LETG	Obspar update status	NONE	UPDATED
Data mode	OBSERVING	OBSERVING			
Observation mode	POINTING	POINTING			
[deg] Pointing RA	329.734613	329.7169160107642			
[deg] Pointing Dec	-30.245018	-30.22074949154522			
[deg] Pointing Roll	89.515076	89.5735078766082			
[mm] SIM focus pos	-1.429586	-1.428180813131781			
[mm] SIM defocus	0.1037507710433287	0.1051558262725154			
[mm] SIM translation stage pos	250.455976	250.466033080201			
[mm] SIM translation stage offset	0	-0.01005468664627074			
[s] Observation start time (MET)	268639389.184000	268638961.26934			
Observation start date	2006-07-07T06:02:04	2006-07-07T05:56:01			
[s] Observation end time (MET)	268649389.184000	268649389.10733			
Observation end date	2006-07-07T08:48:44	2006-07-07T08:49:49			

2.3 Aspect



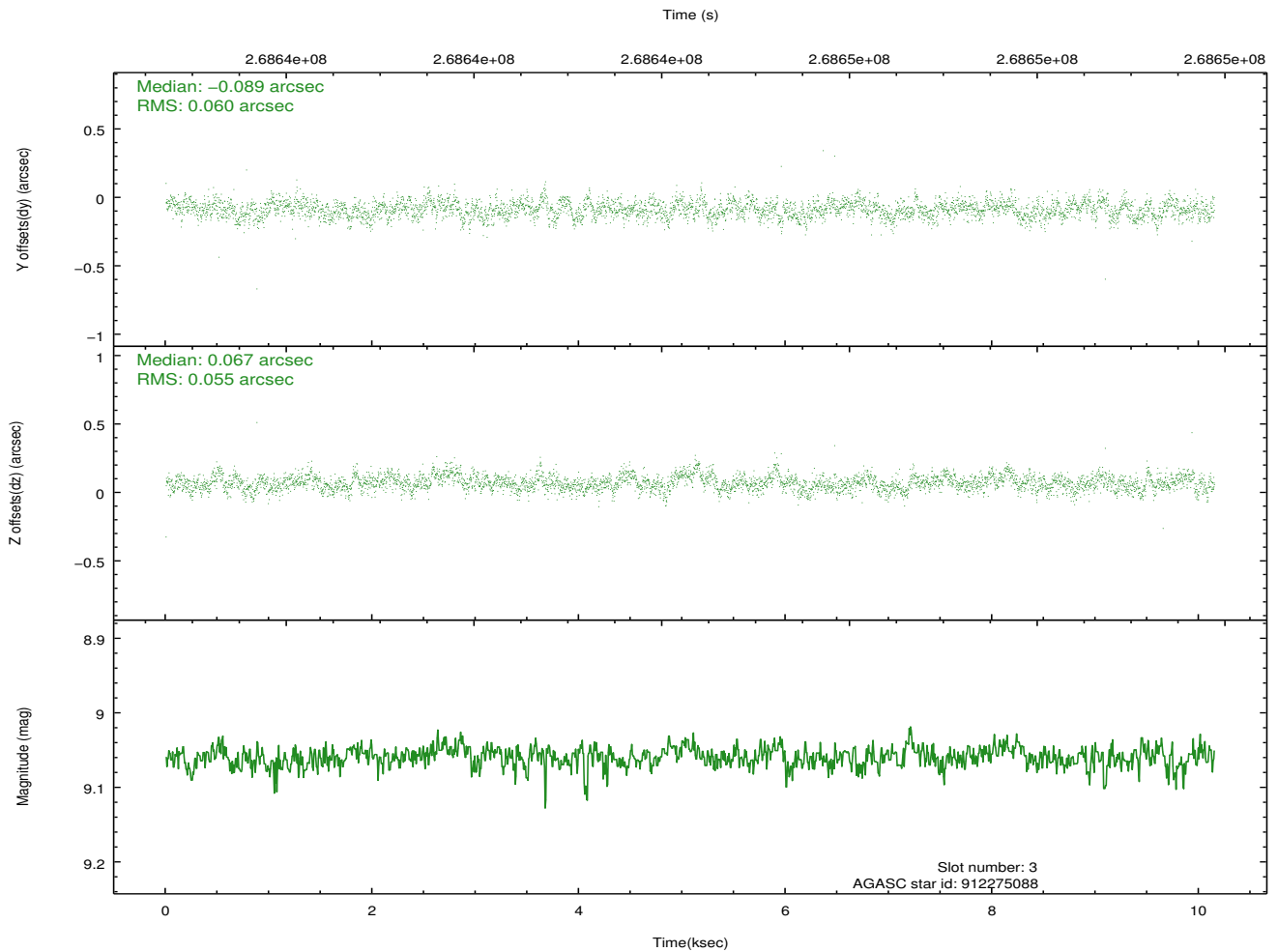
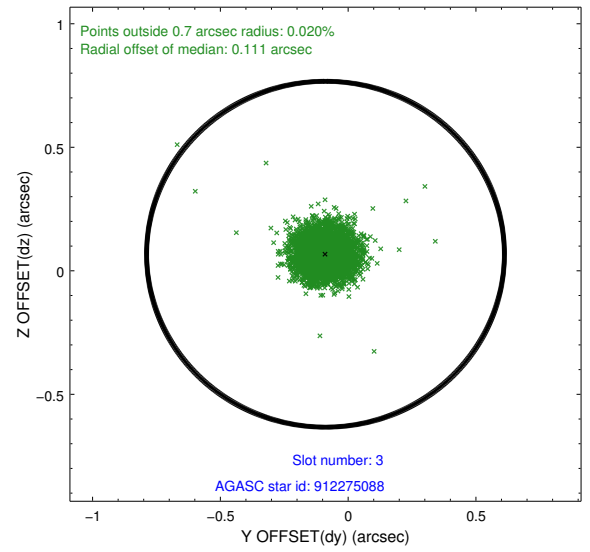
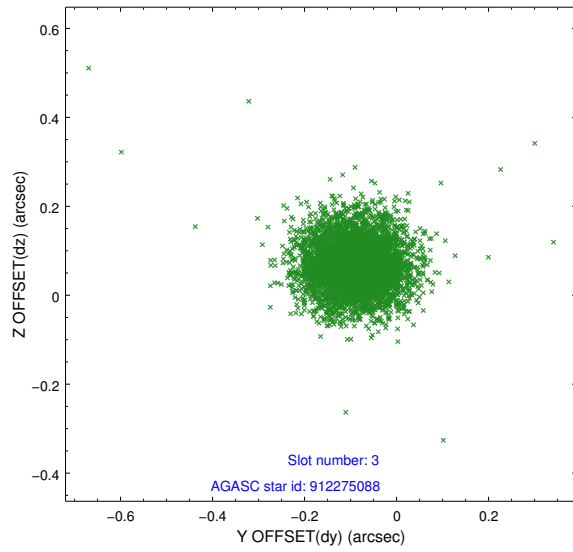


Slot Statistics

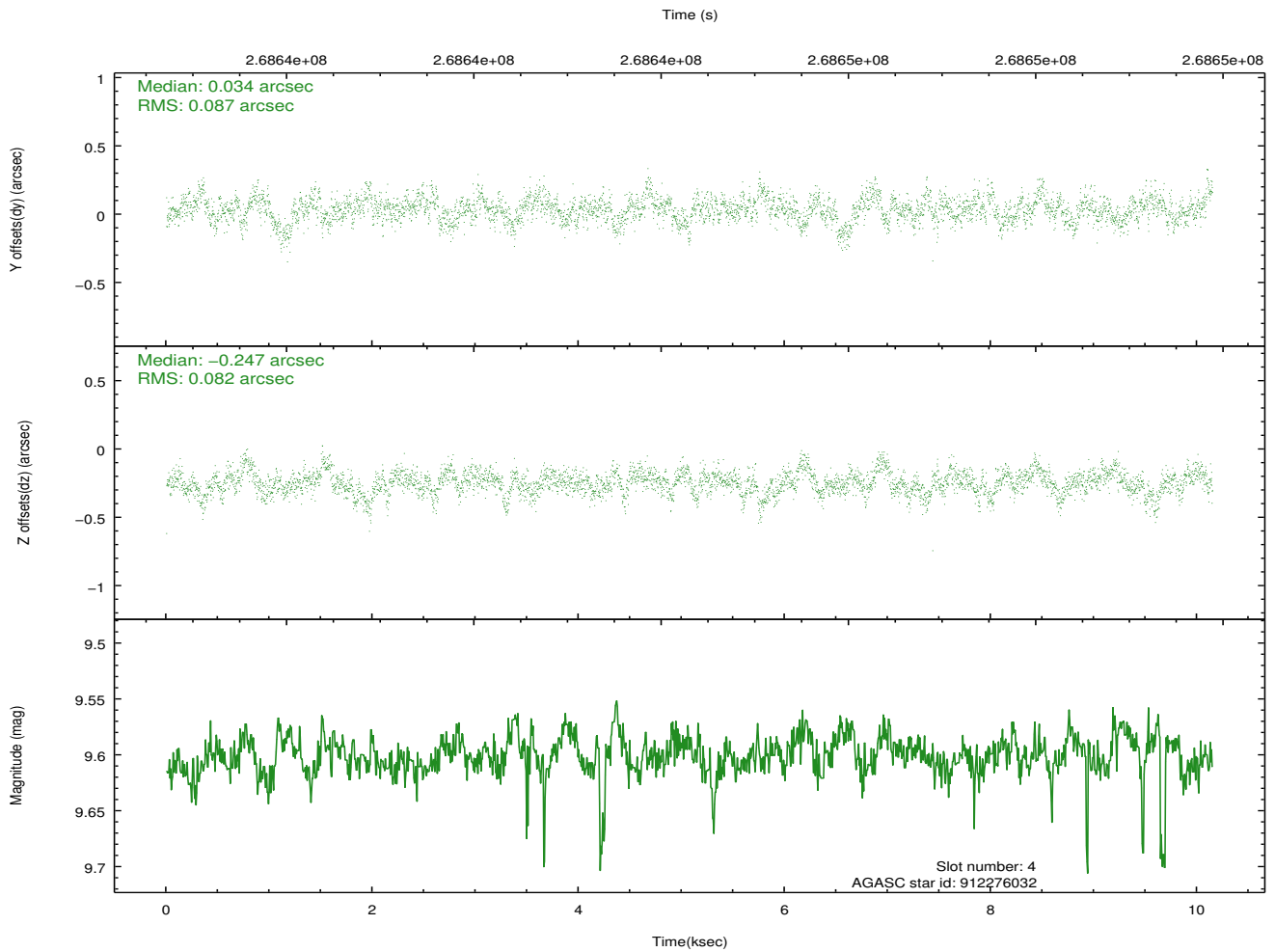
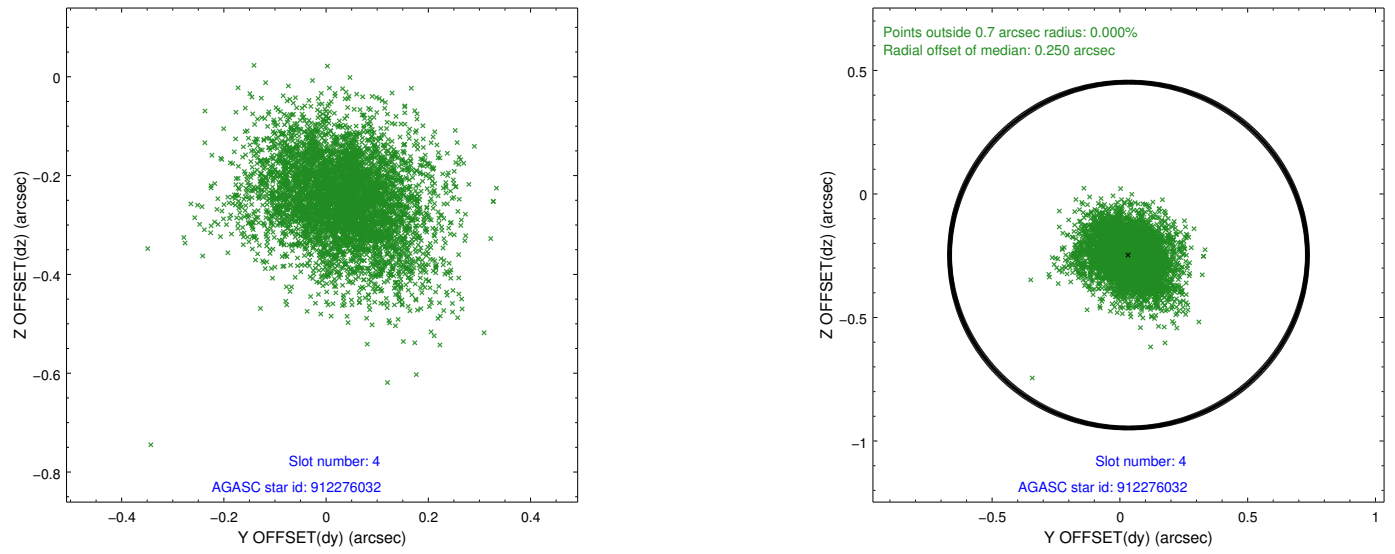
slot	status	id	mag	n_pts	med_dy	med_dz	dr1	dr2	ra	dec	mean_y	mean_z
0	FID	HRC-S-1	7.04	2476	0.141	-0.211	0.007	0.011	0.000000	0.000000	-1163.91	-458.70
1	FID	HRC-S-2	7.02	2476	0.154	-0.115	0.005	0.009	0.000000	0.000000	1235.31	-451.46
2	FID	HRC-S-3	7.04	2476	0.095	0.024	0.007	0.011	0.000000	0.000000	-1166.16	570.88
3	GUIDE	912275088	9.06	4940	-0.089	0.067	0.084	0.137	329.619228	-29.738698	1819.03	376.53
4	GUIDE	912276032	9.60	4927	0.034	-0.247	0.124	0.213	329.395967	-29.803466	1579.06	1071.50
5	GUIDE	981469488	9.60	4945	-0.074	0.124	0.129	0.205	329.261199	-30.045155	703.75	1481.89
6	GUIDE	981471664	6.35	4951	0.085	-0.145	0.079	0.127	328.981826	-30.605916	-1327.11	2321.29
7	GUIDE	981478152	9.40	4941	0.050	0.197	0.109	0.183	329.415589	-30.057192	665.75	1000.64

2.4 Star Slots

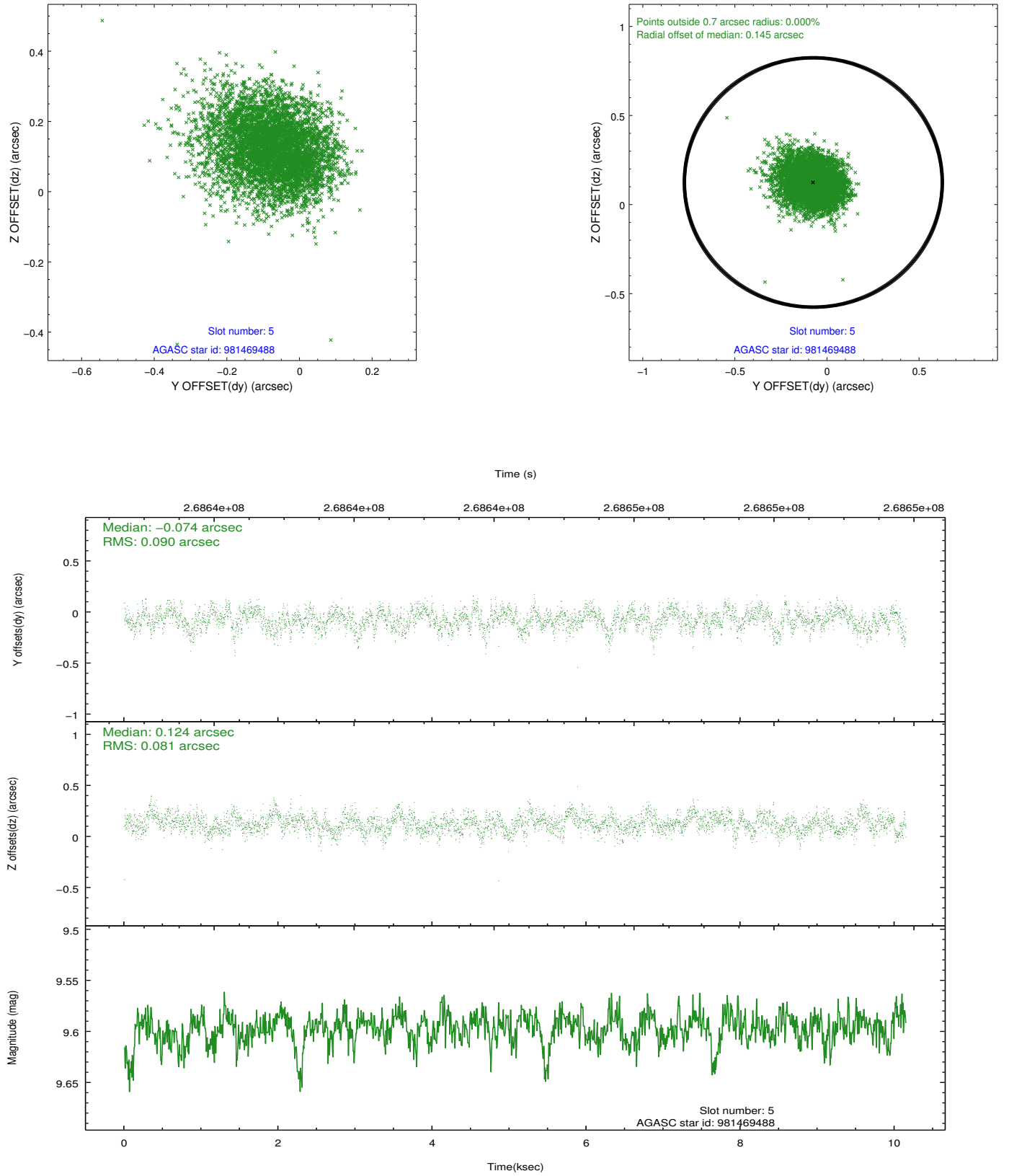
2.4.1 Slot 3



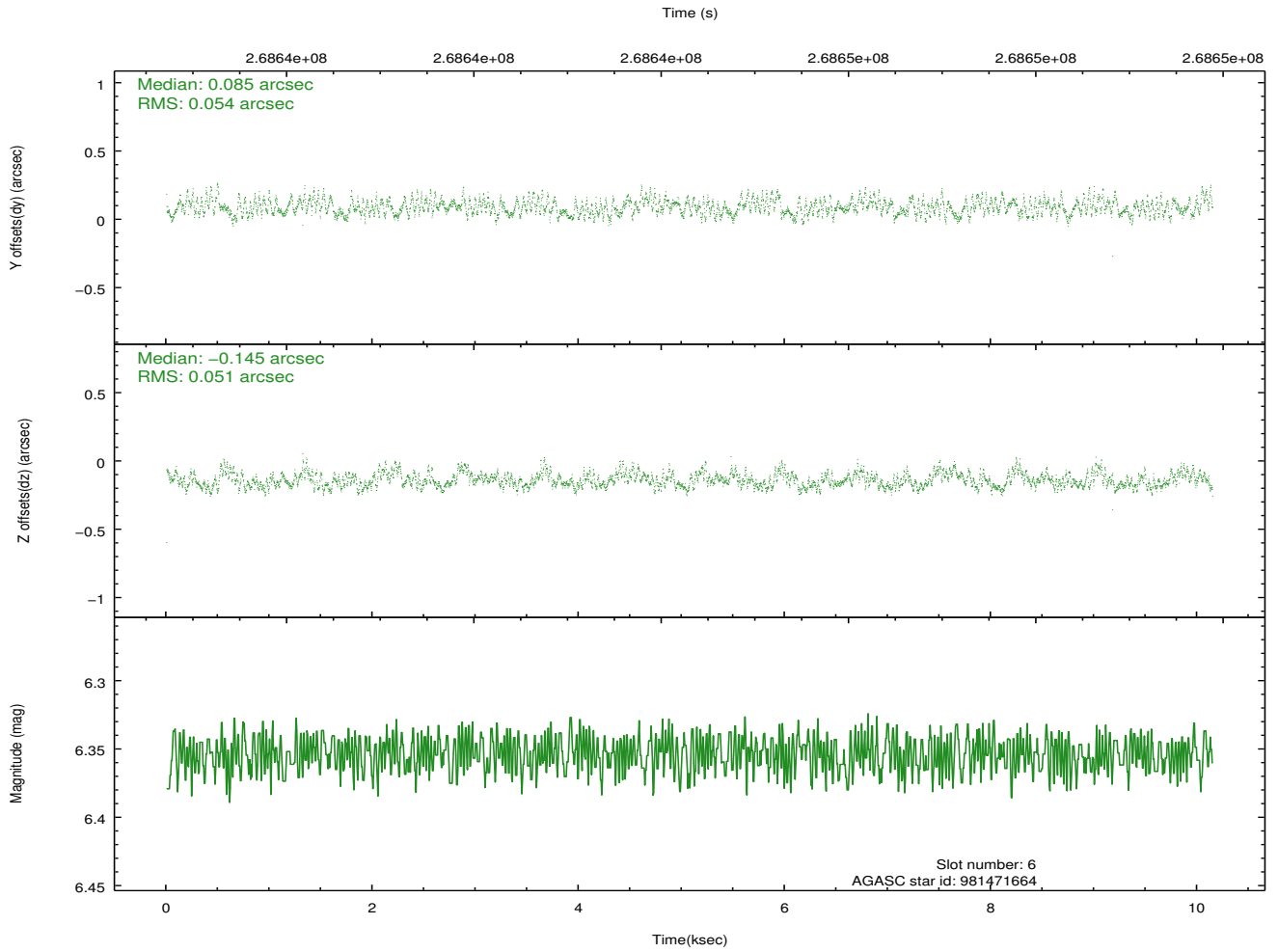
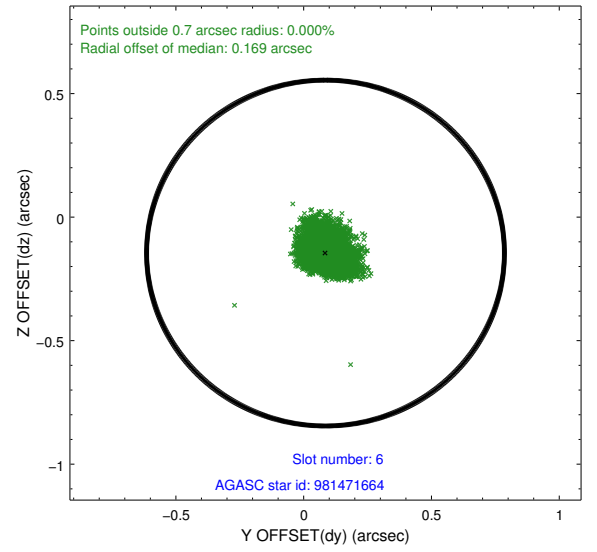
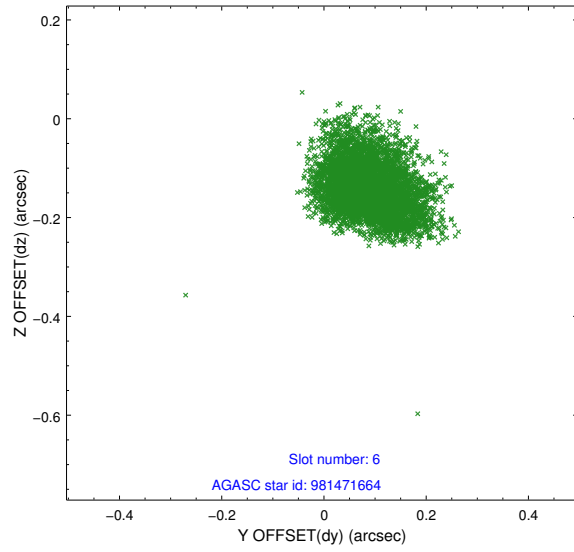
2.4.2 Slot 4



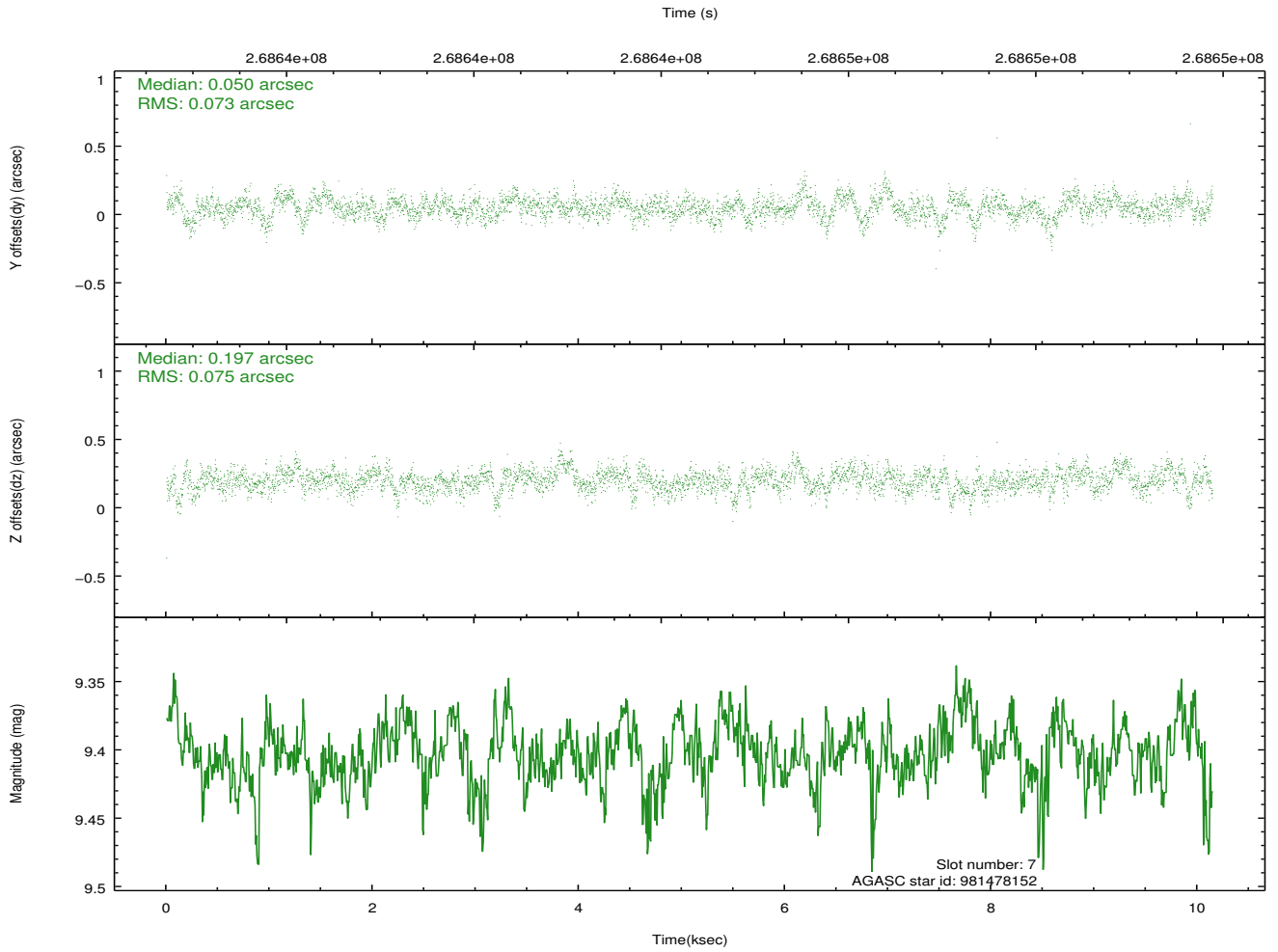
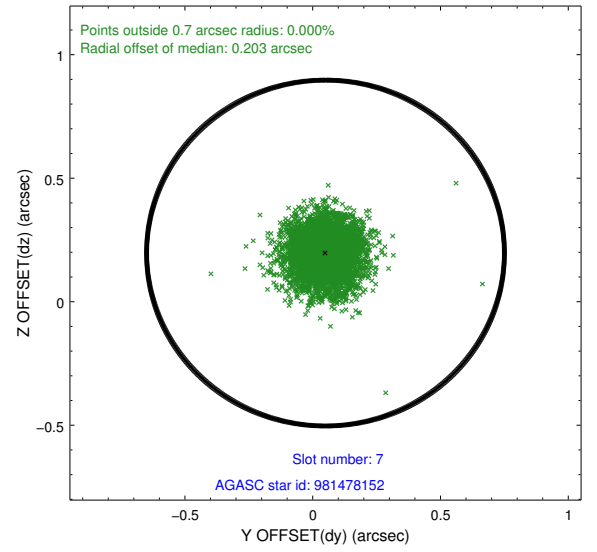
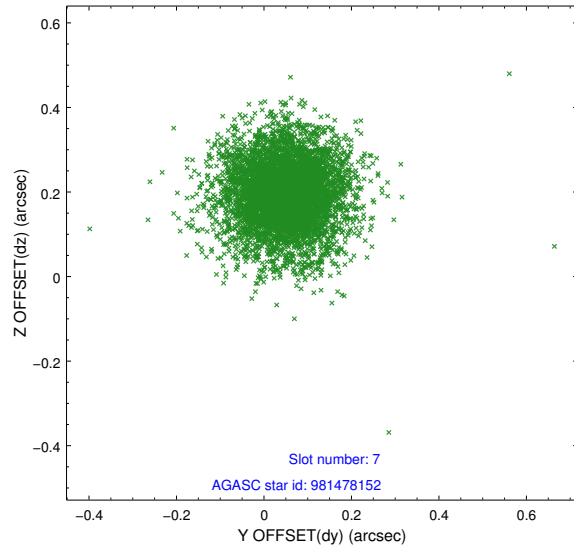
2.4.3 Slot 5



2.4.4 Slot 6

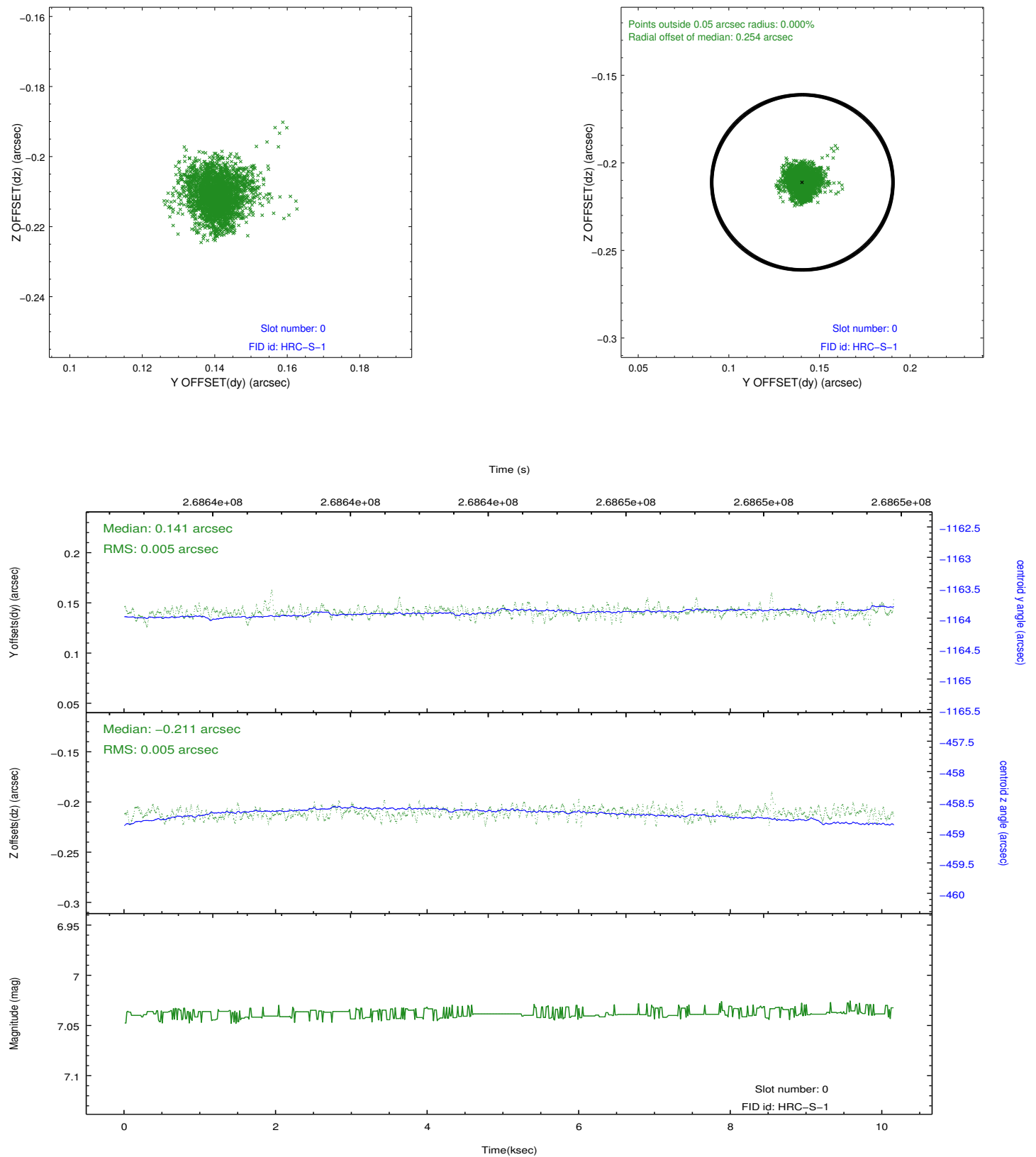


2.4.5 Slot 7

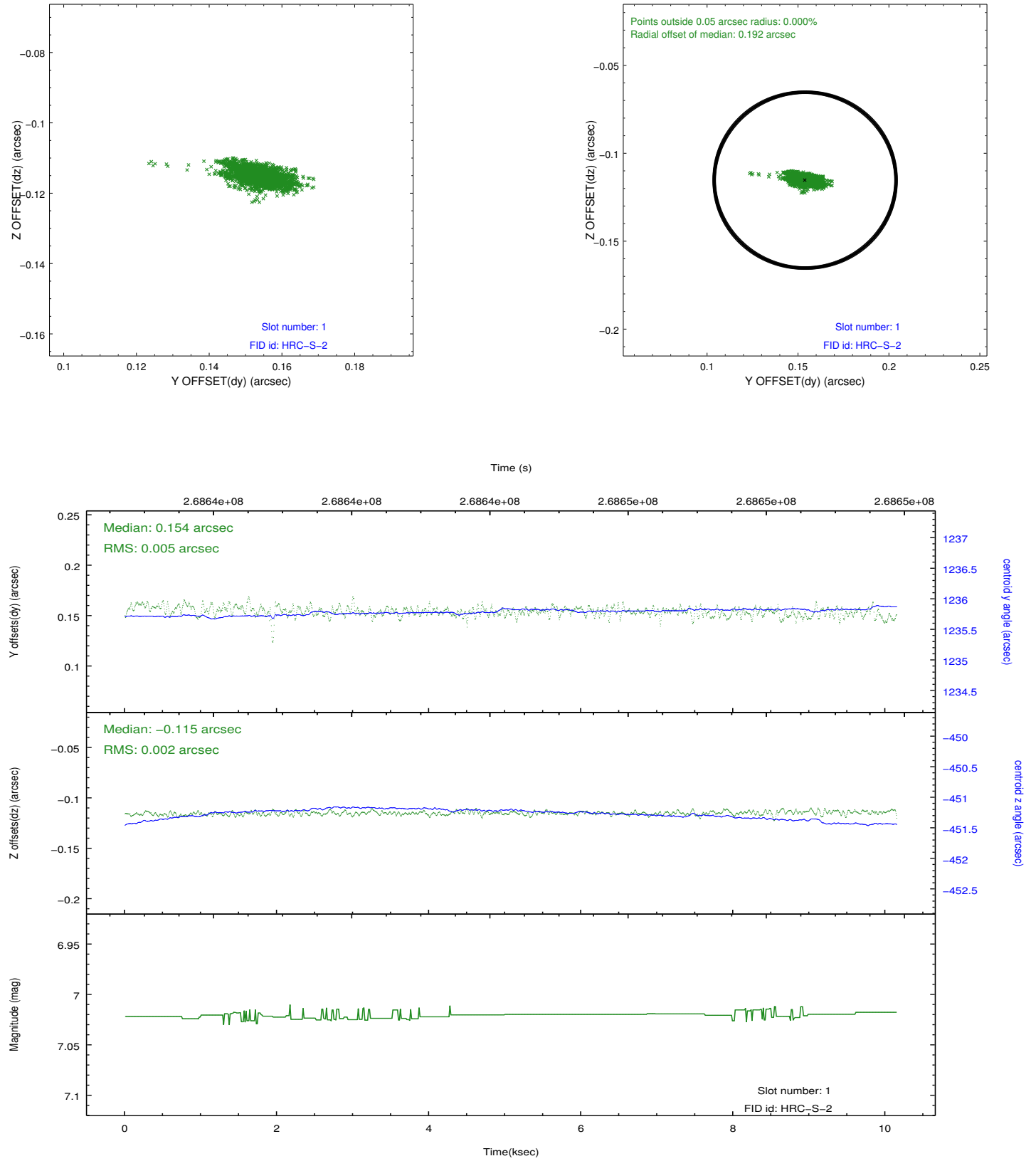


2.5 FID Slots

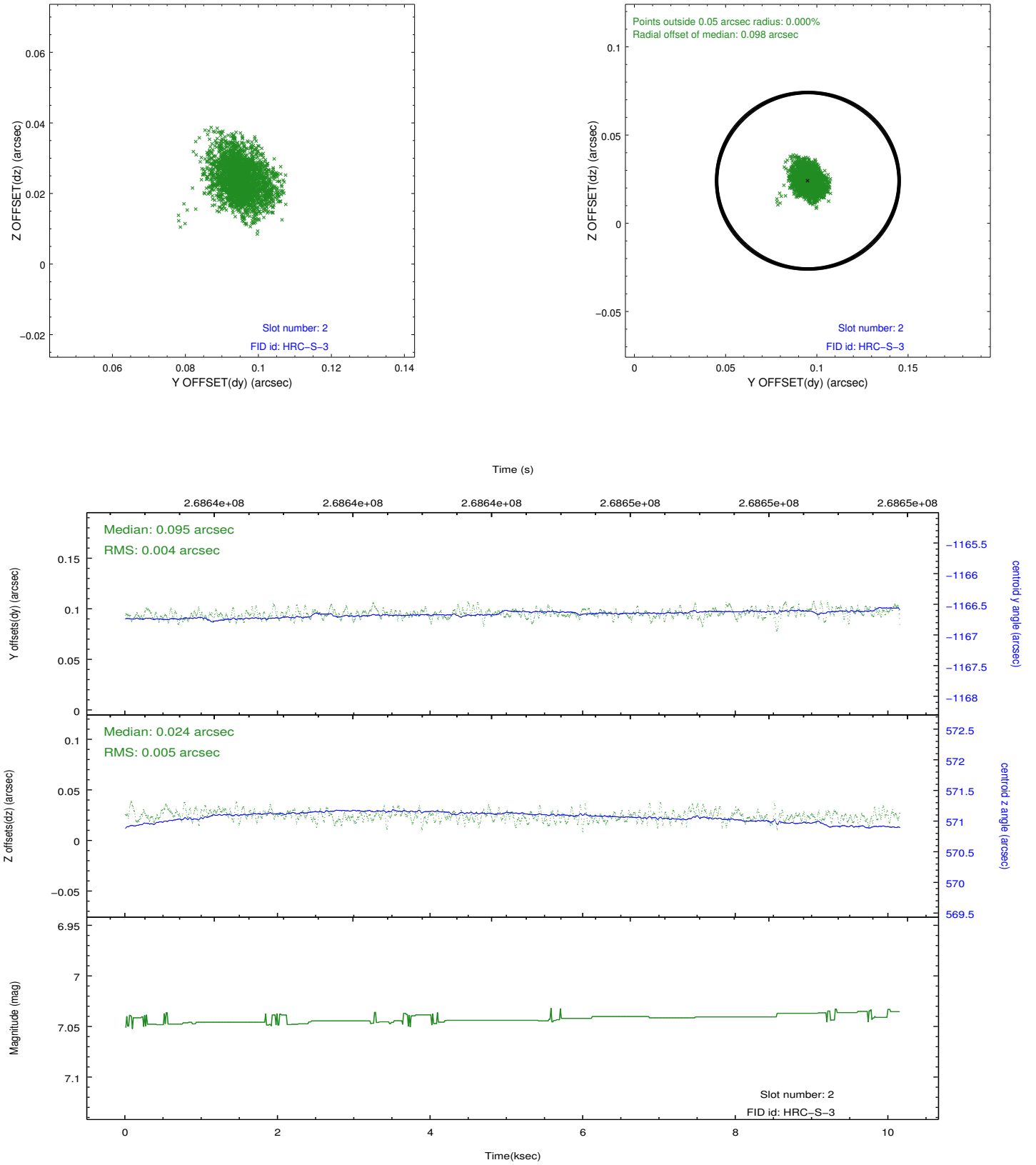
2.5.1 Slot 0



2.5.2 Slot 1

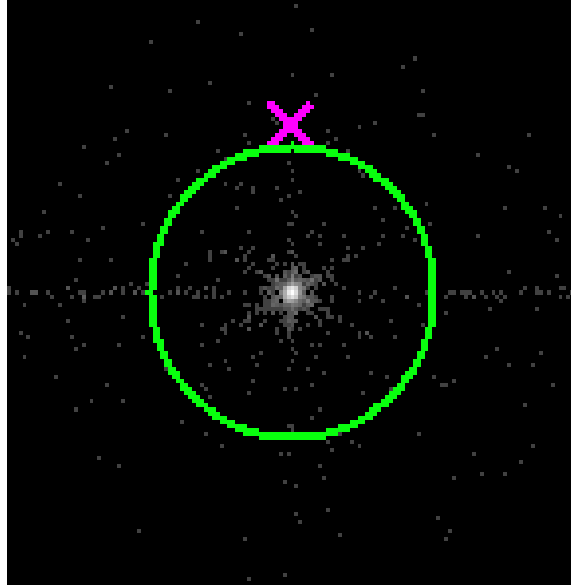


2.5.3 Slot 2

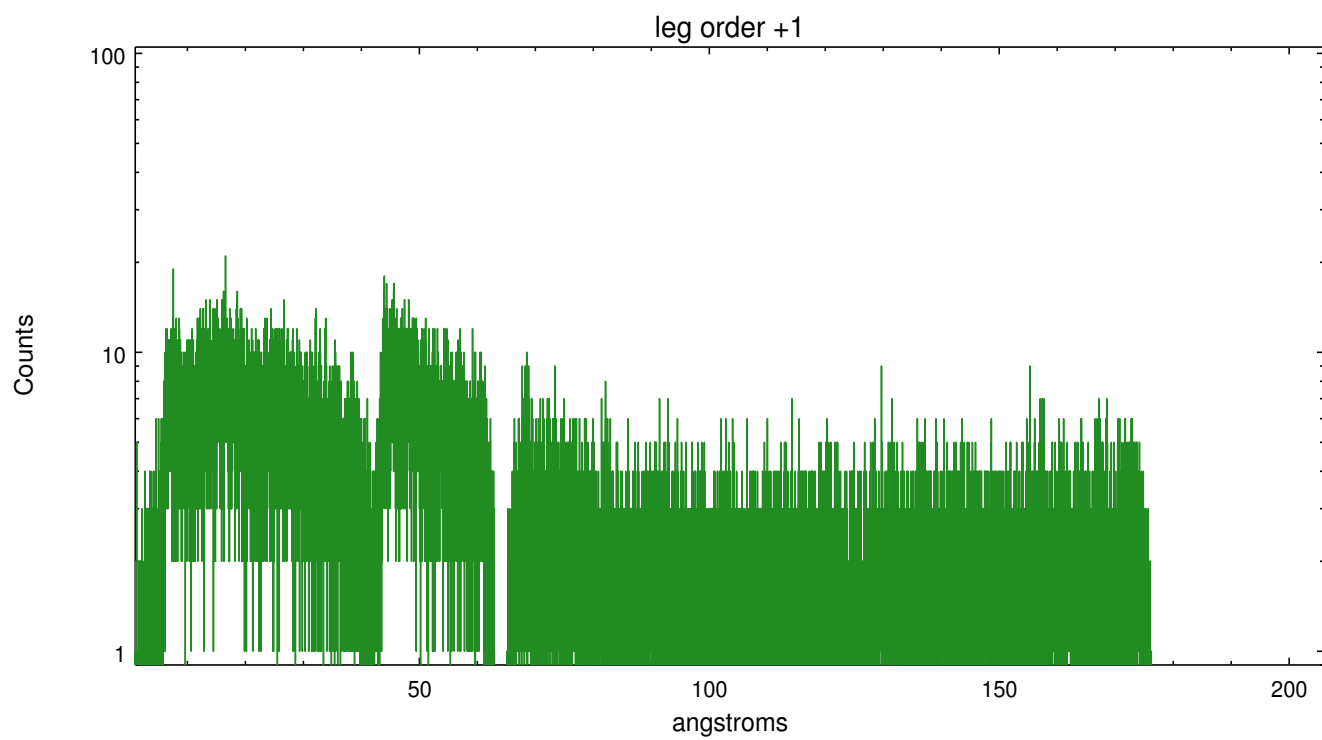
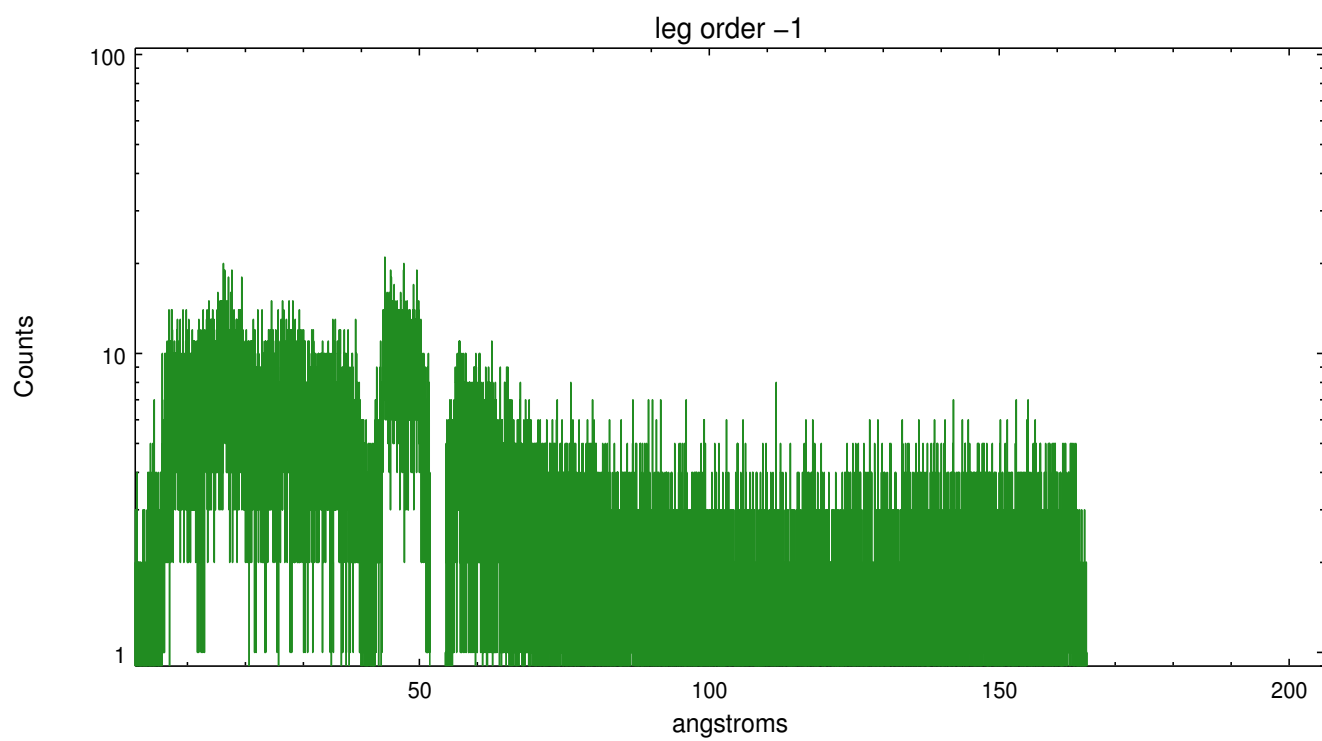


3 Gratings

3.1 LETG Arm



LETG Zero Order



A Summary

A.1 Status

V&V Scientist	Joy Nichols
V&V Date (YYYY-MM-DD)	2012.08.14
V&V Edition	1
V&V Disposition and Status	OK
V&V Charge Time	10.1044504

A.2 Comments

Spike in count rate from about 100 counts per second to about 200 counts per second between 9.9 ksec into the observation through the end of the observation. This spike is probably due to a high radiation environment.