

V&V Reference Report

L2 ASCDS Version : 8.4.3.1

Observation 7293 - L2 Version 2
Chandra X-Ray Center

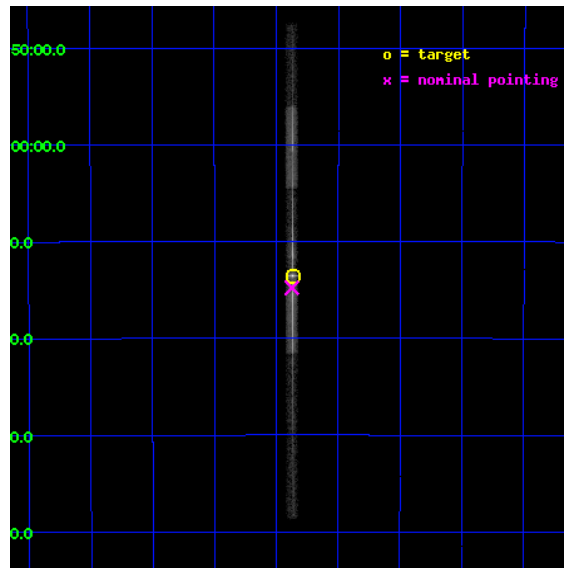
L2 Processing Date : Apr 4 2012

Contents

1	Front	2
2	OBI	3
2.1	OBI	3
2.1.1	Images	3
2.1.2	Bias	3
2.1.3	Parameters	4
2.1.4	Events	4
2.2	Compared Parameters	5
2.3	Aspect	6
2.4	Star Slots	9
2.4.1	Slot 3	9
2.4.2	Slot 4	10
2.4.3	Slot 5	11
2.4.4	Slot 6	12
2.4.5	Slot 7	13
2.5	FID Slots	14
2.5.1	Slot 0	14
2.5.2	Slot 1	15
2.5.3	Slot 2	16
3	Gratings	17
3.1	LETG Arm	17
A	Summary	19
A.1	Status	19
A.2	Comments	19

1 Front

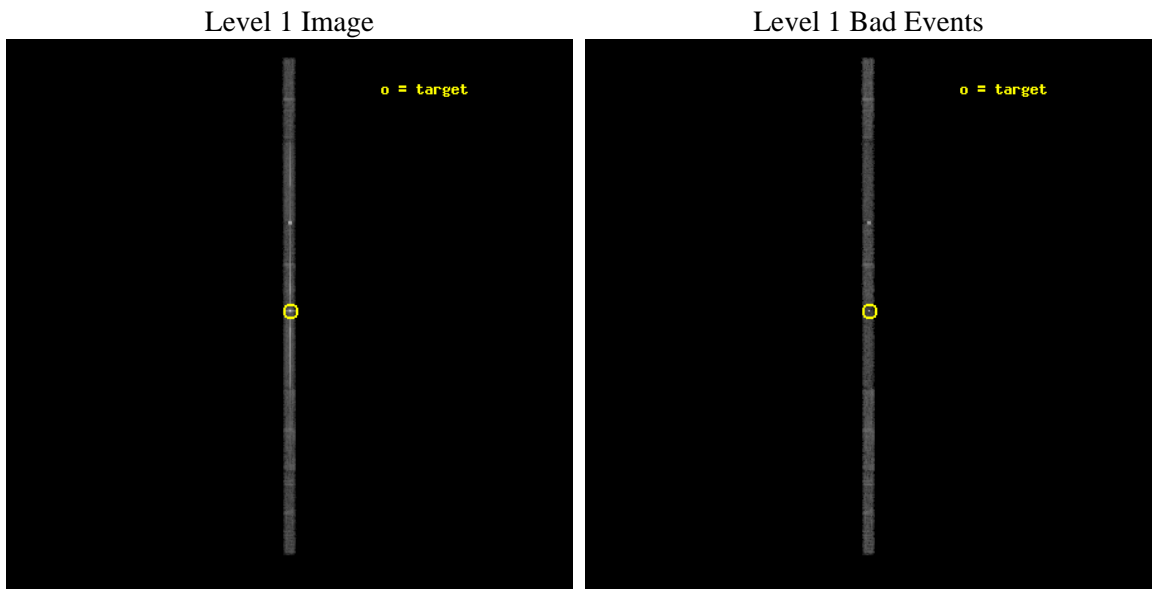
seq_num	790110	Sequence number
obs_id	7293	Observation id
title	AO7 Calibration Observations of PKS2155-304	Proposal title
observer	Dr. CXC Calibration	Principal investigator
object	PKS2155-304	Source name
dtcycle	0	
cycle	P	events from which exps? Prim/Second/Both
ra_targ	329.716667	Observer's specified target RA [deg]
dec_targ	-30.225556	Observer's specified target Dec [deg]
ra_nom	329.71850535889	Nominal RA [deg]
dec_nom	-30.246504595211	Nominal Dec [deg]
roll_nom	89.874647716668	Nominal Roll [deg]
revision	2	Processing version of data
ontime	8998.4919883013	Sum of GTIs [s]
livetime	8500.1408720324	Livetime [s]
ontime4	8998.4998466969	Sum of GTIs [s]
ontime5	8998.450948298	Sum of GTIs [s]
ontime6	8998.4099082947	Sum of GTIs [s]
ontime7	8998.4919883013	Sum of GTIs [s]
ontime8	8998.3688682914	Sum of GTIs [s]
ontime9	8998.3278282881	Sum of GTIs [s]
l2events	86031	Number of level 2 events



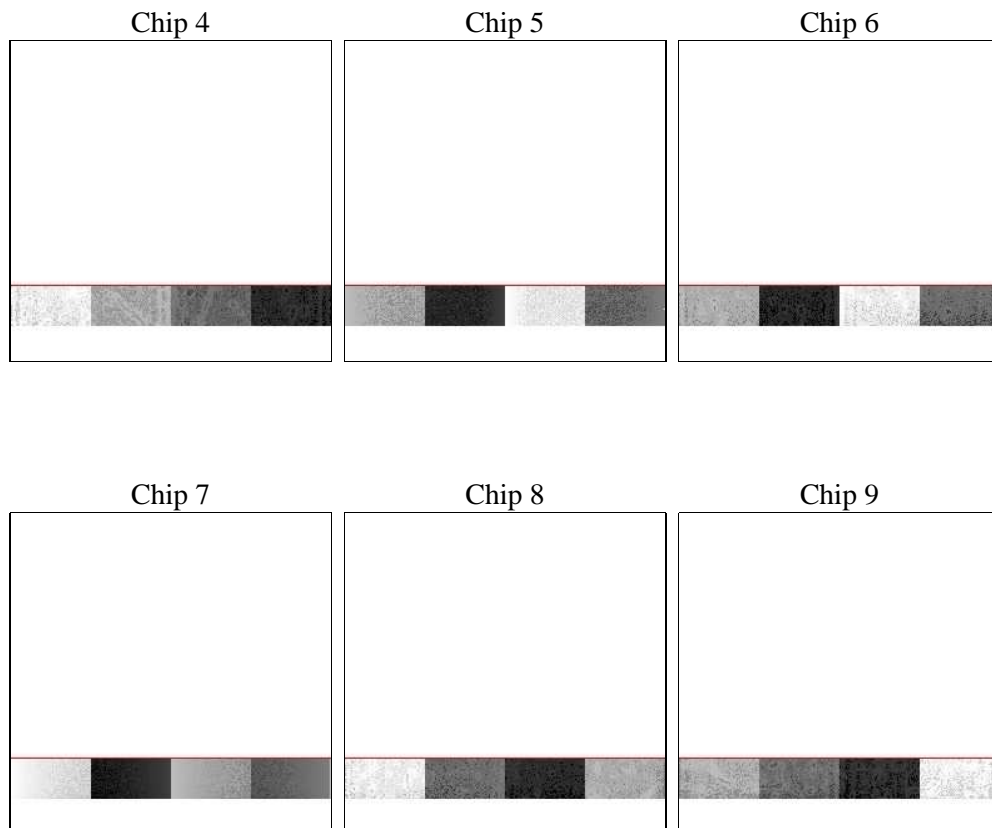
2 OBI

2.1 OBI

2.1.1 Images



2.1.2 Bias



2.1.3 Parameters

obi_num	0	Obi number	sched_exp_time	10000.000000	[s] Scheduled observation exposure time
ascdsver	8.4.3.1	Processing system revision	ontime	8998.4919883013	Sum of GTIs [s]
caldsver	4.4.9	 	ontime4	8998.4998466969	Sum of GTIs [s]
date	2012-04-04T20:02:38	Date and time of file creation	ontime5	8998.450948298	Sum of GTIs [s]
revision	2	Processing version of data	ontime6	8998.4099082947	Sum of GTIs [s]
			ontime7	8998.4919883013	Sum of GTIs [s]
			ontime8	8998.3688682914	Sum of GTIs [s]
			ontime9	8998.3278282881	Sum of GTIs [s]
			l1events	173648	Number of level 1 events

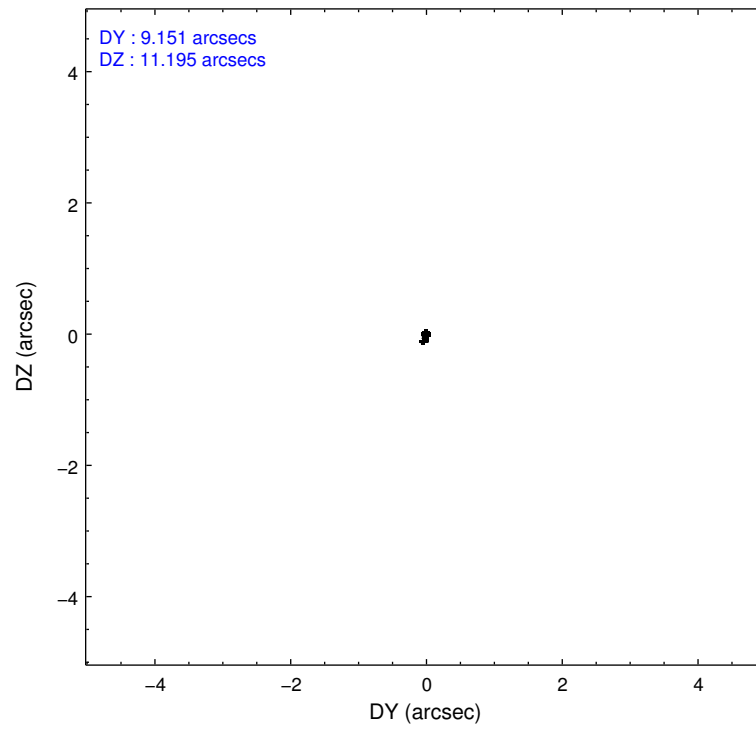
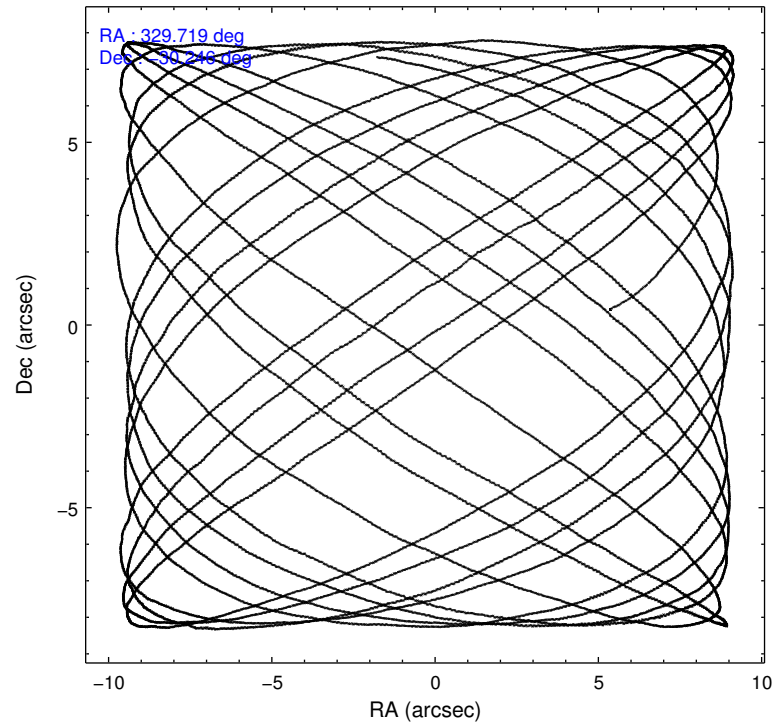
2.1.4 Events

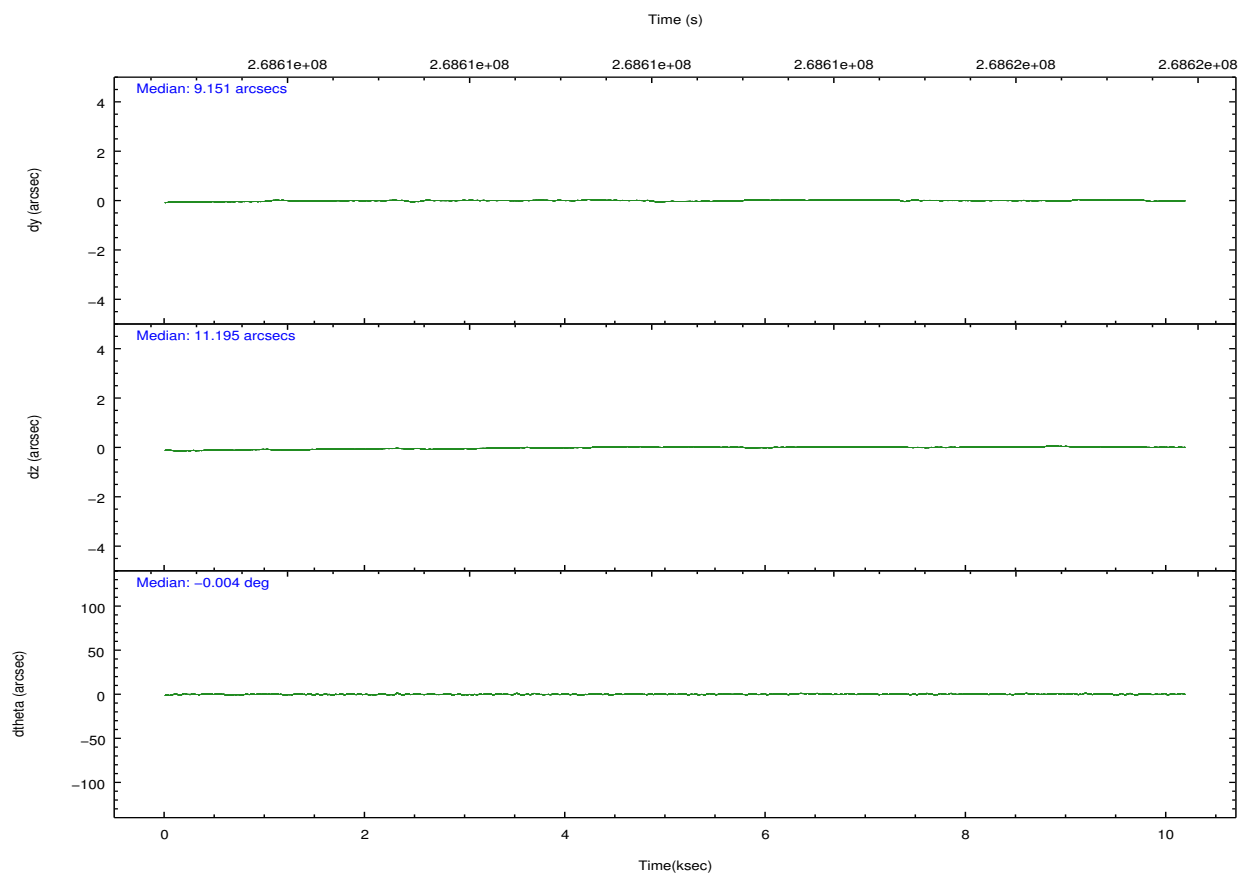
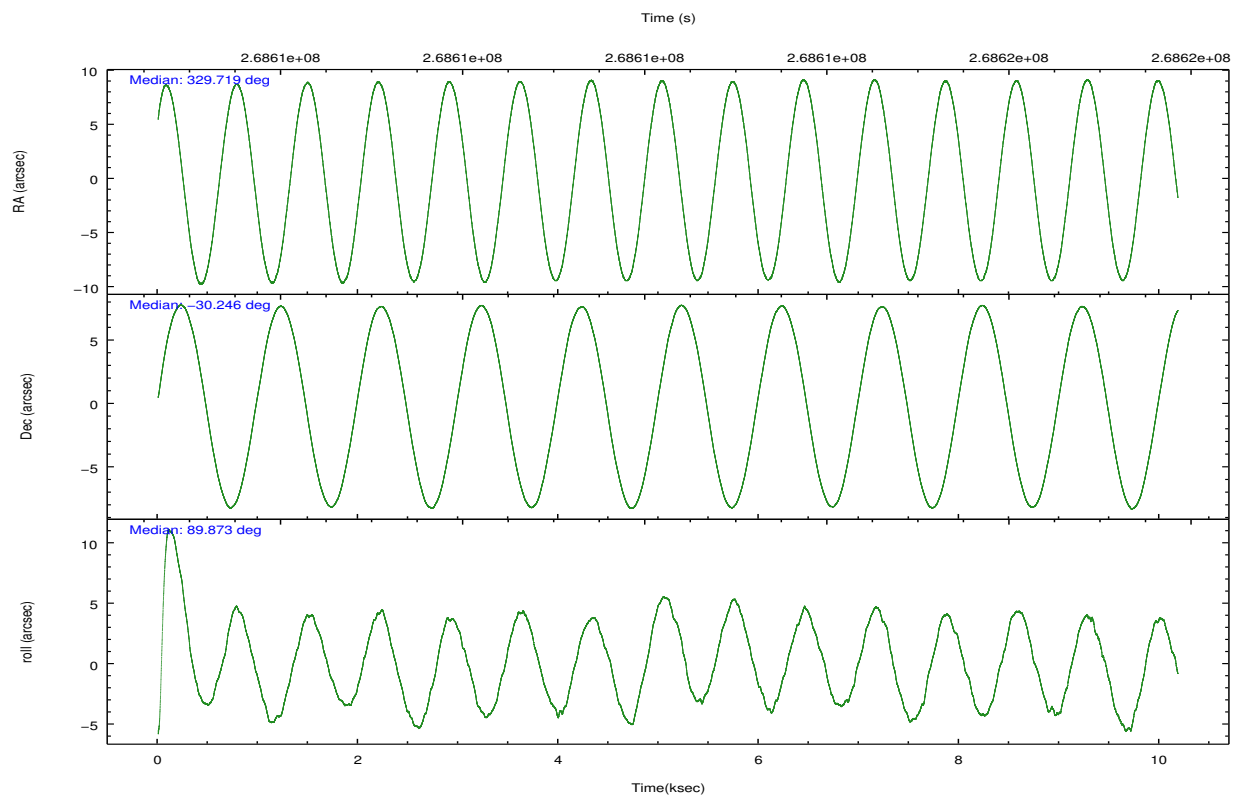
	ccd 4	ccd 5	ccd 6	ccd 7	ccd 8	ccd 9		ccd 4	ccd 5	ccd 6	ccd 7	ccd 8	ccd 9
level 1 events	15706	30231	30535	64077	19621	13478	grade 0 events	1144	8111	15173	12675	2502	1118
rejected events	13327	10928	11482	16865	14388	11312		7%	26%	49%	19%	12%	8%
rejected %	84%	36%	37%	26%	73%	83%	grade 1 events	9	1470	46	539	7	4
								0%	4%	0%	0%	0%	0%
							grade 2 events	411	3803	1870	11176	797	290
								2%	12%	6%	17%	4%	2%
							grade 3 events	274	1539	738	5173	498	263
								1%	5%	2%	8%	2%	1%
							grade 4 events	269	1338	711	5177	491	243
								1%	4%	2%	8%	2%	1%
							grade 5 events	464	2466	465	3477	567	466
								2%	8%	1%	5%	2%	3%
							grade 6 events	281	4516	562	13015	946	252
								1%	14%	1%	20%	4%	1%
							grade 7 events	12854	6988	10970	12845	13813	10842
								81%	23%	35%	20%	70%	80%

2.2 Compared Parameters

Parameter	Planned	Actual	Parameter	Planned	Actual
Instrument	ACIS	ACIS	Obspar format version number	7	7
Detector	ACIS-456789	ACIS-456789	Obspar file type	PREDICTED	ACTUAL
Grating	LETG	LETG	Obspar update status	NONE	UPDATED
Data mode	FAINT	FAINT	Number of optional ACIS chips dropped	0	0
Observation mode	POINTING	POINTING	On-chip summing requested	N	N
[deg] Pointing RA	329.734559	329.7185053588901	Subarray requested	CUSTOM	1/8
[deg] Pointing Dec	-30.269961	-30.24650459521066	Subarray start row	113	113
[deg] Pointing Roll	89.726104	89.87464771666816	Subarray row count	128	128
[mm] SIM focus pos	-0.684267	-0.6828225247311905	Alternating exposures requested	N	N
[mm] SIM defocus	0	0.001444936568705701	[s] Primary exposure time	0.000000	0.7
[mm] SIM translation stage pos	-182.132523	-182.1344861297048			
[mm] SIM translation stage offset	-8	-7.998036453302973			
[s] Observation start time (MET)	268607361.184000	268606875.18033			
Observation start date	2006-07-06T21:08:16	2006-07-06T21:01:15			
[s] Observation end time (MET)	268617361.184000	268617582.33084			
Observation end date	2006-07-06T23:54:56	2006-07-06T23:59:42			
Read mode	TIMED	TIMED			

2.3 Aspect



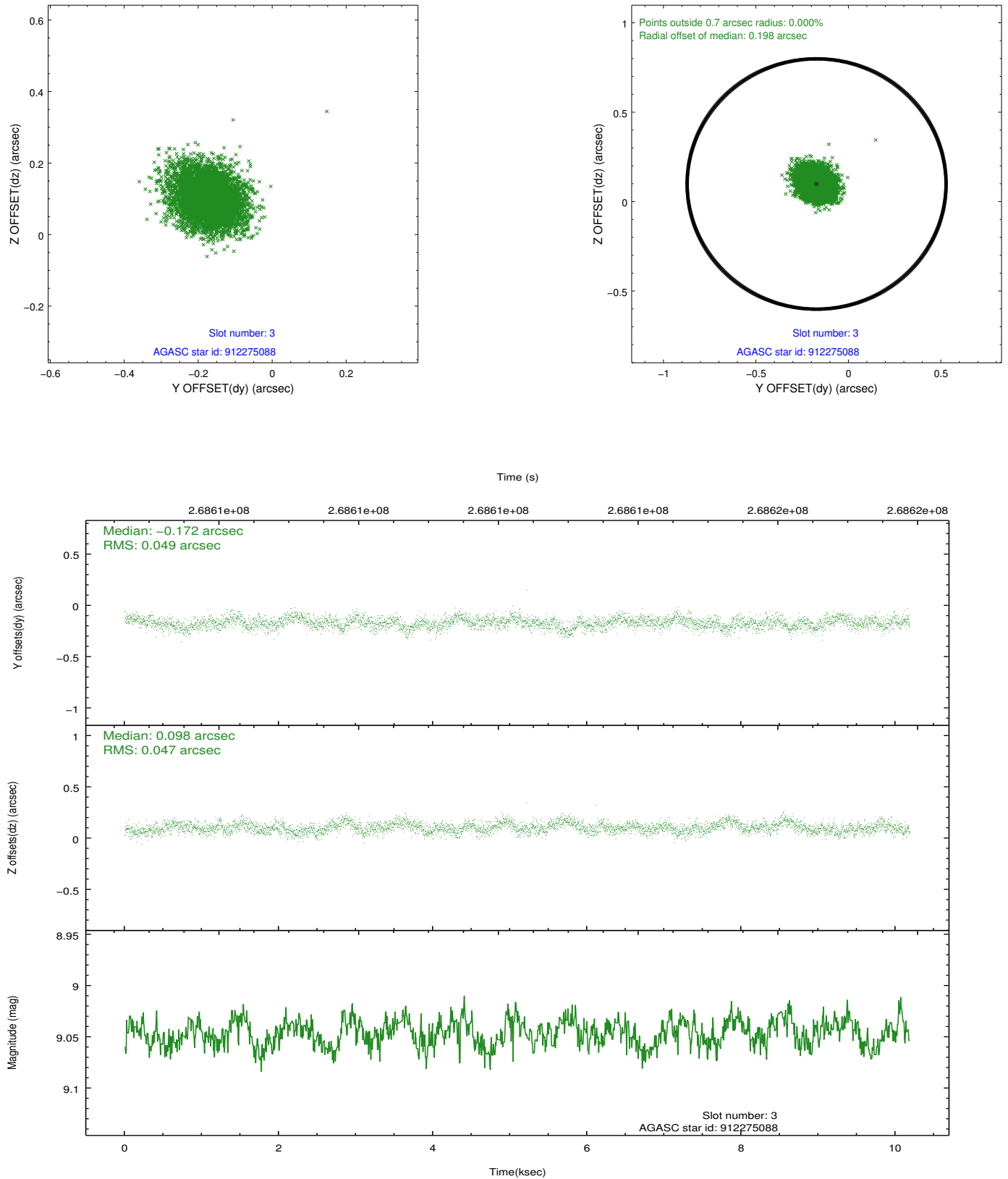


Slot Statistics

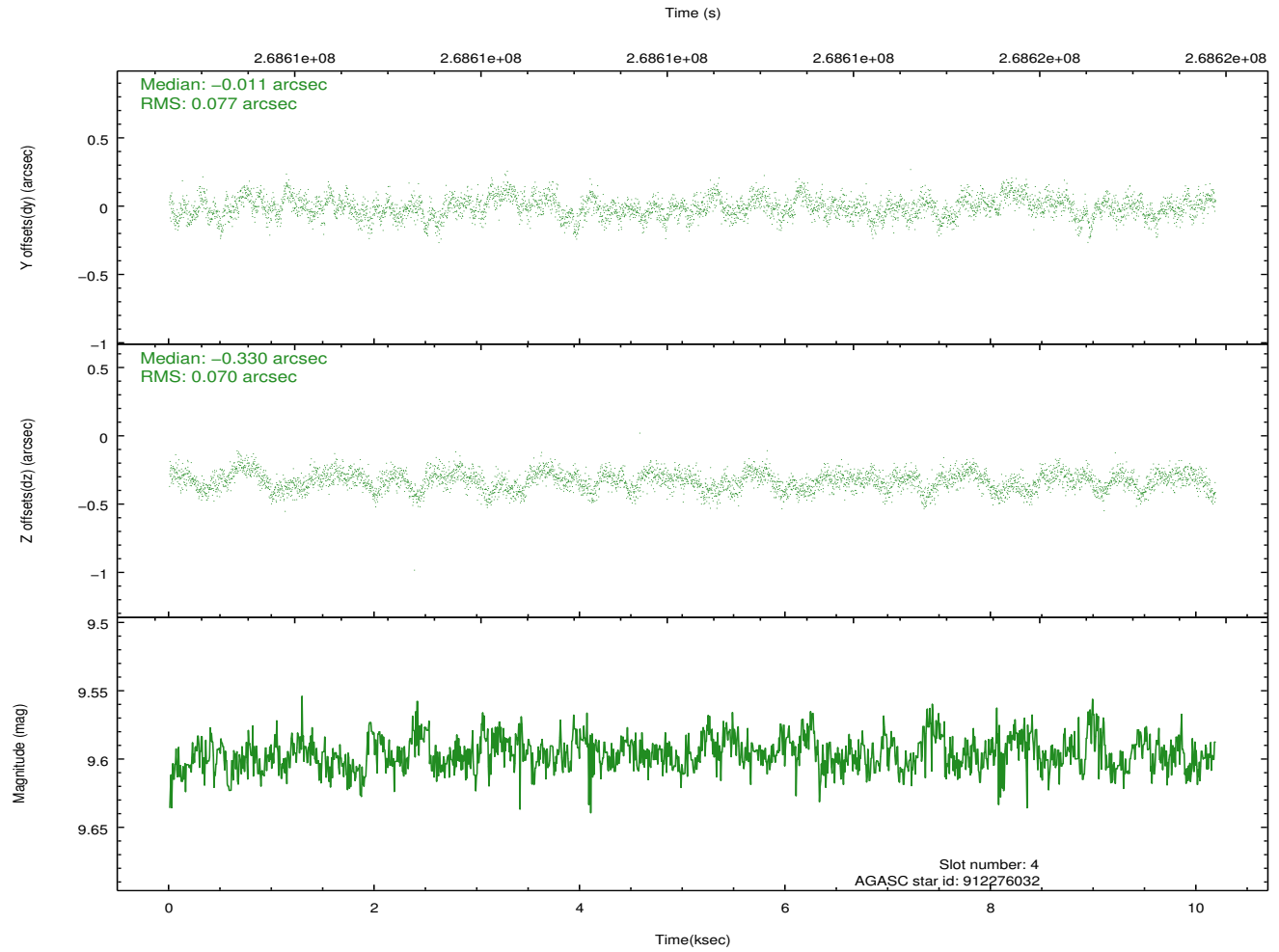
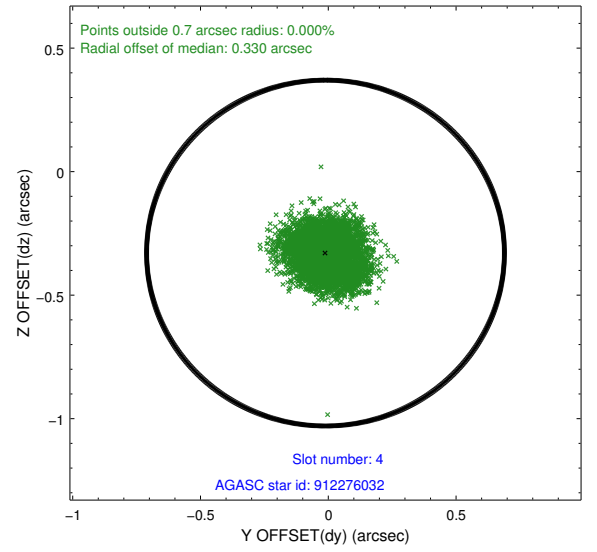
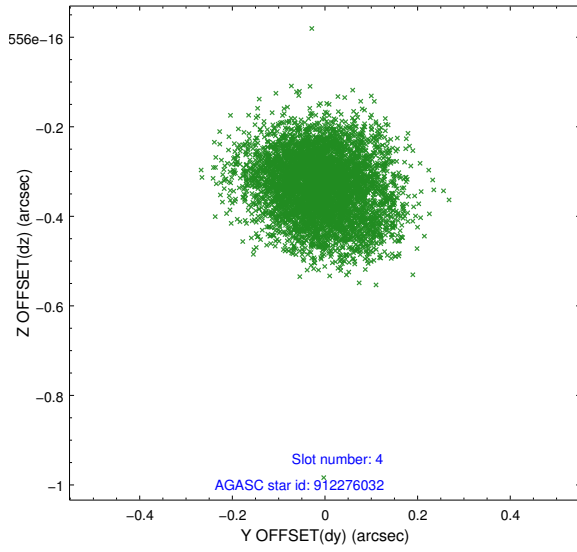
slot	status	id	mag	n_pts	med_dy	med_dz	dr1	dr2	ra	dec	mean_y	mean_z
0	FID	ACIS-S-2	7.09	2484	-0.054	-0.152	0.007	0.013	0.000000	0.000000	-761.44	-1897.36
1	FID	ACIS-S-4	7.18	2484	0.162	0.067	0.006	0.011	0.000000	0.000000	2151.82	10.71
2	FID	ACIS-S-5	7.23	2484	-0.139	0.093	0.007	0.012	0.000000	0.000000	-1813.70	5.01
3	GUIDE	912275088	9.05	4964	-0.172	0.098	0.072	0.118	329.619228	-29.738698	1910.37	370.03
4	GUIDE	912276032	9.60	4960	-0.011	-0.330	0.112	0.179	329.395967	-29.803466	1673.03	1065.76
5	GUIDE	981468128	9.36	4961	0.132	0.446	0.099	0.158	329.756350	-30.158334	402.47	-65.16
6	GUIDE	981471664	6.35	4968	-0.024	-0.261	0.053	0.087	328.981826	-30.605916	-1228.56	2326.09
7	GUIDE	981475568	8.19	4966	0.076	0.042	0.074	0.127	328.999408	-30.923402	-2370.78	2259.88

2.4 Star Slots

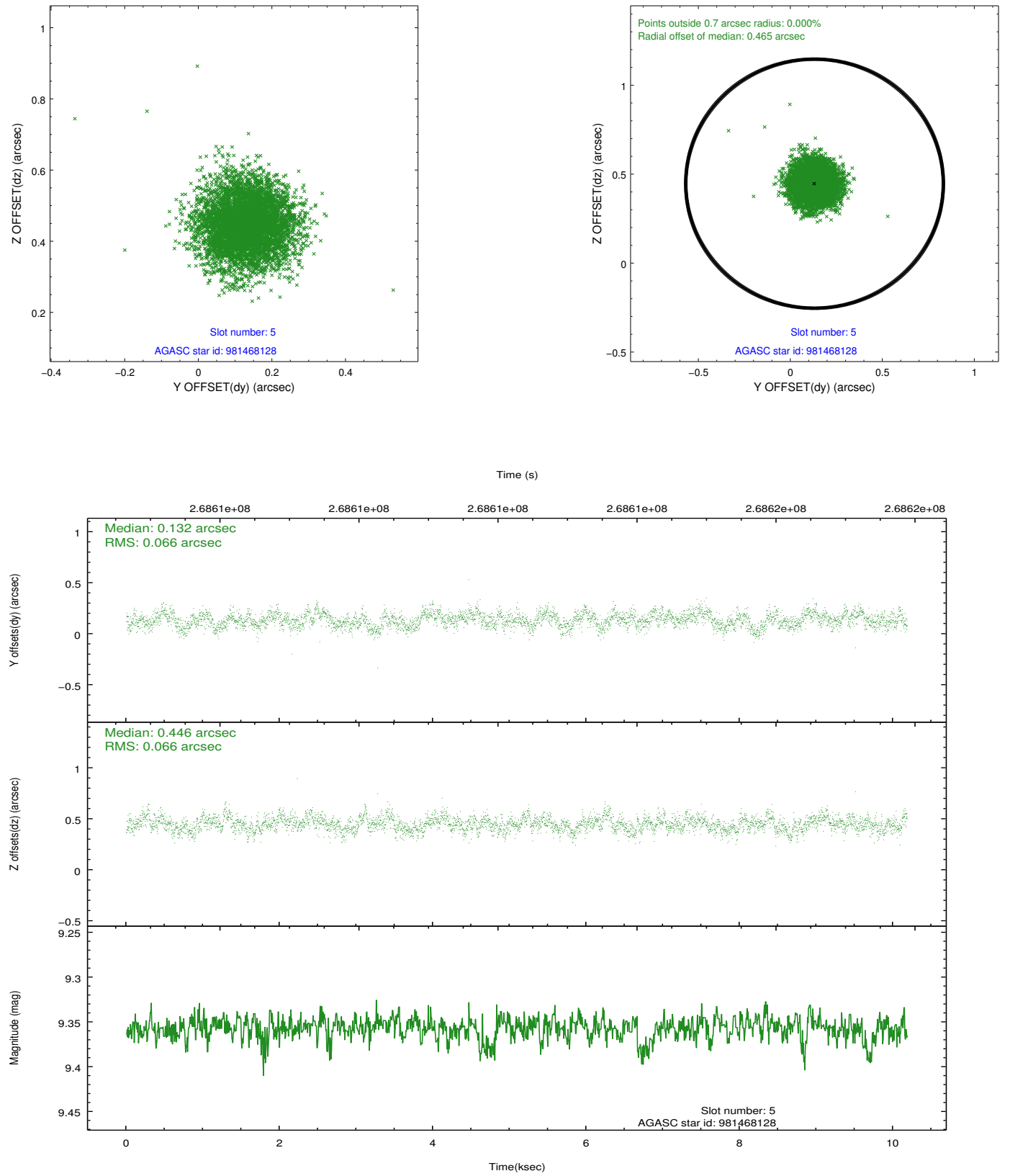
2.4.1 Slot 3



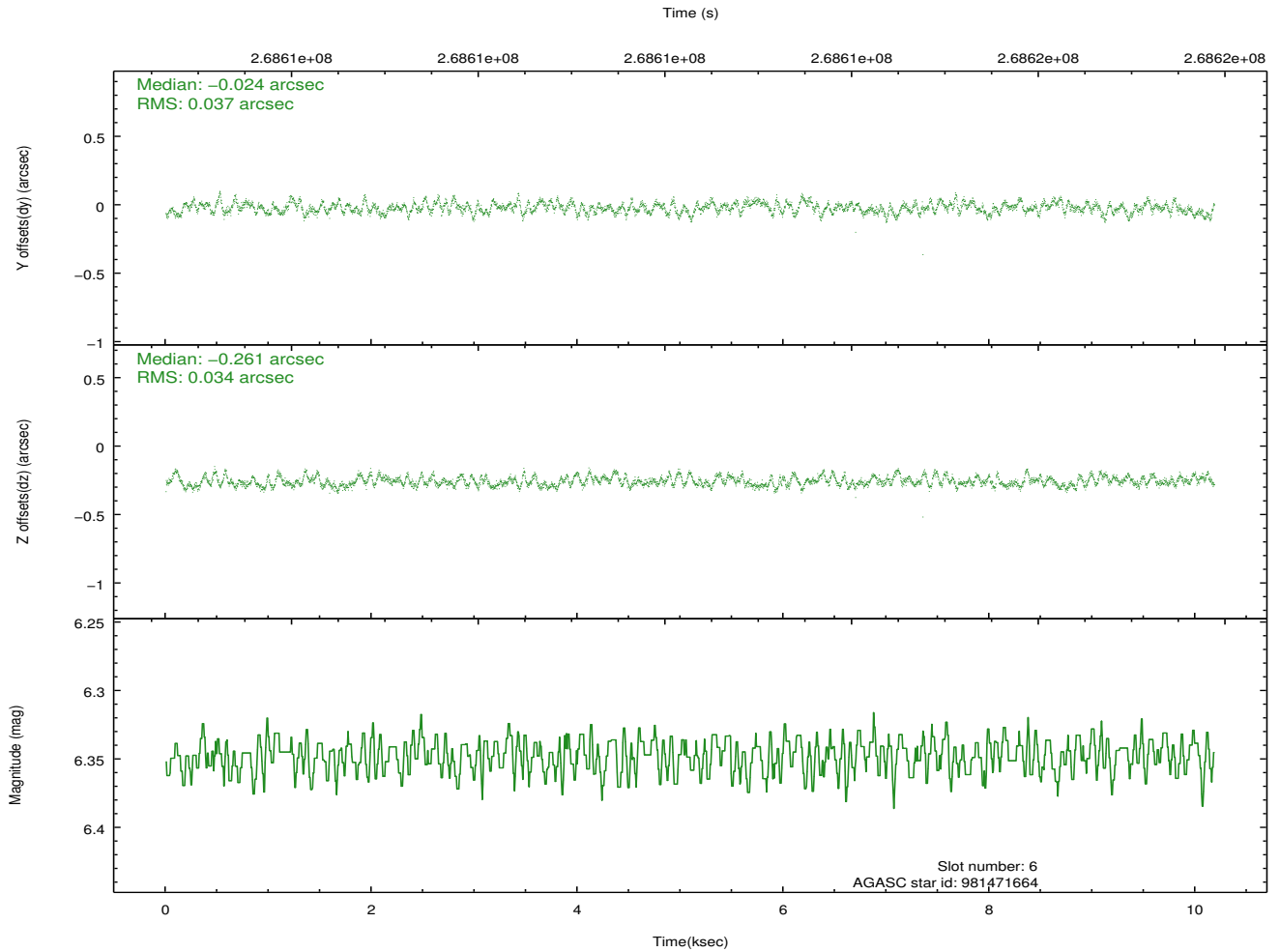
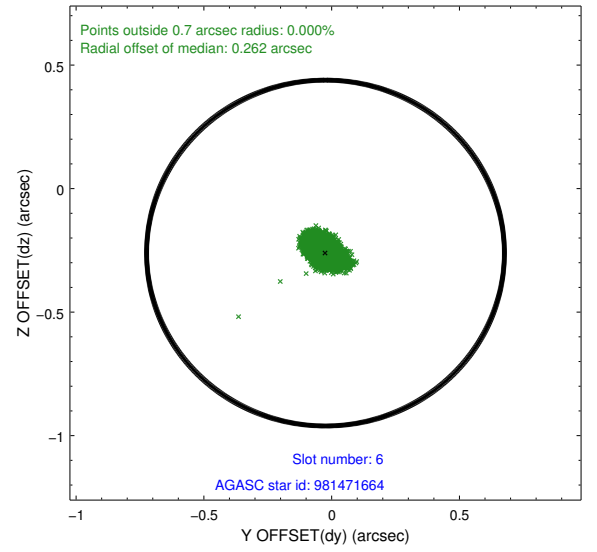
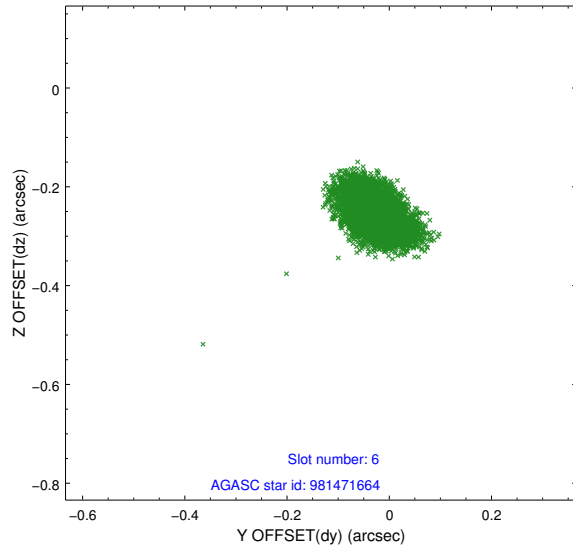
2.4.2 Slot 4



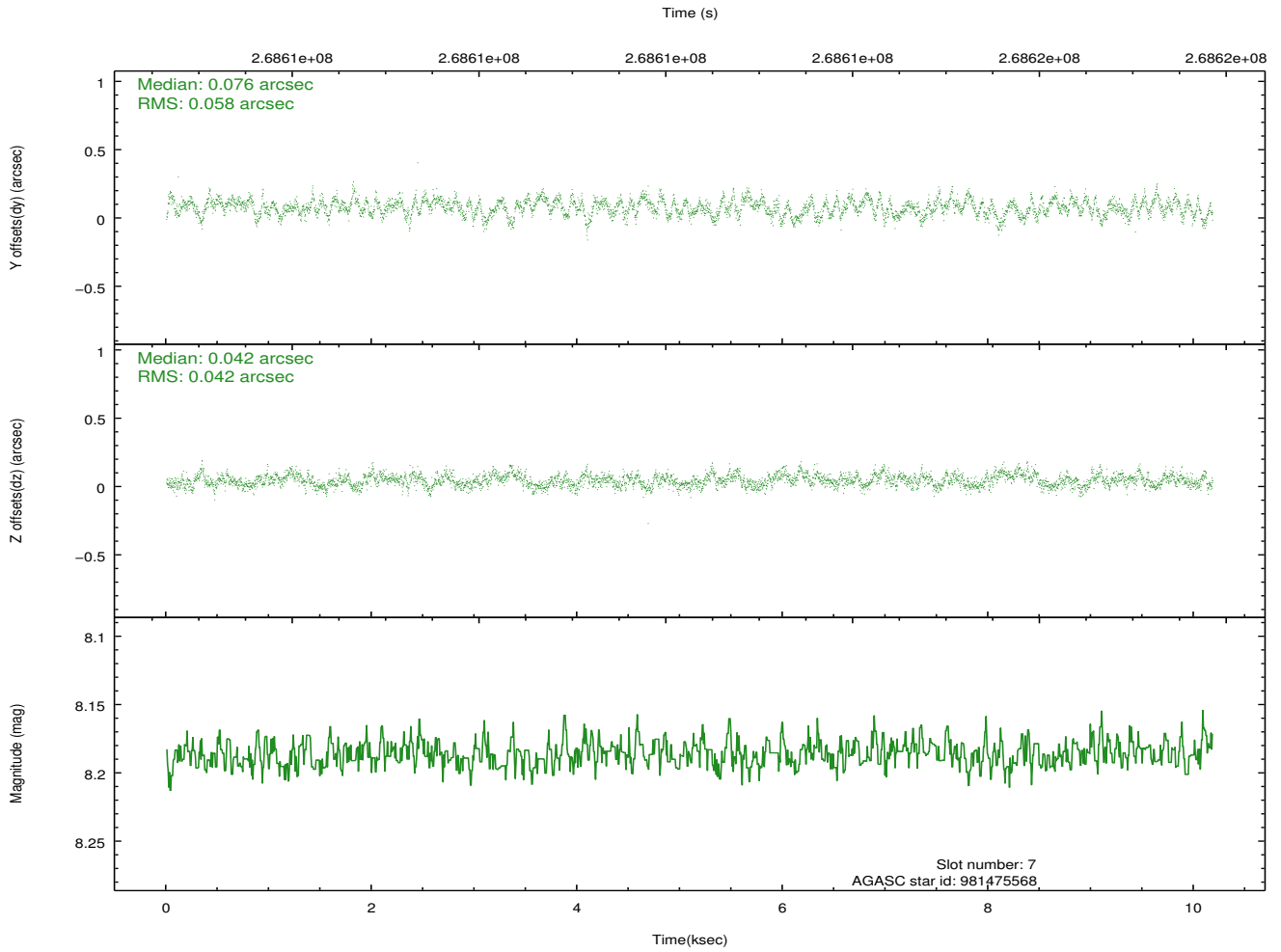
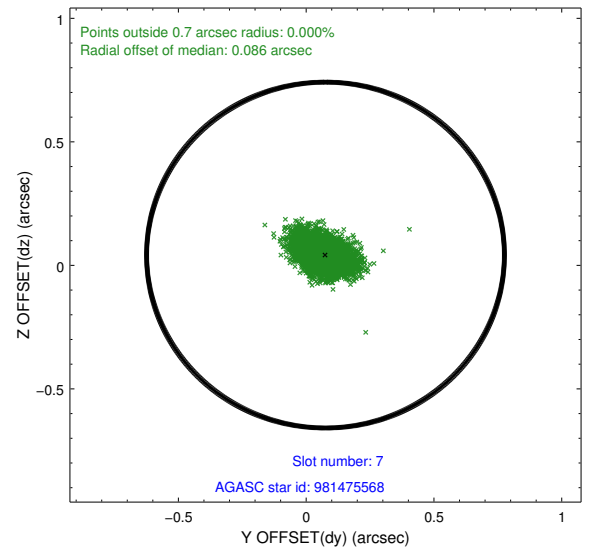
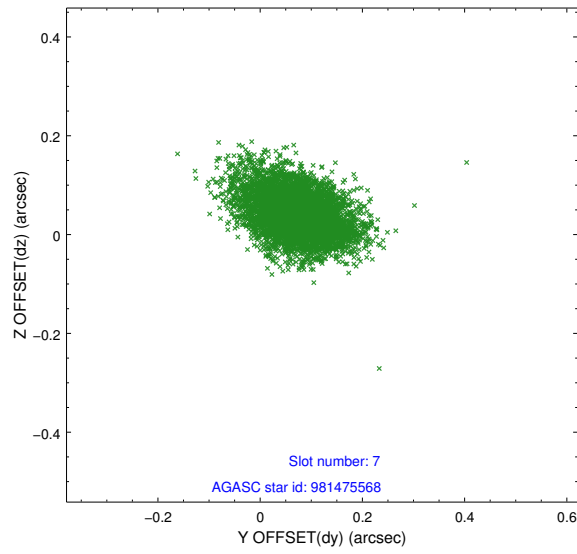
2.4.3 Slot 5



2.4.4 Slot 6

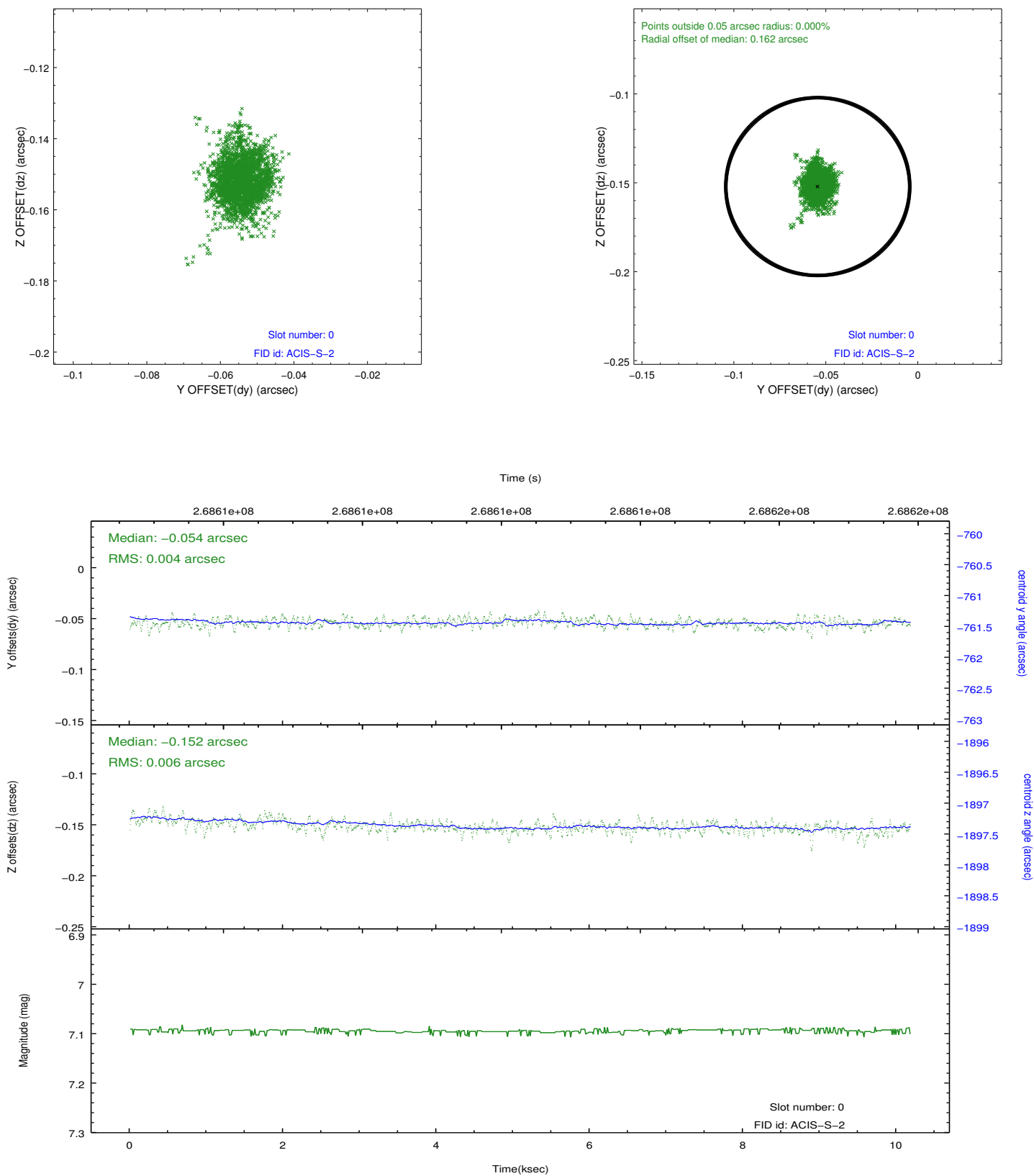


2.4.5 Slot 7

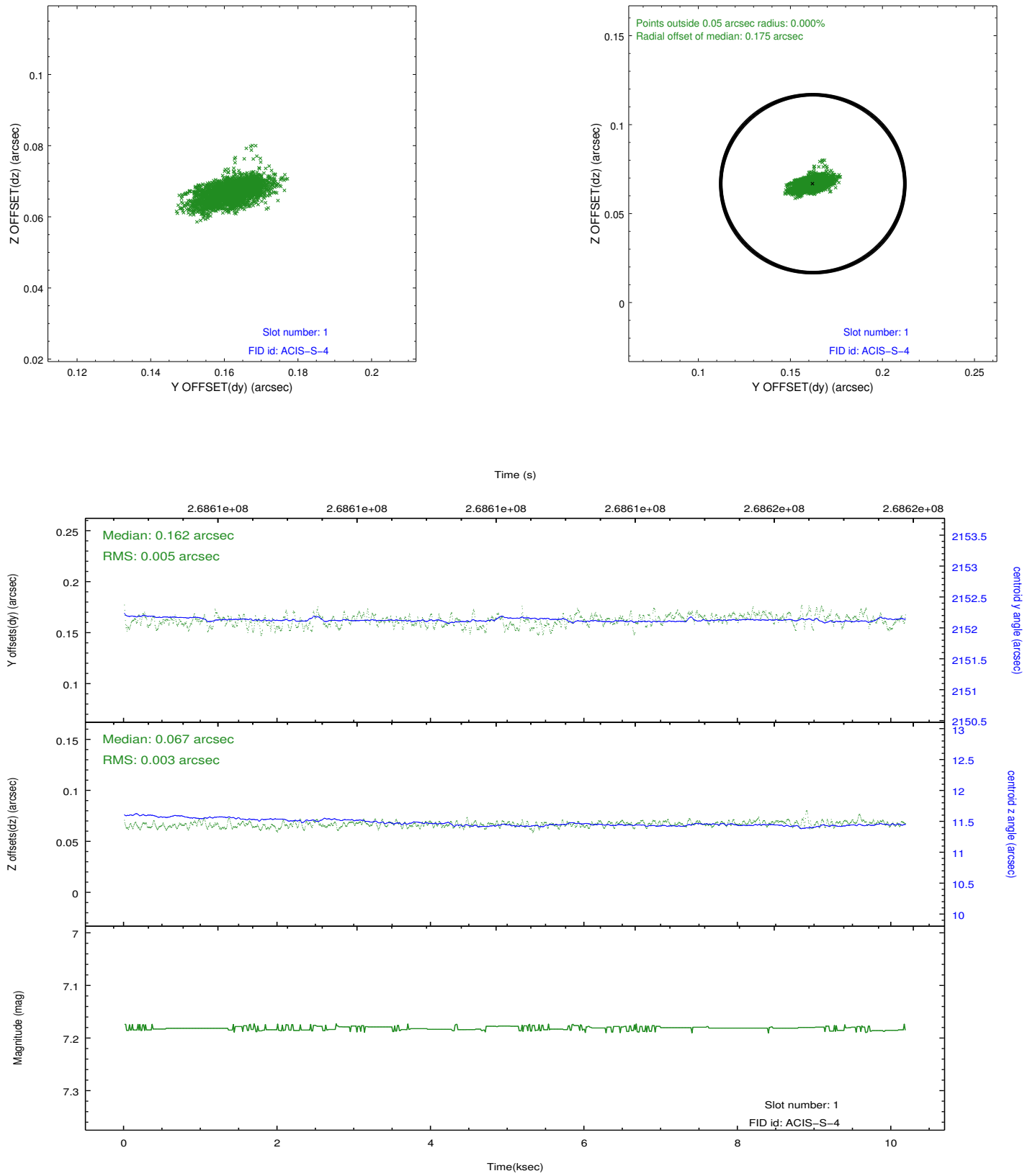


2.5 FID Slots

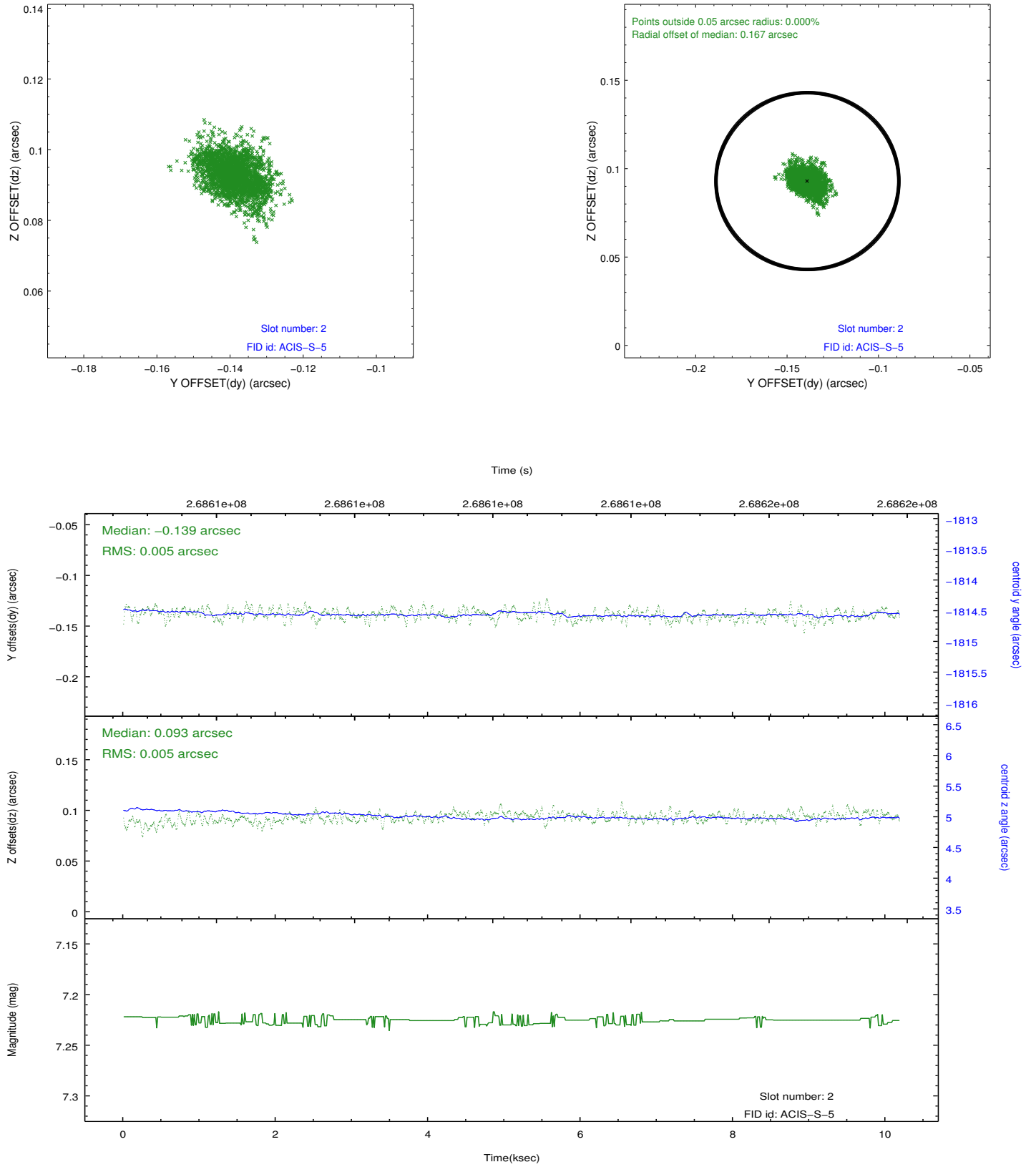
2.5.1 Slot 0



2.5.2 Slot 1

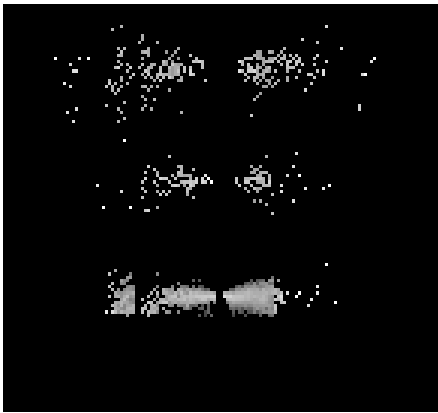


2.5.3 Slot 2

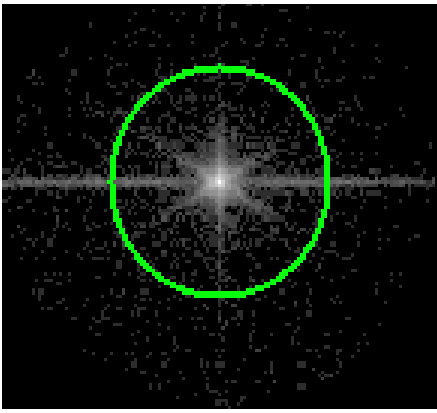


3 Gratings

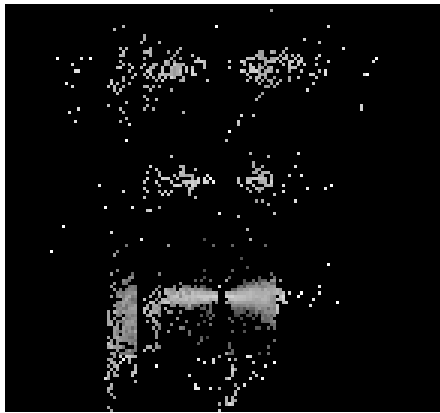
3.1 LETG Arm



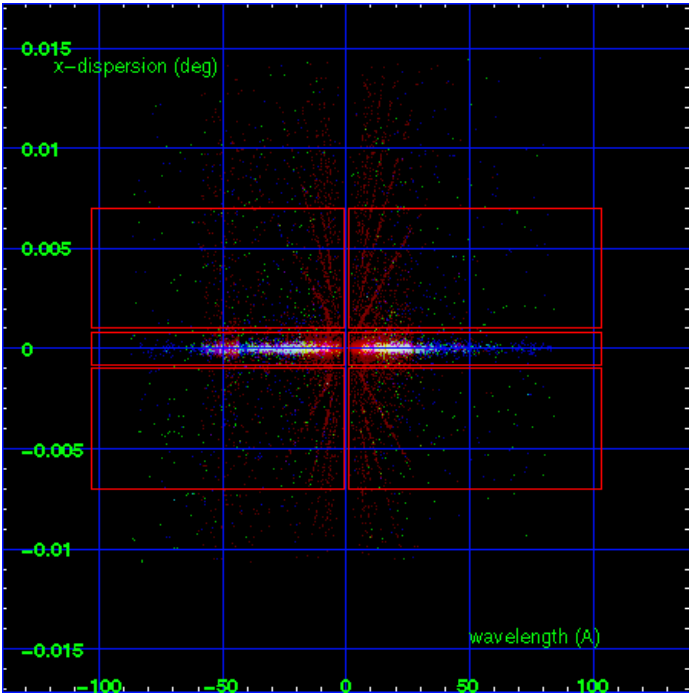
LETG Order Sort 123



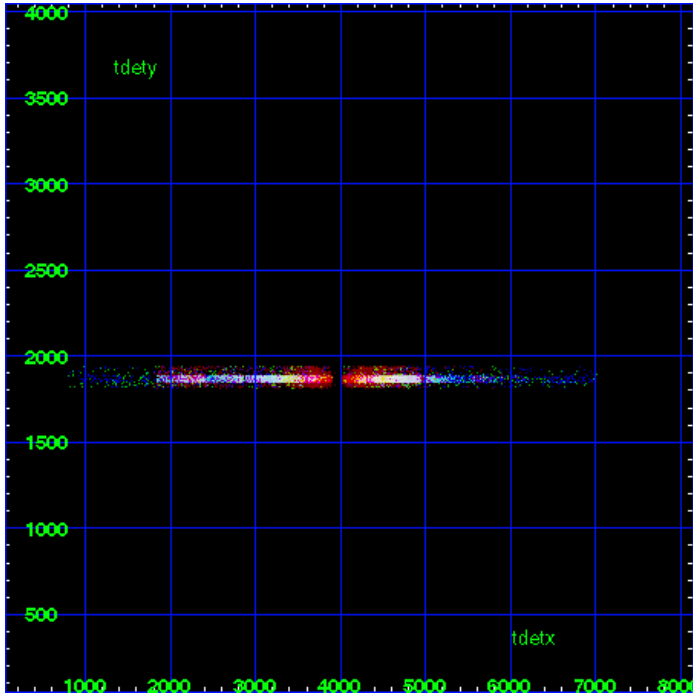
LETG Zero Order



LETG Order Sort ALL

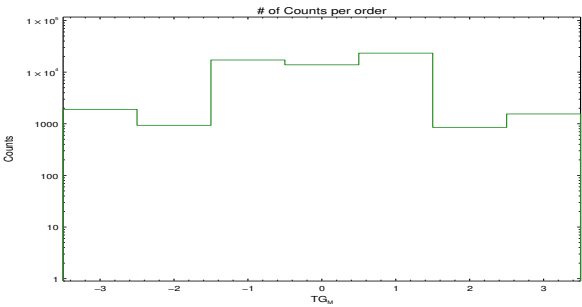


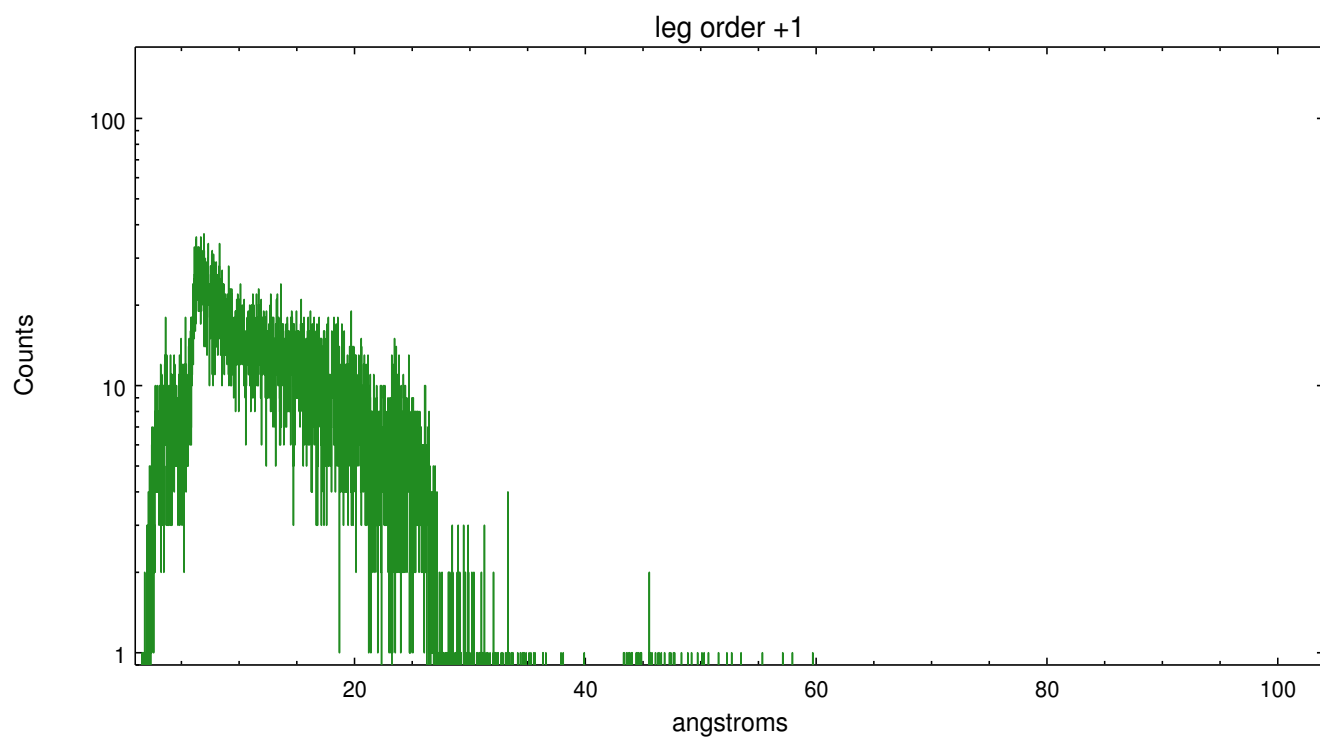
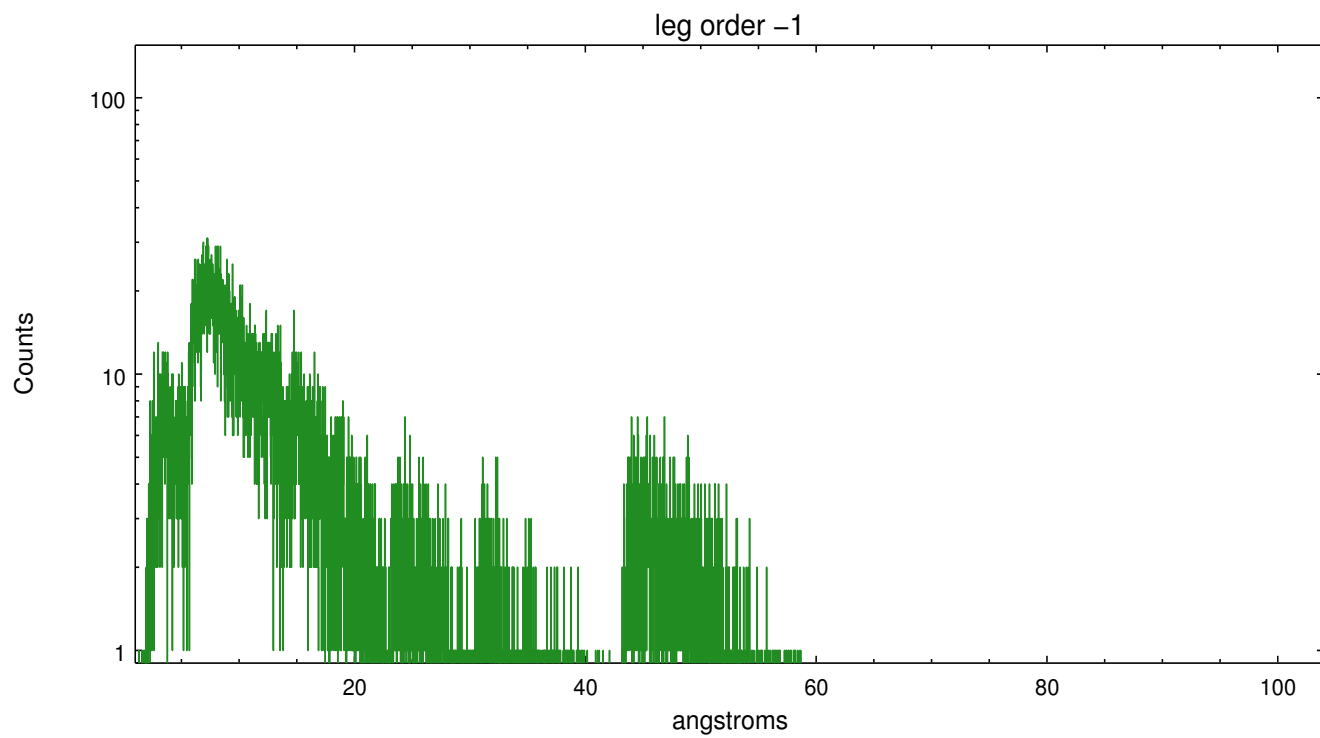
Spot Image LETG



Full Detector LETG

	order -3	order -2	order -1	order 0	order 1	order 2	order 3
Events	1901	933	17188	13858	23332	852	1550





A Summary

A.1 Status

V&V Scientist	Joy Nichols
V&V Date (YYYY-MM-DD)	2012.04.05
V&V Edition	1
V&V Disposition and Status	OK
V&V Charge Time	8.998

A.2 Comments