

V&V Reference Report

L2 ASCDS Version : 8.4.3

Observation 6742 - L2 Version 4
Chandra X-Ray Center

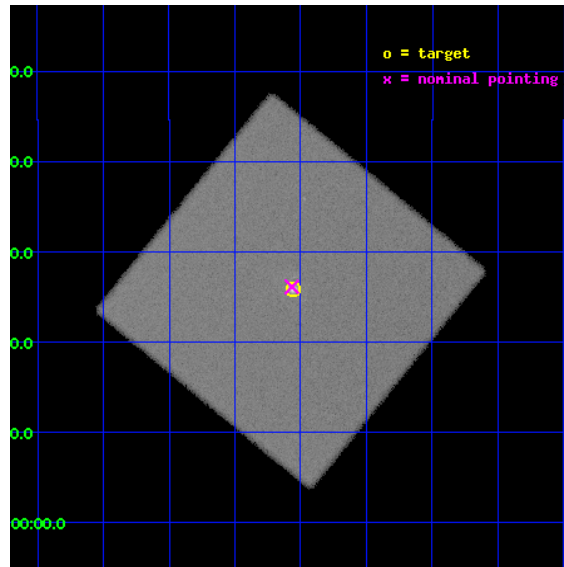
L2 Processing Date : Aug 10 2012

Contents

1	Front	2
2	OBI	3
2.1	OBI	3
2.1.1	Images	3
2.1.2	Parameters	4
2.1.3	Events	4
2.2	Compared Parameters	5
2.3	Aspect	6
2.4	Star Slots	9
2.4.1	Slot 3	9
2.4.2	Slot 4	10
2.4.3	Slot 5	11
2.4.4	Slot 6	12
2.4.5	Slot 7	13
2.5	FID Slots	14
2.5.1	Slot 0	14
2.5.2	Slot 1	15
2.5.3	Slot 2	16
A	Summary	17
A.1	Status	17
A.2	Comments	17

1 Front

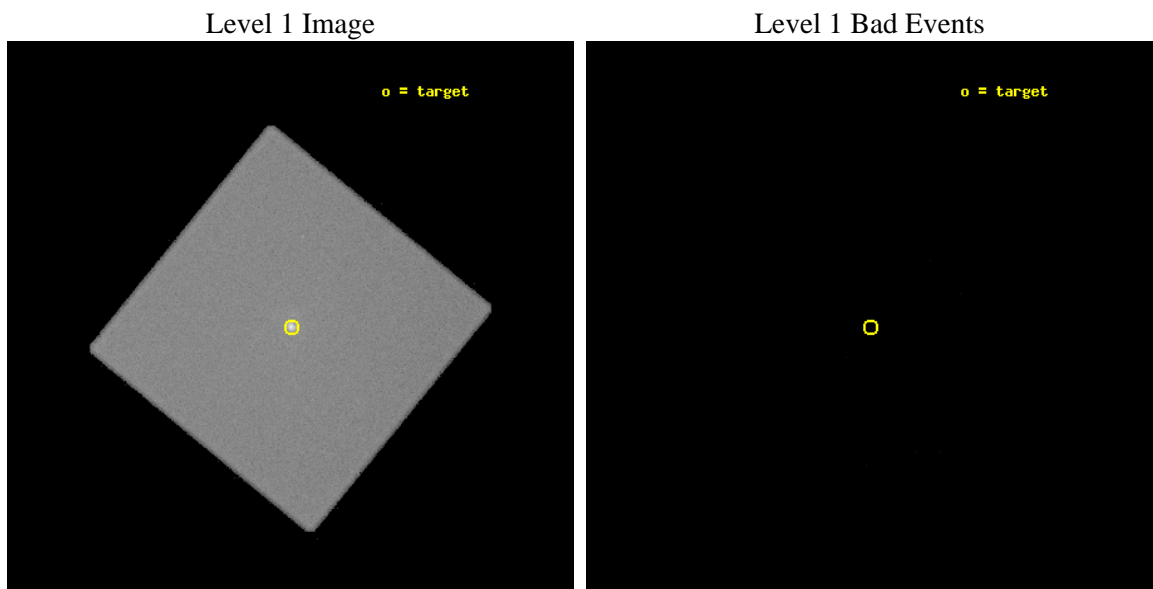
seq_num	590425	Sequence number
obs_id	6742	Observation id
title	AO7 Observations of the Standard Candles Cas A and G21.5-09	Propos
observer	Dr. CXC Calibration	Principal investigator
object	G21.5-09	Source name
ra_targ	278.389583	Observer's specified target RA [deg]
dec_targ	-10.568528	Observer's specified target Dec [deg]
ra_nom	278.39164975672	Nominal RA [deg]
dec_nom	-10.564946256679	Nominal Dec [deg]
roll_nom	84.256967793129	Nominal Roll [deg]
revision	4	Processing version of data
ontime	20181.354061574	[s]
livetime	20017.112703407	Ontime multiplied by DTCOR
l2events	913877	Number of level 2 events



2 OBI

2.1 OBI

2.1.1 Images



2.1.2 Parameters

obi_num	0	Obi number	sched_exp_time	20000.000000	[s] Scheduled observation exposure time
ascdsver	8.4.5	Processing system revision	ontime	20181.482187837	[s]
caldbver	4.5.1.1	 	l1events	1384928	Number of level 1 events
date	2012-08-11T00:37:21	Date and time of file creation			
revision	4	Processing version of data			

2.1.3 Events

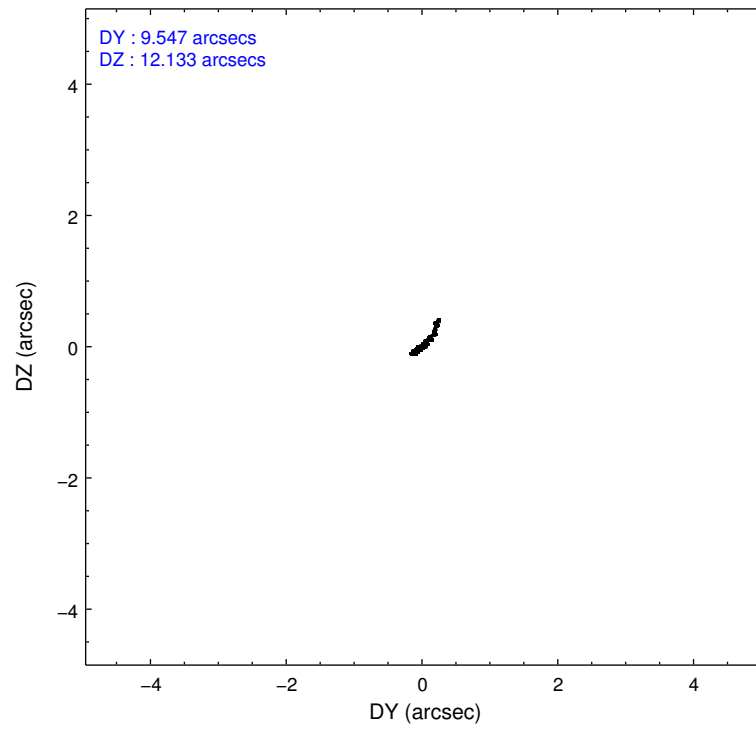
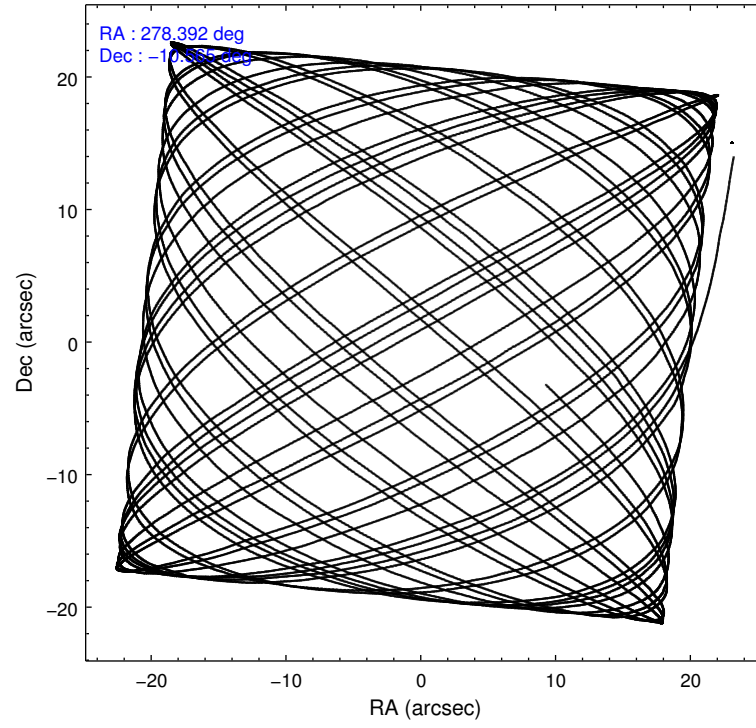
Level 1 Events

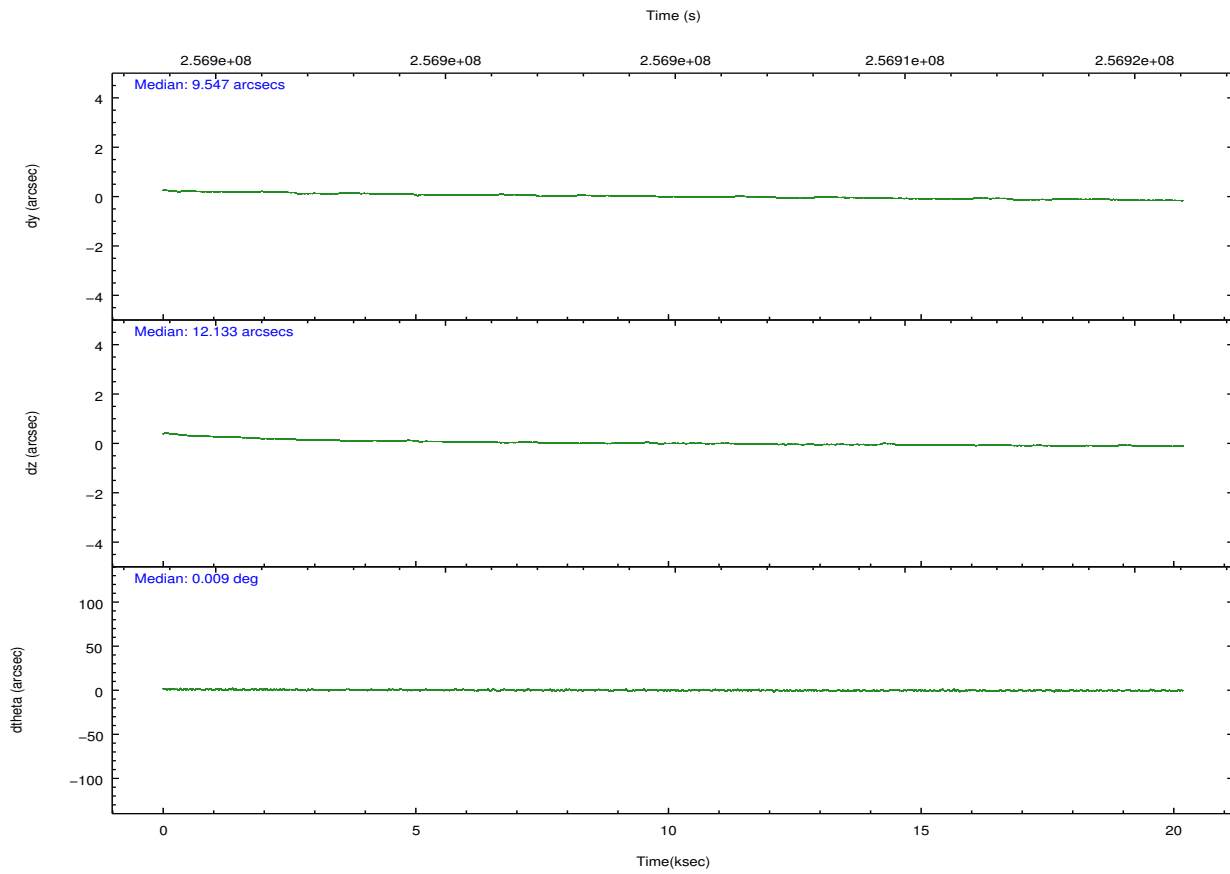
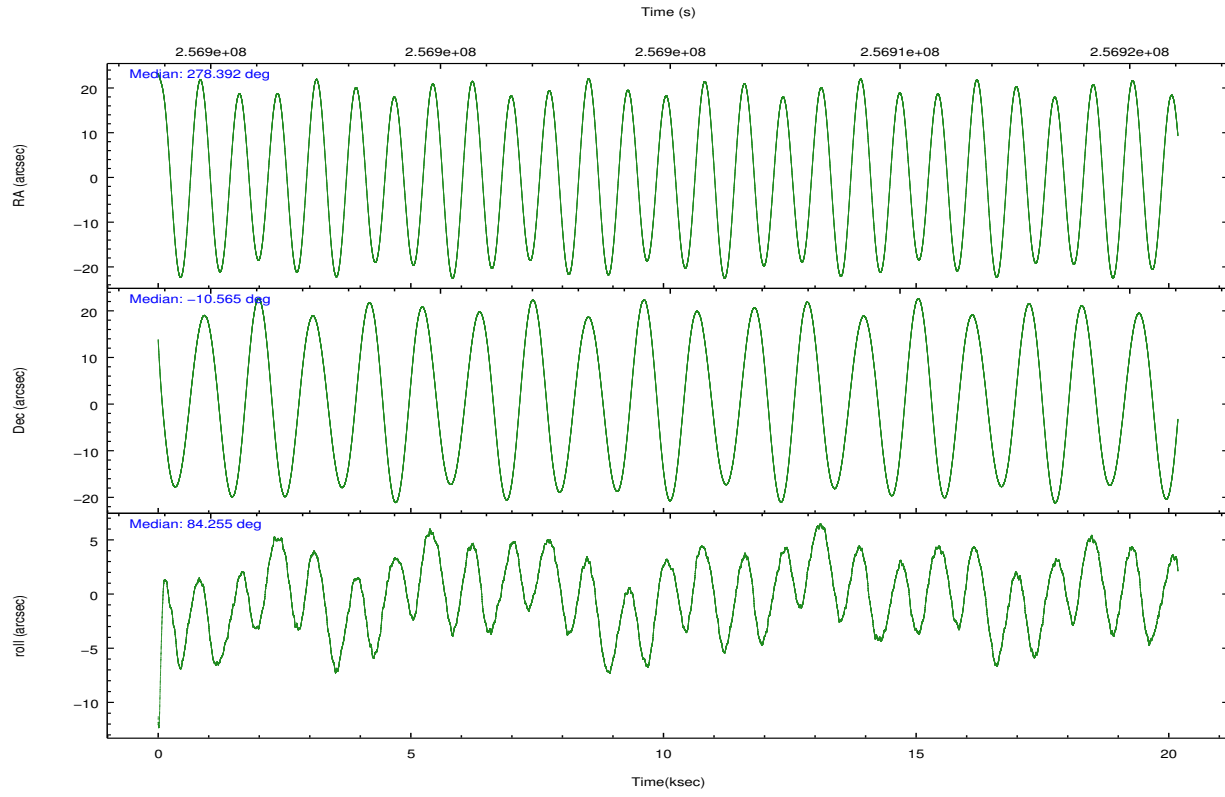
	segment 0
level 1 events	1384928
rejected events	32129
rejected %	2%

2.2 Compared Parameters

Parameter	Planned	Actual	Parameter	Planned	Actual
Instrument	HRC	HRC	Obspar format version number	7	7
Detector	HRC-I	HRC-I	Obspar file type	PREDICTED	ACTUAL
Grating	NONE	NONE	Obspar update status	NONE	UPDATED
Data mode	OBSERVING	OBSERVING			
Observation mode	POINTING	POINTING			
[deg] Pointing RA	278.403507	278.3916497567232			
[deg] Pointing Dec	-10.589312	-10.56494625667892			
[deg] Pointing Roll	84.354639	84.25696779312925			
[s] Window start time (MET)	255139265.184000	255139265.184000			
[s] Window stop time (MET)	270604865.184000	270604865.184000			
[mm] SIM focus pos	-1.040293	-1.038866356238299			
[mm] SIM defocus	0	0.001426264420575141			
[mm] SIM translation stage pos	126.985494	126.9829799899862			
[mm] SIM translation stage offset	0	0.002508901615314585			
[s] Observation start time (MET)	256895046.184000	256894373.88409			
Observation start date	2006-02-21T07:43:01	2006-02-21T07:32:53			
[s] Observation end time (MET)	256915046.184000	256915269.53506			
Observation end date	2006-02-21T13:16:21	2006-02-21T13:21:09			

2.3 Aspect



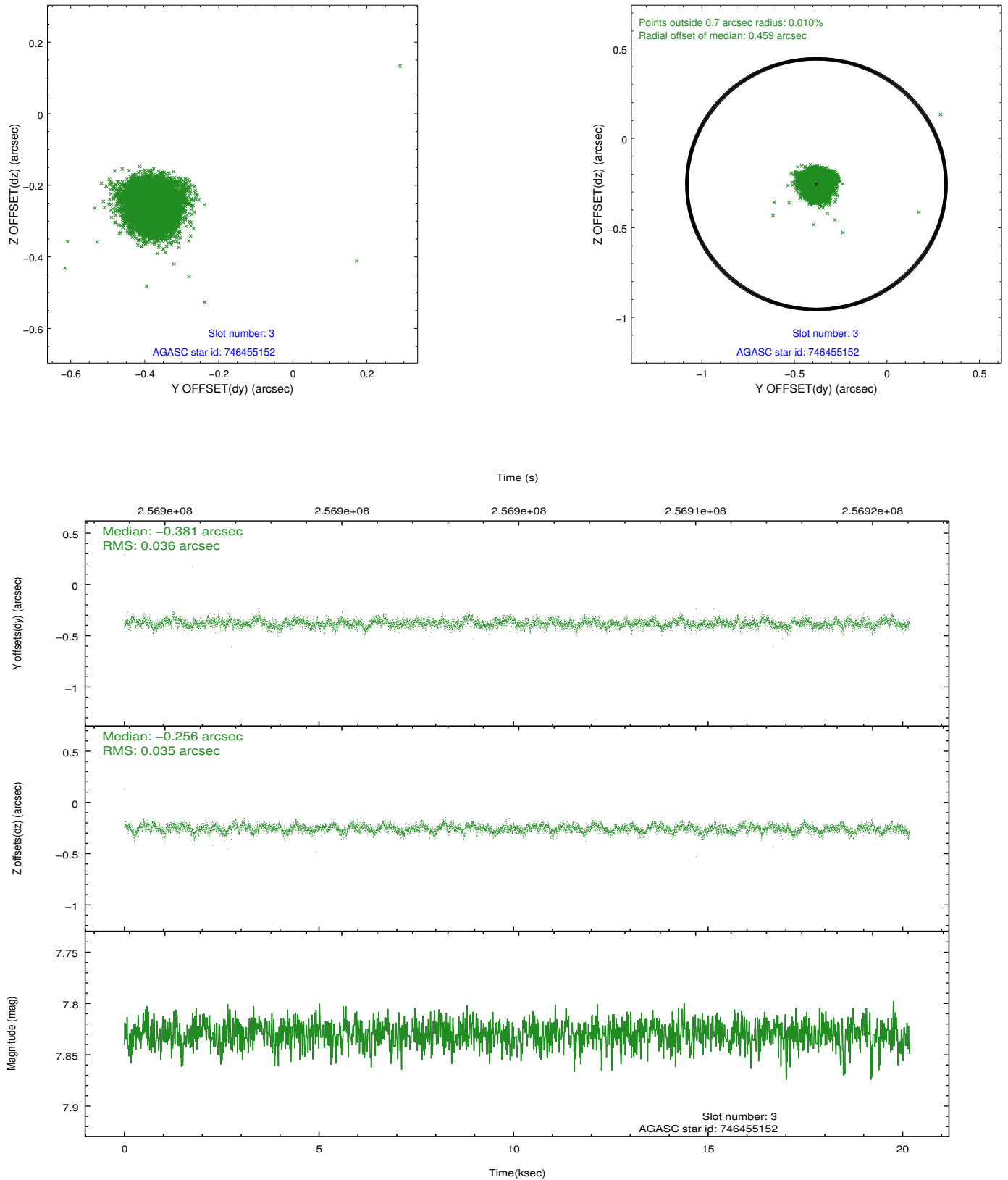


Slot Statistics

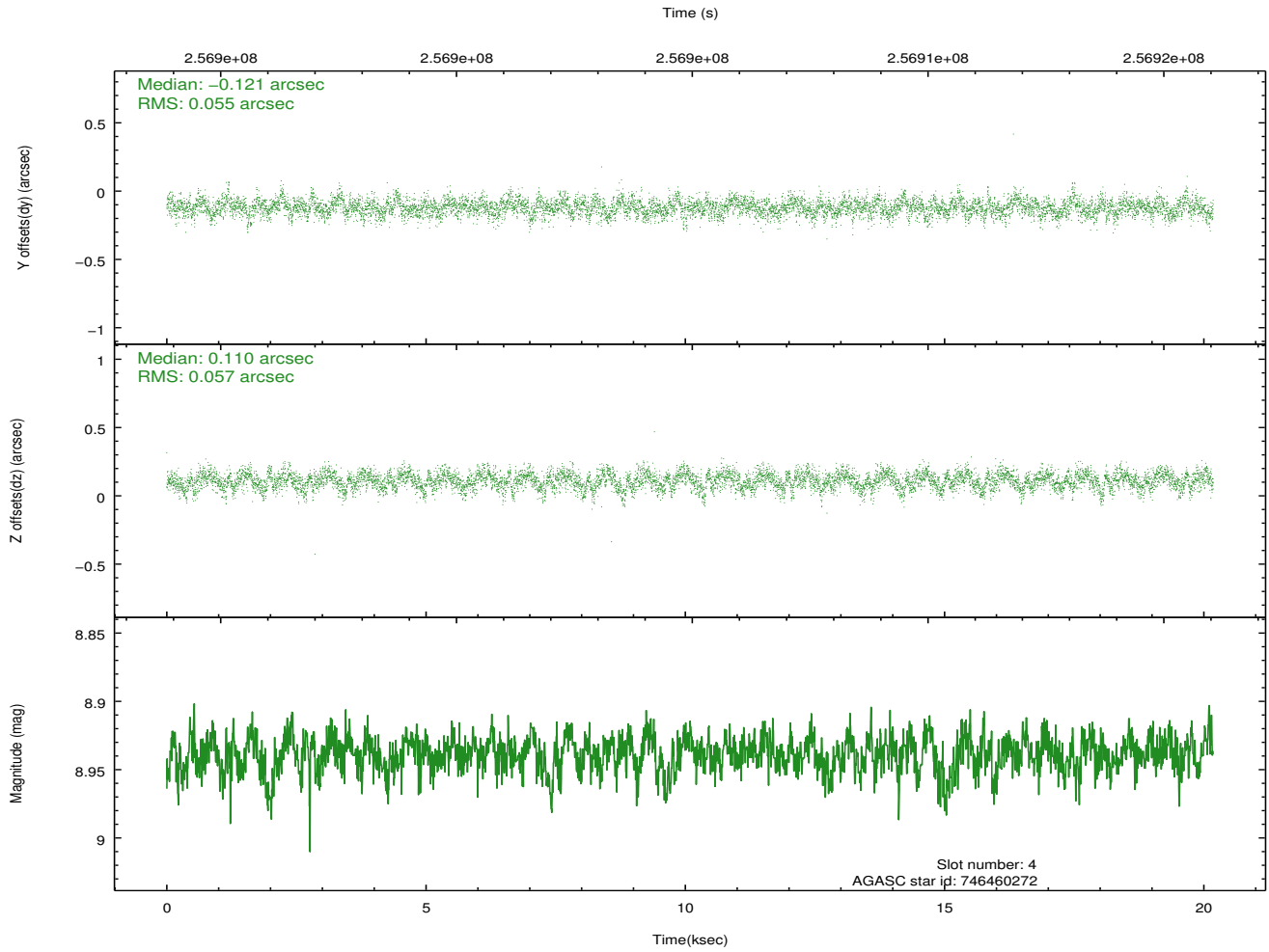
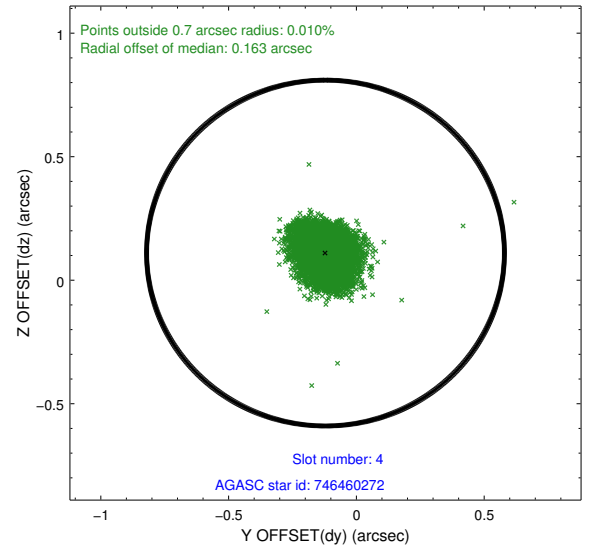
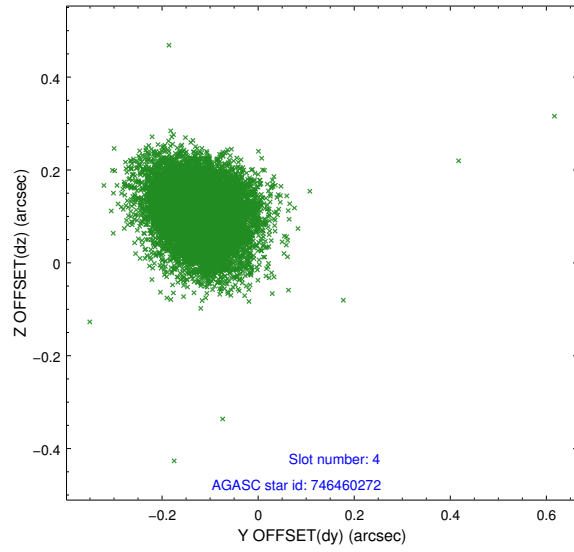
slot	status	id	mag	n_pts	med_dy	med_dz	dr1	dr2	ra	dec	mean_y	mean_z
0	FID	HRC-I-1	7.01	4923	-0.016	0.020	0.007	0.012	0.000000	0.000000	-765.23	-1300.13
1	FID	HRC-I-2	7.05	4922	0.170	-0.125	0.007	0.012	0.000000	0.000000	847.43	-1302.12
2	FID	HRC-I-3	7.10	4923	-0.035	0.016	0.006	0.011	0.000000	0.000000	-1193.56	1004.17
3	GUIDE	746455152	7.83	9845	-0.381	-0.256	0.052	0.085	278.447893	-9.976732	2210.47	60.50
4	GUIDE	746460272	8.94	9845	-0.121	0.110	0.082	0.137	278.847488	-10.152127	1720.86	-1410.48
5	GUIDE	746462392	8.54	9845	0.167	0.130	0.091	0.143	279.038421	-10.890715	-861.23	-2341.19
6	GUIDE	746462456	8.39	9842	0.101	-0.052	0.066	0.110	278.652171	-10.530173	298.12	-855.11
7	GUIDE	746462680	9.02	9762	0.236	0.071	0.085	0.147	278.660755	-10.782756	-602.82	-973.55

2.4 Star Slots

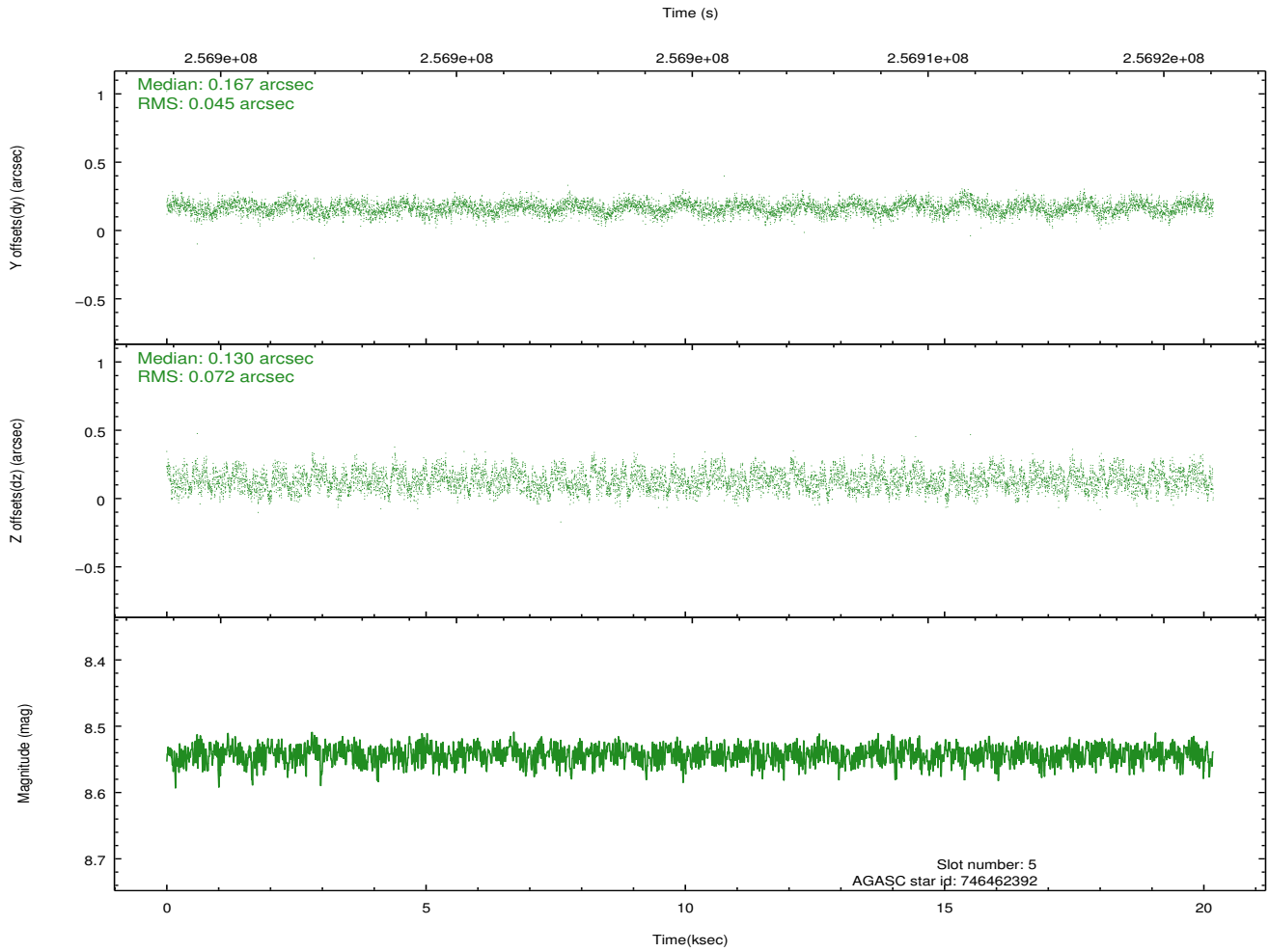
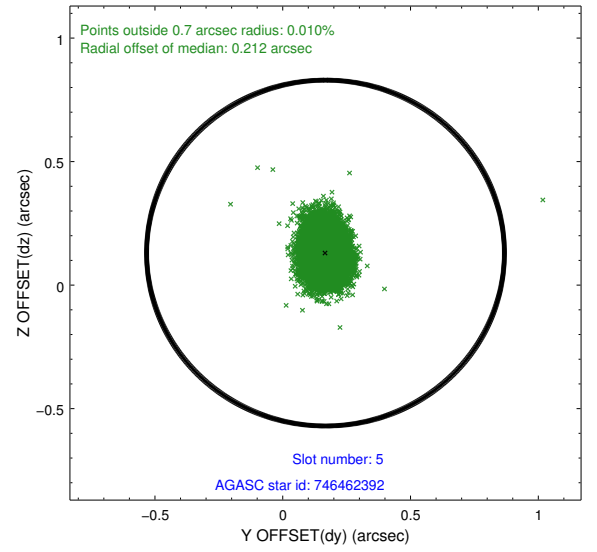
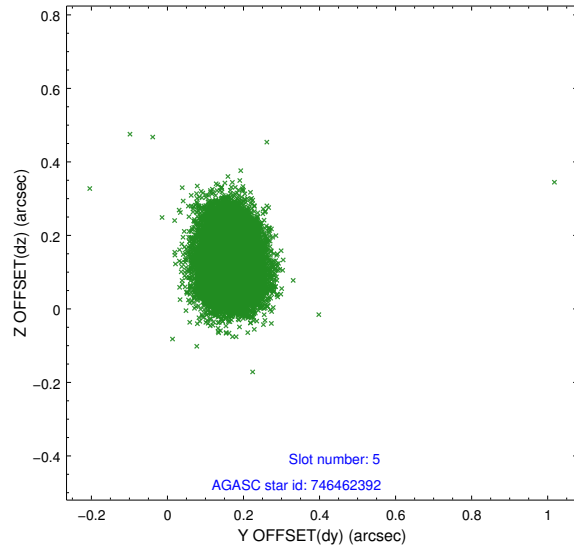
2.4.1 Slot 3



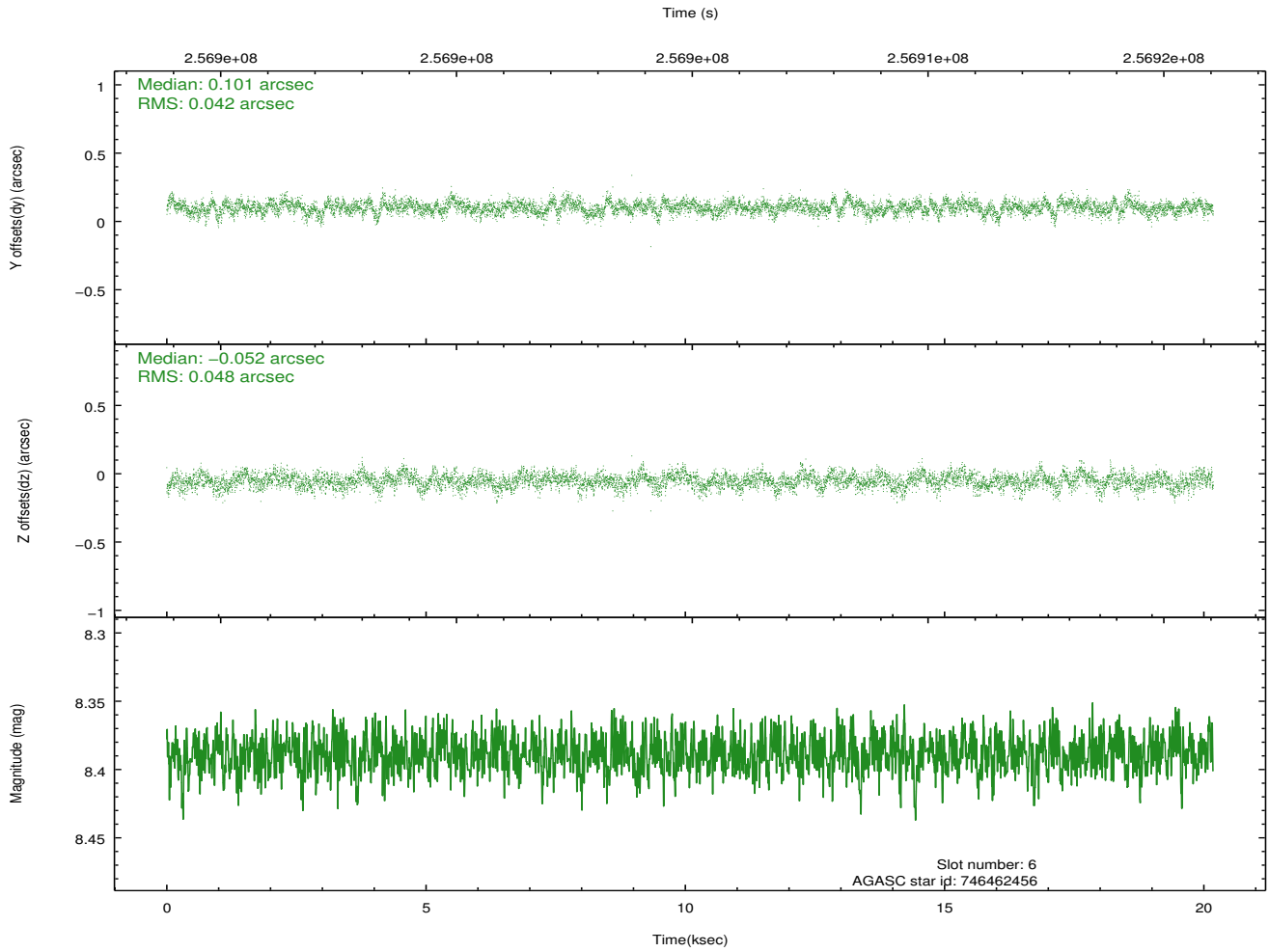
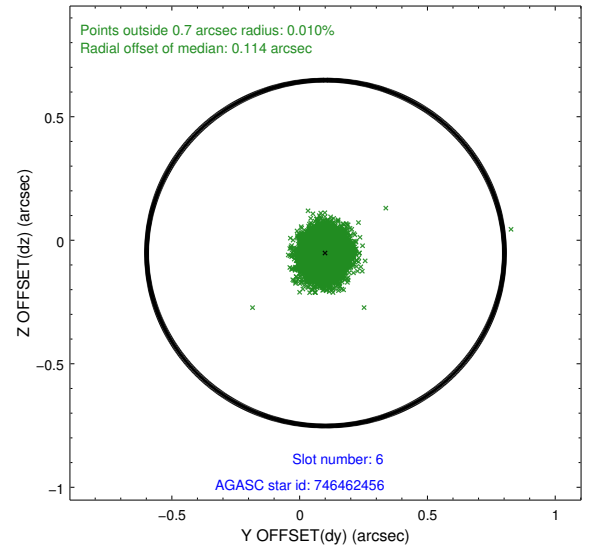
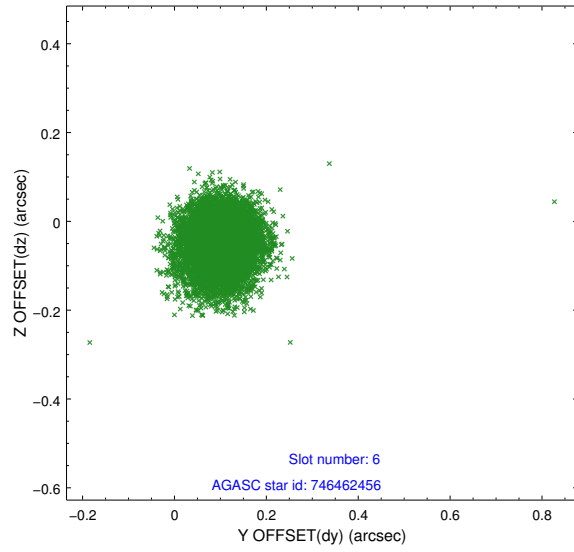
2.4.2 Slot 4



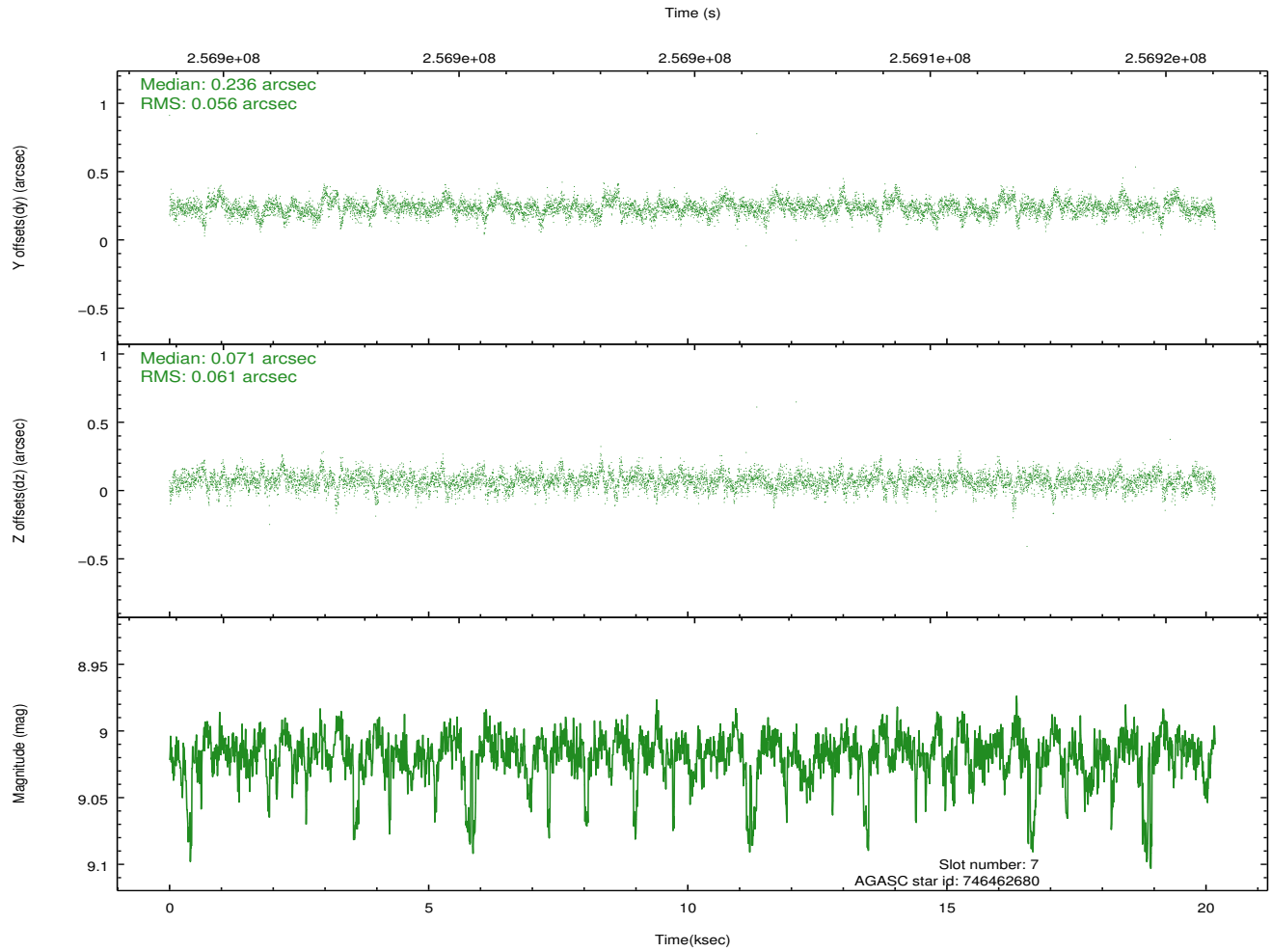
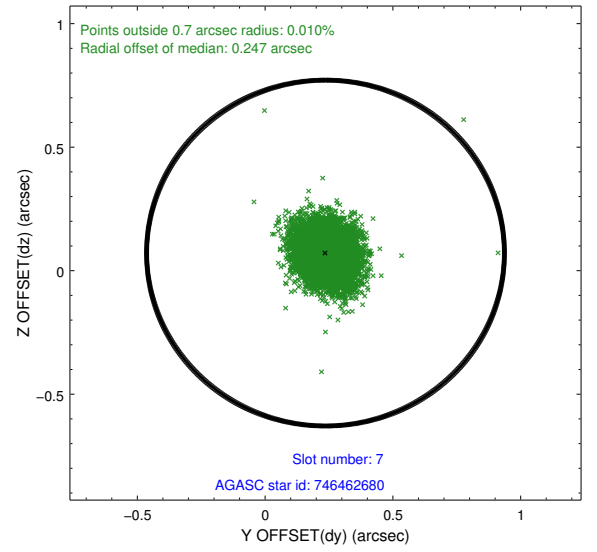
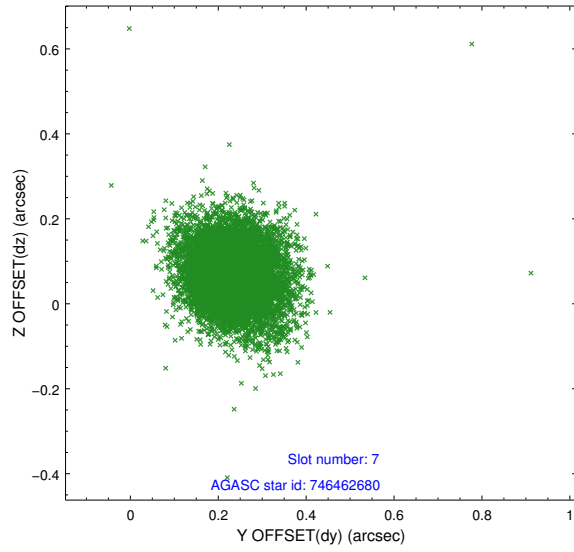
2.4.3 Slot 5



2.4.4 Slot 6

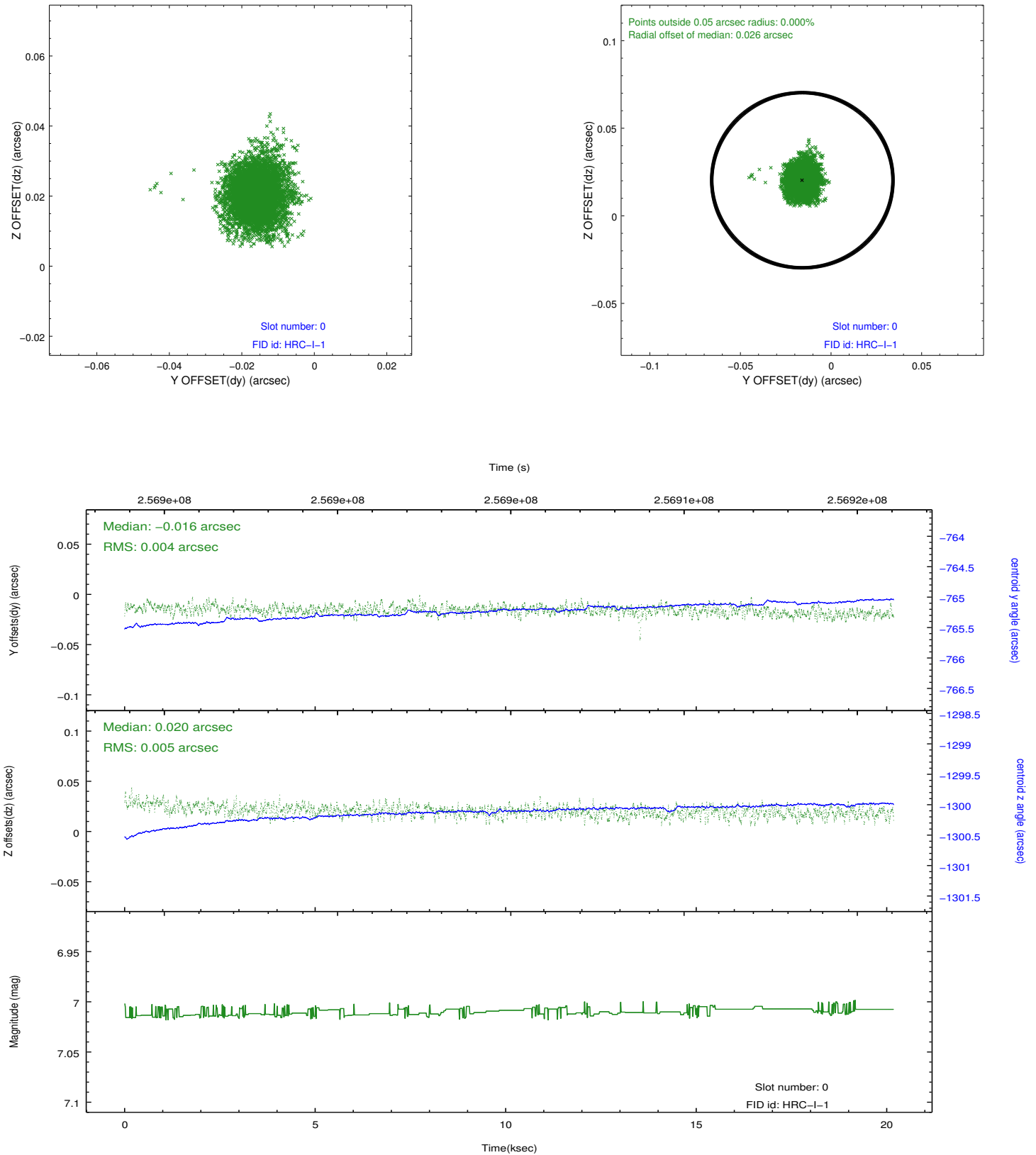


2.4.5 Slot 7

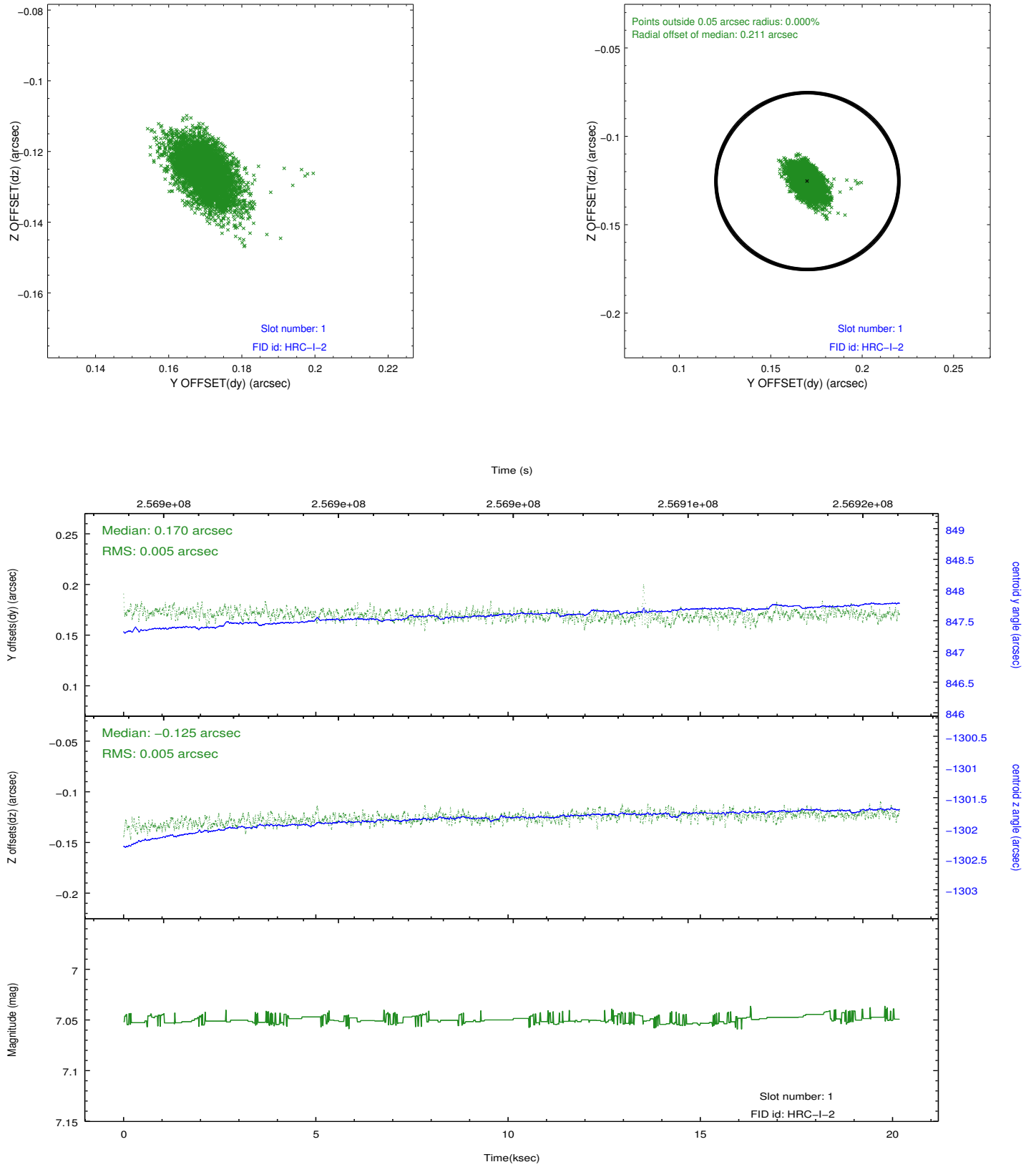


2.5 FID Slots

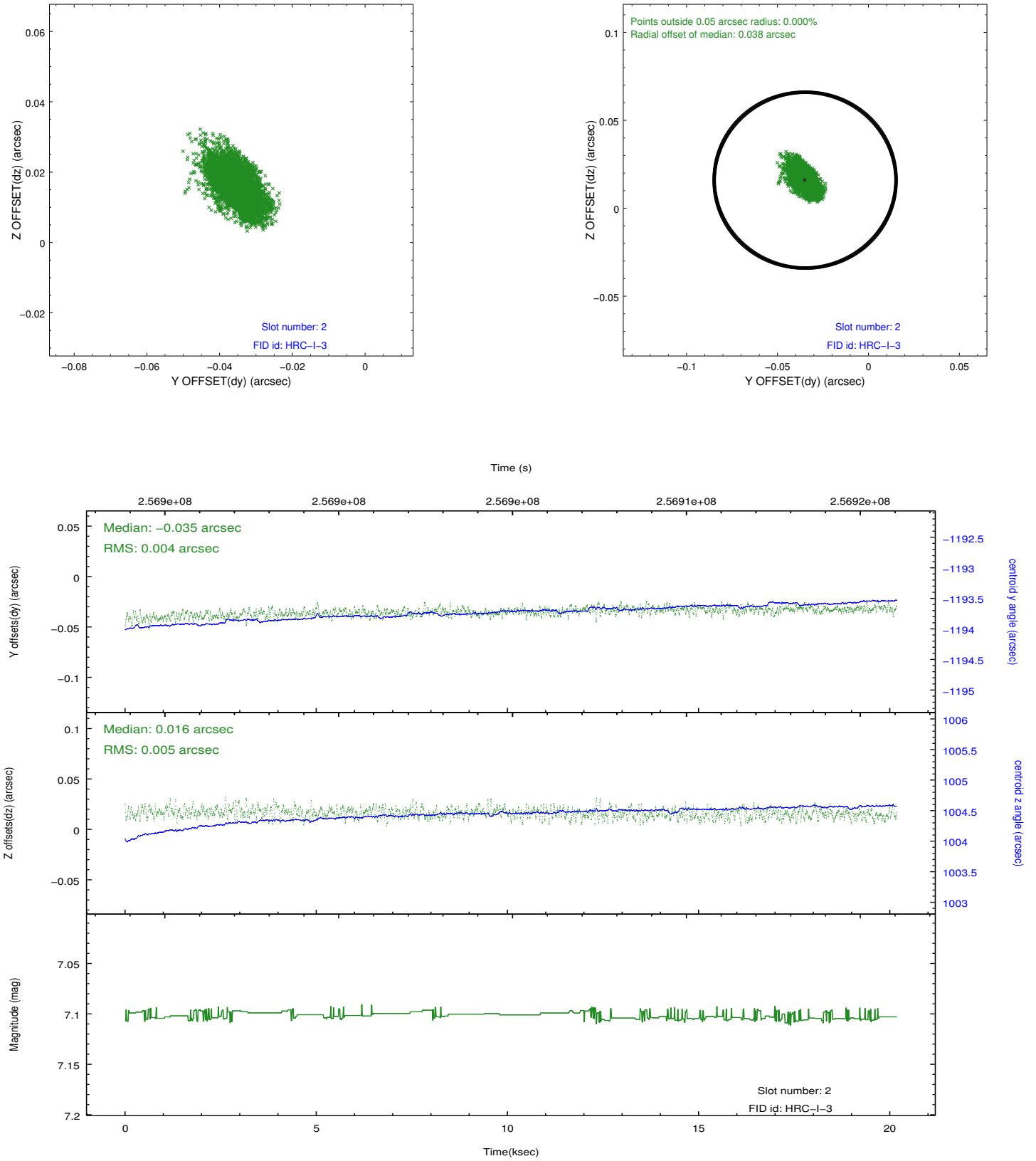
2.5.1 Slot 0



2.5.2 Slot 1



2.5.3 Slot 2



A Summary

A.1 Status

V&V Scientist	Jen Lauer
V&V Date (YYYY-MM-DD)	2012.08.12
V&V Edition	1
V&V Disposition and Status	OK
V&V Charge Time	20.1809696

A.2 Comments

Window constraint met.