

V&V Reference Report

L2 ASCDS Version : 8.4.3.1

Observation 6456 - L2 Version 3
Chandra X-Ray Center

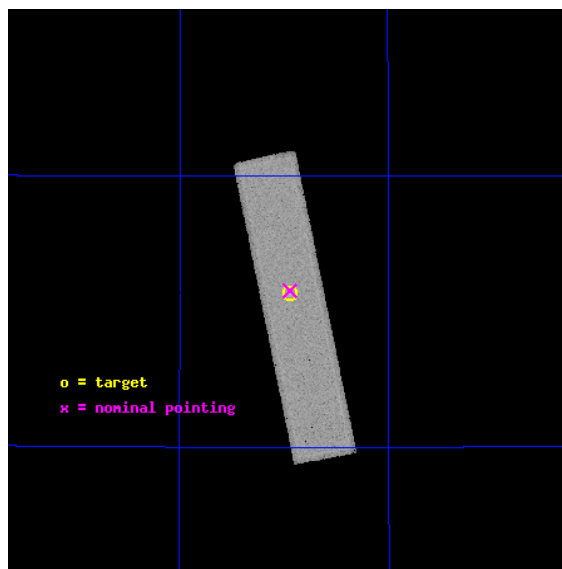
L2 Processing Date : Aug 11 2012

Contents

1	Front	2
2	OBI	3
2.1	OBI	3
2.1.1	Images	3
2.1.2	Parameters	4
2.1.3	Events	4
2.2	Compared Parameters	5
2.3	Aspect	6
2.4	Star Slots	9
2.4.1	Slot 3	9
2.4.2	Slot 4	10
2.4.3	Slot 5	11
2.4.4	Slot 6	12
2.4.5	Slot 7	13
2.5	FID Slots	14
2.5.1	Slot 0	14
2.5.2	Slot 1	15
2.5.3	Slot 2	16
A	Summary	17
A.1	Status	17
A.2	Comments	17

1 Front

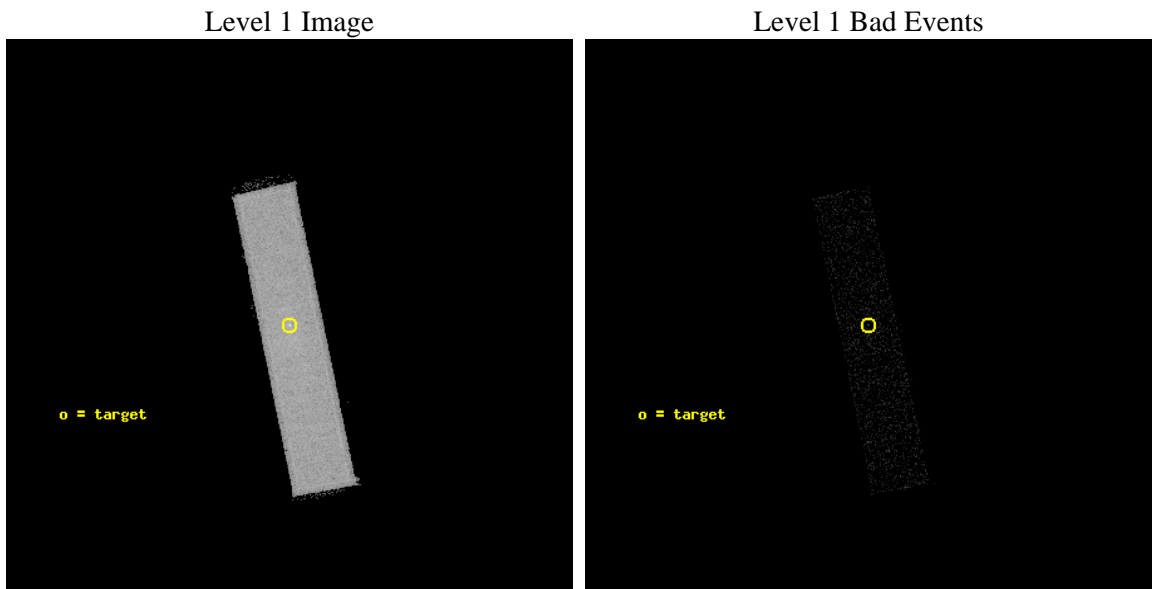
seq_num	290549	Sequence number
obs_id	6456	Observation id
title	AO7 Measurements of the optical/UV Transmission of the HRC and ACIS Filters.	Proposal title
observer	Dr. CXC Calibration	Principal investigator
object	Vega	Source name
ra_targ	279.235	Observer's specified target RA [deg]
dec_targ	38.783778	Observer's specified target Dec [deg]
ra_nom	279.23619876993	Nominal RA [deg]
dec_nom	38.788468126431	Nominal Dec [deg]
roll_nom	78.297365558074	Nominal Roll [deg]
revision	3	Processing version of data
ontime	2053.3313454986	[s]
livetime	2038.6953339989	Ontime multiplied by DTCOR
l2events	98548	Number of level 2 events



2 OBI

2.1 OBI

2.1.1 Images



2.1.2 Parameters

obi_num	0	Obi number	sched_exp_time	1900.000000	[s] Scheduled observation exposure time
ascdsver	8.4.5	Processing system revision	ontime	2053.3313454986	[s]
caldbver	4.5.1.1	 	l1events	131784	Number of level 1 events
date	2012-08-11T03:34:46	Date and time of file creation			
revision	3	Processing version of data			

2.1.3 Events

Level 1 Events

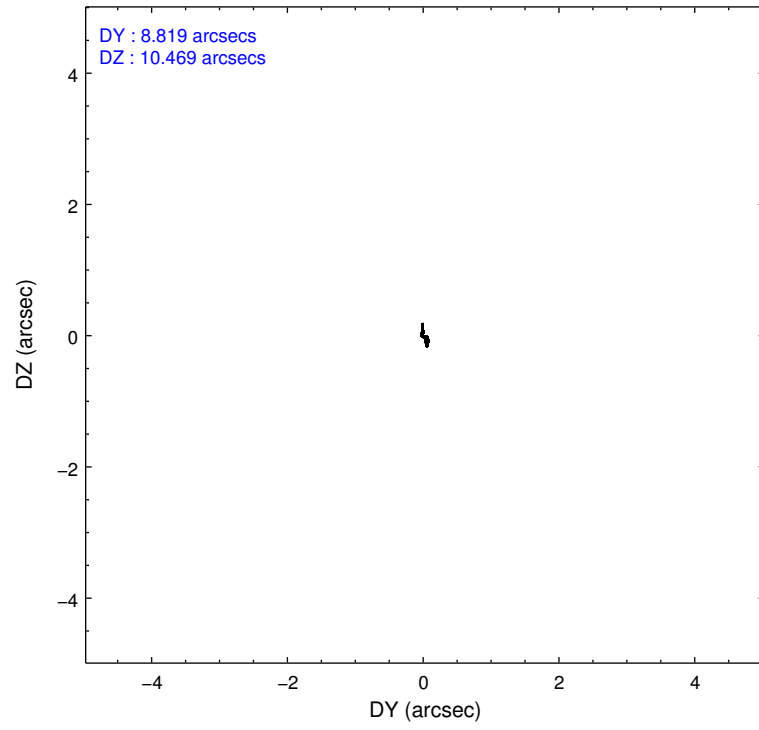
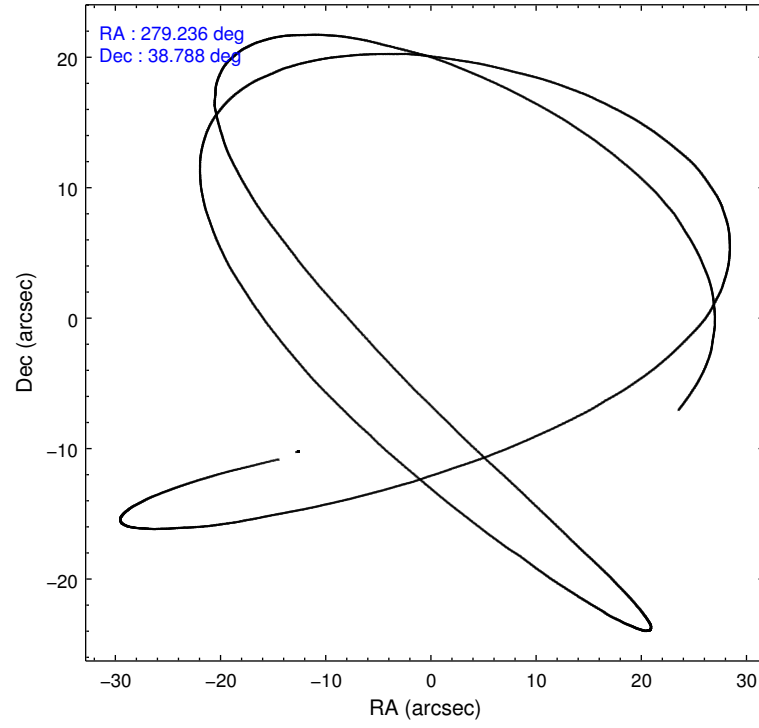
	segment 1	segment 2	segment 3
level 1 events	0	131784	0
rejected events	0	9959	0
rejected %	0%	7%	0%

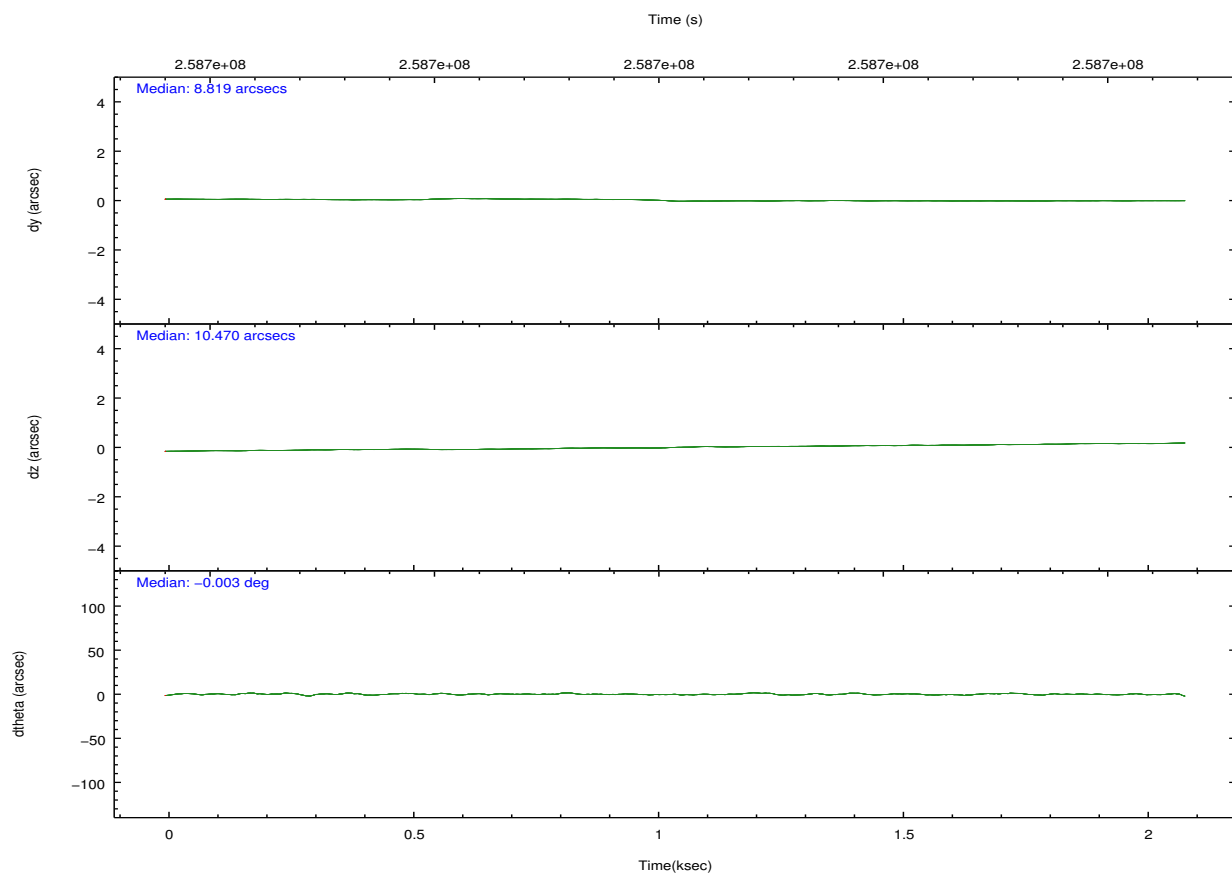
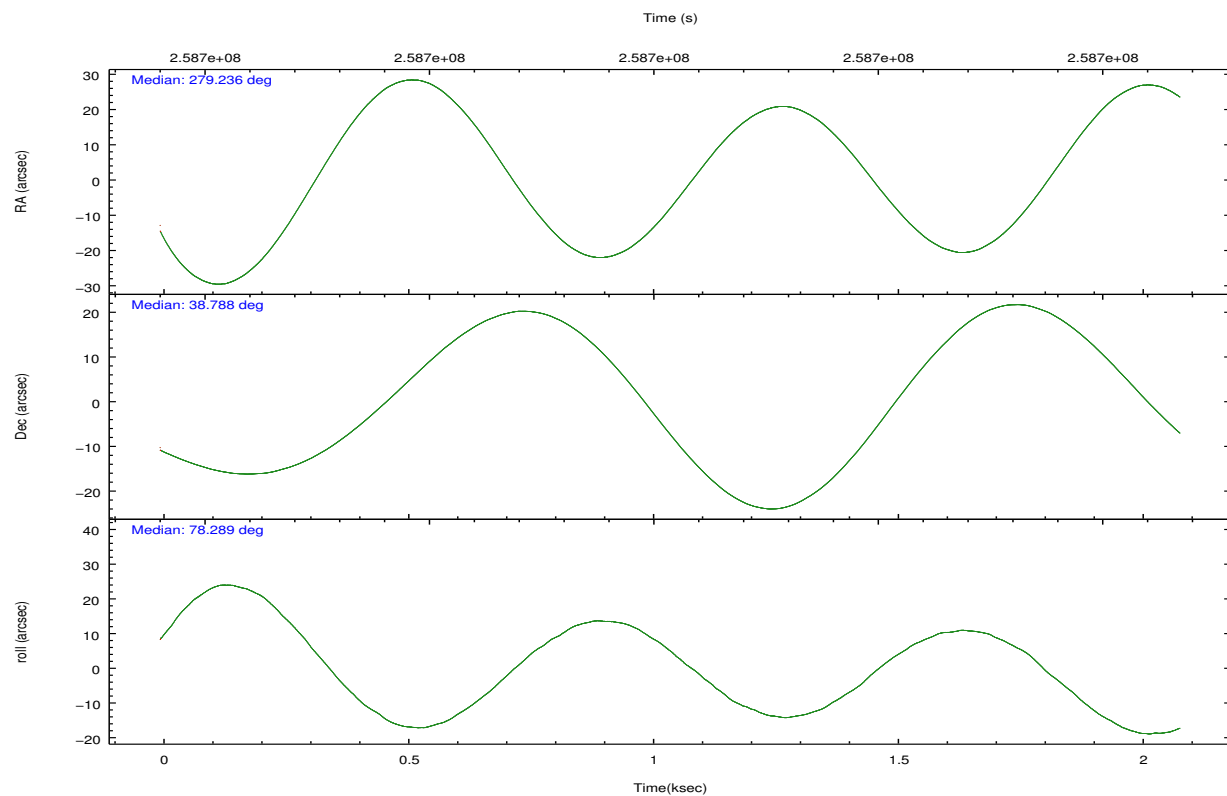
2.2 Compared Parameters

Parameter	Planned	Actual
Instrument	HRC	HRC
Detector	HRC-S	HRC-S
Grating	NONE	NONE
Data mode	OBSERVING	OBSERVING
Observation mode	POINTING	POINTING
[deg] Pointing RA	279.249604	279.2361987699285
[deg] Pointing Dec	38.761660	38.78846812643084
[deg] Pointing Roll	78.221641	78.29736555807428
[s] Window start time (MET)	255139265.184000	255139265.184000
[s] Window stop time (MET)	260150465.184000	260150465.184000
[mm] SIM focus pos	-1.533336	-1.526339935833849
[mm] SIM defocus	7.710433287538843e-07	0.006996703570447904
[mm] SIM translation stage pos	250.455976	250.466033080201
[mm] SIM translation stage offset	0	-0.01005468664627074
[s] Observation start time (MET)	258702671.184000	258702296.64314
Observation start date	2006-03-14T05:50:06	2006-03-14T05:44:56
[s] Observation end time (MET)	258704571.184000	258704704.88075
Observation end date	2006-03-14T06:21:46	2006-03-14T06:25:04

Parameter	Planned	Actual
Obspar format version number	7	7
Obspar file type	PREDICTED	ACTUAL
Obspar update status	NONE	UPDATED

2.3 Aspect



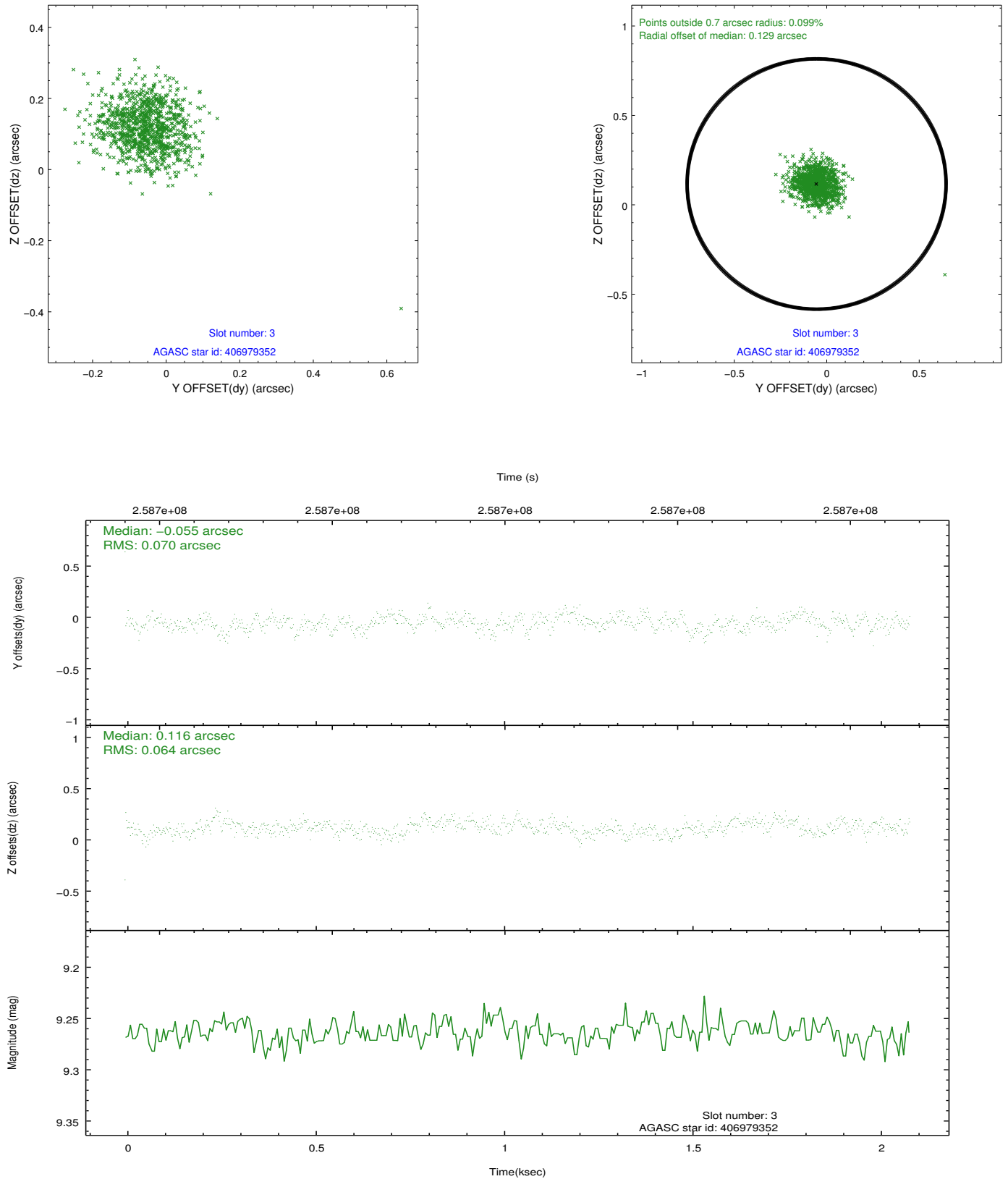


Slot Statistics

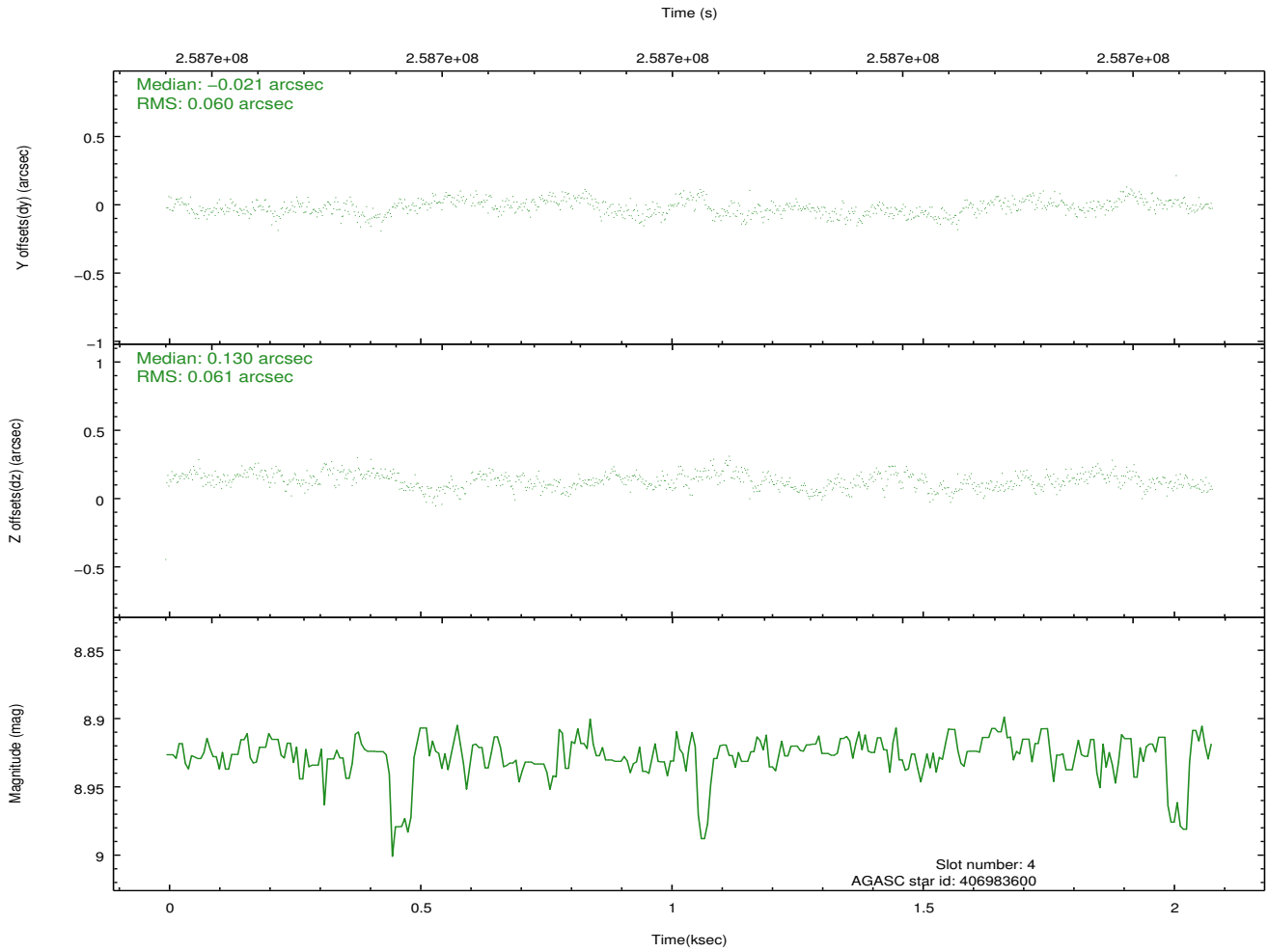
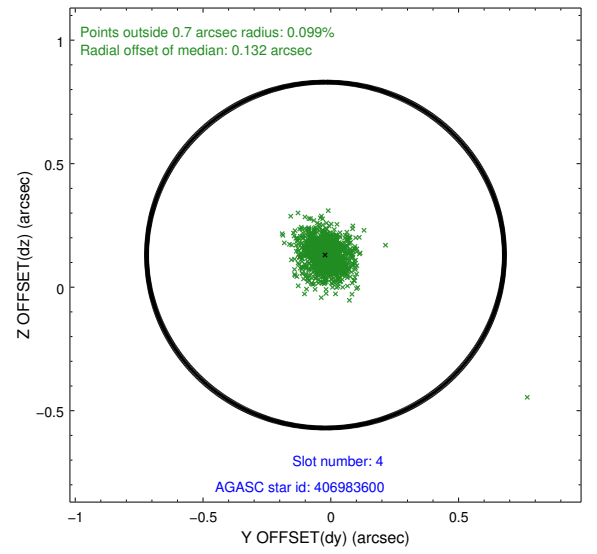
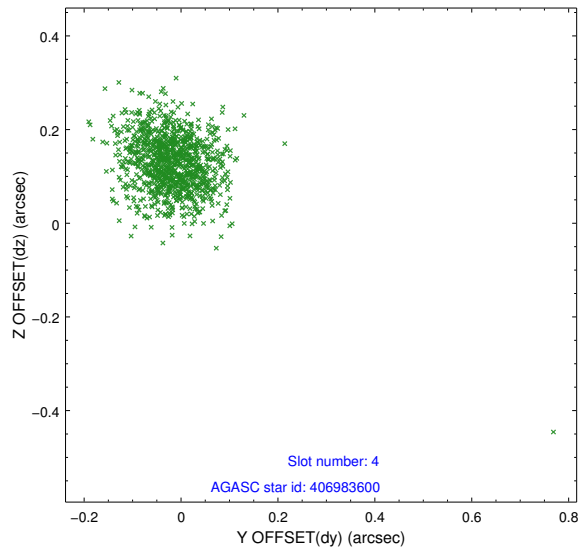
slot	status	id	mag	n_pts	med_dy	med_dz	dr1	dr2	ra	dec	mean_y	mean_z
0	FID	HRC-S-1	7.03	509	0.142	-0.200	0.007	0.011	0.000000	0.000000	-1163.02	-459.20
1	FID	HRC-S-2	7.02	509	0.154	-0.116	0.005	0.009	0.000000	0.000000	1234.37	-452.69
2	FID	HRC-S-3	7.04	509	0.093	0.015	0.007	0.012	0.000000	0.000000	-1163.35	569.65
3	GUIDE	406979352	9.26	1015	-0.055	0.116	0.097	0.157	279.968297	39.230258	2067.37	-1616.20
4	GUIDE	406983600	8.93	1014	-0.021	0.130	0.085	0.137	279.940957	39.020708	1316.56	-1703.33
5	GUIDE	406987272	6.93	1017	0.130	-0.227	0.061	0.100	278.536588	38.437504	-1543.95	1729.49
6	GUIDE	406990192	9.00	1017	0.038	-0.112	0.092	0.146	278.510952	38.533654	-1221.93	1871.59
7	GUIDE	406992968	7.64	1016	-0.099	0.099	0.071	0.113	279.925490	37.993090	-2311.23	-2439.17

2.4 Star Slots

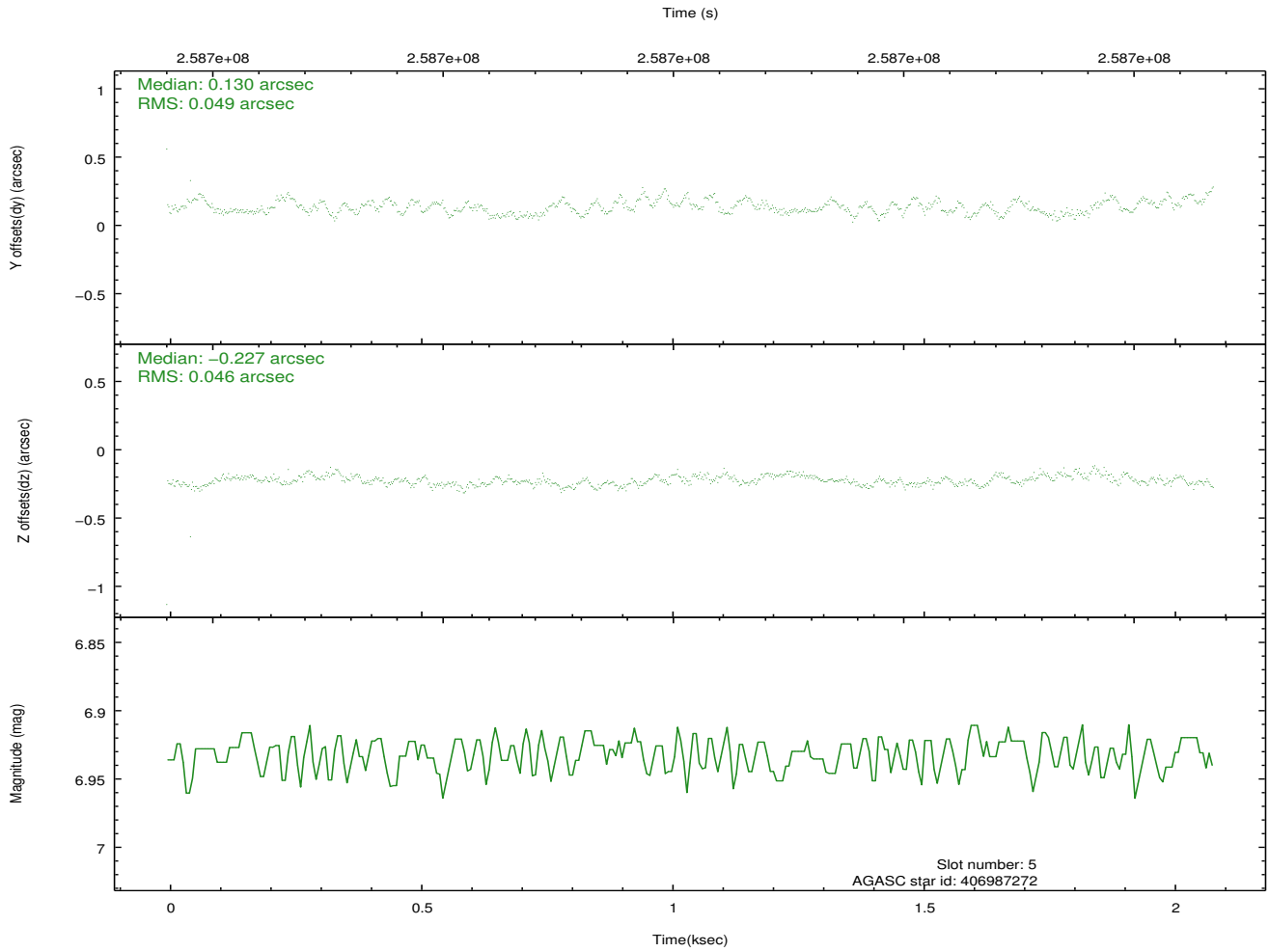
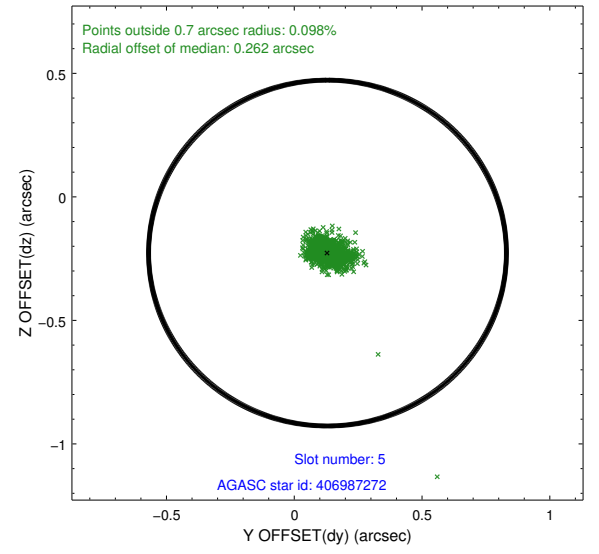
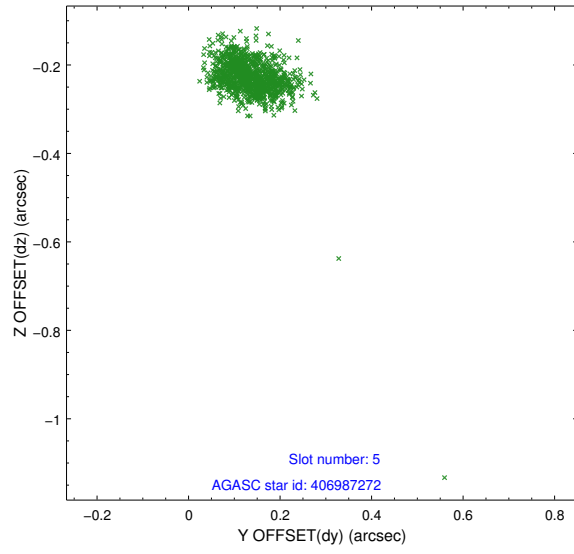
2.4.1 Slot 3



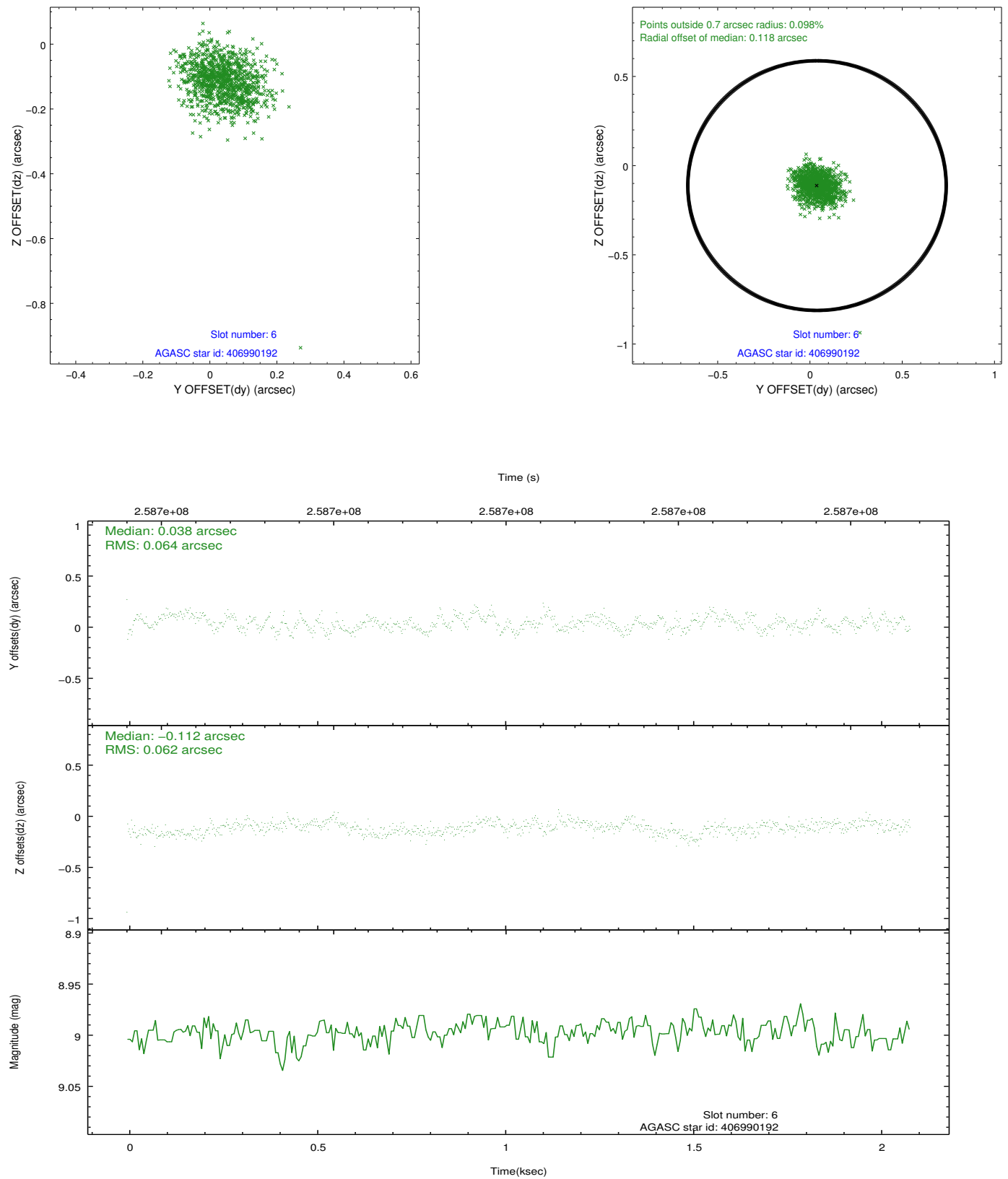
2.4.2 Slot 4



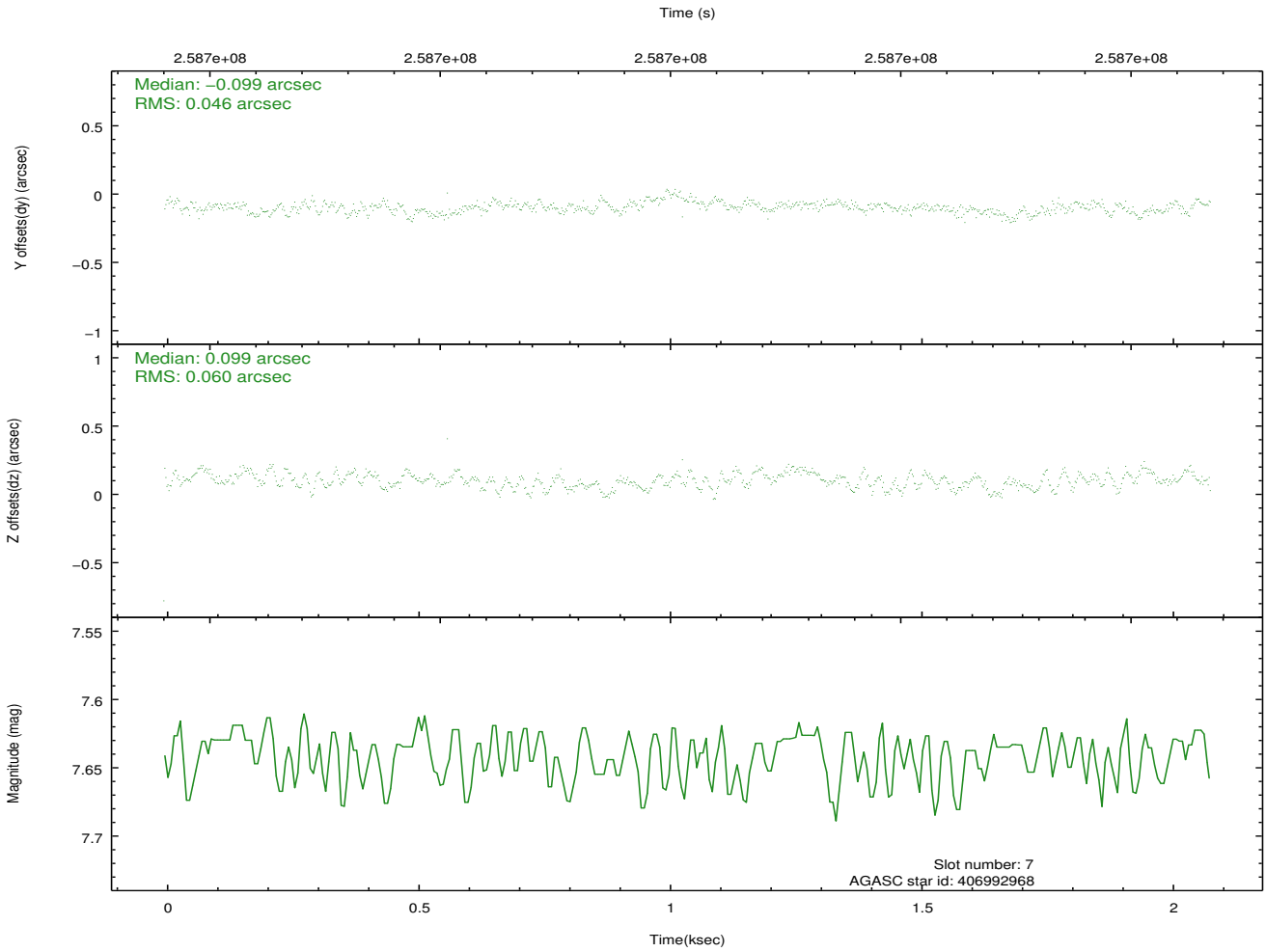
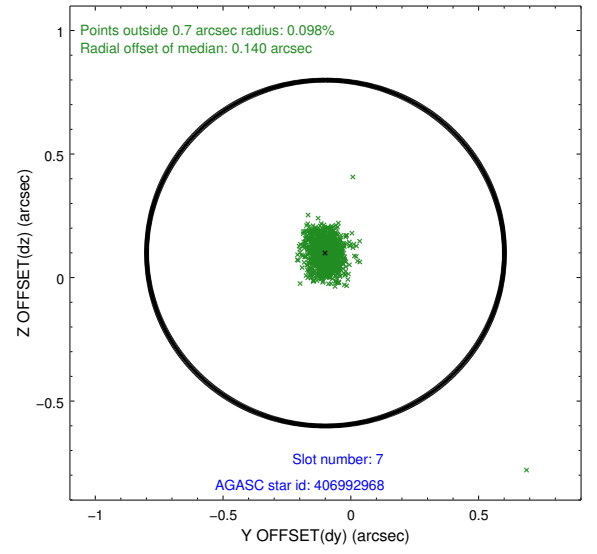
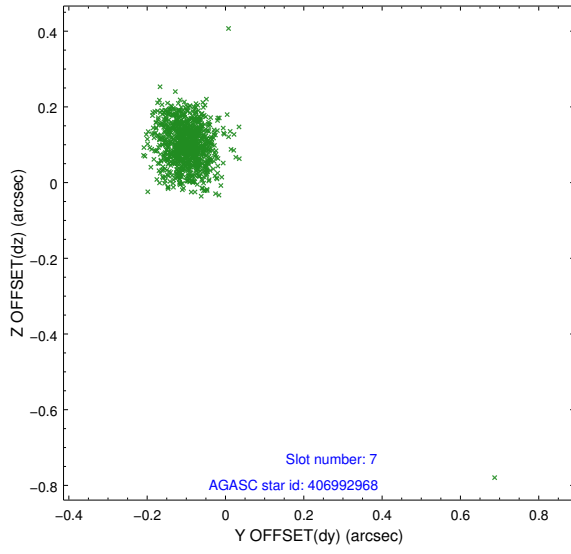
2.4.3 Slot 5



2.4.4 Slot 6

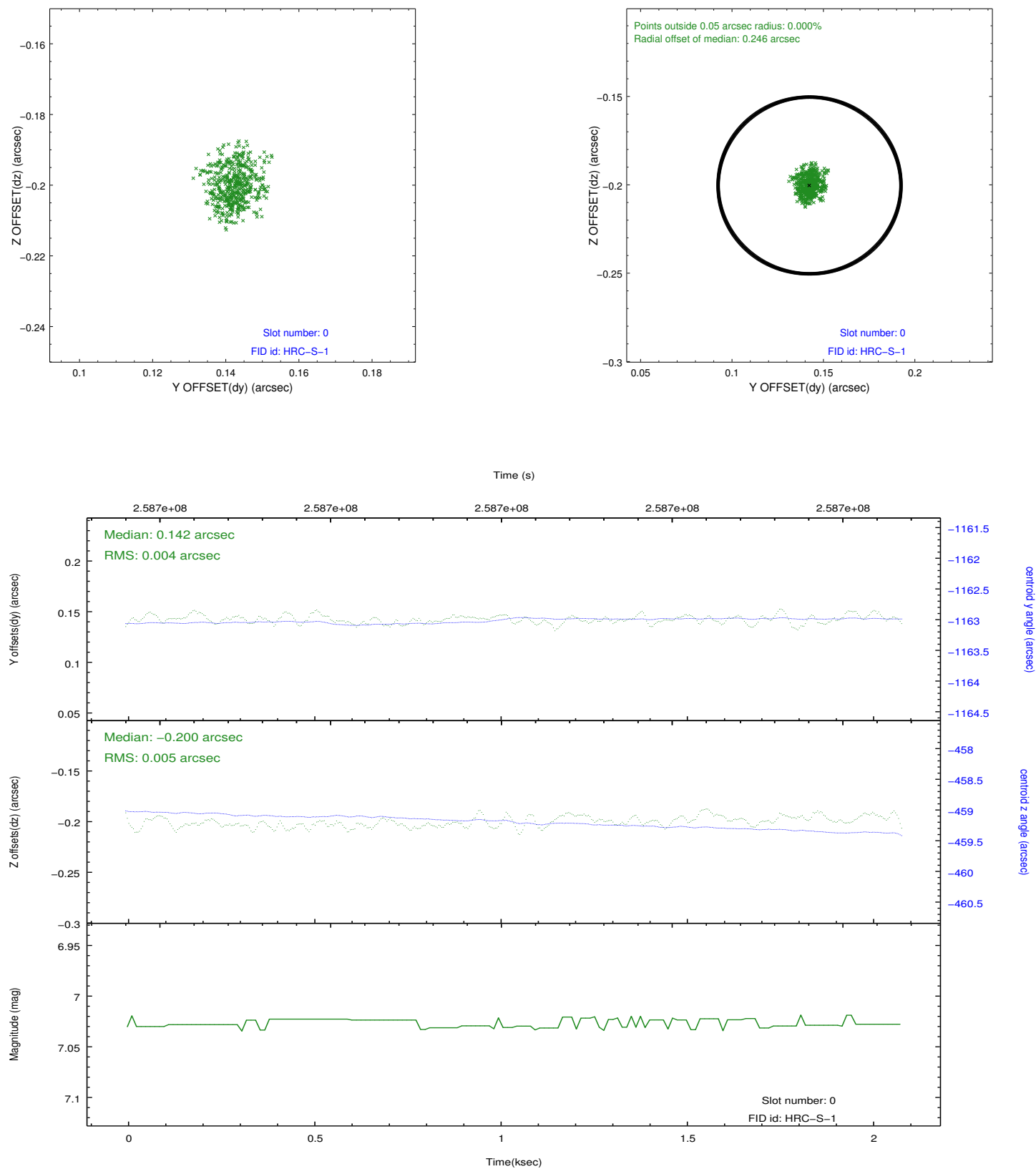


2.4.5 Slot 7

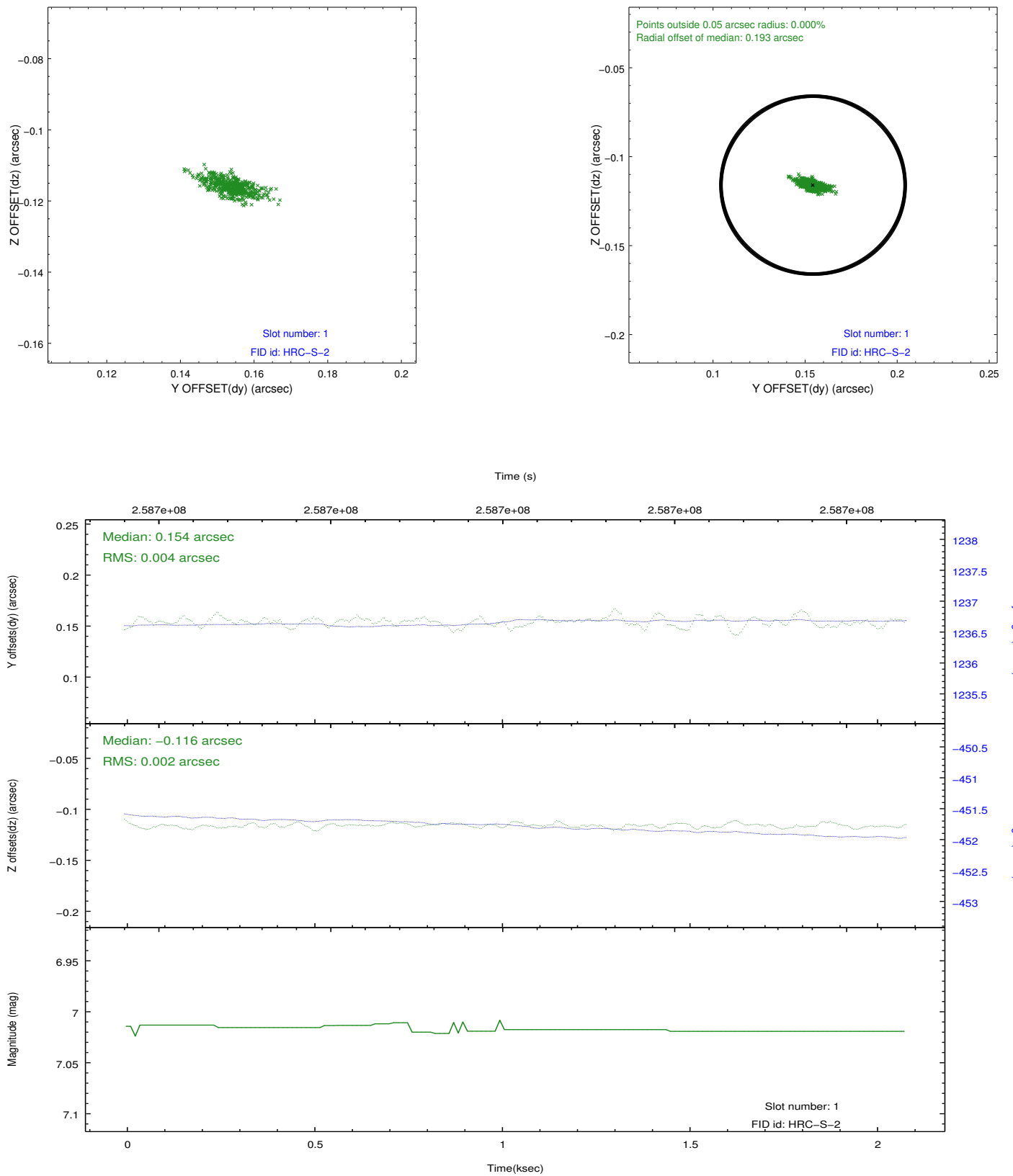


2.5 FID Slots

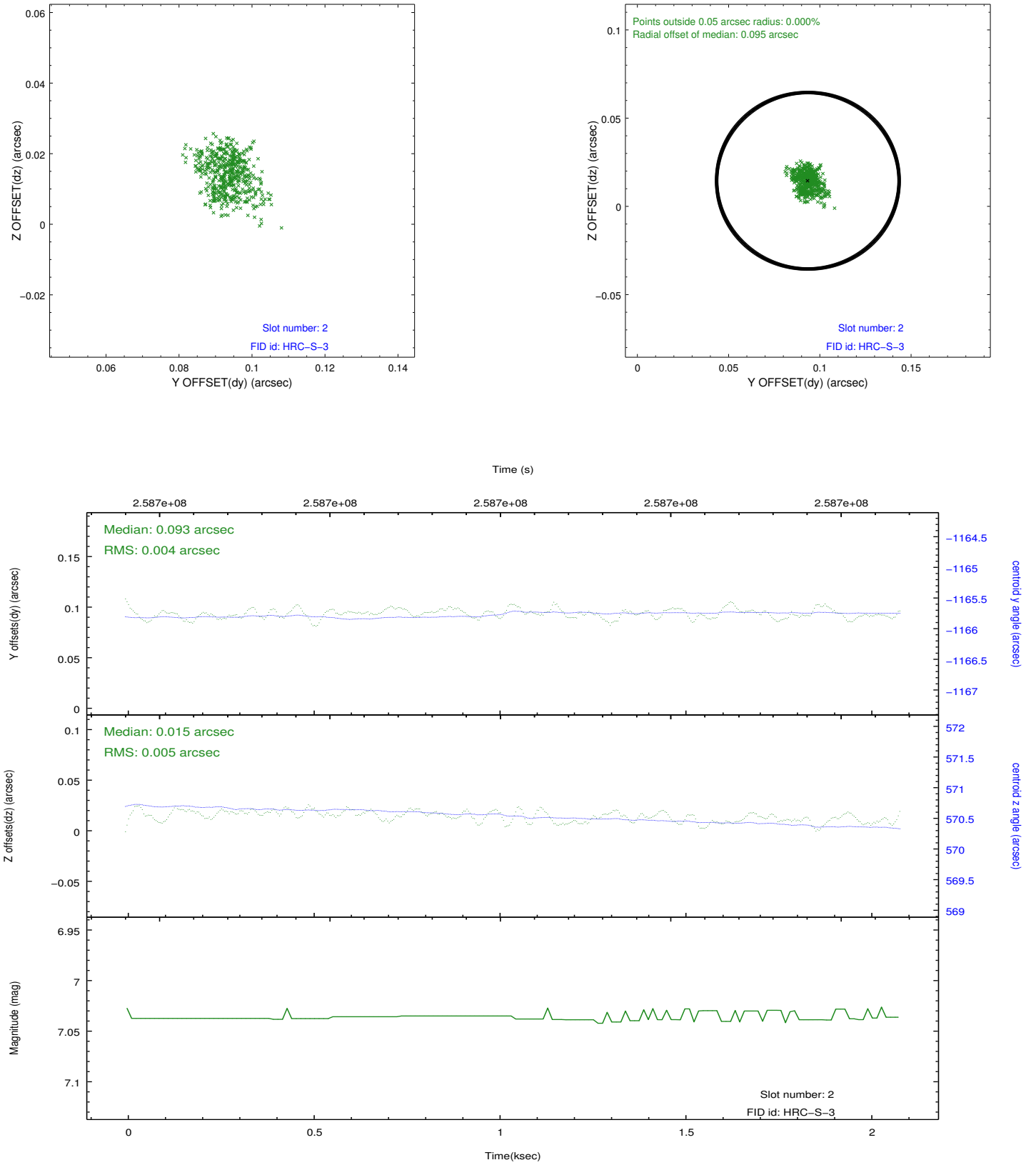
2.5.1 Slot 0



2.5.2 Slot 1



2.5.3 Slot 2



A Summary

A.1 Status

V&V Scientist	Jen Lauer
V&V Date (YYYY-MM-DD)	2012.08.12
V&V Edition	1
V&V Disposition and Status	OK
V&V Charge Time	2.05333134

A.2 Comments

Window constraint met.