

V&V Reference Report

L2 ASCDS Version : 7.6.7

Observation 6073 - L2 Version 002
Chandra X-Ray Center

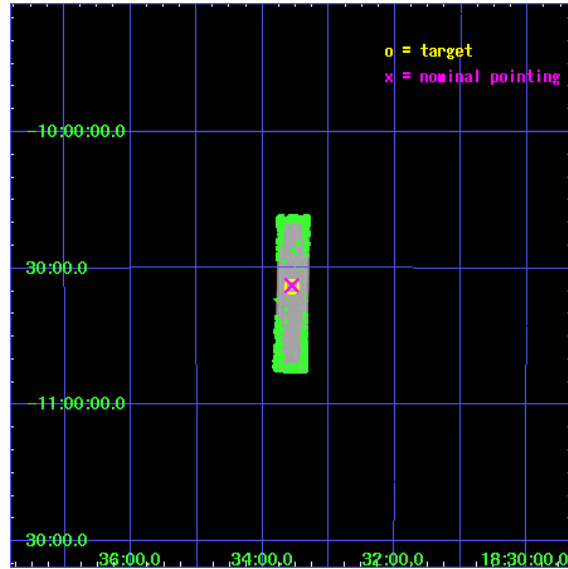
L2 Processing Date: Feb 27 2006

Contents

1	Front	2
2	OBI	3
2.1	OBI	3
2.1.1	Images	3
2.1.2	Parameters	4
2.1.3	Events	4
2.2	Compared Parameters	5
2.3	Aspect	6
2.4	Star Slots	9
2.4.1	Slot 3	9
2.4.2	Slot 4	10
2.4.3	Slot 5	11
2.4.4	Slot 6	12
2.4.5	Slot 7	13
2.5	FID Slots	14
2.5.1	Slot 0	14
2.5.2	Slot 1	15
2.5.3	Slot 2	16
3	Point Sources	17
A	Summary	18
A.1	Status	18
A.2	Comments	18

1 Front

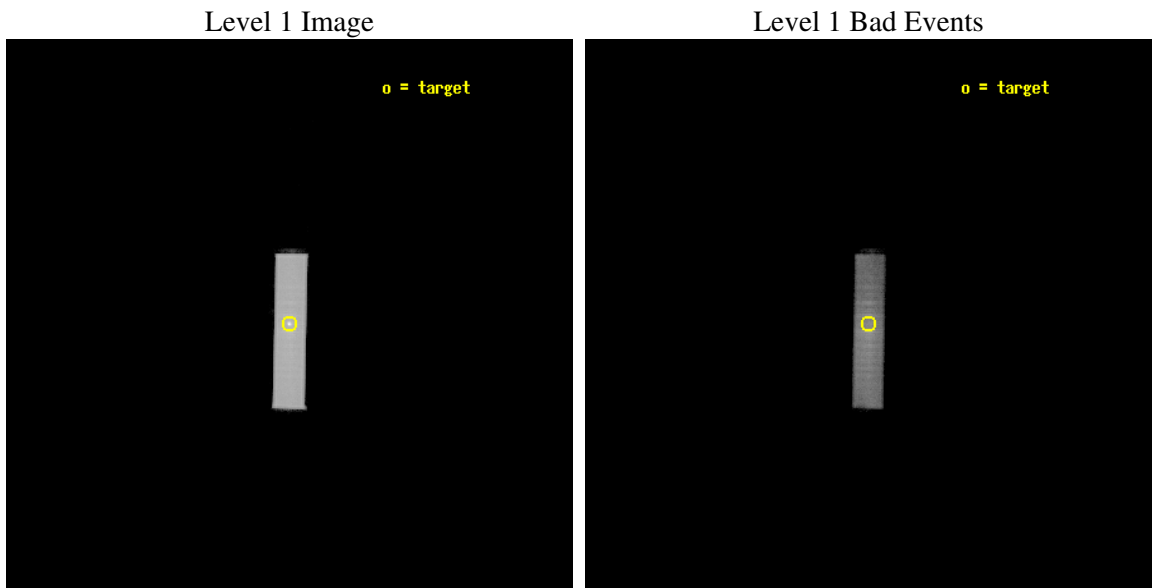
seq_num	590400
obs_id	6073
title	AO6A Observations of the Standard Candles Cas A and G21.5-09
observer	Dr. CXC Calibration
object	G21.5-09
ra_targ	278.389583
dec_targ	-10.568528
ra_nom	278.38966167402
dec_nom	-10.563773834788
roll_nom	91.041086838377
revision	2
ontime	20146.632164001
livetime	20041.498933483
l2events	776095



2 OBI

2.1 OBI

2.1.1 Images



2.1.2 Parameters

obi_num	0
ascdsver	7.6.7
caldbver	3.2.1
date	2006-02-27T13:19:42
revision	2

sched_exp_time	20000.000000
ontime	20147.400914043
l1events	1090260

2.1.3 Events

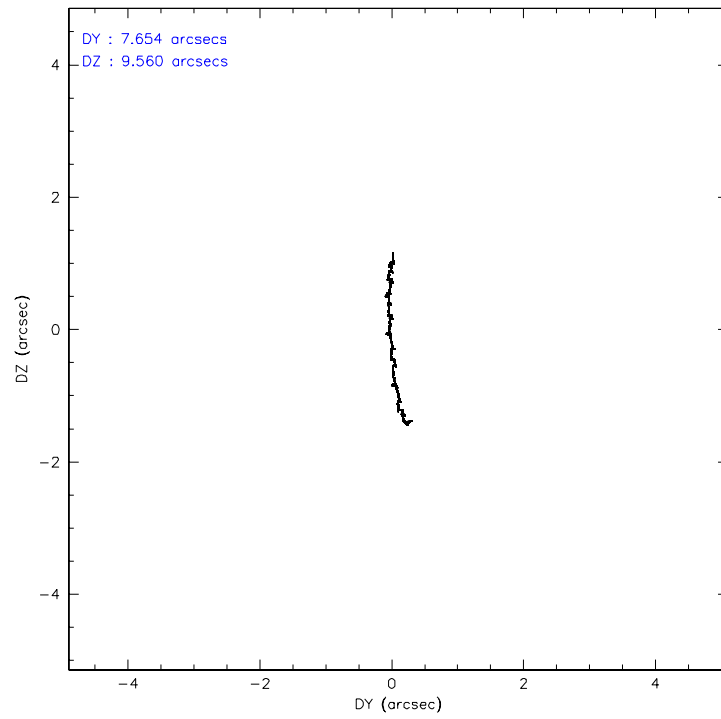
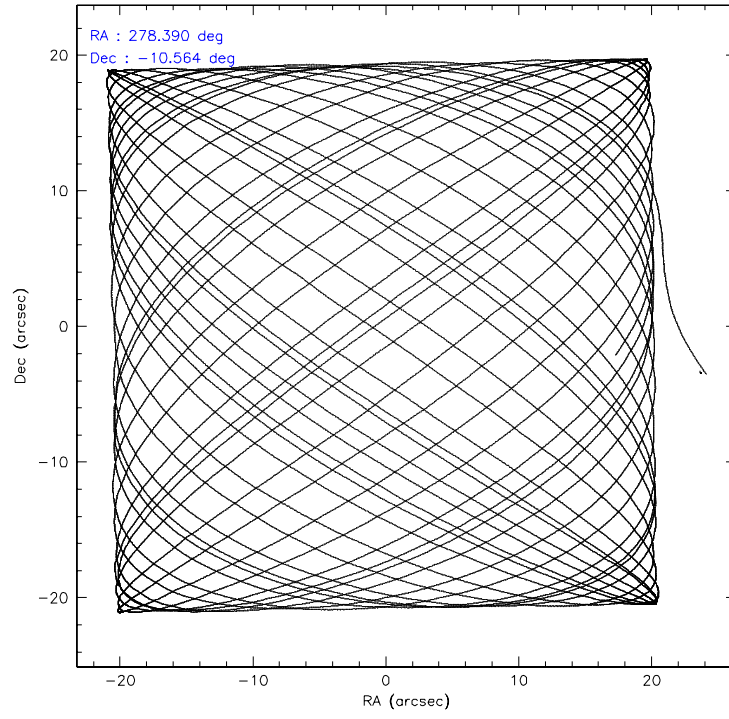
Level 1 Events

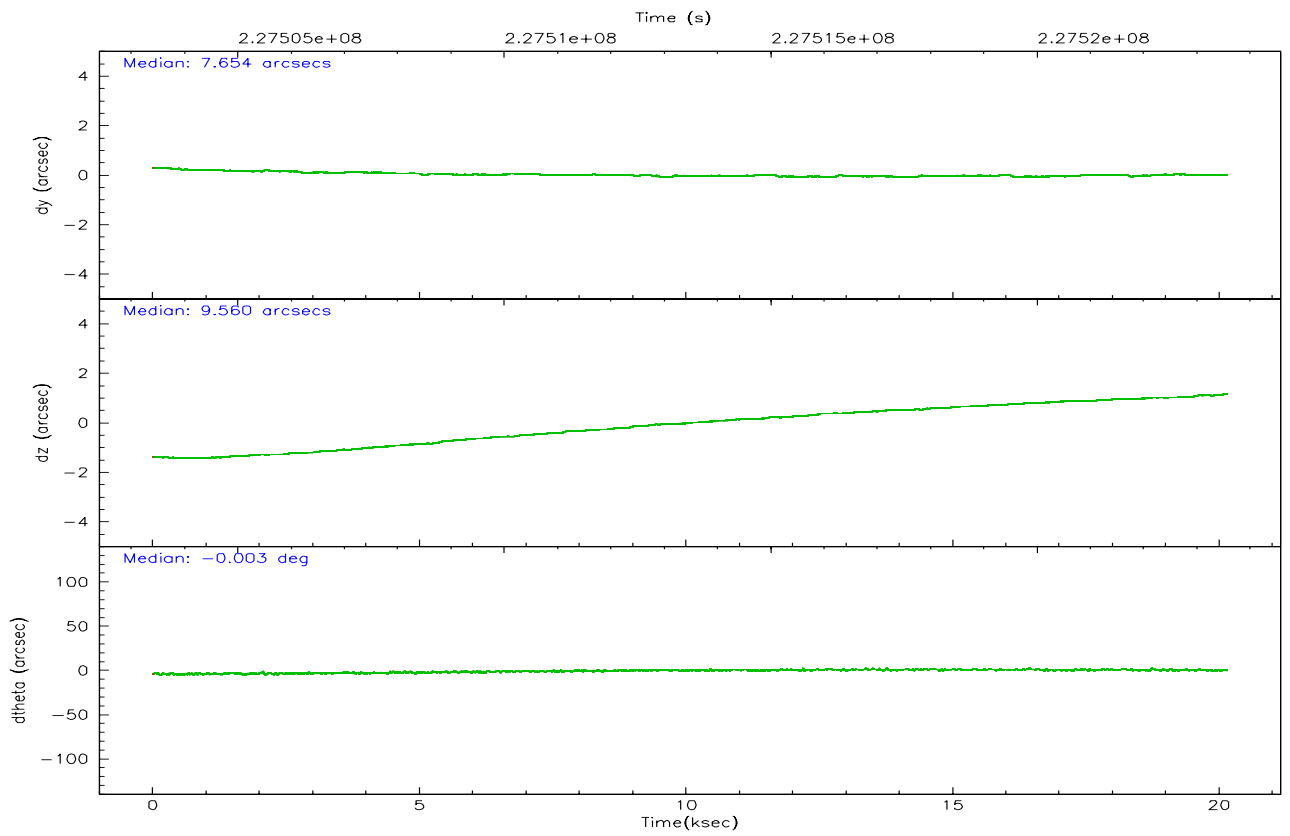
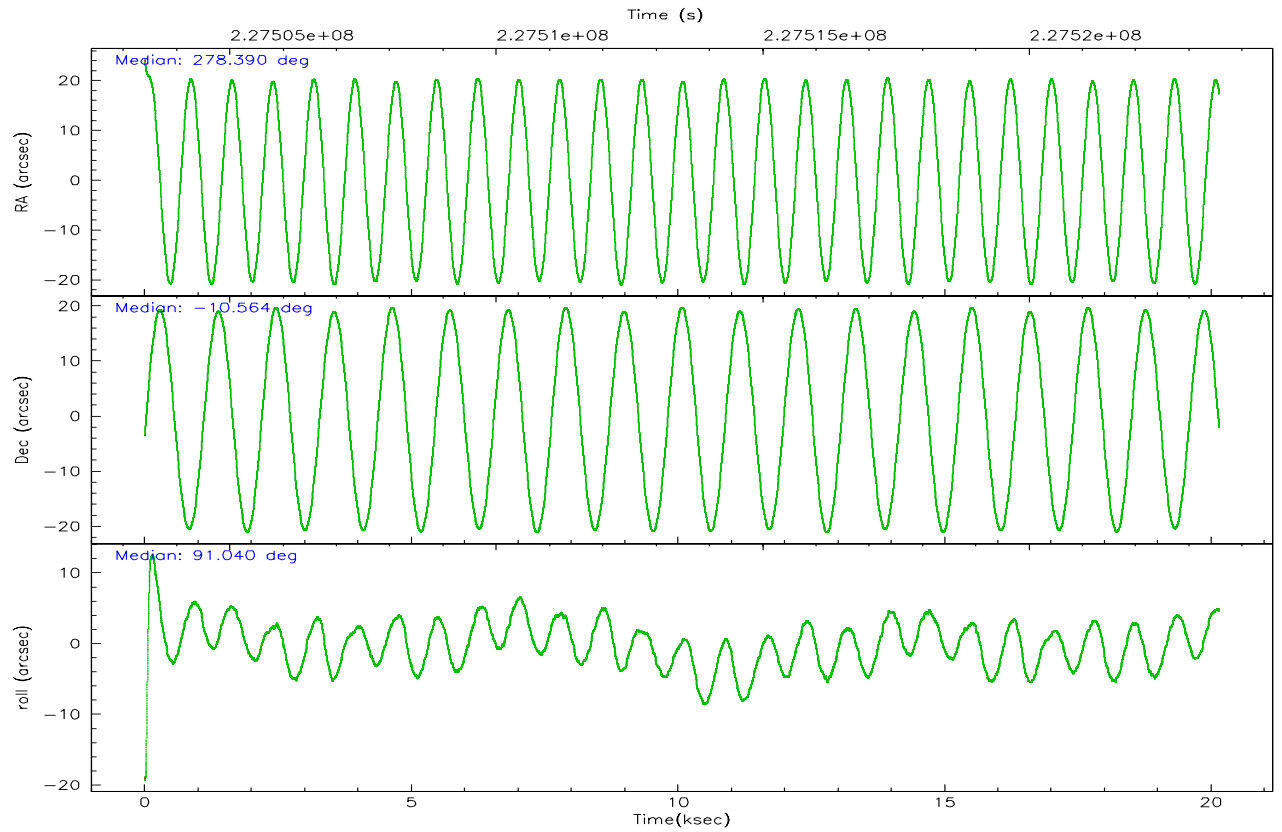
	segment 1	segment 2	segment 3
level 1 events	0	1090255	5
rejected events	0	252475	5
rejected %	0%	23%	100%

2.2 Compared Parameters

Parameter	Planned	Actual	Parameter	Planned	Actual
Instrument	HRC	HRC	Obspar format version number	6	6
Detector	HRC-S	HRC-S	Obspar file type	PREDICTED	ACTUAL
Grating	NONE	NONE	Obspar update status	NONE	UPDATED
Data mode	OBSERVING	OBSERVING			
Observation mode	POINTING	POINTING			
Pointing RA	278.405854	278.3896616740226			
Pointing Dec	-10.587589	-10.56377383478803			
Pointing Roll	90.976743	91.04108683837667			
Window start time	225331264.184000	225331264.184000			
Window stop time	228614464.184000	228614464.184000			
SIM focus pos (mm)	-1.429586	-1.428180813131781			
SIM defocus (mm)	0.1037507710433287	0.1051558262725154			
SIM translation stage pos (mm)	250.455976	250.466033080201			
SIM translation stage offset (mm)	0	-0.01005468664627074			
Observation start time	227503562.184000	227502479.59689			
Observation start date	2005-03-18T03:24:58	2005-03-18T03:07:59			
Observation end time	227523562.184000	227524876.87291			
Observation end date	2005-03-18T08:58:18	2005-03-18T09:21:16			

2.3 Aspect



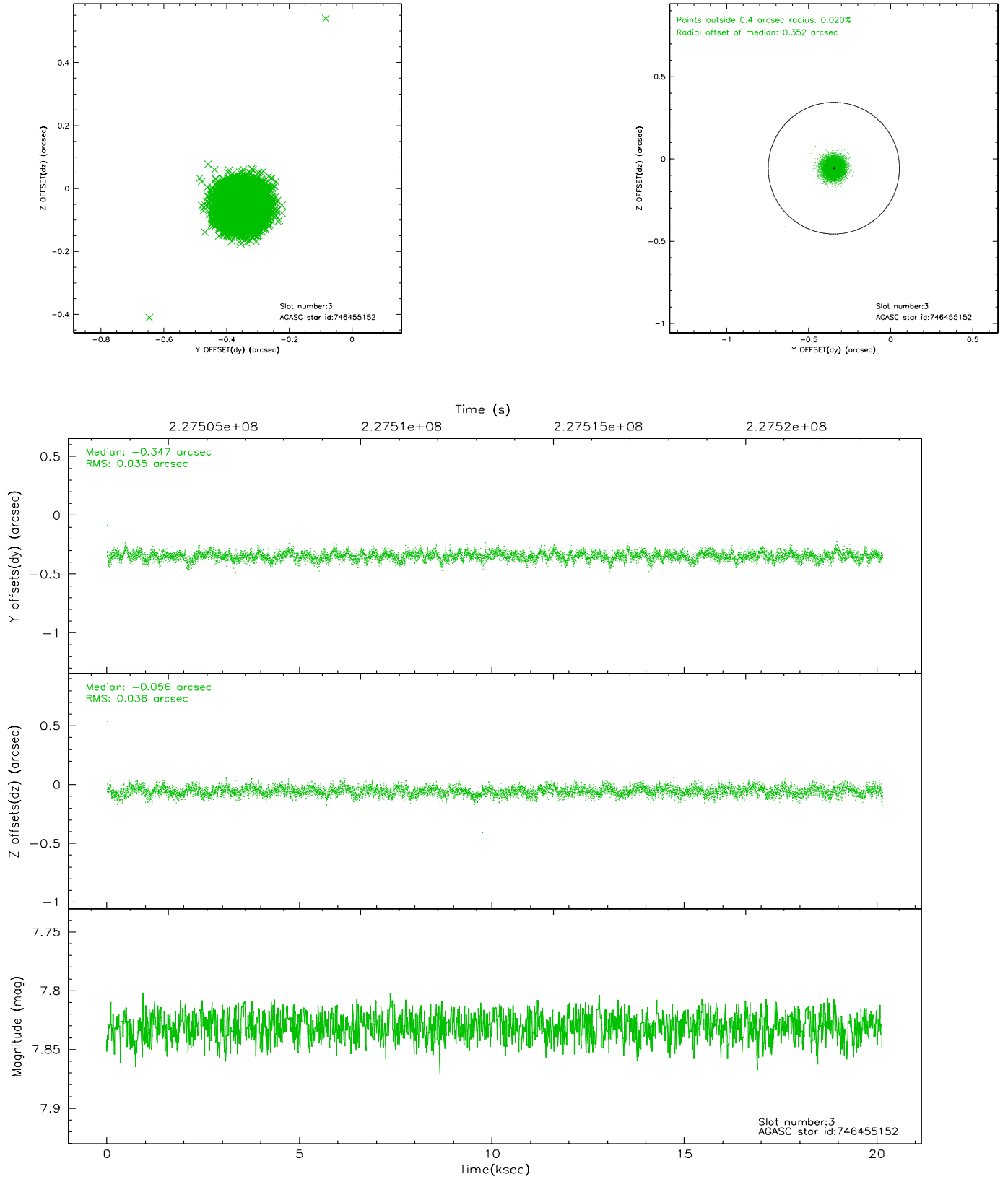


Slot Statistics

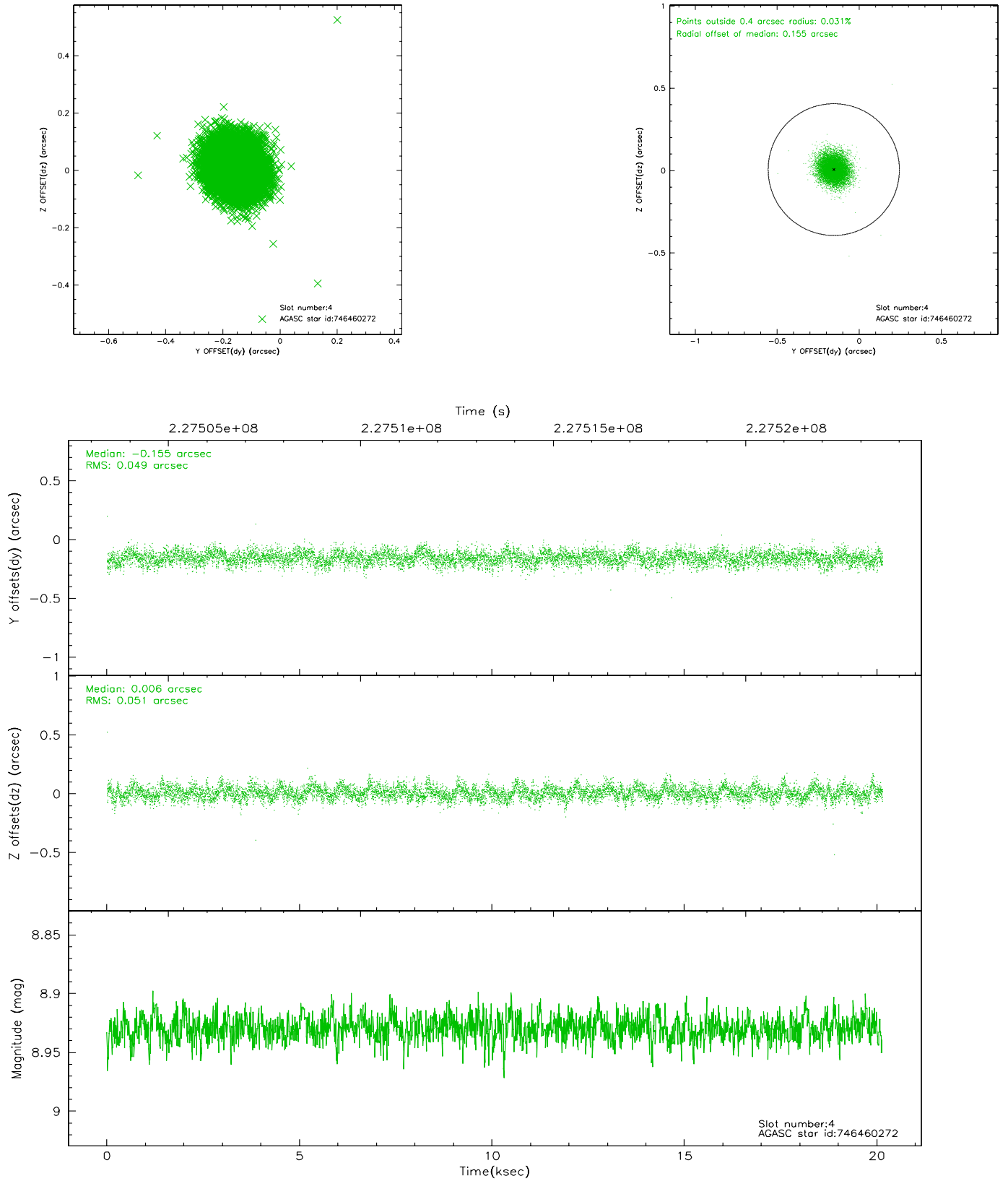
slot	status	id	mag	n_pts	med_dy	med_dz	dr1	dr2	ra	dec	mean_y	mean_z
0	FID	HRC-S-1	6.99	4914	0.132	-0.173	0.021	0.055	0.000000	0.000000	-1161.85	-458.13
1	FID	HRC-S-2	6.98	4914	0.167	-0.117	0.007	0.012	0.000000	0.000000	1237.63	-450.83
2	FID	HRC-S-3	7.00	4915	0.090	-0.011	0.022	0.061	0.000000	0.000000	-1164.35	571.45
3	GUIDE	746455152	7.83	9827	-0.347	-0.056	0.053	0.085	278.447893	-9.976732	2196.03	-186.19
4	GUIDE	746460272	8.93	9824	-0.155	0.006	0.075	0.123	278.847488	-10.152127	1539.94	-1591.13
5	GUIDE	746462392	8.54	9823	0.139	0.122	0.087	0.141	279.038421	-10.890715	-1132.08	-2217.61
6	GUIDE	746462456	8.39	9827	0.127	-0.127	0.069	0.116	278.652171	-10.530173	190.94	-875.32
7	GUIDE	746462680	9.01	9822	0.238	0.055	0.081	0.133	278.660755	-10.782756	-717.80	-889.01

2.4 Star Slots

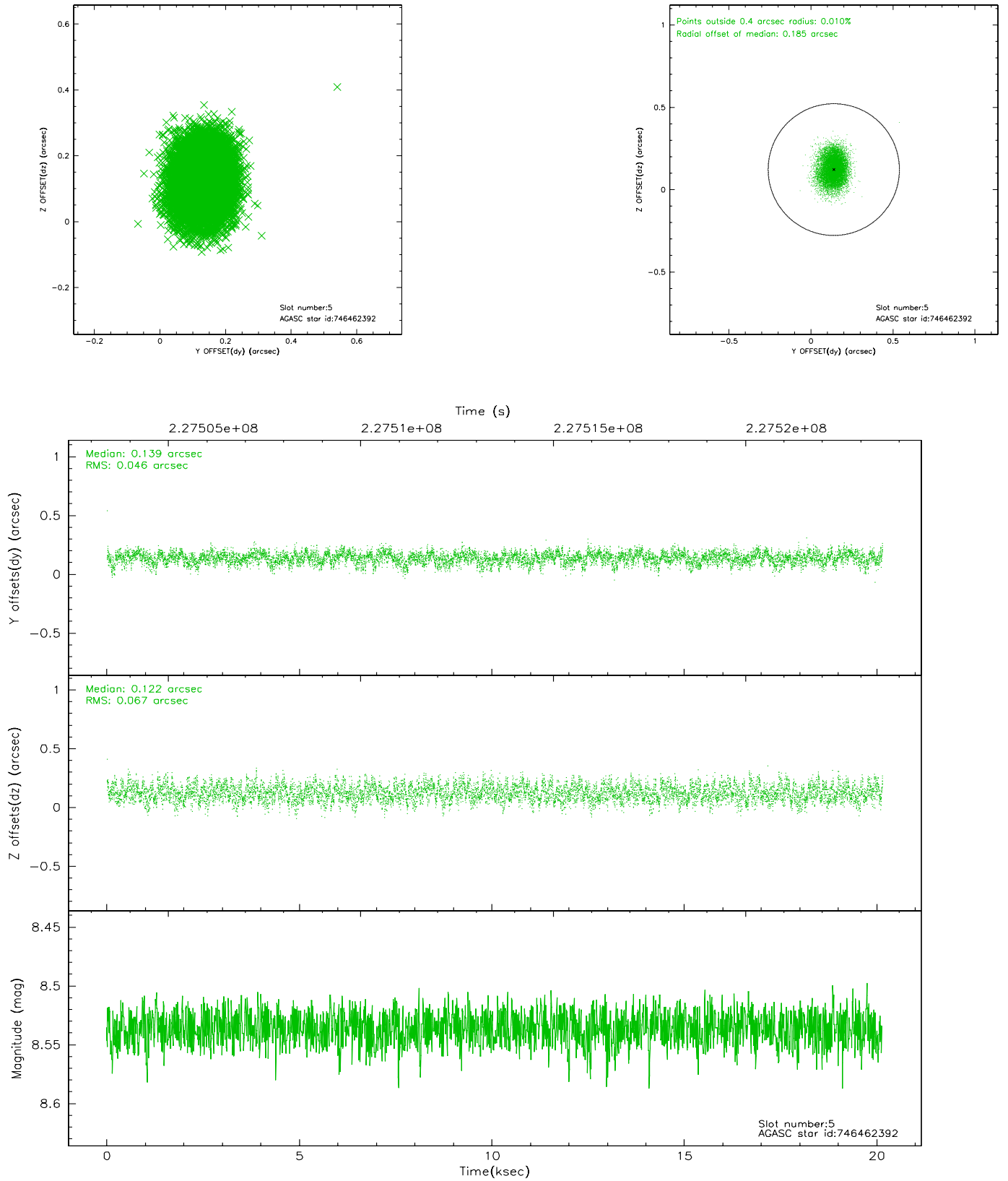
2.4.1 Slot 3



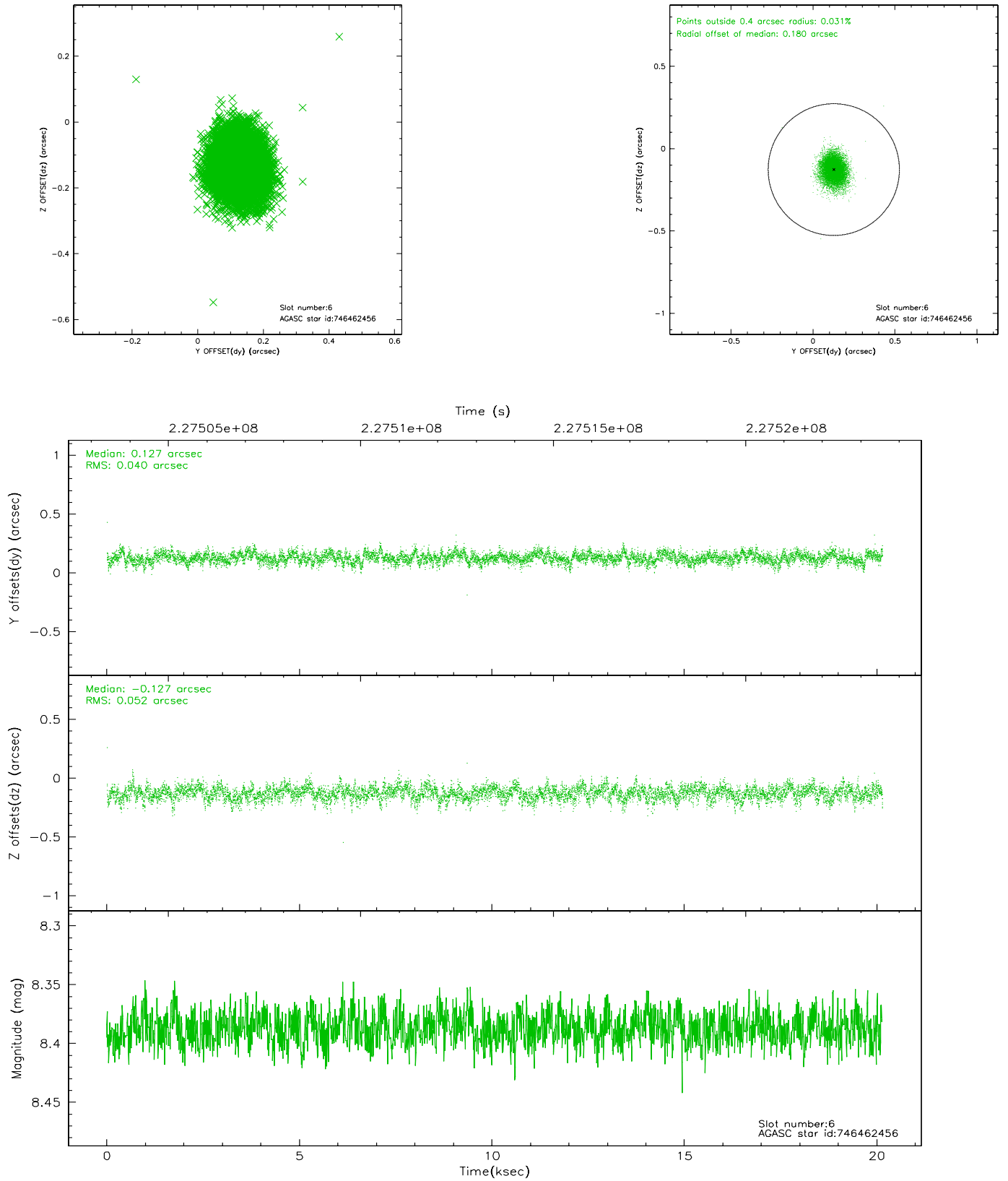
2.4.2 Slot 4



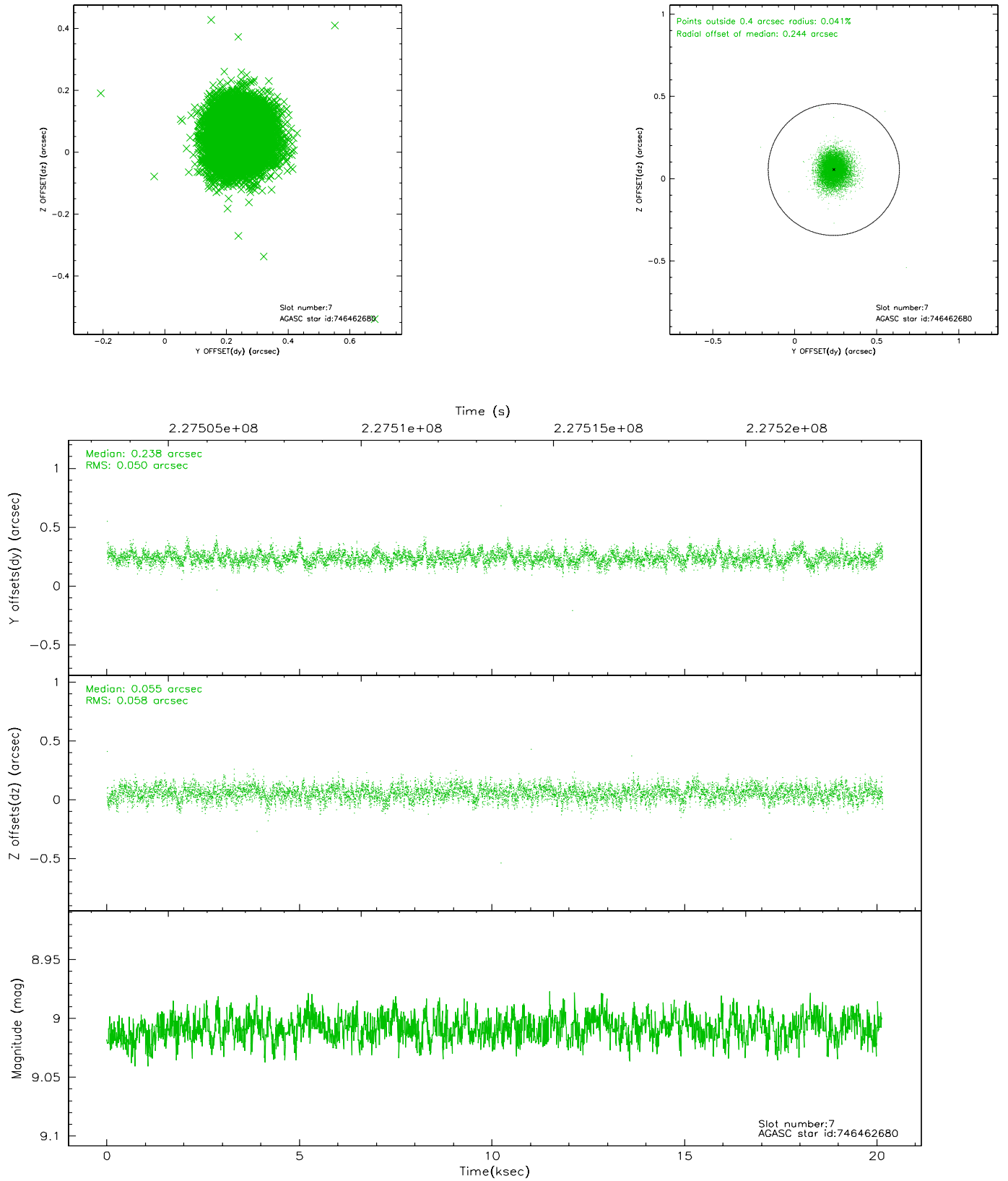
2.4.3 Slot 5



2.4.4 Slot 6

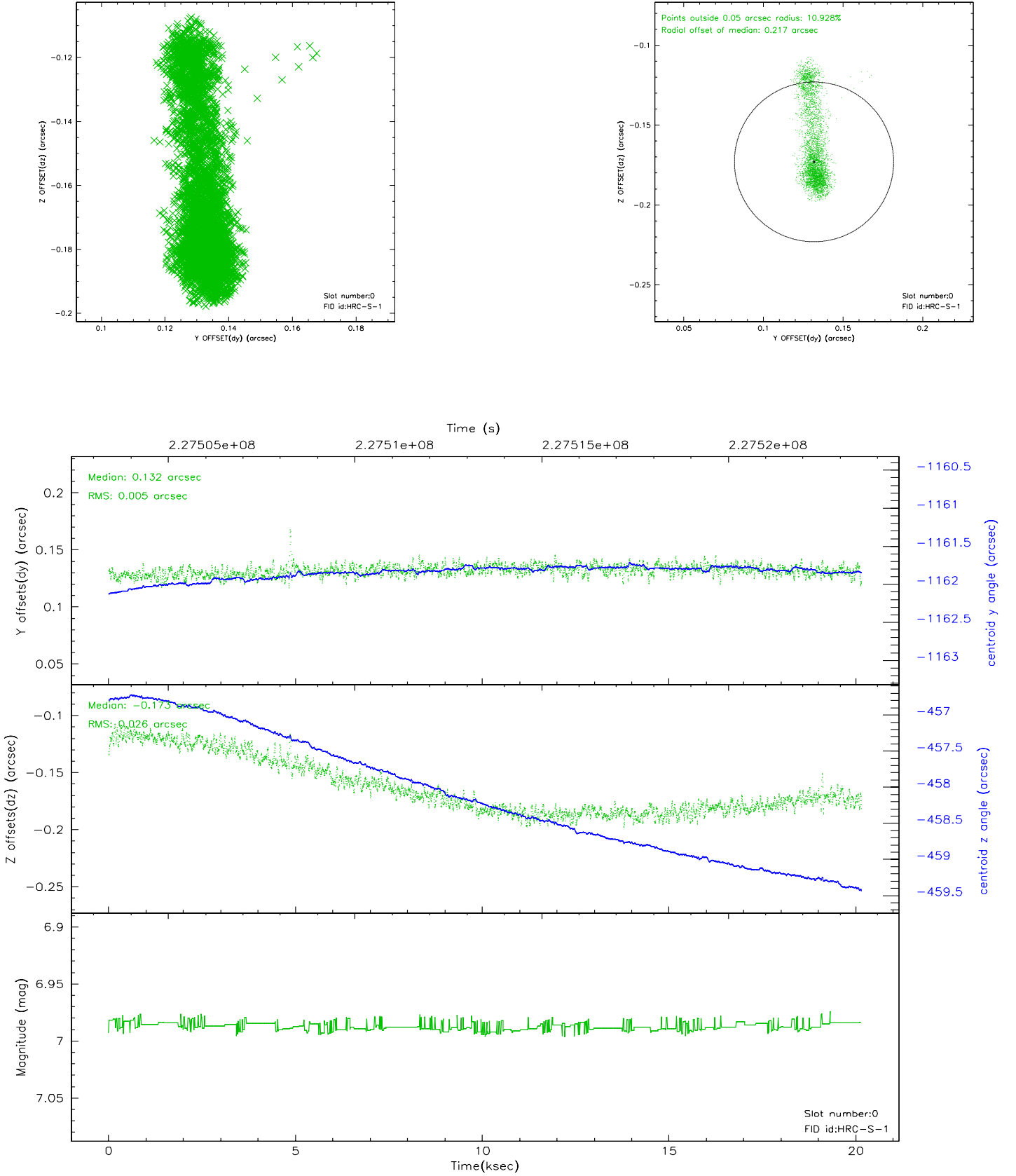


2.4.5 Slot 7

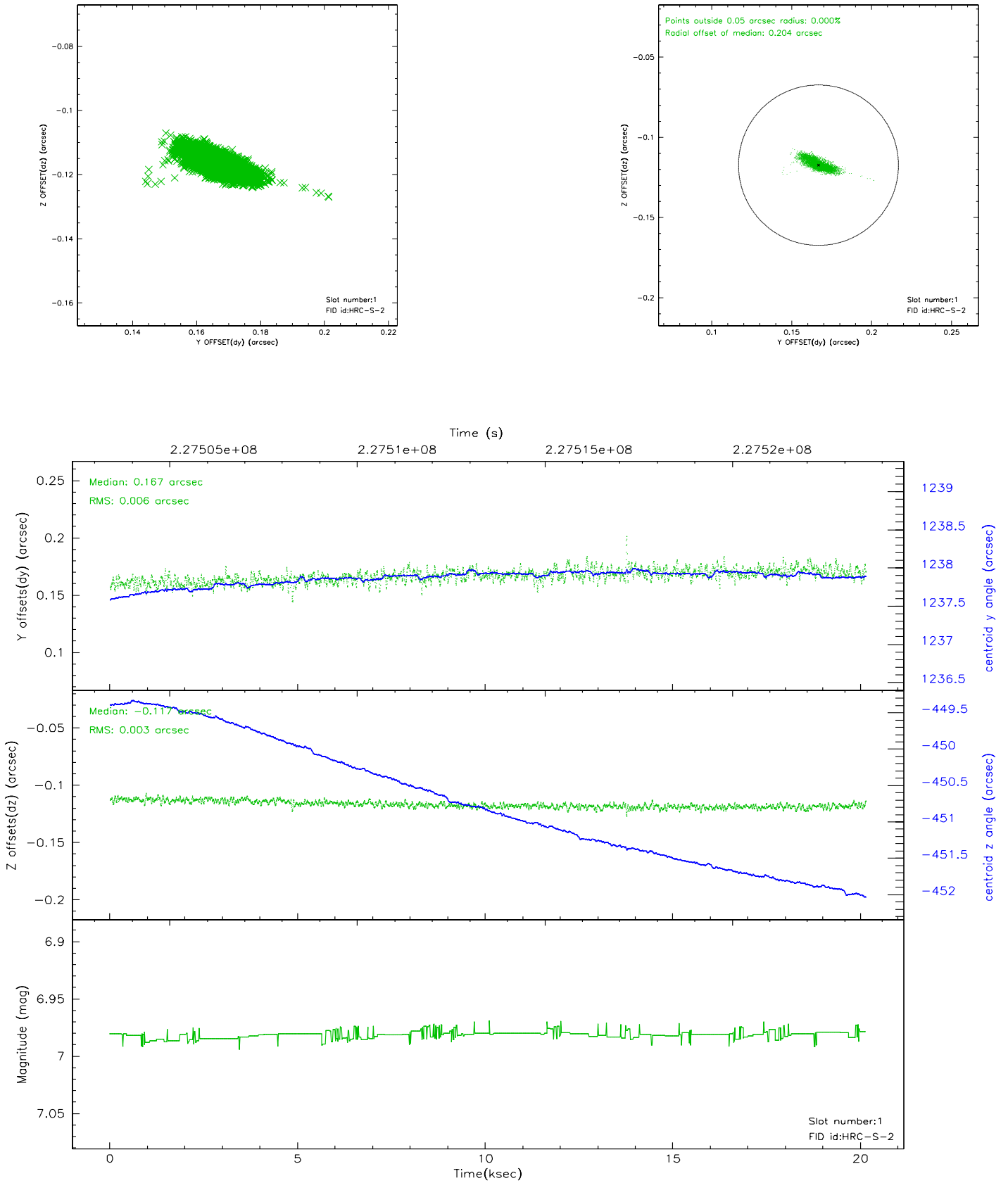


2.5 FID Slots

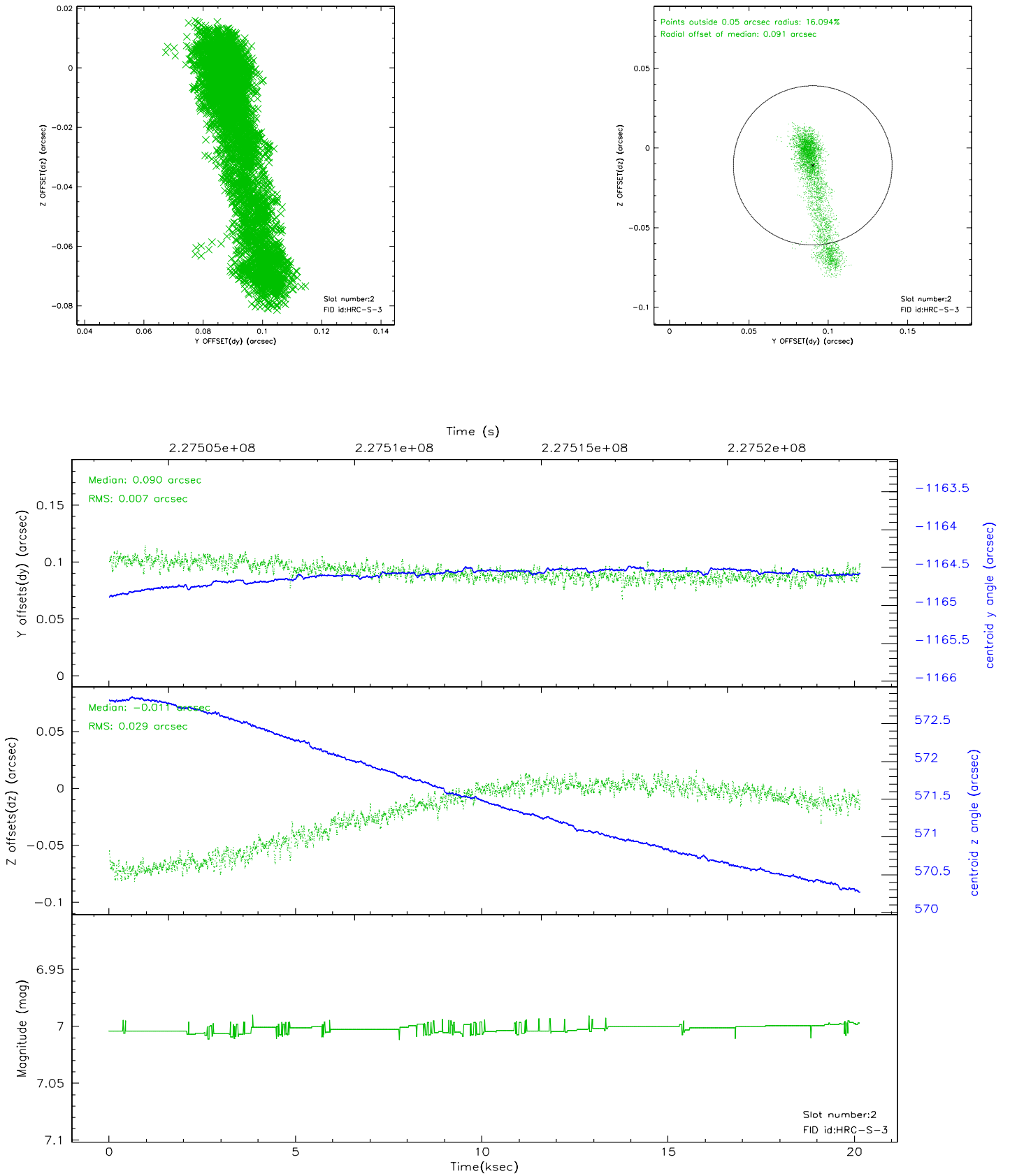
2.5.1 Slot 0



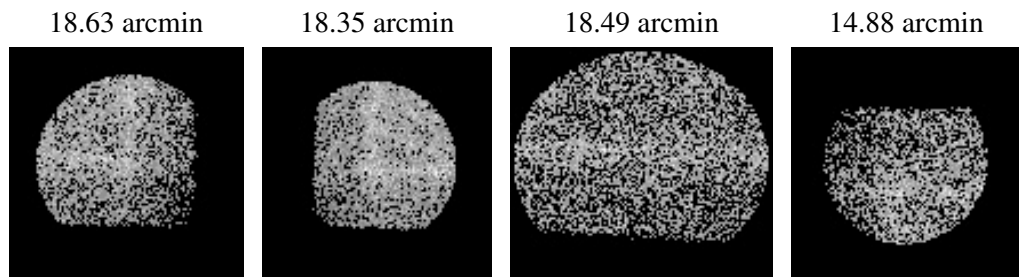
2.5.2 Slot 1



2.5.3 Slot 2



3 Point Sources



A Summary

A.1 Status

V&V Scientist	Beth Sundheim
V&V Date (YYYY-MM-DD)	2006.02.27
V&V Edition	1
V&V Disposition and Status	OK
V&V Charge Time	20.14663

A.2 Comments

Window constraint satisfied.