

# V&V Reference Report

## L2 ASCDS Version : 8.5

Observation 6052 - L2 Version 3  
Chandra X-Ray Center

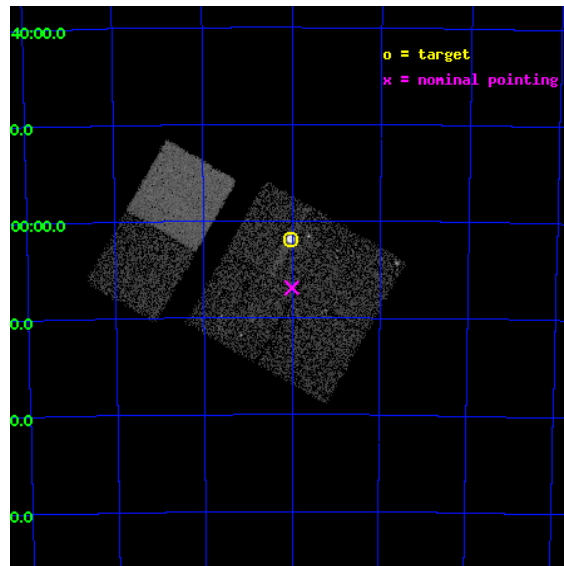
L2 Processing Date : Dec 12 2012

## Contents

<b>1</b>	<b>Front</b>	<b>2</b>
<b>2</b>	<b>OBI</b>	<b>3</b>
2.1	OBI . . . . .	3
2.1.1	Images . . . . .	3
2.1.2	Bias . . . . .	3
2.1.3	Parameters . . . . .	4
2.1.4	Events . . . . .	4
2.2	Compared Parameters . . . . .	5
2.3	Aspect . . . . .	6
2.4	Star Slots . . . . .	9
2.4.1	Slot 3 . . . . .	9
2.4.2	Slot 4 . . . . .	10
2.4.3	Slot 5 . . . . .	11
2.4.4	Slot 6 . . . . .	12
2.4.5	Slot 7 . . . . .	13
2.5	FID Slots . . . . .	14
2.5.1	Slot 0 . . . . .	14
2.5.2	Slot 1 . . . . .	15
2.5.3	Slot 2 . . . . .	16
<b>A</b>	<b>Summary</b>	<b>17</b>
A.1	Status . . . . .	17
A.2	Comments . . . . .	17

# 1 Front

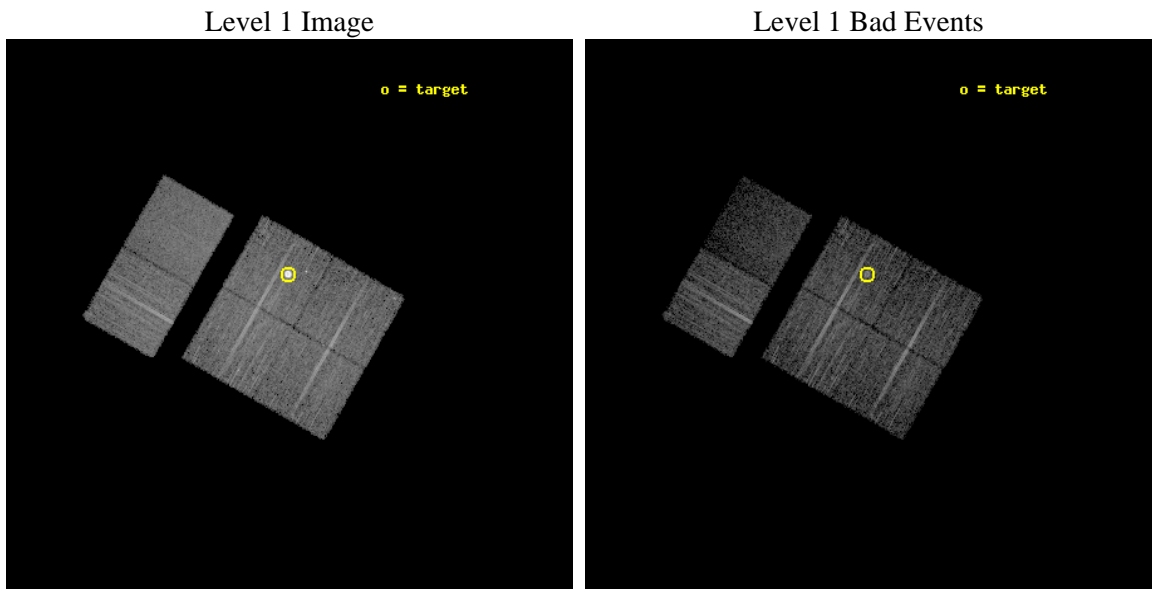
seq_num	590379	Sequence number
obs_id	6052	Observation id
title	AO6A ACIS-I Calibration Observations of E0102-72	Proposal title
observer	Dr. CXC Calibration	Principal investigator
object	E0102-72[I3,-120,-4.0,2.5,0]	Source name
dtcycle	0	&#160
cycle	P	events from which exps? Prim/Second/Both
ra_targ	16.01	Observer's specified target RA [deg]
dec_targ	-72.032028	Observer's specified target Dec [deg]
ra_nom	16.000958999281	Nominal RA [deg]
dec_nom	-72.115125585593	Nominal Dec [deg]
roll_nom	299.8198613824	Nominal Roll [deg]
revision	3	Processing version of data
ontime	7641.5999715328	Sum of GTIs [s]
livetime	7544.8374314742	Livetime [s]
ontime0	7641.5999715328	Sum of GTIs [s]
ontime1	7641.5999715328	Sum of GTIs [s]
ontime2	7638.3589713573	Sum of GTIs [s]
ontime3	7641.5999715328	Sum of GTIs [s]
ontime6	7641.5999715328	Sum of GTIs [s]
ontime7	7641.5999715328	Sum of GTIs [s]
l2events	61995	Number of level 2 events



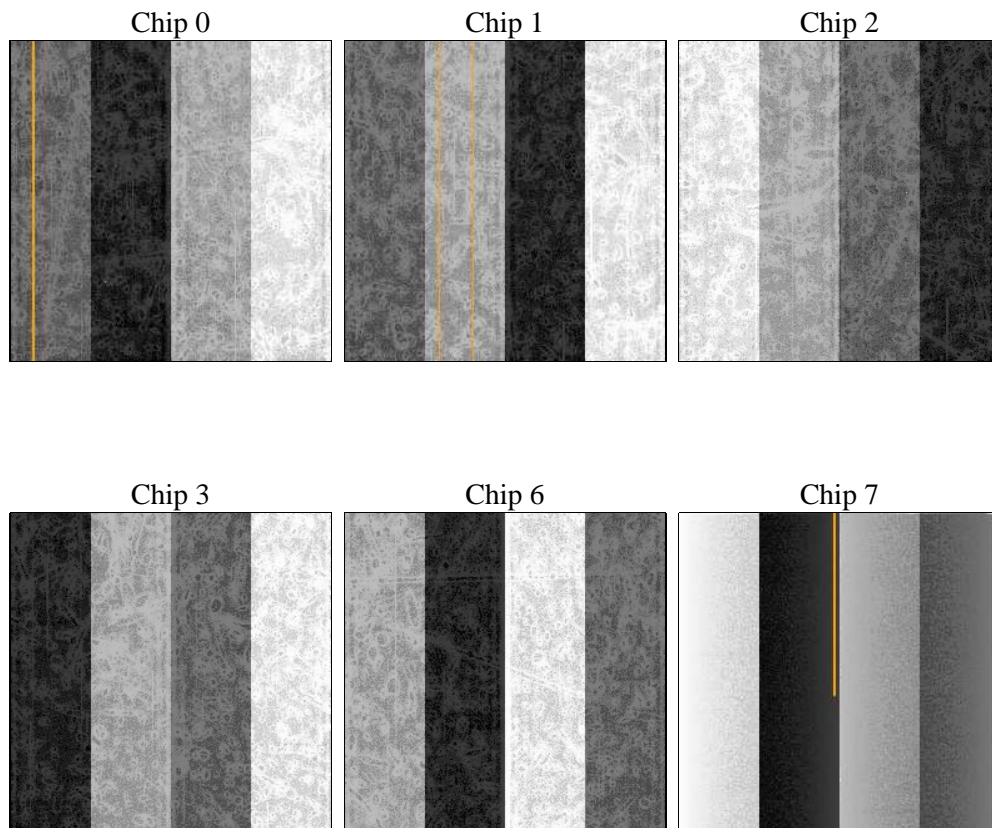
## 2 OBI

### 2.1 OBI

#### 2.1.1 Images



#### 2.1.2 Bias



### 2.1.3 Parameters

obi_num	0	Obi number	sched_exp_time	7500.000000	[s] Scheduled observation exposure time
ascdsver	8.5	Processing system revision	ontime	7641.5999715328	Sum of GTIs [s]
caldsver	4.5.4	&#160	ontime0	7641.5999715328	Sum of GTIs [s]
date	2012-12-12T14:20:28	Date and time of file creation	ontime1	7641.5999715328	Sum of GTIs [s]
revision	3	Processing version of data	ontime2	7638.3589713573	Sum of GTIs [s]
			ontime3	7641.5999715328	Sum of GTIs [s]
			ontime6	7641.5999715328	Sum of GTIs [s]
			ontime7	7641.5999715328	Sum of GTIs [s]
			l1events	355045	Number of level 1 events

### 2.1.4 Events

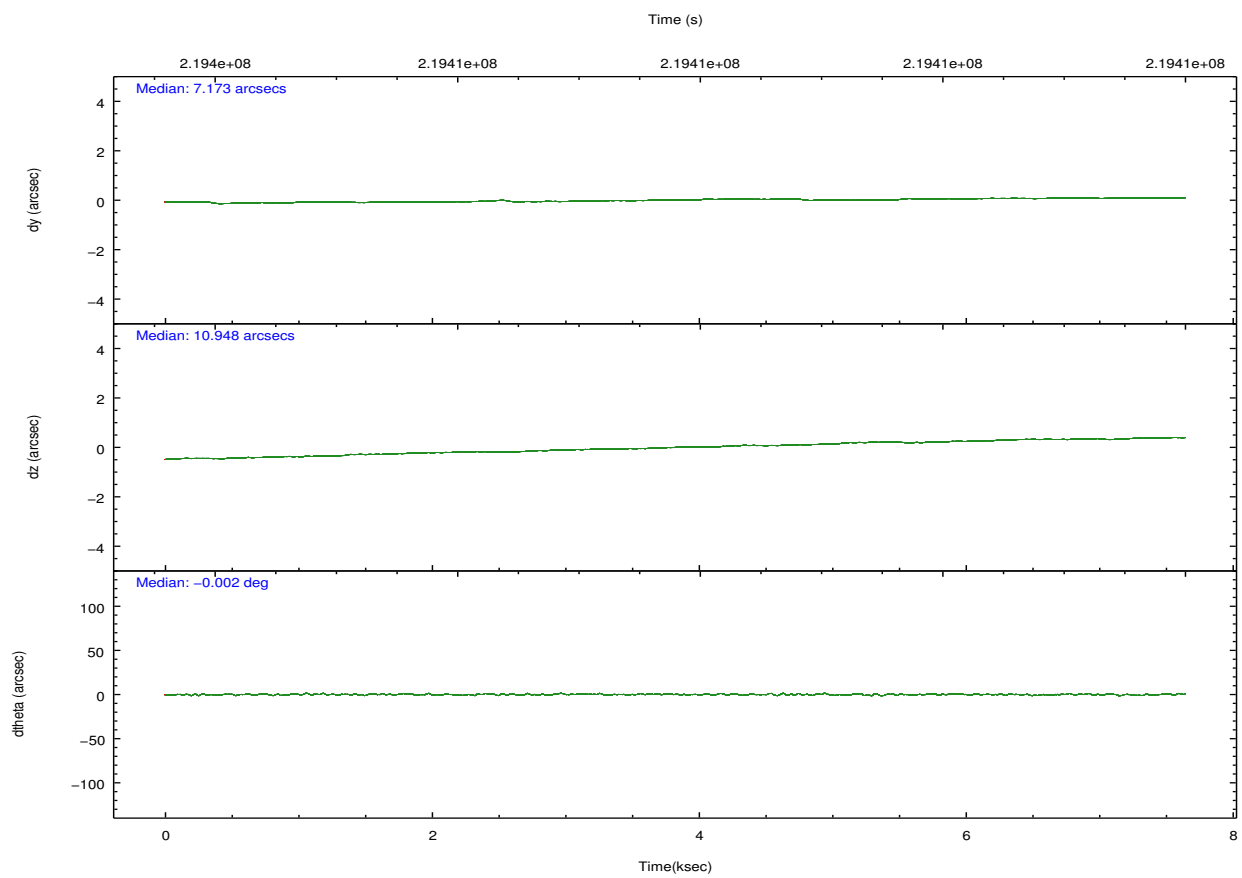
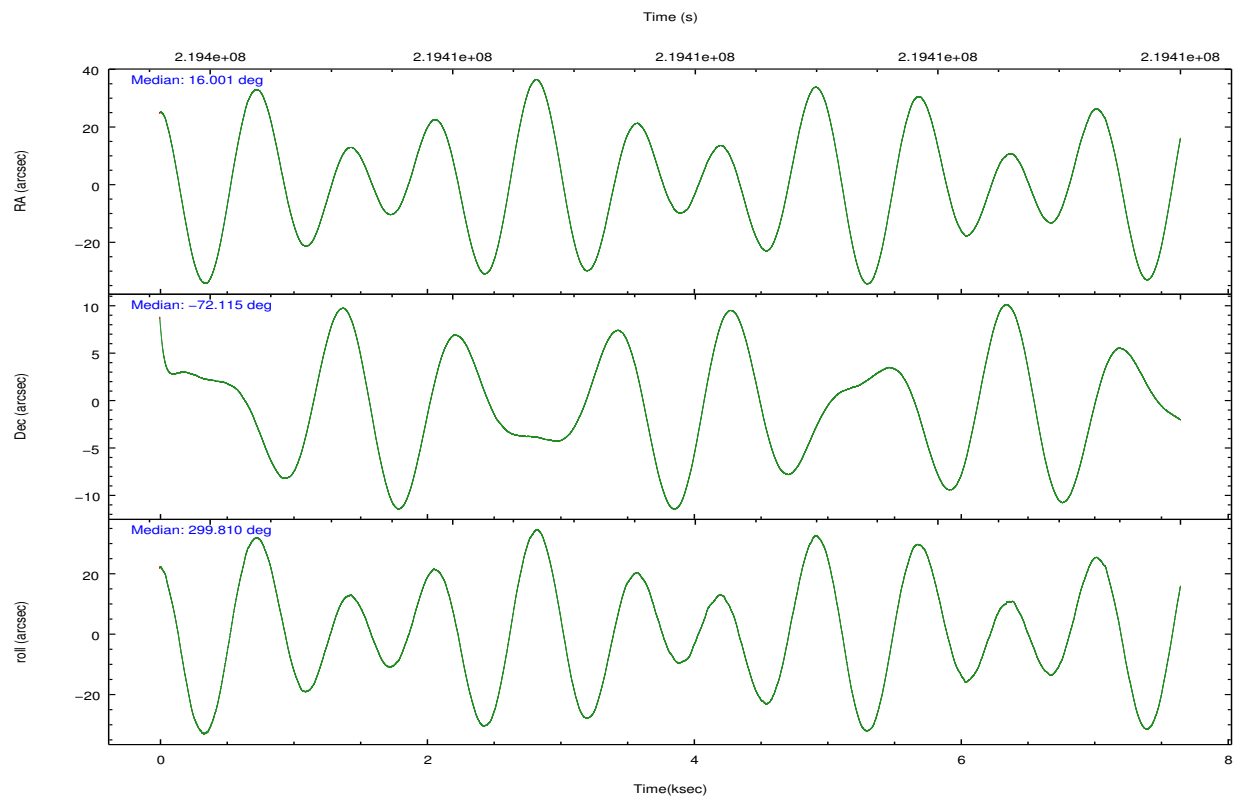
	ccd 0	ccd 1	ccd 2	ccd 3	ccd 6	ccd 7		ccd 0	ccd 1	ccd 2	ccd 3	ccd 6	ccd 7
level 1 events	51582	50653	61414	79408	59232	52756	grade 0 events	2305	2368	2729	23518	2027	2601
rejected events	46968	45649	56474	51387	54660	31850		4%	4%	4%	29%	3%	4%
rejected %	91%	90%	91%	64%	92%	60%	grade 1 events	29	23	29	248	26	59
								0%	0%	0%	0%	0%	0%
							grade 2 events	1290	1247	1273	2847	1232	5468
								2%	2%	2%	3%	2%	10%
							grade 3 events	603	710	590	1003	628	2552
								1%	1%	0%	1%	1%	4%
							grade 4 events	602	687	653	1024	591	2486
								1%	1%	1%	1%	0%	4%
							grade 5 events	1573	1786	1540	1988	1859	5778
								3%	3%	2%	2%	3%	10%
							grade 6 events	958	1112	872	1159	1177	13011
								1%	2%	1%	1%	1%	24%
							grade 7 events	44222	42720	53728	47621	51692	20801
								85%	84%	87%	59%	87%	39%



## 2.2 Compared Parameters

Parameter	Planned	Actual	Parameter	Planned	Actual
Instrument	ACIS	ACIS	Obspar format version number	7	7
Detector	ACIS-012367	ACIS-012367	Obspar file type	PREDICTED	ACTUAL
Grating	NONE	NONE	Obspar update status	NONE	UPDATED
Data mode	VFAINT	VFAINT	Number of optional ACIS chips dropped	0	0
Observation mode	POINTING	POINTING	On-chip summing requested	N	N
[deg] Pointing RA	15.923953	16.0009589992809	Subarray requested	NONE	NONE
[deg] Pointing Dec	-72.101472	-72.11512558559258	Alternating exposures requested	N	N
[deg] Pointing Roll	299.537900	299.8198613824042	[s] Primary exposure time	0.000000	3.2
[s] Window start time (MET)	215654464.184000	215654464.184000			
[s] Window stop time (MET)	220838464.184000	220838464.184000			
[mm] SIM focus pos	-0.782348	-0.7809083437167272			
[mm] SIM defocus	0	0.001439871863259334			
[mm] SIM translation stage pos	-233.592463	-233.5874344608287			
[mm] SIM translation stage offset	0	-0.005018542100998502			
[s] Observation start time (MET)	219404110.184000	219402034.40591			
Observation start date	2004-12-14T09:34:06	2004-12-14T09:00:34			
[s] Observation end time (MET)	219411610.184000	219412375.63138			
Observation end date	2004-12-14T11:39:06	2004-12-14T11:52:55			
Read mode	TIMED	TIMED			

## 2.3 Aspect

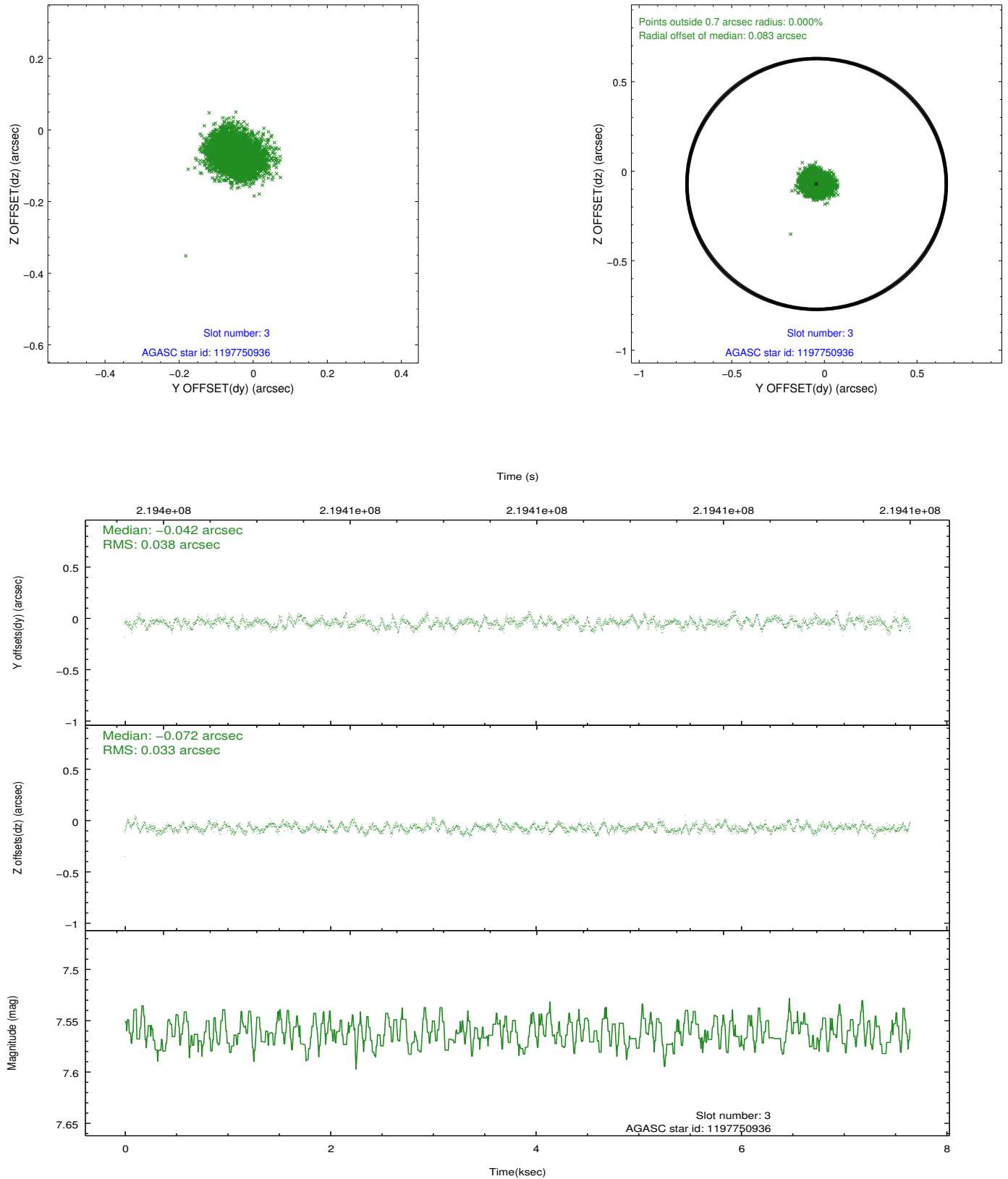


### Slot Statistics

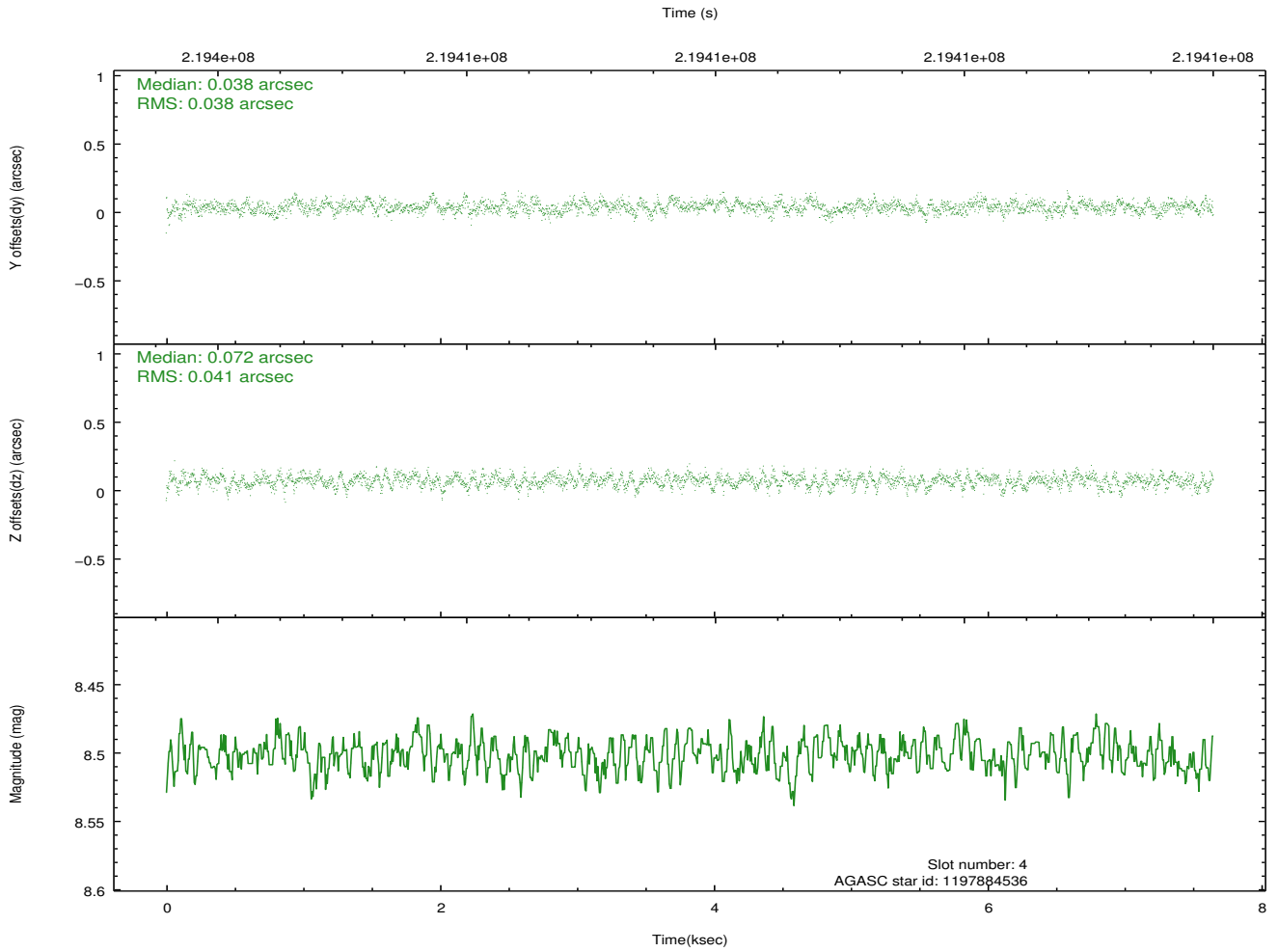
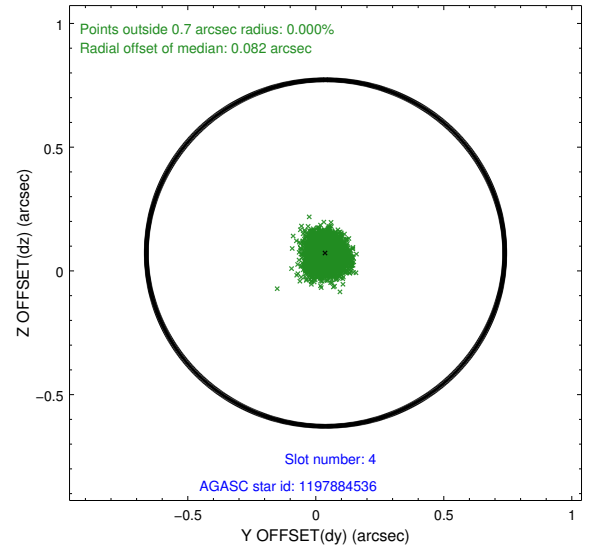
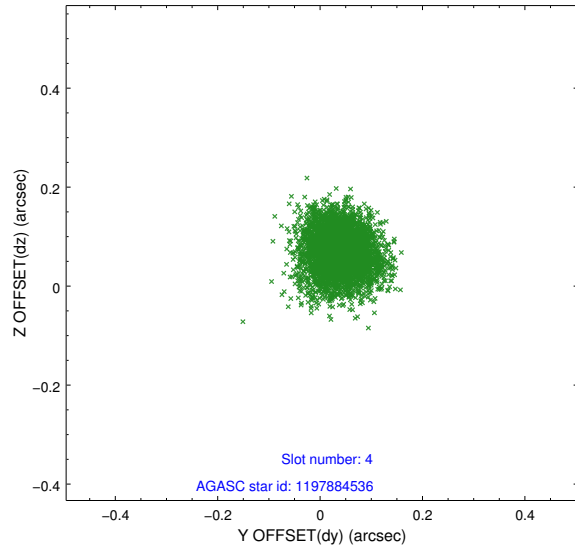
slot	status	id	mag	n_pts	med_dy	med_dz	dr1	dr2	ra	dec	mean_y	mean_z
0	FID	ACIS-I-2	7.14	1866	-0.075	-0.098	0.012	0.018	0.000000	0.000000	-761.74	-840.89
1	FID	ACIS-I-4	7.18	1866	0.150	0.074	0.008	0.014	0.000000	0.000000	2152.21	1065.08
2	FID	ACIS-I-5	7.22	1866	-0.176	0.094	0.009	0.015	0.000000	0.000000	-1814.71	1063.80
3	GUIDE	1197750936	7.56	3732	-0.042	-0.072	0.055	0.085	15.387940	-71.549550	-2026.81	446.76
4	GUIDE	1197884536	8.50	3731	0.038	0.072	0.060	0.097	17.160729	-71.835289	-137.35	1673.43
5	GUIDE	1197884712	8.30	3732	0.102	0.071	0.054	0.084	16.087398	-72.252690	562.88	-111.53
6	GUIDE	1197885328	7.24	3732	-0.021	-0.036	0.055	0.088	16.283090	-71.733943	-949.81	1004.93
7	GUIDE	1198189696	7.36	3731	-0.076	-0.035	0.059	0.094	15.223750	-72.697522	1501.65	-1711.47

## 2.4 Star Slots

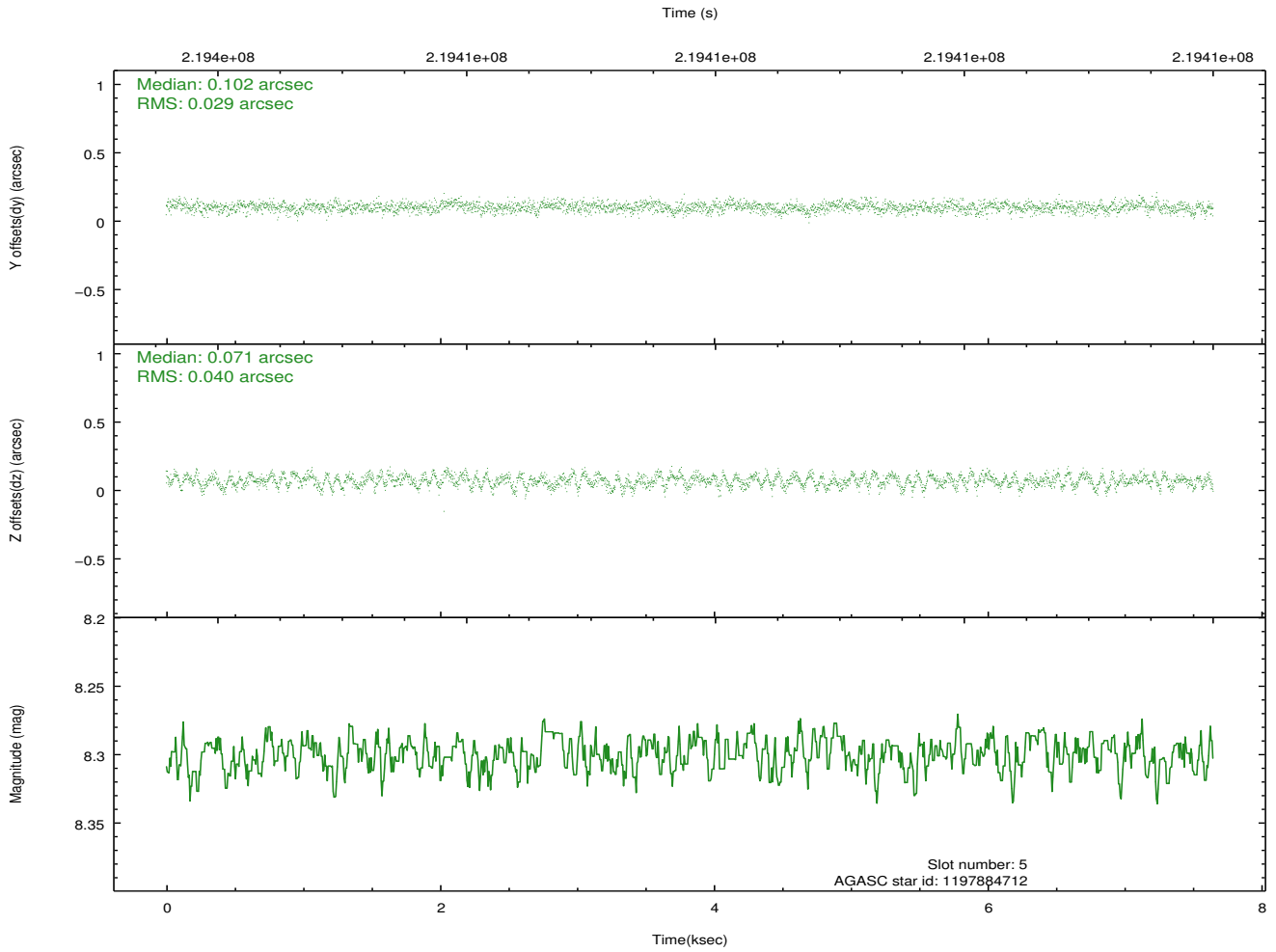
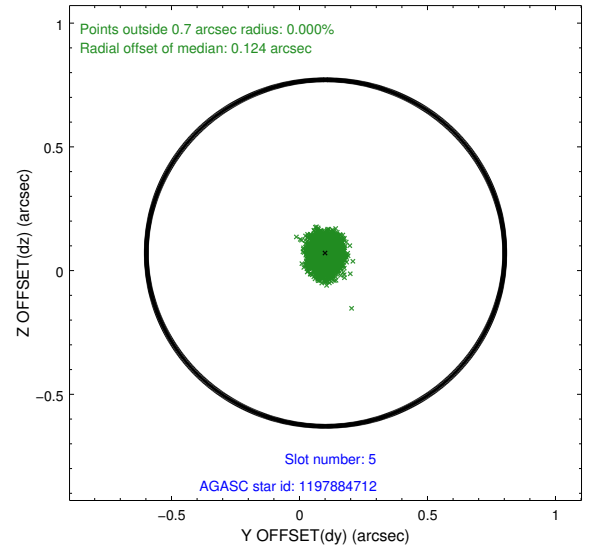
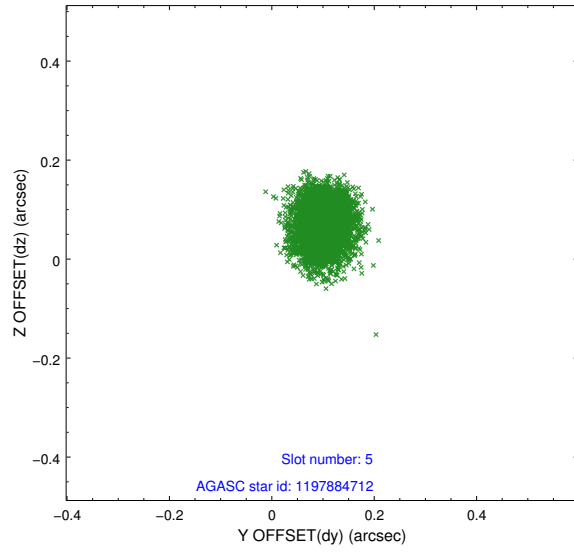
### 2.4.1 Slot 3



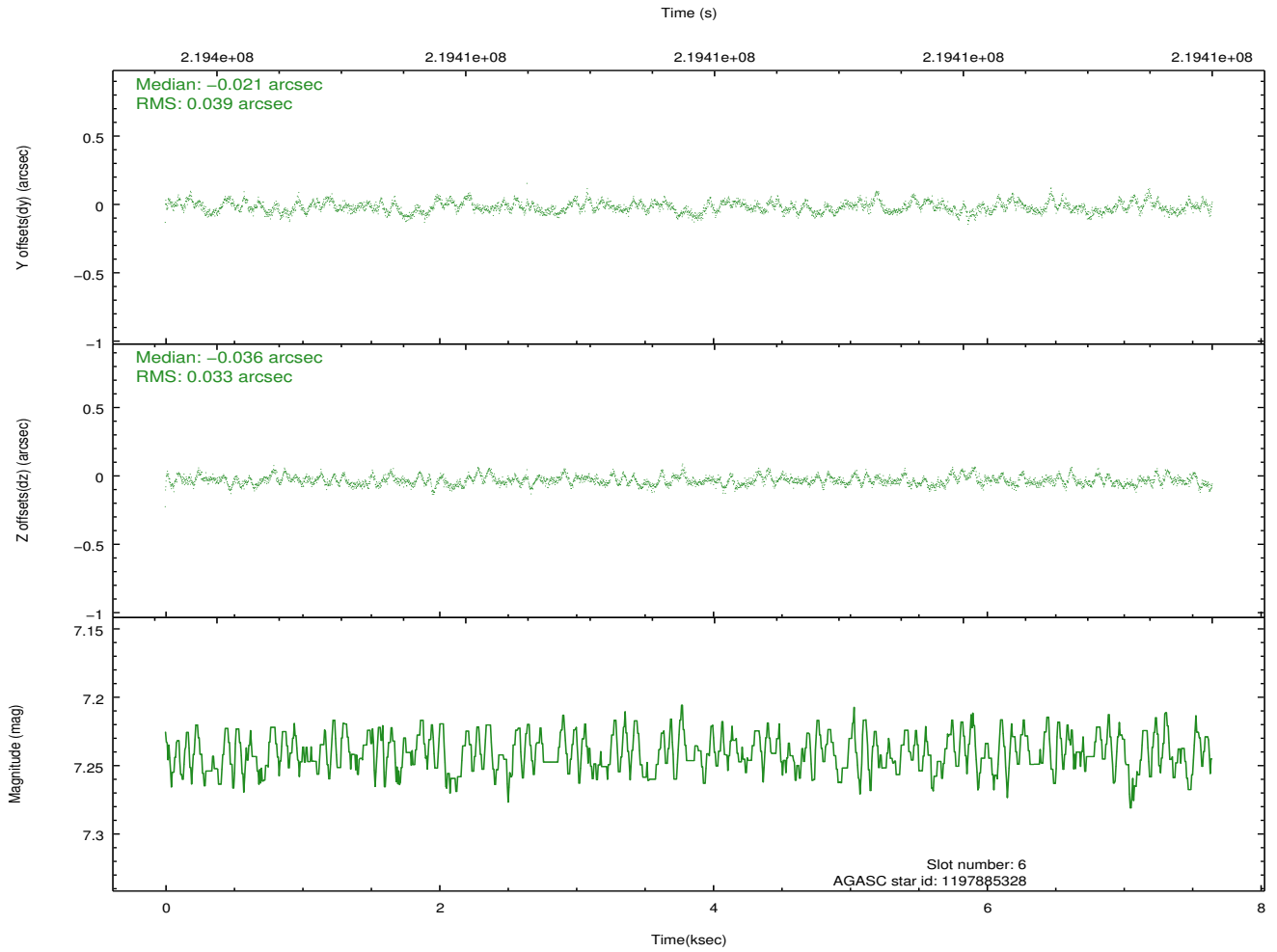
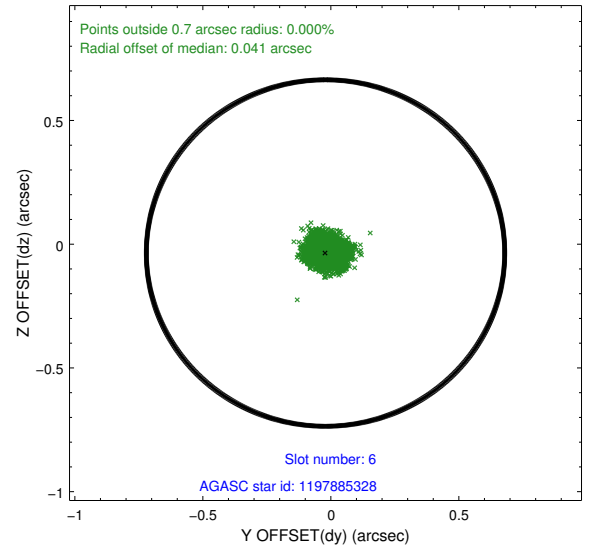
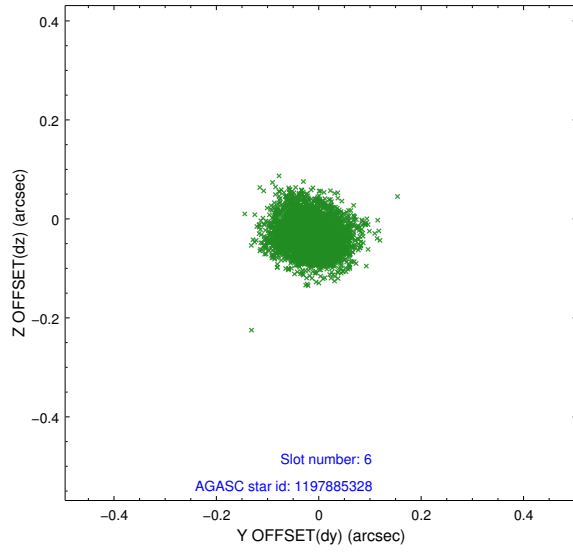
## 2.4.2 Slot 4



### 2.4.3 Slot 5

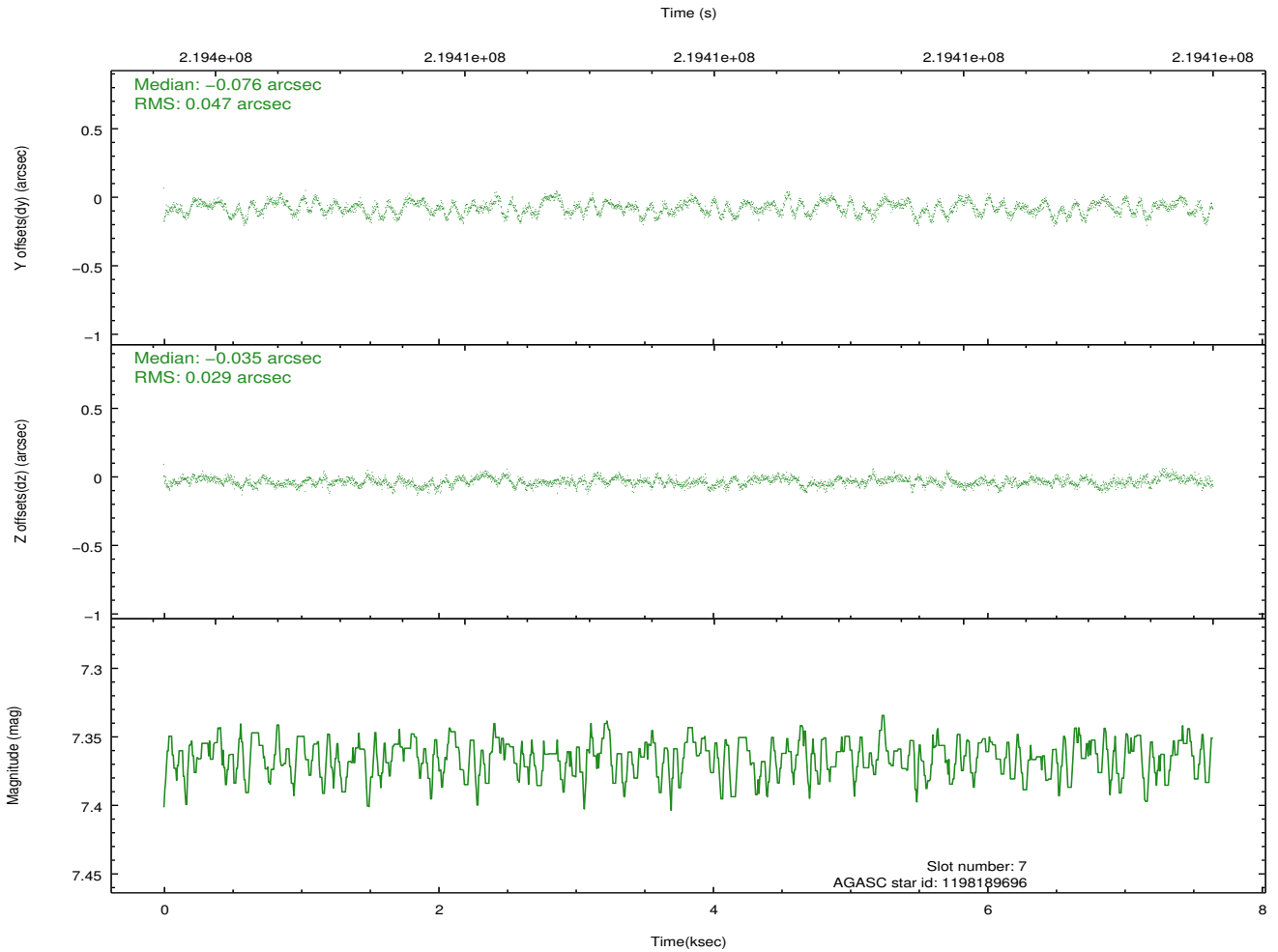
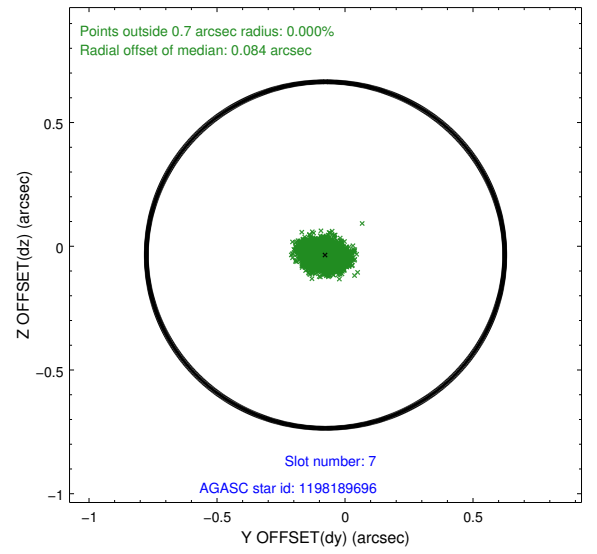
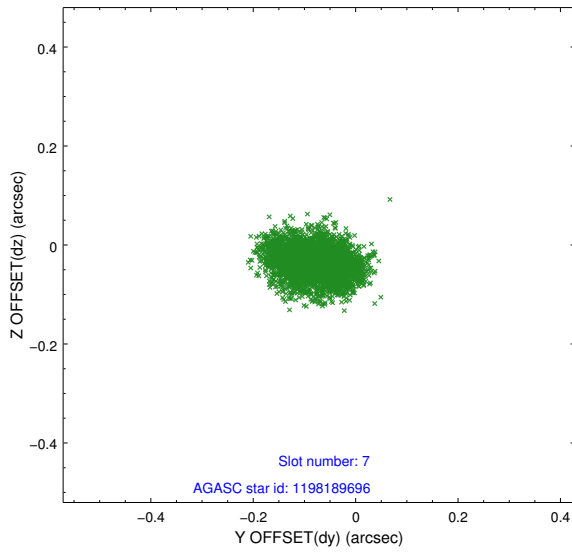


## 2.4.4 Slot 6



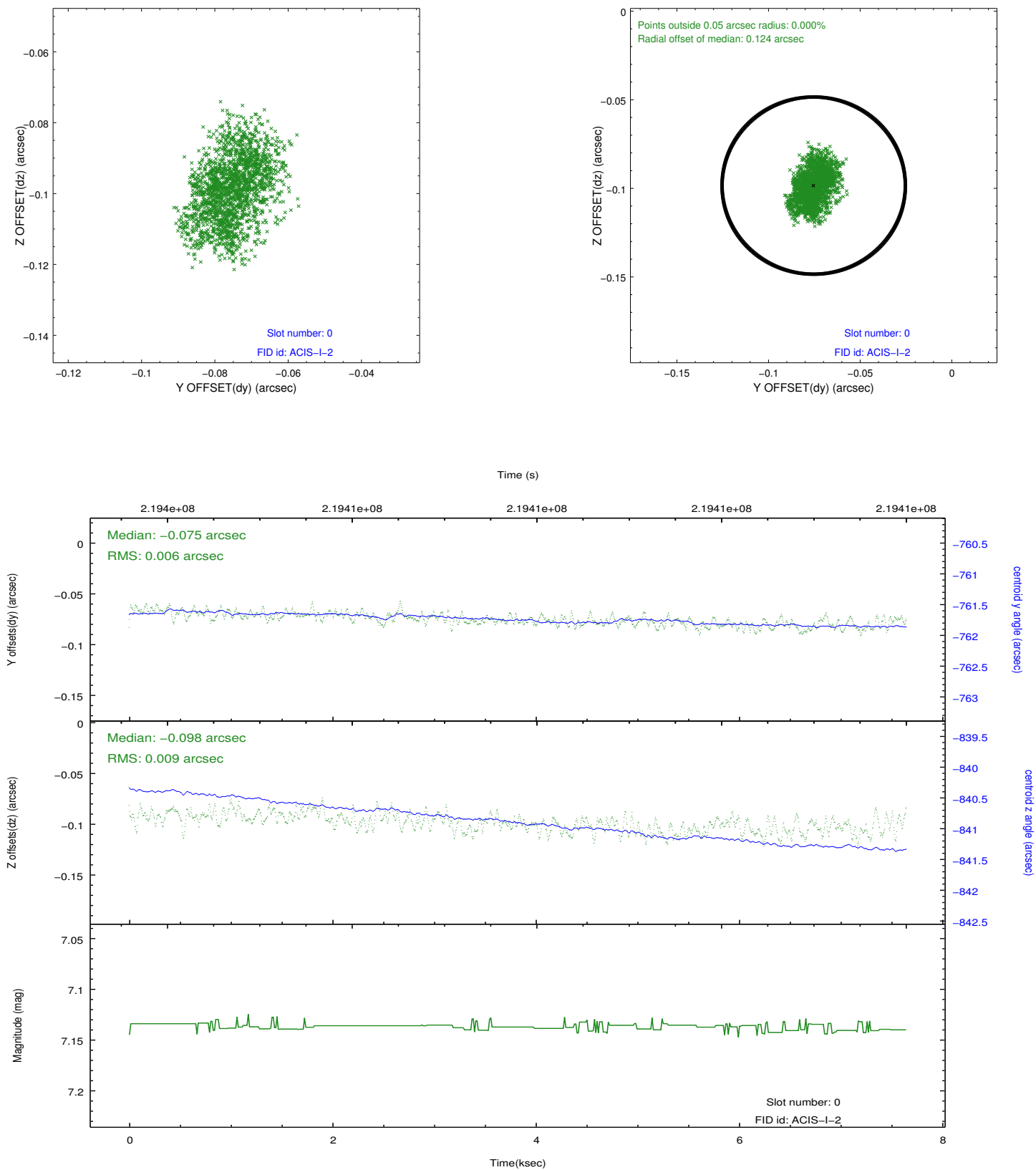


## 2.4.5 Slot 7

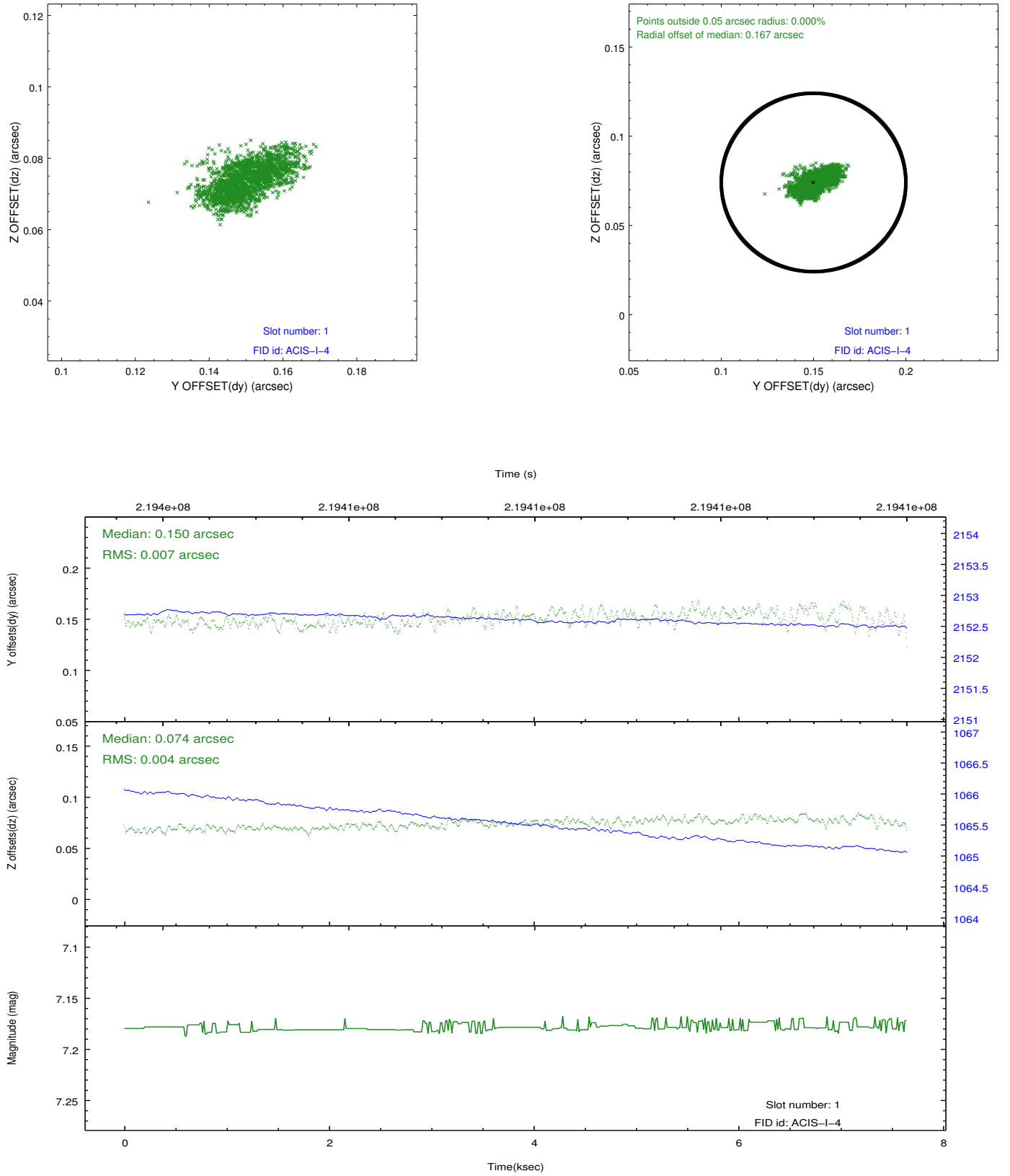


## 2.5 FID Slots

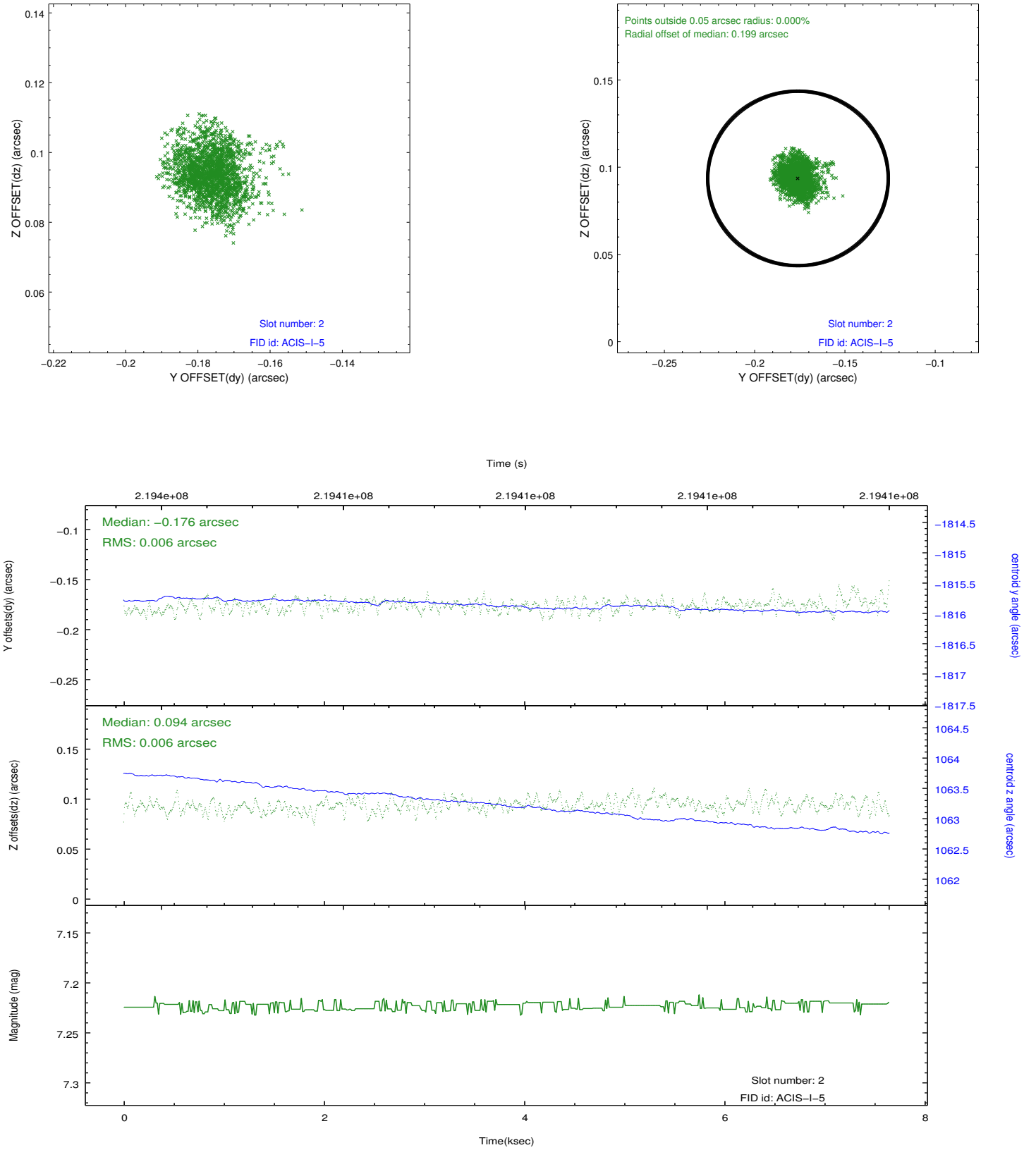
### 2.5.1 Slot 0



## 2.5.2 Slot 1



### 2.5.3 Slot 2



## A Summary

### A.1 Status

V&V Scientist	Jen Lauer
V&V Date (YYYY-MM-DD)	2013.01.04
V&V Edition	1
V&V Disposition and Status	OK
V&V Charge Time	7.641599

### A.2 Comments

Window constraint satisfied.